

# RURAL & WILDLIFE CRIME STRATEGY 2023-25





# OUR AIM

To reduce crime and build confidence in policing within rural communities

## **RURAL CRIME DEFINITION:**

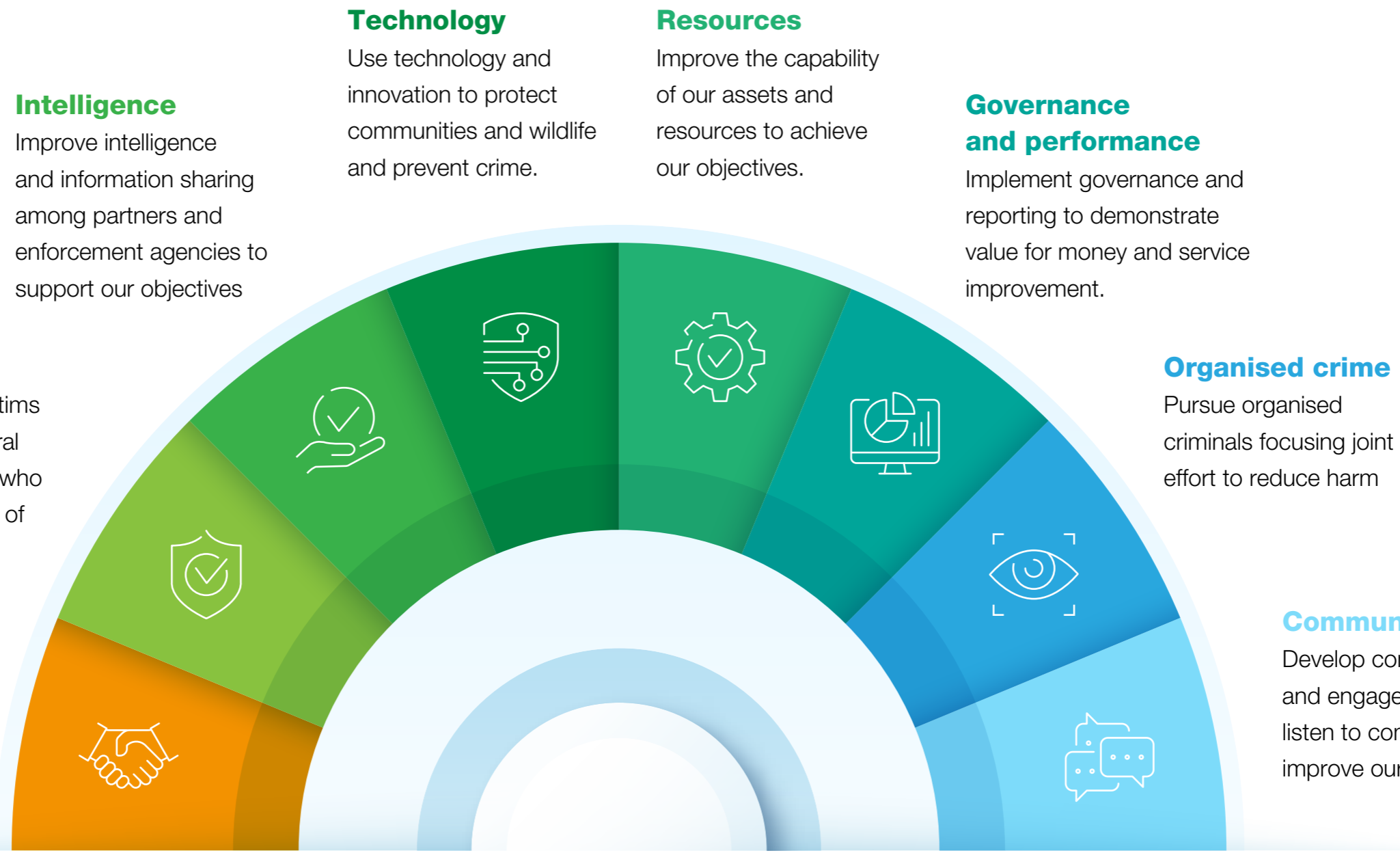
“Any crime that occurs in a rural location or affects people living, working or visiting Hampshire and the Isle of Wight”

## **WILDLIFE CRIME DEFINITION:**

“Any activity that goes against legislation protecting the UK's wild animals and plants”



# STRATEGIC OBJECTIVES



**Intelligence**  
Improve intelligence and information sharing among partners and enforcement agencies to support our objectives

**Technology**  
Use technology and innovation to protect communities and wildlife and prevent crime.

**Resources**  
Improve the capability of our assets and resources to achieve our objectives.

**Governance and performance**  
Implement governance and reporting to demonstrate value for money and service improvement.

**Organised crime**  
Pursue organised criminals focusing joint effort to reduce harm

**Victims**  
Improve support to victims affected by crime in rural areas especially those who have an increased fear of crime and vulnerability

**Partnerships**  
Work in partnership to protect rural communities and wildlife

**Communication**  
Develop communication and engagement plans to listen to communities and improve our service



# THE FOUR P'S

## PREPARE

Prepare for when rural and wildlife crime may occur, preventing where possible and mitigating its impact through efficient use of intelligence, data and technology.

## PREVENT

Preventing and deterring people from engaging in rural and wildlife crime through effective partnerships, media and communication, and public engagement.

## PURSUE

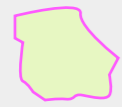
Relentless pursuit of offenders causing harm to rural communities with a focus on organised criminals, to prosecute, disrupt and deter offending.

## PROTECT

Protect rural communities and wildlife from the impact of crime through a coordinated effort utilising all available resources and stakeholders.



# RURAL BEATS



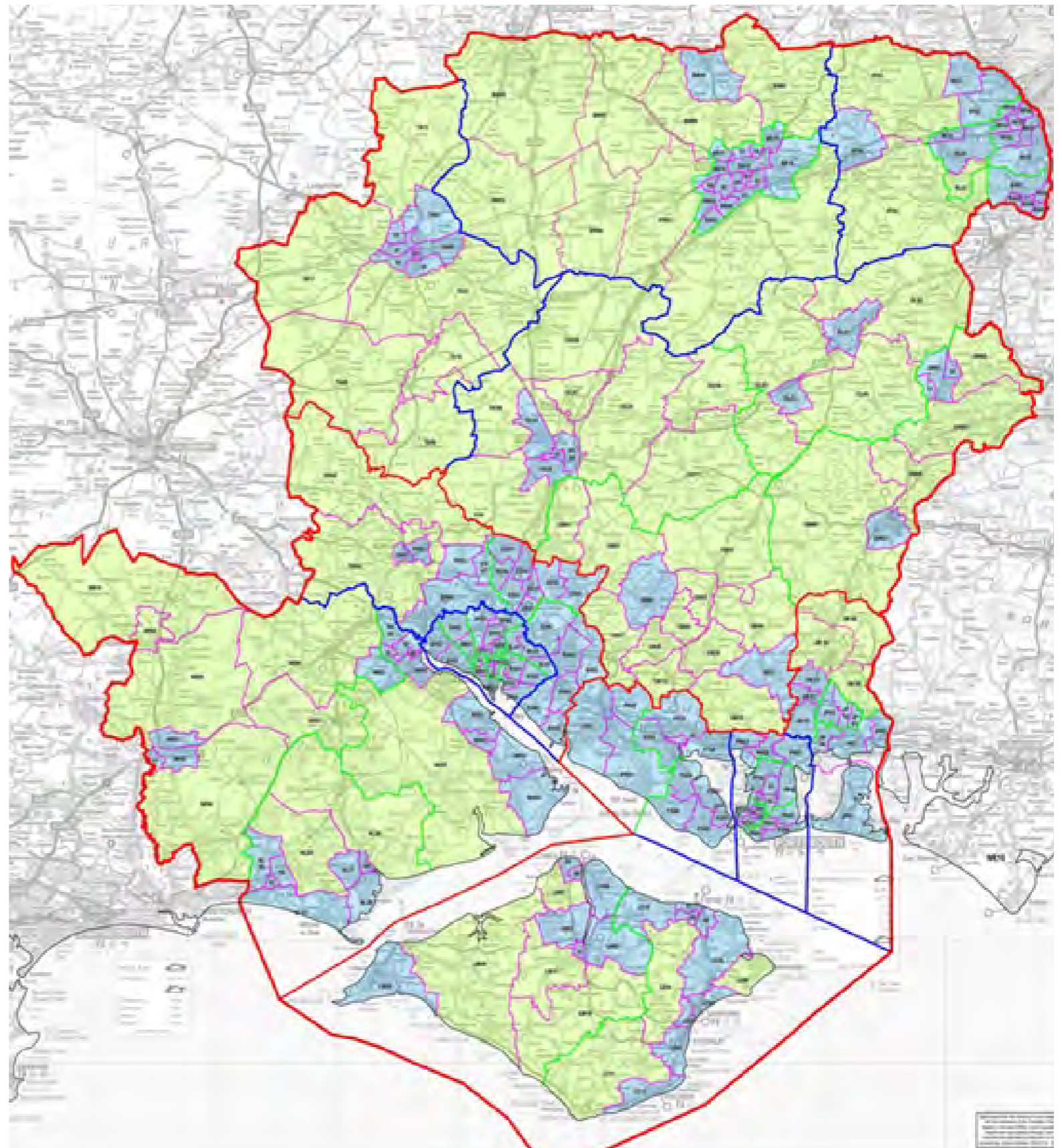
## RURAL DISTRICTS

- New Forest
- Test Valley
- Winchester
- East Hants
- Hart & Rushmoor
- Basingstoke
- Isle of Wight



## URBAN DISTRICTS

- Southampton
- Eastleigh
- Fareham
- Gosport
- Portsmouth
- Havant





# RURAL & WILDLIFE STRATEGY 2023-25

## Agricultural & rural business crime

- Plant/agricultural machinery theft
- Livestock offences
- Equine crime
- Cyber crime
- Metal and fuel theft



## Environmental & heritage crime

- Damage to/theft from land and marine heritage sites
- Protection of marine wildlife within coastal waters
- An illegal act which directly harms the environment
- Fly-tipping/waste through organised criminality



## Game sports & wildlife crime

- Illegal taking, disturbance of animals and birds
- Hare coursing
- Deer poaching/coursing
- Fish poaching



## Tackling criminal networks and organised crime in rural locations

- Involves more than one person
- Is organised, involves control and planning
- Causes or has potential to cause significant harm
- Involves financial gain



## Rural isolation

- Identification of under reporting due to rural isolation.
- Domestic Abuse
  - Sexual offences
  - Child Criminal Exploitation
  - Illegal immigration – human trafficking and modern day slavery, forced labour



## Rural community crime & road safety

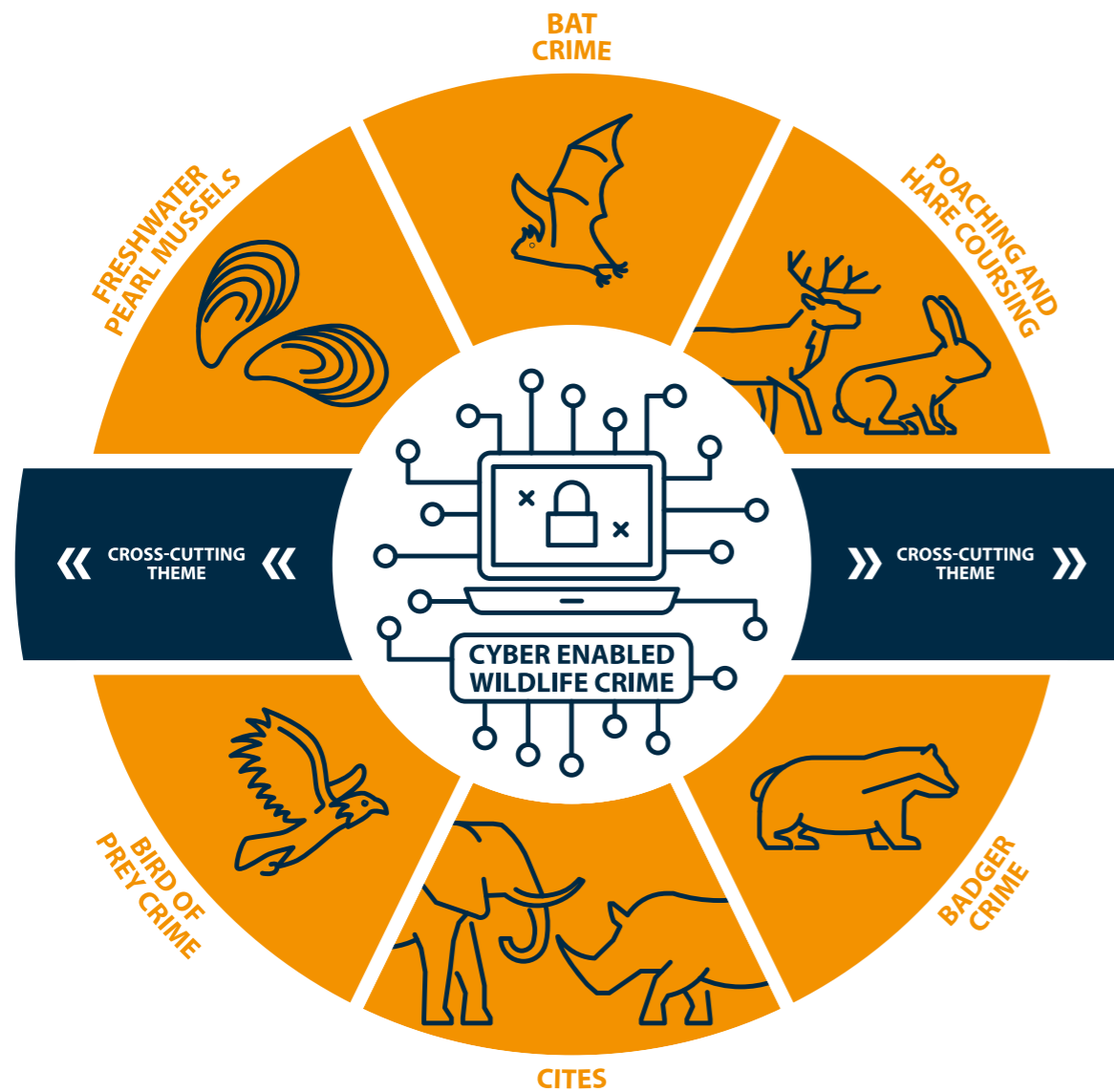
- Speeding within rural villages
- Crime and Anti-social behaviour committed along our coast, villages and rural “beauty spots”



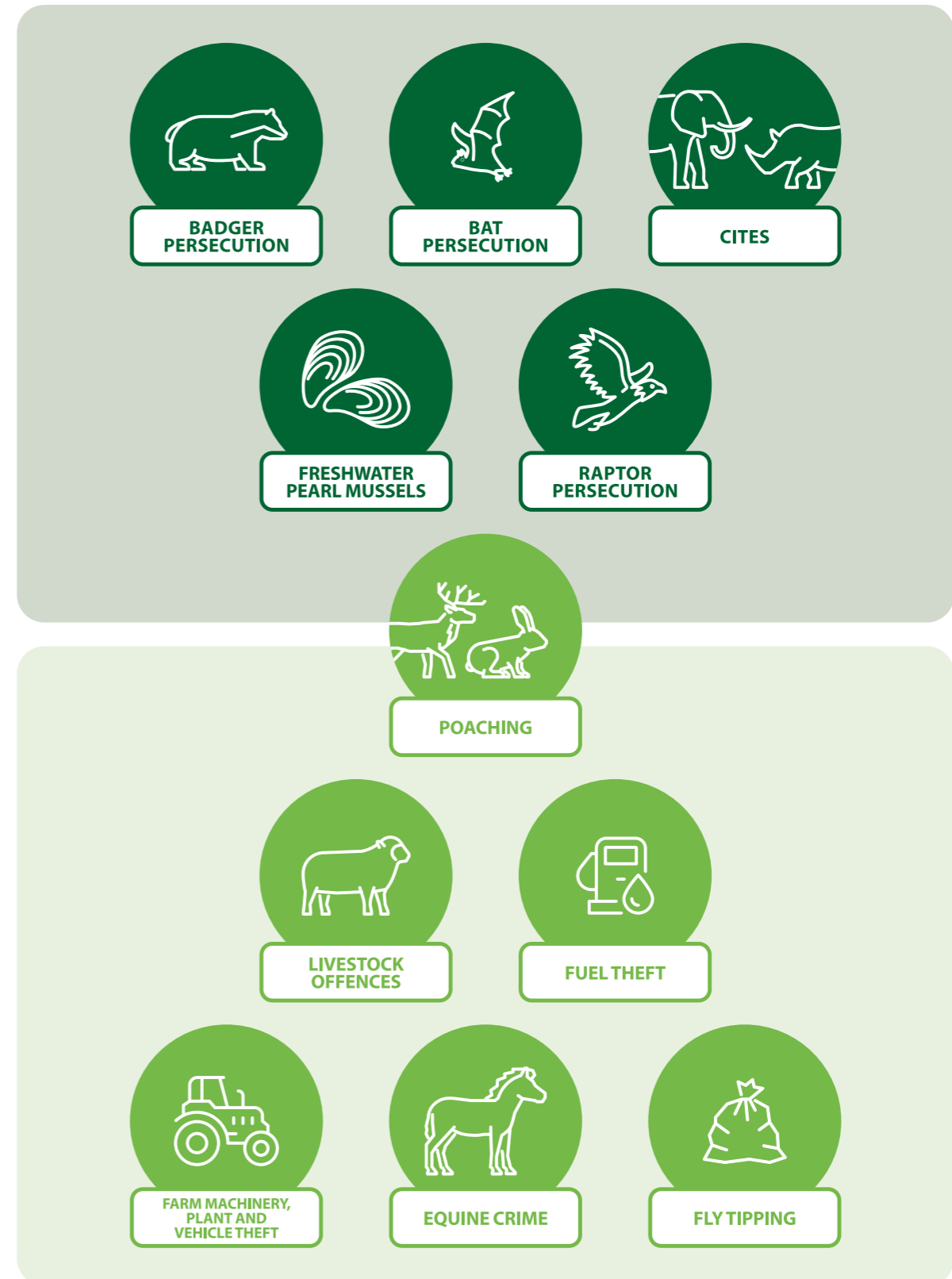


# NATIONAL

## UK National Wildlife Crime Priorities

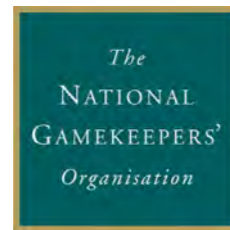


## Wildlife Crime & Rural Affairs Priority Delivery Groups





# OUR PARTNERS







Scan to report rural crime



Businesses scan to join our network

Members can report easily and receive alerts, news and updates



HAMPSHIRE & ISLE OF WIGHT  
**CONSTABULARY**

[www.hampshire.police.uk](http://www.hampshire.police.uk)



**COUNTRY  
WATCH**

[www.hampshirecountrywatch.co.uk](http://www.hampshirecountrywatch.co.uk)

DONNA JONES

**POLICE & CRIME  
COMMISSIONER**

HAMPSHIRE & ISLE OF WIGHT

[www.hampshire-pcc.gov.uk](http://www.hampshire-pcc.gov.uk)