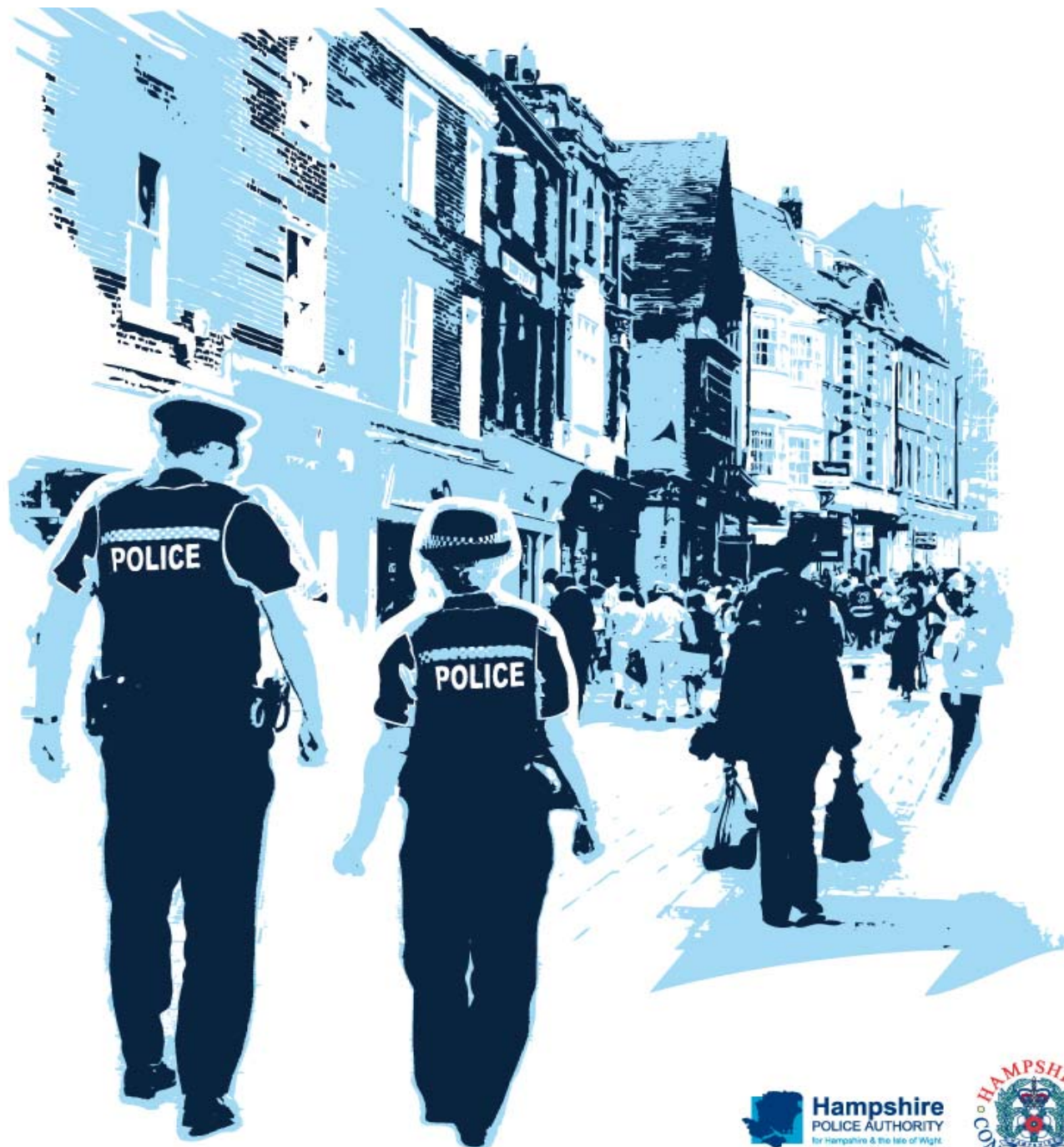


Performance Profile

June 2010



Summary and index

Summary

2010/11 Reporting Year

This document contains a strategic overview of the Constabulary's performance. It has a variety of performance measures within it. The format of the profile has been aligned to the Policing Priorities identified by the Control Strategy. It provides information on our performance against Force targets, some of the APACS Indicators and the Policing Pledge. It also aims to provide supplementary information to assist in understanding reasons behind the performance in these areas. It has been designed as a headline document that will enable our customers, both internally and externally, to easily assess performance information for key domains. This year additional monitoring information within the six domains of the Policing Priorities will be published quarterly - a calendar of publication is located at the bottom of this page. If during a month an issue is identified which needs to be highlighted this will be done through 'exception reporting'.

A matrix can be found at the front of the profile which reflects our year to date performance against our targets.

Performance in key areas is then explored in more depth with an indication of where each measure has originated - for example, APACS Indicator or a Force Control Strategy (FCS) measure.

Where applicable, within the document, MSG (Most Similar Group) data is published along with the crime and detection data. MSGs are calculated by the Home Office based on a number of socio-demographic & geographic variables which are strongly linked to crime/incident levels and the fear of crime. These groups provide a benchmark for comparison of crime and detection rates. Below the applicable crime tables there are three rows relating to MSG data. The first provides the MSG position for the OCU/Force for that crime type. The second displays OCU Actual, this is the number of offences per 1,000 population. The third row shows the MSG Average which is the total number of offences per 1,000 population divided by the number within the MSG. The same three rows are provided in relation to detection data, where data is provided in % figures rather than per 1,000 population.

Please note: iQuanta data is provisional. Within the profile, Hampshire data is published and compared against the MSG average. The other forces within Hampshire's MSG are: Avon and Somerset, Bedfordshire, Essex Hertfordshire, Kent, Sussex and Thames Valley. We are unable to provide figures from iQuanta for these forces, due to the provisional nature of this data.

This document is then taken forward by key stakeholders within the organisation to the Force Performance Review Group, where it is used to highlight areas of good performance and those for development.

Crime OCU contribute to the following areas within this document, either via investigation, forensic support, and/or review of these crimes: homicide, serious violent, sexual and acquisitive crime, class A drug supply, drug seizures, domestic violence/hate crime, FIU form submissions, gun/knife crime (where this results in a major investigation/forensic support).

This is an evolving document and as such, the contents of which may alter over time and any feedback would be welcomed by the Performance Review Team.

Calendar of Quarterly Reporting

April - Catching criminals & managing offenders and Protecting our communities
May - Making the most of our resources and Equipping our team to deliver
June - Providing an excellent service and An active presence in every neighbourhood
July - Catching criminals & managing offenders and Protecting our communities
August - Making the most of our resources and Equipping our team to deliver
September - Providing an excellent service and An active presence in every neighbourhood
October - Catching criminals & managing offenders and Protecting our communities
November - Making the most of our resources and Equipping our team to deliver
December - Providing an excellent service and An active presence in every neighbourhood
January - Catching criminals & managing offenders and Protecting our communities
February - Making the most of our resources and Equipping our team to deliver
March - The year end profile will have all six domain areas included

MSG Colour Key

| Force | OCU |
|-------|-------|
| 1-2 | 1-4 |
| 3-4 | 5-8 |
| 5-6 | 9-12 |
| 7-8 | 13-15 |

Index

Page FCS = Force Control Strategy; PRT = Performance Review Team

Year to date performance matrix

| | | | | |
|---|-----------------------------|--|--|---|
| 2 | Summary | | | including notes on matrices terminology |
| 3 | Index | | | |
| 4 | Year to date targets matrix | | | |

Providing an excellent service

| | | | | |
|---|--|-----------|-----|------------------------------|
| 5 | National public confidence measure | APACS 2.2 | FCS | iQuanta |
| 5 | Local confidence survey data | | | Consultation & Research Team |
| 6 | Overall satisfaction | APACS 1.1 | FCS | Consultation & Research Team |
| 6 | Being kept informed | | FCS | Consultation & Research Team |
| 6 | Comparative satisfaction of minority ethnic groups | APACS 1.3 | | Consultation & Research Team |
| 6 | Satisfaction of victims of racist incidents | APACS 1.2 | | Consultation & Research Team |
| 6 | MSG user satisfaction data | | | Consultation & Research Team |

An active presence in every neighbourhood

| | | | | |
|---|------------------------------|--|-----|------------------|
| 7 | Rowdy and nuisance behaviour | | FCS | Business Objects |
| 8 | Criminal damage | | FCS | Business Objects |

Catching criminals and managing offenders

| | | | | |
|----|---|---------------|-----|------------------------|
| 9 | Serious acquisitive crime | APACS 5.2&6.2 | FCS | Business Objects |
| 10 | Breakdown: Robbery, dwelling burglary, vehicle crime | | | Business Objects |
| 10 | Breakdown: Theft of a motor vehicle, theft from a motor vehicle | | | Business Objects |
| 10 | Organised crime groups | | | 7 OCU Performance Team |

Protecting our communities

| | | | | |
|----|---|---------------|-----|------------------|
| 11 | Violence against the person with injury | APACS 5.5&5.6 | | Business Objects |
| 12 | Serious violent crime | APACS 5.1&6.1 | FCS | Business Objects |
| 13 | Assault with less serious injury | APACS 5.3 | FCS | Business Objects |
| 14 | Reduction in dwelling burglary | APACS 5.2 | | Business Objects |

Making the most of our resources

| | | | | |
|----|--|-----------|-----|-----------|
| 15 | Minority ethnic recruitment | | FCS | Personnel |
| 15 | Minority ethnic police officer recruitment | APACS 3.1 | | Personnel |
| 15 | Minority ethnic police staff recruitment | | | Personnel |
| 15 | Female officer representation | APACS 3.2 | | Personnel |

Equipping our team to deliver

| | | | | |
|----|--------------------------------------|--|--|------------------------------|
| 15 | Staff confidence in the organisation | | | Consultation & Research Team |
|----|--------------------------------------|--|--|------------------------------|

Monitoring Information for Providing an excellent service

| | | | | |
|----|----------------------------------|--|--|-----------------|
| 16 | Letters of appreciation | | | PSD |
| 16 | Reports of incivility | | | PSD |
| 16 | Allegations and their resolution | | | PSD |
| 17 | Responding to public contact | | | Call Management |
| 17 | Use of scheduled appointments | | | Call Management |

Monitoring Information for An active presence in every neighbourhood

| | | | | |
|----|-------------------------------------|--|--|----------------|
| 18 | Safer neighbourhood teams | | | CARM/Personnel |
| 18 | Safer neighbourhood team personnel | | | CARM/Personnel |
| 19 | Stop and search - Internal use only | | | ICR (Cyclops) |

Exception Reporting for Making the most of our resources

| | | | | |
|----|--------------------|--|--|-----------------------------------|
| 20 | Specials scorecard | | | Special Constabulary Co-Ordinator |
|----|--------------------|--|--|-----------------------------------|

Exception Reporting for Protecting our communities

| | | | | |
|----|----------------------------|--|--|------------------------|
| 21 | Specialist Support - 8 OCU | | | 8 OCU Performance Team |
|----|----------------------------|--|--|------------------------|

Year to date performance targets matrix

| | Target | Actual | Central | Isle of Wight | North & East | Portsmouth | Southampton | Western |
|--|--------------------------------------|----------|------------------------------------|---------------|--------------|------------|-------------|----------|
| Providing an excellent service | | | | | | | | |
| Confidence in local police | 55.3% | 52.3% | This is a Force measure | | | | | |
| Local confidence measure (latest quarter) | 87.3% | 81.0% | 84.0% | 81.0% | 79.0% | 78.0% | 80.0% | 83.0% |
| Overall satisfaction (data for rolling 12 months) | 68.0% | 69.0% | 71.0% | 71.0% | 70.0% | 67.0% | 65.0% | 72.0% |
| An active presence in every neighbourhood | | | | | | | | |
| Rowdy & nuisance behaviour (inc vehicle nuisance) | <17289 | 17503 | 3146 | 1133 | 3148 | 2878 | 4110 | 3088 |
| | OCU specific targets | | 3425 | 1135 | 3194 | 2699 | 3867 | 2969 |
| Reduce criminal damage | <6835 | 6877 | 1428 | 614 | 1280 | 948 | 1400 | 1207 |
| | OCU specific targets | | 1482 | 504 | 1336 | 883 | 1403 | 1228 |
| Catching criminals & managing offenders | | | | | | | | |
| Serious acquisitive crime SD | >15% | 11.4% | 12.0% | 16.7% | 11.9% | 7.8% | 14.0% | 9.5% |
| Organised crime group (OCG) - disruptions | >40% | 50% | Owned by Crime OCU | | | | | |
| Protecting our communities | | | | | | | | |
| Reduce violence against the person with injury | <3573 | 3776 | 761 | 322 | 643 | 695 | 823 | 532 |
| | OCU specific targets | | 726 | 244 | 589 | 638 | 832 | 544 |
| Reduction in dwelling burglary | <1331 | 1292 | 231 | 63 | 229 | 289 | 297 | 183 |
| | OCU specific targets | | 262 | 64 | 280 | 245 | 253 | 228 |
| Making the most of our resources | | | | | | | | |
| BME recruitment | >5% | 6.1% | This is a Force measure | | | | | |
| Equipping our staff to deliver | | | | | | | | |
| Staff confidence in the organisation | To be determined from initial survey | | No data available for June profile | | | | | |
| Force Total - targets achieved | 4 | 4 | 4 | 4 | 4 | 0 | 2 | 4 |

Notes to be read in conjunction with matrices

All citizen focus data
SD
BME
OCU specific targets

Based on "completely or very satisfied"
Sanction detections
Black and minority ethnic
OCU specific targets are rounded to 0 decimal places; the actual figure may therefore seem the same but appear amber due to this rounding

Force target areas for providing an excellent service

| | Target | Actual | Central | Isle of Wight | North & East | Portsmouth | Southampton | Western |
|--|--------|--------|-------------------------|---------------|--------------|------------|-------------|---------|
| Confidence in local police (latest data) | 55.3% | 52.3% | This is a Force measure | | | | | |
| Local Confidence Measure (latest data) | 87.3% | 81.0% | 84.0% | 81.0% | 79.0% | 78.0% | 80.0% | 83.0% |
| Overall satisfaction (rolling 12 months) | 68.0% | 69.0% | 71.0% | 71.0% | 70.0% | 67.0% | 65.0% | 72.0% |

National Public Confidence Measure

APACS 2.2 Force Target

This data is based on 'The police and local council are dealing with the anti-social behaviour and crime issues that matter in this area'. The Home Office has set a target to achieve a 12% improvement by 2012 against the baseline of 47.3%. Hampshire aimed to improve by 4% each year, as this is the second year, our target this year is an 8% improvement on baseline which equates to 55.3%

Dec-09

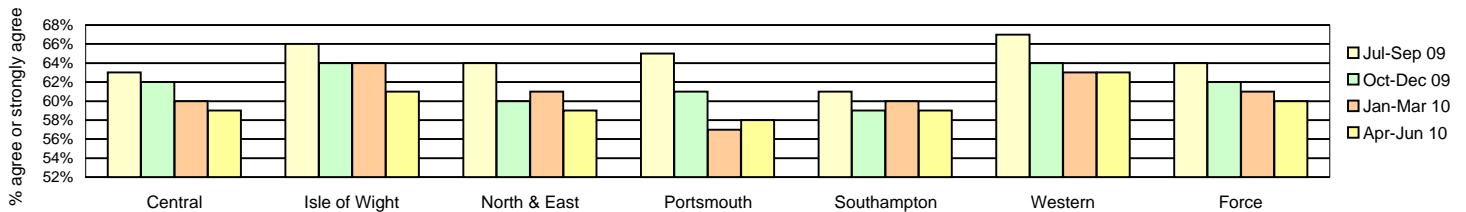
| | |
|--------------|--------|
| Hampshire | 52.3% |
| MSG Position | 3 of 8 |
| MSG average | 50.9% |

Local Confidence Survey Data

Figures relate to the percentage of respondents who agree or strongly agree with the question. Hampshire's local surveys have a confidence level of +/-4%. This means that changes of less than 4% may not reflect a real change in performance.

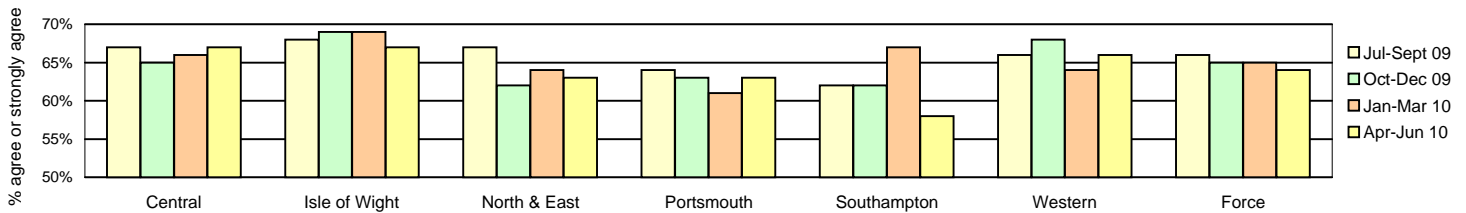
The police and local council are dealing with the anti-social behaviour and crime issues that matter in this area

| | Central | Isle of Wight | North & East | Portsmouth | Southampton | Western | Force | No. Surveys |
|-------------------------|---------|---------------|--------------|------------|-------------|---------|-------|-------------|
| July - September 2009 | 63% | 66% | 64% | 65% | 61% | 67% | 64% | 8128 |
| October - December 2009 | 62% | 64% | 60% | 61% | 59% | 64% | 62% | 3822 |
| January - March 2010 | 60% | 64% | 61% | 57% | 60% | 63% | 61% | 3708 |
| April - June 2010 | 59% | 61% | 59% | 58% | 59% | 63% | 60% | 3612 |



The police are dealing with the things that matter locally

| | Central | Isle of Wight | North & East | Portsmouth | Southampton | Western | Force | No. Surveys |
|-------------------------|---------|---------------|--------------|------------|-------------|---------|-------|-------------|
| July - September 2009 | 67% | 68% | 67% | 64% | 62% | 66% | 66% | 8128 |
| October - December 2009 | 65% | 69% | 62% | 63% | 62% | 68% | 65% | 3822 |
| January - March 2010 | 66% | 69% | 64% | 61% | 67% | 64% | 65% | 3708 |
| April - June 2010 | 67% | 67% | 63% | 63% | 58% | 66% | 64% | 3612 |



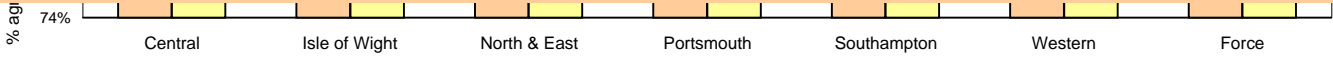
Taking everything into account, I have confidence in the Police in this area

Force Target

| Target: 87.3% | Central | Isle of Wight | North & East | Portsmouth | Southampton | Western | Force | No. Surveys |
|----------------------|---------|---------------|--------------|------------|-------------|---------|-------|-------------|
| January - March 2010 | 83% | 83% | 80% | 79% | 84% | 82% | 82% | 3708 |
| April - June 2010 | 84% | 81% | 79% | 78% | 80% | 83% | 81% | 3612 |



Force target areas for providing an excellent service



Force target areas for providing an excellent service

Overall satisfaction (user satisfaction survey results)

APACS 1.1 Force Target

Rolling 12 months data relates to: Jul 09 - Jun 10; rolling 3 months data relates to Apr 10 - Jun 10

Overall satisfaction includes burglary, vehicle crime, violent crime and minor injury RTCs

| Target 68% | Central | Isle of Wight | North & East | Portsmouth | Southampton | Western | Force | No. Surveys |
|-------------------|---------|---------------|--------------|------------|-------------|---------|-------|-------------|
| Rolling 12 months | 71% | 71% | 70% | 67% | 65% | 72% | 69% | 8208 |
| Rolling 3 months | 71% | 74% | 70% | 69% | 70% | 70% | 70% | 1846 |

Being kept informed (user satisfaction survey results)

Rolling 12 months data relates to: Jul 09 - Jun 10; rolling 3 months data relates to Apr 10 - Jun 10

Being kept informed includes burglary, vehicle crime, violent crime and minor injury RTCs

| | Central | Isle of Wight | North & East | Portsmouth | Southampton | Western | Force | No. Surveys |
|-------------------|---------|---------------|--------------|------------|-------------|---------|-------|-------------|
| Rolling 12 months | 62% | 63% | 58% | 57% | 57% | 62% | 60% | 7961 |
| Rolling 3 months | 63% | 64% | 59% | 60% | 61% | 60% | 61% | 1789 |

Comparative satisfaction of minority ethnic groups

APACS 1.3

Data relates to interviews which took place Jul 09 - Jun 10

These figures are for overall satisfaction for burglary, vehicle crime, violent crime, minor injury RTCs.

| Number of surveys in brackets | Completely and very satisfied | Completely, very and fairly satisfied | No Surveys |
|-------------------------------|-------------------------------|---------------------------------------|------------|
| White | 69.9% | 85.2% | 7732 |
| Minority Ethnic | 57.5% | 80.6% | 346 |
| Satisfaction Gap | 12.4% | 4.6% | |

Satisfaction of victims of racist incidents

APACS 1.2

These figures relate to interviews which took place Jul 09 - Jun 10; these will be updated quarterly

Racist incident overall satisfaction = % completely or very satisfied

| | Central | Isle of Wight | North & East | Portsmouth | Southampton | Western | Force |
|-------------------|---------|---------------|--------------|------------|-------------|---------|-------|
| Percentage | 62% | 88% | 59% | 63% | 58% | 63% | 62% |
| Number of surveys | 34 | 8 | 29 | 54 | 64 | 24 | 213 |

MSG information for user satisfaction

iQuanta data for MSG for the 12 months ending March 2010 (iQuanta calculate satisfaction % based on those responding that they are completely, very or fairly satisfied)

| | Previous MSG position | Current MSG position | Change | | Previous MSG position | Current MSG position | Change |
|---|-----------------------|----------------------|--------|---------------------------|-----------------------|----------------------|--------|
| Vehicle crime | | | | Burglary | | | |
| Ease of contact | 4/8 | 4/8 | ↔ | Ease of contact | 4/8 | 4/8 | ↔ |
| Actions taken | 4/8 | 4/8 | ↔ | Actions taken | 6/8 | 6/8 | ↔ |
| Follow up | 4/8 | 4/8 | ↔ | Follow up | 1/8 | 1/8 | ↔ |
| Treatment | 5/8 | 5/8 | ↔ | Treatment | 7/8 | 5/8 | ↑ |
| Whole Experience | 4/8 | 4/8 | ↔ | Whole Experience | 3/8 | 4/8 | ↓ |
| Violent crime | | | | RTC (minor injury) | | | |
| Ease of contact | 4/8 | 5/8 | ↓ | Ease of contact | 1/8 | 1/8 | ↔ |
| Actions taken | 3/8 | 4/8 | ↓ | Actions taken | 2/8 | 2/8 | ↔ |
| Follow up | 5/8 | 6/8 | ↓ | Follow up | 2/8 | 1/8 | ↑ |
| Treatment | 3/8 | 5/8 | ↓ | Treatment | 2/8 | 3/8 | ↓ |
| Whole Experience | 4/8 | 4/8 | ↔ | Whole Experience | 2/8 | 3/8 | ↓ |
| All users (excluding racist incidents) | | | | | | | |
| Ease of contact | 1/8 | 1/8 | ↔ | | | | |
| Actions taken | 4/8 | 4/8 | ↔ | | | | |
| Follow up | 2/8 | 1/8 | ↑ | | | | |
| Treatment | 4/8 | 5/8 | ↓ | | | | |
| Whole Experience | 4/8 | 3/8 | ↑ | | | | |

Force target areas for an active presence in every neighbourhood

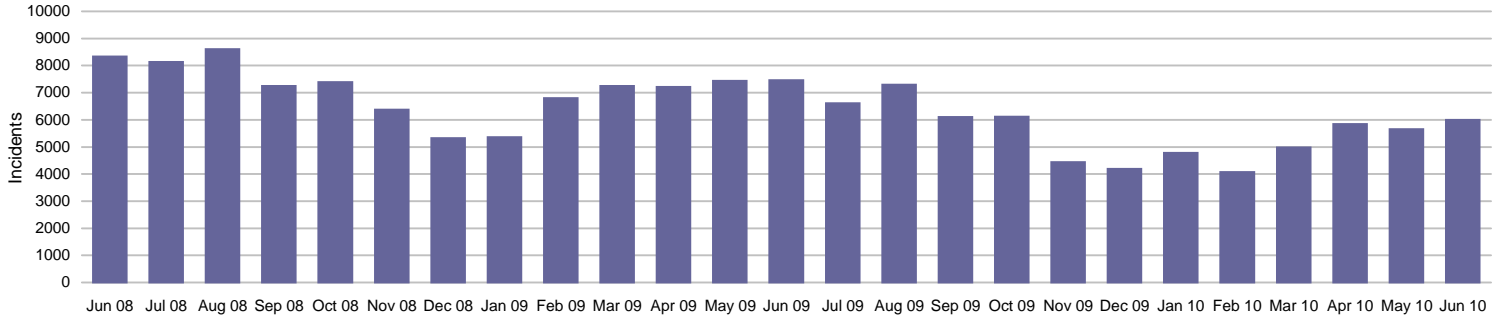
| | Target | Actual | Central | Isle of Wight | North & East | Portsmouth | Southampton | Western |
|---|----------------------|--------|---------|---------------|--------------|------------|-------------|---------|
| Rowdy & nuisance behaviour (inc Vehicle Nuisance) | 17289 | 17503 | 3146 | 1133 | 3148 | 2878 | 4110 | 3088 |
| | OCU specific targets | | 3425 | 1135 | 3194 | 2699 | 3867 | 2969 |
| Reduce criminal damage | 6835 | 6877 | 1428 | 614 | 1280 | 948 | 1400 | 1207 |
| | OCU specific targets | | 1482 | 504 | 1336 | 883 | 1403 | 1228 |

Rowdy & nuisance behaviour (including vehicle)

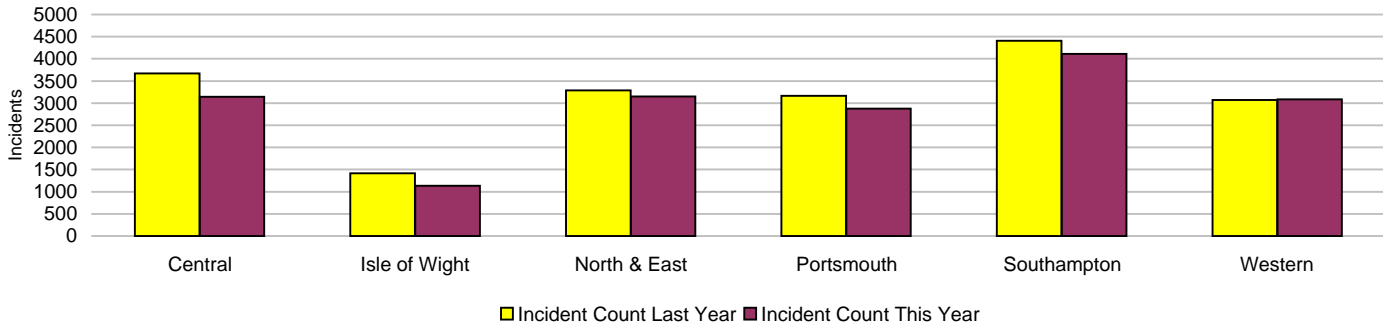
Force Target

In 2009-2010 Rowdy and Nuisance included Inappropriate use of Fireworks, Rowdy & Inconsiderate, Substance Misuse and Street Drinking, with Vehicle Related Nuisance being a separate entity for monitoring purposes however the decision this year has been to bring all key nuisance elements into one section. This data is sourced from RMS and does not reflect the complete NSIR return for Hampshire.

This target is based on a subset of the anti-social behaviour categories, it does not cover all aspects of anti-social behaviour.



| Incidents | Central | Isle of Wight | North & East | Portsmouth | Southampton | Western | Force |
|----------------------------|---------|---------------|--------------|------------|-------------|---------|---------------|
| YTD Incidents | 3146 | 1133 | 3148 | 2878 | 4110 | 3088 | 17503 |
| YTD Target | 3425 | 1135 | 3194 | 2699 | 3867 | 2969 | 17289 |
| YTD 09/10 Incidents | 3668 | 1418 | 3285 | 3166 | 4410 | 3074 | 19021 |
| This month | 1103 | 378 | 1037 | 996 | 1343 | 1143 | 6000 |
| % change from 09/10 | -14.23% | -20.10% | -4.17% | -9.10% | -6.80% | 0.46% | -7.98% |



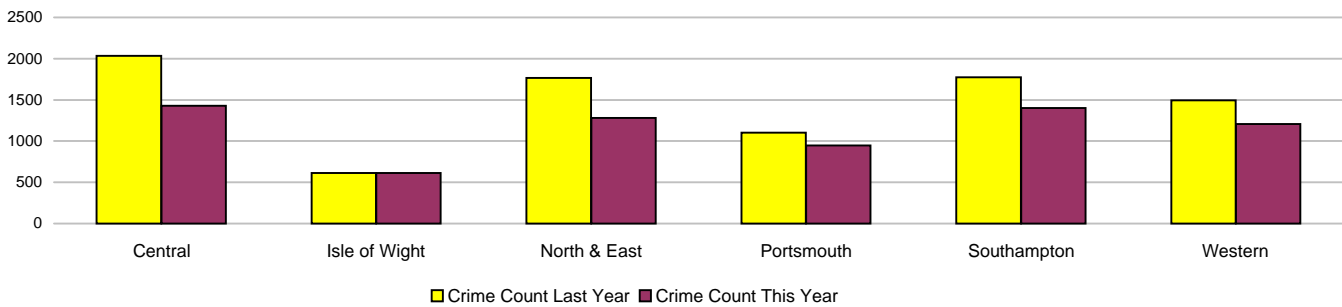
Force target areas for an active presence in every neighbourhood

Criminal damage



Crimes

| | Central | Isle of Wight | North & East | Portsmouth | Southampton | Western | Force |
|-------------------------|-----------------|-----------------|--------------|-----------------|-----------------|---------|----------------|
| YTD Crimes | 1428 | 614 | 1280 | 948 | 1400 | 1207 | 6877 |
| YTD Target | 1482 | 504 | 1336 | 883 | 1403 | 1228 | 6835 |
| YTD 09/10 Crimes | 2036 | 614 | 1766 | 1102 | 1776 | 1493 | 8787 |
| This month | 443 | 223 | 439 | 292 | 437 | 398 | 2232 |
| % change from 09/10 | -29.86% | 0.00% | -27.52% | -13.97% | -21.17% | -19.16% | -21.74% |
| MSG position | 14 of 15 | 14 of 15 | 11 of 15 | 14 of 15 | 15 of 15 | 6 of 15 | 7 of 8 |
| MSG actual | 3.439 | 4.074 | 2.915 | 4.851 | 6.044 | 2.863 | 3.717 |
| MSG average | 2.979 | 3.5 | 2.911 | 4.068 | 4.415 | 3.019 | 3.369 |



Detections

| | Central | Isle of Wight | North & East | Portsmouth | Southampton | Western | Force |
|-----------------------------|----------------|----------------|--------------|------------|----------------|---------|---------------|
| YTD Detection Rate | 13.52% | 14.98% | 13.98% | 12.87% | 13.21% | 12.59% | 13.42% |
| This month | 13.32% | 14.35% | 16.17% | 12.67% | 16.25% | 11.56% | 14.16% |
| YTD 09/10 Detections | 10.61% | 14.01% | 12.12% | 10.89% | 10.64% | 12.32% | 11.48% |
| MSG position | 8 of 15 | 6 of 15 | 9 of 15 | 2 of 15 | 6 of 15 | 9 of 15 | 6 of 8 |
| MSG actual | 13.12% | 16.19% | 13.28% | 14.25% | 13.13% | 12.85% | 13.49% |
| MSG average | 13.47% | 14.41% | 14.21% | 12.05% | 12.99% | 13.46% | 14.35% |

Note: Detections refer to Sanction Detections ONLY



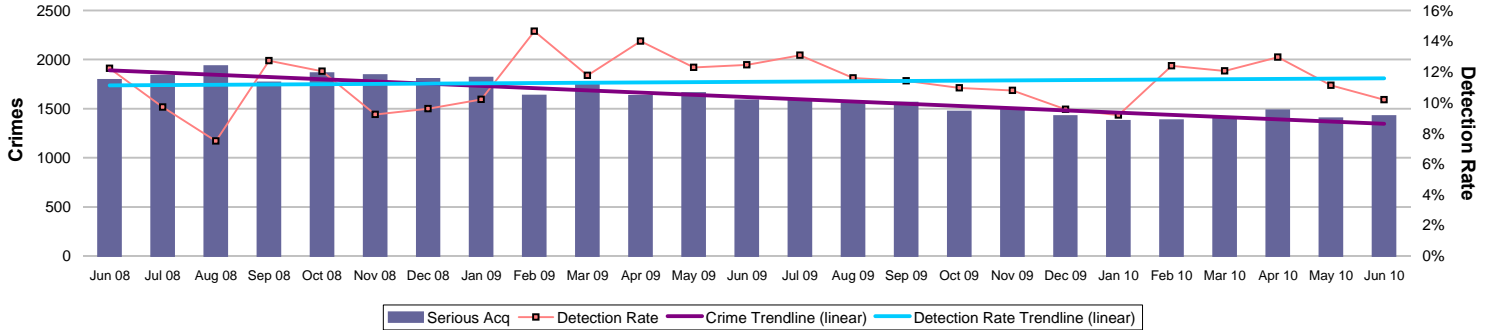
Force target areas for catching criminals and managing offenders

| | Target | Actual | Central | Isle of Wight | North & East | Portsmouth | Southampton | Western |
|------------------------------------|--------|--------|--------------------|---------------|--------------|------------|-------------|---------|
| Serious acquisitive detection rate | 15% | 11.4% | 12.03% | 16.67% | 11.88% | 7.83% | 14.05% | 9.54% |
| OCG disruptions | 40% | 50% | Owned by Crime OCU | | | | | |

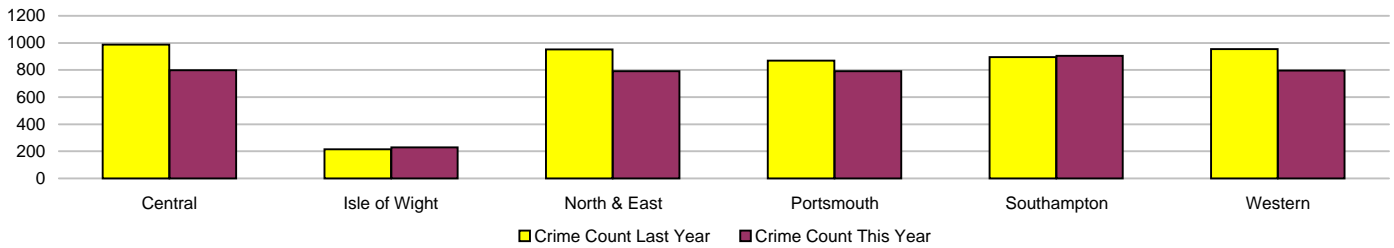
Serious acquisitive crime

APACS 5.2 Force Target

Serious acquisitive crime consists of crimsec codes 28, 29, 34A, 34B, 37/2, 45 and 48



| Crimes | Central | Isle of Wight | North & East | Portsmouth | Southampton | Western | Force |
|---------------------|---------|---------------|--------------|------------|-------------|---------|---------|
| YTD Crimes | 798 | 228 | 791 | 792 | 904 | 797 | 4310 |
| YTD 09/10 Crimes | 988 | 214 | 951 | 870 | 895 | 955 | 4873 |
| This month | 233 | 110 | 269 | 274 | 289 | 250 | 1425 |
| % change from 09/10 | -19.23% | 6.54% | -16.82% | -8.97% | 1.01% | -16.54% | -11.55% |
| MSG actual | 6 of 15 | 1 of 15 | 4 of 15 | 3 of 15 | 8 of 15 | 5 of 15 | 2 of 8 |
| MSG average | 1.937 | 1.177 | 1.932 | 3.757 | 3.942 | 1.92 | 2.323 |
| MSG average | 2.441 | 2.164 | 2.418 | 4.643 | 4.422 | 2.185 | 3.065 |



Detections

Target >15%

| | Central | Isle of Wight | North & East | Portsmouth | Southampton | Western | Force |
|----------------------|----------|---------------|--------------|------------|-------------|----------|--------|
| YTD Detection Rate | 12.03% | 16.67% | 11.88% | 7.83% | 14.05% | 9.54% | 11.44% |
| This month | 8.15% | 24.55% | 8.55% | 6.93% | 7.61% | 14.00% | 10.18% |
| YTD 09/10 Detections | 9.11% | 21.50% | 15.67% | 16.21% | 8.72% | 13.09% | 12.91% |
| MSG position | 10 of 15 | 11 of 15 | 11 of 15 | 10 of 15 | 7 of 15 | 13 of 15 | 5 of 8 |
| MSG actual | 10.58% | 13.71% | 10.29% | 11.39% | 14.12% | 10.26% | 11.47% |
| MSG average | 12.71% | 15.23% | 13.20% | 12.12% | 14.25% | 12.96% | 12.82% |

Note: Detections refer to Sanction Detections ONLY



Force target areas for catching criminals and managing offenders

Serious acquisitive crime breakdown

Robbery

| Year to date | Central | Isle of Wight | North & East | Portsmouth | Southampton | Western | Force |
|---------------------|---------|---------------|--------------|------------|-------------|----------|---------------|
| Crimes | 26 | 7 | 54 | 68 | 94 | 21 | 270 |
| 09/10 crimes | 18 | 5 | 34 | 75 | 84 | 41 | 257 |
| % change from 09/10 | 44.44% | 40.00% | 58.82% | -9.33% | 11.90% | -48.78% | 5.06% |
| MSG position | 7 of 15 | 1 of 15 | 10 of 15 | 5 of 15 | 10 of 15 | 9 of 15 | 3 of 8 |
| Detection rate | 15.38% | 14.29% | 25.93% | 11.76% | 39.36% | 33.33% | 26.30% |
| MSG position | 5 of 15 | 4 of 15 | 12 of 15 | 9 of 15 | 9 of 15 | 12 of 15 | 4 of 8 |
| June 2010 | | | | | | | |
| Crimes | 9 | 4 | 21 | 26 | 31 | 4 | 95 |
| Detection rate | 22.22% | 25.00% | 28.57% | 3.85% | 19.35% | 75.00% | 20.00% |

Dwelling burglary

| Year to date | Central | Isle of Wight | North & East | Portsmouth | Southampton | Western | Force |
|---------------------|----------|---------------|--------------|------------|-------------|---------|---------------|
| Crimes | 231 | 63 | 229 | 289 | 297 | 183 | 1292 |
| 09/10 crimes | 282 | 72 | 279 | 223 | 251 | 234 | 1341 |
| % change from 09/10 | -18.09% | -12.50% | -17.92% | 29.60% | 18.33% | -21.79% | -3.65% |
| MSG position | 4 of 15 | 2 of 15 | 6 of 15 | 7 of 15 | 3 of 15 | 2 of 15 | 2 of 8 |
| Detection rate | 19.05% | 17.46% | 16.16% | 13.15% | 18.86% | 26.78% | 18.19% |
| MSG position | 10 of 15 | 10 of 15 | 13 of 15 | 8 of 15 | 6 of 15 | 6 of 15 | 5 of 8 |
| June 2010 | | | | | | | |
| Crimes | 70 | 34 | 72 | 108 | 111 | 76 | 471 |
| Detection rate | 12.86% | 20.59% | 13.89% | 12.96% | 7.21% | 27.63% | 14.65% |

Vehicle crime

| Year to date | Central | Isle of Wight | North & East | Portsmouth | Southampton | Western | Force |
|---------------------|----------|---------------|--------------|------------|-------------|----------|----------------|
| Crimes | 541 | 158 | 508 | 435 | 513 | 593 | 2748 |
| 09/10 crimes | 688 | 137 | 638 | 572 | 560 | 680 | 3275 |
| % change from 09/10 | -21.37% | 15.33% | -20.38% | -23.95% | -8.39% | -12.79% | -16.09% |
| MSG position | 6 of 15 | 1 of 15 | 2 of 15 | 8 of 15 | 10 of 15 | 10 of 15 | 1 of 8 |
| Detection rate | 8.87% | 16.46% | 8.46% | 3.68% | 6.63% | 3.37% | 6.80% |
| MSG position | 11 of 15 | 10 of 15 | 10 of 15 | 10 of 15 | 8 of 15 | 14 of 15 | 6 of 8 |
| June 2010 | | | | | | | |
| Crimes | 154 | 72 | 176 | 140 | 147 | 170 | 859 |
| Detection rate | 5.19% | 26.39% | 3.98% | 2.86% | 5.44% | 6.47% | 6.64% |
| Detection numbers | 8 | 19 | 7 | 4 | 8 | 11 | 57 |

Theft of a motor vehicle

| Year to date | Central | Isle of Wight | North & East | Portsmouth | Southampton | Western | Force |
|-------------------|----------|---------------|--------------|------------|-------------|---------|---------------|
| Crimes | 106 | 44 | 132 | 74 | 126 | 99 | 581 |
| MSG position | 3 of 15 | 3 of 15 | 6 of 15 | 1 of 15 | 5 of 15 | 2 of 15 | 1 of 8 |
| Detection rate | 16.04% | 27.27% | 15.15% | 9.46% | 10.32% | 16.16% | 14.63% |
| MSG position | 10 of 15 | 1 of 15 | 7 of 15 | 7 of 15 | 10 of 15 | 7 of 15 | 4 of 8 |
| June 2010 | | | | | | | |
| Crimes | 48 | 17 | 47 | 27 | 50 | 43 | 232 |
| Detection rate | 12.50% | 35.29% | 8.51% | 7.41% | 10.00% | 18.60% | 13.36% |
| Detection numbers | 6 | 6 | 4 | 2 | 5 | 8 | 31 |

Theft from a motor vehicle

| Year to date | Central | Isle of Wight | North & East | Portsmouth | Southampton | Western | Force |
|-------------------|----------|---------------|--------------|------------|-------------|----------|---------------|
| Crimes | 435 | 114 | 376 | 361 | 387 | 494 | 2167 |
| MSG position | 7 of 15 | 2 of 15 | 2 of 15 | 6 of 15 | 8 of 15 | 14 of 15 | 1 of 8 |
| Detection rate | 7.13% | 12.28% | 6.12% | 2.49% | 5.43% | 0.81% | 4.71% |
| MSG position | 10 of 15 | 15 of 15 | 11 of 15 | 11 of 15 | 7 of 15 | 14 of 15 | 7 of 8 |
| June 2010 | | | | | | | |
| Crimes | 106 | 55 | 129 | 113 | 97 | 127 | 627 |
| Detection rate | 1.89% | 23.64% | 2.33% | 1.77% | 3.09% | 2.36% | 4.15% |
| Detection numbers | 2 | 13 | 3 | 2 | 3 | 3 | 26 |

Robbery, dwelling burglary and vehicle crime are the component parts of serious acquisitive crime. These individual crime types do not have targets.

Number of Organised Crime Groups (OCGs) disrupted

The Force target for 2010/11 is to dismantle or disrupt at least 40% of identified organised crime groups as a result of police or multi agency activity.

Force Target

YTD June 2010

| | 2009/2010 | 2010/2011 |
|--|-----------|-----------|
| Number of OCGs identified and mapped | 8 | 2 |
| Number of OCGs disrupted or partially disrupted through Crime OCU activity | 4 | 1 |

Force target areas for catching criminals and managing offenders

| | | |
|---|----|----|
| Number of OCGs subject to tactical activity | 36 | 33 |
|---|----|----|

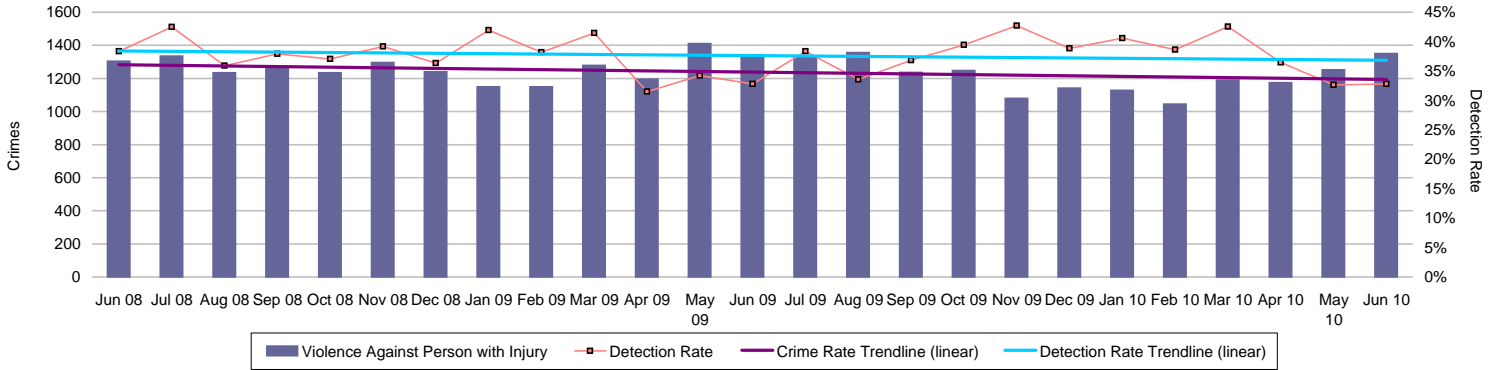
Force target areas for protecting our communities

| | Target | Actual | Central | Isle of Wight | North & East | Portsmouth | Southampton | Western |
|--------------------------------|----------------------|--------|---------|---------------|--------------|------------|-------------|---------|
| Reduction of VAP with injury | 3573 | 3776 | 761 | 322 | 643 | 695 | 823 | 532 |
| | OCU specific targets | | 726 | 244 | 589 | 638 | 832 | 544 |
| Reduction in dwelling burglary | 1331 | 1292 | 231 | 63 | 229 | 289 | 297 | 183 |
| | OCU specific targets | | 262 | 64 | 280 | 245 | 253 | 228 |

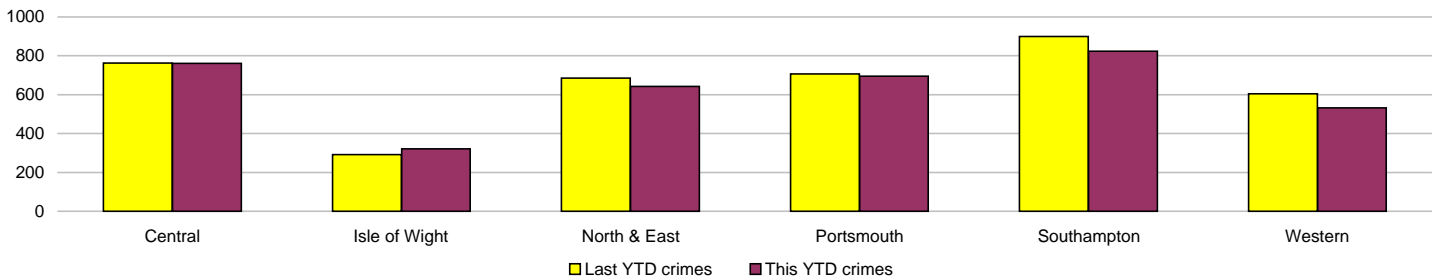
Violence against the person (VAP) with injury

VAP with injury crimsec codes 1, 2, 4.1-4.4, 4.6-4.10, 5A, 5B, 5C, 8F, 8G, 8H, 8J, 8K and 37.1

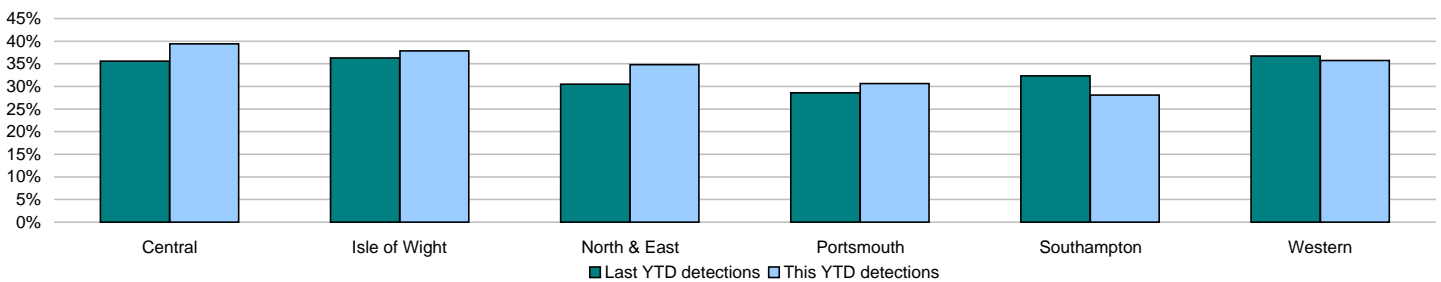
Force Target



| Crimes | Central | Isle of Wight | North & East | Portsmouth | Southampton | Western | Force |
|---------------------|----------|---------------|--------------|------------|-------------|----------|--------|
| YTD Crimes | 761 | 322 | 643 | 695 | 823 | 532 | 3776 |
| YTD Target | 726 | 244 | 589 | 638 | 832 | 544 | 3573 |
| YTD 09/10 Crimes | 762 | 292 | 685 | 707 | 899 | 605 | 3950 |
| This month | 257 | 126 | 243 | 231 | 303 | 190 | 1350 |
| % change from 09/10 | -0.13% | 10.27% | -6.13% | -1.70% | -8.45% | -12.07% | -4.41% |
| MSG position | 14 of 15 | 15 of 15 | 10 of 15 | 14 of 15 | 15 of 15 | 11 of 15 | 8 of 8 |
| MSG actual | 3.964 | 4.63 | 3.281 | 7.058 | 7.893 | 3.318 | 4.54 |
| MSG average | 3.091 | 3.447 | 3.068 | 4.846 | 5.389 | 3.022 | 3.609 |



| Detections | Central | Isle of Wight | North & East | Portsmouth | Southampton | Western | Force |
|---------------------------|----------|---------------|--------------|------------|-------------|---------|--------|
| YTD Detection Rate | 39.42% | 37.89% | 34.84% | 30.65% | 28.07% | 35.71% | 33.90% |
| This month | 37.74% | 34.13% | 32.51% | 33.77% | 27.06% | 33.68% | 32.81% |
| YTD 09/10 Detections | 35.56% | 36.30% | 30.51% | 28.57% | 32.37% | 36.69% | 32.94% |
| MSG position | 13 of 15 | 13 of 15 | 10 of 15 | 10 of 15 | 11 of 15 | 9 of 15 | 7 of 8 |
| MSG actual | 38.61% | 40.73% | 42.23% | 40.23% | 38.74% | 43.37% | 40.47% |
| MSG average | 44.74% | 47.25% | 46.52% | 42.17% | 43.02% | 43.78% | 47.04% |

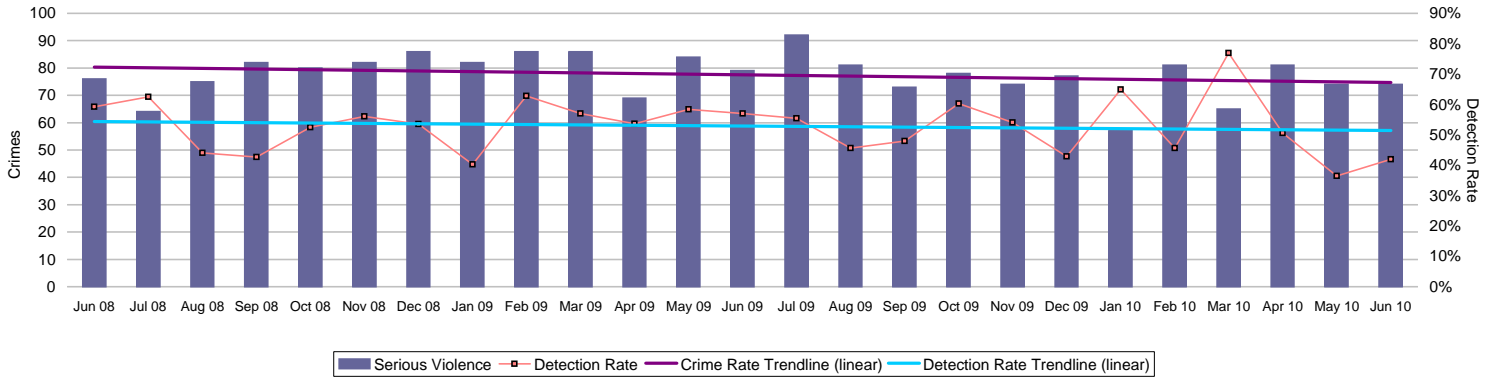


Force target areas for protecting our communities

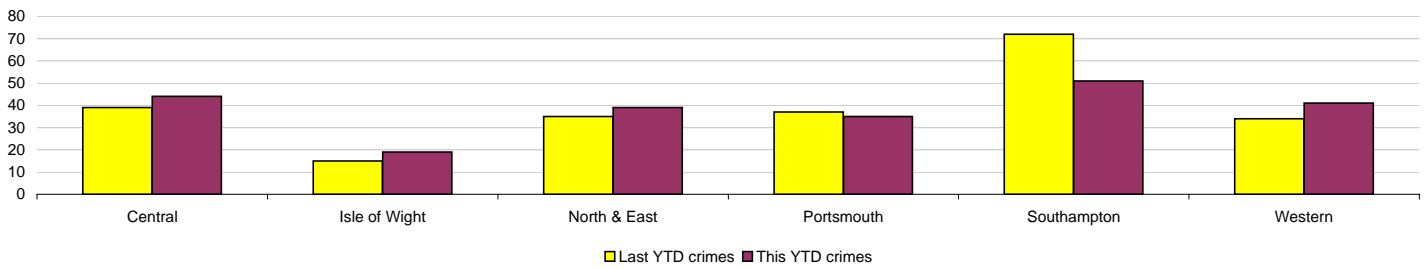
Serious violent crime

APACS 5.1

Serious violent crime consists of crimsec codes 1, 2, 4.1-4.4, 4.6, 4.8, 5A, 5B, 5C, 8F, 8H and 37.1

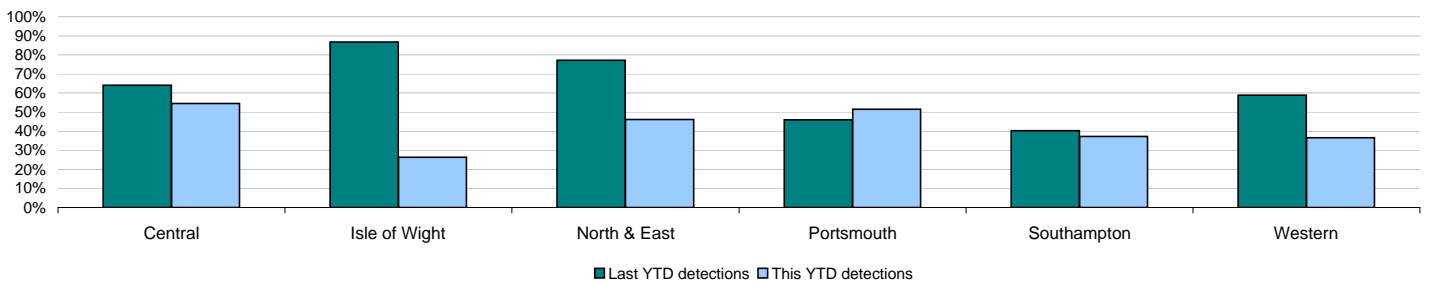


| Crimes | Central | Isle of Wight | North & East | Portsmouth | Southampton | Western | Force |
|-------------------------|----------|---------------|--------------|------------|-------------|----------|---------------|
| YTD Crimes | 44 | 19 | 39 | 35 | 51 | 41 | 229 |
| YTD 09/10 Crimes | 39 | 15 | 35 | 37 | 72 | 34 | 232 |
| This month | 9 | 7 | 12 | 12 | 14 | 20 | 74 |
| % change from 09/10 | 12.82% | 26.67% | 11.43% | -5.41% | -29.17% | 20.59% | -1.29% |
| MSG position | 11 of 15 | 12 of 15 | 11 of 15 | 6 of 15 | 8 of 15 | 10 of 15 | 6 of 8 |
| MSG actual | 0.109 | 0.128 | 0.09 | 0.186 | 0.222 | 0.088 | 0.124 |
| MSG average | 0.097 | 0.113 | 0.086 | 0.23 | 0.251 | 0.083 | 0.112 |



| Detections | Central | Isle of Wight | North & East | Portsmouth | Southampton | Western | Force |
|-----------------------------|---------|---------------|--------------|------------|-------------|----------|---------------|
| YTD Detection Rate | 54.55% | 26.32% | 46.15% | 51.43% | 37.25% | 36.59% | 43.23% |
| This month | 100.00% | 14.29% | 41.67% | 41.67% | 50.00% | 20.00% | 41.89% |
| YTD 09/10 Detections | 64.10% | 86.67% | 77.14% | 45.95% | 40.28% | 58.82% | 56.47% |
| MSG position | 8 of 15 | 12 of 15 | 12 of 15 | 5 of 15 | 4 of 15 | 11 of 15 | 4 of 8 |
| MSG actual | 57.83% | 44.29% | 52.38% | 46.45% | 51.85% | 55.88% | 52.14% |
| MSG average | 58.66% | 53.27% | 58.43% | 44.31% | 46.39% | 61.38% | 49.79% |

Note: Detections refer to Sanction Detections ONLY

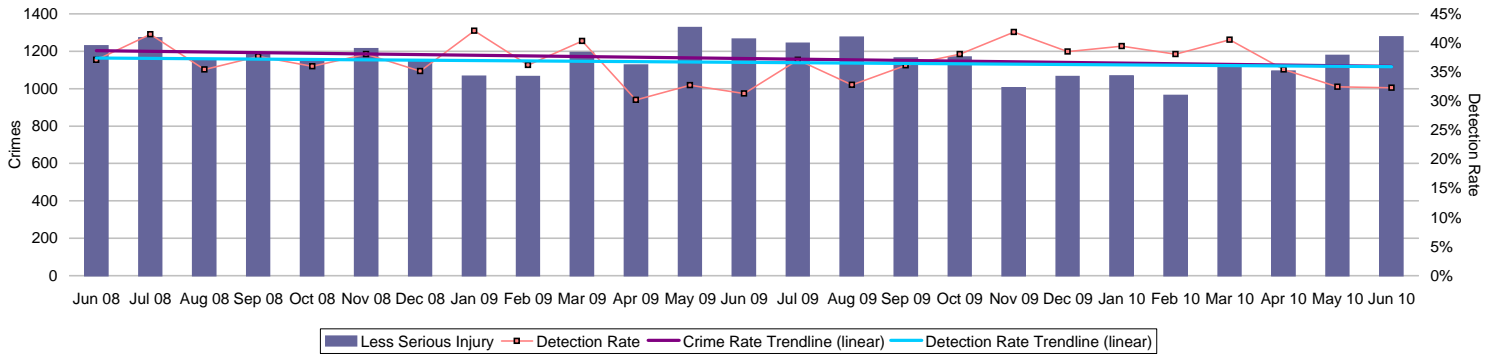


Force target areas for protecting our communities

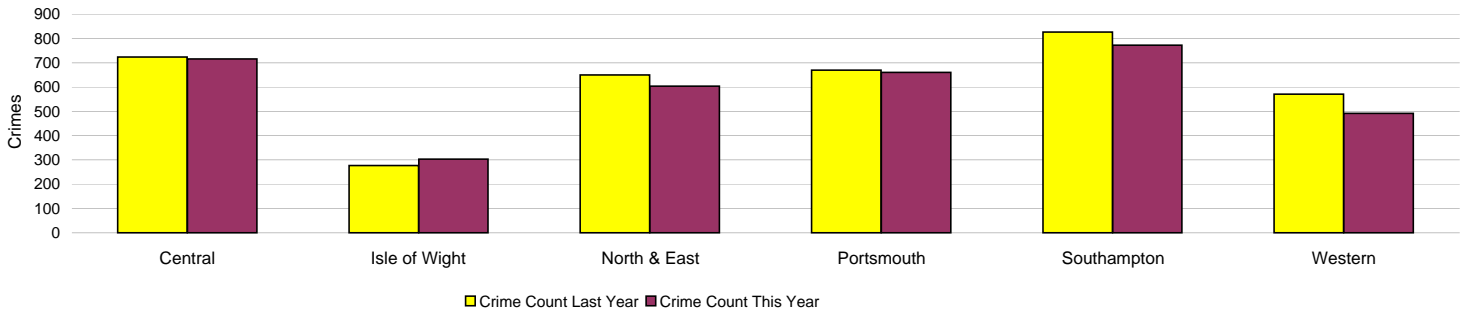
Assault with less serious injury

APACS 5.3

Assault with less serious injury consists of crimsec codes 8G and 8J

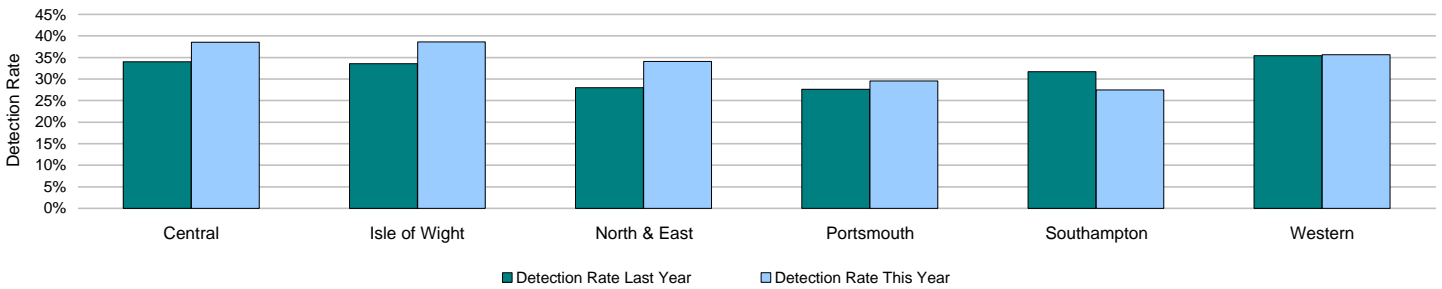


| Crimes | Central | Isle of Wight | North & East | Portsmouth | Southampton | Western | Force |
|-------------------------|-----------------|-----------------|--------------|-----------------|-----------------|---------|---------------|
| YTD Crimes | 716 | 303 | 604 | 660 | 772 | 491 | 3546 |
| YTD 09/10 Crimes | 723 | 277 | 650 | 670 | 826 | 570 | 3716 |
| This month | 248 | 119 | 231 | 219 | 289 | 170 | 1276 |
| % change from 09/10 | -0.97% | 9.39% | -7.08% | -1.49% | -6.54% | -13.86% | -4.57% |
| MSG position | 14 of 15 | 13 of 15 | 10 of 15 | 15 of 15 | 13 of 15 | 7 of 15 | 8 of 8 |
| MSG actual | 1.543 | 1.934 | 1.273 | 3.336 | 3.178 | 1.195 | 1.831 |
| MSG average | 1.218 | 1.557 | 1.15 | 1.982 | 2.203 | 1.193 | 1.405 |



| Detections | Central | Isle of Wight | North & East | Portsmouth | Southampton | Western | Force |
|-----------------------------|-----------------|----------------|--------------|------------|-------------|---------|---------------|
| YTD Detection Rate | 38.55% | 38.61% | 34.11% | 29.55% | 27.46% | 35.64% | 33.31% |
| This month | 35.48% | 35.29% | 32.03% | 33.33% | 25.95% | 35.29% | 32.29% |
| YTD 09/10 Detections | 34.02% | 33.57% | 28.00% | 27.61% | 31.72% | 35.44% | 31.49% |
| MSG position | 13 of 15 | 6 of 15 | 12 of 15 | 10 of 15 | 11 of 15 | 8 of 15 | 7 of 8 |
| MSG actual | 36.08% | 44.30% | 36.40% | 34.82% | 33.61% | 40.30% | 36.51% |
| MSG average | 39.36% | 42.44% | 41.33% | 36.53% | 37.38% | 39.03% | 41.35% |

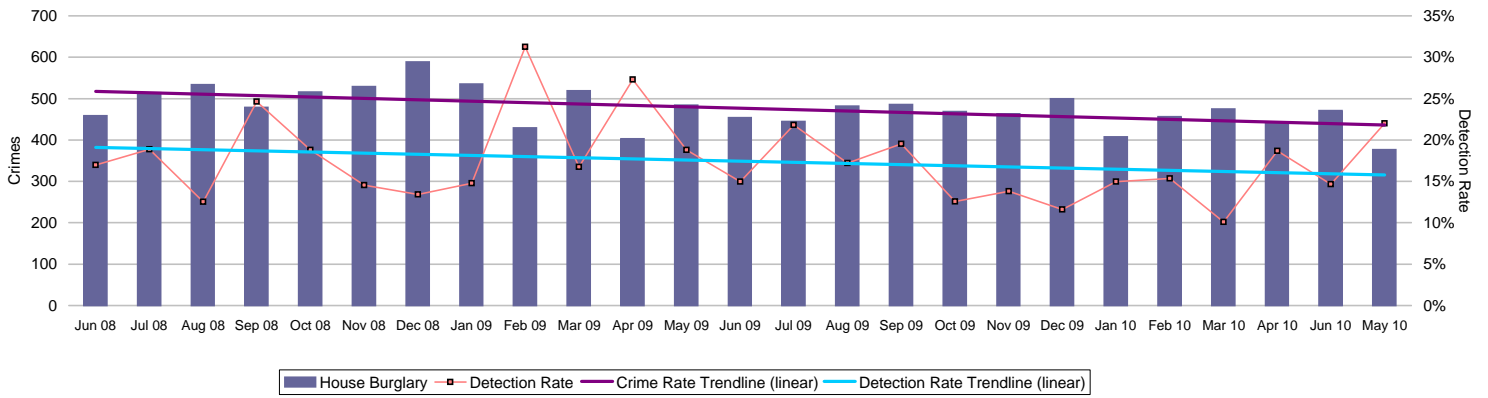
Note: Detections refer to Sanction Detections ONLY



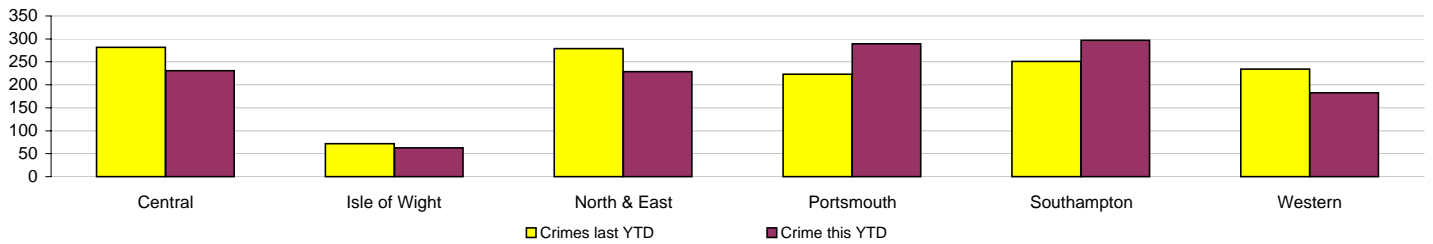
Force target areas for protecting our communities

Reduction in Dwelling Burglary

Force Target

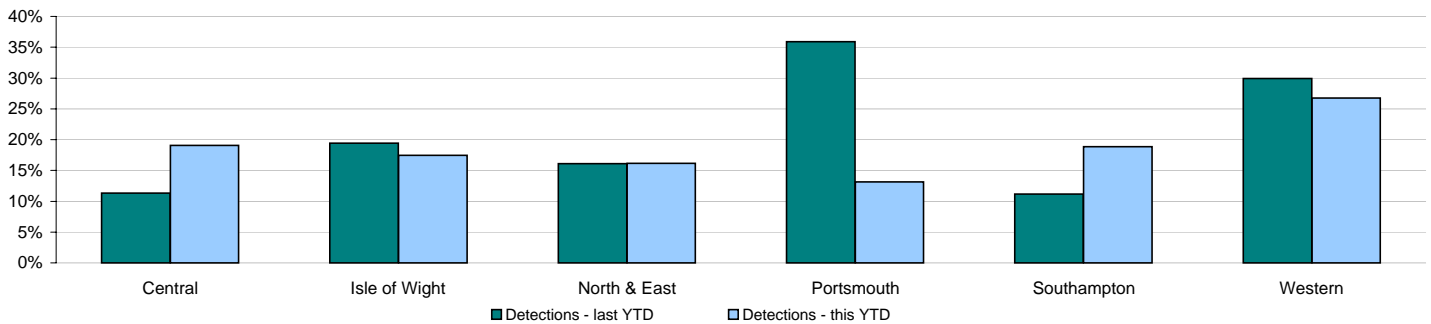


| Crimes | Central | Isle of Wight | North & East | Portsmouth | Southampton | Western | Force |
|-------------------------|---------|---------------|--------------|------------|-------------|---------|---------------|
| YTD Crimes | 231 | 63 | 229 | 289 | 297 | 183 | 1292 |
| YTD Target | 262 | 64 | 280 | 245 | 253 | 228 | 1331 |
| YTD 09/10 Crimes | 282 | 72 | 279 | 223 | 251 | 234 | 1341 |
| This month | 70 | 34 | 72 | 108 | 111 | 76 | 471 |
| % change from 09/10 | -18.09% | -12.50% | -17.92% | 29.60% | 18.33% | -21.79% | -3.65% |
| MSG position | 4 of 15 | 2 of 15 | 6 of 15 | 7 of 15 | 3 of 15 | 2 of 15 | 2 of 8 |
| MSG actual | 1.35 | 0.736 | 1.477 | 3.918 | 2.812 | 0.863 | 1.641 |
| MSG average | 1.843 | 1.553 | 1.778 | 3.475 | 3.647 | 1.619 | 2.371 |



| Detections | Central | Isle of Wight | North & East | Portsmouth | Southampton | Western | Force |
|-----------------------------|----------|---------------|--------------|------------|-------------|---------|---------------|
| YTD Detection Rate | 19.05% | 17.46% | 16.16% | 13.15% | 18.86% | 26.78% | 18.19% |
| This month | 12.86% | 20.59% | 13.89% | 12.96% | 7.21% | 27.63% | 14.65% |
| YTD 09/10 Detections | 11.35% | 19.44% | 16.13% | 35.87% | 11.16% | 29.91% | 20.06% |
| MSG position | 10 of 15 | 10 of 15 | 13 of 15 | 8 of 15 | 6 of 15 | 6 of 15 | 5 of 8 |
| MSG actual | 15.95% | 16.02% | 12.12% | 14.66% | 19.40% | 19.49% | 15.90% |
| MSG average | 17.09% | 18.16% | 17.71% | 13.45% | 17.44% | 17.51% | 16.32% |

Note: Detections refer to Sanction Detections ONLY



Force target areas for making the most of our resources

Force target areas for equipping our staff to deliver

| | Target | Actual | Central | Isle of Wight | North & East | Portsmouth | Southampton | Western |
|-----------------|--------------------|--------|-------------------------|---------------|--------------|------------|-------------|---------|
| BME recruitment | 5% of all recruits | 6.1% | This is a Force measure | | | | | |

| | Target | Actual | Central | Isle of Wight | North & East | Portsmouth | Southampton | Western |
|--------------------------------------|--------------|--------|--------------|---------------|--------------|------------|-------------|---------|
| Staff confidence in the organisation | To be agreed | | To be agreed | | | | | |

Minority ethnic recruitment

Force Target

The 2010/11 target is based on all police staff and police officer recruits. Data published previously has related only to police officer recruitment.

| | All recruits | Minority ethnic recruits | Percentage |
|---------------|--------------|--------------------------|------------|
| YTD June 2010 | 115 | 7 | 6.1% |

Minority ethnic police officer recruitment

APACS 3.1

| | All recruits | Minority ethnic recruits | Percentage |
|----------------|--------------|--------------------------|------------|
| YTD June 2010* | 39 | 4 | 10.3% |

Minority ethnic police staff recruitment (incl PCSOs)

| | All recruits | Minority ethnic recruits | Percentage |
|----------------|--------------|--------------------------|------------|
| YTD June 2010* | 76 | 3 | 3.9% |

Note: * headcount, recruits only

Female officer representation

APACS 3.2

| | Male strength | Female strength | Percentage |
|-----------------|---------------|-----------------|------------|
| YTD June 2010** | 2641.3 | 1033.4 | 28.12% |

Note: ** as at 30-06-2010

Staff confidence in the organisation

Force Target

This is a new target area for 2010/11. This will be based up on the results of the internal staff survey. At the current time it is not possible to set a specific target as no baseline data is available. A target will be established once data from the internal staff survey becomes available.

Monitoring information for providing an excellent service

Letters of appreciation

| | Central | Isle of Wight | North & East | Portsmouth | Southampton | Western | Crime | Operations | Other | Total |
|--------------|----------|---------------|--------------|------------|-------------|-----------|----------|------------|----------|------------|
| April 2010 | 0 | 5 | 0 | 0 | 16 | 7 | 0 | 5 | 0 | 33 |
| May 2010 | 0 | 6 | 18 | 0 | 13 | 15 | 1 | 14 | 0 | 67 |
| June 2010 | 0 | 0 | 0 | 0 | 0 | 0 | 7 | 0 | 0 | 7 |
| Total | 0 | 11 | 18 | 0 | 29 | 22 | 8 | 19 | 0 | 107 |

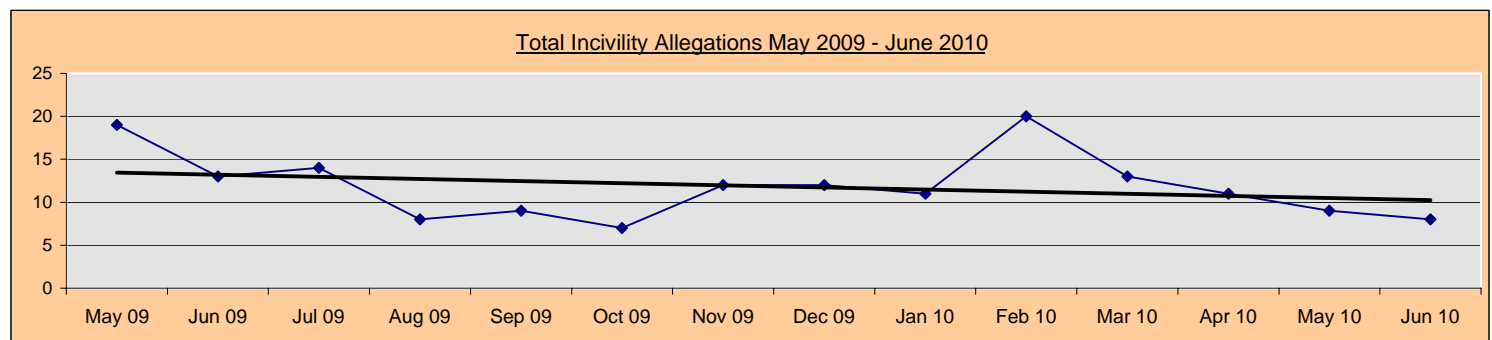
Reports of incivility

| | Central | Isle of Wight | North & East | Portsmouth | Southampton | Western | Crime | Operations | Other | Total |
|--------------|----------|---------------|--------------|------------|-------------|----------|----------|------------|----------|-----------|
| April 2010 | 1 | 2 | 2 | 3 | 1 | 1 | 0 | 1 | 0 | 11 |
| May 2010 | 4 | 1 | 0 | 0 | 2 | 1 | 0 | 1 | 0 | 9 |
| June 2010 | 0 | 0 | 1 | 2 | 3 | 2 | 0 | 0 | 0 | 8 |
| Total | 5 | 3 | 3 | 5 | 6 | 4 | 0 | 2 | 0 | 28 |

NOTE: OCU complaints totals may include complaints regarding officers who are serving within the area but are not located at that OCU

NOTE: Data/figures may change due to additional or new information and there may be multiple allegations per complaint

| By month | Aug 09 | Sep 09 | Oct 09 | Nov 09 | Dec 09 | Jan 10 | Feb 10 | Mar 10 | Apr 10 | May 10 | Jun 10 |
|------------|--------|--------|--------|--------|--------|--------|--------|--------|--------|--------|--------|
| Incivility | 8 | 9 | 7 | 12 | 12 | 11 | 20 | 13 | 11 | 9 | 8 |



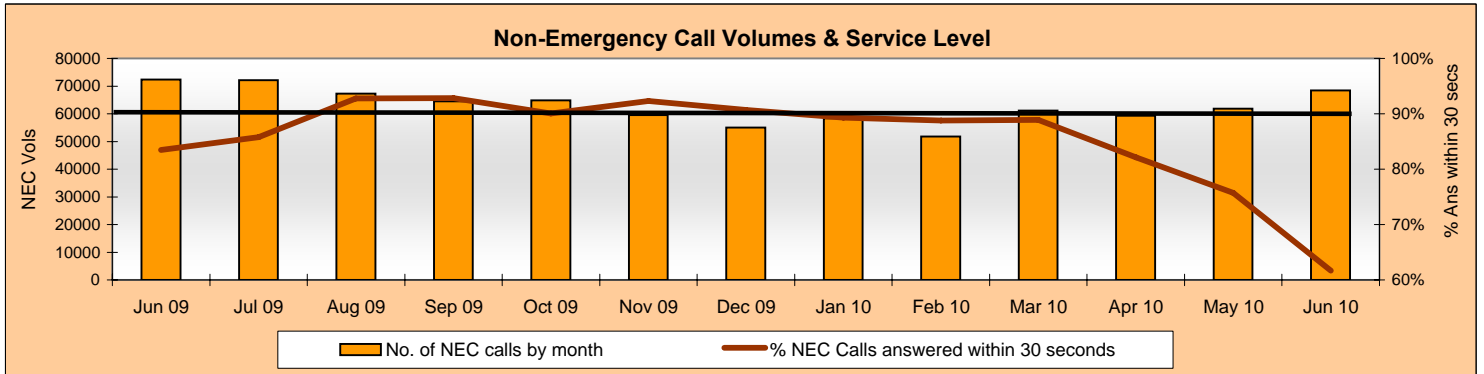
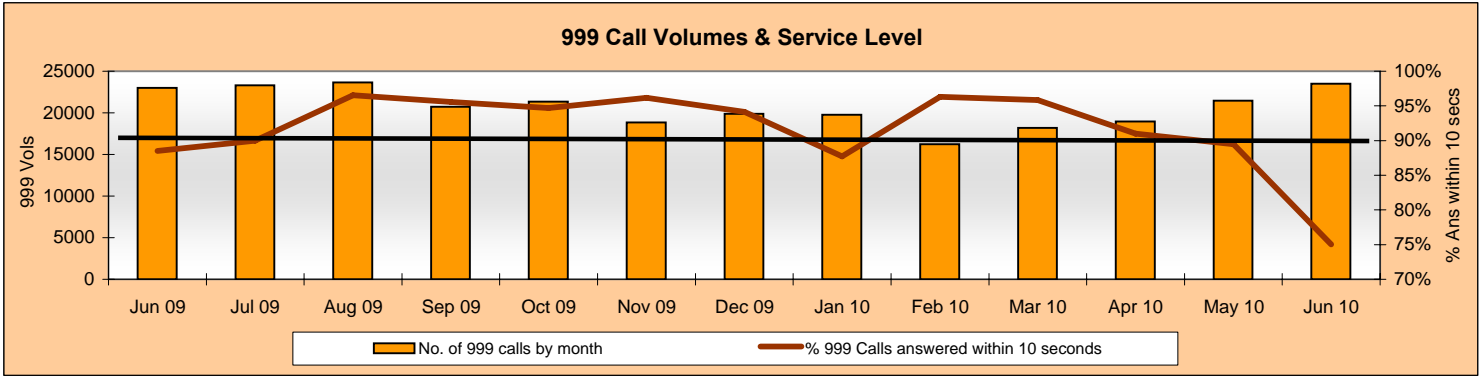
Allegations and their resolutions - for June 2010

| | |
|-------------------------|------------|
| Locally resolved by OCU | 51 |
| Locally resolved by PSD | 2 |
| Withdrawn | 3 |
| Dispensed by IPCC | 12 |
| Unsubstantiated | 53 |
| Substantiated | 10 |
| Total | 131 |

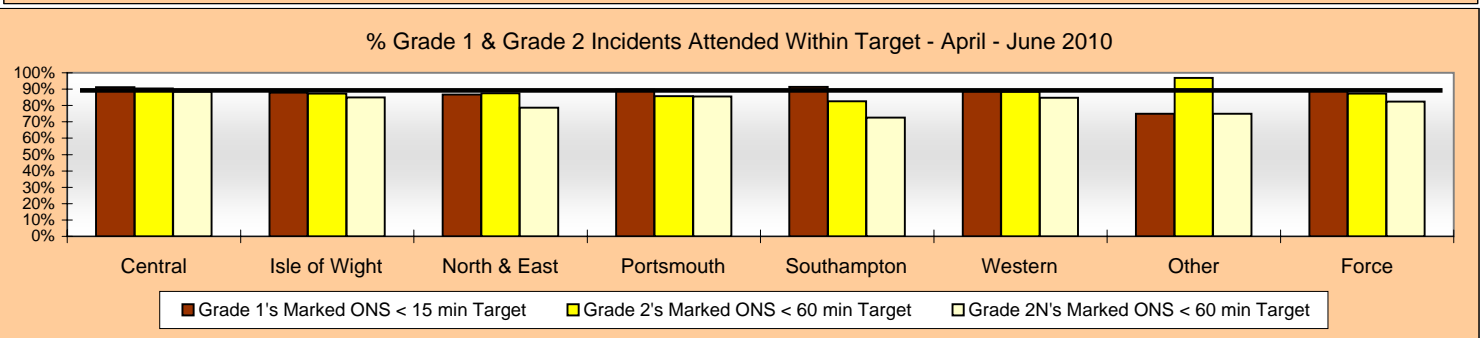
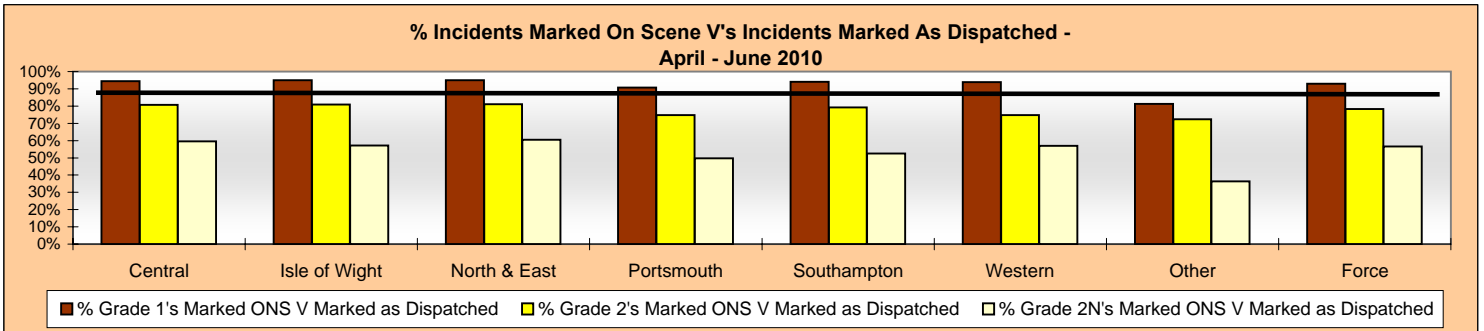
Monitoring information for providing an excellent service

Responding to public contact

Call Volumes: Target is to answer 90% of 999 calls within 10 seconds and 90% of Non-Emergency calls within 30 seconds.



Officers Attended Within Target: This is the time from an incident being created to the 1st Officer being marked on scene on Altaris. The % of Officers attending within target is based on the number of incidents marked on scene within target vs. the number of incidents marked on scene. If an incident is marked as having an officer dispatched, but is then subsequently not marked as On Scene, these incidents are excluded



Use of Scheduled Appointments

| Q1 Apr-Jun10 | Available Slots | Withdrawn by OCU | % Withdrawn | No. Actual Available | Appoint.'s Scheduled | % Appoint.'s Used |
|---------------|-----------------|------------------|-------------|----------------------|----------------------|-------------------|
| Central | 5,806 | 305 | 5% | 5,501 | 873 | 16% |
| Isle of Wight | 505 | 68 | 13% | 437 | 401 | 92% |
| North & East | 991 | 301 | 30% | 690 | 520 | 75% |
| Portsmouth | 719 | 193 | 27% | 526 | 440 | 84% |
| Southampton | 1,917 | 188 | 10% | 1,729 | 505 | 29% |
| Western | 1,417 | 630 | 44% | 787 | 432 | 55% |
| Force | 11,355 | 1,685 | 15% | 9,670 | 3,171 | 33% |

Monitoring information for an active presence in every neighbourhood

Safer Neighbourhood Teams (SNT)

| Abstractions | Central | Isle of Wight | North & East | Portsmouth | Southampton | Western | Force |
|--------------|---------|---------------|--------------|------------|-------------|---------|--------------|
| April 2010 | 0.87% | 1.84% | 2.49% | 3.22% | 1.82% | 2.56% | 2.05% |
| May 2010 | 2.69% | 1.80% | 1.46% | 1.23% | 1.68% | 3.36% | 2.15% |
| June 2010 | 4.32% | 10.10% | 4.30% | 2.56% | 3.01% | 4.23% | 4.26% |

Target = maximum 5% abstractions

In August 2009 a review of Abstraction data was undertaken to ensure a consistent approach was used across the Force. Prior to this date individual OCUs used slightly differing methodology therefore it is not possible to compare the data for April - July with data from August onwards, or to compare the data for individual OCU's with one another prior to August.

Safer Neighbourhood Team Personnel Data

| | Central | Isle of Wight | North & East | Portsmouth | Southampton | Western | Force |
|-----------|---------|---------------|--------------|------------|-------------|---------|------------|
| Inspector | 10 | 2 | 11 | 4 | 6 | 7 | 40 |
| Sergeant | 26 | 10 | 17 | 10 | 14 | 18 | 95 |
| Constable | 87 | 27 | 80 | 47 | 60 | 80 | 381 |
| PCSO | 79 | 28 | 69 | 49 | 57 | 66 | 348 |

SNT strength by OCU - Police

| | Central | Isle of Wight | North & East | Portsmouth | Southampton | Western | Force |
|----------|---------|---------------|--------------|------------|-------------|---------|---------------|
| Strength | 114.8 | 37.05 | 102.9 | 58.6 | 77.5 | 100.7 | 491.55 |

SNT establishment and strength by OCU - PCSOs

| | Central | Isle of Wight | North & East | Portsmouth | Southampton | Western | Force |
|---------------|---------|---------------|--------------|------------|-------------|---------|---------------|
| Establishment | 74 | 28 | 67 | 50 | 59 | 59 | 337 |
| Strength | 79 | 27.3 | 68.2 | 48.12 | 56.7 | 64.6 | 343.92 |
| Vacancies | -5 | 0.7 | -1.2 | 1.88 | 2.3 | -5.6 | -6.92 |

Note: Personnel Planning are no longer able to provide 'length of service' information due to the implementation of the new organisation structure into Delphi. This has meant that all Staff and Police Officers have a position start date of 8 July 2009

Monitoring information for an active presence in every neighbourhood

Stop and Search

Breakdown of Stop & Search by OCU by Visual Ethnicity - Provisional Data

| YTD June 2010 | Central | Isle of Wight | North & East | Portsmouth | Southampton | Western | Other | Force |
|---------------|------------|---------------|--------------|------------|-------------|------------|----------|-------------|
| White | 675 | 1086 | 1230 | 729 | 772 | 527 | 5 | 5024 |
| Black | 16 | 12 | 103 | 43 | 112 | 17 | 3 | 306 |
| Asian | 7 | 7 | 82 | 9 | 59 | 15 | 0 | 179 |
| Other | 1 | 2 | 41 | 5 | 6 | 3 | 0 | 58 |
| Unknown | 11 | 15 | 24 | 11 | 12 | 4 | 0 | 77 |
| Total | 710 | 1122 | 1480 | 797 | 961 | 566 | 8 | 5644 |

| YTD - % splits | Central | Isle of Wight | North & East | Portsmouth | Southampton | Western | Other | Force |
|----------------|---------|---------------|--------------|------------|-------------|---------|-------|-------|
| White | 95.1% | 96.8% | 83.1% | 91.5% | 80.3% | 93.1% | 62.5% | 89.0% |
| Black | 2.3% | 1.1% | 7.0% | 5.4% | 11.7% | 3.0% | 37.5% | 5.4% |
| Asian | 1.0% | 0.6% | 5.5% | 1.1% | 6.1% | 2.7% | 0.0% | 3.2% |
| Other | 0.1% | 0.2% | 2.8% | 0.6% | 0.6% | 0.5% | 0.0% | 1.0% |
| Unknown | 1.5% | 1.3% | 1.6% | 1.4% | 1.2% | 0.7% | 0.0% | 1.4% |

No Further Action Rates as a Result of Stop and Search by Visual Ethnicity - Provisional Data

| YTD June 2010 | % NFA Rate |
|---------------|--------------|
| White | 79.0% |
| Black | 76.5% |
| Asian | 76.5% |
| Other | 86.2% |
| Unknown | 68.8% |
| Total | 78.8% |

* These figures relate to Stop & Search powers under the: Police and Criminal Evidence Act 1984, Criminal Justice & Public Order Act 1994, Misuse of Drugs Act 2971, Firearms Act 1968, Terrorism Act 2000 and other legislative provisions.

* These figures exclude those stops undertaken during the Isle of Wight Festival using the trial version of the new Stop Search ticket. They do include all stop and searches undertaken during the festival on the current ticket and scanned into ICR.

* Note: Some numbers are very small therefore caution should be applied when drawing conclusions. The figures are pulled from a live database, therefore these figures are subject to change as additional tickets are scanned into the system.

Proportion of stops being carried out by OCUs vs proportion of population

Use of the Stop & Search powers varies across OCUs. The below relates to the total population for the force and the total number of stop and searches.

| | Central | Isle of Wight | North & East | Portsmouth | Southampton | Western | Other |
|------------|---------|---------------|--------------|------------|-------------|---------|-------|
| Stops | 12.60% | 19.86% | 26.22% | 14.12% | 17.03% | 10.03% | 0.14% |
| Population | 22.59% | 7.56% | 24.41% | 10.71% | 12.53% | 22.19% | n/a |
| Difference | -10.00% | 12.30% | 1.81% | 3.41% | 4.50% | -12.16% | n/a |

* The Isle of Wight data is skewed by the Isle of Wight Festival during which period a large number of drugs searches are undertaken, predominantly on a population from outside of the Isle of Wight.

This system relies on Intelligent Character Recognition which is not 100% accurate, it is reliant on writing being very clear. This data has not been quality checked, it is returning the information which is in the system as it is.

Exception report for making the most of our resources

Special Constable Balanced Scorecard

| | Central | Isle of Wight | North & East | Portsmouth | Southampton | Western | Force | Average |
|--|---------|---------------|--------------|------------|-------------|---------|-------------|---------|
| Total number of operational hours | 968 | 376 | 1549 | 719 | 609 | 984 | 5205 | n/a |
| Number of operational hours per 1000 population | 2.3 | 2.7 | 3.5 | 3.8 | 3.2 | 2.8 | 2.3 | 3 |
| Average number of operational hours per officer | 11.5 | 18.8 | 18.2 | 10.6 | 9.8 | 14.1 | 10.3 | 14 |
| Leavers joining regular service or transferring to another Force | 0 | 0 | 1 | 1 | 1 | 3 | 6 | 1 |
| Leavers not joining regular service or transferring to another Force | 2 | 0 | 1 | 2 | 1 | 1 | 7 | 1 |
| Number of officers completing at least 16 hours of duty during the month | 37 | 5 | 50 | 27 | 17 | 40 | 176 | n/a |
| Total number of officers | 90 | 20 | 90 | 68 | 67 | 74 | 409 | n/a |
| Total number of joiners | 0 | 0 | 0 | 0 | 0 | 0 | 0 | n/a |

Gender

| | Central | Isle of Wight | North & East | Portsmouth | Southampton | Western | Force |
|--------|---------|---------------|--------------|------------|-------------|---------|------------|
| Male | 57 | 15 | 65 | 43 | 45 | 51 | 276 |
| Female | 27 | 5 | 20 | 25 | 17 | 19 | 113 |

Ethnicity

| | Central | Isle of Wight | North & East | Portsmouth | Southampton | Western | Force |
|------------------------|---------|---------------|--------------|------------|-------------|---------|------------|
| White | 83 | 20 | 82 | 66 | 60 | 70 | 381 |
| Mixed | 1 | 0 | 0 | 0 | 0 | 0 | 1 |
| Black or Black British | 0 | 0 | 2 | 0 | 1 | 0 | 3 |
| Asian or Asian British | 0 | 0 | 1 | 1 | 0 | 0 | 2 |
| Chinese or other | 0 | 0 | 0 | 1 | 1 | 0 | 2 |
| Not stated | 0 | 0 | 0 | 0 | 0 | 0 | 0 |

Age

| | Central | Isle of Wight | North & East | Portsmouth | Southampton | Western | Force |
|--------------|---------|---------------|--------------|------------|-------------|---------|------------|
| 25 and under | 35 | 4 | 25 | 38 | 18 | 32 | 152 |
| 26 to 40 | 30 | 6 | 34 | 19 | 40 | 22 | 151 |
| 41 to 55 | 16 | 8 | 22 | 8 | 3 | 15 | 72 |
| Over 55 | 4 | 2 | 4 | 2 | 1 | 1 | 14 |

Length of service

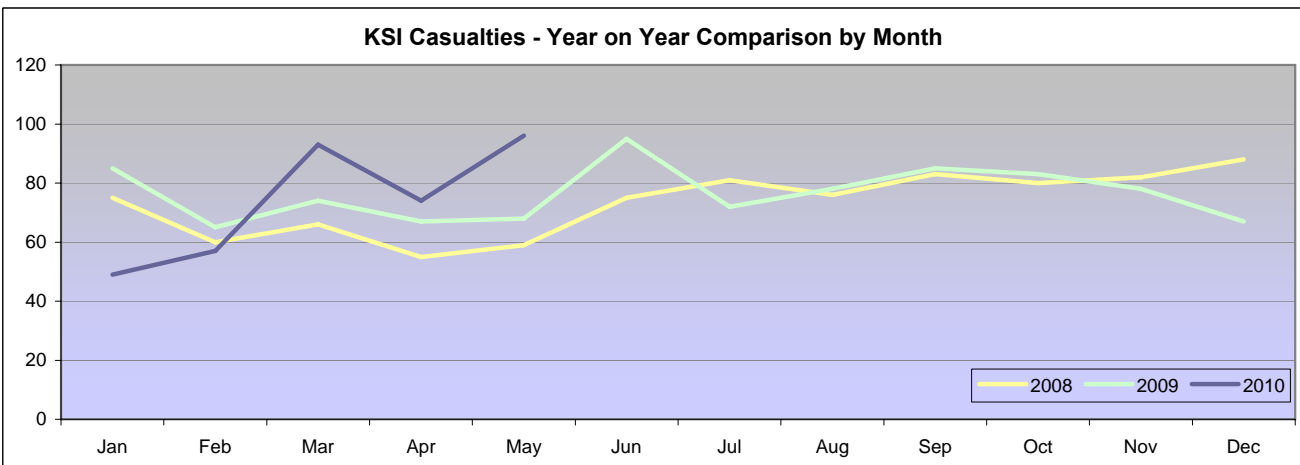
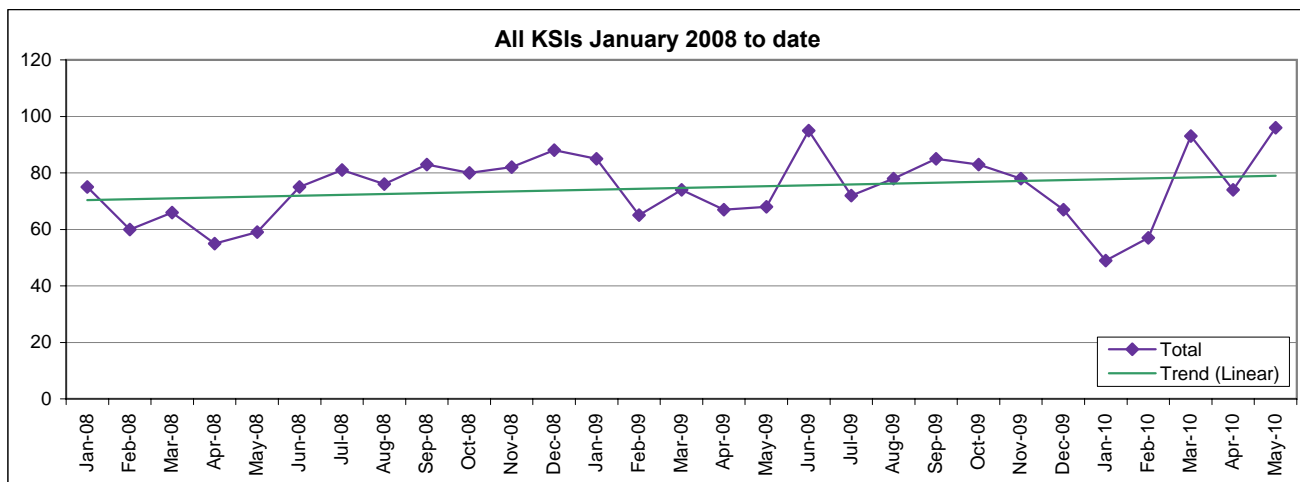
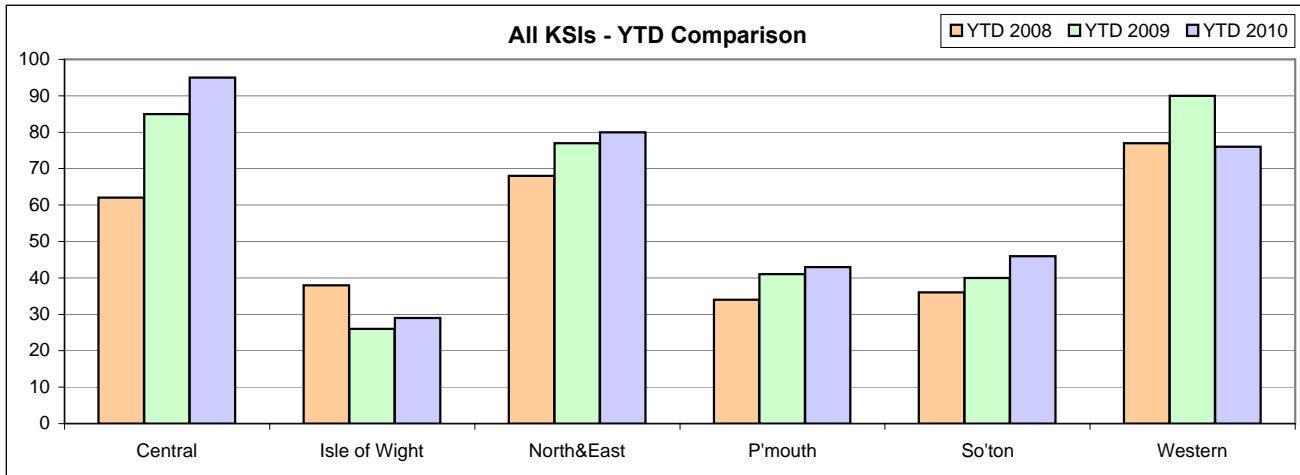
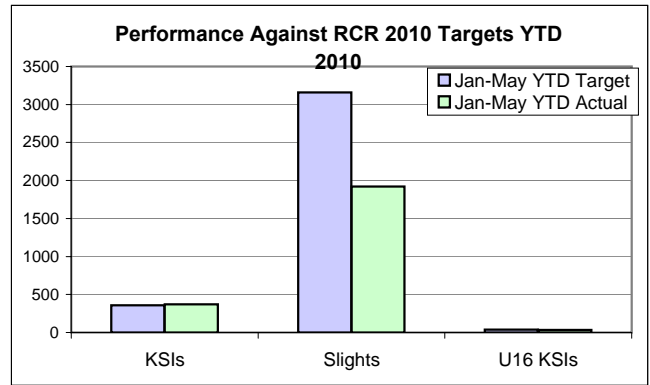
| | Central | Isle of Wight | North & East | Portsmouth | Southampton | Western | Force |
|-------------------|---------|---------------|--------------|------------|-------------|---------|------------|
| up to 1 year | 27 | 5 | 20 | 26 | 18 | 16 | 112 |
| 1yr to 5 years | 33 | 10 | 39 | 36 | 39 | 35 | 192 |
| 5 to 10 years | 11 | 1 | 7 | 3 | 4 | 6 | 32 |
| 10 to 15 years | 7 | 2 | 12 | 3 | 0 | 5 | 29 |
| 15 to 20 years | 3 | 1 | 6 | 0 | 0 | 7 | 17 |
| 20 to 25 years | 1 | 0 | 0 | 0 | 0 | 0 | 1 |
| 25 years and over | 2 | 1 | 1 | 0 | 1 | 1 | 6 |

Exception report for protecting our communities from crime & harm

Road Casualty Reduction (RCR2010)

| Performance Against RCR 2010 Targets | | | |
|--------------------------------------|-------------|-----------------|-----------------|
| May-10 | KSIs | Slight s | U16 KSIs |
| Year Target | 862 | 7584 | 86 |
| Monthly Target | 71.8 | 632.0 | 7.2 |
| Jan-May YTD Target | 359.2 | 3160.0 | 35.8 |
| May Actual | 96 | 392 | 6 |
| Jan-May YTD Actual | 369 | 1921 | 33 |
| YTD Actual against Target | 2.7% | -39.2% | -7.9% |

* KSIs = Killed or Seriously Injured U16 = Under 16



Exception report for protecting our communities from crime & harm

ASB/Casualty Reduction work

June ACPO Drink/Drug Drive Campaign

| | Central | IOW | North&East | Portsmouth | Southampton | Western | Operations | Force |
|---------------------------|---------|--------|------------|------------|-------------|---------|------------|--------------|
| Breath Tests Administered | 234 | 45 | 262 | 83 | 135 | 173 | 1412 | 2344 |
| Positive, Refused | 24 | 8 | 32 | 13 | 18 | 18 | 87 | 200 |
| % Positive, Refused | 10.26% | 17.78% | 12.21% | 15.66% | 13.33% | 10.40% | 6.16% | 8.53% |

Data taken from Drager downloads up to 05/07/2010 09:00

Activity (operations/tasks)

| | Central | IOW | North&East | Portsmouth | Southampton | Western | Strategic Roads | Out of County | Force |
|------------------------|---------|-----|------------|------------|-------------|---------|-----------------|---------------|-----------|
| ASB/Casualty Reduction | 12 | 2 | 9 | 17 | 11 | 5 | 1 | 0 | 57 |
| Drink/Drug Drive | 2 | 0 | 1 | 0 | 1 | 0 | 0 | 0 | 4 |

RESULTS

| | | | | | | | | | |
|------------------|---|---|---|----|----|---|---|---|-----------|
| Arrests | 6 | 1 | 1 | 12 | 1 | | 2 | 0 | 23 |
| Vehicle Seizures | 2 | 3 | 1 | 21 | 24 | 7 | 0 | 0 | 58 |
| Impairment | 2 | 0 | 0 | 0 | 0 | 0 | 1 | 0 | 3 |

ProActive Teams Activity

| | Central | IOW | North&East | Portsmouth | Southampton | Western | Strategic Roads | Out of County | Force |
|------------------------|---------|-----|------------|------------|-------------|---------|-----------------|---------------|-----------|
| Days spent in each OCU | 2 | 0 | 15 | 3 | 8 | 6 | 0 | 2 | 36 |

RESULTS

| | | | | | | | | | |
|------------------|---|---|---|----|----|---|---|---|-----------|
| Arrests | 1 | 0 | 4 | 3 | 6 | 0 | 0 | 0 | 14 |
| Vehicle Seizures | 1 | 0 | 9 | 12 | 20 | 6 | 0 | 2 | 50 |
| Impairment | 0 | 0 | 1 | 0 | 0 | 0 | 0 | 0 | 1 |