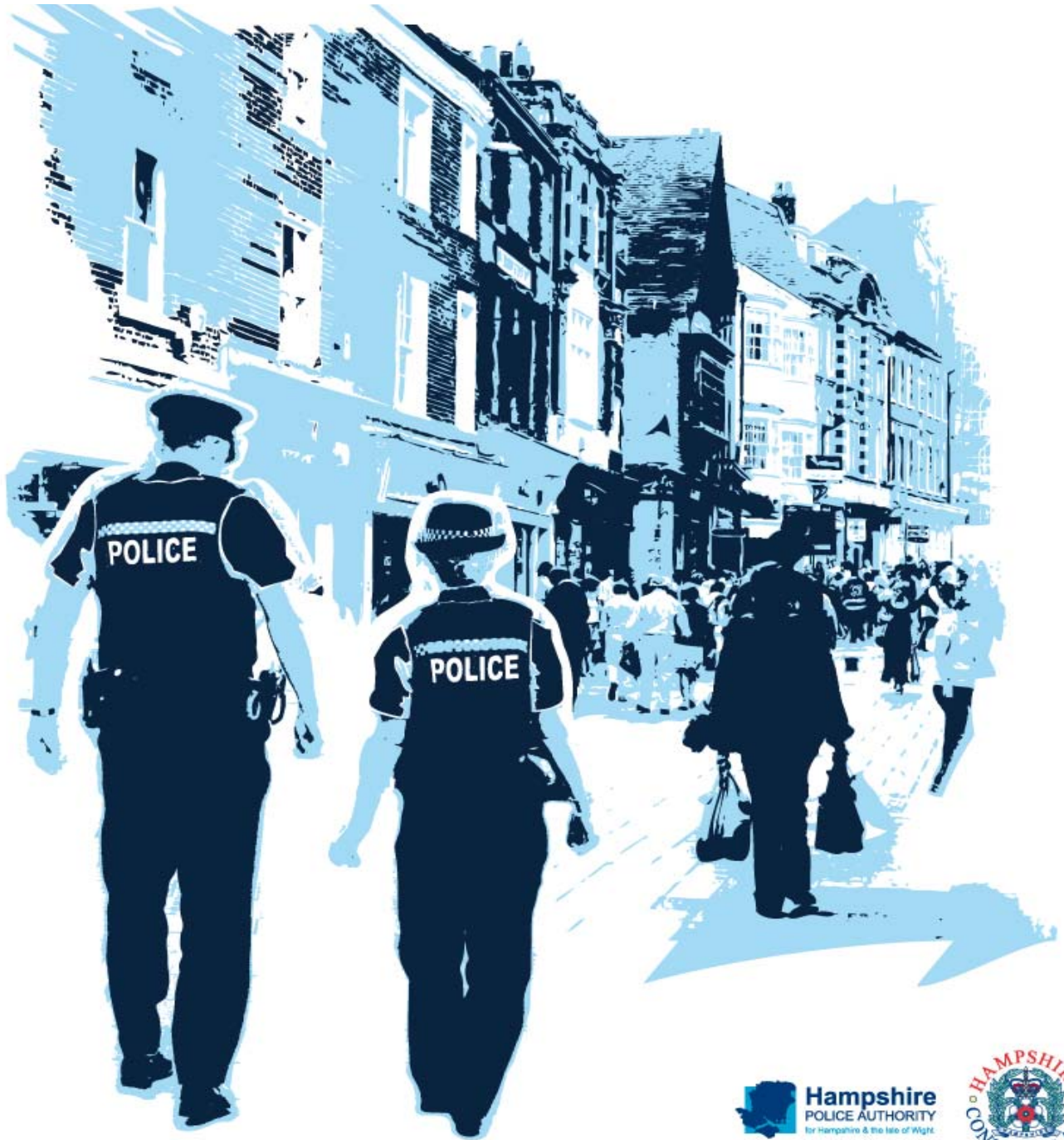


Performance Profile

July 2010



Summary and index

Summary

2010/11 Reporting Year

This document contains a strategic overview of the Constabulary's performance. It has a variety of performance measures within it. The format of the profile has been aligned to the Policing Priorities identified by the Control Strategy. It provides information on our performance against Force targets, some of the APACS Indicators and the Policing Pledge. It also aims to provide supplementary information to assist in understanding reasons behind the performance in these areas. It has been designed as a headline document that will enable our customers, both internally and externally, to easily assess performance information for key domains. This year additional monitoring information within the six domains of the Policing Priorities will be published quarterly - a calendar of publication is located at the bottom of this page. If during a month an issue is identified which needs to be highlighted this will be done through 'exception reporting'.

A matrix can be found at the front of the profile which reflects our year to date performance against our targets.

Performance in key areas is then explored in more depth with an indication of where each measure has originated - for example, APACS Indicator or a Force Control Strategy (FCS) measure.

Where applicable, within the document, MSG (Most Similar Group) data is published along with the crime and detection data. MSGs are calculated by the Home Office based on a number of socio-demographic & geographic variables which are strongly linked to crime/incident levels and the fear of crime. These groups provide a benchmark for comparison of crime and detection rates. Below the applicable crime tables there are three rows relating to MSG data. The first provides the MSG position for the OCU/Force for that crime type. The second displays OCU Actual, this is the number of offences per 1,000 population. The third row shows the MSG Average which is the total number of offences per 1,000 population divided by the number within the MSG. The same three rows are provided in relation to detection data, where data is provided in % figures rather than per 1,000 population.

Please note: iQuanta data is provisional. Within the profile, Hampshire data is published and compared against the MSG average. The other forces within Hampshire's MSG are: Avon and Somerset, Bedfordshire, Essex Hertfordshire, Kent, Sussex and Thames Valley. We are unable to provide figures from iQuanta for these forces, due to the provisional nature of this data.

This document is then taken forward by key stakeholders within the organisation to the Force Performance Review Group, where it is used to highlight areas of good performance and those for development.

Crime OCU contribute to the following areas within this document, either via investigation, forensic support, and/or review of these crimes: homicide, serious violent, sexual and acquisitive crime, class A drug supply, drug seizures, domestic violence/hate crime, FIU form submissions, gun/knife crime (where this results in a major investigation/forensic support).

This is an evolving document and as such, the contents of which may alter over time and any feedback would be welcomed by the Performance Review Team.

Calendar of Quarterly Reporting

April - Catching criminals & managing offenders and Protecting our communities
May - Making the most of our resources and Equipping our team to deliver
June - Providing an excellent service and An active presence in every neighbourhood
July - Catching criminals & managing offenders and Protecting our communities
August - Making the most of our resources and Equipping our team to deliver
September - Providing an excellent service and An active presence in every neighbourhood
October - Catching criminals & managing offenders and Protecting our communities
November - Making the most of our resources and Equipping our team to deliver
December - Providing an excellent service and An active presence in every neighbourhood
January - Catching criminals & managing offenders and Protecting our communities
February - Making the most of our resources and Equipping our team to deliver
March - The year end profile will have all six domain areas included

MSG Colour Key

Force	OCU
1-2	1-4
3-4	5-8
5-6	9-12
7-8	13-15

Index

Page	FCS = Force Control Strategy		
Year to date performance matrix			
4			including notes on matrices terminology
Providing an excellent service			
5	National public confidence measure	APACS 2.2	FCS iQuanta
5	Local confidence survey data		FCS Consultation & Research Team
6	Overall satisfaction	APACS 1.1	FCS Consultation & Research Team
6	Being kept informed		FCS Consultation & Research Team
6	Comparative satisfaction of minority ethnic groups	APACS 1.3	FCS Consultation & Research Team
6	Satisfaction of victims of racist incidents	APACS 1.2	FCS Consultation & Research Team
6	MSG user satisfaction data		FCS Consultation & Research Team
An active presence in every neighbourhood			
7	Rowdy and nuisance behaviour		FCS Business Objects
8	Criminal damage		FCS Business Objects
Catching criminals and managing offenders			
9	Serious acquisitive crime	APACS 5.2	FCS Business Objects
10	Breakdown: Robbery, dwelling burglary, vehicle crime		FCS Business Objects
10	Breakdown: Theft of a motor vehicle, theft from a motor vehicle		FCS Business Objects
10	Organised crime groups		FCS 7 OCU Performance Team
Protecting our communities			
11	Violence against the person with injury		FCS Business Objects
12	Serious violent crime	APACS 5.1	FCS Business Objects
13	Assault with less serious injury	APACS 5.3	FCS Business Objects
14	Reduction in dwelling burglary		FCS Business Objects
Making the most of our resources			
15	BME recruitment		FCS Personnel
15	Minority ethnic officer recruitment	APACS 3.1	FCS Personnel
15	Minority ethnic police staff recruitment		FCS Personnel
15	Female officer representation	APACS 3.2	FCS Personnel
Equipping our team to deliver			
15	Staff confidence in the organisation		FCS Consultation & Research Team
Monitoring information for Catching criminals and managing offenders			
16	Serious sexual offences - detections		FCS Business Objects
16	Class A drugs sanction detections		FCS Business Objects
16	Drug seizures information		FCS Business Objects
16	Bail rates		FCS CJD Performance
17	Detections by disposal type - volume and proportion		FCS Business Objects
17	Forensic results for vehicle crime		FCS Scientific Services
17	Outstanding suspects		FCS Business Objects
Monitoring information for Protecting our communities			
18	All crime		FCS Business Objects
19	Prolific and other priority offenders (PPOs) convictions		FCS CJD Performance
19	FIU1 submissions		FCS 7 OCU and Business Objects
20	Actual cash seizure value		FCS 7 OCU Crime
20	Gun crime	APACS 5.5	FCS Business Objects
20	Knife crime	APACS 5.6	FCS Business Objects
20	Murder offences	APACS 5.4	FCS Business Objects
21	Missing persons		FCS 7 OCU Crime
22	Casualty reduction		FCS 8 OCU Performance
Exception report for Making the most of our resources			
23	Overtime data and bank holiday overtime data		FCS Finance

Year to date performance targets matrix

	Target	Actual	Central	Isle of Wight	North & East	Portsmouth	Southampton	Western
Providing an excellent service								
Confidence in local police	55.3%	52.5%	This is a Force measure					
Local confidence measure (latest quarter)	87.3%	81.0%	84.0%	81.0%	79.0%	78.0%	80.0%	83.0%
Overall satisfaction (data for rolling 12 months)	68.0%	69.0%	70.0%	69.0%	70.0%	67.0%	66.0%	72.0%
An active presence in every neighbourhood								
Rowdy & nuisance behaviour (inc vehicle nuisance)	<23179	23910	4261	1682	4369	4001	5594	4003
	OCU specific targets		4592	1521	4282	3619	5184	3981
Reduce criminal damage	<9164	8981	1878	812	1663	1225	1827	1576
	OCU specific targets		1986	676	1792	1183	1881	1647
Catching criminals & managing offenders								
Serious acquisitive crime SD	>15%	11.3%	12.1%	16.9%	10.8%	7.8%	11.7%	12.3%
Organised crime group (OCG) - disruptions	>40%	150%	Owned by Crime OCU					
Protecting our communities								
Reduce violence against the person with injury	<4790	5053	1024	441	837	910	1119	722
	OCU specific targets		973	327	790	856	1115	729
Reduction in dwelling burglary	<1785	1670	289	89	284	364	410	234
	OCU specific targets		351	85	375	328	339	306
Making the most of our resources								
BME recruitment	>5%	5.1%	This is a Force measure					
Equipping our staff to deliver								
Staff confidence in the organisation	To be determined from initial survey		No data available for July profile					
Force Total - targets achieved		5	4	2	3	0	1	4

Notes to be read in conjunction with matrices

All citizen focus data
SD
BME
OCU specific targets

Based on "completely or very satisfied"
Sanction detections
Black and minority ethnic
OCU specific targets are rounded to 0 decimal places; the actual figure may therefore seem the same but appear amber due to this rounding

Force target areas for providing an excellent service

	Target	Actual	Central	Isle of Wight	North & East	Portsmouth	Southampton	Western
Confidence in local police (latest data)	55.3%	52.5%	This is a Force measure					
Local Confidence Measure (latest data)	87.3%	81.0%	84.0%	81.0%	79.0%	78.0%	80.0%	83.0%
Overall satisfaction (rolling 12 months)	68.0%	69.0%	70.0%	69.0%	70.0%	67.0%	66.0%	72.0%

National Public Confidence Measure

APACS 2.2 Force Target

This data is based on 'The police and local council are dealing with the anti-social behaviour and crime issues that matter in this area'

The Home Office has set a target to achieve a 12% improvement by 2012 against the baseline of 47.3%

This year's required improvement is 4%

Mar-10

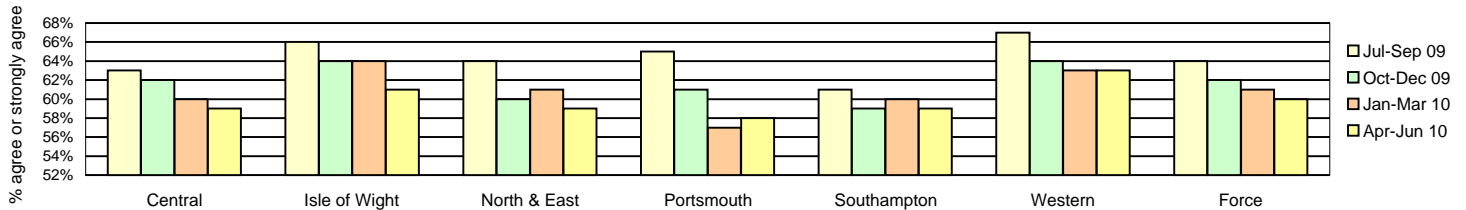
Hampshire	52.5%
MSG Position	3 of 8
MSG average	51.2%

Local Confidence Survey Data

Figures relate to the percentage of respondents who agree or strongly agree with the question. Hampshire's local surveys have a confidence level of +/-4%. This means that changes of less than 4% may not reflect a real change in performance.

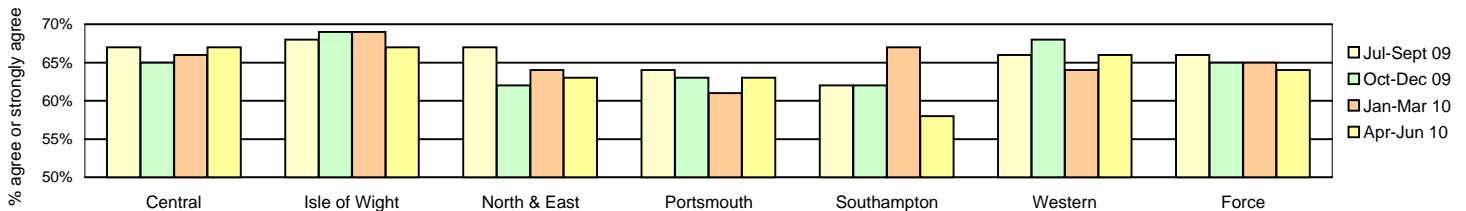
The police and local council are dealing with the anti-social behaviour and crime issues that matter in this area

	Central	Isle of Wight	North & East	Portsmouth	Southampton	Western	Force	No. Surveys
July - September 2009	63%	66%	64%	65%	61%	67%	64%	8128
October - December 2009	62%	64%	60%	61%	59%	64%	62%	3822
January - March 2010	60%	64%	61%	57%	60%	63%	61%	3708
April - June 2010	59%	61%	59%	58%	59%	63%	60%	3612



The police are dealing with the things that matter locally

	Central	Isle of Wight	North & East	Portsmouth	Southampton	Western	Force	No. Surveys
July - September 2009	67%	68%	67%	64%	62%	66%	66%	8128
October - December 2009	65%	69%	62%	63%	62%	68%	65%	3822
January - March 2010	66%	69%	64%	61%	67%	64%	65%	3708
April - June 2010	67%	67%	63%	63%	58%	66%	64%	3612



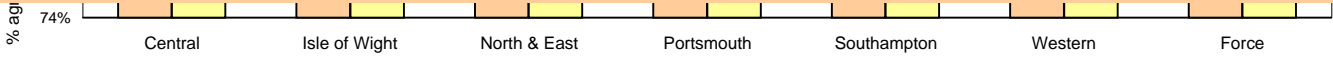
Taking everything into account, I have confidence in the Police in this area

Force Target

Target: 87.3%	Central	Isle of Wight	North & East	Portsmouth	Southampton	Western	Force	No. Surveys
January - March 2010	83%	83%	80%	79%	84%	82%	82%	3708
April - June 2010	84%	81%	79%	78%	80%	83%	81%	3612



Force target areas for providing an excellent service



Force target areas for providing an excellent service

Overall satisfaction (user satisfaction survey results)

APACS 1.1 Force Target

Rolling 12 months data relates to: Aug 09 - Jul 10; rolling 3 months data relates to May 10 - Jul 10

Overall satisfaction includes burglary, vehicle crime, violent crime and minor injury RTCs

Target 68%	Central	Isle of Wight	North & East	Portsmouth	Southampton	Western	Force	No. Surveys
Rolling 12 months	70%	69%	70%	67%	66%	72%	69%	8109
Rolling 3 months	71%	70%	69%	70%	67%	68%	69%	1895

Being kept informed (user satisfaction survey results)

Rolling 12 months data relates to: Aug 09 - Jul 10; rolling 3 months data relates to May 10 - Jul 10

Being kept informed includes burglary, vehicle crime, violent crime and minor injury RTCs

	Central	Isle of Wight	North & East	Portsmouth	Southampton	Western	Force	No. Surveys
Rolling 12 months	61%	62%	59%	57%	57%	63%	60%	7870
Rolling 3 months	62%	60%	63%	62%	60%	59%	61%	1837

Comparative satisfaction of minority ethnic groups

APACS 1.3

Data relates to interviews which took place Aug 09 - Jul 10

These figures are for overall satisfaction for burglary, vehicle crime, violent crime, minor injury RTCs.

	Completely and very satisfied	Completely, very and fairly satisfied	No. Surveys
White	69.7%	85.0%	8355
Minority Ethnic	58.0%	81.1%	371
Satisfaction Gap	11.7%	3.9%	

Satisfaction of victims of racist incidents

APACS 1.2

These figures relate to interviews which took place Jul 09 - Jun 10; these will be updated quarterly

Racist incident overall satisfaction = % completely or very satisfied

	Central	Isle of Wight	North & East	Portsmouth	Southampton	Western	Force
Percentage	62%	88%	59%	63%	58%	63%	62%
Number of surveys	34	8	29	54	64	24	213

MSG information for user satisfaction

iQuanta data for MSG for the 12 months ending March 2010 (iQuanta calculate satisfaction % based on those responding that they are completely, very or fairly satisfied)

	Previous MSG position	Current MSG position	Change		Previous MSG position	Current MSG position	Change
<u>Vehicle crime</u>				<u>Burglary</u>			
Ease of contact	4/8	4/8	↔	Ease of contact	4/8	4/8	↔
Actions taken	4/8	4/8	↔	Actions taken	6/8	6/8	↔
Follow up	4/8	4/8	↔	Follow up	1/8	1/8	↔
Treatment	5/8	5/8	↔	Treatment	7/8	5/8	↑
Whole Experience	4/8	4/8	↔	Whole Experience	3/8	4/8	↓
<u>Violent crime</u>				<u>RTC (minor injury)</u>			
Ease of contact	4/8	5/8	↓	Ease of contact	1/8	1/8	↔
Actions taken	3/8	4/8	↓	Actions taken	2/8	2/8	↔
Follow up	5/8	6/8	↓	Follow up	2/8	1/8	↑
Treatment	3/8	5/8	↓	Treatment	2/8	3/8	↓
Whole Experience	4/8	4/8	↔	Whole Experience	2/8	3/8	↓
<u>All users (excluding racist incidents)</u>							
Ease of contact	1/8	1/8	↔				
Actions taken	4/8	4/8	↔				
Follow up	2/8	1/8	↑				
Treatment	4/8	5/8	↓				
Whole Experience	4/8	3/8	↑				

Force target areas for an active presence in every neighbourhood

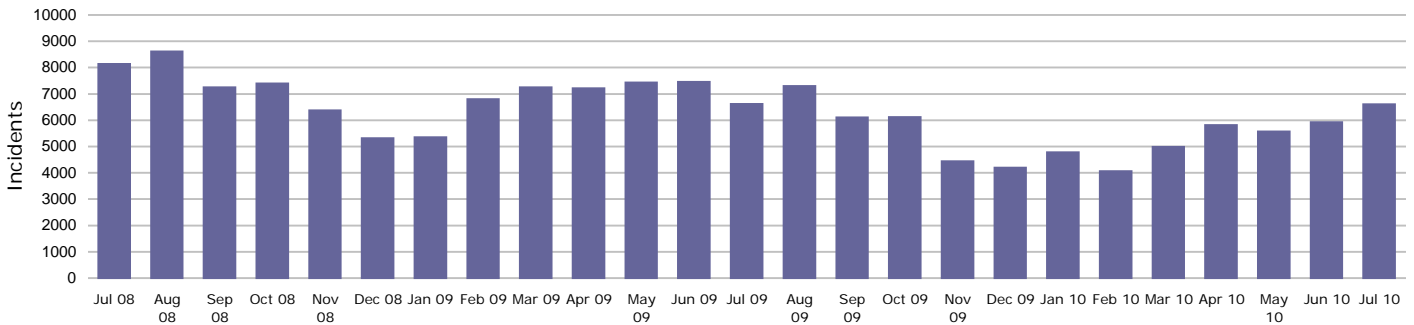
	Target	Actual	Central	Isle of Wight	North & East	Portsmouth	Southampton	Western
Rowdy & nuisance behaviour (inc Vehicle Nuisance)	23179	23910	4261	1682	4369	4001	5594	4003
	OCU specific targets		4592	1521	4282	3619	5184	3981
Reduce criminal damage	9164	8981	1878	812	1663	1225	1827	1576
	OCU specific targets		1986	676	1792	1183	1881	1647

Rowdy & nuisance behaviour (including vehicle)

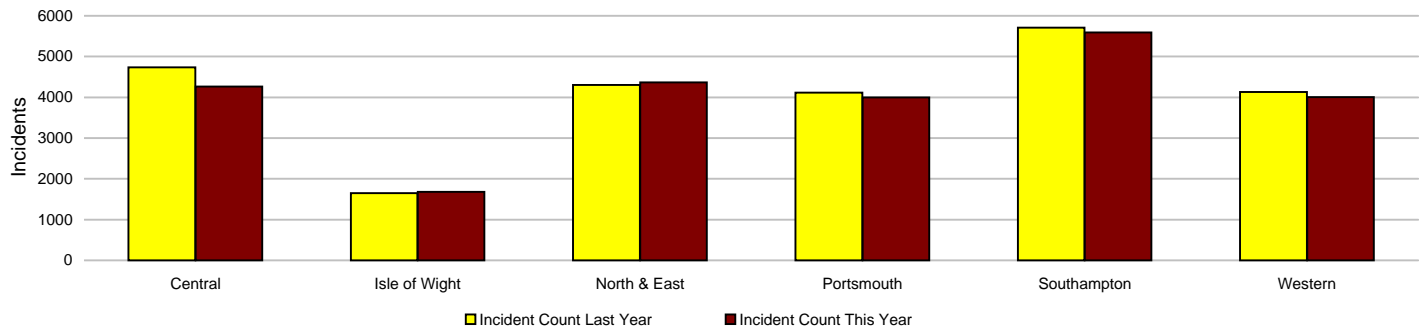
Force Target

In 2009-2010 Rowdy and Nuisance included Inappropriate use of Fireworks, Rowdy & Inconsiderate, Substance Misuse and Street Drinking, with Vehicle Related Nuisance being a separate entity for monitoring purposes however the decision this year has been to bring all key nuisance elements into one section. This data is sourced from RMS and does not reflect the complete NSIR return for Hampshire.

This target is based on a subset of the anti-social behaviour categories, it does not cover all aspects of anti-social behaviour.



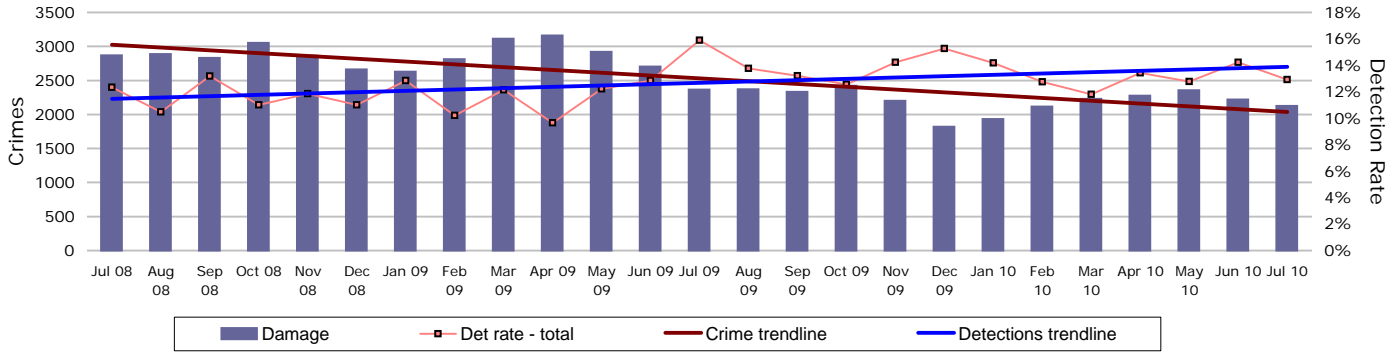
Incidents	Central	Isle of Wight	North & East	Portsmouth	Southampton	Western	Force
YTD Incidents	4261	1682	4369	4001	5594	4003	23910
YTD Target	4592	1521	4282	3619	5184	3981	23179
YTD 09/10 Incidents	4732	1649	4302	4119	5707	4130	24639
This month	1152	557	1224	1126	1501	1050	6610
% change from 09/10	-9.95%	2.00%	1.56%	-2.86%	-1.98%	-3.08%	-2.96%



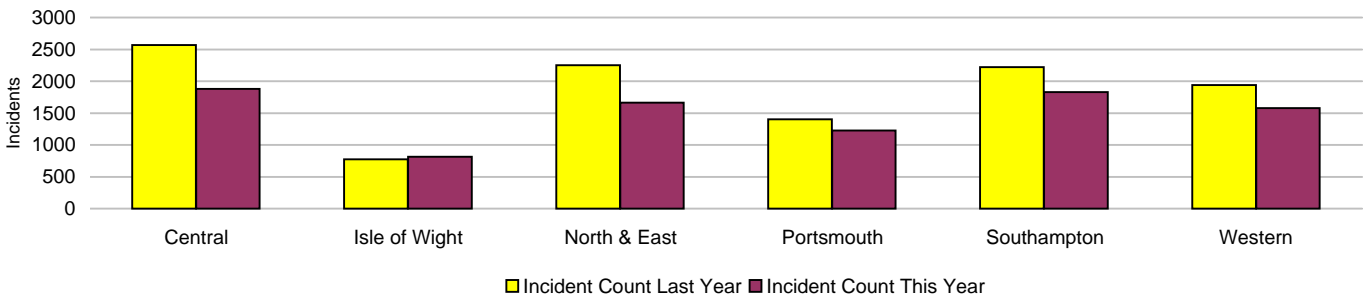
Force target areas for an active presence in every neighbourhood

Criminal damage

Force Target

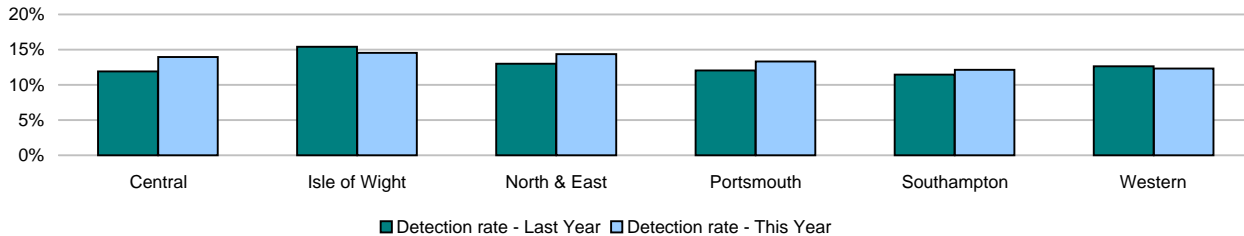


Crimes	Central	Isle of Wight	North & East	Portsmouth	Southampton	Western	Force
YTD Crimes	1878	812	1663	1225	1827	1576	8981
YTD Target	1986	676	1792	1183	1881	1647	9164
YTD 09/10 Crimes	2568	773	2249	1401	2220	1940	11151
This month	459	199	386	281	433	369	2127
% change from 09/10	-26.87%	5.05%	-26.06%	-12.56%	-17.70%	-18.76%	-19.46%
MSG position	12 of 15	15 of 15	9 of 15	13 of 15	15 of 15	5 of 15	7 of 8
MSG actual	3.248	4.374	2.956	4.745	5.98	2.949	3.704
MSG average	3	3.482	2.94	4.003	4.284	3.019	3.404



Detections	Central	Isle of Wight	North & East	Portsmouth	Southampton	Western	Force
YTD Detection Rate	13.95%	14.53%	14.37%	13.31%	12.15%	12.31%	13.34%
This month	15.03%	13.07%	15.54%	14.59%	8.55%	11.38%	12.93%
YTD 09/10 Detections	11.92%	15.39%	12.98%	12.06%	11.44%	12.63%	12.42%
MSG position	7 of 15	6 of 15	10 of 15	2 of 15	6 of 15	10 of 15	6 of 8
MSG actual	13.42%	15.96%	13.36%	14.44%	13.43%	12.60%	13.60%
MSG average	13.33%	14.49%	14.08%	12.20%	13.21%	13.30%	14.19%

Note: Detections refer to Sanction Detections ONLY



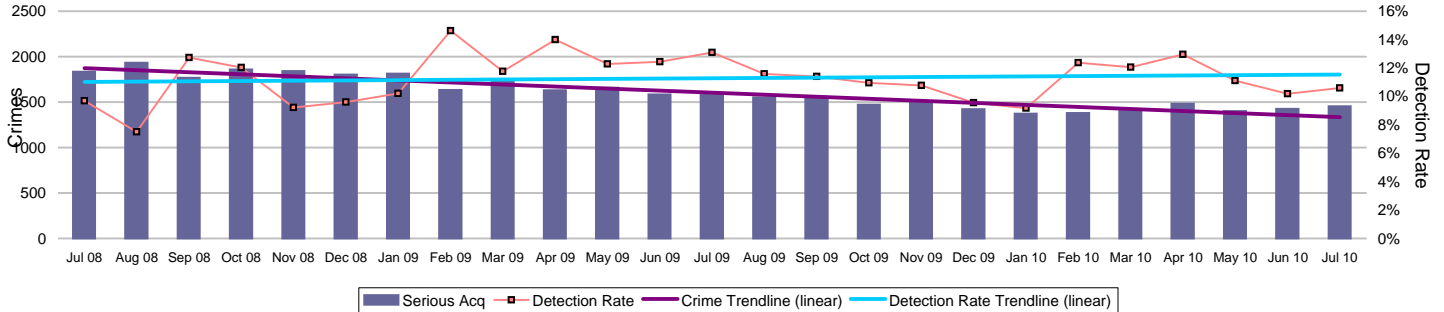
Force target areas for catching criminals and managing offenders

	Target	Actual	Central	Isle of Wight	North & East	Portsmouth	Southampton	Western
Serious acquisitive detection rate	15%	11.3%	12.1%	16.9%	10.8%	7.8%	11.7%	12.3%
OCG disruptions	40%	150%	Owned by Crime OCU					

Serious acquisitive crime

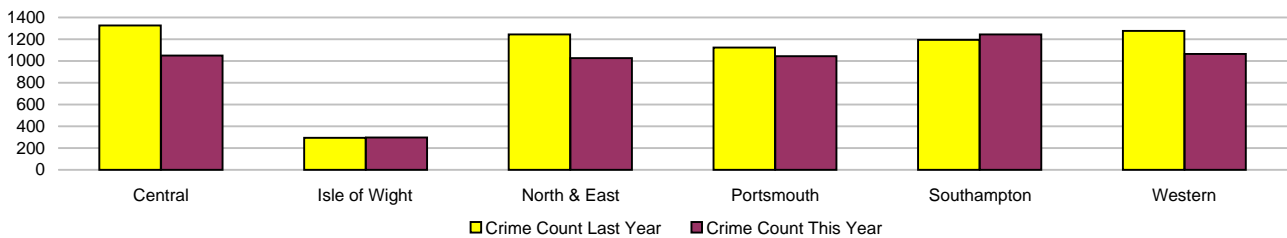
APACS 5.2 Force Target

Serious acquisitive crime consists of crimsec codes 28, 29, 34A, 34B, 37/2, 45 and 48



Crimes

	Central	Isle of Wight	North & East	Portsmouth	Southampton	Western	Force
YTD Crimes	1050	296	1026	1045	1243	1065	5725
YTD 09/10 Crimes	1326	293	1243	1124	1193	1277	6456
This month	256	68	239	258	351	281	1453
% change from 09/10	-20.81%	1.02%	-17.46%	-7.03%	4.19%	-16.60%	-11.32%
MSG actual	4 of 15	4 of 15	4 of 15	5 of 15	6 of 15	8 of 15	2 of 8
MSG average	1.816	1.62	1.819	3.958	3.861	1.95	2.319
MSG average	2.337	2.147	2.306	4.417	4.236	2.118	2.907



Detections

	Central	Isle of Wight	North & East	Portsmouth	Southampton	Western	Force
YTD Detection Rate	12.10%	16.89%	10.82%	7.75%	11.75%	12.30%	11.28%
This month	12.11%	17.65%	7.11%	7.75%	5.41%	19.57%	10.60%
YTD 09/10 Detections	10.71%	16.38%	13.76%	16.81%	10.81%	12.29%	12.95%
MSG position	5 of 15	11 of 15	13 of 15	10 of 15	8 of 15	12 of 15	5 of 8
MSG actual	27.66%	13.66%	9.86%	11.24%	13.87%	10.22%	11.28%
MSG average	28.53%	15.56%	13.37%	11.97%	14.09%	13.04%	12.96%

Note: Detections refer to Sanction Detections ONLY



Force target areas for catching criminals and managing offenders

Serious acquisitive crime breakdown

Robbery

Year to date	Central	Isle of Wight	North & East	Portsmouth	Southampton	Western	Force
Crimes	32	11	70	90	139	31	373
09/10 crimes	31	11	49	88	112	51	342
% change from 09/10	3.23%	0.00%	42.86%	2.27%	24.11%	-39.22%	9.06%
MSG position	8 of 15	3 of 15	11 of 15	6 of 15	10 of 15	6 of 15	3 of 8
Detection rate	12.50%	18.18%	27.14%	16.67%	29.50%	45.16%	25.47%
MSG position	4 of 15	6 of 15	12 of 15	10 of 15	10 of 15	8 of 15	4 of 8
July 2010							
Crimes	6	4	16	23	46	10	105
Detection rate	0.00%	25.00%	31.25%	30.43%	8.70%	70.00%	22.86%

Dwelling burglary

Year to date	Central	Isle of Wight	North & East	Portsmouth	Southampton	Western	Force
Crimes	289	89	284	364	410	234	1670
09/10 crimes	363	90	386	303	346	298	1786
% change from 09/10	-20.39%	-1.11%	-26.42%	20.13%	18.50%	-21.48%	-6.49%
MSG position	4 of 15	4 of 15	4 of 15	8 of 15	6 of 15	2 of 15	2 of 8
Detection rate	21.45%	14.61%	14.44%	12.91%	16.10%	25.21%	17.25%
MSG position	10 of 15	14 of 15	14 of 15	8 of 15	6 of 15	5 of 15	7 of 8
July 2010							
Crimes	61	26	57	77	117	58	396
Detection rate	29.51%	7.69%	7.02%	11.69%	8.55%	18.97%	13.64%

Vehicle crime

Year to date	Central	Isle of Wight	North & East	Portsmouth	Southampton	Western	Force
Crimes	729	196	672	591	694	800	3682
09/10 crimes	932	192	808	733	735	928	4328
% change from 09/10	-21.78%	2.08%	-16.83%	-19.37%	-5.58%	-13.79%	-14.93%
MSG position	6 of 15	5 of 15	2 of 15	4 of 15	7 of 15	10 of 15	1 of 8
Detection rate	8.37%	17.86%	7.59%	3.21%	5.62%	7.25%	7.14%
MSG position	11 of 15	8 of 15	10 of 15	12 of 15	9 of 15	14 of 15	7 of 8
July 2010							
Crimes	189	38	166	158	188	213	952
Detection rate	6.88%	23.68%	4.82%	2.53%	2.66%	17.37%	7.98%
Detection numbers	13	9	8	4	5	37	76

Theft of a motor vehicle

Year to date	Central	Isle of Wight	North & East	Portsmouth	Southampton	Western	Force
Crimes	142	53	158	97	165	144	759
MSG position	2 of 15	4 of 15	7 of 15	1 of 15	7 of 15	3 of 15	1 of 8
Detection rate	19.01%	33.96%	15.82%	8.25%	10.30%	16.67%	15.68%
MSG position	9 of 15	3 of 15	11 of 15	7 of 15	10 of 15	5 of 15	4 of 8
July 2010							
Crimes	37	9	27	24	45	48	190
Detection rate	27.03%	66.67%	18.52%	4.17%	8.89%	14.58%	17.37%
Detection numbers	10	6	5	1	4	7	33

Theft from a motor vehicle

Year to date	Central	Isle of Wight	North & East	Portsmouth	Southampton	Western	Force
Crimes	587	143	514	494	529	656	2923
MSG position	6 of 15	6 of 15	2 of 15	9 of 15	6 of 15	12 of 15	2 of 8
Detection rate	5.79%	11.89%	5.06%	2.23%	4.16%	5.18%	4.93%
MSG position	10 of 15	13 of 15	12 of 15	12 of 15	8 of 15	15 of 15	7 of 8
July 2010							
Crimes	152	29	139	134	143	165	762
Detection rate	1.97%	10.34%	2.16%	2.24%	0.70%	18.18%	5.64%
Detection numbers	3	3	3	3	1	30	43

Robbery, dwelling burglary and vehicle crime are the component parts of serious acquisitive crime. These individual crime types do not have targets.

Number of Organised Crime Groups (OCGs) disrupted

Force Target

The Force target for 2010/11 is to dismantle or disrupt at least 40% of identified organised crime groups as a result of police or multi agency activity.

YTD July 2010

	2009/2010	2010/2011
Number of OCGs identified and mapped	12	2
Number of OCGs disrupted or partially disrupted through Crime OCU activity	8	3

Force target areas for catching criminals and managing offenders

Number of OCGs subject to tactical activity	51	45
---	----	----

Force target areas for protecting our communities

	Target	Actual	Central	Isle of Wight	North & East	Portsmouth	Southampton	Western
Reduction of VAP with injury	4790	5053	1024	441	837	910	1119	722
	OCU specific targets		973	327	790	856	1115	729
Reduction in dwelling burglary	1785	1670	289	89	284	364	410	234
	OCU specific targets		351	85	375	328	339	306

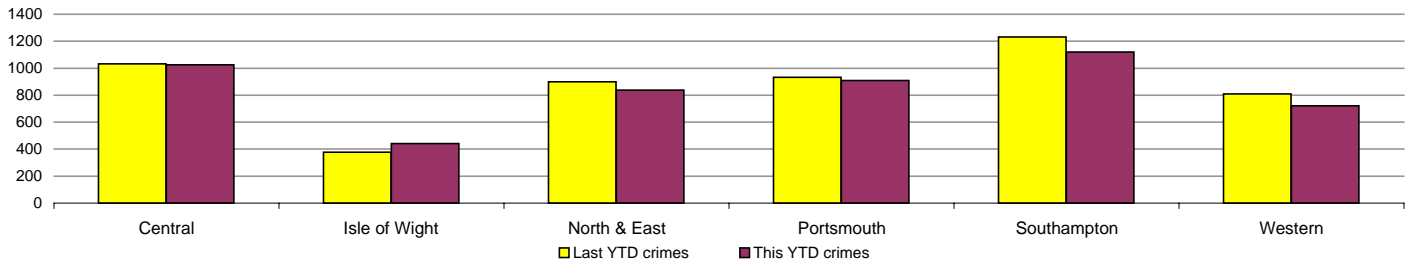
Violence against the person (VAP) with injury

VAP with injury crime codes 1, 2, 4.1-4.4, 4.6-4.10, 5A, 5B, 5C, 8F, 8G, 8H, 8J, 8K and 37.1

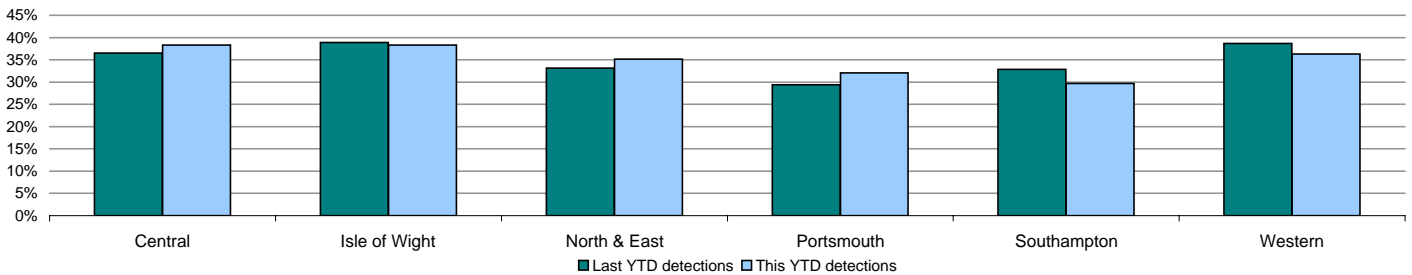
Force Target



Crimes	Central	Isle of Wight	North & East	Portsmouth	Southampton	Western	Force
YTD Crimes	1024	441	837	910	1119	722	5053
YTD Target	973	327	790	856	1115	729	4790
YTD 09/10 Crimes	1033	378	900	933	1231	810	5285
This month	259	120	193	215	300	188	1275
% change from 09/10	-0.87%	16.67%	-7.00%	-2.47%	-9.10%	-10.86%	-4.39%
MSG position	13 of 15	14 of 15	11 of 15	14 of 15	14 of 15	6 of 15	8 of 8
MSG actual	1.73	2.297	1.48	3.486	3.507	1.302	2.033
MSG average	1.394	1.779	1.287	2.311	2.508	1.339	1.601



Detections	Central	Isle of Wight	North & East	Portsmouth	Southampton	Western	Force
YTD Detection Rate	38.28%	38.32%	35.13%	32.09%	29.67%	36.29%	34.45%
This month	35.91%	39.17%	35.75%	36.74%	33.67%	38.30%	36.16%
YTD 09/10 Detections	36.50%	38.89%	33.11%	29.37%	32.82%	38.64%	34.30%
MSG position	13 of 15	8 of 15	12 of 15	10 of 15	11 of 15	8 of 15	6 of 8
MSG actual	37.86%	43.79%	38.01%	34.98%	34.27%	41.67%	37.51%
MSG average	40.79%	43.74%	42.48%	37.24%	38.30%	40.71%	41.69%

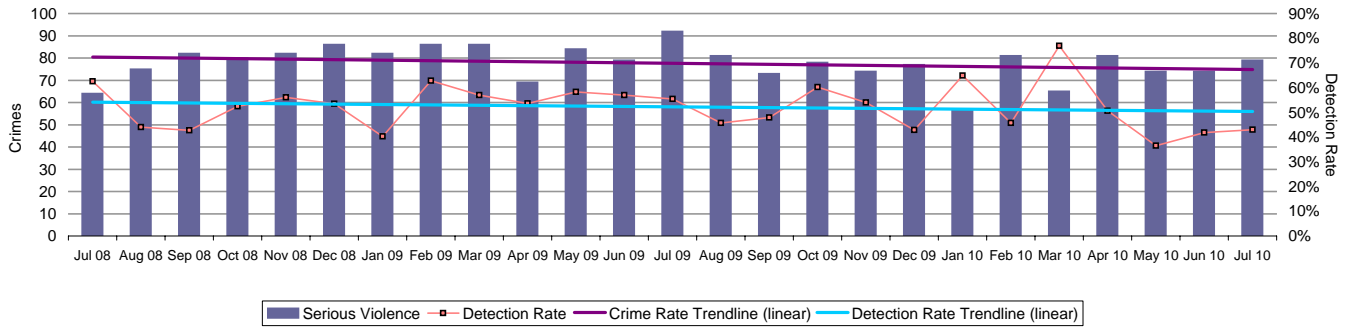


Force target areas for protecting our communities

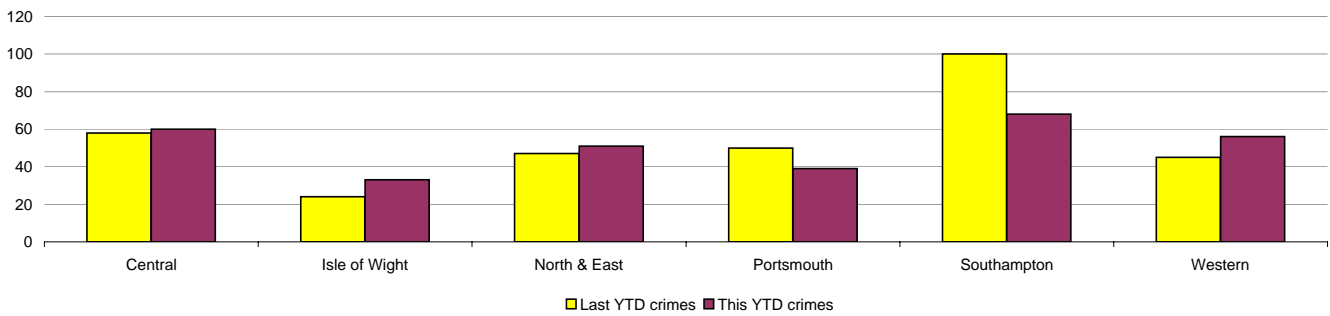
Serious violent crime

APACS 5.1

Serious violent crime consists of crimsec codes 1, 2, 4.1-4.4, 4.6, 4.8, 5A, 5B, 5C, 8F, 8H and 37.1

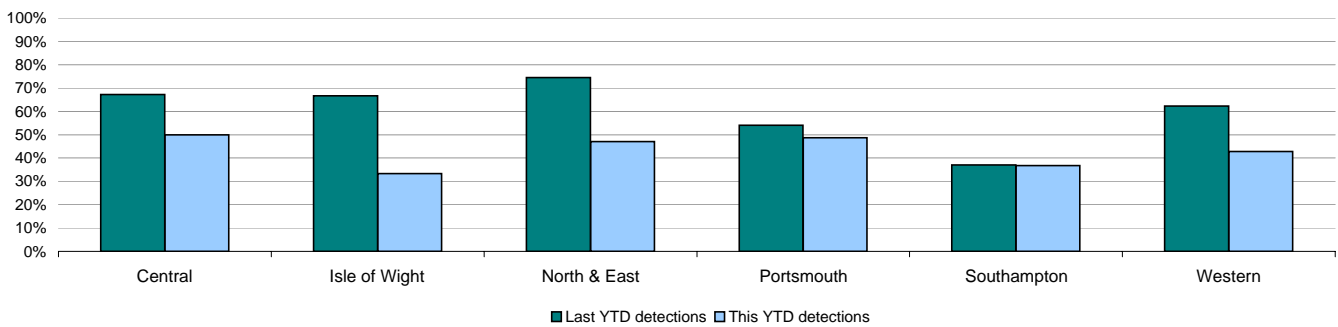


Crimes	Central	Isle of Wight	North & East	Portsmouth	Southampton	Western	Force
YTD Crimes	60	33	51	39	68	56	307
YTD 09/10 Crimes	58	24	47	50	100	45	324
This month	16	13	12	4	19	15	79
% change from 09/10	3.45%	37.50%	8.51%	-22.00%	-32.00%	24.44%	-5.25%
MSG position	11 of 15	11 of 15	8 of 15	4 of 15	6 of 15	13 of 15	6 of 8
MSG actual	0.100	0.014	0.090	0.176	0.218	0.100	0.123
MSG average	0.098	0.127	0.086	0.251	0.262	0.083	0.122



Detections	Central	Isle of Wight	North & East	Portsmouth	Southampton	Western	Force
YTD Detection Rate	50.00%	33.33%	47.06%	48.72%	36.76%	42.86%	43.32%
This month	37.50%	46.15%	50.00%	25.00%	31.58%	60.00%	43.04%
YTD 09/10 Detections	67.24%	66.67%	74.47%	54.00%	37.00%	62.22%	56.17%
MSG position	5 of 15	14 of 15	13 of 15	8 of 15	5 of 15	13 of 15	6 of 8
MSG actual	60.76%	38.67%	50.61%	47.40%	50.24%	52.41%	51.05%
MSG average	58.09%	52.98%	57.67%	45.35%	47.14%	60.66%	49.11%

Note: Detections refer to Sanction Detections ONLY

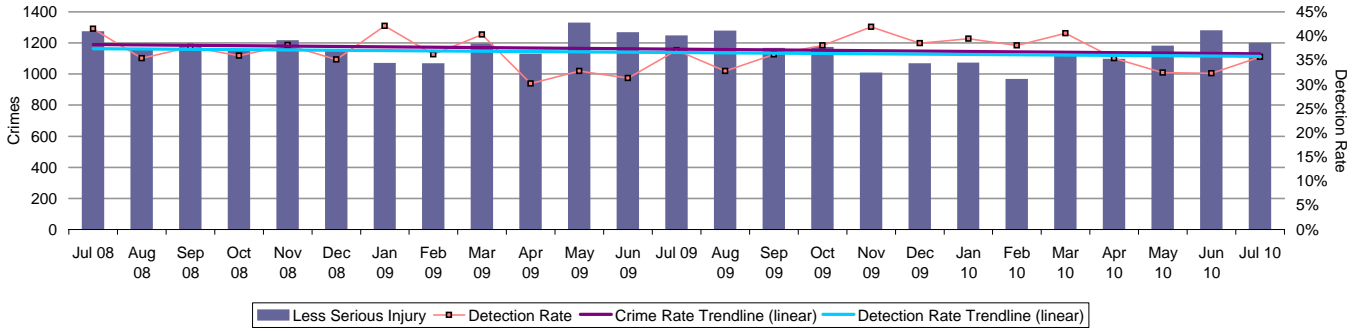


Force target areas for protecting our communities

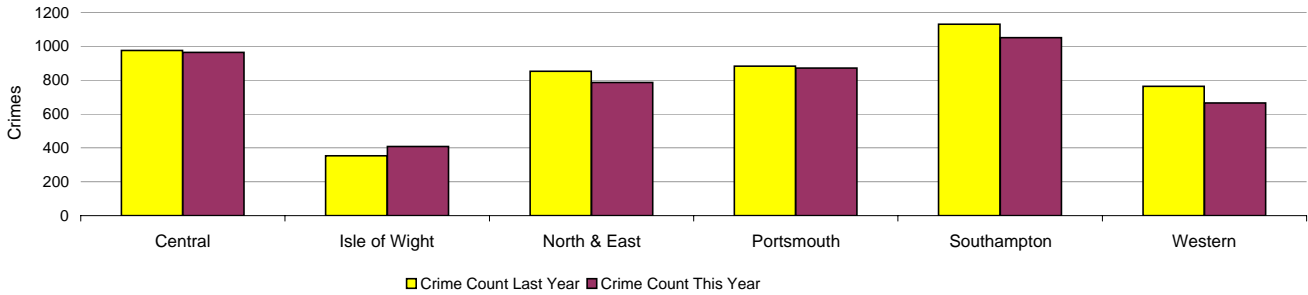
Assault with less serious injury

APACS 5.3

Assault with less serious injury consists of crimsec codes 8G and 8J

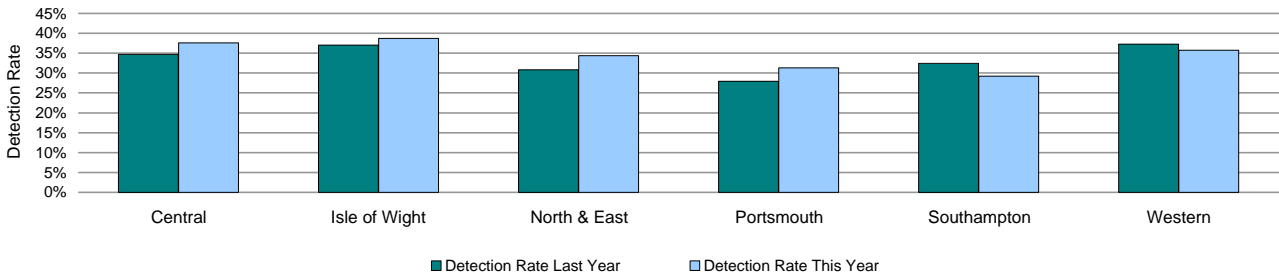


Crimes	Central	Isle of Wight	North & East	Portsmouth	Southampton	Western	Force
YTD Crimes	963	408	786	871	1051	666	4745
YTD 09/10 Crimes	975	354	853	883	1130	764	4959
This month	243	107	181	211	281	173	1196
% change from 09/10	-1.23%	15.25%	-7.85%	-1.36%	-6.99%	-12.83%	-4.32%
MSG position	13 of 15	14 of 15	11 of 15	15 of 15	14 of 15	5 of 15	8 of 8
MSG actual	1.628	2.162	1.391	3.311	3.289	1.202	1.909
MSG average	1.294	1.652	1.201	2.059	2.247	1.256	1.478



Detections	Central	Isle of Wight	North & East	Portsmouth	Southampton	Western	Force
YTD Detection Rate	37.59%	38.73%	34.35%	31.34%	29.21%	35.74%	33.89%
This month	35.80%	38.32%	34.81%	36.97%	33.81%	36.42%	35.70%
YTD 09/10 Detections	34.67%	37.01%	30.83%	27.97%	32.48%	37.30%	32.89%
MSG position	13 of 15	7 of 15	12 of 15	10 of 15	11 of 15	7 of 15	6 of 8
MSG actual	36.60%	44.40%	37.06%	34.26%	33.21%	40.92%	36.63%
MSG average	39.68%	43.05%	41.63%	36.37%	37.40%	39.50%	41.23%

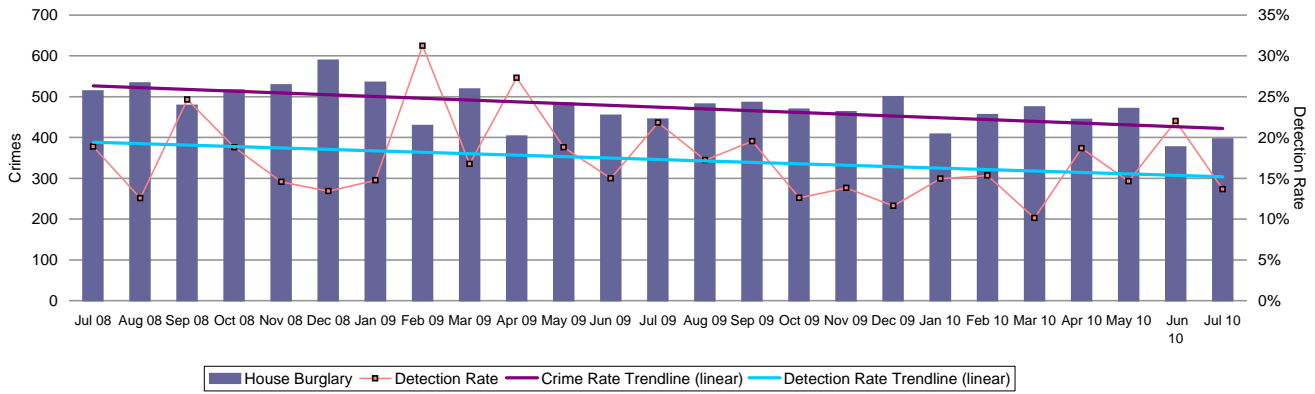
Note: Detections refer to Sanction Detections ONLY



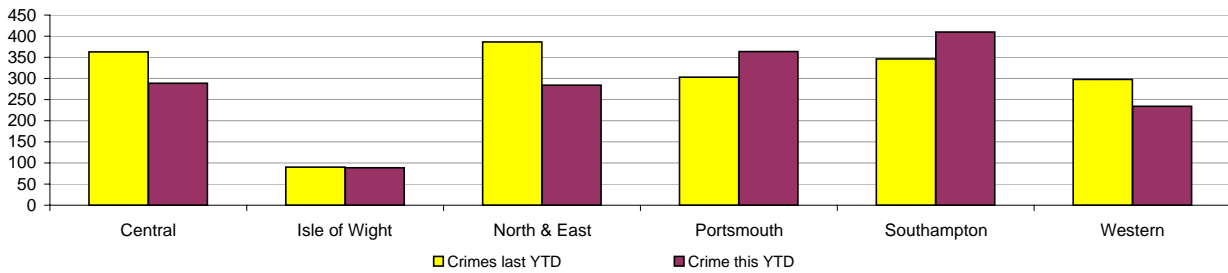
Force target areas for protecting our communities

Reduction in Dwelling Burglary

Force Target

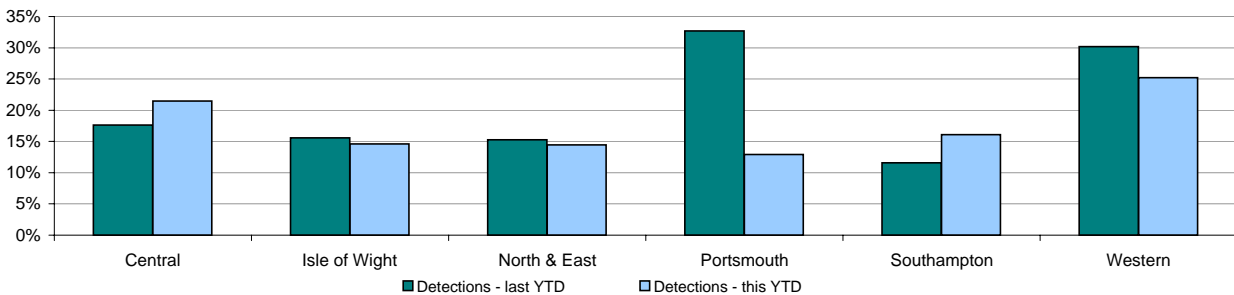


Crimes	Central	Isle of Wight	North & East	Portsmouth	Southampton	Western	Force
YTD Crimes	289	89	284	364	410	234	1670
YTD Target	351	85	375	328	339	306	1785
YTD 09/10 Crimes	363	90	386	303	346	298	1786
This month	61	26	57	77	117	58	396
% change from 09/10	-20.39%	-1.11%	-26.42%	20.13%	18.50%	-21.48%	-6.49%
MSG position	4 of 15	4 of 15	4 of 15	8 of 15	6 of 15	2 of 15	2 of 8
MSG actual	1.263	1.008	1.301	3.665	2.962	1.046	1.65
MSG average	1.688	1.572	1.669	3.37	3.401	1.538	2.236



Detections	Central	Isle of Wight	North & East	Portsmouth	Southampton	Western	Force
YTD Detection Rate	21.45%	14.61%	14.44%	12.91%	16.10%	25.21%	17.25%
This month	29.51%	7.69%	7.02%	11.69%	8.55%	18.97%	13.64%
YTD 09/10 Detections	17.63%	15.56%	15.28%	32.67%	11.56%	30.20%	20.49%
MSG position	10 of 15	14 of 15	14 of 15	8 of 15	6 of 15	5 of 15	5 of 8
MSG actual	15.54%	14.35%	12.39%	14.43%	18.68%	19.79%	15.84%
MSG average	17.80%	17.99%	18.33%	14.04%	17.29%	18.01%	16.74%

Note: Detections refer to Sanction Detections ONLY



Force target areas for making the most of our resources

Force target areas for equipping our staff to deliver

	Target	Actual	Central	Isle of Wight	North & East	Portsmouth	Southampton	Western
BME recruitment	5% of all recruits	5.1%	This is a Force measure					

	Target	Actual	Central	Isle of Wight	North & East	Portsmouth	Southampton	Western
Staff confidence in the organisation	To be agreed		To be agreed					

Minority ethnic recruitment

Force Target

The 2010/11 target is based on all police staff and police officer recruits. Data published previously has related only to police officer recruitment.

	All recruits	Minority ethnic recruits	Percentage
YTD July 2010	118	6	5.1%

Minority ethnic police officer recruitment

APACS 3.1

	All recruits	Minority ethnic recruits	Percentage
YTD July 2010	39	4	10.3%

Minority ethnic police staff recruitment (incl PCSOs)

	All recruits	Minority ethnic recruits	Percentage
YTD July 2010	79	2	2.5%

Female officer representation

APACS 3.2

	Male strength	Female strength	Percentage
YTD July 2010	2632.1	1031.8	28.16%

Staff confidence in the organisation

Force Target

This is a new target area for 2010/11. This will be based up on the results of the internal staff survey. At the current time it is not possible to set a specific target as no baseline data is available. A target will be established once data from the internal staff survey becomes available.

Monitoring information for Catching criminals and managing offenders

Serious sexual offences - detections

July 2010	Central	Isle of Wight	North & East	Portsmouth	Southampton	Western	Force
Number of Crimes	94	36	116	89	93	71	499
Number of Detections	21	11	28	13	39	19	131
Detection Rate	22.34%	30.56%	24.14%	14.61%	41.94%	26.76%	26.25%
Number of No Crimes	15	4	10	3	10	4	46

July 2009	Central	Isle of Wight	North & East	Portsmouth	Southampton	Western	Force
Number of Crimes	126	45	95	84	120	104	574
Number of Detections	21	7	18	13	34	25	118
Detection Rate	16.67%	15.56%	18.95%	15.48%	28.33%	24.04%	20.56%
Number of No Crimes	7	1	6	5	15	8	42

Class A drugs sanction detections

	Central	Isle of Wight	North & East	Portsmouth	Southampton	Western	Force
YTD July 2010	9	6	26	14	12	64	131
July 2010	1	1	8	5	5	48	68
YTD July 2009	12	5	19	16	14	63	129
July 2009	1	3	5	6	3	0	18

Drug seizures information

	Central	Isle of Wight	North & East	Portsmouth	Southampton	Western	Force
YTD June 2010	207	366	235	212	219	133	1372
YTD June 2009	327	432	275	186	295	155	1670
% change from 09/10	-36.7%	-15.3%	-14.5%	14.0%	-25.8%	-14.2%	-17.8%

Note: This data is produced one month in arrears

Arrest and disposal information

June 2010	Central	Isle of Wight	North & East	Portsmouth	Southampton	Western	Force
Bailed	487	315	445	341	408	499	2495
Charged	528	193	512	417	468	383	2501
Cautioned	101	33	84	75	55	58	406
PND	20	14	8	18	21	14	95
Warning	33	41	30	4	19	26	153
No further action	453	216	364	311	304	343	1991

Bail rates

June 2010	Central	Isle of Wight	North & East	Portsmouth	Southampton	Western	Force
People Arrested	983	474	836	767	774	724	4558
No of arrests	1414	615	1192	1045	1129	1113	6508
% Bailed on First	31.1%	44.3%	33.1%	26.7%	33.5%	35.4%	not available

Monitoring information for Catching criminals and managing offenders

Detections by disposal type - Volume

YTD July 2010	Central	Isle of Wight	North & East	Portsmouth	Southampton	Western	Force
Charge	1632	610	1607	1379	1698	1219	8145
Caution	369	130	315	283	211	292	1600
Conditional Caution	16	14	11	27	18	14	100
Reprimand/warning	183	90	221	52	86	180	812
TIC	62	14	57	29	54	54	270
PND	140	42	184	242	157	146	911
Cannabis warning	124	132	171	71	81	72	651
	2526	1032	2566	2083	2305	1977	12489

Detections by disposal type - Proportion

YTD July 2010	Central	Isle of Wight	North & East	Portsmouth	Southampton	Western	Force
Charge	64.61%	59.11%	62.63%	66.20%	73.67%	61.66%	61.66%
Caution	14.61%	12.60%	12.28%	13.59%	9.15%	14.77%	14.77%
Conditional Caution	0.63%	1.36%	0.43%	1.30%	0.78%	0.71%	0.71%
Reprimand/warning	7.24%	8.72%	8.61%	2.50%	3.73%	9.10%	9.10%
TIC	2.45%	1.36%	2.22%	1.39%	2.34%	2.73%	2.73%
PND	5.54%	4.07%	7.17%	11.62%	6.81%	7.38%	7.38%
Cannabis warning	4.91%	12.79%	6.66%	3.41%	3.51%	3.64%	3.64%

Forensic results for Vehicle Crime

DNA - Theft of a motor vehicle

	Central	Isle of Wight	North & East	Portsmouth	Southampton	Western
June YTD 2009/10	0	1	0	1	0	1
June YTD 2008/09	0	0	0	0	2	0
Difference	0	1	0	1	-2	1

Fingerprint Detections - Theft of a motor vehicle

	Central	Isle of Wight	North & East	Portsmouth	Southampton	Western
June YTD 2009/10	1	2	1	1	0	4
June YTD 2008/09	12	10	7	10	1	0
Difference	-11	-8	-6	-9	-1	4

DNA - Theft from a motor vehicle

	Central	Isle of Wight	North & East	Portsmouth	Southampton	Western
June YTD 2009/10	3	0	2	4	3	2
June YTD 2008/09	0	0	1	2	2	2
Difference	3	0	1	2	1	0

Fingerprint Detections - Theft from a motor vehicle

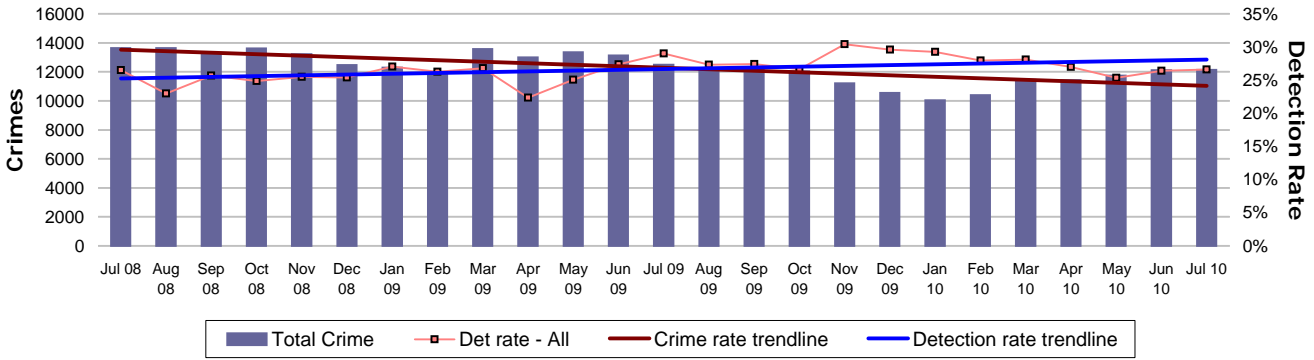
	Central	Isle of Wight	North & East	Portsmouth	Southampton	Western
June YTD 2009/10	3	3	1	1	2	2
June YTD 2008/09	6	4	5	8	5	2
Difference	-3	-1	-4	-7	-3	0

Outstanding suspects - suspects that are shown on RMS for offences up to and including 30/04/2010

	Central	Isle of Wight	North & East	Portsmouth	Southampton	Western	Force
Crime count	70	26	93	99	110	85	483
Total susps	93	27	114	125	126	98	583

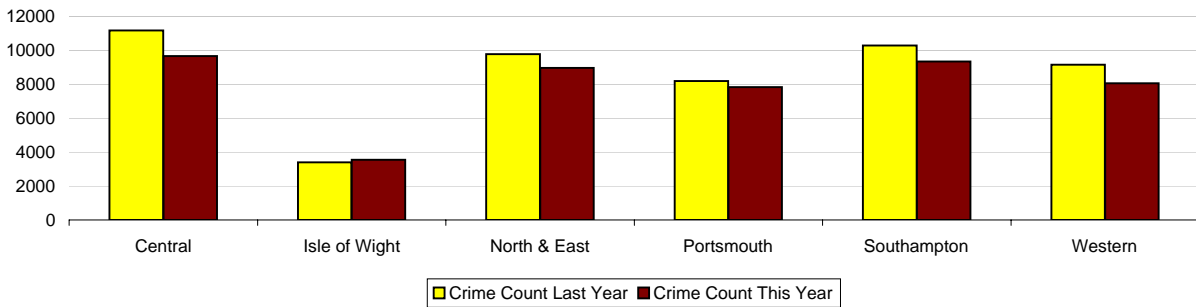
Monitoring information for Protecting our communities

All crime



Crimes

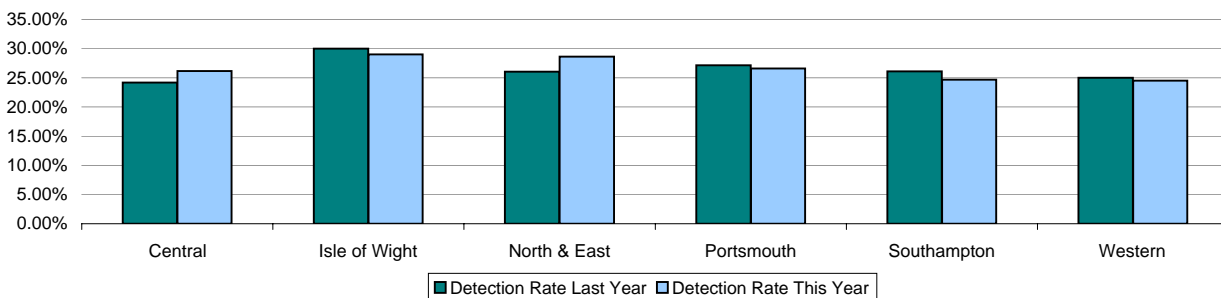
	Central	Isle of Wight	North & East	Portsmouth	Southampton	Western	Force
YTD Crimes	9659	3554	8963	7836	9344	8059	47415
YTD 09/10 Crimes	11174	3393	9765	8190	10283	9154	51959
This month	2471	877	2271	1946	2409	2156	12130
% change from 09/10	-13.56%	4.75%	-8.21%	-4.32%	-9.13%	-11.96%	-8.75%
MSG position	10 of 15	14 of 15	8 of 15	13 of 15	13 of 15	5 of 15	6 of 8
OCU actual	16.471	19.064	15.462	29.646	29.801	14.538	19.099
MSG average	15.799	16.383	15.341	23.224	24.848	15.407	18.229



Detections

	Central	Isle of Wight	North & East	Portsmouth	Southampton	Western	Total
YTD Detection Rate	26.15%	29.04%	28.63%	26.58%	24.67%	24.53%	26.34%
This month	25.01%	31.81%	28.53%	29.80%	22.75%	25.79%	26.62%
YTD 09/10 Detections	24.18%	30.03%	26.06%	27.14%	26.11%	25.03%	25.91%
MSG position	5 of 15	8 of 15	7 of 15	2 of 15	7 of 15	9 of 15	5 of 8
OCU actual	27.66%	25.66%	28.67%	29.19%	27.28%	25.59%	27.66%
MSG average	28.53%	27.22%	28.27%	26.18%	27.26%	26.79%	28.53%

Note: Detections refer to Sanction Detections ONLY



Monitoring information for Protecting our communities

Number of convictions recorded against identified, prolific and other priority offenders (PPOs)

	April 2010	May 2010	June 2010	Force YTD
Persistent Young Offenders	4	7	7	18
Priority Prolific Offenders	18	19	19	56
Persistent Priority Prolific Young Off's	2	1	0	3
Young Offenders	197	187	203	587

FIU1 submissions

	Central	Isle of Wight	North & East	Portsmouth	Southampton	Western	Force
YTD July 2010	41	59	77	37	48	55	317
Number of eligible detections	1130	525	1295	1158	1060	922	6090
% submission rate	4%	11%	6%	3%	5%	6%	5%

	Central	Isle of Wight	North & East	Portsmouth	Southampton	Western	Force
YTD July 2009	84	85	81	63	89	64	466
Number of eligible detections	1331	539	1251	1271	1305	1120	6817
% submission rate	6%	16%	6%	5%	7%	6%	7%

	Central	Isle of Wight	North & East	Portsmouth	Southampton	Western	Force
July 2010	13	2	22	5	6	13	61
Number of eligible detections	274	130	306	322	229	286	1547
% submission rate	5%	2%	7%	2%	3%	5%	4%

	Central	Isle of Wight	North & East	Portsmouth	Southampton	Western	Force
July 2009	27	15	31	15	33	25	146
Number of eligible detections	349	130	323	340	353	306	1801
% submission rate	8%	12%	10%	4%	9%	8%	8%

Eligible crimes are those covered by Proceeds of Crime Act (POCA)

Monitoring information for Protecting our communities

Actual Cash Seizure Value (Forfeited) by month

	Central	Isle of Wight	North & East	Portsmouth	Southampton	Western	Crime OCU	Force
April 2010	£0.00	£0.00	£1,745.00	£152,477.62	£6,000.00	£0.00	£0.00	£160,222.62
May 2010	£0.00	£2,385.00	£7,440.00	£1,970.00	£0.00	£0.00	£0.00	£11,795.00
June 2010	£0.00	£0.00	£4,804.86	£682.44	£4,205.00	£0.00	£0.00	£9,692.30
July 2010	£3,298.52	£0.00	£4,660.00	£0.00	£0.00	£4,241.30	£24,910.00	£37,109.82

Gun crime rate

	Central	Isle of Wight	North & East	Portsmouth	Southampton	Western	Force	MSG position 01 01 09 - 31 12 09
YTD June 2010	3	0	1	2	2	1	9	4
YTD June 2009	3	0	2	0	1	1	7	
% change from 08/09	0.0%	0.0%	-50.0%	N/A	100.0%	0.0%	28.6%	

Apacs 5.5

Gun crime figures published reflect the APACS technical definition which includes "where the victim is convinced of the presence of a firearm, even if it is concealed and there is evidence of the suspect's intention to create this impression".

Knife crime rate

	Central	Isle of Wight	North & East	Portsmouth	Southampton	Western	Force	MSG position 01 10 08 - 30 09 09
YTD June 2010	25	8	27	21	38	8	127	3
YTD June 2009	24	6	37	32	59	23	181	
% change from 09/10	4.2%	33.3%	-27.0%	-34.4%	-35.6%	-65.2%	-29.8%	

Apacs 5.6

Knife = knife or other sharp instrument (including broken glass/bottles) piercing the skin or, for threats and attempts, instruments normally capable of piercing the skin. The measure for counting broken glass/bottles has changed for 09-10 with less occurrences being counted by the Home Office. Knife crime figures published reflect the APACS technical definition which includes "where the victim is convinced of the presence of a knife, even if it is concealed and there is evidence of the suspect's intention to create this impression".

Murder offences

	Central	Isle of Wight	North & East	Portsmouth	Southampton	Western	Force
YTD July 2010	0	0	1	1	1	4	7
YTD Domestic Murders 2010/11	0	0	0	0	1	1	2
YTD July 2009	3	1	1	1	1	1	8
YTD Domestic Murders 2009/10	0	0	0	0	0	0	0

Apacs 5.4

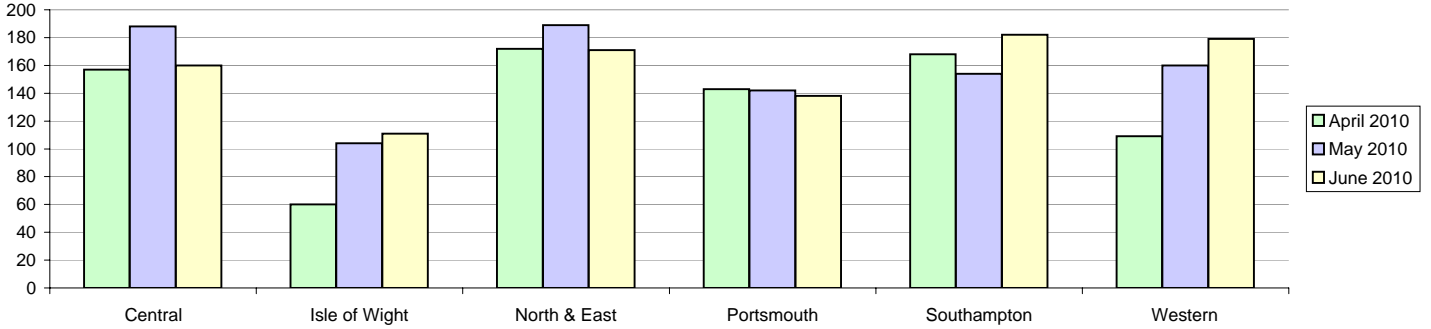
Note: The definition of Domestic Murder used above is now in line with the 2009/10 APACS Guidance (in previous months, the government and ACPO definition was used - this is located on pg 21 of the profile). In APACS a domestic homicide is where the relationship between victim and suspect was either: Spouse, Common law spouse or cohabiting partner, Boyfriend/Girlfriend, Ex-boyfriend/girlfriend or Adulterous relationship.

Monitoring information for Protecting our communities

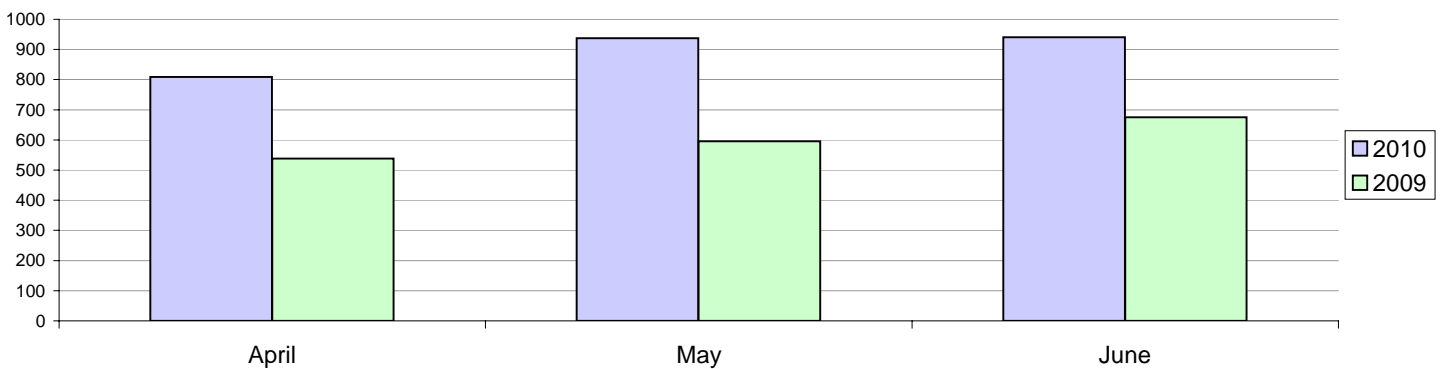
Missing Persons

Breakdown by OCU

	Central	Isle of Wight	North & East	Portsmouth	Southampton	Western	Force
April 2010	157	60	172	143	168	109	809
May 2010	188	104	189	142	154	160	937
June 2010	160	111	171	138	182	179	941



	Force
Force Total April 2009	538
Force Total April 2010	809
% change from 2009	50.37%
Force Total May 2009	596
Force Total May 2010	937
% change from 2009	57.21%
Force Total June 2009	675
Force Total June 2010	941
% change from 2009	39.41%



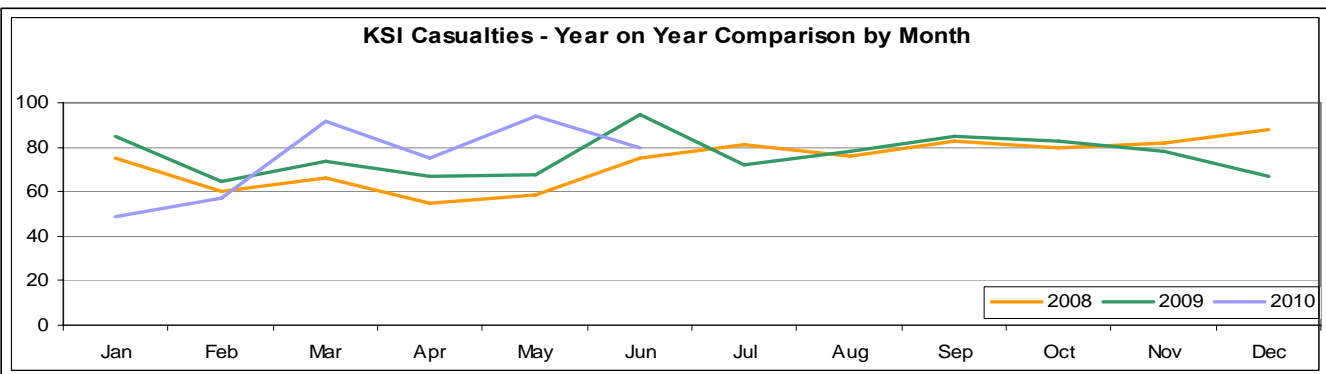
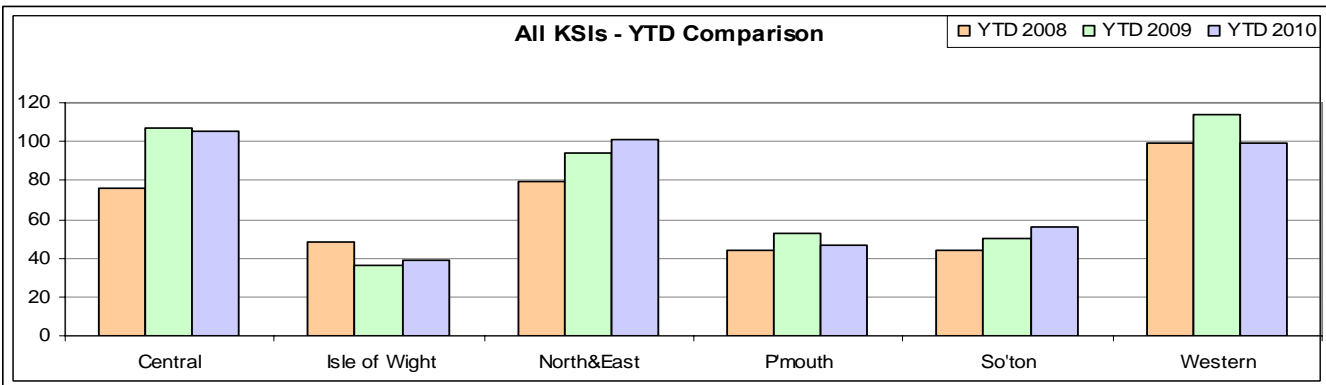
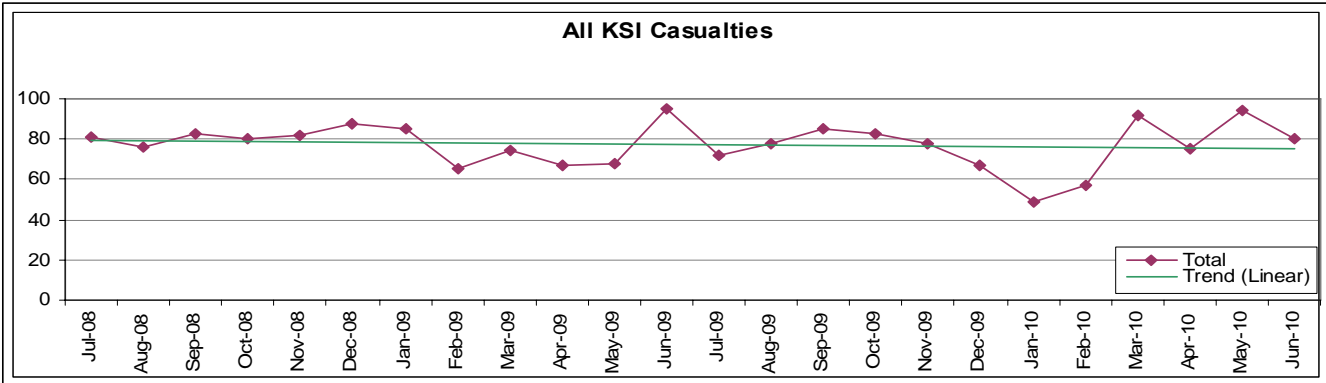
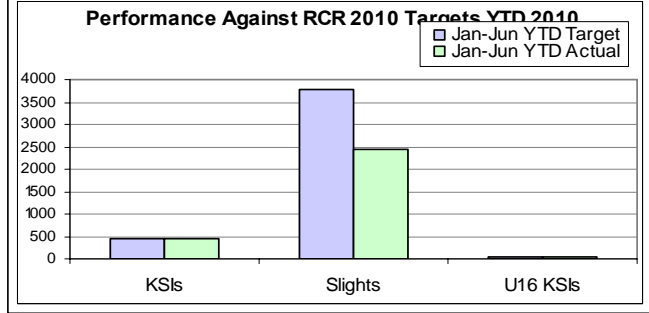
Monitoring information for Protecting our communities

Casualty reduction

	Central	Isle of Wight	North & East	Portsmouth	Southampton	Western	Force
YTD 2010	105	39	101	47	56	99	447
YTD 2009	107	36	94	53	50	114	454
% change from 2009	-1.87%	8.33%	7.45%	-11.32%	12.00%	-13.16%	-1.54%
June 2010	11	9	21	6	10	23	80
June 2009	22	10	17	12	10	24	95
% change from 2009	-50.00%	-10.00%	23.53%	-50.00%	0.00%	-4.17%	-15.79%

Performance Against RCR 2010 Targets

Jun-10	KSIs	Slight	U16 KSIs
Year Target	862	7584	86
Monthly Target	71.8	632.0	7.2
Jan-Jun YTD Target	431.0	3792.0	43.0
June Actual	80	510	7
Jan-Jun YTD Actual	447	2432	45
YTD Actual against Target	3.7%	-35.9%	4.7%



Exception report for Making the most of our resources

Overtime data & bank holiday overtime data

Current overspend **£47,800**

Basic overtime costs

Due to payroll running one month and 15 days in arrears, this report represents overtime spend to 15/06/2010 and therefore represents 29.2% of the year

	Central	Isle of Wight	North & East	Portsmouth	Southampton	Western	Crime	Operations	CWUN
PC, DC, PS, DS Establishment	561	203	525	381	458	487	218	366	27
Strength + or - establishment at 30/06/2010	-2	1	-1	10	4	21	-17	-10	-1
OCU budgeted police basic pay	£ 20,531,000	£ 7,640,200	£ 18,928,400	£ 14,105,400	£ 16,751,000	£ 18,022,600	£ 14,098,200	£ 14,364,900	£ 1,552,000
OCU budgeted police regular overtime from ZBB	£ 430,300	£ 178,600	£ 572,400	£ 258,000	£ 505,000	£ 497,800	£ 459,800	£ 400,500	£ 90,000
Officer OT as % of basic pay	2.10%	2.34%	3.02%	1.83%	3.01%	2.76%	3.26%	2.79%	5.80%
Budgeted OT / officer	£767	£880	£1,091	£677	£1,103	£1,023	£2,109	£1,094	£3,333
Spend to date	£65,235	£34,090	£96,155	£45,653	£111,459	£82,560	£82,563	£48,913	£11,386
Overtime spend per officer, year to date	£ 116.30	£ 167.93	£ 183.24	£ 119.82	£ 243.47	£ 169.70	£ 378.73	£ 133.64	£ 421.72
% of overtime budgeted overtime spent , year to date	15.16%	19.09%	16.80%	17.69%	22.07%	16.58%	17.96%	12.21%	12.65%

Bank holiday overtime

	Central	Isle of Wight	North & East	Portsmouth	Southampton	Western	Crime	Operations	CWUN
OCU budgeted police BH overtime	£ 296,100	£ 106,400	£ 251,600	£ 158,200	£ 183,600	£ 203,400	£ 114,900	£ 291,300	£ 22,400
% OCU budgeted police BH spent, year to date	39%	43%	37%	47%	43%	45%	27%	36%	42%
% bank holidays elapsed, year to date	36%	36%	36%	36%	36%	36%	36%	36%	36%
Projected year underspend / overspend	-£ 23,255	-£ 18,543	-£ 7,300	-£ 45,134	-£ 34,621	-£ 45,644	£ 30,943	£ 4,685	-£ 3,597

This covers 4 (of the 11) bank holidays year to date

Projected year underspend / overspend based on ytd % variance applied to annual budget. Excludes all events and agreements. overspend)