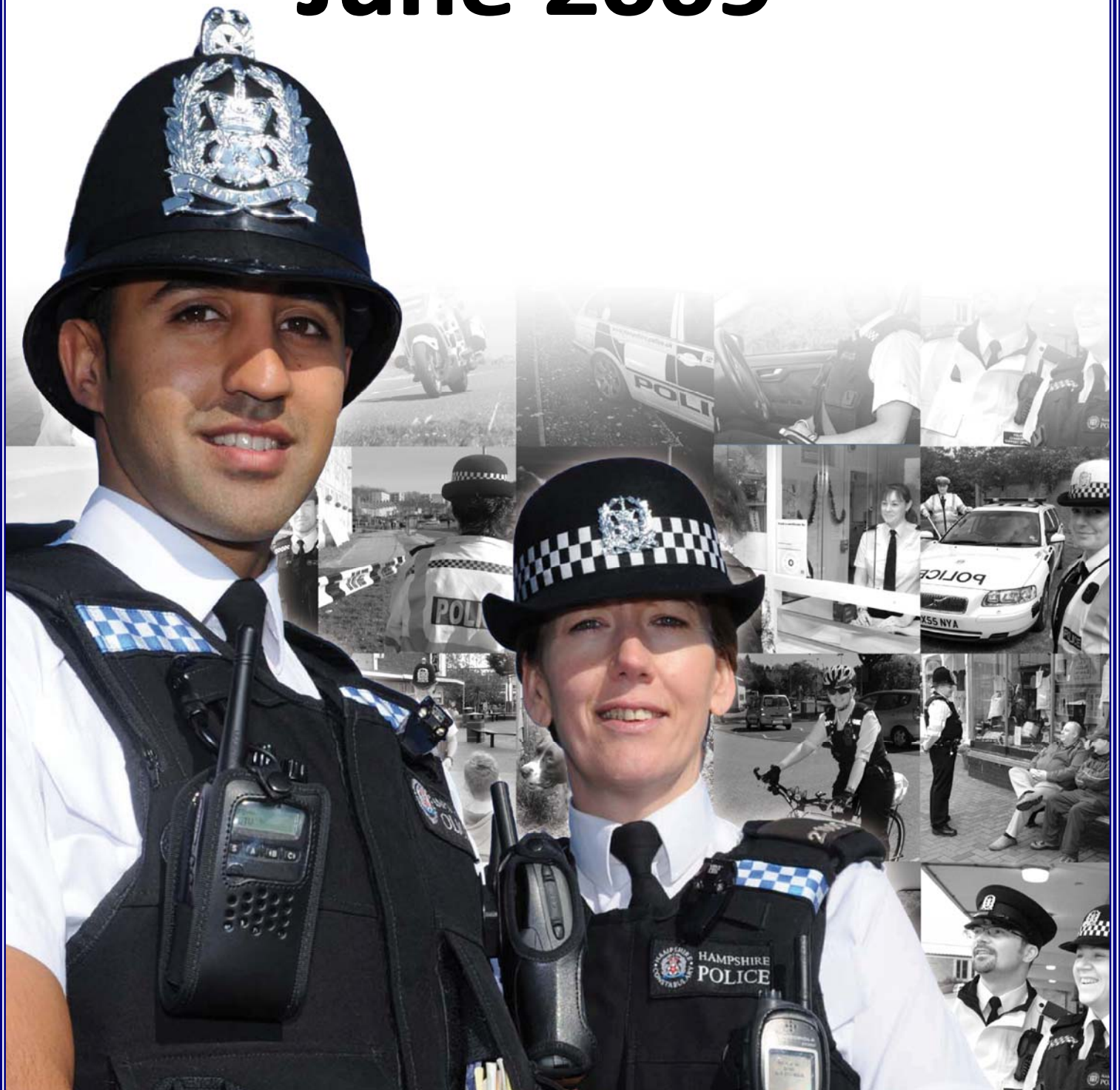


# Performance Profile

## June 2009



## Summary

## 2009/10 Reporting Year

This document contains a strategic overview of the Constabulary's performance. It has a variety of performance measures within it. The format of the profile has been aligned to the Policing Priorities identified by the Control Strategy. It provides information on our performance against Force targets, some of the APACS Statutory Performance Indicators (SPI) and the Policing Pledge. It also aims to provide supplementary information to assist in understanding reasons behind the performance in these areas. It has been designed as a headline document that will enable our customers, both internally and externally, to easily assess performance information for key domains.

At the front of the document there are several matrices that reflect our performance against our targets, firstly year to date and secondly relevant for that particular month.

Performance in key areas is then explored in more depth with an indication of where each measure has originated - for example, APACS Statutory Performance Indicator (SPI) or a Force Control Strategy (FCS) measure.

Where applicable, within the document, MSG (Most Similar Group) data is published along with the crime and detection data. MSGs are calculated by the Home Office based on a number of socio-demographic & geographic variables which are strongly linked to crime/incident levels and the fear of crime. These groups provide a benchmark for comparison of crime and detection rates. Below the applicable crime tables there are three rows relating to MSG data. The first provides the MSG position for the OCU/Force for that crime type. The second displays OCU Actual, this is the number of offences per 1,000 population. The third row shows the MSG Average which is the total number of offences per 1,000 population divided by the number within the MSG. The same three rows are provided in relation to detection data, where data is provided in % figures rather than per 1,000 population.

Please note: iQuanta data is provisional. Within the profile, Hampshire data is published and compared against the MSG average. The other forces within Hampshire's MSG are: Avon and Somerset, Bedfordshire, Essex Hertfordshire, Kent, Sussex and Thames Valley. We are unable to provide figures from iQuanta for these forces, due to the provisional nature of this data.

This document is then taken forward by key stakeholders within the organisation to the Force Performance Review Group, where it is used to highlight areas of good performance and those for development.

This is an evolving document and as such, the content may alter over time and any feedback would be welcomed by the Performance Review Team.

MSG Colour Key

| Force | OCU   |
|-------|-------|
| 1-2   | 1-4   |
| 3-4   | 5-8   |
| 5-6   | 9-12  |
| 7-8   | 13-15 |

## Year to date and Monthly performance matrices

4-6 including notes on matrices terminology

## Policing Pledge Scorecard

7 Policing Pledge Scorecard

## Providing an excellent service

|      |   |         |     |                                   |
|------|---|---------|-----|-----------------------------------|
| 8    | British Crime Survey confidence data  | SPI 2.2 | FCS | iQuanta                           |
| 8    | Local confidence survey data  |         |     | Consultation & Research Team      |
| 8    | British Crime Survey supplementary data                                       |         |     | Consultation & Research Team      |
| 8    | Overall satisfaction  | SPI 1.1 | FCS | Consultation & Research Team      |
| 8    | Being kept informed   |         | FCS | Consultation & Research Team      |
| 9    | Comparative satisfaction of minority ethnic groups                            | SPI 1.2 |     | Consultation & Research Team      |
| 9    | Satisfaction of victims of racist incidents                                   | SPI 1.3 |     | Consultation & Research Team      |
| 9    | MSG user satisfaction data  |         |     | Consultation & Research Team      |
| 9-10 | Responding to victims of crime (inc victim code compliance data)              |         |     | Citizen Focus Inspector           |
| 10   | Letters of appreciation, reports of incivility, expression of dissatisfaction |         |     | Professional Standards Department |
| 11   | Responding to public contact (inc call handling data)                         |         |     | Call Management                   |

## An active presence in every neighbourhood

|    |  |  |     |   |
|----|--|--|-----|---|
| 12 | Rowdy and nuisance behaviour               |  | FCS | Business Objects                        |
| 12 | Vehicle nuisance/Inappropriate vehicle use |  | FCS | Business Objects                        |
| 13 | Safer Neighbourhood Teams                  |  |     | Service Delivery Department & Personnel |
| 14 | Criminal damage                            |  | FCS | Business Objects                        |

## Catching criminals and managing offenders

|    |  |             |     |                             |
|----|--|-------------|-----|-----------------------------|
| 15 | All crime and sanction detections                            |             | FCS | Business Objects            |
| 16 | Serious violent crime, sanction detections and OBTJ rate     | SPI 5.1&6.1 | FCS | Business Objects            |
| 17 | Assault with less serious injury                             | SPI 5.3     | FCS | Business Objects            |
| 18 | Serious acquisitive crime, sanction detections and OBTJ rate | SPI 5.2&6.2 | FCS | Business Objects            |
| 19 | Serious acquisitive crime breakdown                          |             |     | Business Objects            |
| 20 | Gun and knife crime  | SPI 5.5&5.6 |     | Business Objects            |
| 20 | Serious sexual crime OBTJ rate                               | SPI 6.4     |     | Criminal Justice Department |
| 20 | Murder offences incl domestic murders                        | SPI 5.4     | FCS | Business Objects            |
| 20 | FIU1 submission levels                                       |             | FCS | Force Intelligence          |
| 20 | PPO convictions  | SPI 10.1    | FCS | Criminal Justice Department |
| 20 | Class A drugs sanction detections                            |             | FCS | Business Objects            |
| 20 | Drug seizures  |             |     | Performance Review Team     |
| 20 | Organised Crime Groups                                       |             |     | 7 OCU Performance Team      |

## Protecting our communities

|    |   |          |     |                        |
|----|---|----------|-----|------------------------|
| 21 | Domestic violence and abuse                                   |          | FCS | Business Objects       |
| 21 | Repeat incidents of domestic violence cases reviewed at MARAC | SPI 14.1 |     | ACCTO Portfolio        |
| 21 | Hate crime detection rate                                     |          | FCS | Business Objects       |
| 22 | Road traffic casualties                                       | SPI 9.1  | FCS | 8 OCU Performance Team |

## Making the most of our resources

|    |                                    |          |     |   |
|----|------------------------------------|----------|-----|---|
| 23 | Police officer sickness            | SPI 13.1 | FCS | PRT - Delphi + Personnel - Staffing Figures |
| 24 | Police staff sickness              | SPI 13.2 |     | PRT - Delphi + Personnel - Staffing Figures |
| 25 | Overdue PDRs                       |          |     | Personnel                                   |
| 26 | NCRS compliance - peer audits only |          | FCS | Force Incident & Crime Registrar            |
| 26 | Budget spend                       | SPI 12.1 | FCS | Finance                                     |
| 26 | Efficiency savings                 |          | FCS | Finance                                     |
| 27 | SO support to TO                   |          |     | 7 and 8 OCUs                                |

## Equipping our team to deliver

|    |                                     |         |     |                     |
|----|-------------------------------------|---------|-----|---------------------|
| 28 | Financial awareness training        |         | FCS | Training Department |
| 28 | Preparing for frontline supervision |         |     | Training Department |
| 28 | Mobile data                         |         |     | Not yet available   |
| 28 | Minority ethnic officer recruitment | SPI 3.1 |     | Personnel           |
| 28 | Female officer representation       | SPI 3.2 |     | Personnel           |

## Restricted data

## Year to date performance targets matrix

|  | Target               | Actual    | Central                 | Isle of Wight | North & East | Portsmouth | Southampton | Western |
|--|----------------------|-----------|-------------------------|---------------|--------------|------------|-------------|---------|
| <b>Providing an excellent service</b>              |                      |           |                         |               |              |            |             |         |
| Confidence in local police                         | >51.3%               | 47.8%     | This is a Force measure |               |              |            |             |         |
| Overall satisfaction (data for rolling 12 months)  | >65.0%               | 65.0%     | 66.0%                   | 72.0%         | 63.0%        | 65.0%      | 61.0%       | 66.0%   |
| <b>An active presence in every neighbourhood</b>   |                      |           |                         |               |              |            |             |         |
| Rowdy & nuisance behaviour                         | 18725                | 19227     | 3726                    | 1431          | 3380         | 3177       | 4431        | 3082    |
|  | OCU specific targets |           | 3466                    | 1334          | 3614         | 2854       | 4408        | 3050    |
| Vehicle nuisance / inappropriate vehicle use       | 3732                 | 3118      | 787                     | 199           | 683          | 308        | 564         | 577     |
|  | OCU specific targets |           | 868                     | 249           | 759          | 322        | 705         | 830     |
| Reduce criminal damage                             | 8535                 | 8832      | 2065                    | 608           | 1761         | 1106       | 1786        | 1506    |
|  | OCU specific targets |           | 1882                    | 626           | 1640         | 1157       | 1654        | 1577    |
| <b>Catching criminals &amp; managing offenders</b> |                      |           |                         |               |              |            |             |         |
| All crime  | 40522                | 39956     | 8584                    | 2660          | 7490         | 6296       | 7984        | 6942    |
|  | OCU specific targets |           | 8258                    | 2642          | 7672         | 6316       | 8499        | 7135    |
| All crime SD                                       | >25%                 | 24.8%     | 23.3%                   | 28.9%         | 25.1%        | 26.0%      | 24.5%       | 24.2%   |
|  | OCU specific targets |           | 25.0%                   | 30.0%         | 25.5%        | 25.5%      | 25.0%       | 25.0%   |
| Serious violent crime                              | 226                  | 247       | 38                      | 18            | 38           | 38         | 79          | 36      |
|  | OCU specific targets |           | 43                      | 16            | 36           | 45         | 59          | 28      |
| Serious violent crime SD                           | >50%                 | 56.3%     | 65.8%                   | 72.2%         | 73.7%        | 57.9%      | 38.0%       | 58.3%   |
|  | OCU specific targets |           | 57.0%                   | 60.0%         | 56.0%        | 41.0%      | 45.0%       | 50.0%   |
| Assault with less serious injury                   | 3439                 | 3669      | 731                     | 271           | 647          | 659        | 799         | 562     |
|  | OCU specific targets |           | 723                     | 242           | 610          | 497        | 810         | 556     |
| Serious sexual offences (OBTJ)                     | Data being           | developed | This is a Force measure |               |              |            |             |         |
| Serious acquisitive crime                          | 5584                 | 4927      | 1000                    | 216           | 956          | 870        | 926         | 959     |
|  | OCU specific targets |           | 1020                    | 229           | 1095         | 983        | 1219        | 1038    |
| Serious acquisitive crime SD                       | >15%                 | 12.9%     | 9.1%                    | 21.8%         | 15.9%        | 16.2%      | 8.9%        | 12.9%   |
| Class A drugs SD*                                  | >100                 | 111       | 11                      | 2             | 14           | 10         | 11          | 63      |
|  | OCU specific targets |           | 12.5                    | 10.0          | 19.9         | 19.9       | 24.9        | 12.5    |
| Organised crime group (OCG) - disruptions          | >6                   | 2         | Owned by Crime OCU      |               |              |            |             |         |

## Year to date performance targets matrix

|   | Target | Actual |
|---|--------|--------|
| <b>Protecting our communities</b>       |        |        |
| Domestic crimes arrest rate             | >80%   | 72.6%  |
| Hate crime SD                           | >45%   | 42.7%  |
| Road traffic casualties                 | <148   | 118    |
| <b>Making the most of our resources</b> |        |        |
| Police officer sickness                 | <1.87  | 1.83   |
| Police staff sickness                   | <1.87  | 1.94   |
| Budget spend                            | <17%   | 16%    |
| Efficiency savings 2008-2011            | >£30m  | £9.4m  |
| <b>Equipping our staff to deliver</b>   |        |        |
| Financial awareness training            |        |        |
| Preparing for frontline supervision     |        |        |
| Mobile data                             |        |        |

| Central                                 | Isle of Wight | North & East | Portsmouth | Southampton | Western |
|---|---------------|--------------|------------|-------------|---------|
| <b>Protecting our communities</b>       |               |              |            |             |         |
| 70.7%                                   | 76.8%         | 71.2%        | 77.4%      | 73.9%       | 68.6%   |
| 38.7%                                   | 75.0%         | 50.0%        | 43.2%      | 43.4%       | 32.6%   |
| Owned by Operations OCU                 |               |              |            |             |         |
| <b>Making the most of our resources</b> |               |              |            |             |         |
| 1.62                                    | 1.35          | 1.22         | 1.91       | 1.95        | 2.88    |
| 2.10                                    | 1.62          | 2.22         | 1.50       | 1.13        | 1.22    |
| 16%                                     | 15%           | 16%          | 17%        | 20%         | 15%     |
| This is a Force measure                 |               |              |            |             |         |
| <b>Equipping our staff to deliver</b>   |               |              |            |             |         |
| Data not suitable for matrix            |               |              |            |             |         |
| Data not suitable for matrix            |               |              |            |             |         |
| Data not suitable for matrix            |               |              |            |             |         |

|                                       |          |
|---------------------------------------|----------|
| <b>Force Total - targets achieved</b> | <b>9</b> |
|---------------------------------------|----------|

|          |           |          |           |          |          |
|----------|-----------|----------|-----------|----------|----------|
| <b>7</b> | <b>10</b> | <b>9</b> | <b>11</b> | <b>6</b> | <b>9</b> |
|----------|-----------|----------|-----------|----------|----------|

### Notes to be read in conjunction with matrices

**All citizen focus data**

**OBTJ**

**Road traffic casualties**

**Budget spend**

**Efficiency savings**

**SD**

**Sickness data**

**OCU specific targets**

Based on "completely or very satisfied"

Offenders Brought To Justice - current data is to March 2009

All data until 31 May 2009

Data is always one month in arrears

3 year target of £30m, notionally £10m per year. Data shown here is actual for 2008/2009

Sanction detections

Force Actual = total for ALL officers/police staff - including those not in OCU

OCU specific targets are rounded to 2 decimal places; the actual figure may therefore seem the same but appear red due to this rounding

## Monthly performance targets matrix

This matrix is based on monthly data compared to Force targets

|  | Target               | Actual | Central                 | Isle of Wight | North & East | Portsmouth | Southampton | Western   |
|--|----------------------|--------|-------------------------|---------------|--------------|------------|-------------|-----------|
| <b>An active presence in every neighbourhood</b>   |                      |        |                         |               |              |            |             |           |
| Rowdy & nuisance                                   | 6173                 | 6418   | 1234                    | 491           | 1156         | 1087       | 1395        | 1055      |
|  | OCU specific targets |        | 1142                    | 440           | 1191         | 941        | 1453        | 1006      |
| Vehicle nuisance / inappropriate vehicle use       | 1230                 | 1098   | 282                     | 50            | 255          | 137        | 176         | 198       |
|  | OCU specific targets |        | 286                     | 82            | 250          | 106        | 233         | 273       |
| Reduce criminal damage                             | 2814                 | 2738   | 681                     | 205           | 550          | 305        | 543         | 454       |
|  | OCU specific targets |        | 620                     | 206           | 541          | 381        | 545         | 520       |
| <b>Catching criminals &amp; managing offenders</b> |                      |        |                         |               |              |            |             |           |
| All crime  | 13359                | 13423  | 2807                    | 1129          | 2478         | 1990       | 2677        | 2342      |
|  | OCU specific targets |        | 2722                    | 871           | 2529         | 2082       | 2802        | 2352      |
| All crime (SD)                                     | 25.0%                | 27.1%  | 24.7%                   | 31.4%         | 25.2%        | 28.8%      | 28.0%       | 27.2%     |
|  | OCU specific targets |        | 25.0%                   | 30.0%         | 25.5%        | 25.5%      | 25.0%       | 25.0%     |
| Serious violent crime                              | 75                   | 82     | 16                      | 7             | 16           | 14         | 22          | 7         |
|  | OCU specific targets |        | 14                      | 5             | 12           | 15         | 19          | 9         |
| Serious violent crime SD                           | >50%                 | 61.0%  | 56.3%                   | 57.1%         | 68.8%        | 42.9%      | 72.7%       | 57.1%     |
|  | OCU specific targets |        | 57.0%                   | 60.0%         | 56.0%        | 41.0%      | 45.0%       | 50.0%     |
| Assault with less serious injury                   | 1134                 | 1249   | 262                     | 86            | 223          | 201        | 270         | 207       |
|  | OCU specific targets |        | 239                     | 80            | 201          | 164        | 267         | 183       |
| Serious acquisitive crime                          | 1841                 | 1620   | 321                     | 77            | 331          | 270        | 319         | 302       |
|  | OCU specific targets |        | 336                     | 75            | 361          | 324        | 402         | 342       |
| Serious acquisitive crime SD                       | >15%                 | 12.3%  | 10.3%                   | 28.6%         | 13.6%        | 8.9%       | 10.7%       | 13.6%     |
| Serious sexual offences (OBTJ)                     | Data being developed |        | This is a Force measure |               |              |            |             |           |
| Class A drugs SD                                   | >33                  | 68     | 4                       | 1             | 2            | 5          | 8           | 48        |
| <b>Protecting our communities</b>                  |                      |        |                         |               |              |            |             |           |
| Domestic crimes arrest rate                        | >80%                 | 66.7%  | 66.1%                   | 77.8%         | 68.7%        | 71.3%      | 66.7%       | 58.1%     |
| Hate crime SD                                      | >45%                 | 40.7%  | 48.1%                   | 50.0%         | 28.6%        | 41.9%      | 35.2%       | 52.9%     |
| <b>Making the most of our resources</b>            |                      |        |                         |               |              |            |             |           |
| Police officer sickness                            | <0.625               | 0.62   | 0.51                    | 0.30          | 0.35         | 0.55       | 0.90        | 1.04      |
| Police staff sickness                              | <0.625               | 0.65   | 0.75                    | 0.39          | 0.68         | 0.48       | 0.26        | 0.37      |
| <b>Force Total - targets achieved</b>              | <b>7</b>             |        | <b>4</b>                | <b>7</b>      | <b>5</b>     | <b>9</b>   | <b>9</b>    | <b>10</b> |

## Hampshire Constabulary Policing Pledge Scorecard

| Pledge | YTD<br>2009/2010 |
|--------|------------------|
|--------|------------------|

|  |       |
|--|-------|
| Percentage of respondents tending to 'agree' or 'strongly agree' that: 'The police and local council are dealing with the anti-social behaviour and crime issues that matter in this area' | 47.8% |
|--|-------|

### Pledge 1 - Treat people fairly with dignity and respect, ensuring they have fair access to our services

|   |       |
|---|-------|
| Percentage of respondents answering 'strongly agree' or 'tend to agree' when asked 'The police in this area treat everyone fairly regardless of who they are' | 66.1% |
|---|-------|

### Pledge 2 - Help promote our dedicated Safer Neighbourhoods Teams to the local community, including where they contact them and how to work with them

Measure under development - dip sampling of media/communications to be carried out

### Pledge 3 - Ensure we are visible in our neighbourhoods at times when we will be most effective and when communities most. Safer Neighbourhoods teams will spend at least 80% of their time visibly working in neighbourhoods, tackling priorities

|   |      |
|---|------|
| %age with 1-2 years experience working in this SNT            | 21%  |
| %age with 2-5 years experience working in this SNT            | 47%  |
| Safer Neighbourhood Team abstractions - OCU level see page 11 | See  |
| Safer Neighbourhood Team Vacancy Rate                         | In p |

### Pledge 4 - Respond to every message directed to every Safer Neighbourhood Team within 24 hours and, where necessary, detailed response as soon as we can

Measure under development - dip sampling of media/communications to be carried out

### Pledge 5 - Aim to answer 999 calls within 10 seconds, deploy to emergencies immediately and give an estimated time provide assistance to callers as safely and quickly as possible, aiming to get to them within 15 minutes in urban areas or rural areas

|  |       |
|--|-------|
| No. of 999 calls                             | 22988 |
| %age of 999 calls answered within 10 seconds | 94.4% |

### Pledge 6 - Answer all non emergency calls promptly. If attendance is needed, agree with the caller an acceptable time for

|  |       |
|--|-------|
| No of non emergency calls                              | 72333 |
| %age of non emergency calls answered within 10 seconds | 83.5% |
| Scheduling pilot permanent reporting in progress       | In p  |

### Pledge 7 - Create opportunities to meet them at least once a month to agree or update neighbourhood priorities. Arrange arrangements for meetings, street briefings, mobile police station visits and similar by keeping beat web pages up to date and online postcode search to our communities so that they can be kept up to date

Measure under development - dip sampling of media/communications to be carried out

### Pledge 8 - Provide monthly updates on what action we and our partners are taking to make neighbourhoods safer and the force is performing

|   |         |
|---|---------|
| Regular neighbourhood performance data is published on the Internet | 5 times |
| Measure under development - other monitoring to be carried out      |         |

### Pledge 9 - Agree with victims of crime how often they would like to be kept informed of progress in their case and for have the right to be kept informed at least every month if they wish and for as long as is reasonable

|   |             |
|---|-------------|
| Satisfaction of victims with respect to being kept informed (very / fairly satisfied) | 54.0%       |
| % where the victim was has been updated on a monthly basis                            | 97.6%       |
| Compliance with victims contact as part of the Victims' Code                          | See profile |

### Pledge 10 - Acknowledge any dissatisfaction with the service brought to our attention within 24 hours of it being reported ensure that appropriate steps are taken to resolve concerns

|                       |    |
|-----------------------|----|
| Reports of incivility | 53 |
|-----------------------|----|

## Providing an excellent service

### British Crime Survey Confidence Data

SPI 2.2 Force Target

This data is updated by iQuanta approximately every quarter

#### National Public Confidence Measure

|              | Dec 08 |
|--------------|--------|
| Hampshire    | 47.8%  |
| MSG position | 4 of 8 |
| MSG average  | 47.2%  |

Note: This data is based on 'The police and local council are dealing with the anti-social behaviour and crime issues that matter in this area'

Note: The Home Office has set a target to achieve a 12% improvement by 2012 against the baseline of

Note: This year's required improvement is 4%

#### Local Confidence Survey Data

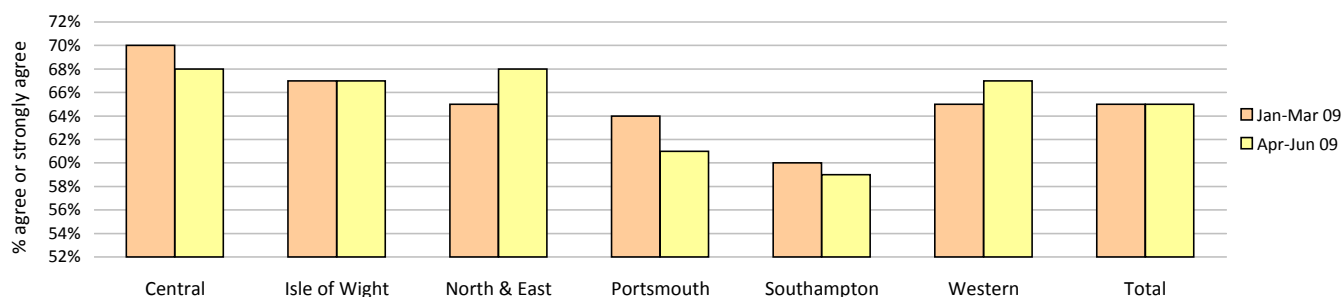
Figures relate to the percentage of respondents who agree or strongly agree with the question

Hampshire's local surveys have a confidence level of +/-4%. This means that changes of less than 4% may not reflect a real change in performance

These data will be updated on a quarterly basis with the next data available in the June profile

#### The police and local council are dealing with the anti-social behaviour and crime issues that matter in this area

|                      | Central | Isle of Wight | North & East | Portsmouth | Southampton | Western | Total | No. Surveys |
|----------------------|---------|---------------|--------------|------------|-------------|---------|-------|-------------|
| January - March 2009 | 70%     | 67%           | 65%          | 64%        | 60%         | 65%     | 65%   | 3594        |
| April - June 2009    | 68%     | 67%           | 68%          | 61%        | 59%         | 67%     | 65%   | 3591        |



#### The police are dealing with the things that matter locally

|                   | Central | Isle of Wight | North & East | Portsmouth | Southampton | Western | Total | No. Surveys |
|-------------------|---------|---------------|--------------|------------|-------------|---------|-------|-------------|
| April - June 2009 | 71%     | 69%           | 66%          | 63%        | 65%         | 70%     | 67%   | 3591        |



#### Overall satisfaction (user satisfaction survey results)

SPI 1.1 Force Target

Rolling 12 months data relates to: Jul 08 - Jun 09; rolling 3 months data relates to Apr 09 - Jun 09

Overall satisfaction includes burglary, vehicle crime, violent crime and RTCs

| Target 65%        | Central | Isle of Wight | North & East | Portsmouth | Southampton | Western | Total | No. Surveys |
|-------------------|---------|---------------|--------------|------------|-------------|---------|-------|-------------|
| Rolling 12 months | 66%     | 72%           | 63%          | 65%        | 61%         | 66%     | 65%   | 7533        |
| Rolling 3 months  | 64%     | 61%           | 59%          | 61%        | 58%         | 64%     | 61%   | 2205        |

#### Being kept informed (user satisfaction survey results)

Pledge point 9

Rolling 12 months data relates to: Jul 08 - Jun 09; rolling 3 months data relates to Apr 09 - Jun 09

Being kept informed includes burglary, vehicle crime, violent crime and RTCs

|                   | Central | Isle of Wight | North & East | Portsmouth | Southampton | Western | Total | No. Surveys |
|-------------------|---------|---------------|--------------|------------|-------------|---------|-------|-------------|
| Rolling 12 months | 55%     | 61%           | 52%          | 53%        | 53%         | 56%     | 54%   | 7246        |
| Rolling 3 months  | 55%     | 57%           | 52%          | 51%        | 51%         | 56%     | 53%   | 2111        |

## Providing an excellent service

### Comparative satisfaction of minority ethnic groups

SPI 1.3

Data relates to interviews which took place Jul 08 - Jun 09

These figures are for overall satisfaction for burglary, vehicle crime, violent crime & RTCs; it excludes racist incidents

|                 | Completely and very satisfied | Completely, very and fairly satisfied |
|-----------------|-------------------------------|---------------------------------------|
| White           | 65.5%                         | 84.1%                                 |
| Minority Ethnic | 53.1%                         | 77.0%                                 |

### Satisfaction of victims of racist incidents

SPI 1.2

These figures relate to interviews which took place Jul 08 - Jun 09; these will be updated quarterly

Racist incident overall satisfaction = % completely or very satisfied

|                   | Central | Isle of Wight | North & East | Portsmouth | Southampton | Western | Total |
|-------------------|---------|---------------|--------------|------------|-------------|---------|-------|
| %                 | 67%     | 67%           | 51%          | 57%        | 57%         | 50%     | 56%   |
| Number of surveys | 24      | 3             | 35           | 28         | 35          | 24      | 149   |

### MSG information for user satisfaction

iQuanta data for MSG for the 12 months up to December 2008

#### Vehicle crime

|                 |     |
|-----------------|-----|
| Ease of contact | 2/8 |
| Actions taken   | 4/8 |
| Follow up       | 4/8 |
| Treatment       | 4/8 |
| OVERALL         | 5/8 |

#### Burglary

|                 |     |
|-----------------|-----|
| Ease of contact | 2/8 |
| Actions taken   | 2/8 |
| Follow up       | 1/8 |
| Treatment       | 3/8 |
| OVERALL         | 3/8 |

#### Violent crime

|                 |     |
|-----------------|-----|
| Ease of contact | 1/8 |
| Actions taken   | 5/8 |
| Follow up       | 6/8 |
| Treatment       | 5/8 |
| OVERALL         | 5/8 |

#### RTC

|                 |     |
|-----------------|-----|
| Ease of contact | 1/8 |
| Actions taken   | 2/8 |
| Follow up       | 3/8 |
| Treatment       | 2/8 |
| OVERALL         | 2/8 |

#### All users (excluding racist incidents)

|                 |     |
|-----------------|-----|
| Ease of contact | 2/8 |
| Actions taken   | 4/8 |
| Follow up       | 3/8 |
| Treatment       | 3/8 |
| OVERALL         | 3/8 |

### Responding to victims of crime

Pledge Point 9

Hampshire Constabulary has always valued victim care. With the introduction of the Policing Pledge, this section will be used not only to inform how we manage our victims of crime, but our progress and actions that relate to the Pledge.

#### Summary results of Dip-sample Victim Code Compliance checks

(latest month for available data followed by YTD)

% where victim was informed within 5 days of an investigation being closed

|          | Central | Isle of Wight | North & East | Portsmouth | Southampton | Western | Crime | Total |
|----------|---------|---------------|--------------|------------|-------------|---------|-------|-------|
| May 2009 | 100%    | 100%          | 100%         | 100%       | 100%        | 95%     | 100%  | 99%   |
| YTD      | 100%    | 100%          | 100%         | 100%       | 100%        | 98%     | 100%  | 100%  |

% where the victim has been updated on a monthly basis (if applicable)

|          | Central | Isle of Wight | North & East | Portsmouth | Southampton | Western | Crime | Total |
|----------|---------|---------------|--------------|------------|-------------|---------|-------|-------|
| May 2009 | 100%    | 95%           | 100%         | 100%       | 100%        | 100%    | 100%  | 99%   |
| YTD      | 100%    | 95%           | 88%          | 100%       | 100%        | 100%    | 100%  | 98%   |

% where the victim was notified upon filing (if applicable)

|          | Central | Isle of Wight | North & East | Portsmouth | Southampton | Western | Crime | Total |
|----------|---------|---------------|--------------|------------|-------------|---------|-------|-------|
| May 2009 | 100%    | 95%           | 95%          | 100%       | 100%        | 100%    | 100%  | 99%   |
| YTD      | 100%    | 98%           | 90%          | 100%       | 100%        | 98%     | 100%  | 98%   |

Note: Victim Code Compliance data is published one month in arrears

Note: Absence of data for Operations OCU - the only crime investigations that are retained for resolution by 8 OCU officers are public order or drug offences where the victim is 'The State'. Other crimes are transferred to 'TO' OCUs for any further investigation required. Road traffic collisions resulting in death could be included but this is a small sample. The option to dip-sample other RTCs (minor and serious injury) for contact with injured or aggrieved parties could be used but these are not within the requirements of the Victims' Code. This would only include RPU in the sample and not other 8 OCU teams.

## Providing an excellent service

### Victim support status for crimes

| YTD to June 2009                | Central | Isle of Wight | North & East | Portsmouth | Southampton | Western | Total  | Total % |
|---------------------------------|---------|---------------|--------------|------------|-------------|---------|--------|---------|
| Victim informed of VSS accepted | 809     | 224           | 759          | 580        | 1133        | 655     | 4160   | 10.42%  |
| Victim informed of VSS declined | 5459    | 1539          | 4506         | 3504       | 4802        | 4078    | 23888  | 59.85%  |
| VSS aware                       | 289     | 62            | 131          | 60         | 82          | 336     | 960    | 2.41%   |
| Victimless crime                | 1954    | 789           | 1805         | 1897       | 1770        | 1714    | 9929   | 24.88%  |
| Not stated                      | 43      | 49            | 290          | 258        | 194         | 140     | 974    | 2.44%   |
| Total crimes                    | 8554    | 2663          | 7491         | 6299       | 7981        | 6923    | 39911  | N/A     |
| % referred                      | 12.84%  | 10.74%        | 11.88%       | 10.16%     | 15.22%      | 14.31%  | 12.83% | N/A     |

| Month of June 2009              | Central | Isle of Wight | North & East | Portsmouth | Southampton | Western | Total  | Total % |
|---------------------------------|---------|---------------|--------------|------------|-------------|---------|--------|---------|
| Victim informed of VSS accepted | 277     | 56            | 243          | 168        | 371         | 212     | 1327   | 9.90%   |
| Victim informed of VSS declined | 1776    | 600           | 1418         | 1103       | 1545        | 1322    | 7764   | 57.94%  |
| VSS aware                       | 98      | 33            | 48           | 14         | 26          | 83      | 302    | 2.25%   |
| Victimless crime                | 608     | 413           | 610          | 598        | 610         | 584     | 3423   | 25.55%  |
| Not stated                      | 41      | 30            | 160          | 110        | 120         | 122     | 583    | 4.35%   |
| Total crimes                    | 2800    | 1132          | 2479         | 1993       | 2672        | 2323    | 13399  | N/A     |
| % referred                      | 13.39%  | 7.86%         | 11.74%       | 9.13%      | 14.86%      | 12.70%  | 12.16% | N/A     |

### Letters of appreciation

|              | Central   | Isle of Wight | North & East | Portsmouth | Southampton | Western   | Firearms Licensing | Operations | Chief Constable | Total      |
|--------------|-----------|---------------|--------------|------------|-------------|-----------|--------------------|------------|-----------------|------------|
| April 2009   | 9         | 5             | 13           | 27         | 0           | 5         | 1                  | 13         | 10              | 83         |
| May 2009     | 10        | 11            | 13           | 0          | 3           | 11        | 3                  | 6          | 0               | 57         |
| <b>Total</b> | <b>19</b> | <b>16</b>     | <b>26</b>    | <b>27</b>  | <b>3</b>    | <b>16</b> | <b>4</b>           | <b>19</b>  | <b>10</b>       | <b>140</b> |

Note: These figures are published one month in arrears

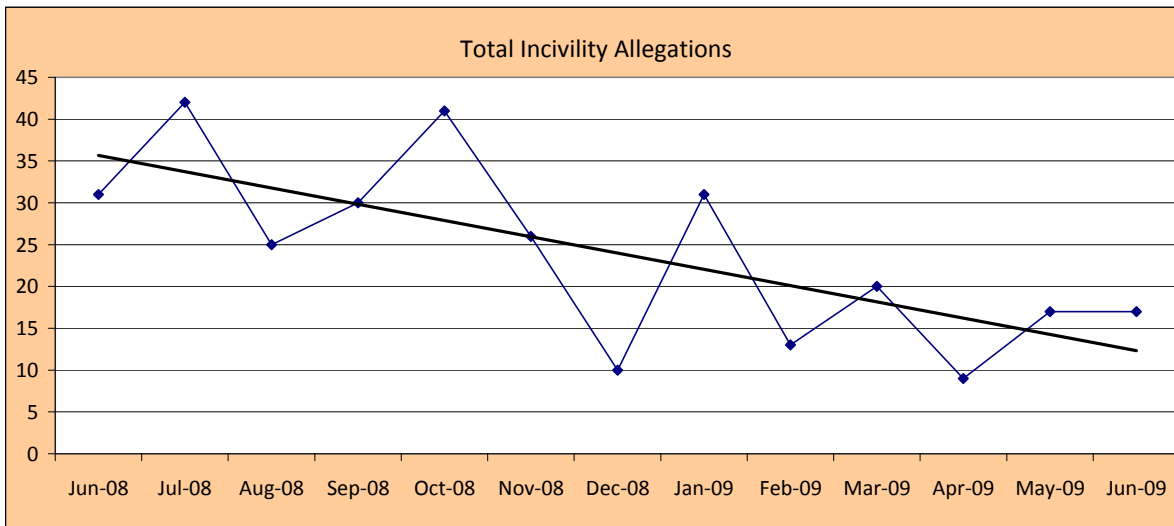
### Reports of incivility

Pledge Point 10

|              | Central   | Isle of Wight | North & East | Portsmouth | Southampton | Western  | Crime    | Operations | Other    | Total     |
|--------------|-----------|---------------|--------------|------------|-------------|----------|----------|------------|----------|-----------|
| April 2009   | 2         | 3             | 1            | 3          | 0           | 2        | 0        | 6          | 0        | 17        |
| May 2009     | 2         | 4             | 5            | 1          | 2           | 3        | 0        | 1          | 1        | 19        |
| June 2009    | 7         | 2             | 1            | 0          | 0           | 3        | 0        | 4          | 0        | 17        |
| <b>Total</b> | <b>11</b> | <b>9</b>      | <b>7</b>     | <b>4</b>   | <b>2</b>    | <b>8</b> | <b>0</b> | <b>11</b>  | <b>1</b> | <b>53</b> |

NOTE: OCU Complaints totals may include complaints regarding officers who are serving within the area but are not located at that OCU

NOTE: Data/figures may change due to additional or new information and there may be multiple allegations per complaint



This graph shows the downward trend for the volume of incivility allegations. The "Linear (incivility)" shows the trajectory of this downward trend

### Allegations and their resolutions

Data for June 2009

|                         |            |
|-------------------------|------------|
| Locally resolved by OCU | 100        |
| Locally resolved by PSD | 23         |
| Withdrawn               | 42         |
| Dispensed by IPCC       | 3          |
| Unsubstantiated         | 26         |
| Substantiated           | 2          |
| <b>Total</b>            | <b>196</b> |

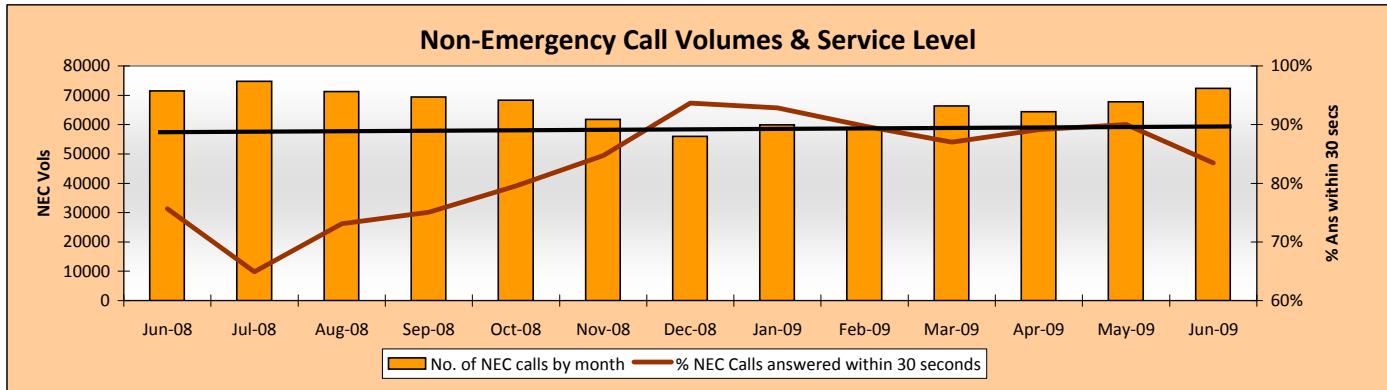
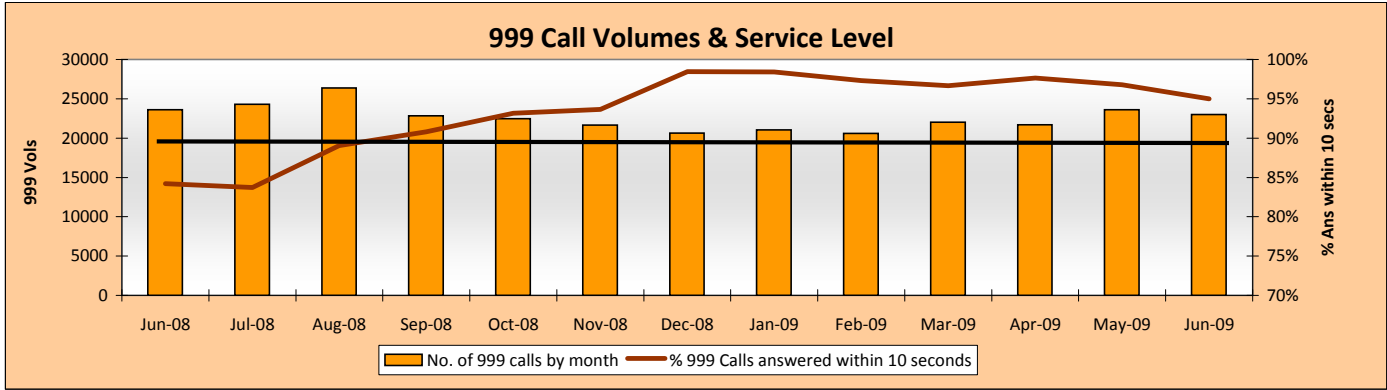
Note: Due to a backlog in finalising local resolution complaints, there is no performance data for local resolution for May 2009

# Providing an excellent service

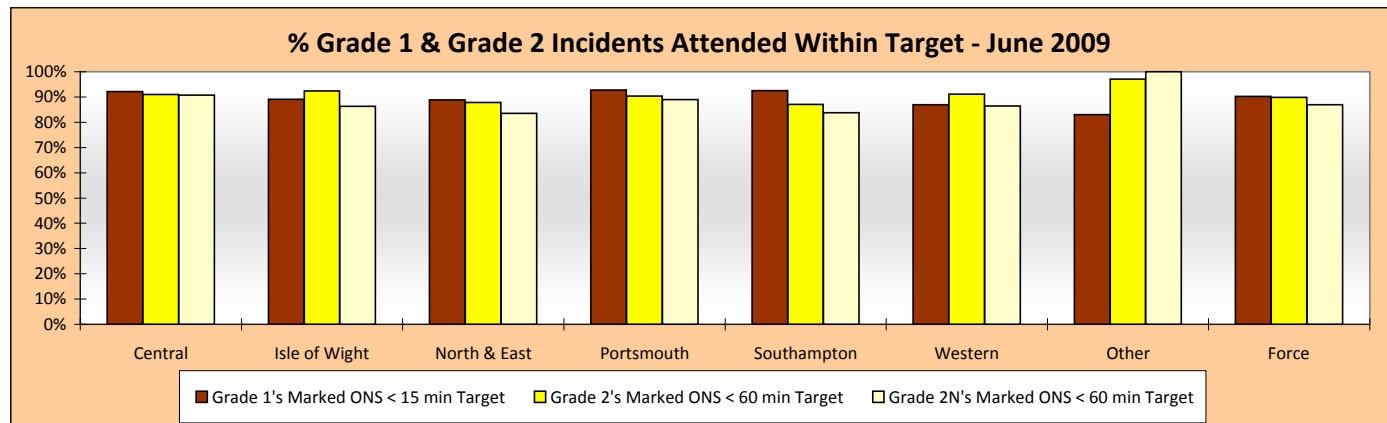
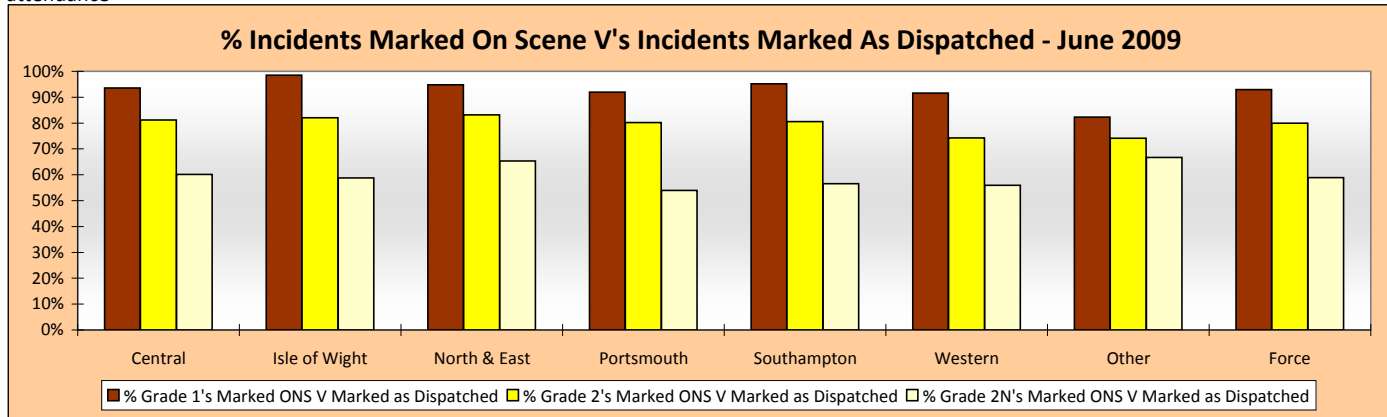
## Responding to public contact

Pledge Points 5 & 6

**Call Volumes:** Target is to answer 90% of 999 calls within 10 seconds and 90% of Non-Emergency calls within 30 seconds



**Officers Attended Within Target:** This is the time from an incident being created to the 1st officer being marked on scene on Altaris. The % of officers attending within target is based on the number of incidents marked on scene within target vs. the number of incidents marked on scene. If an incident is marked as having an officer dispatched, but is then subsequently not marked as On Scene, these incidents are excluded from the % attendance

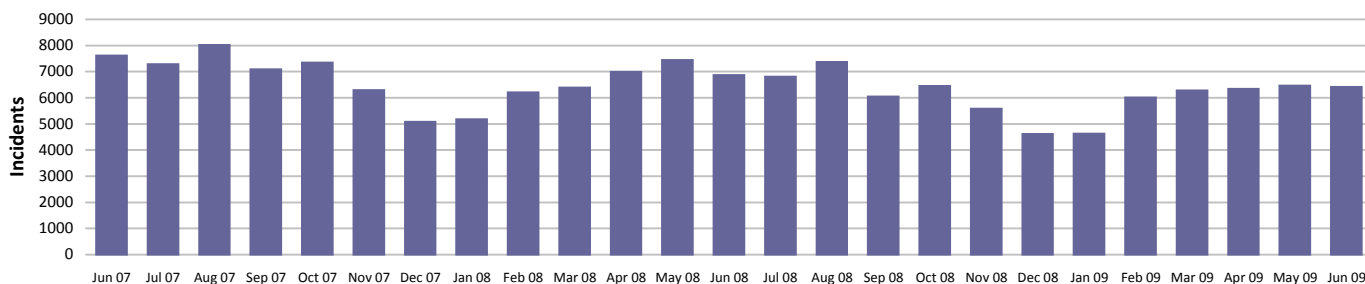


# An active presence in every neighbourhood

## Rowdy & nuisance behaviour

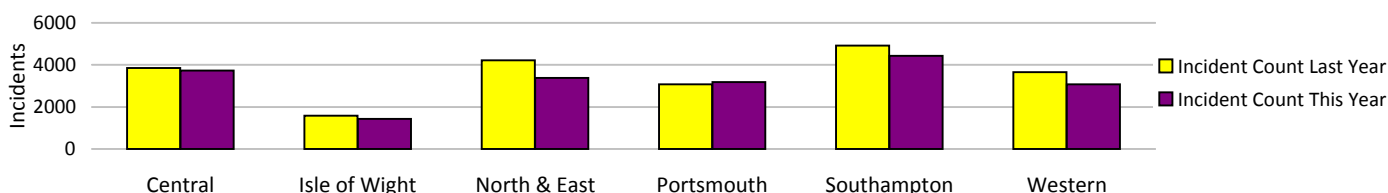
Force Target

This year the decision has been made to use RMS as the source of this data, as opposed to the NSIR return data (the figures published in the 2008/2009 Force Performance Summary used the NSIR data)



| Incidents                  | Central | Isle of Wight | North & East | Portsmouth  | Southampton | Western | Total         |
|----------------------------|---------|---------------|--------------|-------------|-------------|---------|---------------|
| <b>YTD Incidents</b>       | 3726    | 1431          | 3380         | <b>3177</b> | 4431        | 3082    | <b>19227</b>  |
| YTD Target                 | 3466    | 1334          | 3614         | 2854        | 4408        | 3050    | <b>18725</b>  |
| <b>YTD 08/09 Incidents</b> | 3858    | 1581          | 4223         | 3075        | 4925        | 3649    | <b>21311</b>  |
| This month                 | 1234    | 491           | 1156         | 1087        | 1395        | 1055    | <b>6418</b>   |
| % change from 08/09        | -3.42%  | -9.49%        | -19.96%      | 3.32%       | -10.03%     | -15.54% | <b>-9.78%</b> |

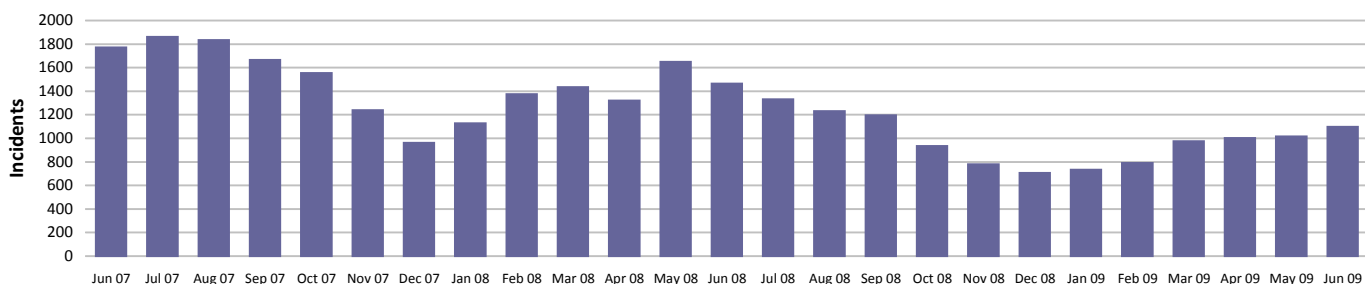
Rowdy & nuisance behaviour relates to occurrence types: Inappropriate use of Fireworks, Rowdy & Inconsiderate, Substance Misuse and Street Drinking



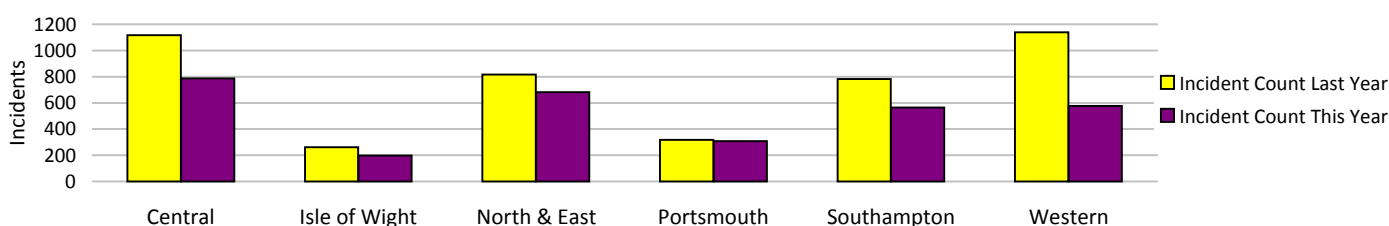
## Vehicle nuisance/inappropriate vehicle use

Force Target

This year the decision has been made to use RMS as the source of this data, as opposed to the NSIR return data (the figures published in the 2008/2009 Force Performance Summary used the NSIR data)



| Incidents                  | Central | Isle of Wight | North & East | Portsmouth | Southampton | Western | Total          |
|----------------------------|---------|---------------|--------------|------------|-------------|---------|----------------|
| <b>YTD Incidents</b>       | 787     | 199           | 683          | 308        | 564         | 577     | <b>3118</b>    |
| YTD Target                 | 868     | 249           | 759          | 322        | 705         | 830     | <b>3732</b>    |
| <b>YTD 08/09 Incidents</b> | 1118    | 261           | 817          | 318        | 781         | 1138    | <b>4433</b>    |
| This month                 | 282     | 50            | 255          | 137        | 176         | 198     | <b>1098</b>    |
| % change from 08/09        | -29.61% | -23.75%       | -16.40%      | -3.14%     | -27.78%     | -49.30% | <b>-29.66%</b> |



## An active presence in every neighbourhood

### Safer Neighbourhood Teams (SNT)

Policing pledge 3

| Abstractions | Central | Isle of Wight | North & East | Portsmouth | Southampton | Western | Total |
|--------------|---------|---------------|--------------|------------|-------------|---------|-------|
| April 2009   | 3.02%   | 2.32%         | 3.16%        | 3.80%      | 1.63%       | 3.30%   |       |
| May 2009     | 3.33%   | 2.95%         | 2.98%        | 3.01%      | 1.88%       | 2.83%   | 2.86% |
| June 2009    | 3.16%   | 1.15%         | 2.54%        | 4.62%      | 2.77%       | 3.40%   | 3.05% |

Target = SNT visible & accessible at least 80% of time (maximum 20% abstractions). This data relates to information from CARMS.

Community liaison data is being developed and will be available in June 2009

#### Data for June 2009

|                  | Years         | Constable  | Sergeant   | Inspector | PCSOs      | Total      | %           |
|------------------|---------------|------------|------------|-----------|------------|------------|-------------|
| Central OCU      | 0-1           | 39         | 12         | 2         | 14         | 67         | 32%         |
|                  | 1-2           | 27         | 7          | 3         | 17         | 54         | 26%         |
|                  | 2-5           | 30         | 10         | 5         | 44         | 89         | 32%         |
|                  | <b>Totals</b> | <b>96</b>  | <b>29</b>  | <b>10</b> | <b>75</b>  | <b>210</b> | <b>100%</b> |
| IOW OCU          | 0-1           | 15         | 2          | 1         | 6          | 24         | 34%         |
|                  | 1-2           | 7          | 1          | 1         | 5          | 14         | 20%         |
|                  | 2-5           | 8          | 6          | 0         | 18         | 32         | 46%         |
|                  | <b>Totals</b> | <b>30</b>  | <b>9</b>   | <b>2</b>  | <b>29</b>  | <b>70</b>  | <b>100%</b> |
| North & East OCU | 0-1           | 24         | 6          | 6         | 20         | 56         | 33%         |
|                  | 1-2           | 12         | 7          | 6         | 16         | 41         | 24%         |
|                  | 2-5           | 40         | 4          | 0         | 30         | 74         | 43%         |
|                  | <b>Totals</b> | <b>76</b>  | <b>17</b>  | <b>12</b> | <b>66</b>  | <b>171</b> | <b>100%</b> |
| Portsmouth OCU   | 0-1           | 13         | 7          | 1         | 18         | 39         | 31%         |
|                  | 1-2           | 12         | 6          | 0         | 3          | 21         | 17%         |
|                  | 2-5           | 33         | 2          | 3         | 29         | 67         | 53%         |
|                  | <b>Totals</b> | <b>58</b>  | <b>15</b>  | <b>4</b>  | <b>50</b>  | <b>127</b> | <b>100%</b> |
| Southampton OCU  | 0-1           | 15         | 1          | 2         | 25         | 43         | 30%         |
|                  | 1-2           | 15         | 2          | 2         | 10         | 29         | 20%         |
|                  | 2-5           | 32         | 11         | 3         | 26         | 72         | 50%         |
|                  | <b>Totals</b> | <b>62</b>  | <b>14</b>  | <b>7</b>  | <b>61</b>  | <b>144</b> | <b>100%</b> |
| Western OCU      | 0-1           | 25         | 7          | 3         | 23         | 58         | 35%         |
|                  | 1-2           | 10         | 4          | 1         | 12         | 27         | 16%         |
|                  | 2-5           | 43         | 8          | 2         | 26         | 79         | 48%         |
|                  | <b>Totals</b> | <b>78</b>  | <b>19</b>  | <b>6</b>  | <b>61</b>  | <b>164</b> | <b>100%</b> |
| Force            | 0-1           | 131        | 35         | 15        | 106        | 287        | 32%         |
|                  | 1-2           | 83         | 27         | 13        | 63         | 186        | 21%         |
|                  | 2-5           | 186        | 41         | 13        | 173        | 413        | 47%         |
|                  | <b>Totals</b> | <b>400</b> | <b>103</b> | <b>41</b> | <b>342</b> | <b>886</b> | <b>100%</b> |

#### SNT establishment and strength by OCU - Police

|                      | Central | Isle of Wight | North & East | Portsmouth | Southampton | Western | Total        |
|----------------------|---------|---------------|--------------|------------|-------------|---------|--------------|
| <b>Establishment</b> | 145     | 50            | 110          | 83         | 80          | 50      | <b>518</b>   |
| <b>Strength</b>      | 127.7   | 38.6          | 102.2        | 75.65      | 80.7        | 99.45   | <b>524.3</b> |
| <b>Vacancies</b>     | 17.3    | 11.4          | 7.8          | 7.35       | -0.7        | -49.45  | <b>-6.3</b>  |

#### SNT establishment and strength by OCU - PCSOs

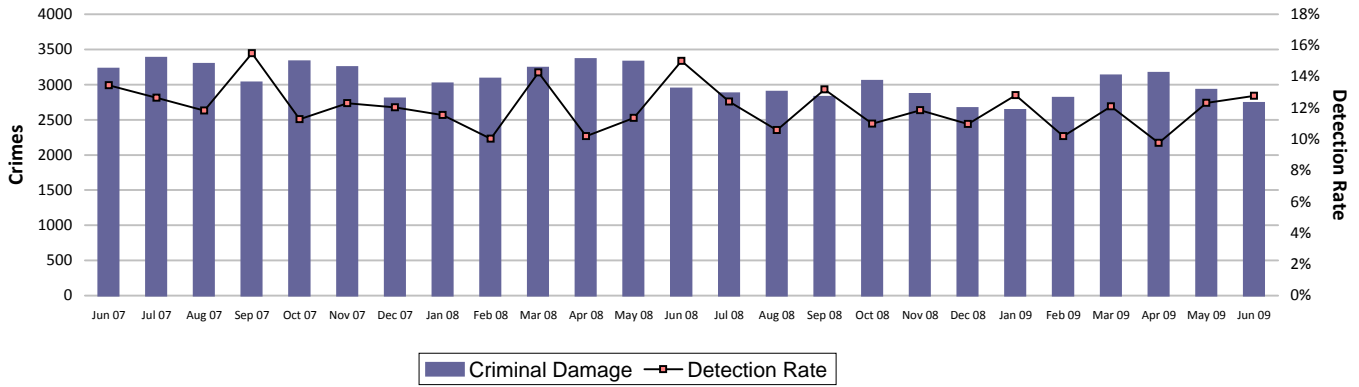
|                      | Central | Isle of Wight | North & East | Portsmouth | Southampton | Western | Total        |
|----------------------|---------|---------------|--------------|------------|-------------|---------|--------------|
| <b>Establishment</b> | 74      | 28            | 67           | 50         | 59          | 59      | <b>337</b>   |
| <b>Strength</b>      | 75      | 28.09         | 65.4         | 49.12      | 60.35       | 59.94   | <b>337.9</b> |
| <b>Vacancies</b>     | -1      | -0.09         | 1.6          | 0.88       | -1.35       | -0.94   | <b>-0.9</b>  |

Please be advised that the data has been supplied using the position start date within Delphi for both Police Community Support Officers and SNT PC/SGT/Inspectors. Therefore, the service data will only capture the length of service an Officer/PCSO has carried out in his current post at the date of the report (30/06/2009). This will not take into account any previous service in SNT in another OCU or a different location which has resulted in a post location change.

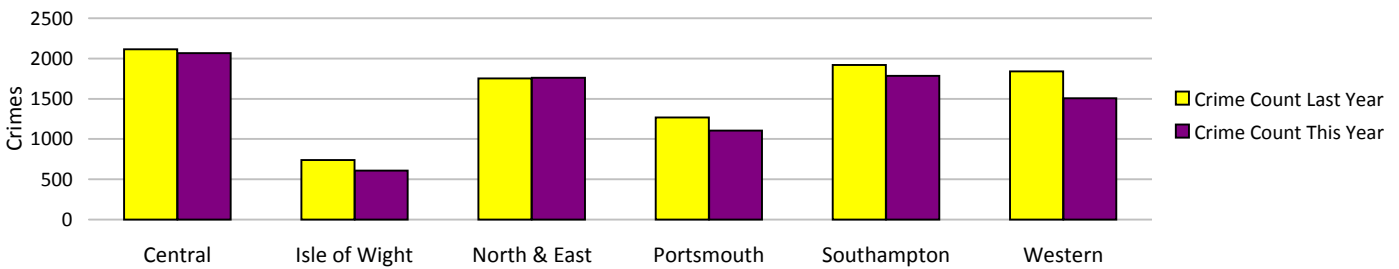
# An active presence in every neighbourhood

## Criminal damage

Force Target

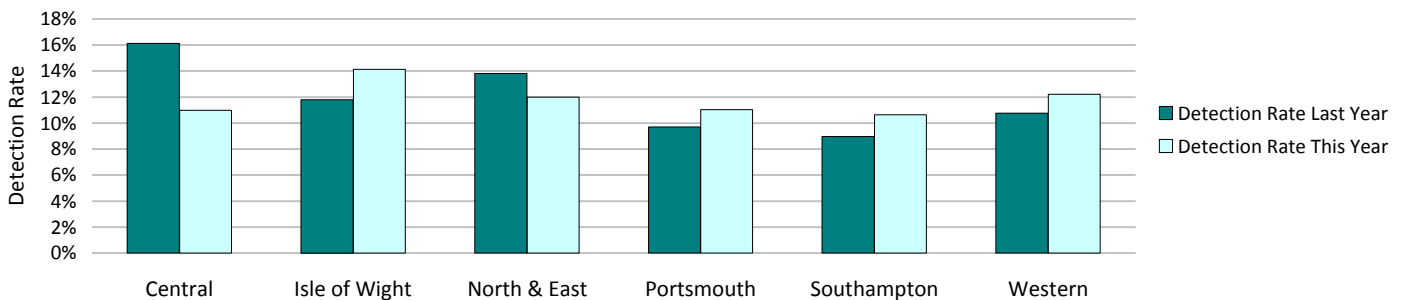


| Crimes                  | Central         | Isle of Wight  | North & East    | Portsmouth      | Southampton     | Western        | Total         |
|-------------------------|-----------------|----------------|-----------------|-----------------|-----------------|----------------|---------------|
| <b>YTD Crimes</b>       | 2065            | 608            | 1761            | 1106            | 1786            | 1506           | <b>8832</b>   |
| YTD Target              | 1882            | 626            | 1640            | 1157            | 1654            | 1577           | 8535          |
| <b>YTD 08/09 Crimes</b> | 2115            | 738            | 1751            | 1268            | 1921            | 1840           | <b>9633</b>   |
| This month              | 681             | 205            | 550             | 305             | 543             | 454            | <b>2738</b>   |
| % change from 08/09     | -2.36%          | -17.62%        | 0.57%           | -12.78%         | -7.03%          | -18.15%        | <b>-8.32%</b> |
| MSG position            | <b>14 of 15</b> | <b>7 of 15</b> | <b>14 of 15</b> | <b>13 of 15</b> | <b>15 of 15</b> | <b>9 of 15</b> | <b>8 of 8</b> |
| OCU actual              | 4.65            | 4.27           | 4.26            | 6.23            | 8.50            | 3.88           | <b>5.01</b>   |
| MSG average             | 3.90            | 4.42           | 3.69            | 5.50            | 5.92            | 3.82           | <b>4.13</b>   |



| Detections                  | Central        | Isle of Wight  | North & East    | Portsmouth      | Southampton     | Western        | Total         |
|-----------------------------|----------------|----------------|-----------------|-----------------|-----------------|----------------|---------------|
| <b>YTD Detection Rate</b>   | 10.99%         | 14.14%         | 11.98%          | 11.03%          | 10.64%          | 12.22%         | <b>11.55%</b> |
| This month                  | 10.87%         | 16.10%         | 14.18%          | 10.82%          | 12.52%          | 14.10%         | <b>12.78%</b> |
| <b>YTD 08/09 Detections</b> | 16.12%         | 11.79%         | 13.82%          | 9.70%           | 8.95%           | 10.76%         | <b>12.07%</b> |
| MSG position                | <b>8 of 15</b> | <b>9 of 15</b> | <b>12 of 15</b> | <b>12 of 15</b> | <b>13 of 15</b> | <b>9 of 15</b> | <b>7 of 8</b> |
| OCU actual                  | 12.86%         | 14.15%         | 11.81%          | 11.09%          | 9.71%           | 12.52%         | <b>11.78%</b> |
| MSG average                 | 13.38%         | 15.24%         | 14.04%          | 11.92%          | 12.26%          | 13.60%         | <b>14.34%</b> |

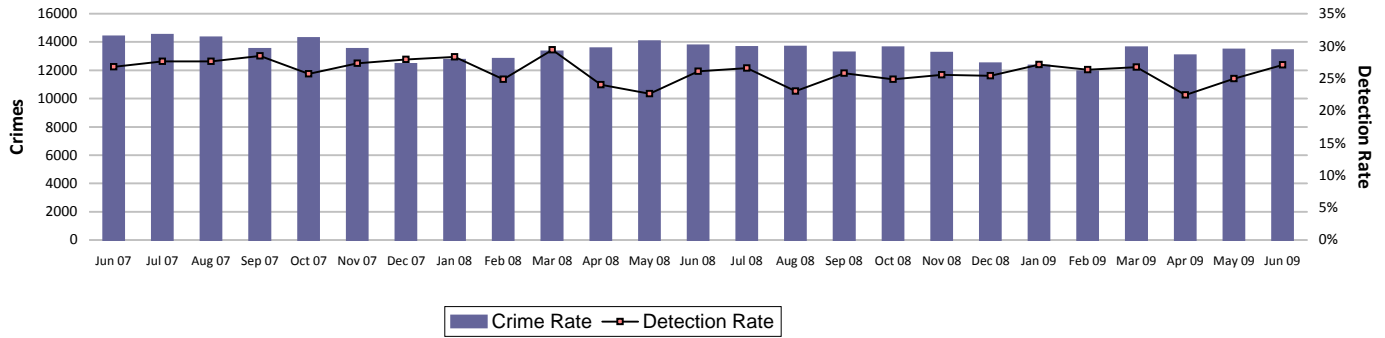
Note: Detections refer to Sanction Detections ONLY



# Catching criminals and managing offenders

## All crime

Force Target



| Crimes                  | Central         | Isle of Wight | North & East | Portsmouth      | Southampton     | Western | Total         |
|-------------------------|-----------------|---------------|--------------|-----------------|-----------------|---------|---------------|
| <b>YTD Crimes</b>       | 8584            | 2660          | 7490         | 6296            | 7984            | 6942    | <b>39956</b>  |
| YTD Target              | 8258            | 2642          | 7672         | 6316            | 8499            | 7135    | <b>40522</b>  |
| <b>YTD 08/09 Crimes</b> | 8514            | 3028          | 7566         | 6414            | 8582            | 7281    | <b>41385</b>  |
| This month              | 2807            | 1129          | 2478         | 1990            | 2677            | 2342    | <b>13423</b>  |
| % change from 08/09     | 0.82%           | -12.15%       | -1.00%       | -1.84%          | -6.97%          | -4.66%  | <b>-3.45%</b> |
| MSG position            | <b>14 of 15</b> | 4 of 15       | 10 of 15     | <b>13 of 15</b> | <b>14 of 15</b> | 7 of 15 | <b>6 of 8</b> |
| MSG actual              | 19.76           | 16.20         | 17.66        | 33.03           | 35.84           | 16.94   | <b>21.81</b>  |
| MSG average             | 17.87           | 18.12         | 17.03        | 27.68           | 28.88           | 16.51   | <b>19.53</b>  |



| Detections                  | Central  | Isle of Wight  | North & East | Portsmouth     | Southampton | Western  | Total         |
|-----------------------------|----------|----------------|--------------|----------------|-------------|----------|---------------|
| <b>YTD Detection Rate</b>   | 23.25%   | 28.87%         | 25.06%       | 26.03%         | 24.55%      | 24.21%   | <b>24.83%</b> |
| Detection Targets           | 25.00%   | 30.00%         | 25.50%       | 25.50%         | 25.00%      | 25.00%   | <b>25.00%</b> |
| <b>YTD 08/09 Detections</b> | 24.75%   | 29.03%         | 26.00%       | 24.56%         | 22.34%      | 21.71%   | <b>24.23%</b> |
| This month                  | 24.65%   | 31.44%         | 25.18%       | 28.79%         | 28.02%      | 27.24%   | <b>27.06%</b> |
| MSG position                | 12 of 15 | <b>5 of 15</b> | 11 of 15     | <b>5 of 15</b> | 9 of 15     | 12 of 15 | <b>7 of 8</b> |
| MSG actual                  | 23.92%   | 3.01%          | 25.79%       | 26.06%         | 24.12%      | 24.08%   | <b>25.25%</b> |
| MSG average                 | 27.37%   | 30.75%         | 28.13%       | 25.32%         | 26.10%      | 26.83%   | <b>28.40%</b> |

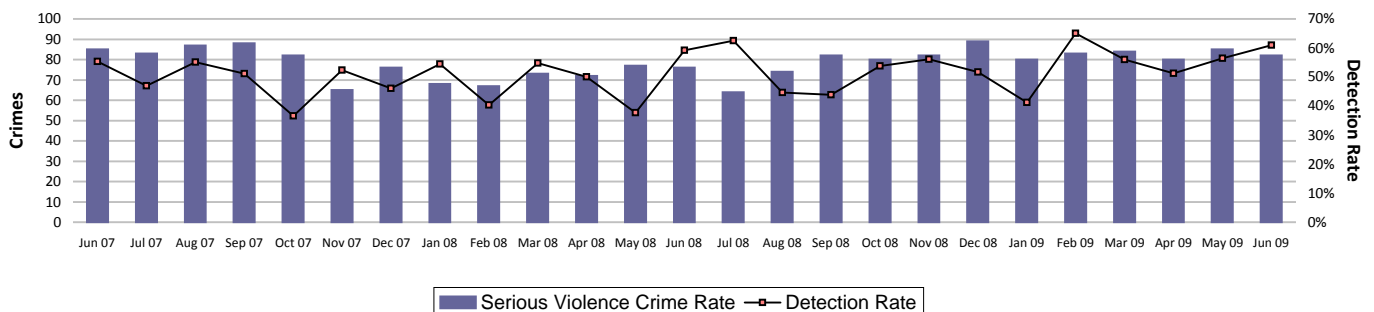
Note: Detections refer to Sanction Detections ONLY



## Serious violent crime

SPI 5.1 Force Target

Serious violent crime consists of crimsec codes 1, 2, 4.1-4.4, 4.6, 4.8, 5A, 5B, 5C, 8F, 8H and 37.1



Note: MSG data is always published a month in arrears. For an explanation of this data, refer to the Summary on page 2

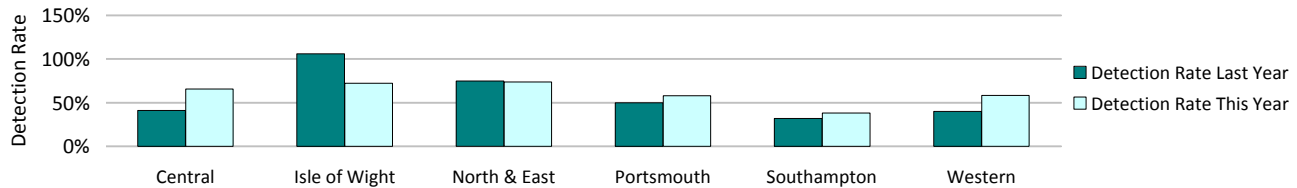
## Catching criminals and managing offenders

| Crimes                  | Central | Isle of Wight | North & East | Portsmouth | Southampton | Western         | Total         |
|-------------------------|---------|---------------|--------------|------------|-------------|-----------------|---------------|
| <b>YTD Crimes</b>       | 38      | <b>18</b>     | <b>38</b>    | 38         | <b>79</b>   | <b>36</b>       | <b>247</b>    |
| YTD Target              | 43      | 16            | 36           | 45         | 59          | 28              | 226           |
| <b>YTD 08/09 Crimes</b> | 66      | 17            | 24           | 38         | 50          | 30              | <b>225</b>    |
| This month              | 16      | 7             | 16           | 14         | 22          | 7               | <b>82</b>     |
| % change from 08/09     | -42.42% | 5.88%         | 58.33%       | 0.00%      | 58.00%      | 20.00%          | <b>9.78%</b>  |
| MSG position            | 2 of 15 | 11 of 15      | 9 of 15      | 3 of 15    | 3 of 15     | <b>13 of 15</b> | <b>7 of 8</b> |
| MSG actual              | 0.07    | 0.17          | 0.10         | 0.21       | 0.21        | 0.18            | <b>0.15</b>   |
| MSG average             | 0.12    | 0.14          | 0.09         | 0.33       | 0.33        | 0.11            | <b>0.13</b>   |



| Detections                  | Central | Isle of Wight | North & East   | Portsmouth | Southampton   | Western        | Total         |
|-----------------------------|---------|---------------|----------------|------------|---------------|----------------|---------------|
| <b>YTD Detection Rate</b>   | 65.79%  | 72.22%        | 73.68%         | 57.89%     | <b>37.97%</b> | 58.33%         | <b>56.28%</b> |
| Detection Targets           | 57.00%  | 60.00%        | 56.00%         | 41.00%     | 45.00%        | 50.00%         | <b>50.00%</b> |
| <b>YTD 08/09 Detections</b> | 40.91%  | 105.88%       | 75.00%         | 50.00%     | 32.00%        | 40.00%         | <b>48.89%</b> |
| This month                  | 56.25%  | 57.14%        | 68.75%         | 42.86%     | 72.73%        | 57.14%         | <b>60.98%</b> |
| MSG position                | 2 of 15 | 3 of 15       | <b>5 of 15</b> | 1 of 15    | 3 of 15       | <b>8 of 15</b> | <b>1 of 8</b> |
| MSG actual                  | 62.35%  | 67.21%        | 58.55%         | 45.88%     | 43.80%        | 53.80%         | <b>52.73%</b> |
| MSG average                 | 52.23%  | 52.50%        | 55.11%         | 37.02%     | 37.86%        | 54.59%         | <b>45.87%</b> |

**Note: Detections refer to Sanction Detections ONLY**



### Serious Violent offences OBTJ

SPI 6.1

Data to March 2009

|  | Recorded Crime |     | Total OBTJs |     | Hampshire |        | Rolling Average |        |
|--|----------------|-----|-------------|-----|-----------|--------|-----------------|--------|
|  | Month          | RA  | Month       | RA  | Month     | RA     | MSG             | E&W    |
| Attempted murder                       | 0              | 10  | 0           | 3   | 0.0%      | 30.0%  | 27.3%           | 21.1%  |
| Death by aggravated vehicle taking     | 0              | 0   | 0           | 0   | 0.0%      | 0.0%   | 400.0%          | 40.0%  |
| Causing death by dangerous driving etc | 3              | 14  | 3           | 13  | 100.0%    | 92.9%  | 72.7%           | 72.4%  |
| Homicide and child destruction         | 1              | 11  | 4           | 24  | 400.0%    | 218.2% | 174.2%          | 116.9% |
| Wounding and GBH without intent        | 108            | 897 | 27          | 215 | 25.0%     | 24.0%  | 24.8%           | 20.2%  |

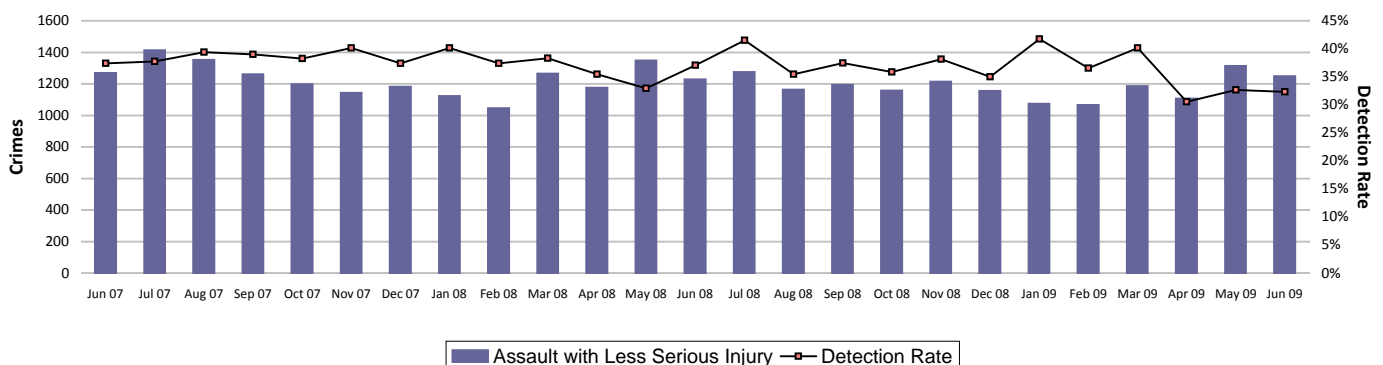
|  | Convictions | Caution | TICs | Cannabis Warning | PNDs |
|--|-------------|---------|------|------------------|------|
| <b>Rolling 12 month Average</b>        |             |         |      |                  |      |
| Attempted murder                       | 3           | 0       | 0    | 0                | 0    |
| Death by aggravated vehicle taking     | 0           | 0       | 0    | 0                | 0    |
| Causing death by dangerous driving etc | 13          | 0       | 0    | 0                | 0    |
| Homicide and child destruction         | 24          | 0       | 0    | 0                | 0    |
| Wounding and GBH without intent        | 210         | 5       | 0    | 0                | 0    |

RA = Rolling Annual  
E&W = England and Wales

### Assault with less serious injury

SPI 5.3 Force Target

Assault with less serious injury consists of crimsec codes 8G and 8J



Note: MSG data is always published a month in arrears. For an explanation of this data, refer to the Summary on page 2

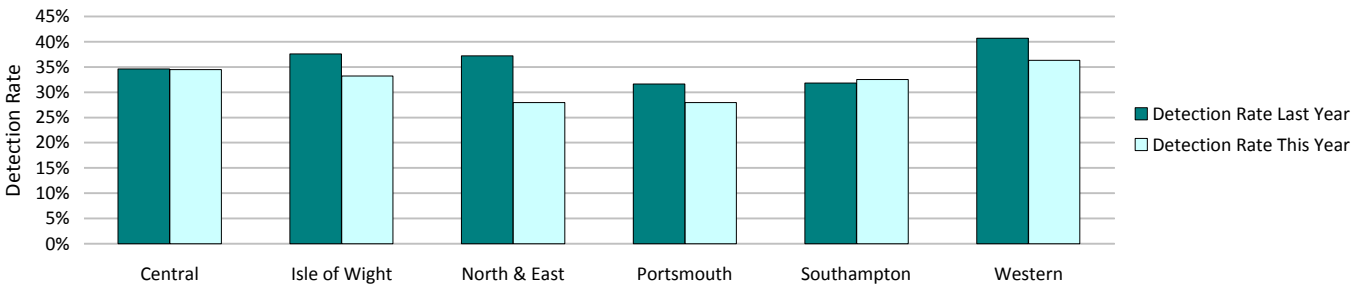
## Catching criminals and managing offenders

| Crimes                  | Central  | Isle of Wight | North & East | Portsmouth | Southampton | Western | Total  |
|-------------------------|----------|---------------|--------------|------------|-------------|---------|--------|
| <b>YTD Crimes</b>       | 731      | 271           | 647          | 659        | 799         | 562     | 3669   |
| YTD Target              | 723      | 242           | 610          | 497        | 810         | 556     | 3439   |
| <b>YTD 08/09 Crimes</b> | 823      | 242           | 645          | 547        | 912         | 582     | 3751   |
| This month              | 262      | 86            | 223          | 201        | 270         | 207     | 1249   |
| % change from 08/09     | -11.18%  | 11.98%        | 0.31%        | 20.48%     | -12.39%     | -3.44%  | -2.19% |
| MSG position            | 12 of 15 | 12 of 15      | 13 of 15     | 14 of 15   | 12 of 15    | 6 of 15 | 8 of 8 |
| MSG actual              | 1.63     | 1.87          | 1.42         | 3.42       | 3.41        | 1.25    | 1.93   |
| MSG average             | 1.31     | 1.75          | 1.25         | 2.52       | 2.58        | 1.32    | 1.58   |



| Detections                  | Central  | Isle of Wight | North & East | Portsmouth | Southampton | Western | Total  |
|-----------------------------|----------|---------------|--------------|------------|-------------|---------|--------|
| <b>YTD Detection Rate</b>   | 34.47%   | 33.21%        | 27.98%       | 27.92%     | 32.54%      | 36.30%  | 31.92% |
| This month                  | 31.68%   | 30.23%        | 25.11%       | 41.29%     | 32.96%      | 32.37%  | 32.35% |
| <b>YTD 08/09 Detections</b> | 34.63%   | 37.60%        | 37.21%       | 31.63%     | 31.80%      | 40.72%  | 35.08% |
| MSG position                | 14 of 15 | 11 of 15      | 12 of 15     | 14 of 15   | 6 of 15     | 4 of 15 | 6 of 8 |
| MSG actual                  | 34.51%   | 42.27%        | 36.21%       | 29.40%     | 38.73%      | 44.07%  | 37.02% |
| MSG average                 | 41.23%   | 45.49%        | 41.73%       | 35.97%     | 35.36%      | 40.87%  | 41.81% |

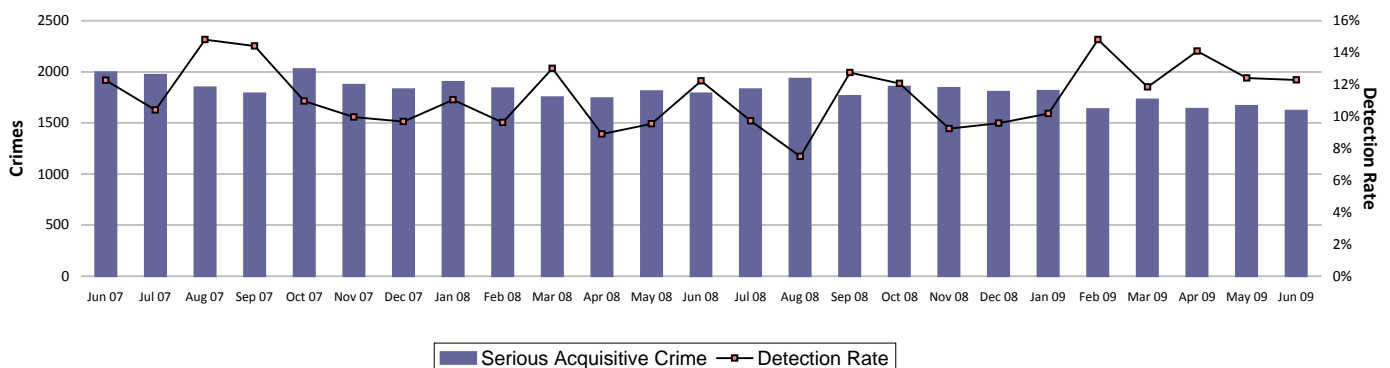
**Note: Detections refer to Sanction Detections ONLY**



### Serious acquisitive crime

SPI 5.2 Force Target

Serious acquisitive crime consists of crimsec codes 28, 29, 34A, 34B, 37/2, 45 and 48

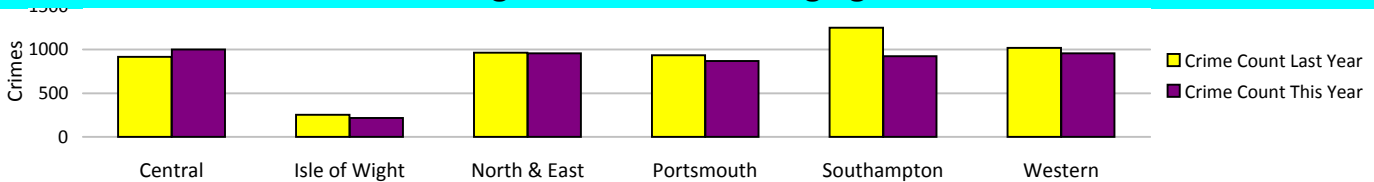


| Crimes                  | Central | Isle of Wight | North & East | Portsmouth | Southampton | Western | Total  |
|-------------------------|---------|---------------|--------------|------------|-------------|---------|--------|
| <b>YTD Crimes</b>       | 1000    | 216           | 956          | 870        | 926         | 959     | 4927   |
| YTD Target              | 1020    | 229           | 1095         | 983        | 1219        | 1038    | 5584   |
| <b>YTD 08/09 Crimes</b> | 918     | 254           | 966          | 934        | 1250        | 1021    | 5343   |
| This month              | 321     | 77            | 331          | 270        | 319         | 302     | 1620   |
| % change from 08/09     | 8.93%   | -14.96%       | -1.04%       | -6.85%     | -25.92%     | -6.07%  | -7.79% |
| MSG position            | 3 of 15 | 2 of 15       | 5 of 15      | 7 of 15    | 3 of 15     | 5 of 15 | 3 of 8 |
| MSG actual              | 2.25    | 1.51          | 2.27         | 4.87       | 4.23        | 2.27    | 2.73   |
| MSG average             | 3.06    | 2.53          | 2.76         | 5.23       | 5.55        | 2.40    | 3.34   |

1500

Note: MSG data is always published a month in arrears. For an explanation of this data, refer to the Summary on page 2

## Catching criminals and managing offenders



### Detections

Target >15%

|                      | Central  | Isle of Wight | North & East | Portsmouth | Southampton | Western | Total  |
|----------------------|----------|---------------|--------------|------------|-------------|---------|--------|
| YTD Detection Rate   | 9.10%    | 21.76%        | 15.90%       | 16.21%     | 8.86%       | 12.93%  | 12.93% |
| This month           | 10.28%   | 28.57%        | 13.60%       | 8.89%      | 10.66%      | 13.58%  | 12.28% |
| YTD 08/09 Detections | 12.09%   | 12.99%        | 10.35%       | 11.35%     | 7.28%       | 10.38%  | 10.24% |
| MSG position         | 10 of 15 | 9 of 15       | 12 of 15     | 4 of 15    | 11 of 15    | 9 of 15 | 5 of 8 |
| MSG actual           | 11.20%   | 14.40%        | 9.54%        | 13.78%     | 10.00%      | 11.26%  | 11.25% |
| MSG average          | 12.77%   | 15.11%        | 12.66%       | 11.43%     | 12.91%      | 12.47%  | 13.28% |

Note: Detections refer to Sanction Detections ONLY



### Serious Acquisitive offences OBTJ

SPI 6.2

Data to March 2009

|                                   | Recorded Crime |       | Total OBTJs |     | Hampshire |       | Rolling Average |       |
|-----------------------------------|----------------|-------|-------------|-----|-----------|-------|-----------------|-------|
|                                   | Month          | RA    | Month       | RA  | Month     | RA    | MSG             | E&W   |
| Aggravated burglary in a dwelling | 7              | 57    | 0           | 13  | 0.0%      | 22.8% | 22.7%           | 23.2% |
| Aggravated vehicle taking         | 21             | 256   | 8           | 201 | 38.1%     | 78.5% | 76.3%           | 71.2% |
| Burglary in a dwelling            | 491            | 5971  | 84          | 920 | 17.1%     | 15.4% | 15.3%           | 14.9% |
| Robbery                           | 109            | 1154  | 16          | 229 | 14.7%     | 19.8% | 20.1%           | 17.6% |
| Theft from a vehicle              | 881            | 11156 | 33          | 330 | 3.8%      | 3.0%  | 7.5%            | 8.7%  |
| Theft of a motor vehicle          | 202            | 2981  | 26          | 371 | 12.9%     | 12.5% | 12.3%           | 12.5% |

|                                   | Convictions | Caution | TICs | Cannabis Warnings | PNDs |
|-----------------------------------|-------------|---------|------|-------------------|------|
| Rolling 12 month Average          |             |         |      |                   |      |
| Aggravated burglary in a dwelling | 12          | 0       | 1    | 0                 | 0    |
| Aggravated vehicle taking         | 178         | 22      | 1    | 0                 | 0    |
| Burglary in a dwelling            | 506         | 34      | 380  | 0                 | 0    |
| Robbery                           | 225         | 1       | 3    | 0                 | 0    |
| Theft from a vehicle              | 179         | 54      | 97   | 0                 | 0    |
| Theft of a motor vehicle          | 302         | 40      | 29   | 0                 | 0    |

RA = Rolling Annual  
E&W = England and Wales

### Serious acquisitive crime breakdown

#### Robbery

| Year to date        | Central | Isle of Wight | North & East | Portsmouth | Southampton | Western | Total  |
|---------------------|---------|---------------|--------------|------------|-------------|---------|--------|
| Crimes              | 17      | 5             | 35           | 77         | 95          | 40      | 269    |
| 08/09 crimes        | 30      | 5             | 31           | 64         | 90          | 38      | 258    |
| % change from 08/09 | -43.33% | 0.00%         | 12.90%       | 20.31%     | 5.56%       | 5.26%   | 4.26%  |
| MSG position        | 3 of 15 | 4 of 15       | 5 of 15      | 6 of 15    | 7 of 15     | 7 of 15 | 3 of 8 |

|                |         |          |          |          |          |         |        |
|----------------|---------|----------|----------|----------|----------|---------|--------|
| Detection rate | 52.94%  | 60.00%   | 45.71%   | 27.27%   | 24.21%   | 15.00%  | 29.00% |
| MSG position   | 1 of 15 | 10 of 15 | 11 of 15 | 11 of 15 | 10 of 15 | 6 of 15 | 4 of 8 |

| June 2009      | Central | Isle of Wight | North & East | Portsmouth | Southampton | Western | Total  |
|----------------|---------|---------------|--------------|------------|-------------|---------|--------|
| Crimes         | 1       | 2             | 15           | 23         | 28          | 12      | 81     |
| Detection rate | 200.00% | 50.00%        | 26.67%       | 13.04%     | 28.57%      | 8.33%   | 23.46% |

#### Dwelling burglary

| Year to date        | Central | Isle of Wight | North & East | Portsmouth | Southampton | Western | Total  |
|---------------------|---------|---------------|--------------|------------|-------------|---------|--------|
| Crimes              | 285     | 73            | 283          | 224        | 266         | 239     | 1370   |
| 08/09 crimes        | 227     | 80            | 286          | 292        | 272         | 259     | 1416   |
| % change from 08/09 | 25.55%  | -8.75%        | -1.05%       | -23.29%    | -2.21%      | -7.72%  | -3.25% |
| MSG position        | 2 of 15 | 2 of 15       | 6 of 15      | 4 of 15    | 3 of 15     | 6 of 15 | 3 of 8 |

|                |         |         |          |         |         |         |        |
|----------------|---------|---------|----------|---------|---------|---------|--------|
| Detection rate | 11.23%  | 19.18%  | 16.25%   | 35.71%  | 10.53%  | 29.29%  | 19.71% |
| MSG position   | 7 of 15 | 5 of 15 | 11 of 15 | 1 of 15 | 7 of 15 | 2 of 15 | 3 of 8 |

Note: MSG data is always published a month in arrears. For an explanation of this data, refer to the Summary on page 2

## Catching criminals and managing offenders

| June 2009      | Central | Isle of Wight | North & East | Portsmouth | Southampton | Western | Total         |
|----------------|---------|---------------|--------------|------------|-------------|---------|---------------|
| Crimes         | 98      | 27            | 99           | 78         | 111         | 65      | <b>478</b>    |
| Detection rate | 15.31%  | 33.33%        | 11.11%       | 5.13%      | 12.61%      | 24.62%  | <b>14.44%</b> |

### Vehicle crime

| Year to date        | Central | Isle of Wight | North & East | Portsmouth | Southampton | Western | Total          |
|---------------------|---------|---------------|--------------|------------|-------------|---------|----------------|
| Crimes              | 698     | 138           | 638          | 569        | 565         | 680     | <b>3288</b>    |
| 08/09 crimes        | 661     | 169           | 649          | 578        | 888         | 724     | <b>3669</b>    |
| % change from 08/09 | 5.60%   | -18.34%       | -1.69%       | -1.56%     | -36.37%     | -6.08%  | <b>-10.38%</b> |
| MSG position        | 6 of 15 | 2 of 15       | 4 of 15      | 11 of 15   | 5 of 15     | 7 of 15 | <b>2 of 8</b>  |

|                |          |         |          |         |          |          |               |
|----------------|----------|---------|----------|---------|----------|----------|---------------|
| Detection rate | 7.16%    | 21.74%  | 14.11%   | 7.03%   | 5.49%    | 7.06%    | <b>8.79%</b>  |
| MSG position   | 11 of 15 | 9 of 15 | 10 of 15 | 8 of 15 | 11 of 15 | 14 of 15 | <b>7 of 8</b> |

| June 2009      | Central | Isle of Wight | North & East | Portsmouth | Southampton | Western | Total         |
|----------------|---------|---------------|--------------|------------|-------------|---------|---------------|
| Crimes         | 222     | 48            | 217          | 169        | 180         | 225     | <b>1061</b>   |
| Detection rate | 7.21%   | 25.00%        | 13.82%       | 10.06%     | 6.67%       | 10.67%  | <b>10.46%</b> |

### Theft of a motor vehicle

| Year to date   | Central | Isle of Wight | North & East | Portsmouth | Southampton | Western | Total         |
|----------------|---------|---------------|--------------|------------|-------------|---------|---------------|
| Crimes         | 181     | 42            | 181          | 91         | 151         | 116     | <b>762</b>    |
| MSG position   | 4 of 15 | 4 of 15       | 9 of 15      | 1 of 15    | 5 of 15     | 1 of 15 | <b>1 of 8</b> |
| Detection rate | 16.02%  | 45.24%        | 17.68%       | 23.08%     | 5.96%       | 19.83%  | <b>17.45%</b> |
| MSG position   | 4 of 15 | 8 of 15       | 13 of 15     | 1 of 15    | 7 of 15     | 4 of 15 | <b>4 of 8</b> |

| June 2009      | Central | Isle of Wight | North & East | Portsmouth | Southampton | Western | Total         |
|----------------|---------|---------------|--------------|------------|-------------|---------|---------------|
| Crimes         | 64      | 12            | 44           | 32         | 52          | 39      | <b>243</b>    |
| Detection rate | 14.06%  | 91.67%        | 40.91%       | 15.63%     | 1.92%       | 15.38%  | <b>20.58%</b> |

### Theft from a motor vehicle

| Year to date   | Central  | Isle of Wight | North & East | Portsmouth | Southampton | Western  | Total         |
|----------------|----------|---------------|--------------|------------|-------------|----------|---------------|
| Crimes         | 517      | 96            | 457          | 478        | 414         | 564      | <b>2526</b>   |
| MSG position   | 6 of 15  | 2 of 15       | 3 of 15      | 11 of 15   | 6 of 15     | 12 of 15 | <b>4 of 8</b> |
| Detection rate | 4.06%    | 11.46%        | 12.69%       | 3.97%      | 5.31%       | 4.43%    | <b>6.18%</b>  |
| MSG position   | 12 of 15 | 11 of 15      | 10 of 15     | 10 of 15   | 10 of 15    | 14 of 15 | <b>7 of 8</b> |

| June 2009      | Central | Isle of Wight | North & East | Portsmouth | Southampton | Western | Total        |
|----------------|---------|---------------|--------------|------------|-------------|---------|--------------|
| Crimes         | 158     | 36            | 173          | 137        | 128         | 186     | <b>818</b>   |
| Detection rate | 4.43%   | 2.78%         | 6.94%        | 8.76%      | 8.59%       | 9.68%   | <b>7.46%</b> |

Robbery, dwelling burglary and vehicle crime are the component parts of serious acquisitive crime. These individual crime types do not have targets.

### Gun crime rate

SPI 5.5

|                     | Central | Isle of Wight | North & East | Portsmouth | Southampton | Western | Total         | MSG position  |
|---------------------|---------|---------------|--------------|------------|-------------|---------|---------------|---------------|
| YTD June 2009       | 9       | 0             | 4            | 5          | 2           | 2       | <b>22</b>     | <b>3 of 8</b> |
| YTD June 2008       | 5       | 2             | 11           | 4          | 8           | 5       | <b>35</b>     |               |
| % change from 08/09 | 80.0%   | 0.0%          | -63.6%       | 25.0%      | -75.0%      | -60.0%  | <b>-37.1%</b> |               |

Gun crime figures published reflect the APACS technical definition which includes "where the victim is convinced of the presence of a firearm, even if it is concealed and there is evidence of the suspect's intention to create this impression".

### Knife crime rate

SPI 5.6

|                     | Central | Isle of Wight | North & East | Portsmouth | Southampton | Western | Total         | MSG position  |
|---------------------|---------|---------------|--------------|------------|-------------|---------|---------------|---------------|
| YTD June 2009       | 24      | 6             | 37           | 32         | 59          | 23      | <b>181</b>    | <b>3 of 8</b> |
| YTD June 2008       | 45      | 13            | 40           | 46         | 65          | 35      | <b>244</b>    |               |
| % change from 08/09 | -46.7%  | -53.8%        | -7.5%        | -30.4%     | -9.2%       | -34.3%  | <b>-25.8%</b> |               |

**Knife** = knife or other sharp instrument (including broken glass/bottles) piercing the skin or, for threats and attempts, instruments normally capable of piercing the skin.

Knife crime figures published reflect the APACS technical definition which includes "where the victim is convinced of the presence of a knife, even if it is concealed and there is evidence of the suspect's intention to create this impression".

### Serious sexual crime OBJ rate

SPI 6.4

The table below shows % of persons brought to justice for serious sexual crimes against the total number of serious sexual crimes

| OBJT Crime category             | Oct-08 | Nov-08 | Dec-08 | Jan-09 | Feb-09 | Mar-09 | Rolling average |
|---------------------------------|--------|--------|--------|--------|--------|--------|-----------------|
| Tier 1: Serious Sexual Offences | 45%    | 34%    | 81%    | 20%    | 44%    | 38%    | 40%             |

### Murder offences

SPI 5.4

|                           | Central | Isle of Wight | North & East | Portsmouth | Southampton | Western | Total    |
|---------------------------|---------|---------------|--------------|------------|-------------|---------|----------|
| YTD June 2009             | 0       | 0             | 1            | 1          | 0           | 0       | <b>2</b> |
| YTD Domestic Murders 2009 | 0       | 0             | 0            | 0          | 0           | 0       | <b>0</b> |

Note: MSG data is always published a month in arrears. For an explanation of this data, refer to the Summary on page 2

## Catching criminals and managing offenders

|                           |   |   |   |   |   |   |                |
|---------------------------|---|---|---|---|---|---|----------------|
| YTD June 2008             | 0 | 0 | 0 | 0 | 0 | 0 | 0              |
| YTD Domestic Murders 2008 | 0 | 0 | 0 | 0 | 0 | 0 | 0              |
| % change from 08/09       |   |   |   |   |   |   | Not applicable |

### FIU1 submissions

|                               | Central | Isle of Wight | North & East | Portsmouth | Southampton | Western | Total |
|-------------------------------|---------|---------------|--------------|------------|-------------|---------|-------|
| YTD June 2009                 | 57      | 70            | 50           | 48         | 56          | 39      | 320   |
| Number of eligible detections | 975     | 411           | 930          | 935        | 959         | 810     | 5020  |
| % submission rate             | 6%      | 17%           | 5%           | 5%         | 6%          | 5%      | 6%    |

|                               | Central | Isle of Wight | North & East | Portsmouth | Southampton | Western | Total |
|-------------------------------|---------|---------------|--------------|------------|-------------|---------|-------|
| June 2009                     | 25      | 28            | 17           | 21         | 13          | 15      | 119   |
| Number of eligible detections | 356     | 226           | 304          | 326        | 400         | 626     | 2238  |
| % submission rate             | 7%      | 12%           | 6%           | 6%         | 3%          | 2%      | 5%    |

Eligible crimes are those covered by Proceeds of Crime Act (POCA)

### Prolific and other Priority Offenders (PPOs) convictions

Number of convictions recorded against identified, prolific and other priority offenders (PPOs)

| Convictions                                  | Dec 2008 | Jan 2009 | Feb 2009 | Mar 2009 | Apr 2009 | May 2009 |
|--|----------|----------|----------|----------|----------|----------|
| Persistent Young Offenders                   | 89       | 94       | 83       | 80       | 99       | 78       |
| Priority Prolific Offenders                  | 28       | 27       | 40       | 25       | 39       | 23       |
| Persistent Priority Prolific Young Offenders | 5        | 3        | 2        | 2        | 6        | 2        |
| Young Offenders                              | 183      | 230      | 162      | 191      | 195      | 175      |

### Class A drugs sanction detections

Force Target

|               | Central | Isle of Wight | North & East | Portsmouth | Southampton | Western | Total |
|---------------|---------|---------------|--------------|------------|-------------|---------|-------|
| YTD June 2009 | 11      | 2             | 14           | 10         | 11          | 63      | 111   |
| YTD Target    | 12.47   | 9.97          | 19.95        | 19.95      | 24.93       | 12.47   | 99.73 |
| YTD June 2008 | 5       | 10            | 21           | 9          | 35          | 4       | 84    |

### Drug seizures information

|                     | Central | Isle of Wight | North & East | Portsmouth | Southampton | Western | Total |
|---------------------|---------|---------------|--------------|------------|-------------|---------|-------|
| YTD May 2009        | 196     | 45            | 171          | 116        | 161         | 138     | 827   |
| YTD May 2008        | 159     | 83            | 70           | 115        | 136         | 103     | 666   |
| % change from 08/09 | 23.3%   | -45.8%        | 144.3%       | 0.9%       | 18.4%       | 34.0%   | 24.2% |

Note: This data is produced one month in arrears

### Number of Organised Crime Groups (OCGs) disrupted

Force Target

| YTD June 2009  | 2008/2009 | 2009/2010 |
|--|-----------|-----------|
| Number of OCGs identified and mapped                                       | 3         | 5         |
| Number of OCGs disrupted or partially disrupted through Crime OCU activity | 1         | 2         |
| Number of OCGs subject to tactical activity                                | 6         | 12        |

## Protecting our communities

**Domestic violence and abuse** is defined by ACPO as: 'any incidence of threatening behaviour, violence or abuse (psychological, physical, sexual, financial or emotional) between adults, aged 18 and over, who are or have been intimate partners or family members, regardless of gender or sexuality'

### Domestic violence and abuse crime arrest rate

Force Target

Domestic violence arrest rate is based on records where the occurrence has been flagged as a domestic, and has an arrest event or a linked person reason of arrested.

Target >80%

| Year to Date               | Central | Isle of Wight | North & East | Portsmouth | Southampton | Western | Total  |
|----------------------------|---------|---------------|--------------|------------|-------------|---------|--------|
| Domestic Crimes            | 502     | 142           | 396          | 337        | 494         | 370     | 2241   |
| Domestic Crime Arrests     | 355     | 109           | 282          | 261        | 365         | 254     | 1626   |
| Domestic Crime Arrest Rate | 70.72%  | 76.76%        | 71.21%       | 77.45%     | 73.89%      | 68.65%  | 72.56% |

| Month                      | Central | Isle of Wight | North & East | Portsmouth | Southampton | Western | Total  |
|----------------------------|---------|---------------|--------------|------------|-------------|---------|--------|
| Domestic Crimes            | 183     | 45            | 150          | 108        | 168         | 136     | 790    |
| Domestic Crime Arrests     | 121     | 35            | 103          | 77         | 112         | 79      | 527    |
| Domestic Crime Arrest Rate | 66.12%  | 77.78%        | 68.67%       | 71.30%     | 66.67%      | 58.09%  | 66.71% |

### Police No Further Action (NFA) Rate

| Year to Date            | Central                        | Isle of Wight | North & East | Portsmouth | Southampton | Western | Total |
|-------------------------|--------------------------------|---------------|--------------|------------|-------------|---------|-------|
| Domestic Crimes         | Data available in July profile |               |              |            |             |         |       |
| Domestic Crime NFA'd    | Data available in July profile |               |              |            |             |         |       |
| Domestic Crime NFA Rate | Data available in July profile |               |              |            |             |         |       |

| Month                   | Central                        | Isle of Wight | North & East | Portsmouth | Southampton | Western | Total |
|-------------------------|--------------------------------|---------------|--------------|------------|-------------|---------|-------|
| Domestic Crimes         | Data available in July profile |               |              |            |             |         |       |
| Domestic Crime NFA'd    | Data available in July profile |               |              |            |             |         |       |
| Domestic Crime NFA Rate | Data available in July profile |               |              |            |             |         |       |

### Repeat incidents of domestic violence cases reviewed at MARAC

SPI 14.1

A Multi Agency Risk Assessment Conference (MARAC) meet to manage the highest risk domestic abuse cases. A 'case' = a victim & perpetrator(s) being reviewed at the same MARAC. Once a case has been to MARAC, it remains flagged as a MARAC case for 12 mths after the most recent MARAC review. A repeat case is when a case reviewed at MARAC has also been reviewed at the same MARAC within the preceding 12 mths. For further information on this measure please refer to Home Office Guidance on Performance Indicators for Policing & Community Safety 09/10.

| June 2009 YTD                     | Central | Isle of Wight | North & East | Portsmouth | Southampton | Western | Total |
|-----------------------------------|---------|---------------|--------------|------------|-------------|---------|-------|
| Number of cases reviewed at MARAC | 88      | 54            | 121          | 129        | 84          | 73      | 549   |
| Repeat cases reviewed at MARAC    | 32      | 25            | 32           | 42         | 36          | 14      | 181   |
| % Repeat cases                    | 36.4%   | 46.3%         | 26.4%        | 32.6%      | 42.9%       | 19.2%   | 33.0% |

### Hate crime detection rate

Force Target

Target >45%

| Year to Date   | Central | Isle of Wight | North & East | Portsmouth | Southampton | Western | Total  |
|----------------|---------|---------------|--------------|------------|-------------|---------|--------|
| Incidents      | 72      | 9             | 63           | 99         | 150         | 48      | 441    |
| Crimes         | 62      | 8             | 46           | 81         | 113         | 46      | 356    |
| Detections     | 24      | 6             | 23           | 35         | 49          | 15      | 152    |
| Detection Rate | 38.71%  | 75.00%        | 50.00%       | 43.21%     | 43.36%      | 32.61%  | 42.70% |

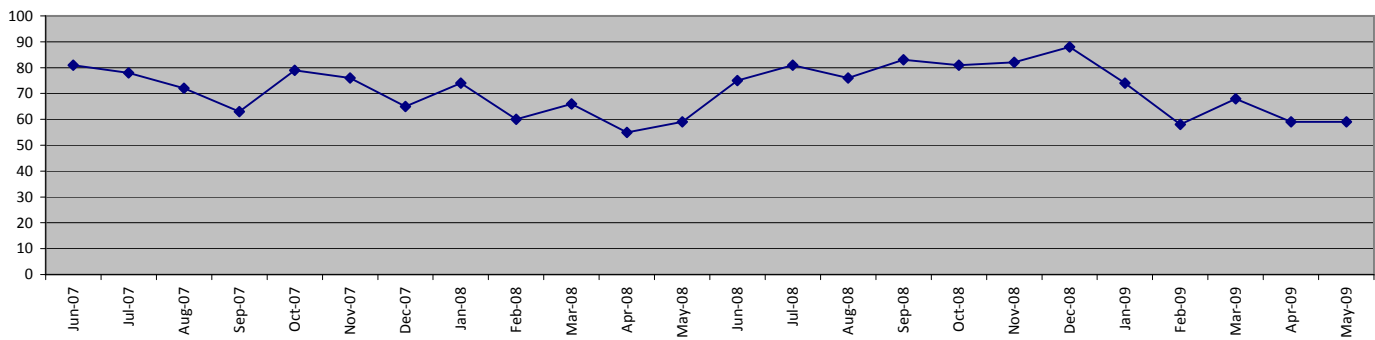
| Month          | Central | Isle of Wight | North & East | Portsmouth | Southampton | Western | Total  |
|----------------|---------|---------------|--------------|------------|-------------|---------|--------|
| Incidents      | 24      | 2             | 22           | 37         | 67          | 15      | 167    |
| Crimes         | 27      | 2             | 14           | 31         | 54          | 17      | 145    |
| Detections     | 13      | 1             | 4            | 13         | 19          | 9       | 59     |
| Detection Rate | 48.15%  | 50.00%        | 28.57%       | 41.94%     | 35.19%      | 52.94%  | 40.69% |

# Protecting our communities

## Road traffic casualties

SPI 9.1 Force Target

Fatal/serious injury casualties - all victims

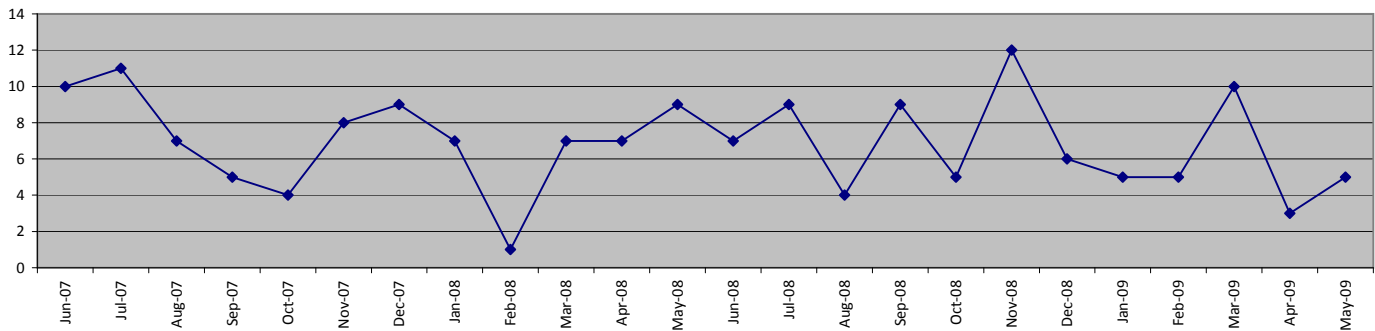


The Force target 2009/2010 is for less than 888 casualties, which equates to less than 148 in 61 days

YTD May 2009 = 118 casualties

|                           | Central | Isle of Wight | North&East | Portsmouth | Southampton | Western | Total      |
|---------------------------|---------|---------------|------------|------------|-------------|---------|------------|
| April 2009 - May 2009     | 26      | 9             | 26         | 8          | 18          | 31      | <b>118</b> |
| of these, fatalities were | 2       | 0             | 2          | 1          | 0           | 3       | <b>8</b>   |
| April 2008 - May 2008     | 19      | 13            | 25         | 14         | 11          | 32      | <b>114</b> |

Fatal/serious injury casualties - victims under 16 years



The DETR target is for a 50% reduction in child casualties by 2010 from 164 to 82

|                           | Central | Isle of Wight | North&East | Portsmouth | Southampton | Western | Total     |
|---------------------------|---------|---------------|------------|------------|-------------|---------|-----------|
| April 2009 - May 2009     | 3       | 1             | 0          | 2          | 1           | 1       | <b>8</b>  |
| of these, fatalities were | 0       | 0             | 0          | 0          | 0           | 0       | <b>0</b>  |
| April 2008 - May 2008     | 3       | 3             | 4          | 3          | 1           | 2       | <b>16</b> |

Note: YTD numbers may change as the accident record data are updated each month

Note: The casualties in East Hampshire have all been attributed to North & East OCU in the absence of a breakdown by OCUs

# Making the most of our resources

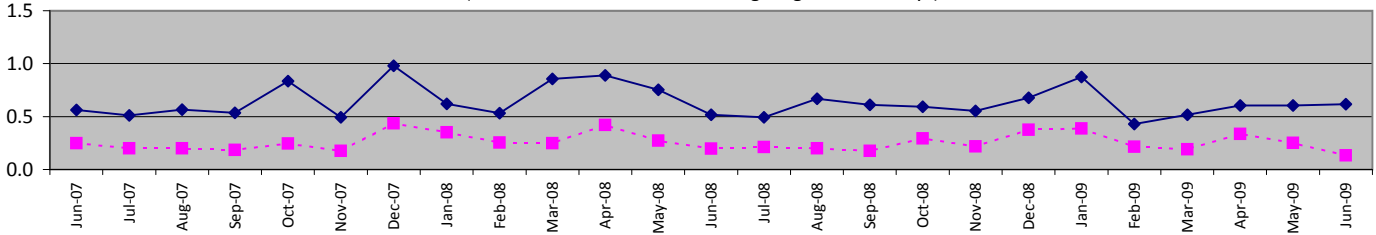
SPI 13.1 Force Target

All Police officer sickness YTD = **1.83**

All Police officer sickness June = **0.62**

## Police officers in OCUs

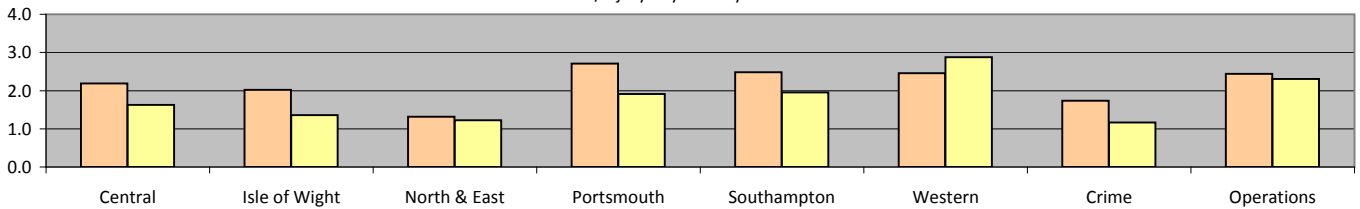
Sickness and injury absence days per officer by month  
(broken line shows data excluding long-term sick days)



Force target for 09/10 = 7.5 days or fewer per officer (1.87 for 3 months) YTD = **1.83** days lost per officer

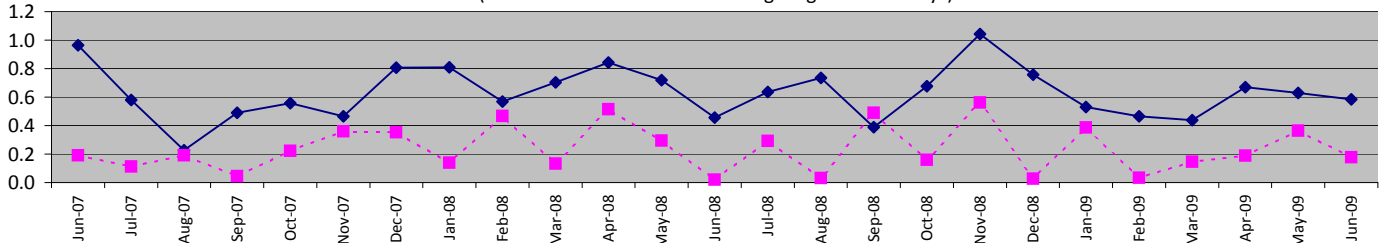
|                                 | Central | Isle of Wight | North & East | Portsmouth | Southampton | Western | Crime  | Operations | OCU Totals |
|---------------------------------|---------|---------------|--------------|------------|-------------|---------|--------|------------|------------|
| YTD Apr 09 - Jun 09             | 1.62    | 1.35          | 1.22         | 1.91       | 1.95        | 2.88    | 1.16   | 2.31       | 1.83       |
| YTD Apr 08 - Jun 08             | 2.19    | 2.02          | 1.32         | 2.71       | 2.48        | 2.46    | 1.74   | 2.44       | 2.16       |
| This month                      | 0.51    | 0.30          | 0.35         | 0.55       | 0.90        | 1.04    | 0.34   | 0.77       | 0.62       |
| % change                        | -25.8%  | -33.1%        | -7.1%        | -29.4%     | -21.3%      | 17.1%   | -32.9% | -5.3%      | -15.5%     |
| Short Term only Apr 09 - Jun 09 | 0.76    | 0.73          | 0.55         | 0.87       | 0.76        | 0.70    | 0.48   | 0.95       | 0.72       |

Sickness/injury days lost by officer YTD



## Police officers not in OCUs

Sickness and injury absence days per police officer by month  
(broken line shows data excluding long-term sick days)

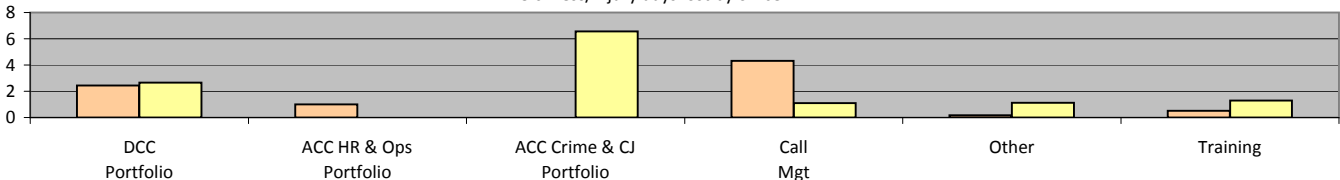


Force target for 09/10 = 7.5 days or fewer per officer (1.87 for 3 months) YTD = **1.89** days lost per officer

|                                 | DCC Portfolio | ACC HR & Ops Portfolio | ACC Crime & CJ Portfolio | Call Mgt | Other  | Training | Non-OCU Totals |
|---------------------------------|---------------|------------------------|--------------------------|----------|--------|----------|----------------|
| YTD Apr 09 - Jun 09             | 2.67          | 0.00                   | 6.56                     | 1.09     | 1.13   | 1.29     | 1.89           |
| YTD Apr 08 - Jun 08             | 2.44          | 1.00                   | 0.00                     | 4.31     | 0.17   | 0.50     | 2.02           |
| This month                      | 0.62          | 0.00                   | 2.09                     | -0.15    | 0.33   | 0.81     | 0.59           |
| % change                        | 9.3%          | 0.0%                   | 0.0%                     | -74.8%   | 578.0% | 155.8%   | -6.7%          |
| Short Term only Apr 09 - Jun 09 | 0.18          | 0.00                   | 0.47                     | 1.09     | 1.13   | 0.98     | 0.73           |

ACC HR and Ops Portfolio excludes Training figures which are reported on separately. No police officers work within DoF Portfolio. From Jun 09 'Other' for 09/10 data includes CC and TO Portfolio staff

Sickness/injury days lost by officer YTD



# Making the most of our resources

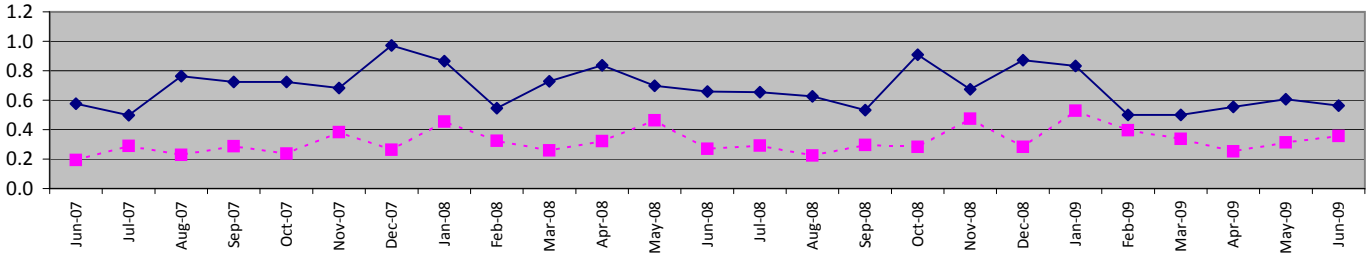
SPI 13.2 Force Target

All Police staff sickness YTD = **1.94**

All Police staff sickness June = **0.65**

## Police staff in OCUs

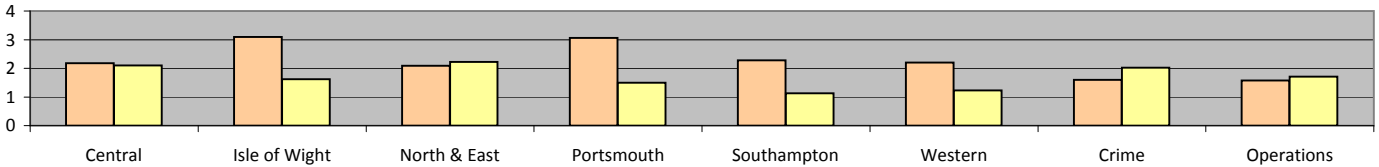
Sickness and injury absence days per police staff member by month  
(broken line shows data excluding long-term sick days)



Force target for 09/10 = 7.5 days or fewer per staff (1.87 for 3 months) YTD = **1.72** days lost per staff member

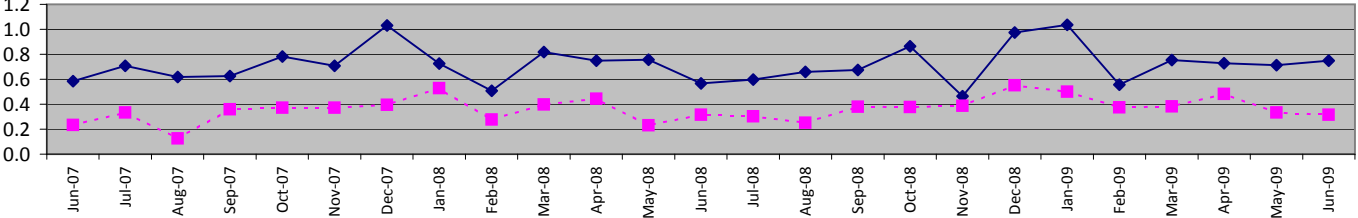
|                                 | Central     | Isle of Wight | North & East | Portsmouth  | Southampton | Western | Crime       | Operations  | OCU Totals    |
|---------------------------------|-------------|---------------|--------------|-------------|-------------|---------|-------------|-------------|---------------|
| YTD Apr 09 - Jun 09             | <b>2.10</b> | 1.62          | <b>2.22</b>  | 1.50        | 1.13        | 1.22    | <b>2.02</b> | 1.71        | <b>1.72</b>   |
| YTD Apr 08 - Jun 08             | 2.17        | 3.09          | 2.09         | 3.06        | 2.28        | 2.20    | 1.59        | 1.57        | <b>2.19</b>   |
| This month                      | <b>0.75</b> | 0.39          | <b>0.68</b>  | 0.48        | 0.26        | 0.37    | 0.58        | <b>1.08</b> | <b>0.75</b>   |
| % change                        | -3.5%       | -47.5%        | 6.5%         | -50.9%      | -50.4%      | -44.4%  | 26.7%       | 8.7%        | <b>-21.3%</b> |
| Short Term only Apr 09 - Jun 09 | 0.76        | 0.88          | <b>1.02</b>  | <b>1.08</b> | 0.63        | 0.67    | 0.78        | <b>1.04</b> | <b>0.83</b>   |

Sickness/injury days lost by Police Staff YTD



## Police staff not in OCUs

Sickness and injury absence days per police staff member by month  
(broken line shows data excluding long-term sick days)



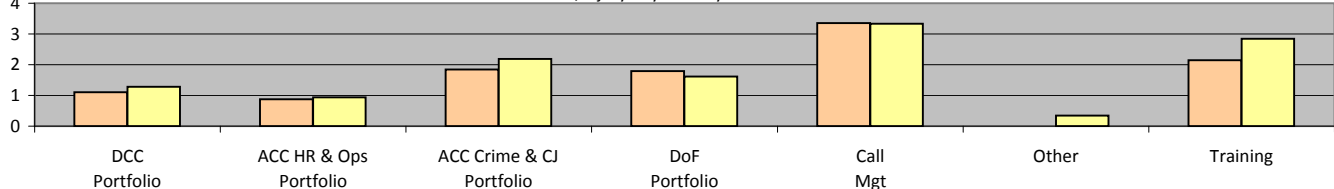
Force target for 09/10 = 7.5 days or fewer per staff (1.87 for 3 months) YTD = **2.19** days lost per staff member

|                                 | DCC Portfolio | ACC HR & Ops Portfolio | ACC Crime & CJ Portfolio | DoF Portfolio | Call Mgt    | Other | Training    | Non-OCU Totals |
|---------------------------------|---------------|------------------------|--------------------------|---------------|-------------|-------|-------------|----------------|
| YTD Apr 09 - Jun 09             | 1.28          | 0.94                   | <b>2.18</b>              | 1.61          | <b>3.33</b> | 0.34  | <b>2.85</b> | <b>2.19</b>    |
| YTD Apr 08 - Jun 08             | 1.10          | 0.87                   | 1.85                     | 1.79          | 3.35        | 0.00  | 2.15        | <b>2.07</b>    |
| This month                      | 0.46          | 0.37                   | <b>0.69</b>              | 0.50          | <b>1.26</b> | -2.50 | 0.69        | <b>0.75</b>    |
| % change                        | 16.3%         | 7.9%                   | 18.2%                    | -10.1%        | -0.6%       | 0.0%  | 32.6%       | <b>5.6%</b>    |
| Short Term only Apr 09 - Jun 09 | 0.80          | 0.58                   | 1.19                     | 0.69          | <b>1.65</b> | 0.34  | 1.09        | <b>1.13</b>    |

ACC HR and Ops Portfolio excludes Training figures which are reported on separately

From Jun 09 'Other' for 09/10 data includes CC and TO Portfolio staff

Sickness/injury days lost by Police Staff YTD

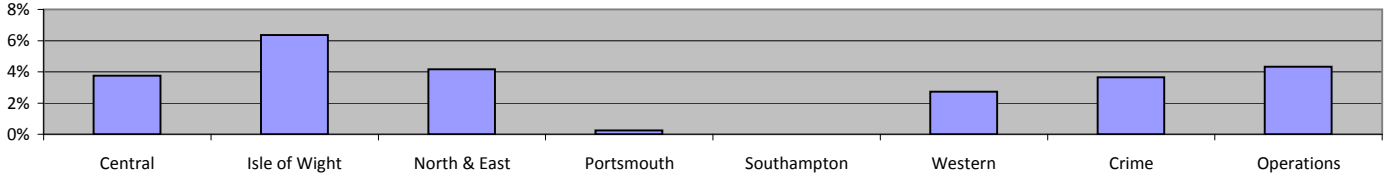


# Making the most of our resources

## Overdue PDRs

### Police officer PDRs - police officers in OCUs

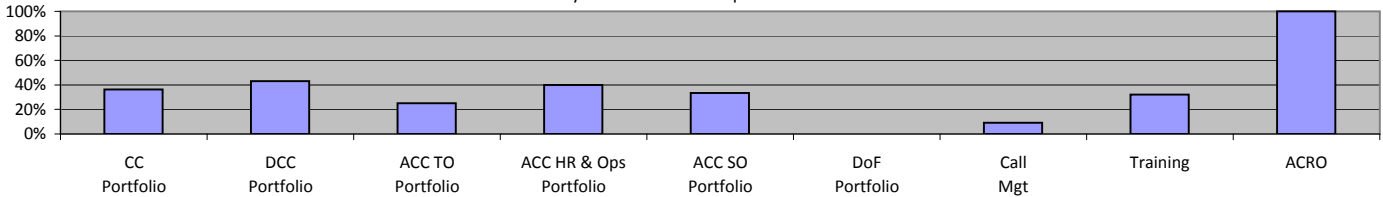
PDRs overdue by 1 month or more - police officers on OCUs



| June 2009  | Central | Isle of Wight | North & East | Portsmouth | Southampton | Western | Crime | Operations |
|------------|---------|---------------|--------------|------------|-------------|---------|-------|------------|
| Population | 614     | 220           | 553          | 409        | 506         | 515     | 411   | 392        |
| Overdue    | 23      | 14            | 23           | 1          | 0           | 14      | 15    | 17         |
| % overdue  | 3.7%    | 6.4%          | 4.2%         | 0.2%       | 0.0%        | 2.7%    | 3.6%  | 4.3%       |

### Police officer PDRs - police officers not on OCUs

PDRs overdue by 1 month or more - police officers not on OCUs

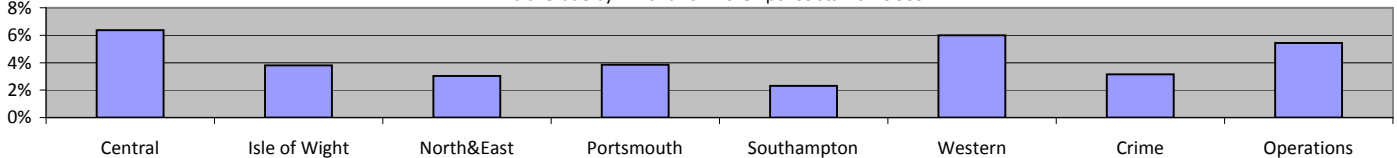


| June 2009  | CC Portfolio | DCC Portfolio | ACC TO Portfolio | ACC HR & Ops Portfolio | ACC SO Portfolio | DoF Portfolio | Call Mgt | Training | ACRO   |
|------------|--------------|---------------|------------------|------------------------|------------------|---------------|----------|----------|--------|
| Population | 11           | 44            | 8                | 5                      | 12               | N/A           | 33       | 56       | 2      |
| Overdue    | 4            | 19            | 2                | 2                      | 4                | N/A           | 3        | 18       | 2      |
| % overdue  | 36.4%        | 43.2%         | 25.0%            | 40.0%                  | 33.3%            | N/A           | 9.1%     | 32.1%    | 100.0% |

ACC HR and Ops Portfolio excludes Training figures which are reported on separately. No police officers work within DoF Portfolio.

### Police staff PDRs - police staff in OCUs

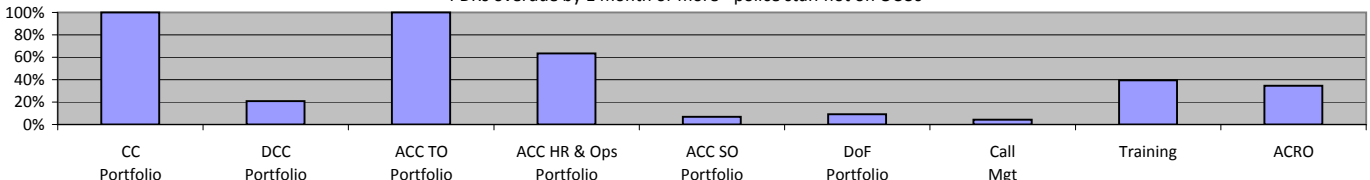
PDRs overdue by 1 month or more - police staff on OCUs



| June 2009  | Central | Isle of Wight | North&East | Portsmouth | Southampton | Western | Crime | Operations |
|------------|---------|---------------|------------|------------|-------------|---------|-------|------------|
| Population | 236     | 105           | 198        | 182        | 217         | 200     | 317   | 129        |
| Overdue    | 15      | 4             | 6          | 7          | 5           | 12      | 10    | 7          |
| % overdue  | 6.4%    | 3.8%          | 3.0%       | 3.8%       | 2.3%        | 6.0%    | 3.2%  | 5.4%       |

### Police staff PDRs - police staff not in OCUs

PDRs overdue by 1 month or more - police staff not on OCUs



| June 2009  | CC Portfolio | DCC Portfolio | ACC TO Portfolio | ACC HR & Ops Portfolio | ACC SO Portfolio | DoF Portfolio | Call Mgt | Training | ACRO  |
|------------|--------------|---------------|------------------|------------------------|------------------|---------------|----------|----------|-------|
| Population | 2            | 306           | 2                | 63                     | 337              | 143           | 409      | 89       | 90    |
| Overdue    | 2            | 64            | 2                | 40                     | 23               | 13            | 17       | 35       | 31    |
| % overdue  | 100.0%       | 20.9%         | 100.0%           | 63.5%                  | 6.8%             | 9.1%          | 4.2%     | 39.3%    | 34.4% |

ACC HR and Ops Portfolio excludes Training figures which are reported on separately

## Making the most of our resources

### NCRS compliance

|                        | Central | Isle of Wight | North & East | Portsmouth | Southampton | Western | Crime   |
|------------------------|---------|---------------|--------------|------------|-------------|---------|---------|
| <b>Self-Inspection</b> | 91.0%   | 85.0%         | 80.0%        | 66.0%      | 81.0%       | 90.0%   | No data |

Note: Self-Inspections - only appealed records are moderated by the Force Crime Registrar  
These inspections were undertaken in March 2008

### Budget spend

The actual spend to the end of May 2009 was £48.3m. The projected spend for the force at the end of the financial year is £303.5m, which will be an underspend of £1.2m against the agreed budget.

|                                       | Central  | Isle of Wight | North & East | Portsmouth | Southampton | Western     | Crime   | Operations |
|---------------------------------------|----------|---------------|--------------|------------|-------------|-------------|---------|------------|
| Projected over/(under)spend 2009/2010 | £610,000 | £156,000      | -£1,208,000  | £635,000   | -£120,000   | -£1,044,000 | £12,000 | £83,000    |

### Efficiency savings

The Authority needs to maximise efficiency gains both due to its budgetary constraints and in order to achieve value for money. In addition, there is a national Home Office target to deliver recurring efficiency or productivity gains equivalent to 10.3% of the 2007/08 'Gross Revenue Expenditure' by the end of 2010/11. Each Authority must set its own challenging target. The Authority and Force are currently working to a target equivalent to the national target, which equates to £30m over the 3 years (an average of £10m per annum). The actual achieved as at 31/03/09 was £9.4m.

## Making the most of our resources

### Specialist support

#### 7 OCU

|              | OCU Supported |          |          |          |          |          |          | Total     |
|--------------|---------------|----------|----------|----------|----------|----------|----------|-----------|
|              | 1             | 2        | 3        | 4        | 5        | 6        | Other    |           |
| April 2009   | 2             | 1        | 4        | 4        | 4        | 1        | 0        | 16        |
| May 2009     | 1             | 1        | 0        | 3        | 3        | 0        | 0        | 8         |
| June 2009    | 4             | 0        | 1        | 2        | 1        | 1        | 0        | 9         |
| <b>Total</b> | <b>7</b>      | <b>2</b> | <b>5</b> | <b>9</b> | <b>8</b> | <b>2</b> | <b>0</b> | <b>33</b> |

NOTE: An 'assist' includes assistance that is outside of normal working practices and can encompass practical resources and/or managerial support. For example, it includes support with house to house/investigative enquiries, administrative support, interviewing/statement taking, advice and IT examinations, to name a few. A single assist can involve anything from one member of staff to several from a period of a few hours, to a whole week. An assist does not include phone calls.

#### 8 OCU

| 8 OCU Commitment to ANPR Operations - April - June 09 |               |          |           |           |           |           |          |            |
|---|---------------|----------|-----------|-----------|-----------|-----------|----------|------------|
|   | OCU Supported |          |           |           |           |           |          | Total      |
|   | 1             | 2        | 3         | 4         | 5         | 6         | Other    |            |
| No. of Ops  | 30            | 2        | 4         | 18        | 12        | 8         | 2        | 76         |
| Arrests   | 15            | 1        | 1         | 9         | 12        | 2         | 1        | 41         |
| S.165 Vehicle Seizures                                | 30            | 2        | 4         | 18        | 24        | 7         | 1        | 86         |
| Impaired Drivers                                      | 10            | 0        | 2         | 13        | 15        | 5         | 0        | 45         |
| C12a  | 56            | 2        | 4         | 23        | 17        | 14        | 1        | 117        |
| C12b  | 10            | 0        | 4         | 15        | 3         | 2         | 0        | 34         |
| <b>Total Results</b>                                  | <b>121</b>    | <b>5</b> | <b>15</b> | <b>78</b> | <b>71</b> | <b>30</b> | <b>3</b> | <b>323</b> |

| 8 OCU Arrests for Death by Driving Offences April - June 09                  |                  |                |                  |
|--|------------------|----------------|------------------|
|  | Persons Arrested | No. of arrests | Police Disposals |
| 4/04 Causing Death by Dangerous Driving                                      | 0                | 0              | 0                |
| 4/06 Causing Death by Careless Driving under Influence of Drink or Drugs     | 1                | 1              | 1                |
| 4/08 Causing Death by Careless or Inconsiderate Driving                      | 3                | 3              | 2                |
| 4/09 Causing Death by Driving: Unlicensed, Disqualified or Uninsured Drivers | 0                | 0              | 0                |
| <b>Total</b>   | <b>4</b>         | <b>4</b>       | <b>3</b>         |

| Interventions in support of OCUs and Force Strategy YTD |                  |  |       |       |                    |               |                                     |
|---|------------------|--|-------|-------|--------------------|---------------|-------------------------------------|
|   | Persons Arrested | Apr-June 2009 Incidents attended* <sup>1</sup> |       |       | FPNs* <sup>2</sup> |               | S165 Vehicle Seizures* <sup>3</sup> |
|   |                  | Total  | % DSP | % ONS | Disorder           | Other         |                                     |
| Air Support Unit  | 3                | Data given as a whole for 8 OCU                |       |       |                    | 2             |                                     |
| Dog Support Unit  | 59               |  |       |       | 1                  | 30            |                                     |
| Force Support Unit                                      | 120              |  |       |       | 1                  | 0             |                                     |
| Roads Policing Unit                                     | 559              |  |       |       | 2                  | 4406          |                                     |
| Specialist Firearms Officers                            | 46               |  |       |       | 1                  | 36            |                                     |
| Armed Response Vehicles                                 | 272              |  |       |       | 6                  | 236           |                                     |
| <b>Total</b>  | <b>1059</b>      |  |       |       | <b>61962</b>       | <b>14.72%</b> | <b>9.99%</b>                        |

8 OCU units were OnScene at **67.90%** of those incidents they were dispatched to  
 8 OCU units currently equate to approx 8% of the Force frontline operational officers

\*<sup>1</sup>Altaris data - Dispatch (DSP) and Arrival (ONS) of 8 OCU units as a percentage of Grade 1 and 2 incidents created (Grade 2 includes 2 and 2N)

\*<sup>2</sup> FPNs are Fixed Penalty Notices issued

Licence

## Equipping our team to deliver

### Financial awareness training

Financial awareness training will be undertaken for budget holders with the aim of ensuring a minimum of 95% of budget holders are trained by the end of the financial year. The target is for at least 95% of all Chief Inspector to Chief Superintendents to be trained by the end of the financial year

|  | Full Year<br>Apr 09 - Mar 10 |                             | Year to Date<br>(May 09) |                    |
|--|------------------------------|-----------------------------|--------------------------|--------------------|
|  | Courses<br>Planned           | Numbers<br>to be<br>trained | Courses<br>Held          | Numbers<br>Trained |
| Chief Inspector to Chief Superintendent (target) | 10                           | 160                         | 1                        | 4                  |
| All staff  | 10                           | 160                         | 1                        | 13                 |

### Preparing for frontline supervision

A leadership project is underway and a formal Force leadership target will be established with supporting material to be published here in the coming months

|   | Full Year<br>Apr 09 - Mar 10 |                             | Year to Date<br>(May 09) |                    |
|---|------------------------------|-----------------------------|--------------------------|--------------------|
|   | Courses<br>Planned           | Numbers<br>to be<br>trained | Courses<br>Held          | Numbers<br>Trained |
| Sergeants Operational Activities          | 6                            | 108                         | 2                        | 18                 |
| Inspectors Statutory Responsibilities     | 5                            | 70                          | 2                        | 24                 |
| First Line Manager - Leadership Part 1    | 6                            | 96                          | 2                        | 32                 |
| First Line Manager - Leadership Part 2    | 6                            | 96                          | 4                        | 57                 |
| First Line Manager - Action Learning Sets | 18                           | 108                         | 9                        | 98                 |

### Mobile data

A mobile data project is underway - no information will be available before September 2009

### Minority ethnic officer recruitment

SPI 3.1

|               | All recruits | Minority ethnic recruits | %    |
|---------------|--------------|--------------------------|------|
| YTD June 2009 | 29           | 1                        | 3.4% |

### Female officer representation

SPI 3.2

|               | Male strength | Female strength | %     |
|---------------|---------------|-----------------|-------|
| YTD June 2009 | 2698.1        | 1022.9          | 27.5% |