

Performance Profile November 2009



Summary

2009/10 Reporting Year

This document contains a strategic overview of the Constabulary's performance. It has a variety of performance measures within it. The format of the profile has been aligned to the Policing Priorities identified by the Control Strategy. It provides information on our performance against Force targets, some of the APACS Indicators and the Policing Pledge. It also aims to provide supplementary information to assist in understanding reasons behind the performance in these areas. It has been designed as a headline document that will enable our customers, both internally and externally, to easily assess performance information for key domains.

At the front of the document there are several matrices that reflect our performance against our targets, firstly year to date and secondly relevant for that particular month.

Performance in key areas is then explored in more depth with an indication of where each measure has originated - for example, APACS Indicator or a Force Control Strategy (FCS) measure.

Where applicable, within the document, MSG (Most Similar Group) data is published along with the crime and detection data. MSGs are calculated by the Home Office based on a number of socio-demographic & geographic variables which are strongly linked to crime/incident levels and the fear of crime. These groups provide a benchmark for comparison of crime and detection rates. Below the applicable crime tables there are three rows relating to MSG data. The first provides the MSG position for the OCU/Force for that crime type. The second displays OCU Actual, this is the number of offences per 1,000 population. The third row shows the MSG Average which is the total number of offences per 1,000 population divided by the number within the MSG. The same three rows are provided in relation to detection data, where data is provided in % figures rather than per 1,000 population.

Please note: iQuanta data is provisional. Within the profile, Hampshire data is published and compared against the MSG average. The other forces within Hampshire's MSG are: Avon and Somerset, Bedfordshire, Essex Hertfordshire, Kent, Sussex and Thames Valley. We are unable to provide figures from iQuanta for these forces, due to the provisional nature of this data.

This document is then taken forward by key stakeholders within the organisation to the Force Performance Review Group, where it is used to highlight areas of good performance and those for development.

Crime OCU contribute to the following areas within this document, either via investigation, forensic support, and/or review of these crimes: homicide, serious violent, sexual and acquisitive crime, class A drug seizures, domestic violence/hate crime, FIU form submissions, gun/knife crime (where this results in a major investigation/forensic support), SO assistance to TO, sickness and PDRs.

This is an evolving document and as such, the content may alter over time and any feedback would be welcomed by the Performance Review Team.

MSG Colour Key

Force	OCU
1-2	1-4
3-4	5-8
5-6	9-12
7-8	13-15

Year to date and Monthly performance matrices

4-6

including notes on matrices terminology

Policing Pledge Scorecard

7 Policing Pledge Scorecard

Providing an excellent service

8	National public confidence measure	APACS 2.2	FCS	iQuanta
8	Local confidence survey data			Consultation & Research Team
8	Overall satisfaction	APACS 1.1	FCS	Consultation & Research Team
8	Being kept informed		FCS	Consultation & Research Team
9	Comparative satisfaction of minority ethnic groups	APACS 1.2		Consultation & Research Team
9	Satisfaction of victims of racist incidents	APACS 1.3		Consultation & Research Team
9	MSG user satisfaction data			Consultation & Research Team
9-10	Responding to victims of crime			Citizen Focus Inspector
10	Letters of appreciation, reports of incivility, expression of dissatisfaction			Professional Standards Department
11	Responding to public contact (inc call handling data)			Call Management

An active presence in every neighbourhood

12	Rowdy and nuisance behaviour		FCS	Business Objects
12	Vehicle nuisance/Inappropriate vehicle use		FCS	Business Objects
13	Safer Neighbourhood Teams			CARM team & Personnel
14	Criminal damage		FCS	Business Objects

Catching criminals and managing offenders

15	All crime and sanction detections		FCS	Business Objects
16	Serious violent crime, sanction detections and OBJT rate	APACS 5.1&6.1	FCS	Business Objects
17	Assault with less serious injury	APACS 5.3	FCS	Business Objects
18	Serious acquisitive crime, sanction detections and OBJT rate	APACS 5.2&6.2	FCS	Business Objects
19	Serious acquisitive crime breakdown			Business Objects
20	Gun and knife crime	APACS 5.5&5.6		Business Objects
20	Serious sexual crime OBJT rate	APACS 6.4		Criminal Justice Department
20	Murder offences incl domestic murders	APACS 5.4	FCS	Business Objects
20	FIU1 submission levels		FCS	Force Intelligence
20	PPO convictions	APACS 10.1	FCS	Criminal Justice Department
20	Class A drugs sanction detections		FCS	Business Objects
20	Drug seizures			Performance Review Team
20	Organised Crime Groups		FCS	7 OCU performance team

Protecting our communities

21	Domestic violence and abuse arrest & NFA rates		FCS	Business Objects
21	Repeat incidents of domestic violence cases reviewed at MARAC	APACS 14.1		Special Investigations Department
21	Hate crime detection rate		FCS	Business Objects
22	Road traffic casualties	APACS 9.1	FCS	8 OCU performance team
23	Road traffic offences			8 OCU performance team

Making the most of our resources

24	Police officer sickness	APACS 13.1	FCS	PRT - Delphi + Personnel - Staffing Figures
24	Police staff sickness	APACS 13.2		PRT - Delphi + Personnel - Staffing Figures
25	Overdue PDRs			Personnel
26	Budget spend	APACS 12.1	FCS	Finance
26	Efficiency savings		FCS	Finance
26	Specialist support to TO			7 and 8 OCU performance teams

Equipping our team to deliver

27	Financial awareness training		FCS	Training Department
27	Preparing for frontline supervision		FCS	Training Department
27	Mobile data			Not yet available
27	Minority ethnic officer recruitment	APACS 3.1		Personnel
27	Female officer representation	APACS 3.2		Personnel

Year to date performance targets matrix

	Target	Actual	Central	Isle of Wight	North & East	Portsmouth	Southampton	Western
Providing an excellent service								
Confidence in local police	>51.3%	48.5%	This is a Force measure					
Overall satisfaction (data for rolling 12 months)	>65.0%	66.0%	68.0%	68.0%	64.0%	66.0%	62.0%	66.0%
An active presence in every neighbourhood								
Rowdy & nuisance behaviour	50209	45343	8731	2902	7803	7723	10580	7604
	OCU specific targets		9292	3576	9689	7654	11819	8179
Vehicle nuisance / inappropriate vehicle use	10008	7401	1761	541	1522	718	1422	1437
	OCU specific targets		2327	669	2034	862	1892	2224
Reduce criminal damage	22886	20504	4548	1486	4074	2635	4119	3642
	OCU specific targets		5046	1677	4398	3102	4435	4228
Catching criminals & managing offenders								
All crime	108653	99974	21075	6588	18929	16023	19931	17428
	OCU specific targets		22141	7084	20571	16936	22790	19131
All crime SD	>25%	26.8%	24.8%	32.2%	27.3%	28.0%	26.7%	25.6%
	OCU specific targets		25.0%	30.0%	25.5%	25.5%	25.0%	25.0%
Serious violent crime	606	621	103	46	112	100	176	84
	OCU specific targets		115	42	96	122	157	74
Serious violent crime SD	>50%	54.9%	68.9%	54.3%	61.6%	48.0%	42.6%	63.1%
	OCU specific targets		57.0%	60.0%	56.0%	41.0%	45.0%	50.0%
Assault with less serious injury	9221	9554	1964	629	1557	1755	2181	1468
	OCU specific targets		1940	649	1634	1333	2173	1492
Serious sexual offences (OBTJ)	Data being developed		This is a Force measure					
Serious acquisitive crime	14972	12570	2564	541	2436	2188	2446	2395
	OCU specific targets		2735	614	2935	2635	3269	2784
Serious acquisitive crime SD	>15%	12.1%	10.4%	15.7%	12.5%	13.1%	12.6%	11.3%
Class A drugs SD	>267	275	16	20	62	38	70	69
	OCU specific targets		33.4	26.7	53.5	53.5	66.8	33.4
Organised crime group (OCG) - disruptions	>17	31	Owned by Crime OCU					

Year to date performance targets matrix

	Target	Actual	Central	Isle of Wight	North & East	Portsmouth	Southampton	Western
Protecting our communities								
Domestic crimes arrest rate	>80%	78.3%	75.0%	76.3%	80.4%	80.7%	80.4%	76.4%
Hate crime SD	>45%	48.5%	50.0%	42.4%	51.4%	49.1%	50.2%	39.3%
Road traffic casualties	<519	546	Owned by Operations OCU					
Making the most of our resources								
Police officer sickness *	<5.01		No data available for October profile					
Police staff sickness *	<5.01		No data available for October profile					
Budget spend	<50%	47%	49%	47%	49%	48%	50%	47%
Efficiency savings 2008-2011 (£m)	33	25.4	This is a Force measure					
Equipping our staff to deliver								
Financial awareness training			Data not suitable for matrix					
Preparing for frontline supervision			Data not suitable for matrix					
Mobile data			Data not suitable for matrix					
Force Total - targets achieved	13		10	10	12	11	10	11

Notes to be read in conjunction with matrices

All citizen focus data

OBTJ

Road traffic casualties

Budget spend

Efficiency savings

SD

Sickness data

OCU specific targets

Based on "completely or very satisfied"

Offenders Brought To Justice - current data is to

August 2009

All data until

31/10/2009

Data is always one month in arrears

For information on this target see page 25 of this Profile

Sanction detections

Force Actual = total for ALL officers/police staff - including those not in OCU

OCU specific targets are rounded to 2 decimal places; the actual figure may therefore seem the same but appear red due to this rounding

Monthly performance targets matrix

This matrix is based on monthly data compared to Force targets

	Target	Actual	Central	Isle of Wight	North & East	Portsmouth	Southampton	Western
An active presence in every neighbourhood								
Rowdy & nuisance	6173	3877	735	209	681	673	999	580
	OCU specific targets		1142	440	1191	941	1453	1006
Vehicle nuisance / inappropriate vehicle use	1230	594	135	36	123	59	130	111
	OCU specific targets		286	82	250	106	233	273
Reduce criminal damage	2814	2225	438	161	487	293	429	417
	OCU specific targets		620	206	541	381	545	520
Catching criminals & managing offenders								
All crime	13359	11428	2275	588	2263	1916	2376	2010
	OCU specific targets		2722	871	2529	2082	2802	2352
All crime (SD)	25.0%	29.9%	27.6%	49.1%	28.4%	33.6%	28.2%	27.1%
	OCU specific targets		25.0%	30.0%	25.5%	25.5%	25.0%	25.0%
Serious violent crime	75	71	10	1	18	13	21	8
	OCU specific targets		14.1	5.2	11.8	15.0	19.3	9.2
Serious violent crime SD	>50%	56.3%	100.0%	200.0%	61.1%	46.2%	23.8%	75.0%
	OCU specific targets		57.0%	60.0%	56.0%	41.0%	45.0%	50.0%
Assault with less serious injury	1134	1012	213	53	163	198	242	143
	OCU specific targets		239	80	201	164	267	183
Serious acquisitive crime	1841	1525	309	50	287	277	309	293
	OCU specific targets		336	75	361	324	402	342
Serious acquisitive crime SD	>15%	10.6%	10.0%	30.0%	8.7%	7.2%	15.9%	7.5%
Serious sexual offences (OBTJ)	Data being developed		This is a Force measure					
Class A drugs SD	>33	67	1	9	30	10	16	1
Protecting our communities								
Domestic crimes arrest rate	>80%	76.6%	71.1%	79.5%	80.3%	72.7%	77.2%	82.2%
Hate crime SD	>45%	53.8%	69.2%	20.0%	53.3%	50.0%	61.4%	35.7%
Making the most of our resources								
Police officer sickness	<0.625		No data available for October profile					
Police staff sickness	<0.625		No data available for October profile					
Force Total - targets achieved	11		10	11	10	10	10	10

Hampshire Constabulary Policing Pledge Scorecard

Pledge	YTD 2009/2010
--------	------------------

Percentage of respondents tending to 'agree' or 'strongly agree' that: 'The police and local council are dealing with the anti-social behaviour and crime issues that matter in this area'	48.5%
--------------------------------------------------------------------------------------------------------------------------------------------------------------------------------------------	-------

Pledge 1 - Treat people fairly with dignity and respect, ensuring they have fair access to our services

Percentage of respondents answering 'strongly agree' or 'tend to agree' when asked 'The police in this area treat everyone fairly regardless of who they are'	67.4%
---------------------------------------------------------------------------------------------------------------------------------------------------------------	-------

Pledge 2 - Help promote our dedicated Safer Neighbourhoods Teams to the local community, including where they are based, how to contact them and how to work with them

Measure under development - dip sampling of media/communications to be carried out

Pledge 3 - Ensure we are visible in our neighbourhoods at times when we will be most effective and when communities need us most. Safer Neighbourhoods teams will spend at least 80% of their time visibly working in neighbourhoods, tackling the most pressing priorities

Safer Neighbourhood Team abstractions	See
Safer Neighbourhood Team vacancy rate	In p

Pledge 4 - Respond to every message directed to every Safer Neighbourhood Team within 24 hours and, where necessary, provide a more detailed response as soon as we can

Measure under development - dip sampling of media/communications to be carried out

Pledge 5 - Aim to answer 999 calls within 10 seconds, deploy to emergencies immediately and give an estimated time to arrive. Provide assistance to callers as safely and quickly as possible, aiming to get to them within 15 minutes

No. of 999 calls	18,849
%age of 999 calls answered within 10 seconds	96.2%
%age of Grade 1 calls attended within 15 minutes	89.2%

Pledge 6 - Answer all non emergency calls promptly. If attendance is needed, agree with the caller an acceptable time to attend

No of non emergency calls	59,590
%age of non emergency calls answered within 10 seconds	92.3%
Scheduling pilot permanent reporting in progress	See

Pledge 7 - Create opportunities to meet them at least once a month to agree or update neighbourhood priorities. Arrange regular meetings, street briefings, mobile police station visits and similar by keeping beat web pages up to date and providing an online postcode search to our communities so that they can be kept up to date

Measure under development - dip sampling of media/communications to be carried out

Pledge 8 - Provide monthly updates on what action we and our partners are taking to make neighbourhoods safer and how the force is performing

Regular neighbourhood performance data is published on the Internet	5 times
Measure under development - other monitoring to be carried out	

Pledge 9 - Agree with victims of crime how often they would like to be kept informed of progress in their case and for how long. Ensure victims have the right to be kept informed at least every month if they wish and for as long as is reasonable

Satisfaction of victims with respect to being kept informed (very / fairly satisfied)	56.0%
% where the victim has been updated on a monthly basis	97.0%
Compliance with victims contact as part of the Victims' Code	See

Pledge 10 - Acknowledge any dissatisfaction with the service brought to our attention within 24 hours of it being reported and ensure that appropriate steps are taken to resolve concerns

Reports of incivility	117
-----------------------	-----

British Crime Survey Confidence Data

SPI 2.2 Force Target

This data is updated by iQuanta approximately every quarter

National Public Confidence Measure

Jun-09	
Hampshire	48.5%
MSG Position	5 of 8
MSG average	49.5%

This data is based on 'The police and local council are dealing with the anti-social behaviour and crime issues that matter in this area'

The Home Office has set a target to achieve a 12% improvement by 2012 against the baseline of 47.3%

This year's required improvement is 4%

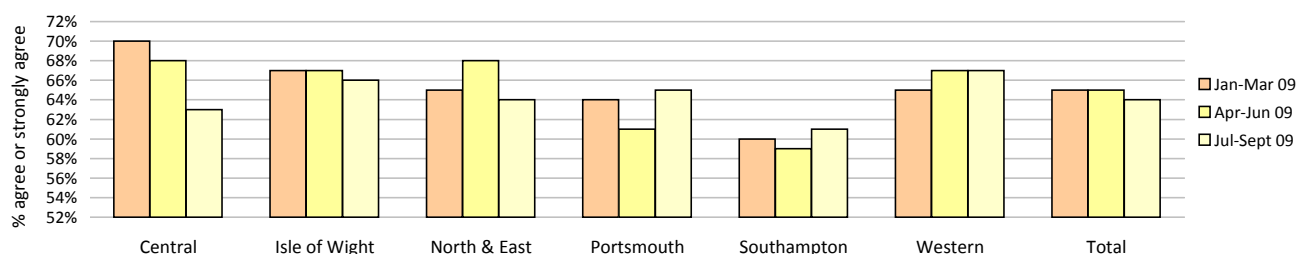
Local Confidence Survey Data

Figures relate to the percentage of respondents who agree or strongly agree with the question.

Hampshire's local surveys have a confidence level of +/-4%. This means that changes of less than 4% may not reflect a real change in performance.

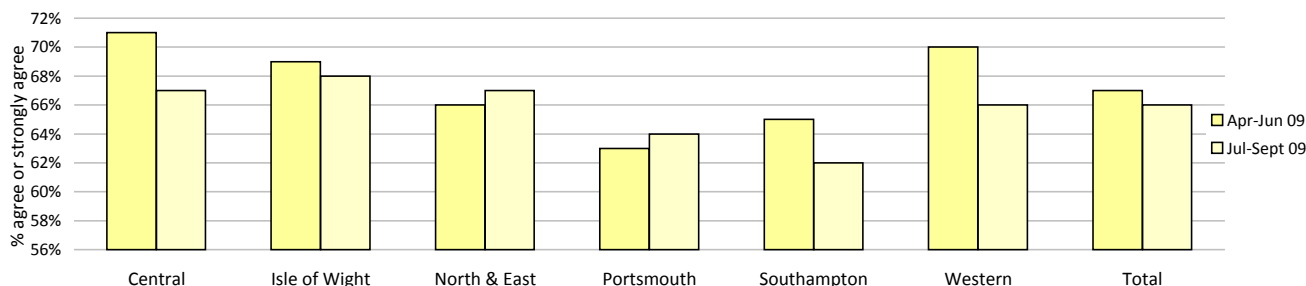
The police and local council are dealing with the anti-social behaviour and crime issues that matter in this area

	Central	Isle of Wight	North & East	Portsmouth	Southampton	Western	Total	No. Surveys
January - March 2009	70%	67%	65%	64%	60%	65%	65%	3594
April - June 2009	68%	67%	68%	61%	59%	67%	65%	3591
July - September 2009	63%	66%	64%	65%	61%	67%	64%	8128



The police are dealing with the things that matter locally

	Central	Isle of Wight	North & East	Portsmouth	Southampton	Western	Total	No. Surveys
April - June 2009	71%	69%	66%	63%	65%	70%	67%	3591
July - September 2009	67%	68%	67%	64%	62%	66%	66%	8128



Overall satisfaction (user satisfaction survey results)

SPI 1.1 Force Target

Rolling 12 months data relates to: Dec 08 - Nov 09; rolling 3 months data relates to Sep 09 - Nov 09

Overall satisfaction includes burglary, vehicle crime, violent crime and minor injury RTCs

Target 65%	Central	Isle of Wight	North & East	Portsmouth	Southampton	Western	Total	No. Surveys
Rolling 12 months	68%	68%	64%	66%	62%	66%	66%	8289
Rolling 3 months	68%	65%	67%	64%	64%	70%	67%	2187

Being kept informed (user satisfaction survey results)

Rolling 12 months data relates to: Dec 08 - Nov 09; rolling 3 months data relates to Sep 09 - Nov 09

Being kept informed includes burglary, vehicle crime, violent crime and minor injury RTCs

	Central	Isle of Wight	North & East	Portsmouth	Southampton	Western	Total	No. Surveys
Rolling 12 months	59%	59%	55%	55%	52%	58%	56%	8012
Rolling 3 months	58%	57%	56%	56%	53%	61%	57%	2118

Providing an excellent service

Comparative satisfaction of minority ethnic groups

SPI 1.3

Data relates to interviews which took place Sep 09 - Nov 09

These figures are for overall satisfaction for burglary, vehicle crime, violent crime, minor injury RTCs and racist incidents

	Completely and very satisfied	Completely, very and fairly satisfied
White	66.3%	84.1%
Minority Ethnic	52.8%	78.1%

Satisfaction of victims of racist incidents

SPI 1.2

These figures relate to interviews which took place Oct 08 - Sep 09; these will be updated quarterly

Racist incident overall satisfaction = % completely or very satisfied

	Central	Isle of Wight	North & East	Portsmouth	Southampton	Western	Total
%	67%	33%	56%	63%	54%	52%	58%
Number of surveys	27	3	34	40	52	21	177

MSG information for user satisfaction

iQuanta data for MSG for the 12 months up to June 09 (iQuanta calculate satisfaction % based on those responding that they are completely, very or fairly satisfied)

	Previous MSG position	Current MSG position	Change		Previous MSG position	Current MSG position	Change
<u>Vehicle crime</u>				<u>Burglary</u>			
Ease of contact	2/8	2/8	↔	Ease of contact	2/8	3/8	↓
Actions taken	4/8	4/8	↔	Actions taken	3/8	4/8	↓
Follow up	4/8	4/8	↔	Follow up	1/8	1/8	↔
Treatment	4/8	6/8	↓	Treatment	3/8	3/8	↔
OVERALL	4/8	4/8	↔	OVERALL	2/8	2/8	↔

	Previous MSG position	Current MSG position	Change		Previous MSG position	Current MSG position	Change
<u>Violent crime</u>				<u>RTC (minor injury)</u>			
Ease of contact	2/8	2/8	↔	Ease of contact	1/8	4/8	↓
Actions taken	1/8	2/8	↓	Actions taken	2/8	1/8	↑
Follow up	5/8	6/8	↓	Follow up	4/8	4/8	↔
Treatment	2/8	3/8	↓	Treatment	2/8	3/8	↓
OVERALL	2/8	3/8	↓	OVERALL	2/8	3/8	↓

All users (excluding racist incidents)

	Previous MSG position	Current MSG position	Change
Ease of contact	4/8	1/8	↑
Actions taken	2/8	4/8	↓
Follow up	3/8	3/8	↔
Treatment	2/8	3/8	↓
OVERALL	2/8	3/8	↓

Responding to victims of crime

Pledge Point 9

Summary results of Dip-sample Victim Code Compliance checks

(latest month for available data followed by YTD)

% where victim was informed within 5 days of an investigation being closed

	Central	Isle of Wight	North & East	Portsmouth	Southampton	Western	Crime	Force
October 2009	100%	100%	100%	100%	100%	100%	100%	100%
YTD	100%	100%	100%	99%	100%	99%	100%	100%

% where the victim has been updated on a monthly basis (if applicable)

	Central	Isle of Wight	North & East	Portsmouth	Southampton	Western	Crime	Force
October 2009	100%	95%	95%	100%	100%	100%	100%	99%
YTD	99%	93%	91%	99%	100%	100%	100%	97%

% where the victim was notified upon filing (if applicable)

	Central	Isle of Wight	North & East	Portsmouth	Southampton	Western	Crime	Force
October 2009	100%	100%	100%	100%	100%	100%	100%	100%
YTD	97%	98%	95%	99%	100%	99%	100%	98%

Note: Victim Code Compliance data is published one month in arrears

Note: Absence of data for Operations OCU - the only crime investigations that are retained for resolution by 8 OCU officers are public order or drug offences where the victim is 'The State'. Other crimes are transferred to 'TO' OCUs for any further investigation required. Road traffic collisions resulting in death could be included but this is a small sample. The option to dip-sample other RTCs (minor and serious injury) for contact with injured or aggrieved parties could be used but these are not within the requirements of the Victims' Code. This would only include RPU in the sample and not other 8 OCU teams

Providing an excellent service

Victim support status for crimes

YTD to November 2009	Central	Isle of Wight	North & East	Portsmouth	Southampton	Western	Total	Total %
Victim informed of VSS accepted	1994	510	1949	1433	2673	1801	10360	10.36%
Victim informed of VSS declined	13596	3918	11868	9295	12516	10535	61728	61.75%
VSS aware	544	128	366	186	227	794	2245	2.25%
Victimless crime	4924	1956	4579	4713	4274	4270	24716	24.72%
Not stated	16	76	166	396	240	26	920	0.92%
Total crimes	21074	6588	18928	16023	19930	17426	99969	N/A
% referred	12.04%	9.68%	12.23%	10.10%	14.55%	14.89%	12.61%	N/A

Month of November 2009	Central	Isle of Wight	North & East	Portsmouth	Southampton	Western	Total	Total %
Victim informed of VSS accepted	229	54	236	153	272	226	1170	10.24%
Victim informed of VSS declined	1475	357	1340	1054	1445	1170	6841	59.87%
VSS aware	35	7	47	15	38	64	206	1.80%
Victimless crime	534	155	553	603	530	525	2900	25.38%
Not stated	2	15	87	91	90	25	310	2.71%
Total crimes	2275	588	2263	1916	2375	2010	11427	N/A
% referred	11.60%	10.37%	12.51%	8.77%	13.05%	14.43%	12.04%	N/A

Letters of appreciation

	Central	Isle of Wight	North & East	Portsmouth	Southampton	Western	Crime	Operations	Other	Total
April 2009	9	5	13	27	0	5	5	13	11	88
May 2009	10	11	13	0	3	11	2	6	31	87
June 2009	9	13	12	3	7	11	15	3	19	92
July 2009	21	7	24	10	3	7	11	0	0	83
August 2009	21	11	13	6	4	11	13	41	3	123
September 2009	19	9	8	10	1	7	17	6	6	83
October 2009	9	6	12	6	10	7	13	0	0	63
Total	98	62	95	62	28	59	76	69	70	619

Note: These figures are published one month in arrears

Reports of incivility

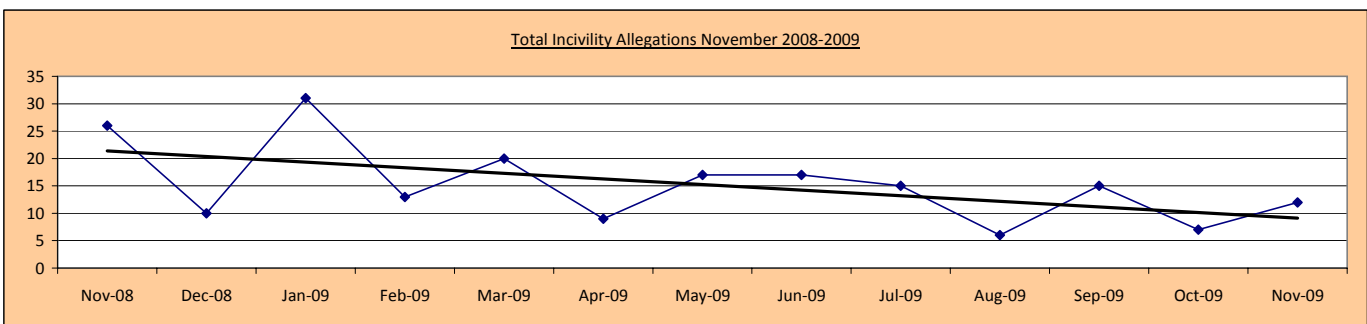
Pledge Point 10

	Central	Isle of Wight	North & East	Portsmouth	Southampton	Western	Crime	Operations	Other	Total
April 2009	2	3	1	3	0	2	0	6	0	17
May 2009	2	4	5	1	2	3	0	1	1	19
June 2009	7	2	1	0	0	3	1	4	0	18
July 2009	1	2	1	3	1	2	3	5	0	18
August 2009	0	1	1	0	4	0	3	0	0	9
September 2009	0	1	2	7	3	1	2	1	0	17
October 2009	1	0	1	0	3	0	0	1	1	7
November 2009	1	1	1	2	1	2	0	4	0	12
Total	14	14	13	16	14	13	9	22	2	117

NOTE: OCU complaints totals may include complaints regarding officers who are serving within the area but are not located at that OCU

NOTE: Data/figures may change due to additional or new information and there may be multiple allegations per complaint

By month	Jan 09	Feb 09	Mar 09	Apr 09	May 09	Jun 09	Jul 09	Aug 09	Sep 09	Oct 09	Nov 09
Incivility	31	13	20	9	17	17	15	6	15	7	12



This graph shows the downward trend for the volume of incivility allegations. The "Linear (incivility)" shows the trajectory of this downward trend

Allegations and their resolutions

Data for November 2009

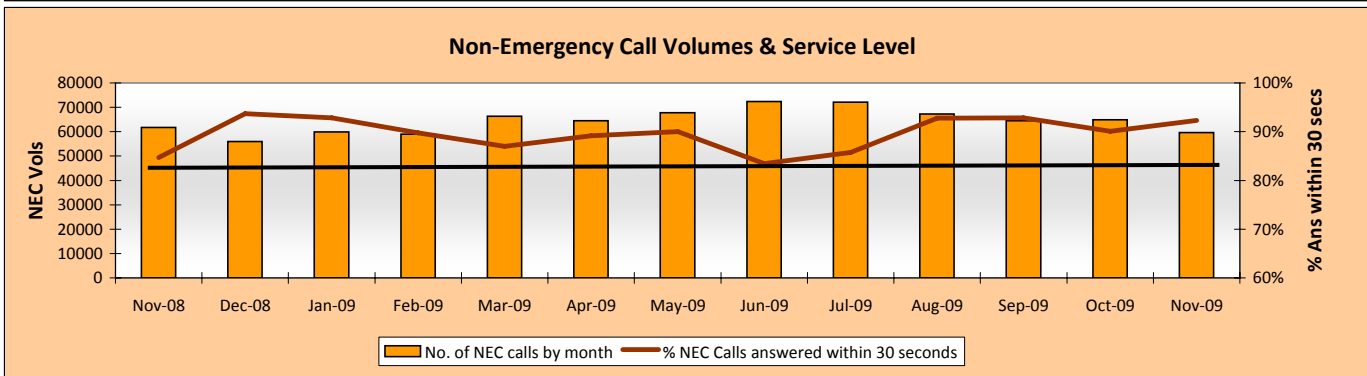
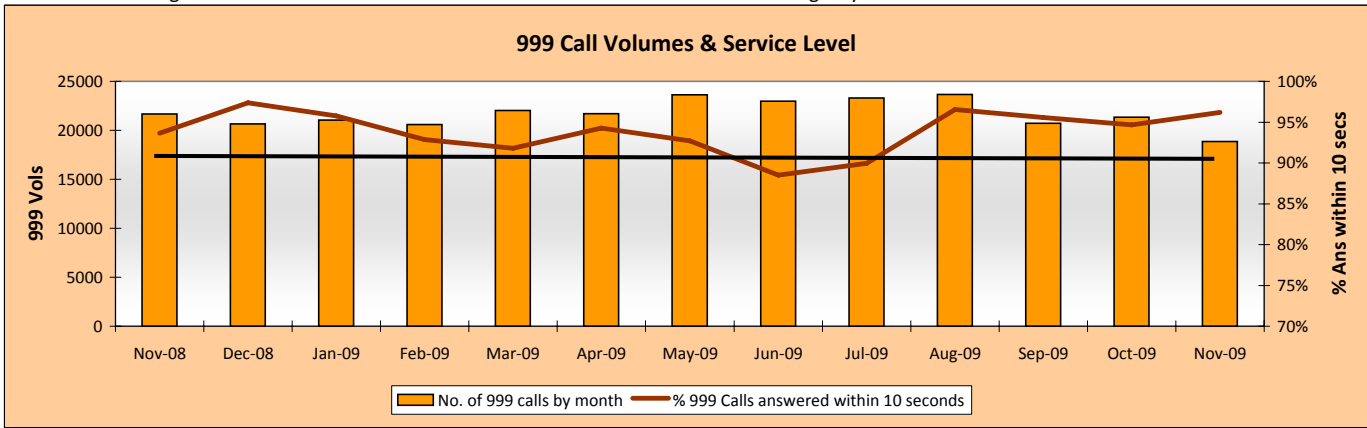
Locally resolved by OCU	31
Locally resolved by PSD	8
Withdrawn	8
Dispensed by IPCC	1
Unsubstantiated	20
Substantiated	6
Total	74

Providing an excellent service

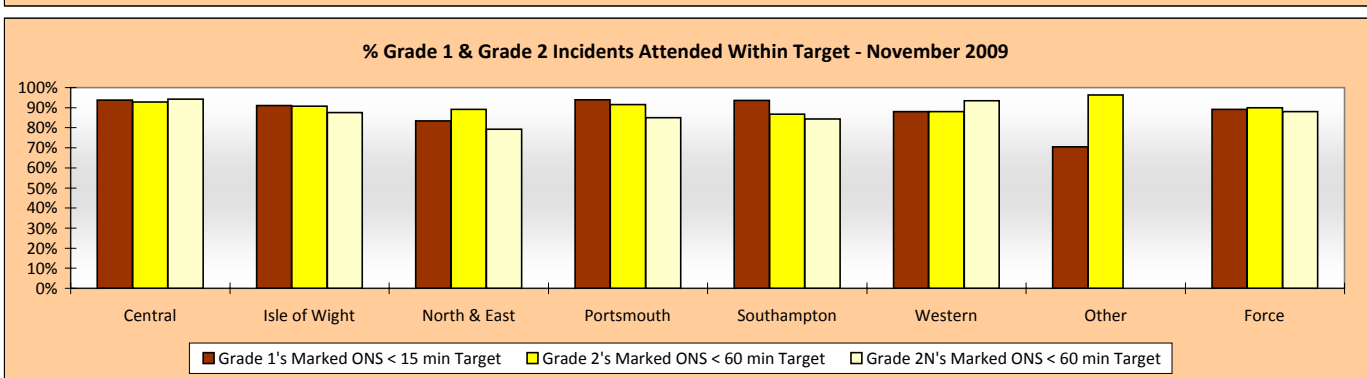
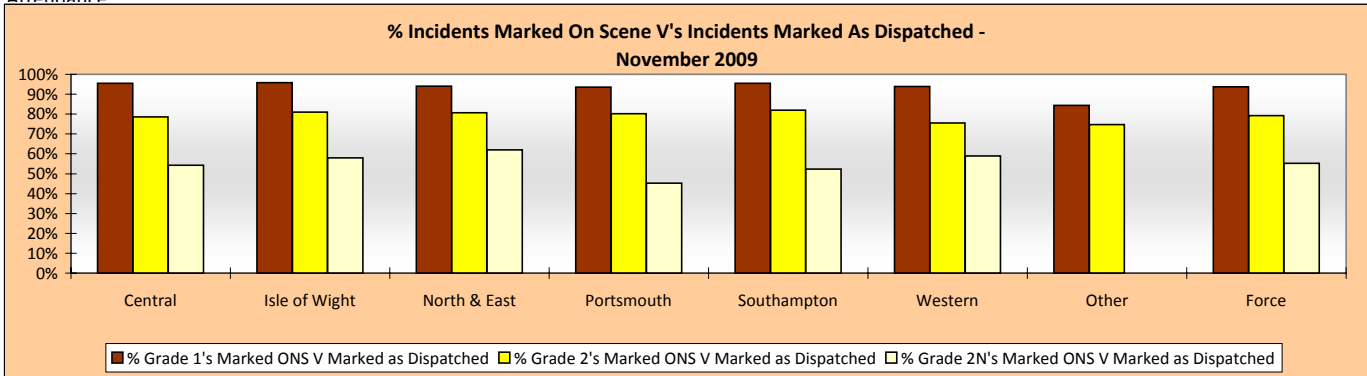
Responding to public contact

Pledge Points 5 & 6

Call Volumes: Target is to answer 90% of 999 calls within 10 seconds and 90% of Non-Emergency calls within 30 seconds



Officers Attended Within Target: This is the time from an incident being created to the 1st Officer being marked on scene on Altaris. The % of Officers attending within target is based on the number of incidents marked on scene within target vs. the number of incidents marked on scene. If an incident is marked as having an officer dispatched, but is then subsequently not marked as On Scene, these incidents are excluded from the % Attendance



Use of Scheduled Appointments

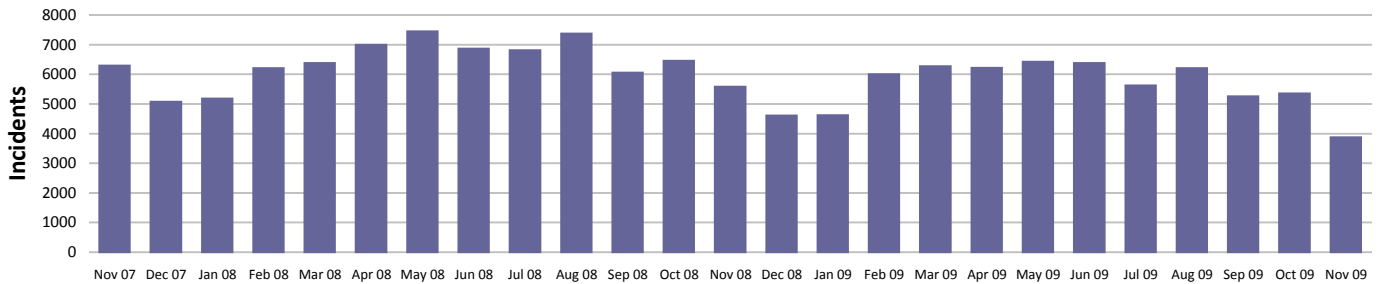
November 2009	Available Slots	Withdrawn by OCU	% Withdrawn	No. Actual Available	Appoint.'s Scheduled	% Appoint.'s Used
Central	727	18	2%	709	277	39%
Isle of Wight	171	11	6%	160	143	89%
North & East	263	13	5%	250	162	65%
Portsmouth	283	81	29%	202	149	74%
Southampton	750	58	8%	692	160	23%
Western	354	85	24%	269	135	50%
Force	2,548	266	10%	2,282	1,026	45%

An active presence in every neighbourhood

Rowdy & nuisance behaviour

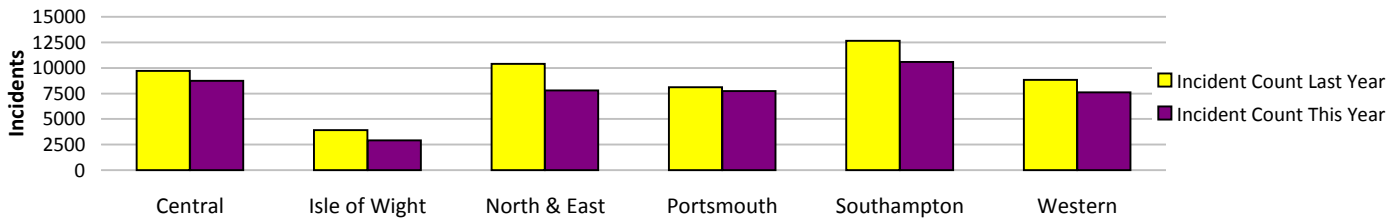
Force Target

This year the decision has been made to use RMS as the source of this data, as opposed to the NSIR return data (the figures published in the 2008/2009 Force Performance Summary used the NSIR data)



Incidents	Central	Isle of Wight	North & East	Portsmouth	Southampton	Western	Total
YTD Incidents	8731	2902	7803	7723	10580	7604	45343
YTD Target	9292	3576	9689	7654	11819	8179	50209
YTD 08/09 Incidents	9723	3905	10387	8096	12660	8821	53592
This month	735	209	681	673	999	580	3877
% change from 08/09	-10.20%	-25.69%	-24.88%	-4.61%	-16.43%	-13.80%	-15.39%

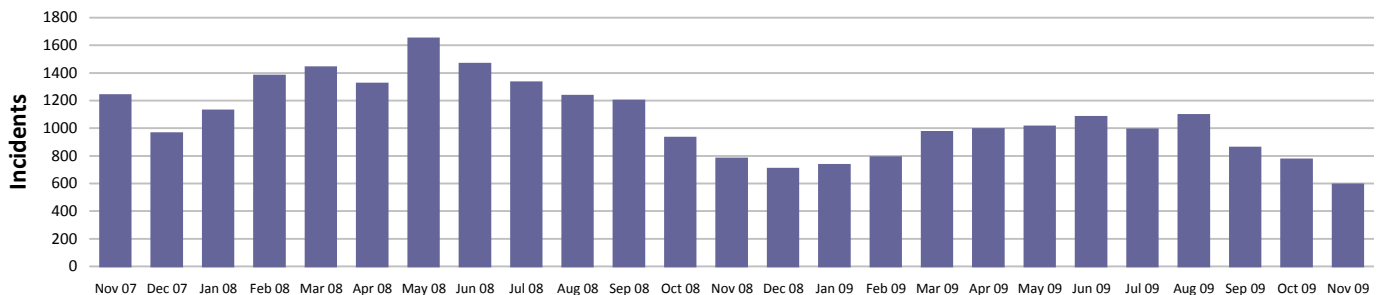
Rowdy & nuisance behaviour relates to occurrence types: Inappropriate use of Fireworks, Rowdy & Inconsiderate, Substance Misuse and Street Drinking



Vehicle nuisance/inappropriate vehicle use

Force Target

This year the decision has been made to use RMS as the source of this data, as opposed to the NSIR return data (the figures published in the 2008/2009 Force Performance Summary used the NSIR data)



Incidents	Central	Isle of Wight	North & East	Portsmouth	Southampton	Western	Total
YTD Incidents	1761	541	1522	718	1422	1437	7401
YTD Target	2327	669	2034	862	1892	2224	10008
YTD 08/09 Incidents	2307	596	1890	782	2013	2327	9915
This month	135	36	123	59	130	111	594
% change from 08/09	-23.67%	-9.23%	-19.47%	-8.18%	-29.36%	-38.25%	-25.36%



Note: MSG data is always published a month in arrears.

For an explanation of this data, refer to the Summary on page 2

November 2009

An active presence in every neighbourhood

Safer Neighbourhood Teams (SNT)

Policing pledge 3

Abstractions	Central	Isle of Wight	North & East	Portsmouth	Southampton	Western	Total
April 2009	3.02%	2.32%	3.16%	3.80%	1.63%	3.30%	
May 2009	3.33%	2.95%	2.98%	3.01%	1.88%	2.83%	2.86%
June 2009	3.16%	1.15%	2.54%	4.62%	2.77%	3.40%	3.05%
July 2009	3.44%	2.32%	4.02%	4.92%	3.24%	6.46%	4.16%
August 2009	6.66%	16.17%	11.25%	3.13%	2.08%	3.37%	6.40%
September 2009	3.99%	4.03%	4.41%	1.00%	3.16%	3.64%	3.48%
October 2009	2.74%	1.10%	4.80%	0.86%	1.43%	2.19%	2.44%
November 2009	2.27%	0.50%	3.71%	0.36%	2.53%	1.84%	2.12%

Target = NPT visible & accessible at least 80% of time (maximum 5% abstractions)

In August 2009 a review of Abstraction data was undertaken to ensure a consistent approach was used across the Force. Prior to this date individual OCUs used slightly differing methodology therefore it is not possible to compare the data for April - July with data from August onwards, or to compare the data for individual OCU's with one another prior to August.

Safer Neighbourhood Team Personnel

	Inspector	Sergeant	Constable	PCSO	Total
Central	10	24	89	77	200
IOW	2	8	34	27	71
North and East	10	15	75	67	167
Portsmouth	4	13	48	50	115
Southampton	7	13	59	60	139
Western	7	19	80	64	170
Total	40	92	385	345	862

SNT strength by OCU - Police

	Central	Isle of Wight	North & East	Portsmouth	Southampton	Western
Strength	114.16	41.57	96.9	63.01	76.98	101.8

SNT establishment and strength by OCU - PCSOs

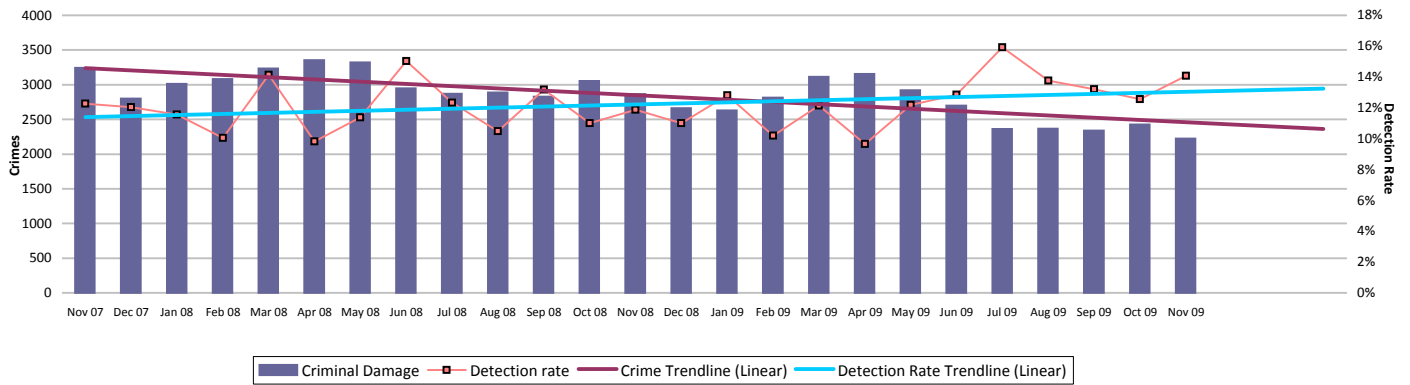
	Central	Isle of Wight	North & East	Portsmouth	Southampton	Western
Establishment	74	28	67	50	59	59
Strength	77	26.12	66.4	49.12	59.34	63.05
Vacancies	-3	1.88	0.6	0.88	-0.34	-4.05

Note: Personnel Planning are no longer able to provide 'length of service' information due to the implementation of the new organisation structure into Delphi. This has meant that all Staff and Police Officers have a position start date of 8 July 2009

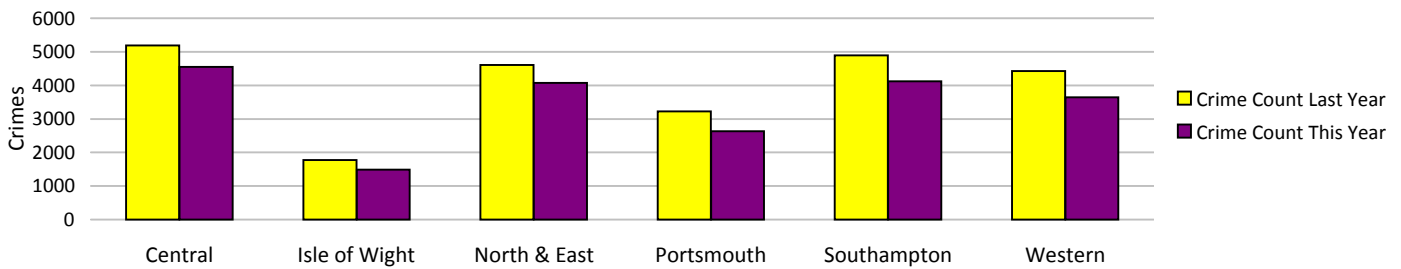
An active presence in every neighbourhood

Criminal damage

Force Target

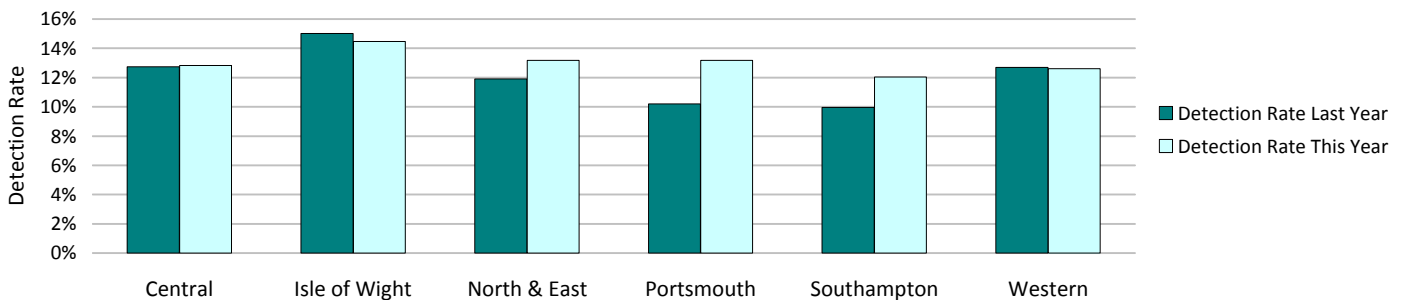


Crimes	Central	Isle of Wight	North & East	Portsmouth	Southampton	Western	Total
YTD Crimes	4548	1486	4074	2635	4119	3642	20504
YTD Target	5046	1677	4398	3102	4435	4228	22886
YTD 08/09 Crimes	5187	1778	4608	3227	4898	4427	24125
This month	438	161	487	293	429	417	2225
% change from 08/09	-12.32%	-16.42%	-11.59%	-18.35%	-15.90%	-17.73%	-15.01%
MSG position	14 of 15	9 of 15	10 of 15	10 of 15	14 of 15	8 of 15	8 of 8
OCU actual	3.52	3.92	3.11	4.73	6.35	3.15	3.86
MSG average	3.20	3.79	3.04	4.33	4.88	3.20	3.51



Detections	Central	Isle of Wight	North & East	Portsmouth	Southampton	Western	Total
YTD Detection Rate	12.82%	14.47%	13.18%	13.17%	12.04%	12.60%	12.86%
This month	14.84%	19.88%	10.06%	16.38%	15.62%	12.47%	14.07%
YTD 08/09 Detections	12.74%	15.02%	11.91%	10.20%	9.96%	12.69%	11.84%
MSG position	9 of 15	8 of 15	10 of 15	5 of 15	10 of 15	10 of 15	7 of 8
OCU actual	12.42%	13.69%	13.12%	11.86%	10.87%	12.11%	12.19%
MSG average	13.29%	14.36%	14.22%	11.40%	11.93%	13.60%	14.30%

Note: Detections refer to Sanction Detections ONLY



Note: MSG data is always published a month in arrears.

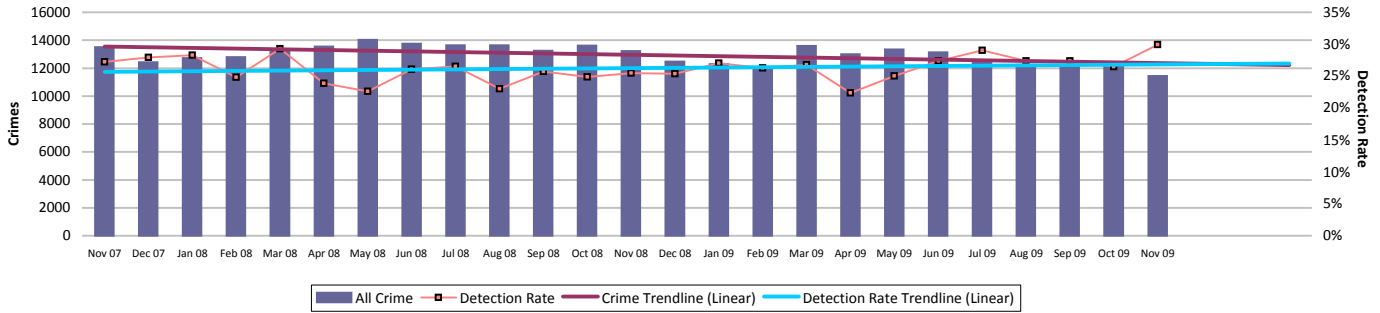
For an explanation of this data, refer to the Summary on page 2

November 2009

Catching criminals and managing offenders

All crime

Force Target



Crimes	Central	Isle of Wight	North & East	Portsmouth	Southampton	Western	Total
YTD Crimes	21075	6588	18929	16023	19931	17428	99974
YTD Target	22141	7084	20571	16936	22790	19131	108653
YTD 08/09 Crimes	22071	7357	20498	16782	22478	19501	108687
This month	2275	588	2263	1916	2376	2010	11428
% change from 08/09	-4.51%	-10.45%	-7.65%	-4.52%	-11.33%	-10.63%	-8.02%
MSG position	12 of 15	12 of 15	10 of 15	13 of 15	13 of 15	7 of 15	6 of 8
OCU actual	17.37	18.62	15.95	29.69	31.20	15.21	19.71
MSG average	15.96	16.97	15.38	23.87	26.19	15.27	18.04



Detections	Central	Isle of Wight	North & East	Portsmouth	Southampton	Western	Total
YTD Detection Rate	24.80%	32.19%	27.32%	28.00%	26.75%	25.56%	26.80%
This month	27.65%	49.15%	28.41%	33.61%	28.20%	27.06%	29.92%
YTD 08/09 Detections	23.62%	33.11%	25.68%	25.18%	23.65%	22.82%	24.75%
Detection Targets	25.00%	30.00%	25.50%	25.50%	25.00%	25.00%	25.00%
MSG position	12 of 15	7 of 15	9 of 15	5 of 15	8 of 15	12 of 15	6 of 8
OCU actual	24.33%	31.98%	26.97%	26.57%	25.76%	25.53%	26.17%
MSG average	27.48%	30.28%	28.67%	25.39%	26.17%	26.85%	28.78%

Note: Detections refer to Sanction Detections ONLY

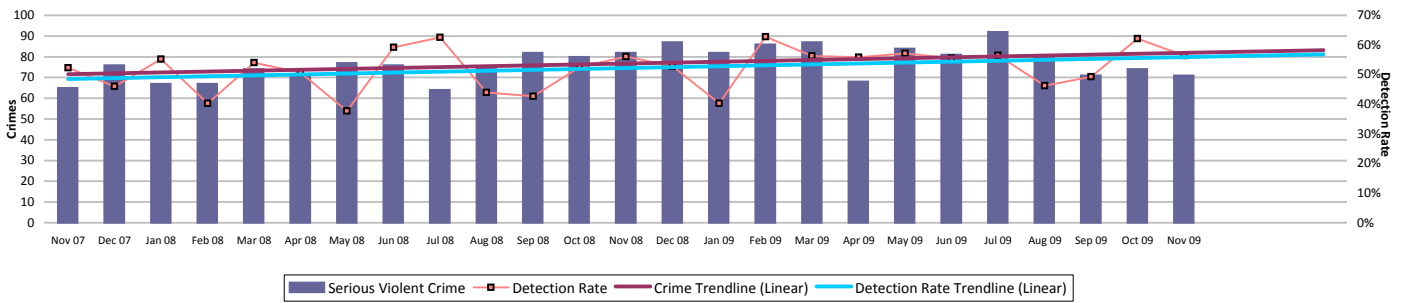


Catching criminals and managing offenders

Serious violent crime

SPI 5.1 Force Target

Serious violent crime consists of crimsec codes 1, 2, 4.1-4.4, 4.6, 4.8, 5A, 5B, 5C, 8F, 8H and 37.1



Crimes	Central	Isle of Wight	North & East	Portsmouth	Southampton	Western	Total
YTD Crimes	103	46	112	100	176	84	621
YTD Target	115	42	96	122	157	74	606
YTD 08/09 Crimes	127	39	83	101	160	97	607
This month	10	1	18	13	21	8	71
% change from 08/09	-18.90%	17.95%	34.94%	-0.99%	10.00%	-13.40%	2.31%
MSG position	9 of 15	7 of 15	12 of 15	3 of 15	4 of 15	7 of 15	4 of 8
OCU actual	0.09	0.13	0.10	0.18	0.22	0.07	0.12
MSG average	0.10	0.14	0.08	0.28	0.30	0.09	0.12



Detections	Central	Isle of Wight	North & East	Portsmouth	Southampton	Western	Total
YTD Detection Rate	68.93%	54.35%	61.61%	48.00%	42.61%	63.10%	54.91%
This month	100.00%	200.00%	61.11%	46.15%	23.81%	75.00%	56.34%
YTD 08/09 Detections	54.33%	76.92%	62.65%	40.59%	44.38%	44.33%	50.41%
Detection Targets	57.00%	60.00%	56.00%	41.00%	45.00%	50.00%	50.00%
MSG position	3 of 15	4 of 15	6 of 15	3 of 15	1 of 15	6 of 15	1 of 8
OCU actual	63.40%	55.41%	57.89%	46.32%	50.22%	59.03%	54.62%
MSG average	55.17%	50.52%	56.86%	39.80%	41.28%	59.16%	48.25%

Note: Detections refer to Sanction Detections ONLY



Serious Violent offences OBJ

SPI 6.1

Data to Aug. 2009

	Recorded Crime		Total OBJTs		Hampshire		Rolling Average	
	Month	RA	Month	RA	Month	RA	MSG	E&W
Attempted murder	2	13	0	3	0.0%	23.1%	16.8%	21.7%
Death by aggravated vehicle taking	0	0	0	0	0.0%	0.0%	0.0%	76.9%
Causing death by dangerous driving etc	1	11	1	15	100.0%	136.4%	81.2%	74.4%
Homicide and child destruction	4	21	0	18	0.0%	85.7%	123.5%	132.4%
Wounding and GBH without intent	72	961	15	222	20.8%	23.1%	23.3%	19.5%

	Convictions	Caution	TICs	Cannabis Warning	PNDs
	Rolling 12 month Average				
Attempted murder	3	0	0	0	0
Death by aggravated vehicle taking	0	0	0	0	0
Causing death by dangerous driving etc	15	0	0	0	0
Homicide and child destruction	18	0	0	0	0
Wounding and GBH without intent	216	6	0	0	0

RA = Rolling Annual
E&W = England & Wales

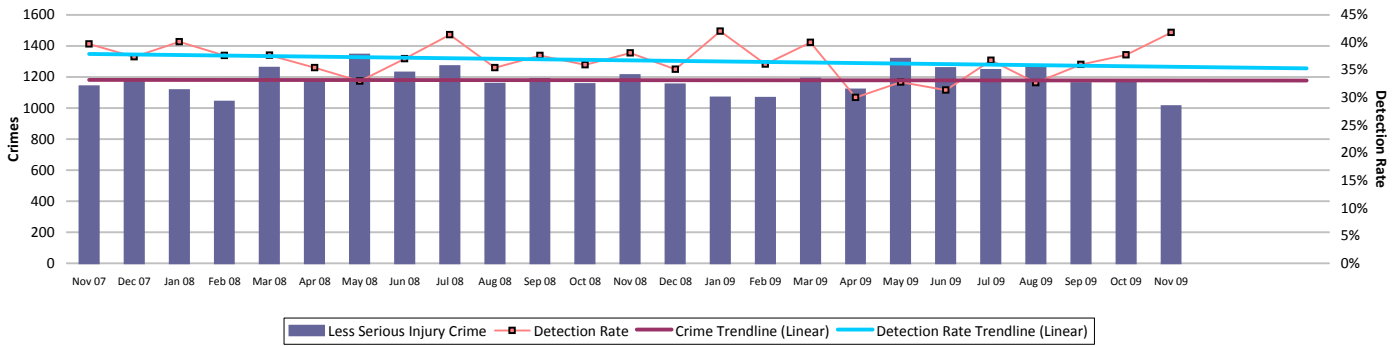
Note: MSG data is always published a month in arrears. For an explanation of this data, refer to the Summary on page 2

Catching criminals and managing offenders

Assault with less serious injury

SPI 5.3 Force Target

Assault with less serious injury consists of crimsec codes 8G and 8J

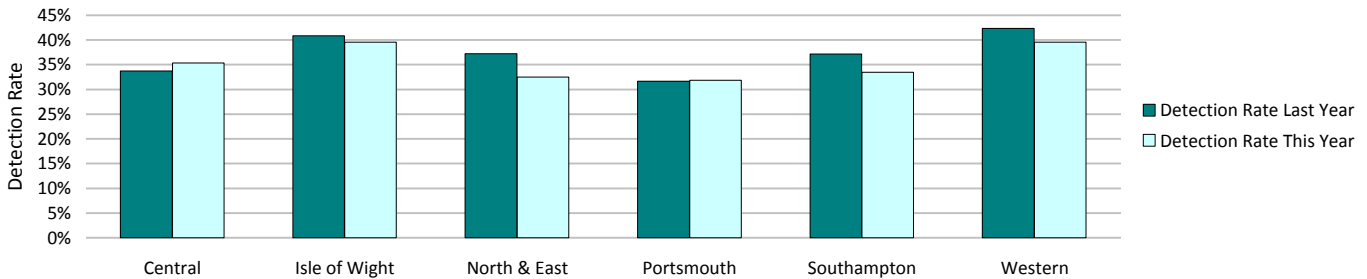


Crimes	Central	Isle of Wight	North & East	Portsmouth	Southampton	Western	Total
YTD Crimes	1964	629	1557	1755	2181	1468	9554
YTD Target	1940	649	1634	1333	2173	1492	9221
YTD 08/09 Crimes	2036	712	1652	1418	2398	1512	9728
This month	213	53	163	198	242	143	1012
% change from 08/09	-3.54%	-11.66%	-5.75%	23.77%	-9.05%	-2.91%	-1.79%
MSG position	15 of 15	9 of 15	10 of 15	13 of 15	14 of 15	8 of 15	8 of 8
OCU actual	1.79	1.67	1.28	3.40	3.51	1.38	1.96
MSG average	1.31	1.64	1.21	2.17	2.39	1.37	1.51



Detections	Central	Isle of Wight	North & East	Portsmouth	Southampton	Western	Total
YTD Detection Rate	35.34%	39.59%	32.50%	31.85%	33.47%	39.58%	34.74%
This month	41.78%	43.40%	41.72%	49.49%	33.47%	44.76%	41.80%
YTD 08/09 Detections	33.74%	40.87%	37.23%	31.66%	37.20%	42.33%	36.74%
MSG position	13 of 15	9 of 15	13 of 15	14 of 15	7 of 15	3 of 15	6 of 8
OCU actual	34.36%	42.72%	34.33%	28.67%	35.38%	43.52%	35.55%
MSG average	40.00%	40.00%	40.00%	40.00%	40.00%	40.00%	40.00%

Note: Detections refer to Sanction Detections ONLY

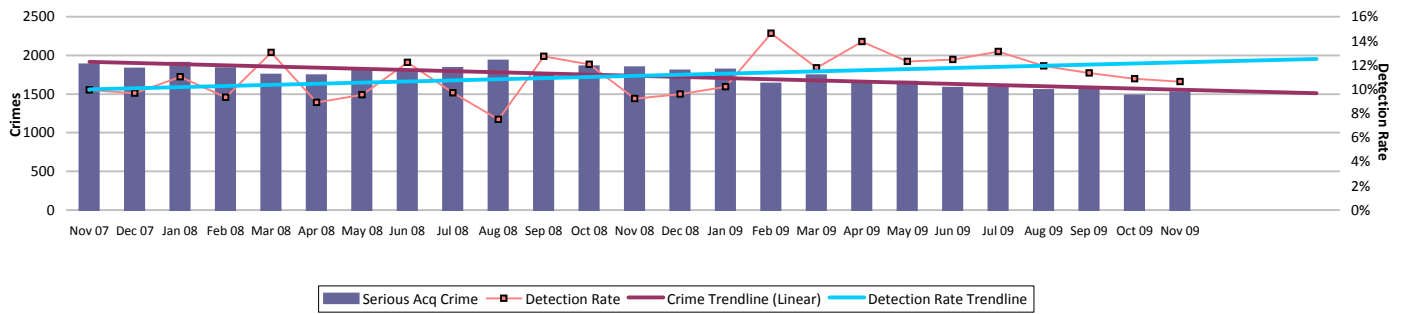


Catching criminals and managing offenders

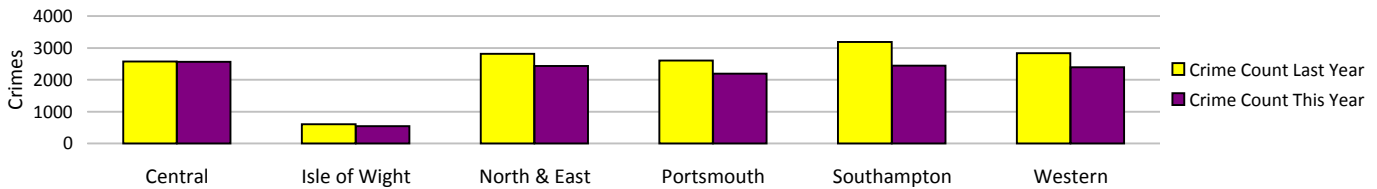
Serious acquisitive crime

SPI 5.2 Force Target

Serious acquisitive crime consists of crimsec codes 28, 29, 34A, 34B, 37/2, 45 and 48



Crimes	Central	Isle of Wight	North & East	Portsmouth	Southampton	Western	Total
YTD Crimes	2564	541	2436	2188	2446	2395	12570
YTD Target	2735	614	2935	2635	3269	2784	14972
YTD 08/09 Crimes	2571	603	2810	2599	3184	2830	14597
This month	309	50	287	277	309	293	1525
% change from 08/09	-0.27%	-10.28%	-13.31%	-15.81%	-23.18%	-15.37%	-13.89%
MSG position	6 of 15	1 of 15	7 of 15	3 of 15	7 of 15	7 of 15	2 of 8
OCU actual	2.13	1.41	2.10	3.99	4.01	2.01	2.48
MSG average	2.54	2.29	2.37	4.86	4.81	2.11	2.97



Detections	Central	Isle of Wight	North & East	Portsmouth	Southampton	Western	Total
YTD Detection Rate	10.37%	15.71%	12.48%	13.07%	12.59%	11.32%	12.09%
This month	10.03%	30.00%	8.71%	7.22%	15.86%	7.51%	10.62%
YTD 08/09 Detections	10.35%	15.26%	9.36%	11.89%	9.27%	9.33%	10.20%
MSG position	11 of 15	9 of 15	12 of 15	6 of 15	9 of 15	12 of 15	5 of 8
OCU actual	11.50%	13.67%	10.92%	12.60%	11.20%	11.89%	11.69%
MSG average	13.28%	15.37%	13.47%	12.21%	13.22%	13.53%	13.43%

Note: Detections refer to Sanction Detections ONLY



Serious Acquisitive offences OBTJ

SPI 6.2

Data to Aug. 2009

	Recorded Crime		Total OBTJs		Hampshire		Rolling Average	
	Month	RA	Month	RA	Month	RA	MSG	E&W
Aggravated burglary in a dwelling	2	43	0	7	0.0%	16.3%	20.5%	23.9%
Aggravated vehicle taking	24	248	21	195	87.5%	78.6%	76.8%	72.4%
Burglary in a dwelling	473	5791	49	997	10.4%	17.2%	15.1%	14.5%
Robbery	85	1147	8	229	9.4%	20.0%	22.3%	17.5%
Theft from a vehicle	750	10446	13	394	1.7%	3.8%	7.8%	8.6%
Theft of a motor vehicle	181	2764	18	320	9.9%	11.6%	12.9%	13.1%

	Convictions	Caution	TICs	Cannabis Warnings	PNDs
Rolling 12 month Average					
Aggravated burglary in a dwelling	7	0	0	0	0
Aggravated vehicle taking	174	21	0	0	0
Burglary in a dwelling	521	33	443	0	0
Robbery	223	3	3	0	0
Theft from a vehicle	204	70	120	0	0
Theft of a motor vehicle	256	38	26	0	0

RA = Rolling Annual
E&W = England & Wales

Note: MSG data is always published a month in arrears. For an explanation of this data, refer to the Summary on page 2

Catching criminals and managing offenders

Serious acquisitive crime breakdown

Robbery

Year to date	Central	Isle of Wight	North & East	Portsmouth	Southampton	Western	Total
Crimes	67	15	114	156	257	97	706
08/09 crimes	74	11	105	155	307	110	762
% change from 08/09	-9.46%	36.36%	8.57%	0.65%	-16.29%	-11.82%	-7.35%
MSG position	4 of 15	4 of 15	9 of 15	2 of 15	9 of 15	9 of 15	2 of 8
Detection rate	47.76%	40.00%	28.07%	29.49%	22.18%	23.71%	27.76%
MSG position	1 of 15	7 of 15	14 of 15	6 of 15	10 of 15	5 of 15	4 of 8
November 2009	Central	Isle of Wight	North & East	Portsmouth	Southampton	Western	Total
Crimes	8	0	18	19	33	13	91
Detection rate	50.00%	N/A	38.89%	26.32%	27.27%	23.08%	31.87%

Dwelling burglary

Year to date	Central	Isle of Wight	North & East	Portsmouth	Southampton	Western	Total
Crimes	776	179	769	645	715	617	3701
08/09 crimes	713	208	875	907	629	664	3996
% change from 08/09	8.84%	-13.94%	-12.11%	-28.89%	13.67%	-7.08%	-7.38%
MSG position	6 of 15	4 of 15	6 of 15	7 of 15	6 of 15	4 of 15	2 of 8
Detection rate	15.59%	16.76%	15.21%	21.86%	19.02%	20.91%	18.21%
MSG position	5 of 15	10 of 15	11 of 15	2 of 15	8 of 15	4 of 15	4 of 8
November 2009	Central	Isle of Wight	North & East	Portsmouth	Southampton	Western	Total
Crimes	98	17	94	75	81	108	473
Detection rate	13.27%	52.94%	7.45%	12.00%	24.69%	5.56%	13.53%

Vehicle crime

Year to date	Central	Isle of Wight	North & East	Portsmouth	Southampton	Western	Total
Crimes	1721	347	1553	1387	1474	1681	8163
08/09 crimes	1784	384	1830	1537	2248	2056	9839
% change from 08/09	-3.53%	-9.64%	-15.14%	-9.76%	-34.43%	-18.24%	-17.03%
MSG position	6 of 15	1 of 15	6 of 15	7 of 15	4 of 15	11 of 15	2 of 8
Detection rate	6.57%	14.12%	9.98%	7.14%	7.80%	7.08%	7.96%
MSG position	13 of 15	9 of 15	10 of 15	11 of 15	10 of 15	13 of 15	5 of 8
November 2009	Central	Isle of Wight	North & East	Portsmouth	Southampton	Western	Total
Crimes	203	33	175	183	195	172	961
Detection rate	6.90%	15.15%	6.29%	3.28%	10.26%	7.56%	7.18%
Detection numbers	14	5	11	6	20	13	69

Theft of a motor vehicle

Year to date	Central	Isle of Wight	North & East	Portsmouth	Southampton	Western	Total
Crimes	391	83	424	269	378	290	1835
MSG position	6 of 15	1 of 15	7 of 15	4 of 15	5 of 15	1 of 15	1 of 8
Detection rate	16.37%	40.96%	17.22%	18.59%	13.49%	22.41%	18.37%
MSG position	10 of 15	2 of 15	13 of 15	5 of 15	9 of 15	3 of 15	4 of 8
November 2009	Central	Isle of Wight	North & East	Portsmouth	Southampton	Western	Total
Crimes	42	7	44	41	60	29	223
Detection rate	14.29%	42.86%	20.45%	12.20%	20.00%	20.69%	18.39%
Detection numbers	6	3	9	5	12	6	41

Theft from a motor vehicle

Year to date	Central	Isle of Wight	North & East	Portsmouth	Southampton	Western	Total
Crimes	1330	264	1129	1118	1096	1391	6328
MSG position	8 of 15	1 of 15	5 of 15	9 of 15	5 of 15	13 of 15	4 of 8
Detection rate	3.68%	5.68%	7.26%	4.38%	5.84%	3.88%	4.95%
MSG position	13 of 15	13 of 15	10 of 15	13 of 15	10 of 15	13 of 15	6 of 8
November 2009	Central	Isle of Wight	North & East	Portsmouth	Southampton	Western	Total
Crimes	161	26	131	142	135	143	738
Detection rate	4.97%	7.69%	1.53%	0.70%	5.93%	4.90%	3.79%
Detection numbers	8	2	2	1	8	7	28

Robbery, dwelling burglary and vehicle crime are the component parts of serious acquisitive crime. These individual crime types do not have targets.

Catching criminals and managing offenders

Gun crime rate

	Central	Isle of Wight	North & East	Portsmouth	Southampton	Western	Total	MSG position 01 09 08 - 31 08 09
YTD November 2009	27	4	11	11	11	9	73	4 of 8
YTD November 2008	20	2	23	12	18	14	89	
% change from 08/09	35.0%	100.0%	-52.2%	-8.3%	-38.9%	-35.7%	-18.0%	

SPI 5.5

Gun crime figures published reflect the APACS technical definition which includes "where the victim is convinced of the presence of a firearm, even if it is concealed and there is evidence of the suspect's intention to create this impression".

NB - the 2009 figures for Gun & Knife crime are to 25th November and DO NOT cover the entire month.

Knife crime rate

	Central	Isle of Wight	North & East	Portsmouth	Southampton	Western	Total	MSG position 01 07 08 - 30 06 09
YTD November 2009	62	21	87	76	109	40	395	3 of 8
YTD November 2008	98	21	88	78	152	63	500	
% change from 08/09	-36.7%	0.0%	-1.1%	-2.6%	-28.3%	-36.5%	-21.0%	

SPI 5.6

Knife = knife or other sharp instrument (including broken glass/bottles) piercing the skin or, for threats and attempts, instruments normally capable of piercing the skin. The measure for counting broken glass/bottles has changed for 09-10 with less occurrences being counted by the Home Office. Knife crime figures published reflect the APACS technical definition which includes "where the victim is convinced of the presence of a knife, even if it is concealed and there is evidence of the suspect's intention to create this impression".

NB - the 2009 figures for Gun & Knife crime are to 25th November and DO NOT cover the entire month.

Serious sexual crime OBJT rate

SPI 6.4

The table below shows % of persons brought to justice for serious sexual crimes against the total number of serious sexual crimes

OBJT Crime category	Mar-09	Apr-09	May-09	Jun-09	Jul-09	Aug-09	Rolling average
Tier 1: Serious Sexual Offences	38%	29%	34%	35%	11%	9%	30%

Murder offences

SPI 5.4

	Central	Isle of Wight	North & East	Portsmouth	Southampton	Western	Total
YTD November 2009	4	2	1	2	2	2	13
YTD Domestic Murders 2009	1	0	0	0	1	1	3
YTD November 2008	1	0	0	1	4	1	7
YTD Domestic Murders 2008	1	0	0	0	3	1	5

FIU1 submissions

	Central	Isle of Wight	North & East	Portsmouth	Southampton	Western	Total
YTD November 2009	151	159	197	124	176	143	950
Number of eligible detections	2518	1196	2609	2496	2554	2114	13487
% submission rate	6%	13%	8%	5%	7%	7%	7%

	Central	Isle of Wight	North & East	Portsmouth	Southampton	Western	Total
November 2009	14	18	43	17	27	31	150
Number of eligible detections	302	181	343	359	326	275	1786
% submission rate	5%	10%	13%	5%	8%	11%	8%

Eligible crimes are those covered by Proceeds of Crime Act (POCA)

Prolific and other Priority Offenders (PPOs) convictions

Number of convictions recorded against identified, prolific and other priority offenders (PPOs)

	Apr 2009	May 2009	June 2009	July 2009	Aug 2009	Sep 2009	Oct 2009	YTD
Persistent Young Offenders	99	78	83	73	49	29	33	444
Priority Prolific Offenders	39	23	32	23	33	35	25	210
Persistent Priority Prolific Young Offenders	6	2	6	4	2	1	1	22
Young Offenders	195	175	185	207	172	209	208	1351

Class A drugs sanction detections

Force Target

	Central	Isle of Wight	North & East	Portsmouth	Southampton	Western	Total
YTD November 2009	16	20	62	38	70	69	275
YTD Target	33.42	26.74	53.48	53.48	66.85	33.42	267.40
November 2009	1	9	30	10	16	1	67

Drug seizures information

	Central	Isle of Wight	North & East	Portsmouth	Southampton	Western	Total
YTD October 2009	754	1088	592	404	653	345	3836
YTD October 2008	625	715	354	411	276	292	2673
% change from 08/09	20.6%	52.2%	67.2%	-1.7%	136.6%	18.2%	43.5%

Note: This data is produced one month in arrears

Number of Organised Crime Groups (OCGs) disrupted

Force Target

YTD November 2009	2008/2009	2009/2010	YTD Target
Number of OCGs identified and mapped	37	39	
Number of OCGs disrupted or partially disrupted through Crime OCU activity	24	31	16.7
Number of OCGs subject to tactical activity	78	85	

Note: MSG data is always published a month in arrears. For an explanation of this data, refer to the Summary on page 2

Protecting our communities

Domestic violence and abuse is defined by ACPO as: 'any incidence of threatening behaviour, violence or abuse (psychological, physical, sexual, financial or emotional) between adults, aged 18 and over, who are or have been intimate partners or family members, regardless of gender or sexuality'

Domestic violence and abuse crime arrest rate

Force Target

Domestic violence arrest rate is based on records where the occurrence has been flagged as a domestic, and has an arrest event or a linked person reason of arrested.

Target >80%

Year to Date	Central	Isle of Wight	North & East	Portsmouth	Southampton	Western	Total
Domestic crimes	1349	410	1018	921	1319	978	5995
Domestic crime detection rate	33.21%	42.44%	39.10%	38.11%	33.59%	40.80%	36.91%
Domestic crime arrests	1012	313	818	743	1060	747	4693
Domestic crime arrest rate	75.02%	76.34%	80.35%	80.67%	80.36%	76.38%	78.28%

Month	Central	Isle of Wight	North & East	Portsmouth	Southampton	Western	Total
Domestic crimes	142	39	122	110	167	90	670
Domestic crime detection rate	34.51%	41.03%	40.98%	42.73%	38.32%	51.11%	40.60%
Domestic crime arrests	101	31	98	80	129	74	513
Domestic crime arrest rate	71.13%	79.49%	80.33%	72.73%	77.25%	82.22%	76.57%

Police No Further Action (NFA) Rate

Incidents classified as Domestic Violence crimes

Year to Date	Central	Isle of Wight	North & East	Portsmouth	Southampton	Western	Total
Domestic Crimes	This data is currently not available. Work is continuing to provide this data in the coming months.						
Domestic Crimes NFA'd							
Domestic Crimes NFA Rate							

Month	Central	Isle of Wight	North & East	Portsmouth	Southampton	Western	Total
Domestic Crimes	This data is currently not available. Work is continuing to provide this data in the coming months.						
Domestic Crimes NFA'd							
Domestic Crimes NFA Rate							

Repeat incidents of domestic violence cases reviewed at MARAC

SPI 14.1

A Multi Agency Risk Assessment Conference (MARAC) meet to manage the highest risk domestic abuse cases. A 'case' = a victim & perpetrator(s) being reviewed at the same MARAC. Once a case has been to MARAC, it remains flagged as a MARAC case for 12 mths after the most recent MARAC review. A repeat case is when a case reviewed at MARAC has also been reviewed at the same MARAC within the preceding 12 mths. For further information on this measure please refer to Home Office Guidance on Performance Indicators for Policing & Community Safety 09/10.

Year to Date	Central	Isle of Wight	North & East	Portsmouth	Southampton	Western	Total
Number of cases reviewed at MARAC	No data received for November profile						
Repeat cases reviewed at MARAC							
% Repeat cases							

Hate crime detection rate

Force Target

Target >45%

Year to Date	Central	Isle of Wight	North & East	Portsmouth	Southampton	Western	Total
Incidents	221	44	202	327	496	176	1466
Crimes	166	33	140	214	327	122	1002
Detections	83	14	72	105	164	48	486
Detection Rate	50.00%	42.42%	51.43%	49.07%	50.15%	39.34%	48.50%

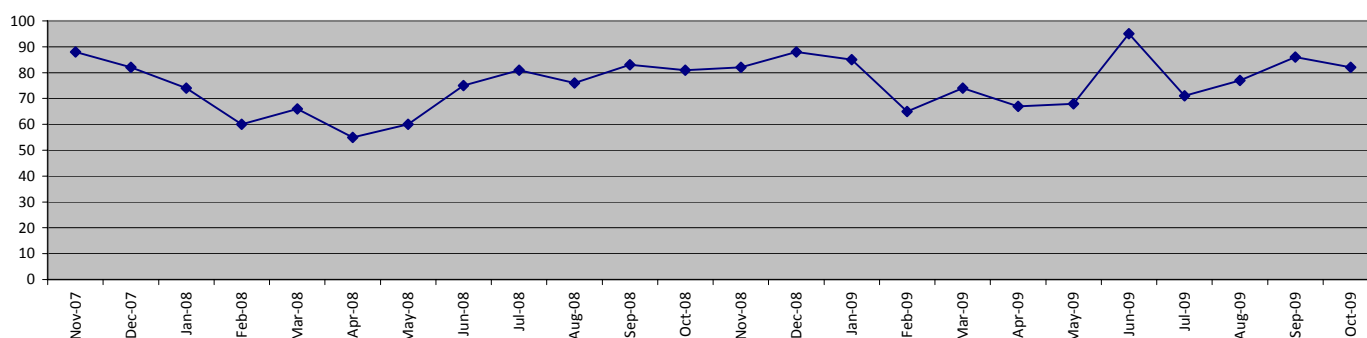
Month	Central	Isle of Wight	North & East	Portsmouth	Southampton	Western	Total
Incidents	15	4	23	33	62	15	152
Crimes	13	5	15	26	44	14	117
Detections	9	1	8	13	27	5	63
Detection Rate	69.23%	20.00%	53.33%	50.00%	61.36%	35.71%	53.85%

Protecting our communities

Road traffic casualties

SPI 9.1 Force Target

Fatal/serious injury casualties - all victims

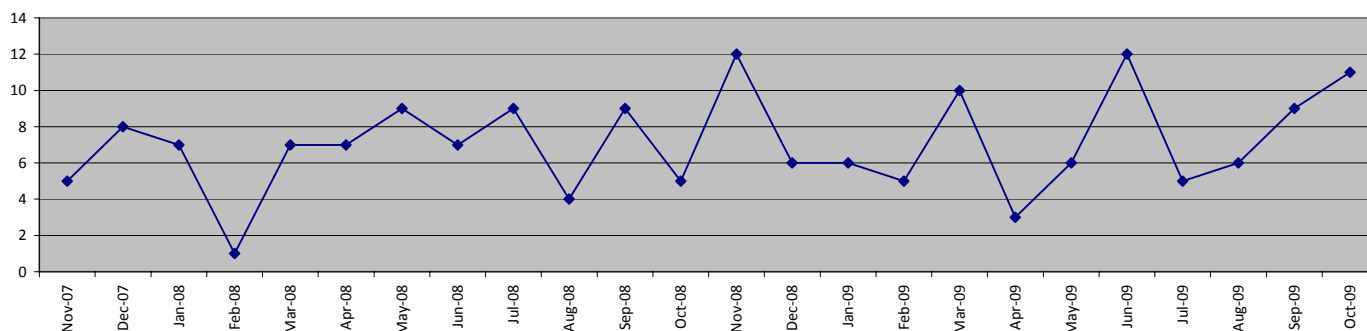


The Force target 2009/2010 is for less than 888 casualties, which equates to less than 519 in 214 days

YTD Oct 2009 = 546 casualties

	Central	Isle of Wight	North&East	Portsmouth	Southampton	Western	Total
April 2009 - October 2009	140	45	106	54	59	142	546
of these, fatalities were	5	1	5	1	0	10	22
April 2008 - October 2008	94	53	105	64	58	137	511

Fatal/serious injury casualties - victims under 16 years



The DETR target is for a 50% reduction in child casualties by 2010 from 164 to 82

	Central	Isle of Wight	North&East	Portsmouth	Southampton	Western	Total
April 2009 - October 2009	14	3	9	7	7	12	52
of these, fatalities were	0	0	0	0	0	0	0
April 2008 - October 2008	9	8	10	6	9	8	50

- Note: YTD numbers may change as the accident record data are updated each month
- Note: The casualties in East Hampshire have all been attributed to North & East OCU in the absence of a breakdown by OCUs
- Note: In October an issue was identified with the data collection for this measure. This resulted in an increase in the figures. The data provided on this page has now been updated.

Protecting our communities

Impaired Driving Interventions									
		Dog Support Unit	Force Support Unit	Roads Policing Unit	Tactical Firearms Support Unit	Other 8 OCU Officers	8 OCU Total	Rest of Force	Force Total
Breath Tests	YTD June - Nov 09	137	74	7601	1063	1	8876	10221	19097
	Nov 09	13	9	827	164	1	1014	1254	2268
	YTD June - Nov 08 ¹	1	54	11149	1666	0	12870	9977	22847
	Nov 08	1	4	1462	268	0	1735	1550	3285
Field Impairment Tests	YTD April - Nov 09	0	0	227	8	0	235	36	271
	Nov 09	0	0	9	1	0	10	3	13
	YTD April - Nov 08	0	0	549	15	1	565	31	596
	Nov 08	0	0	55	0	0	55	3	58

¹ The Drager (breath test) units were implemented in June 2008 therefore no data can be included in these figures for April and May 2008.

Speed Offences										
		Dog Support Unit	Force Support Unit	Roads Policing Unit	Specialist Firearms Officers	Armed Response Vehicles	Other 8 OCU Officers	8 OCU Total	Rest of Force	Force Total
YTD April - October 09		15	2	4778	7	44	7	4853	459	5312
October 09		0	0	777	1	7	1	786	116	902
YTD April - October 08		14	0	5620	21	145	0	5800	350	6150
October 08		7	0	689	3	8	0	707	44	751
November 09 (Provisional)		2	0	444	0	4	0	450	28	478

Mobile Phone Offences										
		Dog Support Unit	Force Support Unit	Roads Policing Unit	Specialist Firearms Officers	Armed Response Vehicles	Other 8 OCU Officers	8 OCU Total	Rest of Force	Force Total
YTD April - October 09		7	8	1796	40	203	0	2054	774	2828
October 09		0	1	260	1	37	0	299	110	409
YTD April - October 08		12	2	2811	38	413	0	3276	1145	4421
October 08		3	1	376	4	58	0	442	128	570
November 09 (Provisional)		0	0	194	6	20	0	220	63	283

Seatbelt Offences										
		Dog Support Unit	Force Support Unit	Roads Policing Unit	Specialist Firearms Officers	Armed Response Vehicles	Other 8 OCU Officers	8 OCU Total	Rest of Force	Force Total
YTD April - October 09		16	2	2281	1	106	0	2406	732	3138
October 09		0	1	275	0	6	0	282	109	391
YTD April - October 08		21	1	4575	3	387	3	4990	1307	6297
October 08		3	0	636	1	38	0	678	119	797
November 09 (Provisional)		0	0	79	0	9	0	88	38	126

Sickness Data

In July Hampshire Constabulary undertook a major upgrade of the software used to provide sickness data. This upgrade has resulted in a significant amount of change to the system and has resulted in sickness data being unavailable in time to publish in this Performance Profile

SPI 13.1 Force Target
SPI 13.2 Force Target

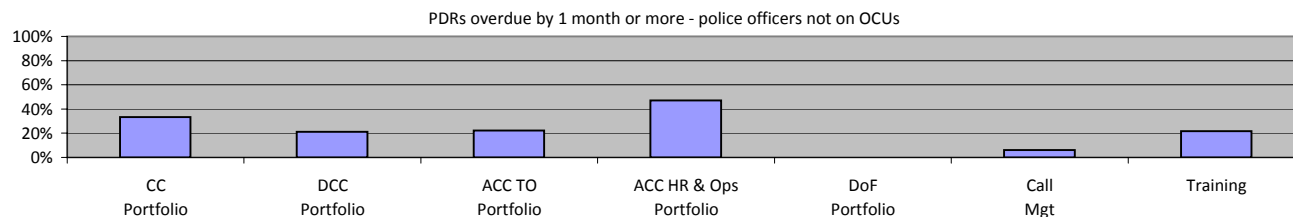
Making the most of our resources

Overdue PDRs

Police officer PDRs - police officers in OCU's



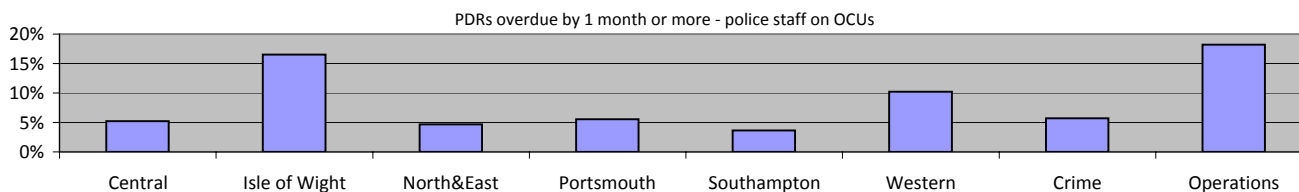
November 2009	Central	Isle of Wight	North & East	Portsmouth	Southampton	Western	Crime	Operations
Population	606	222	570	409	494	531	405	386
Overdue	40	20	19	26	10	23	23	38
% overdue	6.6%	9.0%	3.3%	6.4%	2.0%	4.3%	5.7%	9.8%



November 2009	CC Portfolio	DCC Portfolio	ACC TO Portfolio	ACC HR & Ops Portfolio	DoF Portfolio	Call Mgt	Training
Population	6	47	9	17	N/A	33	55
Overdue	2	10	2	8	N/A	2	12
% overdue	33.3%	21.3%	22.2%	47.1%	N/A	6.1%	21.8%

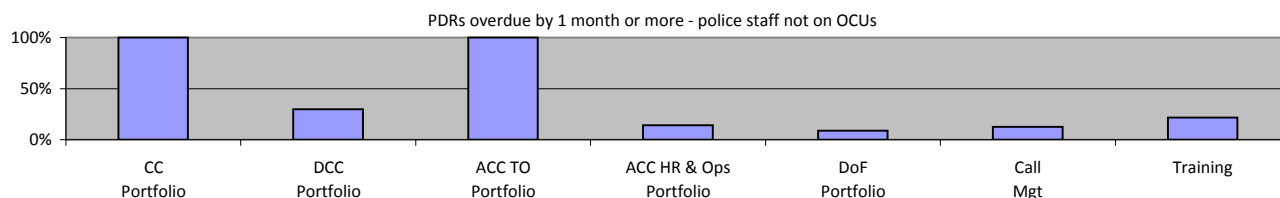
ACC HR and Ops Portfolio excludes Training figures which are reported on separately. No police officers work within DoF Portfolio.

Police staff PDRs - police staff in OCU's



November 2009	Central	Isle of Wight	North&East	Portsmouth	Southampton	Western	Crime	Operations
Population	248	103	214	181	219	206	314	132
Overdue	13	17	10	10	8	21	18	24
% overdue	5.2%	16.5%	4.7%	5.5%	3.7%	10.2%	5.7%	18.2%

Police staff PDRs - police staff not in OCU's



November 2009	CC Portfolio	DCC Portfolio	ACC TO Portfolio	ACC HR & Ops Portfolio	DoF Portfolio	Call Mgt	Training
Population	2	307	2	407	397	145	88
Overdue	2	91	2	58	35	18	19
% overdue	100.0%	29.6%	100.0%	14.3%	8.8%	12.4%	21.6%

ACC HR and Ops Portfolio excludes Training figures which are reported on separately

Making the most of our resources

Budget spend

No update has been received for the November profile. The below position is as published in the October profile. The actual spend to the end of September 2009 was £143.3m. The projected spend for the force at the end of the financial year is £300.212m, which will be an underspend of £2.886m against the agreed budget.

	Central	Isle of Wight	North & East	Portsmouth	Southampton	Western	Crime	Operations
Projected over/(under)spend 2009/2010	-£136,000	£1,000	-£555,000	-£116,000	-£31,000	-£456,000	-£391,000	-£353,000

Efficiency savings

No update has been received for the November profile. The below position is as published in the October profile. The Authority needs to maximise efficiency gains both due to its budgetary constraints and in order to achieve value for money. In addition, there is a national Home Office target to deliver recurring efficiency or productivity gains equivalent to 10.3% of the 2007/08 'Gross Revenue Expenditure' over three years, by the end of 2010/11. Each Authority must set its own challenging target. The Authority and Force are currently working to a target equivalent to the national target, which equates to £33m over the 3 years (an average of £11m per annum). The actual achieved as at 31/03/09 was £9.4m. The current value of efficiency initiatives included in the register is £25.373m

Specialist support

7 OCU	OCU Supported							Total
	Central	Isle of Wight	North & East	Portsmouth	Southampton	Western	Other	
April 2009	2	1	4	4	4	1	0	16
May 2009	1	1	0	3	3	0	0	8
June 2009	4	0	1	2	1	1	0	9
July 2009	4	1	1	1	1	1	0	9
August 2009	3	1	6	0	1	3	0	14
September 2009	2	2	2	1	2	5	0	14
October 2009	0	0	1	2	0	2	0	5
November 2009	1	0	4	0	3	0	0	8
Total	17	6	19	13	15	13	0	83

NOTE: An 'assist' includes assistance that is outside of normal working practices and can encompass practical resources and/or managerial support. For example, it includes support with house to house/investigative enquiries, administrative support, interviewing/statement taking, advice and IT examinations, to name a few. A single assist can involve anything from one member of staff to several from a period of a few hours, to a whole week. An assist does not include phone calls.

8 OCU

8 OCU Commitment to ANPR Operations - April - October 09								
	OCU Supported							Total
	Central	Isle of Wight	North & East	Portsmouth	Southampton	Western	Other*	
No. of Ops	97	8	68	42	61	49	38	363
Arrests	44	3	18	17	47	18	4	151
S.165 Vehicle Seizures	138	10	53	127	149	76	63	616
Impaired Drivers	14	0	8	14	45	10	9	100
Total Results	196	13	79	158	241	104	76	867
Cash/POCA Seizures	Seized by or assisted by 8 OCU ANPR teams (£)							19,175
Drugs Seizures	Seized by or assisted by 8 OCU ANPR teams (approx £)							1,500,120

N.B. Recent court case showed Cocaine to the value of £1.5 million seized by RPU.

8 OCU NON-ANPR Pre-Planned Operations/Tasks/Requests for Resources - April - October 09								
	OCU Supported							Total
	Central	Isle of Wight	North & East	Portsmouth	Southampton	Western	Other*	
No. of Ops	152	71	146	122	245	219	57	1012
Arrests	99	638	125	105	194	121	27	1309
S.165 Vehicle Seizures	45	4	13	26	52	56	28	224
Total Results	144	642	138	131	246	177	55	1533
Cash/POCA Seizures	Seized by or assisted by 8 OCU teams (not ANPR) (£)							167,779
Drugs Seizures	Seized by or assisted by 8 OCU teams (not ANPR) (approx Kgs)							50
Drugs Seizures	Seized by or assisted by 8 OCU teams (not ANPR) (approx Kgs)							16.5

* Other is Mutual Aid or Out of County

Equipping our team to deliver

Financial awareness training

Financial awareness training will be undertaken for budget holders with the aim of ensuring a minimum of 95% of budget holders are trained by the end of the financial year. The target is for at least 95% of all Chief Inspector to Chief Superintendents to be trained by the end of the financial year

	Full Year Apr 09 - Mar 10		Year to Date (Nov 09)	
	Courses Planned	Numbers to be trained	Courses Held	Numbers Trained
Chief Inspector to Chief Superintendent (target)	10	160	8	41
All staff				94

Preparing for frontline supervision

A leadership project is underway and a formal Force leadership target will be established with supporting material to be published here in the coming months

	Full Year Apr 09 - Mar 10		Year to Date (Nov 09)	
	Courses Planned	Numbers to be trained	Courses Held	Numbers Trained
Sergeants Operational Activities	6	108	4	44
Inspectors Statutory Responsibilities	5	70	3	36
First Line Manager - Leadership Part 1	6	96	7	103
First Line Manager - Leadership Part 2	6	96	6	79
First Line Manager - Action Learning Sets	18	108	20	173

Mobile data

The Constabulary has achieved the roll out of 300 mobile data terminals (as required by NPIA). Further data follow in the new year.

Minority ethnic officer recruitment

SPI 3.1

	All recruits	Minority ethnic recruits	%
YTD November 2009	129	4	3.1%

Female officer representation

SPI 3.2

	Male strength	Female strength	%
YTD November 2009	2686.9	1029.5	27.7%