

Performance Profile

April 2011



Summary and index

Summary

2011/12 Reporting Year

This document contains a strategic overview of the Constabulary's performance. It has a variety of performance measures within it. The format of the profile has been aligned to the Policing Priorities identified by the Control Strategy. It provides information on our performance against Force targets. It also aims to provide supplementary information to assist in understanding reasons behind the performance in these areas. It has been designed as a headline document that will enable our customers, both internally and externally, to easily assess performance information for key domains. This year, as last, additional monitoring information within the six domains of the Policing Priorities will be published quarterly - a calendar of publication is located at the bottom of this page. If during a month an issue is identified which needs to be highlighted, this will be done through 'exception reporting'.

A matrix can be found at the front of the profile which reflects our year to date performance against our targets.

The Force is in the process of changing from geographic Operational Command Units (OCUs) to geographic Areas. Accordingly, data is shown for Areas where possible, remaining as OCU if not.

Where applicable, within the document, MSG (Most Similar Group) data is published along with the crime and detection data. MSGs are calculated by the Home Office based on a number of socio-demographic & geographic variables which are strongly linked to crime/incident levels and the fear of crime. These groups provide a benchmark for comparison of crime and detection rates. Below the applicable crime tables there are three rows relating to MSG data. The first provides the MSG position for the Force for that crime type. The second displays Actual, this is the number of offences per 1,000 population. The third row shows the MSG Average which is the total number of offences per 1,000 population divided by the number within the MSG. The same three rows are provided in relation to detection data, where data is provided in % figures rather than per 1,000 population. Due to geographic changes mentioned above, this data is currently only available at Force level.

Please note: iQuanta data is provisional. Within the profile, Hampshire data is published and compared against the MSG average. The other forces within Hampshire's MSG are: Avon and Somerset, Bedfordshire, Essex Hertfordshire, Kent, Sussex and Thames Valley. We are unable to provide figures from iQuanta for these forces, due to the provisional nature of this data.

This document is then taken forward by key stakeholders within the organisation to the Force Performance Review Group, where it is used to highlight areas of good performance and those for development.

This is an evolving document and as such, the contents of which may alter over time and any feedback would be welcomed by the Performance Review Team.

Calendar of Quarterly Reporting

April - Catching criminals & managing offenders and Protecting our communities
May - Making the most of our resources and Equipping our team to deliver
June - Providing an excellent service and An active presence in every neighbourhood
July - Catching criminals & managing offenders and Protecting our communities
August - Making the most of our resources and Equipping our team to deliver
September - Providing an excellent service and An active presence in every neighbourhood
October - Catching criminals & managing offenders and Protecting our communities
November - Making the most of our resources and Equipping our team to deliver
December - Providing an excellent service and An active presence in every neighbourhood
January - Catching criminals & managing offenders and Protecting our communities
February - Making the most of our resources and Equipping our team to deliver
March - The year end profile will have all six domain areas included

MSG Colour Key

Force	OCU
1-2	1-4
3-4	5-8
5-6	9-12
7-8	13-15

Index

Page

Year to date performance matrix

2	Summary		including notes on matrix terminology
3	Index		
4	Year to date targets matrix		

Providing an excellent service

5	User satisfaction	Target	Consultation & Research Team
5	Being kept informed		Consultation & Research Team
5	MSG user satisfaction data		Consultation & Research Team

An active presence in every neighbourhood

6	Reduction in criminal damage	Target	Business Objects
---	------------------------------	--------	------------------

Catching criminals and managing offenders and Protecting our communities

7	Serious acquisitive crime (SAC) detection rate and reduction in SAC	Target	Business Objects
8	Breakdown: Robbery, dwelling burglary, vehicle crime		Business Objects
8	Breakdown: Theft of a motor vehicle, theft from a motor vehicle		Business Objects
9	Violence against the person with injury	Target	Business Objects
10	Serious violent crime	Target	Business Objects
10	Homicide		Business Objects
11	Assault with less serious injury		Business Objects
12	Serious sexual offences		Business Objects
12	Rape		Business Objects

Catching criminals and managing offenders - monitoring areas

13	Detections by disposal type - volume and proportion		Business Objects
13	Restorative justice		Business Objects
13	Bail rates, first time entrants to CJ system, arrest and disposal information		CJD Performance
13	Outstanding suspects		Business Objects
14	OBTJ		CJD Performance
14	Forensic results for vehicle crime		Scientific Services

Protecting our communities - monitoring areas

15	Non-dwelling burglary		Business Objects
16	Domestic crimes, incidents and arrests		Business Objects
16	Hate crime		Business Objects
16	Drug seizures information		Business Objects
16	Gun crime		Business Objects
16	Knife crime		Business Objects
17-18	Casualty reduction		Operations
19	POCA number of cash seizures		Crime and Business Objects
19	Missing persons		Crime
19	Organised crime groups		Crime
20	All crime		Business Objects

Making the most of our resources

21	BME workforce population	Target	HR
21-22	Specials scorecard (the target aspect is effective use of specials)	Target	Extended policy family team
22	Cost reductions	Target	Finance
22	Protecting the frontline	Target	HR

Year to date performance targets matrix

	Target	Actual	Western	Eastern	Northern
Providing an excellent service					
Overall user satisfaction	70.0%	69.0%	69.0%	68.0%	70.0%
An active presence in every neighbourhood					
Reduce criminal damage	<1946	2065	666	801	598
	Area specific targets		683	749	515
Catching criminals & managing offenders & Protecting our communities					
Serious acquisitive crime SD	>15%	10.7%	8.3%	6.0%	21.2%
Reduction in serious acquisitive crime	<1373	1415	527	535	353
	Area specific targets		529	497	347
Reduce violence against the person with injury	<1140	1200	418	490	292
	Area specific targets		391	490	259
Most serious violence SD	>50%	48.53%	68.18%	43.33%	31.25%
Making the most of our resources					
BME workforce population	>2%	2.1%	This is a Force measure		
Effective use of volunteers/specials	<550	266	This is a Force measure		
Cost reductions	No data	No data	This is a Force measure		
Protect the frontline	<2224	2226	This is a Force measure		
Force Total - targets achieved	2		3	1	2

Notes to be read in conjunction with matrix

Overall user satisfaction data	Based on year to date rather than rolling months
SD	Sanction detections
BME	Black and minority ethnic
Area specific targets	Area specific targets are rounded to 0 decimal places; the actual figure may therefore seem the same but appear amber due to this rounding
Effective use of volunteers/specials	Based on the number of officers delivering 16 hours of duty time per month

Force target areas for providing an excellent service

	Target	Actual	Western	Eastern	Northern
Overall user satisfaction year to date	70.0%	69.0%	69.0%	68.0%	70.0%

User Satisfaction Survey results

April 2011 year to date

Includes victims of burglary, vehicle crime and violent crime who said they were completely or very satisfied

	Western	Eastern	Northern	Force	No. Surveys
Overall satisfaction	69%	68%	70%	69%	413
Being kept informed	56%	63%	55%	58%	408

Rolling 12 months data by OCU (May 10 - Apr 11)

Includes victims of burglary, vehicle crime and violent crime who said they were completely or very satisfied

Target 70%	Central	Isle of Wight	North & East	Portsmouth	Southampton	Western	Force	No. Surveys
Overall satisfaction	68%	70%	68%	68%	66%	72%	68%	7499
Being kept informed	57%	57%	57%	57%	55%	60%	57%	7351

MSG information for user satisfaction

iQuanta data for MSG for the 12 months ending December 2010 (iQuanta calculate satisfaction % based on those responding that they are completely, very or fairly satisfied)

	Previous MSG position	Current MSG position	Change		Previous MSG position	Current MSG position	Change
Vehicle crime				Burglary			
Ease of contact	1/8	2/8	↓	Ease of contact	3/8	3/8	↔
Actions taken	4/8	4/8	↔	Actions taken	5/8	3/8	↑
Follow up	4/8	5/8	↓	Follow up	1/8	1/8	↔
Treatment	4/8	4/8	↔	Treatment	6/8	6/8	↔
Whole Experience	4/8	5/8	↓	Whole Experience	4/8	3/8	↑

Violent crime

Ease of contact	4/8	4/8	↔
Actions taken	3/8	4/8	↓
Follow up	6/8	7/8	↓
Treatment	6/8	6/8	↔
Whole Experience	6/8	6/8	↔

RTC (minor injury)

Ease of contact	1/8	1/8	↔
Actions taken	2/8	2/8	↔
Follow up	1/8	1/8	↔
Treatment	2/8	1/8	↑
Whole Experience	3/8	3/8	↔

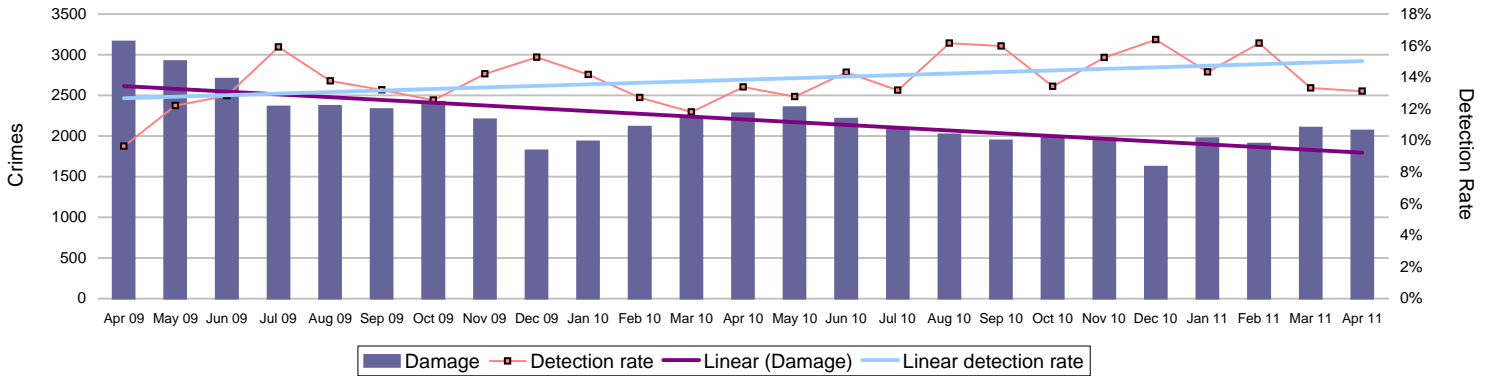
All users (excluding racist incidents)

Ease of contact	1/8	2/8	↓
Actions taken	2/8	3/8	↓
Follow up	1/8	3/8	↓
Treatment	4/8	5/8	↓
Whole Experience	3/8	4/8	↓

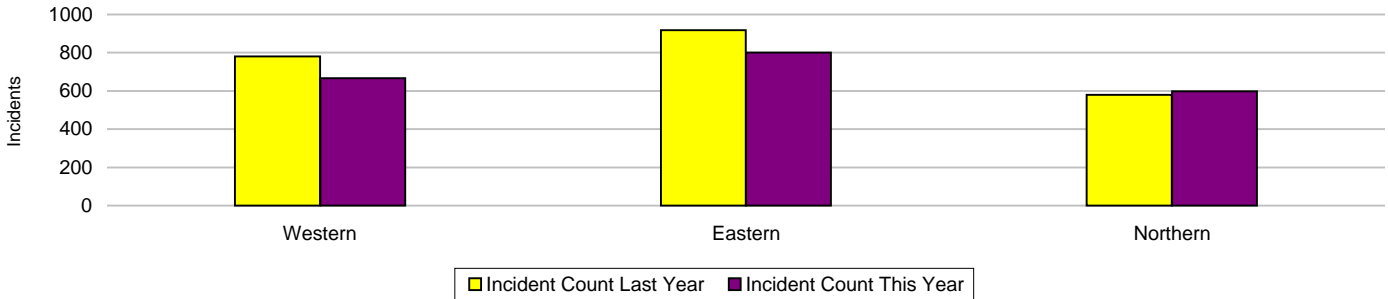
Force target areas for an active presence in every neighbourhood

	Target	Actual	Western	Eastern	Northern
Reduce criminal damage	1946	2065	666	801	598
	OCU specific targets		683	749	515

Criminal damage

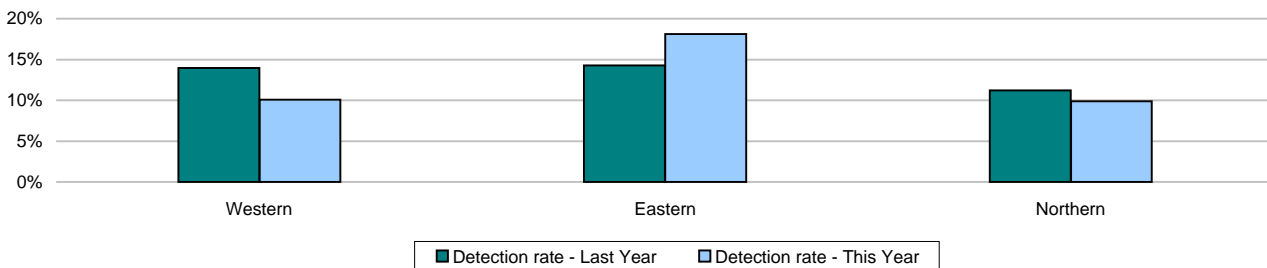


Crimes	Western	Eastern	Northern	Force
YTD Crimes	666	801	598	2065
YTD Target	683	749	515	1946
YTD 10/11 Crimes	781	918	579	2278
This month	666	801	598	2065
% change from 10/11	-14.72%	-12.75%	3.28%	-9.35%
MSG position	MSG for areas cannot currently be displayed			8 of 8
MSG actual				3.197
MSG average				2.863



Detections	Western	Eastern	Northern	Force
YTD Detection Rate	10.06%	18.10%	9.87%	13.12%
This month	10.06%	18.10%	9.87%	13.12%
YTD 10/11 Detections	13.96%	14.27%	11.23%	13.39%
MSG position	MSG for areas cannot currently be displayed			5 of 8
MSG actual				14.41%
MSG average				14.25%

Note: Detections refer to Sanction Detections ONLY



Note: MSG data is always published a month in arrears.
For an explanation of this data, refer to the Summary on page 2

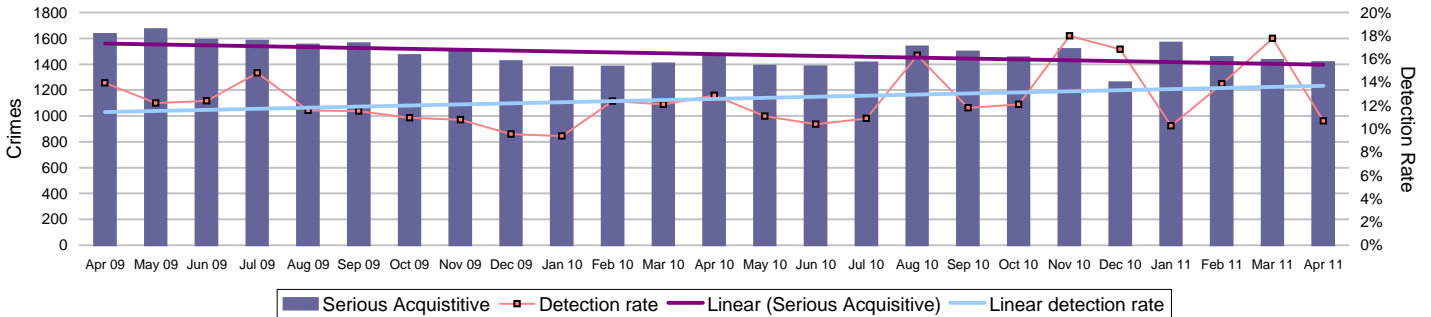
Force target areas for catching criminals and managing offenders

Force target areas for protecting our communities

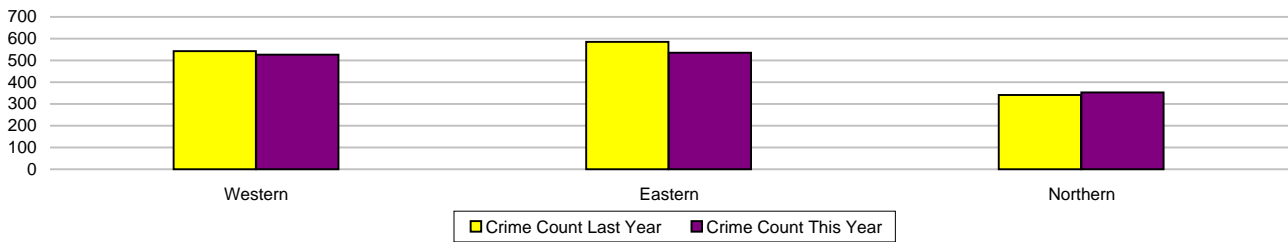
	Target	Actual	Western	Eastern	Northern
Serious acquisitive detection rate	15%	10.7%	8.3%	6.0%	21.2%
Reduce serious acquisitive crime	1373	1415	527	535	353

Serious acquisitive crime

Serious acquisitive crime consists of crimsec codes 28, 29, 34A, 34B, 37/2, 45 and 48



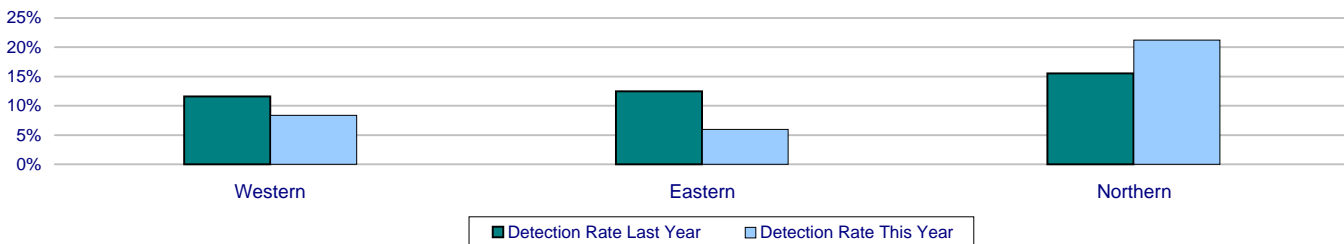
Crimes	Western	Eastern	Northern	Force
YTD Crimes	527	535	353	1415
Target	529	497	347	1373
YTD 10/11 Crimes	542	586	341	1469
This month	527	535	353	1415
% change from 10/11	-2.77%	-8.70%	3.52%	-3.68%
MSG actual	MSG for areas cannot currently be displayed			3 of 8
MSG average				2.35
MSG average				2.80



Detections

Target >15%	Western	Eastern	Northern	Force
YTD Detection Rate	8.35%	5.98%	21.25%	10.67%
This month	8.35%	5.98%	21.25%	10.67%
YTD 10/11 Detections	11.62%	12.46%	15.54%	12.87%
MSG position	MSG for areas cannot currently be displayed			4 of 8
MSG actual				13.45%
MSG average				14.77%

Note: Detections refer to Sanction Detections ONLY



Force target areas for catching criminals and managing offenders

Force target areas for protecting our communities

Serious acquisitive crime breakdown

Robbery

Year to date	Western	Eastern	Northern	Force
Crimes	41	28	21	90
Last year's crimes	26	31	18	75
% change from last year	57.69%	-9.68%	16.67%	20.00%
MSG position				2 of 8

Detection rate	24.39%	3.57%	9.52%	14.44%
MSG position				6 of 8

April 2011	Western	Eastern	Northern	Force
Crimes	41	28	21	90
Detection rate	24.39%	3.57%	9.52%	14.44%

Dwelling burglary

Year to date	Western	Eastern	Northern	Force
Crimes	155	191	108	454
Last year's crimes	158	182	95	435
% change from last year	-1.90%	4.95%	13.68%	4.37%
MSG position				3 of 8

Detection rate	14.19%	5.24%	7.41%	8.81%
MSG position				5 of 8

April 2011	Western	Eastern	Northern	Force
Crimes	155	191	108	454
Detection rate	14.19%	5.24%	7.41%	8.81%

Vehicle crime

Year to date	Western	Eastern	Northern	Force
Crimes	331	316	224	871
Last year's crimes	358	373	228	959
% change from last year	-7.54%	-15.28%	-1.75%	-9.18%
MSG position				3 of 8

Detection rate	3.63%	6.65%	29.02%	11.25%
MSG position				5 of 8

April 2011	Western	Eastern	Northern	Force
Crimes	331	316	224	871
Detection rate	3.63%	6.65%	29.02%	11.25%
Detection numbers	12	21	65	98

Theft of a motor vehicle

Year to date	Western	Eastern	Northern	Force
Crimes	87	86	54	227
MSG position				2 of 8
Detection rate	3.45%	13.95%	16.67%	10.57%
MSG position				3 of 8

April 2011	Western	Eastern	Northern	Force
Crimes	87	86	54	227
Detection rate	3.45%	13.95%	16.67%	10.57%
Detection numbers	3	12	9	24

Theft from a motor vehicle

Year to date	Western	Eastern	Northern	Force
Crimes	244	230	170	644
MSG position				4 of 8
Detection rate	3.69%	3.91%	32.94%	11.49%
MSG position				5 of 8

April 2011	Western	Eastern	Northern	Force
Crimes	244	230	170	644
Detection rate	3.69%	3.91%	32.94%	11.49%
Detection numbers	9	9	56	74

Robbery, dwelling burglary and vehicle crime are the component parts of serious acquisitive crime. These individual crime types do not have targets.

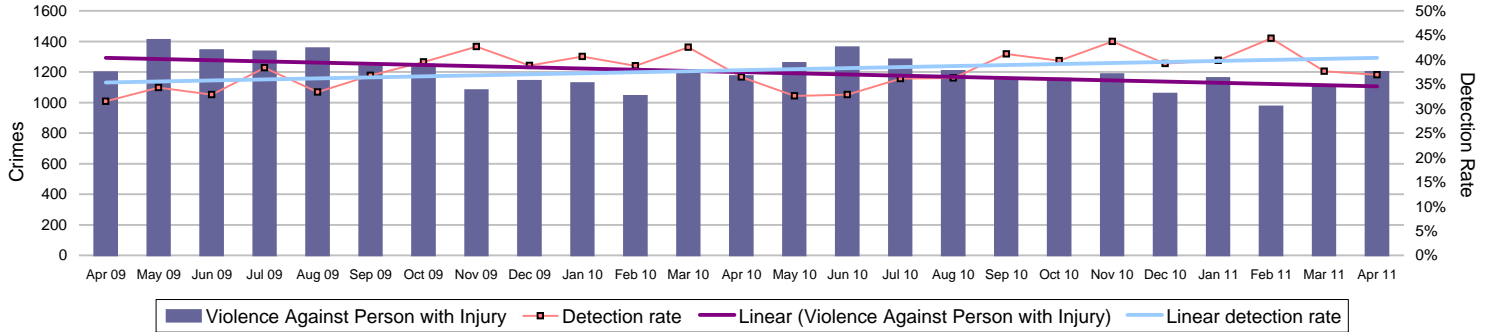
Force target areas for catching criminals and managing offenders

Force target areas for protecting our communities

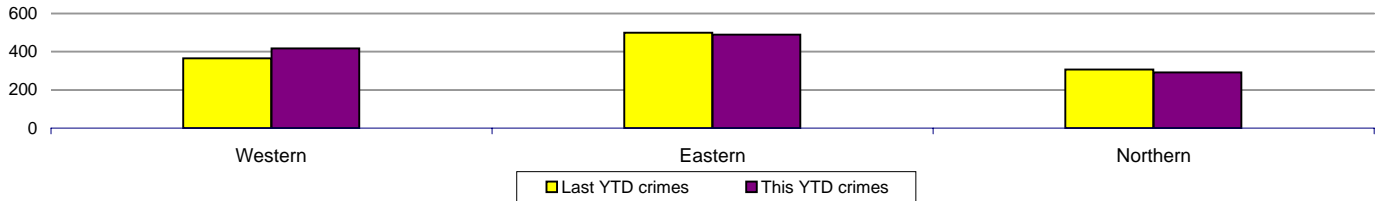
	Target	Actual	Western	Eastern	Northern
Reduction of VAP with injury	1140	1200	418	490	292
OCU specific targets			391	490	259

Violence against the person (VAP) with injury

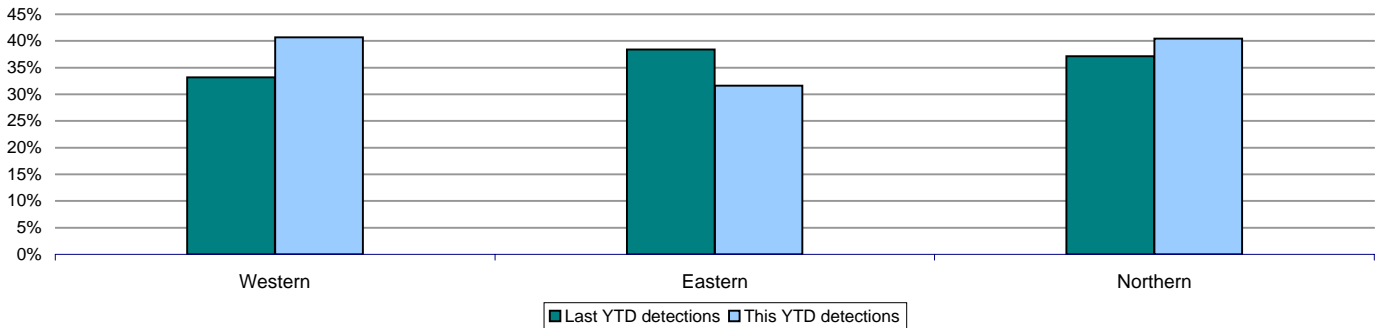
VAP with injury crimsec codes 1, 2, 4.1-4.4, 4.6-4.10, 5A, 5B, 5C, 8F, 8G, 8H, 8J, 8K and 37.1



Crimes	Western	Eastern	Northern	Force
YTD Crimes	418	490	292	1200
YTD Target	391	490	259	1140
YTD 10/11 Crimes	365	500	307	1172
This month	418	490	292	1200
% change from 10/11	14.52%	-2.00%	-4.89%	2.39%
MSG position	MSG for areas cannot currently be displayed			7 of 8
MSG actual				1.75
MSG average				1.33



Detections	Western	Eastern	Northern	Force
YTD Detection Rate	40.67%	31.63%	40.41%	36.92%
This month	40.67%	31.63%	40.41%	36.92%
YTD 10/11 Detections	33.15%	38.40%	37.13%	36.43%
MSG position	MSG for areas cannot currently be displayed			7 of 8
MSG actual				37.88%
MSG average				42.12%



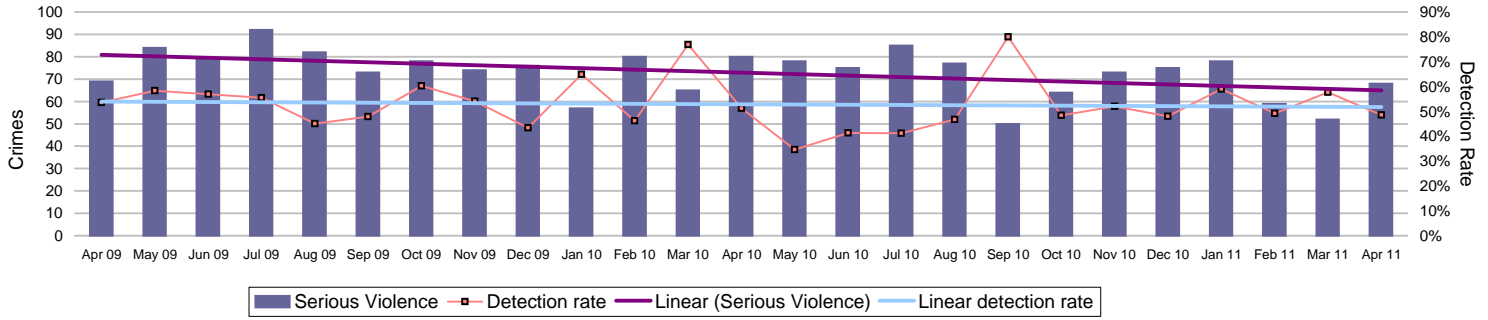
Note: MSG data is always published a month in arrears.
For an explanation of this data, refer to the Summary on page 2
Page 9 of 22

Force target areas for catching criminals and managing offenders

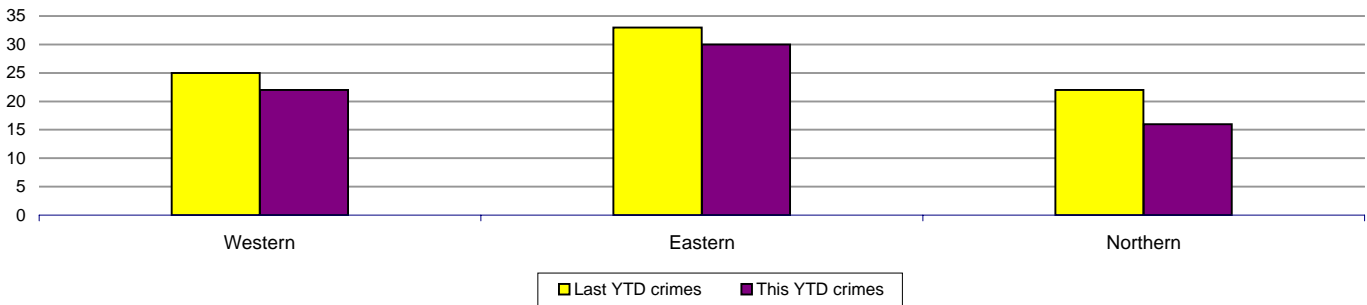
Force target areas for protecting our communities

Serious violent crime

Serious violent crime consists of crimsec codes 1, 2, 4.1-4.4, 4.6, 4.8, 5A, 5B, 5C, 8F, 8H and 37.1

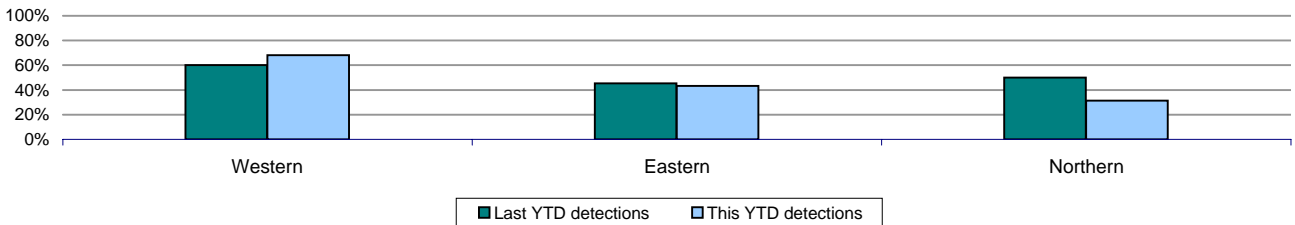


Crimes	Western	Eastern	Northern	Force
YTD Crimes	22	30	16	68
YTD 10/11 Crimes	25	33	22	80
This month	22	30	16	68
% change from 10/11	-12.00%	-9.09%	-27.27%	-15.00%
MSG position	MSG for areas cannot currently be displayed			6 of 8
MSG actual				0.098
MSG average				0.090



Detections	Western	Eastern	Northern	Force
YTD Detection Rate	68.18%	43.33%	31.25%	48.53%
This month	68.18%	43.33%	31.25%	48.53%
YTD 10/11 Detections	60.00%	45.45%	50.00%	51.25%
MSG position	MSG for areas cannot currently be displayed			6 of 8
MSG actual				49.17%
MSG average				51.28%

Note: Detections refer to Sanction Detections ONLY



Homicide

	Western	Eastern	Northern	Force
YTD April 2011 - total	2	0	0	2
YTD Domestic Homicides 2011/2012	1	0	0	1
YTD April 2010 - total	1	0	0	1
YTD Domestic Homicides 2010/2011	0	0	0	0

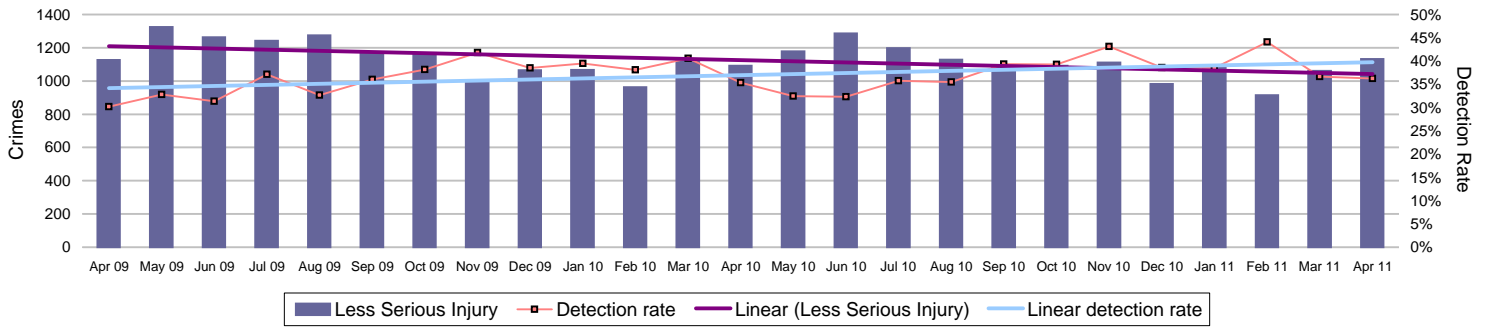
Note: A domestic homicide is where the relationship between victim and suspect was either: spouse, common-law spouse or cohabiting partner, boyfriend/girlfriend, ex-boyfriend/girlfriend or adulterous relationship

Force target areas for catching criminals and managing offenders

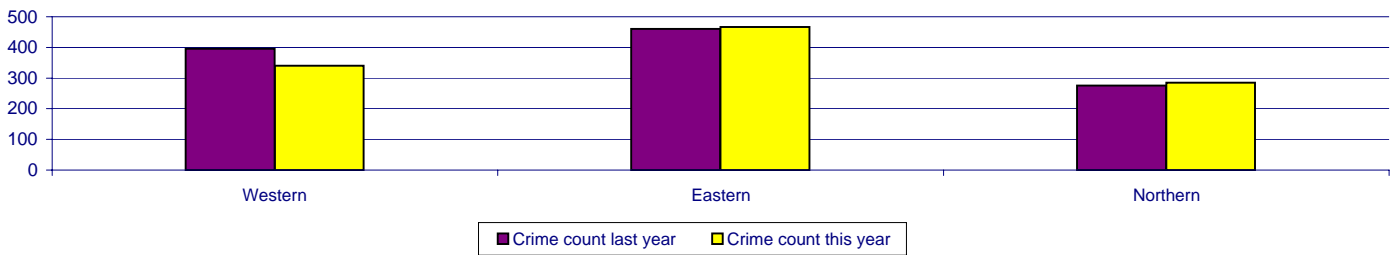
Force target areas for protecting our communities

Assault with less serious injury

Assault with less serious injury consists of crimsec codes 8G and 8J

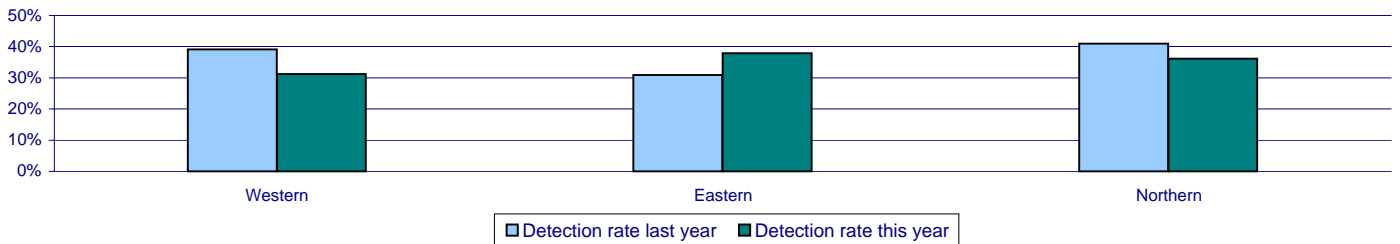


Crimes	Western	Eastern	Northern	Force
YTD Crimes	396	460	276	1132
YTD 10/11 Crimes	340	467	285	1092
This month	396	460	276	1132
% change from 10/11	16.47%	-1.50%	-3.16%	3.66%
MSG position	MSG for areas cannot currently be displayed			8 of 8
MSG actual				1.652
MSG average				1.237



Detections	Western	Eastern	Northern	Force
YTD Detection Rate	39.14%	30.87%	40.94%	36.22%
This month	39.14%	30.87%	40.94%	36.22%
YTD 10/11 Detections	31.18%	37.90%	36.14%	35.35%
MSG position	MSG for areas cannot currently be displayed			7 of 8
MSG actual				37.16%
MSG average				41.46%

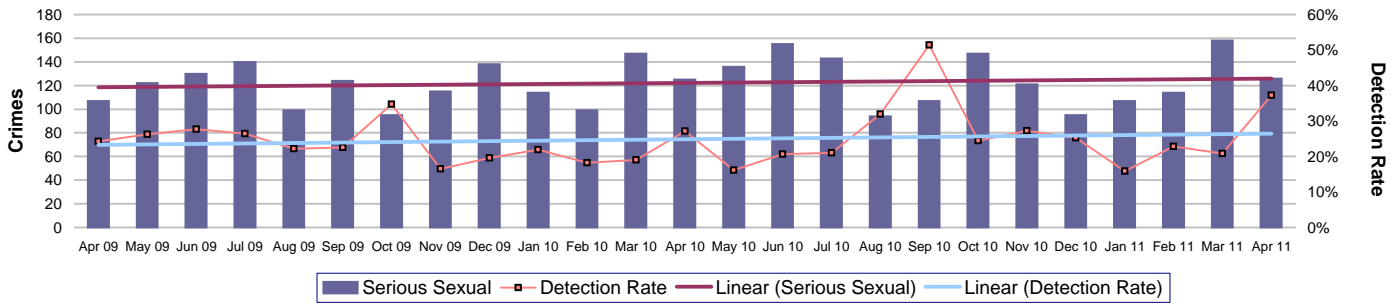
Note: Detections refer to Sanction Detections ONLY



Force target areas for catching criminals and managing offenders

Force target areas for protecting our communities

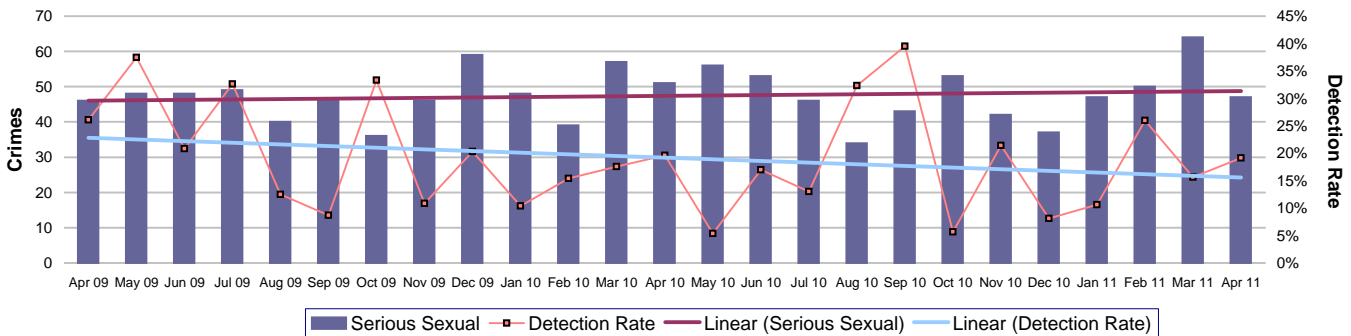
Serious sexual offences



	Western	Eastern	Northern	Force
YTD Crimes	40	60	26	126
YTD 10/11 Crimes	46	53	26	125
This month	40	60	26	126
% change from 10/11	-13.04%	13.21%	0.00%	0.80%

	Western	Eastern	Northern	Force
YTD Detection Rate	32.50%	45.00%	26.92%	37.30%
This month	32.50%	45.00%	26.92%	37.30%
YTD 10/11 Detections	30.43%	22.64%	30.77%	27.20%

Rape



	Western	Eastern	Northern	Force
YTD Crimes	15	25	7	47
YTD 10/11 Crimes	20	16	15	51
This month	15	25	7	47
% change from 10/11	-25.00%	56.25%	-53.33%	-7.84%

	Western	Eastern	Northern	Force
YTD Detection Rate	6.67%	24.00%	28.57%	19.15%
This month	6.67%	24.00%	28.57%	19.15%
YTD 10/11 Detections	15.00%	43.75%	0.00%	19.61%

Note: MSG data is always published a month in arrears.
For an explanation of this data, refer to the Summary on page 2

Monitoring information for catching criminals and managing offenders

Detections by disposal type - Volume

April 2011	Central	Isle of Wight	North & East	Portsmouth	Southampton	Western	Force
Charge	264	94	251	240	292	235	1376
Caution	71	22	59	52	61	67	332
Conditional Caution	7	0	4	4	0	3	18
Reprimand/warning	46	7	31	6	10	24	124
TIC	25	1	1	0	4	1	32
PND	39	4	44	36	34	32	189
Cannabis warning	37	10	50	17	25	25	164
	489	138	440	355	426	387	2235

Community resolution	23	1	8	19	7	6	64
----------------------	-----------	----------	----------	-----------	----------	----------	-----------

Detections by disposal type - Proportion

April 2011	Central	Isle of Wight	North & East	Portsmouth	Southampton	Western	Force
Charge	53.99%	68.12%	57.05%	67.61%	68.54%	60.72%	61.57%
Caution	14.52%	15.94%	13.41%	14.65%	14.32%	17.31%	14.85%
Conditional Caution	1.43%	0.00%	0.91%	1.13%	0.00%	0.78%	0.81%
Reprimand/warning	9.41%	5.07%	7.05%	1.69%	2.35%	6.20%	5.55%
TIC	5.11%	0.72%	0.23%	0.00%	0.94%	0.26%	1.43%
PND	7.98%	2.90%	10.00%	10.14%	7.98%	8.27%	8.46%
Cannabis warning	7.57%	7.25%	11.36%	4.79%	5.87%	6.46%	7.34%

Percentage bailed on first submission

Percentage of entrants into custody bailed as first disposal

Month - March 2011	Central	Isle of Wight	North & East	Portsmouth	Southampton	Western	Force
People Arrested	909	376	727	769	1044	476	4301
No of arrests	1411	490	1044	1119	1564	720	6348
All Disposals	2170	780	1675	1775	2315	1105	9820
Bailed on first submission	37%	38%	33%	30%	29%	37%	No data

Arrest and disposal information

Month - March 2011	Central	Isle of Wight	North & East	Portsmouth	Southampton	Western	Force
Bailed	548	207	337	425	508	296	2321
Charged	485	188	422	399	576	244	2314
Cautioned	101	36	67	82	111	49	446
PND	18	14	17	14	21	17	101
Warning	14	6	22	9	13	17	81
No further action	409	117	301	314	379	177	1697

Outstanding suspects - suspects that are shown on RMS for offences up to and including 30/04/2011

	Central	Isle of Wight	North & East	Portsmouth	Southampton	Western	Force
Crime count	104	41	103	91	107	96	542
Total suspects	126	45	111	101	129	108	620

Monitoring information for catching criminals and managing offenders

Offenders brought to justice

Serious Violent offences OBTJ

Data to January 2011

	Recorded Crime		Total OBTJs		Hampshire		Rolling Average	
	Month	RA	Month	RA	Month	RA	MSG	E&W
Attempted murder	1	10	0	4	0.0%	40.0%	46.0%	23.4%
Death by aggravated vehicle taking	0	0	0	0	0.0%	0.0%	100.0%	57.1%
Cause death by dangerous driving etc	0	8	0	11	0.0%	137.5%	91.1%	111.2%
Homicide and child destruction	0	11	1	14	0.0%	127.3%	100.8%	92.6%
Wounding and GBH without intent	87	844	17	226	19.5%	26.8%	28.1%	23.7%

	Convictions	Caution	TICs	Cannabis Warning	PNDs
Rolling 12 month Average					
Attempted murder	4	0	0	0	0
Death by aggravated vehicle taking	0	0	0	0	0
Cause death by dangerous driving etc	11	0	0	0	0
Homicide and child destruction	14	0	0	0	0
Wounding and GBH without intent	217	9	0	0	0

Serious Acquisitive offences OBTJ

Data to January 2011

	Recorded Crime		Total OBTJs		Hampshire		Rolling Average	
	Month	RA	Month	RA	Month	RA	MSG	E&W
Aggravated burglary in a dwelling	2	32	5	22	250.0%	68.8%	35.4%	30.2%
Aggravated vehicle taking	11	161	14	172	127.3%	106.8%	74.8%	72.7%
Burglary in a dwelling	437	5094	53	695	12.1%	13.6%	14.8%	14.9%
Robbery	97	1129	19	212	19.6%	18.8%	23.0%	16.9%
Theft from a vehicle	595	8633	94	614	15.8%	7.1%	7.6%	8.4%
Theft of a motor vehicle	132	2122	39	316	29.6%	14.9%	13.2%	12.0%

	Convictions	Caution	TICs	Cannabis Warnings	PNDs
Rolling 12 month Average					
Aggravated burglary in a dwelling	22	0	0	0	0
Aggravated vehicle taking	145	27	0	0	0
Burglary in a dwelling	447	34	214	0	0
Robbery	209	3	0	0	0
Theft from a vehicle	214	39	361	0	0
Theft of a motor vehicle	224	28	64	0	0

Serious sexual crime OBTJ rate

The table below shows % of persons brought to justice for serious sexual crimes against the total number of serious sexual crimes

OBTJ Crime category	Jul-10	Aug-10	Sep-10	Oct-10	Nov-10	Dec-10	Rolling average
Tier 1: Serious Sexual Offences	26%	16%	39%	19%	19%	32%	26%

RA = Rolling Annual

PND = Penalty Notice for Disorder

E&W = England & Wales

Forensic results for Vehicle Crime

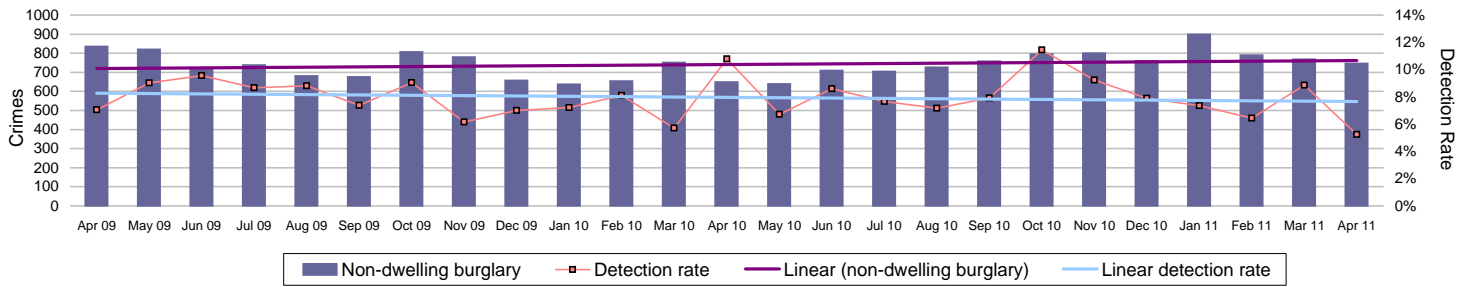
DNA - Theft of a motor vehicle and

DNA - Theft from a motor vehicle

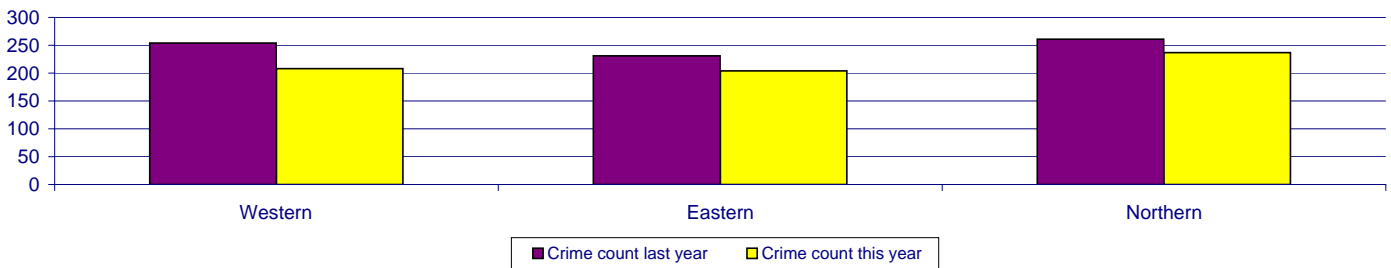
Data for this measure has not been supplied for this profile

Monitoring information for protecting our communities

Non-Dwelling Burglary

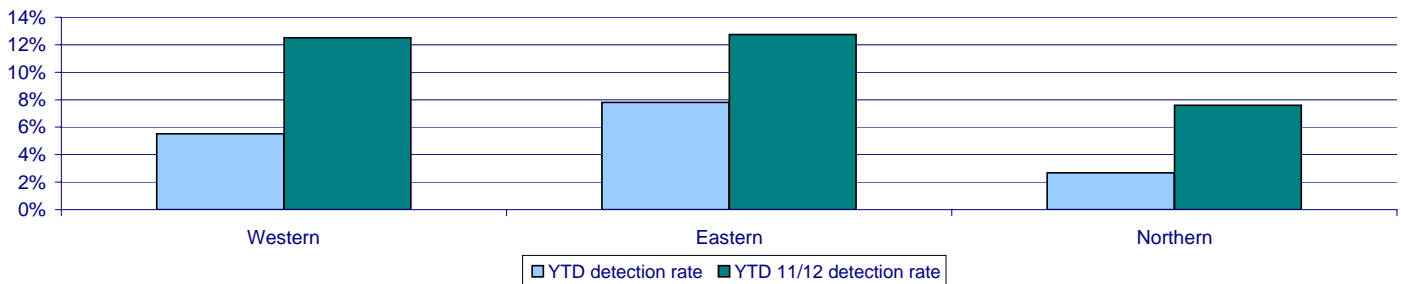


Crimes	Western	Eastern	Northern	Force
YTD Crimes	254	231	261	746
YTD 10/11 Crimes	208	204	237	649
This month	254	231	261	746
% change from 10/11	22.12%	13.24%	10.13%	14.95%
MSG position	MSG for areas cannot currently be displayed			6 of 8
MSG actual				1.319
MSG average				1.222



Detections	Western	Eastern	Northern	Force
YTD Detection Rate	5.51%	7.79%	2.68%	5.23%
This month	5.51%	7.79%	2.68%	5.23%
YTD 10/11 Detections	12.50%	12.75%	7.59%	10.79%
MSG position	MSG for areas cannot currently be displayed			4 of 8
MSG actual				8.22%
MSG average				8.31%

Note: Detections refer to Sanction Detections ONLY



Monitoring information for protecting our communities

Domestic Crimes and Incidents

YTD April 2011	Western	Eastern	Northern	Force
Domestic Crimes	224	251	195	670
Domestic Detection Rate	29.46%	31.87%	31.79%	31.04%
Domestic Crimes Arrests	177	192	140	509
Domestic Crime Arrest Rate	79.02%	76.49%	71.79%	75.97%

YTD April 2011	Western	Eastern	Northern	Force
Domestic Crimes	224	251	195	670
Repeat Domestic	56	72	28	156
% Repeat	25.00%	28.69%	14.36%	23.28%

Domestic Incidents	661	763	531	1955
Repeat Domestic	292	382	179	853
% Repeat	44.18%	50.07%	33.71%	43.63%

Hate Crimes and Incidents

YTD April 2011	Western	Eastern	Northern	Force
Incidents	57	65	27	149
Crimes	40	42	19	101
Detections	8	17	17	42
Detection rate	20.00%	40.48%	89.47%	41.58%

Drug seizures information

	Central	Isle of Wight	North & East	Portsmouth	Southampton	Western	Force
YTD Dec 2011	679	1090	570	595	785	471	4190
YTD Dec 2010	953	1221	795	571	882	488	4910
% change from 10/11	-28.8%	-10.7%	-28.3%	4.2%	-11.0%	-3.5%	-14.7%

This data is collated quarterly. Data for quarter 4 was not available for the publication of this profile

Gun crime rate

	Central	Isle of Wight	North & East	Portsmouth	Southampton	Western	Force	MSG position to Feb 2011
YTD April 2011	4	1	2	2	6	3	18	4 of 8
YTD April 2010	3	0	3	1	1	2	10	
% change from 10/11	33.3%	100.0%	-33.3%	100.0%	500.0%	50.0%	80.0%	

Gun crime figures published reflect the APACS technical definition which includes "where the victim is convinced of the presence of a firearm, even if it is concealed and there is evidence of the suspect's intention to create this impression".

Knife crime rate

	Central	Isle of Wight	North & East	Portsmouth	Southampton	Western	Force	MSG position to Dec 2010
YTD April 2011	7	0	6	8	17	2	40	3 of 8
YTD April 2010	13	3	10	9	7	5	47	
% change from 10/11	-46.2%	-100.0%	-40.0%	-11.1%	142.9%	-60.0%	-14.9%	

Knife = knife or other sharp instrument (including broken glass/bottles) piercing the skin or, for threats and attempts, instruments normally capable of piercing the skin. The measure for counting broken glass/bottles changed for 09-10 with less occurrences being counted by the Home Office. Knife crime figures published reflect the APACS technical definition which includes "where the victim is convinced of the presence of a knife, even if it is concealed and there is evidence of the suspects intention to create this impression".

Monitoring information for protecting our communities

Note: Year to date (YTD) in relation to casualty data is January to December

Casualty reduction

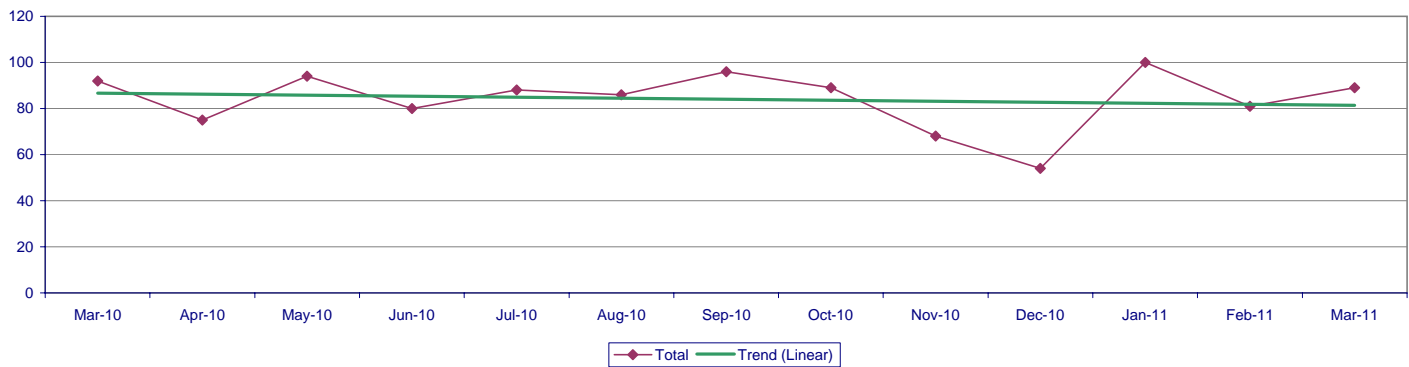
	YTD 2011	YTD 2010	% change from 2010	Mar 2011	Mar 2010	% change from 2010
Basingstoke & Deane BC	19	17	11.8%	8	8	0.0%
Eastleigh BC	18	13	38.5%	7	7	0.0%
Fareham BC	13	12	8.3%	4	4	0.0%
Gosport BC	5	8	-37.5%	3	4	-25.0%
Hart DC	21	6	250.0%	3	3	0.0%
Havant BC	9	5	80.0%	4	3	33.3%
New Forest DC	28	20	40.0%	13	10	30.0%
East Hants DC	20	13	53.8%	7	7	0.0%
Portsmouth Unitary Authority	30	23	30.4%	7	9	-22.2%
Rushmoor BC	9	6	50.0%	6	2	200.0%
Southampton Unitary Authority	43	23	87.0%	13	10	30.0%
Test Valley BC	19	13	46.2%	5	6	-16.7%
Winchester CC	14	24	-41.7%	2	17	-88.2%
Isle of Wight Unitary Authority	22	15	46.7%	7	2	250.0%
Force	270	198	36.4%	89	92	-3.3%

BC = Borough Council

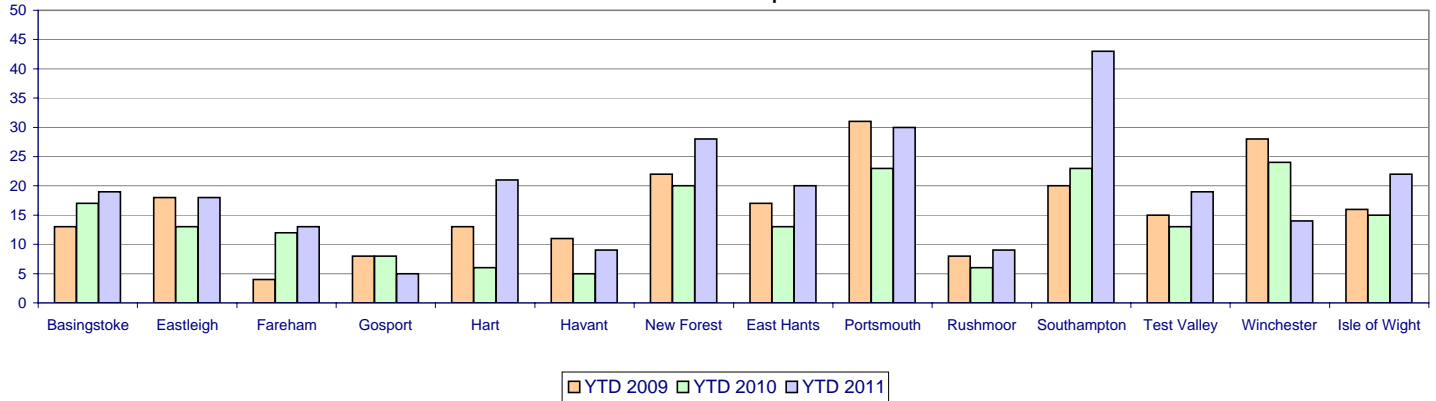
CC = County Council

DC = District Council

All KSI Casualties



All KSIs - YTD Comparison

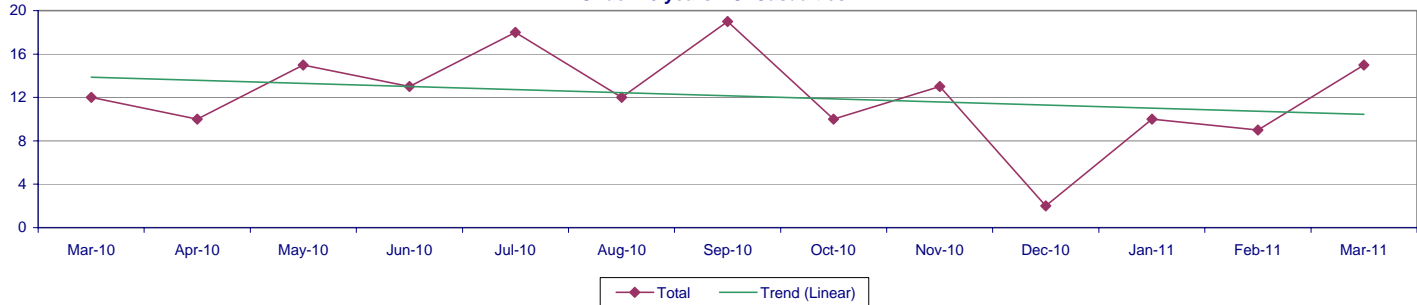


Monitoring information for protecting our communities

Under 18 KSI casualties

	YTD 2011	YTD 2010	% change from 2010	Mar 2011	Mar 2010	% change from 2010
Basingstoke & Deane BC	3	1	200.0%	2	1	100.0%
Eastleigh BC	2	0	-	0	0	-
Fareham BC	2	2	0.0%	2	1	100.0%
Gosport BC	2	1	100.0%	2	1	100.0%
Hart DC	1	0	-	0	0	-
Havant BC	1	3	-66.7%	0	2	-100.0%
New Forest DC	3	1	200.0%	3	0	-
East Hants DC	1	0	-	1	0	-
Portsmouth Unitary Authority	5	5	0.0%	1	1	0.0%
Rushmoor BC	1	2	-50.0%	1	0	-
Southampton Unitary Authority	10	3	233.3%	1	0	-
Test Valley BC	0	1	-100.0%	0	0	-
Winchester CC	1	7	-85.7%	1	5	-80.0%
Isle of Wight Unitary Authority	2	4	-50.0%	1	1	0.0%
Force	34	30	13.3%	15	12	25.0%

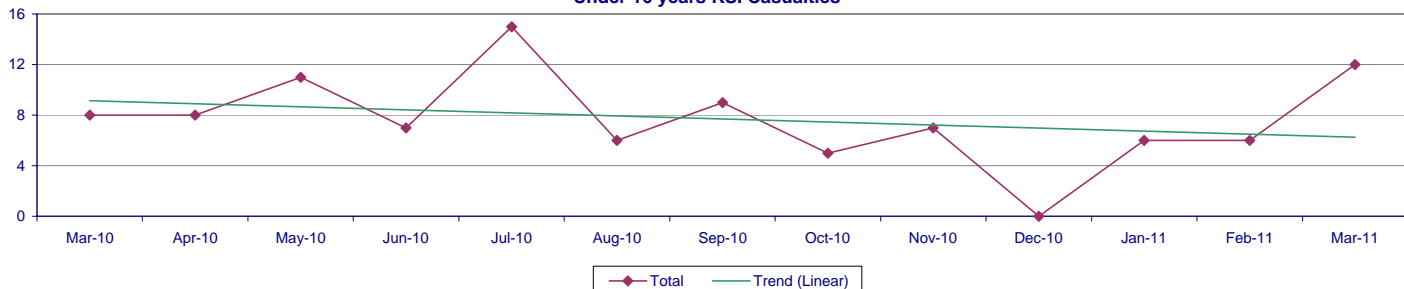
Under 18 years KSI Casualties



Under 16 KSI casualties

	YTD 2011	YTD 2010	% change from 2010	Mar 2011	Mar 2010	% change from 2010
Basingstoke & Deane BC	3	0	-	2	0	-
Eastleigh BC	2	0	-	0	0	-
Fareham BC	1	2	-50.0%	1	1	0.0%
Gosport BC	2	1	100.0%	2	1	100.0%
Hart DC	1	0	-	0	0	-
Havant BC	0	2	-100.0%	0	1	-100.0%
New Forest DC	1	0	-	1	0	-
East Hants DC	1	0	-	1	0	-
Portsmouth Unitary Authority	4	3	33.3%	1	0	-
Rushmoor BC	1	1	0.0%	1	0	-
Southampton Unitary Authority	5	1	400.0%	1	0	-
Test Valley BC	0	1	-100.0%	0	0	-
Winchester CC	1	6	-83.3%	1	5	-80.0%
Isle of Wight Unitary Authority	2	2	0.0%	1	0	-
Force	24	19	26.3%	12	8	50.0%

Under 16 years KSI Casualties



Monitoring information for protecting our communities

POCA - Actual Cash Seizure Value (Forfeited) by month

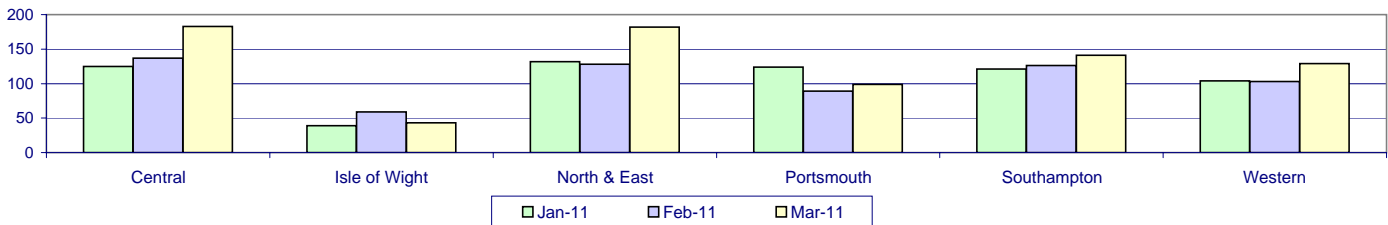
Data not supplied for February 2011, March 2011 or April 2011

	Central	Isle of Wight	North & East	Portsmouth	Southampton	Western	Crime OCU	Operations	Force
April 2010	£0.00	£0.00	£1,745.00	£152,477.62	£6,000.00	£0.00	£0.00	£0.00	£160,222.62
May 2010	£0.00	£2,385.00	£7,440.00	£1,970.00	£0.00	£0.00	£0.00	£0.00	£11,795.00
June 2010	£0.00	£0.00	£4,804.86	£682.44	£4,205.00	£0.00	£0.00	£0.00	£9,692.30
July 2010	£3,298.52	£0.00	£4,660.00	£0.00	£0.00	£4,241.30	£24,910.00	£0.00	£37,109.82
August 2010	£5,096.16	£0.00	£0.00	£1,700.00	£1,300.00	£0.00	£0.00	£0.00	£8,096.16
September 2010	£2,000.00	£1,035.00	£5,632.39	£0.00	£17,900.00	£1,000.00	£0.00	£0.00	£27,567.39
October 2010	£0.00	£3,920.00	£0.00	£3,801.67	£0.00	£0.00	£2,500.00	£2,500.00	£12,721.67
November 2010	£0.00	£0.00	£8,336.59	£1,817.77	£4,830.00	£0.00	£0.00	£0.00	£14,984.36
December 2010	£0.00	£148,468.20	£0.00	£0.00	£0.00	£0.00	£0.00	£0.00	£148,468.20
January 2011	£3,055.05	£0.00	£0.00	£0.00	£2,705.00	£4,917.65	£0.00	£0.00	£10,677.70

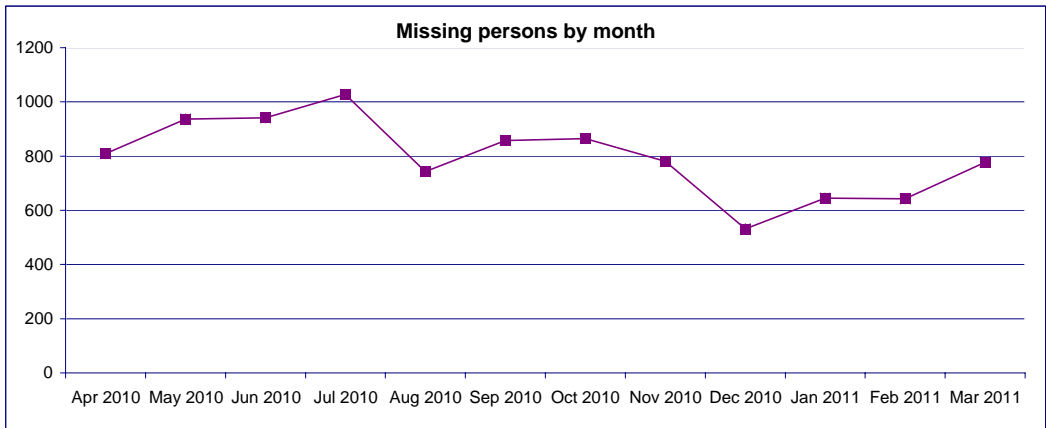
Missing Persons

Breakdown by OCU

	Central	Isle of Wight	North & East	Portsmouth	Southampton	Western	Force
January 2011	125	39	132	124	121	104	645
February 2011	137	59	128	89	126	103	642
March 2011	183	43	182	99	141	129	777



Force total	Force
Apr 2010	809
May 2010	937
Jun 2010	941
Jul 2010	1028
Aug 2010	743
Sep 2010	857
Oct 2010	864
Nov 2010	781
Dec 2010	532
Jan 2011	645
Feb 2011	642
Mar 2011	777



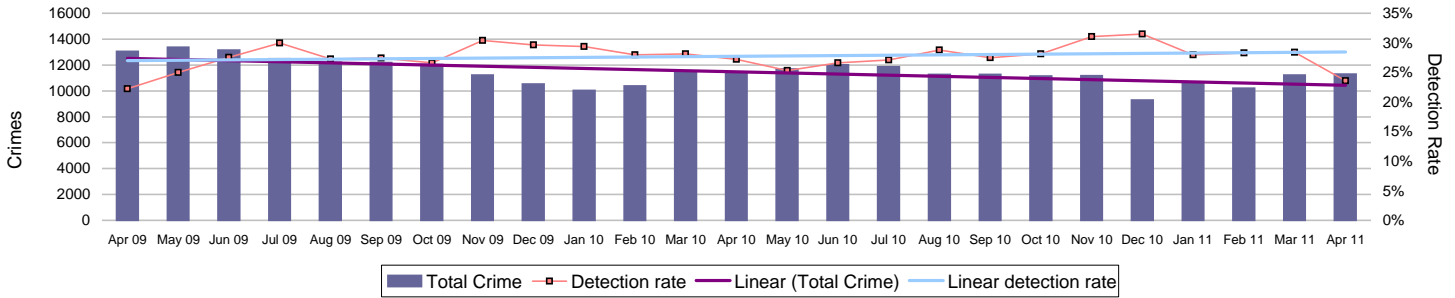
Number of Organised Crime Groups (OCGs) disrupted

YTD April 2011

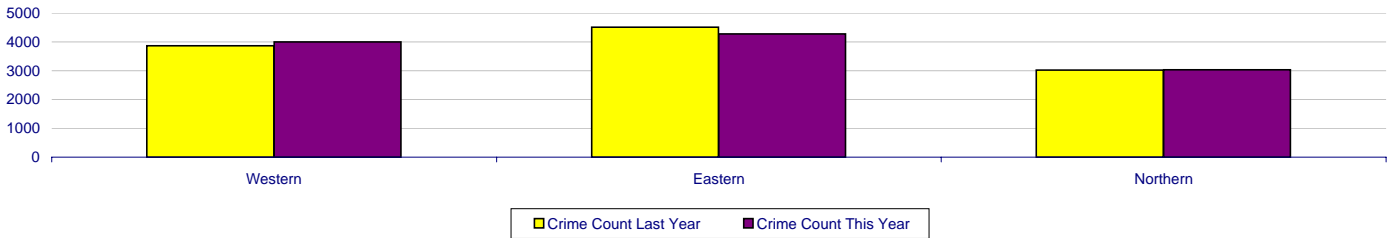
	2010/2011	2011/2012	Disrupted against identified
Number of OCGs identified and mapped	1	0	N/A
Number of OCGs disrupted or partially disrupted through Crime OCU activity	1	1	
Number of OCGs subject to tactical activity	12	3	

Monitoring information for protecting our communities

All crime

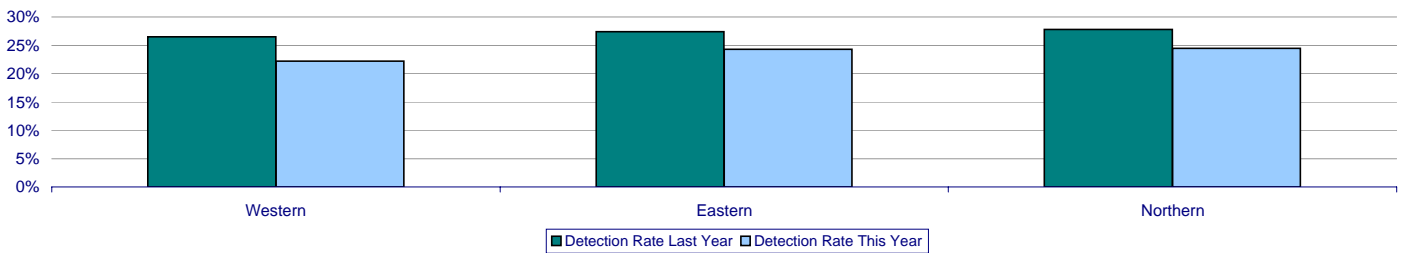


Crimes	Western	Eastern	Northern	Force
YTD Crimes	4002	4273	3032	11307
YTD 10/11 Crimes	3870	4510	3027	11407
This month	4002	4273	3032	11307
% change from 10/11	3.41%	-5.25%	0.17%	-0.88%
MSG position	MSG for areas cannot currently be displayed			5 of 8
MSG actual				17.11
MSG average				16.29



Detections	Western	Eastern	Northern	Force
YTD Detection Rate	22.19%	24.29%	24.44%	23.59%
This month	22.19%	24.29%	24.44%	23.59%
YTD 10/11 Detections	26.49%	27.43%	27.78%	27.20%
MSG position	MSG for areas cannot currently be displayed			6 of 8
MSG actual				27.90%
MSG average				28.73%

Note: Detections refer to Sanction Detections ONLY



Force target areas making the most of our resources

	Target	Actual
BME Workforce population	2%	2.12%
Effective use of specials	550	266
Cost reductions	Maintain top quartile position	No data
Protecting the frontline	2224	2226

BME workforce population

The 2011/2012 target is to retain 2% of all officers and staff as BME

	Target	Actual
BME retention	2% of all staff	2.12%

Total

	All staff	Minority ethnic staff	Percentage
As At 30/04/2011	6045.1	127.9	2.1%

Police officer

	Police officers	Minority ethnic police officers	Percentage
As At 30/04/2011	3606.5	83.8	2.3%

Police staff (incl PCSOs)

	Police staff	Minority ethnic police staff	Percentage
As At 30/04/2011	2438.6	44.1	1.8%

Effective use of specials/volunteers

	Target	Force
April 2011	550	266

This target shows the number of special constables who are delivering 16 hours or more of duty per month

Special Constable Balanced Scorecard

	Western	Eastern	Northern	RPU	CS/CQ	Force
Total number of officers	141	172	141	6	7	467
Total number of operational hours	1552	2543	2532	0	77	6703.5
Number of operational hours per 1000 population	2.9	4.0	4.2	N/A	N/A	3.8
Average number of operational hours per officer	16.3	19.7	23.4	0.0	10.9	19.8
Leavers joining regular service or transferring to another Force	0	0	0	0	0	0
Leavers not joining regular service or transferring to another Force	2	3	0	0	0	5
% of Officers completing 16 or more hours duty per month	53%	60%	61%	0%	43%	57%

Force target areas making the most of our resources

Special Constable Balanced Scorecard (continued)

Gender	Western	Eastern	Northern	RPU	CS/CQ	Force
Male	99	119	103	6	6	333
Female	42	53	38	0	1	134

Ethnicity	Western	Eastern	Northern	RPU	CS/CQ	Force
White	137	169	138	6	7	457
Mixed	0	2	0	0	0	2
Black or black British	2	0	2	0	0	4
Asian or asian British	1	1	1	0	0	3
Chinese or other	1	0	0	0	0	1

Age	Western	Eastern	Northern	RPU	CS/CQ	Force
25 and under	59	88	43	0	0	190
26 to 40	65	55	60	2	2	184
41 to 55	17	24	27	3	2	73
Over 55	0	7	9	1	3	20

Length of service	Western	Eastern	Northern	RPU	CS/CQ	Force
up to 1 year	49	66	38	0	0	153
1yr to 5 years	73	84	64	0	1	222
5 to 10 years	14	8	15	1	0	38
10 to 15 years	0	6	15	3	2	26
15 to 20 years	4	3	8	2	2	19
20 to 25 years	0	2	0	0	0	2
25 years and over	1	3	1	0	2	7
Number of joiners	0	0	0	N/A	N/A	0

Cost reductions

Achieving the required cost reductions across the organisation

The force will maintain a top quartile position for value for money

Data not supplied

Protecting the frontline

The number of full time equivalents (FTE) undertaking response policing, neighbourhood policing and local crime investigation will be protected at a minimum of 2224 on average per month throughout 2011-2012

	Target	Average
Police officer numbers	2224	2226