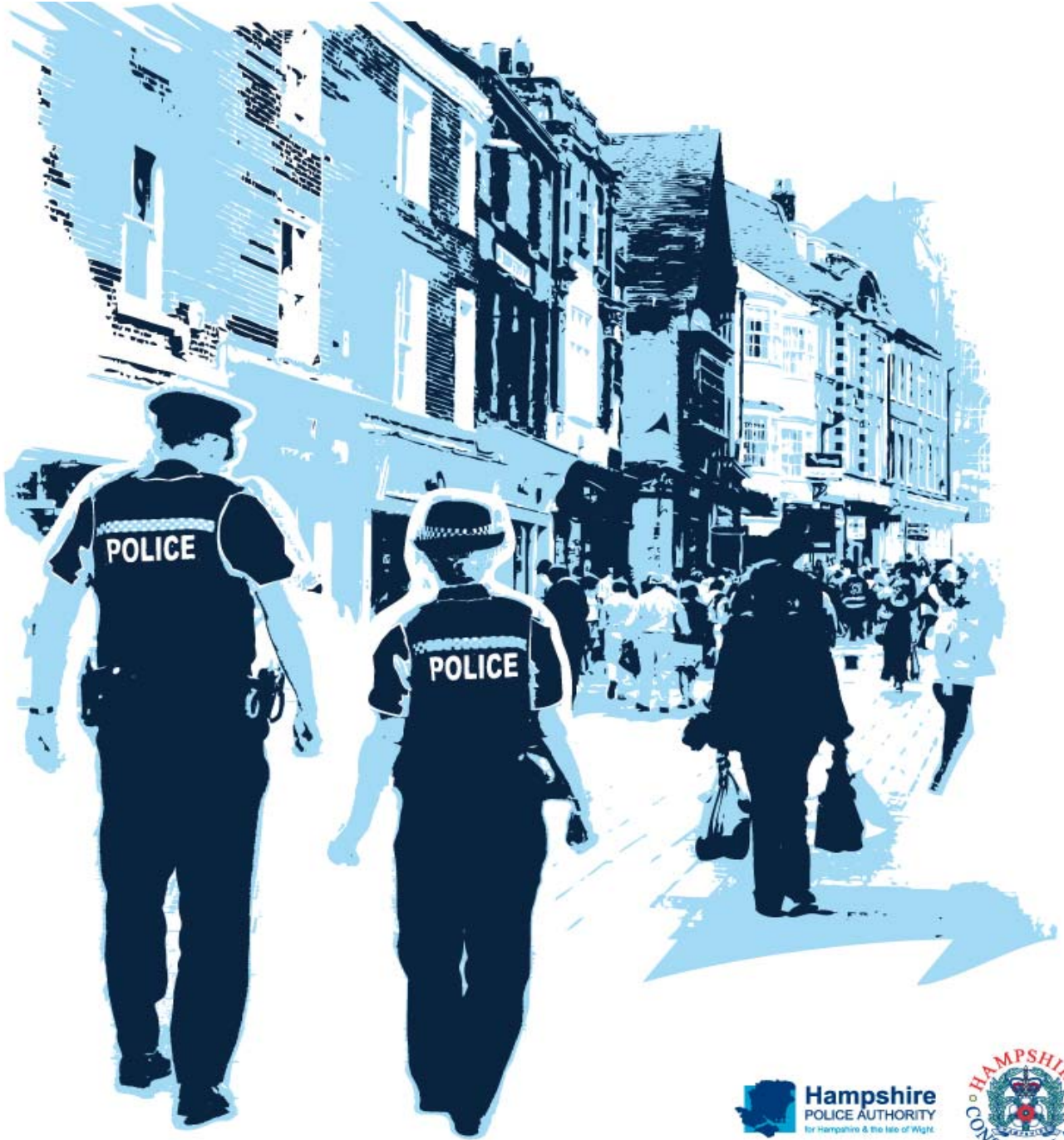


Performance Profile February 2011



2010/11 Reporting Year

This document contains a strategic overview of the Constabulary's performance. It has a variety of performance measures within it. The format of the profile has been aligned to the Policing Priorities identified by the Control Strategy. It provides information on our performance against Force targets, some of the APACS Indicators and the Policing Pledge. It also aims to provide supplementary information to assist in understanding reasons behind the performance in these areas. It has been designed as a headline document that will enable our customers, both internally and externally, to easily assess performance information for key domains. This year additional monitoring information within the six domains of the Policing Priorities will be published quarterly - a calendar of publication is located at the bottom of this page. If during a month an issue is identified which needs to be highlighted this will be done through 'exception reporting'.

A matrix can be found at the front of the profile which reflects our year to date performance against our targets.

Performance in key areas is then explored in more depth with an indication of where each measure has originated - for example, APACS Indicator or a Force Control Strategy (FCS) measure.

Where applicable, within the document, MSG (Most Similar Group) data is published along with the crime and detection data. MSGs are calculated by the Home Office based on a number of socio-demographic & geographic variables which are strongly linked to crime/incident levels and the fear of crime. These groups provide a benchmark for comparison of crime and detection rates. Below the applicable crime tables there are three rows relating to MSG data. The first provides the MSG position for the OCU/Force for that crime type. The second displays OCU Actual, this is the number of offences per 1,000 population. The third row shows the MSG Average which is the total number of offences per 1,000 population divided by the number within the MSG. The same three rows are provided in relation to detection data, where data is provided in % figures rather than per 1,000 population.

Please note: iQuanta data is provisional. Within the profile, Hampshire data is published and compared against the MSG average. The other forces within Hampshire's MSG are: Avon and Somerset, Bedfordshire, Essex Hertfordshire, Kent, Sussex and Thames Valley. We are unable to provide figures from iQuanta for these forces, due to the provisional nature of this data.

This document is then taken forward by key stakeholders within the organisation to the Force Performance Review Group, where it is used to highlight areas of good performance and those for development.

Crime OCU contribute to the following areas within this document, either via investigation, forensic support, and/or review of these crimes: homicide, serious violent, sexual and acquisitive crime, class A drug supply, drug seizures, domestic violence/hate crime, FIU form submissions, gun/knife crime (where this results in a major investigation/forensic support).

This is an evolving document and as such, the contents of which may alter over time and any feedback would be welcomed by the Performance Review Team.

Calendar of Quarterly Reporting

- April - Catching criminals & managing offenders and Protecting our communities
- May - Making the most of our resources and Equipping our team to deliver
- June - Providing an excellent service and An active presence in every neighbourhood
- July - Catching criminals & managing offenders and Protecting our communities
- August - Making the most of our resources and Equipping our team to deliver
- September - Providing an excellent service and An active presence in every neighbourhood
- October - Catching criminals & managing offenders and Protecting our communities
- November - Making the most of our resources and Equipping our team to deliver
- December - Providing an excellent service and An active presence in every neighbourhood
- January - Catching criminals & managing offenders and Protecting our communities
- February - Making the most of our resources and Equipping our team to deliver
- March - The year end profile will have all six domain areas included

MSG Colour Key

Force	OCU
1-2	1-4
3-4	5-8
5-6	9-12
7-8	13-15

Index

Page FCS = Force Control Strategy

Year to date performance matrix

2	Summary	including notes on matrices terminology
3	Index	
4	Year to date targets matrix	

Providing an excellent service

5	National public confidence measure	APACS 2.2	FCS	iQuanta
5	Local confidence survey data		FCS	Consultation & Research Team
6	Overall satisfaction	APACS 1.1	FCS	Consultation & Research Team
6	Being kept informed			Consultation & Research Team
6	Comparative satisfaction of minority ethnic groups	APACS 1.3		Consultation & Research Team
6	Satisfaction of victims of racist incidents	APACS 1.2		Consultation & Research Team
6	MSG user satisfaction data			Consultation & Research Team

An active presence in every neighbourhood

7	Rowdy and nuisance behaviour		FCS	Business Objects
8	Criminal damage		FCS	Business Objects

Catching criminals and managing offenders

9	Serious acquisitive crime	APACS 5.2	FCS	Business Objects
10	Breakdown: Robbery, dwelling burglary, vehicle crime			Business Objects
10	Breakdown: Theft of a motor vehicle, theft from a motor vehicle			Business Objects
10	Organised crime groups		FCS	7 OCU Performance Team

Protecting our communities

11	Violence against the person with injury		FCS	Business Objects
12	Serious violent crime	APACS 5.1		Business Objects
13	Assault with less serious injury	APACS 5.3		Business Objects
14	Reduction in dwelling burglary		FCS	Business Objects

Making the most of our resources

15	BME recruitment		FCS	Personnel
15	Minority ethnic officer recruitment	APACS 3.1		Personnel
15	Minority ethnic police staff recruitment			Personnel
15	Female officer representation	APACS 3.2		Personnel

Equipping our team to deliver

15	Staff confidence in the organisation		FCS	Consultation & Research Team
----	--------------------------------------	--	-----	------------------------------

Monitoring Information for Making the most of our resources

16	Specials Scorecard			Specials team
17	Overtime costs			Finance
18	Specialist support 7 OCU			7 OCU Performance Team
18	Specialist support 8 OCU			8 OCU Performance Team
19	Sickness	APACS 13.1&13.2		Delphi + Personnel - staffing figures
19	Overdue PDRs			Personnel

Monitoring Information for Equipping our team to deliver

20	Financial awareness training			Training Dept
20	Preparing for frontline supervision training			Training Dept

Year to date performance targets matrix

	Target	Actual	Central	Isle of Wight	North & East	Portsmouth	Southampton	Western
Providing an excellent service								
Confidence in local police	55.3%	51.0%	This is a Force measure					
Local confidence measure (latest quarter)	87.3%	77.0%	77.0%	78.0%	79.0%	77.0%	76.0%	78.0%
Overall satisfaction (data for rolling 12 months)	68.0%	68.0%	68.0%	69.0%	68.0%	67.0%	66.0%	73.0%
An active presence in every neighbourhood								
Rowdy & nuisance behaviour (inc vehicle nuisance)	<63457	55602	9301	3721	10688	9140	13562	9190
	OCU specific targets		12571	4164	11724	9907	14193	10898
Reduce criminal damage	<25088	22392	4652	1966	4249	3025	4527	3973
	OCU specific targets		5438	1849	4905	3240	5148	4508
Catching criminals & managing offenders								
Serious acquisitive crime SD	>15%	13.0%	13.8%	14.9%	15.6%	10.6%	11.2%	14.0%
Organised crime group (OCG) - disruptions	>40%	110	Owned by Crime OCU					
Protecting our communities								
Reduce violence against the person with injury	<13115	12960	2650	1150	1968	2365	2913	1914
	OCU specific targets		2664	896	2162	2343	3053	1997
Reduction in dwelling burglary	<4886	4761	743	294	845	899	1289	691
	OCU specific targets		960	234	1028	899	929	837
Making the most of our resources								
BME recruitment	>5%	6.1%	This is a Force measure					
Equipping our staff to deliver								
Staff confidence in the organisation	61%	data unavailable	No data available					
Force Total - targets achieved		7	5	2	6	2	3	5

Notes to be read in conjunction with matrices

All citizen focus data
SD
BME
OCU specific targets

Based on "completely or very satisfied"
Sanction detections
Black and minority ethnic
OCU specific targets are rounded to 0 decimal places; the actual figure may therefore seem the same but appear amber due to this rounding

Force target areas for providing an excellent service

	Target	Actual	Central	Isle of Wight	North & East	Portsmouth	Southampton	Western
Confidence in local police (latest data)	55.3%	51.0%	This is a Force measure					
Local Confidence Measure (latest data)	87.3%	77.0%	77.0%	78.0%	79.0%	77.0%	76.0%	78.0%
Overall satisfaction (rolling 12 months)	68.0%	68.0%	68.0%	69.0%	68.0%	67.0%	66.0%	73.0%

National Public Confidence Measure

APACS 2.2 Force Target

This data is based on 'The police and local council are dealing with the anti-social behaviour and crime issues that matter in this area' The Home Office has set a target to achieve a 12% improvement by 2012 against the baseline of 47.3%. Hampshire aimed to improve by 4% each year, as this is the second year, our target this year is an 8% improvement on baseline which equates to 55.3%

Sep-10

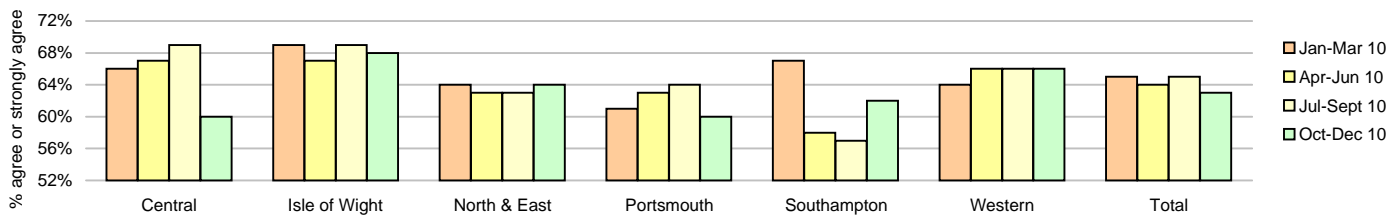
Hampshire	51.0%
MSG Position	4 of 8
MSG average	50.9%

Local Confidence Survey Data

Figures relate to the percentage of respondents who agree or strongly agree with the question. Hampshire's local surveys have a confidence level of +/-4%. This means that changes of less than 4% may not reflect a real change in performance.

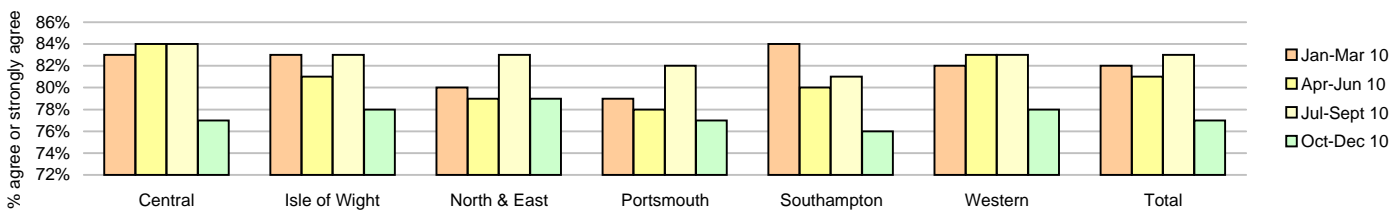
The police are dealing with the things that matter locally

	Central	Isle of Wight	North & East	Portsmouth	Southampton	Western	Force	No. Surveys
January - March 2010	66%	69%	64%	61%	67%	64%	65%	3708
April - June 2010	67%	67%	63%	63%	58%	66%	64%	3612
July - September 2010	69%	69%	63%	64%	57%	66%	65%	3620
October - December 2010	60%	68%	64%	60%	62%	66%	63%	3609



Taking everything into account, I have confidence in the Police in this area

	Central	Isle of Wight	North & East	Portsmouth	Southampton	Western	Force	No. Surveys
January - March 2010	83%	83%	80%	79%	84%	82%	82%	3708
April - June 2010	84%	81%	79%	78%	80%	83%	81%	3612
July - September 2010	84%	83%	83%	82%	81%	83%	83%	3620
October - December 2010	77%	78%	79%	77%	76%	78%	77%	3609



Force target areas for providing an excellent service

Overall satisfaction (user satisfaction survey results)

SPI 1.1 Force Target

Rolling 12 months data relates to: Mar 10 - Feb 11; rolling 3 months data relates to Dec 10 - Feb 11

Overall satisfaction includes burglary, vehicle crime, violent crime and minor injury RTCs for % completely or very satisfied

Target 68%	Central	Isle of Wight	North & East	Portsmouth	Southampton	Western	Total	No. Surveys
Rolling 12 months	68%	69%	68%	67%	66%	73%	68%	7628
Rolling 3 months	65%	76%	72%	65%	70%	76%	70%	1978

Being kept informed (user satisfaction survey results)

Rolling 12 months data relates to: Mar 10 - Feb 11; rolling 3 months data relates to Dec 10 - Feb 11

Being kept informed includes burglary, vehicle crime, violent crime and minor injury RTCs for % completely or very satisfied

	Central	Isle of Wight	North & East	Portsmouth	Southampton	Western	Total	No. Surveys
Rolling 12 months	57%	58%	56%	57%	55%	61%	57%	7460
Rolling 3 months	54%	56%	55%	54%	56%	63%	56%	1947

Comparative satisfaction of minority ethnic groups

SPI 1.3

Data relates to interviews which took place Mar 10 - Feb 11

These figures are for overall satisfaction for burglary, vehicle crime, violent crime, minor injury RTCs and racist incidents

	Completely and very satisfied	Completely, very and fairly satisfied	No. Surveys
White	68.8%	84.8%	6494
Minority Ethnic	56.4%	78.5%	413
Satisfaction Gap	12.4%	6.3%	

Satisfaction of victims of racist incidents

SPI 1.2

These figures relate to interviews which took place Jan 10 - Dec 10; these will be updated quarterly

Racist incident overall satisfaction = % completely or very satisfied

	Central	Isle of Wight	North & East	Portsmouth	Southampton	Western	Total
%	65%	100%	59%	67%	70%	63%	67%
Number of surveys	31	8	27	46	56	27	195

MSG information for user satisfaction

Latest iQuanta data for MSG for the 12 months ending December 2010 (iQuanta calculate satisfaction % based on those responding that they are completely, very or fairly satisfied)

	Previous MSG position	Current MSG position	Change		Previous MSG position	Current MSG position	Change
Vehicle crime				Burglary			
Ease of contact	1/8	2/8	↓	Ease of contact	3/8	3/8	↔
Actions taken	4/8	4/8	↔	Actions taken	5/8	3/8	↑
Follow up	4/8	5/8	↓	Follow up	1/8	1/8	↔
Treatment	4/8	4/8	↔	Treatment	6/8	6/8	↔
Whole Experience	4/8	5/8	↓	Whole Experience	4/8	3/8	↑
Violent crime				RTC (minor injury)			
Ease of contact	4/8	4/8	↔	Ease of contact	1/8	1/8	↔
Actions taken	3/8	4/8	↓	Actions taken	2/8	2/8	↔
Follow up	6/8	7/8	↓	Follow up	1/8	1/8	↔
Treatment	6/8	6/8	↔	Treatment	2/8	1/8	↑
Whole Experience	6/8	6/8	↔	Whole Experience	3/8	3/8	↔

All users (excluding racist incidents)

Ease of contact	1/8	2/8	↓
Actions taken	2/8	3/8	↓
Follow up	1/8	3/8	↓
Treatment	4/8	5/8	↓
Whole Experience	3/8	4/8	↓

Force target areas for an active presence in every neighbourhood

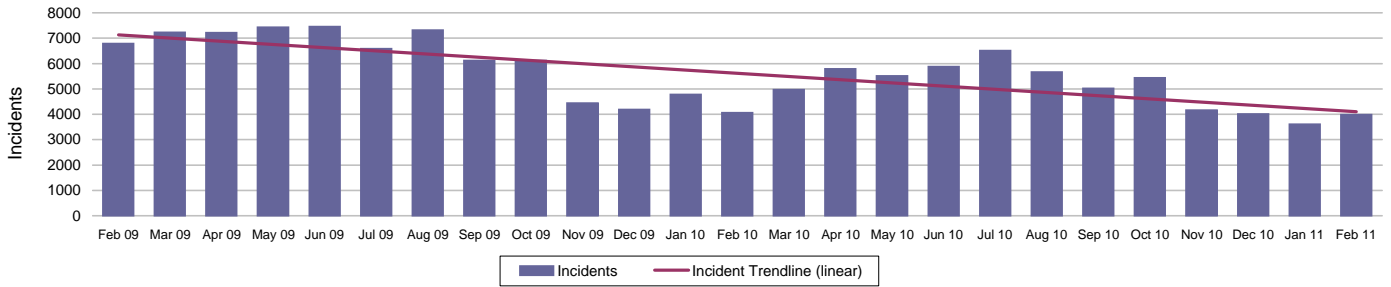
	Target	Actual	Central	Isle of Wight	North & East	Portsmouth	Southampton	Western
Rowdy & nuisance behaviour (inc Vehicle Nuisance)	63457	55602	9301	3721	10688	9140	13562	9190
	OCU specific targets		12571	4164	11724	9907	14193	10898
Reduce criminal damage	25088	22392	5438	1966	4249	3025	4527	3973
	OCU specific targets		5438	1849	4905	3240	5148	4508

Rowdy & nuisance behaviour (including vehicle)

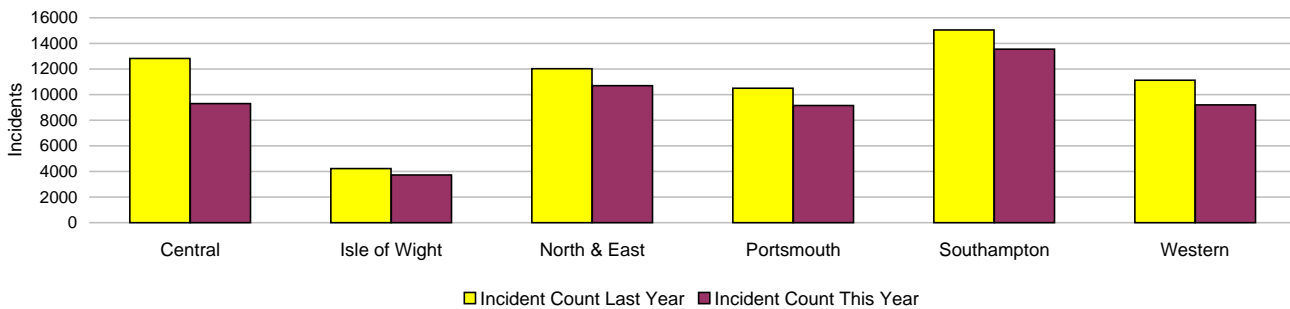
Force Target

In 2009-2010 Rowdy and Nuisance included Inappropriate use of Fireworks, Rowdy & Inconsiderate, Substance Misuse and Street Drinking, with Vehicle Related Nuisance being a separate entity for monitoring purposes however the decision this year has been to bring all key nuisance elements into one section. This data is sourced from RMS and does not reflect the complete NSIR return for Hampshire.

This target is based on a subset of the anti-social behaviour categories, it does not cover all aspects of anti-social behaviour.



Incidents	Central	Isle of Wight	North & East	Portsmouth	Southampton	Western	Force
YTD Incidents	9301	3721	10688	9140	13562	9190	55602
YTD Target	12571	4164	11724	9907	14193	10898	63457
YTD 09/10 Incidents	12831	4223	12013	10493	15058	11115	65733
This month	556	211	848	696	1008	670	3989
% change from 09/10	-27.51%	-11.89%	-11.03%	-12.89%	-9.93%	-17.32%	-15.41%



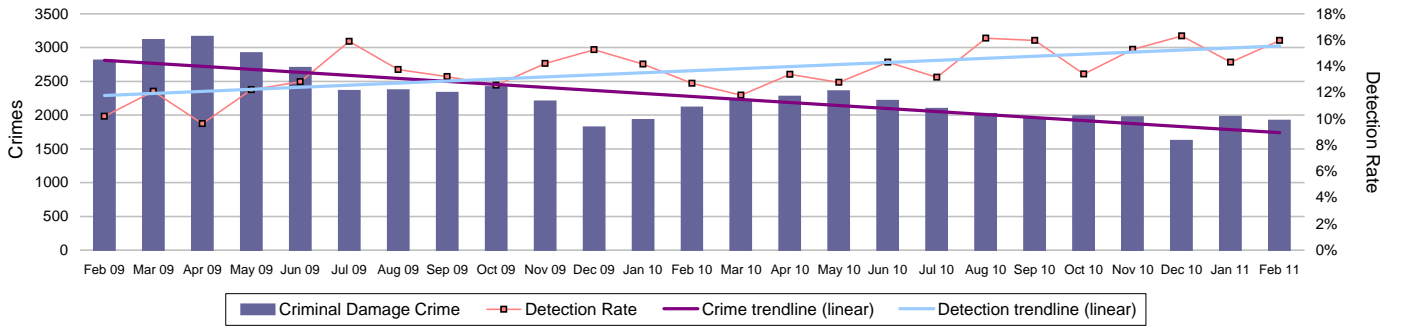
Note: MSG data is always published a month in arrears.

For an explanation of this data, refer to the Summary on page 2

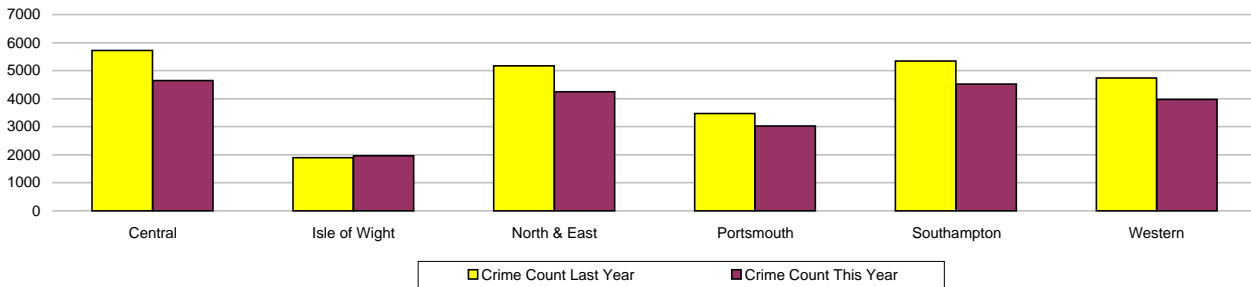
February 2011

Force target areas for an active presence in every neighbourhood

Criminal damage



Crimes	Central	Isle of Wight	North & East	Portsmouth	Southampton	Western	Force
YTD Crimes	4652	1966	4249	3025	4527	3973	22392
YTD Target	5438	1849	4905	3240	5148	4508	25088
YTD 09/10 Crimes	5723	1893	5173	3473	5345	4738	26345
This month	396	132	392	275	396	331	1922
% change from 09/10	-18.71%	3.86%	-17.86%	-12.90%	-15.30%	-16.15%	-15.00%
MSG position	14 of 15	15 of 15	9 of 15	10 of 15	13 of 15	9 of 15	8 of 8
MSG actual	2.714	3.352	2.46	3.602	4.424	2.514	2.971
MSG average	2.467	2.793	2.402	3.395	3.724	2.473	2.723



Detections	Central	Isle of Wight	North & East	Portsmouth	Southampton	Western	Force
YTD Detection Rate	14.08%	17.29%	13.91%	16.56%	14.07%	13.49%	14.56%
This month	11.87%	24.24%	12.50%	20.36%	18.94%	14.50%	15.97%
YTD 09/10 Detections	12.91%	15.74%	13.15%	13.48%	12.68%	12.54%	13.12%
MSG position	7 of 15	5 of 15	8 of 15	2 of 15	7 of 15	8 of 15	6 of 8
MSG actual	13.19%	16.42%	13.57%	15.92%	13.83%	13.03%	14.01%
MSG average	13.42%	14.65%	13.85%	13.32%	14.27%	13.34%	14.19%

Note: Detections refer to Sanction Detections ONLY



Note: MSG data is always published a month in arrears.

For an explanation of this data, refer to the Summary on page 2

February 2011

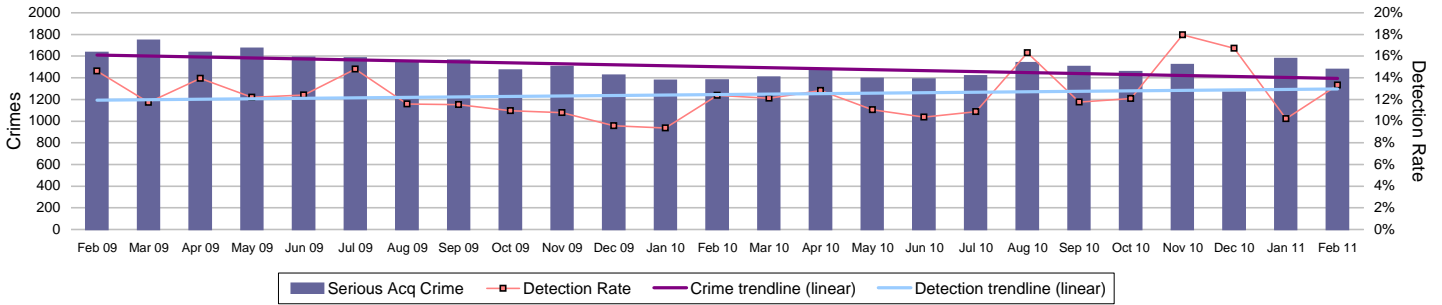
Force target areas for catching criminals and managing offenders

	Target	Actual	Central	Isle of Wight	North & East	Portsmouth	Southampton	Western
Serious acquisitive detection rate	15%	13.0%	13.8%	14.9%	15.6%	10.6%	11.2%	14.0%
OCG disruptions	40%	110%	Owned by Crime OCU					

Serious acquisitive crime

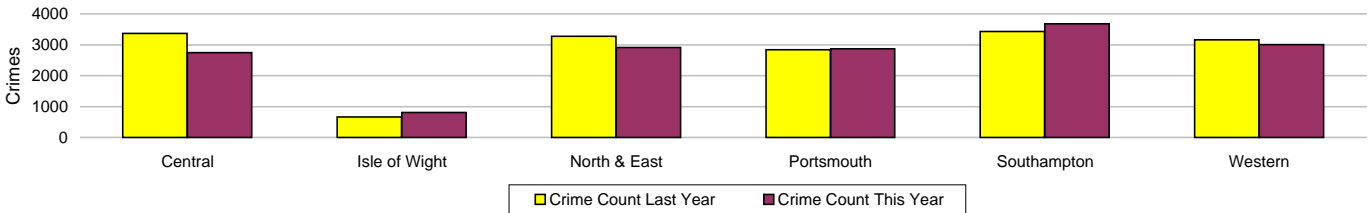
APACS 5.2

Serious acquisitive crime consists of crimsec codes 28, 29, 34A, 34B, 37/2, 45 and 48



Crimes

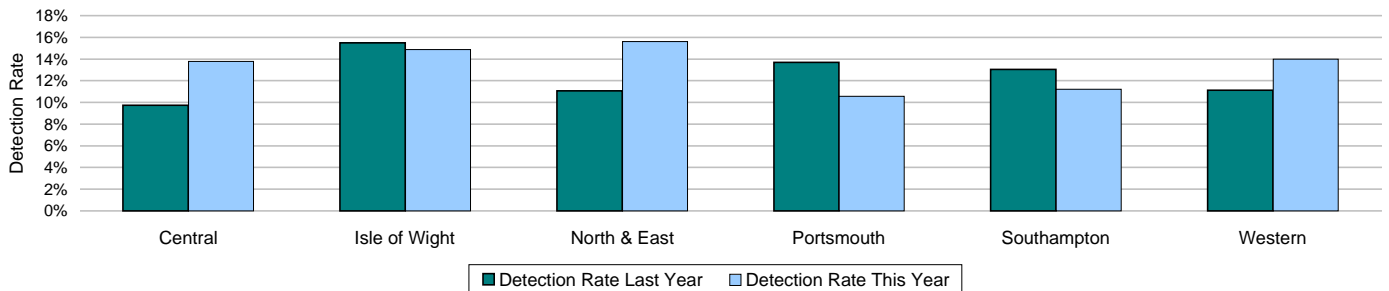
	Central	Isle of Wight	North & East	Portsmouth	Southampton	Western	Force
YTD Crimes	2749	807	2908	2870	3676	3003	16013
YTD 09/10 Crimes	3368	665	3272	2843	3432	3164	16744
This month	255	73	311	212	321	306	1478
% change from 09/10	-18.38%	21.35%	-11.12%	0.95%	7.11%	-5.09%	-4.37%
MSG actual	1 of 15	5 of 15	7 of 15	6 of 15	10 of 15	12 of 15	3 of 8
MSG average	1.397	1.583	1.823	4.098	4.394	1.992	2.315
MSG average	2.176	1.975	2.083	4.465	4.153	1.892	2.755



Detections

Target >15%	Central	Isle of Wight	North & East	Portsmouth	Southampton	Western	Force
YTD Detection Rate	13.79%	14.87%	15.61%	10.56%	11.21%	13.99%	13.04%
This month	7.06%	8.22%	9.32%	14.15%	11.53%	25.16%	13.33%
YTD 09/10 Detections	9.74%	15.49%	11.06%	13.68%	13.05%	11.13%	11.84%
MSG position	11 of 15	10 of 15	6 of 15	12 of 15	12 of 15	13 of 15	4 of 8
MSG actual	13.19%	15.28%	15.14%	10.94%	11.85%	12.59%	12.83%
MSG average	14.61%	18.36%	13.56%	13.29%	15.55%	14.65%	13.93%

Note: Detections refer to Sanction Detections ONLY



Force target areas for catching criminals and managing offenders

Serious acquisitive crime breakdown

Robbery

Year to date	Central	Isle of Wight	North & East	Portsmouth	Southampton	Western	Force
Crimes	87	25	175	228	374	92	981
09/10 crimes	90	21	168	213	372	119	983
% change from 09/10	-3.33%	19.05%	4.17%	7.04%	0.54%	-22.69%	-0.20%
MSG position	8 of 15	5 of 15	8 of 15	6 of 15	11 of 15	8 of 15	2 of 8
Detection rate	27.59%	36.00%	17.71%	19.30%	21.12%	25.00%	21.41%
MSG position	8 of 15	5 of 15	13 of 15	13 of 15	11 of 15	12 of 15	5 of 8
February 2011	Central	Isle of Wight	North & East	Portsmouth	Southampton	Western	Force
Crimes	11	2	17	12	22	8	72
Detection rate	18.18%	0.00%	5.88%	58.33%	18.18%	25.00%	22.22%

Dwelling burglary

Year to date	Central	Isle of Wight	North & East	Portsmouth	Southampton	Western	Force
Crimes	743	294	845	899	1289	691	4761
09/10 crimes	1027	230	1063	906	977	846	5049
% change from 09/10	-27.65%	27.83%	-20.51%	-0.77%	31.93%	-18.32%	-5.70%
MSG position	2 of 15	5 of 15	8 of 15	4 of 15	11 of 15	4 of 15	3 of 8
Detection rate	18.44%	11.56%	16.69%	11.46%	16.14%	19.83%	15.96%
MSG position	10 of 15	15 of 15	11 of 15	12 of 15	10 of 15	7 of 15	5 of 8
February 2011	Central	Isle of Wight	North & East	Portsmouth	Southampton	Western	Force
Crimes	60	35	62	92	108	68	425
Detection rate	3.33%	5.71%	35.48%	7.61%	18.52%	36.76%	18.35%

Vehicle crime

Year to date	Central	Isle of Wight	North & East	Portsmouth	Southampton	Western	Force
Crimes	1919	488	1888	1743	2013	2220	10271
09/10 crimes	2251	414	2041	1724	2083	2199	10712
% change from 09/10	-14.75%	17.87%	-7.50%	1.10%	-3.36%	0.95%	-4.12%
MSG position	4 of 15	3 of 15	5 of 15	10 of 15	8 of 15	14 of 15	2 of 8
Detection rate	11.36%	15.78%	14.94%	8.95%	6.21%	11.71%	10.89%
MSG position	10 of 15	9 of 15	3 of 15	10 of 15	13 of 15	12 of 15	4 of 8
February 2011	Central	Isle of Wight	North & East	Portsmouth	Southampton	Western	Force
Crimes	184	36	232	108	191	230	981
Detection rate	7.61%	11.11%	2.59%	14.81%	6.81%	21.74%	10.50%
Detection numbers	14	4	6	16	13	50	103

Theft of a motor vehicle

Year to date	Central	Isle of Wight	North & East	Portsmouth	Southampton	Western	Force
Crimes	386	119	455	265	484	369	2078
MSG position	1 of 15	3 of 15	7 of 15	1 of 15	11 of 15	5 of 15	1 of 8
Detection rate	19.17%	31.93%	23.30%	13.58%	9.92%	21.95%	18.43%
MSG position	9 of 15	3 of 15	1 of 15	8 of 15	13 of 15	4 of 15	3 of 8
February 2011	Central	Isle of Wight	North & East	Portsmouth	Southampton	Western	Force
Crimes	44	9	37	25	36	45	196
Detection rate	20.45%	11.11%	13.51%	12.00%	13.89%	20.00%	16.33%
Detection numbers	9	1	5	3	5	9	32

Theft from a motor vehicle

Year to date	Central	Isle of Wight	North & East	Portsmouth	Southampton	Western	Force
Crimes	1533	369	1433	1478	1529	1851	8193
MSG position	5 of 15	6 of 15	5 of 15	13 of 15	8 of 15	14 of 15	3 of 8
Detection rate	9.39%	10.57%	12.28%	8.12%	5.04%	9.67%	8.97%
MSG position	10 of 15	9 of 15	11 of 15	8 of 15	12 of 15	12 of 15	4 of 8
February 2011	Central	Isle of Wight	North & East	Portsmouth	Southampton	Western	Force
Crimes	140	27	195	83	155	185	785
Detection rate	3.57%	11.11%	0.51%	15.66%	5.16%	22.16%	9.04%
Detection numbers	5	3	1	13	8	41	71

Robbery, dwelling burglary and vehicle crime are the component parts of serious acquisitive crime. These individual crime types do not have targets.

Number of Organised Crime Groups (OCGs) disrupted

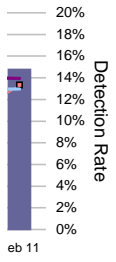
The Force target for 2010/11 is to dismantle or disrupt at least 40% of identified organised crime groups as a result of police or multi agency activity.

YTD Feb 2011	2009/2010	2010/2011	Disrupted against identified
Number of OCGs identified and mapped	50	10	110%
Number of OCGs disrupted or partially disrupted through Crime OCU activity	33	11	
Number of OCGs subject to tactical activity	113	93	

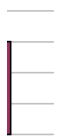
Note: Number of OCGs subject to tactical activity has been corrected for 2010/11 - other figures remain the same for May.

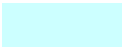


Force Target



eb 11





Force Target

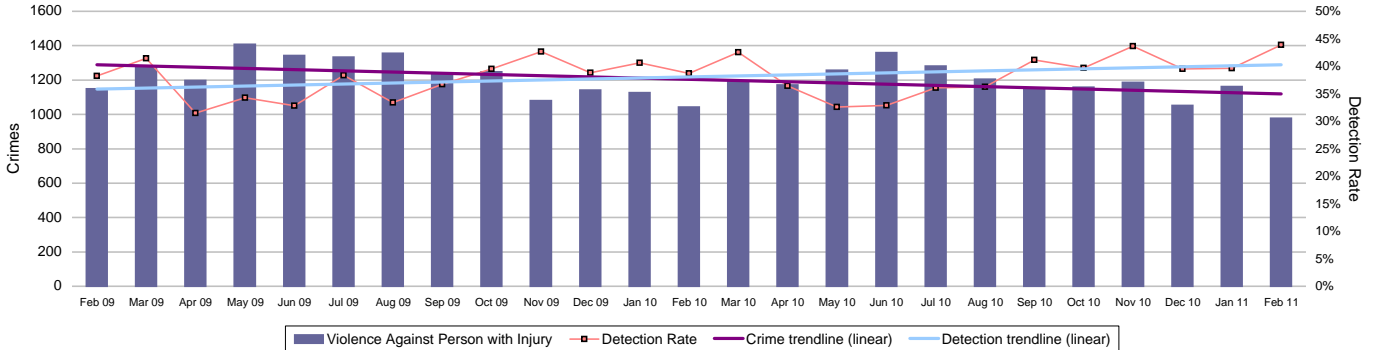
Force target areas for protecting our communities

	Target	Actual	Central	Isle of Wight	North & East	Portsmouth	Southampton	Western
Reduction of VAP with injury	13115	12960	2650	1150	1968	2365	2913	1914
	OCU specific targets		2664	896	2162	2343	3053	1997
Reduction in dwelling burglary	4886	4761	743	294	845	899	1289	691
	OCU specific targets		960	234	1028	899	929	837

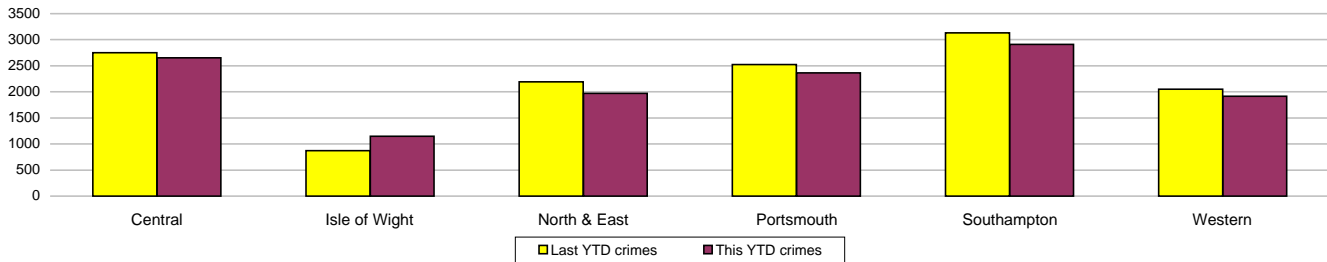
Violence against the person (VAP) with injury

VAP with injury crimsec codes 1, 2, 4.1-4.4, 4.6-4.10, 5A, 5B, 5C, 8F, 8G, 8H, 8J, 8K and 37.1

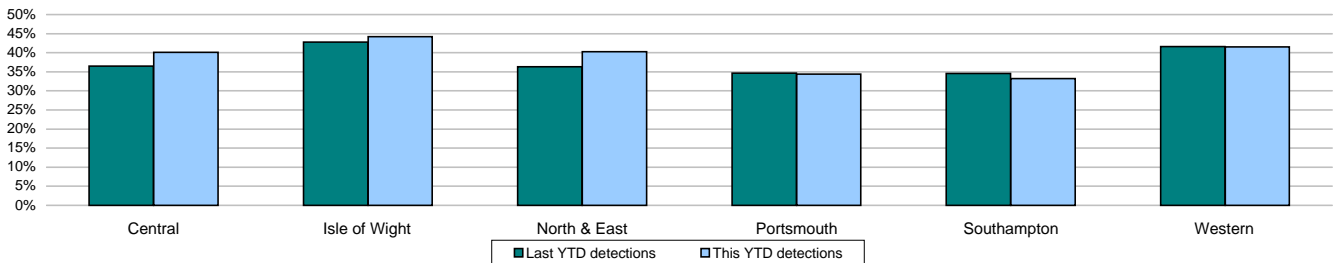
Force Target



Crimes	Central	Isle of Wight	North & East	Portsmouth	Southampton	Western	Force
YTD Crimes	2650	1150	1968	2365	2913	1914	12960
YTD Target	2664	896	2162	2343	3053	1997	13115
YTD 09/10 Crimes	2748	874	2191	2524	3129	2051	13517
This month	232	83	145	170	209	139	978
% change from 09/10	-3.57%	31.58%	-10.18%	-6.30%	-6.90%	-6.68%	-4.12%
MSG position	15 of 15	14 of 15	8 of 15	14 of 15	15 of 15	13 of 15	8 of 8
MSG actual	1.481	1.997	1.114	3.16	3.482	1.291	1.828
MSG average	1.131	1.498	1.071	1.984	2.136	1.109	1.341



Detections	Central	Isle of Wight	North & East	Portsmouth	Southampton	Western	Force
YTD Detection Rate	40.11%	44.17%	40.24%	34.42%	33.20%	41.54%	38.11%
This month	36.21%	56.63%	42.76%	38.24%	40.19%	62.59%	43.87%
YTD 09/10 Detections	36.46%	42.79%	36.28%	34.67%	34.55%	41.59%	36.84%
MSG position	11 of 15	7 of 15	11 of 15	10 of 15	14 of 15	10 of 15	6 of 8
MSG actual	39.34%	43.33%	39.99%	35.46%	33.27%	40.43%	37.86%
MSG average	42.32%	43.50%	42.97%	38.52%	40.42%	42.96%	42.10%



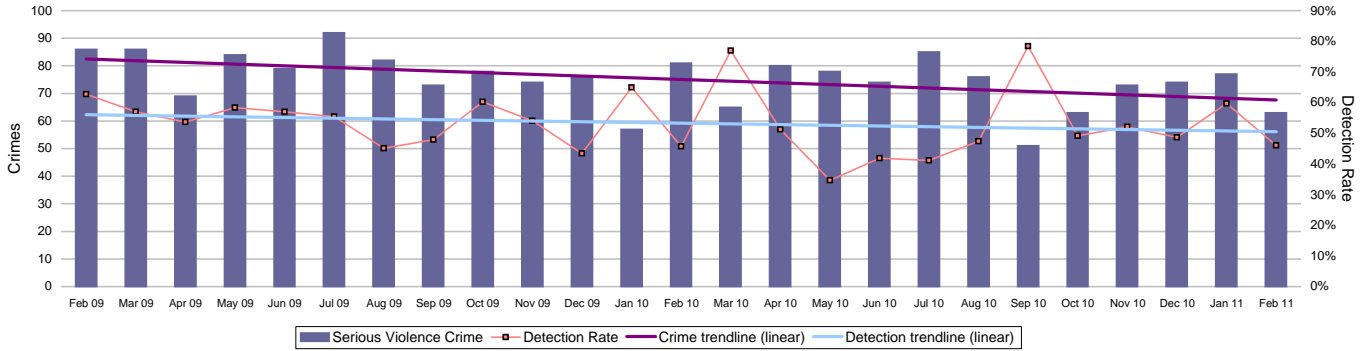
Note: MSG data is always published a month in arrears. For an explanation of this data, refer to the Summary on page 2

Force target areas for protecting our communities

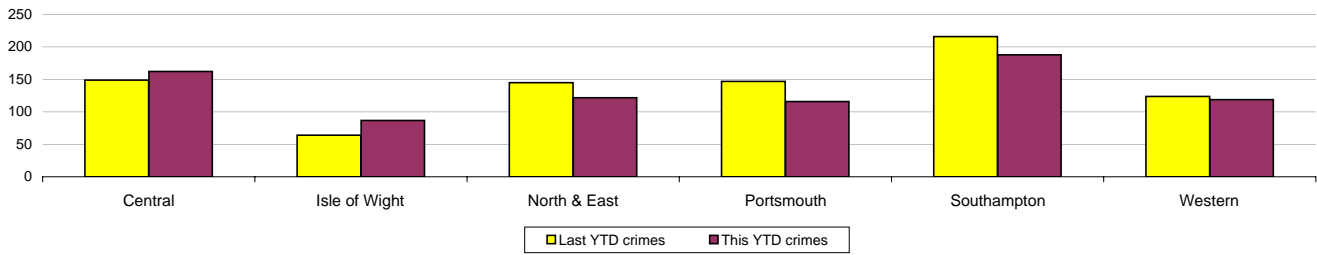
Serious violent crime

APACS 5.1

Serious violent crime consists of crimsec codes 1, 2, 4.1-4.4, 4.6, 4.8, 5A, 5B, 5C, 8F, 8H and 37.1

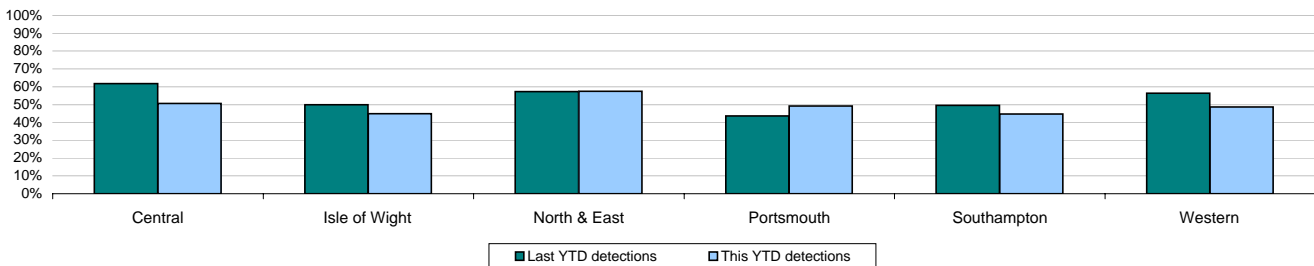


Crimes	Central	Isle of Wight	North & East	Portsmouth	Southampton	Western	Force
YTD Crimes	162	87	122	116	188	119	794
YTD 09/10 Crimes	149	64	145	147	216	124	845
This month	18	5	14	12	11	3	63
% change from 09/10	8.72%	35.94%	-15.86%	-21.09%	-12.96%	-4.03%	-6.04%
MSG position	13 of 15	14 of 15	11 of 15	8 of 15	12 of 15	8 of 15	7 of 8
MSG actual	0.122	0.157	0.078	0.157	0.275	0.068	0.126
MSG average	0.088	0.117	0.075	0.191	0.2	0.07	0.095



Detections	Central	Isle of Wight	North & East	Portsmouth	Southampton	Western	Force
YTD Detection Rate	50.62%	44.83%	57.38%	49.14%	44.68%	48.74%	49.12%
This month	38.89%	0.00%	57.14%	25.00%	90.91%	33.33%	46.03%
YTD 09/10 Detections	61.74%	50.00%	57.24%	43.54%	49.54%	56.45%	53.02%
MSG position	12 of 15	10 of 15	6 of 15	5 of 15	12 of 15	12 of 15	5 of 8
MSG actual	49.71%	46.94%	57.89%	53.73%	42.58%	50.34%	49.66%
MSG average	57.58%	52.13%	57.91%	47.87%	51.19%	61.38%	50.44%

Note: Detections refer to Sanction Detections ONLY



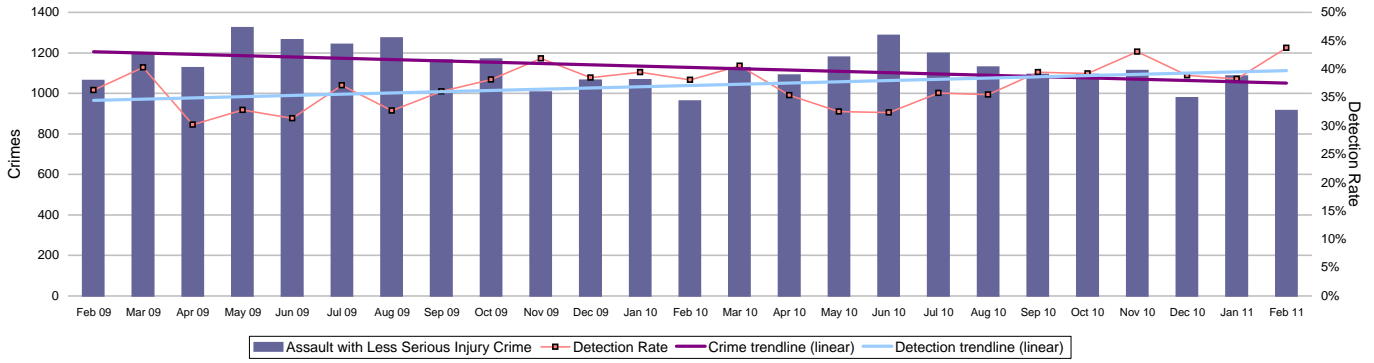
Note: MSG data is always published a month in arrears. For an explanation of this data, refer to the Summary on page 2

Force target areas for protecting our communities

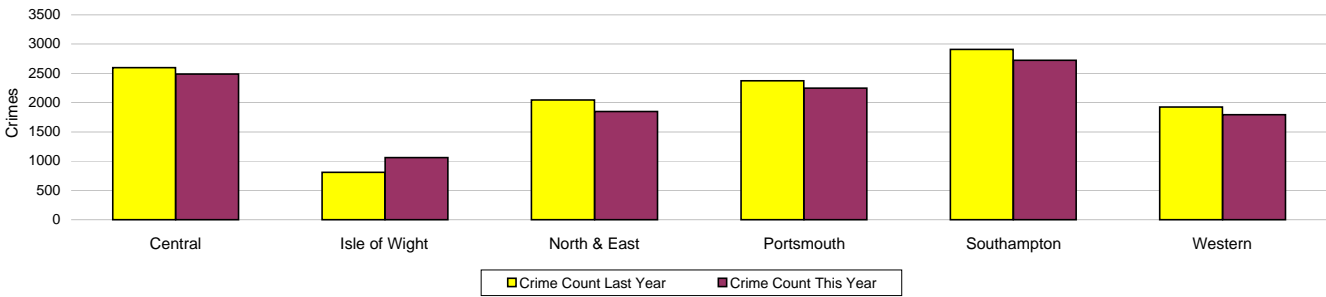
Assault with less serious injury

APACS 5.3

Assault with less serious injury consists of crimsec codes 8G and 8J

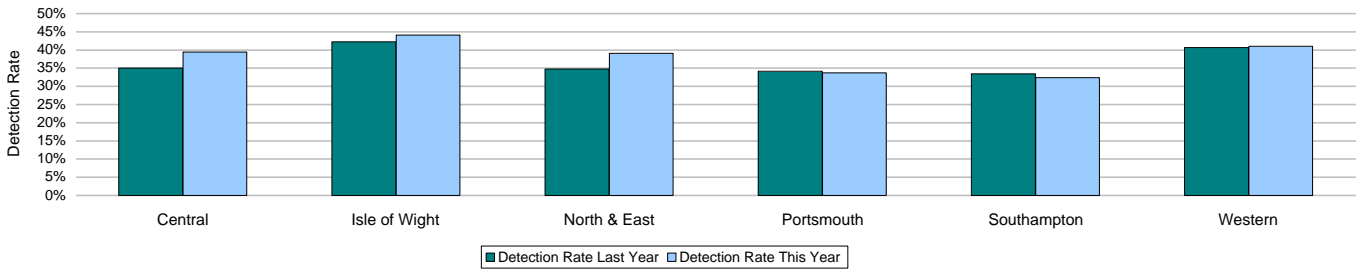


Crimes	Central	Isle of Wight	North & East	Portsmouth	Southampton	Western	Force
YTD Crimes	2486	1063	1846	2248	2725	1793	12161
YTD 09/10 Crimes	2598	810	2046	2376	2911	1925	12666
This month	214	78	131	158	198	136	915
% change from 09/10	-4.31%	31.23%	-9.78%	-5.39%	-6.39%	-6.86%	-3.99%
MSG position	15 of 15	14 of 15	8 of 15	14 of 15	15 of 15	14 of 15	8 of 8
MSG actual	1.358	1.84	1.036	3.002	3.207	1.218	1.701
MSG average	1.043	1.38	0.996	1.792	1.936	1.038	1.245



Detections	Central	Isle of Wight	North & East	Portsmouth	Southampton	Western	Force
YTD Detection Rate	39.46%	44.12%	39.11%	33.67%	32.40%	41.05%	37.40%
This month	35.98%	60.26%	41.22%	39.24%	37.37%	63.24%	43.72%
YTD 09/10 Detections	35.03%	42.22%	34.80%	34.13%	33.46%	40.68%	35.78%
MSG position	11 of 15	7 of 15	11 of 15	10 of 15	14 of 15	10 of 15	6 of 8
MSG actual	38.70%	43.02%	38.82%	34.50%	32.62%	39.68%	37.07%
MSG average	41.29%	42.80%	42.13%	37.53%	39.33%	41.80%	41.50%

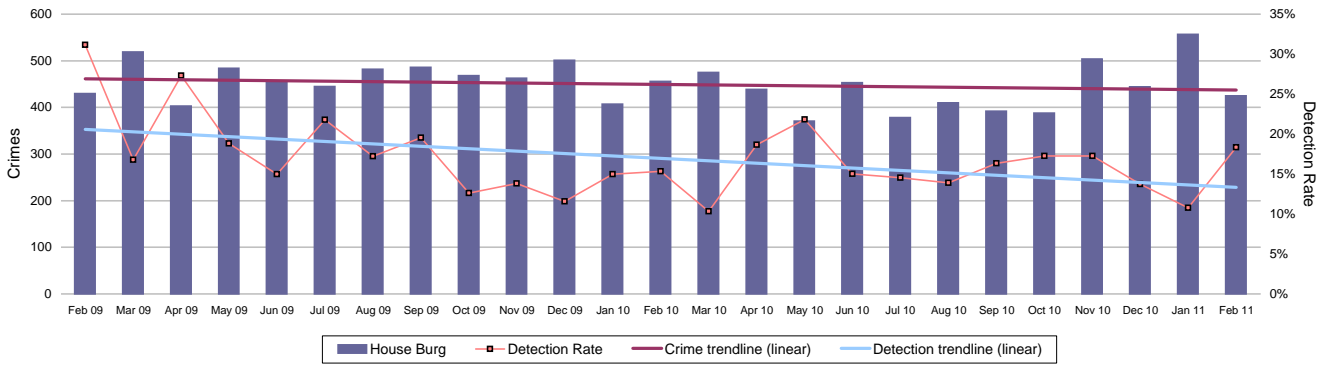
Note: Detections refer to Sanction Detections ONLY



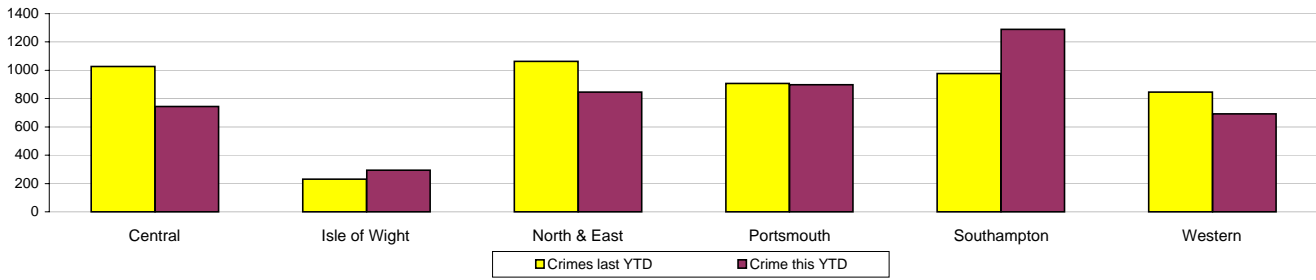
Force target areas for protecting our communities

Reduction in Dwelling Burglary

Force Target

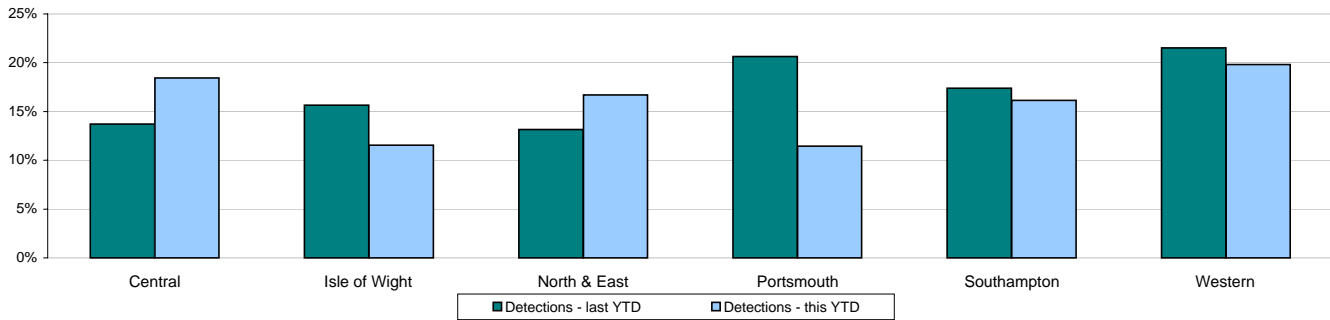


Crimes	Central	Isle of Wight	North & East	Portsmouth	Southampton	Western	Force
YTD Crimes	743	294	845	899	1289	691	4761
YTD Target	960	234	1028	899	929	837	4886
YTD 09/10 Crimes	1027	230	1063	906	977	846	5049
This month	60	35	62	92	108	68	425
% change from 09/10	-27.65%	27.83%	-20.51%	-0.77%	31.93%	-18.32%	-5.70%
MSG position	2 of 15	5 of 15	8 of 15	4 of 15	11 of 15	4 of 15	3 of 8
MSG actual	1.039	1.568	1.716	4.334	4.268	1.241	1.888
MSG average	1.984	1.663	1.829	2.822	3.67	1.649	2.51



Detections	Central	Isle of Wight	North & East	Portsmouth	Southampton	Western	Force
YTD Detection Rate	18.44%	11.56%	16.69%	11.46%	16.14%	19.83%	15.96%
This month	3.33%	5.71%	35.48%	7.61%	18.52%	36.76%	18.35%
YTD 09/10 Detections	13.73%	15.65%	13.17%	20.64%	17.40%	21.51%	16.95%
MSG position	10 of 15	15 of 15	11 of 15	12 of 15	10 of 15	7 of 15	5 of 8
MSG actual	17.15%	12.50%	13.70%	15.44%	15.27%	18.07%	14.98%
MSG average	17.98%	22.48%	17.63%	12.45%	18.04%	17.93%	17.74%

Note: Detections refer to Sanction Detections ONLY



Force target areas for making the most of our resources

Force target areas for equipping our staff to deliver

	Target	Actual	Central	Isle of Wight	North & East	Portsmouth	Southampton	Western
BME recruitment	5% of all recruits	6.1%	This is a Force measure					

	Target	Actual	Central	Isle of Wight	North & East	Portsmouth	Southampton	Western
Staff confidence in the organisation	61%	data unavailable	No data available					

Minority ethnic recruitment

Force Target

The 2010/11 target is based on all police staff and police officer recruits. Data published previously has related only to police officer recruitment.

Target = 5%	All recruits	Minority ethnic recruits	%
YTD Feb 2010	246	15	6.1%

Minority ethnic police officer recruitment

APACS 3.1

	All recruits	Minority ethnic recruits	%
YTD Feb 2010	79	9	11.4%

Minority ethnic police staff recruitment

	All recruits	Minority ethnic recruits	%
YTD Feb 2010	167	6	3.6%

Female officer representation

APACS 3.2

	Male strength	Female strength	%
YTD Feb 2010	2591.6	1034.7	28.53%

Staff confidence in the organisation

Force Target

This is a new target area for 2010/11 based up on the results of the staff survey. The initial staff survey was undertaken in May 2010. This survey provided a baseline figure on which a target could be established. The agreed target questions is: "Taking everything into consideration I am satisfied with my job". The results of the May survey showed 59% of those who responded to the survey agreed or strongly agreed with this statement. It was therefore agreed that a suitable target for 2010/11 is to achieve at least 61% the next time the survey is undertaken. It is currently proposed that the next survey is undertaken in May 2011.

Monitoring information for making the most of our resources

Specials scorecard

Special Constable Balanced Scorecard

	Central	Isle of Wight	North & East	Portsmouth	Southampton	Western	RPU	Other	Force	Average
Total number of officers	91	18	88	73	63	86	4	7	430	n/a
Total number of operational hours	949	328	1317	889	747	921	135	8	5294.1	n/a
Number of operational hours per 1000 population	2.3	2.4	3.0	4.7	3.9	2.6	N/A	N/A	18.9	3
Average number of operational hours per officer	10.4	18.2	15.0	12.2	11.9	10.7	33.8	1.1	113.3	14
Leavers joining regular service or transferring to another Force	1	0	0	1	1	1	0	0	4	1
Leavers not joining regular service or transferring to another Force	2	0	2	1	0	1	1	0	7	1
Number of officers completing 16 or more hours duty per month	51	11	57	33	26	43	3	5	229	n/a
% of Officers completing 16 or more hours duty per month	56.00%	61.00%	63.00%	45.00%	41.00%	50.00%	75.00%	71.00%	53.25%	

Gender	Central	Isle of Wight	North & East	Portsmouth	Southampton	Western	RPU	Other	Force
Male	57	12	69	53	41	65	4	6	307
Female	34	6	19	20	22	21	0	1	123

Ethnicity	Central	Isle of Wight	North & East	Portsmouth	Southampton	Western	RPU	Other	Force
White	90	18	85	71	60	86	4	7	421
Mixed	1	0	0	1	0	0	0	0	2
Black or black British	0	0	2	0	2	0	0	0	4
Asian or asian British	0	0	1	1	0	0	0	0	2
Chinese or other	0	0	0	0	1	0	0	0	1
Not stated	0	0	0	0	0	0	0	0	0

Age	Central	Isle of Wight	North & East	Portsmouth	Southampton	Western	RPU	Other	Force
25 and under	36	5	28	45	23	37	0	0	174
26 to 40	33	8	36	19	36	31	0	2	165
41 to 55	17	3	19	8	5	16	3	2	73
Over 55	5	2	4	1	0	2	1	3	18

Length of service	Central	Isle of Wight	North & East	Portsmouth	Southampton	Western	RPU	Other	Force
up to 1 year	36	6	31	36	22	37	0	0	168
1yr to 5 years	35	8	35	33	38	31	0	1	181
5 to 10 years	8	1	9	2	3	7	1	0	31
10 to 15 years	5	1	7	2	0	3	2	3	23
15 to 20 years	3	1	5	0	0	7	1	1	18
20 to 25 years	2	0	0	0	0	0	0	0	2
25 years and over	2	1	1	0	0	1	0	2	7
Number of joiners	6	0	6	6	6	10	N/A	N/A	34

Monitoring information for making the most of our resources

Basic overtime costs

Due to payroll running one month and 15 days in arrears, this report represents overtime spend to 15/01/2011 and therefore represents 80.7% of the year

	Central	Isle of Wight	North & East	Portsmouth	Southampton	Western	Crime	Operations	CWUN
PC, DC, PS, DS Establishment	541	196	506	367	443	469	347	338	29
Strength + or - establishment at 30/01/2011	7	5	15	10	10	11	-12	5	-2
OCU budgeted police basic pay	£20,149,300.00	£7,594,600.00	£18,690,700.00	£13,765,800.00	£16,325,400.00	£17,418,700.00	£13,488,000.00	£13,923,400.00	£1,517,100.00
OCU budgeted police regular overtime from ZBB	£430,300.00	£182,800.00	£572,400.00	£258,000.00	£511,800.00	£523,400.00	£481,800.00	£306,300.00	£90,000.00
Officer OT as % of Basic Pay	2.14%	2.41%	3.06%	1.87%	3.13%	3.00%	3.57%	2.20%	5.93%
Budgeted OT / officer	£796	£933	£1,132	£703	£1,156	£1,117	£1,390	£906	£3,103
Spend to date	£283,423	£141,997	£334,197	£130,758	£342,504	£265,577	£257,799	£218,014	£54,837
Overtime spend per officer, year to date	£524.07	£724.47	£661.06	£356.26	£773.50	£566.75	£743.77	£645.01	£1,890.93
% of overtime budgeted overtime spent, year to date	65.87%	77.68%	58.39%	50.68%	66.92%	50.74%	53.51%	71.18%	60.93%

Bank holiday overtime

	Central	Isle of Wight	North & East	Portsmouth	Southampton	Western	Crime	Operations	CWUN
OCU budgeted police BH overtime	£296,100.00	£106,400.00	£251,600.00	£184,800.00	£183,600.00	£203,400.00	£109,100.00	£277,800.00	£22,400.00
% OCU budgeted police BH spent, year to date	106%	100%	103%	104%	115%	117%	74%	91%	140%
% bank holidays elapsed, year to date	100%	100%	100%	100%	100%	100%	100%	100%	100%
Projected year underspend / overspend	-£17,584.60	-£526.53	-£7,468.50	-£6,802.32	-£27,848.29	-£34,851.22	£28,225.28	£25,228.05	-£8,980.68

Current overspend **-£50,609**

This covers 11 (of the 11) bank holidays year to date, which includes additional bank holidays which fell over the christmas and new year period

Projected year underspend / overspend based on ytd % variance applied to annual budget. Excludes all events and agreements.

(- = overspend)

Monitoring information for making the most of our resources

Specialist support - 7 OCU

7 OCU	Central	Isle of Wight	North & East	Portsmouth	Southampton	Western	Force
Sept 2010	0	1	0	3	1	1	6
Oct 2010	0	0	0	1	5	4	10
Nov 2010	3	1	1	1	3	4	13
Dec 2010	0	0	2	3	7	0	12
Jan 2011	1	3	0	5	9	2	20
Total	4	5	3	13	25	11	61

Note: Assistance given with interviewing, house search, statement taking and investigatory advice

Specialist support - 8 OCU

Percentage of Grade 1 incidents at which 8 OCU units were On Scene

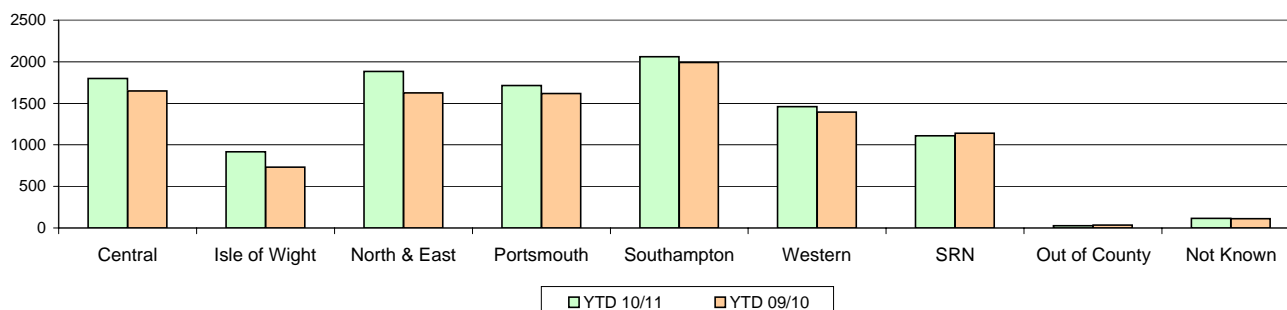
	Central	Isle of Wight	North & East	Portsmouth	Southampton	Western	SRN	Out of County	Not Known	TOTAL
YTD 10/11	32.9%	43.6%	35.0%	33.0%	32.0%	32.4%	76.0%	50.9%	29.9%	35.8%
YTD 09/10	34.7%	47.8%	37.0%	36.0%	36.5%	34.3%	78.1%	64.2%	28.8%	38.7%
% change	-5.0%	-8.7%	-5.4%	-8.4%	-12.3%	-5.4%	-2.7%	-20.6%	3.7%	-7.5%
Feb-11	30.6%	45.2%	32.7%	33.8%	36.7%	29.4%	71.8%	50.0%	33.3%	35.5%
Feb-10	38.0%	41.7%	35.4%	39.5%	39.0%	37.3%	77.9%	60.0%	30.3%	39.7%
% change	-19.5%	8.4%	-7.6%	-14.5%	-5.9%	-21.3%	-7.9%	-16.7%	10.0%	-10.5%

Note: SRN = Strategic Road Network

Total number of Grade 1 Incidents Attended by 8 OCU Units

	Central	Isle of Wight	North & East	Portsmouth	Southampton	Western	SRN	Out of County	Not Known	TOTAL
YTD 10/11	1798	918	1884	1716	2059	1461	1110	27	115	11088
YTD 09/10	1649	732	1625	1619	1992	1396	1139	34	112	10298
% change	9.0%	25.4%	15.9%	6.0%	3.4%	4.7%	-2.5%	-20.6%	2.7%	7.7%
Feb-11	140	57	157	146	197	96	89	4	8	894
Feb-10	166	53	131	153	184	141	74	3	10	915
% change	-15.7%	7.5%	19.8%	-4.6%	7.1%	-31.9%	20.3%	33.3%	-20.0%	-2.3%

Incidents attended - year to date comparison



Monitoring information for making the most of our resources

Overdue PDRs

Year to date - January

	Police Officers			Police Staff			PCSOs		
	Headcount	Overdue PDRs	%	Headcount	Overdue PDRs	%	Headcount	Overdue PDRs	%
Central OCU	597	41	7%	167	23	14%	75	0	0%
Isle of Wight OCU	220	7	3%	73	10	14%	28	2	7%
North and East OCU	558	77	14%	129	18	14%	67	4	6%
Portsmouth OCU	410	44	11%	126	13	10%	49	5	10%
Southampton OCU	492	25	5%	145	13	9%	55	2	4%
Western OCU	521	58	11%	136	8	6%	64	6	9%
Crime OCU	377	32	8%	315	39	12%	0	0	-
Operations OCU	370	19	5%	120	13	11%	0	0	-
Chief Constables portfolio	7	0	0%	3	1	33%	0	0	-
DCCs portfolio	32	4	13%	306	105	34%	0	0	-
ACC Crime and CJ portfolio	11	4	36%	295	87	29%	0	0	-
ACC HR and Ops portfolio	70	18	26%	161	24	15%	0	0	-
ACC TO portfolio	47	12	26%	434	32	7%	0	0	-
Director of Finance portfolio	0	0	-	141	41	29%	0	0	-
Force Total	3712	341	9%	2551	427	17%	338	19	6%

Note: Chief Superintendents and above are counted against the relevant ACPO Portfolio holder rather than their OCU or Dept.

Sickness data

APACS 13.1

Year to date - January

APACS 13.2

	Police Officers			Police Staff			PCSOs		
	Average Headcount	Duty Days Lost	Average days sickness per officer	Average Headcount	Duty Days Lost	Average days sickness per staff member	Average Headcount	Duty Days Lost	Average days sickness per PCSO
Central OCU	606	3917	6.46	170.5	1517	8.90	77.5	483	6.23
Isle of Wight OCU	221.5	2027	9.15	74.5	432	5.80	28	159	5.68
North and East OCU	566.5	3177	5.61	139.0	1476	10.62	67.5	297	4.40
Portsmouth OCU	411	2439	5.93	128.5	715	5.56	49.5	380	7.68
Southampton OCU	494	3231	6.54	151.5	1173	7.74	57	659	11.56
Western OCU	518	3547	6.85	138.5	1233	8.90	65	371	5.71
Crime OCU	388.5	2718	7.00	317.5	1810	5.70	0	0	-
Operations OCU	377	2112	5.60	126.0	719	5.71	0	0	-
Chief Constables portfolio	2.5	0	0.00	2.0	78	39.00	0	0	-
DCCs portfolio	38.5	164	4.26	314.0	1067	3.40	0	0	-
ACC Crime and CJ portfolio	11.5	22	1.91	315.0	1954	6.20	0	0	-
ACC HR and Ops portfolio	65.5	475	7.25	155.0	705	4.55	0	0	-
ACC TO portfolio	43	376	8.74	416.5	4916	11.80	0	0	-
Director of Finance portfolio	0	0	-	146.0	639	4.38	0	0	-
Force Total	3743.50	24205	6.47	2594.50	18434	7.11	344.50	2349	6.82

Monitoring information for equipping our team to deliver

Financial awareness training

Financial awareness training will be undertaken for budget holders with the aim of ensuring a minimum of 95% of budget holders are trained by the end of the financial year.

	Full Year Apr 10 - Mar 11		Year to Date (February 11)	
	Courses Planned	Numbers to be trained	Courses Held	Numbers Trained
Financial Awareness	8	120	3	18

Number of courses currently subject to review

Preparing for frontline supervision

	Full Year Apr 10 - Mar 11		Year to Date (February 11)	
	Courses Planned	Numbers to be trained	Courses Held	Numbers Trained
Sergeants Operational Activities	7	70	6	63
Inspectors Statutory Responsibilities	7	98	4	43
First Line Manager - Leadership Part 1	7	112	6	81
First Line Manager - Leadership Part 2	7	112	7	90
First Line Manager - Action Learning Sets	32	192	11	99