



Performance Summary February 2009

Summary

This document contains a strategic overview of the Constabulary's performance. It has a variety of performance measures within it, but for the first time our performance is aligned to the Force Control Strategy.

It is a headline document that will enable our customers, both internally and externally, to easily assess performance in key domains. Additionally with the introduction of the national performance framework called the Assessment of Police and Community Safety (APACS), it is crucial that we become focused and more accountable.

At the front of the document there are several matrices that reflect our performance against our targets, firstly year to date and secondly relevant for that particular month.

Performance in key areas is then explored in more depth with an indication of where each measure has originated - for example, APACS Statutory Performance Indicator (SPI) or a Force Control Strategy (FCS) measure.

This document is then taken forward by key stakeholders within the organisation to the Force Performance Review Group, where it is used to highlight areas of both best practice and those for development.

This is an evolving document and as such, the content may alter over time and any feedback would be welcomed by the Performance Review Team.

Index

Page

Year to date performance matrix

4-5

Monthly performance matrix

6-7

including notes on matrices terminology

Safer neighbourhoods

| | | | | |
|----|--|---------|-----|---|
| 8 | Overall satisfaction | SPI 1.1 | FCS | Consultation & Research Team |
| 8 | Being kept informed | | FCS | Consultation & Research Team |
| 8 | Comparative satisfaction of minority ethnic groups | SPI 1.2 | | Consultation & Research Team |
| 8 | Satisfaction of victims of racist incidents | SPI 1.3 | | Consultation & Research Team |
| 8 | Confidence in local police | SPI 2.3 | FCS | iQuanta - Quarterly |
| 8 | Understanding community issues | | FCS | iQuanta - Quarterly |
| 8 | Perception of anti-social behaviour | SPI 4.1 | | iQuanta - Quarterly |
| 8 | Perception of drug use in local area | SPI 4.3 | FCS | iQuanta - Quarterly |
| 8 | Perception of drunk or rowdy behaviour | SPI 4.2 | | iQuanta - Quarterly |
| 9 | Assault with less serious injury | SPI 5.3 | FCS | Business Objects |
| 10 | Successful neighbourhood priorities | | FCS | Neighbourhood Policing Lead - ACC 'TO' Dept |
| 10 | Anti-social use of motor vehicle (NSIR) | | FCS | PRT - NSIR Return |
| 10 | Anti-social behaviour (NSIR) | | FCS | PRT - NSIR Return |
| 11 | Criminal damage | | FCS | Business Objects |

Safeguard people

| | | | | |
|----|-------------------------------------|--|-----|-----------------------------|
| 12 | DV incident arrest rate | | FCS | Business Objects |
| 12 | DV victimisation | | FCS | N/A |
| 12 | Repeat victims of domestic violence | | FCS | Business Objects |
| 12 | Domestic violence OBTJ rate | | FCS | Criminal Justice Department |
| 12 | Hate crime detection rate | | FCS | Business Objects |
| 12 | Sexual offender reoffending rate | | FCS | N/A |

Protect our communities

| | | | | |
|----|-------------------------|---------|-----|------------------------|
| 13 | Road traffic casualties | SPI 9.1 | FCS | 8 OCU Performance Team |
|----|-------------------------|---------|-----|------------------------|

Prevent, reduce and detect crime

| | | | | |
|----|---|----------|-----|--------------------------------------|
| 14 | Serious violent crime and sanction detections | SPI 5.1 | FCS | Business Objects |
| 15 | All crime | | FCS | Business Objects |
| 16 | Serious acquisitive crime and sanction detections | SPI 5.2 | FCS | Business Objects |
| 17 | Serious acquisitive crime breakdown | | | |
| 18 | Gun crime rate | SPI 5.5 | | Business Objects and Manual Checking |
| 18 | Knife crime rate | SPI 5.6 | | Business Objects and Manual Checking |
| 18 | Serious sexual crime OBTJ rate | SPI 6.4 | FCS | Criminal Justice Department |
| 18 | Murder offences | | FCS | Business Objects |
| 18 | Asset recovery | SPI 8.1 | FCS | Specialist Investigation Department |
| 18 | PPO convictions | SPI 10.1 | FCS | Criminal Justice Department |
| 18 | Class A drugs sanction detections | | FCS | Business Objects |
| 18 | Drug intervention measures (DIMs) | | | Force Intelligence |

Organisational management

| | | | | |
|----|-------------------------------------|----------|-----|---|
| 19 | Police officer sickness | SPI 13.1 | FCS | PRT - Delphi + Personnel - Staffing Figures |
| 20 | Police staff sickness | SPI 13.2 | FCS | PRT - Delphi + Personnel - Staffing Figures |
| 21 | Overdue PDRs | | | Personnel |
| 22 | Minority ethnic officer recruitment | SPI 3.1 | | Personnel |
| 22 | Female officer representation | SPI 3.2 | | Personnel |
| 22 | NCRS compliance | | FCS | Force Incident & Crime Registrar |
| 22 | Budget spend | | FCS | Finance |
| 22 | Efficiency savings | | FCS | Finance |

Specialist Operations - 7 OCU

| | | | | |
|-------|---|--|--|--|
| 23-24 | Murder & domestic murder offences (SPI 5.4), CSI attendance, DNA & fingerprint identifications, forensic examinations major incidents, class A drug detections, kidnaps, abductions, blackmails | | | |
|-------|---|--|--|--|

Specialist Operations - 8 OCU

| | | | | |
|----|---|--|--|--|
| 25 | Patrol availability, pre-planned operations, ANPR operations, interventions in support of OCUs & Force Strategy | | | |
|----|---|--|--|--|

Operational Services

| | | | | |
|----|--|--|--|--|
| 26 | Performance highlights relating to Operational Services departments which include Call Management and Personnel & Training | | | |
|----|--|--|--|--|

Victim focus

| | | | | |
|-------|---|--|--|--|
| 27-28 | APACs indicators for user satisfaction, Victim Code compliance, victim support status | | | |
|-------|---|--|--|--|

Restricted data

29

FCS = Force Control Strategy

PRT = Performance Review Team

SPI - Statutory Performance Indicator

Year to date performance matrix

This matrix is based on year to date comparison with 2007/2008 performance

| | | Target | Actual | |
|--|---|--------|----------|----------|
| Safer Neighbourhoods | Overall satisfaction (data for rolling 12 months) | >62.0% | 63.0% | |
| | Being kept informed (data for rolling 12 months) | >60.0% | 50.0% | |
| | Confidence in local police | >58.3% | 57.9% | |
| | Understanding community issues | >67.1% | 66.3% | |
| | Perception of drug use in local area | <23.9% | 26.2% | |
| | Assault with less serious injury* | -5.0% | -0.7% | |
| | OCU specific targets | | | |
| | Successful neighbourhood priorities | >33.0% | Pg 10 | |
| | Anti-social use of motor vehicle | -5.0% | -22.0% | |
| | Anti-social behaviour | -5.0% | -6.1% | |
| | Reduce criminal damage | -12.0% | -9.2% | |
| | Safer Neighbourhoods - targets achieved | | | 3 |
| Safeguard people | Domestic violence incident arrest rate | >35.0% | 33.9% | |
| | Repeat victims of domestic violence | -5.0% | 9.8% | |
| | Hate crime detection rate | >45.0% | 40.9% | |
| Safeguard people - targets achieved | | | 0 | |
| Protect our communities | Road traffic casualties | <792 | 754 | |
| | Protect our communities - targets achieved | | 1 | |

| Central | Isle of Wight | North & East | Portsmouth | Southampton | Western | Crime | Operations |
|--|---------------|--------------|------------|-------------|----------|-------|------------|
| 64.0% | 71.0% | 62.0% | 63.0% | 60.0% | 63.0% | N/A | |
| 50.0% | 57.0% | 48.0% | 49.0% | 49.0% | 50.0% | N/A | |
| Force level target - to exceed MSG average by 5% whilst not declining on current performance | | | | | | | |
| Force level target - to exceed MSG average by 3.5% whilst not declining on current performance | | | | | | | |
| Force level target - be under MSG average whilst not declining on current performance | | | | | | | |
| -3.8% | 1.9% | 0.7% | 5.9% | -1.8% | -3.5% | N/A | |
| -5.91% | -4.52% | 0.00% | -4.00% | -8.69% | -4.21% | N/A | |
| Quarterly Data - See Page 10 | | | | | | | N/A |
| -23.6% | -25.9% | -25.4% | -27.0% | -14.8% | -10.9% | N/A | |
| -9.2% | -7.3% | -1.6% | -7.6% | -1.6% | -10.6% | N/A | |
| -9.8% | -15.7% | -4.3% | -4.5% | -10.9% | -11.6% | N/A | |
| 3 | 4 | 2 | 3 | 1 | 3 | | |
| 34.8% | 35.7% | 36.7% | 26.6% | 29.5% | 48.3% | N/A | |
| -7.1% | 13.7% | 28.3% | -8.6% | 27.0% | 21.3% | N/A | |
| 43.0% | 50.0% | 40.3% | 35.1% | 40.7% | 44.4% | N/A | |
| 1 | 2 | 1 | 1 | 0 | 1 | | |
| Owned by Operations OCU | | | | | | | 754 |
| | | | | | | | 1 |

Year to date performance matrix cont'd

This matrix is based on year to date comparison with 2007/2008 performance

| | | Target | Actual |
|--|----------------------------------|----------------------|----------|
| Prevent, reduce and detect crime | Serious violent crime | -6.0% | -4.5% |
| | Serious violent crime SD | >50.0% | 50.6% |
| | All crime* | -3.0% | -3.0% |
| | | OCU specific targets | |
| | Serious acquisitive crime* | -2.0% | -5.3% |
| | | OCU specific targets | |
| | Serious acquisitive crime SD | >15.0% | 10.5% |
| | Murder offences | <15 | 10 |
| | Asset recovery (shown in £1000s) | £3,782.7 | £0.0 |
| Class A drugs SD | >366 | 342 | |
| Prevent, reduce and detect crime - targets achieved | | | 4 |
| Organisational management | Police officer sickness | <6.88 | 7.07 |
| | Police staff sickness | <6.88 | 7.84 |
| | NCRS compliance | Good | N/A |
| | | 90.0% | |
| | Budget spend | <83% | 81% |
| | Efficiency savings | >£10m | £2.44m |
| Organisational management - targets achieved | | | 1 |
| Force Total - targets achieved | | | 9 |

| Central | Isle of Wight | North & East | Portsmouth | Southampton | Western | Crime | Operations |
|-------------------------|---------------|--------------|------------|-------------|---------|---------|--------------------|
| 1.9% | -32.9% | -12.7% | 5.4% | -12.7% | 27.8% | N/A | |
| 56.1% | 72.5% | 56.5% | 39.5% | 46.9% | 50.5% | N/A | |
| -2.1% | -7.9% | -0.7% | -1.8% | -4.9% | -3.3% | N/A | |
| -2.34% | -2.35% | -1.50% | -1.50% | -4.35% | -5.25% | N/A | |
| -2.4% | -8.6% | -3.5% | 6.1% | -10.1% | -12.9% | N/A | |
| -1.39% | -2.11% | -2.38% | -1.36% | -2.27% | -2.48% | N/A | |
| 11.8% | 14.0% | 8.2% | 11.7% | 9.8% | 10.7% | N/A | |
| Owned by Crime OCU | | | | | | 10 | Owned by Crime OCU |
| This is a Force measure | | | | | | | |
| Owned by Crime OCU | | | | | | 342 | Owned by Crime OCU |
| 2 | 4 | 3 | 1 | 3 | 2 | 1 | |
| 6.86 | 6.88 | 5.21 | 8.88 | 7.11 | 8.60 | 5.78 | 7.41 |
| 8.58 | 8.75 | 7.15 | 10.35 | 7.44 | 7.84 | 7.30 | 4.62 |
| Fair | Fair | Fair | Poor | Poor | Fair | No data | N/A |
| 82% | 82% | 84% | 72% | 64% | 85% | No data | |
| 82% | 82% | 85% | 84% | 81% | 81% | 79% | 85% |
| This is a Force measure | | | | | | | |
| 2 | 1 | 1 | 0 | 1 | 1 | 2 | 1 |
| 8 | 11 | 7 | 5 | 5 | 7 | 3 | 2 |

Note: Some areas contained within the Force Control Strategy and Force Target documents do not yet appear in the above matrix. This is because, to date, it has not been possible to establish sufficient baseline data to set a target. Work is ongoing in these areas to establish a baseline. Information in relation to our progress within these areas is contained within the detailed sections of the profile.

Monthly performance matrix

This matrix is based on monthly data compared to force target

| | | Target | Actual | Central | Isle of Wight | North & East | Portsmouth | Southampton | Western | Crime | Operations |
|--|---------------------------------------|----------------------|-----------------------|----------|---------------|--------------|------------|-------------|----------|----------|------------|
| Safer Neighbourhoods | Assault with less serious injury* | <1050 | 1076 | 201 | 76 | 170 | 171 | 280 | 178 | N/A | |
| | | OCU specific targets | | 222.2 | 71.3 | 185.1 | 147.3 | 257.0 | 167.6 | N/A | |
| | Anti-social use of motor vehicle | <1457 | 780 | 173 | 43 | 171 | 82 | 127 | 158 | N/A | |
| | | OCU specific targets | | 312.5 | 97.7 | 278.4 | 143.6 | 260.7 | 288.9 | N/A | |
| | Anti-social behaviour | <8105 | 5970 | 1153 | 418 | 1049 | 982 | 1410 | 841 | N/A | |
| | | OCU specific targets | | 1702.0 | 594.2 | 1391.2 | 1268.4 | 1730.4 | 1288.1 | N/A | |
| Reduce criminal damage | <2626 | 2833 | 588 | 193 | 516 | 341 | 689 | 506 | N/A | | |
| | OCU specific targets | | 574.0 | 206.0 | 473.2 | 327.0 | 560.4 | 485.8 | N/A | | |
| Safer Neighbourhoods - targets achieved | | 2 | | 3 | 3 | 3 | 2 | 2 | 2 | | |
| Safeguard people | Domestic violent incident arrest rate | > 35.0% | 27.1% | 27.2% | 29.9% | 27.5% | 22.7% | 25.9% | 34.8% | N/A | |
| | Hate crime detection rate | >45.0% | 42.7% | 57.1% | 50.0% | 44.8% | 23.5% | 42.9% | 43.8% | N/A | |
| Safeguard people - targets achieved | | 0 | | 1 | 1 | 0 | 0 | 0 | 0 | | |
| Protect our communities - targets achieved | | | | | | | | | | | |
| Prevent, reduce and detect crime | Serious violent crime | <67 | 86 | 10 | 2 | 16 | 33 | 14 | 11 | N/A | |
| | | OCU specific targets | | 11.7 | 6.3 | 11.4 | 13.0 | 19.0 | 6.0 | N/A | |
| | Serious violent crime SD | >50.0% | 55.8% | 60.0% | 150.0% | 37.5% | 39.4% | 92.9% | 63.6% | N/A | |
| | All crime* | <12273 | 12119 | 2553 | 672 | 2263 | 1885 | 2690 | 2056 | N/A | |
| | | OCU specific targets | | 2510.3 | 848.5 | 2304.9 | 1901.2 | 2593.9 | 2114.6 | N/A | |
| | Serious acquisitive crime* | <1717 | 1651 | 333 | 61 | 345 | 313 | 329 | 270 | N/A | |
| | | OCU specific targets | | 303.8 | 72.9 | 335.6 | 281.5 | 381.8 | 340.9 | N/A | |
| | Serious acquisitive crime SD | >15.0% | 14.5% | 9.3% | 14.8% | 7.2% | 24.3% | 16.1% | 16.7% | N/A | |
| Asset recovery | £344,483 | £0 | This is Force measure | | | | | | | | |
| Class A drugs SD | >33 | 36 | Owned by Crime OCU | | | | | | | | |
| Prevent, reduce and detect crime - targets achieved | | 4 | | 2 | 4 | 1 | 2 | 4 | 4 | 1 | |
| Organisational management | Police officer sickness | <0.63 | 0.43 | 0.56 | -0.35 | 0.50 | 0.64 | 0.14 | 0.73 | 0.21 | 0.54 |
| | Police staff sickness | <0.63 | 0.53 | 0.45 | 0.13 | 0.82 | 0.96 | 0.04 | 0.83 | 0.45 | 0.14 |
| Organisational management - targets achieved | | 2 | | 2 | 2 | 1 | 0 | 2 | 0 | 2 | 2 |
| Force Total - targets achieved | | 8 | | 8 | 10 | 5 | 4 | 8 | 6 | 3 | 2 |

Note: Some areas contained within the Force Control Strategy and Force Target documents do not yet appear in the above matrix. This is because, to date, it has not been possible to establish sufficient baseline data to set a target. Work is on going in these areas to establish a baseline. Information in relation to our progress within these areas is contained within the detailed sections of this document.

Notes to be read in conjunction with matrices

| | |
|---|--|
| All citizen focus data | Based on "completely or very satisfied" |
| OBTJ | Offenders Brought To Justice |
| Road traffic casualties | All data until 31 January 2009 |
| Budget spend | Data is always one month in arrears |
| Efficiency savings | 3 year target of £30m, notionally £10m per year |
| SD | Sanction detections |
| Anti-social use of motor vehicle & behaviour | Data is obtained from NSIR and always 1 month in arrears |
| Sickness data | Force Actual = total for ALL officers/police staff - including those not in OCU |
| OCU specific targets | OCU specific targets are rounded to 1 decimal place, the actual figure may therefore seem the same but appear red due to this rounding |
| Asset recovery | Asset recovery is the sum total of the values of cash forfeitures and confiscation orders |
| * = variable targets across OCUs for these target areas based on previous performance and MSG position | |

Safer neighbourhoods

Overall satisfaction

Rolling 12 months data relates to: Mar 08 - Feb 09; rolling 3 months data relates to Dec 08 - Feb 09
Overall satisfaction includes burglary, vehicle crime, violent crime and RTCs

| Target 62% | Central | Isle of Wight | North & East | Portsmouth | Southampton | Western | Force | No. Surveys |
|-------------------|---------|---------------|--------------|------------|-------------|---------|-------|-------------|
| Rolling 12 months | 64% | 71% | 62% | 63% | 60% | 63% | 63% | 7797 |
| Rolling 3 months | 69% | 76% | 64% | 69% | 64% | 64% | 69% | 1745 |

Being kept informed

Rolling 12 months data relates to: Mar 08 - Feb 09; rolling 3 months data relates to Dec 08 - Feb 09
Being kept informed includes burglary, vehicle crime, violent crime and RTCs

| Target 60% | Central | Isle of Wight | North & East | Portsmouth | Southampton | Western | Force | No. Surveys |
|-------------------|---------|---------------|--------------|------------|-------------|---------|-------|-------------|
| Rolling 12 months | 50% | 57% | 48% | 49% | 49% | 50% | 50% | 7565 |
| Rolling 3 months | 60% | 62% | 55% | 56% | 55% | 56% | 57% | 1695 |

Comparative satisfaction of minority ethnic groups

Data relates to interviews which took place Mar 08 - Feb 09
These figures are for overall satisfaction for burglary, vehicle crime, violent crime & RTCs; it excludes racist incidents

| | Completely and very satisfied | Completely, very and fairly satisfied |
|-----------------|-------------------------------|---------------------------------------|
| White | 63.7% | 83.4% |
| Minority Ethnic | 54.3% | 78.8% |

Satisfaction of victims of racist incidents

These figures relate to interviews which took place Jan 08 - Dec 08; these will be updated quarterly
Racist incident overall satisfaction = % completely or very satisfied

| | Central | Isle of Wight | North & East | Portsmouth | Southampton | Western | Force |
|-------------------|---------|---------------|--------------|------------|-------------|---------|-------|
| % | 73% | 40% | 60% | 57% | 56% | 71% | 62% |
| Number of surveys | 26 | 5 | 30 | 28 | 43 | 24 | 156 |

British Crime Survey data

This data is updated by iQuanta approximately every quarter.

| Data up to and including year ending September 2008 | Confidence in local police | | Understanding community issues | | Targets MSG = Most Similar Group | |
|---|----------------------------|------------|--------------------------------|------------|--|--|
| Avon & Somerset | 47.7% | | 63.6% | | Confidence in local police To exceed MSG by 5% whilst maintaining performance | |
| Bedfordshire | 50.9% | | 60.4% | | | |
| Essex | 55.0% | | 64.4% | | | |
| Hampshire | 57.9% | 2nd in MSG | 66.3% | 2nd in MSG | Understanding community issues To exceed MSG by 3.5% whilst maintaining performance | |
| Hertfordshire | 58.6% | | 67.5% | | | |
| Kent | 49.4% | | 59.9% | | | |
| Sussex | 51.9% | | 61.7% | | Perception of drug use To be under MSG whilst maintaining performance | |
| Thames Valley | 54.9% | | 64.7% | | | |
| MSG | 53.3% | | 63.6% | | | |

| Data up to and including year ending September 2008 | Perception of anti-social behaviour | | Perception of drug use | | Perception of drunk or rowdy behaviour | |
|---|-------------------------------------|------------|------------------------|------------|--|------------|
| Avon & Somerset | 13.7% | | 23.4% | | 24.6% | |
| Bedfordshire | 18.7% | | 30.1% | | 22.4% | |
| Essex | 11.8% | | 18.6% | | 22.5% | |
| Hampshire | 19.2% | 8th in MSG | 26.2% | 6th in MSG | 32.6% | 8th in MSG |
| Hertfordshire | 13.8% | | 22.7% | | 26.2% | |
| Kent | 16.3% | | 23.0% | | 25.0% | |
| Sussex | 11.4% | | 20.8% | | 20.3% | |
| Thames Valley | 14.6% | | 26.5% | | 22.5% | |
| MSG | 14.9% | | 23.9% | | 24.5% | |

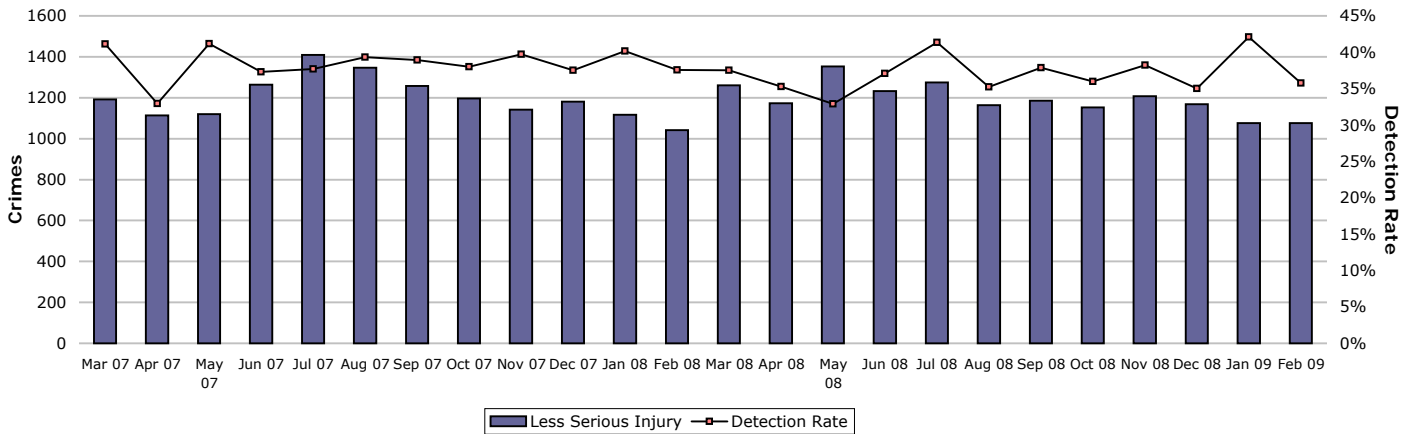
The target for the three areas below is not to decline against previous performance

| | Dec 2007 | Mar 2008 | Jun 2008 | Sep 2008 | Dec 2008 |
|--------------------------------|----------|----------|----------|----------|----------|
| Confidence in local police | 57.4% | 57.4% | 57.9% | 57.9% | |
| Understanding community issues | 64.2% | 65.5% | 66.8% | 66.3% | |
| Perception of drug use | 23.0% | 23.0% | 26.4% | 26.2% | |

Safer neighbourhoods

Assault with less serious injury

Assault with less serious injury consists of crimsec codes 8G and 8J

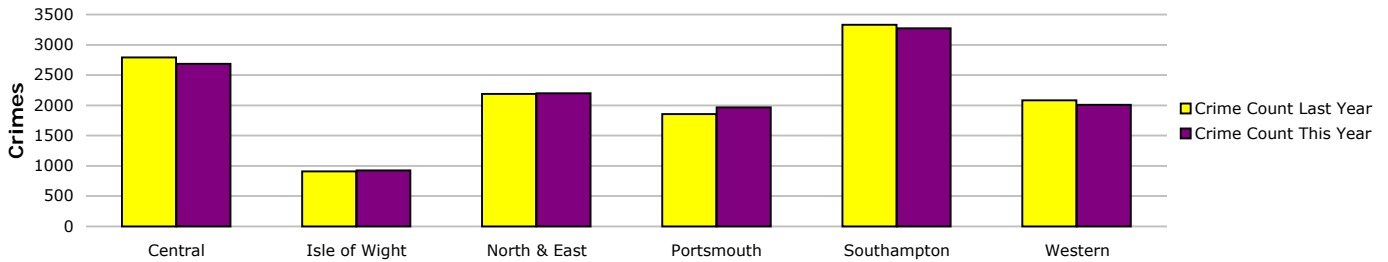


| Crimes | Central | Isle of Wight | North & East | Portsmouth | Southampton | Western | Force |
|-------------------------|-----------------|-----------------|-----------------|---------------|----------------|----------------|---------------|
| YTD Crimes | 2684 | 926 | 2202 | 1966 | 3272 | 2011 | 13061 |
| YTD Target | 2650 | 851 | 2207 | 1757 | 3065 | 1999 | 12529 |
| YTD 07/08 Crimes | 2789 | 909 | 2187 | 1857 | 3331 | 2084 | 13157 |
| This month | 201 | 76 | 170 | 171 | 280 | 178 | 1076 |
| % change from 07/08 | -3.76% | 1.87% | 0.69% | 5.87% | -1.77% | -3.50% | -0.73% |
| MSG position | 14 of 14 | 12 of 15 | 13 of 15 | 6 of 7 | 5 of 13 | 6 of 15 | 8 of 8 |

Note: Two of Portsmouth's MSGs have not updated their data this month reducing the MSG from 9 to 7

Note: Two of Southampton's MSGs have not updated their data this month reducing the MSG from 15 to 13

Note: One of Central's MSGs have not updated their data this month reducing the MSG from 15 to 14



| Detections | Central | Isle of Wight | North & East | Portsmouth | Southampton | Western | Force |
|-----------------------------|-----------------|-----------------|-----------------|---------------|-----------------|----------------|---------------|
| YTD Detection Rate | 34.80% | 41.47% | 37.28% | 30.93% | 36.83% | 43.46% | 36.95% |
| This month | 40.30% | 32.89% | 29.41% | 28.65% | 37.14% | 42.70% | 35.78% |
| YTD 07/08 Detections | 37.54% | 44.88% | 41.66% | 32.79% | 35.42% | 41.31% | 38.12% |
| MSG position | 14 of 14 | 11 of 15 | 11 of 15 | 6 of 7 | 11 of 13 | 7 of 15 | 7 of 8 |

Note: Detections refer to Sanction Detections ONLY

Note: Two of Portsmouth's MSGs have not updated their data this month reducing the MSG from 9 to 7

Note: Two of Southampton's MSGs have not updated their data this month reducing the MSG from 15 to 13

Note: One of Central's MSGs have not updated their data this month reducing the MSG from 15 to 14



Safer neighbourhoods

Successful neighbourhood priorities

Data provided up to Sept 08

| Target = 33% | Central | Isle of Wight | North & East | Portsmouth | Southampton | Western | Force |
|-------------------------------|---------|---------------|--------------|------------|-------------|---------|--------------|
| Number of neighbourhoods | 59 | 20 | 64 | 16 | 22 | 63 | 244 |
| Number of priorities achieved | 13 | 1 | 21 | 2 | 3 | 21 | 61 |
| % of priorities achieved | 22.0% | 5.0% | 32.8% | 12.5% | 13.6% | 33.3% | 25.0% |

This data shows the number of neighbourhood priorities that have, over the last quarter, been successfully achieved. It should be remembered that limited value should be placed on this measure as it does not necessarily reflect community satisfaction with the police activity in support of the priorities. Work is still ongoing to capture this satisfaction level.

Anti-social use of motor vehicle

Data to be provided a month in arrears. It is gathered using Altaris closing codes as the primary data source, then RMS as the secondary data source to gather incidents not recorded within Altaris.

The Force total does not add up to the sum of OCUs, this is due to Altaris incident logs which do not contain a geographic location.

| | Central | Isle of Wight | North & East | Portsmouth | Southampton | Western | Force |
|-----------------------------|---------|---------------|--------------|------------|-------------|---------|----------------|
| YTD Apr 08 to Jan 09 | 2500 | 719 | 2181 | 1083 | 2301 | 2652 | 11861 |
| YTD Apr 07 to Jan 08 | 3271 | 970 | 2924 | 1483 | 2701 | 2976 | 15201 |
| January | 173 | 43 | 171 | 82 | 127 | 158 | 780 |
| YTD Target | 3085.2 | 964.1 | 2748.1 | 1417.7 | 2572.9 | 2852.1 | 14381.2 |
| % v target | -19.0% | -25.4% | -20.6% | -23.6% | -10.6% | -7.0% | -17.5% |
| % change from 07/08 | -23.6% | -25.9% | -25.4% | -27.0% | -14.8% | -10.9% | -22.0% |

Anti-social use of motor vehicle - relates to NSIR category Vehicle Nuisance/Inappropriate Use within the Anti-Social Behaviour Grouping

Anti-social behaviour

Data to be provided a month in arrears. It is gathered using Altaris closing codes as the primary data source, then RMS as the secondary data source to gather incidents not recorded within Altaris.

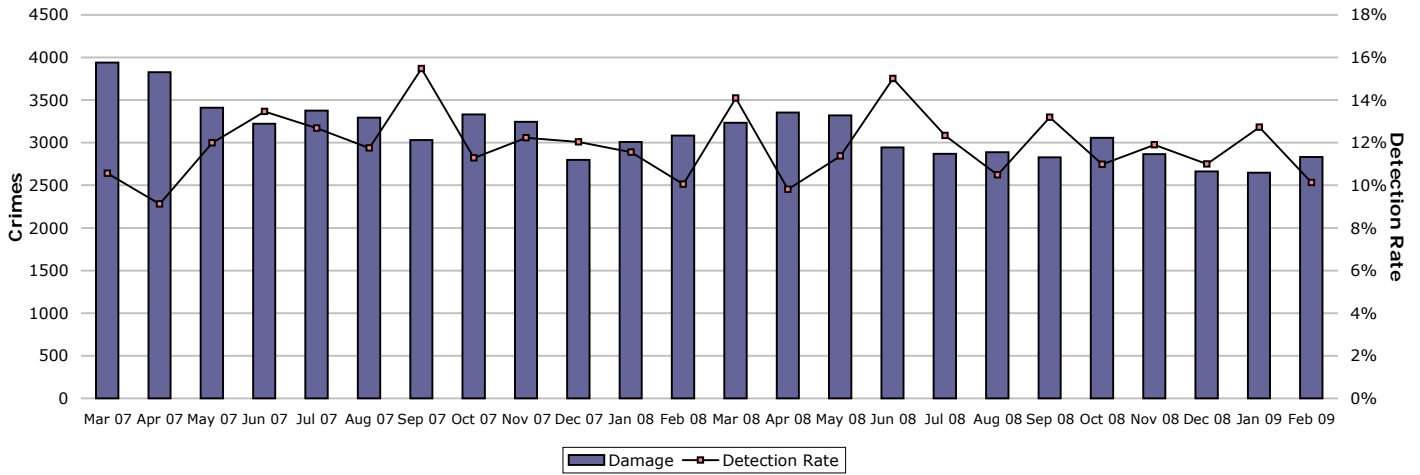
The Force total does not add up to the sum of OCUs, this is due to Altaris incident logs which do not contain a geographic location.

| | Central | Isle of Wight | North & East | Portsmouth | Southampton | Western | Force |
|-----------------------------|---------|---------------|--------------|------------|-------------|---------|----------------|
| YTD Apr 08 to Jan 09 | 16212 | 5815 | 14293 | 12259 | 17912 | 12128 | 79884 |
| YTD Apr 07 to Jan 08 | 17845 | 6274 | 14523 | 13272 | 18207 | 13562 | 85083 |
| January | 1153 | 418 | 1049 | 982 | 1410 | 841 | 5970 |
| YTD Target | 16800.7 | 5865.1 | 13732.3 | 12520.0 | 17080.7 | 12714.5 | 80001.0 |
| % v target | -3.5% | -0.9% | 4.1% | -2.1% | 4.9% | -4.6% | -0.1% |
| % change from 07/08 | -9.2% | -7.3% | -1.6% | -7.6% | -1.6% | -10.6% | -6.1% |

Anti-social behaviour - relates to NSIR categories Environmental Damage/Littering, Rowdy & Inconsiderate and Neighbours within the Anti-Social Behaviour Grouping

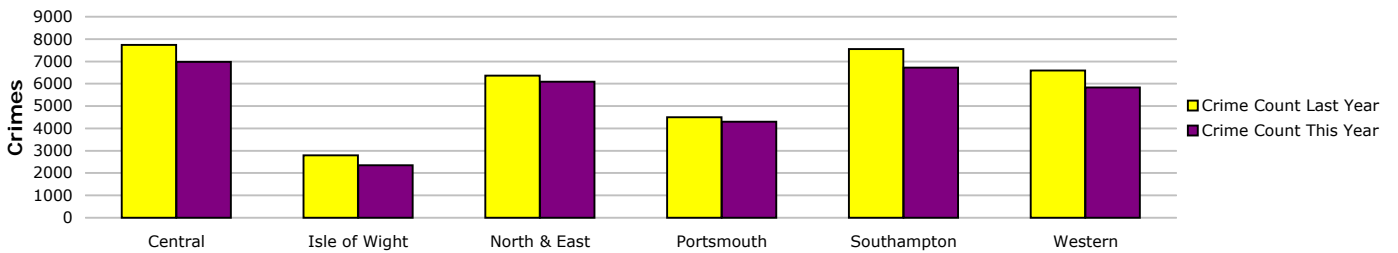
Safer neighbourhoods

Criminal damage



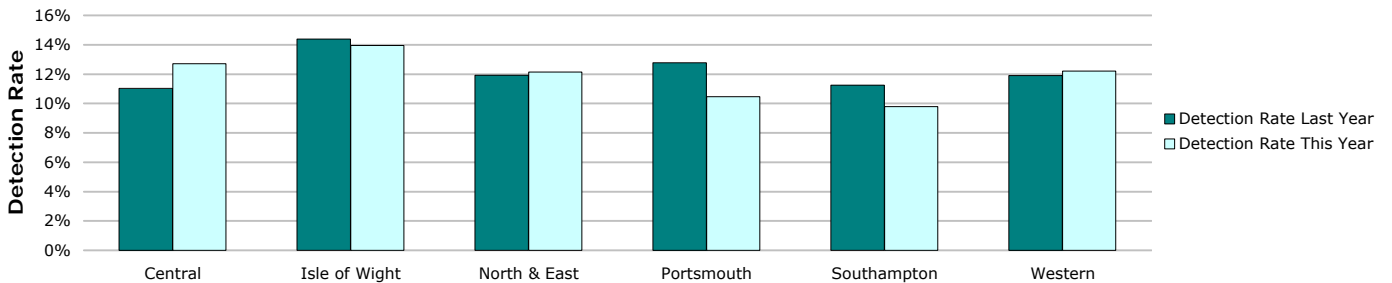
| Crimes | Central | Isle of Wight | North & East | Portsmouth | Southampton | Western | Force |
|-------------------------|----------|---------------|--------------|------------|-------------|---------|--------|
| YTD Crimes | 6982 | 2351 | 6097 | 4295 | 6726 | 5826 | 32277 |
| YTD Target | 6847 | 2458 | 5643 | 3901 | 6684 | 5795 | 31328 |
| YTD 07/08 Crimes | 7742 | 2788 | 6370 | 4498 | 7553 | 6589 | 35540 |
| This month | 588 | 193 | 516 | 341 | 689 | 506 | 2833 |
| % change from 07/08 | -9.82% | -15.67% | -4.29% | -4.51% | -10.95% | -11.58% | -9.18% |
| MSG position | 14 of 14 | 8 of 15 | 13 of 15 | 5 of 7 | 13 of 13 | 7 of 15 | 8 of 8 |

Note: Two of Portsmouth's MSGs have not updated their data this month reducing the MSG from 9 to 7
 Note: Two of Southampton's MSGs have not updated their data this month reducing the MSG from 15 to 13
 Note: One of Central's MSGs have not updated their data this month reducing the MSG from 15 to 14



| Detections | Central | Isle of Wight | North & East | Portsmouth | Southampton | Western | Force |
|-----------------------------|----------|---------------|--------------|------------|-------------|----------|--------|
| YTD Detection Rate | 12.70% | 13.95% | 12.14% | 10.45% | 9.78% | 12.20% | 11.69% |
| This month | 11.39% | 7.77% | 11.82% | 13.20% | 7.40% | 9.49% | 10.13% |
| YTD 07/08 Detections | 11.03% | 14.38% | 11.93% | 12.78% | 11.24% | 11.90% | 11.88% |
| MSG position | 10 of 14 | 10 of 15 | 13 of 15 | 6 of 7 | 12 of 13 | 11 of 15 | 8 of 8 |

Note: Detections refer to Sanction Detections ONLY
 Note: Two of Portsmouth's MSGs have not updated their data this month reducing the MSG from 9 to 7
 Note: Two of Southampton's MSGs have not updated their data this month reducing the MSG from 15 to 13
 Note: One of Central's MSGs have not updated their data this month reducing the MSG from 15 to 14



Safeguard people

Domestic violence (and abuse) is defined by ACPO as: 'any incidence of threatening behaviour, violence or abuse (psychological, physical, sexual, financial or emotional) between adults, aged 18 and over, who are or have been intimate partners or family members, regardless of gender or sexuality'

Domestic violence (and abuse) incident arrest rate

Domestic violence arrest rate is based on records where the occurrence has been flagged as a domestic, and has an arrest event or a linked person reason of arrested. This measure looks at all domestic incidents (not only crimes)

Target >35%

| Year to Date | Central | Isle of Wight | North & East | Portsmouth | Southampton | Western | Force |
|-------------------------------|---------|---------------|--------------|------------|-------------|---------|--------|
| Domestic Incidents | 4390 | 1469 | 3322 | 3641 | 4527 | 2201 | 19550 |
| Domestic Incident Arrests | 1527 | 524 | 1218 | 967 | 1336 | 1063 | 6635 |
| Domestic Incident Arrest Rate | 34.78% | 35.67% | 36.66% | 26.56% | 29.51% | 48.30% | 33.94% |

| Month | Central | Isle of Wight | North & East | Portsmouth | Southampton | Western | Force |
|-------------------------------|---------|---------------|--------------|------------|-------------|---------|--------|
| Domestic Incidents | 316 | 107 | 255 | 295 | 394 | 181 | 1548 |
| Domestic Incident Arrests | 86 | 32 | 70 | 67 | 102 | 63 | 420 |
| Domestic Incident Arrest Rate | 27.22% | 29.91% | 27.45% | 22.71% | 25.89% | 34.81% | 27.13% |

Domestic violence (and abuse) crime arrest rate

| Year to Date | Central | Isle of Wight | North & East | Portsmouth | Southampton | Western | Force |
|----------------------------|---------|---------------|--------------|------------|-------------|---------|--------|
| Domestic Crimes | 1904 | 598 | 1410 | 1170 | 1717 | 1242 | 8041 |
| Domestic Crime Arrests | 1410 | 465 | 1134 | 897 | 1204 | 997 | 6107 |
| Domestic Crime Arrest Rate | 74.05% | 77.76% | 80.43% | 76.67% | 70.12% | 80.27% | 75.95% |

| Month | Central | Isle of Wight | North & East | Portsmouth | Southampton | Western | Force |
|----------------------------|---------|---------------|--------------|------------|-------------|---------|--------|
| Domestic Crimes | 144 | 41 | 101 | 90 | 153 | 105 | 634 |
| Domestic Crime Arrests | 87 | 30 | 72 | 64 | 92 | 60 | 405 |
| Domestic Crime Arrest Rate | 60.42% | 73.17% | 71.29% | 71.11% | 60.13% | 57.14% | 63.88% |

Domestic violence (and abuse) victimisation

Placeholder - this measure was a joint APACS & National Indicator set measure looking at the work of MARACS. It was dropped from the 2008/09 APACS guidance, however is expected to be included in the 09/10 guidance, at which time technical guidance will be published to enable reporting

Repeat victims of domestic violence (and abuse)

| | Central | Isle of Wight | North & East | Portsmouth | Southampton | Western | Force |
|---------------------------------|---------|---------------|--------------|------------|-------------|---------|-------|
| YTD All Domestic Violence | 4390 | 1469 | 3322 | 3641 | 4527 | 2201 | 19550 |
| YTD 07/08 All Domestic Violence | 3916 | 1328 | 2743 | 3566 | 4022 | 2335 | 17910 |
| YTD Repeat Victims | 1776 | 632 | 1022 | 1952 | 1892 | 830 | 8104 |
| YTD 07/08 Repeat Victims | 1600 | 530 | 793 | 1800 | 1132 | 795 | 6650 |
| YTD % Repeat Victims | 40.5% | 43.0% | 30.8% | 53.6% | 41.8% | 37.7% | 41.5% |
| YTD 07/08% Repeat Victims | 40.9% | 39.9% | 28.9% | 50.5% | 28.1% | 34.0% | 37.1% |

Crimes - Target -5% in repeat victims

| | Central | Isle of Wight | North & East | Portsmouth | Southampton | Western | Force |
|---------------------------------------|---------|---------------|--------------|------------|-------------|---------|-------|
| YTD All Domestic Violence | 1904 | 598 | 1410 | 1170 | 1717 | 1242 | 8041 |
| YTD 07/08 All Domestic Violence | 1864 | 573 | 1268 | 1240 | 1610 | 1174 | 7729 |
| YTD Repeat Victims | 446 | 141 | 317 | 329 | 512 | 279 | 2024 |
| YTD 07/08 Repeat Victims | 480 | 124 | 247 | 360 | 403 | 230 | 1844 |
| YTD % Repeat Victims | 23.4% | 23.6% | 22.5% | 28.1% | 29.8% | 22.5% | 25.2% |
| YTD 07/08% Repeat Victims | 25.8% | 21.6% | 19.5% | 29.0% | 25.0% | 19.6% | 23.9% |
| % change in repeat victims from 07/08 | -7.1% | 13.7% | 28.3% | -8.6% | 27.0% | 21.3% | 9.8% |

Note: Crimes are a subset of the incident data. This data reflects ALL crime types, and is not restricted to 'violent' offences

Crimes - This month

| | Central | Isle of Wight | North & East | Portsmouth | Southampton | Western | Force |
|----------------------------------|---------|---------------|--------------|------------|-------------|---------|-------|
| This month All Domestic Violence | 144 | 41 | 101 | 90 | 153 | 105 | 634 |
| This month Repeat Victims | 23 | 9 | 24 | 28 | 36 | 24 | 144 |
| This month % Repeat Victims | 16.0% | 22.0% | 23.8% | 31.1% | 23.5% | 22.9% | 22.7% |

Domestic violence (DV) OBTJ rate

The Tier 3 "other offences" measure includes the DV OBTJ rate which currently cannot be individually extracted. The table below shows the percentage of persons brought to justice for "other offences" including domestic violence incidents against the total number of DV incidents.

| OBTJ Crime category | Jun 2008 | Jul 2008 | Aug 2008 | Sep 2008 | Oct 2008 | Nov 2008 | Rolling average |
|------------------------|----------|----------|----------|----------|----------|----------|-----------------|
| Tier 3: Other Offences | 26% | 32% | 26% | 28% | 20% | 26% | 28% |

Hate crime detection rate

Target >45%

| Year to Date | Central | Isle of Wight | North & East | Portsmouth | Southampton | Western | Force |
|----------------|---------|---------------|--------------|------------|-------------|---------|--------|
| Incidents | 243 | 64 | 259 | 334 | 584 | 224 | 1708 |
| Crimes | 186 | 60 | 231 | 245 | 427 | 205 | 1354 |
| Detections | 80 | 30 | 93 | 86 | 174 | 91 | 554 |
| Detection Rate | 43.01% | 50.00% | 40.26% | 35.10% | 40.75% | 44.39% | 40.92% |

| Month | Central | Isle of Wight | North & East | Portsmouth | Southampton | Western | Force |
|----------------|---------|---------------|--------------|------------|-------------|---------|--------|
| Incidents | 15 | 6 | 29 | 20 | 37 | 19 | 126 |
| Crimes | 14 | 6 | 29 | 17 | 28 | 16 | 110 |
| Detections | 8 | 3 | 13 | 4 | 12 | 7 | 47 |
| Detection Rate | 57.14% | 50.00% | 44.83% | 23.53% | 42.86% | 43.75% | 42.73% |

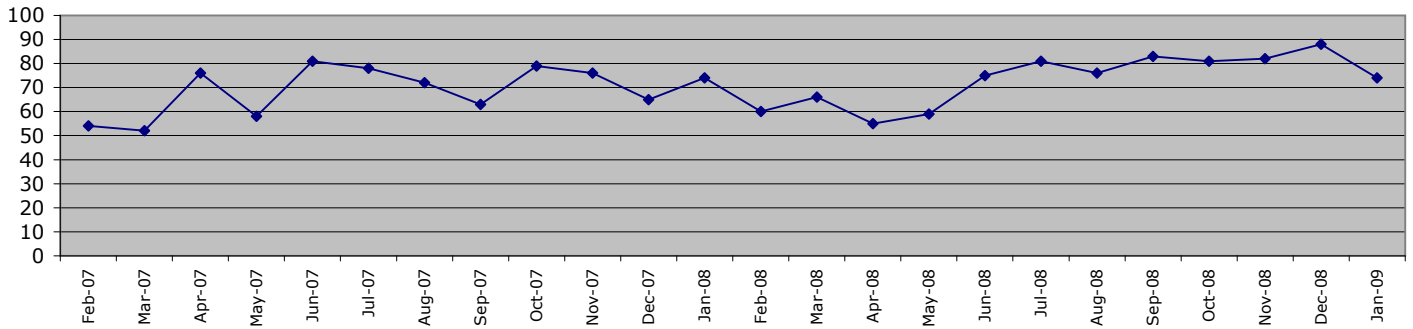
Sexual offender reoffending rate

This indicator was contained within the draft APACS/National Indicator Set measures, however following national consultation this was removed from both sets. Hampshire has not yet identified how this target will be measured in the absence of technical guidance.

Protect our communities

Road traffic casualties

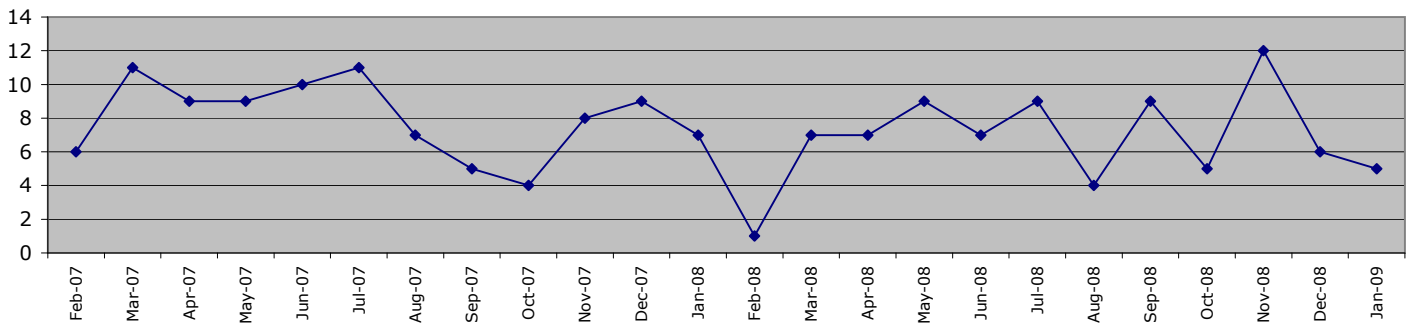
Fatal/serious injury casualties - all victims



The Force target 2008/2009 is for less than 938 casualties, which equates to less than 792 in 306 days YTD Jan 2009 = 754 casualties

| | Central | Isle of Wight | North&East | Portsmouth | Southampton | Western | Force |
|--------------------------------|---------|---------------|------------|------------|-------------|---------|------------|
| 1 April 2008 - 31 January 2009 | 155 | 76 | 167 | 89 | 74 | 193 | 754 |
| of these, fatals were | 11 | 8 | 11 | 7 | 5 | 19 | 61 |
| 1 April 2007 - 31 January 2008 | 183 | 61 | 168 | 60 | 61 | 189 | 722 |

Fatal/serious injury casualties - victims under 16 years



The DETR target is for a 50% reduction in child casualties by 2010 from 164 to 82 (Target 2008/2009 = 94)

| | Central | Isle of Wight | North&East | Portsmouth | Southampton | Western | Force |
|--------------------------------|---------|---------------|------------|------------|-------------|---------|-----------|
| 1 April 2008 - 31 January 2009 | 14 | 10 | 19 | 8 | 10 | 12 | 73 |
| of these, fatals were | 0 | 0 | 0 | 0 | 0 | 2 | 2 |
| 1 April 2007 - 31 January 2008 | 17 | 6 | 15 | 18 | 7 | 16 | 79 |

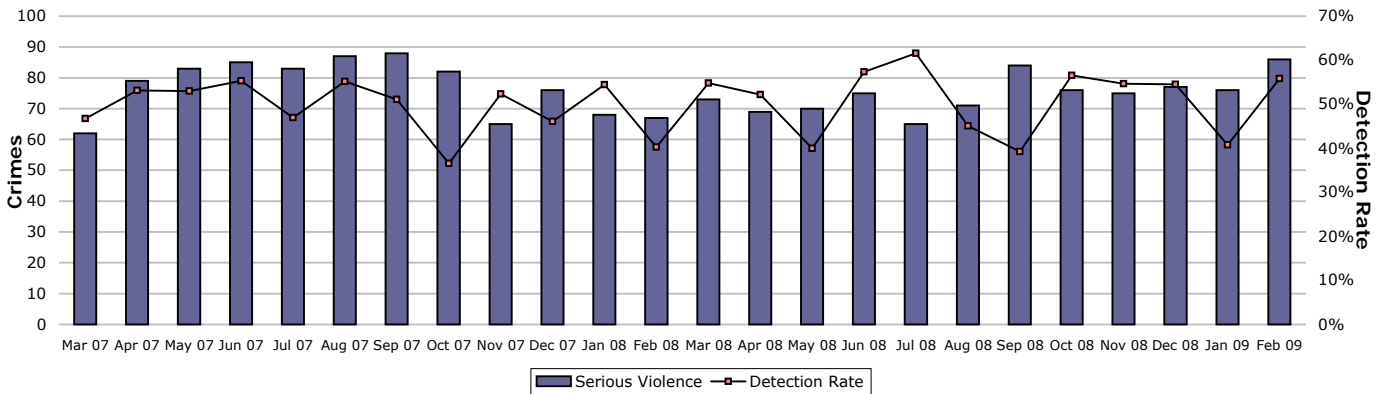
Note: YTD numbers may change as the accident record data are updated each month

Note: The casualties in East Hampshire have all been attributed to North & East OCU in the absence of a breakdown by OCUs

Prevent, reduce and detect crime

Serious violent crime

Serious violent crime consists of crimsec codes 1, 2, 4.1-4.4, 4.6, 4.8, 5A, 5B, 5C, 8F, 8H and 37.1

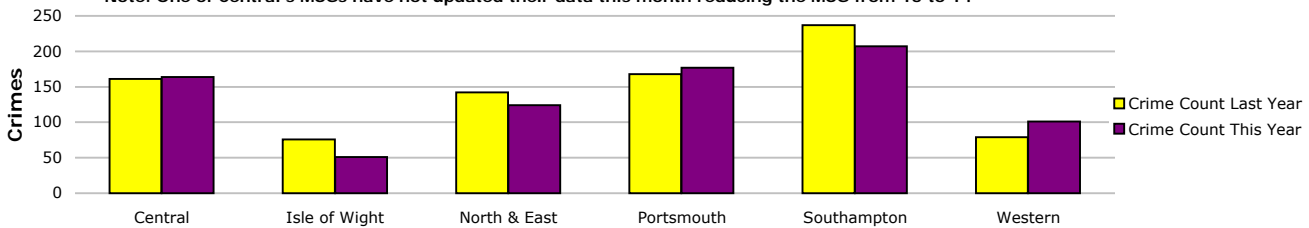


| Crimes | Central | Isle of Wight | North & East | Portsmouth | Southampton | Western | Force |
|---------------------|----------|---------------|--------------|------------|-------------|---------|--------|
| YTD Crimes | 164 | 51 | 124 | 177 | 207 | 101 | 824 |
| YTD Target | 140 | 75 | 134 | 154 | 227 | 71 | 801 |
| YTD 07/08 Crimes | 161 | 76 | 142 | 168 | 237 | 79 | 863 |
| This month | 10 | 2 | 16 | 33 | 14 | 11 | 86 |
| % change from 07/08 | 1.86% | -32.89% | -12.68% | 5.36% | -12.66% | 27.85% | -4.52% |
| MSG position | 10 of 14 | 5 of 15 | 13 of 15 | 6 of 7 | 6 of 13 | 6 of 15 | 7 of 8 |

Note: Two of Portsmouth's MSGs have not updated their data this month reducing the MSG from 9 to 7

Note: Two of Southampton's MSGs have not updated their data this month reducing the MSG from 15 to 13

Note: One of Central's MSGs have not updated their data this month reducing the MSG from 15 to 14



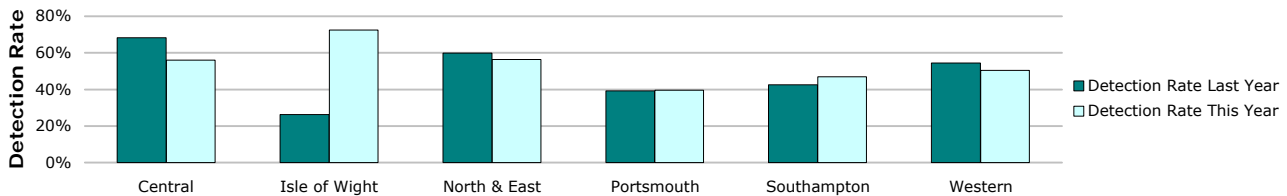
| Detections | Central | Isle of Wight | North & East | Portsmouth | Southampton | Western | Force |
|----------------------|---------|---------------|--------------|------------|-------------|----------|--------|
| Target >50% | | | | | | | |
| YTD Detection Rate | 56.10% | 72.55% | 56.45% | 39.55% | 46.86% | 50.50% | 50.61% |
| This month | 60.00% | 150.00% | 37.50% | 39.39% | 92.86% | 63.64% | 55.81% |
| YTD 07/08 Detections | 68.32% | 26.32% | 59.86% | 39.29% | 42.62% | 54.43% | 49.25% |
| MSG position | 4 of 14 | 1 of 15 | 4 of 15 | 5 of 7 | 7 of 13 | 10 of 15 | 1 of 8 |

Note: Detections refer to Sanction Detections ONLY

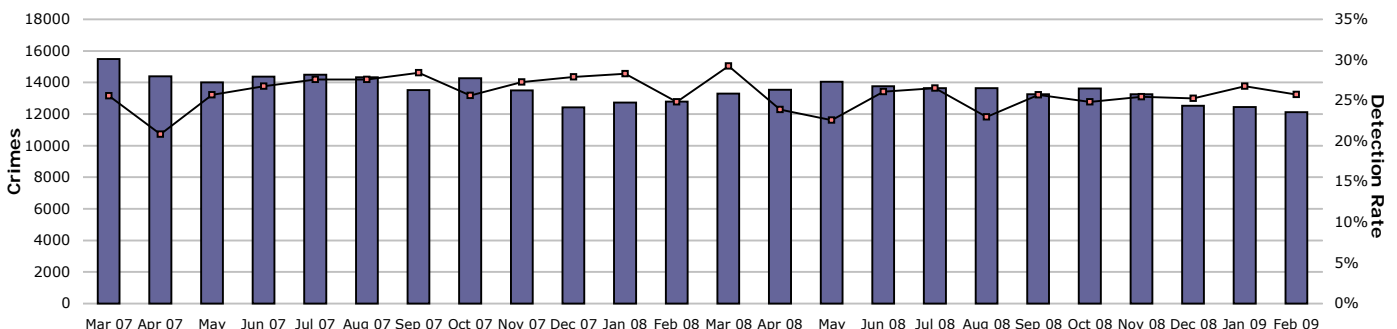
Note: Two of Portsmouth's MSGs have not updated their data this month reducing the MSG from 9 to 7

Note: Two of Southampton's MSGs have not updated their data this month reducing the MSG from 15 to 13

Note: One of Central's MSGs have not updated their data this month reducing the MSG from 15 to 14



All crime



Note: MSG data is a month in arrears. MSG positions in this profile relate to the position the Force/OCU were a month ago

Prevent, reduce and detect crime

Mar 07 Apr 07 May 07 Jun 07 Jul 07 Aug 07 Sep 07 Oct 07 Nov 07 Dec 07 Jan 08 Feb 08 Mar 08 Apr 08 May 08 Jun 08 Jul 08 Aug 08 Sep 08 Oct 08 Nov 08 Dec 08 Jan 09 Feb 09

■ Total Crime — Detection Rate

| Crimes | Central | Isle of Wight | North & East | Portsmouth | Southampton | Western | Force |
|-------------------------|----------|---------------|--------------|------------|-------------|---------|--------|
| YTD Crimes | 29736 | 9526 | 27633 | 22732 | 30536 | 25712 | 145875 |
| YTD Target | 29944 | 10121 | 27493 | 22678 | 30941 | 25224 | 146401 |
| YTD 07/08 Crimes | 30381 | 10338 | 27838 | 23157 | 32117 | 26601 | 150432 |
| This month | 2553 | 672 | 2263 | 1885 | 2690 | 2056 | 12119 |
| % change from 07/08 | -2.12% | -7.85% | -0.74% | -1.84% | -4.92% | -3.34% | -3.03% |
| MSG position | 11 of 14 | 7 of 15 | 10 of 15 | 5 of 7 | 12 of 13 | 8 of 15 | 6 of 8 |

Note: Two of Portsmouth's MSGs have not updated their data this month reducing the MSG from 9 to 7

Note: Two of Southampton's MSGs have not updated their data this month reducing the MSG from 15 to 13

Note: One of Central's MSGs have not updated their data this month reducing the MSG from 15 to 14



Detections

| Target >25% | Central | Isle of Wight | North & East | Portsmouth | Southampton | Western | Force |
|-----------------------------|----------|---------------|--------------|------------|-------------|----------|--------|
| YTD Detection Rate | 24.08% | 32.64% | 25.76% | 25.40% | 23.86% | 23.65% | 25.04% |
| This month | 24.40% | 29.91% | 24.83% | 29.34% | 24.46% | 25.39% | 25.74% |
| YTD 07/08 Detections | 24.81% | 31.77% | 27.50% | 27.63% | 26.37% | 23.65% | 26.35% |
| MSG position | 11 of 14 | 5 of 15 | 11 of 15 | 4 of 7 | 9 of 13 | 15 of 15 | 7 of 8 |

Note: Detections refer to Sanction Detections ONLY

Note: Two of Portsmouth's MSGs have not updated their data this month reducing the MSG from 9 to 7

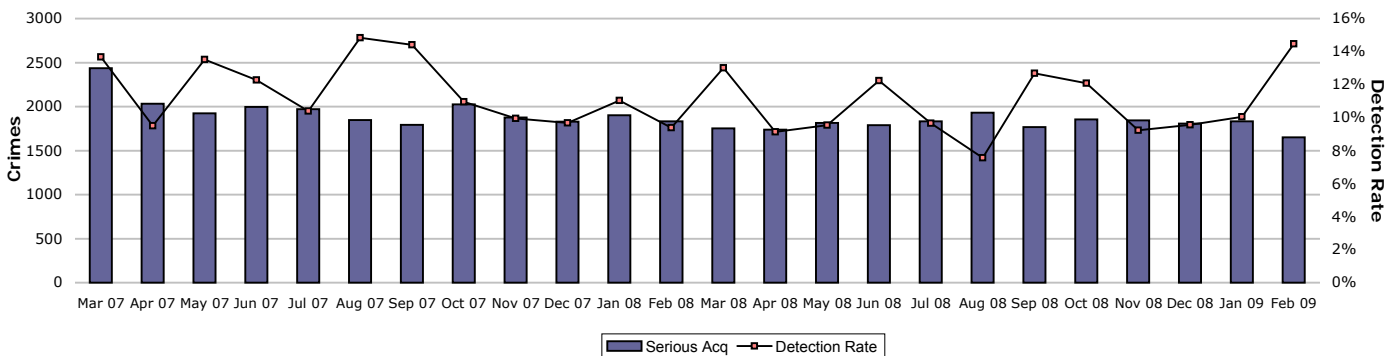
Note: Two of Southampton's MSGs have not updated their data this month reducing the MSG from 15 to 13

Note: One of Central's MSGs have not updated their data this month reducing the MSG from 15 to 14



Serious acquisitive crime

Serious acquisitive crime consists of crimsec codes 28, 29, 34A, 34B, 37/2, 45 and 48



| Crimes | Central | Isle of Wight | North & East | Portsmouth | Southampton | Western | Force |
|-------------------------|---------|---------------|--------------|------------|-------------|---------|--------|
| YTD Crimes | 3585 | 824 | 3917 | 3663 | 4189 | 3683 | 19861 |
| YTD Target | 3623 | 869 | 4002 | 3358 | 4554 | 4066 | 20473 |
| YTD 07/08 Crimes | 3672 | 902 | 4058 | 3451 | 4658 | 4227 | 20968 |
| This month | 333 | 61 | 345 | 313 | 329 | 270 | 1651 |
| % change from 07/08 | -2.37% | -8.65% | -3.47% | 6.14% | -10.07% | -12.87% | -5.28% |
| MSG position | 4 of 14 | 4 of 15 | 6 of 15 | 5 of 7 | 3 of 13 | 5 of 15 | 2 of 8 |

Note: Two of Portsmouth's MSGs have not updated their data this month reducing the MSG from 9 to 7

Note: Two of Southampton's MSGs have not updated their data this month reducing the MSG from 15 to 13

Note: One of Central's MSGs have not updated their data this month reducing the MSG from 15 to 14

Prevent, reduce and detect crime



Detections

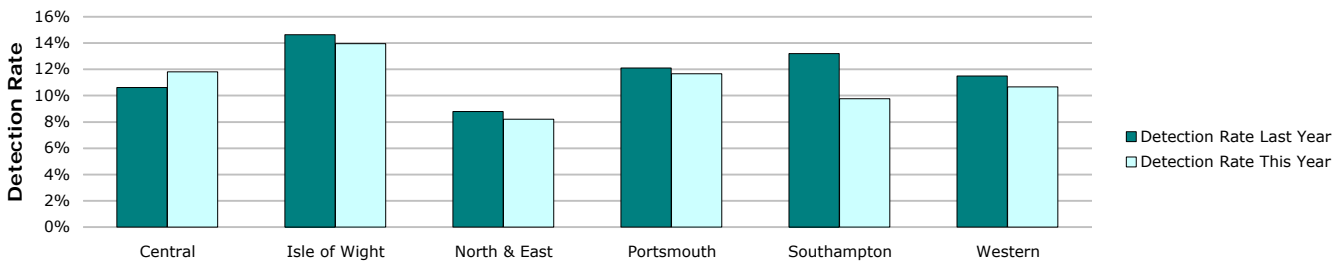
| Target >15% | Central | Isle of Wight | North & East | Portsmouth | Southampton | Western | Force |
|----------------------|---------|---------------|--------------|------------|-------------|----------|--------|
| YTD Detection Rate | 11.80% | 13.96% | 8.20% | 11.66% | 9.76% | 10.67% | 10.51% |
| This month | 9.31% | 14.75% | 7.25% | 24.28% | 16.11% | 16.67% | 14.48% |
| YTD 07/08 Detections | 10.62% | 14.63% | 8.80% | 12.11% | 13.20% | 11.50% | 11.44% |
| MSG position | 9 of 14 | 8 of 15 | 12 of 15 | 3 of 7 | 11 of 13 | 10 of 15 | 7 of 8 |

Note: Detections refer to Sanction Detections ONLY

Note: Two of Portsmouth's MSGs have not updated their data this month reducing the MSG from 9 to 7

Note: Two of Southampton's MSGs have not updated their data this month reducing the MSG from 15 to 13

Note: One of Central's MSGs have not updated their data this month reducing the MSG from 15 to 14



Serious acquisitive crime breakdown

Robbery

| Year to date | Central | Isle of Wight | North & East | Portsmouth | Southampton | Western | Force |
|---------------------|---------|---------------|--------------|------------|-------------|---------|-------|
| Crimes | 103 | 18 | 160 | 217 | 387 | 160 | 1045 |
| Trigger point | 124 | 45 | 134 | 205 | 314 | 137 | 957 |
| 07/08 crimes | 121 | 37 | 143 | 209 | 320 | 132 | 962 |
| % change from 07/08 | -14.88% | -51.35% | 11.89% | 3.83% | 20.94% | 21.21% | 8.63% |

| | | | | | | | |
|----------------|--------|--------|--------|--------|--------|--------|--------|
| Detection rate | 31.07% | 22.22% | 17.50% | 11.52% | 16.28% | 30.63% | 19.23% |
|----------------|--------|--------|--------|--------|--------|--------|--------|

| February 2009 | Central | Isle of Wight | North & East | Portsmouth | Southampton | Western | Force |
|----------------|---------|---------------|--------------|------------|-------------|---------|--------|
| Crimes | 8 | 3 | 20 | 27 | 32 | 10 | 100 |
| Detection rate | 25.00% | 33.33% | 10.00% | 25.93% | 21.88% | 10.00% | 20.00% |

Dwelling burglary

| Year to date | Central | Isle of Wight | North & East | Portsmouth | Southampton | Western | Force |
|---------------------|---------|---------------|--------------|------------|-------------|---------|--------|
| Crimes | 977 | 267 | 1238 | 1305 | 844 | 901 | 5532 |
| Trigger point | 863 | 248 | 963 | 916 | 887 | 823 | 4702 |
| 07/08 crimes | 885 | 270 | 967 | 935 | 926 | 881 | 4864 |
| % change from 07/08 | 10.40% | -1.11% | 28.02% | 39.57% | -8.86% | 2.27% | 13.73% |

| | | | | | | | |
|----------------|--------|--------|--------|--------|--------|--------|--------|
| Detection rate | 19.45% | 23.97% | 11.87% | 16.78% | 19.19% | 18.42% | 17.14% |
|----------------|--------|--------|--------|--------|--------|--------|--------|

| February 2009 | Central | Isle of Wight | North & East | Portsmouth | Southampton | Western | Force |
|----------------|---------|---------------|--------------|------------|-------------|---------|--------|
| Crimes | 88 | 12 | 88 | 87 | 76 | 87 | 438 |
| Detection rate | 18.18% | 33.33% | 7.95% | 71.26% | 27.63% | 26.44% | 30.37% |

Vehicle crime

| Year to date | Central | Isle of Wight | North & East | Portsmouth | Southampton | Western | Force |
|---------------|---------|---------------|--------------|------------|-------------|---------|-------|
| Crimes | 2505 | 539 | 2519 | 2141 | 2958 | 2622 | 13284 |
| Trigger point | 2636 | 576 | 2903 | 2236 | 3353 | 3105 | 14809 |

Prevent, reduce and detect crime

| | | | | | | | |
|---------------------|--------|--------|---------|--------|---------|---------|----------------|
| 07/08 crimes | 2666 | 595 | 2948 | 2307 | 3412 | 3214 | 15142 |
| % change from 07/08 | -6.04% | -9.41% | -14.55% | -7.20% | -13.31% | -18.42% | -12.27% |

| | | | | | | | |
|----------------|-------|-------|-------|-------|-------|-------|--------------|
| Detection rate | 8.02% | 8.72% | 5.80% | 8.55% | 6.22% | 6.79% | 7.07% |
|----------------|-------|-------|-------|-------|-------|-------|--------------|

| February 2009 | Central | Isle of Wight | North & East | Portsmouth | Southampton | Western | Force |
|----------------|---------|---------------|--------------|------------|-------------|---------|--------------|
| Crimes | 237 | 46 | 237 | 199 | 221 | 173 | 1113 |
| Detection rate | 5.49% | 8.70% | 6.75% | 3.52% | 11.31% | 12.14% | 7.73% |

Theft of a motor vehicle

| Year to date | Central | Isle of Wight | North & East | Portsmouth | Southampton | Western | Force |
|----------------|---------|---------------|--------------|------------|-------------|---------|---------------|
| Crimes | 544 | 115 | 692 | 473 | 667 | 522 | 3013 |
| Detection rate | 19.49% | 24.35% | 12.14% | 24.31% | 15.14% | 18.01% | 17.52% |

| February 2009 | Central | Isle of Wight | North & East | Portsmouth | Southampton | Western | Force |
|----------------|---------|---------------|--------------|------------|-------------|---------|---------------|
| Crimes | 54 | 8 | 80 | 26 | 57 | 37 | 262 |
| Detection rate | 7.41% | 12.50% | 13.75% | 15.38% | 10.53% | 27.03% | 13.74% |

Theft from a motor vehicle

| Year to date | Central | Isle of Wight | North & East | Portsmouth | Southampton | Western | Force |
|----------------|---------|---------------|--------------|------------|-------------|---------|--------------|
| Crimes | 1961 | 424 | 1827 | 1668 | 2291 | 2100 | 10271 |
| Detection rate | 4.84% | 4.48% | 3.39% | 4.08% | 3.62% | 4.00% | 4.00% |

| February 2009 | Central | Isle of Wight | North & East | Portsmouth | Southampton | Western | Force |
|----------------|---------|---------------|--------------|------------|-------------|---------|--------------|
| Crimes | 183 | 38 | 157 | 173 | 164 | 136 | 851 |
| Detection rate | 4.92% | 7.89% | 3.18% | 1.73% | 11.59% | 8.09% | 5.88% |

Robbery, burglary and vehicle crime are the component parts of serious acquisitive crime. These individual crime types do not have targets. Trigger points are included here; these add up to the serious acquisitive target and are calculated based on the breakdown of these crimes in 07/08.

Gun crime rate

| | Central | Isle of Wight | North & East | Portsmouth | Southampton | Western | Force |
|---------------------|---------|---------------|--------------|------------|-------------|---------|-------------|
| YTD February 2009 | 26 | 3 | 31 | 16 | 22 | 15 | 113 |
| YTD February 2008 | 22 | 9 | 26 | 14 | 19 | 18 | 108 |
| % change from 07/08 | 18.2% | -66.7% | 19.2% | 14.3% | 15.8% | -16.7% | 4.6% |

Gun crime figures published reflect the APACS technical definition for 2008/09 which differs from that used in 2007/08. Manual checking has been undertaken to try to provide comparative 2007/08 figures, however it is not possible to provide completed comparable figures. In 2008/09 gun crime includes "where the victim is convinced of the presence of a firearm, even if it is concealed and there is evidence of the suspect's intention to create this impression"; these occurrences were not included in previously published 2007/08 data.

Knife crime rate

| | Central | Isle of Wight | North & East | Portsmouth | Southampton | Western | Force |
|---------------------|---------|---------------|--------------|------------|-------------|---------|---------------|
| YTD February 2009 | 129 | 31 | 124 | 109 | 198 | 72 | 663 |
| YTD February 2008 | 131 | 37 | 129 | 163 | 189 | 88 | 737 |
| % change from 07/08 | -1.5% | -16.2% | -3.9% | -33.1% | 4.8% | -18.2% | -10.0% |

Knife = knife or other sharp instrument (including broken glass/bottles) piercing the skin or, for threats and attempts, instruments normally capable of piercing the skin

Knife crime figures published reflect the APACS technical definition for 2008/09 which differs from that used in 2007/08. Manual checking has been undertaken to try to provide comparative 2007/08 figures, however it is not possible to provide completed comparable figures. In 2008/09 knife crime includes "where the victim is convinced of the presence of a knife, even if it is concealed and there is evidence of the suspect's intention to create this impression"; these occurrences were not included in previously published 2007/08 data.

Serious sexual crime OBTJ rate

The table below shows % of persons brought to justice for serious sexual crimes against the total number of serious sexual crimes

| OBTJ Crime category | Jun 2008 | Jul 2008 | Aug 2008 | Sep 2008 | Oct 2008 | Nov 2008 | Rolling average |
|---------------------------------|----------|----------|----------|----------|----------|----------|-----------------|
| Tier 1: Serious Sexual Offences | 53% | 36% | 35% | 46% | 37% | 32% | 35% |

Murder offences

2008/2009 target = <16 murder offences

| | Central | Isle of Wight | North & East | Portsmouth | Southampton | Western | Force |
|---------------------|---------|---------------|--------------|------------|-------------|---------|---------------|
| YTD February 2009 | 1 | 1 | 1 | 2 | 3 | 2 | 10 |
| YTD February 2008 | 5 | 0 | 3 | 4 | 3 | 2 | 17 |
| % change from 07/08 | | | | | | | -41.2% |

For more information, please go to the Specialist Operations - 7 OCU page

Asset recovery

Asset recovery is the sum total of the values of cash forfeitures and confiscation orders

| | Central | Isle of Wight | North & East | Portsmouth | Southampton | Western | Force |
|------------|------------|---------------|--------------|------------|-------------|-----------|--------------------|
| April 2008 | £38,187.90 | £0.00 | £18,413.50 | £0.00 | £0.00 | £0.00 | £56,601.40 |
| May 2008 | £0.00 | £0.00 | £0.00 | £0.00 | £69,735.00 | £0.00 | £69,735.00 |
| June 2008 | £76,739.37 | £0.00 | £146,538.50 | £0.00 | £8,676.00 | £4,693.00 | £236,646.87 |

Prevent, reduce and detect crime

| | | | | | | | |
|------------------|--------------------|------------------|--------------------|-------------------|--------------------|------------------|--------------------|
| July 2008 | £0.00 | £0.00 | £0.00 | £1,104.00 | £2,035.00 | £2,100.00 | £5,239.00 |
| August 2008 | £0.00 | £0.00 | £22,699.60 | £0.00 | £15,469.55 | -£19,520.00 | £18,649.15 |
| September 2008 | £0.00 | £0.00 | £1,175.00 | £4,447.95 | £221,549.03 | £21,427.00 | £248,598.98 |
| October 2008 | £9,273.38 | £1,956.76 | £60,660.00 | £5,400.00 | £0.00 | £0.00 | £77,290.14 |
| November 2008 | £0.00 | £7,930.00 | £1,710.00 | £1,250.00 | £22,012.77 | £0.00 | £32,902.77 |
| December 2008 | £0.00 | £0.00 | £0.00 | £0.00 | £1.00 | £0.00 | £1.00 |
| January 2009 | £0.00 | £0.00 | £5,000.00 | £0.00 | £3,150.00 | £0.00 | £8,150.00 |
| February 2009 | No data received | | | | | | £0.00 |
| Cumulative total | £124,200.65 | £9,886.76 | £256,196.60 | £12,201.95 | £342,628.35 | £8,700.00 | £753,814.31 |

Prolific and other Priority Offenders (PPOs) convictions

Number of convictions recorded against identified, prolific and other priority offenders

| Convictions | Aug 2008 | Sep 2008 | Oct 2008 | Nov 2008 | Dec 2008 | Jan 2009 |
|--|----------|----------|----------|----------|----------|----------|
| Persistent Young Offenders | 67 | 74 | 86 | 71 | 89 | 94 |
| Priority Prolific Offenders | 16 | 20 | 35 | 13 | 28 | 27 |
| Persistent Priority Prolific Young Offenders | 1 | 2 | 1 | 2 | 5 | 3 |
| Young Offenders | 183 | 192 | 155 | 162 | 183 | 230 |

Class A drugs sanction detections

| | Central | Isle of Wight | North & East | Portsmouth | Southampton | Western | YTD February 2009 target | | | 366 |
|-------------------|---------|---------------|--------------|------------|-------------|---------|--------------------------|---|----|------------|
| | Crime | Operations | No OIC | Force | | | | | | |
| YTD February 2009 | 19 | 40 | 84 | 30 | 70 | 42 | 43 | 2 | 12 | 342 |
| YTD February 2008 | 33 | 30 | 51 | 24 | 59 | 47 | 199 | 6 | 16 | 465 |

Drug Intervention Measures (DIMs)

| | Central | Isle of Wight | North & East | Portsmouth | Southampton | Western | Crime | Force |
|---------------------|------------------|---------------|--------------|------------|-------------|---------|-------|------------|
| YTD February 2009 | No data received | | | | | | | 0 |
| YTD February 2008 | 23 | 33 | 58 | 15 | 28 | 14 | 1 | 172 |
| % change from 07/08 | No data received | | | | | | | 0 |

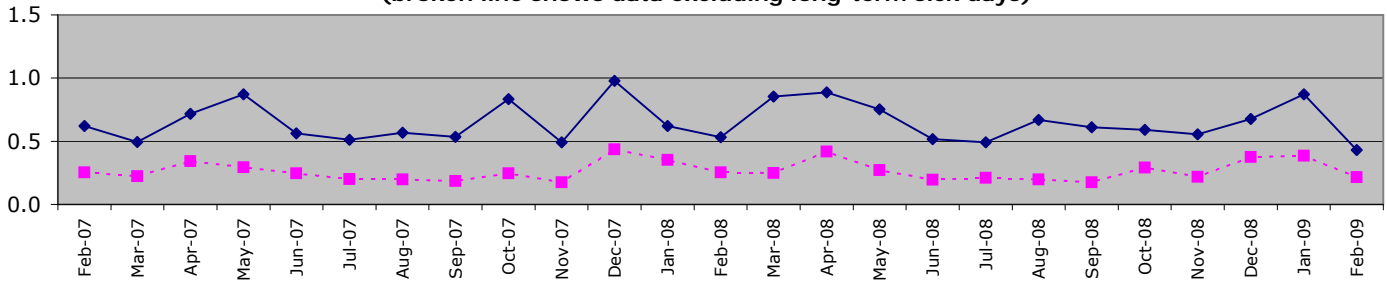
Organisational management

All Police officer sickness YTD = **7.07**

All Police officer sickness Feb = **0.43**

Police officers in OCUs

**Sickness and injury absence days per officer by month
(broken line shows data excluding long-term sick days)**

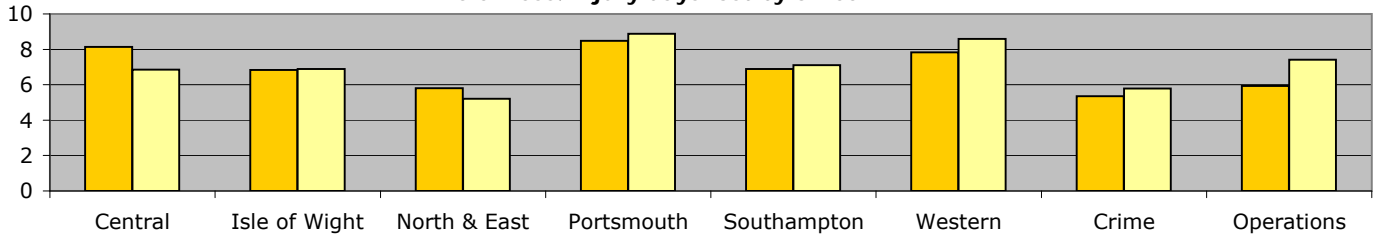


Force target for 08/09 = 7.5 days or fewer per officer (6.88 for 11 months) **YTD = 7.06 days lost per officer**

| | Central | Isle of Wight | North & East | Portsmouth | Southampton | Western | Crime | Operations | OCU Totals |
|--------------------------|---------|---------------|--------------|------------|-------------|---------|-------|------------|------------|
| YTD Apr 08 - February 09 | 6.86 | 6.88 | 5.21 | 8.88 | 7.11 | 8.60 | 5.78 | 7.41 | 7.06 |
| YTD Apr 07 - February 08 | 8.14 | 6.83 | 5.80 | 8.49 | 6.89 | 7.83 | 5.35 | 5.93 | 6.97 |
| This month | 0.56 | -0.35 | 0.50 | 0.64 | 0.14 | 0.73 | 0.21 | 0.54 | 0.43 |
| % change | -15.8% | 0.7% | -10.1% | 4.7% | 3.1% | 9.8% | 8.1% | 24.9% | 1.3% |

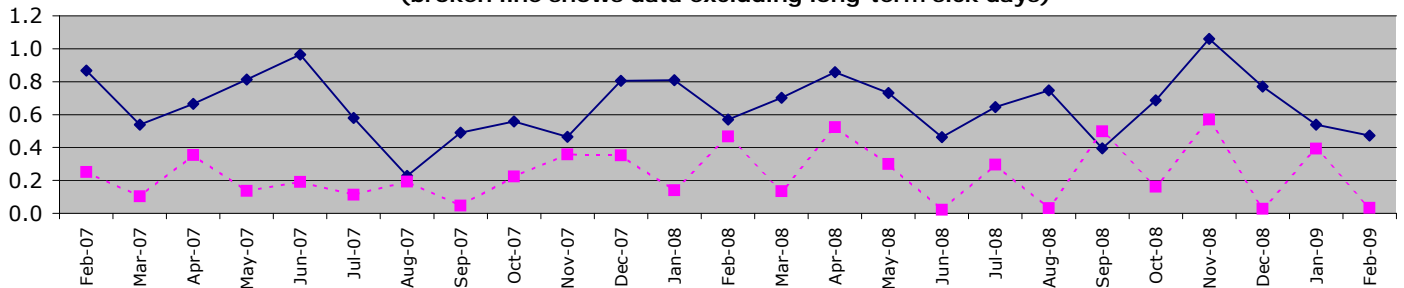
From January 09 "Operations" no longer includes SO Portfolio and Projects Staff

Sickness/injury days lost by officer YTD



Police officers not in OCUs

**Sickness and injury absence days per police officer by month
(broken line shows data excluding long-term sick days)**

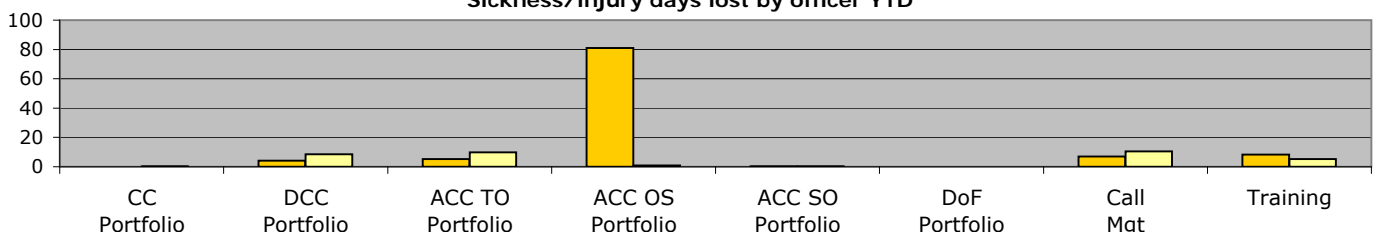


Force target for 08/09 = 7.5 days or fewer per officer (6.88 for 11 months) **YTD = 7.26 days lost per officer**

| | CC Portfolio | DCC Portfolio | ACC TO Portfolio | ACC OS Portfolio | ACC SO Portfolio | DoF Portfolio | Call Mgt | Training | Non-OCU Totals |
|--------------------------|--------------|---------------|------------------|------------------|------------------|---------------|----------|----------|----------------|
| YTD Apr 08 - February 09 | 0.18 | 8.59 | 9.73 | 0.93 | 0.17 | N/A | 10.49 | 5.21 | 7.26 |
| YTD Apr 07 - February 08 | 0.00 | 4.13 | 5.22 | 81.00 | 0.15 | N/A | 7.08 | 8.31 | 7.05 |
| This month | 0.00 | 0.63 | 1.09 | 0.00 | 0.00 | N/A | 0.76 | 0.11 | 0.46 |
| % change | 0.0% | 107.8% | 86.2% | -98.8% | 13.6% | N/A | 48.1% | -37.3% | 3.0% |

ACC OS Portfolio excludes Call Mgt & Training figures which are reported on separately. No police officers work within DoF Portfolio. From Jan 09 - SO Portfolio includes CJD, SO Portfolio and Projects Staff

Sickness/injury days lost by officer YTD



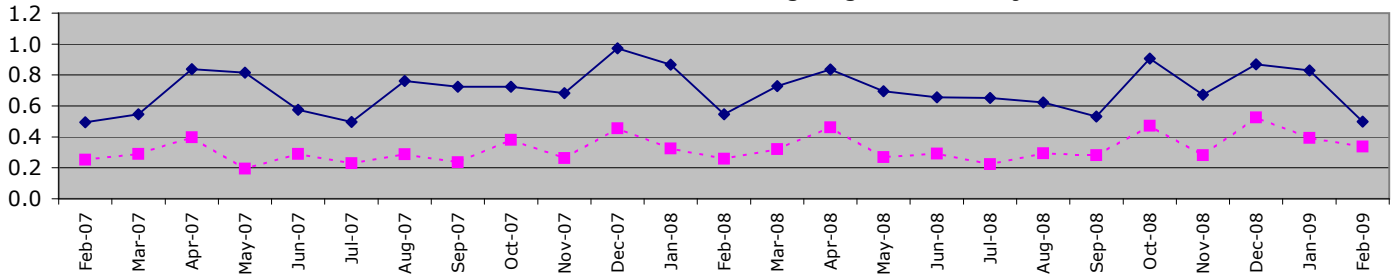
Organisational management

All Police staff sickness YTD = **7.84**

All Police staff sickness Feb = **0.53**

Police staff in OCUs

**Sickness and injury absence days per police staff member by month
(broken line shows data excluding long-term sick days)**

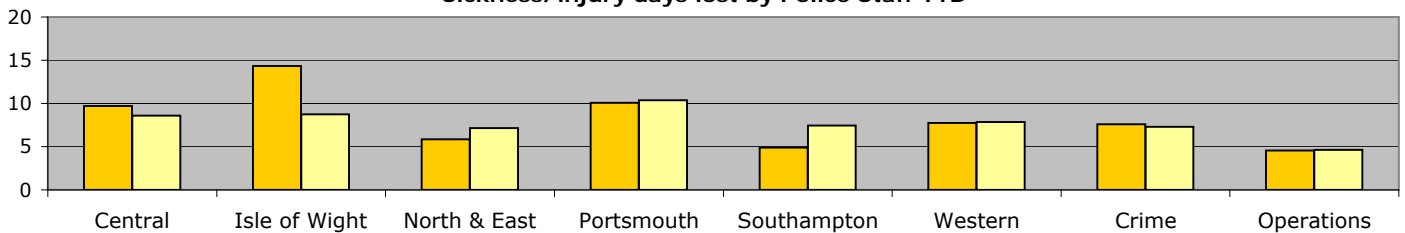


Force target for 08/09 = 7.5 days or fewer per staff (6.88 for 11 months) **YTD = 7.79 days lost per staff member**

| | Central | Isle of Wight | North & East | Portsmouth | Southampton | Western | Crime | Operations | OCU Totals |
|--------------------------|-------------|---------------|--------------|--------------|-------------|-------------|-------------|------------|--------------|
| YTD Apr 08 - February 09 | 8.58 | 8.75 | 7.15 | 10.35 | 7.44 | 7.84 | 7.30 | 4.62 | 7.79 |
| YTD Apr 07 - February 08 | 9.71 | 14.33 | 5.84 | 10.08 | 4.88 | 7.75 | 7.58 | 4.57 | 7.84 |
| This month | 0.45 | 0.13 | 0.82 | 0.96 | 0.04 | 0.83 | 0.45 | 0.14 | 0.50 |
| % change | -11.6% | -38.9% | 22.4% | 2.7% | 52.4% | 1.1% | -3.7% | 1.1% | -0.7% |

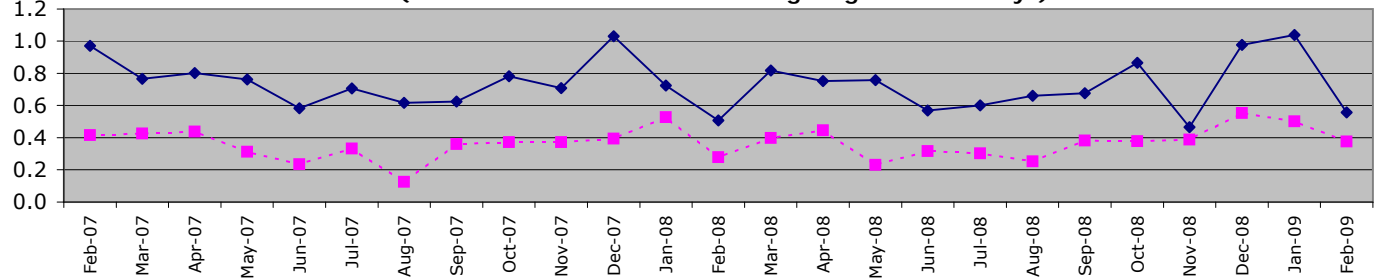
From January 09 "Operations" no longer includes SO Portfolio and Projects Staff

Sickness/injury days lost by Police Staff YTD



Police staff not in OCUs

**Sickness and injury absence days per police staff member by month
(broken line shows data excluding long-term sick days)**



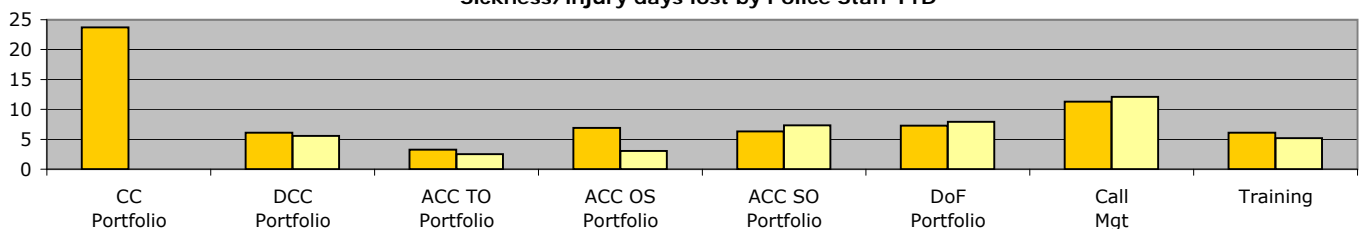
Force target for 08/09 = 7.5 days or fewer per staff (6.88 for 11 months) **YTD = 7.89 days lost per staff member**

| | CC Portfolio | DCC Portfolio | ACC TO Portfolio | ACC OS Portfolio | ACC SO Portfolio | DoF Portfolio | Call Mgt | Training | Non-OCU Totals |
|--------------------------|--------------|---------------|------------------|------------------|------------------|---------------|--------------|----------|----------------|
| YTD Apr 08 - February 09 | 0.00 | 5.56 | 2.53 | 3.08 | 7.36 | 7.94 | 12.10 | 5.22 | 7.89 |
| YTD Apr 07 - February 08 | 23.74 | 6.08 | 3.29 | 6.89 | 6.33 | 7.27 | 11.28 | 6.12 | 7.87 |
| This month | 0.00 | -0.15 | 0.21 | 0.22 | 0.48 | 0.79 | 1.20 | 0.61 | 0.56 |
| % change | -100.0% | -8.6% | -23.1% | -55.4% | 16.2% | 9.1% | 7.3% | -14.8% | 0.2% |

ACC OS Portfolio excludes Call Mgt & Training figures which are reported on separately.

From Jan 09 - SO Portfolio includes CJD, SO Portfolio and Projects Staff

Sickness/injury days lost by Police Staff YTD



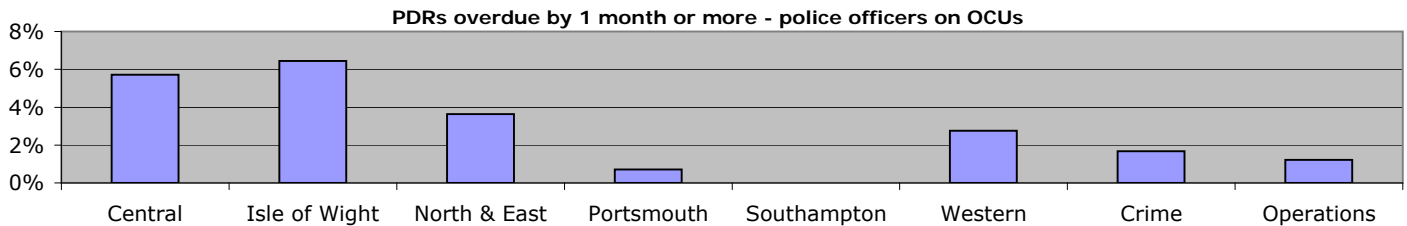
Note: The December sickness figures were re-run in January to provide more accurate data - data was gathered for the December

Organisational management

profile before staff were able to update Delphi following the Christmas/New Year period.

Overdue PDRs

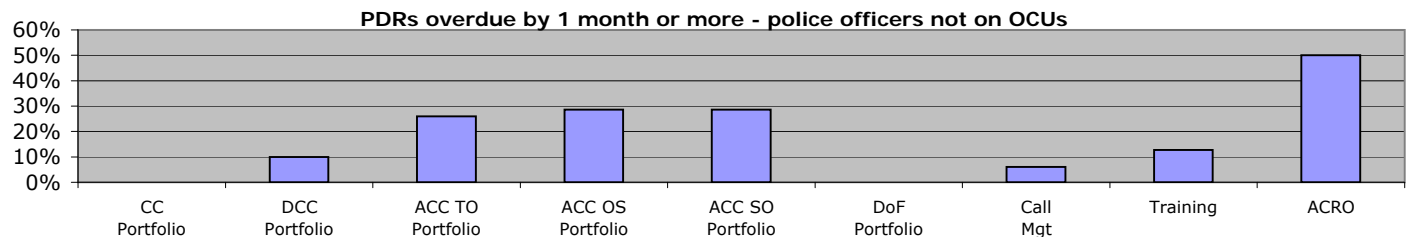
Police officer PDRs - police officers in OCUs



| February 2009 | Central | Isle of Wight | North & East | Portsmouth | Southampton | Western | Crime | Operations |
|---------------|---------|---------------|--------------|------------|-------------|---------|-------|------------|
| Population | 629 | 217 | 550 | 418 | 490 | 507 | 418 | 408 |
| Overdue | 36 | 14 | 20 | 3 | 0 | 14 | 7 | 5 |
| % overdue | 5.7% | 6.5% | 3.6% | 0.7% | 0.0% | 2.8% | 1.7% | 1.2% |

From January 09 "Operations" no longer includes SO Portfolio and Projects Staff

Police officer PDRs - police officers not on OCUs

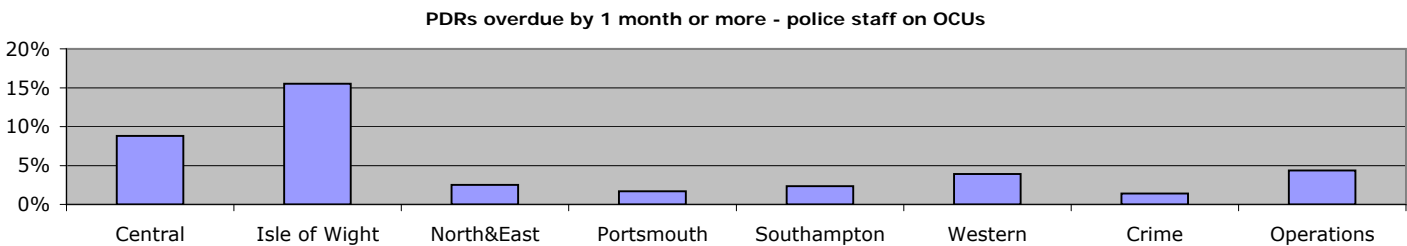


| February 2009 | CC Portfolio | DCC Portfolio | ACC TO Portfolio | ACC OS Portfolio | ACC SO Portfolio | DoF Portfolio | Call Mgt | Training | ACRO |
|---------------|--------------|---------------|------------------|------------------|------------------|---------------|----------|----------|-------|
| Population | 9 | 40 | 27 | 7 | 7 | N/A | 33 | 63 | 2 |
| Overdue | 0 | 4 | 7 | 2 | 2 | N/A | 2 | 8 | 1 |
| % overdue | 0.0% | 10.0% | 25.9% | 28.6% | 28.6% | N/A | 6.1% | 12.7% | 50.0% |

ACC OS Portfolio excludes Call Mgt & Training figures which are reported on separately. No police officers work within DoF Portfolio

From Jan 09 - SO Portfolio includes CJD, SO Portfolio and Projects Staff

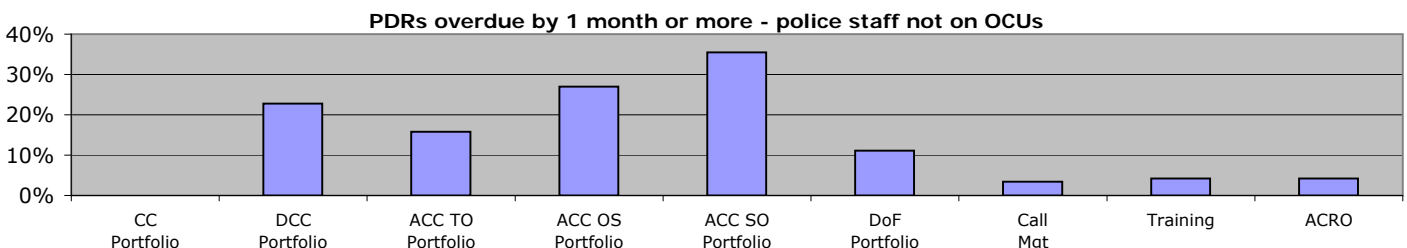
Police staff PDRs - police staff in OCUs



| February 2009 | Central | Isle of Wight | North&East | Portsmouth | Southampton | Western | Crime | Operations |
|---------------|---------|---------------|------------|------------|-------------|---------|-------|------------|
| Population | 239 | 103 | 199 | 179 | 214 | 204 | 288 | 138 |
| Overdue | 21 | 16 | 5 | 3 | 5 | 8 | 4 | 6 |
| % overdue | 8.8% | 15.5% | 2.5% | 1.7% | 2.3% | 3.9% | 1.4% | 4.3% |

From January 09 "Operations" no longer includes SO Portfolio and Projects Staff

Police staff PDRs - police staff not in OCUs



| February 2009 | CC Portfolio | DCC Portfolio | ACC TO Portfolio | ACC OS Portfolio | ACC SO Portfolio | DoF Portfolio | Call Mgt | Training | ACRO |
|---------------|--------------|---------------|------------------|------------------|------------------|---------------|----------|----------|------|
| Population | 2 | 281 | 38 | 63 | 62 | 144 | 413 | 95 | 359 |
| Overdue | 0 | 64 | 6 | 17 | 22 | 16 | 14 | 4 | 15 |
| % overdue | 0.0% | 22.8% | 15.8% | 27.0% | 35.5% | 11.1% | 3.4% | 4.2% | 4.2% |

ACC OS Portfolio excludes Call Mgt & Training figures which are reported on separately

Organisational management

From Jan 09 - SO Portfolio includes CJD, SO Portfolio and Projects Staff

Minority Ethnic Officer Recruitment

| | All recruits | Minority ethnic recruits | % |
|-------------------|--------------|--------------------------|------|
| YTD February 2009 | 81 | 1 | 1.2% |

Female Officer Representation

| | Male strength | Female strength | % |
|-------------------|---------------|-----------------|-------|
| YTD February 2009 | 2739.2 | 1016.9 | 27.1% |

NCRS compliance

| | Central | Isle of Wight | North & East | Portsmouth | Southampton | Western | Crime |
|-------------|-------------|---------------|--------------|-------------|-------------|-------------|---------|
| NCRS audits | Fair 82% | Fair 82% | Fair 84% | Poor 72% | Poor 64% | Fair 85% | No data |

Note: NCRS audit data relates to a rolling 12 mth period

| Self-Inspection | 91.0% | 85.0% | 80.0% | 66.0% | 81.0% | 90.0% | No data |
|-----------------|-------|-------|-------|-------|-------|-------|---------|
|-----------------|-------|-------|-------|-------|-------|-------|---------|

Note: Self-Inspections - only appealed records are moderated by the Force Crime Registrar

Budget spend

The actual spend to the end of January 2009 was £236.09m. This gives a projected spend for the force at the end of the financial year of £293.12m, which will be an overspend of £0.405m against the agreed budget.

The force is taking measures to eliminate this overspend during the course of the current financial year.

| | Central | Isle of Wight | North & East | Portsmouth | Southampton | Western | Crime | Operations |
|-------------------------------|----------|---------------|--------------|------------|-------------|-----------|-----------|------------|
| Projected overspend 2008/2009 | -£23,000 | -£80,000 | £586,000 | £566,000 | £17,000 | -£188,000 | -£108,000 | £511,000 |

Efficiency savings

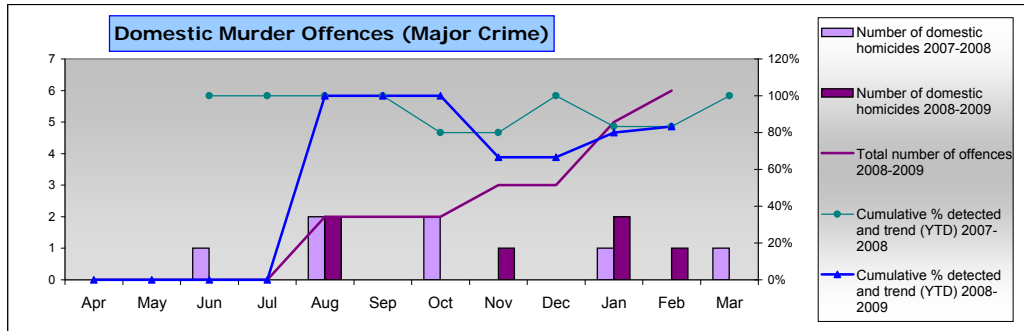
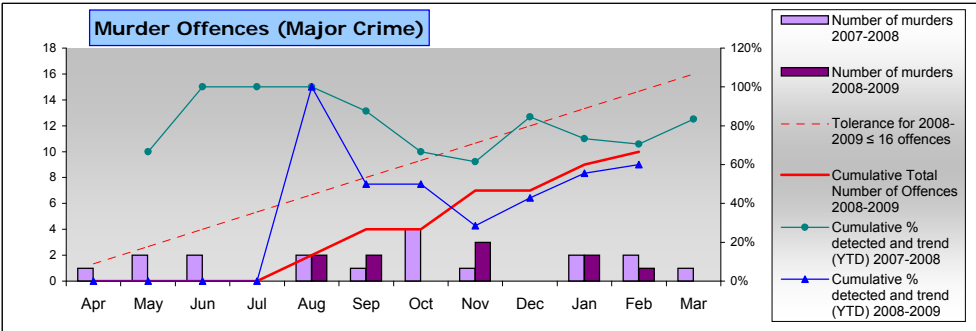
The Authority needs to maximise efficiency gains both due to its budgetary constraints and in order to achieve value for money.

In addition, there is a national Home Office target to deliver recurring efficiency or productivity gains equivalent to 9.3% of the 2007/08 'Gross Revenue Expenditure' by the end of 2010/11. Each Authority must set its own challenging target.

The Authority and Force are currently working to a target equivalent to the national target, which equates to £30m over the 3 years (an average of £10m per annum).

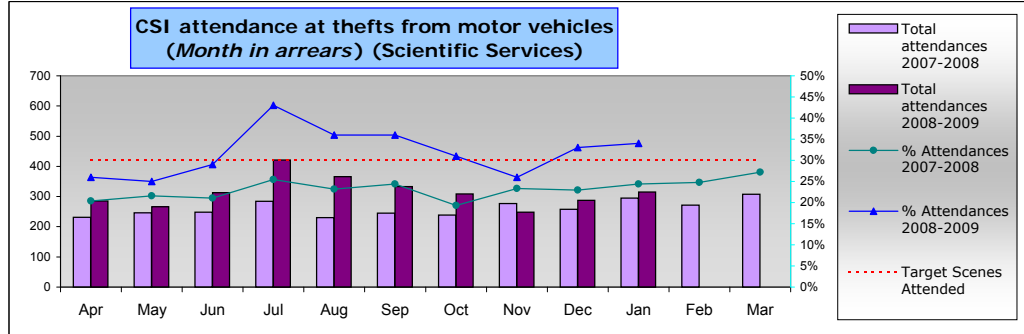
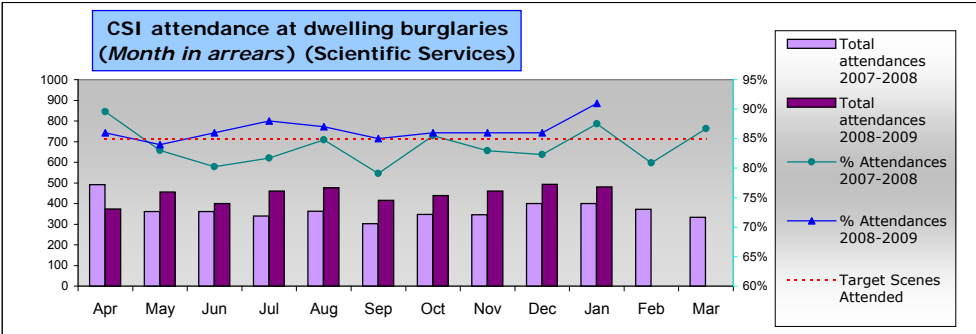
An efficiency saving register that is used as a tracking tool is now monitoring progress of ongoing efficiency initiatives valued at £15.6m across the current and future financial years. Some of the initiatives listed are not in a position yet to quantify the potential efficiency savings deliverable. It will be seen that there are also a number of initiatives listed on the register which are only at the start up stage of the project life cycle and are unlikely to deliver productivity gains within the required timeframe: they are nonetheless important as efficiency is an ongoing long term requirement.

Specialist Operations - 7 OCU



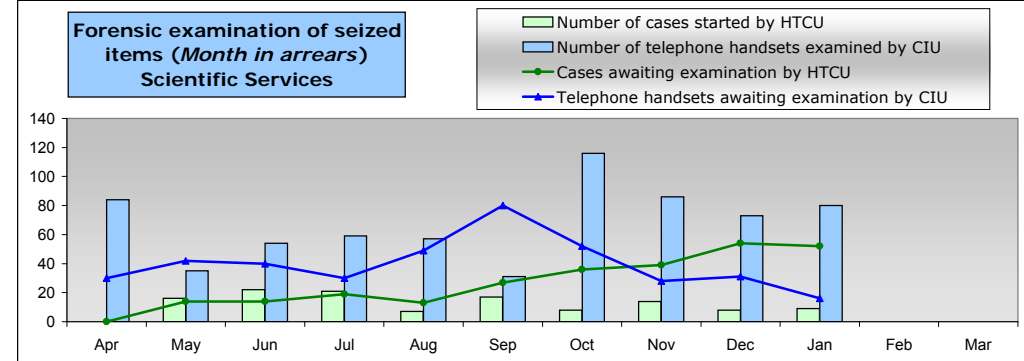
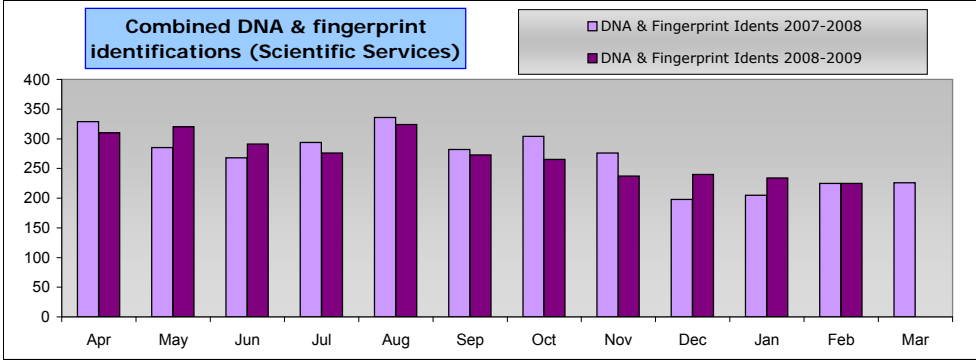
All murder offences this year compared to last year and detection rates
 The target is no more than 16 offences for the current year
 Detection target for murder is 100%

Domestic murder offences this year compared to last year and detection rates
 Detection target for murder is 100%



Burglary dwelling scene attendance rates. Target is no less than 85%

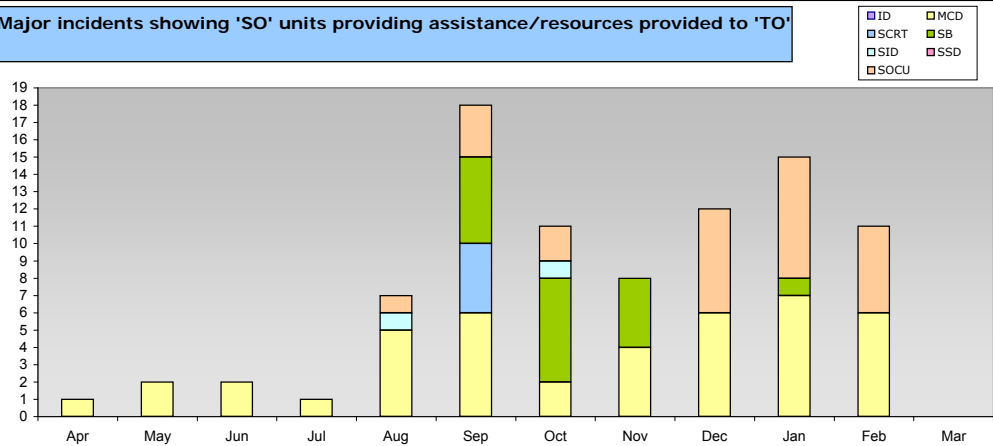
Theft from motor vehicle scene attendance rates. Target is no less than 30%



Combined DNA & fingerprint identifications this year compared to last year

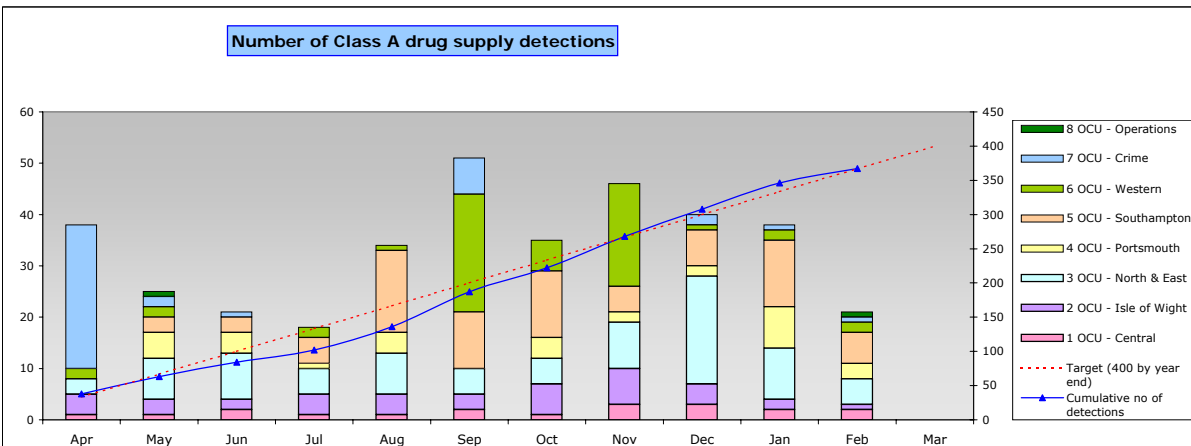
Number of cases started & cases awaiting examination by HTCUCI
 NB: Cases include all computing equipment not just computers (eg monitors, drives, etc...)
 Number of telephone handsets examined & telephone handsets awaiting examination by CIU

Major incidents showing 'SO' units providing assistance/resources provided to 'TO'



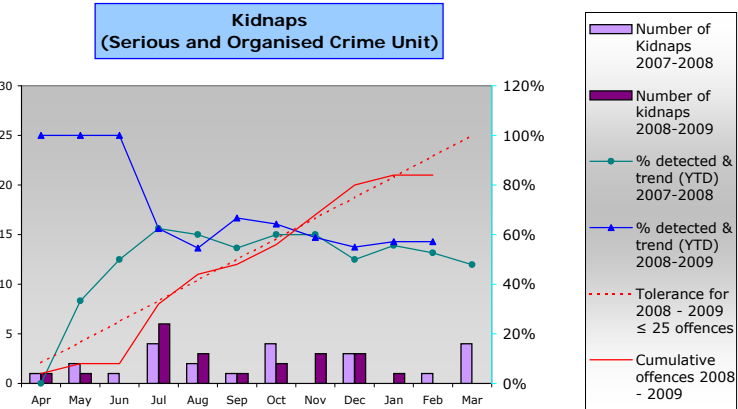
Serious/major incidents where 'SO' expertise or resources were utilised to assist or manage the investigation

Number of Class A drug supply detections



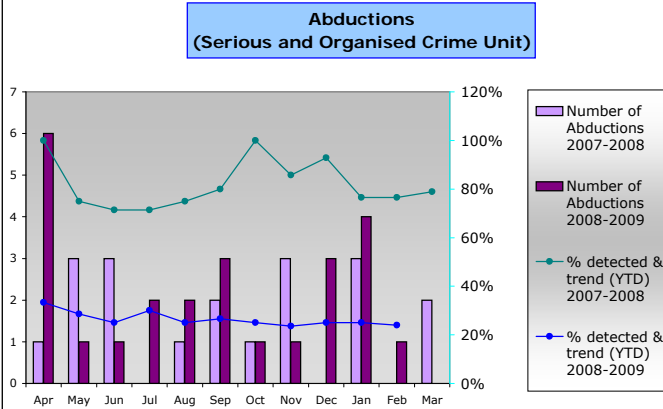
Number of detections for offences of Class A drug supply by month by OCU and total detections to date compared with Force target of 400 for year.

Kidnaps (Serious and Organised Crime Unit)



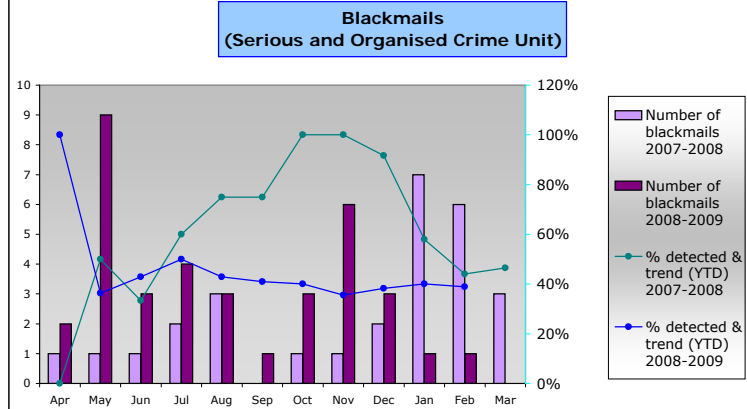
All kidnaps within force this year compared to last year and detection rates. Target for 2008/09 is no more than 25 offences (10% reduction on 2007/08)

Abductions (Serious and Organised Crime Unit)



All abductions within force this year compared to last year and detection rates

Blackmails (Serious and Organised Crime Unit)



All blackmails within force this year compared to last year and detection rates.

Specialist Operations - 8 OCU

| 8 OCU Commitment to Pre-Planned Operations - February 09 | | | | | | | | |
|--|---------------|----------|-----------|-----------|-----------|-----------|----------|------------|
| Op. Name | OCU Supported | | | | | | | Total |
| | 1 | 2 | 3 | 4 | 5 | 6 | Other | |
| Radon | 0 | 0 | 0 | 0 | 0 | 0 | 0 | 0 |
| Advasar | 0 | 0 | 0 | 0 | 0 | 0 | 0 | 0 |
| Cabot | 0 | 0 | 0 | 0 | 1 | 0 | 0 | 1 |
| NEMESIS | 13 | 0 | 3 | 10 | 3 | 9 | 0 | 38 |
| Other | 20 | 0 | 11 | 9 | 29 | 18 | 1 | 88 |
| Total Ops. | 33 | 0 | 14 | 19 | 33 | 27 | 1 | 127 |
| Arrests | 6 | 0 | 3 | 7 | 10 | 9 | 0 | 35 |
| FPNs | 2 | 0 | 2 | 18 | 7 | 1 | 0 | 30 |
| Seizures | 0 | 0 | 2 | 14 | 0 | 1 | 0 | 17 |
| Other | 0 | 0 | 12 | 20 | 4 | 2 | 0 | 38 |
| Total Results | 8 | 0 | 19 | 59 | 21 | 13 | 0 | 120 |

| 8 OCU Commitment to ANPR Operations - February 09 | | | | | | | | |
|---|---------------|----------|----------|-----------|-----------|----------|----------|------------|
| | OCU Supported | | | | | | | Total |
| | 1 | 2 | 3 | 4 | 5 | 6 | Other | |
| No. of Ops | 6 | 0 | 0 | 10 | 7 | 1 | 0 | 24 |
| Arrests | 3 | 0 | 0 | 7 | 3 | 0 | 0 | 13 |
| FPNs | 11 | 0 | 0 | 14 | 9 | 1 | 0 | 35 |
| Seizures | 10 | 0 | 0 | 14 | 20 | 0 | 0 | 44 |
| Other | 17 | 0 | 0 | 24 | 35 | 7 | 0 | 83 |
| Total Results | 41 | 0 | 0 | 59 | 67 | 8 | 0 | 175 |

| Interventions in support of OCUs and Force Strategy YTD | | | | | | | |
|---|------------------|------------------------------------|---------------|--------------|-----------|--------------|-------------------------|
| | Persons Arrested | February 2009 Incidents attended*1 | | | FPNs*2 | | S165 Vehicle Seizures*3 |
| | | Total | % DSP | % ONS | Disorder | Other | |
| ASU | 2 | Data given as a whole for 8 OCU | | | | 1 | |
| DSU | 387 | | | | 7 | 138 | |
| FSU | 642 | | | | 16 | 21 | |
| MSU | 27 | | | | 0 | 5 | |
| OPPU | 1 | | | | 0 | 2 | |
| SFO | 254 | | | | 1 | 112 | |
| ARV | 1262 | | | | 17 | 1667 | |
| RPU | 2006 | | | | 8 | 19637 | |
| Total | 4581 | 39490 | 12.41% | 7.47% | 49 | 21583 | 3862 |

*1 Altaris data - Dispatch (DSP) and Arrival (ONS) of 8 OCU units as a percentage of Grade 1 and 2 incidents created. Both DSP and ONS are a few hundred more than last month, a cause for increase of the number of calls can be attributed to the bad weather

8 OCU units were OnScene at 60.16% of those incidents they were dispatched to

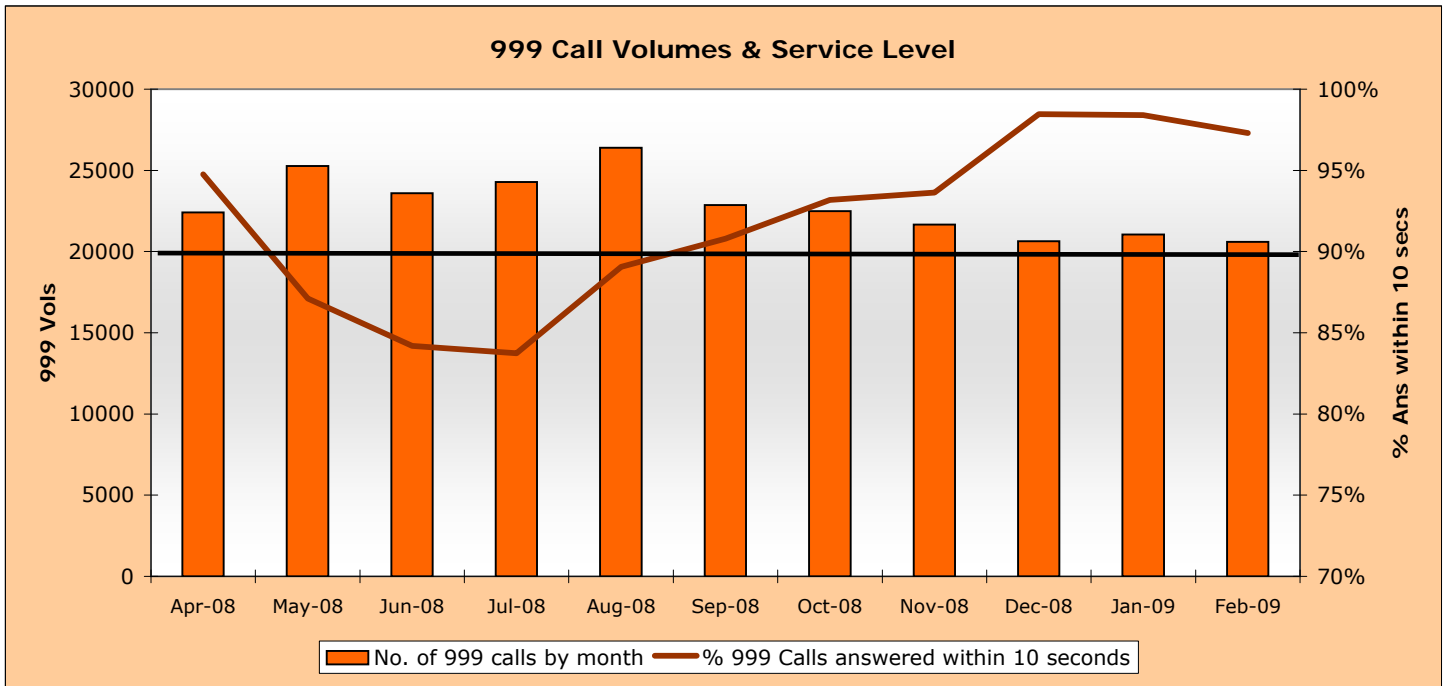
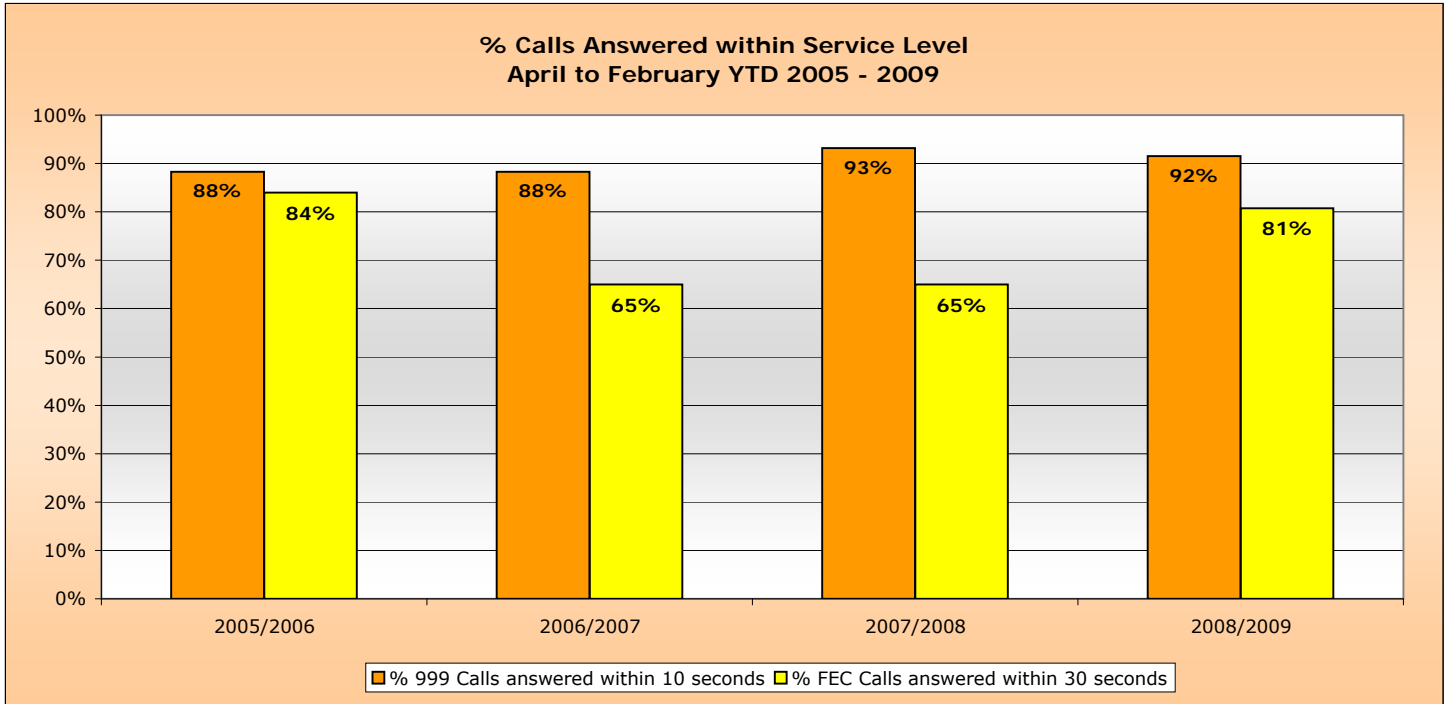
8 OCU units currently equate to 11% of the Force frontline operational officers

*2 FPNs are Fixed Penalty Notices issued

*3 Vehicles seized under Section 165 of the Road Traffic Act are for No Insurance or No Driving Licence

Operational Services

The February service level for 999 calls was 97.3% which brings the YTD to 91.55% compared to a target of 90%. The FEC achieved a service level of 89.69% and this brought their YTD service level up 80.73%



Victim focus

Hampshire Constabulary has always valued victim care. With the introduction of the Policing Pledge, this section will be used not only to inform how we manage our victims of crime, but our progress and actions that relate to the Pledge.

Particular emphasis surrounds compliance with the Victims' Code - keeping people updated - and it is this area that is currently reported on. Other commitments from the Pledge will be periodically reported on.

APACS indicators for user satisfaction

iQuanta data for MSG for the 12 months up to September 2008

| Crime type | MSG position | 1 st in MSG |
|---|--------------|------------------------|
| <u>Vehicle crime</u> | | |
| Ease of contact | 3/8 | Hertfordshire |
| Actions taken | 4/8 | Essex |
| Follow up | 4/8 | Hertfordshire |
| Treatment | 4/8 | Hertfordshire |
| OVERALL | 5/8 | Hertfordshire |
| <u>Burglary</u> | | |
| Ease of contact | 2/8 | Hertfordshire |
| Actions taken | 1/8 | Hampshire |
| Follow up | 1/8 | Hampshire |
| Treatment | 2/8 | Hertfordshire |
| OVERALL | 3/8 | Hertfordshire |
| <u>Violent crime</u> | | |
| Ease of contact | 4/8 | Essex |
| Actions taken | 4/8 | Essex |
| Follow up | 6/8 | Avon and Somerset |
| Treatment | 3/8 | Hertfordshire |
| OVERALL | 2/8 | Sussex |
| <u>RTC</u> | | |
| Ease of contact | 1/8 | Hampshire |
| Actions taken | 2/8 | Hertfordshire |
| Follow up | 3/8 | Hertfordshire |
| Treatment | 2/8 | Hertfordshire |
| OVERALL | 2/8 | Hertfordshire |
| <u>All users (excluding racist incidents)</u> | | |
| Ease of contact | 2/8 | Hertfordshire |
| Actions taken | 3/8 | Hertfordshire |
| Follow up | 3/8 | Hertfordshire |
| Treatment | 2/8 | Hertfordshire |
| OVERALL | 2/8 | Hertfordshire |

Victim Focus

Summary results of Dip-sample Victim Code Compliance checks (latest month for available data followed by YTD)

% where victim was informed within 5 days of an investigation being closed

| | Central | Isle of Wight | North & East | Portsmouth | Southampton | Western | Force |
|--------------|---------|---------------|--------------|------------|-------------|---------|-------|
| January 2009 | 100% | 100% | 100% | 100% | 75% | 100% | 96% |
| YTD | 100% | 98% | 97% | 97% | 63% | 98% | 92% |

% where the victim has been updated on a monthly basis (if applicable)

| | Central | Isle of Wight | North & East | Portsmouth | Southampton | Western | Force |
|--------------|---------|---------------|--------------|------------|-------------|---------|-------|
| January 2009 | 100% | 25% | 78% | 100% | 100% | 100% | 84% |
| YTD | 98% | 67% | 78% | 93% | 97% | 94% | 88% |

% where the victim was notified upon filing (if applicable)

| | Central | Isle of Wight | North & East | Portsmouth | Southampton | Western | Force |
|--------------|---------|---------------|--------------|------------|-------------|---------|-------|
| January 2009 | 100% | 95% | 90% | 100% | 100% | 100% | 98% |
| YTD | 100% | 93% | 86% | 98% | 100% | 95% | 95% |

Victim support status for crimes

| Month of Feb 2009 | Central | Isle of Wight | North & East | Portsmouth | Southampton | Western | Force | Force % |
|---------------------------------|---------|---------------|--------------|------------|-------------|---------|--------|---------|
| Victim informed of VSS accepted | 223 | 56 | 198 | 130 | 296 | 238 | 1141 | 9.41% |
| Victim informed of VSS declined | 1601 | 438 | 1281 | 1026 | 1652 | 1189 | 7187 | 59.30% |
| VSS aware | 98 | 12 | 39 | 13 | 26 | 95 | 283 | 2.34% |
| Victimless crime | 609 | 160 | 569 | 556 | 577 | 511 | 2982 | 24.61% |
| Not stated | 22 | 6 | 176 | 160 | 139 | 23 | 526 | 4.34% |
| Total crimes | 2553 | 672 | 2263 | 1885 | 2690 | 2056 | 12119 | N/A |
| % referred | 12.57% | 10.12% | 10.47% | 7.59% | 11.97% | 16.20% | 11.75% | N/A |

| YTD to Feb 2009 | Central | Isle of Wight | North & East | Portsmouth | Southampton | Western | Force | Force % |
|---------------------------------|---------|---------------|--------------|------------|-------------|---------|--------|---------|
| Victim informed of VSS accepted | 2765 | 645 | 2222 | 1540 | 3586 | 2681 | 13439 | 9.21% |
| Victim informed of VSS declined | 19136 | 6228 | 17689 | 13426 | 19622 | 16415 | 92516 | 63.42% |
| VSS aware | 916 | 103 | 547 | 259 | 343 | 561 | 2729 | 1.87% |
| Victimless crime | 6885 | 2479 | 6720 | 6688 | 6624 | 6032 | 35428 | 24.29% |
| Not stated | 34 | 71 | 455 | 819 | 361 | 23 | 1763 | 1.21% |
| Total crimes | 29736 | 9526 | 27633 | 22732 | 30536 | 25712 | 145875 | N/A |
| % referred | 12.38% | 7.85% | 10.02% | 7.91% | 12.87% | 12.61% | 11.08% | N/A |