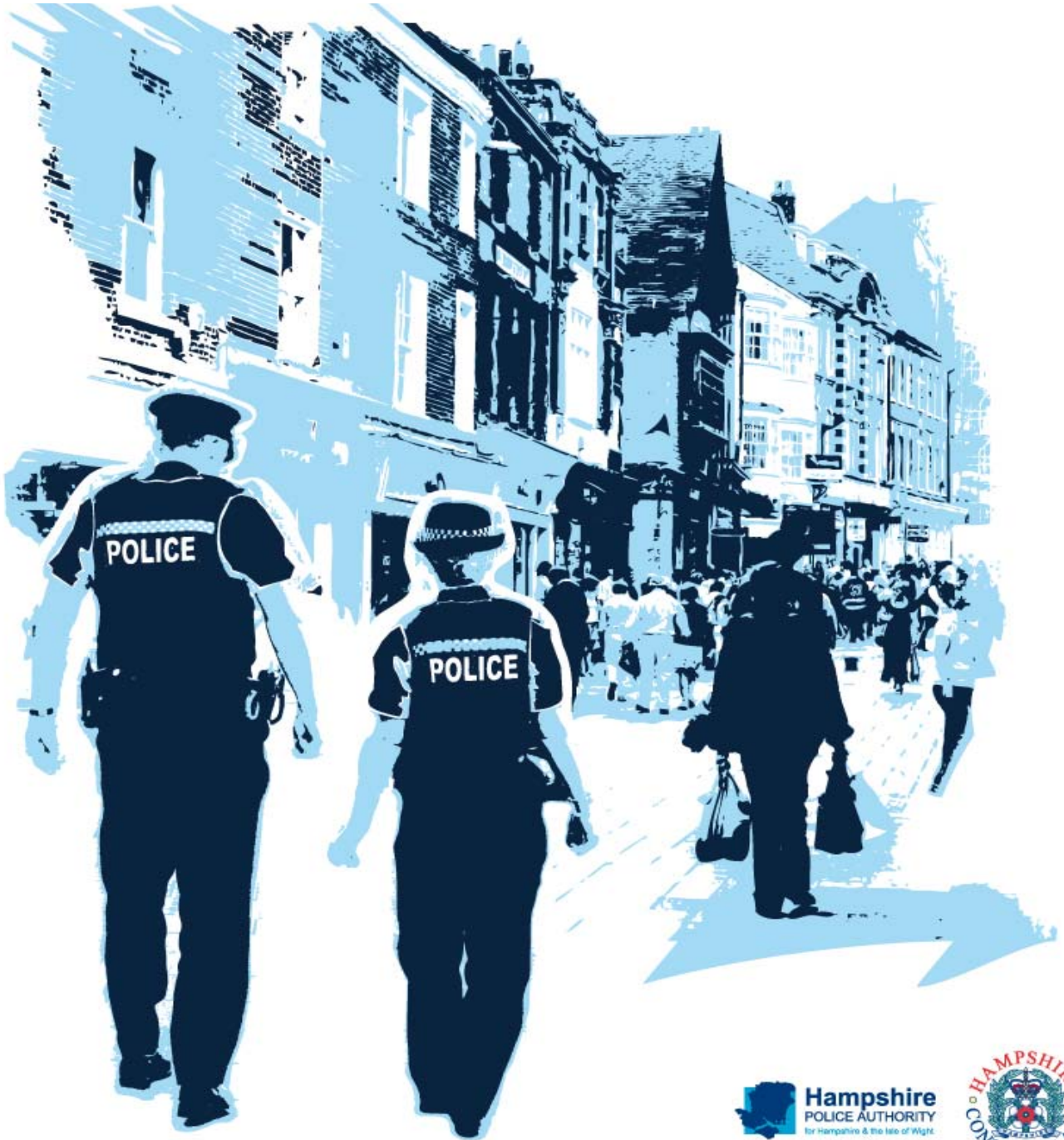


Performance Profile

April 2010



2010/11 Reporting Year

This document contains a strategic overview of the Constabulary's performance. It has a variety of performance measures within it. The format of the profile has been aligned to the Policing Priorities identified by the Control Strategy. It provides information on our performance against Force targets, some of the APACS Indicators and the Policing Pledge. It also aims to provide supplementary information to assist in understanding reasons behind the performance in these areas. It has been designed as a headline document that will enable our customers, both internally and externally, to easily assess performance information for key domains.

A matrix can be found at the front of the profile which reflects our year to date performance against our targets.

Performance in key areas is then explored in more depth with an indication of where each measure has originated - for example, APACS Indicator or a Force Control Strategy (FCS) measure.

Where applicable, within the document, MSG (Most Similar Group) data is published along with the crime and detection data. MSGs are calculated by the Home Office based on a number of socio-demographic & geographic variables which are strongly linked to crime/incident levels and the fear of crime. These groups provide a benchmark for comparison of crime and detection rates. Below the applicable crime tables there are three rows relating to MSG data. The first provides the MSG position for the OCU/Force for that crime type. The second displays OCU Actual, this is the number of offences per 1,000 population. The third row shows the MSG Average which is the total number of offences per 1,000 population divided by the number within the MSG. The same three rows are provided in relation to detection data, where data is provided in % figures rather than per 1,000 population.

Please note: iQuanta data is provisional. Within the profile, Hampshire data is published and compared against the MSG average. The other forces within Hampshire's MSG are: Avon and Somerset, Bedfordshire, Essex Hertfordshire, Kent, Sussex and Thames Valley. We are unable to provide figures from iQuanta for these forces, due to the provisional nature of this data.

This document is then taken forward by key stakeholders within the organisation to the Force Performance Review Group, where it is used to highlight areas of good performance and those for development.

Crime OCU contribute to the following areas within this document, either via investigation, forensic support, and/or review of these crimes: homicide, serious violent, sexual and acquisitive crime, class A drug supply, drug seizures, domestic violence/hate crime, FIU form submissions, gun/knife crime (where this results in a major investigation/forensic support).

This is an evolving document and as such, the contents of which may alter over time and any feedback would be welcomed by the Performance Review Team.

MSG Colour Key

Force	OCU
1-2	1-4
3-4	5-8
5-6	9-12
7-8	13-15

Index

Page FCS = Force Control Strategy; PRT = Performance Review Team

Year to date and monthly performance matrices

including notes on matrices terminology

Providing an excellent service

5	National public confidence measure	APACS 2.2	FCS	iQuanta
5	Local confidence survey data			Consultation & Research Team
6	Overall satisfaction	APACS 1.1	FCS	Consultation & Research Team
6	Being kept informed		FCS	Consultation & Research Team
6	Comparative satisfaction of minority ethnic groups	APACS 1.3		Consultation & Research Team
6	Satisfaction of victims of racist incidents	APACS 1.2		Consultation & Research Team
6	MSG user satisfaction data			Consultation & Research Team

An active presence in every neighbourhood

7	Rowdy and nuisance behaviour		FCS	Business Objects
8	Criminal damage		FCS	Business Objects

Catching criminals and managing offenders

9	Serious acquisitive crime	APACS 5.2&6.2	FCS	Business Objects
10	Serious acquisitive crime breakdown			Business Objects
10	Robbery, dwelling burglary, vehicle crime			Business Objects
10	Theft of a motor vehicle, theft from a motor vehicle			Business Objects
10	Organised crime groups			Business Objects

Protecting our communities

11	Violence against the person with injury	APACS 5.5&5.6		Business Objects
12	Serious violent crime, sanction detections	APACS 5.1&6.1	FCS	Business Objects
13	Assault with less serious injury	APACS 5.3	FCS	Business Objects
14	Reduction in dwelling burglary	APACS 5.2		Business Objects

Making the most of our resources

15	BME recruitment	APACS 13.1	FCS	PRT - Delphi + Personnel - Staffing Figures
----	-----------------	------------	-----	---

Equipping our team to deliver

15	Minority ethnic officer recruitment	APACS 3.1		Personnel
15	Female officer representation	APACS 3.2		Personnel

Monitoring information

16	Safer Neighbourhood teams - abstractions
16	Safer Neighbourhood teams - personnel data
17	Serious sexual offences - detections
17	Class A drugs sanction detections
17	Drug seizures information
17	Bail rates
17	First time entrants into the criminal justice system
18	Detections by disposal type - volume and proportion
18	Forensic results for vehicle crime
18	Outstanding suspects
19	All crime
20	Prolific and other priority offenders (PPOs) convictions
20	FIU1 submissions
20	Actual cash seizure value
20	Gun crime
20	Knife crime
20	Murder offences
21	MAPPAs visits
21	Missing persons
22	Casualty reduction
23	Stop and search - Internal use only
23	Special Constabulary balanced scorecard

Year to date performance targets matrix

	Target	Actual	Central	Isle of Wight	North & East	Portsmouth	Southampton	Western
Providing an excellent service								
Confidence in local police	55%	52.3%	This is a Force measure					
Overall satisfaction (data for rolling 12 months)	68.0%	67.0%	69.0%	69.0%	67.0%	65.0%	63.0%	71.0%
Local confidence measure	87.3%	82.0%	83.0%	83.0%	80.0%	79.0%	84.0%	82.0%
An active presence in every neighbourhood								
Rowdy & nuisance behaviour (inc vehicle nuisance)	20% reduction on 3 yr average	6017	1153	349	1067	950	1433	1065
	OCU specific targets		1129	374	1053	890	1275	979
Reduce criminal damage	20% reduction on 3 yr average	2303	538	180	410	322	469	384
	OCU specific targets		488	166	441	291	462	405
Catching criminals & managing offenders								
Serious acquisitive crime SD	15% sanction detection rate	12.8%	17.3%	7.4%	16.1%	10.1%	15.5%	6.1%
Organised crime group (OCG) - disruptions	40% of identified OCG's dismantled	not available	Owned by Crime OCU					
Protecting our communities								
Reduction in dwelling burglary	5% reduction on 3 yr average	457	82	13	75	111	108	68
	OCU specific targets		86	21	92	81	86	75
Reduce violence against the person with injury	5% reduction on 3 yr average	1195	261	90	213	212	254	165
	OCU specific targets		239	81	194	210	274	179
Making the most of our resources								
BME recruitment	5% of all recruits		No data available for April profile					
Equipping our staff to deliver								
Staff confidence in the organisation	To be determined from initial survey		No data available for April profile					
Force Total - targets achieved		0	3	3	3	0	2	4

Notes to be read in conjunction with matrices

All citizen focus data
SD
BME
OCU specific targets

Based on "completely or very satisfied"

Sanction detections

Black and minority ethnic

OCU specific targets are rounded to 2 decimal places; the actual figure may therefore seem the same but appear red due to this rounding

Force target areas for providing an excellent service

	Target	Actual	Central	Isle of Wight	North & East	Portsmouth	Southampton	Western
Confidence in local police	55%	52.3%	This is a Force measure					
Overall satisfaction (rolling 12 months)	68.0%	67.0%	69.0%	69.0%	67.0%	65.0%	63.0%	71.0%
Local Confidence Measure	87.3%	82.0%	83.0%	83.0%	80.0%	79.0%	84.0%	82.0%

National Public Confidence

This data is based on 'The police and local council are dealing with the anti-social behaviour and crime issues that matter in this area'. The Home Office has set a target to achieve a 12% improvement by 2012 against the baseline of 47.3%. This year's required improvement is 4%.

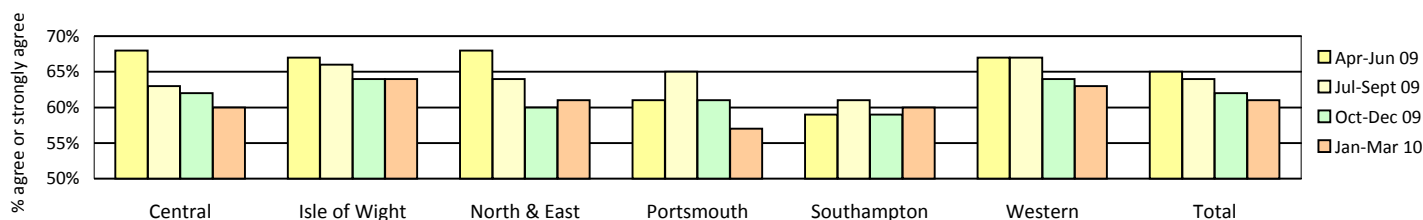
	Dec-09
Hampshire	52.3%
MSG Position	3 of 8
MSG average	50.9%

Local Confidence Survey Data

Figures relate to the percentage of respondents who agree or strongly agree with the question. Hampshire's local surveys have a confidence level of +/-4%. This means that changes of less than 4% may not reflect a real change in performance.

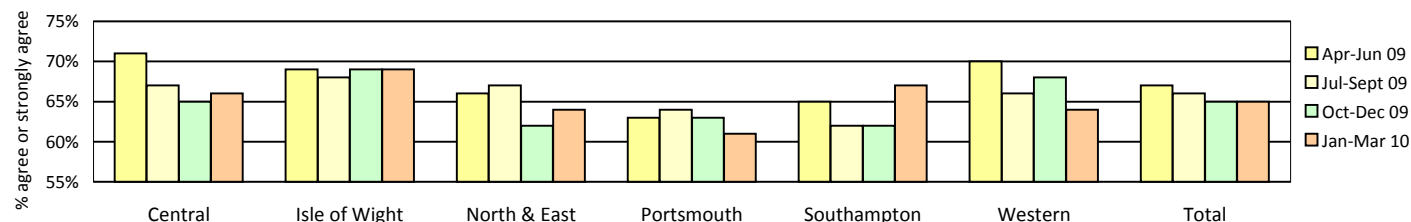
The police and local council are dealing with the anti-social behaviour and crime issues that matter in this area

	Central	Isle of Wight	North & East	Portsmouth	Southampton	Western	Force	No. Surveys
April - June 2009	68%	67%	68%	61%	59%	67%	65%	3591
July - September 2009	63%	66%	64%	65%	61%	67%	64%	8128
October - December 2009	62%	64%	60%	61%	59%	64%	62%	3822
January - March 2010	60%	64%	61%	57%	60%	63%	61%	3708



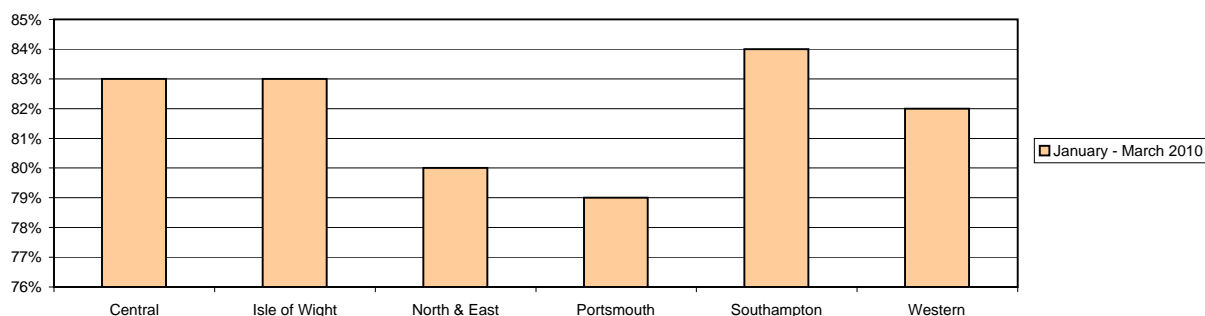
The police are dealing with the things that matter locally

	Central	Isle of Wight	North & East	Portsmouth	Southampton	Western	Force	No. Surveys
April - June 2009	71%	69%	66%	63%	65%	70%	67%	3591
July - September 2009	67%	68%	67%	64%	62%	66%	66%	8128
October - December 2009	65%	69%	62%	63%	62%	68%	65%	3822
January - March 2010	66%	69%	64%	61%	67%	64%	65%	3708



Taking everything into account, I have confidence in the Police in this area

	Central	Isle of Wight	North & East	Portsmouth	Southampton	Western	Force	No. Surveys
January - March 2010	83%	83%	80%	79%	84%	82%	82%	3708



Force target areas for providing an excellent service

Overall satisfaction (user satisfaction survey results)

SPI 1.1 Force Target

Rolling 12 months data relates to: May 09 - Apr 10; rolling 3 months data relates to Feb 10 - Apr 10

Overall satisfaction includes burglary, vehicle crime, violent crime and minor injury RTCs

Target 68%	Central	Isle of Wight	North & East	Portsmouth	Southampton	Western	Force	No. Surveys
Rolling 12 months	69%	69%	67%	65%	63%	71%	67%	8536
Rolling 3 months	68%	72%	72%	66%	66%	76%	70%	1869

Being kept informed (user satisfaction survey results)

Rolling 12 months data relates to: May 09 - Apr 10; rolling 3 months data relates to Feb 10 - Apr 10

Being kept informed includes burglary, vehicle crime, violent crime and minor injury RTCs

	Central	Isle of Wight	North & East	Portsmouth	Southampton	Western	Force	No. Surveys
Rolling 12 months	60%	61%	56%	54%	55%	62%	58%	8244
Rolling 3 months	62%	63%	58%	57%	57%	68%	61%	1824

Comparative satisfaction of minority ethnic groups

SPI 1.3

Data relates to interviews which took place May 09 - Apr 10

These figures are for overall satisfaction for burglary, vehicle crime, violent crime, minor injury RTCs.

	Completely and very satisfied	Completely, very and fairly satisfied
White (8040)	67.9%	84.7%
Minority Ethnic (378)	55.6%	78.8%
Satisfaction Gap	12.3%	5.9%

Satisfaction of victims of racist incidents

SPI 1.2

These figures relate to interviews which took place May 09 - Apr 10; these will be updated quarterly

Racist incident overall satisfaction = % completely or very satisfied

	Central	Isle of Wight	North & East	Portsmouth	Southampton	Western	Force
%	52%	70%	58%	66%	53%	59%	58%
Number of surveys	33	10	24	44	57	22	190

MSG information for user satisfaction

iQuanta data for MSG for the 12 months up to December 09 (iQuanta calculate satisfaction % based on those responding that they are completely, very or fairly satisfied)

	Previous MSG position	Current MSG position	Change		Previous MSG position	Current MSG position	Change
Vehicle crime				Burglary			
Ease of contact	3/8	4/8	↓	Ease of contact	4/8	4/8	↔
Actions taken	4/8	4/8	↔	Actions taken	6/8	6/8	↔
Follow up	4/8	4/8	↔	Follow up	1/8	1/8	↔
Treatment	5/8	5/8	↔	Treatment	4/8	7/8	↓
Whole Experience	4/8	4/8	↔	Whole Experience	3/8	3/8	↔

Violent crime

Ease of contact	2/8	4/8	↓
Actions taken	3/8	3/8	↔
Follow up	5/8	5/8	↔
Treatment	3/8	3/8	↔
Whole Experience	2/8	4/8	↓

RTC (minor injury)

Ease of contact	3/8	1/8	↑
Actions taken	2/8	2/8	↔
Follow up	2/8	2/8	↔
Treatment	3/8	2/8	↑
Whole Experience	3/8	2/8	↑

All users (excluding racist incidents)

Ease of contact	2/8	1/8	↑
Actions taken	4/8	4/8	↔
Follow up	3/8	2/8	↑
Treatment	4/8	4/8	↔
Whole Experience	3/8	4/8	↓

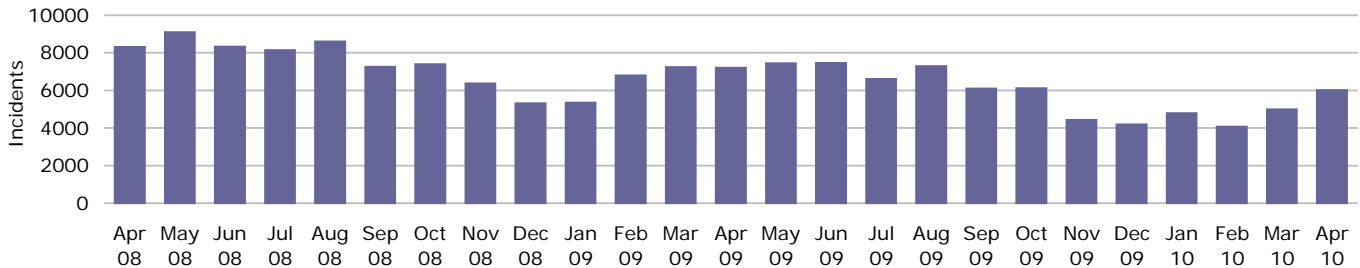
Force target areas for an active presence in every neighbourhood

	Target	Actual	Central	Isle of Wight	North & East	Portsmouth	Southampton	Western
Rowdy & nuisance behaviour (inc Vehicle Nuisance)	5700	6017	1153	349	1067	950	1423	1065
	OCU specific targets		1129	374	1053	890	1275	979
Reduce criminal damage	2253	2303	538	180	410	322	469	384
	OCU specific targets		488	166	441	291	462	405

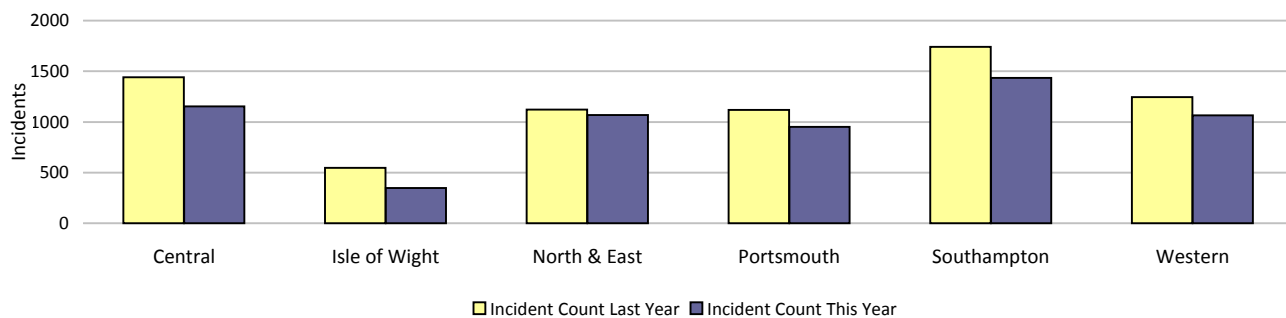
Rowdy & nuisance behaviour (including vehicle)

Force Target

In 2009-2010 Rowdy and Nuisance included Inappropriate use of Fireworks, Rowdy & Inconsiderate, Substance Misuse and Street Drinking, with Vehicle Related Nuisance being a separate entity for monitoring purposes however the decision this year has been to bring all key nuisance elements into one section



Incidents	Central	Isle of Wight	North & East	Portsmouth	Southampton	Western	Force
YTD Incidents	1153	349	1067	950	1433	1065	6017
YTD Target	1129	374	1053	890	1275	979	5700
YTD 09/10 Incidents	1441	547	1123	1118	1740	1244	7213
This month	1153	349	1067	950	1423	1065	6017
% change from 09/10	-19.99%	-36.20%	-4.99%	-15.03%	-17.64%	-14.39%	###



Note: MSG data is always published a month in arrears.

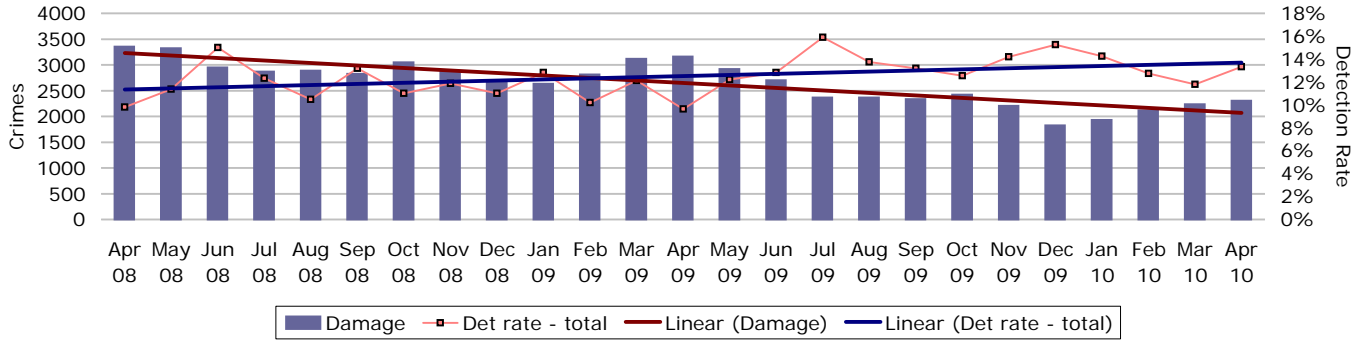
For an explanation of this data, refer to the Summary on page 2

April 2010

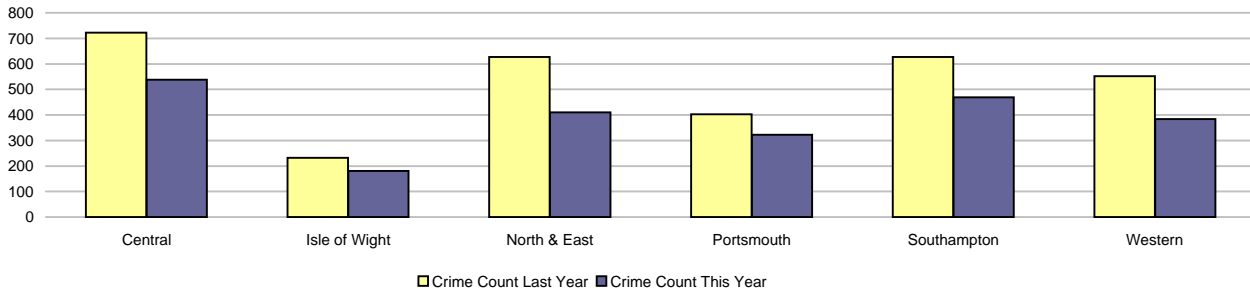
Force target areas for an active presence in every neighbourhood

Criminal damage

Force Target

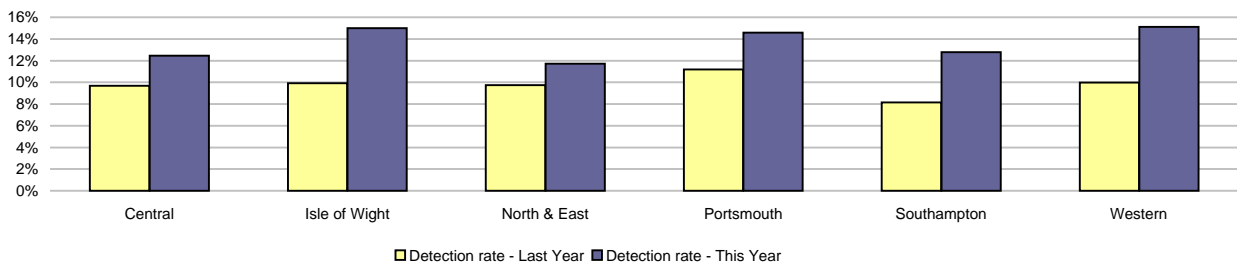


Crimes	Central	Isle of Wight	North & East	Portsmouth	Southampton	Western	Force
YTD Crimes	538	180	410	322	469	384	2303
YTD Target	488	166	441	291	462	405	2253
YTD 09/10 Crimes	722	232	627	402	627	552	3162
This month	538	180	410	322	469	384	2303
% change from 09/10	-25.48%	-22.41%	-34.61%	-19.90%	-25.20%	-30.43%	-27.17%
MSG position	12 of 15	8 of 15	8 of 15	13 of 15	15 of 15	13 of 15	8 of 8
OCU actual	2.658	2.959	2.543	4.216	5.29	2.721	3.167
MSG average	2.519	3.008	2.48	3.597	3.885	2.541	2.821



Detections	Central	Isle of Wight	North & East	Portsmouth	Southampton	Western	Force
YTD Detection Rate	12.45%	15.00%	11.71%	14.60%	12.79%	15.10%	13.33%
This month	12.45%	15.00%	11.71%	14.60%	12.79%	15.10%	13.33%
YTD 09/10 Detections	9.70%	9.91%	9.73%	11.19%	8.13%	9.96%	9.65%
MSG position	7 of 15	7 of 15	10 of 15	4 of 15	7 of 15	10 of 15	7 of 8
OCU actual	13.12%	15.49%	12.99%	13.31%	12.21%	12.44%	12.98%
MSG average	13.48%	14.31%	14.11%	11.69%	12.52%	13.54%	14.31%

Note: Detections refer to Sanction Detections ONLY



Note: MSG data is always published a month in arrears.

For an explanation of this data, refer to the Summary on page 2

April 2010

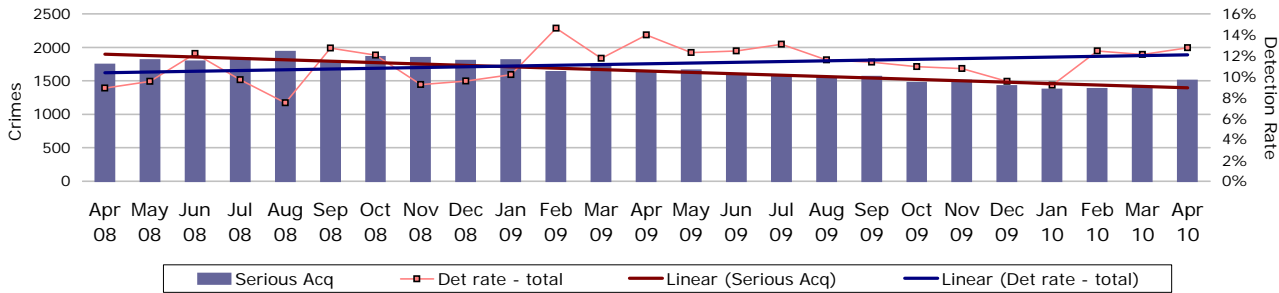
Force target areas for catching criminals and managing offenders

	Target	Actual	Central	Isle of Wight	North & East	Portsmouth	Southampton	Western
Serious acquisitive detection rate	15%	12.76%	17.3%	7.4%	16.1%	10.1%	15.5%	6.1%
	OCU specific targets		15%	15%	15%	15%	15%	15%
OCG disruptions	40% of identified OCG's dismantled	Not available	Not available					

Serious acquisitive crime

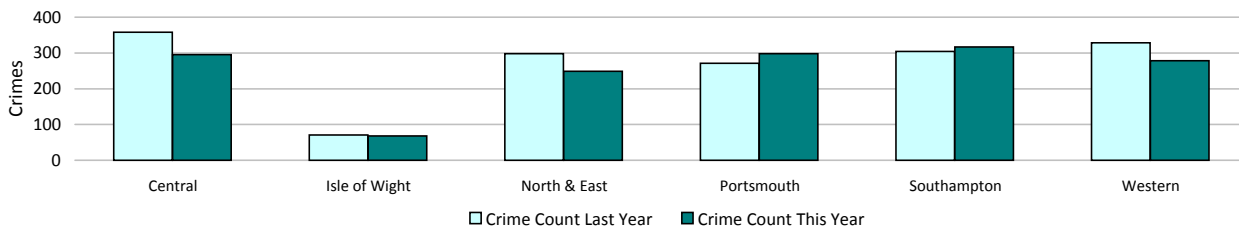
SPI 5.2 Force Target

Serious acquisitive crime consists of crimsec codes 28, 29, 34A, 34B, 37/2, 45 and 48



Crimes

	Central	Isle of Wight	North & East	Portsmouth	Southampton	Western	Force
YTD Crimes	295	68	249	298	317	278	1505
YTD 09/10 Crimes	358	71	298	271	304	328	1630
This month	295	68	249	298	317	278	1505
% change from 09/10	-17.60%	-4.23%	-16.44%	9.96%	4.28%	-15.24%	-7.67%
MSG position	8 of 15	7 of 15	11 of 15	7 of 15	5 of 15	13 of 15	6 of 8
OCU Actual	1.839	0.891	1.941	3.291	4.122	1.914	2.252
MSG average	2.406	1.975	2.331	4.621	4.343	1.97	2.885

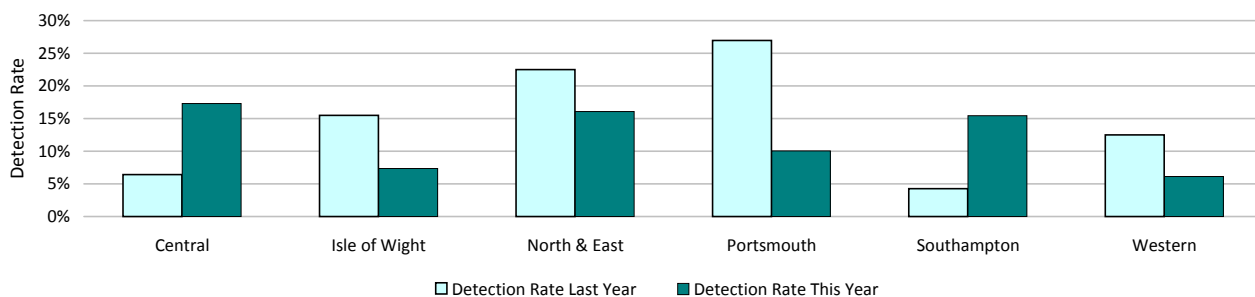


Detections

Target >15%

	Central	Isle of Wight	North & East	Portsmouth	Southampton	Western	Force
YTD Detection Rate	17.29%	7.35%	16.06%	10.07%	15.46%	6.12%	12.76%
This month	17.29%	7.35%	16.06%	10.07%	15.46%	6.12%	12.76%
YTD 09/10 Detections	6.42%	15.49%	22.48%	26.94%	4.28%	12.50%	13.99%
MSG position	13 of 15	6 of 15	9 of 15	5 of 15	10 of 15	12 of 15	4 of 8
OCU Actual	9.46%	15.20%	11.55%	13.79%	12.02%	10.98%	11.66%
MSG average	12.81%	14.52%	13.49%	11.61%	13.71%	12.92%	13.30%

Note: Detections refer to Sanction Detections ONLY



Force target areas for catching criminals and managing offenders

Serious acquisitive crime breakdown

Robbery

Year to date	Central	Isle of Wight	North & East	Portsmouth	Southampton	Western	Force
Crimes	11	1	15	21	22	7	77
09/10 crimes	9	1	10	28	25	14	87
% change from 09/10	22.22%	0.00%	50.00%	-25.00%	-12.00%	-50.00%	-11.49%
MSG position	3 of 15	4 of 15	9 of 15	3 of 15	11 of 15	6 of 15	3 of 8
Detection rate	0.00%	0.00%	26.67%	14.29%	81.82%	28.57%	35.06%
MSG position	2 of 15	1 of 15	11 of 15	6 of 15	12 of 15	13 of 5	3 of 8
April 2010							
Crimes	11	1	15	21	22	7	77
Detection rate	0.00%	0.00%	26.67%	14.29%	81.82%	28.57%	35.06%

Dwelling burglary

Year to date	Central	Isle of Wight	North & East	Portsmouth	Southampton	Western	Force
Crimes	82	13	75	111	108	68	457
09/10 crimes	88	20	88	57	74	76	403
% change from 09/10	-6.82%	-35.00%	-14.77%	94.74%	45.95%	-10.53%	13.40%
MSG position	5 of 15	2 of 15	8 of 15	5 of 15	4 of 15	6 of 15	2 of 8
Detection rate	26.83%	15.38%	16.00%	17.12%	17.59%	13.24%	18.16%
MSG position	12 of 15	10 of 15	13 of 15	4 of 15	7 of 15	4 of 15	5 of 8
April 2010							
Crimes	82	13	75	111	108	68	457
Detection rate	26.83%	15.38%	16.00%	17.12%	17.59%	13.24%	18.16%

Vehicle crime

Year to date	Central	Isle of Wight	North & East	Portsmouth	Southampton	Western	Force
Crimes	202	54	159	166	187	203	971
09/10 crimes	261	50	200	186	205	238	1140
% change from 09/10	-22.61%	8.00%	-20.50%	-10.75%	-8.78%	-14.71%	-14.82%
MSG position	7 of 15	1 of 15	4 of 15	2 of 15	9 of 15	9 of 15	2 of 8
Detection rate	14.36%	5.56%	15.09%	4.82%	6.42%	2.96%	8.44%
MSG position	11 of 15	1 of 15	8 of 15	4 of 15	8 of 5	14 of 15	6 of 8
April 2010							
Crimes	202	54	159	166	187	203	971
Detection rate	14.36%	5.56%	15.09%	4.82%	6.42%	2.96%	8.44%
Detection numbers	29	3	24	8	12	6	82

Theft of a motor vehicle

Year to date	Central	Isle of Wight	North & East	Portsmouth	Southampton	Western	Force
Crimes	28	13	42	23	42	32	180
MSG position	11 of 15	1 of 15	7 of 15	3 of 15	6 of 15	3 of 15	2 of 8
Detection rate	25.00%	23.08%	23.81%	13.04%	4.76%	15.63%	16.67%
MSG position	11 of 15	1 of 15	8 of 15	4 of 15	8 of 15	4 of 15	5 of 8
April 2010							
Crimes	28	13	42	23	42	32	180
Detection rate	25.00%	23.08%	23.81%	13.04%	4.76%	15.63%	16.67%
Detection numbers	7	3	10	3	2	5	30

Theft from a motor vehicle

Year to date	Central	Isle of Wight	North & East	Portsmouth	Southampton	Western	Force
Crimes	174	41	117	143	145	171	791
MSG position	6 of 15	1 of 15	4 of 15	4 of 15	9 of 15	11 of 15	2 of 8
Detection rate	12.64%	0.00%	11.97%	3.50%	6.90%	0.58%	6.57%
MSG position	12 of 15	12 of 15	6 of 15	8 of 15	6 of 15	14 of 15	6 of 8
April 2010							
Crimes	174	41	117	143	145	171	791
Detection rate	12.64%	0.00%	11.97%	3.50%	6.90%	0.58%	6.57%
Detection numbers	22	0	14	5	10	1	52

Robbery, dwelling burglary and vehicle crime are the component parts of serious acquisitive crime. These individual crime types do not have targets.

Number of Organised Crime Groups (OCGs) disrupted

YTD April 2010	2008/2009	2009/2010	YTD Target
Number of OCGs identified and mapped	0	1	
Number of OCGs disrupted or partially disrupted through Crime OCU activity	0	1	
Number of OCGs subject to tactical activity	13	12	

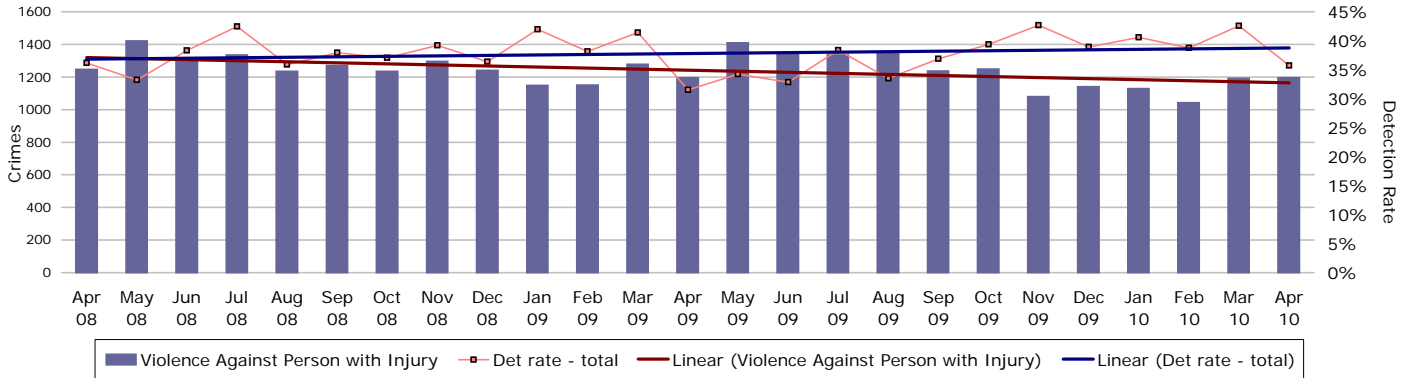
Force Target

Force target areas for protecting our communities

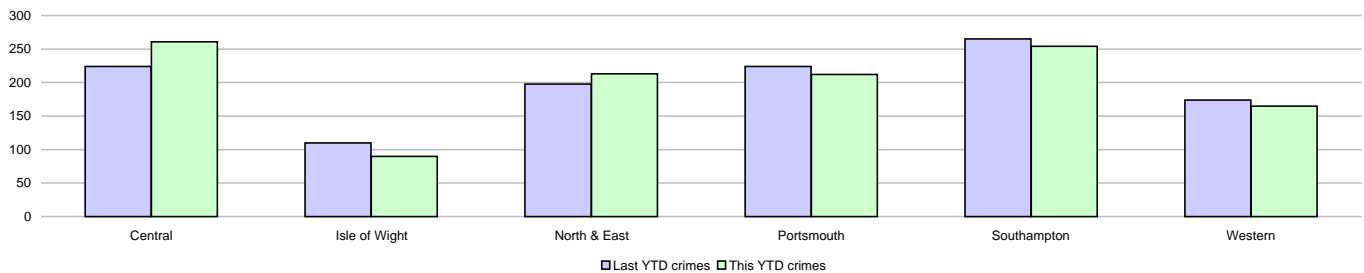
	Target	Actual	Central	Isle of Wight	North & East	Portsmouth	Southampton	Western
Reduction of VAP with injury	5% reduction on 3 yr average	1195	261	90	213	212	254	174
	OCU specific targets		239	81	194	210	274	179
Reduction in dwelling burglary	5% reduction on 3 yr average	457	82	13	75	111	108	68
	OCU specific targets		86	21	92	81	86	75

Violence Against the Person (VAP) with injury

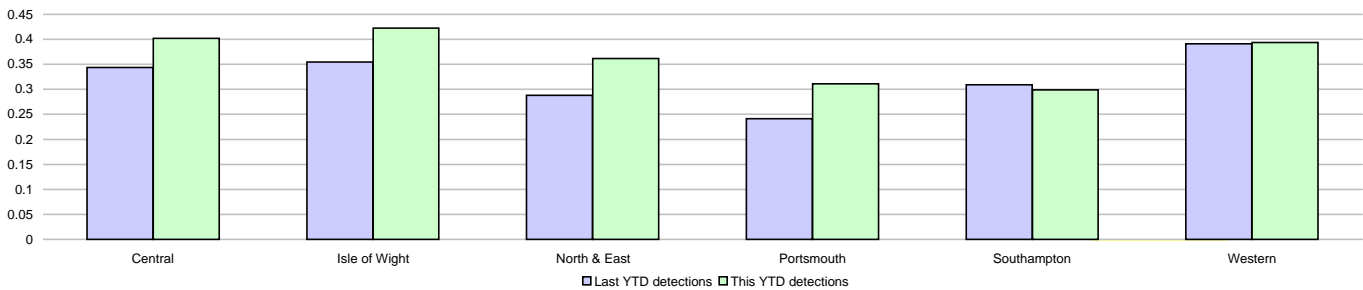
VAP with injury crimsec codes 1, 2, 4.1-4.4, 4.6-4.10, 5A, 5B, 5C, 8F, 8G, 8H, 8J, 8K and 37.1



Crimes	Central	Isle of Wight	North & East	Portsmouth	Southampton	Western	Force
YTD Crimes	261	90	213	212	254	165	1195
YTD Target	239	81	194	210	274	179	1178
YTD 09/10 Crimes	224	110	198	224	265	174	1195
This month	261	90	213	212	254	165	1195
% change from 09/10	16.52%	-18.18%	7.58%	-5.36%	-4.15%	-5.17%	0.00%
MSG position	13 of 15	11 of 15	12 of 15	14 of 15	12 of 15	8 of 15	8 of 8
OCU Actual	1.16	1.61	1.23	3.35	3.32	1.21	1.81
MSG average	1.2	1.58	1.1	2.16	2.39	1.23	1.38



Detections	Central	Isle of Wight	North & East	Portsmouth	Southampton	Western	Force
YTD Detection Rate	40.23%	42.22%	36.15%	31.13%	29.92%	39.39%	35.73%
This month	40.23%	42.22%	36.15%	31.13%	29.92%	39.39%	35.73%
YTD 09/10 Detections	34.38%	35.45%	28.79%	24.11%	30.94%	39.08%	31.55%
MSG position	12 of 15	7 of 15	12 of 15	11 of 15	8 of 15	7 of 15	6 of 8
OCU Actual	36.89%	43.52%	36.67%	34.44%	35.27%	41.76%	37.20%
MSG average	41.22%	43.39%	41.59%	36.44%	36.47%	40.18%	41.71%

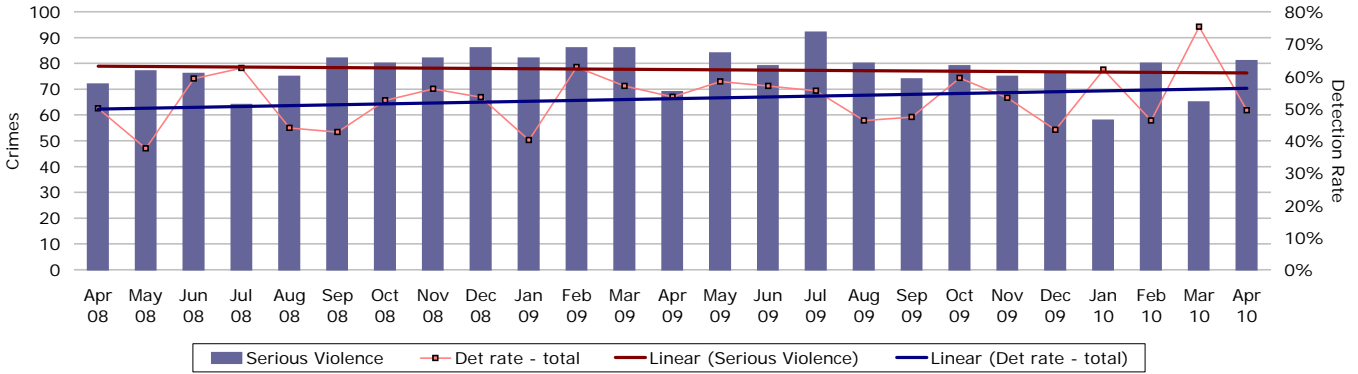


Force target areas for protecting our communities

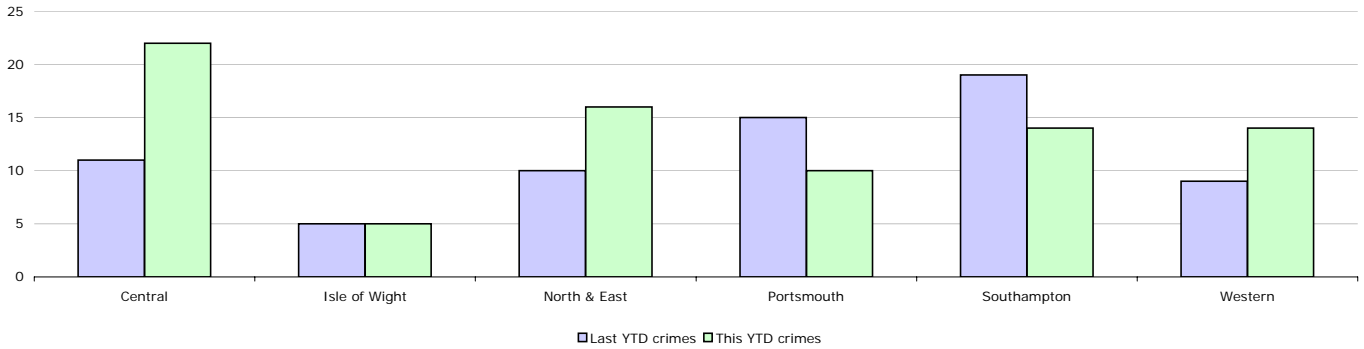
Serious violent crime

SPI 5.1 Force target

Serious violent crime consists of crimsec codes 1, 2, 4.1-4.4, 4.6, 4.8, 5A, 5B, 5C, 8F, 8H and 37.1

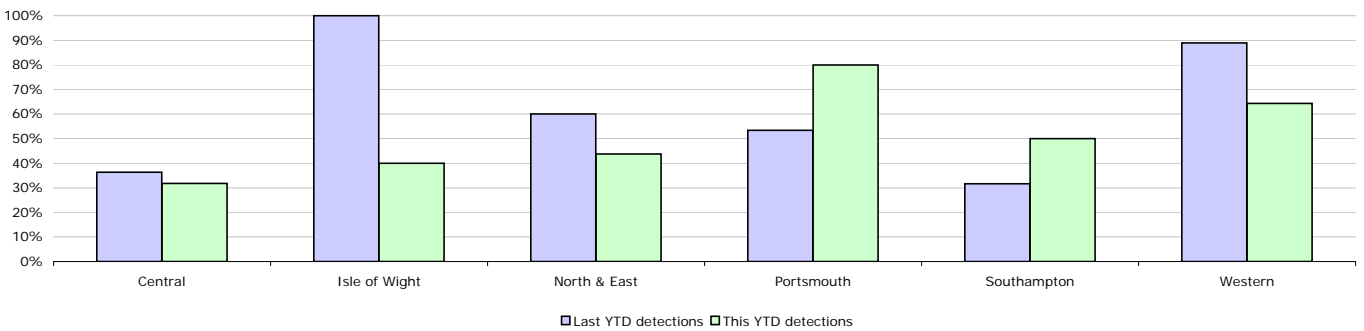


Crimes	Central	Isle of Wight	North & East	Portsmouth	Southampton	Western	Force
YTD Crimes	22	5	16	10	14	14	81
YTD 09/10 Crimes	11	5	10	15	19	9	69
This month	22	5	16	10	14	14	81
% change from 09/10	100.00%	0.00%	60.00%	-33.33%	-26.32%	55.56%	17.39%
MSG position	8 of 15	7 of 15	11 of 15	7 of 15	5 of 15	13 of 15	6 of 8
MSG Actual	0.077	0.107	0.085	0.195	0.192	0.097	0.113
MSG average	0.09	0.114	0.073	0.254	0.268	0.077	0.107



Detections	Central	Isle of Wight	North & East	Portsmouth	Southampton	Western	Force
YTD Detection Rate	31.82%	40.00%	43.75%	80.00%	50.00%	64.29%	49.38%
This month	31.82%	40.00%	43.75%	80.00%	50.00%	64.29%	49.38%
YTD 09/10 Detections	36.36%	100.00%	60.00%	53.33%	31.58%	88.89%	53.62%
MSG position	3 of 15	7 of 15	6 of 15	6 of 15	3 of 15	9 of 15	3 of 8
MSG Actual	63.70%	52.11%	58.28%	43.37%	50.22%	57.64%	53.86%
MSG average	56.88%	52.49%	56.70%	41.94%	43.48%	59.64%	48.04%

Note: Detections refer to Sanction Detections ONLY

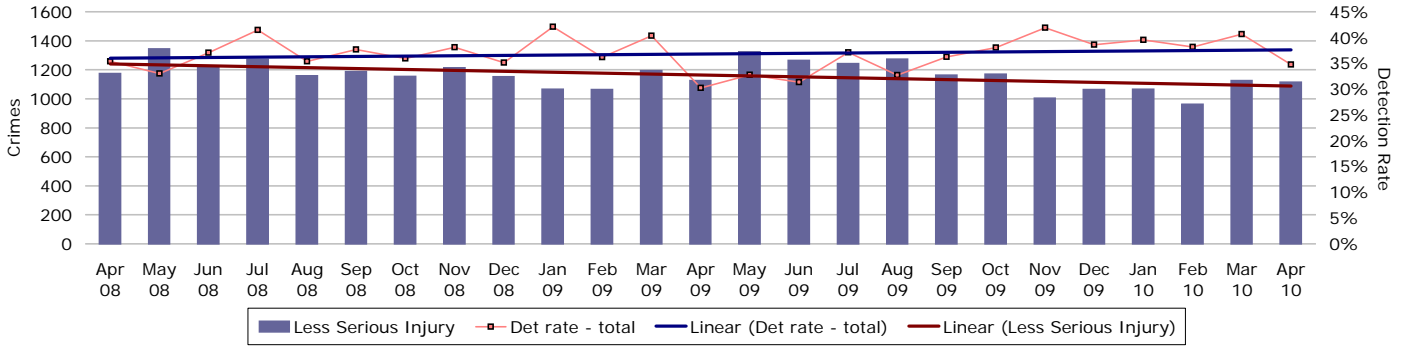


Force target areas for protecting our communities

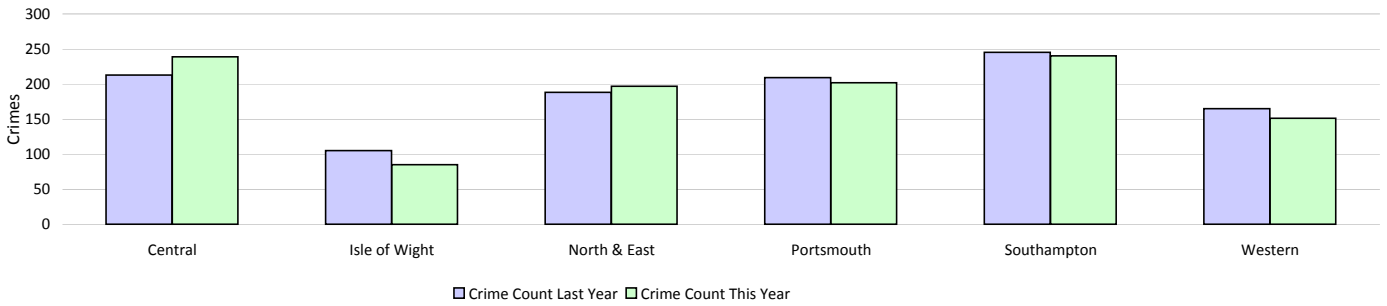
Assault with less serious injury

SPI 5.3 Force target

Assault with less serious injury consists of crimsec codes 8G and 8J

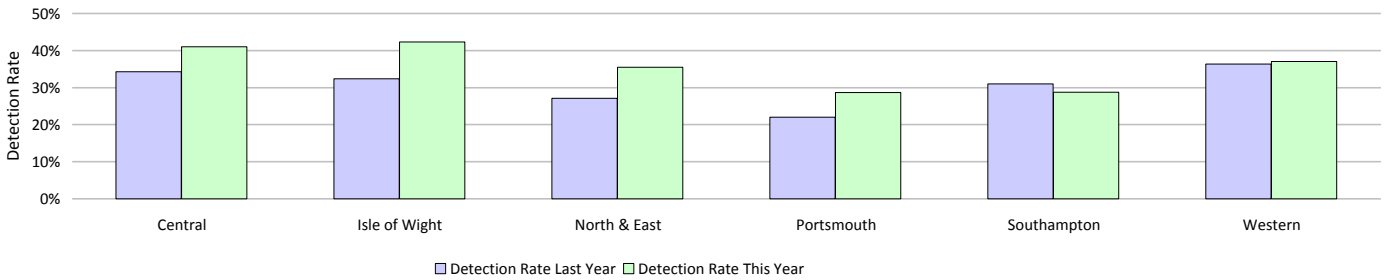


Crimes	Central	Isle of Wight	North & East	Portsmouth	Southampton	Western	Force
YTD Crimes	239	85	197	202	240	151	1114
YTD 09/10 Crimes	213	105	188	209	245	165	1125
This month	239	85	197	202	240	151	1114
% change from 09/10	12.21%	-19.05%	4.79%	-3.35%	-2.04%	-8.48%	-0.98%
MSG position	13 of 15	7 of 15	11 of 15	14 of 15	13 of 15	9 of 15	8 of 8
OCU Actual	1.474	1.291	1.119	3.131	2.993	1.125	1.67
MSG average	1.144	1.458	1.029	1.902	2.08	1.15	1.282



Detections	Central	Isle of Wight	North & East	Portsmouth	Southampton	Western	Force
YTD Detection Rate	41.00%	42.35%	35.53%	28.71%	28.75%	37.09%	34.74%
This month	41.00%	42.35%	35.53%	28.71%	28.75%	37.09%	34.74%
YTD 09/10 Detections	34.27%	32.38%	27.13%	22.01%	31.02%	36.36%	30.22%
MSG position	13 of 15	8 of 15	11 of 15	11 of 15	7 of 15	6 of 15	6 of 8
OCU Actual	33.87%	43.03%	34.97%	33.63%	34.79%	41.71%	36.00%
MSG average	40.02%	42.98%	40.68%	35.94%	35.38%	38.88%	41.30%

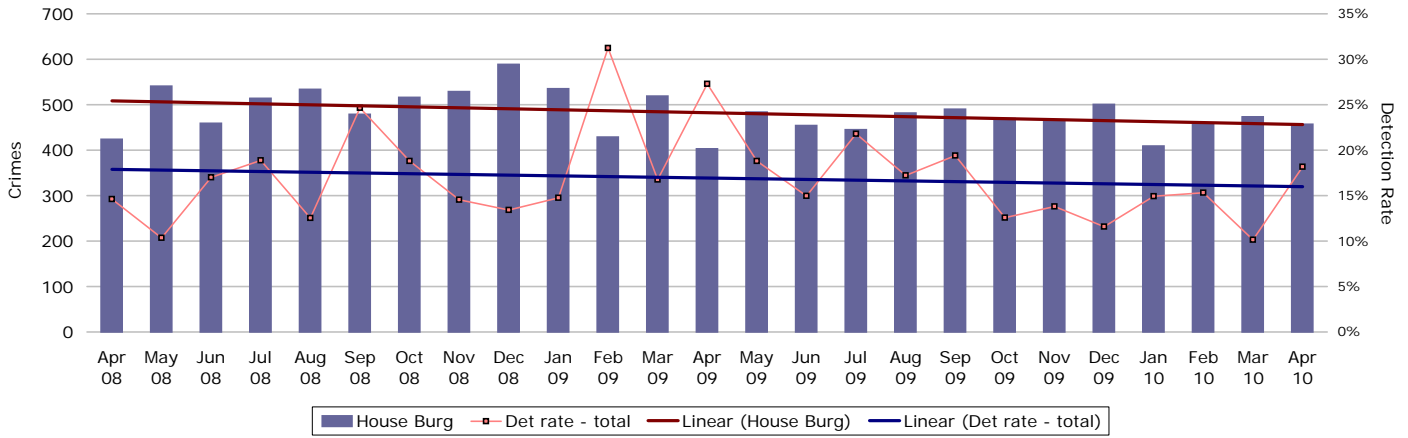
Note: Detections refer to Sanction Detections ONLY



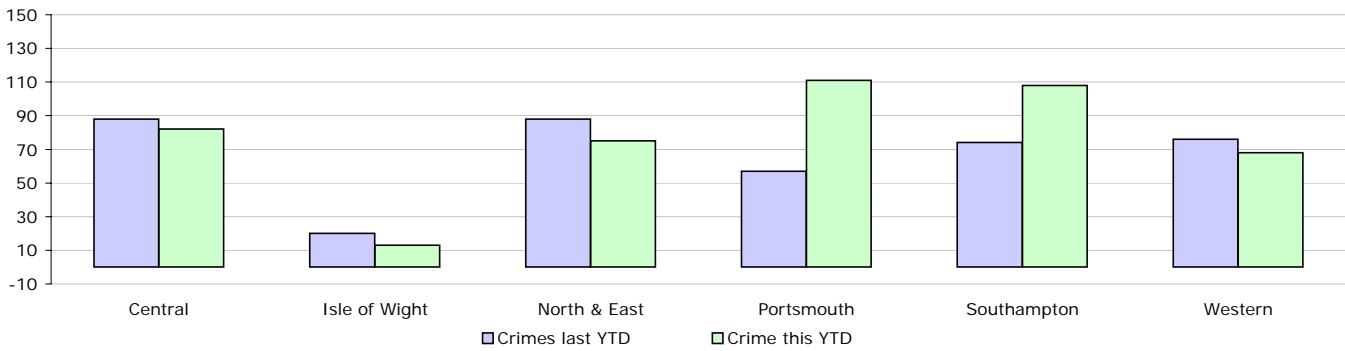
Force target areas for protecting our communities

Reduction in Dwelling Burglary

SPI 5.2 Force target



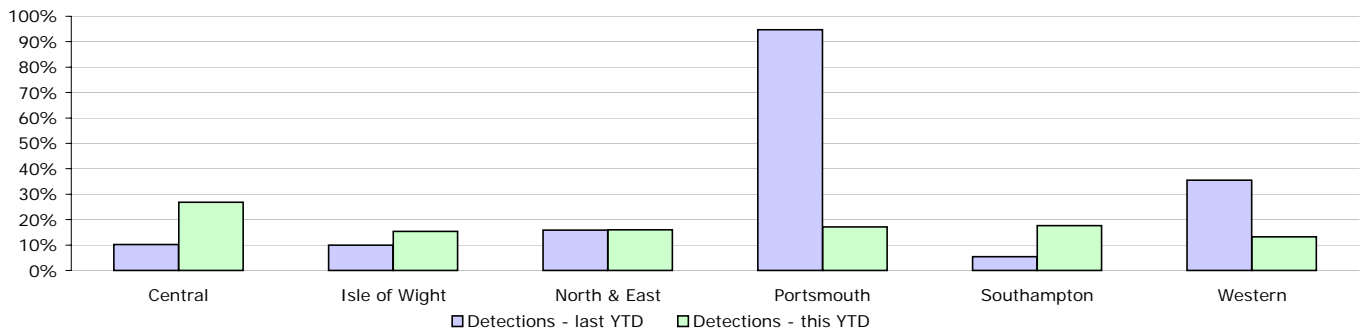
Crimes	Central	Isle of Wight	North & East	Portsmouth	Southampton	Western	Force
YTD Crimes	82	13	75	111	108	68	457
YTD Target	86	21	92	81	86	75	439
YTD 09/10 Crimes	88	20	88	57	74	76	403
This month	82	13	75	111	108	68	457
% change from 09/10	-6.82%	-35.00%	-14.77%	94.74%	45.95%	-10.53%	13.40%
MSG position	4 of 15	3 of 15	8 of 15	6 of 15	4 of 15	3 of 15	2 of 8
OCU Actual	1.334	0.816	1.693	4.267	2.523	1.161	1.709
MSG average	2.11	1.557	1.928	3.358	3.669	1.602	2.423



Detections

Target >15%	Central	Isle of Wight	North & East	Portsmouth	Southampton	Western	Force
YTD Detection Rate	26.83%	15.38%	16.00%	17.12%	17.59%	13.24%	18.16%
This month	26.83%	15.38%	16.00%	17.12%	17.59%	13.24%	18.16%
YTD 09/10 Detections	10.23%	10.00%	15.91%	94.74%	5.41%	35.53%	27.30%
MSG position	11 of 15	11 of 15	13 of 15	3 of 15	7 of 15	5 of 15	5 of 8
OCU Actual	13.94%	15.45%	12.54%	14.15%	16.84%	21.01%	16.36%
MSG average	16.65%	17.55%	17.65%	19.02%	17.50%	17.45%	16.47%

Note: Detections refer to Sanction Detections ONLY



Force target areas for making the most of our resources

	Target	Actual	Central	Isle of Wight	North & East	Portsmouth	Southampton	Western
BME recruitment	5% of all recruits	Not applicable	Not applicable	Not applicable	Not applicable	Not applicable	Not applicable	Not applicable

	Target	Actual	Central	Isle of Wight	North & East	Portsmouth	Southampton	Western
Staff confidence in the organisation	To be determined from initial survey	Not applicable	Not applicable	Not applicable	Not applicable	Not applicable	Not applicable	Not applicable
	OCU specific targets	Not applicable						

Minority ethnic officer recruitment

SPI 3.1

	All recruits	Minority ethnic recruits	%
YTD April 2010	0	0	n/a

Female officer representation

SPI 3.2

	Male strength	Female strength	%
YTD April 2010	2658.1	1037.5	28.07%

Monitoring information for an active presence in every neighbourhood

Safer Neighbourhood Teams (SNT)

Policing pledge 3

Abstractions	Central	Isle of Wight	North & East	Portsmouth	Southampton	Western	Force
May 2009	3.33%	2.95%	2.98%	3.01%	1.88%	2.83%	2.86%
June 2009	3.16%	1.15%	2.54%	4.62%	2.77%	3.40%	3.05%
July 2009	3.44%	2.32%	4.02%	4.92%	3.24%	6.46%	4.16%
August 2009	6.66%	16.17%	11.25%	3.13%	2.08%	3.37%	6.40%
September 2009	3.99%	4.03%	4.41%	1.00%	3.16%	3.64%	3.48%
October 2009	2.74%	1.10%	4.80%	0.86%	1.43%	2.19%	2.44%
November 2009	2.27%	0.50%	3.71%	0.36%	2.53%	1.84%	2.12%
December 2009	5.48%	4.33%	4.13%	0.65%	2.09%	1.51%	3.18%
January 2010	1.76%	1.76%	2.58%	0.37%	1.70%	2.78%	1.95%
February 2010	1.40%	1.13%	2.33%	1.87%	2.03%	2.49%	1.94%
March 2010	1.91%	4.47%	1.98%	1.61%	5.00%	2.90%	2.82%
April 2010	0.87%	1.84%	2.49%	3.22%	1.82%	2.56%	2.05%

Target = NPT visible & accessible at least 80% of time (maximum 5% abstractions)

In August 2009 a review of Abstraction data was undertaken to ensure a consistent approach was used across the Force. Prior to this data individual OCUs used slightly differing methodology therefore it is not possible to compare the data for April - July with data from August onwards, or to compare the data for individual OCU's with one another prior to August.

Safer neighbourhood team personnel data

	Inspector	Sergeant	Constable	PCSO	Total
Central	10	25	86	78	199
IOW	1	9	27	28	65
North and East	11	16	80	68	175
Portsmouth	4	9	48	50	111
Southampton	5	14	60	59	138
Western	7	18	78	65	168
Total	38	91	379	348	856

SNT strength by OCU - Police

	Central	Isle of Wight	North & East	Portsmouth	Southampton	Western
Strength	112.4	34.9	102.2	58.5	76.7	98.6

SNT establishment and strength by OCU - PCSOs

	Central	Isle of Wight	North & East	Portsmouth	Southampton	Western
Establishment	74	28	67	50	59	59
Strength	78	27.12	67.2	48.91	58.69	63.61
Vacancies	-4	0.88	-0.2	1.09	0.31	-4.61

Note: Personnel Planning are no longer able to provide 'length of service' information due to the implementation of the new organisation structure into Delphi. This has meant that all Staff and Police Officers have a position start date of 8 July 2009

Monitoring information for catching criminals and managing offenders

Serious sexual offences - detections

Apr-09	Central	Isle of Wight	North & East	Portsmouth	Southampton	Western	Force
Number of Crimes	16	8	24	17	25	17	107
Number of Detections	3	5	5	0	10	3	26
Detection Rate	18.75%	62.50%	20.83%	0.00%	40.00%	17.65%	24.30%
Number of No Crimes	2	0	1	2	2	3	10

Apr-10	Central	Isle of Wight	North & East	Portsmouth	Southampton	Western	Force
Number of Crimes	32	6	21	19	33	19	131
Number of Detections	7	1	6	5	14	2	35
Detection Rate	21.88%	16.67%	28.57%	26.32%	42.42%	10.53%	26.72%
Number of No Crimes	9	0	0	0	2	0	11

Comparisons	Central	Isle of Wight	North & East	Portsmouth	Southampton	Western	Force
Number of Crimes % change	100%	-25%	-13%	12%	32%	12%	22.43%
Number of Detections % change	133%	-80%	20%	n/a	40%	-33%	34.62%
Detection Rate Change	3%	-46%	8%	26%	2%	-7%	2.42%

Class A drugs sanction detections

	Central	Isle of Wight	North & East	Portsmouth	Southampton	Western	Force
YTD April 2010	2	4	9	1	4	4	24
April 2010	2	4	9	1	4	4	24
YTD April 2009	2	0	4	2	2	14	24
April 2009	2	0	4	2	2	14	24

Drug seizures information

	Central	Isle of Wight	North & East	Portsmouth	Southampton	Western	Force
YTD March 2010	1099	1370	967	783	1164	611	5994
YTD March 2009	1054	988	699	745	758	449	4693
% change from 08/09	4.3%	38.7%	38.3%	5.1%	53.6%	36.1%	27.7%

Note: This data is produced one month in arrears

Bail rates

	Central	Isle of Wight	North & East	Portsmouth	Southampton	Western	Force
People Arrested	904	390	798	732	761	653	4238
No of arrests	1349	500	1194	997	1055	923	6018
All Disposals	1965	738	1864	1458	1615	1371	9011
% Bailed on First	35%	48%	35%	29%	32%	32%	not available

First time entrants into the criminal justice system

	FY 2008 Q1	FY 2008 Q2	FY 2008 Q3	FY 2008 Q4	Rate of FTES per 100,000 youth	National rank	MSG Rank	FYTD Total
	Jun-08	Sep-08	Dec-08	Mar-09				
Force	674	718	730	681	1,560.10	26	6	2,803
England and Wales	22,591	20,372	18,812	17,958	1,495.24			79,733

Monitoring information for catching criminals and managing offenders

Detections by disposal type - Volume

	Central	Isle of Wight	North & East	Portsmouth	Southampton	Western	Force
Charge	441	118	398	329	465	312	2063
Caution	87	32	76	51	52	71	369
Conditional Caution	50	12	54	9	20	40	185
Reprimand/warning	5	3	4	10	3	2	27
TIC	27	0	6	9	20	8	70
PND	38	10	48	61	34	42	233
Cannabis warning	27	17	38	19	20	23	144
	675	192	624	488	614	498	3091

Detections by disposal type - Proportion

	Central	Isle of Wight	North & East	Portsmouth	Southampton	Western	Force
Charge	65.33%	61.46%	63.78%	67.42%	75.73%	62.65%	66.74%
Caution	12.89%	16.67%	12.18%	10.45%	8.47%	14.26%	11.94%
Conditional Caution	7.41%	6.25%	8.65%	1.84%	3.26%	8.03%	5.99%
Reprimand/warning	0.74%	1.56%	0.64%	2.05%	0.49%	0.40%	0.87%
TIC	4.00%	0.00%	0.96%	1.84%	3.26%	1.61%	2.26%
PND	5.63%	5.21%	7.69%	12.50%	5.54%	8.43%	7.54%
Cannabis warning	4.00%	8.85%	6.09%	3.89%	3.26%	4.62%	4.66%
	100.00%	100.00%	100.00%	100.00%	100.00%	100.00%	100.00%

Forensic results for Vehicle Crime

DNA - Theft of a motor vehicle

	Central	Isle of Wight	North & East	Portsmouth	Southampton	Western
March YTD 2009/10	3	1	0	3	6	1
March YTD 2008/09	2	0	0	10	1	2
Difference	1	1	0	-7	5	-1

Fingerprint Detections - Theft of a motor vehicle

	Central	Isle of Wight	North & East	Portsmouth	Southampton	Western
March YTD 2009/10	20	10	16	20	10	2
March YTD 2008/09	11	3	5	16	11	4
Difference	9	7	11	4	-1	-2

DNA - Theft from a motor vehicle

	Central	Isle of Wight	North & East	Portsmouth	Southampton	Western
March YTD 2009/10	2	2	6	8	4	10
March YTD 2008/09	13	7	6	12	3	5
Difference	-11	-5	0	-4	1	5

Fingerprint Detections - Theft from a motor vehicle

	Central	Isle of Wight	North & East	Portsmouth	Southampton	Western
March YTD 2009/10	20	4	10	22	13	10
March YTD 2008/09	11	5	11	12	8	2
Difference	9	-1	-1	10	5	8

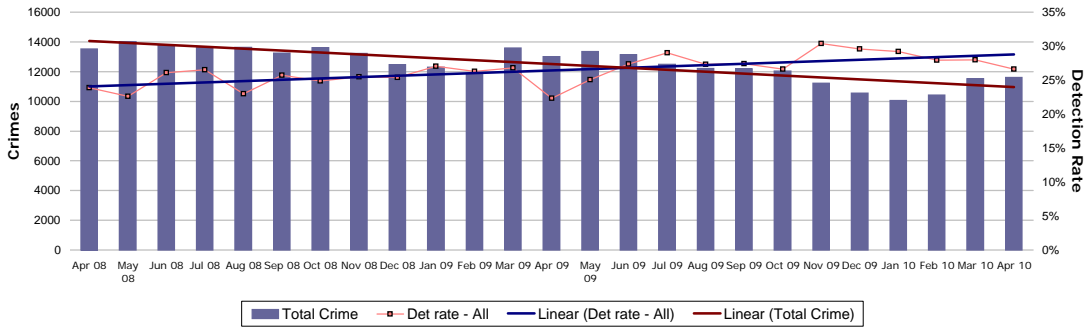
Outstanding suspects - suspects that are shown on RMS for offences up to and including 30/01/2010

	Central	Isle of Wight	North & East	Portsmouth	Southampton	Western	Force
Crime count	75	27	79	88	104	102	475
Total susps	84	27	90	95	121	113	530

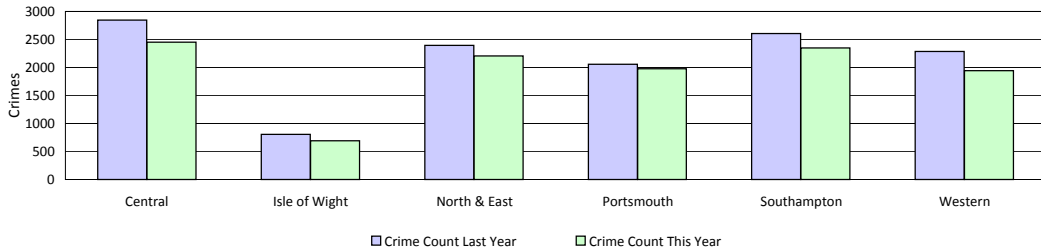
Monitoring information for protecting our communities

All crime

Force Target

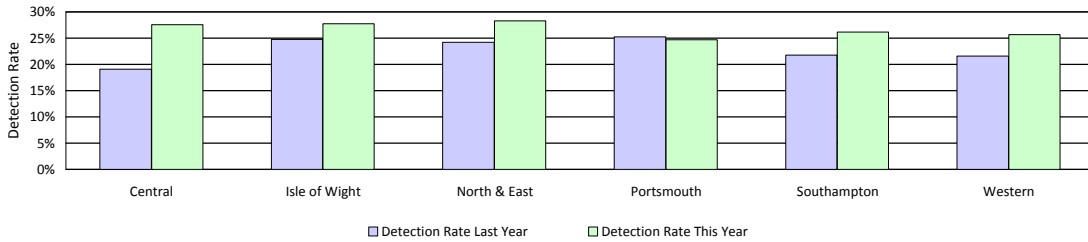


Crimes	Central	Isle of Wight	North & East	Portsmouth	Southampton	Western	Force
YTD Crimes	2450	692	2206	1976	2348	1942	11614
YTD 09/10 Crimes	2847	808	2396	2058	2605	2283	12997
This month	2450	692	2206	1976	2348	1942	11614
% change from 09/10	-13.94%	-14.36%	-7.93%	-3.98%	-9.87%	-14.94%	-10.64%
MSG position	10 of 15	3 of 15	10 of 15	12 of 15	13 of 15	11 of 15	6 of 8
OCU actual	14.259	12.315	14.06	25.424	27.902	13.329	16.78
MSG average	13.829	14.017	13.37	21.369	22.787	13.04	15.694



Detections	Central	Isle of Wight	North & East	Portsmouth	Southampton	Western	Total
YTD Detection Rate	27.55%	27.75%	28.29%	24.70%	26.15%	25.64%	26.61%
This month	27.55%	27.75%	28.29%	24.70%	26.15%	25.64%	26.61%
YTD 09/10 Detections	19.11%	24.75%	24.21%	25.27%	21.77%	21.59%	22.34%
Detection Targets	25.00%	30.00%	25.50%	25.50%	25.00%	25.00%	25.00%
MSG position	11 of 15	4 of 15	9 of 15	2 of 15	6 of 15	9 of 15	5 of 8
OCU actual	24.54%	34.54%	27.74%	28.91%	26.85%	25.57%	27.13%
MSG average	27.81%	29.70%	28.71%	25.40%	26.60%	26.82%	28.72%

Note: Detections refer to Sanction Detections ONLY



Monitoring information for protecting our communities

Prolific and other Priority Offenders (PPOs) convictions

Prolific and other Priority Offenders (PPOs) convictions

Number of convictions recorded against identified, prolific and other priority offenders (PPOs)

	Apr-Jun 09	Jul-Sept 09	Oct-Dec 09	Jan 2010	Feb 2010	YTD
Persistent Young Offenders	260	151	67	11	8	497
Priority Prolific Offenders	94	91	64	21	22	292
Persistent Priority Prolific Young Off's	14	7	1	1	1	24
Young Offenders	555	588	614	186	209	2152

FIU1 submissions

	Central	Isle of Wight	North & East	Portsmouth	Southampton	Western	Force
YTD April 2010	8	14	17	10	14	13	76
Number of eligible detections	311	89	352	262	291	225	1530
% submission rate	3%	16%	5%	4%	5%	6%	5%

	Central	Isle of Wight	North & East	Portsmouth	Southampton	Western	Force
YTD April 2009	22	21	13	15	13	18	102
Number of eligible detections	270	82	299	303	262	241	1457
% submission rate	8%	26%	4%	5%	5%	7%	7%

	Central	Isle of Wight	North & East	Portsmouth	Southampton	Western	Force
April 2010	8	14	17	10	14	13	76
Number of eligible detections	311	89	352	262	291	225	1530
% submission rate	3%	16%	5%	4%	5%	6%	5%

	Central	Isle of Wight	North & East	Portsmouth	Southampton	Western	Force
April 2009	22	21	13	15	13	18	102
Number of eligible detections	270	82	299	303	262	241	1457
% submission rate	8%	26%	4%	5%	5%	7%	7%

Eligible crimes are those covered by Proceeds of Crime Act (POCA)

Actual Cash Seizure Value (Forfeited) by month

	Central	Isle of Wight	North & East	Portsmouth	Southampton	Western	Force
Apr-10	£0.00	£0.00	£1,745.00	£152,477.62	£60,000.00	£0.00	£214,222.62

Gun crime rate

	Central	Isle of Wight	North & East	Portsmouth	Southampton	Western	Force	MSG position 01 01 09 - 31 12 09
YTD April 2010	4	0	3	1	1	2	11	4
YTD April 2009	5	0	1	3	1	0	10	
% change from 08/	-20.0%	n/a	200.0%	-66.7%	0.0%	n/a	10.0%	

SPI 5.5

Gun crime figures published reflect the APACS technical definition which includes "where the victim is convinced of the presence of a firearm, even if it is concealed and there is evidence of the suspect's intention to create this impression".

Knife crime rate

	Central	Isle of Wight	North & East	Portsmouth	Southampton	Western	Force	MSG position 01 10 08 - 30 09 09
YTD April 2010	13	3	10	9	7	5	47	3
YTD April 2009	7	2	8	9	15	12	53	
% change from 08/	85.7%	50.0%	25.0%	0.0%	-53.3%	-58.3%	-11.3%	

SPI 5.6

Knife = knife or other sharp instrument (including broken glass/bottles) piercing the skin or, for threats and attempts, instruments normally capable of piercing the skin. The measure for counting broken glass/bottles has changed for 09-10 with less occurrences being counted by the Home Office.

Knife crime figures published reflect the APACS technical definition which includes "where the victim is convinced of the presence of a knife, even if it is concealed and there is evidence of the suspect's intention to create this impression".

Murder offences

	Central	Isle of Wight	North & East	Portsmouth	Southampton	Western	Force
YTD April 2010	0	0	0	0	0	1	1
YTD Domestic Murders 2010/11	0	0	0	0	0	0	0
YTD April 2009	0	0	0	0	0	0	0
YTD Domestic Murders 2009/10	0	0	0	0	0	0	0

SPI 5.4

Note: The definition of Domestic Murder used above is now in line with the 2009/10 APACS Guidance (in previous months, the government and ACPO definition was used - this is located on pg 21 of the profile). In APACS a domestic homicide is where the relationship between victim and suspect was either: Spouse, Common law spouse or cohabiting partner, Boyfriend/Girlfriend, Ex-boyfriend/girlfriend or Adulterous relationship.

Monitoring information for protecting our communities

MAPPA Visits

Number of timely RSO visits target

% of RSO visits conducted within the minimum visit guidelines (plus 2 weeks)

	Central	Isle of Wight	North & East	Portsmouth	Southampton	Western
Jan-Mar	no data	100%	83%	no data	94%	94%

Timeliness of level 1 reviews target

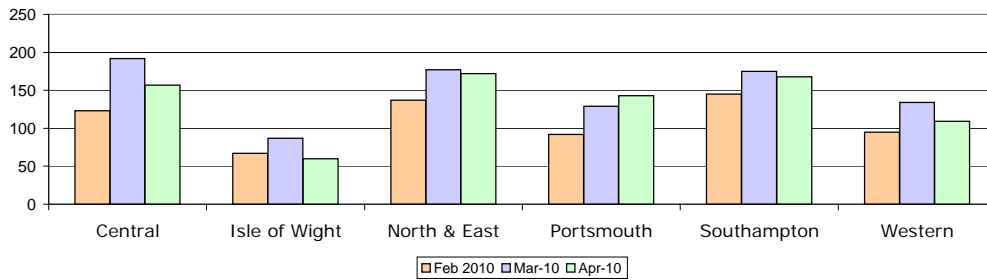
% of level 1 cases reviewed within timescales (plus 2 weeks)

	Central	Isle of Wight	North & East	Portsmouth	Southampton	Western
Jan-Mar	0%	100%	98%	0%	100%	85%

Missing Persons

Breakdown by OCU

	Central	Isle of Wight	North & East	Portsmouth	Southampton	Western	Force
April 2010	157	60	172	143	168	109	809
March 2010	192	87	177	129	175	134	894
Feb 2010	123	67	137	92	145	95	659



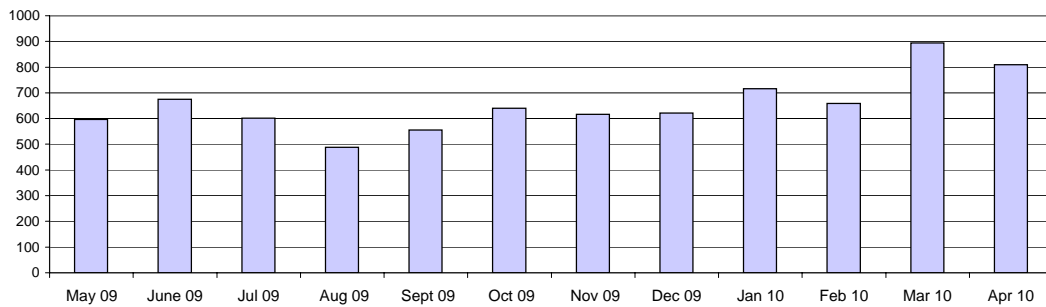
Total missing per month

Month	Total missing
May 2009	596
June 2009	675
July 2009	602
Aug 2009	488
Sept 2009	556
Oct 2009	640
Nov 2009	616
Dec 2009	621
Jan 2010	716
Feb 2010	659
Mar 2010	894
Apr 2010	809

Amount of time missing for

Less than a day	688
1 day	62
2 days	25
3 days	19
4 days	3
5-10 days	5
10+ days	6
30+ days	1

Month	Total missing	April 2009	Total missing	Difference	% change
Apr 2010	809	April 2009	538	271	50.37%



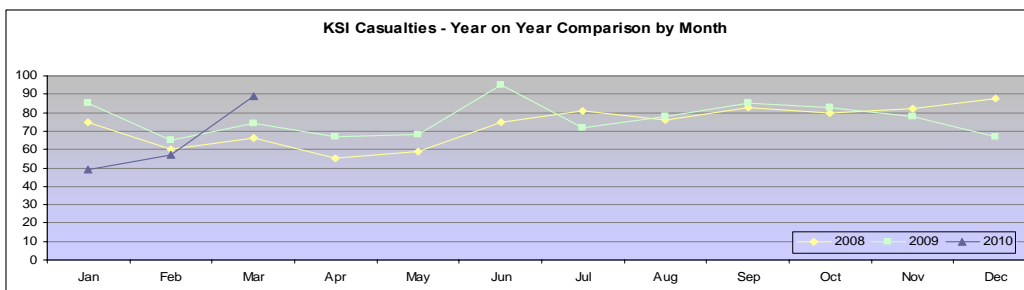
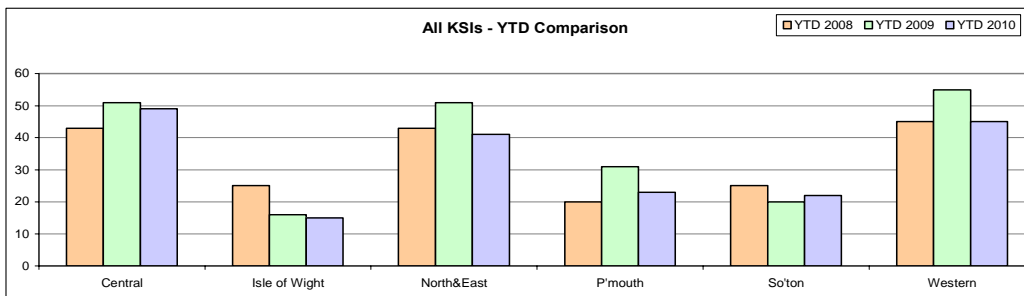
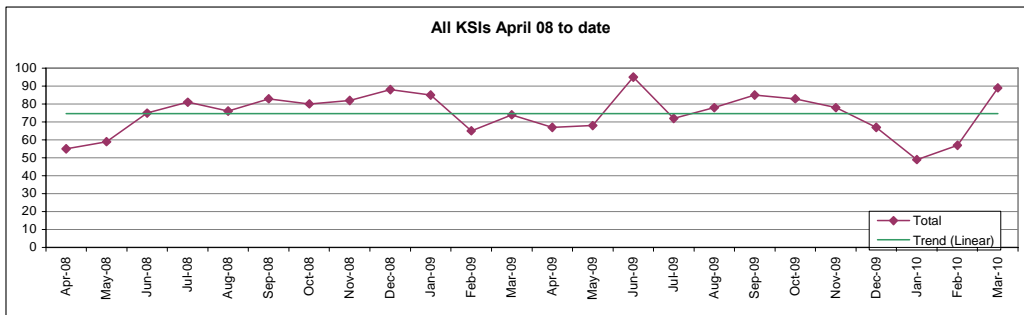
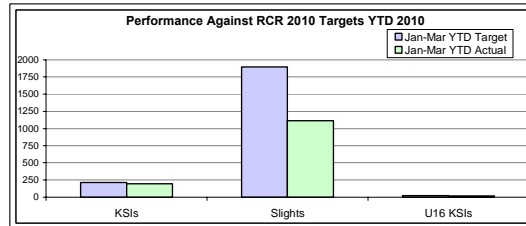
Monitoring information for protecting our communities

Casualty reduction

	Central	Isle of Wight	North & East	Portsmouth	Southampton	Western	Force
YTD 2010	49	15	41	23	22	45	195
YTD 2009	51	16	51	31	20	55	224
% change from 09	-3.92%	-6.25%	-19.61%	-25.81%	10.00%	-18.18%	-12.95%
March 2010	28	2	19	9	9	22	89
March 2009	15	7	11	12	11	18	74
% change from 2009	86.67%	-71.43%	72.73%	-25.00%	-18.18%	22.22%	20.27%



Performance Against RCR 2010 Targets			
	KSIs	Slight	U16 KSIs
Mar-10			
Year Target	862	7584	86
Monthly Target	71.8	632.0	7.2
Jan-Mar YTD Target	215.5	1896.0	21.5
March Actual	89	452	7
Jan-Mar YTD Actual	195	1112	18
YTD Actual against Target	-9.5%	-41.4%	-16.3%



Stop & Search

Breakdown of Stop & Search by OCU by Visual Ethnicity - Provisional Data

April	Central	Isle of Wight	North & East	Portsmouth	Southampton	Western	Other	Force	%
White	177	79	355	207	287	174	3	1282	87.3%
Black	4	1	32	11	37	2	0	87	5.9%
Asian	1	1	28	4	22	4	0	60	4.1%
Other	1	0	15	2	3	2	0	23	1.6%
Unknown	3	0	6	2	4	1	0	16	1.1%
Total	186	81	436	226	353	183	3	1468	

April - % splits	Central	Isle of Wight	North & East	Portsmouth	Southampton	Western	Other	Force
White	95.2%	97.5%	81.4%	91.6%	81.3%	95.1%	100.0%	87.3%
Black	2.2%	1.2%	7.3%	4.9%	10.5%	1.1%	0.0%	5.9%
Asian	0.5%	1.2%	6.4%	1.8%	6.2%	2.2%	0.0%	4.1%
Other	0.5%	0.0%	3.4%	0.9%	0.8%	1.1%	0.0%	1.6%
Unknown	1.6%	0.0%	1.4%	0.9%	1.1%	0.5%	0.0%	1.1%

No Further Action Rates as a Result of Stop and Search by Visual Ethnicity - Provisional Data

April	% NFA Rate
White	79.7%
Black	75.9%
Asian	81.7%
Other	78.3%
Unknown	75.0%
Total	79.5%

* These figures relate to Stop & Search powers under the: Police and Criminal Evidence Act 1984, the Criminal Justice & Public Order Act 1994, the Terrorism Act 2000 and other legislative provisions.

* Note: these figures relate to a single month's worth of data and may be influenced by any specific operations being run during this period. Also, due to being a single month's worth of data, some numbers are very small therefore caution should be applied when drawing conclusions. The figures are pulled from a live database, therefore the data is subject to change as additional tickets are scanned into the system.

* 'Other' OCU are tickets which are not logged against a recognised OCU code.

Analysis

Scanning time

Of 1468 Stop & Search tickets - 111 took over 2 weeks to be registered, therefore this is not a complete picture for April. Last year 5.8% of tickets took in excess of 31 days to be registered. Based on data pulled from the system early April.

Black Stop & Searches for this period

N&E =32 28 - Drugs; 4 - PACE

Of 28 Drugs stops - 12 Non-residents (9 from London); 2 Unknown; 14 Residents

Of 28 Drugs stops - 8 are logged as Operation Riddings (10 of 244 stops on White logged as this op)

Of 28 Drugs stops - 21 were NFA'd

Soton =37 25 - Drugs; 12 - PACE

Of 25 Drugs stops - 21 Residents; 3 Unknown; 1 Non-Resident

Of 12 PACE stops - All Residents

1 Drugs stop & 1 PACE stop have operation name logged on ticket

Of 25 Drugs stops - 19 were NFA'd

Of 12 PACE stops - 9 were NFA'd

Number of stops being carried out by OCUs

Use of the Stop & Search powers varies across OCUs.

	Central	Isle of Wight	North & East	Portsmouth	Southampton	Western	Other
Stops	12.67%	5.52%	29.70%	15.40%	24.05%	12.47%	0.20%
Population	22.59%	7.56%	24.41%	10.71%	12.53%	22.19%	
Difference	-9.92%	-2.04%	5.29%	4.68%	11.52%	-9.73%	

Data Quality

Some caution should be attached to this work, resident/non-resident status has been based on the address information which has been scanned in. Where there is uncertainty around the address information or NFA they logged as Unknown

This system relies on Intelligent Character Recognition which is not 100% accurate, it is reliant on officers writing very clearly on the ticket. This data has not been quality checked, it is returning the information which is in the system as it is.

Special Constabulary Balanced Scorecard - March 2010

		Central	Isle of Wight	North & East	Portsmouth	Southampton	Western	Force	Average
Total No. of Officers		90	20	90	68	67	74	409	
Customer	Total number of operational hours	1312	401	1160	1342	871	1036	6122	n/a
	Number of operational hours per 1000 population	3.18	2.90	2.63	7.12	4.52	2.91	n/a	4
Finance	Average number of operational hours per officer	14.58	20.05	12.89	19.73	13.00	14.00	n/a	16
People	Leavers joining regular service or transferring to another force	1.00	0.00	0.00	0.00	1.00	0.00	2.00	0
	Leavers not joining regular service or transferring to another force	2.00	0.00	0.00	0.00	3.00	0.00	5.00	1
	Number of officers completing at least 16 hours of duty during the month	41.00	9.00	39.00	39.00	33.00	36.00	197.00	n/a
Number of joiners		9	0	15	6	1	5	36	

Gender	Central	Isle of Wight	North & East	Portsmouth	Southampton	Western	Force
Male	59	15	69	44	48	54	289
Female	31	5	21	24	19	20	120

Ethnicity	Central	Isle of Wight	North & East	Portsmouth	Southampton	Western	Force
White	89	20	87	66	66	73	401
Mixed	1	0	0	0	0	0	1
Black or Black British	0	0	2	0	1	0	3
Asian or Asian British	0	0	1	1	0	0	2
Chinese or other	0	0	0	1	0	1	2
Not stated	0	0	0	0	0	0	0

Age	Central	Isle of Wight	North & East	Portsmouth	Southampton	Western	Force
25 and under	34	4	29	40	23	34	164
26 to 40	34	6	34	20	38	26	158
41 to 55	18	8	23	8	3	13	73
Over 55	4	2	4	0	3	1	14

Length of service	Central	Isle of Wight	North & East	Portsmouth	Southampton	Western	Force
up to 1yr	31	5	20	24	19	17	116
1yr to 5yrs	35	10	43	37	43	39	207
5 to 10yrs	11	1	8	4	4	5	33
10 to 15yrs	7	2	12	3	0	5	29
15 to 20yrs	3	1	6	0	0	7	17
20 to 25yrs	1	1	0	0	0	0	2
25yrs and over	2	0	1	0	1	1	5