



Performance Summary March 2009

Summary

This document contains a strategic overview of the Constabulary's performance. It has a variety of performance measures within it, but for the first time our performance is aligned to the Force Control Strategy.

It is a headline document that will enable our customers, both internally and externally, to easily assess performance in key domains. Additionally with the introduction of the national performance framework called the Assessment of Police and Community Safety (APACS), it is crucial that we become focused and more accountable.

At the front of the document there are several matrices that reflect our performance against our targets, firstly year to date and secondly relevant for that particular month.

Performance in key areas is then explored in more depth with an indication of where each measure has originated - for example, APACS Statutory Performance Indicator (SPI) or a Force Control Strategy (FCS) measure.

This document is then taken forward by key stakeholders within the organisation to the Force Performance Review Group, where it is used to highlight areas of both best practice and those for development.

This is an evolving document and as such, the content may alter over time and any feedback would be welcomed by the Performance Review Team.

Index

Page

Year to date performance matrix

4-5

Monthly performance matrix

6-7

including notes on matrices terminology

Safer neighbourhoods

8	Overall satisfaction	SPI 1.1	FCS	Consultation & Research Team
8	Being kept informed		FCS	Consultation & Research Team
8	Comparative satisfaction of minority ethnic groups	SPI 1.2		Consultation & Research Team
8	Satisfaction of victims of racist incidents	SPI 1.3		Consultation & Research Team
8	Confidence in local police	SPI 2.3	FCS	iQuanta - Quarterly
8	Understanding community issues		FCS	iQuanta - Quarterly
8	Perception of anti-social behaviour	SPI 4.1		iQuanta - Quarterly
8	Perception of drug use in local area	SPI 4.3	FCS	iQuanta - Quarterly
8	Perception of drunk or rowdy behaviour	SPI 4.2		iQuanta - Quarterly
9	Assault with less serious injury	SPI 5.3	FCS	Business Objects
10	Anti-social use of motor vehicle (NSIR)		FCS	PRT - NSIR Return
10	Anti-social behaviour (NSIR)		FCS	PRT - NSIR Return
11	Criminal damage		FCS	Business Objects

Safeguard people

12	DV incident arrest rate		FCS	Business Objects
12	DV victimisation		FCS	N/A
12	Repeat victims of domestic violence		FCS	Business Objects
12	Domestic violence OBTJ rate		FCS	Criminal Justice Department
12	Hate crime detection rate		FCS	Business Objects
12	Sexual offender reoffending rate		FCS	N/A

Protect our communities

13	Road traffic casualties	SPI 9.1	FCS	8 OCU Performance Team
----	-------------------------	---------	-----	------------------------

Prevent, reduce and detect crime

14	Serious violent crime and sanction detections	SPI 5.1	FCS	Business Objects
15	All crime		FCS	Business Objects
16	Serious acquisitive crime and sanction detections	SPI 5.2	FCS	Business Objects
17	Serious acquisitive crime breakdown			Business Objects
18	Gun crime rate	SPI 5.5		Business Objects and Manual Checking
18	Knife crime rate	SPI 5.6		Business Objects and Manual Checking
18	Serious sexual crime OBTJ rate	SPI 6.4	FCS	Criminal Justice Department
18	Murder offences		FCS	Business Objects
18	Asset recovery	SPI 8.1	FCS	Specialist Investigation Department
18	PPO convictions	SPI 10.1	FCS	Criminal Justice Department
18	Class A drugs sanction detections		FCS	Business Objects
18	Drug intervention measures (DIMs)			Force Intelligence

Organisational management

19	Police officer sickness	SPI 13.1	FCS	PRT - Delphi + Personnel - Staffing Figures
20	Police staff sickness	SPI 13.2	FCS	PRT - Delphi + Personnel - Staffing Figures
21	Overdue PDRs			Personnel
22	Minority ethnic officer recruitment	SPI 3.1		Personnel
22	Female officer representation	SPI 3.2		Personnel
22	NCRS compliance		FCS	Force Incident & Crime Registrar
22	Budget spend		FCS	Finance
22	Efficiency savings		FCS	Finance

Specialist Operations - 7 OCU

23-24	Murder & domestic murder offences (SPI 5.4), CSI attendance, DNA & fingerprint identifications, forensic examinations major incidents, class A drug detections, kidnaps, abductions, blackmails			
-------	---	--	--	--

Specialist Operations - 8 OCU

25	Patrol availability, pre-planned operations, ANPR operations, interventions in support of OCUs & Force Strategy			
----	---	--	--	--

Operational Services

26	Performance highlights relating to Operational Services departments which include Call Management and Personnel & Training			
----	--	--	--	--

Victim focus

27-28	APACs indicators for user satisfaction, Victim Code compliance, victim support status			
-------	---	--	--	--

Restricted data

29

FCS = Force Control Strategy

PRT = Performance Review Team

SPI - Statutory Performance Indicator

Year to date performance matrix

This matrix is based on year to date comparison with 2007/2008 performance

		Target	Actual	
Safer Neighbourhoods	Overall satisfaction (data for rolling 12 months)	>62.0%	64.0%	
	Being kept informed (data for rolling 12 months)	>60.0%	50.0%	
	Confidence in local police	>58.3%	57.9%	
	Understanding community issues	>67.1%	66.3%	
	Perception of drug use in local area	<23.9%	26.2%	
	Assault with less serious injury*	-5.0%	-1.7%	
	OCU specific targets			
	Anti-social use of motor vehicle	-5.0%	-24.1%	
	Anti-social behaviour	-5.0%	-5.8%	
	Reduce criminal damage	-12.0%	-8.9%	
Safer Neighbourhoods - targets achieved			3	
Safeguard people	Domestic violence incident arrest rate	>35.0%	34.0%	
	Repeat victims of domestic violence	-5.0%	9.6%	
	Hate crime detection rate	>45.0%	42.3%	
Safeguard people - targets achieved			0	
Protect our communities	Road traffic casualties	<904	812	
	Protect our communities - targets achieved		1	

Central	Isle of Wight	North & East	Portsmouth	Southampton	Western	Crime	Operations
65.0%	71.0%	63.0%	65.0%	61.0%	64.0%	N/A	
50.0%	57.0%	47.0%	48.0%	49.0%	50.0%	N/A	
Force level target - to exceed MSG average by 5% whilst not declining on current performance							
Force level target - to exceed MSG average by 3.5% whilst not declining on current performance							
Force level target - be under MSG average whilst not declining on current performance							
-4.3%	0.7%	-1.1%	8.4%	-4.2%	-4.7%	N/A	
-5.91%	-4.52%	0.00%	-4.00%	-8.69%	-4.21%	N/A	
-25.3%	-32.3%	-25.2%	-28.8%	-18.3%	-15.7%	N/A	
-9.2%	-7.1%	-1.8%	-7.6%	-1.0%	-9.7%	N/A	
-9.8%	-16.8%	-4.2%	-2.5%	-10.4%	-11.7%	N/A	
3	4	3	3	1	4		
34.2%	35.4%	37.0%	27.1%	29.6%	48.2%	N/A	
-4.7%	15.6%	26.2%	-10.2%	26.3%	18.8%	N/A	
45.0%	55.6%	49.1%	32.2%	40.0%	46.1%	N/A	
1	2	2	1	0	2		
Owned by Operations OCU							812
							1

Year to date performance matrix cont'd

This matrix is based on year to date comparison with 2007/2008 performance

		Target	Actual	
Prevent, reduce and detect crime	Serious violent crime	-6.0%	-0.7%	
	Serious violent crime SD	>50.0%	51.9%	
	All crime*		-3.0%	-2.9%
		OCU specific targets		
	Serious acquisitive crime*		-2.0%	-5.3%
		OCU specific targets		
	Serious acquisitive crime SD	>15.0%	10.6%	
	Murder offences	<16	11	
	Asset recovery (shown in £1000s)	£4,133.8	£1,317.4	
Class A drugs SD	>400	407		
Prevent, reduce and detect crime - targets achieved			4	
Organisational management	Police officer sickness	<7.5	7.58	
	Police staff sickness	<7.5	8.46	
	NCRS compliance	Good	N/A	
		90.0%		
	Budget spend	<92%	89%	
	Efficiency savings	>£10m	£2.44m	
Organisational management - targets achieved			1	
Force Total - targets achieved			9	

Central	Isle of Wight	North & East	Portsmouth	Southampton	Western	Crime	Operations
-2.9%	-25.0%	-8.1%	7.9%	-15.6%	69.0%	N/A	
58.0%	69.8%	55.1%	42.7%	48.6%	50.7%	N/A	
-2.1%	-8.8%	-0.8%	-0.7%	-4.8%	-3.4%	N/A	
-2.34%	-2.35%	-1.50%	-1.50%	-4.35%	-5.25%	N/A	
-2.9%	-7.5%	-4.5%	8.2%	-10.4%	-13.1%	N/A	
-1.39%	-2.11%	-2.38%	-1.36%	-2.27%	-2.48%	N/A	
11.6%	13.8%	8.7%	12.0%	9.8%	10.6%	N/A	
Owned by Crime OCU						11	Owned by Crime OCU
This is a Force measure							
Owned by Crime OCU						407	Owned by Crime OCU
2	4	3	0	3	2	2	
7.55	7.04	5.49	9.37	7.81	9.36	6.26	7.73
9.46	9.24	7.87	10.65	7.88	8.02	7.95	4.72
Fair	Fair	Fair	Poor	Poor	Fair	No data	N/A
82%	82%	84%	72%	64%	85%	No data	
91%	90%	93%	92%	90%	89%	86%	93%
This is a Force measure							
1	2	1	1	1	1	2	1
7	12	9	5	5	9	4	2

Note: Some areas contained within the Force Control Strategy and Force Target documents do not yet appear in the above matrix. This is because, to date, it has not been possible to establish sufficient baseline data to set a target. Work is ongoing in these areas to establish a baseline. Information in relation to our progress within these areas is contained within the detailed sections of the profile.

Monthly performance matrix

This matrix is based on monthly data compared to force target

		Target	Actual	Central	Isle of Wight	North & East	Portsmouth	Southampton	Western	Crime	Operations	
Safer Neighbourhoods	Assault with less serious injury*	<1163	1183	250	82	193	209	265	184	N/A		
	OCU specific targets			246.0	79.0	204.9	163.1	284.5	185.6	N/A		
	Anti-social use of motor vehicle		<1457	993	218	56	196	100	188	200	N/A	
		OCU specific targets			312.5	97.7	278.4	143.6	260.7	288.9	N/A	
	Anti-social behaviour		<8105	7415	1490	529	1302	1160	1648	1158	N/A	
		OCU specific targets			1702.0	594.2	1391.2	1268.4	1730.4	1288.1	N/A	
Reduce criminal damage		<2908	3157	656	196	618	426	728	533	N/A		
	OCU specific targets			635.5	228.1	523.9	362.1	620.4	537.9	N/A		
Safer Neighbourhoods - targets achieved			2	2	3	3	2	3	4			
Safeguard people	Domestic violent incident arrest rate	> 35.0%	30.9%	26.2%	29.1%	36.7%	31.5%	26.0%	42.7%	N/A		
	Hate crime detection rate	>45.0%	48.1%	66.7%	166.7%	83.3%	7.4%	33.3%	66.7%	N/A		
Safeguard people - targets achieved			1	1	2	0	0	2				
Protect our communities - targets achieved												
Prevent, reduce and detect crime	Serious violent crime	<75	84	5	9	14	24	15	17	N/A		
		OCU specific targets			13.0	7.0	12.6	14.4	21.1	6.6	N/A	
	Serious violent crime SD	>50.0%	53.6%	60.0%	66.7%	71.4%	33.3%	53.3%	58.8%	N/A		
	All crime*	<13588	13822	2887	750	2616	2234	2984	2351	N/A		
		OCU specific targets			2779.3	939.4	2551.9	2104.9	2871.8	2341.1	N/A	
	Serious acquisitive crime*	<1900	1750	306	71	356	369	366	282	N/A		
		OCU specific targets			336.3	80.7	371.6	311.7	422.7	377.4	N/A	
	Serious acquisitive crime SD	>15.0%	11.7%	7.8%	12.7%	14.6%	14.9%	10.4%	9.6%	N/A		
Asset recovery	£344,483	£176,690	This is Force measure									
Class A drugs SD	>33	36	Owned by Crime OCU								36	Owned by Crime OCU
Prevent, reduce and detect crime - targets achieved			3	3	2	0	3	2	1			
Organisational management	Police officer sickness	<0.63	0.51	0.69	0.16	0.28	0.48	0.71	0.76	0.47	0.31	
	Police staff sickness	<0.63	0.62	0.88	0.49	0.72	0.26	0.44	0.16	0.65	0.09	
Organisational management - targets achieved			2	0	2	1	2	1	1	1	2	
Force Total - targets achieved			8	6	9	8	4	7	9	2	2	

Note: Some areas contained within the Force Control Strategy and Force Target documents do not yet appear in the above matrix. This is because, to date, it has not been possible to establish sufficient baseline data to set a target. Work is on going in these areas to establish a baseline. Information in relation to our progress within these areas is contained within the detailed sections of this document.

Notes to be read in conjunction with matrices

All citizen focus data

OBTJ

Road traffic casualties

Budget spend

Efficiency savings

SD

Sickness data

OCU specific targets

Asset recovery

*** = variable targets across OCUs for these target areas based on previous performance and MSG position**

Based on "completely or very satisfied"

Offenders Brought To Justice

All data until 28 February 2009

Data is always one month in arrears

3 year target of £30m, notionally £10m per year

Sanction detections

Force Actual = total for ALL officers/police staff - including those not in OCU

OCU specific targets are rounded to 1 decimal place, the actual figure

may therefore seem the same but appear red due to this rounding

Asset recovery is the sum total of the values of cash forfeitures and confiscation orders

Safer neighbourhoods

Overall satisfaction

Rolling 12 months data relates to: Apr 08 - Mar 09; rolling 3 months data relates to Jan 09 - Mar 09
Overall satisfaction includes burglary, vehicle crime, violent crime and RTCs

Target 62%	Central	Isle of Wight	North & East	Portsmouth	Southampton	Western	Force	No. Surveys
Rolling 12 months	65%	71%	63%	65%	61%	64%	64%	7445
Rolling 3 months	70%	77%	66%	71%	63%	66%	68%	1744

Being kept informed

Rolling 12 months data relates to: Apr 08 - Mar 09; rolling 3 months data relates to Jan 09 - Mar 09
Being kept informed includes burglary, vehicle crime, violent crime and RTCs

Target 60%	Central	Isle of Wight	North & East	Portsmouth	Southampton	Western	Force	No. Surveys
Rolling 12 months	50%	57%	47%	48%	49%	50%	50%	7494
Rolling 3 months	61%	64%	56%	58%	54%	58%	58%	1708

Comparative satisfaction of minority ethnic groups

Data relates to interviews which took place Apr 08 - Mar 09
These figures are for overall satisfaction for burglary, vehicle crime, violent crime & RTCs; it excludes racist incidents

	Completely and very satisfied	Completely, very and fairly satisfied
White	64.6%	84.0%
Minority Ethnic	56.3%	81.0%

Satisfaction of victims of racist incidents

These figures relate to interviews which took place Apr 08 - Mar 09; these will be updated quarterly
Racist incident overall satisfaction = % completely or very satisfied

	Central	Isle of Wight	North & East	Portsmouth	Southampton	Western	Force
%	70%	50%	56%	55%	60%	50%	57%
Number of surveys	20	4	36	31	42	22	155

British Crime Survey data

This data is updated by iQuanta approximately every quarter.

Data up to and including year ending September 2008	Confidence in local police		Understanding community issues		Targets MSG = Most Similar Group	
Avon & Somerset	47.7%		63.6%		Confidence in local police To exceed MSG by 5% whilst maintaining performance	
Bedfordshire	50.9%		60.4%		Understanding community issues To exceed MSG by 3.5% whilst maintaining performance	
Essex	55.0%		64.4%			
Hampshire	57.9%	2nd in MSG	66.3%	2nd in MSG	Perception of drug use To be under MSG whilst maintaining performance	
Hertfordshire	58.6%		67.5%			
Kent	49.4%		59.9%			
Sussex	51.9%		61.7%			
Thames Valley	54.9%		64.7%			
MSG	53.3%		63.6%			

Data up to and including year ending September 2008	Perception of anti-social behaviour		Perception of drug use		Perception of drunk or rowdy behaviour	
Avon & Somerset	13.7%		23.4%		24.6%	
Bedfordshire	18.7%		30.1%		22.4%	
Essex	11.8%		18.6%		22.5%	
Hampshire	19.2%	8th in MSG	26.2%	6th in MSG	32.6%	8th in MSG
Hertfordshire	13.8%		22.7%		26.2%	
Kent	16.3%		23.0%		25.0%	
Sussex	11.4%		20.8%		20.3%	
Thames Valley	14.6%		26.5%		22.5%	
MSG	14.9%		23.9%		24.5%	

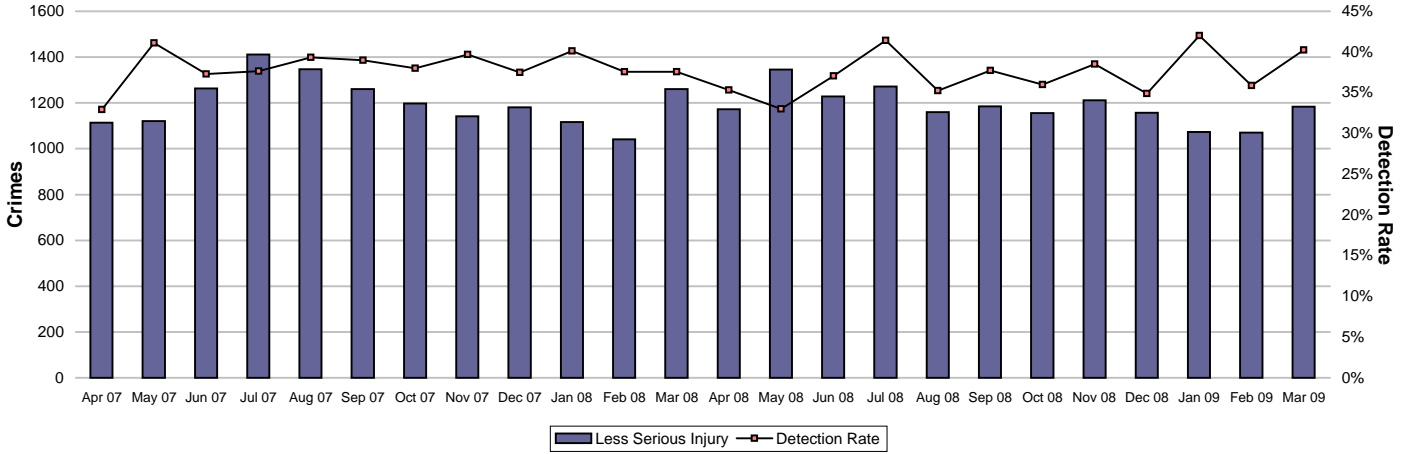
The target for the three areas below is not to decline against previous performance

	Dec 2007	Mar 2008	Jun 2008	Sep 2008	Dec 2008
Confidence in local police	57.4%	57.4%	57.9%	57.9%	
Understanding community issues	64.2%	65.5%	66.8%	66.3%	
Perception of drug use	23.0%	23.0%	26.4%	26.2%	

Safer neighbourhoods

Assault with less serious injury

Assault with less serious injury consists of crimsec codes 8G and 8J



Crimes	Central	Isle of Wight	North & East	Portsmouth	Southampton	Western	Force
YTD Crimes	2935	1003	2383	2189	3530	2173	14213
YTD Target	2895	930	2412	1920	3350	2185	13691
YTD 07/08 Crimes	3066	996	2409	2020	3683	2279	14453
This month	250	82	193	209	265	184	1183
% change from 07/08	-4.27%	0.70%	-1.08%	8.37%	-4.15%	-4.65%	-1.66%
MSG position	14 of 15	10 of 15	11 of 15	8 of 9	7 of 15	6 of 15	7 of 8



Detections	Central	Isle of Wight	North & East	Portsmouth	Southampton	Western	Force
YTD Detection Rate	34.45%	42.87%	37.60%	30.52%	37.56%	44.32%	37.25%
This month	31.60%	52.44%	38.34%	28.71%	45.66%	53.80%	40.24%
YTD 07/08 Detections	38.42%	44.78%	41.10%	32.87%	35.13%	41.38%	38.16%
MSG position	15 of 15	11 of 15	12 of 15	7 of 9	9 of 15	5 of 15	6 of 8

Note: Detections refer to Sanction Detections ONLY



Safer neighbourhoods

Anti-social use of motor vehicle

The below data shows the figures for both February and March in order to provide year end figures. Normally this has not been possible as the required data is only available from 5th of the following month. For the year end profile, this month it has been possible to gather the March data in time to publish.

It is gathered using Altaris closing codes as the primary data source, then RMS as the secondary data source to gather incidents not recorded within Altaris.

The Force total does not add up to the sum of OCUs, this is due to Altaris incident logs which do not contain a geographic location.

	Central	Isle of Wight	North & East	Portsmouth	Southampton	Western	Force
YTD Apr 08 to Feb 09	2674	763	2385	1166	2452	2819	12709
YTD Apr 07 to Feb 08	3559	1065	3178	1642	2958	3270	16635
February	174	44	204	83	151	167	848
YTD Target	3367.45	1052.33	2999.59	1547.38	2808.35	3113.06	15697.1
% v target	-20.6%	-27.5%	-20.5%	-24.6%	-12.7%	-9.4%	-19.0%
% change from 07/08	-24.9%	-28.4%	-25.0%	-29.0%	-17.1%	-13.8%	-23.6%

	Central	Isle of Wight	North & East	Portsmouth	Southampton	Western	Force
YTD Apr 08 to Mar 09	2892	819	2581	1266	2640	3019	13702
YTD Apr 07 to Mar 08	3874	1210	3450	1779	3231	3581	18057
March	218	56	196	100	188	200	993
YTD Target	3680.0	1150.0	3278.0	1691.0	3069.0	3402.0	17154.0
% v target	-21.4%	-28.8%	-21.3%	-25.1%	-14.0%	-11.3%	-20.1%
% change from 07/08	-25.3%	-32.3%	-25.2%	-28.8%	-18.3%	-15.7%	-24.1%

Anti-social use of motor vehicle - relates to NSIR category Vehicle Nuisance/Inappropriate Use within the Anti-Social Behaviour Grouping

Anti-social behaviour

The below data shows the figures for both February and March in order to provide year end figures. Normally this has not been possible as the required data is only available from 5th of the following month. For the year end profile, this month it has been possible to gather the March data in time to publish.

It is gathered using Altaris closing codes as the primary data source, then RMS as the secondary data source to gather incidents not recorded within Altaris.

The Force total does not add up to the sum of OCUs, this is due to Altaris incident logs which do not contain a geographic location.

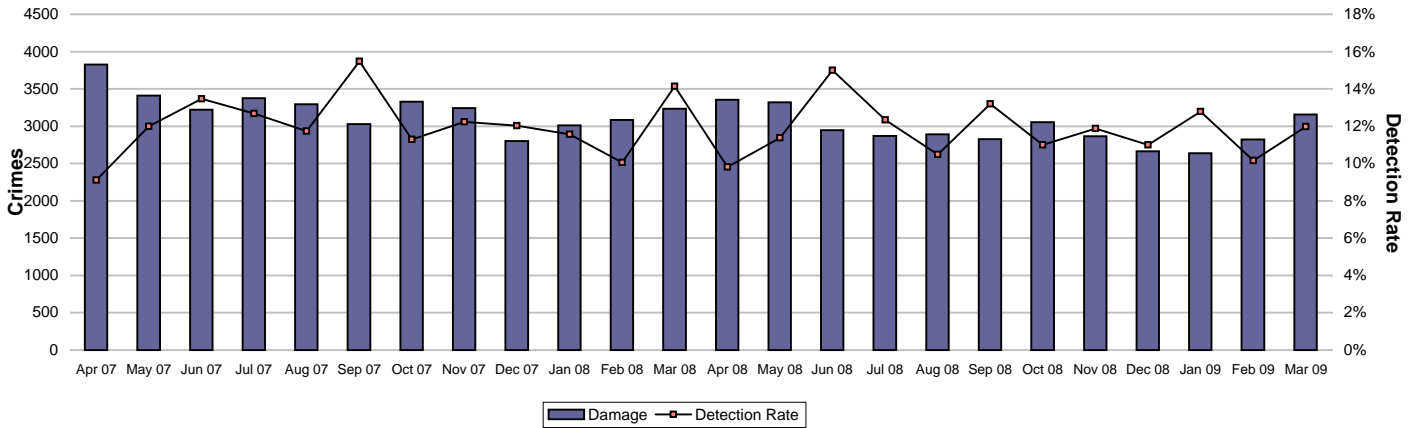
	Central	Isle of Wight	North & East	Portsmouth	Southampton	Western	Force
YTD Apr 08 to Feb 09	17668	6314	15631	13372	19580	13257	87243
YTD Apr 07 to Feb 08	19420	6812	15849	14502	19882	14756	92735
February	1456	499	1338	1113	1668	1129	7359
YTD Target	18338.0	6401.8	14988.8	13665.6	18643.6	13877.9	87321.3
% v target	-3.7%	-1.4%	4.3%	-2.1%	5.0%	-4.5%	-0.1%
% change from 07/08	-9.0%	-7.3%	-1.4%	-7.8%	-1.5%	-10.2%	-5.9%

	Central	Isle of Wight	North & East	Portsmouth	Southampton	Western	Force
YTD Apr 08 to Mar 09	19158	6843	16933	14532	21228	14415	94658
YTD Apr 07 to Mar 08	21095	7364	17242	15720	21446	15964	100448
March	1490	529	1302	1160	1648	1158	7415
YTD Target	20040.0	6996.0	16380.0	14934.0	20374.0	15166.0	95426.0
% v target	-4.4%	-2.2%	3.4%	-2.7%	4.2%	-5.0%	-0.8%
% change from 07/08	-9.2%	-7.1%	-1.8%	-7.6%	-1.0%	-9.7%	-5.8%

Anti-social behaviour - relates to NSIR categories Environmental Damage/Littering, Rowdy & Inconsiderate and Neighbours within the Anti-Social Behaviour Grouping

Safer neighbourhoods

Criminal damage



Crimes	Central	Isle of Wight	North & East	Portsmouth	Southampton	Western	Force
YTD Crimes	7633	2542	6711	4726	7440	6357	35409
YTD Target	7482	2686	6167	4263	7305	6333	34235
YTD 07/08 Crimes	8465	3055	7005	4846	8299	7198	38868
This month	656	196	618	426	728	533	3157
% change from 07/08	-9.83%	-16.79%	-4.20%	-2.48%	-10.35%	-11.68%	-8.90%
MSG position	14 of 15	9 of 15	14 of 15	6 of 9	15 of 15	7 of 15	8 of 8



Detections	Central	Isle of Wight	North & East	Portsmouth	Southampton	Western	Force
YTD Detection Rate	12.96%	13.93%	12.11%	10.58%	9.69%	12.16%	11.72%
This month	15.55%	13.27%	11.97%	11.97%	8.65%	11.63%	11.97%
YTD 07/08 Detections	11.97%	14.01%	11.98%	12.77%	11.17%	12.16%	12.09%
MSG position	9 of 15	11 of 15	13 of 15	8 of 9	14 of 15	11 of 15	8 of 8

Note: Detections refer to Sanction Detections ONLY



Safeguard people

Domestic violence (and abuse) is defined by ACPO as: 'any incidence of threatening behaviour, violence or abuse (psychological, physical, sexual, financial or emotional) between adults, aged 18 and over, who are or have been intimate partners or family members, regardless of gender or sexuality'

Domestic violence (and abuse) incident arrest rate

Domestic violence arrest rate is based on records where the occurrence has been flagged as a domestic, and has an arrest event or a linked person reason of arrested. This measure looks at all domestic incidents (not only crimes)

Target >35%

Year to Date	Central	Isle of Wight	North & East	Portsmouth	Southampton	Western	Force
Domestic Incidents	4784	1575	3609	3975	4966	2404	21313
Domestic Incident Arrests	1634	558	1335	1079	1471	1159	7236
Domestic Incident Arrest Rate	34.16%	35.43%	36.99%	27.14%	29.62%	48.21%	33.95%

Month	Central	Isle of Wight	North & East	Portsmouth	Southampton	Western	Force
Domestic Incidents	370	103	278	314	415	185	1665
Domestic Incident Arrests	97	30	102	99	108	79	515
Domestic Incident Arrest Rate	26.22%	29.13%	36.69%	31.53%	26.02%	42.70%	30.93%

Domestic violence (and abuse) crime arrest rate

Year to Date	Central	Isle of Wight	North & East	Portsmouth	Southampton	Western	Force
Domestic Crimes	2052	635	1544	1295	1882	1339	8747
Domestic Crime Arrests	1511	497	1240	1000	1320	1083	6651
Domestic Crime Arrest Rate	73.64%	78.27%	80.31%	77.22%	70.14%	80.88%	76.04%

Month	Central	Isle of Wight	North & East	Portsmouth	Southampton	Western	Force
Domestic Crimes	154	37	132	124	166	99	712
Domestic Crime Arrests	95	28	100	96	96	73	488
Domestic Crime Arrest Rate	61.69%	75.68%	75.76%	77.42%	57.83%	73.74%	68.54%

Domestic violence (and abuse) victimisation

Placeholder - this measure was a joint APACS & National Indicator set measure looking at the work of MARACS. It was dropped from the 2008/09 APACS guidance, however is expected to be included in the 09/10 guidance, at which time technical guidance will be published to enable reporting

Repeat victims of domestic violence (and abuse)

	Central	Isle of Wight	North & East	Portsmouth	Southampton	Western	Force
YTD All Domestic Violence	4784	1575	3609	3975	4966	2404	21313
YTD 07/08 All Domestic Violence	4285	1452	3033	3917	4412	2560	19659
YTD Repeat Victims	1930	687	1132	2151	2120	909	8929
YTD 07/08 Repeat Victims	1749	586	894	1990	1239	867	7325
YTD % Repeat Victims	40.3%	43.6%	31.4%	54.1%	42.7%	37.8%	41.9%
YTD 07/08% Repeat Victims	40.8%	40.4%	29.5%	50.8%	28.1%	33.9%	37.3%

Crimes - Target -5% in repeat victims	Central	Isle of Wight	North & East	Portsmouth	Southampton	Western	Force
YTD All Domestic Violence	2052	635	1544	1295	1882	1339	8747
YTD 07/08 All Domestic Violence	2024	621	1415	1354	1772	1303	8489
YTD Repeat Victims	486	156	352	360	562	304	2220
YTD 07/08 Repeat Victims	510	135	279	401	445	256	2026
YTD % Repeat Victims	23.7%	24.6%	22.8%	27.8%	29.9%	22.7%	25.4%
YTD 07/08% Repeat Victims	25.2%	21.7%	19.7%	29.6%	25.1%	19.6%	23.9%
% change in repeat victims from 07/08	-4.7%	15.6%	26.2%	-10.2%	26.3%	18.8%	9.6%

Note: Crimes are a subset of the incident data. This data reflects ALL crime types, and is not restricted to 'violent' offences

Crimes - This month	Central	Isle of Wight	North & East	Portsmouth	Southampton	Western	Force
This month All Domestic Violence	154	37	132	124	166	99	712
This month Repeat Victims	39	14	34	33	50	26	196
This month % Repeat Victims	25.3%	37.8%	25.8%	26.6%	30.1%	26.3%	27.5%

Domestic violence (DV) OBJT rate

The Tier 3 "other offences" measure includes the DV OBJT rate which currently cannot be individually extracted. The table below shows the percentage of persons brought to justice for "other offences" including domestic violence incidents against the total number of DV incidents.

OBJT Crime category	Jul 2008	Aug 2008	Sep 2008	Oct 2008	Nov 2008	Dec 2008	Rolling average
Tier 3: Other Offences	32%	26%	28%	20%	26%	30%	29%

Hate crime detection rate

Target >45%

Year to Date	Central	Isle of Wight	North & East	Portsmouth	Southampton	Western	Force
Incidents	268	68	275	370	643	241	1865
Crimes	202	63	230	273	472	219	1459
Detections	91	35	113	88	189	101	617
Detection Rate	45.05%	55.56%	49.13%	32.23%	40.04%	46.12%	42.29%

Month	Central	Isle of Wight	North & East	Portsmouth	Southampton	Western	Force
Incidents	19	4	23	31	54	15	146
Crimes	15	3	24	27	45	15	129
Detections	10	5	20	2	15	10	62
Detection Rate	66.67%	166.67%	83.33%	7.41%	33.33%	66.67%	48.06%

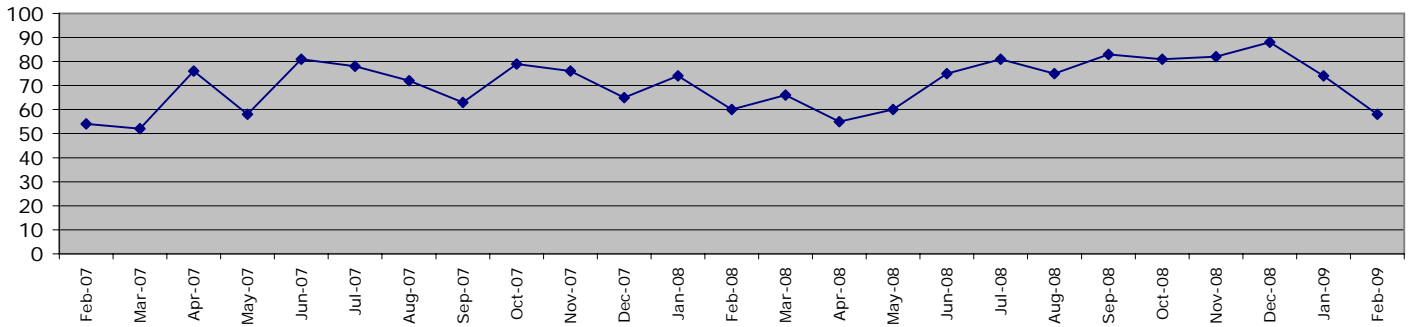
Sexual offender reoffending rate

This indicator was contained within the draft APACS/National Indicator Set measures, however following national consultation this was removed from both sets. Hampshire has not yet identified how this target will be measured in the absence of technical guidance.

Protect our communities

Road traffic casualties

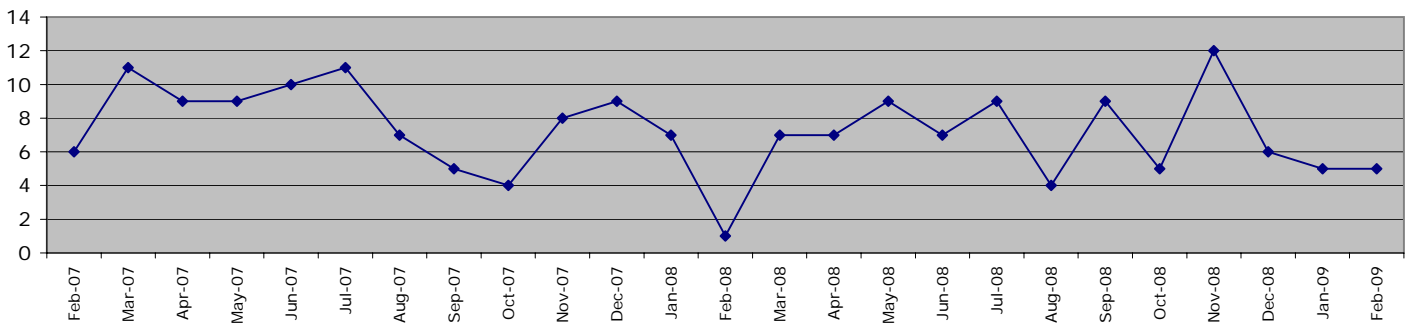
Fatal/serious injury casualties - all victims



The Force target 2008/2009 is for less than 938 casualties, which equates to less than 904 in 334 days YTD Feb 2009 = 812 casualties

	Central	Isle of Wight	North&East	Portsmouth	Southampton	Western	Force
1 April 2008 - 28 February 2009	167	82	182	97	76	208	812
of these, fatalities were	13	8	12	7	5	21	66
1 April 2007 - 29 February 2008	201	66	179	66	69	201	782

Fatal/serious injury casualties - victims under 16 years



The DETR target is for a 50% reduction in child casualties by 2010 from 164 to 82 (Target 2008/2009 = 94)

	Central	Isle of Wight	North&East	Portsmouth	Southampton	Western	Force
1 April 2008 - 28 February 2009	16	11	19	10	10	12	78
of these, fatalities were	0	0	0	0	0	2	2
1 April 2007 - 29 February 2008	17	6	16	18	7	16	80

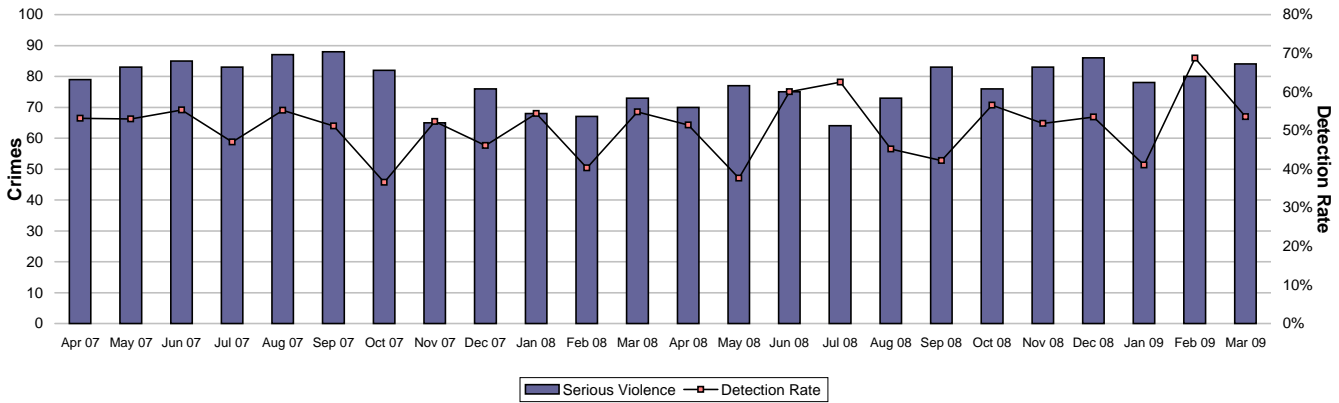
Note: YTD numbers may change as the accident record data are updated each month

Note: The casualties in East Hampshire have all been attributed to North & East OCU in the absence of a breakdown by OCUs

Prevent, reduce and detect crime

Serious violent crime

Serious violent crime consists of crimsec codes 1, 2, 4.1-4.4, 4.6, 4.8, 5A, 5B, 5C, 8F, 8H and 37.1



Crimes	Central	Isle of Wight	North & East	Portsmouth	Southampton	Western	Force
YTD Crimes	169	63	147	192	216	142	929
YTD Target	152	82	147	169	248	78	875
YTD 07/08 Crimes	174	84	160	178	256	84	936
This month	5	9	14	24	15	17	84
% change from 07/08	-2.87%	-25.00%	-8.13%	7.87%	-15.63%	69.05%	-0.75%
MSG position	8 of 15	1 of 15	15 of 15	8 of 9	1 of 15	11 of 15	7 of 8

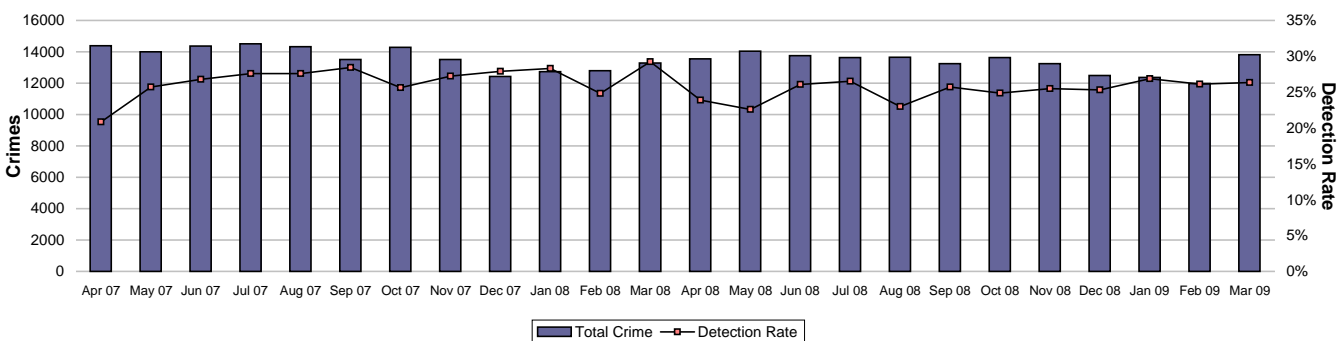


Detections	Central	Isle of Wight	North & East	Portsmouth	Southampton	Western	Force
Target >50%							
YTD Detection Rate	57.99%	69.84%	55.10%	42.71%	48.61%	50.70%	51.88%
This month	60.00%	66.67%	71.43%	33.33%	53.33%	58.82%	53.57%
YTD 07/08 Detections	67.82%	30.95%	60.00%	39.89%	42.58%	57.14%	50.00%
MSG position	5 of 15	1 of 15	5 of 15	5 of 9	1 of 15	9 of 15	1 of 8

Note: Detections refer to Sanction Detections ONLY



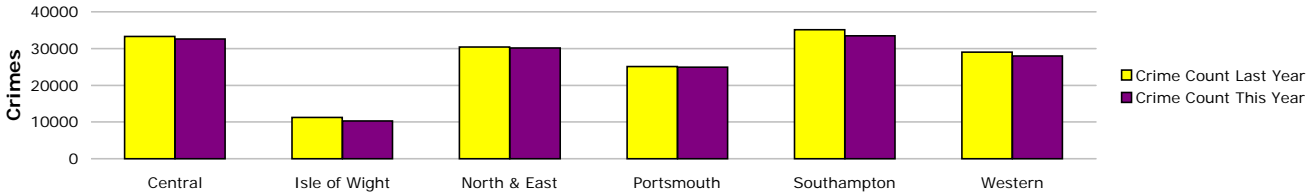
All crime



Note: MSG data is a month in arrears. MSG positions in this profile relate to the position the Force/OCU were a month ago

Prevent, reduce and detect crime

Crimes	Central	Isle of Wight	North & East	Portsmouth	Southampton	Western	Force
YTD Crimes	32565	10254	30172	24946	33457	28009	159403
YTD Target	32723	11061	30045	24783	33813	27565	159989
YTD 07/08 Crimes	33251	11241	30405	25123	35145	28987	164152
This month	2887	750	2616	2234	2984	2351	13822
% change from 07/08	-2.06%	-8.78%	-0.77%	-0.70%	-4.80%	-3.37%	-2.89%
MSG position	11 of 15	6 of 15	10 of 15	7 of 9	14 of 15	7 of 15	7 of 8



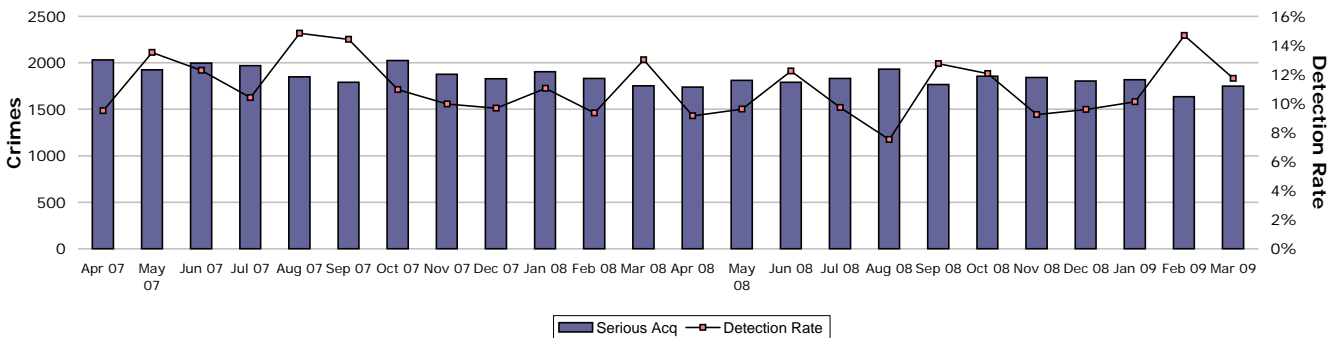
Detections	Central	Isle of Wight	North & East	Portsmouth	Southampton	Western	Force
Target >25%							
YTD Detection Rate	24.06%	33.03%	26.03%	25.56%	24.10%	23.77%	25.20%
This month	23.52%	37.33%	28.21%	26.77%	25.97%	24.33%	26.35%
YTD 07/08 Detections	25.32%	31.81%	27.43%	28.47%	26.32%	24.05%	26.63%
MSG position	12 of 15	5 of 15	11 of 15	4 of 9	12 of 15	14 of 15	7 of 8

Note: Detections refer to Sanction Detections ONLY

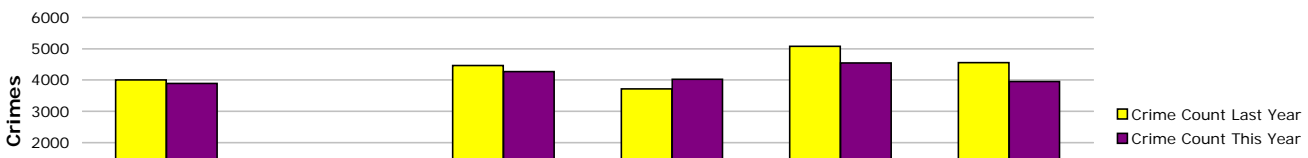


Serious acquisitive crime

Serious acquisitive crime consists of crimsec codes 28, 29, 34A, 34B, 37/2, 45 and 48



Crimes	Central	Isle of Wight	North & East	Portsmouth	Southampton	Western	Force
YTD Crimes	3887	894	4267	4025	4547	3955	21575
YTD Target	3959	950	4374	3670	4977	4444	22373
YTD 07/08 Crimes	4002	967	4467	3721	5076	4552	22785
This month	306	71	356	369	366	282	1750
% change from 07/08	-2.87%	-7.55%	-4.48%	8.17%	-10.42%	-13.12%	-5.31%
MSG position	5 of 15	4 of 15	9 of 15	5 of 9	4 of 15	5 of 15	2 of 8



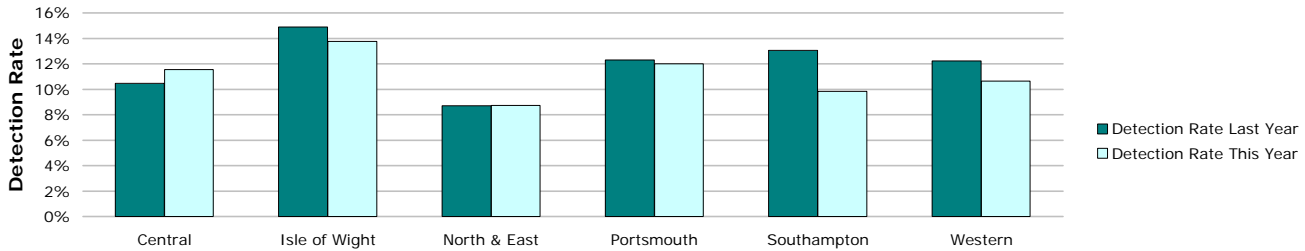
Prevent, reduce and detect crime



Detections

Target > 15%	Central	Isle of Wight	North & East	Portsmouth	Southampton	Western	Force
YTD Detection Rate	11.55%	13.76%	8.74%	12.00%	9.83%	10.64%	10.64%
This month	7.84%	12.68%	14.61%	14.91%	10.38%	9.57%	11.71%
YTD 07/08 Detections	10.47%	14.89%	8.71%	12.31%	13.06%	12.24%	11.54%
MSG position	12 of 15	8 of 15	13 of 15	3 of 9	11 of 15	9 of 15	6 of 8

Note: Detections refer to Sanction Detections ONLY



Serious acquisitive crime breakdown

Robbery

Year to date	Central	Isle of Wight	North & East	Portsmouth	Southampton	Western	Force
Crimes	114	22	179	251	422	166	1154
Trigger point	135	49	147	224	343	150	1046
07/08 crimes	135	40	152	221	347	146	1041
% change from 07/08	-15.56%	-45.00%	17.76%	13.57%	21.61%	13.70%	10.85%
Detection rate	30.70%	27.27%	17.88%	11.55%	15.88%	31.93%	19.24%

March 2009	Central	Isle of Wight	North & East	Portsmouth	Southampton	Western	Force
Crimes	11	5	20	35	36	7	114
Detection rate	27.27%	40.00%	20.00%	11.43%	8.33%	57.14%	17.54%

Dwelling burglary

Year to date	Central	Isle of Wight	North & East	Portsmouth	Southampton	Western	Force
Crimes	1058	281	1351	1415	935	988	6028
Trigger point	944	271	1053	1001	970	900	5138
07/08 crimes	951	280	1076	1013	989	954	5263
% change from 07/08	11.25%	0.36%	25.56%	39.68%	-5.46%	3.56%	14.54%
Detection rate	18.71%	23.13%	11.40%	18.59%	18.93%	18.22%	17.20%

March 2009	Central	Isle of Wight	North & East	Portsmouth	Southampton	Western	Force
Crimes	81	17	116	114	95	91	514
Detection rate	9.88%	11.76%	6.03%	37.72%	15.79%	14.29%	17.12%

Vehicle crime

Year to date	Central	Isle of Wight	North & East	Portsmouth	Southampton	Western	Force
Crimes	2715	591	2737	2359	3190	2801	14393
Trigger point	2880	629	3173	2444	3664	3394	16184
07/08 crimes	2916	647	3239	2487	3740	3452	16481
% change from 07/08	-6.89%	-8.66%	-15.50%	-5.15%	-14.71%	-18.86%	-12.67%
Detection rate	7.96%	8.80%	6.83%	8.10%	6.36%	6.71%	7.20%

March 2009	Central	Isle of Wight	North & East	Portsmouth	Southampton	Western	Force
Crimes	214	49	220	220	235	184	1122
Detection rate	6.07%	10.20%	18.64%	3.64%	8.51%	5.43%	8.65%

Prevent, reduce and detect crime

Theft of a motor vehicle

Year to date	Central	Isle of Wight	North & East	Portsmouth	Southampton	Western	Force
Crimes	579	129	753	513	717	546	3237
Detection rate	19.52%	24.03%	12.35%	23.00%	14.92%	18.68%	17.42%

March 2009	Central	Isle of Wight	North & East	Portsmouth	Southampton	Western	Force
Crimes	40	14	62	44	53	28	241
Detection rate	17.50%	21.43%	14.52%	6.82%	11.32%	28.57%	14.94%

Theft from a motor vehicle

Year to date	Central	Isle of Wight	North & East	Portsmouth	Southampton	Western	Force
Crimes	2136	462	1984	1846	2473	2255	11156
Detection rate	4.82%	4.55%	4.74%	3.95%	3.88%	3.81%	4.24%

March 2009	Central	Isle of Wight	North & East	Portsmouth	Southampton	Western	Force
Crimes	174	35	158	176	182	156	881
Detection rate	3.45%	5.71%	20.25%	2.84%	7.69%	1.28%	6.92%

Robbery, burglary and vehicle crime are the component parts of serious acquisitive crime. These individual crime types do not have targets. Trigger points are included here; these add up to the serious acquisitive target and are calculated based on the breakdown of these crimes in 07/08.

Gun crime rate

	Central	Isle of Wight	North & East	Portsmouth	Southampton	Western	Force
YTD March 2009	26	3	33	16	23	18	119
YTD March 2008	23	9	29	17	20	19	117
% change from 07/08	13.0%	-66.7%	13.8%	-5.9%	15.0%	-5.3%	1.7%

Gun crime figures published reflect the APACS technical definition for 2008/09 which differs from that used in 2007/08. Manual checking has been undertaken to try to provide comparative 2007/08 figures, however it is not possible to provide completed comparable figures. In 2008/09 gun crime includes "where the victim is convinced of the presence of a firearm, even if it is concealed and there is evidence of the suspect's intention to create this impression"; these occurrences were not included in previously published 2007/08 data.

Knife crime rate

	Central	Isle of Wight	North & East	Portsmouth	Southampton	Western	Force
YTD March 2009	136	32	134	125	210	80	717
YTD March 2008	146	40	141	173	205	93	798
% change from 07/08	-6.8%	-20.0%	-5.0%	-27.7%	2.4%	-14.0%	-10.2%

Knife = knife or other sharp instrument (including broken glass/bottles) piercing the skin or, for threats and attempts, instruments normally capable of piercing the skin

Knife crime figures published reflect the APACS technical definition for 2008/09 which differs from that used in 2007/08. Manual checking has been undertaken to try to provide comparative 2007/08 figures, however it is not possible to provide completed comparable figures. In 2008/09 knife crime includes "where the victim is convinced of the presence of a knife, even if it is concealed and there is evidence of the suspect's intention to create this impression"; these occurrences were not included in previously published 2007/08 data.

Serious sexual crime OBTJ rate

The table below shows % of persons brought to justice for serious sexual crimes against the total number of serious sexual crimes

OBTJ Crime category	Jul 2008	Aug 2008	Sep 2008	Oct 2008	Nov 2008	Dec 2008	Rolling average
Tier 1: Serious Sexual Offences	36%	35%	46%	37%	32%	59%	36%

Murder offences

2008/2009 target = <16 murder offences

	Central	Isle of Wight	North & East	Portsmouth	Southampton	Western	Force
YTD March 2009	1	2	0	2	4	2	11
YTD March 2008	6	0	4	4	3	2	19
% change from 07/08							-42.1%

For more information, please go to the Specialist Operations - 7 OCU page

Asset recovery

Asset recovery is the sum total of the values of cash forfeitures and confiscation orders

	Central	Isle of Wight	North & East	Portsmouth	Southampton	Western	Force
April 2008	£38,187.90	£0.00	£18,413.50	£0.00	£0.00	£0.00	£56,601.40
May 2008	£0.00	£0.00	£0.00	£0.00	£69,735.00	£0.00	£69,735.00
June 2008	£76,739.37	£0.00	£146,538.50	£0.00	£8,676.00	£4,693.00	£236,646.87
July 2008	£0.00	£0.00	£0.00	£1,104.00	£2,035.00	£2,100.00	£5,239.00
August 2008	£0.00	£0.00	£22,699.60	£0.00	£15,469.55	-£19,520.00	£18,649.15
September 2008	£0.00	£0.00	£1,175.00	£4,447.95	£221,549.03	£21,427.00	£248,598.98
October 2008	£9,273.38	£1,956.76	£60,660.00	£5,400.00	£0.00	£0.00	£77,290.14
November 2008	£0.00	£7,930.00	£1,710.00	£1,250.00	£22,012.77	£0.00	£32,902.77
December 2008	£0.00	£0.00	£0.00	£0.00	£1.00	£0.00	£1.00
January 2009	£0.00	£0.00	£25,500.84	£1,630.73	£149,558.77	£0.00	£176,690.34
February 2009	£208,580.30	£0.00	£0.00	£602.00	£118,098.50	£39,919.51	£367,200.31
March 2009	£125.00	£0.00	£0.00	£1,876.64	£17,776.00	£8,082.82	£27,860.46
Cumulative total	£332,905.95	£9,886.76	£276,697.44	£16,311.32	£624,911.62	£56,702.33	£1,317,415.42

Prolific and other Priority Offenders (PPOs) convictions

Prevent, reduce and detect crime

Number of convictions recorded against identified, prolific and other priority offenders

Convictions	Aug 2008	Sep 2008	Oct 2008	Nov 2008	Dec 2008	Jan 2009	Feb 2009
Persistent Young Offenders	67	74	86	71	89	94	83
Priority Prolific Offenders	16	20	35	13	28	27	40
Persistent Priority Prolific Young Offenders	1	2	1	2	5	3	2
Young Offenders	183	192	155	162	183	230	162

Class A drugs sanction detections

	Central	Isle of Wight	North & East	Portsmouth	Southampton	Western	Crime	Operations	No OIC	Force
								YTD March 2009 target		400
YTD March 2009	19	44	89	30	58	76	76	0	15	407
YTD March 2008	33	35	55	24	59	51	219	0	25	501

Drug Intervention Measures (DIMs)

	Central	Isle of Wight	North & East	Portsmouth	Southampton	Western	Crime	Force
YTD March 2009	42	13	13	81	90	21	0	260
YTD March 2008	31	43	83	17	28	19	1	222
% change from 07/08	135.5%	30.2%	15.7%	476.5%	321.4%	110.5%	0.0%	1089.8%

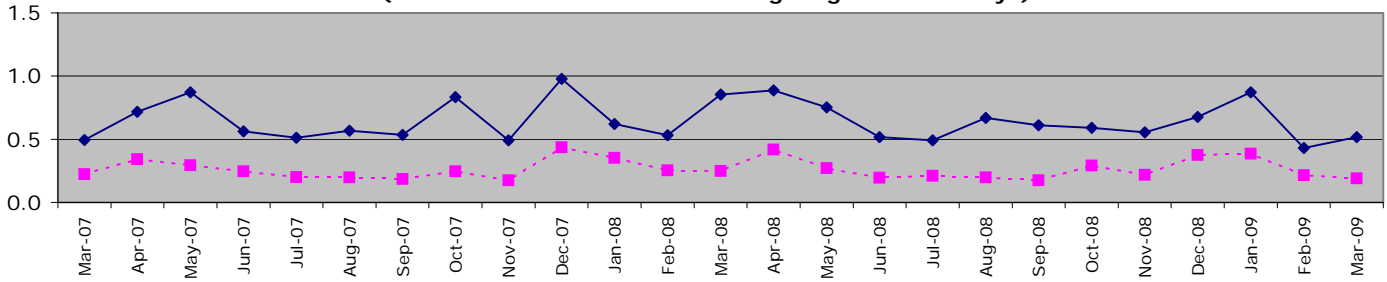
Organisational management

All Police officer sickness YTD = **7.58**

All Police officer sickness Mar = **0.51**

Police officers in OCUs

**Sickness and injury absence days per officer by month
(broken line shows data excluding long-term sick days)**

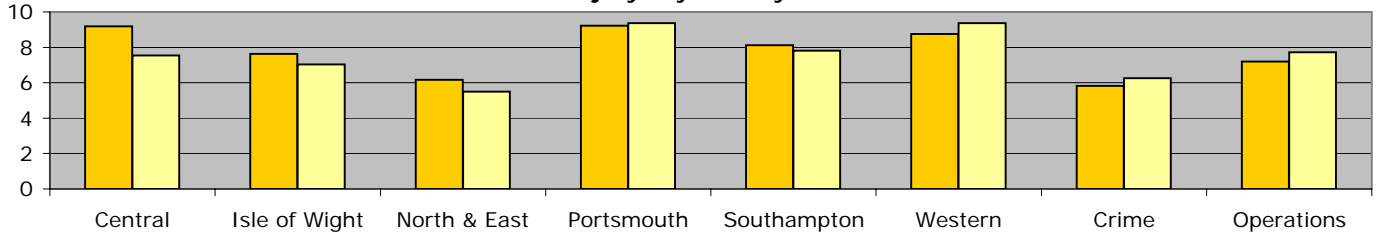


Force target for 08/09 = 7.5 days or fewer per officer (7.50 for 12 months) **YTD = 7.58 days lost per officer**

	Central	Isle of Wight	North & East	Portsmouth	Southampton	Western	Crime	Operations	OCU Totals
YTD Apr 08 - March 09	7.55	7.04	5.49	9.37	7.81	9.36	6.26	7.73	7.58
YTD Apr 07 - March 08	9.19	7.64	6.16	9.22	8.11	8.75	5.82	7.20	7.82
This month	0.69	0.16	0.28	0.48	0.71	0.76	0.47	0.31	0.52
% change	-17.9%	-7.8%	-10.9%	1.6%	-3.7%	7.0%	7.4%	7.4%	-3.1%

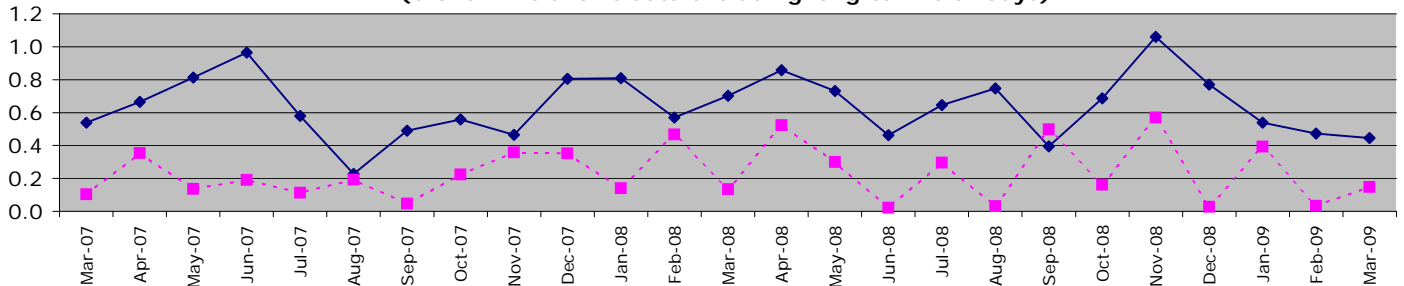
From January 09 "Operations" no longer includes SO Portfolio and Projects Staff

Sickness/injury days lost by officer YTD



Police officers not in OCUs

**Sickness and injury absence days per police officer by month
(broken line shows data excluding long-term sick days)**

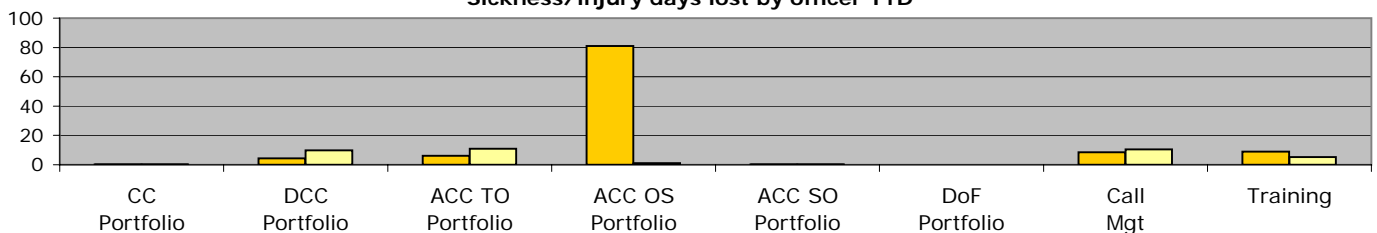


Force target for 08/09 = 7.5 days or fewer per officer (7.50 for 12 months) **YTD = 7.71 days lost per officer**

	CC Portfolio	DCC Portfolio	ACC TO Portfolio	ACC OS Portfolio	ACC SO Portfolio	DoF Portfolio	Call Mgt	Training	Non-OCU Totals
YTD Apr 08 - March 09	0.18	9.91	10.84	1.11	0.16	N/A	10.54	5.18	7.71
YTD Apr 07 - March 08	0.16	4.33	6.16	81.00	0.15	N/A	8.49	9.03	7.76
This month	0.00	1.33	1.20	0.17	0.00	N/A	-0.03	-0.03	0.44
% change	0.0%	128.9%	75.9%	-98.6%	12.3%	N/A	24.0%	-42.6%	-0.6%

ACC OS Portfolio excludes Call Mgt & Training figures which are reported on separately. No police officers work within DoF Portfolio. From Jan 09 - SO Portfolio includes CJD, SO Portfolio and Projects Staff

Sickness/injury days lost by officer YTD



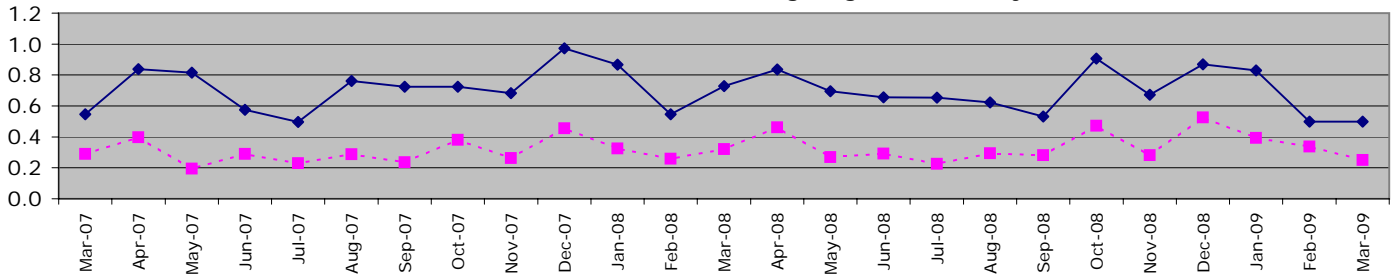
Organisational management

All Police staff sickness YTD = **8.46**

All Police staff sickness Mar = **0.62**

Police staff in OCUs

**Sickness and injury absence days per police staff member by month
(broken line shows data excluding long-term sick days)**

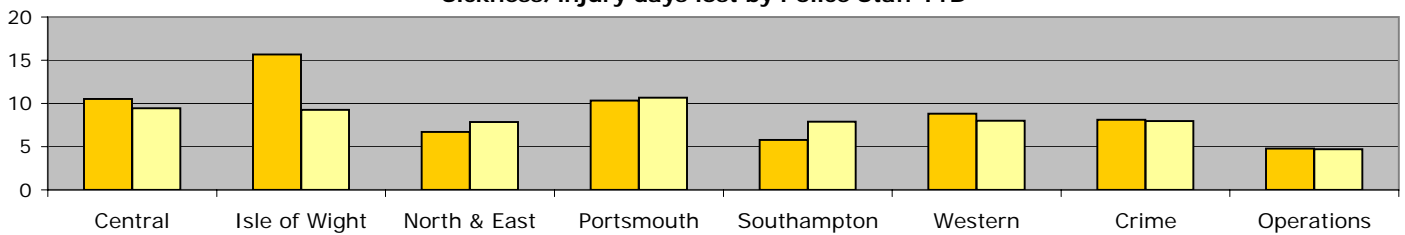


Force target for 08/09 = 7.5 days or fewer per staff (7.50 for 12 months) **YTD = 8.29 days lost per staff member**

	Central	Isle of Wight	North & East	Portsmouth	Southampton	Western	Crime	Operations	OCU Totals
YTD Apr 08 - March 09	9.46	9.24	7.87	10.65	7.88	8.02	7.95	4.72	8.29
YTD Apr 07 - March 08	10.54	15.66	6.69	10.33	5.79	8.80	8.11	4.78	8.57
This month	0.88	0.49	0.72	0.26	0.44	0.16	0.65	0.09	0.50
% change	-10.2%	-41.0%	17.5%	3.1%	36.1%	-8.9%	-2.0%	-1.2%	-3.3%

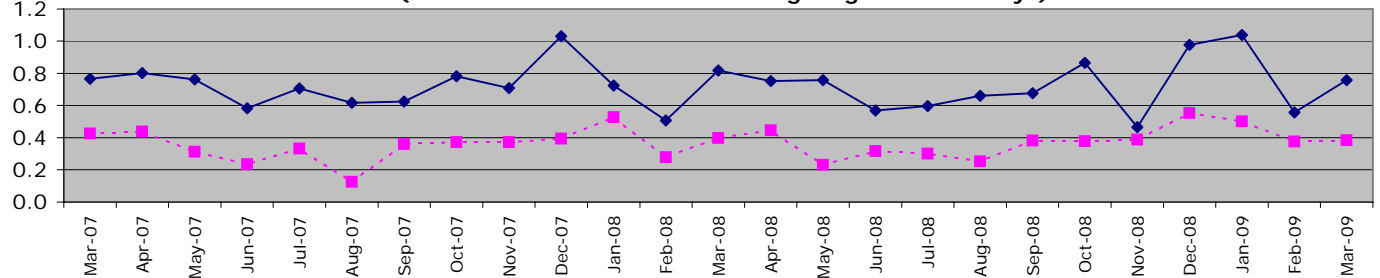
From January 09 "Operations" no longer includes SO Portfolio and Projects Staff

Sickness/injury days lost by Police Staff YTD



Police staff not in OCUs

**Sickness and injury absence days per police staff member by month
(broken line shows data excluding long-term sick days)**



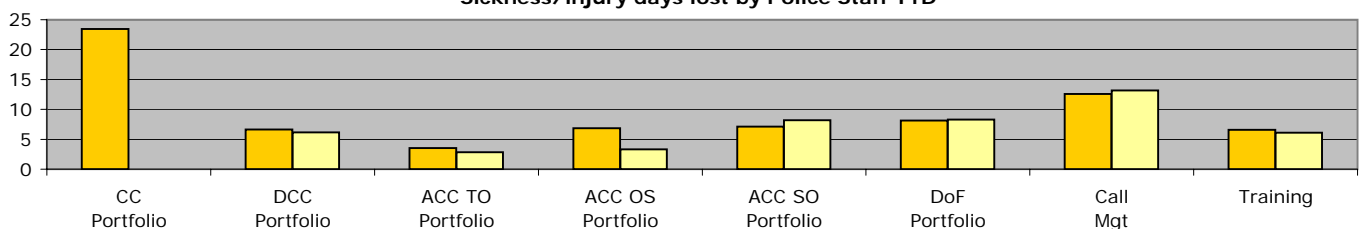
Force target for 08/09 = 7.5 days or fewer per staff (7.50 for 12 months) **YTD = 8.65 days lost per staff member**

	CC Portfolio	DCC Portfolio	ACC TO Portfolio	ACC OS Portfolio	ACC SO Portfolio	DoF Portfolio	Call Mgt	Training	Non-OCU Totals
YTD Apr 08 - March 09	0.00	6.17	2.82	3.30	8.18	8.32	13.15	6.08	8.65
YTD Apr 07 - March 08	23.43	6.62	3.52	6.87	7.10	8.12	12.57	6.60	8.69
This month	0.00	0.60	0.30	0.22	0.82	0.38	1.04	0.87	0.75
% change	-100.0%	-6.8%	-20.0%	-51.9%	15.3%	2.5%	4.6%	-7.9%	-0.6%

ACC OS Portfolio excludes Call Mgt & Training figures which are reported on separately.

From Jan 09 - SO Portfolio includes CJD, SO Portfolio and Projects Staff

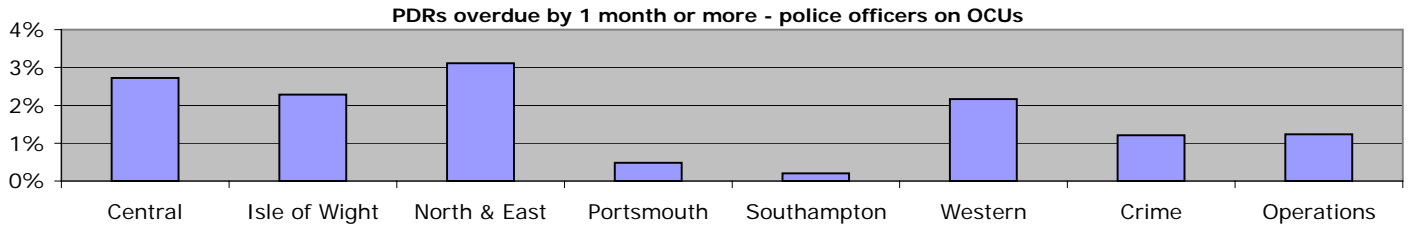
Sickness/injury days lost by Police Staff YTD



Organisational management

Overdue PDRs

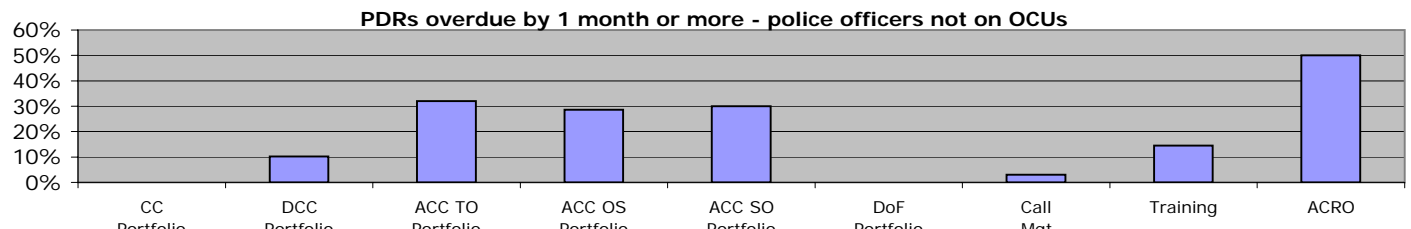
Police officer PDRs - police officers in OCUs



March 2009	Central	Isle of Wight	North & East	Portsmouth	Southampton	Western	Crime	Operations
Population	624	219	547	415	494	508	413	406
Overdue	17	5	17	2	1	11	5	5
% overdue	2.7%	2.3%	3.1%	0.5%	0.2%	2.2%	1.2%	1.2%

From January 09 "Operations" no longer includes SO Portfolio and Projects Staff

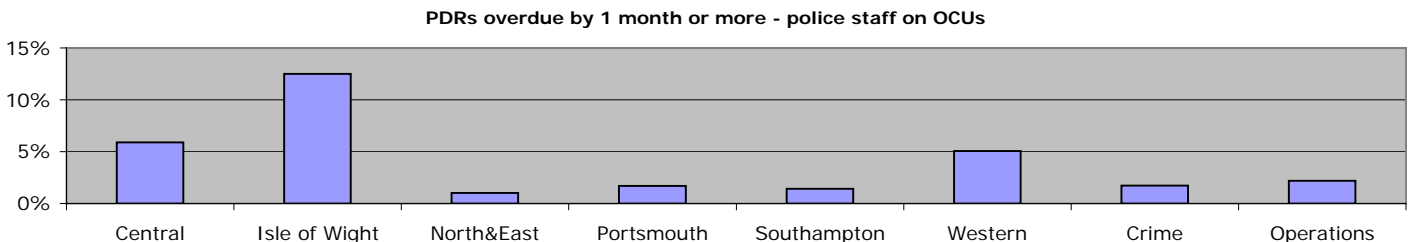
Police officer PDRs - police officers not on OCUs



March 2009	CC Portfolio	DCC Portfolio	ACC TO Portfolio	ACC OS Portfolio	ACC SO Portfolio	DoF Portfolio	Call Mgt	Training	ACRO
Population	9	39	25	7	10	N/A	33	62	2
Overdue	0	4	8	2	3	N/A	1	9	1
% overdue	0.0%	10.3%	32.0%	28.6%	30.0%	N/A	3.0%	14.5%	50.0%

ACC OS Portfolio excludes Call Mgt & Training figures which are reported on separately. No police officers work within DoF Portfolio
From Jan 09 - SO Portfolio includes CJD, SO Portfolio and Projects Staff

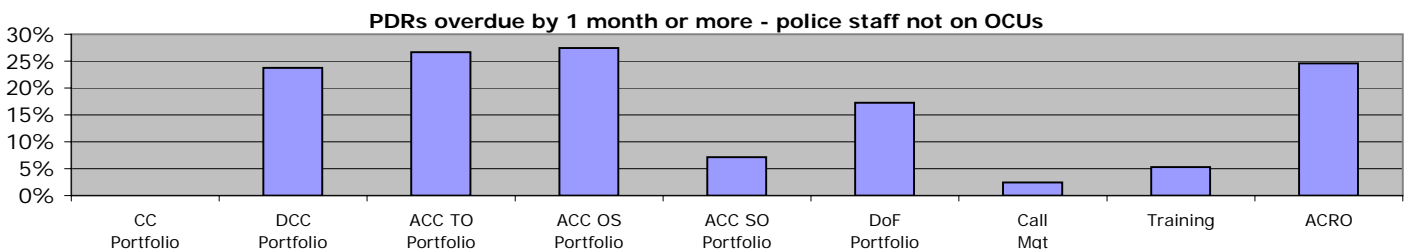
Police staff PDRs - police staff in OCUs



March 2009	Central	Isle of Wight	North&East	Portsmouth	Southampton	Western	Crime	Operations
Population	238	104	197	178	213	198	289	137
Overdue	14	13	2	3	3	10	5	3
% overdue	5.9%	12.5%	1.0%	1.7%	1.4%	5.1%	1.7%	2.2%

From January 09 "Operations" no longer includes SO Portfolio and Projects Staff

Police staff PDRs - police staff not in OCUs



March 2009	CC Portfolio	DCC Portfolio	ACC TO Portfolio	ACC OS Portfolio	ACC SO Portfolio	DoF Portfolio	Call Mgt	Training	ACRO
Population	2	282	30	62	365	145	412	94	57
Overdue	0	67	8	17	26	25	10	5	14
% overdue	0.0%	23.8%	26.7%	27.4%	7.1%	17.2%	2.4%	5.3%	24.6%

ACC OS Portfolio excludes Call Mgt & Training figures which are reported on separately
From Jan 09 - SO Portfolio includes CJD, SO Portfolio and Projects Staff

Organisational management

Minority Ethnic Officer Recruitment

	All recruits	Minority ethnic recruits	%
YTD March 2009	81	2	2.5%

Female Officer Representation

	Male strength	Female strength	%
YTD March 2009	2726.0	1016.0	27.2%

NCRS compliance

	Central	Isle of Wight	North & East	Portsmouth	Southampton	Western	Crime
NCRS audits	Fair 82%	Fair 82%	Fair 84%	Poor 72%	Poor 64%	Fair 85%	No data

Note: NCRS audit data relates to a rolling 12 mth period

Self-Inspection	91.0%	85.0%	80.0%	66.0%	81.0%	90.0%	No data

Note: Self-Inspections - only appealed records are moderated by the Force Crime Registrar

Budget spend

The actual spend to the end of February 2009 was £261.3m. The projected spend for the force at the end of the financial year is £293.7m, which will be an underspend of £0.6m against the agreed budget.

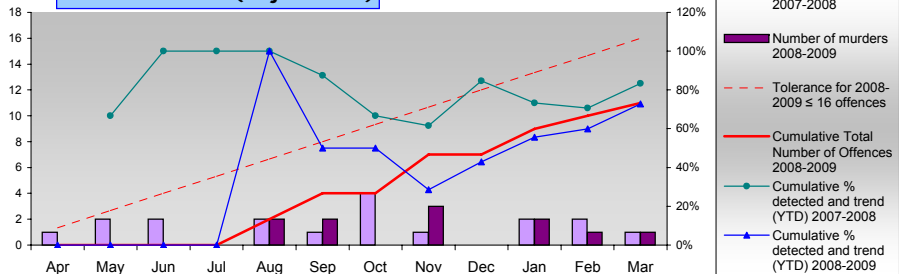
	Central	Isle of Wight	North & East	Portsmouth	Southampton	Western	Crime	Operations
Projected overspend 2008/2009	-£96,000	-£78,000	£453,000	£445,000	-£8,000	-£352,000	-£118,000	£371,000

Efficiency savings

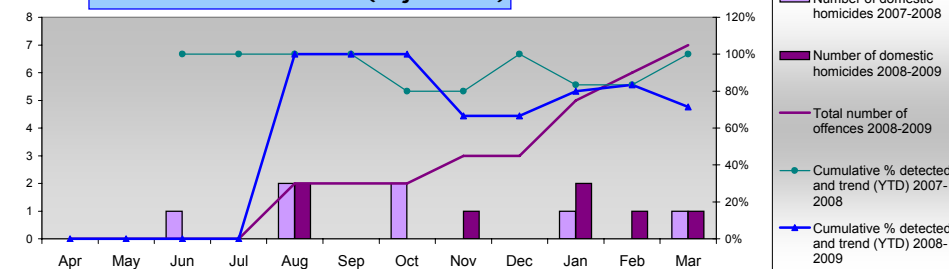
The Authority needs to maximise efficiency gains both due to its budgetary constraints and in order to achieve value for money. In addition, there is a national Home Office target to deliver recurring efficiency or productivity gains equivalent to 9.3% of the 2007/08 'Gross Revenue Expenditure' by the end of 2010/11. Each Authority must set its own challenging target. The Authority and Force are currently working to a target equivalent to the national target, which equates to £30m over the 3 years (an average of £10m per annum).

Specialist Operations - 7 OCU

Murder Offences (Major Crime)



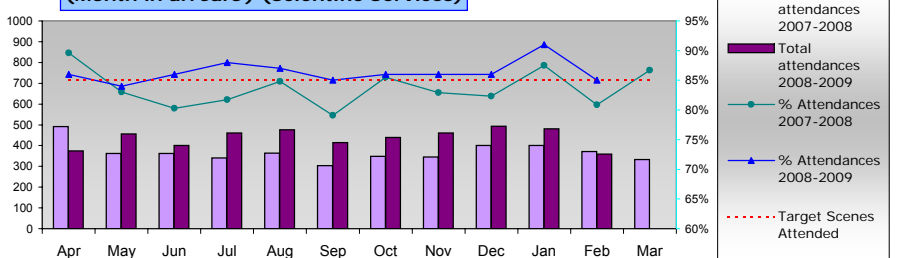
Domestic Murder Offences (Major Crime)



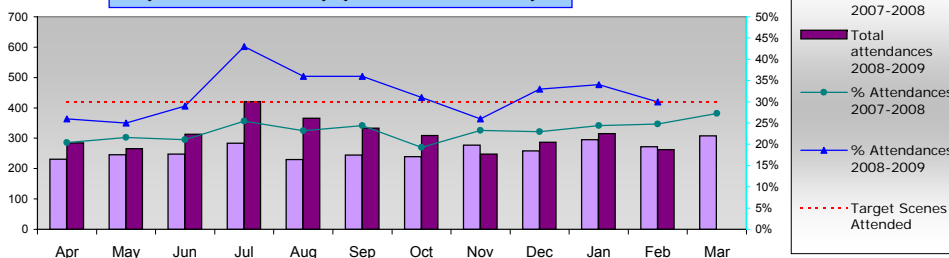
All murder offences this year compared to last year and detection rates
 The target is no more than 16 offences for the current year
 Detection target for murder is 100%

Domestic murder offences this year compared to last year and detection rates
 Detection target for murder is 100%

CSI attendance at dwelling burglaries (Month in arrears) (Scientific Services)



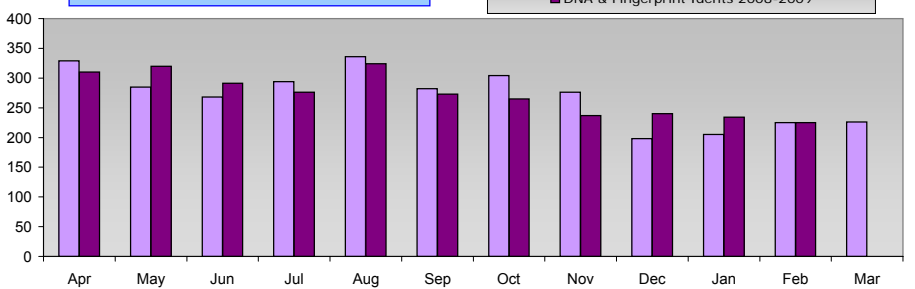
CSI attendance at thefts from motor vehicles (Month in arrears) (Scientific Services)



Burglary dwelling scene attendance rates. Target is no less than 85%

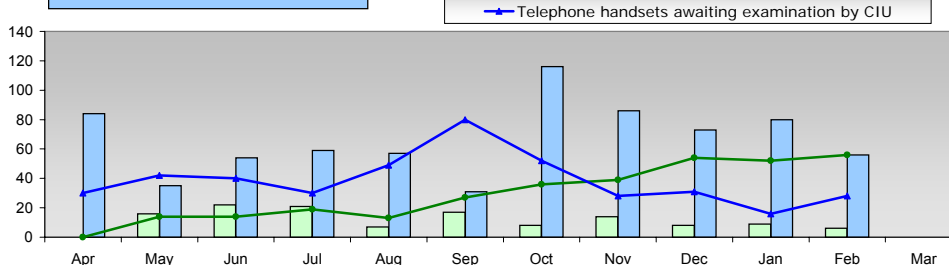
Theft from motor vehicle scene attendance rates. Target is no less than 30%

Combined DNA & fingerprint identifications (Scientific Services)



Combined DNA & fingerprint identifications this year compared to last year

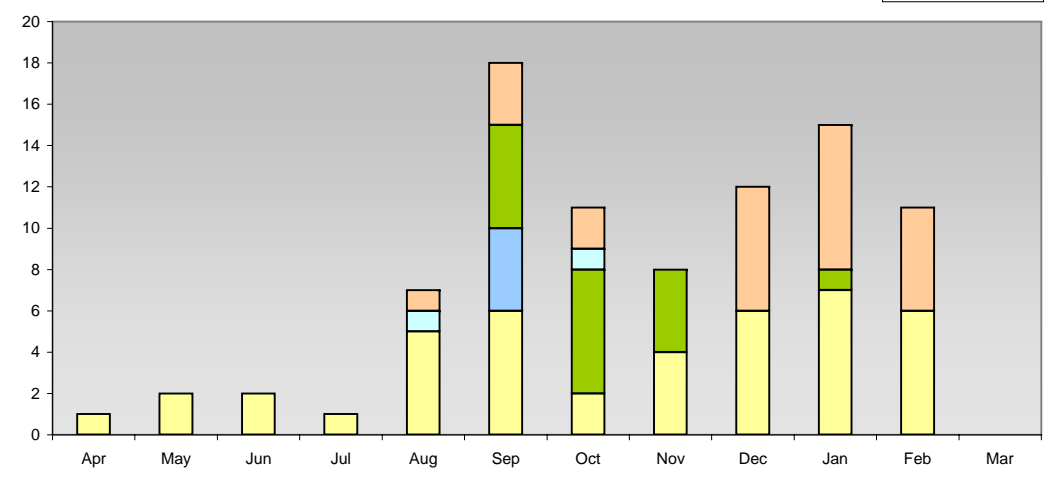
Forensic examination of seized items (Month in arrears) Scientific Services



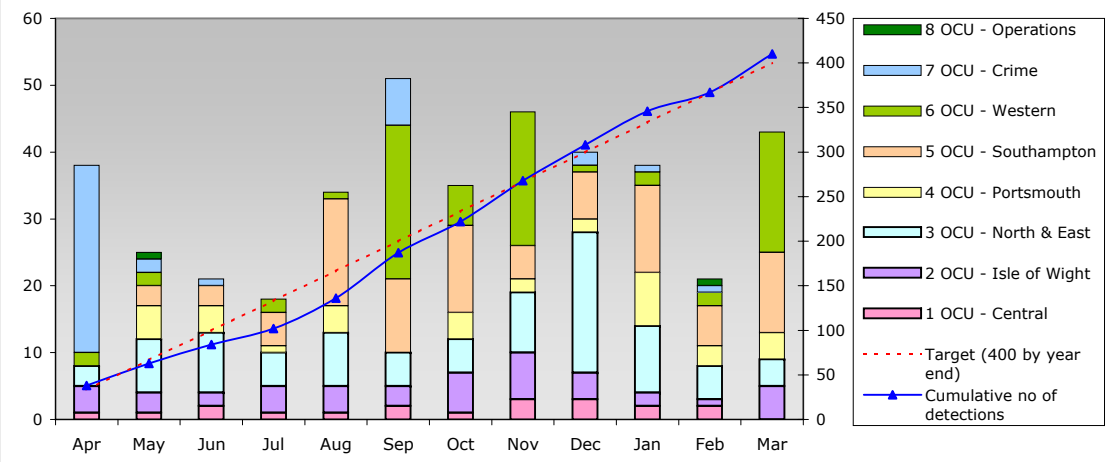
Number of cases started & cases awaiting examination by HTC
 NB: Cases include all computing equipment not just computers (eg monitors, drives, etc...)

Number of telephone handsets examined & telephone handsets awaiting examination by CIU

Major incidents showing 'SO' units providing assistance/resources provided to 'TO'



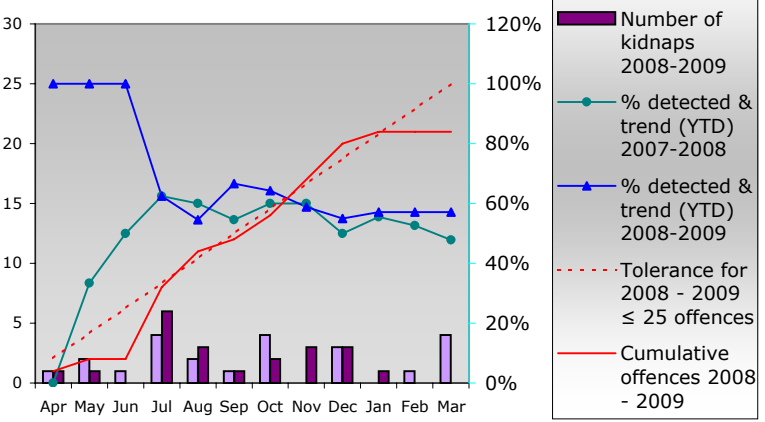
Number of Class A drug supply detections



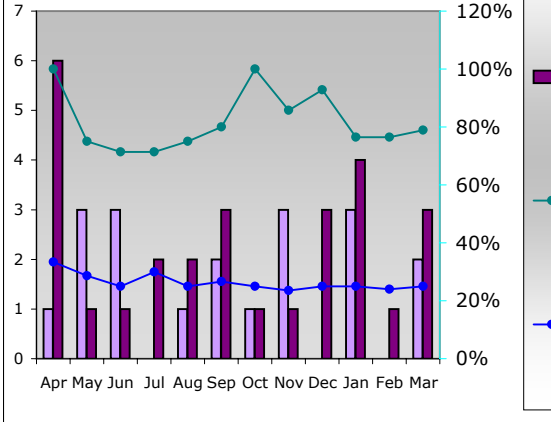
Serious/major incidents where 'SO' expertise or resources were utilised to assist or manage the investigation

Number of detections for offences of Class A drug supply by month by OCU and total detections to date compared with Force target of 400 for year.

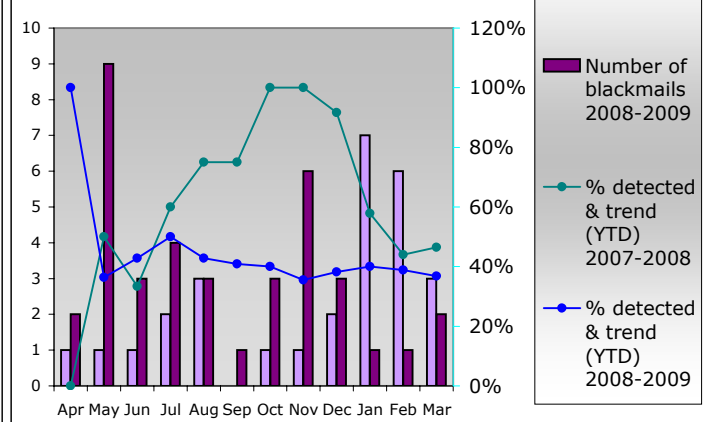
Kidnaps (Serious and Organised Crime Unit)



Abductions (Serious and Organised Crime Unit)



Blackmails (Serious and Organised Crime Unit)



All kidnaps within force this year compared to last year and detection rates. Target for 2008/09 is no more than 25 offences (10% reduction on 2007/08)

All abductions within force this year compared to last year and detection rates

All blackmails within force this year compared to last year and detection rates.

Specialist Operations - 8 OCU

8 OCU Commitment to Pre-Planned Operations - March 09

Op. Name	OCU Supported							Total
	1	2	3	4	5	6	Other	
Nemesis	9	6	66	75	11	11	0	178
Viper	0	8	3	0	0	0	8	19
Helium	0	0	0	0	0	10	0	10
Other	30	16	15	23	32	23	3	142
Total Ops.	39	30	84	98	43	44	11	349
Arrests	6	7	9	14	21	8	0	65
FPNs	1	0	6	9	3	3	0	22
Seizures	0	0	0	15	0	0	0	15
Other	2	16	9	49	37	28	0	141
Total Results	9	23	24	87	61	39	0	243

8 OCU Commitment to ANPR Operations - March 09

	OCU Supported							Total
	1	2	3	4	5	6	Other	
No. of Ops	16	0	1	5	0	1	4	27
Arrests	8	0	3	3	0	0	0	14
FPNs	29	0	0	8	0	3	0	40
Seizures	34	0	5	15	0	2	0	56
Other	80	0	1	30	0	2	0	113
Total Results	151	0	9	56	0	7	0	223

Interventions in support of OCUs and Force Strategy YTD

	Persons Arrested	February 2009 Incidents attended*1			FPNs*2		S165 Vehicle Seizures*3
		Total	% DSP	% ONS	Disorder	Other	
ASU	2	Data given as a whole for 8 OCU				1	
DSU	387				7	146	
FSU	642				16	23	
MSU	27				0	5	
OPPU	1				0	4	
SFO	254				1	113	
ARV	1262				17	1724	
RPU	2006				8	20862	
Total	4581	39490	12.41%	7.47%	49	22878	4161

Data is not currently available for the above headings therefore figures are given for April 2008 to February 2009 inclusive.

*1 Altaris data - Dispatch (DSP) and Arrival (ONS) of 8 OCU units as a percentage of Grade 1 and 2 incidents 8 OCU units were OnScene at 60.16% of those incidents they were dispatched to.

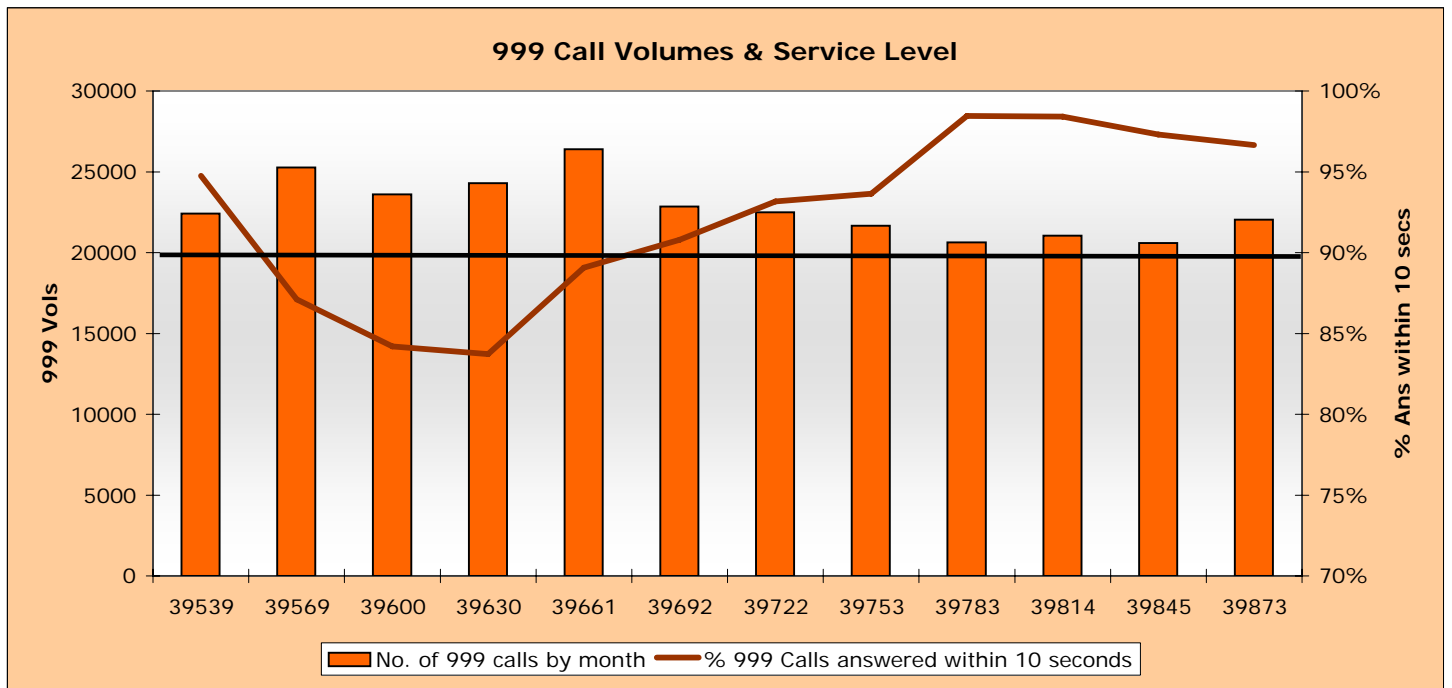
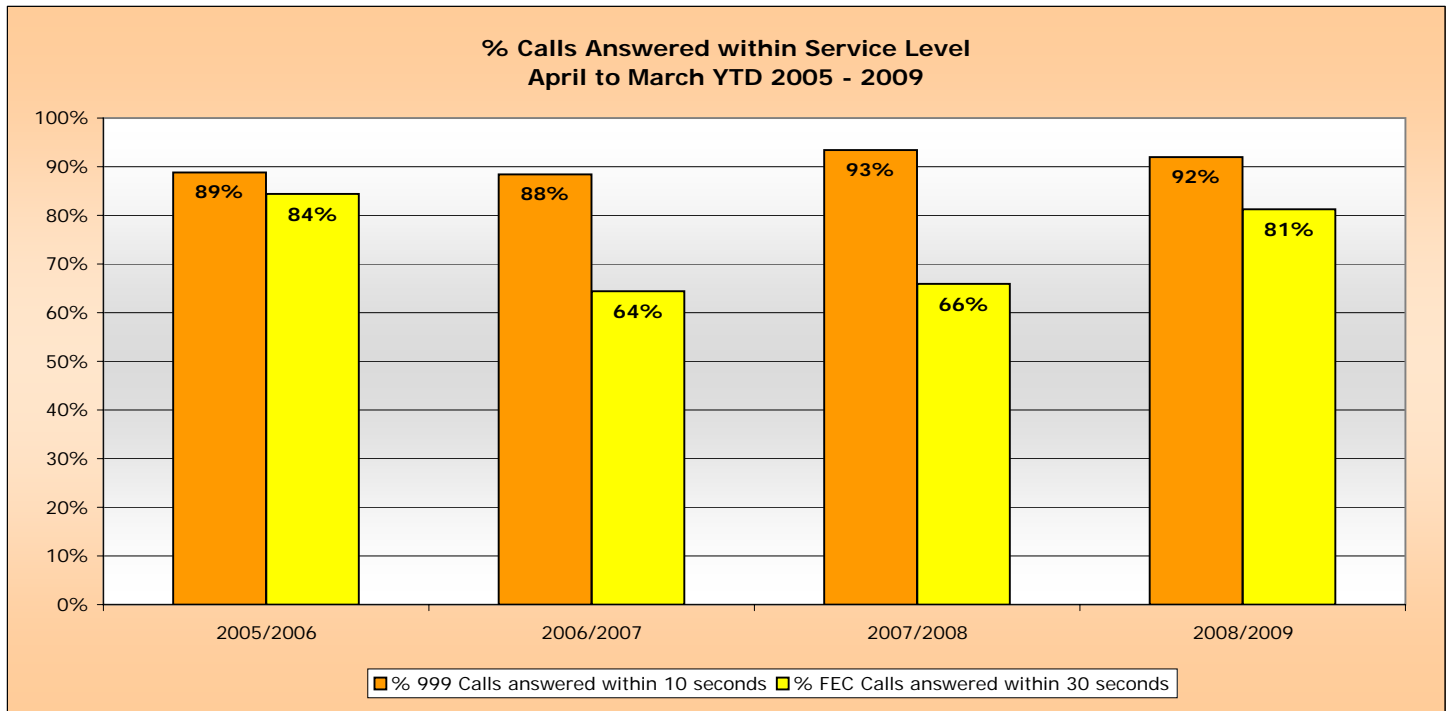
8 OCU units currently equate to 11% of the Force frontline operational officers.

*2 FPNs are Fixed Penalty Notices issued.

*3 Vehicles seized under Section 165 of the Road Traffic Act are for No Insurance or No Driving Licence.

Operational Services

The March service level for 999 calls was 96.65% which brings the YTD to 91.96% compared to a target of 90%. The FEC achieved a service level of 87%, which brought their YTD service level to 81.23% - the highest year end figure since 2005/2006.



Victim focus

Hampshire Constabulary has always valued victim care. With the introduction of the Policing Pledge, this section will be used not only to inform how we manage our victims of crime, but our progress and actions that relate to the Pledge.

Particular emphasis surrounds compliance with the Victims' Code - keeping people updated - and it is this area that is currently reported on. Other commitments from the Pledge will be periodically reported on.

APACS indicators for user satisfaction

iQuanta data for MSG for the 12 months up to December 2008

Crime type	MSG position	1st in MSG
<u>Vehicle crime</u>		
Ease of contact	2/8	Hertfordshire
Actions taken	4/8	Essex
Follow up	4/8	Hertfordshire
Treatment	4/8	Hertfordshire
OVERALL	5/8	Hertfordshire
<u>Burglary</u>		
Ease of contact	2/8	Hertfordshire
Actions taken	2/8	Hampshire
Follow up	1/8	Hampshire
Treatment	3/8	Hertfordshire
OVERALL	3/8	Hertfordshire
<u>Violent crime</u>		
Ease of contact	1/8	Hampshire
Actions taken	5/8	Kent
Follow up	6/8	Kent
Treatment	5/8	Hertfordshire
OVERALL	5/8	Sussex
<u>RTC</u>		
Ease of contact	1/8	Hampshire
Actions taken	2/8	Hertfordshire
Follow up	3/8	Hertfordshire
Treatment	2/8	Hertfordshire
OVERALL	2/8	Hertfordshire
<u>All users (excluding racist incidents)</u>		
Ease of contact	2/8	Hertfordshire
Actions taken	4/8	Hertfordshire
Follow up	3/8	Hertfordshire
Treatment	3/8	Hertfordshire
OVERALL	3/8	Hertfordshire

Victim Focus

Summary results of Dip-sample Victim Code Compliance checks (latest month for available data followed by YTD)

% where victim was informed within 5 days of an investigation being closed

	Central	Isle of Wight	North & East	Portsmouth	Southampton	Western	Force
February 2009	100%	95%	95%	No data provided	100%	No data provided	No data provided
YTD	100%	98%	96%	No data provided	99%	No data provided	No data provided

% where the victim has been updated on a monthly basis (if applicable)

	Central	Isle of Wight	North & East	Portsmouth	Southampton	Western	Force
February 2009	100%	50%	100%	No data provided	100%	No data provided	No data provided
YTD	98%	65%	80%	No data provided	100%	No data provided	No data provided

% where the victim was notified upon filing (if applicable)

	Central	Isle of Wight	North & East	Portsmouth	Southampton	Western	Force
February 2009	100%	95%	95%	No data provided	100%	No data provided	No data provided
YTD	100%	93%	87%	No data provided	100%	No data provided	No data provided

Victim support status for crimes

Month of Mar 2009	Central	Isle of Wight	North & East	Portsmouth	Southampton	Western	Force	Force %
Victim informed of VSS accepted	275	55	219	171	399	230	1349	9.76%
Victim informed of VSS declined	1767	482	1553	1242	1752	1343	8139	58.88%
VSS aware	113	18	43	15	23	102	314	2.27%
Victimless crime	725	174	635	652	658	568	3412	24.69%
Not stated	7	21	166	154	152	108	608	4.40%
Total crimes	2887	750	2616	2234	2984	2351	13822	N/A
% referred	13.44%	9.73%	10.02%	8.33%	14.14%	14.12%	12.03%	N/A

YTD to Feb 2009	Central	Isle of Wight	North & East	Portsmouth	Southampton	Western	Force	Force %
Victim informed of VSS accepted	3035	704	2446	1713	3993	2901	14792	9.28%
Victim informed of VSS declined	20887	6699	19349	14730	21457	17757	100879	63.29%
VSS aware	1024	120	589	277	368	658	3036	1.90%
Victimless crime	7600	2648	7322	7351	7256	6574	38751	24.31%
Not stated	19	83	466	875	383	119	1945	1.22%
Total crimes	32565	10254	30172	24946	33457	28009	159403	N/A
% referred	12.46%	8.04%	10.06%	7.98%	13.03%	12.71%	11.18%	N/A