



Performance Summary June 2008

Summary

This document contains a strategic overview of the Constabulary's performance. It has a variety of performance measures within it, but for the first time our performance is aligned to the Force Control Strategy.

It is a headline document that will enable our customers, both internally and externally, to easily assess performance in key domains. Additionally with the introduction of the national performance framework called the Assessment of Police and Community Safety (APACS), it is crucial that we become focused and more accountable.

At the front of the document there are several matrices that reflect our performance against our targets, firstly year to date and secondly relevant for that particular month.

Performance in key areas is then explored in more depth with an indication of where each measure has originated - for example, APACS Statutory Performance Indicator (SPI) or a Force Control Strategy measure.

This document is then taken forward by key stakeholders within the organisation to the Force Performance Review Group, where it is used to highlight areas of both best practice and those for development.

This is an evolving document and as such, the content may alter over time and any feedback would be welcomed by the Performance Review Team.

Index

Page

Year to date performance matrix

4-5

Monthly performance matrix

5-7

including notes on matrices terminology

Safer Neighbourhoods

8	Overall satisfaction	SPI 1.1	FCS	Consultation & Research Team
8	Being kept informed		FCS	Consultation & Research Team
8	Comparative satisfaction of minority ethnic groups	SPI 1.2		Consultation & Research Team
8	Satisfaction of victims of racist incidents	SPI 1.3		Consultation & Research Team
8	Confidence in local police	SPI 2.3	FCS	iQuanta - Quarterly
8	Understanding community issues		FCS	iQuanta - Quarterly
8	Perception of anti-social behaviour	SPI 4.1		iQuanta - Quarterly
8	Perception of drug use in local area	SPI 4.3	FCS	iQuanta - Quarterly
8	Perception of drunk or rowdy behaviour	SPI 4.2		iQuanta - Quarterly
9	Assault with less serious injury	SPI 5.3	FCS	Business Objects
10	Successful neighbourhood priorities		FCS	Neighbourhood Policing Lead - ACC 'TO' Dept
10	Anti-social use of motor vehicle (NSIR)		FCS	Performance Review Team - NSIR Return
10	Anti-social behaviour (NSIR)		FCS	Performance Review Team - NSIR Return
11	Criminal damage		FCS	BO

Safeguard people

12	DV Incident arrest rate		FCS	BO - Following IT Development Work
12	DV victimisation		FCS	N/A
12	Repeat victims of domestic violence		FCS	BO - Following IT Development Work
12	Domestic violence OBJT rate		FCS	Criminal Justice Department
12	Hate crime detection rate		FCS	BO - Following IT Development Work
12	Sexual offender reoffending rate		FCS	N/A

Protect our communities

13	Number of Rainbow visits		FCS	N/A
13	Dangerous sites assessed as green		FCS	N/A
13	Road traffic casualties	SPI 9.1	FCS	8 OCU Performance Team

Prevent, reduce and detect crime

14	Serious violent crime and sanction detections	SPI 5.1	FCS	BO
15	All crime		FCS	BO
16	Serious acquisitive crime and sanction detections	SPI 5.2	FCS	BO
17	Gun crime rate	SPI 5.5		BO
17	Knife crime rate	SPI 5.6		BO
17	Serious sexual crime OBJT rate	SPI 6.4	FCS	Criminal Justice Department
17	Murder offences		FCS	BO
17	Asset recovery	SPI 8.1	FCS	Specialist Investigation Department
17	PPO convictions	SPI 10.1	FCS	Criminal Justice Department
17	Class A drugs sanction detections		FCS	BO - 'Class A Drug Report' (
17	Drug Intervention Measures (DIMs)			Force Intelligence Development Unit DS

Organisational management

18	Police officer sickness	SPI 13.1	FCS	PRT - Delphi + Personnel - Staffing Figures
19	Police staff sickness	SPI 13.2	FCS	PRT - Delphi + Personnel - Staffing Figures
20	Overdue PDRs			Personnel
21	Minority Ethnic Officer Recruitment	SPI 3.1		Personnel
21	Female Officer Representation	SPI 3.2		Personnel
21	NCRS compliance		FCS	Force Incident & Crime Registrar

Specialist Operations - 7 OCU

22 Murder & domestic murder offences (SPI 5.4), CSI attendance, DNA & fingerprint identifications, forensic examinations

Specialist Operations - 8 OCU

23 Patrol availability, pre-planned operations, ANPR operations, Interventions in support of OCUs & Force Strategy

Operational Services

24 Performance highlights relating to Operation Services Departments which include Call Management, Criminal Justice Department and Personnel and Training

Restricted data

25

FCS = Force Strategy

BO = Business Object

PRT = Performance Review Team

SPI - Statutory Performance Indicator

Year to date performance matrix

This matrix is based on year to date comparison with 2007/2008 performance

		Target	Actual	Central	Isle of Wight	North & East	Portsmouth	Southampton	Western	Crime	Operations	
Safer Neighbourhoods	Overall satisfaction	>62%	60.0%	63.0%	65.0%	56.0%	58.0%	59.0%	62.0%	N/A		
	Being kept informed	>60%	45.0%	46.0%	50.0%	42.0%	42.0%	44.0%	47.0%	N/A		
	Confidence in local police	>58.25	57.4%	Force level target - to exceed MSG average by 5% whilst not declining on current performance								
	Understanding community issues	>66.5	64.2%	Force level target - to exceed MSG average by 3.5% whilst not declining on current performance								
	Perception of drug use in local area	<22.6	23.0%	Force level target - be under MSG average whilst not declining on current performance								
	Assault with less serious injury*	-5.0%	11.1%	5.3%	0.0%	18.5%	-9.1%	34.3%	1.5%	N/A		
	OCU specific targets				-5.91%	-4.52%	0.00%	-4.00%	-8.69%	-4.21%	N/A	
	Successful neighbourhood priorities	>33%		Data will be available in September 2008								
	Anti-social use of motor vehicle	-5.0%	-6.5%	1.7%	-14.2%	-16.6%	-15.8%	-11.9%	17.7%	N/A		
	Anti-social behaviour	-5.0%	-5.7%	-0.9%	-0.2%	-1.8%	-10.1%	-11.9%	-5.4%	N/A		
	Reduce criminal damage	-12%	-7.4%	-8.6%	-8.0%	-6.6%	-1.6%	-13.0%	-4.0%	N/A		
Safer Neighbourhoods - targets achieved			2	1	2	1	3	3	2			
Safeguard people	Domestic violence incident arrest rate	>35%	No data	No data	No data	No data	No data	No data	No data	N/A		
	Domestic violence victimisation	Placeholder		Placeholder							N/A	
	Repeat victims of domestic violence	-5.0%	No data	No data	No data	No data	No data	No data	No data	N/A		
	Domestic violence OBTJ rate	Placeholder		Placeholder							N/A	
	Hate crime detection rate	>45%	28.1%	20.2%	23.7%	35.6%	21.7%	39.9%	28.0%	N/A		
	Sexual offender reoffending rate	Placeholder		Placeholder								
Safeguard people - targets achieved			0	0	0	0	0	0	0			
Protect our communities	Number of Rainbow visits	Placeholder		Placeholder								
	Dangerous sites assessed as green	Placeholder		Placeholder								
	Road traffic casualties	<157	116	Owned by Operations OCU								
Protect our communities - targets achieved			1								1	

Year to date performance matrix cont'd

This matrix is based on year to date comparison with 2007/2008 performance

		Target	Actual	Central	Isle of Wight	North & East	Portsmouth	Southampton	Western	Crime	Operations		
Prevent, reduce and detect crime	Serious violent crime	-6.0%	-10.8%	41.5%	33.3%	-41.3%	-28.3%	-32.3%	0.0%	N/A			
	Serious violent crime SD	>50%	48.2%	36.0%	90.0%	70.4%	47.4%	40.5%	40.0%	N/A			
	All crime*		-3.0%	-1.6%	-0.1%	2.2%	-1.2%	-3.8%	-3.1%	-1.7%	N/A		
		OCU specific targets			-2.3%	-2.3%	-1.5%	-1.5%	-4.3%	-5.3%	N/A		
	Serious acquisitive crime*		-2.0%	-8.9%	-12.4%	2.8%	-8.4%	-19.9%	-0.3%	-6.9%	N/A		
		OCU specific targets			-1.39%	-2.11%	-2.38%	-1.36%	-2.27%	-2.48%	N/A		
	Serious acquisitive crime SD	>15%	10.2%	11.9%	12.8%	10.4%	11.3%	7.5%	10.3%	N/A			
	Serious sexual crime OBTJ rate	Placeholder		Placeholder									
	Murder offences	<4	1	Owned by Crime OCU							1	Owned by Crime OCU	
	Asset recovery (shown in £1000s)	£1,030.6	£356.5	This is a Force measure									
	PPO reoffending rate	Placeholder		Placeholder									
Class A drugs SD	>100	80	Owned by Crime OCU							80	Owned by Crime OCU		
Prevent, reduce and detect crime - targets achieved		3		1	1	3	3	1	1	1			
Organisational management	Police officer sickness	<1.88	2.15	2.19	2.02	1.32	2.71	2.48	2.46	1.74	2.44		
	Police staff sickness	<1.88	2.13	2.17	3.09	2.09	3.06	2.28	2.20	1.59	1.57		
	NCRS compliance	Good	N/A		Fair	Fair	Fair	Poor	Poor	Fair	N/A		
		90.0%			82%	82%	84%	72%	64%	85%	No data		
	Budget spend	<17%	16%	16%	13%	16%	16%	16%	15%	15%	15%	16%	
	Efficiency savings	>£10m	£2.44m	This is a Force measure									
Organisational management - targets achieved		1		1	1	2	1	1	1	3	2		
Force Total - targets achieved		7		3	4	6	7	5	4	4	3		

Monthly performance matrix

This matrix is based on monthly data compared to force target

		Target	Actual	Central	Isle of Wight	North & East	Portsmouth	Southampton	Western	Crime	Operations
Safer Neighbourhoods	Assault with less serious injury*	< 1126	1301	247	84	211	136	403	220	N/A	
		OCU specific targets		238.0	76.4	198.3	157.8	275.3	179.6	N/A	
	Successful neighbourhood priorities	> 33%		Data will be available in September 2008							
	Anti-social use of motor vehicle	< 1410	1685	354	94	323	135	275	451	N/A	
		OCU specific targets		302.5	94.5	269.4	139.0	252.2	279.6	N/A	
	Anti-social behaviour	< 7843	9629	2093	720	1714	1413	2043	1524	N/A	
		OCU specific targets		1647.1	575.0	1346.3	1227.5	1674.6	1246.5	N/A	
	Reduce criminal damage	< 2814	2976	641	223	597	382	622	511	N/A	
		OCU specific targets		615.0	220.8	507.0	350.4	600.4	520.5	N/A	
	Safer Neighbourhoods - targets achieved			0	0	1	0	2	0	1	
Safeguard people	Domestic violent incident arrest rate	> 35%	No data	No data	No data	No data	No data	No data	No data	N/A	
	Domestic violence victimisation	Placeholder		Placeholder							
	Repeat victims of domestic violence	-5.0%	No data	No data	No data	No data	No data	No data	No data	N/A	
	Domestic violence OBTJ rate	Placeholder		Placeholder							
	Hate crime detection rate	> 45%	29.1%	11.6%	16.7%	23.1%	29.8%	44.6%	36.4%	N/A	
	Sexual offender reoffending rate	Placeholder		Placeholder							
Safeguard people - targets achieved			0	0	0	0	0	0	0		
Protect our communities	Number of Rainbow visits	Placeholder		Placeholder							
	Dangerous sites assessed as green	Placeholder		Placeholder							
Protect our communities - targets achieved											

Monthly performance matrix cont'd

This matrix is based on monthly data compared to force target

		Target	Actual	Central	Isle of Wight	North & East	Portsmouth	Southampton	Western	Crime	Operations	
Prevent, reduce and detect crime	Serious violent crime	<72	79	38	5	7	11	12	6	N/A		
	OCU specific targets				12.6	6.7	12.2	13.9	20.4	6.4	N/A	
	Serious violent crime SD	>50%	53.2%	31.6%	120.0%	128.6%	81.8%	33.3%	33.3%	N/A		
	All crime*	<13150	14125	2865	1288	2606	2097	2878	2391	N/A		
	OCU specific targets				2689.6	909.1	2469.5	2037.0	2779.2	2265.6	N/A	
	Serious acquisitive crime*	<1839	1846	301	91	302	342	453	357	N/A		
	OCU specific targets				325.5	78.1	359.6	301.6	409.1	365.3	N/A	
	Serious acquisitive crime SD	>15%	12.0%	15.0%	11.0%	7.9%	18.1%	7.7%	12.9%	N/A		
	Serious sexual crime OBJT rate	Placeholder		Placeholder								
	Asset recovery	£344,483	£230,149	This is Force measure								
PPO reoffending rate	Placeholder		Placeholder									
Class A drugs SD	>33	18	Owned by Crime OCU							18	Owned by Crime OCU	
Prevent, reduce and detect crime - targets achieved			1	1	2	3	3	1	2	0		
Organisational management	Police officer sickness	<0.63	0.51	0.54	0.84	0.26	0.36	0.67	0.66	0.64	0.35	
	Police staff sickness	<0.63	0.61	0.79	1.05	0.17	0.90	0.26	0.44	0.52	0.62	
Organisational management - targets achieved			2	1	0	2	1	1	1	1	2	
Force Total - targets achieved			3	2	3	5	6	2	4	1	2	

Notes to be read in conjunction with matrices

All citizen focus data
Road traffic casualties
Budget spend
Efficiency savings
Placeholder
SD
Anti-social use of motor vehicle & behaviour
Sickness data

OCU specific targets

Asset recovery

* = variable targets across OCUs for these target areas based on previous performance and MSG position

Based on "completely or very satisfied"
 All data until 31 May 2008
 Data is always one month in arrears
 3 year target of £30m, notionally £10m per year
 Target and supporting information to be confirmed
 Sanction detections
 Data is obtained from NSIR and always 1 month in arrears
 Force Actual = total for ALL officers/police staff - including those not in OCU
 OCU specific targets are rounded to 1 decimal place, the actual figure may therefore seem the same but appear red due to this rounding
 Asset recovery is the sum total of the values of cash forfeitures and confiscation orders

Safer Neighbourhoods

Overall satisfaction

Data relates to interviews which took place July 07- June 08
Overall Satisfaction (includes Burglary, Vehicle Crime, Violent Crime and RTCs)

Target 62%	Central	Isle of Wight	North & East	Portsmouth	Southampton	Western	Force
	63%	65%	56%	58%	59%	62%	60%
Number of surveys	9871						

Being kept informed

Data relates to interviews which took place July 07- June 08
Being Kept Informed (includes Burglary, Vehicle Crime, Violent Crime and RTCs)

Target 60%	Central	Isle of Wight	North & East	Portsmouth	Southampton	Western	Force
	46%	50%	42%	42%	44%	47%	45%
Number of surveys	9613						

Comparative satisfaction of minority ethnic groups

Data relates to interviews which took place July 07- June 08
These figures are for overall satisfaction for Burglary, Vehicle Crime, Violent Crime & RTCs it excludes Racist Incidents

	Completely and very satisfied	Completely, very and fairly satisfied
White	60.4%	80.3%
Minority Ethnic	52.9%	75.3%

Satisfaction of victims of racist incidents

These figures are interviews which took place May 07-Apr 08 these will be updated quarterly
Racist incident overall satisfaction - % completely or very satisfied

	Central	Isle of Wight	North & East	Portsmouth	Southampton	Western	Force
%	46%	60%	75%	66%	47%	79%	60%
Number of surveys	26	10	24	44	55	28	187

British Crime Survey data

This data is updated by iQuanta approximately every quarter.

Data 12 mths to December 2007	Confidence in local police		Understanding community issues		Targets	
Avon & Somerset	49.5%		57.9%		MSG = Most Similar Group	
Bedfordshire	50.5%		63.9%		Confidence in local police	
Essex	53.8%		61.5%		To exceed MSG by 5% whilst maintaining performance	
Hampshire	57.4%	1st in MSG	64.2%	2nd in MSG	Understanding community issues	
Hertfordshire	56.4%		67.2%		To exceed MSG by 3.5% whilst maintaining performance	
Kent	49.8%		60.6%		Perception of drug use	
Sussex	52.2%		60.4%		To be under MSG whilst maintaining performance	
Thames Valley	56.4%		61.4%			
MSG	53.3%		63.0%			

Data 12 mths to December 2007	Perception of antisocial behaviour		Perception of drug use		Perception of drunk or rowdy behaviour	
Avon & Somerset	13.9%		22.9%		23.7%	
Bedfordshire	17.2%		24.7%		21.4%	
Essex	10.0%		17.3%		19.8%	
Hampshire	15.6%	5th in MSG	23.0%	5th in MSG	28.2%	8th in MSG
Hertfordshire	13.8%		24.7%		23.9%	
Kent	15.6%		21.8%		21.7%	
Sussex	15.2%		22.3%		24.6%	
Thames Valley	17.0%		26.3%		27.2%	
MSG	15.1%		22.6%		23.7%	

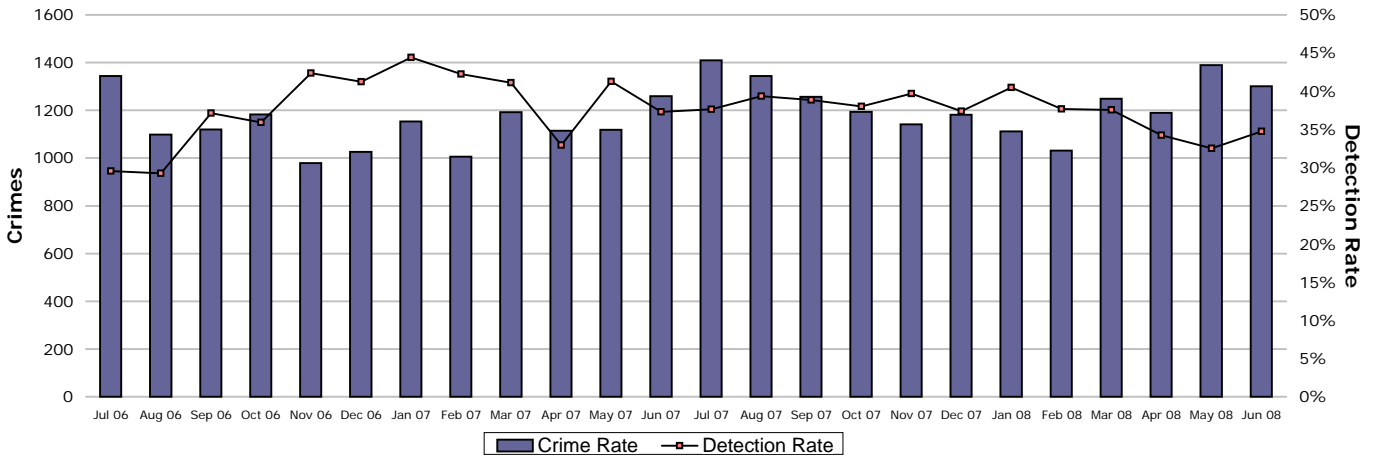
The target for the three areas below is not to decline against previous performance

	Dec 2007	Mar 2008	Jun 2008	Sep 2008	Dec 2008
Confidence in local police	57.4%	Awaiting data from iQuanta			
Understanding community issues	64.2%	Awaiting data from iQuanta			
Perception of drug use	23.0%	Awaiting data from iQuanta			

Safer Neighbourhoods

Assault with less serious injury

Assault with less serious injury consists of crimsec codes 8G and 8J



Crimes	Central	Isle of Wight	North & East	Portsmouth	Southampton	Western	Force
YTD Crimes	809	242	646	472	1107	604	3880
YTD Target	722.0	231.9	601.6	478.7	835.2	544.8	3414.1
YTD 07/08 Crimes	768	242	545	519	824	595	3493
This month	247	84	211	136	403	220	1301
% change from 07/08	5.34%	0.00%	18.53%	-9.06%	34.34%	1.51%	11.08%
MSG position	15 of 15	8 of 15	14 of 15	5 of 9	15 of 15	7 of 15	8 of 8



Detections	Central	Isle of Wight	North & East	Portsmouth	Southampton	Western	Force
YTD Detection Rate	34.98%	35.95%	37.62%	32.42%	27.46%	39.90%	33.79%
This month	33.60%	32.14%	38.39%	44.85%	27.54%	40.45%	34.74%
YTD 07/08 Detections	33.72%	51.65%	41.28%	29.48%	35.44%	41.18%	37.19%
MSG position	14 of 15	14 of 15	11 of 15	7 of 9	11 of 15	10 of 15	6 of 8

Note: Detections refer to Sanction Detections ONLY



Safer Neighbourhoods

Successful neighbourhood priorities

Data will be available in September 2008

Anti-social use of motor vehicle

Data to be provided a month in arrears. It is gathered using Altaris closing codes as the primary data source, then RMS as the secondary data source to gather incidents not recorded within Altaris.

The Force total does not add up to the sum of OCUs, this is due to Altaris incident logs which do not contain a geographic location. The April data is likely to change due to changes made to align the report to 08/09 guidance.

	Central	Isle of Wight	North & East	Portsmouth	Southampton	Western	Force
YTD Apr 08 to May 08	710	187	574	288	525	765	3164
YTD Apr 07 to May 07	698	218	688	342	596	650	3383
May	354	94	323	135	275	451	1685
YTD Target	615.0	192.2	547.8	282.6	512.9	568.6	2866.8
% v target	15.4%	-2.7%	4.8%	1.9%	2.4%	34.6%	10.4%
% change from 07/08	1.7%	-14.2%	-16.6%	-15.8%	-11.9%	17.7%	-6.5%

Anti-social use of motor vehicle - relates to NSIR category Vehicle Nuisance/Inappropriate Use within the Anti-Social Behaviour Grouping

Anti-social behaviour

Data to be provided a month in arrears. It is gathered using Altaris closing codes as the primary data source, then RMS as the secondary data source to gather incidents not recorded within Altaris.

The Force total does not add up to the sum of OCUs, this is due to Altaris incident logs which do not contain a geographic location. The April data is likely to change due to changes made to align the report to 08/09 guidance.

	Central	Isle of Wight	North & East	Portsmouth	Southampton	Western	Force
YTD Apr 08 to May 08	3980	1390	3343	2677	3933	2917	18479
YTD Apr 07 to May 07	4017	1393	3404	2977	4465	3082	19589
May	2093	720	1714	1413	2043	1524	9629
YTD Target	3349.2	1169.2	2737.5	2495.8	3405.0	2534.6	15947.9
% v target	18.8%	18.9%	22.1%	7.3%	15.5%	15.1%	15.9%
% change from 07/08	-0.9%	-0.2%	-1.8%	-10.1%	-11.9%	-5.4%	-5.7%

Anti-social behaviour - relates to NSIR categories Environmental Damage/Littering, Rowdy & Inconsiderate and Neighbours within the Anti-Social Behaviour Grouping

Safer Neighbourhoods

Criminal damage



Crimes	Central	Isle of Wight	North & East	Portsmouth	Southampton	Western	Force
YTD Crimes	2115	739	1762	1270	1937	1858	9681
YTD Target	1865.6	669.7	1537.8	1062.8	1821.2	1578.9	8536.0
YTD 07/08 Crimes	2315	803	1887	1290	2226	1936	10457
This month	641	223	597	382	622	511	2976
% change from 07/08	-8.64%	-7.97%	-6.62%	-1.55%	-12.98%	-4.03%	-7.42%
MSG position	13 of 15	15 of 15	11 of 15	6 of 9	15 of 15	13 of 15	8 of 8



Detections	Central	Isle of Wight	North & East	Portsmouth	Southampton	Western	Force
YTD Detection Rate	15.41%	11.64%	13.85%	9.61%	8.88%	10.66%	11.86%
This month	25.12%	10.76%	16.08%	12.83%	7.40%	12.92%	14.85%
YTD 07/08 Detections	9.37%	13.20%	11.39%	12.48%	12.58%	11.00%	11.40%
MSG position	11 of 15	13 of 15	12 of 15	7 of 9	13 of 15	14 of 15	8 of 8

Note: Detections refer to Sanction Detections ONLY



Safeguard people

Domestic violence incident arrest rate

Awaiting IT development

Domestic violence victimisation

Placeholder

Repeat victims of domestic violence

Awaiting IT development

Domestic violence OBTJ rate

The Office for Criminal Justice Reform is working on the breakdown as required within this Summary which will be available shortly. The Serious Sexual Offences measure includes the domestic violence OBTJ rate

OBTJ Crime category	OBTJ Rate	
	Apr-08	Rolling average
Tier 1: Serious Sexual Offences	30%	28%

Hate crime detection rate

Hate Crime includes all crimes flagged within RMS with a Hate Crime indicator excluding those flagged purely as Police or Domestic.

Target >45%

Year to Date	Central	Isle of Wight	North & East	Portsmouth	Southampton	Western	Force
Incidents	215	45	150	178	235	117	940
Crimes	168	38	87	180	173	93	739
Detections	34	9	31	39	69	26	208
Detection Rate	20.24%	23.68%	35.63%	21.67%	39.88%	27.96%	28.15%

Month	Central	Isle of Wight	North & East	Portsmouth	Southampton	Western	Force
Incidents	52	11	37	50	80	24	254
Crimes	43	12	26	47	56	22	206
Detections	5	2	6	14	25	8	60
Detection Rate	11.63%	16.67%	23.08%	29.79%	44.64%	36.36%	29.13%

Sexual offender reoffending rate

Placeholder

Protect our communities

Number of Rainbow visits

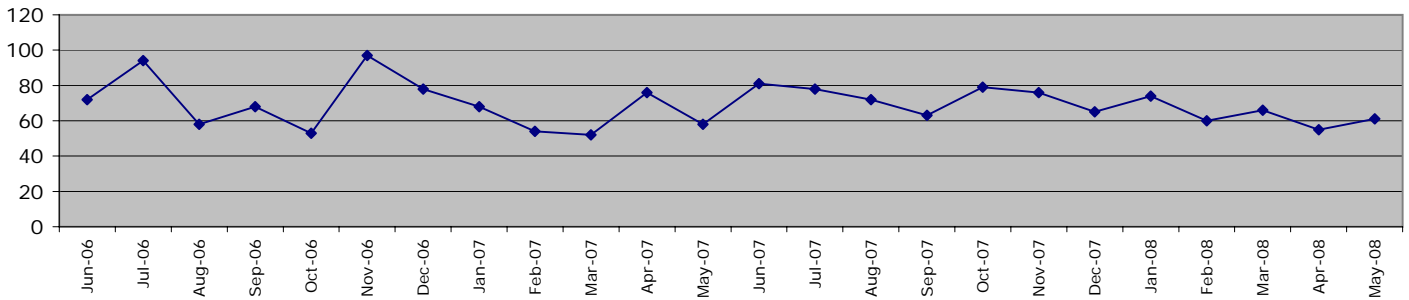
Placeholder

Dangerous sites assessed as green

Placeholder

Road traffic casualties

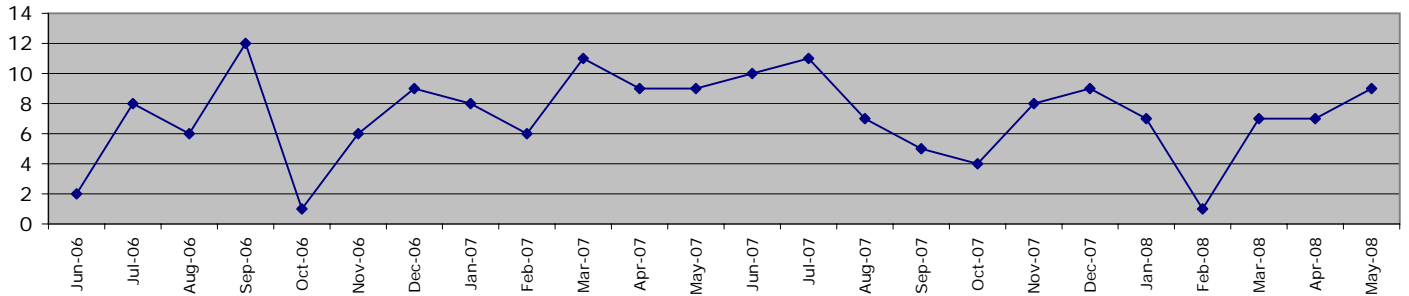
Fatal/serious injury casualties - all victims



The Force target 2008/2009 is for less than 938 casualties, which equates to less than 157 in 61 days YTD 31 May 2008 = 116 casualties

	Central	Isle of Wight	North&East	Portsmouth	Southampton	Western	Force
1 April 2008 - 31 May 2008	19	13	26	14	12	32	116
of these, fatalities were	1	3	1	0	0	2	7
1 April 2007 - 31 May 2007	37	14	29	8	8	38	134

Fatal/serious injury casualties - victims under 16 years



The DETR target is for a 50% reduction in child casualties by 2010 from 164 to 82 (Target 2008/2009 = 94)

	Central	Isle of Wight	North&East	Portsmouth	Southampton	Western	Force
1 April 2008 - 31 May 2008	3	3	4	3	1	2	16
of these, fatalities were	0	0	0	0	0	0	0
1 April 2007 - 31 May 2007	6	1	4	2	1	4	18

NOTE: YTD numbers may change as the accident record data are updated each month

NOTE: The casualties in East Hampshire have all been attributed to North & East OCU in the absence of a breakdown by OCUs

Prevent, reduce and detect crime

Serious violent crime

Serious violent crime consists of crimsec codes 1, 2, 4.1-4.4, 4.6, 4.8, 5A, 5B, 5C, 8F, 8H and 37.1

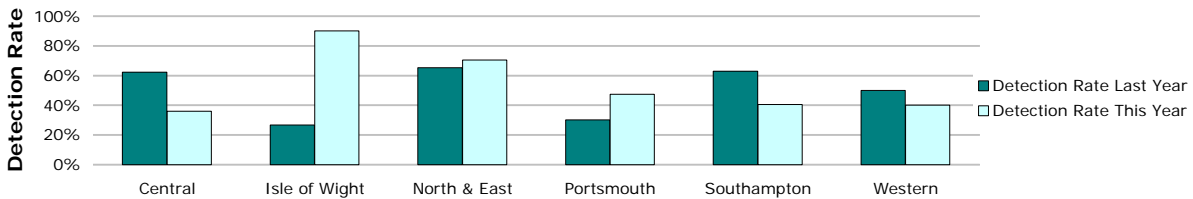


Crimes	Central	Isle of Wight	North & East	Portsmouth	Southampton	Western	Force
YTD Crimes	75	20	27	38	42	20	222
YTD Target	38.1	20.4	36.9	42.1	61.8	19.4	218.9
YTD 07/08 Crimes	53	15	46	53	62	20	249
This month	38	5	7	11	12	6	79
% change from 07/08	41.51%	33.33%	-41.30%	-28.30%	-32.26%	0.00%	-10.84%
MSG position	14 of 15	10 of 15	8 of 15	4 of 9	9 of 15	1 of 15	4 of 8



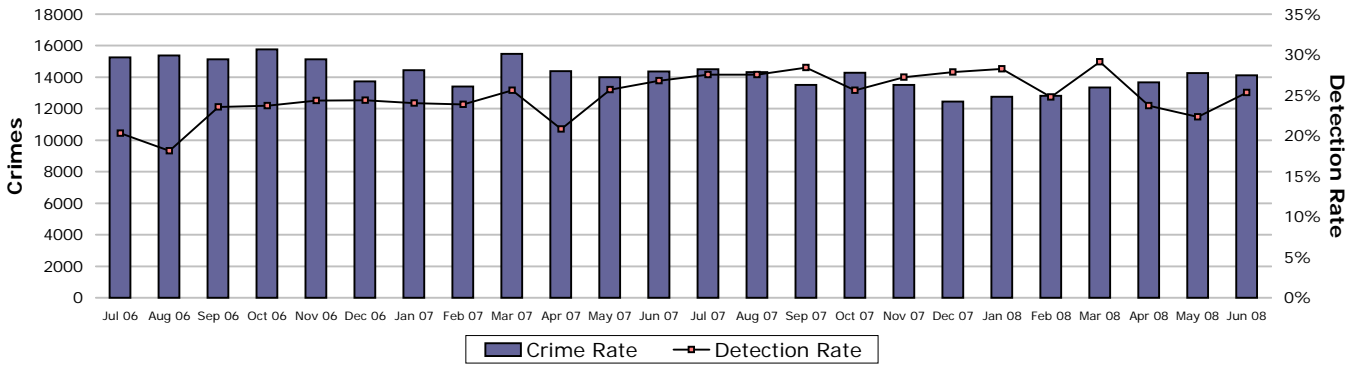
Detections	Central	Isle of Wight	North & East	Portsmouth	Southampton	Western	Force
Target >50%							
YTD Detection Rate	36.00%	90.00%	70.37%	47.37%	40.48%	40.00%	48.20%
This month	31.58%	120.00%	128.57%	81.82%	33.33%	33.33%	53.16%
YTD 07/08 Detections	62.26%	26.67%	65.22%	30.19%	62.90%	50.00%	53.01%
MSG position	6 of 15	1 of 15	3 of 15	6 of 9	1 of 15	2 of 15	2 of 8

Note: Detections refer to Sanction Detections ONLY

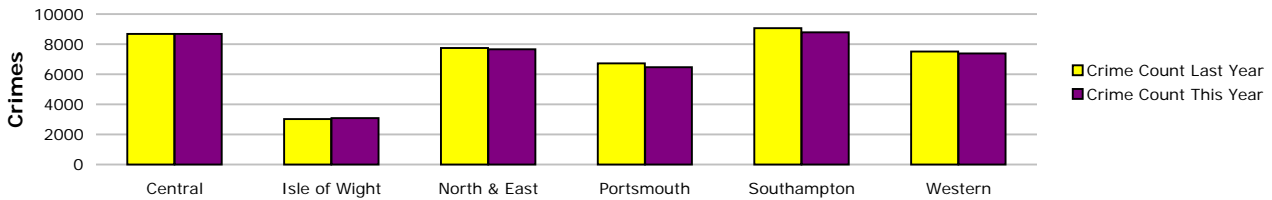


Prevent, reduce and detect crime

All crime



Crimes	Central	Isle of Wight	North & East	Portsmouth	Southampton	Western	Force
YTD Crimes	8681	3081	7662	6464	8792	7383	42063
YTD Target	8158.6	2757.7	7490.9	6178.8	8430.1	6872.4	39888.4
YTD 07/08 Crimes	8691	3015	7753	6717	9072	7509	42757
This month	2865	1288	2606	2097	2878	2391	14125
% change from 07/08	-0.12%	2.19%	-1.17%	-3.77%	-3.09%	-1.68%	-1.62%
MSG position	11 of 15	9 of 15	8 of 15	7 of 9	13 of 15	9 of 15	6 of 8



Detections	Central	Isle of Wight	North & East	Portsmouth	Southampton	Western	Force
Target >25%							
YTD Detection Rate	23.78%	28.72%	25.88%	24.35%	21.82%	21.33%	23.77%
This month	25.90%	30.05%	25.33%	30.00%	21.16%	22.92%	25.31%
YTD 07/08 Detections	20.00%	28.06%	27.95%	25.09%	25.19%	22.88%	24.41%
MSG position	11 of 15	8 of 15	9 of 15	2 of 9	7 of 15	15 of 15	5 of 8

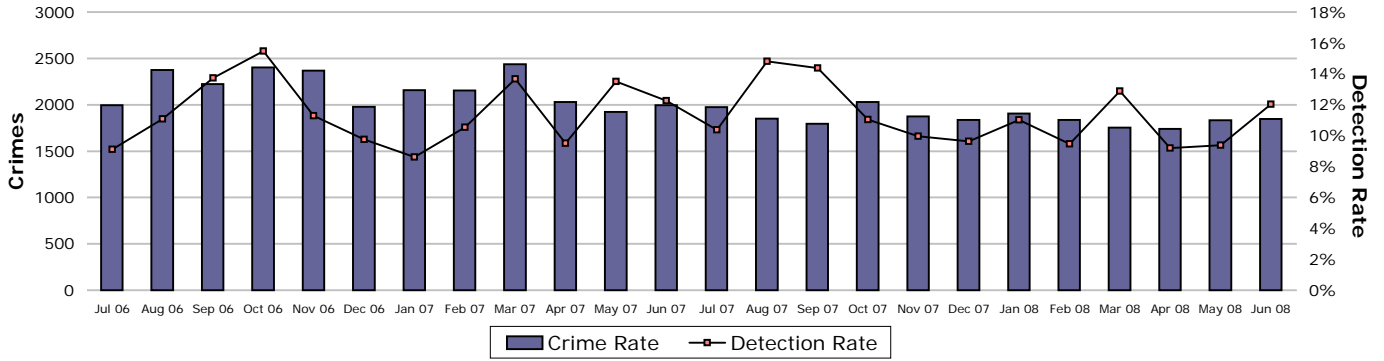
Note: Detections refer to Sanction Detections ONLY



Prevent, reduce and detect crime

Serious acquisitive crime

Serious acquisitive crime consists of crimsec codes 28, 29, 34A, 34B, 37/2, 45 and 48

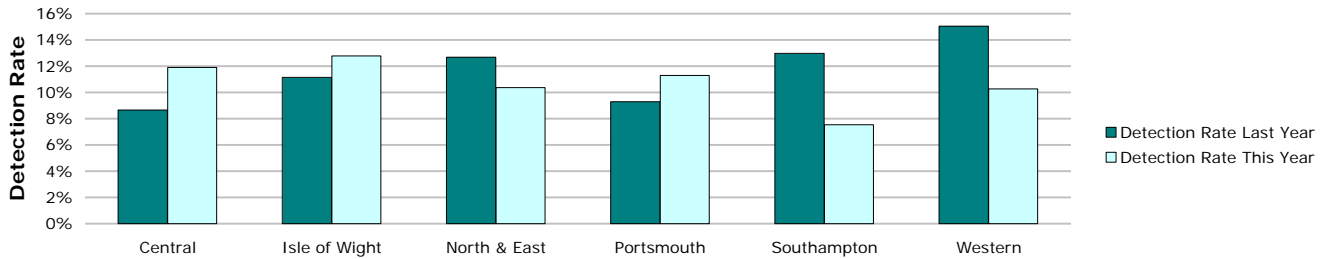


Crimes	Central	Isle of Wight	North & East	Portsmouth	Southampton	Western	Force
YTD Crimes	932	258	975	948	1275	1033	5421
YTD Target	987.3	236.8	1090.8	915.0	1240.8	1108.0	5578.7
YTD 07/08 Crimes	1064	251	1064	1183	1279	1110	5951
This month	301	91	302	342	453	357	1846
% change from 07/08	-12.41%	2.79%	-8.36%	-19.86%	-0.31%	-6.94%	-8.91%
MSG position	3 of 15	3 of 15	7 of 15	1 of 9	6 of 15	7 of 15	2 of 8



Detections	Central	Isle of Wight	North & East	Portsmouth	Southampton	Western	Force
Target > 15%							
YTD Detection Rate	11.91%	12.79%	10.36%	11.29%	7.53%	10.26%	10.22%
This month	14.95%	10.99%	7.95%	18.13%	7.73%	12.89%	12.03%
YTD 07/08 Detections	8.65%	11.16%	12.69%	9.30%	12.98%	15.05%	11.73%
MSG position	6 of 15	9 of 15	13 of 15	4 of 9	6 of 15	12 of 15	6 of 8

Note: Detections refer to Sanction Detections ONLY



Prevent, reduce and detect crime

Gun crime rate

	Central	Isle of Wight	North & East	Portsmouth	Southampton	Western	Force
YTD June 2008	5	2	11	4	8	5	35
YTD June 2007	13	1	5	9	6	9	43
% change from 07/08	-61.5%	100.0%	120.0%	-55.6%	33.3%	-44.4%	-18.6%

Knife crime rate

	Central	Isle of Wight	North & East	Portsmouth	Southampton	Western	Force
YTD June 2008	45	13	40	46	65	35	244
YTD June 2007	35	16	41	67	67	26	252
% change from 07/08	28.6%	-18.8%	-2.4%	-31.3%	-3.0%	34.6%	-3.2%

Serious sexual crime OBTJ rate

OBTJ Crime category	OBTJ Rate	
	April 08	Rolling average
Tier 1: Serious Sexual Offences	24%	21%

Murder offences

2008/2009 target = <16 murder offences

	Central	Isle of Wight	North & East	Portsmouth	Southampton	Western	Force
YTD June 2008	0	0	1	0	0	0	1
YTD June 2007	1	0	2	0	1	1	5
% change from 07/08							-80.0%

For more information, please go to the Specialist Operations - 7 OCU page

Asset recovery

Asset recovery is the sum total of the values of cash forfeitures and confiscation orders

	Central	Isle of Wight	North & East	Portsmouth	Southampton	Western	Force
April 2008	£38,187.90	£0.00	£18,413.50	£0.00	£0.00	£0.00	£56,601.40
May 2008	£0.00	£0.00	£0.00	£0.00	£69,735.00	£0.00	£69,735.00
June 2008	£76,739.37	£0.00	£140,060.50	£0.00	£8,676.00	£4,693.00	£230,168.87
Cumulative total	£114,927.27	£0.00	£158,474.00	£0.00	£78,411.00	£4,693.00	£356,505.27

Prolific and other Priority Offenders (PPOs) convictions

Currently the data available only enables the number of convictions recorded against PPOs to be reported.

The SPI measure and Force target are to be based on the conviction rate, work is being undertaken to enable reporting on this measure in line with guidance.

Guilty Verdict	January 08	February 08	March 08
Prolific and other Priority Offenders	3	1	2
Persistent Young Offenders	7	9	13

Class A drugs sanction detections

YTD June 2008 target 100

	Central	Isle of Wight	North & East	Portsmouth	Southampton	Western	Crime	Operations	No OIC	Force
YTD June 2008	5	9	18	8	6	4	29	1	0	80
YTD June 2007	10	6	16	10	5	3	4	0	3	57

Drug Intervention Measures (DIMs)

	Central	Isle of Wight	North & East	Portsmouth	Southampton	Western	Crime	Force
YTD June 2008	27	0	13	42	31	7	0	120
YTD June 2007	0	3	0	0	0	2	0	5
% change from 07/08	0.0%	-100.0%	0.0%	0.0%	0.0%	250.0%	0.0%	2300.0%

Note: The large variance between YTD 2007 and YTD 2008 is partially due to changes in the process for submissions up until Sept 07.

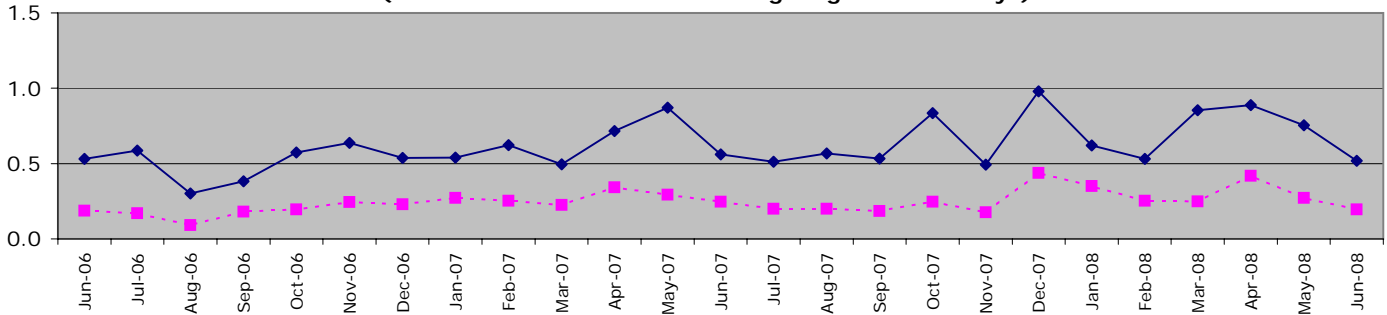
Organisational management

All Police officer sickness YTD = **2.15**

All Police officer sickness June = **0.51**

Police officers in OCUs

**Sickness and injury absence days per officer by month
(broken line shows data excluding long-term sick days)**

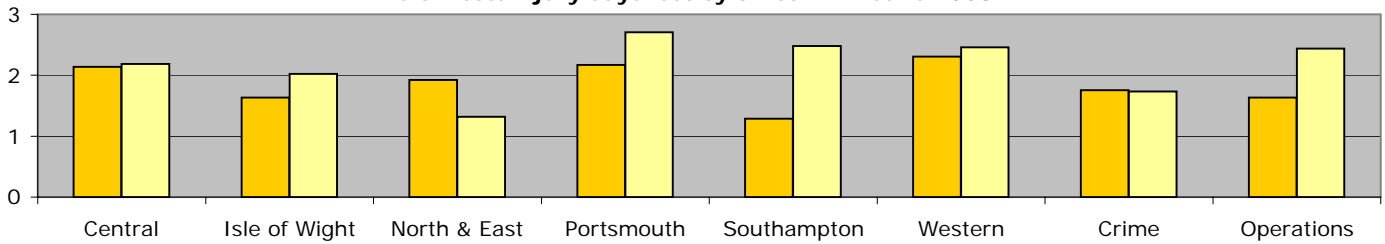


Force target for 08/09 = 7.5 days or fewer per officer (1.875 for 3 months)

YTD = 2.16 days lost per officer

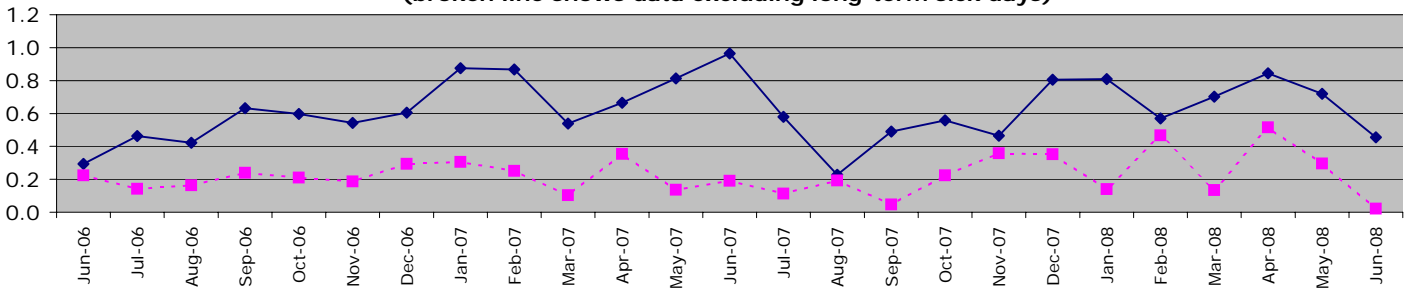
	Central	Isle of Wight	North & East	Portsmouth	Southampton	Western	Crime	Operations	OCU Totals
YTD Apr 08 - June 08	2.19	2.02	1.32	2.71	2.48	2.46	1.74	2.44	2.16
YTD Apr 07 - June 07	2.14	1.63	1.92	2.17	1.29	2.31	1.75	1.63	1.92
This month	0.54	0.84	0.26	0.36	0.67	0.66	0.64	0.35	0.54
% change	2.2%	24.1%	-31.5%	24.8%	92.8%	6.6%	-1.0%	49.2%	12.7%

Sickness/injury days lost by officer YTD June 2008



Police officers not in OCUs

**Sickness and injury absence days per police officer by month
(broken line shows data excluding long-term sick days)**

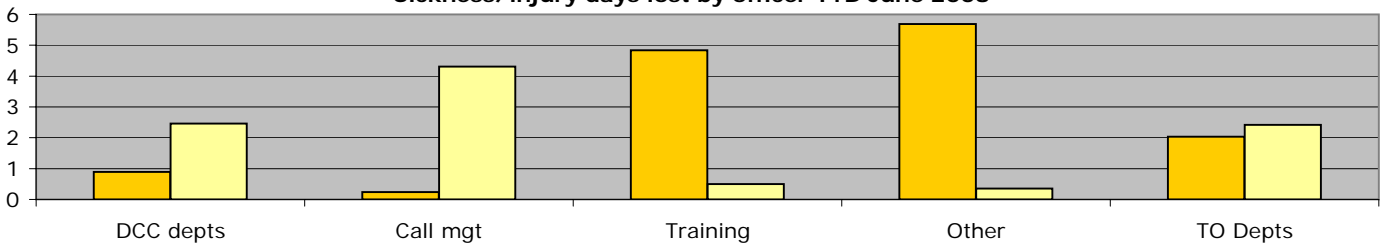


Force target for 08/09 = 7.5 days or fewer per officer (1.875 for 3 months)

YTD = 2.02 days lost per officer

	DCC depts	Call mgt	Training	Other	TO Depts	Non-OCU Totals
YTD Apr 08 - June 08	2.46	4.31	0.50	0.35	2.41	2.02
YTD Apr 07 - June 07	0.89	0.24	4.84	5.69	2.03	2.48
This month	0.51	1.26	0.08	-0.53	0.69	0.46
% change	175.8%	1672.3%	-89.6%	-93.8%	18.8%	-18.6%

Sickness/injury days lost by officer YTD June 2008



Organisational management

"Other" includes CC, SO and DoF Portfolios as well as OS Portfolio excluding Call Management and Training

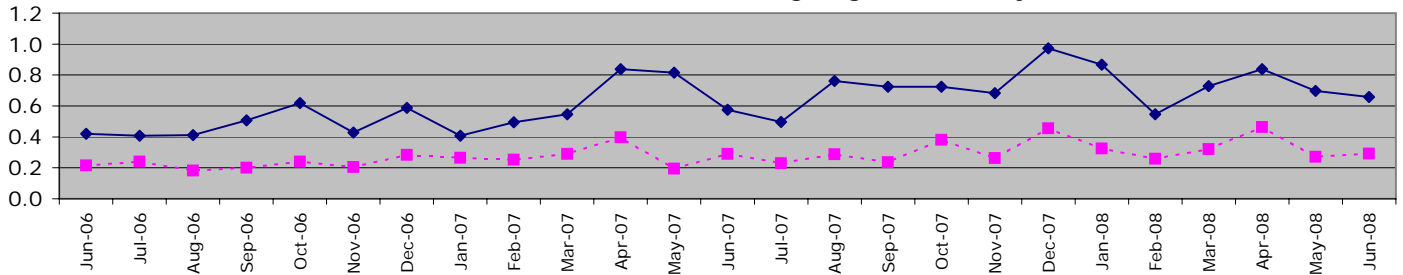
Organisational management

All Police staff sickness YTD = **2.13**

All Police staff sickness June = **0.61**

Police staff in OCUs

**Sickness and injury absence days per police staff member by month
(broken line shows data excluding long-term sick days)**

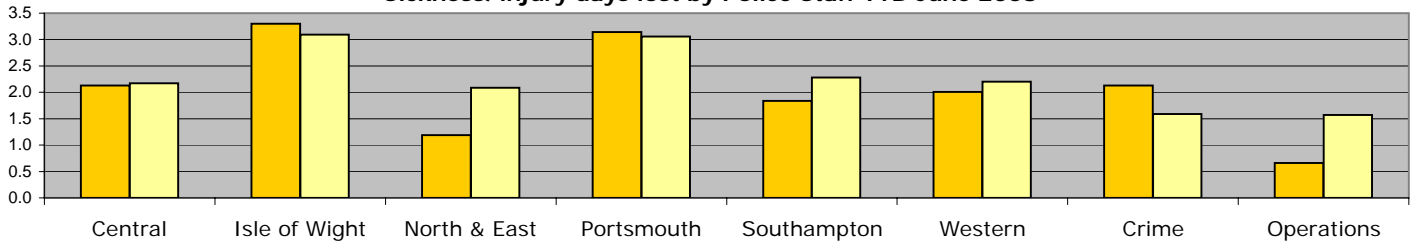


Force target for 08/09 = 7.5 days or fewer per staff member (1.875 for 3 months)

YTD = 2.19 days lost per staff member

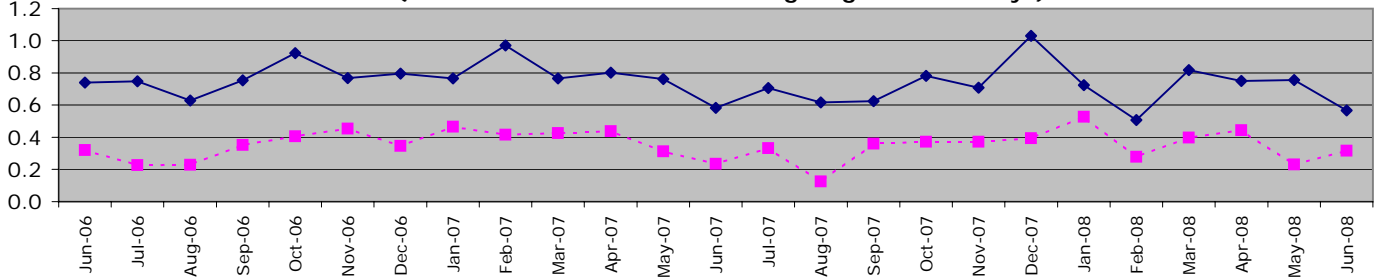
	Central	Isle of Wight	North & East	Portsmouth	Southampton	Western	Crime	Operations	OCU Totals
YTD Apr 08 - June 08	2.17	3.09	2.09	3.06	2.28	2.20	1.59	1.57	2.19
YTD Apr 07 - June 07	2.13	3.30	1.19	3.14	1.84	2.00	2.13	0.66	2.15
This month	0.79	1.05	0.17	0.90	0.26	0.44	0.52	0.62	0.53
% change	2.2%	-6.2%	75.2%	-2.6%	23.9%	9.9%	-25.1%	137.2%	53.4%

Sickness/injury days lost by Police Staff YTD June 2008



Police staff not in OCUs

**Sickness and injury absence days per police staff member by month
(broken line shows data excluding long-term sick days)**

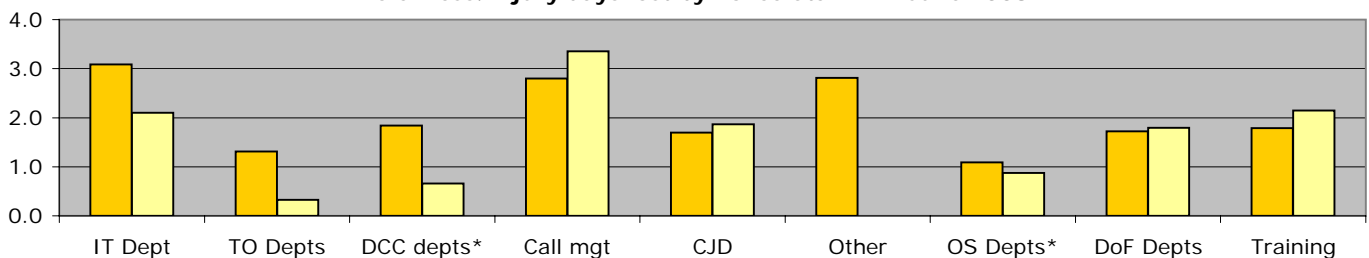


Force target for 08/09 = 7.5 days or fewer per staff member (1.875 for 3 months)

YTD = 2.07 days lost per staff member

	IT Dept	TO Depts	DCC depts*	Call mgt	CJD	Other	OS Depts*	DoF Depts	Training	Non-OCU Totals
YTD Apr 08 - June 08	2.10	0.32	0.66	3.35	1.87	0.00	0.87	1.79	2.15	2.07
YTD Apr 07 - June 07	3.09	1.31	1.84	2.80	1.70	2.81	1.09	1.72	1.79	2.18
This month	0.77	0.24	-0.03	1.06	0.60	0.00	-0.34	0.46	0.29	0.57
% change	-31.9%	-75.4%	-64.0%	19.9%	10.0%	-100.0%	-19.7%	4.2%	20.2%	-4.7%

Sickness/injury days lost by Police Staff YTD June 2008



* DCC Depts includes all depts except IT; OS Depts include all OS depts except CJD, Training & Call Mgt as reported separately

Organisational management

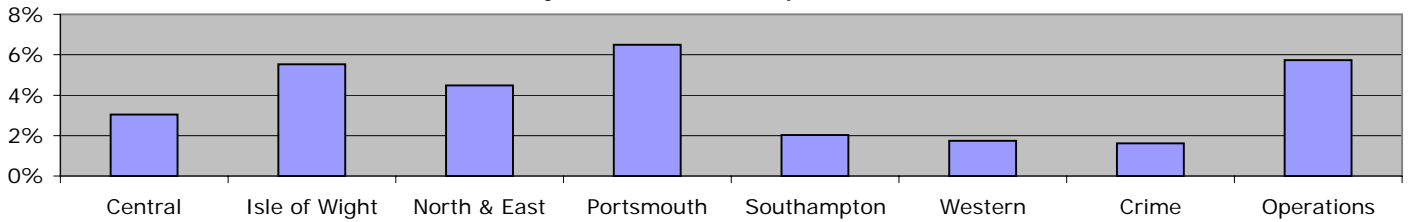
Other departments are Chief Constable and SO depts (exc 7 & 8 OCU staff as reported in OCU pages)

Organisational management

Overdue PDRs

Police officer PDRs - police officers in OCUs

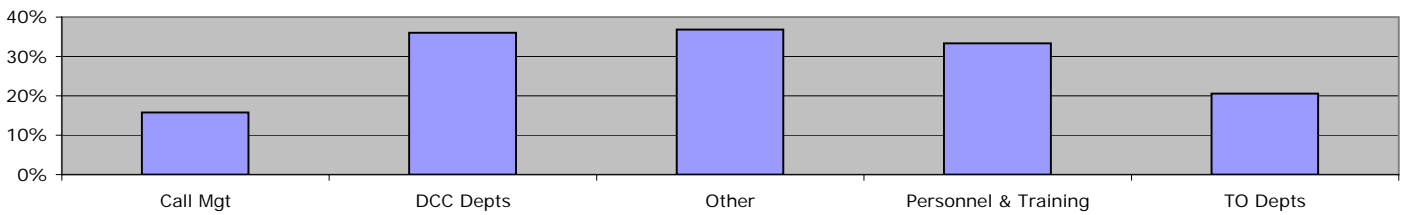
PDRs overdue by 1 month or more - police officers on OCUs



June 2008	Central	Isle of Wight	North & East	Portsmouth	Southampton	Western	Crime	Operations
Overdue	19	12	25	28	10	9	7	24
Population	626	217	557	431	492	518	432	418
% overdue	3.0%	5.5%	4.5%	6.5%	2.0%	1.7%	1.6%	5.7%

Police officer PDRs - police officers not on OCUs

PDRs overdue by 1 month or more - police officers not on OCUs

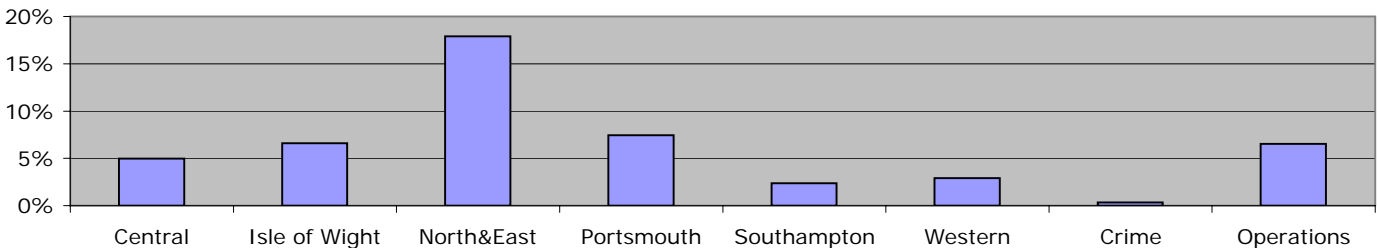


June 2008	Call Mgt	DCC Depts	Other	Personnel & Training	TO Depts
Overdue	6	9	14	21	7
Population	38	25	38	63	34
% overdue	15.8%	36.0%	36.8%	33.3%	20.6%

"Other" includes CC, SO and DoF Portfolios as well as OS Portfolio excluding Call Management and Personnel and Training

Police staff PDRs - police staff in OCUs

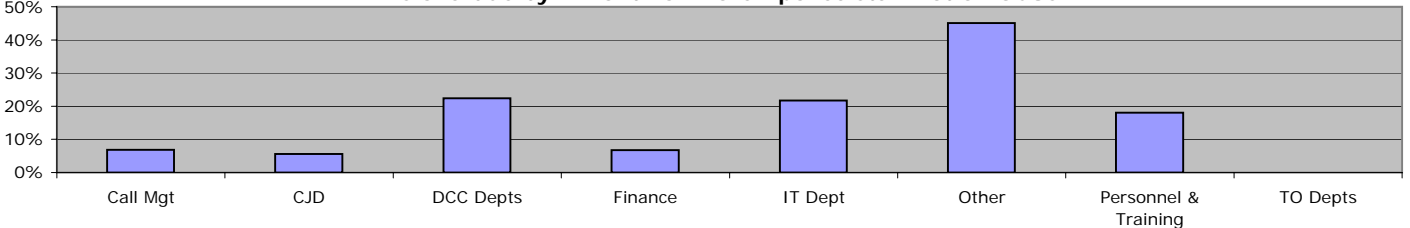
PDRs overdue by 1 month or more - police staff on OCUs



June 2008	Central	Isle of Wight	North&East	Portsmouth	Southampton	Western	Crime	Operations
Overdue	12	7	36	14	5	6	1	9
Population	242	106	201	188	210	205	282	138
% overdue	5.0%	6.6%	17.9%	7.4%	2.4%	2.9%	0.4%	6.5%

Police staff PDRs - police staff not in OCUs

PDRs overdue by 1 month or more - police staff not on OCUs



June 2008	Call Mgt	CJD	DCC Depts	Finance	IT Dept	Other	Personnel & Training	TO Depts
Overdue	29	21	34	10	25	32	29	0
Population	426	374	152	148	115	71	161	37
% overdue	6.8%	5.6%	22.4%	6.8%	21.7%	45.1%	18.0%	0.0%

DCC Depts includes all depts except IT; Other are CC, SO (exc 7 & 8 OCUS) and OS depts exc Call Mgt, CJD & Personnel and Training

Organisational management

Minority Ethnic Officer Recruitment

	All recruits	Minority ethnic recruits	%
YTD June 2008	25	0	0%

Female Officer Representation

	Male strength	Female strength	%
YTD June 2008	2812.1	1014.9	26.5%

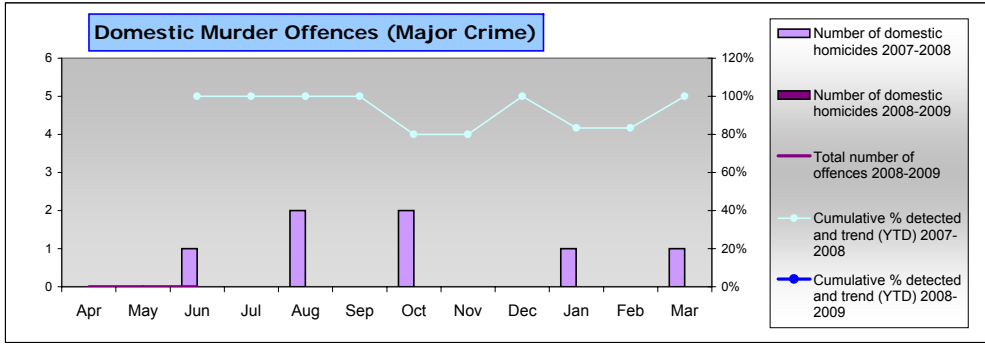
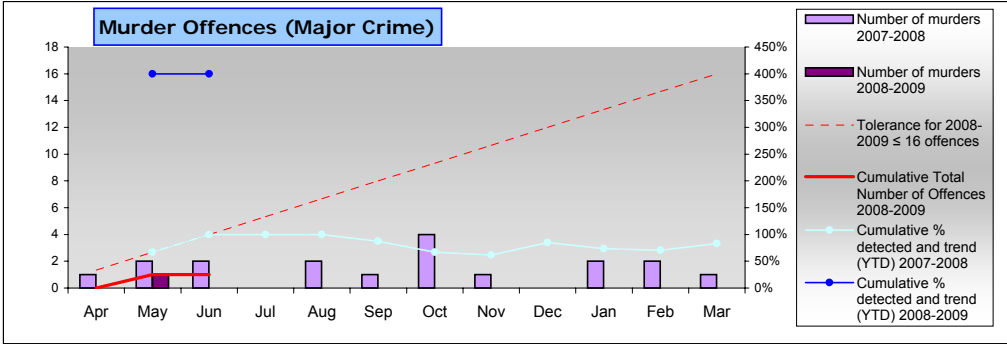
NCRS compliance

	Central	Isle of Wight	North & East	Portsmouth	Southampton	Western	Crime
NCRS audits	Fair 82%	Fair 82%	Fair 84%	Poor 72%	Poor 64%	Fair 85%	No data

Note: NCRS audit data relates to a rolling 12 mth period

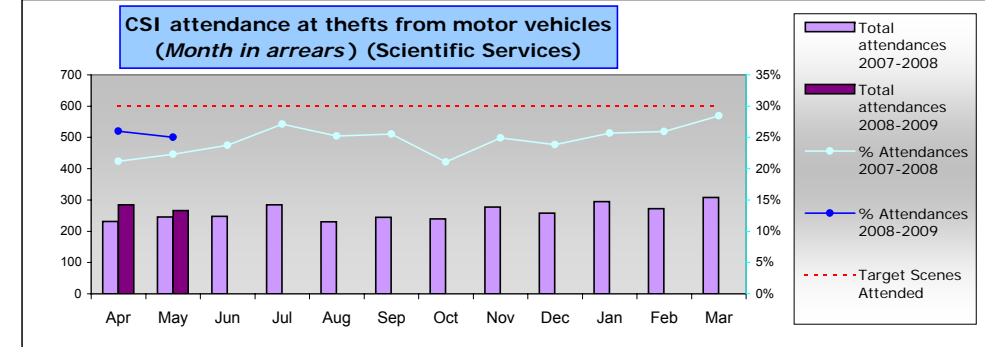
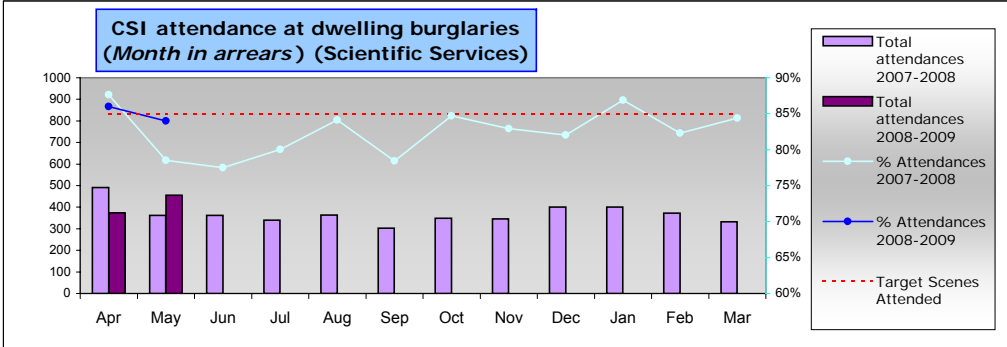
Self-Inspection	91.0%	85.0%	80.0%	66.0%	81.0%	90.0%	No data
-----------------	-------	-------	-------	-------	-------	-------	---------

Note: Self-Inspections - only appealed records are moderated by the Force Crime Registrar



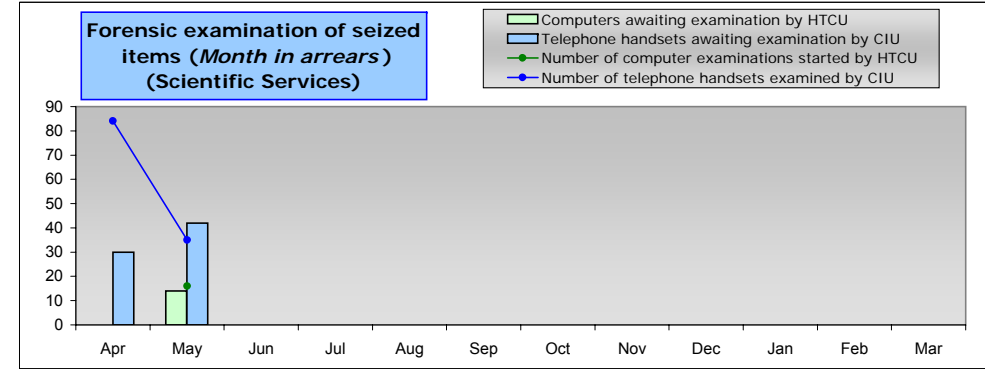
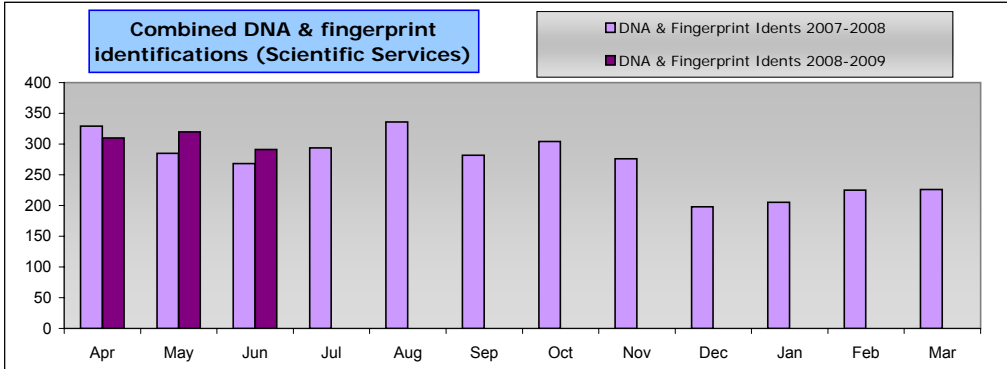
All murder offences this year compared to last year and detection rates
 The target is no more than 16 offences for the current year
 Detection target for murder is 100%

Domestic murder offences this year compared to last year and detection rates
 Detection target for murder is 100%



Burglary dwelling scene attendance rates. Target is no less than 85%

Theft from motor vehicle scene attendance rates. Target is no less than 30%



Combined DNA & fingerprint identifications this year compared to last year

Number of computer examinations started by HTCUCU
 Number of computers awaiting examination by HTCUCU
 Number of telephone handsets examined by CIU
 Number of telephone handsets awaiting examination by CIU

Specialist Operations - 8 OCU

Patrol Availability				
	Current month 07	YTD 07	Current Month 08	YTD 08
ASU	98%	95%	97%	99%
CT&DE	Not previously recorded		88%	85%
DSU	91%	85%	88%	78%
FSU	89%	89%	87%	87%
MSU	87%	85%	98%	88%
OPPU	99%		100%	95%
TFT	66%	77%	94%	81%
ARV	Not previously recorded		81%	87%
RPU	Not previously recorded		Not currently recorded	
Total	85%	85%	87%	85%

Pre-Planned Operations YTD									
Op. Name	OCU Supported								Total
	1	2	3	4	5	6	Other		
Radon	1	0	2	0	0	1	0	4	
Advasar	0	0	9	0	0	0	0	9	
Cabot	0	0	0	0	1	0	0	1	
Unnamed (Cosham)	2			1				3	
Chorus							2	2	
Op Selfridge					2			2	
Op Custodian								0	
IOW Festival		1						1	
Roadblock			4					4	
Titchbourne	2							2	
Ark	2						2	4	
Enterprise				4				4	
Rainbow						5		5	
Other	5	3	27	10	27	27	5	104	
Total Ops.	12	4	42	15	30	33	9	145	
Arrests	1	19	3	15	10	9	0	57	
FPNs	8	0	175	26	4	55	0	268	
Seizures	0	0	3	1	0	6	0	10	
Other	81	119	5	18	40	93	0	356	
Total Results	90	138	186	60	54	163	0	691	

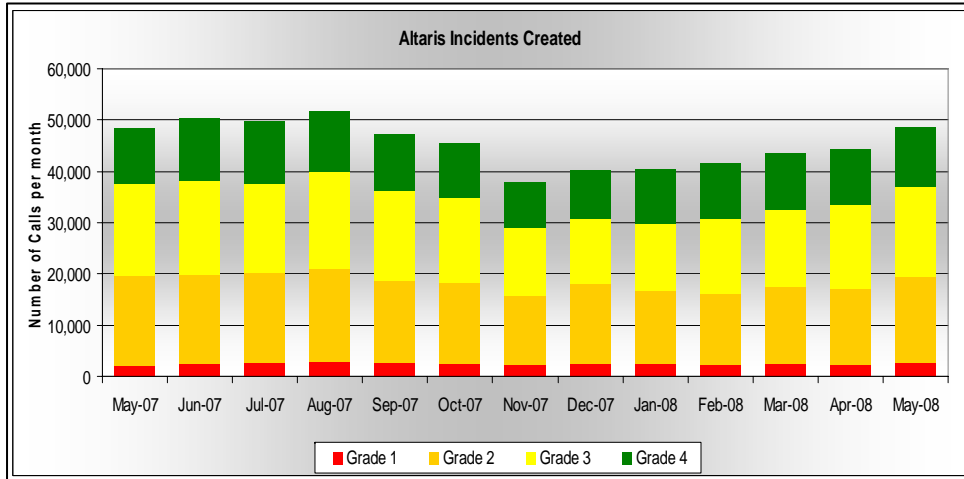
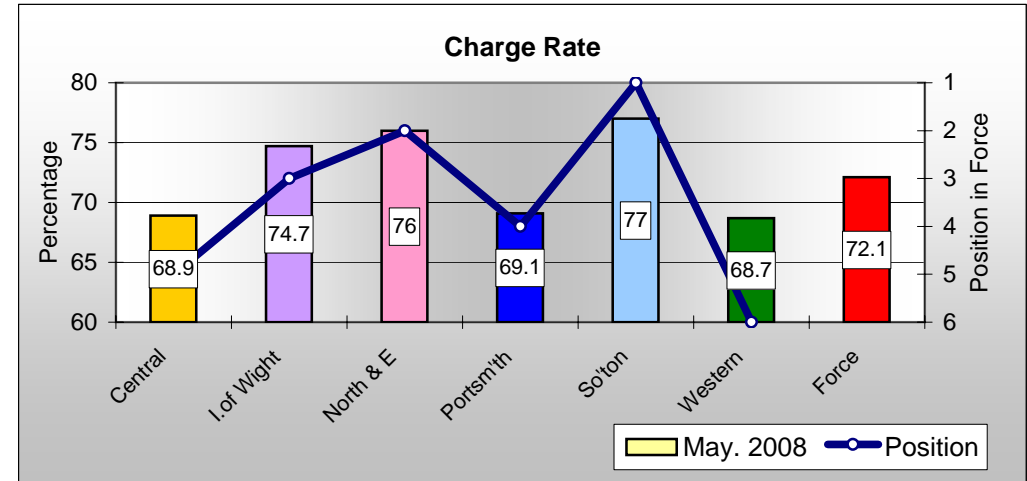
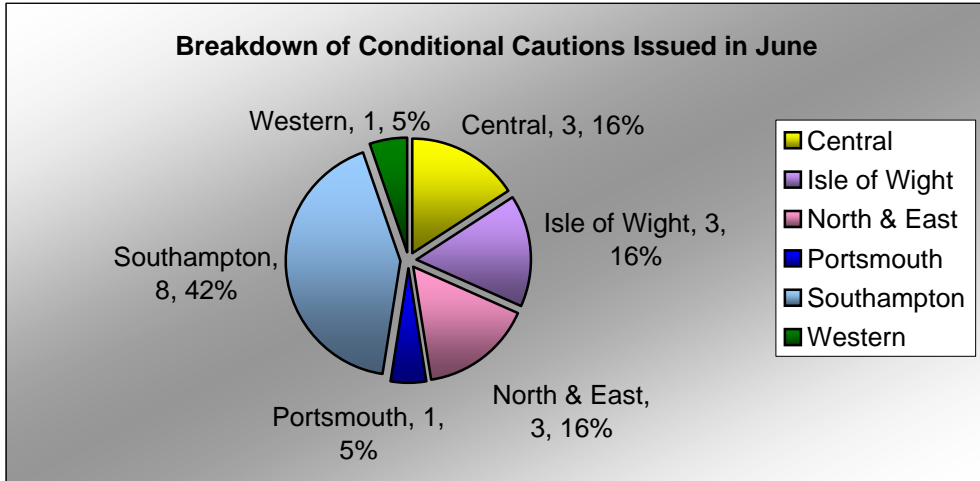
ANPR Operations YTD									
	OCU Supported								Total
	1	2	3	4	5	6	Other		
No. of Ops	2	0	4	7	0	3	0	16	
Arrests	4	0	1	25	0	1	0	31	
FPNs	23	0	0	65	0	0	0	88	
Seizures	0	0	0	39	0	3	0	42	
Other	2	0	0	218	0	72	0	292	
Total	29	0	1	347	0	76	0	453	

Interventions in support of OCUs and Force Strategy YTD								
	Arrests	CT Activity		FPNs		C12	S44	S165
		No. of visits	Hours	E1*	Other			
ASU	1	Trial still in progress. Data collation is currently being assessed to enable future reporting.						
CT&DE	0		0		0	0		
DSU	95		0		286	21		
FSU	129		2		455	79		
MSU	5		0		12	7		
OPPU	1		0		1	0		
TFT	72		0		326	11		
ARV	344		5		940	263		
RPU	595		3		3112	102	845	
Total	1242				10	0	5132	483

*The number for YTD has gone down from last month. We can only assume that this is due to the detection being removed or changed.

Operational Services

Issues of the month: The number of Conditional Cautions being issued are still below what would be expected for a progressive force of our size. Southampton OCU have taken the issue forward securing good numbers for the second month running. This will have a positive impact on public confidence in the area and of the Criminal Justice System. The graph showing Charge rate demonstrates that the force continues to secure a charge in three quarters of cases that reach the CPS for a charging decision. However, there is real variance across the force.



Diversity & Grievance Issues:
 The number of grievances reported internally is substantially above target but are resolved within timescale in 71% of cases. However the target for resolving cases within timescale is 100%. 86% of grievances are resolved at stage 1.

Altaris is the command and control system that the Constabulary uses to record and dispatch emergency calls. They are graded from 1 - 4, with 1 being the most serious and requiring the quickest response. Automatic grading based on the incident type was removed in January 08. Now the operator assesses each call individually. Since then, overall volumes of grade 1s (emergency) have remained steady, grade 2s (priority) have decreased by 1.2%, grade 3s decreased by 0.7% and grade 4s have increased by 1.7%.