



Force Performance Summary

May 2008

Summary

This document contains a strategic overview of the Constabulary's performance. It has a variety of performance measures within it, but for the first time our performance is aligned to the Force Control Strategy.

It is a headline document that will enable our customers, both internally and externally, to easily assess performance in key domains. Additionally with the introduction of the national performance framework called the Assessment of Police and Community Safety (APACS), it is crucial that we become focused and more accountable.

At the front of the document there are several matrices that reflect our performance against our targets, firstly year to date and secondly relevant for that particular month.

Performance in key areas is then explored in more depth with an indication of where each measure has originated - for example, APACS statutory performance indicator, SPI, or a control strategy measure.

This document is then taken forward by key stakeholders within the organisation to the Force Performance Review Group, where it is used to highlight areas of both best practice and those for development.

This is an evolving document and as such, the content may alter over time and any feedback would be welcomed by the Performance Review Team.

Index

Page

Year to date performance matrix

4

Monthly performance matrix

5

Safer Neighbourhoods

| | | | | |
|---|--|---------|----------------|---|
| 6 | Overall satisfaction | SPI 1.1 | Force Strategy | Consultation & Research Team |
| 6 | Being kept informed | | Force Strategy | Consultation & Research Team |
| 6 | Comparative satisfaction of minority ethnic groups | SPI 1.2 | | Consultation & Research Team |
| 6 | Satisfaction of victims of racist incidents | SPI 1.3 | | Consultation & Research Team |
| 6 | Confidence in local police | SPI 2.3 | Force Strategy | iQuanta - Quarterly |
| 6 | Understanding community issues | | Force Strategy | iQuanta - Quarterly |
| 6 | Perception of anti-social behaviour | SPI 4.1 | | iQuanta - Quarterly |
| 6 | Perception of drug use in local area | SPI 4.3 | Force Strategy | iQuanta - Quarterly |
| 6 | Perception of drunk or rowdy behaviour | SPI 4.2 | | iQuanta - Quarterly |
| 7 | Assault with less serious injury | SPI 5.3 | Force Strategy | Business Objects |
| 8 | Successful neighbourhood priorities | | Force Strategy | Neighbourhood Policing Lead - ACC 'TO' Dept |
| 8 | Anti-social use of motor vehicle (NSIR) | | Force Strategy | Performance Review Team - NSIR Return |
| 8 | Anti-social behaviour (NSIR) | | Force Strategy | Performance Review Team - NSIR Return |
| 9 | Reduce criminal damage | | Force Strategy | Business Objects |

Safeguard people

| | | | | |
|----|-------------------------------------|--|----------------|--|
| 10 | DV Incident arrest rate | | Force Strategy | Business Objects - Following IT Development Work |
| 10 | DV victimisation | | Force Strategy | N/A |
| 10 | Repeat victims of domestic violence | | Force Strategy | Business Objects - Following IT Development Work |
| 10 | Domestic violence OBTJ rate | | Force Strategy | N/A |
| 10 | Hate crime detection rate | | Force Strategy | Business Objects |
| 10 | Sexual offender reoffending rate | | Force Strategy | N/A |

Protect our communities

| | | | | |
|----|-----------------------------------|---------|----------------|------------------------|
| 11 | Number of Rainbow visits | | Force strategy | N/A |
| 11 | Dangerous sites assessed as green | | Force strategy | N/A |
| 11 | Road traffic casualties | SPI 9.1 | Force strategy | 8 OCU Performance Team |

Prevent, reduce and detect crime

| | | | | |
|----|---|----------|----------------|--|
| 12 | Serious violent crime and sanction detections | SPI 5.1 | Force strategy | Business Objects |
| 13 | All crime | | Force strategy | Business Objects |
| 14 | Serious acquisitive crime and sanction detections | SPI 5.2 | Force strategy | Business Objects |
| 15 | Gun crime rate | SPI 5.5 | | Business Objects |
| 15 | Knife crime rate | SPI 5.6 | | Business Objects |
| 15 | Serious sexual crime OBTJ rate | SPI 6.4 | Force strategy | N/A |
| 15 | Murder offences | | Force strategy | Business Objects |
| 15 | Asset recovery | SPI 8.1 | Force strategy | N/A |
| 15 | PPO convictions | SPI 10.1 | Force strategy | N/A |
| 15 | Class A drugs sanction detections | | Force strategy | Business Objects - 'Class A Drug Report' |
| 15 | Drug Intervention Measures (DIMs) | | | Force Intelligence Development Unit DS |

Organisational management

| | | | | |
|----|-------------------------------------|----------|----------------|---|
| 16 | Police officer sickness | SPI 13.1 | Force Strategy | Performance Review Team - Delphi + Personnel - Staffing Figures |
| 17 | Police staff sickness | SPI 13.2 | Force Strategy | Performance Review Team - Delphi + Personnel - Staffing Figures |
| 18 | Overdue PDRs | | | Personnel |
| 19 | Minority Ethnic Officer Recruitment | SPI 3.1 | | Personnel |
| 19 | Female Officer Representation | SPI 3.2 | | Personnel |
| 19 | NCRS compliance | | Force Strategy | Force Incident & Crime Registrar |
| 19 | Budget spend | | Force Strategy | Finance |
| 19 | Efficiency savings | SPI 12.1 | Force Strategy | Finance |

Specialist Operations - 7 OCU

20 Murder & domestic murder offences (SPI 5.4), CSI attendance, DNA & fingerprint identifications, forensic examinations

Specialist Operations - 8 OCU

21 Patrol availability, pre-planned operations, ANPR operations, Interventions in support of OCU's & Force Strategy

Operational Services

22 Conditional cautions issued, breakdown of PST actions, charge to no prosecution rate, video identification images

Restricted data

23

Year to date performance matrix

This matrix is based on year to date comparison with 2007/2008 performance

| | | Target | Actual | Central | Isle of Wight | North & East | Portsmouth | Southampton | Western | Crime | Operations | | |
|--|--|-------------|--------------------|--|---------------|--------------|------------|-------------|----------|----------|------------|--------------------|--------------------|
| Safer Neighbourhoods | Perception of drug use in local area | <22.6 | 23.0% | Force level target - be under MSG average whilst not declining on current performance | | | | | | | | | |
| | Confidence in local police | >58.25 | 57.4% | Force level target - to exceed MSG average by 5% whilst not declining on current performance | | | | | | | | | |
| | Understanding community issues | >65.2 | 64.2% | Force level target - to exceed MSG average by 3.5% whilst not declining on current performance | | | | | | | | | |
| | Successful neighbourhood priorities | > 33% | No data | No data | No data | No data | No data | No data | No data | No data | No data | | |
| | Anti-social use of motor vehicle | -5.0% | -18.6% | -5% | -15% | -38% | -20% | -17% | -10% | N/A | | | |
| | Anti-social behaviour | -5.0% | -13.1% | -13.3% | -12.5% | -4.2% | -15.0% | -17.3% | -16.2% | N/A | | | |
| | Reduce criminal damage | -12% | -6.8% | -4.5% | -7.5% | -10.5% | -2.2% | -15.2% | 1.0% | N/A | | | |
| | Assault with less serious injury* | -5.0% | 15.8% | 8.3% | 7.3% | 21.9% | 4.0% | 36.6% | 5.2% | N/A | | | |
| | OCU specific targets | | | -5.91% | -4.52% | 0.00% | -4.00% | -8.69% | -4.21% | | | | |
| | Overall satisfaction | > 62% | 59.0% | 62.0% | 65.0% | 55.0% | 57.0% | 59.0% | 62.0% | N/A | | | |
| Being kept informed | > 60% | 44.0% | 46.0% | 50.0% | 40.0% | 41.0% | 44.0% | 46.0% | N/A | | | | |
| Safer Neighbourhoods - targets achieved | | 2 | 3 | 3 | 1 | 2 | 3 | 3 | | | | | |
| Safeguard people | Domestic violence incident arrest rate | > 35% | No data | No data | No data | No data | No data | No data | No data | N/A | | | |
| | Domestic violence victimisation | Placeholder | Placeholder | | | | | | | | N/A | | |
| | Repeat victims of domestic violence | -5.0% | No data | No data | No data | No data | No data | No data | No data | N/A | | | |
| | Domestic violence OBTJ rate | Placeholder | Placeholder | | | | | | | | N/A | | |
| | Hate crime detection rate | > 45% | 28.1% | 24.4% | 29.6% | 40.3% | 18.8% | 37.7% | 24.6% | N/A | | | |
| | Sexual offender reoffending rate | Placeholder | Placeholder | | | | | | | | | | |
| Safeguard people - targets achieved | | 0 | 0 | 0 | 0 | 0 | 0 | 0 | 0 | | | | |
| Protect our communities | Number of Rainbow visits | Placeholder | Placeholder | | | | | | | | | | |
| | Dangerous sites assessed as green | Placeholder | Placeholder | | | | | | | | | | |
| | Road traffic casualties | <98 | 69 | Owned by Operations OCU | | | | | | | | 69 | |
| Protect our communities - targets achieved | | 1 | 0 | 0 | 0 | 0 | 0 | 0 | 0 | 1 | | | |
| Prevent, reduce and detect crime | Serious violent crime | -6.0% | -9.9% | 14.3% | 114.3% | -35.5% | -21.9% | -20.5% | -17.6% | N/A | | | |
| | All crime* | -3.0% | -0.5% | 2.3% | 3.2% | -2.7% | -2.7% | -3.1% | 2.3% | N/A | | | |
| | OCU specific targets | | | -2.3% | -2.3% | -1.5% | -1.5% | -4.3% | -5.3% | | | | |
| | Serious violent crime SD | > 50% | 46.2% | 40.0% | 80.0% | 50.0% | 36.0% | 45.2% | 42.9% | N/A | | | |
| | Serious acquisitive crime* | -2.0% | -8.9% | -14.2% | 7.5% | -5.1% | -26.8% | 0.1% | 0.4% | N/A | | | |
| | OCU specific targets | | | -1.39% | -2.11% | -2.38% | -1.36% | -2.27% | -2.48% | | | | |
| | Serious sexual crime OBTJ rate | Placeholder | Placeholder | | | | | | | | | | |
| | Serious acquisitive crime SD | > 15% | 9.2% | 10.6% | 13.3% | 11.1% | 7.5% | 7.5% | 8.8% | N/A | | | |
| | Murder offences | 2.67 | 1 | Owned by Crime OCU | | | | | | | | 1 | Owned by Crime OCU |
| | Asset recovery | Placeholder | Placeholder | | | | | | | | | | |
| PPO reoffending rate | Placeholder | Placeholder | | | | | | | | | | | |
| Class A drugs SD | >67 | 62 | Owned by Crime OCU | | | | | | | | 62 | Owned by Crime OCU | |
| Prevent, reduce and detect crime - targets achieved | | 3 | 1 | 1 | 4 | 3 | 1 | 1 | 1 | 1 | 0 | | |
| Organisational management | Police officer sickness | <1.25 | 1.64 | 1.65 | 1.18 | 1.06 | 2.35 | 1.81 | 1.80 | 1.10 | 2.10 | | |
| | Police staff sickness | <1.25 | 1.52 | 1.38 | 1.81 | 1.81 | 1.89 | 1.95 | 1.58 | 1.07 | 0.95 | | |
| | NCRS compliance | Good | N/A | Fair | Fair | Fair | Poor | Poor | Fair | No data | N/A | | |
| | | 90.0% | | 82% | 82% | 84% | 72% | 64% | 85% | No data | | | |
| | Budget spend | On Budget | No data | No data | No data | No data | No data | No data | No data | No data | No data | | |
| | Efficiency savings | > £10m | £2.44m | This is a Force measure | | | | | | | | | |
| Organisational management - targets achieved | | 0 | 0 | 1 | 1 | 0 | 0 | 0 | 0 | 2 | 1 | | |
| Force Total - targets achieved | | 6 | 4 | 5 | 6 | 5 | 4 | 4 | 4 | 3 | 2 | | |

Notes to be read in conjunction with matrix

All citizen focus data
Road traffic casualties
Efficiency savings
Placeholder

SD
Anti-social use of motor vehicle & behaviour
Sickness data

OCU specific targets
* = variable targets across OCUs for these target areas based on previous performance and MSG position

Based on "completely or very satisfied"

All data until 08/05/2008

3 year target of £30m, notionally £10m per year

Target and supporting information to be confirmed

Sanction detections

Data is obtained from NSIR and always 1 month in arrears

Force Actual = total for ALL officers/police staff - including those not in OCU

OCU specific targets are rounded to 1 decimal place, the actual figure may therefore seem the same but appear red du

Monthly performance matrix

This matrix is based on monthly data compared to force target

| | | Target | Actual | Central | Isle of Wight | North & East | Portsmouth | Southampton | Western | Crime | Operations |
|--|---------------------------------------|----------------------|--------------------|-----------------------|---------------|--------------|------------|-------------|----------|--------------------|--------------------|
| Safer Neighbourhoods | Successful neighbourhood priorities | > 33% | No data | No data | No data | No data | No data | No data | No data | No data | No data |
| | Anti-social use of motor vehicle | < 1410 | 1479 | 356 | 93 | 251 | 153 | 250 | 314 | N/A | |
| | | OCU specific targets | | | 302 | 95 | 269 | 139 | 252 | 280 | |
| | Anti-social behaviour | < 7843 | 8850 | 1887 | 670 | 1629 | 1264 | 1890 | 1393 | N/A | |
| | | OCU specific targets | | | 1647 | 575 | 1346 | 1227 | 1675 | 1247 | |
| | Reduce criminal damage | < 2908 | 3365 | 783 | 243 | 549 | 459 | 662 | 669 | N/A | |
| OCU specific targets | | | 636 | 228 | 524 | 362 | 620 | 538 | | | |
| Assault with injury* | < 1163 | 1399 | 299 | 90 | 242 | 177 | 385 | 206 | N/A | | |
| | OCU specific targets | | | 246 | 79 | 205 | 163 | 285 | 186 | | |
| Safer Neighbourhoods - targets achieved | | | 0 | 0 | 1 | 1 | 0 | 1 | 0 | | |
| Safeguard people | Domestic violent incident arrest rate | > 35% | No data | No data | No data | No data | No data | No data | No data | N/A | |
| | Domestic violence victimisation | Placeholder | | Placeholder | | | | | | N/A | |
| | Repeat victims of domestic violence | -5.0% | No data | No data | No data | No data | No data | No data | No data | N/A | |
| | Domestic violence OBTJ rate | Placeholder | | Placeholder | | | | | | N/A | |
| | Hate crime detection rate | > 45% | 27.6% | 20.0% | 33.3% | 41.4% | 13.2% | 36.8% | 32.4% | N/A | |
| | Sexual offender reoffending rate | Placeholder | | Placeholder | | | | | | | |
| Safeguard people - targets achieved | | | 0 | 0 | 0 | 0 | 0 | 0 | 0 | | |
| Protect our communities | Number of Rainbow visits | Placeholder | | Placeholder | | | | | | | |
| | Dangerous sites assessed as green | Placeholder | | Placeholder | | | | | | | |
| Protect our communities - targets achieved | | | 0 | 0 | 0 | 0 | 0 | 0 | 0 | 0 | |
| Prevent, reduce and detect crime | Serious violent crime | < 75 | 69 | 13 | 9 | 9 | 15 | 16 | 7 | N/A | |
| | | OCU specific targets | | | 13 | 7 | 13 | 14 | 21 | 7 | |
| | All crime* | < 13588 | 14487 | 3095 | 921 | 2592 | 2279 | 2988 | 2612 | N/A | |
| | | OCU specific targets | | | 2779 | 939 | 2552 | 2105 | 2872 | 2341 | |
| | Serious violent crime SD | > 50% | 43.5% | 69.2% | 55.6% | 100.0% | 6.7% | 25.0% | 28.6% | N/A | |
| | Serious acquisitive crime* | < 1900 | 1855 | 307 | 86 | 340 | 338 | 423 | 361 | N/A | |
| | | OCU specific targets | | | 336 | 81 | 372 | 312 | 423 | 377 | |
| | Serious sexual crime OBTJ rate | Placeholder | | Placeholder | | | | | | | |
| | Serious acquisitive crime SD | > 15% | 9.4% | 14.0% | 17.4% | 10.9% | 3.6% | 7.3% | 10.0% | N/A | |
| | Murder offences | < 1.33 | 1 | Owned by Crime OCU | | | | | | 1 | Owned by Crime OCU |
| | Asset recovery | Placeholder | | Placeholder | | | | | | | |
| PPO reoffending rate | Placeholder | | Placeholder | | | | | | | | |
| Class A drugs SD | > 33 | 25 | Owned by Crime OCU | | | | | | 25 | Owned by Crime OCU | |
| Prevent, reduce and detect crime - targets achieved | | | 3 | 2 | 3 | 3 | 0 | 1 | 1 | 1 | 0 |
| Organisational management | Police officer sickness | < 0.63 | 0.75 | 0.89 | 0.31 | 0.61 | 1.27 | 0.43 | 0.69 | 0.59 | 1.08 |
| | Police staff sickness | < 0.63 | 0.73 | 0.55 | 0.80 | 0.79 | 0.89 | 0.87 | 0.82 | 0.43 | 0.56 |
| | Budget spend | On Budget | No data | No data | No data | No data | No data | No data | No data | No data | No data |
| | Efficiency savings | > £10m | £2.44m | This is Force measure | | | | | | | |
| Organisational management - targets achieved | | | 0 | 1 | 1 | 1 | 0 | 1 | 0 | 2 | 1 |
| Force Total - targets achieved | | | 3 | 3 | 5 | 5 | 0 | 3 | 1 | 3 | 1 |

Notes to be read in conjunction with matrix

Efficiency savings

Placeholder

SD

Anti-social use of motor vehicle & behaviour

Sickness data

OCU specific targets

* = variable targets across OCUs for these target areas based on previous performance and MSG position

3 year target of £30m, notionally £10m per year

Target and supporting information to be confirmed

Sanction detections

Data is obtained from NSIR and always 1 month in arrears

Force Actual = total for ALL officers/police staff - including those not in OCU

OCU specific targets are rounded to 1 decimal place, the actual figure may therefore seem the same but appear red

Safer Neighbourhoods

Overall satisfaction

Data relates to interviews which took place June 07-May 08
Overall Satisfaction (includes Burglary, Vehicle Crime, Violent Crime and RTCs)

| | | | | | | | |
|------------|---------|---------------|--------------|------------|-------------|---------|-------|
| Target 62% | Central | Isle of Wight | North & East | Portsmouth | Southampton | Western | Force |
| | 62% | 65% | 55% | 57% | 59% | 62% | 59% |

Being kept informed

Data relates to interviews which took place June 07-May 08
Being Kept Informed (includes Burglary, Vehicle Crime, Violent Crime and RTCs)

| | | | | | | | |
|------------|---------|---------------|--------------|------------|-------------|---------|-------|
| Target 60% | Central | Isle of Wight | North & East | Portsmouth | Southampton | Western | Force |
| | 46% | 50% | 40% | 41% | 44% | 46% | 44% |

Comparative satisfaction of minority ethnic groups

Data relates to interviews which took place June 07-May 08
These figures are for overall satisfaction for Burglary, Vehicle Crime, Violent Crime & RTCs it excludes Racist Incidents

| | Completely and very satisfied | Completely, very and fairly satisfied |
|-----------------|-------------------------------|---------------------------------------|
| White | 59.8% | 79.5% |
| Minority Ethnic | 51.1% | 73.7% |

Satisfaction of victims of racist incidents

These figures are interviews which took place May 07-Apr 08 these will be updated quarterly.
Racist incident overall satisfaction - % completely or very satisfied

| | | | | | | | |
|---------------|---------|---------------|--------------|------------|-------------|---------|-------|
| | Central | Isle of Wight | North & East | Portsmouth | Southampton | Western | Force |
| % | 50% | 50% | 71% | 64% | 41% | 77% | 58% |
| No of surveys | 24 | 8 | 24 | 39 | 51 | 26 | 172 |

British Crime Survey data

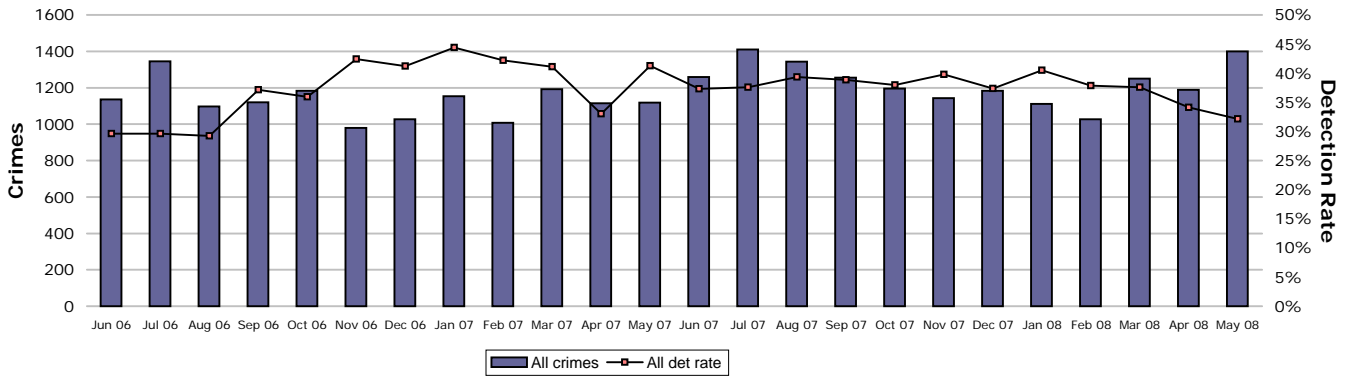
| Data 12 months up to December 2007 | Confidence in local police | | Understanding community issues | |
|------------------------------------|----------------------------|---|--------------------------------|---|
| Avon & Somerset | 49.5% | 8 | 57.9% | 8 |
| Bedfordshire | 50.5% | 6 | 63.9% | 3 |
| Essex | 53.8% | 4 | 61.5% | 4 |
| Hampshire | 57.4% | 1 | 64.2% | 2 |
| Hertfordshire | 56.4% | 2 | 67.2% | 1 |
| Kent | 49.8% | 7 | 60.6% | 6 |
| Sussex | 52.2% | 5 | 60.4% | 7 |
| Thames Valley | 56.4% | 2 | 61.4% | 5 |
| MSG | 53.3% | | 61.7% | |

| Data 12 months up to December 2007 | Perception of antisocial behaviour | | Perception of drug use | | Perception of drunk or rowdy behaviour | |
|------------------------------------|------------------------------------|---|------------------------|---|--|---|
| Avon & Somerset | 13.9% | 3 | 22.9% | 4 | 23.7% | 4 |
| Bedfordshire | 17.2% | 8 | 24.7% | 6 | 21.4% | 2 |
| Essex | 10.0% | 1 | 17.3% | 1 | 19.8% | 1 |
| Hampshire | 15.6% | 5 | 23.0% | 5 | 28.2% | 8 |
| Hertfordshire | 13.8% | 2 | 24.7% | 6 | 23.9% | 5 |
| Kent | 15.6% | 5 | 21.8% | 2 | 21.7% | 3 |
| Sussex | 15.2% | 4 | 22.3% | 3 | 24.6% | 6 |
| Thames Valley | 17.0% | 7 | 26.3% | 8 | 27.2% | 7 |
| MSG | 15.1% | | 22.6% | | 23.7% | |

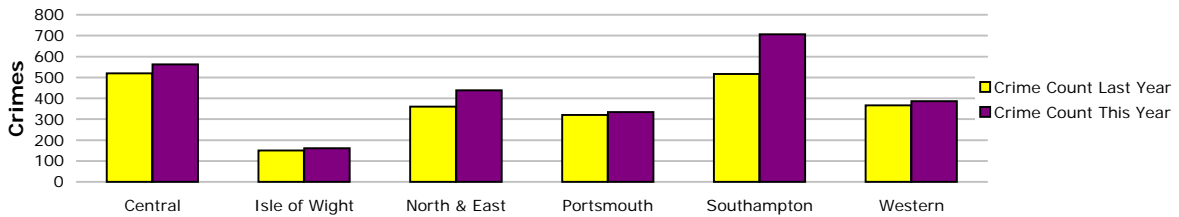
Safer Neighbourhoods

Assault with less serious injury

Assault with less serious injury consists of crimsec codes 8G and 8J

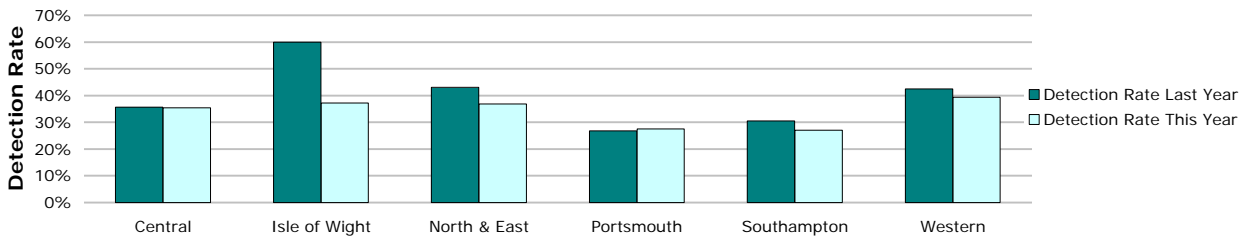


| Crimes | Central | Isle of Wight | North & East | Portsmouth | Southampton | Western | Force |
|-------------------------|------------|---------------|--------------|------------|-------------|------------|-------------|
| YTD Crimes | 562 | 161 | 439 | 334 | 706 | 386 | 2588 |
| YTD Target | 484.0 | 155.4 | 403.3 | 320.9 | 559.9 | 365.2 | 2288.6 |
| YTD 07/08 Crimes | 519 | 150 | 360 | 321 | 517 | 367 | 2234 |
| This month | 299 | 90 | 242 | 177 | 385 | 206 | 1399 |
| % change from 07/08 | 8.29% | 7.33% | 21.94% | 4.05% | 36.56% | 5.18% | 15.85% |



| Detections | Central | Isle of Wight | North & East | Portsmouth | Southampton | Western | Force |
|---------------------------|---------------|---------------|---------------|---------------|---------------|---------------|---------------|
| YTD Detection Rate | 35.41% | 37.27% | 36.90% | 27.54% | 27.05% | 39.38% | 33.08% |
| This month | 30.43% | 30.00% | 42.56% | 27.68% | 25.97% | 38.83% | 32.17% |

Note: Detections refer to Sanction Detections ONLY



Safer Neighbourhoods

Successful neighbourhood priorities

Data will be available next month for the 1st quarter April - June 2008

Anti-social use of motor vehicle

Data to be provided a month in arrears. It is gathered using Altaris closing codes as the primary data source, then RMS as the secondary data source to gather incidents not recorded within Altaris.

The Force total does not add up to the sum of OCUs, this is due to Altaris incident logs which do not contain a geographic location. The April data is likely to change this month as there are some amendments required which currently await IT Development.

| | Central | Isle of Wight | North & East | Portsmouth | Southampton | Western | Force |
|-----------------------------|------------|---------------|--------------|------------|-------------|------------|-------------|
| YTD Apr 08 to Apr 08 | 356 | 93 | 251 | 153 | 250 | 314 | 1479 |
| YTD Apr 07 to Apr 07 | 375 | 109 | 405 | 191 | 301 | 349 | 1816 |
| April | 356 | 93 | 251 | 153 | 250 | 314 | 1479 |
| YTD Target | 302.5 | 94.5 | 269.4 | 139.0 | 252.2 | 279.6 | 1409.9 |
| % v target | 17.7% | -1.6% | -6.8% | 10.1% | -0.9% | 12.3% | 4.9% |
| % change from 07/08 | -5.1% | -14.7% | -38.0% | -19.9% | -16.9% | -10.0% | -18.6% |

Anti-social use of motor vehicle - relates to NSIR category Vehicle Nuisance/Inappropriate Use within the Anti-Social Behaviour Grouping

Anti-social behaviour

Data to be provided a month in arrears. It is gathered using Altaris closing codes as the primary data source, then RMS as the secondary data source to gather incidents not recorded within Altaris.

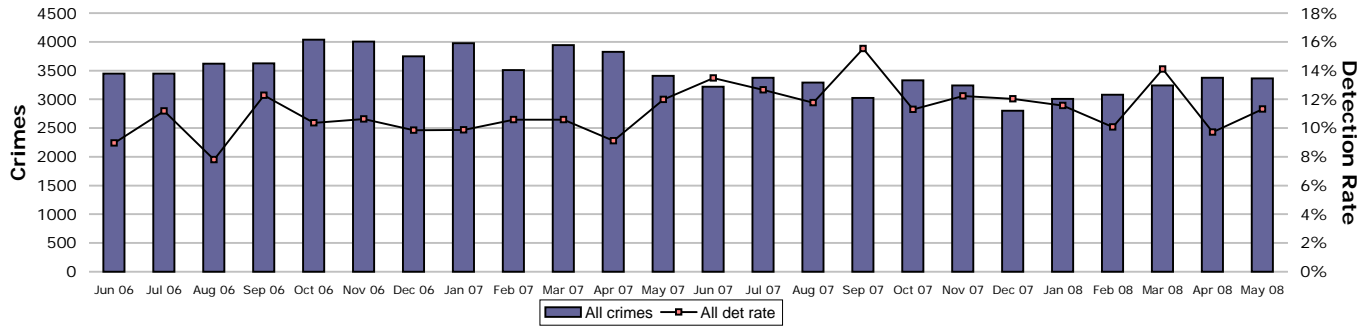
The Force total does not add up to the sum of OCUs, this is due to Altaris incident logs which do not contain a geographic location. The April data is likely to change this month as there are some amendments required which currently await IT Development.

| | Central | Isle of Wight | North & East | Portsmouth | Southampton | Western | Force |
|-----------------------------|-------------|---------------|--------------|-------------|-------------|-------------|--------------|
| YTD Apr 08 to Apr 08 | 1887 | 670 | 1629 | 1264 | 1890 | 1393 | 8850 |
| YTD Apr 07 to Apr 07 | 2176 | 766 | 1701 | 1487 | 2285 | 1663 | 10184 |
| April | 1887 | 670 | 1629 | 1264 | 1890 | 1393 | 8850 |
| YTD Target | 1647.1 | 575.0 | 1346.3 | 1227.5 | 1674.6 | 1246.5 | 7843.2 |
| % v target | 14.6% | 16.5% | 21.0% | 3.0% | 12.9% | 11.8% | 12.8% |
| % change from 07/08 | -13.3% | -12.5% | -4.2% | -15.0% | -17.3% | -16.2% | -13.1% |

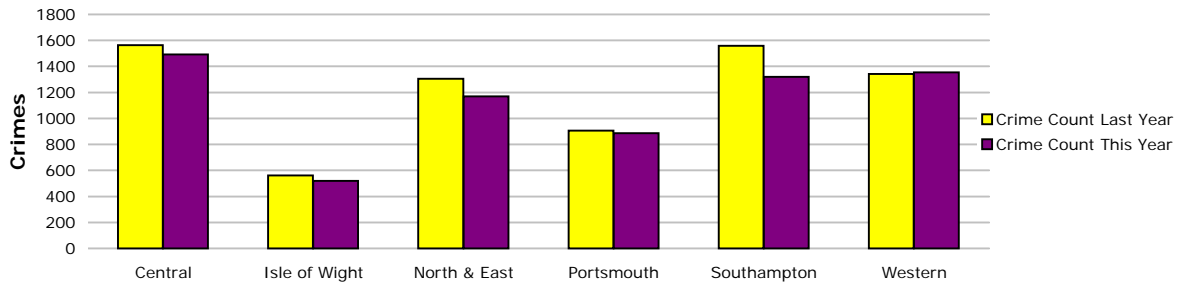
Anti-social behaviour - relates to NSIR categories Environmental Damage/Littering, Rowdy & Inconsiderate and Neighbours within the Anti-Social Behaviour Grouping

Safer Neighbourhoods

Criminal damage



| Crimes | Central | Isle of Wight | North & East | Portsmouth | Southampton | Western | Force |
|-------------------------|-------------|---------------|--------------|------------|-------------|-------------|-------------|
| YTD Crimes | 1492 | 520 | 1169 | 886 | 1321 | 1354 | 6742 |
| YTD Target | 1250.6 | 448.9 | 1030.8 | 712.4 | 1220.8 | 1058.4 | 5722.0 |
| YTD 07/08 Crimes | 1563 | 562 | 1306 | 906 | 1558 | 1341 | 7236 |
| This month | 783 | 243 | 549 | 459 | 662 | 669 | 3365 |
| % change from 07/08 | -4.54% | -7.47% | -10.49% | -2.21% | -15.21% | 0.97% | -6.83% |



| Detections | Central | Isle of Wight | North & East | Portsmouth | Southampton | Western | Force |
|---------------------------|---------------|---------------|---------------|--------------|--------------|--------------|---------------|
| YTD Detection Rate | 10.99% | 11.92% | 12.66% | 8.13% | 9.92% | 9.75% | 10.52% |
| This month | 11.37% | 13.58% | 12.75% | 8.50% | 11.63% | 10.91% | 11.32% |

Note: Detections refer to Sanction Detections ONLY



Safeguard people

Domestic violence incident arrest rate

Awaiting IT development

Domestic violence victimisation

Placeholder

Repeat victims of domestic violence

Awaiting IT development

Domestic violence OBTJ rate

The Office for Criminal Justice Reform is working on the breakdown as required within this Summary which will be available shortly

Hate crime detection rate

Hate Crime includes all crimes flagged within RMS with a Hate Crime indicator excluding those flagged purely as Police or Domestic

Target >45%

| Year to Date | Central | Isle of Wight | North & East | Portsmouth | Southampton | Western | Force |
|---------------------|---------|---------------|--------------|------------|-------------|---------|---------------|
| Incidents | 157 | 32 | 106 | 121 | 143 | 90 | 649 |
| Crimes | 119 | 27 | 62 | 133 | 114 | 69 | 524 |
| Detections | 29 | 8 | 25 | 25 | 43 | 17 | 147 |
| Detection Rate | 24.37% | 29.63% | 40.32% | 18.80% | 37.72% | 24.64% | 28.05% |

| Month | Central | Isle of Wight | North & East | Portsmouth | Southampton | Western | Force |
|----------------|---------|---------------|--------------|------------|-------------|---------|---------------|
| Incidents | 73 | 18 | 60 | 58 | 74 | 45 | 328 |
| Crimes | 55 | 15 | 29 | 53 | 57 | 34 | 243 |
| Detections | 11 | 5 | 12 | 7 | 21 | 11 | 67 |
| Detection Rate | 20.00% | 33.33% | 41.38% | 13.21% | 36.84% | 32.35% | 27.57% |

Sexual offender reoffending rate

Placeholder

Protect our communities

Number of Rainbow visits

Placeholder

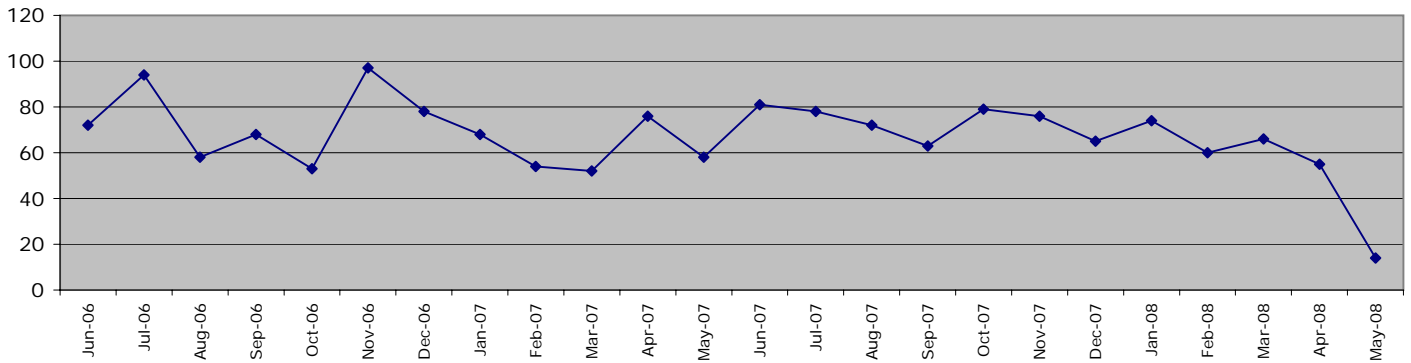
Dangerous sites assessed as green

Placeholder

Road traffic casualties

Fatal/serious injury casualties - all victims

Data shown is up to 8 May 2008



The Force target 2008/2009 is for less than 938 casualties, which equates to less than 98 in 38 days

YTD 8 May 2008 = 69 casualties

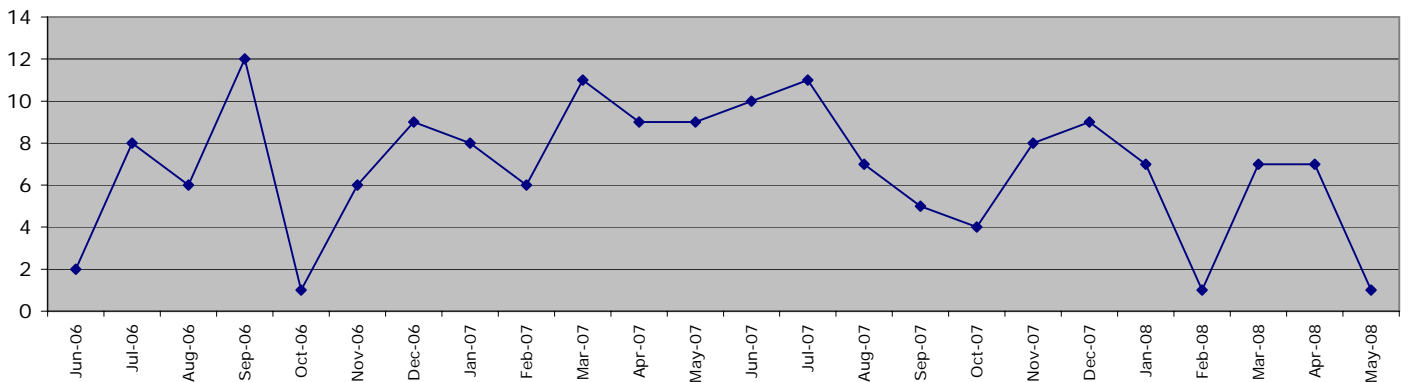
| | Central | Isle of Wight | North&East | Portsmouth | Southampton | Western | Force |
|---------------------------|---------|---------------|------------|------------|-------------|---------|------------|
| April 2008 - 8 May 2008 | 11 | 9 | 17 | 8 | 5 | 19 | 69 |
| of these, fatalities were | 1 | 1 | 0 | 0 | 0 | 0 | 2 |
| April 2007 - 31 May 2007 | 37 | 14 | 29 | 8 | 8 | 38 | 134 |

NOTE: YTD numbers may change as the accident record data are updated each month

NOTE: The casualties in East Hampshire have all been attributed to North & East OCU in the absence of a breakdown by OCUs

Fatal/serious injury casualties - victims under 16 years

Data shown is up to 8 May 2008



The DETR target is for a 50% reduction in child casualties by 2010 from 164 to 82 (Target 2008/2009 = 94)

| | Central | Isle of Wight | North&East | Portsmouth | Southampton | Western | Force |
|---------------------------|---------|---------------|------------|------------|-------------|---------|-----------|
| April 2008 - 8 May 2008 | 2 | 1 | 2 | 1 | 0 | 2 | 8 |
| of these, fatalities were | 0 | 0 | 0 | 0 | 0 | 0 | 0 |
| April 2007 - 31 May 2007 | 6 | 1 | 4 | 2 | 1 | 4 | 18 |

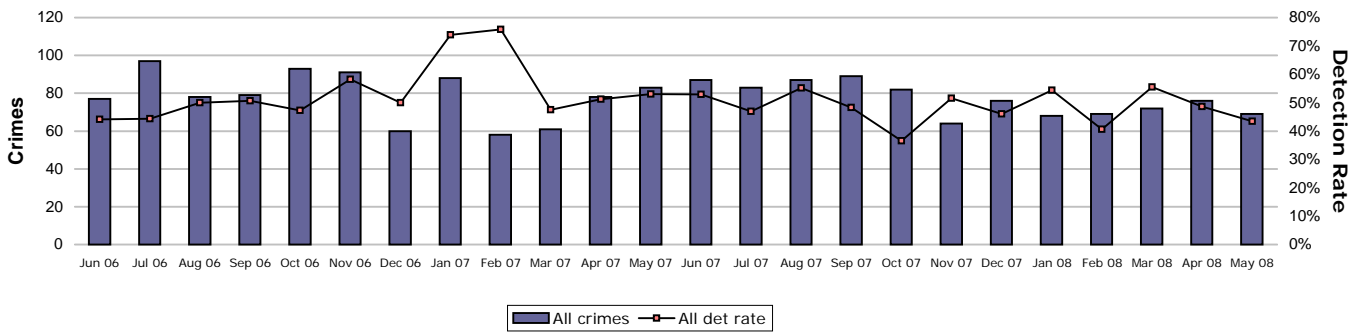
NOTE: YTD numbers may change as the accident record data are updated each month

NOTE: The casualties in East Hampshire have all been attributed to North & East OCU in the absence of a breakdown by OCUs

Prevent, reduce and detect crime

Serious violent crime

Serious violent crime consists of crimsec codes 1, 2, 4.1-4.4, 4.6, 4.8, 5A, 5B, 5C, 8F, 8H and 37.1



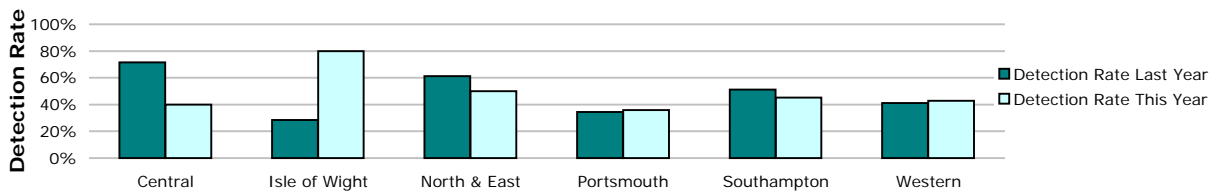
| Crimes | Central | Isle of Wight | North & East | Portsmouth | Southampton | Western | Force |
|-------------------------|-----------|---------------|--------------|------------|-------------|-----------|---------------|
| YTD Crimes | 40 | 15 | 20 | 25 | 31 | 14 | 145 |
| YTD Target | 25.6 | 13.7 | 24.7 | 28.2 | 41.4 | 13.0 | 146.7 |
| YTD 07/08 Crimes | 35 | 7 | 31 | 32 | 39 | 17 | 161 |
| This month | 13 | 9 | 9 | 15 | 16 | 7 | 69 |
| % change from 07/08 | 14.29% | 114.29% | -35.48% | -21.88% | -20.51% | -17.65% | -9.94% |



Detections

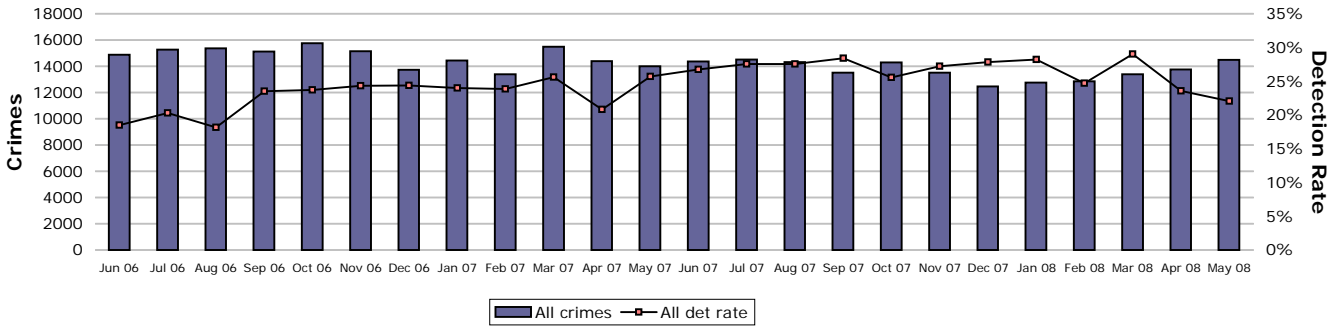
| Target >50% | Central | Isle of Wight | North & East | Portsmouth | Southampton | Western | Force |
|---------------------------|---------------|---------------|---------------|---------------|---------------|---------------|---------------|
| YTD Detection Rate | 40.00% | 80.00% | 50.00% | 36.00% | 45.16% | 42.86% | 46.21% |
| This month | 69.23% | 55.56% | 100.00% | 6.67% | 25.00% | 28.57% | 43.48% |

Note: Detections refer to Sanction Detections ONLY

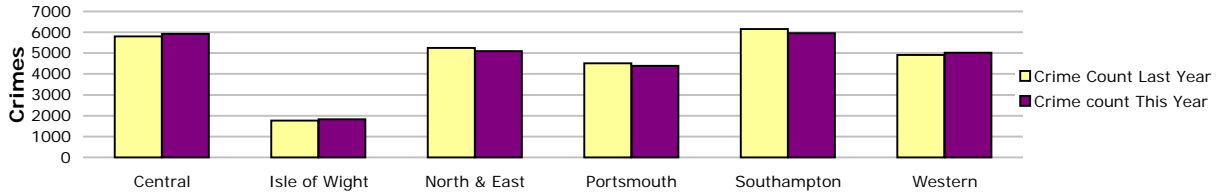


Prevent, reduce and detect crime

All crime



| Crimes | Central | Isle of Wight | North & East | Portsmouth | Southampton | Western | FORCE |
|-------------------------|---------|---------------|--------------|------------|-------------|---------|----------------|
| YTD Crimes | 5931 | 1829 | 5103 | 4386 | 5963 | 5025 | 28237 |
| YTD Target | 5468.9 | 1848.6 | 5021.4 | 4141.8 | 5650.9 | 4606.8 | 26738.4 |
| YTD 07/08 Crimes | 5797 | 1772 | 5243 | 4507 | 6154 | 4914 | 28387 |
| This month | 3095 | 921 | 2592 | 2279 | 2988 | 2612 | 14487 |
| % change from 07/08 | 2.31% | 3.22% | -2.67% | -2.68% | -3.10% | 2.26% | -0.53% |



Detections

Target >25%

| | Central | Isle of Wight | North & East | Portsmouth | Southampton | Western | FORCE |
|---------------------------|---------|---------------|--------------|------------|-------------|---------|---------------|
| YTD Detection Rate | 22.39% | 27.28% | 25.91% | 21.55% | 22.09% | 20.46% | 22.80% |
| This month | 21.68% | 24.65% | 25.54% | 19.61% | 21.95% | 20.37% | 22.05% |

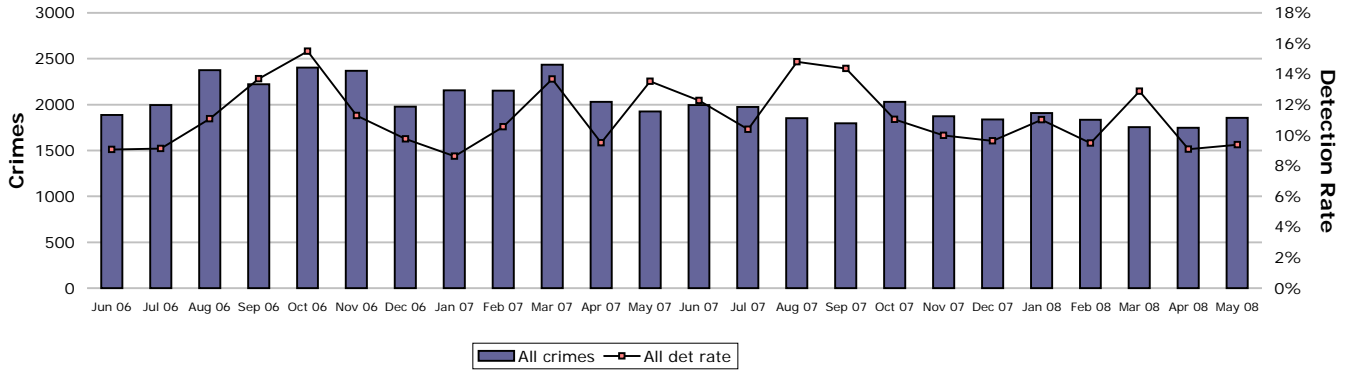
Note: Detections refer to Sanction Detections ONLY



Prevent, reduce and detect crime

Serious acquisitive crime

Serious acquisitive crime consists of crimsec codes 28, 29, 34A, 34B, 37/2, 45 and 48

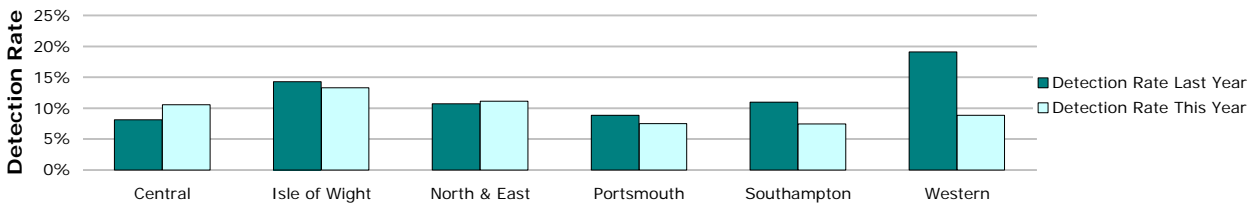


| Crimes | Central | Isle of Wight | North & East | Portsmouth | Southampton | Western | FORCE |
|-------------------------|------------|---------------|--------------|------------|-------------|------------|---------------|
| YTD Crimes | 635 | 173 | 674 | 613 | 831 | 678 | 3604 |
| YTD Target | 661.8 | 158.8 | 731.2 | 613.3 | 831.8 | 742.7 | 3739.6 |
| YTD 07/08 Crimes | 740 | 161 | 710 | 838 | 830 | 675 | 3954 |
| This month | 307 | 86 | 340 | 338 | 423 | 361 | 1855 |
| % change from 07/08 | -14.19% | 7.45% | -5.07% | -26.85% | 0.12% | 0.44% | -8.85% |



| Detections | Central | Isle of Wight | North & East | Portsmouth | Southampton | Western | FORCE |
|--------------------|---------|---------------|--------------|------------|-------------|---------|--------------|
| Target > 15% | | | | | | | |
| YTD Detection Rate | 10.55% | 13.29% | 11.13% | 7.50% | 7.46% | 8.85% | 9.24% |
| This month | 14.01% | 17.44% | 10.88% | 3.55% | 7.33% | 9.97% | 9.38% |

Note: Detections refer to Sanction Detections ONLY



Prevent, reduce and detect crime

Gun crime rate

| | Central | Isle of Wight | North & East | Portsmouth | Southampton | Western | Force |
|---------------------|---------|---------------|--------------|------------|-------------|---------|---------------|
| YTD May 2008 | 3 | 2 | 6 | 3 | 4 | 3 | 21 |
| YTD May 2007 | 9 | 1 | 4 | 8 | 5 | 5 | 32 |
| % change from 07/08 | -66.7% | 100.0% | 50.0% | -62.5% | -20.0% | -40.0% | -34.4% |

Knife crime rate

| | Central | Isle of Wight | North & East | Portsmouth | Southampton | Western | Force |
|---------------------|---------|---------------|--------------|------------|-------------|---------|-------------|
| YTD May 2008 | 24 | 10 | 24 | 34 | 39 | 33 | 164 |
| YTD May 2007 | 26 | 7 | 29 | 33 | 46 | 19 | 160 |
| % change from 07/08 | -7.7% | 42.9% | -17.2% | 3.0% | -15.2% | 73.7% | 2.5% |

Serious sexual crime OBTJ rate

This measure currently shows a breakdown of OBTJ into Tiers 1-3 as is the case nationally

The Office for Criminal Justice Reform is working on the breakdown as required within this Summary which will be available shortly

| OBTJ Crime categories | OBTJ Rate | | |
|---|------------|-------------|----------|
| | January 08 | February 08 | March 08 |
| Tier 1: Serious Violent & Sexual Offences | 39% | 40% | 39% |
| Tier 2: Serious Acquisitive Offences | 11% | 11% | 11% |
| Tier 3 All other recorded crime | 29% | 29% | 29% |

Murder offences

2008/2009 target = <16 murder offences

| | Central | Isle of Wight | North & East | Portsmouth | Southampton | Western | Force |
|---------------------|---------|---------------|--------------|------------|-------------|---------|---------------|
| YTD May 2008 | 0 | 0 | 1 | 0 | 0 | 0 | 1 |
| YTD May 2007 | 1 | 0 | 0 | 0 | 1 | 1 | 3 |
| % change from 07/08 | | | | | | | -66.7% |

For more information, please go to the Specialist Operations - 7 OCU page

Asset recovery

Placeholder

Prolific and other Priority Offenders (PPOs) convictions

Currently the data available only enables us to report on the number of convictions recorded against PPOs. The SPI measure and Force target are to be based on the conviction rate, work is being undertaken to enable reporting on this measure in line with guidance.

| Guilty Verdict | January 08 | February 08 | March 08 |
|---------------------------------------|------------|-------------|----------|
| Prolific and other Priority Offenders | 3 | 1 | 2 |
| Prolific Young Offenders | 7 | 9 | 13 |

Class A drugs sanction detections

2008/2009 target = 400

| | Central | Isle of Wight | North & East | Portsmouth | Southampton | Western | Crime | Operations | No OIC | Force |
|---------------------|---------|---------------|--------------|------------|-------------|---------|---------|------------|--------|---------------|
| YTD May 2008 | 2 | 5 | 10 | 5 | 4 | 3 | 26 | 1 | 6 | 62 |
| YTD May 2007 | 1 | 4 | 13 | 3 | 3 | 2 | No data | No data | 3 | 29 |
| % change from 07/08 | 100.0% | 25.0% | -23.1% | 66.7% | 33.3% | 50.0% | No data | No data | 100.0% | 113.8% |

Drug Intervention Measures (DIMs)

| | Central | Isle of Wight | North & East | Portsmouth | Southampton | Western | Crime | Force |
|---------------------|------------------------------------|---------------|--------------|------------|-------------|---------|-------|-----------|
| YTD May 2008 | 24 | 0 | 13 | 32 | 17 | 2 | 0 | 88 |
| YTD May 2007 | 2007/2008 data available from July | | | | | | | |
| % change from 07/08 | 2007/2008 data available from July | | | | | | | |

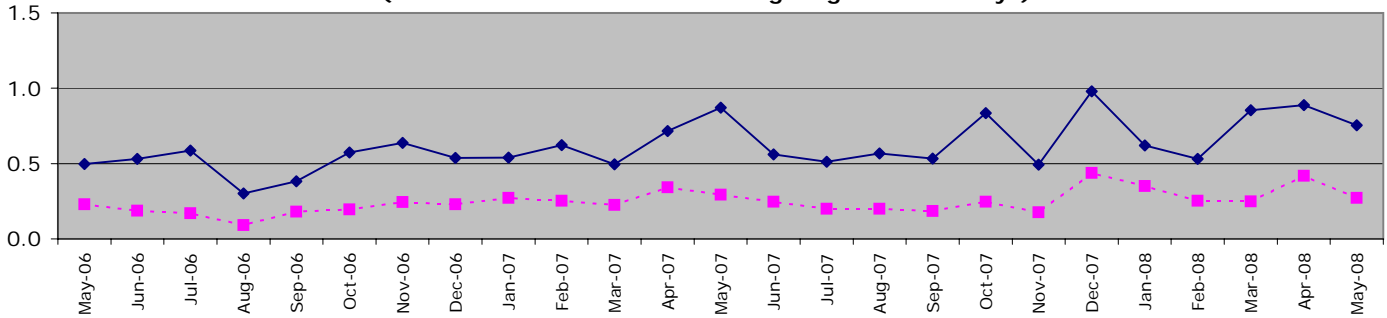
Organisational management

All Police officer sickness YTD = **1.64**

All Police officer sickness May = **0.75**

Police officers in OCUs

**Sickness and injury absence days per officer by month
(broken line shows data excluding long-term sick days)**



Force target for 08/09 = 7.5 days or fewer per officer (1.25 for 2 months)

YTD = 1.64 days lost per officer

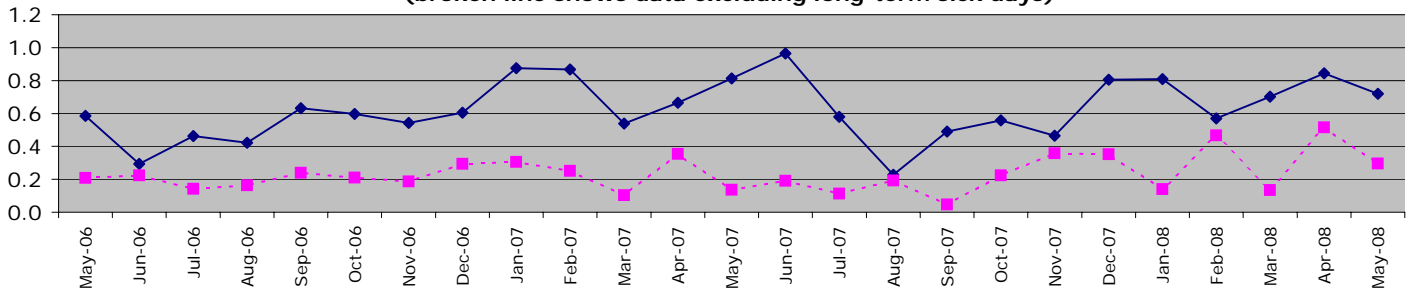
| | Central | Isle of Wight | North & East | Portsmouth | Southampton | Western | Crime | Operations | OCU Totals |
|---------------------|---------|---------------|--------------|------------|-------------|---------|--------|------------|------------|
| YTD Apr 08 - May 08 | 1.65 | 1.18 | 1.06 | 2.35 | 1.81 | 1.80 | 1.10 | 2.10 | 1.64 |
| YTD Apr 07 - May 07 | 1.32 | 1.05 | 1.13 | 1.61 | 0.99 | 1.47 | 1.39 | 1.53 | 1.32 |
| This month | 0.89 | 0.31 | 0.61 | 1.27 | 0.43 | 0.69 | 0.59 | 1.08 | 0.75 |
| % change | 24.6% | 12.5% | -6.5% | 45.9% | 82.5% | 21.8% | -20.8% | 37.1% | 24.8% |

Sickness/injury days lost by officer in May (last 2 years)



Police officers not in OCUs

**Sickness and injury absence days per police officer by month
(broken line shows data excluding long-term sick days)**

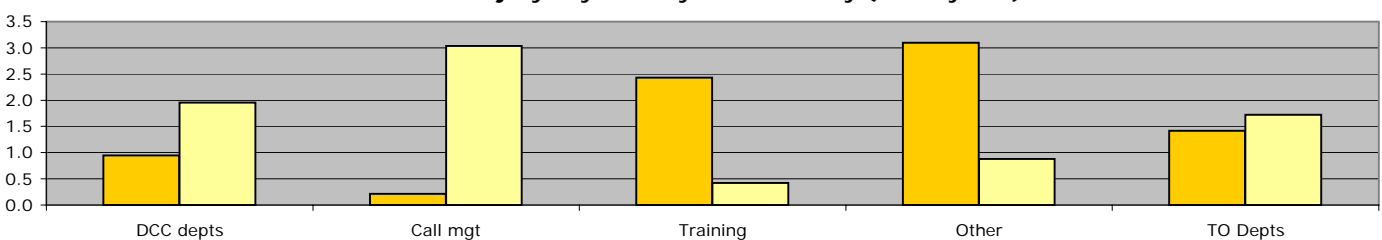


Force target for 08/09 = 7.5 days or fewer per officer (1.25 for 2 months)

YTD = 1.56 days lost per officer

| | DCC depts | Call mgt | Training | Other | TO Depts | Non-OCU Totals |
|---------------------|-----------|----------|----------|--------|----------|----------------|
| YTD Apr 08 - May 08 | 1.96 | 3.04 | 0.42 | 0.88 | 1.72 | 1.56 |
| YTD Apr 07 - May 07 | 0.95 | 0.21 | 2.43 | 3.10 | 1.42 | 1.48 |
| This month | 0.84 | 1.43 | 0.32 | 0.82 | 0.38 | 0.72 |
| % change | 106.6% | 1323.6% | -82.6% | -71.5% | 21.8% | 5.4% |

Sickness/injury days lost by officer in May (last 2 years)



Organisational management

"Other" includes CC, SO and DoF Portfolios as well as OS Portfolio excluding Call Management and Training

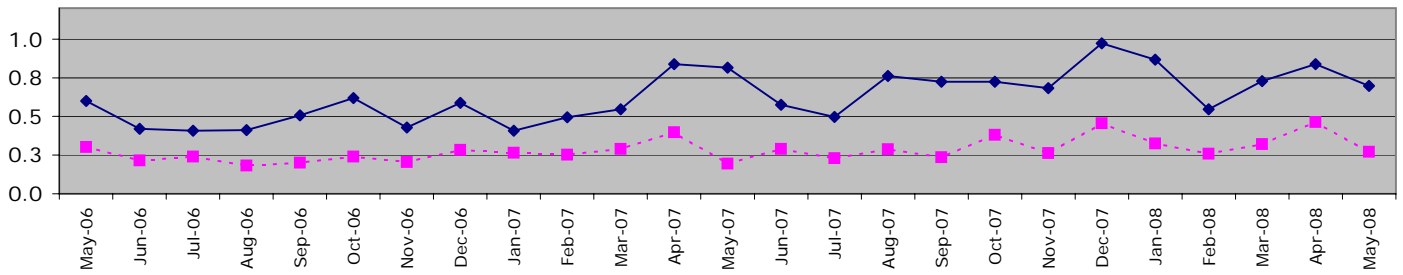
Organisational management

All Police staff sickness YTD = **1.52**

All Police staff sickness May = **0.73**

Police staff in OCUs

**Sickness and injury absence days per police staff member by month
(broken line shows data excluding long-term sick days)**

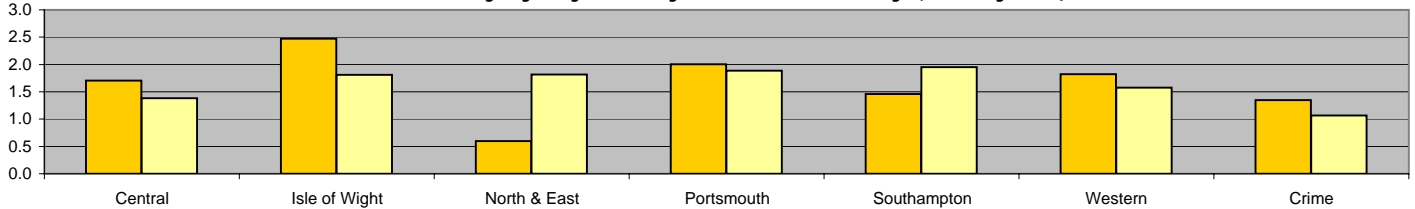


Force target for 08/09 = 7.5 days or fewer per staff member (1.25 for 2 months)

YTD = 1.54 days lost per staff member

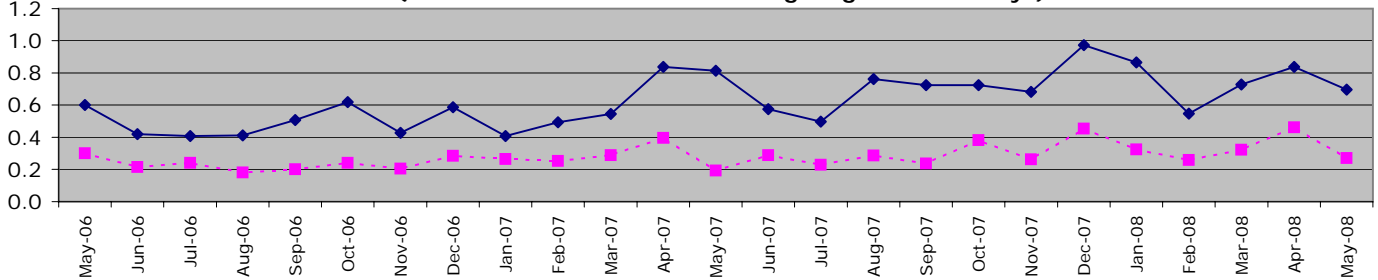
| | Central | Isle of Wight | North & East | Portsmouth | Southampton | Western | Crime | Operations | OCU Totals |
|---------------------|---------|---------------|--------------|------------|-------------|---------|--------|------------|------------|
| YTD Apr 08 - May 08 | 1.38 | 1.81 | 1.81 | 1.89 | 1.95 | 1.58 | 1.07 | 0.95 | 1.54 |
| YTD Apr 07 - May 07 | 1.71 | 2.47 | 0.60 | 2.01 | 1.46 | 1.82 | 1.35 | 0.46 | 1.48 |
| This month | 0.55 | 0.80 | 0.79 | 0.89 | 0.87 | 0.82 | 0.43 | 0.56 | 0.70 |
| % change | -19.1% | -26.8% | 202.2% | -5.8% | 33.6% | -13.3% | -20.9% | 104.4% | 3.8% |

Sickness/injury days lost by Police Staff in May (last 2 years)



Police staff not in OCUs

**Sickness and injury absence days per police staff member by month
(broken line shows data excluding long-term sick days)**

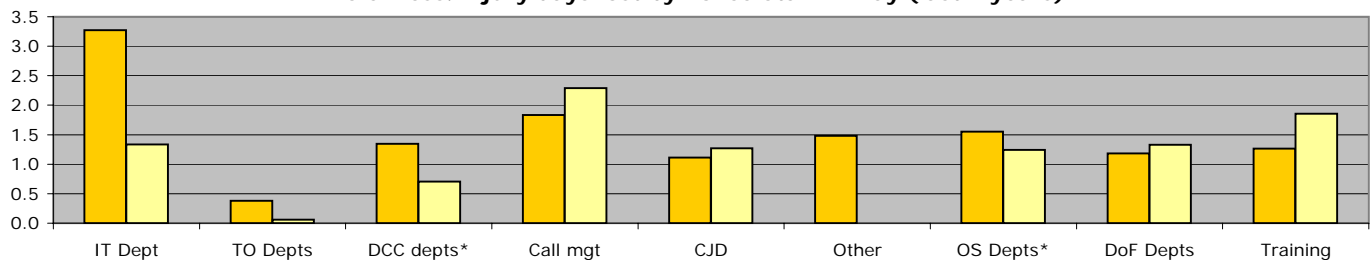


Force target for 08/09 = 7.5 days or fewer per staff member (1.25 for 2 months)

YTD = 1.51 days lost per staff member

| | IT Dept | TO Depts | DCC depts* | Call mgt | CJD | Other | OS Depts* | DoF Depts | Training | Non-OCU Totals |
|---------------------|---------|----------|------------|----------|--------|--------|-----------|-----------|----------|----------------|
| YTD Apr 08 - May 08 | 1.34 | 0.06 | 0.70 | 2.29 | 1.27 | 0.00 | 1.24 | 1.33 | 1.86 | 1.51 |
| YTD Apr 07 - May 07 | 3.27 | 0.38 | 1.35 | 1.84 | 1.11 | 1.48 | 1.55 | 1.18 | 1.27 | 1.57 |
| This month | 0.64 | 0.07 | 0.30 | 1.19 | 0.55 | 0.00 | 1.00 | 0.59 | 1.11 | 0.76 |
| % change | -100% | 251.9% | -95.4% | -61.7% | 106.5% | -14.2% | -100.0% | 5.3% | 4.9% | 18.1% |

Sickness/injury days lost by Police Staff in May (last 2 years)



* DCC Depts includes all depts except IT; OS Depts include all OS depts except CJD, Training & Call Mgt as reported separately

Organisational management

Other departments are Chief Constable and SO depts (exc 7 & 8 OCU staff as reported in OCU pages)

Organisational management

Overdue PDRs

Police officer PDRs - police officers in OCUs

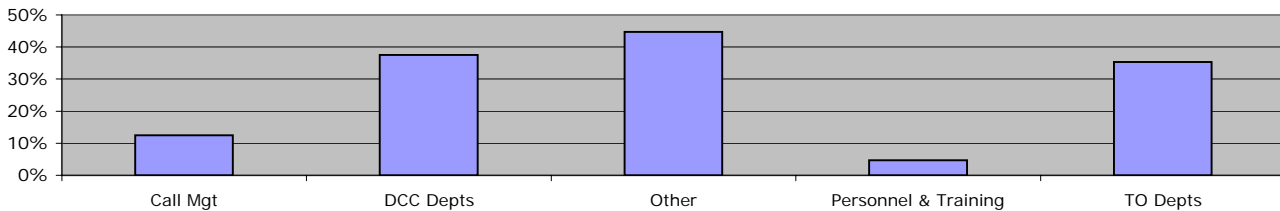
PDRs overdue by 1 month or more - police officers on OCUs



| May 2008 | Central | Isle of Wight | North & East | Portsmouth | Southampton | Western | Crime | Operations |
|------------|---------|---------------|--------------|------------|-------------|---------|-------|------------|
| Overdue | 28 | 18 | 33 | 29 | 17 | 6 | 8 | 27 |
| Population | 623 | 216 | 556 | 431 | 494 | 516 | 436 | 412 |
| % overdue | 4.5% | 8.3% | 5.9% | 6.7% | 3.4% | 1.2% | 1.8% | 6.6% |

Police officer PDRs - police officers not on OCUs

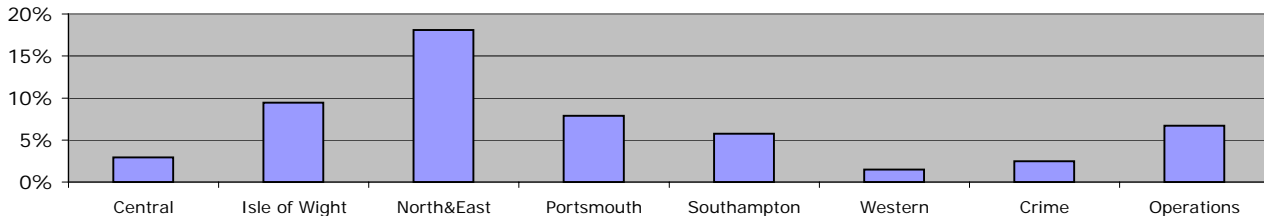
PDRs overdue by 1 month or more - police officers not on OCUs



| May 2008 | Call Mgt | DCC Depts | Other | Personnel & Training | TO Depts |
|------------|----------|-----------|-------|----------------------|----------|
| Overdue | 5 | 9 | 17 | 3 | 12 |
| Population | 40 | 24 | 38 | 64 | 34 |
| % overdue | 12.5% | 37.5% | 44.7% | 4.7% | 35.3% |

Police staff PDRs - police staff in OCUs

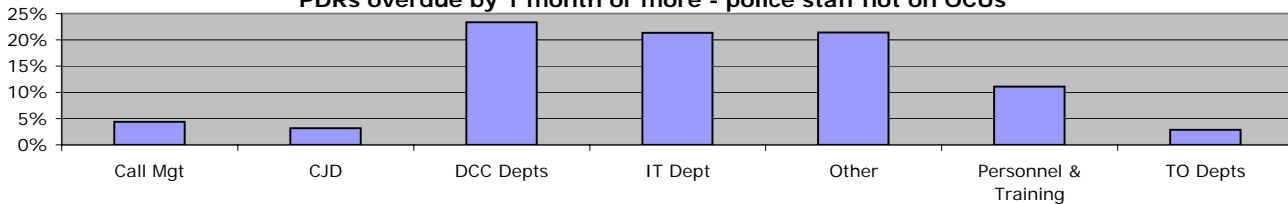
PDRs overdue by 1 month or more - police staff on OCUs



| May 2008 | Central | Isle of Wight | North&East | Portsmouth | Southampton | Western | Crime | Operations |
|------------|---------|---------------|------------|------------|-------------|---------|-------|------------|
| Overdue | 7 | 10 | 36 | 15 | 12 | 3 | 7 | 9 |
| Population | 240 | 106 | 199 | 190 | 209 | 204 | 282 | 134 |
| % overdue | 2.9% | 9.4% | 18.1% | 7.9% | 5.7% | 1.5% | 2.5% | 6.7% |

Police staff PDRs - police staff not in OCUs

PDRs overdue by 1 month or more - police staff not on OCUs



| May 2008 | Call Mgt | CJD | DCC Depts | IT Dept | Other | Personnel & Training | TO Depts |
|------------|----------|------|-----------|---------|-------|----------------------|----------|
| Overdue | 19 | 12 | 35 | 25 | 46 | 18 | 1 |
| Population | 435 | 377 | 150 | 117 | 215 | 162 | 35 |
| % overdue | 4.4% | 3.2% | 23.3% | 21.4% | 21.4% | 11.1% | 2.9% |

Organisational management

Minority Ethnic Officer Recruitment

| | All recruits | Minority ethnic recruits | % |
|--------------|--------------|--------------------------|----|
| YTD May 2008 | 6 | 0 | 0% |

Female Officer Representation

| | Male strength | Female strength | % |
|--------------|---------------|-----------------|-------|
| YTD May 2008 | 2811.6 | 1011.3 | 26.5% |

NCRS compliance

| | Central | Isle of Wight | North & East | Portsmouth | Southampton | Western | Crime |
|-------------|-------------|---------------|--------------|-------------|-------------|-------------|---------|
| NCRS audits | Fair 82% | Fair 82% | Fair 84% | Poor 72% | Poor 64% | Fair 85% | No data |

Note: NCRS audit data relates to a rolling 12 mth period

| | | | | | | | |
|-----------------|-------|-------|-------|-------|-------|-------|---------|
| Self-Inspection | 91.0% | 85.0% | 80.0% | 66.0% | 81.0% | 90.0% | No data |
|-----------------|-------|-------|-------|-------|-------|-------|---------|

Note: Self-Inspections - only appealed records are moderated by the Force Crime Registrar

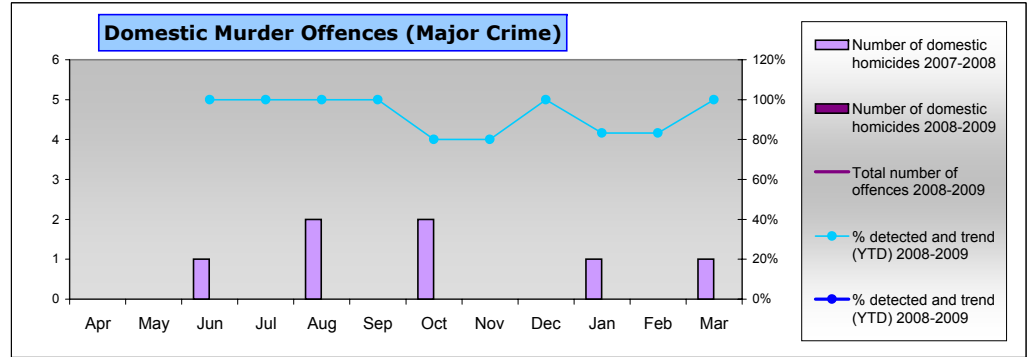
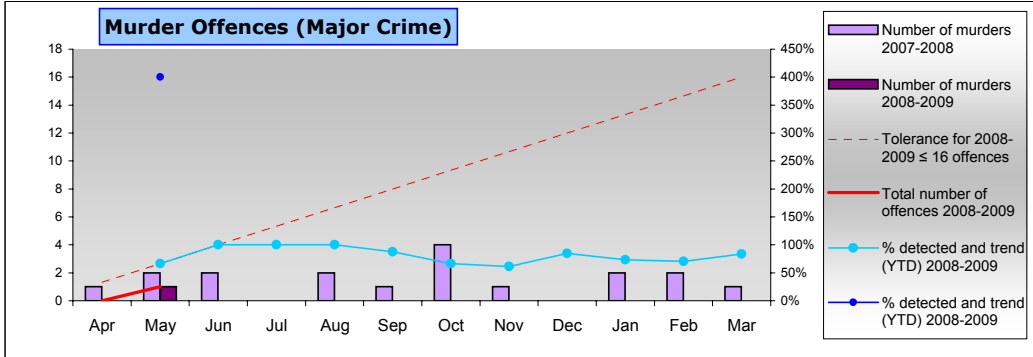
Budget spend

No data currently, however, Finance Department have advised that the data will be available for the next Performance Summary

Efficiency savings

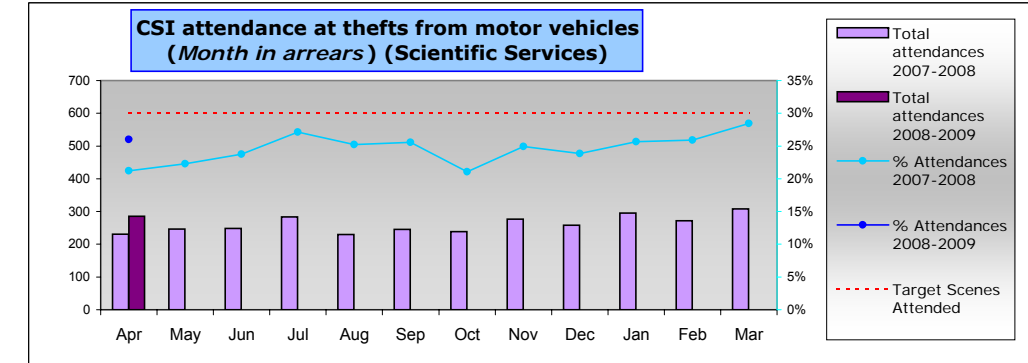
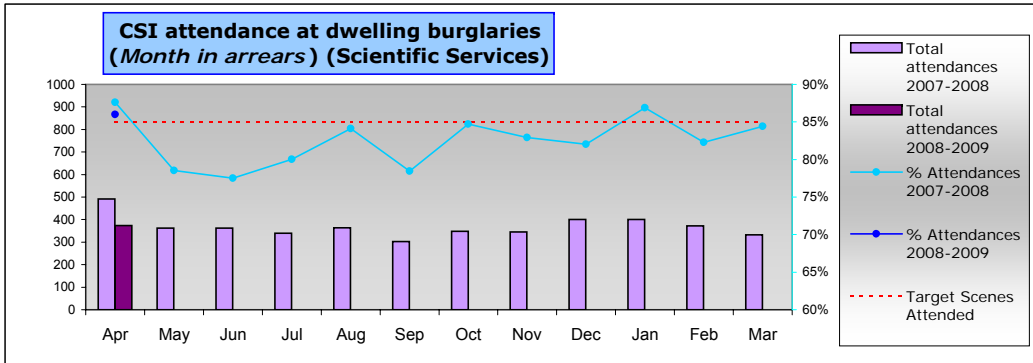
As at 31 May 2008, £2.44m which is a carry forward from 2007/2008

Specialist Operations - 7 OCU



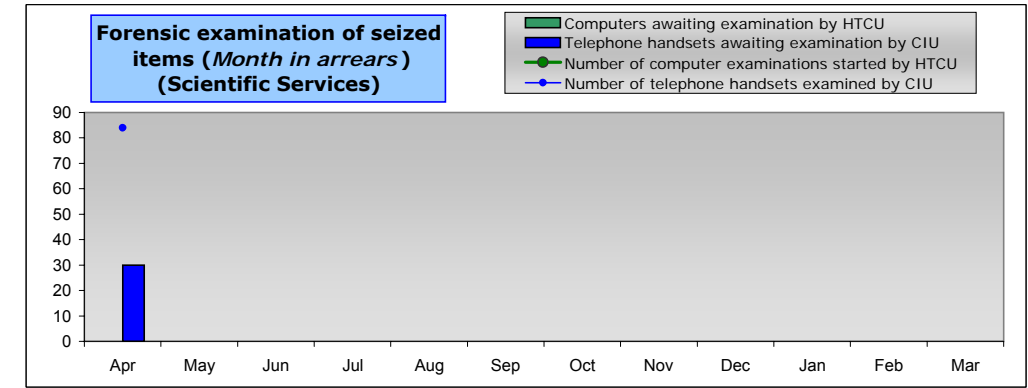
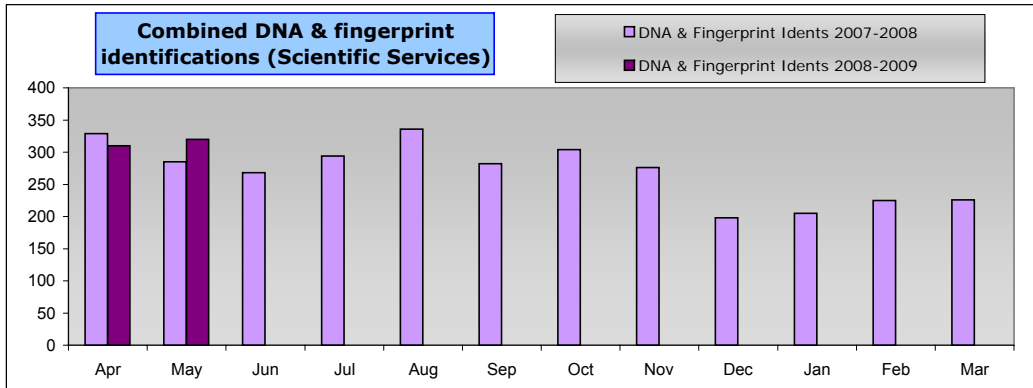
All murder offences this year and last year
The target is ≤ 16 offences for the current year
Detection target for murder is 100%

Domestic murder offences this year and last year
Detection target for murder is 100%



Burglary dwelling scene attendance rates. Target ≥ 85%

Theft from motor vehicle scene attendance rates. Target ≥ 30%



Combined DNA & fingerprint identifications this year and last year

Number of computer examinations started by HTCUC
Number of computers awaiting examination by HTCUC
Number of telephone handsets examined by CIU
Number of telephone handsets awaiting examination by CIU

Specialist Operations - 8 OCU

| Patrol Availability | | | | |
|---------------------|-------------------------|------------|------------------------|------------|
| | Current month 07 | YTD 07 | Current Month 08 | YTD 08 |
| ASU | 93% | 93% | 98% | 99% |
| CT&DE | Not previously recorded | | 95% | 82% |
| DSU | 84% | 83% | 81% | 75% |
| FSU | 86% | 86% | 88% | 87% |
| MSU | 89% | 84% | 86% | 85% |
| OPPU | 91% | 94% | 97% | 89% |
| TFT | 83% | 83% | 81% | 78% |
| ARV | Not previously recorded | | 98% | 98% |
| RPU | Not previously recorded | | Not currently recorded | |
| Total | 87% | 87% | 91% | 87% |

| Pre-Planned Operations YTD* | | | | | | | | |
|-----------------------------|------------------------------|-----------|-----------|-----------|-----------|-----------|----------|------------|
| Op. Name | OCU Supported | | | | | | | Total |
| | 1 | 2 | 3 | 4 | 5 | 6 | Other | |
| Radon | | 1 | 2 | 6 | | | | 9 |
| Advasar | | | 8 | | | | | 8 |
| Cabot | | | | | 1 | | | 1 |
| Other | 21 | 11 | 17 | 14 | 26 | 23 | | 112 |
| Total | 21 | 12 | 27 | 20 | 27 | 23 | 0 | 130 |
| Arrests | Data not currently available | | | | | | | 0 |
| FPNs | | | | | | | | 0 |
| Seizures | | | | | | | | 0 |
| Other | | | | | | | | 0 |
| Total | 0 | 0 | 0 | 0 | 0 | 0 | 0 | 0 |

*Data has not yet been provided by all 8 OCU Units

| ANPR Operations YTD | | | | | | | | |
|---------------------|------------------------------|----------|----------|----------|----------|----------|----------|----------|
| | OCU Supported | | | | | | | Total |
| | 1 | 2 | 3 | 4 | 5 | 6 | Other | |
| No. of Ops | Data not currently available | | | | | | | 0 |
| Arrests | | | | | | | | 0 |
| FPNs | | | | | | | | 0 |
| Seizures | | | | | | | | 0 |
| Other | | | | | | | | 0 |
| Total | 0 | 0 | 0 | 0 | 0 | 0 | 0 | 0 |

| Interventions in support of OCUs and Force Strategy YTD | | | | | | | | |
|---|------------|------------------------------|-------------|------------|--------------------------------|-----|-----|------|
| | Arrests | CT Activity | | FPNs | | C12 | S44 | S165 |
| | | No. of visits | Hours | E1 | Other | | | |
| ASU | | Data not currently available | | | Data to be included next month | | | |
| CT&DE | 0 | | | 0 | | 0 | 0 | |
| DSU | 55 | | | 0 | | 128 | 5 | |
| FSU | 82 | | | 2 | | 201 | 40 | |
| MSU | 3 | | | 0 | | 0 | 0 | |
| OPPU | 0 | | | 0 | | 1 | 0 | |
| TFT | 47 | | | 6 | | 244 | 15 | |
| ARV | 114 | | | 9 | | 174 | 34 | |
| RPU | 443 | | | 8 | | 254 | 68 | 578 |
| Total | 744 | 25 | 1002 | 162 | 578 | | | |

Operational Services

Criminal Justice Issues for April 2008

Main issues for April: Table 1 shows that there is considerable variance in the number of conditional cautions issued across the force. The number of cautions are lower than would be anticipated. Of those cases received by the Prosecution Support Team (PST), it should be noted that there are substantial differences between OCUs in the number of cautions returned to officers for either a reword or NFA (Table 2). Table 3 shows that the force secures a charge in three quarters of cases that reach the CPS for a charging decision. Table 4 shows that there is considerable variation between OCUs for the percentage of photographs taken at first arrest.

Table 1

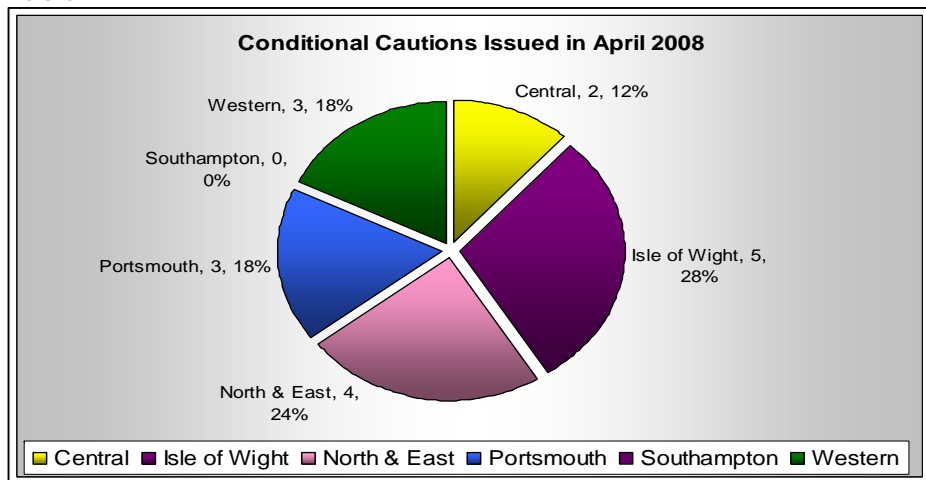


Table 2

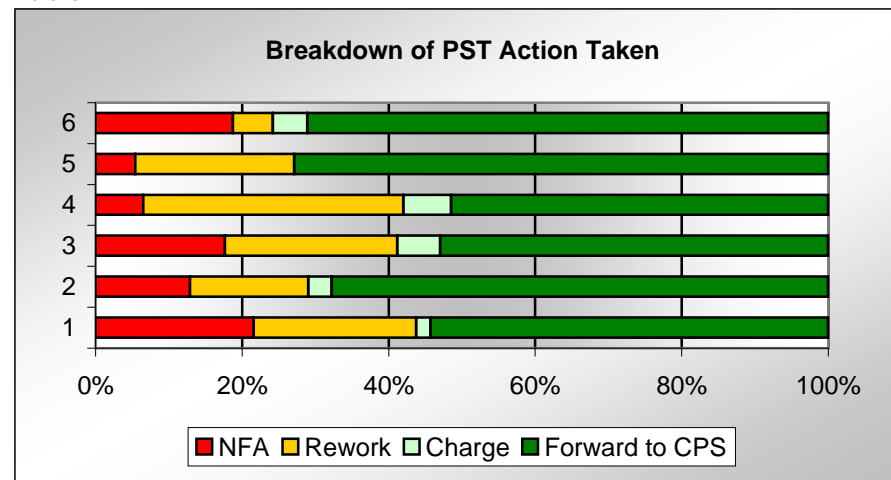


Table 3

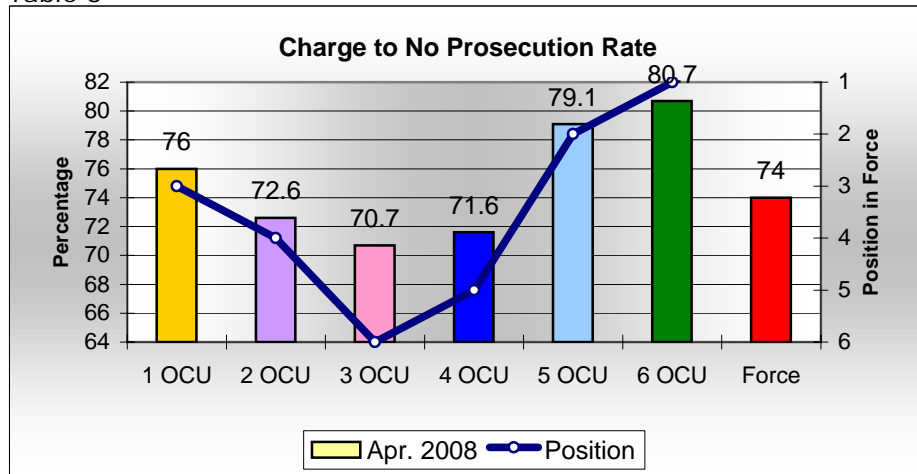


Table 4

