



Force Performance Summary

August 2008

Summary

This document contains a strategic overview of the Constabulary's performance. It has a variety of performance measures within it, but for the first time our performance is aligned to the Force Control Strategy.

It is a headline document that will enable our customers, both internally and externally, to easily assess performance in key domains. Additionally with the introduction of the national performance framework called the Assessment of Police and Community Safety (APACS), it is crucial that we become focused and more accountable.

At the front of the document there are several matrices that reflect our performance against our targets, firstly year to date and secondly relevant for that particular month.

Performance in key areas is then explored in more depth with an indication of where each measure has originated - for example, APACS Statutory Performance Indicator (SPI) or a Force Control Strategy (FCS) measure.

This document is then taken forward by key stakeholders within the organisation to the Force Performance Review Group, where it is used to highlight areas of both best practice and those for development.

This is an evolving document and as such, the content may alter over time and any feedback would be welcomed by the Performance Review Team.

Index

Page

Year to date performance matrix

4-5

Monthly performance matrix

6-7

including notes on matrices terminology

Safer Neighbourhoods

8	Overall satisfaction	SPI 1.1	FCS	Consultation & Research Team
8	Being kept informed		FCS	Consultation & Research Team
8	Comparative satisfaction of minority ethnic groups	SPI 1.2		Consultation & Research Team
8	Satisfaction of victims of racist incidents	SPI 1.3		Consultation & Research Team
8	Confidence in local police	SPI 2.3	FCS	iQuanta - Quarterly
8	Understanding community issues		FCS	iQuanta - Quarterly
8	Perception of anti-social behaviour	SPI 4.1		iQuanta - Quarterly
8	Perception of drug use in local area	SPI 4.3	FCS	iQuanta - Quarterly
8	Perception of drunk or rowdy behaviour	SPI 4.2		iQuanta - Quarterly
9	Assault with less serious injury	SPI 5.3	FCS	Business Objects
10	Successful neighbourhood priorities		FCS	Neighbourhood Policing Lead - ACC 'TO' Dept
10	Anti-social use of motor vehicle (NSIR)		FCS	PRT - NSIR Return
10	Anti-social behaviour (NSIR)		FCS	PRT - NSIR Return
11	Criminal damage		FCS	Business Objects

Safeguard people

12	DV Incident arrest rate		FCS	Awaiting IT Development Work
12	DV victimisation		FCS	N/A
12	Repeat victims of domestic violence		FCS	Business Objects
12	Domestic violence OBJT rate		FCS	Criminal Justice Department
12	Hate crime detection rate		FCS	Business Objects
12	Sexual offender reoffending rate		FCS	N/A

Protect our communities

13	Number of Rainbow visits		FCS	N/A
13	Dangerous sites assessed as green		FCS	N/A
13	Road traffic casualties	SPI 9.1	FCS	8 OCU Performance Team

Prevent, reduce and detect crime

14	Serious violent crime and sanction detections	SPI 5.1	FCS	Business Objects
15	All crime		FCS	Business Objects
16	Serious acquisitive crime and sanction detections	SPI 5.2	FCS	Business Objects
17	Gun crime rate	SPI 5.5		Business Objects and Manual Checking
17	Knife crime rate	SPI 5.6		Business Objects and Manual Checking
17	Serious sexual crime OBJT rate	SPI 6.4	FCS	Criminal Justice Department
17	Murder offences		FCS	Business Objects
17	Asset recovery	SPI 8.1	FCS	Specialist Investigation Department
17	PPO convictions	SPI 10.1	FCS	Criminal Justice Department
17	Class A drugs sanction detections		FCS	Business Objects
17	Drug Intervention Measures (DIMs)			Force Intelligence

Organisational management

18	Police officer sickness	SPI 13.1	FCS	PRT - Delphi + Personnel - Staffing Figures
19	Police staff sickness	SPI 13.2	FCS	PRT - Delphi + Personnel - Staffing Figures
20	Overdue PDRs			Personnel
21	Minority Ethnic Officer Recruitment	SPI 3.1		Personnel
21	Female Officer Representation	SPI 3.2		Personnel
21	NCRS compliance		FCS	Force Incident & Crime Registrar

Specialist Operations - 7 OCU

22 Murder & domestic murder offences (SPI 5.4), CSI attendance, DNA & fingerprint identifications, forensic examinations

Specialist Operations - 8 OCU

23 Patrol availability, pre-planned operations, ANPR operations, Interventions in support of OCUs & Force Strategy

Operational Services

24 Performance highlights relating to Operation Services Departments which include Call Management, Criminal Justice Department and Personnel and Training

Restricted data

25

FCS = Force Control Strategy

PRT = Performance Review Team

SPI - Statutory Performance Indicator

Year to date performance matrix

This matrix is based on year to date comparison with 2007/2008 performance

		Target	Actual	Central	Isle of Wight	North & East	Portsmouth	Southampton	Western	Crime	Operations	
Safer Neighbourhoods	Overall satisfaction (data for rolling 12 months)	<62.0%	61.0%	63.0%	65.0%	58.0%	61.0%	60.0%	63.0%	N/A		
	Being kept informed (data for rolling 12 months)	>60.0%	47.0%	46.0%	52.0%	44.0%	45.0%	46.0%	48.0%	N/A		
	Confidence in local police	>58.5%	57.4%	Force level target - to exceed MSG average by 5% whilst not declining on current performance								
	Understanding community issues	>65.7%	65.5%	Force level target - to exceed MSG average by 3.5% whilst not declining on current performance								
	Perception of drug use in local area	<22.6%	23.0%	Force level target - be under MSG average whilst not declining on current performance								
	Assault with less serious injury*	-5.0%	4.2%	-2.9%	-7.6%	6.6%	-5.5%	24.0%	-3.0%	N/A		
	OCU specific targets				-5.91%	-4.52%	0.00%	-4.00%	-8.69%	-4.21%	N/A	
	Successful neighbourhood priorities	>33.0%		Data will be available in September 2008								
	Anti-social use of motor vehicle	-5.0%	-13.0%	-10.7%	-19.2%	-12.6%	-26.4%	-19.3%	6.7%	N/A		
	Anti-social behaviour	-5.0%	-5.0%	-4.6%	-2.7%	1.7%	-10.8%	-7.8%	-4.1%	N/A		
Reduce criminal damage	-12.0%	-9.7%	-12.2%	-13.3%	-4.5%	-8.7%	-15.1%	-4.6%	N/A			
Safer Neighbourhoods - targets achieved			2	3	4	1	3	3	1			
Safeguard people	Domestic violence incident arrest rate	>35.0%		Awaiting IT Development							N/A	
	Repeat victims of domestic violence	-5.0%	1.7%	-3.1%	-1.5%	7.2%	-9.7%	12.9%	2.1%	N/A		
	Hate crime detection rate	>45.0%	34.5%	34.2%	40.0%	29.5%	27.8%	40.7%	33.8%	N/A		
Safeguard people - targets achieved			0	0	0	0	1	0	0			
Protect our communities	Road traffic casualties	<314	271	Owned by Operations OCU							271	
	Protect our communities - targets achieved			1								1

Year to date performance matrix cont'd

This matrix is based on year to date comparison with 2007/2008 performance

		Target	Actual	Central	Isle of Wight	North & East	Portsmouth	Southampton	Western	Crime	Operations	
Prevent, reduce and detect crime	Serious violent crime	-6.0%	-19.9%	12.8%	-6.7%	-32.9%	-41.0%	-22.8%	-17.9%	N/A		
	Serious violent crime SD	>50.0%	53.9%	51.1%	78.6%	63.3%	55.1%	45.5%	46.9%	N/A		
	All crime*	-3.0%	-2.8%	-1.3%	-7.1%	-0.5%	-5.9%	-5.1%	0.0%	N/A		
		OCU specific targets		-2.3%	-2.3%	-1.5%	-1.5%	-4.3%	-5.3%	N/A		
	Serious acquisitive crime*	-2.0%	-5.7%	-8.0%	-7.1%	-1.3%	-11.1%	-2.4%	-6.0%	N/A		
		OCU specific targets		-1.39%	-2.11%	-2.38%	-1.36%	-2.27%	-2.48%	N/A		
	Serious acquisitive crime SD	>15.0%	9.5%	9.6%	15.7%	9.3%	9.4%	8.7%	9.0%	N/A		
	Murder offences	<7	1	Owned by Crime OCU							1	Owned by Crime OCU
	Asset recovery (shown in £1000s)	£1,732.8	£3,803.9	This is a Force measure								
Class A drugs SD	>168	133	Owned by Crime OCU							133	Owned by Crime OCU	
Prevent, reduce and detect crime - targets achieved		5		2	5	2	4	3	2	1		
Organisational management	Police officer sickness	<3.13	3.32	3.44	3.86	2.31	4.33	3.19	3.94	2.69	3.16	
	Police staff sickness	<3.13	3.40	4.08	4.73	3.09	4.42	3.02	3.65	3.09	1.88	
	NCRS compliance	Good	N/A		Fair	Fair	Fair	Poor	Poor	Fair	N/A	
		90.0%			82%	82%	84%	72%	64%	85%	No data	
	Budget spend	<33%	32%	33%	31%	36%	35%	32%	32%	31%	35%	
Efficiency savings	>£10m	£2.44m	This is a Force measure									
Organisational management - targets achieved		1		1	1	2	0	2	1	3	1	
Force Total - targets achieved		9		6	10	5	8	8	4	4	2	

Note: Some areas contained within the Force Control Strategy and Force Target documents do not yet appear in the above matrix. This is because, to date, it has not been possible to establish sufficient baseline data to set a target. Work is ongoing in these areas to establish a baseline. Information in relation to our progress within these areas is contained within the detailed sections of the profile.

Monthly performance matrix

This matrix is based on monthly data compared to force target

		Target	Actual	Central	Isle of Wight	North & East	Portsmouth	Southampton	Western	Crime	Operations	
Safer Neighbourhoods	Assault with less serious injury*	<1163	1259	222	98	210	161	359	209	N/A		
		OCU specific targets		246.0	79.0	204.9	163.1	284.5	185.6	N/A		
	Successful neighbourhood priorities	> 33.0%		Data will be available in September 2008								
	Anti-social use of motor vehicle	<1457	1393	289	92	287	123	246	308	N/A		
		OCU specific targets		302.5	94.5	269.4	139.0	252.2	279.6	N/A		
	Anti-social behaviour	<8105	8880	1807	645	1576	1363	1941	1416	N/A		
		OCU specific targets		1647.1	575.0	1346.3	1227.5	1674.6	1246.5	N/A		
	Reduce criminal damage	<2908	2922	579	227	587	344	644	541	N/A		
	OCU specific targets		635.5	228.1	523.9	362.1	620.4	537.9	N/A			
Safer Neighbourhoods - targets achieved			1	3	2	0	3	1	0			
Safeguard people	Domestic violent incident arrest rate	> 35.0%		Awaiting IT Development							N/A	
	Hate crime detection rate	>45.0%	36.7%	33.3%	120.0%	20.0%	25.7%	40.5%	45.5%	N/A		
Safeguard people - targets achieved			0	0	1	0	0	0	1			
Protect our communities - targets achieved												
Prevent, reduce and detect crime	Serious violent crime	<75	64	9	3	10	7	25	10	N/A		
		OCU specific targets		13.0	7.0	12.6	14.4	21.1	6.6	N/A		
	Serious violent crime SD	>50.0%	50.0%	66.7%	33.3%	70.0%	71.4%	32.0%	50.0%	N/A		
	All crime*	<13588	14014	2810	900	2839	1990	2845	2630	N/A		
		OCU specific targets		2779.3	939.4	2551.9	2104.9	2871.8	2341.1	N/A		
	Serious acquisitive crime*	<1900	1982	359	74	422	357	377	393	N/A		
		OCU specific targets		336.3	80.7	371.6	311.7	422.7	377.4	N/A		
	Serious acquisitive crime SD	>15.0%	7.3%	4.5%	29.7%	11.1%	4.8%	6.1%	4.8%	N/A		
	Asset recovery	£344,483	£186	This is Force measure								
Class A drugs SD	>33	36	Owned by Crime OCU							36	Owned by Crime OCU	

Prevent, reduce and detect crime - targets achieved	3	2	4	2	3	2	1	1	
---	---	---	---	---	---	---	---	---	--

Monthly performance matrix cont'd

This matrix is based on monthly data compared to force target

		Target	Actual	Central	Isle of Wight	North & East	Portsmouth	Southampton	Western	Crime	Operations
Organisational management	Police officer sickness	<0.63	0.67	0.73	0.95	0.63	0.83	0.59	0.69	0.50	0.56
	Police staff sickness	<0.63	0.64	1.03	0.87	0.64	0.61	0.30	0.44	0.76	0.25
Organisational management - targets achieved			0	0	0	0	1	2	1	1	2
Force Total - targets achieved			4	5	7	2	7	5	3	2	2

Note: Some areas contained within the Force Control Strategy and Force Target documents do not yet appear in the above matrix. This is because, to date, it has not been possible to establish sufficient baseline data to set a target. Work is on going in these areas to establish a baseline.information in relation to our progress within these areas is contained within the detailed sections of the profile.

Notes to be read in conjunction with matrices

All citizen focus data	Based on "completely or very satisfied"
OBTJ	Offenders Brought To Justice
Road traffic casualties	All data until 31 July 2008
Budget spend	Data is always one month in arrears
Efficiency savings	3 year target of £30m, notionally £10m per year
SD	Sanction detections
Anti-social use of motor vehicle & behaviour	Data is obtained from NSIR and always 1 month in arrears
Sickness data	Force Actual = total for ALL officers/police staff - including those not in OCU
OCU specific targets	OCU specific targets are rounded to 1 decimal place, the actual figure may therefore seem the same but appear red due to this rounding
Asset recovery	Asset recovery is the sum total of the values of cash forfeitures and confiscation orders
* = variable targets across OCUs for these target areas based on previous performance and MSG position	

Safer Neighbourhoods

Overall satisfaction

Rolling 12 months data relates to: September 07 - August 08; rolling 3 months data relates to June 08 - August 08
Overall satisfaction includes burglary, vehicle crime, violent crime and RTCs

Target 62%	Central	Isle of Wight	North & East	Portsmouth	Southampton	Western	Force	No. Surveys
Rolling 12 months	63%	65%	58%	61%	60%	63%	61%	9315
Rolling 3 months	65%	73%	68%	65%	61%	67%	66%	1893

Being kept informed

Rolling 12 months data relates to: September 07 - August 08; rolling 3 months data relates to June 08 - August 08
Being kept informed includes burglary, vehicle crime, violent crime and RTCs

Target 60%	Central	Isle of Wight	North & East	Portsmouth	Southampton	Western	Force	No. Surveys
Rolling 12 months	46%	52%	44%	45%	46%	48%	47%	9075
Rolling 3 months	46%	61%	53%	53%	48%	51%	51%	1804

Comparative satisfaction of minority ethnic groups

Data relates to interviews which took place September 07 - August 08
These figures are for overall satisfaction for burglary, vehicle crime, violent crime & RTCs; it excludes racist incidents

	Completely and very satisfied	Completely, very and fairly satisfied
White	61.7%	80.9%
Minority Ethnic	53.3%	74.9%

Satisfaction of victims of racist incidents

These figures relate to interviews which took place March 07 - June 08; these will be updated quarterly
Racist incident overall satisfaction = % completely or very satisfied

	Central	Isle of Wight	North & East	Portsmouth	Southampton	Western	Force
%	46%	60%	75%	66%	47%	79%	60%
Number of surveys	26	10	24	44	55	28	187

British Crime Survey data

This data is updated by iQuanta approximately every quarter.

Data 12 mths to March	Confidence in local police		Understanding community issues		Targets MSG = Most Similar Group	
Avon & Somerset	48.3%		59.4%		Confidence in local police To exceed MSG by 5% whilst maintaining performance	
Bedfordshire	52.2%		63.1%		Understanding community issues To exceed MSG by 3.5% whilst maintaining performance	
Essex	53.5%		59.5%			
Hampshire	57.4%	2nd in MSG	65.5%	2nd in MSG	Perception of drug use To be under MSG whilst maintaining performance	
Hertfordshire	58.2%		67.1%			
Kent	49.8%		59.2%			
Sussex	52.0%		60.6%			
Thames Valley	56.7%		63.0%			
MSG	53.5%		62.2%			

Data 12 mths to March	Perception of anti-social behaviour		Perception of drug use		Perception of drunk or rowdy behaviour	
Avon & Somerset	14.0%		24.0%		26.1%	
Bedfordshire	17.2%		25.1%		21.6%	
Essex	10.3%		17.1%		21.0%	
Hampshire	14.9%	5th in MSG	23.0%	5th in MSG	28.8%	8th in MSG
Hertfordshire	14.5%		22.9%		23.5%	
Kent	15.4%		21.5%		20.7%	
Sussex	13.4%		21.0%		22.2%	
Thames Valley	17.0%		26.0%		26.2%	
MSG	14.6%		22.6%		23.8%	

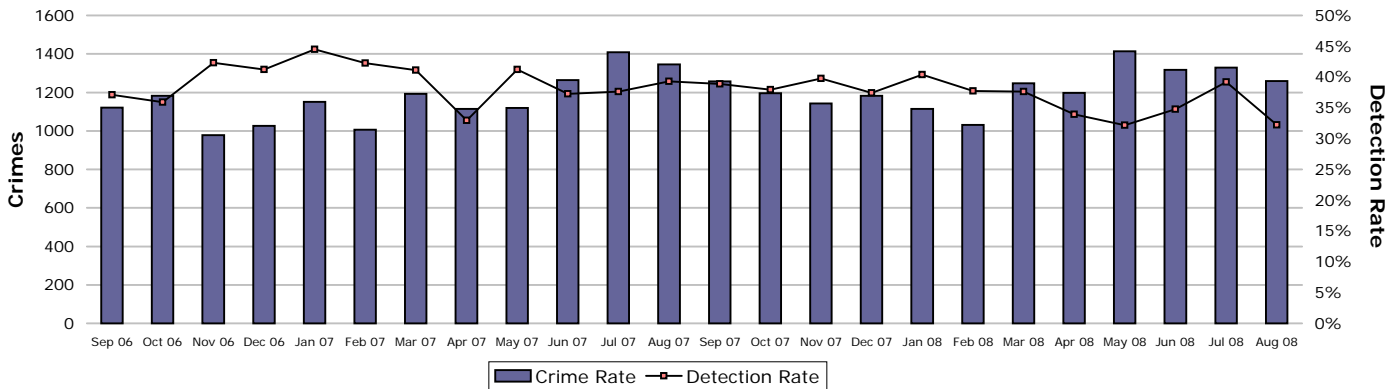
The target for the three areas below is not to decline against previous performance

	Dec 2007	Mar 2008	Jun 2008	Sep 2008	Dec 2008
Confidence in local police	57.4%	57.4%			
Understanding community issues	64.2%	65.5%			
Perception of drug use	23.0%	23.0%			

Safer Neighbourhoods

Assault with less serious injury

Assault with less serious injury consists of crimsec codes 8G and 8J

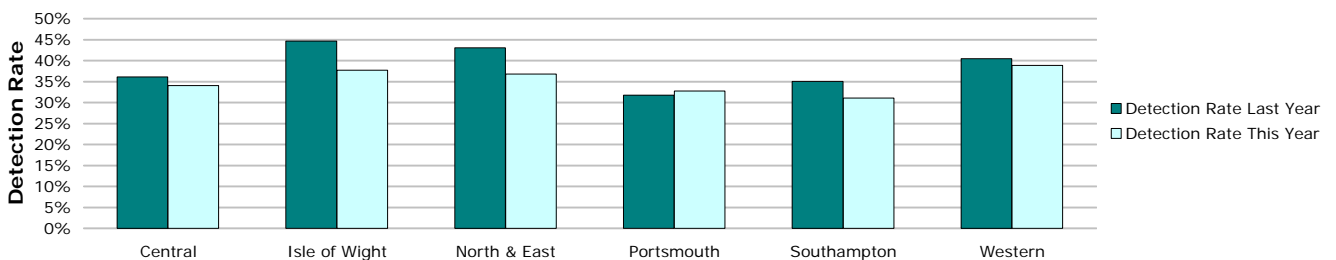


Crimes	Central	Isle of Wight	North & East	Portsmouth	Southampton	Western	Force
YTD Crimes	1293	424	1104	868	1826	1002	6517
YTD Target	1214	390	1011	805	1404	916	5740
YTD 07/08 Crimes	1332	459	1036	919	1473	1033	6252
This month	222	98	210	161	359	209	1259
% change from 07/08	-2.93%	-7.63%	6.56%	-5.55%	23.96%	-3.00%	4.24%
MSG position	15 of 15	10 of 15	14 of 15	4 of 9	15 of 15	8 of 15	8 of 8



Detections	Central	Isle of Wight	North & East	Portsmouth	Southampton	Western	Force
YTD Detection Rate	34.03%	37.74%	36.78%	32.72%	31.05%	38.82%	34.46%
This month	31.98%	37.76%	38.57%	25.47%	28.41%	35.41%	32.25%
YTD 07/08 Detections	36.11%	44.66%	43.05%	31.77%	35.03%	40.46%	37.72%
MSG position	11 of 15	11 of 15	13 of 15	5 of 9	12 of 15	12 of 15	6 of 8

Note: Detections refer to Sanction Detections ONLY



Safer Neighbourhoods

Successful neighbourhood priorities

Data will be available in the September 2008 Performance Summary

Anti-social use of motor vehicle

Data to be provided a month in arrears. It is gathered using Altaris closing codes as the primary data source, then RMS as the secondary data source to gather incidents not recorded within Altaris.

The Force total does not add up to the sum of OCUs, this is due to Altaris incident logs which do not contain a geographic location.

	Central	Isle of Wight	North & East	Portsmouth	Southampton	Western	Force
YTD Apr 08 to Jul 08	1356	365	1119	526	1035	1440	6060
YTD Apr 07 to Jul 07	1519	452	1281	715	1282	1349	6968
July	289	92	287	123	246	308	1393
YTD Target	1230.0	384.4	1095.7	565.2	1025.8	1137.1	5733.7
% v target	10.2%	-5.0%	2.1%	-6.9%	0.9%	26.6%	5.7%
% change from 07/08	-10.7%	-19.2%	-12.6%	-26.4%	-19.3%	6.7%	-13.0%

Anti-social use of motor vehicle - relates to NSIR category Vehicle Nuisance/Inappropriate Use within the Anti-Social Behaviour Grouping

Anti-social behaviour

Data to be provided a month in arrears. It is gathered using Altaris closing codes as the primary data source, then RMS as the secondary data source to gather incidents not recorded within Altaris.

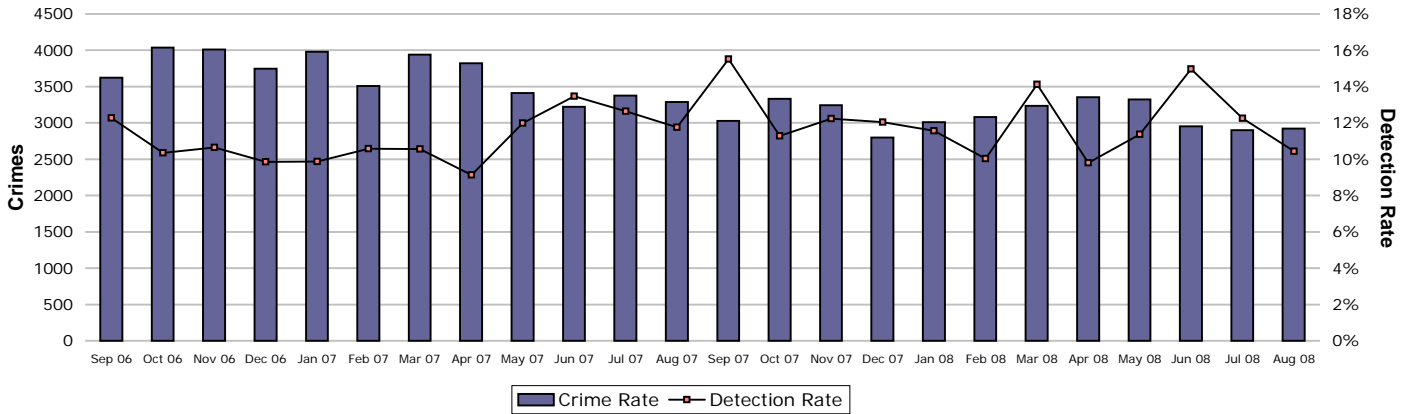
The Force total does not add up to the sum of OCUs, this is due to Altaris incident logs which do not contain a geographic location.

	Central	Isle of Wight	North & East	Portsmouth	Southampton	Western	Force
YTD Apr 08 to Jul 08	7615	2681	6607	5262	7861	5723	36248
YTD Apr 07 to Jul 07	7982	2756	6494	5900	8525	5970	38166
July	1807	645	1576	1363	1941	1416	8880
YTD Target	6698.3	2338.4	5475.0	4991.6	6809.9	5069.2	31895.8
% v target	13.7%	14.7%	20.7%	5.4%	15.4%	12.9%	13.6%
% change from 07/08	-4.6%	-2.7%	1.7%	-10.8%	-7.8%	-4.1%	-5.0%

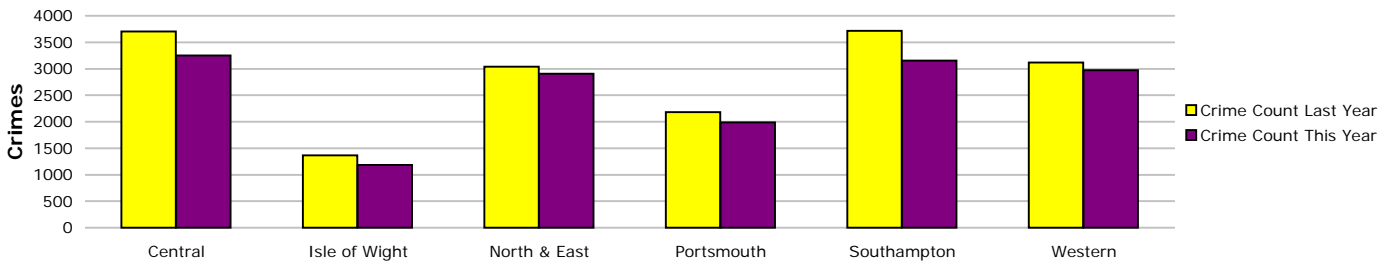
Anti-social behaviour - relates to NSIR categories Environmental Damage/Littering, Rowdy & Inconsiderate and Neighbours within the Anti-Social Behaviour Grouping

Safer Neighbourhoods

Criminal damage

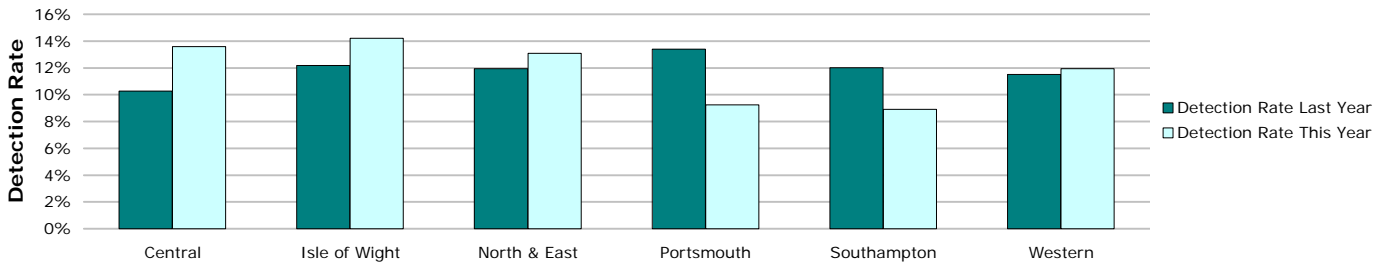


Crimes	Central	Isle of Wight	North & East	Portsmouth	Southampton	Western	Force
YTD Crimes	3248	1183	2905	1990	3153	2975	15454
YTD Target	3137	1126	2585	1787	3062	2655	14352
YTD 07/08 Crimes	3701	1364	3041	2179	3715	3120	17120
This month	579	227	587	344	644	541	2922
% change from 07/08	-12.24%	-13.27%	-4.47%	-8.67%	-15.13%	-4.65%	-9.73%
MSG position	14 of 15	15 of 15	13 of 15	8 of 9	15 of 15	13 of 15	8 of 8



Detections	Central	Isle of Wight	North & East	Portsmouth	Southampton	Western	Force
YTD Detection Rate	13.58%	14.20%	13.08%	9.25%	8.91%	11.93%	11.71%
This month	7.94%	21.59%	11.75%	7.85%	7.92%	11.65%	10.44%
YTD 07/08 Detections	10.27%	12.17%	11.94%	13.40%	12.01%	11.51%	11.72%
MSG position	9 of 15	11 of 15	11 of 15	8 of 9	15 of 15	14 of 15	7 of 8

Note: Detections refer to Sanction Detections ONLY



Safeguard people

Domestic violence incident arrest rate

This target is based on domestic violence incidents and has required work to be undertaken by IT Services to enable the arrest rate to be calculated. This work has been tested and is awaiting implementation. It is hoped data will be available by the September Performance Summary.

Domestic violence victimisation

Placeholder - This measure was a joint APACS and National Indicator Set measure looking at the work of MARACS. This measure was dropped from the 2008/09 APACS guidance, however is expected to be included in the 2009/10 guidance, at which time technical guidance will be published to enable reporting.

Repeat victims of domestic violence

Domestic violence is defined by ACPO as: 'any incidence of threatening behaviour, violence or abuse (psychological, physical, sexual, financial or emotional) between adults, aged 18 and over, who are or have been intimate partners or family members, regardless of gender or sexuality'

Incidents	Central	Isle of Wight	North & East	Portsmouth	Southampton	Western	Force
YTD All Domestic Violence	2003	626	1516	1695	2094	1000	8934
YTD 07/08 All Domestic Violence	1951	582	1267	1652	1888	1187	8527
YTD Repeat Victims	882	261	463	898	649	410	3563
YTD 07/08 Repeat Victims	848	235	434	833	551	393	3294
YTD % Repeat Victims	44.0%	41.7%	30.5%	53.0%	31.0%	41.0%	39.9%
YTD 07/08% Repeat Victims	43.5%	40.4%	34.3%	50.4%	29.2%	33.1%	38.6%

Crimes - Target -5% in repeat victims	Central	Isle of Wight	North & East	Portsmouth	Southampton	Western	Force
YTD All Domestic Violence	877	270	654	531	834	593	3759
YTD 07/08 All Domestic Violence	905	274	610	588	739	581	3697
YTD Repeat Victims	207	59	159	153	241	132	951
YTD 07/08 Repeat Victims	245	54	112	176	167	97	851
YTD % Repeat Victims	23.6%	21.9%	24.3%	28.8%	28.9%	22.3%	25.3%
YTD 07/08% Repeat Victims	27.1%	19.7%	18.4%	29.9%	22.6%	16.7%	23.0%
% change in repeat victims from 07/08	-3.1%	-1.5%	7.2%	-9.7%	12.9%	2.1%	1.7%

Note: Crimes are a subset of the incident data. This data reflects ALL crime types, and is not restricted to 'violent' offences

Crimes - This month	Central	Isle of Wight	North & East	Portsmouth	Southampton	Western	Force
This month All Domestic Violence	158	63	144	101	175	147	788
This month Repeat Victims	40	18	35	31	56	36	216
This month % Repeat Victims	25.3%	28.6%	24.3%	30.7%	32.0%	24.5%	27.4%

Domestic violence OBTJ rate

The Office for Criminal Justice Reform is working on the breakdown as required within this Summary which will be available shortly. The Tier 3 "other offences" measure includes the domestic violence OBTJ rate which currently cannot be individually extracted. The table below shows the percentage of persons brought to justice for "other offences" which includes domestic violence (DV) incidents against the total number of DV incidents.

OBTJ Crime category	OBTJ Rate			
	April 08	May 08	June 08	Rolling average
Tier 3: Other Offences	30%	24%	26%	28%

Hate crime detection rate

Hate Crime includes all crimes flagged within RMS with a Hate Crime indicator excluding those flagged purely as Police or Domestic.

Target >45%

Year to Date	Central	Isle of Wight	North & East	Portsmouth	Southampton	Western	Force
Incidents	264	67	240	255	398	184	1408
Crimes	120	55	139	169	263	145	891
Detections	41	22	41	47	107	49	307
Detection Rate	34.17%	40.00%	29.50%	27.81%	40.68%	33.79%	34.46%

Month	Central	Isle of Wight	North & East	Portsmouth	Southampton	Western	Force
Incidents	24	5	25	45	70	30	199
Crimes	15	5	20	35	42	22	139
Detections	5	6	4	9	17	10	51
Detection Rate	33.33%	120.00%	20.00%	25.71%	40.48%	45.45%	36.69%

Sexual offender reoffending rate

This indicator was contained within the draft APACS/National Indicator Set measures, however following national consultation this was removed from both sets. Hampshire has not yet identified how this target will be measured in the absence of technical guidance.

Protect our communities

Number of Rainbow visits

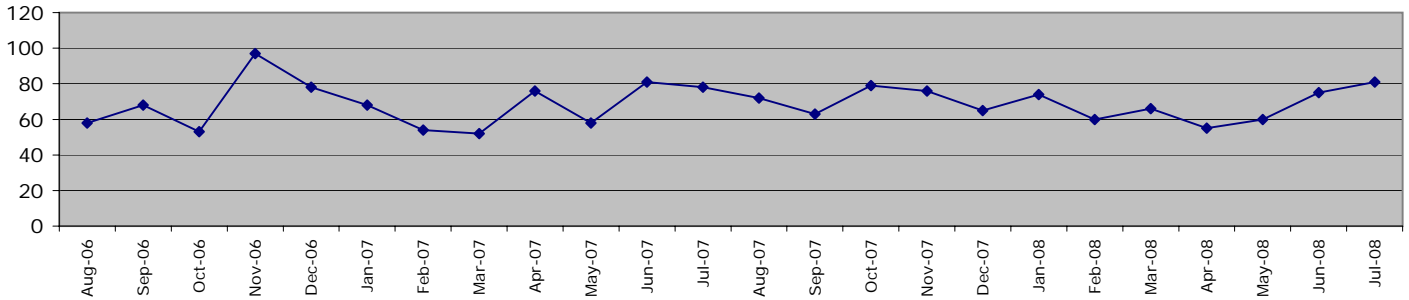
Work is currently being piloted by SO Portfolio using a limited amount of vehicles with INCA capability. Performance Indicators focus around time spent at the Rainbow sites. A sparse amount of information is available but is not indicative and therefore will not be published.

Dangerous sites assessed as green

Guidance has recently been received in relation to this Key Diagnostic Indicator. Work is currently underway to establish how this data will be collected and to establish a baseline and target information.

Road traffic casualties

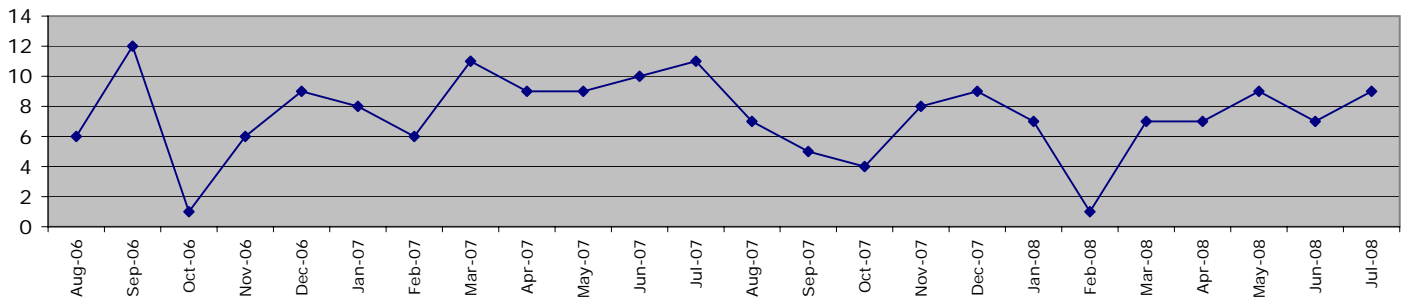
Fatal/serious injury casualties - all victims



The Force target 2008/2009 is for less than 938 casualties, which equates to less than 314 in 122 days YTD July 2008 = 271 casualties

	Central	Isle of Wight	North&East	Portsmouth	Southampton	Western	Force
1 April 2008 - 31 July 2008	51	30	56	31	35	68	271
of these, fatalities were	5	3	2	2	1	7	20
1 April 2007 - 31 July 2007	75	25	70	23	18	82	293

Fatal/serious injury casualties - victims under 16 years



The DETR target is for a 50% reduction in child casualties by 2010 from 164 to 82 (Target 2008/2009 = 94)

	Central	Isle of Wight	North&East	Portsmouth	Southampton	Western	Force
1 April 2008 - 31 July 2008	6	6	6	4	6	4	32
of these, fatalities were	0	0	0	0	0	0	0
1 April 2007 - 31 July 2007	10	2	7	8	3	9	39

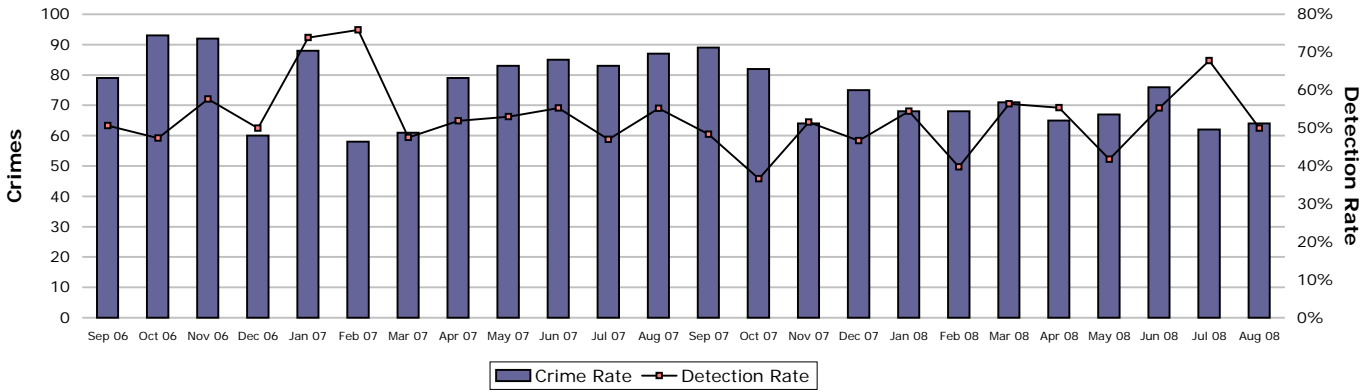
NOTE: YTD numbers may change as the accident record data are updated each month

NOTE: The casualties in East Hampshire have all been attributed to North & East OCU in the absence of a breakdown by OCUs

Prevent, reduce and detect crime

Serious violent crime

Serious violent crime consists of crimsec codes 1, 2, 4.1-4.4, 4.6, 4.8, 5A, 5B, 5C, 8F, 8H and 37.1



Crimes	Central	Isle of Wight	North & East	Portsmouth	Southampton	Western	Force
YTD Crimes	88	28	49	49	88	32	334
YTD Target	64	34	62	71	104	33	368
YTD 07/08 Crimes	78	30	73	83	114	39	417
This month	9	3	10	7	25	10	64
% change from 07/08	12.82%	-6.67%	-32.88%	-40.96%	-22.81%	-17.95%	-19.90%
MSG position	11 of 15	9 of 15	4 of 15	2 of 9	8 of 15	1 of 15	3 of 8



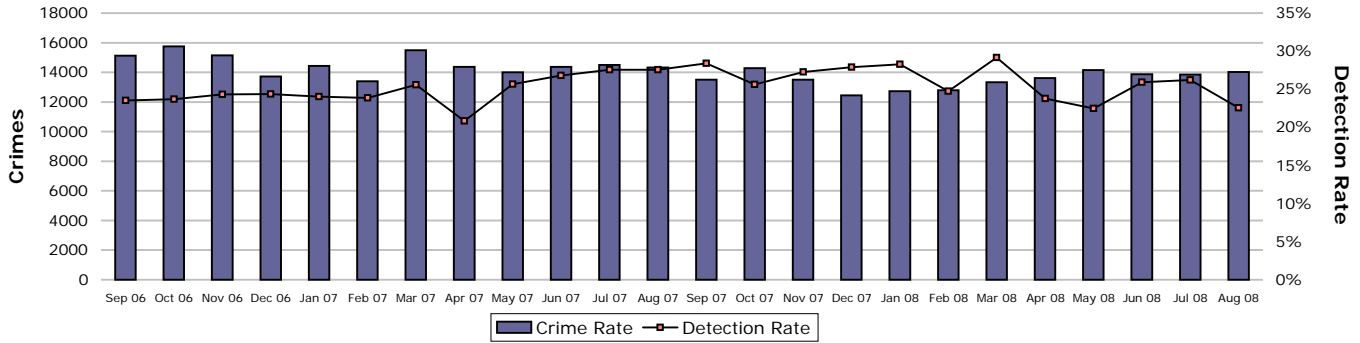
Detections	Central	Isle of Wight	North & East	Portsmouth	Southampton	Western	Force
Target >50%							
YTD Detection Rate	51.14%	78.57%	63.27%	55.10%	45.45%	46.88%	53.89%
This month	66.67%	33.33%	70.00%	71.43%	32.00%	50.00%	50.00%
YTD 07/08 Detections	69.23%	26.67%	63.01%	43.37%	51.75%	41.03%	52.52%
MSG position	5 of 15	1 of 15	3 of 15	3 of 9	4 of 15	4 of 15	2 of 8

Note: Detections refer to Sanction Detections ONLY

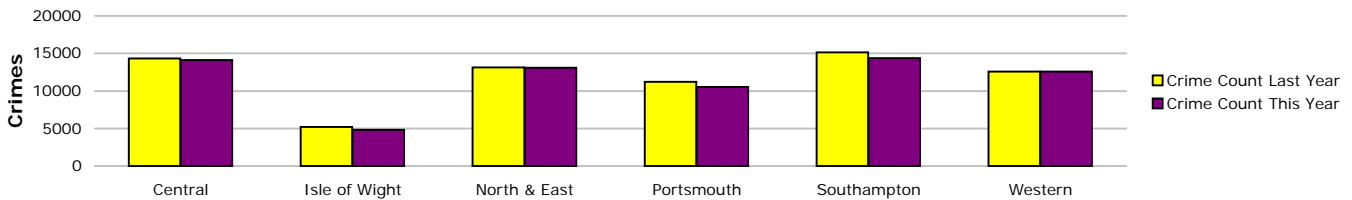


Prevent, reduce and detect crime

All crime

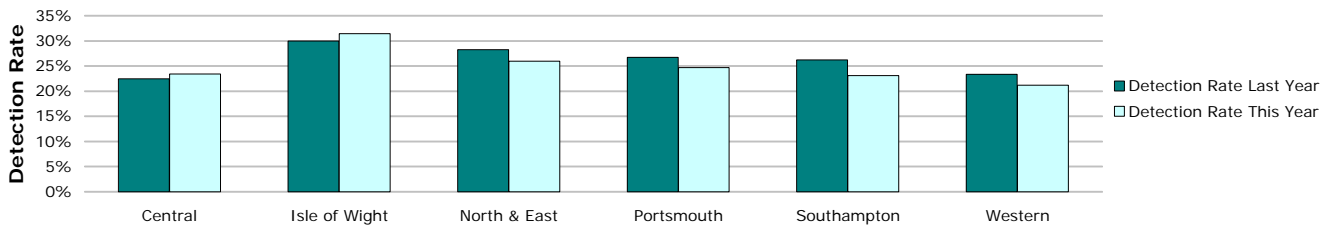


Crimes	Central	Isle of Wight	North & East	Portsmouth	Southampton	Western	Force
YTD Crimes	14136	4836	13073	10536	14356	12576	69513
YTD Target	13717	4637	12595	10388	14174	11555	67065
YTD 07/08 Crimes	14316	5203	13135	11197	15129	12572	71552
This month	2810	900	2839	1990	2845	2630	14014
% change from 07/08	-1.26%	-7.05%	-0.47%	-5.90%	-5.11%	0.03%	-2.85%
MSG position	12 of 15	12 of 15	8 of 15	7 of 9	13 of 15	8 of 15	6 of 8



Detections	Central	Isle of Wight	North & East	Portsmouth	Southampton	Western	Force
Target >25%							
YTD Detection Rate	23.39%	31.41%	25.97%	24.72%	23.12%	21.22%	24.19%
This month	20.25%	33.67%	26.21%	22.36%	21.05%	19.01%	22.55%
YTD 07/08 Detections	22.47%	29.94%	28.28%	26.74%	26.21%	23.35%	25.69%
MSG position	10 of 15	7 of 15	9 of 15	3 of 9	11 of 15	15 of 15	6 of 8

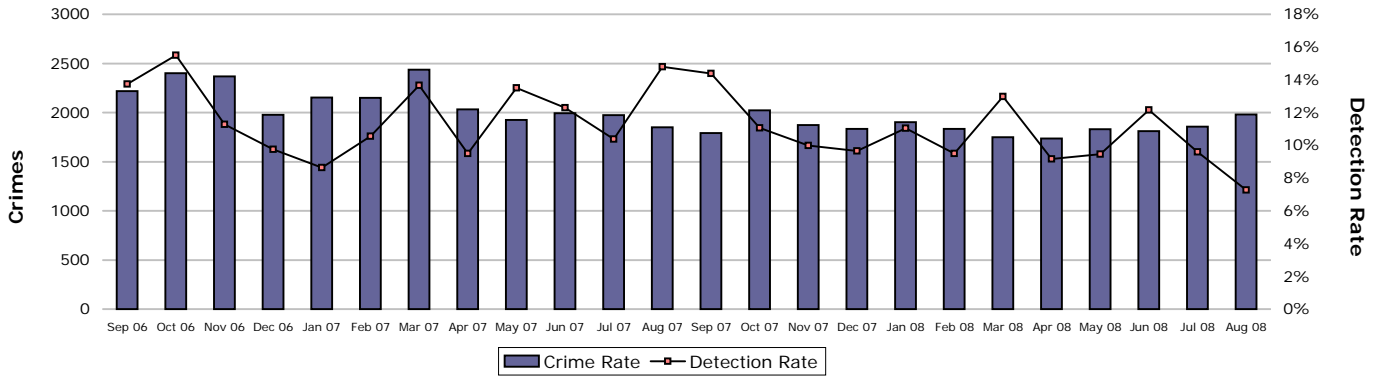
Note: Detections refer to Sanction Detections ONLY



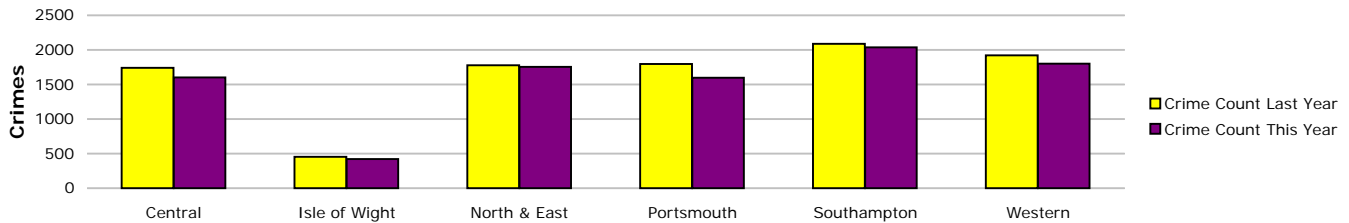
Prevent, reduce and detect crime

Serious acquisitive crime

Serious acquisitive crime consists of crimsec codes 28, 29, 34A, 34B, 37/2, 45 and 48

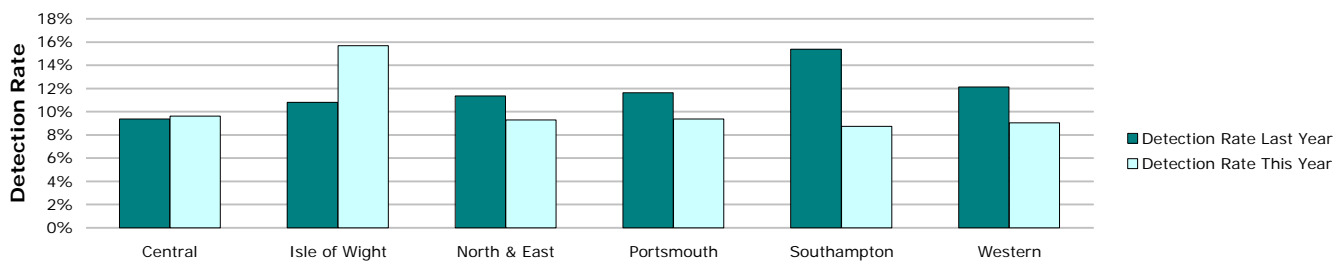


Crimes	Central	Isle of Wight	North & East	Portsmouth	Southampton	Western	Force
YTD Crimes	1600	421	1756	1599	2036	1803	9215
YTD Target	1660	398	1834	1538	2086	1863	9380
YTD 07/08 Crimes	1740	453	1779	1798	2086	1919	9775
This month	359	74	422	357	377	393	1982
% change from 07/08	-8.05%	-7.06%	-1.29%	-11.07%	-2.40%	-6.04%	-5.73%
MSG position	3 of 15	4 of 15	5 of 15	3 of 9	8 of 15	9 of 15	2 of 8



Detections	Central	Isle of Wight	North & East	Portsmouth	Southampton	Western	Force
Target >15%							
YTD Detection Rate	9.63%	15.68%	9.28%	9.38%	8.74%	9.04%	9.48%
This month	4.46%	29.73%	11.14%	4.76%	6.10%	4.83%	7.27%
YTD 07/08 Detections	9.37%	10.82%	11.35%	11.62%	15.39%	12.14%	12.04%
MSG position	10 of 15	6 of 15	14 of 15	3 of 9	7 of 15	9 of 15	6 of 8

Note: Detections refer to Sanction Detections ONLY



Prevent, reduce and detect crime

Gun crime rate

	Central	Isle of Wight	North & East	Portsmouth	Southampton	Western	Force
YTD August 2008	22	1	8	12	8	13	64
YTD August 2007	23	6	8	14	7	10	68
% change from 07/08	-4.3%	-83.3%	0.0%	-14.3%	14.3%	30.0%	-5.9%

Gun crime figures published reflect the APACS technical definition for 2008/09 which differs from that used in 2007/08. Manual checking has been undertaken to try to provide comparative 2007/08 figures, however it is not possible to provide completed comparable figures. In 2008/09 gun crime includes "where the victim is convinced of the presence of a firearm, even if it is concealed and there is evidence of the suspect's intention to create this impression"; these occurrences were not included in previously published 2007/08 data.

Knife crime rate

	Central	Isle of Wight	North & East	Portsmouth	Southampton	Western	Force
YTD August 2008	64	16	62	60	96	52	350
YTD August 2007	65	21	59	84	90	46	365
% change from 07/08	-1.5%	-23.8%	5.1%	-28.6%	6.7%	13.0%	-4.1%

Knife = knife or other sharp instrument (including broken glass/bottles) piercing the skin or, for threats and attempts, instruments normally capable of piercing the skin

Knife crime figures published reflect the APACS technical definition for 2008/09 which differs from that used in 2007/08. Manual checking has been undertaken to try to provide comparative 2007/08 figures, however it is not possible to provide completed comparable figures. In 2008/09 knife crime includes "where the victim is convinced of the presence of a knife, even if it is concealed and there is evidence of the suspect's intention to create this impression"; these occurrences were not included in previously published 2007/08 data.

Serious sexual crime OBTJ rate

The table below shows the percentage of persons brought to justice for serious sexual crimes against the total number of serious sexual crimes

OBTJ Crime category	OBTJ Rate			
	April 08	May 08	June 08	Rolling average
Tier 1: Serious Sexual Offences	24%	9%	33%	19%

Murder offences

2008/2009 target = < 16 murder offences

	Central	Isle of Wight	North & East	Portsmouth	Southampton	Western	Force
YTD August 2008	0	0	1	0	0	0	1
YTD August 2007	3	0	2	1	1	1	8
% change from 07/08							-87.5%

For more information, please go to the Specialist Operations - 7 OCU page

Asset recovery

Asset recovery is the sum total of the values of cash forfeitures and confiscation orders

	Central	Isle of Wight	North & East	Portsmouth	Southampton	Western	Force
April 2008	£38,187.90	£0.00	£18,413.50	£0.00	£0.00	£0.00	£56,601.40
May 2008	£0.00	£0.00	£0.00	£0.00	£69,735.00	£0.00	£69,735.00
June 2008	£76,739.37	£0.00	£140,060.50	£0.00	£8,676.00	£4,693.00	£230,168.87
July 2008	£0.00	£0.00	£0.00	£1,104.00	£2,035.00	£2,100.00	£5,239.00
August 2008	£0.00	£0.00	£22,699.60	£0.00	£15,469.55	-£19,520.00	£18,649.15
Cumulative total	£114,927.27	£0.00	£181,173.60	£1,104.00	£95,915.55	-£12,727.00	£380,393.42

Prolific and other Priority Offenders (PPOs) convictions

Number of convictions recorded against identified, prolific and other priority offenders

Convictions	July 08
Persistent Young Offenders	224
Priority Prolific Offenders	29
Persistent Priority Prolific Young Offenders	1
Young Offenders	312

Class A drugs sanction detections

	Central	Isle of Wight	North & East	Portsmouth	Southampton	Western	YTD August 2008 target			168
							Crime	Operations	No OIC	Force
YTD August 2008	6	18	28	13	26	6	30	1	5	133
YTD August 2007	18	11	30	16	14	4	7	3	3	106

Drug Intervention Measures (DIMs)

	Central	Isle of Wight	North & East	Portsmouth	Southampton	Western	Crime	Force
YTD July 2008	27	0	13	46	31	10	0	127
YTD July 2007	0	6	10	0	0	3	0	19
% change from 07/08	0.0%	0.0%	130.0%	0.0%	0.0%	333.3%	0.0%	668.4%

Note: Drug Intervention Measure data is currently provided one month in arrears

Note: The large variance between YTD 2007 and YTD 2008 is partially due to changes in the process for submissions up until Sept 07

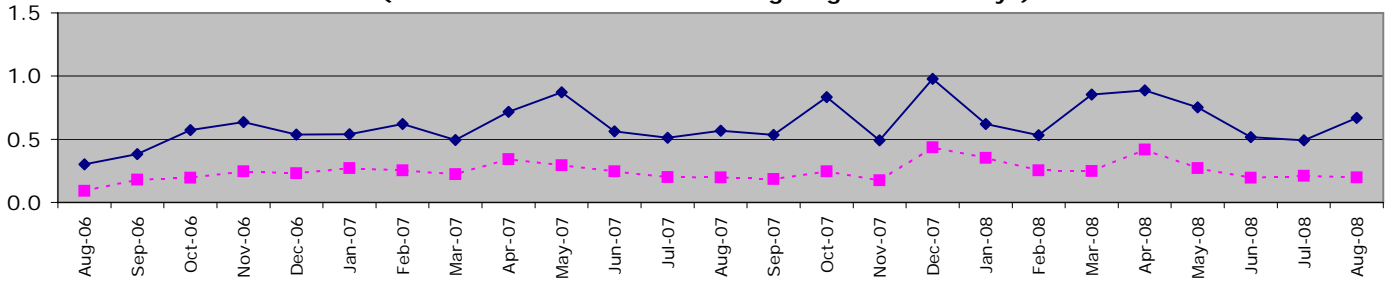
Organisational management

All Police officer sickness YTD = **3.32**

All Police officer sickness August **0.67**

Police officers in OCUs

**Sickness and injury absence days per officer by month
(broken line shows data excluding long-term sick days)**

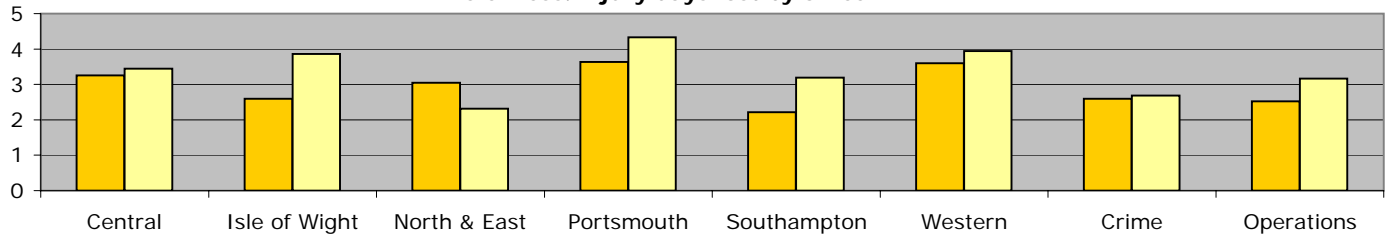


Force target for 08/09 = 7.5 days or fewer per officer (3.125 for 5 months) **YTD = 3.32 days lost per officer**

	Central	Isle of Wight	North & East	Portsmouth	Southampton	Western	Crime	Operations	OCU Totals
YTD Apr 08 - August 08	3.44	3.86	2.31	4.33	3.19	3.94	2.69	3.16	3.32
YTD Apr 07 - August 07	3.25	2.60	3.05	3.63	2.21	3.60	2.59	2.52	2.97
This month	0.73	0.95	0.63	0.83	0.59	0.69	0.50	0.56	0.67
% change	5.9%	48.5%	-24.2%	19.3%	44.3%	9.6%	3.8%	25.6%	11.7%

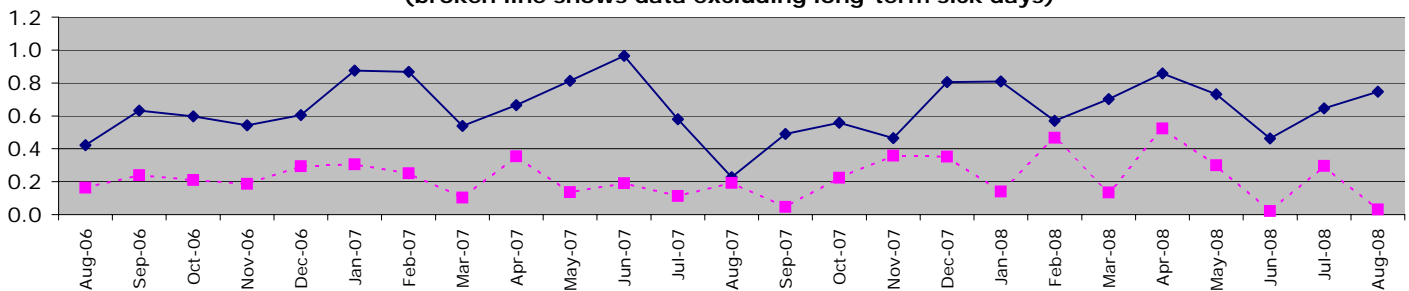
"Operations" includes SO Portfolio and Projects Staff

Sickness/injury days lost by officer YTD



Police officers not in OCUs

**Sickness and injury absence days per police officer by month
(broken line shows data excluding long-term sick days)**

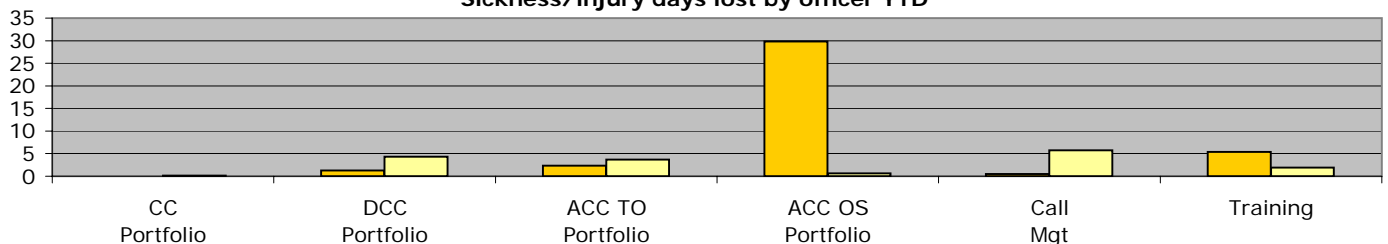


Force target for 08/09 = 7.5 days or fewer per officer (3.125 for 5 months) **YTD = 3.45 days lost per officer**

	CC Portfolio	DCC Portfolio	ACC TO Portfolio	ACC OS Portfolio	DoF Portfolio	Call Mgt	Training	Non-OCU Totals
YTD Apr 08 - August 08	0.17	4.35	3.70	0.63	N/A	5.74	1.91	3.45
YTD Apr 07 - August 07	0.00	1.29	2.31	29.83	N/A	0.51	5.35	3.35
This month	0.00	0.84	0.83	0.00	N/A	0.11	1.19	0.75
% change	N/A	238.3%	59.9%	-97.9%	N/A	1036.6%	-64.2%	2.8%

ACC OS Portfolio excludes Call Mgt & Training figures which are reported on separately. No police officers work within DoF Portfolio.

Sickness/injury days lost by officer YTD



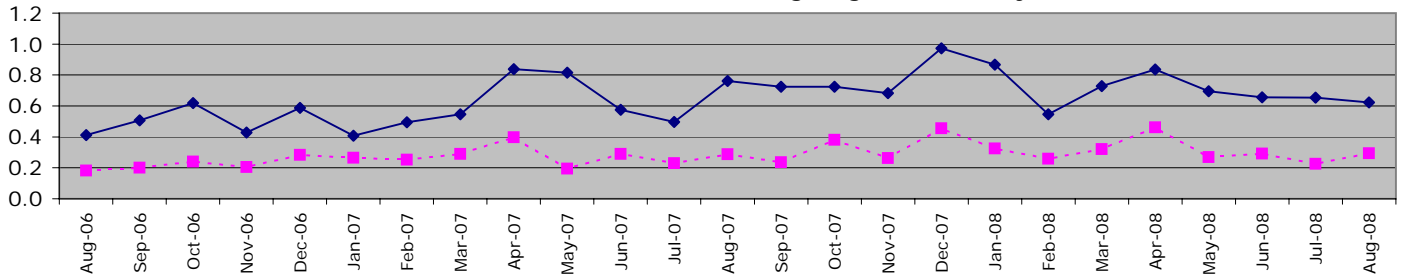
Organisational management

All Police staff sickness YTD = **3.40**

All Police staff sickness August = **0.64**

Police staff in OCUs

**Sickness and injury absence days per police staff member by month
(broken line shows data excluding long-term sick days)**

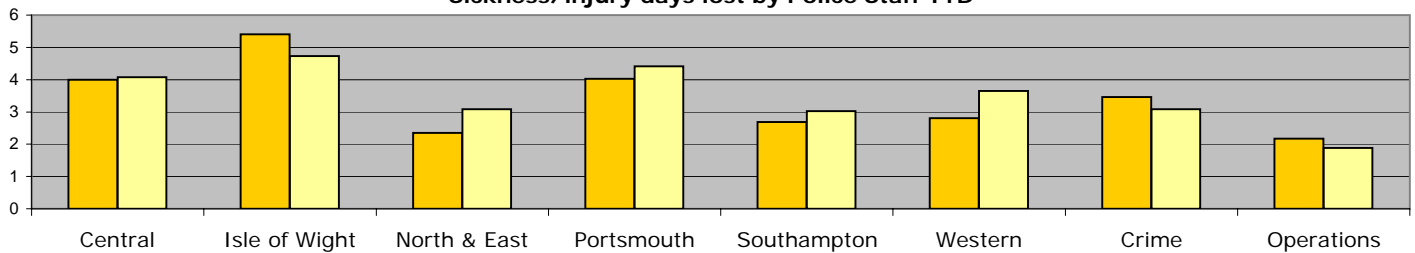


Force target for 08/09 = 7.5 days or fewer per staff (3.125 for 5 months) **YTD = 3.46 days lost per staff member**

	Central	Isle of Wight	North & East	Portsmouth	Southampton	Western	Crime	Operations	OCU Totals
YTD Apr 08 - August 08	4.08	4.73	3.09	4.42	3.02	3.65	3.09	1.88	3.46
YTD Apr 07 - August 07	4.00	5.41	2.35	4.03	2.69	2.81	3.47	2.18	3.29
This month	1.03	0.87	0.64	0.61	0.30	0.44	0.76	0.25	0.62
% change	2.1%	-12.6%	31.5%	9.7%	12.4%	29.9%	-10.9%	-13.5%	53.4%

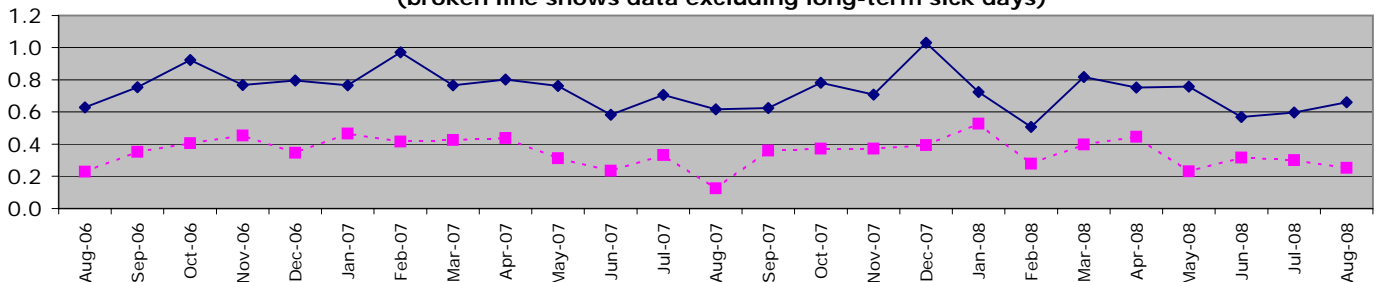
"Operations" includes SO Portfolio and Projects Staff

Sickness/injury days lost by Police Staff YTD



Police staff not in OCUs

**Sickness and injury absence days per police staff member by month
(broken line shows data excluding long-term sick days)**

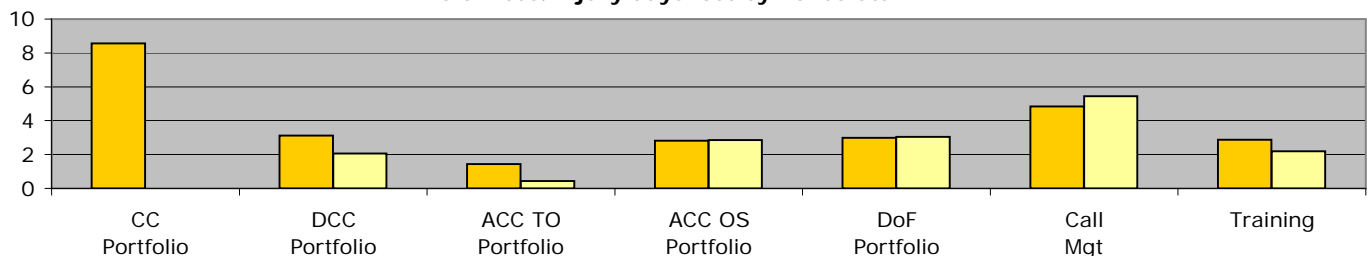


Force target for 08/09 = 7.5 days or fewer per staff (3.125 for 5 months) **YTD = 3.34 days lost per staff member**

	CC Portfolio	DCC Portfolio	ACC TO Portfolio	ACC OS Portfolio	DoF Portfolio	Call Mgt	Training	Non-OCU Totals
YTD Apr 08 - August 08	0.00	2.05	0.43	2.86	3.04	5.45	2.19	3.34
YTD Apr 07 - August 07	8.57	3.11	1.43	2.81	2.99	4.84	2.88	3.51
This month	0.00	0.32	0.13	0.75	0.65	1.00	0.18	0.66
% change	-100.0%	-34.1%	-69.6%	1.8%	1.8%	12.6%	-24.0%	-4.9%

ACC OS Portfolio excludes Call Mgt & Training figures which are reported on separately.

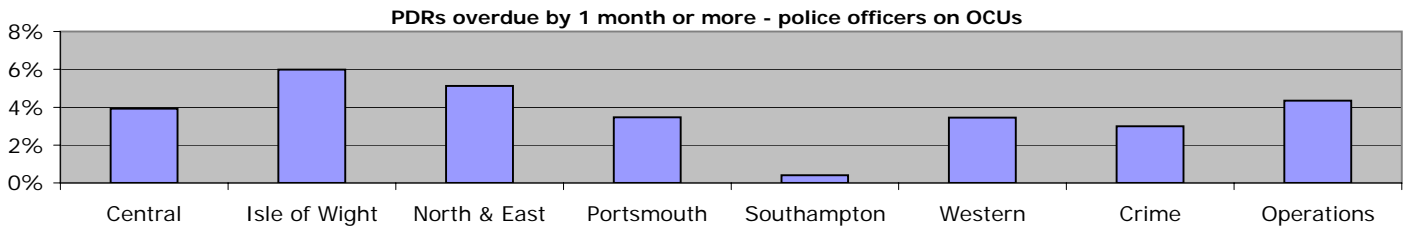
Sickness/injury days lost by Police Staff YTD



Organisational management

Overdue PDRs

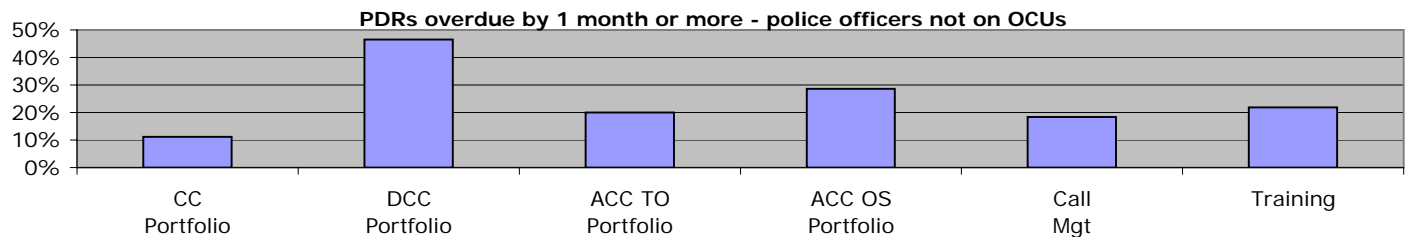
Police officer PDRs - police officers in OCUs



August 2008	Central	Isle of Wight	North & East	Portsmouth	Southampton	Western	Crime	Operations
Population	638	217	565	432	493	522	435	414
Overdue	25	13	29	15	2	18	13	18
% overdue	3.9%	6.0%	5.1%	3.5%	0.4%	3.4%	3.0%	4.3%

"Operations" includes SO Portfolio and Projects Staff

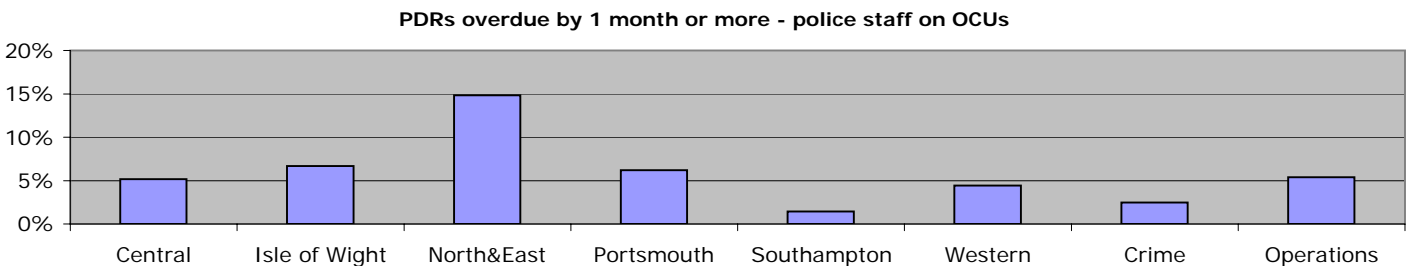
Police officer PDRs - police officers not on OCUs



August 2008	CC Portfolio	DCC Portfolio	ACC TO Portfolio	ACC OS Portfolio	DoF Portfolio	Call Mgt	Training
Population	9	43	35	7	N/A	38	64
Overdue	1	20	7	2	N/A	7	14
% overdue	11.1%	46.5%	20.0%	28.6%	N/A	18.4%	21.9%

ACC OS Portfolio excludes Call Mgt & Training figures which are reported on separately. No police officers work within DoF Portfolio

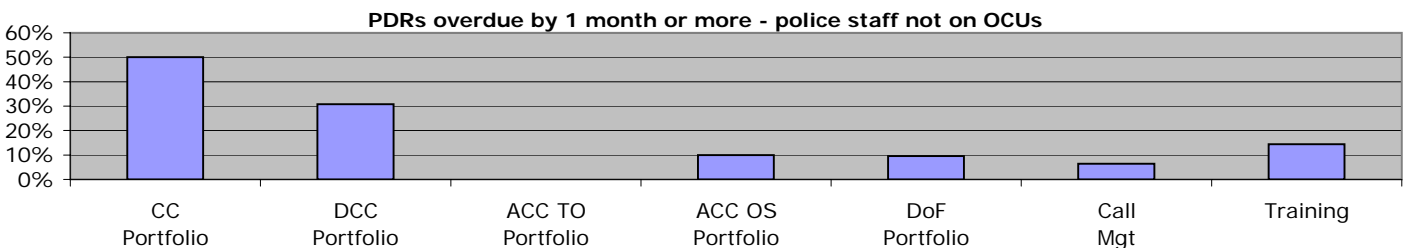
Police staff PDRs - police staff in OCUs



August 2008	Central	Isle of Wight	North&East	Portsmouth	Southampton	Western	Crime	Operations
Population	232	105	202	193	211	204	285	148
Overdue	12	7	30	12	3	9	7	8
% overdue	5.2%	6.7%	14.9%	6.2%	1.4%	4.4%	2.5%	5.4%

"Operations" includes SO Portfolio and Projects Staff

Police staff PDRs - police staff not in OCUs



August 2008	CC Portfolio	DCC Portfolio	ACC TO Portfolio	ACC OS Portfolio	DoF Portfolio	Call Mgt	Training
Population	2	331	38	443	146	419	97
Overdue	1	102	0	44	14	27	14
% overdue	50.0%	30.8%	0.0%	9.9%	9.6%	6.4%	14.4%

ACC OS Portfolio excludes Call Mgt & Training figures which are reported on separately

Organisational management

Minority Ethnic Officer Recruitment

	All recruits	Minority ethnic recruits	%
YTD August 2008	51	1	2%

Female Officer Representation

	Male strength	Female strength	%
YTD August 2008	2823.4	1024.6	26.6%

NCRS compliance

	Central	Isle of Wight	North & East	Portsmouth	Southampton	Western	Crime
NCRS audits	Fair 82%	Fair 82%	Fair 84%	Poor 72%	Poor 64%	Fair 85%	No data

Note: NCRS audit data relates to a rolling 12 mth period

Self-Inspection	91.0%	85.0%	80.0%	66.0%	81.0%	90.0%	No data

Note: Self-Inspections - only appealed records are moderated by the Force Crime Registrar

Budget spend

The actual spend to the end of July 2008 was £94.6m. This gives a projected spend for the force at the end of the financial year of £299.6m, which will be an overspend of £4.65m against the agreed budget.

The force is taking measures to eliminate this overspend during the course of the current financial year.

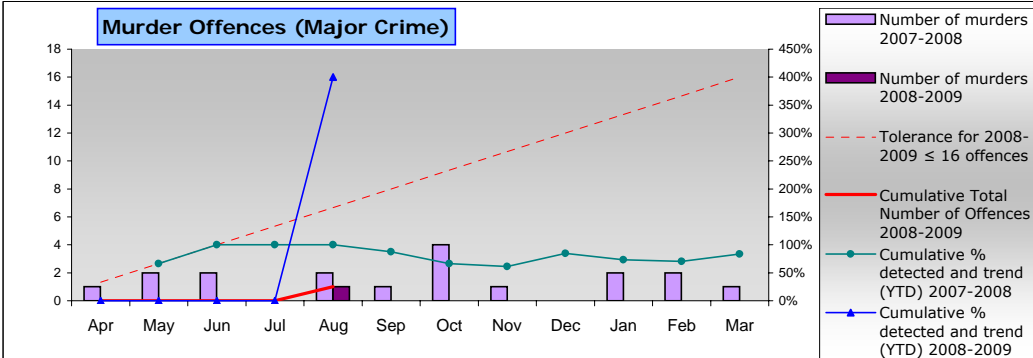
	Central	Isle of Wight	North & East	Portsmouth	Southampton	Western	Crime	Operations
Projected overspend 2008/2009	£307,000	-£119,000	£495,000	£1,196,000	£173,000	£310,000	£295,000	£450,000

Efficiency savings

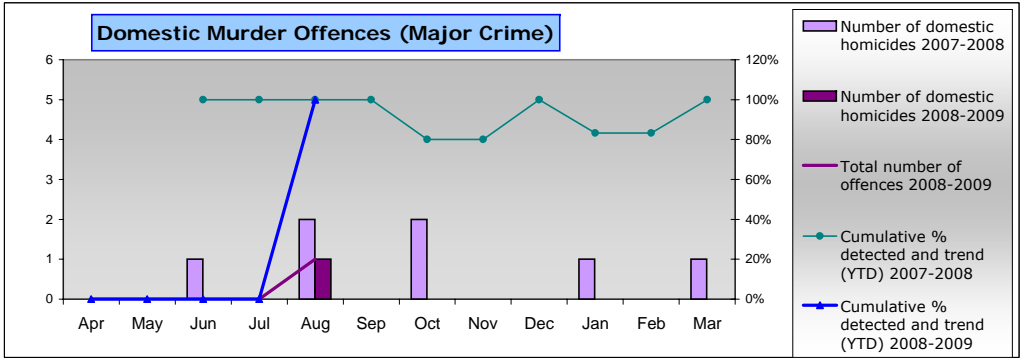
The Authority needs to maximise efficiency gains both due to its budgetary constraints and in order to achieve value for money. In addition, there is a Home Office target to deliver recurring efficiency or productivity gains equivalent to 9.3% (some £30m) of the Authority's 2008/09 'Gross Revenue Expenditure' by the end of 2010/11. The Authority and Force are working to achieve, and if possible exceed, the target through initiatives identified and monitored by the Efficiency Strategy Group.

An efficiency saving register that is used as a tracking tool is now monitoring progress of ongoing efficiency initiatives valued at £16.06m across the current and future financial years. Some of the initiatives listed are not in a position yet to quantify the potential efficiency savings deliverable. It will be seen that there are also a number of initiatives listed on the register which are only at the start up stage of the project life cycle and are unlikely to deliver productivity gains within the required timeframe: they are nonetheless important as efficiency is an ongoing long term requirement.

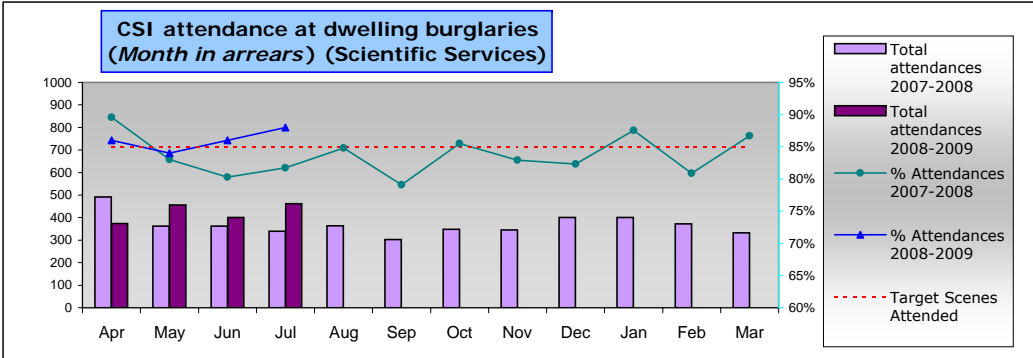
Specialist Operations - 7 OCU



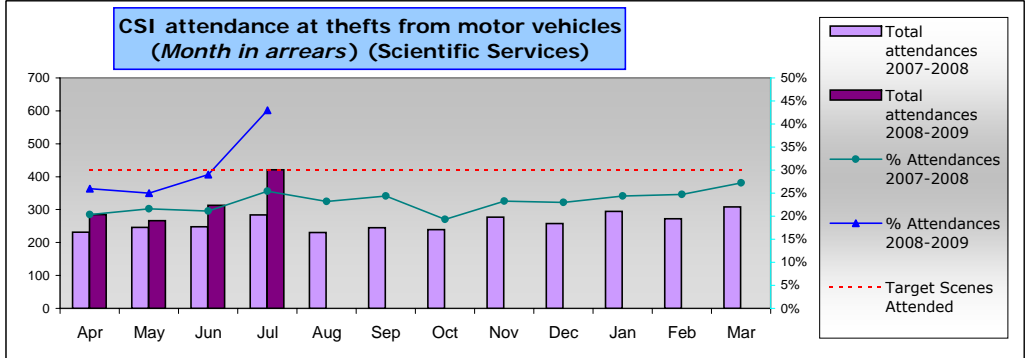
All murder offences this year compared to last year and detection rates
 The target is no more than 16 offences for the current year
 Detection target for murder is 100%



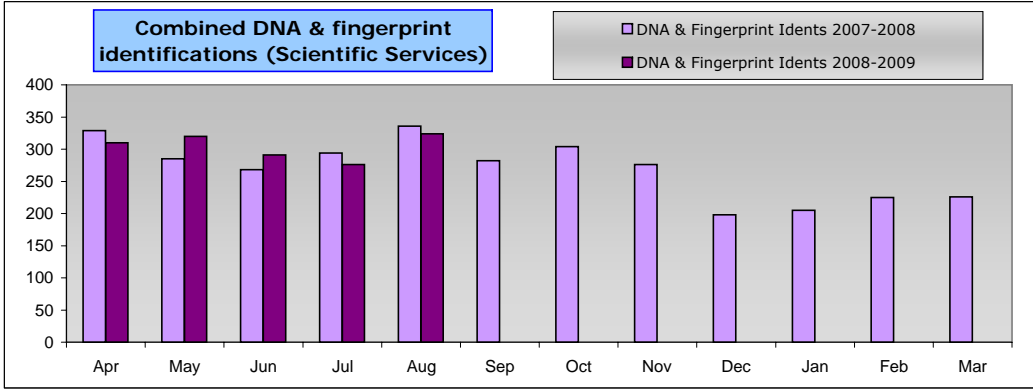
Domestic murder offences this year compared to last year and detection rates
 Detection target for murder is 100%



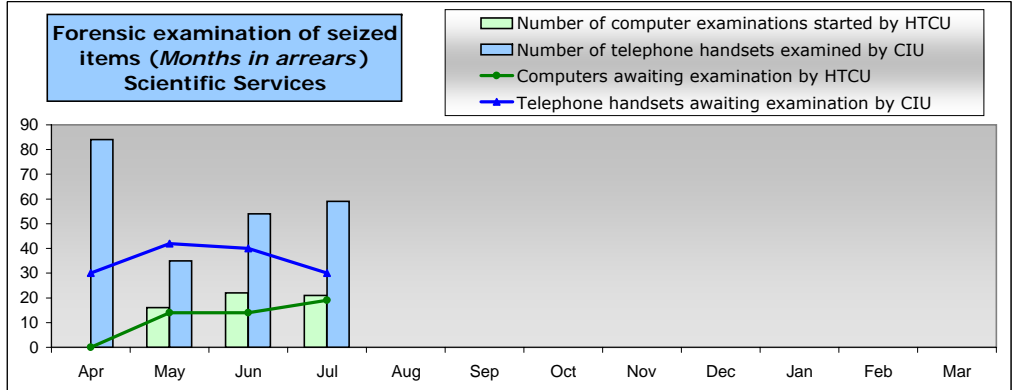
Burglary dwelling scene attendance rates. Target is no less than 85%



Theft from motor vehicle scene attendance rates. Target is no less than 30%



Combined DNA & fingerprint identifications this year compared to last year



Number of computer examinations started by HTCUCI
 Number of computers awaiting examination by HTCUCI
 Number of telephone handsets examined by CIU
 Number of telephone handsets awaiting examination by CIU

Specialist Operations - 8 OCU

Operational Availability				
	Current	YTD 07	Current	YTD 08
ASU	99%	97%	100%	99%
CT&DE	Not previously recorded		100%	89%
DSU	84%	86%	85%	82%
FSU	92%	92%	91%	89%
MSU	90%	88%	100%	92%
OPPU	95%		100%	96%
TFT	82%	77%	82%	85%
ARV	Not previously recorded		98%	92%
RPU	Not previously recorded		Not currently recorded	
Total	88%	85%	91%	88%

Pre-Planned Operations YTD**								
Op. Name	OCU Supported							Total
	1	2	3	4	5	6	Other	
Radon	0	0	0	0	0	0	0	0
Advasar	0	1	0	0	0	0	0	1
Cabot	0	0	0	0	0	0	0	0
Cowes Wee	0	4	0	0	0	0	0	4
Viper	0	3	0	0	0	0	0	3
Hartbourne	0	0	0	2	0	0	0	2
Handsworth	0	0	0	0	4	0	0	4
Empire	0	0	0	0	0	2	0	2
Gilcrest	0	0	0	0	0	1	0	1
Other	11	12	19	15	20	25	5	107
Total	11	20	19	17	24	28	5	124
Arrests	2	0	0	8	4	1	0	15
FPNs	4	1	0	0	8	47	0	60
Seizures	1	1	0	0	1	3	0	6
Other	5	16	0	41	29	26	10	127
Total	12	18	0	49	42	77	10	208

ANPR Operations YTD**								
	OCU Supported							Total
	1	2	3	4	5	6	Other	
No. of Ops	8	1	7	1	6	5	0	28
Arrests	0	0	1	0	0	0	0	1
FPNs	42	4	4	10	3	7	0	70
Seizures	7	0	3	0	6	0	0	16
Other	10	0	16	3	16	34	0	79
Total	59	4	24	13	25	41	0	166

Interventions in support of OCUs and Force Strategy YTD								
	Arrests	CT Activity		FPNs		C12*	S44*	S165
		No. of visits	Hours	E1	Other			
ASU	1	Data is not yet available in a useable format however this is in the process of being rectified to enable future reporting.			1			
CT&DE	0				0	0	0	
DSU	166				48	366	21	
FSU	244				5	13	560	113
MSU	11					4	13	7
OPPU	1					2	1	0
TFT	112					59	441	24
ARV	610				8	931	1089	338
RPU	986				4	8473	3183	106
Total	2131				17	9531	5653	609

* C12 & S44 data is only up to 28/07/08 as no further data has been provided by Corporate Services.

**Operations data does not include figures from RPU Northern and DSU.

Operational Services

Issues of the month: Measuring **conditional cautions** since April 2008, we can see variation across the OCU's in the use of this disposal. Rates of attrition in **domestic violence** cases fell this month. However the rates are above those the CPS are targeted with. Within **Call Management**, the August service level was the highest achieved for the last 4 months at 89.06% against a target of 90%. August also saw an increase of 8% in call volumes compared to July & 15% compared to April, which was when the target was last achieved.

