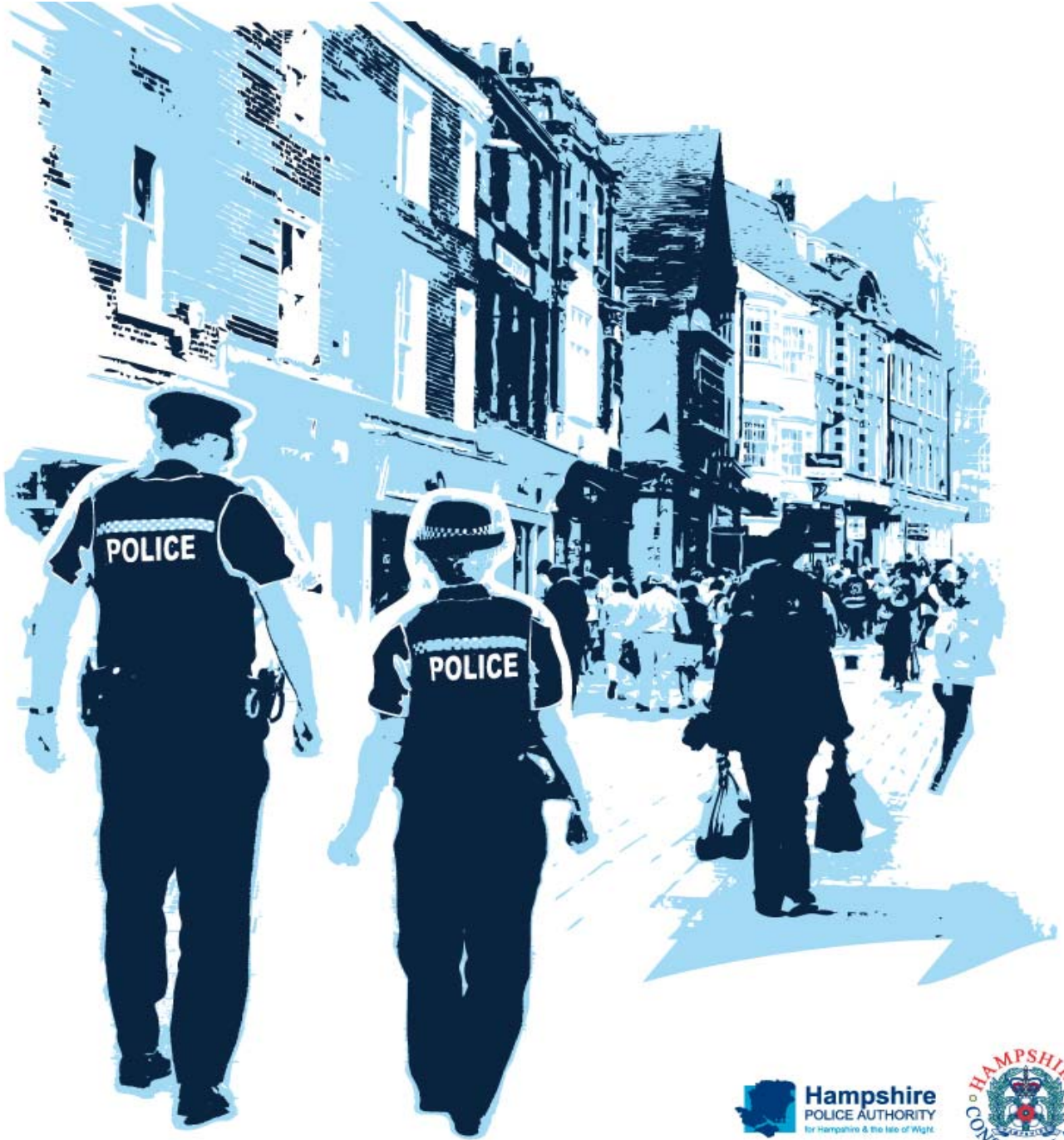


Performance Profile August 2010



2010/11 Reporting Year

This document contains a strategic overview of the Constabulary's performance. It has a variety of performance measures within it. The format of the profile has been aligned to the Policing Priorities identified by the Control Strategy. It provides information on our performance against Force targets, some of the APACS Indicators and the Policing Pledge. It also aims to provide supplementary information to assist in understanding reasons behind the performance in these areas. It has been designed as a headline document that will enable our customers, both internally and externally, to easily assess performance information for key domains. This year additional monitoring information within the six domains of the Policing Priorities will be published quarterly - a calendar of publication is located at the bottom of this page. If during a month an issue is identified which needs to be highlighted this will be done through 'exception reporting'.

A matrix can be found at the front of the profile which reflects our year to date performance against our targets.

Performance in key areas is then explored in more depth with an indication of where each measure has originated - for example, APACS Indicator or a Force Control Strategy (FCS) measure.

Where applicable, within the document, MSG (Most Similar Group) data is published along with the crime and detection data. MSGs are calculated by the Home Office based on a number of socio-demographic & geographic variables which are strongly linked to crime/incident levels and the fear of crime. These groups provide a benchmark for comparison of crime and detection rates. Below the applicable crime tables there are three rows relating to MSG data. The first provides the MSG position for the OCU/Force for that crime type. The second displays OCU Actual, this is the number of offences per 1,000 population. The third row shows the MSG Average which is the total number of offences per 1,000 population divided by the number within the MSG. The same three rows are provided in relation to detection data, where data is provided in % figures rather than per 1,000 population.

Please note: iQuanta data is provisional. Within the profile, Hampshire data is published and compared against the MSG average. The other forces within Hampshire's MSG are: Avon and Somerset, Bedfordshire, Essex Hertfordshire, Kent, Sussex and Thames Valley. We are unable to provide figures from iQuanta for these forces, due to the provisional nature of this data.

This document is then taken forward by key stakeholders within the organisation to the Force Performance Review Group, where it is used to highlight areas of good performance and those for development.

Crime OCU contribute to the following areas within this document, either via investigation, forensic support, and/or review of these crimes: homicide, serious violent, sexual and acquisitive crime, class A drug supply, drug seizures, domestic violence/hate crime, FIU form submissions, gun/knife crime (where this results in a major investigation/forensic support).

This is an evolving document and as such, the contents of which may alter over time and any feedback would be welcomed by the Performance Review Team.

Calendar of Quarterly Reporting

April - Catching criminals & managing offenders and Protecting our communities
 May - Making the most of our resources and Equipping our team to deliver
 June - Providing an excellent service and An active presence in every neighbourhood
 July - Catching criminals & managing offenders and Protecting our communities
 August - Making the most of our resources and Equipping our team to deliver
 September - Providing an excellent service and An active presence in every neighbourhood
 October - Catching criminals & managing offenders and Protecting our communities
 November - Making the most of our resources and Equipping our team to deliver
 December - Providing an excellent service and An active presence in every neighbourhood
 January - Catching criminals & managing offenders and Protecting our communities
 February - Making the most of our resources and Equipping our team to deliver
 March - The year end profile will have all six domain areas included

MSG Colour Key

Force	OCU
1-2	1-4
3-4	5-8
5-6	9-12
7-8	13-15

Index

Page FCS = Force Control Strategy; PRT = Performance Review Team

Year to date performance matrix

2	Summary			including notes on matrices terminology
3	Index			
4	Year to date targets matrix			

Providing an excellent service

5	National public confidence measure	APACS 2.2	FCS	iQuanta
5	Local confidence survey data		FCS	Consultation & Research Team
6	Overall satisfaction	APACS 1.1	FCS	Consultation & Research Team
6	Being kept informed			Consultation & Research Team
6	Comparative satisfaction of minority ethnic groups	APACS 1.3		Consultation & Research Team
6	Satisfaction of victims of racist incidents	APACS 1.2		Consultation & Research Team
6	MSG user satisfaction data			Consultation & Research Team

An active presence in every neighbourhood

7	Rowdy and nuisance behaviour		FCS	Business Objects
8	Criminal damage		FCS	Business Objects

Catching criminals and managing offenders

9	Serious acquisitive crime	APACS 5.2	FCS	Business Objects
10	Breakdown: Robbery, dwelling burglary, vehicle crime			Business Objects
10	Breakdown: Theft of a motor vehicle, theft from a motor vehicle			Business Objects
10	Organised crime groups		FCS	7 OCU Performance Team

Protecting our communities

11	Violence against the person with injury		FCS	Business Objects
12	Serious violent crime	APACS 5.1		Business Objects
13	Assault with less serious injury	APACS 5.3		Business Objects
14	Reduction in dwelling burglary		FCS	Business Objects

Making the most of our resources

15	BME recruitment		FCS	Personnel
15	Minority ethnic officer recruitment	APACS 3.1		Personnel
15	Minority ethnic police staff recruitment			Personnel
15	Female officer representation	APACS 3.2		Personnel

Equipping our team to deliver

15	Staff confidence in the organisation		FCS	Consultation & Research Team
----	--------------------------------------	--	-----	------------------------------

Monitoring Information for Making the most of our resources

16	Sickness	APACS 13.1&13.2		Delphi + Personnel - staffing figures
16	Overdue PDRs			Personnel
17	Budget spend			Finance
17	Efficiency savings			Finance
18	Specials Scorecard			Specials team
19	Specialist support 7 OCU			7 OCU Performance Team
19	Specialist support 8 OCU			8 OCU Performance Team

Monitoring Information for Equipping our team to deliver

20	Financial awareness training			Training Dept
20	Preparing for frontline supervision training			Training Dept

Year to date performance targets matrix

	Target	Actual	Central	Isle of Wight	North & East	Portsmouth	Southampton	Western
Providing an excellent service								
Confidence in local police	55.3%	52.5%	This is a Force measure					
Local confidence measure (latest quarter)	87.3%	81.0%	84.0%	81.0%	79.0%	78.0%	80.0%	83.0%
Overall satisfaction (data for rolling 12 months)	68.0%	69.0%	70.0%	69.0%	69.0%	66.0%	66.0%	73.0%
An active presence in every neighbourhood								
Rowdy & nuisance behaviour (inc vehicle nuisance)	<29069	29484	5200	2118	5367	4900	6895	5004
	OCU specific targets		5758	1908	5371	4538	6502	4992
Reduce criminal damage	<11493	10988	2295	1001	2063	1495	2227	1907
	OCU specific targets		2491	847	2247	1484	2358	2065
Catching criminals & managing offenders								
Serious acquisitive crime SD	>15%	12.3%	13.5%	20.0%	11.8%	9.8%	11.4%	13.0%
Organised crime group (OCG) - disruptions	>40%	75%	Owned by Crime OCU					
Protecting our communities								
Reduce violence against the person with injury	<6008	6239	1270	577	1009	1115	1364	904
	OCU specific targets		1220	411	990	1073	1399	915
Reduction in dwelling burglary	<2238	2068	372	122	353	421	515	285
	OCU specific targets		440	107	471	412	426	383
Making the most of our resources								
BME recruitment	>5%	5.1%	This is a Force measure					
Equipping our staff to deliver								
Staff confidence in the organisation	To be determined from initial survey		No data available for August profile					
Force Total - targets achieved		5	4	2	4	0	2	4

Notes to be read in conjunction with matrices

All citizen focus data	Based on "completely or very satisfied"
SD	Sanction detections
BME	Black and minority ethnic
OCU specific targets	OCU specific targets are rounded to 0 decimal places; the actual figure may therefore seem the same but appear amber due to this rounding

Force target areas for providing an excellent service

	Target	Actual	Central	Isle of Wight	North & East	Portsmouth	Southampton	Western
Confidence in local police (latest data)	55.3%	52.5%	This is a Force measure					
Local Confidence Measure (latest data)	87.3%	81.0%	84.0%	81.0%	79.0%	78.0%	80.0%	83.0%
Overall satisfaction (rolling 12 months)	68.0%	69.0%	70.0%	69.0%	69.0%	66.0%	66.0%	73.0%

National Public Confidence Measure

APACS 2.2 Force Target

This data is based on 'The police and local council are dealing with the anti-social behaviour and crime issues that matter in this area' by 4%

each year, as this is the second year, our target this year is an 8% improvement on baseline which equates to 55.3%.

Mar-10

Hampshire	52.5%
MSG Position	3 of 8
MSG average	51.2%

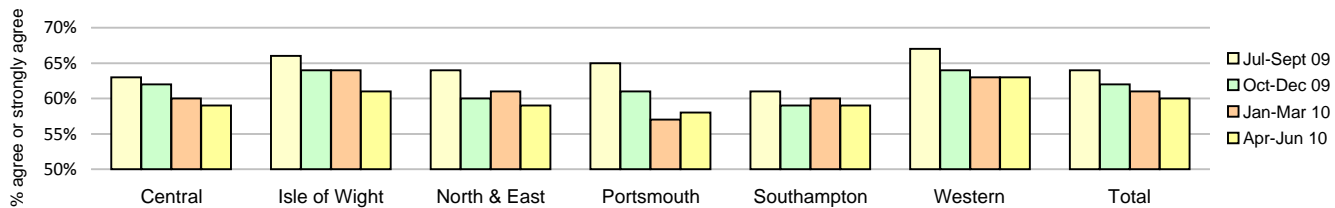
Local Confidence Survey Data

Figures relate to the percentage of respondents who agree or strongly agree with the question.

Hampshire's local surveys have a confidence level of +/-4%. This means that changes of less than 4% may not reflect a real change in performance

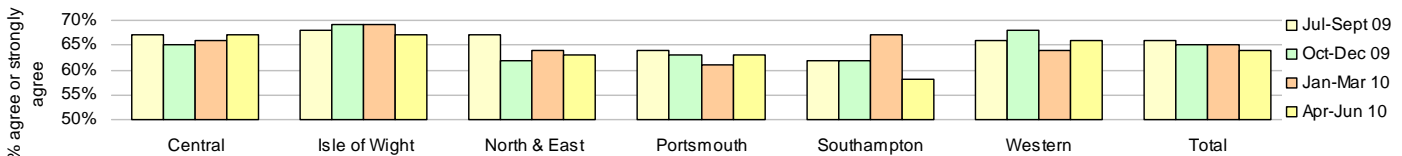
The police and local council are dealing with the anti-social behaviour and crime issues that matter in this area

	Central	Isle of Wight	North & East	Portsmouth	Southampton	Western	Force	No. Surveys
July - September 2009	63%	66%	64%	65%	61%	67%	64%	8128
October - December 2009	62%	64%	60%	61%	59%	64%	62%	3822
January - March 2010	60%	64%	61%	57%	60%	63%	61%	3708
April - June 2010	59%	61%	59%	58%	59%	63%	60%	3612



The police are dealing with the things that matter locally

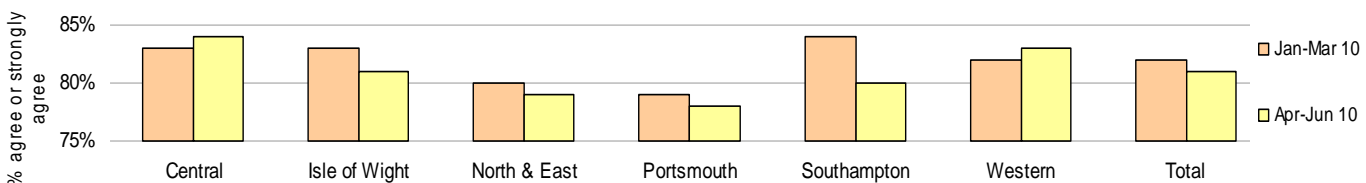
	Central	Isle of Wight	North & East	Portsmouth	Southampton	Western	Force	No. Surveys
July - September 2009	67%	68%	67%	64%	62%	66%	66%	8128
October - December 2009	65%	69%	62%	63%	62%	68%	65%	3822
January - March 2010	66%	69%	64%	61%	67%	64%	65%	3708
April - June 2010	67%	67%	63%	63%	58%	66%	64%	3612



Taking everything into account, I have confidence in the Police in this area

Force Target

Target: 87.3%	Central	Isle of Wight	North & East	Portsmouth	Southampton	Western	Force	No. Surveys
January - March 2010	83%	83%	80%	79%	84%	82%	82%	3708
April - June 2010	84%	81%	79%	78%	80%	83%	81%	3612



Force target areas for providing an excellent service

Overall satisfaction (user satisfaction survey results)

APACS 1.1 Force Target

Rolling 12 months data relates to: Sep 09 - Aug 10; rolling 3 months data relates to Jun 10 - Aug 10

Overall satisfaction includes burglary, vehicle crime, violent crime and minor injury RTCs

Target 68%	Central	Isle of Wight	North & East	Portsmouth	Southampton	Western	Total	No. Surveys
Rolling 12 months	70%	69%	69%	66%	66%	73%	69%	7923
Rolling 3 months	71%	67%	65%	66%	67%	71%	68%	1924

Being kept informed (user satisfaction survey results)

Rolling 12 months data relates to: Sep 09 - Aug 10; rolling 3 months data relates to Jun 10 - Aug 10

Being kept informed includes burglary, vehicle crime, violent crime and minor injury RTCs

	Central	Isle of Wight	North & East	Portsmouth	Southampton	Western	Total	No. Surveys
Rolling 12 months	60%	62%	58%	57%	58%	64%	60%	7682
Rolling 3 months	59%	61%	60%	58%	58%	62%	59%	1871

Comparative satisfaction of minority ethnic groups

Data relates to interviews which took place Sep 09 - Aug 10

APACS 1.3

These figures are for overall satisfaction for burglary, vehicle crime, violent crime, minor injury RTCs.

	Completely and very satisfied	Completely, very and fairly satisfied	No. Surveys
White	69.7%	84.9%	8213
Minority Ethnic	55.7%	78.8%	368
Satisfaction Gap	14.0%	6.1%	

Satisfaction of victims of racist incidents

APACS 1.2

These figures relate to interviews which took place Jul 09 - Jun 10; these will be updated quarterly

Racist incident overall satisfaction = % completely or very satisfied

	Central	Isle of Wight	North & East	Portsmouth	Southampton	Western	Total
%	62%	88%	59%	63%	58%	63%	62%
Number of surveys	34	8	29	54	64	24	213

MSG information for user satisfaction

Latest iQuanta data for MSG for the 12 months ending March 2010 (iQuanta calculate satisfaction % based on those responding that they are completely, very or fairly satisfied)

	Previous MSG position	Current MSG position	Change		Previous MSG position	Current MSG position	Change
Vehicle crime				Burglary			
Ease of contact	4/8	4/8	↔	Ease of contact	4/8	4/8	↔
Actions taken	4/8	4/8	↔	Actions taken	6/8	6/8	↔
Follow up	4/8	4/8	↔	Follow up	1/8	1/8	↔
Treatment	5/8	5/8	↔	Treatment	7/8	5/8	↑
Whole Experience	4/8	4/8	↔	Whole Experience	3/8	4/8	↓
Violent crime				RTC (minor injury)			
Ease of contact	4/8	5/8	↓	Ease of contact	1/8	1/8	↔
Actions taken	3/8	4/8	↓	Actions taken	2/8	2/8	↔
Follow up	5/8	6/8	↓	Follow up	2/8	1/8	↑
Treatment	3/8	5/8	↓	Treatment	2/8	3/8	↓
Whole Experience	4/8	4/8	↔	Whole Experience	2/8	3/8	↓
All users (excluding racist incidents)							
Ease of contact	1/8	1/8	↔				
Actions taken	4/8	4/8	↔				
Follow up	2/8	1/8	↑				
Treatment	4/8	5/8	↓				
Whole Experience	4/8	3/8	↑				

Force target areas for an active presence in every neighbourhood

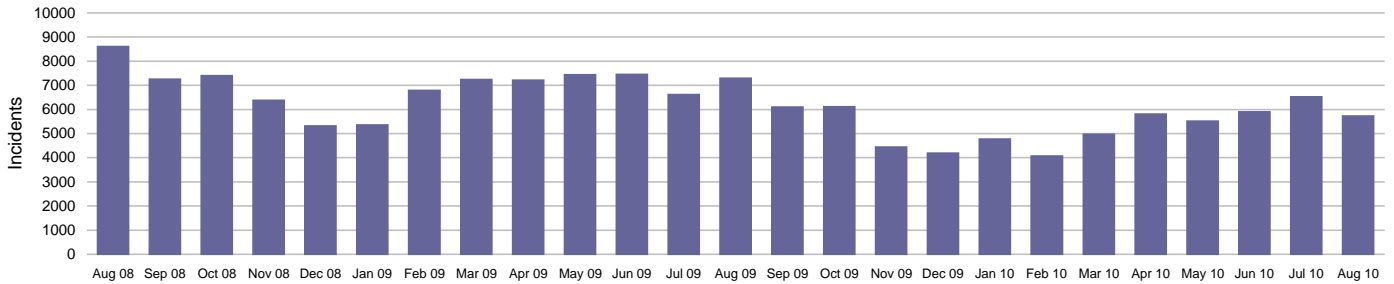
	Target	Actual	Central	Isle of Wight	North & East	Portsmouth	Southampton	Western
Rowdy & nuisance behaviour (inc Vehicle Nuisance)	29069	29484	5200	2118	5367	4900	6895	5004
	OCU specific targets		5758	1908	5371	4538	6502	4992
Reduce criminal damage	11493	10988	2295	1001	2063	1495	2227	1907
	OCU specific targets		2491	847	2247	1484	2358	2065

Rowdy & nuisance behaviour (including vehicle)

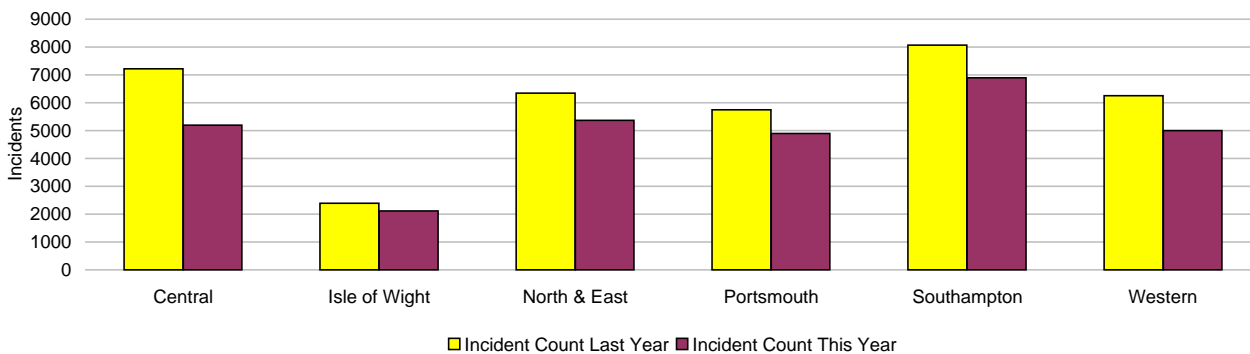
Force Target

In 2009-2010 Rowdy and Nuisance included Inappropriate use of Fireworks, Rowdy & Inconsiderate, Substance Misuse and Street Drinking, with Vehicle Related Nuisance being a separate entity for monitoring purposes however the decision this year has been to bring all key nuisance elements into one section. This data is sourced from RMS and does not reflect the complete NSIR return for Hampshire.

This target is based on a subset of the anti-social behaviour categories, it does not cover all aspects of anti-social behaviour.



Incidents	Central	Isle of Wight	North & East	Portsmouth	Southampton	Western	Force
YTD Incidents	5200	2118	5367	4900	6895	5004	29484
YTD Target	5758	1908	5371	4538	6502	4992	29069
YTD 09/10 Incidents	7216	2394	6350	5742	8066	6251	36019
This month	990	437	1049	903	1327	1024	5730
% change from 09/10	-27.94%	-11.53%	-15.48%	-14.66%	-14.52%	-19.95%	-18.14%



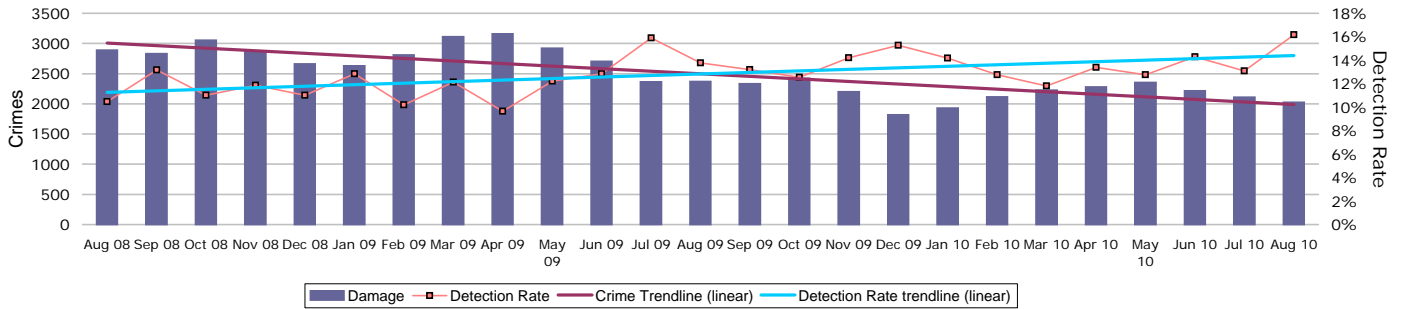
Note: MSG data is always published a month in arrears.

For an explanation of this data, refer to the Summary on page 2

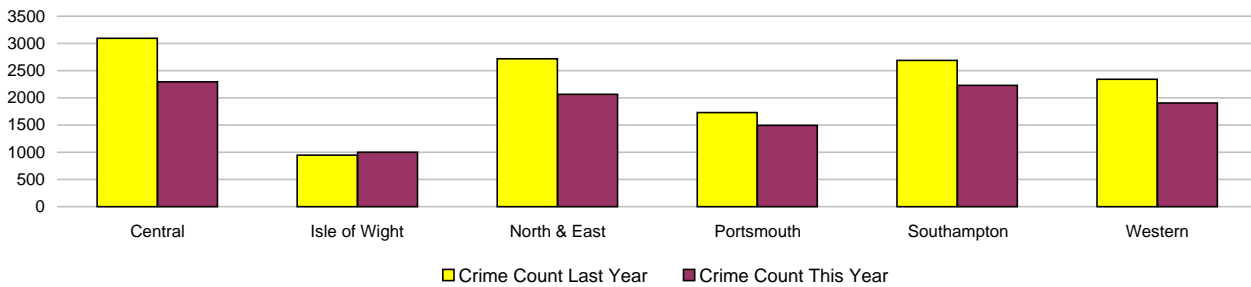
Force target areas for an active presence in every neighbourhood

Criminal damage

Force Target

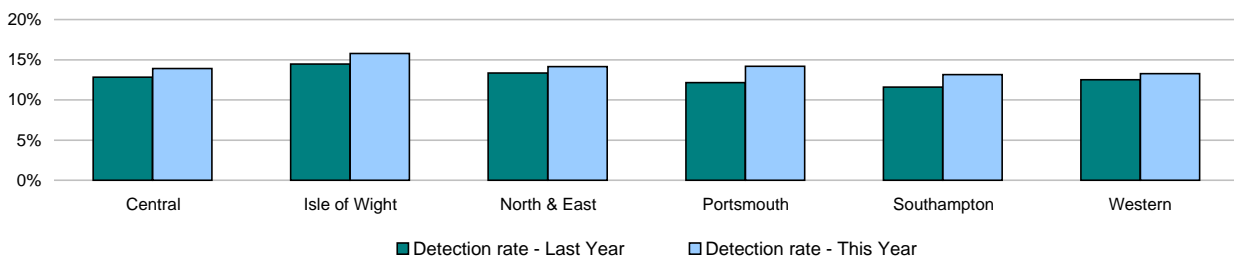


Crimes	Central	Isle of Wight	North & East	Portsmouth	Southampton	Western	Force
YTD Crimes	2295	1001	2063	1495	2227	1907	10988
YTD Target	2491	847	2247	1484	2358	2065	11493
YTD 09/10 Crimes	3097	947	2717	1731	2687	2341	13520
This month	425	191	405	269	406	332	2028
% change from 09/10	-25.90%	5.70%	-24.07%	-13.63%	-17.12%	-18.54%	-18.73%
MSG position	13 of 15	15 of 15	8 of 15	12 of 15	15 of 15	9 of 15	8 of 8
MSG actual	3.048	4.509	2.880	4.530	5.801	2.915	3.596
MSG average	2.889	3.414	2.878	3.882	4.153	2.916	3.316



Detections	Central	Isle of Wight	North & East	Portsmouth	Southampton	Western	Force
YTD Detection Rate	13.90%	15.78%	14.15%	14.18%	13.16%	13.27%	13.90%
This month	13.18%	20.94%	13.09%	18.22%	17.49%	17.77%	16.17%
YTD 09/10 Detections	12.82%	14.47%	13.36%	12.13%	11.57%	12.52%	12.66%
MSG position	9 of 15	6 of 15	9 of 15	3 of 15	6 of 15	10 of 15	6 of 8
MSG actual	13.22%	15.37%	13.28%	14.29%	12.96%	12.41%	13.35%
MSG average	13.24%	14.41%	13.96%	12.30%	13.24%	13.18%	14.10%

Note: Detections refer to Sanction Detections ONLY



Note: MSG data is always published a month in arrears.

For an explanation of this data, refer to the Summary on page 2

August 2010

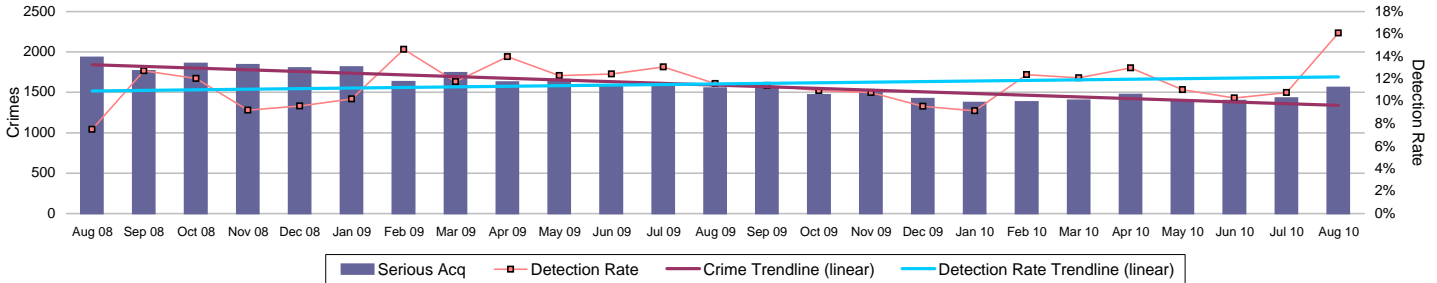
Force target areas for catching criminals and managing offenders

	Target	Actual	Central	Isle of Wight	North & East	Portsmouth	Southampton	Western
Serious acquisitive detection rate	15%	12.3%	13.5%	20.0%	11.8%	9.8%	11.4%	13.0%
OCG disruptions	40%	75%	Owned by Crime OCU					

Serious acquisitive crime

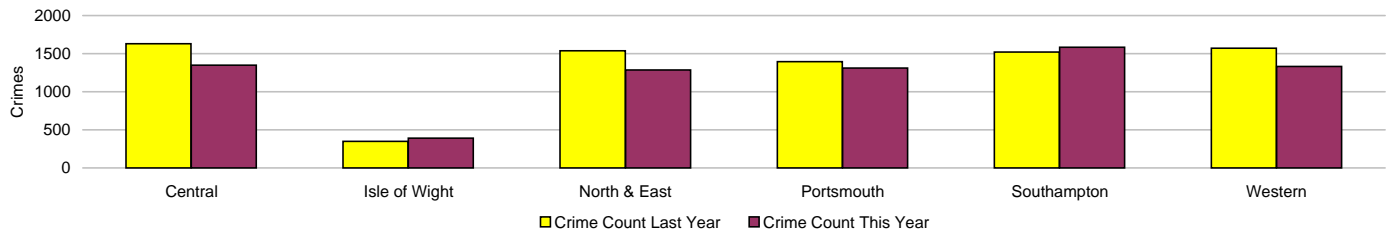
APACS 5.2

Serious acquisitive crime consists of crimsec codes 28, 29, 34A, 34B, 37/2, 45 and 48



Crimes

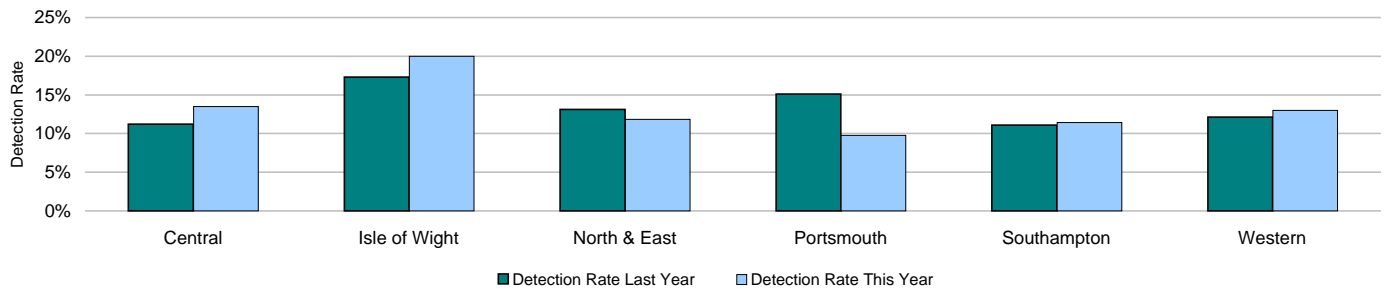
	Central	Isle of Wight	North & East	Portsmouth	Southampton	Western	Force
YTD Crimes	1349	390	1286	1310	1586	1333	7254
YTD 09/10 Crimes	1631	347	1539	1397	1522	1573	8009
This month	307	96	265	270	347	275	1560
% change from 09/10	-17.29%	12.39%	-16.44%	-6.23%	4.20%	-15.26%	-9.43%
MSG actual	3 of 15	4 of 15	3 of 15	3 of 15	7 of 15	7 of 15	2 of 8
MSG average	1.709	1.627	1.787	3.747	3.947	1.925	2.269
MSG average	2.309	2.134	2.268	4.281	4.144	2.092	2.796



Detections

Target >15%	Central	Isle of Wight	North & East	Portsmouth	Southampton	Western	Force
YTD Detection Rate	13.49%	20.00%	11.82%	9.77%	11.41%	12.98%	12.32%
This month	18.89%	29.17%	15.47%	17.41%	9.80%	15.64%	16.09%
YTD 09/10 Detections	11.22%	17.29%	13.13%	15.10%	11.10%	12.14%	12.69%
MSG position	12 of 15	8 of 15	14 of 15	12 of 15	10 of 15	10 of 15	5 of 8
MSG actual	10.09%	15.38%	9.88%	10.26%	12.87%	11.11%	11.08%
MSG average	12.85%	15.82%	13.23%	11.70%	13.85%	12.82%	12.95%

Note: Detections refer to Sanction Detections ONLY



Force target areas for catching criminals and managing offenders

Serious acquisitive crime breakdown

Robbery

Year to date	Central	Isle of Wight	North & East	Portsmouth	Southampton	Western	Force
Crimes	40	12	81	112	174	48	467
09/10 crimes	41	13	62	107	146	64	433
% change from 09/10	-2.44%	-7.69%	30.65%	4.67%	19.18%	-25.00%	7.85%
MSG position	5 of 15	3 of 15	11 of 15	7 of 15	12 of 15	6 of 15	4 of 8
Detection rate	17.50%	41.67%	29.63%	19.64%	27.01%	35.42%	26.12%
MSG position	9 of 15	3 of 15	12 of 15	12 of 15	10 of 15	5 of 15	4 of 8
August 2010							
Crimes	8	1	11	23	35	17	95
Detection rate	37.50%	300.00%	45.45%	30.43%	17.14%	17.65%	28.42%

Dwelling burglary

Year to date	Central	Isle of Wight	North & East	Portsmouth	Southampton	Western	Force
Crimes	372	122	353	421	515	285	2068
09/10 crimes	471	107	469	408	441	372	2268
% change from 09/10	-21.02%	14.02%	-24.73%	3.19%	16.78%	-23.39%	-8.82%
MSG position	4 of 15	4 of 15	3 of 15	4 of 15	7 of 15	2 of 15	2 of 8
Detection rate	17.74%	18.03%	13.60%	13.78%	16.89%	21.75%	16.59%
MSG position	10 of 15	12 of 15	14 of 15	10 of 15	6 of 15	6 of 15	5 of 8
August 2010							
Crimes	91	35	74	58	109	56	423
Detection rate	6.59%	25.71%	9.46%	18.97%	19.27%	5.36%	13.48%

Vehicle crime

Year to date	Central	Isle of Wight	North & East	Portsmouth	Southampton	Western	Force
Crimes	937	256	852	777	897	1000	4719
09/10 crimes	1119	227	1008	882	935	1137	5308
% change from 09/10	-16.26%	12.78%	-15.48%	-11.90%	-4.06%	-12.05%	-11.10%
MSG position	7 of 15	4 of 15	4 of 15	4 of 15	7 of 15	10 of 15	1 of 8
Detection rate	11.63%	19.92%	9.39%	6.18%	5.24%	9.40%	9.09%
MSG position	11 of 15	6 of 15	9 of 15	12 of 15	11 of 15	12 of 15	7 of 8
August 2010							
Crimes	208	60	180	189	203	202	1042
Detection rate	23.56%	26.67%	16.11%	15.34%	3.45%	18.32%	16.03%
Detection numbers	49	16	29	29	7	37	167

Theft of a motor vehicle

Year to date	Central	Isle of Wight	North & East	Portsmouth	Southampton	Western	Force
Crimes	175	69	197	130	209	168	948
MSG position	4 of 15	3 of 15	6 of 15	1 of 15	7 of 15	7 of 15	1 of 8
Detection rate	21.71%	31.88%	17.26%	8.46%	9.57%	20.83%	16.88%
MSG position	11 of 15	1 of 15	9 of 15	8 of 15	10 of 15	4 of 15	3 of 8
August 2010							
Crimes	35	15	38	35	44	27	194
Detection rate	31.43%	26.67%	23.68%	8.57%	4.55%	44.44%	21.13%
Detection numbers	11	4	9	3	2	12	41

Theft from a motor vehicle

Year to date	Central	Isle of Wight	North & East	Portsmouth	Southampton	Western	Force
Crimes	762	187	655	647	688	832	3771
MSG position	7 of 15	5 of 15	2 of 15	9 of 15	6 of 15	12 of 15	3 of 8
Detection rate	9.32%	15.51%	7.02%	5.72%	3.92%	7.09%	7.13%
MSG position	11 of 15	13 of 15	13 of 15	11 of 15	11 of 15	12 of 15	7 of 8
August 2010							
Crimes	173	45	142	154	159	175	848
Detection rate	21.97%	26.67%	14.08%	16.88%	3.14%	14.29%	14.86%
Detection numbers	38	12	20	26	5	25	126

Robbery, dwelling burglary and vehicle crime are the component parts of serious acquisitive crime.

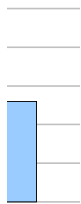
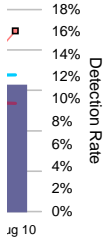
Number of Organised Crime Groups (OCGs) disrupted

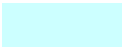
The Force target for 2010/11 is to dismantle or disrupt at least 40% of identified organised crime groups as a result of police or multi agency activity.

YTD August 2010	2009/2010	2010/2011
Number of OCGs identified and mapped	12	4
Number of OCGs disrupted or partially disrupted through Crime OCU activity	10	3
Number of OCGs subject to tactical activity	66	54



Force Target





Force Target

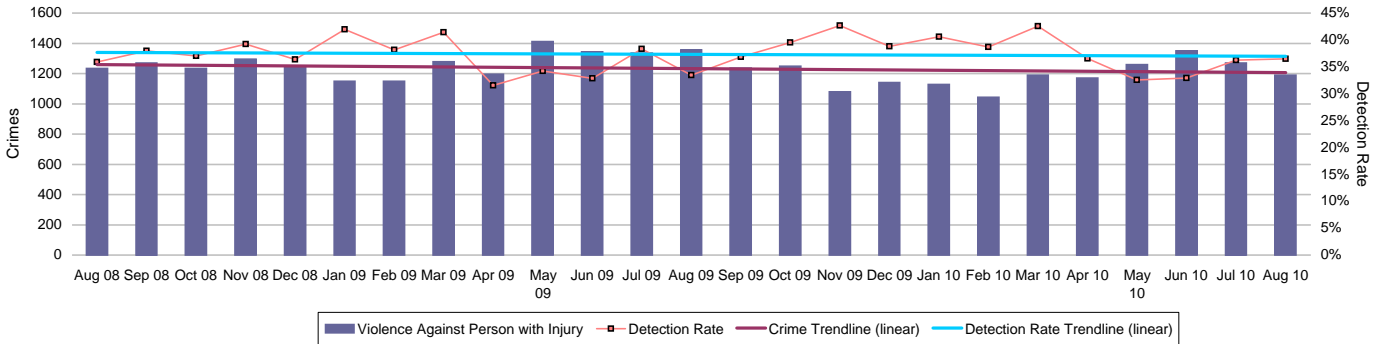
Force target areas for protecting our communities

	Target	Actual	Central	Isle of Wight	North & East	Portsmouth	Southampton	Western
Reduction of VAP with injury	6008	6239	1270	577	1009	1115	1364	904
	OCU specific targets		1220	411	990	1073	1399	915
Reduction in dwelling burglary	2238	2068	372	122	353	421	515	285
	OCU specific targets		440	107	471	412	426	383

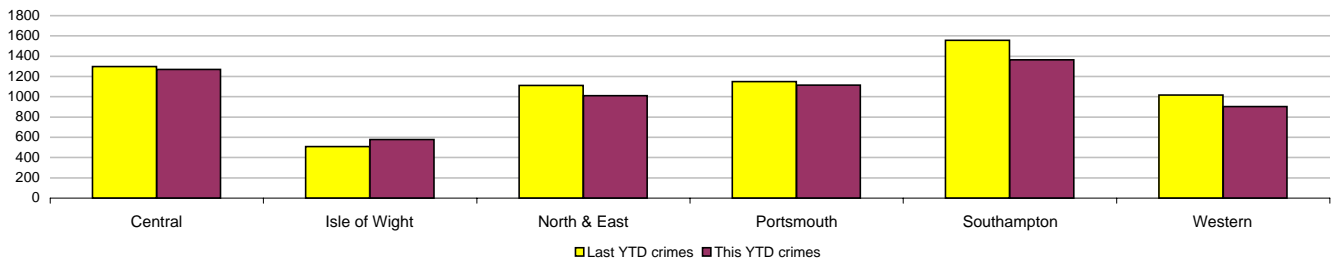
Violence against the person (VAP) with injury

VAP with injury crimsec codes 1, 2, 4.1-4.4, 4.6-4.10, 5A, 5B, 5C, 8F, 8G, 8H, 8J, 8K and 37.1

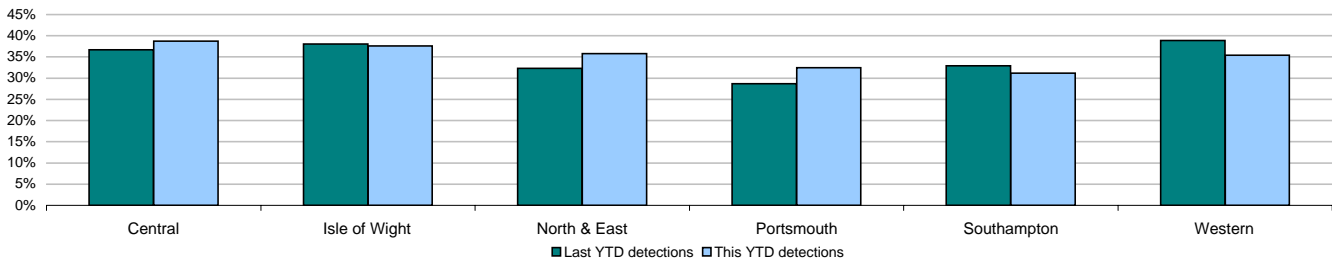
Force Target



Crimes	Central	Isle of Wight	North & East	Portsmouth	Southampton	Western	Force
YTD Crimes	1270	577	1009	1115	1364	904	6239
YTD Target	1220	411	990	1073	1399	915	6008
YTD 09/10 Crimes	1299	510	1111	1148	1557	1016	6641
This month	252	136	175	206	242	178	1189
% change from 09/10	-2.23%	13.14%	-9.18%	-2.87%	-12.40%	-11.02%	-6.05%
MSG position	13 of 15	14 of 15	11 of 15	14 of 15	14 of 15	8 of 15	7 of 8
MSG actual	1.734	2.504	1.432	3.501	3.965	1.358	2.076
MSG average	1.411	1.856	1.039	2.341	2.55	1.374	1.657



Detections	Central	Isle of Wight	North & East	Portsmouth	Southampton	Western	Force
YTD Detection Rate	38.74%	37.61%	35.78%	32.47%	31.16%	35.40%	34.89%
This month	40.48%	35.29%	38.29%	33.98%	38.02%	30.90%	36.50%
YTD 09/10 Detections	36.72%	38.04%	32.31%	28.66%	32.95%	38.88%	34.14%
MSG position	13 of 15	7 of 15	12 of 15	10 of 15	11 of 15	9 of 15	6 of 8
MSG actual	37.48%	43.20%	37.51%	35.38%	34.26%	41.15%	37.31%
MSG average	40.74%	43.44%	42.39%	37.44%	38.52%	40.75%	41.31%

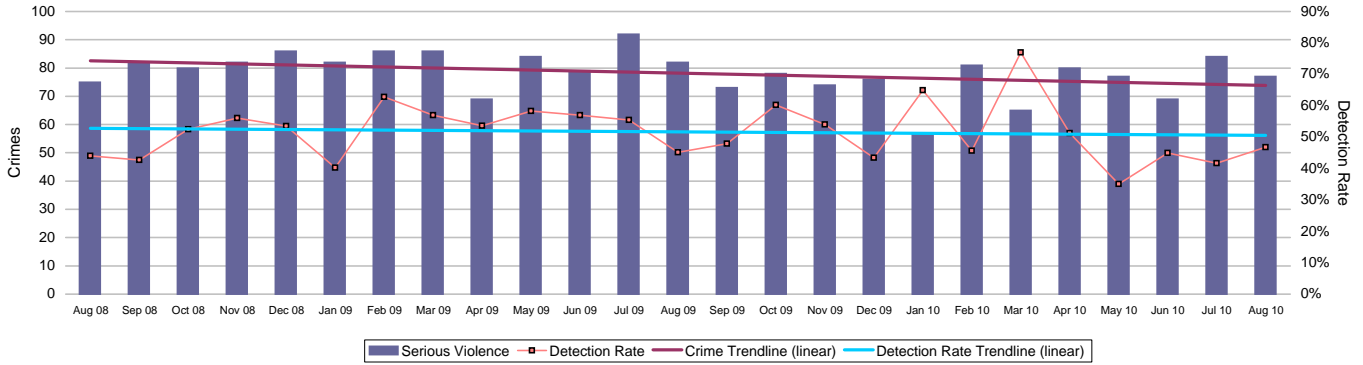


Force target areas for protecting our communities

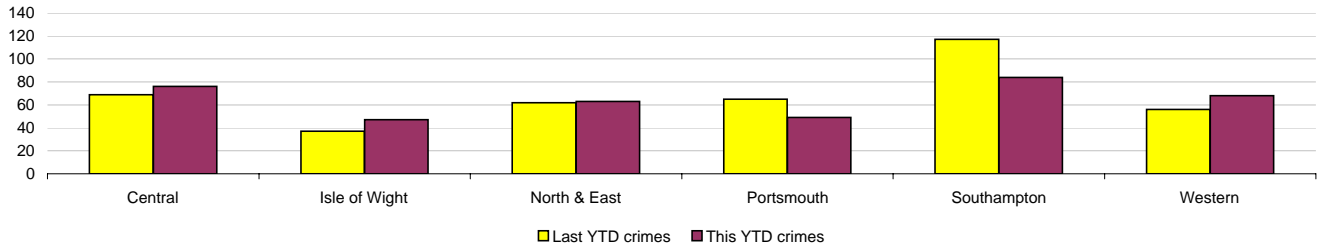
Serious violent crime

APACS 5.1

Serious violent crime consists of crimsec codes 1, 2, 4.1-4.4, 4.6, 4.8, 5A, 5B, 5C, 8F, 8H and 37.1

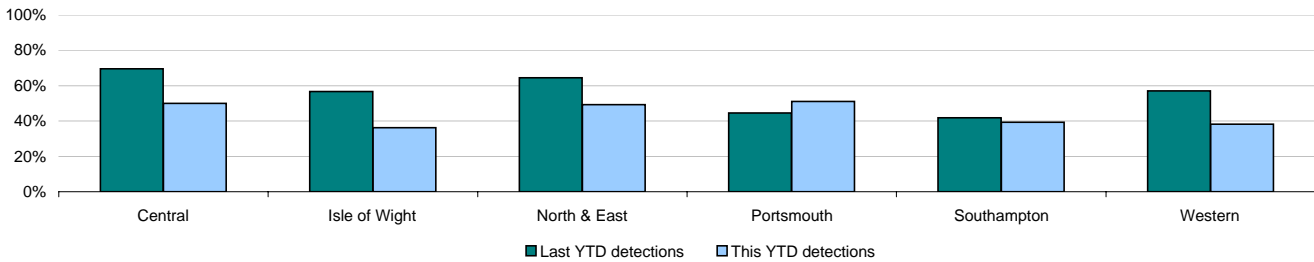


Crimes	Central	Isle of Wight	North & East	Portsmouth	Southampton	Western	Force
YTD Crimes	76	47	63	49	84	68	387
YTD 09/10 Crimes	69	37	62	65	117	56	406
This month	18	14	11	8	14	12	77
% change from 09/10	10.14%	27.03%	1.61%	-24.62%	-28.21%	21.43%	-4.68%
MSG position	9 of 15	14 of 15	8 of 15	3 of 15	7 of 15	14 of 15	6 of 8
MSG actual	0.084	0.200	0.081	0.140	0.231	0.103	0.121
MSG average	0.093	0.145	0.078	0.250	0.264	0.080	0.123



Detections	Central	Isle of Wight	North & East	Portsmouth	Southampton	Western	Force
YTD Detection Rate	50.00%	36.17%	49.21%	51.02%	39.29%	38.24%	43.93%
This month	38.89%	42.86%	63.64%	75.00%	57.14%	16.67%	46.75%
YTD 09/10 Detections	69.57%	56.76%	64.52%	44.62%	41.88%	57.14%	53.94%
MSG position	8 of 15	14 of 15	13 of 15	10 of 15	4 of 15	12 of 15	5 of 8
MSG actual	56.13%	40.00%	48.78%	44.44%	52.04%	51.68%	49.77%
MSG average	57.86%	53.08%	57.26%	45.24%	47.17%	60.78%	48.81%

Note: Detections refer to Sanction Detections ONLY

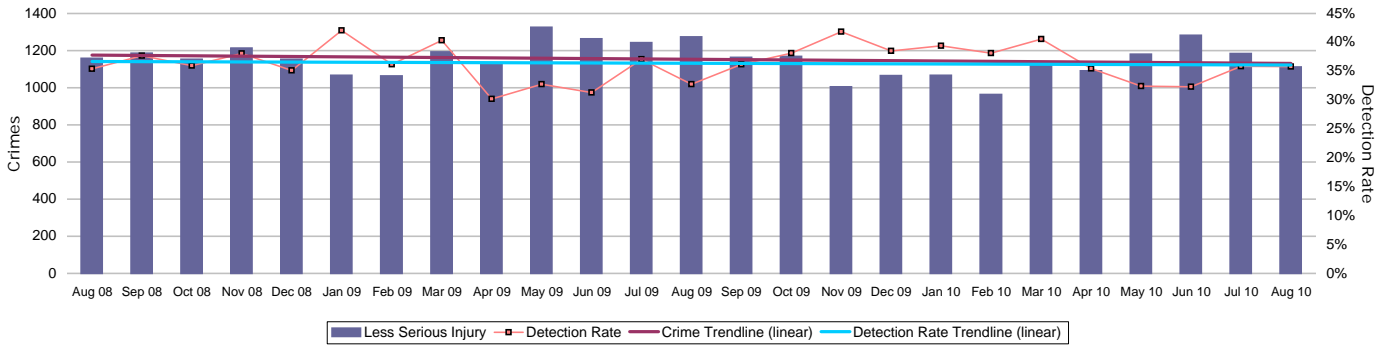


Force target areas for protecting our communities

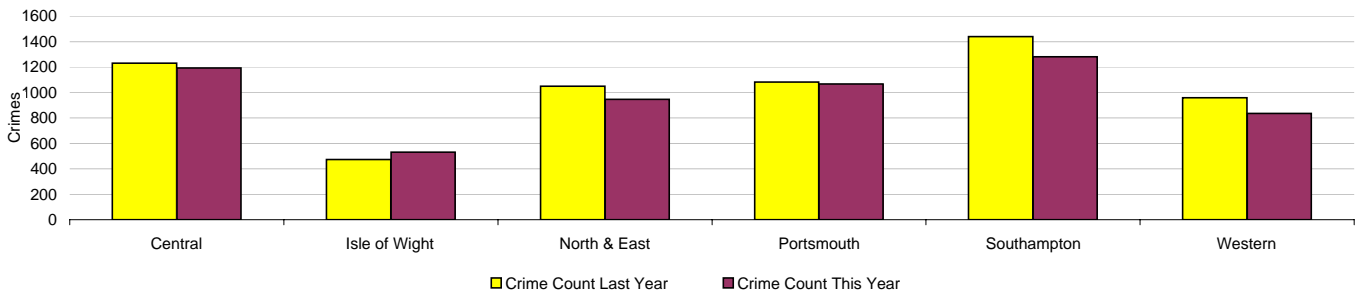
Assault with less serious injury

APACS 5.3

Assault with less serious injury consists of crimsec codes 8G and 8J

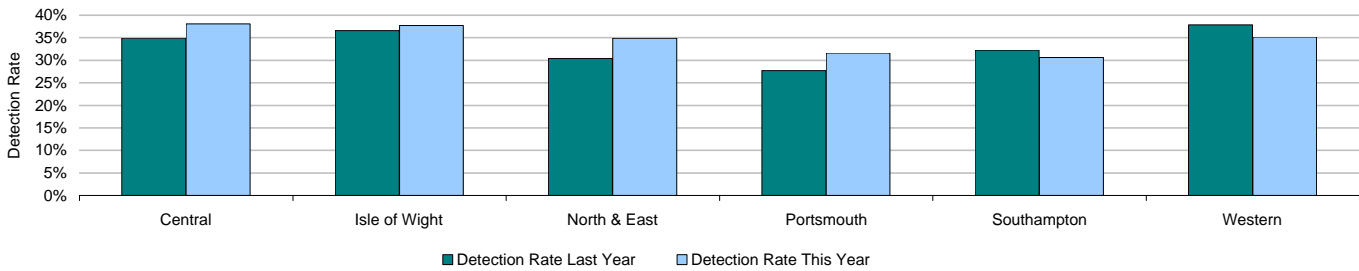


Crimes	Central	Isle of Wight	North & East	Portsmouth	Southampton	Western	Force
YTD Crimes	1193	530	946	1066	1280	836	5851
YTD 09/10 Crimes	1230	473	1049	1083	1439	959	6233
This month	234	122	164	198	228	166	1112
% change from 09/10	-3.01%	12.05%	-9.82%	-1.57%	-11.05%	-12.83%	-6.13%
MSG position	13 of 15	14 of 15	11 of 15	14 of 15	14 of 15	6 of 15	6 of 8
MSG actual	1.648	2.305	1.225	3.361	3.464	1.256	1.256
MSG average	1.317	1.711	1.07	2.091	2.286	1.294	1.294



Detections	Central	Isle of Wight	North & East	Portsmouth	Southampton	Western	Force
YTD Detection Rate	38.06%	37.74%	34.88%	31.61%	30.63%	35.17%	34.30%
This month	40.60%	34.43%	36.59%	32.32%	36.84%	31.93%	35.79%
YTD 09/10 Detections	34.88%	36.58%	30.41%	27.70%	32.24%	37.85%	32.86%
MSG position	13 of 15	7 of 15	12 of 15	10 of 15	11 of 15	7 of 15	6 of 8
MSG actual	36.47%	43.47%	36.65%	34.89%	33.14%	40.38%	36.51%
MSG average	39.67%	42.72%	41.59%	36.58%	37.60%	39.57%	40.84%

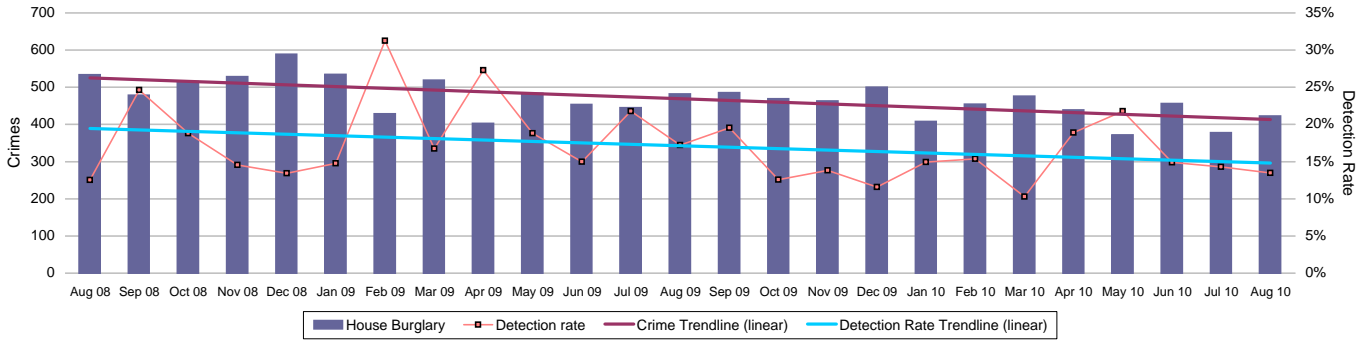
Note: Detections refer to Sanction Detections ONLY



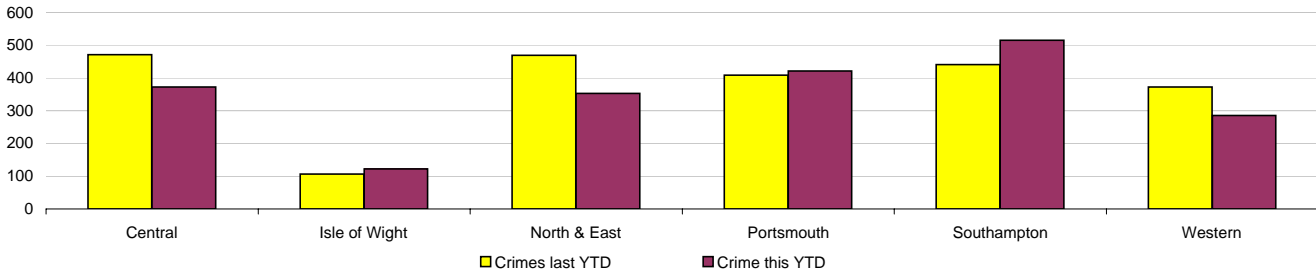
Force target areas for protecting our communities

Reduction in Dwelling Burglary

Force Target

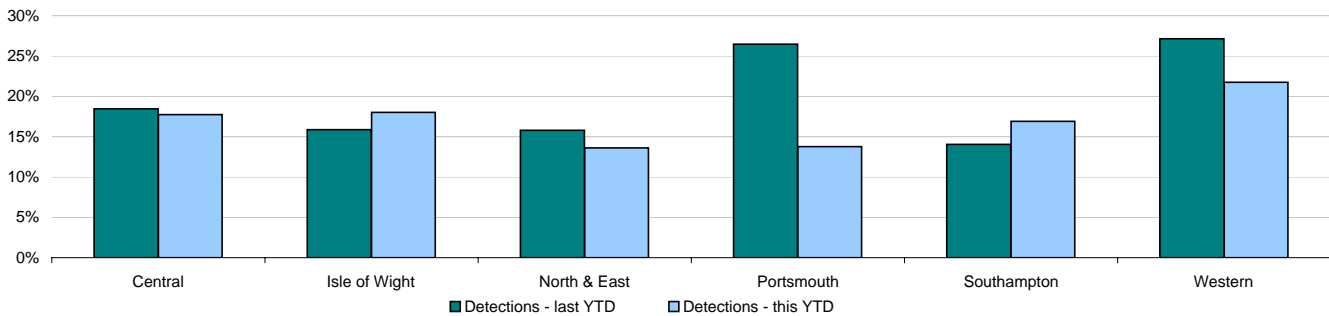


Crimes	Central	Isle of Wight	North & East	Portsmouth	Southampton	Western	Force
YTD Crimes	372	122	353	421	515	285	2068
YTD Target	440	107	471	412	426	383	2238
YTD 09/10 Crimes	471	107	469	408	441	372	2268
This month	91	35	74	58	109	56	423
% change from 09/10	-21.02%	14.02%	-24.73%	3.19%	16.78%	-23.39%	-8.82%
MSG position	4 of 15	4 of 15	3 of 15	4 of 15	7 of 15	2 of 15	2 of 8
MSG actual	1.132	1.216	1.188	2.962	3.011	0.955	1.533
MSG average	1.721	1.64	1.674	3.623	3.375	1.522	2.163



Detections	Central	Isle of Wight	North & East	Portsmouth	Southampton	Western	Force
YTD Detection Rate	17.74%	18.03%	13.60%	13.78%	16.89%	21.75%	16.59%
This month	6.59%	25.71%	9.46%	18.97%	19.27%	5.36%	13.48%
YTD 09/10 Detections	18.47%	15.89%	15.78%	26.47%	14.06%	27.15%	19.80%
MSG position	10 of 15	12 of 15	14 of 15	10 of 15	6 of 15	6 of 15	5 of 8
MSG actual	14.55%	15.10%	12.06%	13.17%	18.21%	18.87%	15.24%
MSG average	17.47%	17.95%	17.83%	13.93%	16.86%	17.42%	16.57%

Note: Detections refer to Sanction Detections ONLY



Force target areas for making the most of our resources

Force target areas for equipping our staff to deliver

	Target	Actual	Central	Isle of Wight	North & East	Portsmouth	Southampton	Western
BME recruitment	5% of all recruits	5.1%	This is a Force measure					

	Target	Actual	Central	Isle of Wight	North & East	Portsmouth	Southampton	Western
Staff confidence in the organisation	To be agreed		To be agreed					

Minority ethnic recruitment

Force Target

The 2010/11 target is based on all police staff and police officer recruits. Data published previously has related only to police officer recruitment.

Target = 5%	All recruits	Minority ethnic recruits	%
YTD August 2010	138	7	5.1%

Minority ethnic police officer recruitment

APACS 3.1

	All recruits	Minority ethnic recruits	%
YTD August 2010	39	4	10.3%

Minority ethnic police staff recruitment

	All recruits	Minority ethnic recruits	%
YTD August 2010	99	3	3.0%

Female officer representation

APACS 3.2

	Male strength	Female strength	%
YTD August 2010	2622.1	1026.4	28.13%

Staff confidence in the organisation

Force Target

This is a new target area for 2010/11. This will be based up on the results of the internal staff survey. At the current time it is not possible to set a specific target as no baseline data is available. A target will be established once data from the internal staff survey becomes available

Monitoring information for making the most of our resources

Sickness data

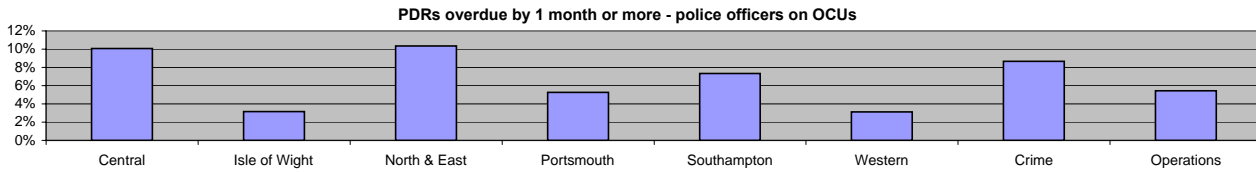
APACS 13.1
APACS 13.2

Sickness Data

In July 2009 Hampshire Constabulary undertook a major upgrade of the software used to provide sickness data. This upgrade resulted in a significant amount of change to the system and has resulted in a substantial amount of work being required to enable this data to be published once again. Due to resourcing issues, it has not been possible to complete this work in time for the August Performance Profile.

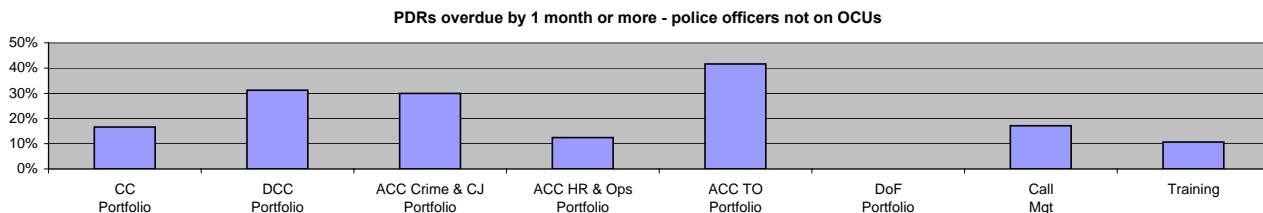
Overdue PDRs

Police officer PDRs - police officers in OCUs



August 2010	Central	Isle of Wight	North & East	Portsmouth	Southampton	Western	Crime	Operations
Population	606	222	561	399	491	515	392	386
Overdue	61	7	58	21	36	16	34	21
% overdue	10%	3%	10%	5%	7%	3%	9%	5%

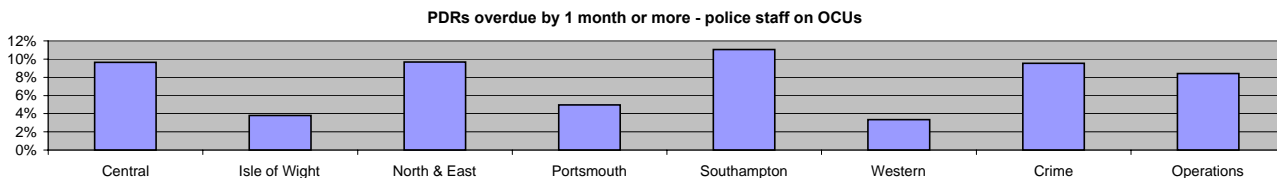
Police officer PDRs - police officers not on OCUs



August 2010	CC Portfolio	DCC Portfolio	ACC Crime & CJ Portfolio	ACC HR & Ops Portfolio	ACC TO Portfolio	DoF Portfolio	Call Mgt	Training
Population	6	32	10	8	12	0	35	56
Overdue	1	10	3	1	5	N/A	6	6
% overdue	17%	31%	30%	13%	42%	N/A	17%	11%

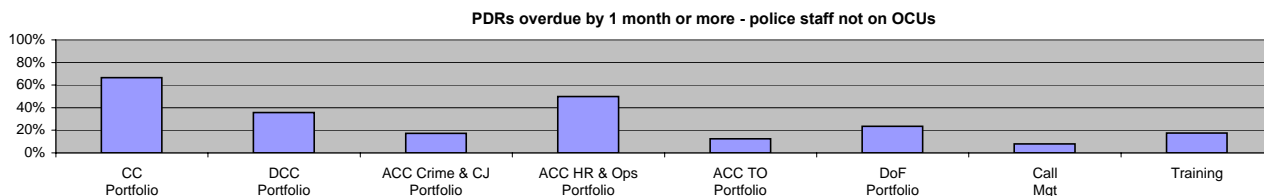
Note: ACC HR and Ops Portfolio excludes Training figures which are reported on separately. No police officers work within DoF Portfolio.
ACC TO excludes Call Mgt which are reported on separately

Police staff PDRs - police staff in OCUs



August 2010	Central	Isle of Wight	North & East	Portsmouth	Southampton	Western	Crime	Operations
Population	249	105	207	182	208	209	325	131
Overdue	24	4	20	9	23	7	31	11
% overdue	10%	4%	10%	5%	11%	3%	10%	8%

Police staff PDRs - police staff not in OCUs



August 2010	CC Portfolio	DCC Portfolio	ACC Crime & CJ Portfolio	ACC HR & Ops Portfolio	ACC TO Portfolio	DoF Portfolio	Call Mgt	Training
Population	3	306	331	60	8	144	425	86
Overdue	2	109	57	30	1	34	34	15
% overdue	67%	36%	17%	50%	13%	24%	8%	17%

Note: ACC HR and Ops Portfolio excludes Training figures which are reported on separately
ACC TO excludes Call Mgt which are reported on separately

Monitoring information for making the most of our resources

Budget spend

The actual spend to the end of January 2010 was £238.815m. The projected spend for the force at the end of the financial year is £298.394m, which will be an underspend of £4.703m against the agreed budget.

	Target	Actual
Budget spend	33%	30%
Efficiency savings 2008-11 (£m)	33	36.4

	Central	Isle of Wight	North & East	Portsmouth	Southampton	Western	Crime	Operations
Budget spend	33%	33%	33%	32%	32%	31%	31%	31%
Efficiency savings 2008-11 (£m)	This is a Force measure							

	Central	Isle of Wight	North & East	Portsmouth	Southampton	Western	Crime	Operations
Projected over/(under)spend 2010/2011	-£1,109,000	-£96,000	£527,000	-£1,024,000	-£1,195,000	-£1,772,000	-£1,274,000	-£754,000

Efficiency savings

The Authority needs to maximise efficiency gains both due to its budgetary constraints and in order to achieve value for money. In addition, there is a national Home Office target to deliver recurring efficiency or productivity gains equivalent to 10.3% of the 2007/08 'Gross Revenue Expenditure' over three years, by the end of 2010/11. Each Authority must set its own challenging target. The Authority and Force are currently working to a target equivalent to the national target, which equates to £33m over the 3 years (an average of £11m per annum). The actual achieved as at 31/03/10 was £36.4m. The current value of efficiency initiatives included in the register is £40.974m

Monitoring information for making the most of our resources

Special Constable Balanced Scorecard

July-2010	Central	Isle of Wight	North & East	Portsmouth	Southampton	Western	Force	Average
Total number of officers	91	17	87	73	63	71	402	n/a
Total number of operational hours	*755	456	1452	*0	573	873	4108	n/a
Number of operational hours per 1000 population	*1.8	3.3	3.5	*0	3.0	2.4	2.4	2
Average number of operational hours per officer	*8.5	26.8	17.7	*0	9.1	12.0	10.4	12
Leavers joining regular service or transferring to another Force	0	1	0	1	0	0	2	0
Leavers not joining regular service or transferring to another Force	1	1	1	3	0	0	6	1
Number of officers completing at least 16 hours of duty during the month	*23	6	42	*0	21	37	129	n/a

* Note: no data supplied by Havant District in Central OCU and Portsmouth OCU

Gender	Central	Isle of Wight	North & East	Portsmouth	Southampton	Western	Force
Male	56	13	67	48	44	53	281
Female	33	4	20	25	19	20	121

Ethnicity	Central	Isle of Wight	North & East	Portsmouth	Southampton	Western	Force
White	88	17	84	72	61	73	395
Mixed	1	0	0	0	0	0	1
Black or black British	0	0	2	0	1	0	3
Asian or asian British	0	0	1	1	0	0	2
Chinese or other	0	0	0	0	1	0	1
Not stated	0	0	0	0	0	0	0

Age	Central	Isle of Wight	North & East	Portsmouth	Southampton	Western	Force
25 and under	39	3	28	44	20	35	169
26 to 40	29	6	33	19	39	22	148
41 to 55	17	6	22	8	3	15	71
Over 55	4	2	4	2	1	1	14

Length of service	Central	Isle of Wight	North & East	Portsmouth	Southampton	Western	Force
up to 1 year	33	3	21	27	16	14	114
1yr to 5 years	32	9	37	40	42	39	199
5 to 10 years	10	1	10	3	4	7	35
10 to 15 years	8	2	12	3	0	4	29
15 to 20 years	3	1	6	0	0	8	18
20 to 25 years	1	0	0	0	0	0	1
25 years and over	2	1	1	0	1	1	6
Number of joiners	4	0	1	6	3	1	15

Monitoring information for making the most of our resources

Specialist support - 7 OCU

7 OCU	Central	Isle of Wight	North & East	Portsmouth	Southampton	Western	Force
April 2010	1	0	3	0	3	2	9
May 2010	3	0	0	1	14	1	19
June 2010	1	1	2	0	7	5	16
July 2010	1	0	1	0	6	2	10
August 2010	0	0	1	1	0	1	3
Total	6	1	7	2	30	11	57

Note: Assistance given with interviewing, house search, statement taking and investigatory advice

Specialist support - 8 OCU

Activity (operations/tasks)

	Central	IOW	North & East	Portsmouth	Southampton	Western	Other	Force
Number of activities	88	99	90	70	107	145	18	617
Arrests	29	24	24	31	32	16	5	161
Vehicle Seizures	129	55	36	93	118	39	2	472
Impairment	9	5	10	4	2	7	3	40

ProActive Teams Activity

	Central	IOW	North & East	Portsmouth	Southampton	Western	Strategic Roads	Out of County	Force
Days spent in each OCU	48	6	102	41	84	51	8	10	350
Arrests	20	4	37	22	41	8	2	10	144
Vehicle Seizures	149	30	108	105	199	67	4	34	696
Impairment	5	0	9	4	2	0	0	0	20
No. Vehicles Stopped	707	113	1548	625	1322	373	27	195	4910

Fixed Penalty Tickets and Driver Awareness Training offers

Road safety interventions

	8 OCU Total	Force Total	8 OCU % of Force
Speed Offences	3477	4669	74%
Mobile Phone Offences	1730	2462	70%
Seatbelt Offences	867	1309	66%
Other FPNs	1742	3907	45%

Monitoring information for equipping our team to deliver

Financial awareness training

	Full Year Apr 10 - Mar 11	
	Courses Planned	Numbers to be trained
Financial Awareness	8	120

Year to Date (August 10)	
Courses Held	Numbers Trained
3	26

Preparing for frontline supervision

	Full Year Apr 10 - Mar 11	
	Courses Planned	Numbers to be trained
Sergeants Operational Activities	7	70
Inspectors Statutory Responsibilities	7	98
First Line Manager - Leadership Part 1	7	112
First Line Manager - Leadership Part 2	7	112
First Line Manager - Action Learning Sets	32	192

Year to Date (August 10)	
Courses Held	Numbers Trained
5	60
1	90
4	40
5	52
8	75