

# Performance Profile March 2010



Summary

2009/10 Reporting Year

This document contains a strategic overview of the Constabulary's performance. It has a variety of performance measures within it. The format of the profile has been aligned to the Policing Priorities identified by the Control Strategy. It provides information on our performance against Force targets, some of the APACS Indicators and the Policing Pledge. It also aims to provide supplementary information to assist in understanding reasons behind the performance in these areas. It has been designed as a headline document that will enable our customers, both internally and externally, to easily assess performance information for key domains.

At the front of the document there are several matrices that reflect our performance against our targets, firstly year to date and secondly relevant for that particular month.

Performance in key areas is then explored in more depth with an indication of where each measure has originated - for example, APACS Indicator or a Force Control Strategy (FCS) measure.

Where applicable, within the document, MSG (Most Similar Group) data is published along with the crime and detection data. MSGs are calculated by the Home Office based on a number of socio-demographic & geographic variables which are strongly linked to crime/incident levels and the fear of crime. These groups provide a benchmark for comparison of crime and detection rates. Below the applicable crime tables there are three rows relating to MSG data. The first provides the MSG position for the OCU/Force for that crime type. The second displays OCU Actual, this is the number of offences per 1,000 population. The third row shows the MSG Average which is the total number of offences per 1,000 population divided by the number within the MSG. The same three rows are provided in relation to detection data, where data is provided in % figures rather than per 1,000 population.

Please note: iQuanta data is provisional. Within the profile, Hampshire data is published and compared against the MSG average. The other forces within Hampshire's MSG are: Avon and Somerset, Bedfordshire, Essex Hertfordshire, Kent, Sussex and Thames Valley. We are unable to provide figures from iQuanta for these forces, due to the provisional nature of this data.

This document is then taken forward by key stakeholders within the organisation to the Force Performance Review Group, where it is used to highlight areas of good performance and those for development.

Crime OCU contribute to the following areas within this document, either via investigation, forensic support, and/or review of these crimes: homicide, serious violent, sexual and acquisitive crime, class A drug seizures, domestic violence/hate crime, FIU form submissions, gun/knife crime (where this results in a major investigation/forensic support), SO assistance to TO, sickness and PDRs.

This is an evolving document and as such, the content may alter over time and any feedback would be welcomed by the Performance Review Team.

MSG Colour Key

Force	OCU
1-2	1-4
3-4	5-8
5-6	9-12
7-8	13-15

## Year to date and Monthly performance matrices

4-6

including notes on matrices terminology

## Policing Pledge Scorecard

7 Policing Pledge Scorecard

## Providing an excellent service

8	National public confidence measure	APACS 2.2	FCS	iQuanta
8	Local confidence survey data			Consultation & Research Team
8	Overall satisfaction	APACS 1.1	FCS	Consultation & Research Team
8	Being kept informed		FCS	Consultation & Research Team
9	Comparative satisfaction of minority ethnic groups	APACS 1.2		Consultation & Research Team
9	Satisfaction of victims of racist incidents	APACS 1.3		Consultation & Research Team
9	MSG user satisfaction data			Consultation & Research Team
9-10	Responding to victims of crime			Citizen Focus Inspector
10	Letters of appreciation, reports of incivility, expression of dissatisfaction			Professional Standards Department
11	Responding to public contact (inc call handling data)			Call Management

## An active presence in every neighbourhood

12	Rowdy and nuisance behaviour		FCS	Business Objects
12	Vehicle nuisance/Inappropriate vehicle use		FCS	Business Objects
13	Safer Neighbourhood Teams			CARM team & Personnel
14	Criminal damage		FCS	Business Objects

## Catching criminals and managing offenders

15	All crime and sanction detections		FCS	Business Objects
16	Serious violent crime, sanction detections and OBJT rate	APACS 5.1&6.1	FCS	Business Objects
17	Assault with less serious injury	APACS 5.3	FCS	Business Objects
18	Serious acquisitive crime, sanction detections and OBJT rate	APACS 5.2&6.2	FCS	Business Objects
19	Serious acquisitive crime breakdown			Business Objects
20	Gun and knife crime	APACS 5.5&5.6		Business Objects
20	Serious sexual crime OBJT rate	APACS 6.4		Criminal Justice Department
20	Murder offences incl domestic murders	APACS 5.4	FCS	Business Objects
20	FIU1 submission levels		FCS	Force Intelligence
20	PPO convictions	APACS 10.1	FCS	Criminal Justice Department
20	Class A drugs sanction detections		FCS	Business Objects
20	Drug seizures			Performance Review Team
20	Organised Crime Groups		FCS	7 OCU performance team

## Protecting our communities

21	Domestic violence and abuse arrest rate		FCS	Business Objects
21	Repeat incidents of domestic violence cases reviewed at MARAC	APACS 14.1		Special Investigations Department
21	Hate crime detection rate		FCS	Business Objects
22	Road traffic casualties	APACS 9.1	FCS	8 OCU performance team
23	Road traffic offences			8 OCU performance team

## Making the most of our resources

24	Police officer sickness	APACS 13.1	FCS	PRT - Delphi + Personnel - Staffing Figures
24	Police staff sickness	APACS 13.2		PRT - Delphi + Personnel - Staffing Figures
25	Overdue PDRs			Personnel
26	Budget spend	APACS 12.1	FCS	Finance
26	Efficiency savings		FCS	Finance
26	Specialist support to TO			7 and 8 OCU performance teams

## Equipping our team to deliver

27	Financial awareness training		FCS	Training Department
27	Preparing for frontline supervision		FCS	Training Department
27	Mobile data			Not yet available
27	Minority ethnic officer recruitment	APACS 3.1		Personnel
27	Female officer representation	APACS 3.2		Personnel

Year to date performance targets matrix

	Target	Actual	Central	Isle of Wight	North & East	Portsmouth	Southampton	Western
<b>Providing an excellent service</b>								
Confidence in local police	>51.3%	52.0%	This is a Force measure					
Overall satisfaction (data for rolling 12 months)	>65.0%	67.0%	69.0%	68.0%	67.0%	65.0%	62.0%	70.0%
<b>An active presence in every neighbourhood</b>								
Rowdy & nuisance behaviour	75107	60902	11452	3789	10917	10363	14402	9979
	OCU specific targets		13900	5349	14494	11449	17679	12235
Vehicle nuisance / inappropriate vehicle use	14971	9845	2300	698	2078	954	1920	1895
	OCU specific targets		3480	1001	3043	1290	2830	3327
Reduce criminal damage	34235	28609	6231	2075	5600	3785	5810	5108
	OCU specific targets		7548	2509	6579	4641	6634	6324
<b>Catching criminals &amp; managing offenders</b>								
All crime	162534	142365	29752	9009	27304	22933	28626	24741
	OCU specific targets		33121	10597	30772	25334	34091	28618
All crime SD	>25%	27.4%	25.1%	34.0%	27.8%	29.3%	27.2%	25.7%
	OCU specific targets		25.0%	30.0%	25.5%	25.5%	25.0%	25.0%
Serious violent crime	907	906	153	69	161	156	229	138
	OCU specific targets		172	63	144	182	235	111
Serious violent crime SD	>50%	54.6%	65.4%	52.2%	57.1%	46.2%	49.8%	58.7%
	OCU specific targets		57.0%	60.0%	56.0%	41.0%	45.0%	50.0%
Assault with less serious injury	13794	13785	2820	896	2228	2604	3143	2094
	OCU specific targets		2902	971	2445	1994	3250	2232
Serious sexual offences (OBTJ)	Data being developed		This is a Force measure					
Serious acquisitive crime	22397	18150	3657	712	3589	3071	3713	3408
	OCU specific targets		4091	918	4391	3942	4890	4165
Serious acquisitive crime SD	>15%	11.7%	9.8%	15.2%	11.0%	13.5%	12.6%	11.2%
Class A drugs SD	>400	515	25	26	218	56	112	78
	OCU specific targets		50.0	40.0	80.0	80.0	100.0	50.0
Organised crime group (OCG) - disruptions	>25	34	Owned by Crime OCU					

## Year to date performance targets matrix

	Target	Actual	Central	Isle of Wight	North & East	Portsmouth	Southampton	Western
<b>Protecting our communities</b>								
Domestic crimes arrest rate	>80%	80.2%	78.8%	80.44%	82.1%	81.8%	81.1%	77.6%
Hate crime SD	>45%	49.7%	48.4%	56.3%	52.7%	49.5%	49.2%	48.0%
Road traffic casualties	<813	803	Owned by Operations OCU					
<b>Making the most of our resources</b>								
Police officer sickness *	<7.5		No data available for March profile					
Police staff sickness *	<7.5		No data available for March profile					
Budget spend	92%	88%	90%	91%	91%	89%	91%	90%
Efficiency savings 2008-2011 (£m)	33	32.5	This is a Force measure					
<b>Equipping our staff to deliver</b>								
Financial awareness training			Data not suitable for matrix					
Preparing for frontline supervision			Data not suitable for matrix					
Mobile data			Data not suitable for matrix					
<b>Force Total - targets achieved</b>	<b>16</b>		<b>12</b>	<b>12</b>	<b>13</b>	<b>12</b>	<b>13</b>	<b>12</b>

### Notes to be read in conjunction with matrices

**All citizen focus data**

**OBTJ**

**Road traffic casualties**

**Budget spend**

**Efficiency savings**

**SD**

**Sickness data**

**OCU specific targets**

Based on "completely or very satisfied"

Offenders Brought To Justice - current data is to December 2009

All data until 28/02/2010

Data is always one month in arrears

For information on this target see page 26 of this Profile

Sanction detections

Force Actual = total for ALL officers/police staff - including those not in OCU

OCU specific targets are rounded to 2 decimal places; the actual figure may therefore seem the same but appear red due to this rounding

## Monthly performance targets matrix

This matrix is based on monthly data compared to Force targets

	Target	Actual	Central	Isle of Wight	North & East	Portsmouth	Southampton	Western
<b>An active presence in every neighbourhood</b>								
Rowdy & nuisance	6379	4265	747	215	813	752	1111	627
	OCU specific targets		1181	454	1231	972	1502	1039
Vehicle nuisance / inappropriate vehicle use	1272	748	179	46	168	71	138	146
	OCU specific targets		296	85	258	110	240	283
Reduce criminal damage	2908	2252	513	181	426	311	457	364
	OCU specific targets		641	213	559	394	563	537
<b>Catching criminals &amp; managing offenders</b>								
All crime	13804	11652	2489	730	2373	1856	2262	1942
	OCU specific targets		2813	900	2614	2152	2895	2431
All crime (SD)	25.0%	27.7%	27.0%	29.6%	27.9%	30.3%	27.4%	25.7%
	OCU specific targets		25.0%	30.0%	25.5%	25.5%	25.0%	25.0%
Serious violent crime	77	67	11	6	13	13	10	14
	OCU specific targets		14.6	5.3	12.2	15.5	19.9	9.5
Serious violent crime SD	>50%	73.1%	90.9%	66.7%	69.2%	61.5%	70.0%	78.6%
	OCU specific targets		57.0%	60.0%	56.0%	41.0%	45.0%	50.0%
Assault with less serious injury	1172	1129	219	85	185	226	247	167
	OCU specific targets		246	82	208	169	276	190
Serious acquisitive crime	1902	1418	288	47	316	226	306	235
	OCU specific targets		347	78	373	335	415	354
Serious acquisitive crime SD	>15%	12.1%	10.4%	10.6%	9.8%	11.5%	16.7%	11.9%
Serious sexual offences (OBTJ)	Data being developed		This is a Force measure					
Class A drugs SD	>34	17	2	1	5	4	5	0
<b>Protecting our communities</b>								
Domestic crimes arrest rate	>80%	79.1%	84.9%	86.3%	78.6%	80.3%	71.8%	76.9%
Hate crime SD	>45%	55.7%	76.9%	75.0%	37.5%	58.3%	56.0%	46.7%
<b>Making the most of our resources</b>								
Police officer sickness	<0.625		No data available for March profile					
Police staff sickness	<0.625		No data available for March profile					
<b>Force Total - targets achieved</b>	<b>10</b>		<b>11</b>	<b>8</b>	<b>8</b>	<b>10</b>	<b>11</b>	<b>9</b>

## Hampshire Constabulary Policing Pledge Scorecard

Pledge	YTD 2009/2010
Percentage of respondents tending to 'agree' or 'strongly agree' that: 'The police and local council are dealing with the anti-social behaviour and crime issues that matter in this area'	52.0%
<b>Pledge 1 - Treat people fairly with dignity and respect, ensuring they have fair access to our service</b>	
Percentage of respondents answering 'strongly agree' or 'tend to agree' when asked 'The police in this area treat everyone fairly regardless of who they are'	67.6%
<b>Pledge 2 - Help promote our dedicated Safer Neighbourhoods Teams to the local community, including where they contact them and how to work with them</b>	
Measure under development - dip sampling of media/communications to be carried out	
<b>Pledge 3 - Ensure we are visible in our neighbourhoods at times when we will be most effective and when communities need us most. Safer Neighbourhoods teams will spend at least 80% of their time visibly working in neighbourhood priorities</b>	
Safer Neighbourhood Team abstractions	See
Safer Neighbourhood Team vacancy rate	In p
<b>Pledge 4 - Respond to every message directed to every Safer Neighbourhood Team within 24 hours and, where necessary, provide more detailed response as soon as we can</b>	
Measure under development - dip sampling of media/communications to be carried out	
<b>Pledge 5 - Aim to answer 999 calls within 10 seconds, deploy to emergencies immediately and give an estimated time to provide assistance to callers as safely and quickly as possible, aiming to get to them within 15 minutes</b>	
No. of 999 calls	250,284
%age of 999 calls answered within 10 seconds	93.4%
%age of Grade 1 calls attended within 15 minutes	89.6%
<b>Pledge 6 - Answer all non emergency calls promptly. If attendance is needed, agree with the caller an acceptable time to attend</b>	
No of non emergency calls	757,934
%age of non emergency calls answered within 10 seconds	89.4%
Scheduling pilot permanent reporting in progress	See
<b>Pledge 7 - Create opportunities to meet them at least once a month to agree or update neighbourhood priorities. Arrange arrangements for meetings, street briefings, mobile police station visits and similar by keeping beat web pages up to date and online postcode search to our communities so that they can be kept up to date</b>	
Measure under development - dip sampling of media/communications to be carried out	
<b>Pledge 8 - Provide monthly updates on what action we and our partners are taking to make neighbourhoods safer and how the force is performing</b>	
Regular neighbourhood performance data is published on the Internet	5 times
Measure under development - other monitoring to be carried out	
<b>Pledge 9 - Agree with victims of crime how often they would like to be kept informed of progress in their case and ensure that victims have the right to be kept informed at least every month if they wish and for as long as is reasonable</b>	
Satisfaction of victims with respect to being kept informed (very / fairly satisfied)	58.0%
% where the victim has been updated on a monthly basis	97.0%
Compliance with victims contact as part of the Victims' Code	See
<b>Pledge 10 - Acknowledge any dissatisfaction with the service brought to our attention within 24 hours of it being reported and will ensure that appropriate steps are taken to resolve concerns</b>	
Reports of incivility	155

**British Crime Survey Confidence Data**

SPI 2.2 Force Target

This data is updated by iQuanta approximately every quarter

**National Public Confidence Measure**

Sep-09

Hampshire	<b>52.0%</b>
MSG Position	<b>3 of 8</b>
MSG average	50.7%

This data is based on 'The police and local council are dealing with the anti-social behaviour and crime issues that matter in this area'

The Home Office has set a target to achieve a 12% improvement by 2012 against the baseline of 47.3%

This year's required improvement is 4%

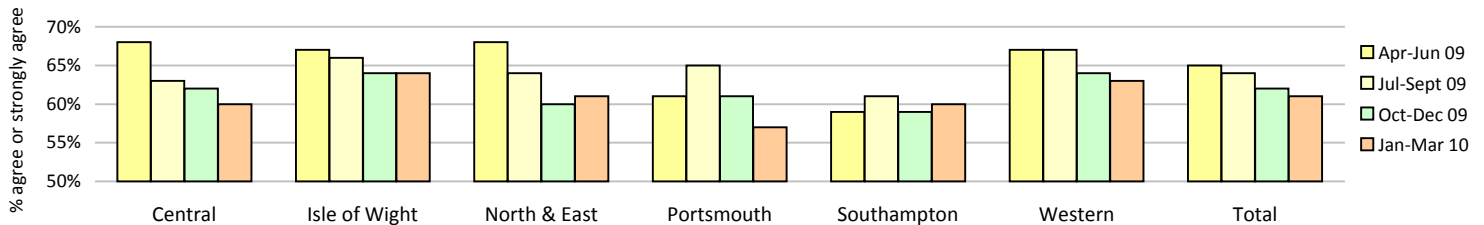
**Local Confidence Survey Data**

Figures relate to the percentage of respondents who agree or strongly agree with the question.

Hampshire's local surveys have a confidence level of +/-4%. This means that changes of less than 4% may not reflect a real change in performance.

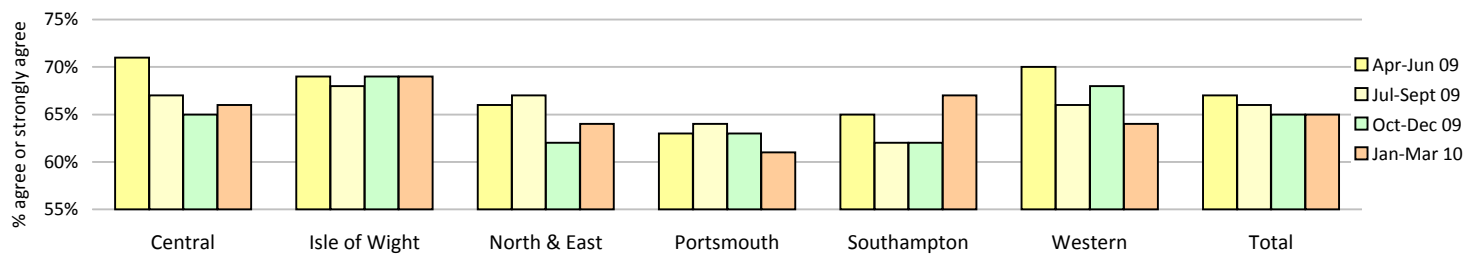
**The police and local council are dealing with the anti-social behaviour and crime issues that matter in this area**

	Central	Isle of Wight	North & East	Portsmouth	Southampton	Western	Total	No. Surveys
April - June 2009	68%	67%	68%	61%	59%	67%	<b>65%</b>	3591
July - September 2009	63%	66%	64%	65%	61%	67%	<b>64%</b>	8128
October - December 2009	62%	64%	60%	61%	59%	64%	<b>62%</b>	3822
January - March 2010	60%	64%	61%	57%	60%	63%	<b>61%</b>	3708



**The police are dealing with the things that matter locally**

	Central	Isle of Wight	North & East	Portsmouth	Southampton	Western	Total	No. Surveys
April - June 2009	71%	69%	66%	63%	65%	70%	<b>67%</b>	3591
July - September 2009	67%	68%	67%	64%	62%	66%	<b>66%</b>	8128
October - December 2009	65%	69%	62%	63%	62%	68%	<b>65%</b>	3822
January - March 2010	66%	69%	64%	61%	67%	64%	<b>65%</b>	3708



**Overall satisfaction (user satisfaction survey results)**

SPI 1.1 Force Target

Rolling 12 months data relates to: Apr 09 - Mar 10; rolling 3 months data relates to Jan 10 - Mar 10

Overall satisfaction includes burglary, vehicle crime, violent crime and minor injury RTCs

Target 65%	Central	Isle of Wight	North & East	Portsmouth	Southampton	Western	Total	No. Surveys
Rolling 12 months	69%	68%	67%	65%	<b>62%</b>	70%	<b>67%</b>	8567
Rolling 3 months	73%	71%	73%	67%	67%	79%	<b>72%</b>	1952

**Being kept informed (user satisfaction survey results)**

Rolling 12 months data relates to: Apr 09 - Mar 10; rolling 3 months data relates to Jan 10 - Mar 10

Being kept informed includes burglary, vehicle crime, violent crime and minor injury RTCs

	Central	Isle of Wight	North & East	Portsmouth	Southampton	Western	Total	No. Surveys
Rolling 12 months	60%	61%	56%	55%	54%	62%	<b>58%</b>	8283
Rolling 3 months	65%	65%	58%	57%	60%	70%	<b>62%</b>	1904

**Comparative satisfaction of minority ethnic groups**

SPI 1.3

Data relates to interviews which took place Apr 09 - Mar 2010

These figures are for overall satisfaction for burglary, vehicle crime, violent crime, minor injury RTCs and racist incidents

	Completely and very satisfied	Completely, very and fairly satisfied
White	67.5%	84.4%
Minority Ethnic	56.1%	78.7%

**Satisfaction of victims of racist incidents**

SPI 1.2

Rolling 12 months data relates to: Apr 09 - Mar 10, these will be updated quarterly

Racist incident overall satisfaction = % completely or very satisfied

	Central	Isle of Wight	North & East	Portsmouth	Southampton	Western	Total
%	52%	64%	56%	67%	53%	61%	58%
Number of surveys	33	11	25	45	57	23	194

**MSG information for user satisfaction**

iQuanta data for MSG for the 12 months up to December 09 (iQuanta calculate satisfaction % based on those responding that they are completely, very or fairly satisfied)

	Previous MSG position	Current MSG position	Change		Previous MSG position	Current MSG position	Change
<u>Vehicle crime</u>				<u>Burglary</u>			
Ease of contact	3/8	4/8	↓	Ease of contact	4/8	4/8	↔
Actions taken	4/8	4/8	↔	Actions taken	6/8	6/8	↔
Follow up	4/8	4/8	↔	Follow up	1/8	1/8	↔
Treatment	5/8	5/8	↔	Treatment	4/8	7/8	↓
Whole Experience	4/8	4/8	↔	Whole Experience	3/8	3/8	↔
<u>Violent crime</u>				<u>RTC (minor injury)</u>			
Ease of contact	2/8	4/8	↓	Ease of contact	3/8	1/8	↑
Actions taken	3/8	3/8	↔	Actions taken	2/8	2/8	↔
Follow up	5/8	5/8	↔	Follow up	2/8	2/8	↔
Treatment	3/8	3/8	↔	Treatment	3/8	2/8	↑
Whole Experience	2/8	4/8	↓	Whole Experience	3/8	2/8	↑
<u>All users (excluding racist incidents)</u>							
Ease of contact	2/8	1/8	↑				
Actions taken	4/8	4/8	↔				
Follow up	3/8	2/8	↑				
Treatment	4/8	4/8	↔				
Whole Experience	3/8	4/8	↓				

**Responding to victims of crime**

Pledge Point 9

Summary results of Dip-sample Victim Code Compliance checks

(latest month for available data followed by YTD)

% where victim was informed within 5 days of an investigation being closed

	Central	Isle of Wight	North & East	Portsmouth	Southampton	Western	Crime	Force
February-2010	95%	100%	100%	100%	100%	100%	100%	99%
YTD	98%	100%	100%	100%	100%	99%	100%	99%

% where the victim has been updated on a monthly basis (if applicable)

	Central	Isle of Wight	North & East	Portsmouth	Southampton	Western	Crime	Force
February-2010	90%	100%	100%	100%	100%	100%	94%	98%
YTD	99%	96%	92%	100%	100%	100%	98%	97%

% where the victim was notified upon filing (if applicable)

	Central	Isle of Wight	North & East	Portsmouth	Southampton	Western	Crime	Force
February-2010	95%	100%	95%	100%	100%	100%	94%	97%
YTD	97%	98%	96%	100%	100%	100%	99%	98%

Note: Victim Code Compliance data is published one month in arrears

Note: Absence of data for Operations OCU - the only crime investigations that are retained for resolution by 8 OCU officers are public order or drug offences where the victim is 'The State'. Other crimes are transferred to 'TO' OCUs for any further investigation required. Road traffic collisions resulting in death could be included but this is a small sample. The option to dip-sample other RTCs (minor and serious injury) for contact with injured or aggrieved parties could be used but these are not within the requirements of the Victims' Code. This would only include RPU in the sample and not other 8 OCU teams

## Providing an excellent service

### Victim support status for crimes

YTD to March 2010	Central	Isle of Wight	North & East	Portsmouth	Southampton	Western	Total	Total %
Victim informed of VSS accepted	2925	784	2876	2115	3961	2651	15312	10.76%
Victim informed of VSS declined	19143	5399	17199	13207	18190	14913	88051	61.85%
VSS aware	711	171	540	303	357	1079	3161	2.22%
Victimless crime	6961	2563	6687	6839	6030	6088	35168	24.70%
Not stated	11	92	1	469	88	9	670	0.47%
<b>Total crimes</b>	<b>29751</b>	<b>9009</b>	<b>27303</b>	<b>22933</b>	<b>28626</b>	<b>24740</b>	<b>142362</b>	<b>N/A</b>
% referred	12.22%	10.60%	12.51%	10.54%	15.08%	15.08%	12.98%	N/A

Month of March 2010	Central	Isle of Wight	North & East	Portsmouth	Southampton	Western	Total	Total %
Victim informed of VSS accepted	304	85	266	207	411	259	1532	13.15%
Victim informed of VSS declined	1539	443	1478	970	1351	1084	6865	58.92%
VSS aware	39	15	39	28	29	89	239	2.05%
Victimless crime	605	171	589	562	430	501	2858	24.53%
Not stated	2	16	1	89	41	9	158	1.36%
<b>Total crimes</b>	<b>2489</b>	<b>730</b>	<b>2373</b>	<b>1856</b>	<b>2262</b>	<b>1942</b>	<b>11652</b>	<b>N/A</b>
% referred	13.78%	13.70%	12.85%	12.66%	19.45%	17.92%	15.20%	N/A

Letters of appreciation	Central	Isle of Wight	North & East	Portsmouth	Southampton	Western	Crime	Operations	Other	Total
April 2009	9	5	13	27	0	5	5	13	11	88
May 2009	10	11	13	0	3	11	2	6	31	87
June 2009	9	13	12	3	7	11	15	3	19	92
July 2009	21	7	24	10	3	7	11	2	19	104
August 2009	21	11	13	6	4	11	13	41	23	143
September 2009	19	9	8	10	1	7	17	6	6	83
October 2009	9	6	12	6	10	7	0	11	0	61
November 2009	13	5	15	10	1	9	0	7	3	63
December 2009	7	4	18	0	21	1	0	6	0	57
January 2010	9	6	16	0	18	0	7	9	7	72
February 2010	15	3	19	0	20	5	11	5	11	89
<b>Total</b>	<b>142</b>	<b>80</b>	<b>163</b>	<b>72</b>	<b>88</b>	<b>74</b>	<b>81</b>	<b>109</b>	<b>130</b>	<b>939</b>

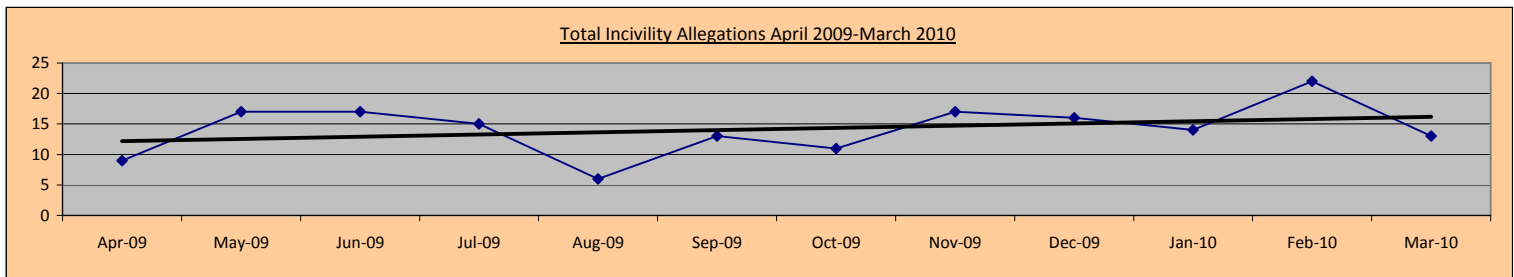
Note: These figures are published one month in arrears

Reports of incivility	Central	Isle of Wight	North & East	Portsmouth	Southampton	Western	Crime	Operations	Other	Total
April 2009	2	3	1	3	0	2	0	6	0	17
May 2009	2	4	5	1	2	3	0	1	1	19
June 2009	7	1	1	0	0	2	0	2	0	13
July 2009	2	3	0	3	1	2	0	2	1	14
August 2009	0	1	2	5	0	0	0	0	0	8
September 2009	0	1	2	2	2	1	0	1	0	9
October 2009	1	0	1	0	3	0	0	1	1	7
November 2009	1	1	1	2	1	2	0	4	0	12
December 2009	4	2	0	1	2	2	1	0	0	12
January 2010	4	0	2	1	0	1	0	2	1	11
February 2010	1	1	4	2	5	3	0	3	1	20
March 2010	4	0	1	1	1	1	1	2	2	13
<b>Total</b>	<b>28</b>	<b>17</b>	<b>20</b>	<b>21</b>	<b>17</b>	<b>19</b>	<b>2</b>	<b>24</b>	<b>7</b>	<b>155</b>

NOTE: OCU complaints totals may include complaints regarding officers who are serving within the area but are not located at that OCU

NOTE: Data/figures may change due to additional or new information and there may be multiple allegations per complaint

By month	May 09	Jun 09	Jul 09	Aug 09	Sep 09	Oct 09	Nov 09	Dec 09	Jan 10	Feb 10	Mar 10
Incivility	17	17	15	6	13	11	17	16	14	22	13



### Allegations and their resolutions

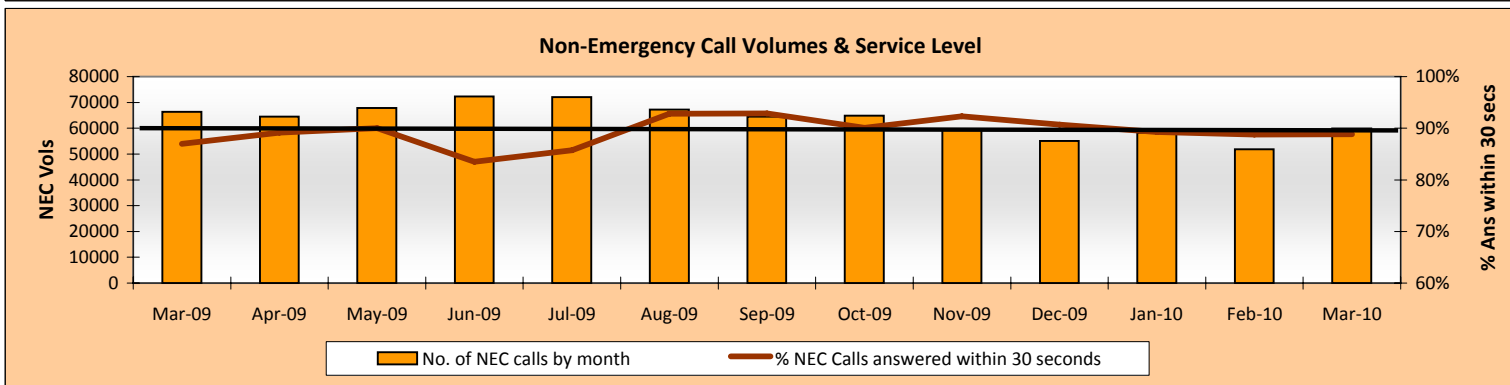
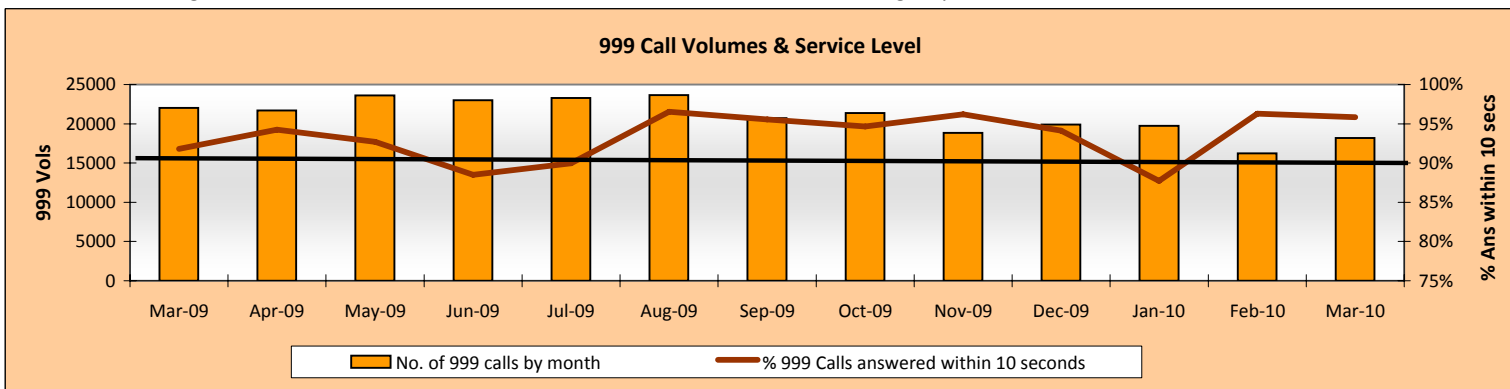
Data for March 2010

Locally resolved by OCU	86
Locally resolved by PSD	10
Withdrawn	17
Dispensed by IPCC	1
Unsubstantiated	66
Substantiated	14
<b>Total</b>	<b>194</b>

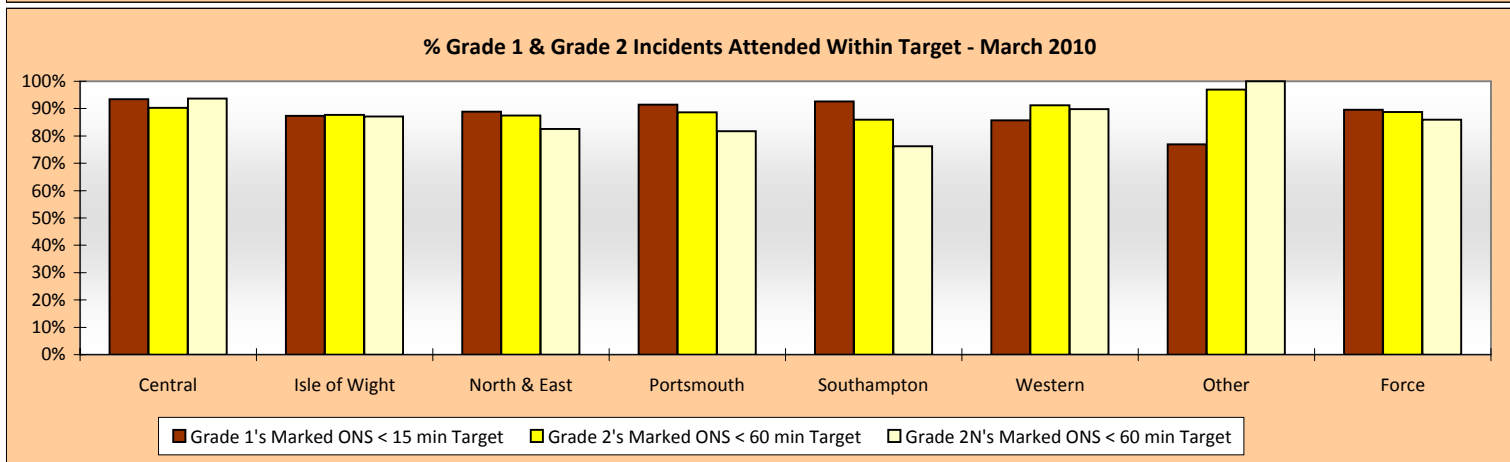
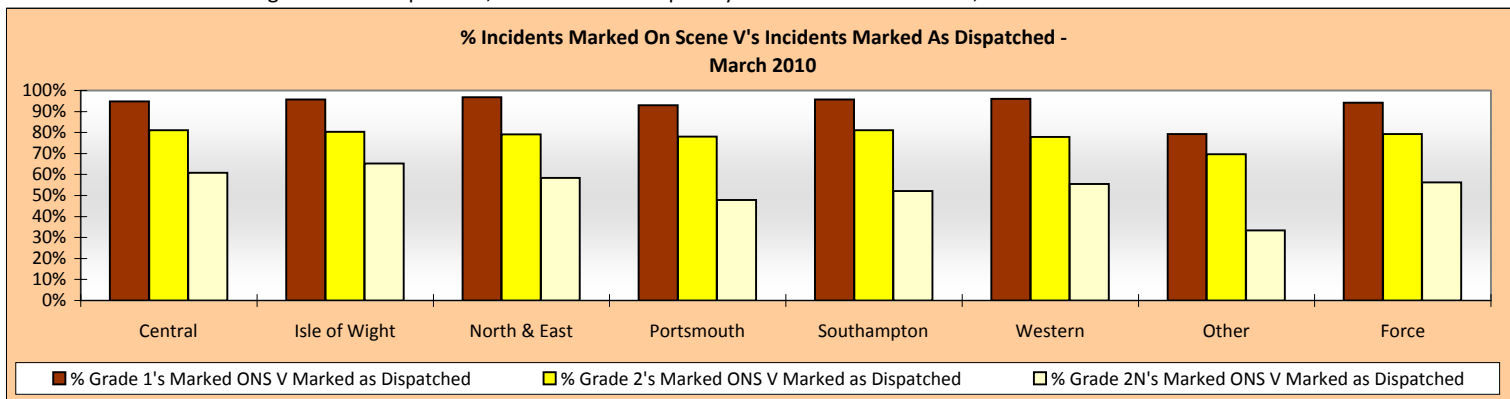
# Providing an excellent service

## Responding to public contact

**Call Volumes:** Target is to answer 90% of 999 calls within 10 seconds and 90% of Non-Emergency calls within 30 seconds



**Officers Attended Within Target:** This is the time from an incident being created to the 1st Officer being marked on scene on Altaris. The % of Officers attending within target is based on the number of incidents marked on scene within target vs. the number of incidents marked on scene. If incident is marked as having an officer dispatched, but is then subsequently not marked as On Scene, these incidents are excluded from the % Attendance.



## Use of Scheduled Appointments

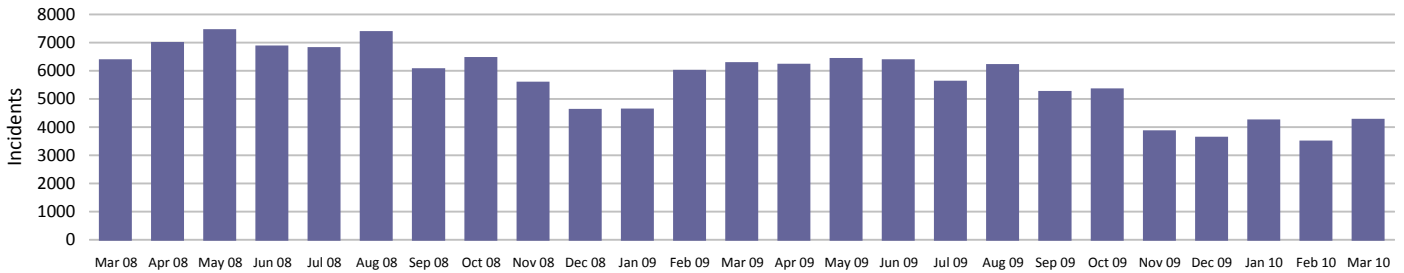
March 2010	Available Slots	Withdrawn by OCU	% Withdrawn	No. Actual Available	Appoint.'s Scheduled	Appoint.'s Used
Central	622	52	8%	570	247	43%
Isle of Wight	145	9	6%	136	126	93%
North & East	302	50	17%	252	172	68%
Portsmouth	200	21	11%	179	122	68%
Southampton	554	17	3%	537	121	23%
Western	383	132	34%	251	124	49%
<b>Force</b>	<b>2,206</b>	<b>281</b>	<b>13%</b>	<b>1,925</b>	<b>912</b>	<b>47%</b>

# An active presence in every neighbourhood

## Rowdy & nuisance behaviour

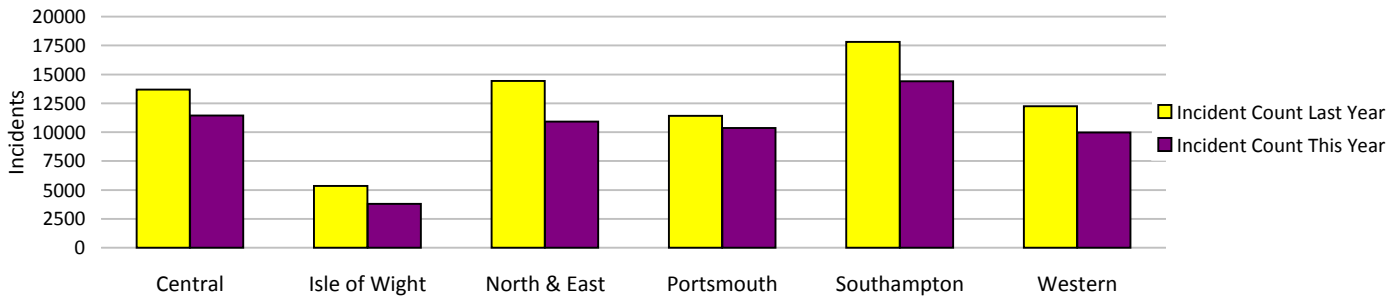
Force Target

This year the decision has been made to use RMS as the source of this data, as opposed to the NSIR return data (the figures published in the 2008/2009 Force Performance Summary used the NSIR data)



Incidents	Central	Isle of Wight	North & East	Portsmouth	Southampton	Western	Total
<b>YTD Incidents</b>	11452	3789	10917	10363	14402	9979	<b>60902</b>
YTD Target	13900	5349	14494	11449	17679	12235	<b>75107</b>
<b>YTD 08/09 Incidents</b>	13691	5334	14435	11412	17803	12232	<b>74907</b>
This month	747	215	813	752	1111	627	<b>4265</b>
% change from 08/09	-16.35%	-28.97%	-24.37%	-9.19%	-19.10%	-18.42%	<b>-18.70%</b>

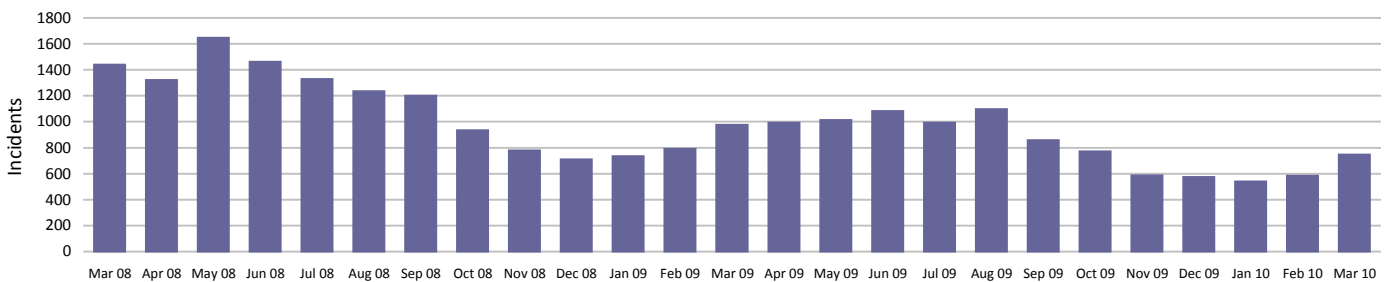
Rowdy & nuisance behaviour relates to occurrence types: Inappropriate use of Fireworks, Rowdy & Inconsiderate, Substance Misuse and Street Drinking



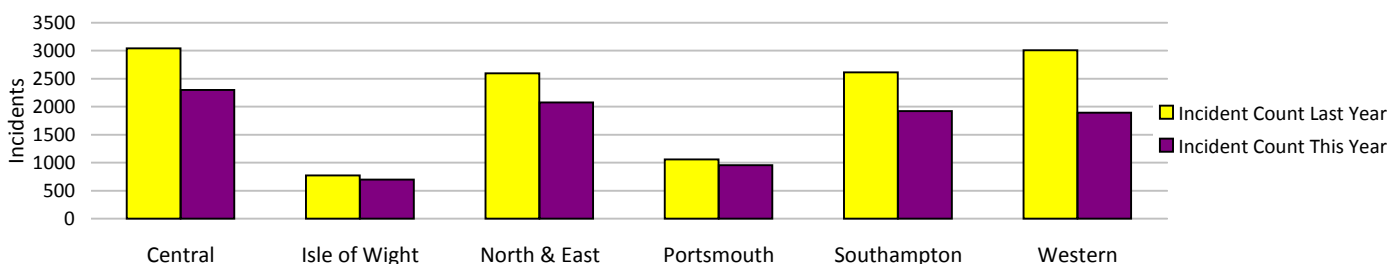
## Vehicle nuisance/inappropriate vehicle use

Force Target

This year the decision has been made to use RMS as the source of this data, as opposed to the NSIR return data (the figures published in the 2008/2009 Force Performance Summary used the NSIR data)



Incidents	Central	Isle of Wight	North & East	Portsmouth	Southampton	Western	Total
<b>YTD Incidents</b>	2300	698	2078	954	1920	1895	<b>9845</b>
YTD Target	3480	1001	3043	1290	2830	3327	<b>14971</b>
<b>YTD 08/09 Incidents</b>	3045	770	2595	1058	2611	3009	<b>13088</b>
This month	179	46	168	71	138	146	<b>748</b>
% change from 08/09	-24.47%	-9.35%	-19.92%	-9.83%	-26.46%	-37.02%	<b>-24.78%</b>



Note: MSG data is always published a month in arrears.

For an explanation of this data, refer to the Summary on page 2

March 2010

## An active presence in every neighbourhood

### Safer Neighbourhood Teams (SNT)

Policing pledge 3

Abstractions	Central	Isle of Wight	North & East	Portsmouth	Southampton	Western	Total
April 2009	3.02%	2.32%	3.16%	3.80%	1.63%	3.30%	
May 2009	3.33%	2.95%	2.98%	3.01%	1.88%	2.83%	<b>2.86%</b>
June 2009	3.16%	1.15%	2.54%	4.62%	2.77%	3.40%	<b>3.05%</b>
July 2009	3.44%	2.32%	4.02%	4.92%	3.24%	<b>6.46%</b>	<b>4.16%</b>
August 2009	<b>6.66%</b>	<b>16.17%</b>	<b>11.25%</b>	3.13%	2.08%	3.37%	<b>6.40%</b>
September 2009	3.99%	4.03%	4.41%	1.00%	3.16%	3.64%	<b>3.48%</b>
October 2009	2.74%	1.10%	4.80%	0.86%	1.43%	2.19%	<b>2.44%</b>
November 2009	2.27%	0.50%	3.71%	0.36%	2.53%	1.84%	<b>2.12%</b>
December 2009	<b>5.48%</b>	4.33%	4.13%	0.65%	2.09%	1.51%	<b>3.18%</b>
January 2010	1.76%	1.76%	2.58%	0.37%	1.70%	2.78%	<b>1.95%</b>
February 2010	1.40%	1.13%	2.33%	1.87%	2.03%	2.49%	<b>1.94%</b>
March 2010	1.91%	4.47%	1.98%	1.61%	5.00%	2.90%	<b>2.82%</b>

Target = NPT visible & accessible at least 80% of time (maximum 5% abstractions)

In August 2009 a review of Abstraction data was undertaken to ensure a consistent approach was used across the Force. Prior to this date individual OCUs used slightly differing methodology therefore it is not possible to compare the data for April - July with data from August onwards, or to compare the data for individual OCU's with one another prior to August.

### Safer Neighbourhood Team Personnel

	Inspector	Sergeant	Constable	PCSO	Total
Central	10	23	87	80	<b>200</b>
IOW	1	9	28	28	<b>66</b>
North and East	11	16	78	68	<b>173</b>
Portsmouth	4	9	47	50	<b>110</b>
Southampton	5	13	61	59	<b>138</b>
Western	7	18	79	66	<b>170</b>
<b>Total</b>	<b>38</b>	<b>88</b>	<b>380</b>	<b>351</b>	<b>857</b>

#### SNT strength by OCU - Police

	Central	Isle of Wight	North & East	Portsmouth	Southampton	Western
Strength	112.3	35.7	100.5	57.5	77	99.6

#### SNT establishment and strength by OCU - PCSOs

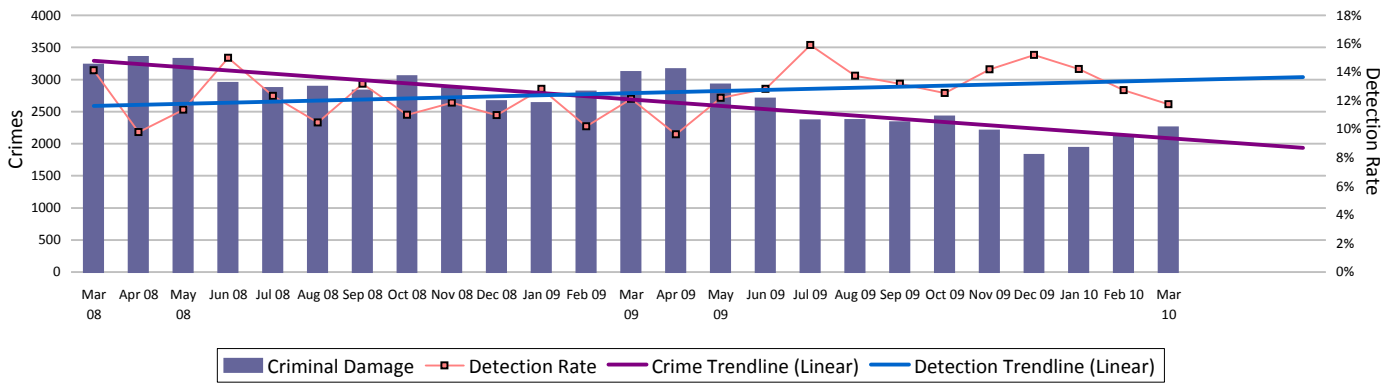
	Central	Isle of Wight	North & East	Portsmouth	Southampton	Western
Establishment	74	28	67	50	59	59
Strength	80	27.12	67.2	49.12	58.69	64.61
Vacancies	-6	0.88	-0.2	0.88	0.31	-5.61

Note: Personnel Planning are no longer able to provide 'length of service' information due to the implementation of the new organisation structure into Delphi. This has meant that all Staff and Police Officers have a position start date of 8 July 2009

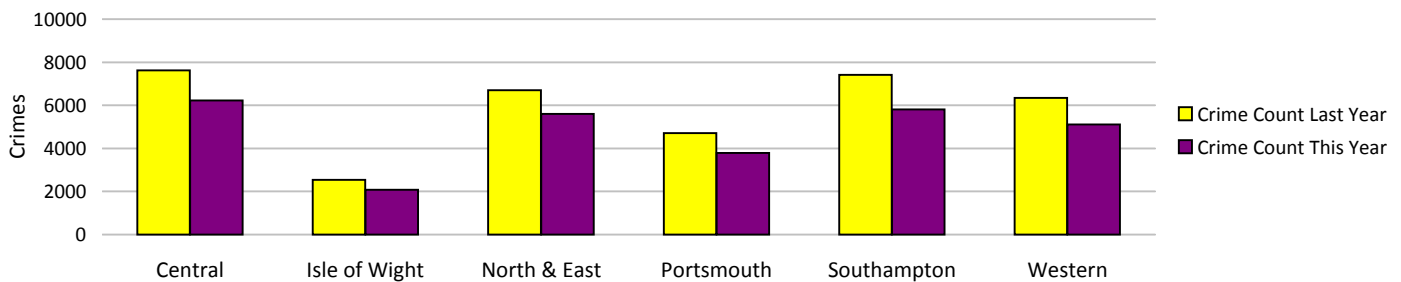
# An active presence in every neighbourhood

## Criminal damage

Force Target

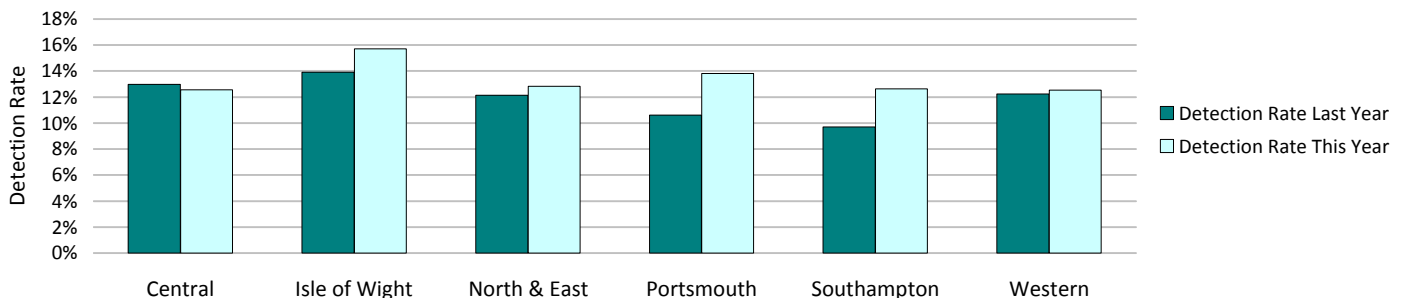


Crimes	Central	Isle of Wight	North & East	Portsmouth	Southampton	Western	Total
<b>YTD Crimes</b>	6231	2075	5600	3785	5810	5108	<b>28609</b>
YTD Target	7548	2509	6579	4641	6634	6324	<b>34235</b>
<b>YTD 08/09 Crimes</b>	7626	2544	6707	4716	7410	6344	<b>35347</b>
This month	513	181	426	311	457	364	<b>2252</b>
% change from 08/09	-18.29%	-18.44%	-16.51%	-19.74%	-21.59%	-19.48%	<b>-19.06%</b>
MSG position	12 of 15	8 of 15	8 of 15	13 of 15	15 of 15	13 of 15	<b>8 of 8</b>
OCU actual	2.658	2.959	2.543	4.216	5.29	2.721	<b>3.167</b>
MSG average	2.519	3.008	2.48	3.597	3.885	2.541	<b>2.821</b>



Detections	Central	Isle of Wight	North & East	Portsmouth	Southampton	Western	Total
<b>YTD Detection Rate</b>	12.55%	15.71%	12.84%	13.82%	12.63%	12.53%	<b>13.02%</b>
This month	8.97%	14.92%	9.15%	17.36%	11.82%	12.36%	<b>11.77%</b>
<b>YTD 08/09 Detections</b>	12.97%	13.92%	12.14%	10.62%	9.69%	12.23%	<b>11.75%</b>
MSG position	7 of 15	7 of 15	10 of 15	4 of 15	7 of 15	10 of 15	<b>7 of 8</b>
OCU actual	13.12%	15.49%	12.99%	13.31%	12.21%	12.44%	<b>12.98%</b>
MSG average	13.48%	14.31%	14.11%	11.69%	12.52%	13.54%	<b>14.31%</b>

Note: Detections refer to Sanction Detections ONLY



Note: MSG data is always published a month in arrears.

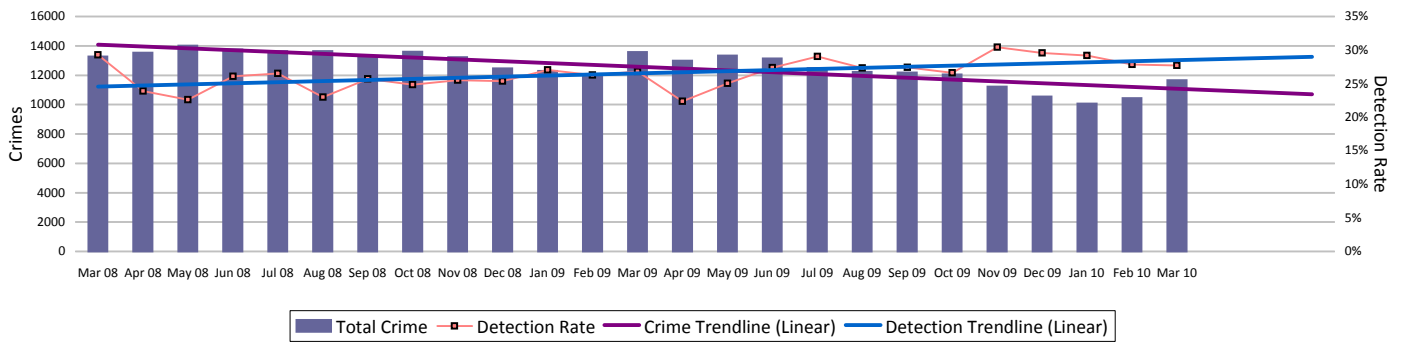
For an explanation of this data, refer to the Summary on page 2

March 2010

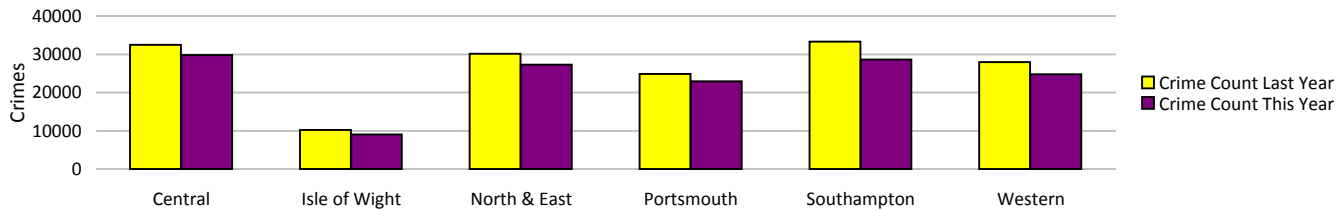
# Catching criminals and managing offenders

## All crime

Force Target



Crimes	Central	Isle of Wight	North & East	Portsmouth	Southampton	Western	Total
<b>YTD Crimes</b>	29752	9009	27304	22933	28626	24741	<b>142365</b>
YTD Target	33121	10597	30772	25334	34091	28618	<b>162534</b>
<b>YTD 08/09 Crimes</b>	32473	10245	30102	24868	33303	27910	<b>158901</b>
This month	2489	730	2373	1856	2262	1942	<b>11652</b>
% change from 08/09	-8.38%	-12.06%	-9.30%	-7.78%	-14.04%	-11.35%	<b>-10.41%</b>
MSG position	10 of 15	3 of 15	10 of 15	12 of 15	<b>13 of 15</b>	11 of 15	<b>6 of 8</b>
OCU actual	14.259	12.315	14.06	25.424	27.902	13.329	<b>16.78</b>
MSG average	13.829	14.017	13.37	21.369	22.787	13.04	<b>15.694</b>



Detections	Central	Isle of Wight	North & East	Portsmouth	Southampton	Western	Total
YTD Detection Rate	25.11%	33.98%	27.76%	29.29%	27.15%	25.73%	<b>27.37%</b>
This month	26.96%	29.59%	27.86%	30.28%	27.41%	25.75%	<b>27.72%</b>
<b>YTD 08/09 Detections</b>	24.09%	33.07%	26.10%	25.64%	24.16%	23.87%	<b>25.27%</b>
Detection Targets	25.00%	30.00%	25.50%	25.50%	25.00%	25.00%	<b>25.00%</b>
MSG position	11 of 15	4 of 15	9 of 15	2 of 15	<b>6 of 15</b>	9 of 15	<b>5 of 8</b>
OCU actual	24.54%	34.54%	27.74%	28.91%	26.85%	25.57%	<b>27.13%</b>
MSG average	27.81%	29.70%	28.71%	25.40%	26.60%	26.82%	<b>28.72%</b>

Note: Detections refer to Sanction Detections ONLY

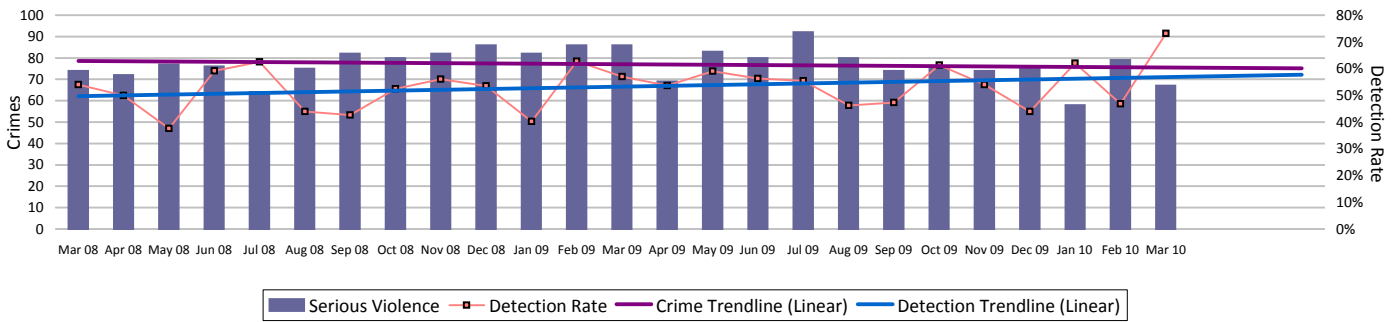


# Catching criminals and managing offenders

## Serious violent crime

SPI 5.1 Force Target

Serious violent crime consists of crimsec codes 1, 2, 4.1-4.4, 4.6, 4.8, 5A, 5B, 5C, 8F, 8H and 37.1



Crimes	Central	Isle of Wight	North & East	Portsmouth	Southampton	Western	Total
<b>YTD Crimes</b>	153	69	161	156	229	138	906
YTD Target	172	63	144	182	235	111	907
<b>YTD 08/09 Crimes</b>	175	62	147	191	221	152	948
This month	11	6	13	13	10	14	67
% change from 08/09	-12.57%	11.29%	9.52%	-18.32%	3.62%	-9.21%	-4.43%
MSG position	8 of 15	7 of 15	11 of 15	7 of 15	5 of 15	13 of 15	6 of 8
OCU actual	0.077	0.107	0.085	0.195	0.192	0.097	0.113
MSG average	0.09	0.114	0.073	0.254	0.268	0.077	0.107



Detections	Central	Isle of Wight	North & East	Portsmouth	Southampton	Western	Total
<b>YTD Detection Rate</b>	65.36%	52.17%	57.14%	46.15%	49.78%	58.70%	54.64%
This month	90.91%	66.67%	69.23%	61.54%	70.00%	78.57%	73.13%
<b>YTD 08/09 Detections</b>	56.57%	70.97%	55.10%	42.41%	47.96%	50.66%	51.48%
Detection Targets	57.00%	60.00%	56.00%	41.00%	45.00%	50.00%	50.00%
MSG position	3 of 15	7 of 15	6 of 15	6 of 15	3 of 15	9 of 15	3 of 8
OCU actual	63.70%	52.11%	58.28%	43.37%	50.22%	57.64%	53.86%
MSG average	56.88%	52.49%	56.70%	41.94%	43.48%	59.64%	48.04%

Note: Detections refer to Sanction Detections ONLY



## Serious Violent offences OBJ

SPI 6.1

Up to and including Dec. 2009

	Recorded Crime		Total OBJs		Hampshire		Rolling Average	
	Month	RA	Month	RA	Month	RA	MSG	E&W
Attempted murder	0	7	0	1	0.0%	14.3%	25.5%	21.0%
Death by aggravated vehicle taking	0	0	0	0	0.0%	0.0%	0.0%	108.3%
Causing death by dangerous driving etc	0	12	0	13	0.0%	108.3%	82.6%	78.2%
Homicide and child destruction	2	20	0	14	0.0%	70.0%	94.3%	102.4%
Wounding and GBH without intent	73	903	12	229	16.4%	25.4%	22.7%	20.0%

	Convictions	Caution	TICs	Cannabis Warning	PNDs
	Rolling 12 month Average				
Attempted murder	1	0	0	0	0
Death by aggravated vehicle taking	0	0	0	0	0
Causing death by dangerous driving etc	13	0	0	0	0
Homicide and child destruction	14	0	0	0	0
Wounding and GBH without intent	218	11	0	0	0

RA = Rolling Annual  
E&W = England & Wales

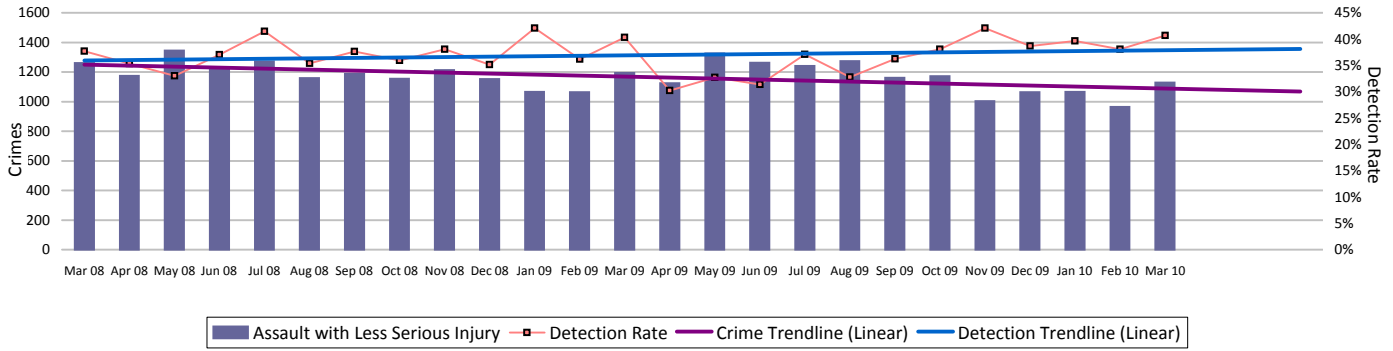
Note: MSG data is always published a month in arrears. For an explanation of this data, refer to the Summary on page 2

# Catching criminals and managing offenders

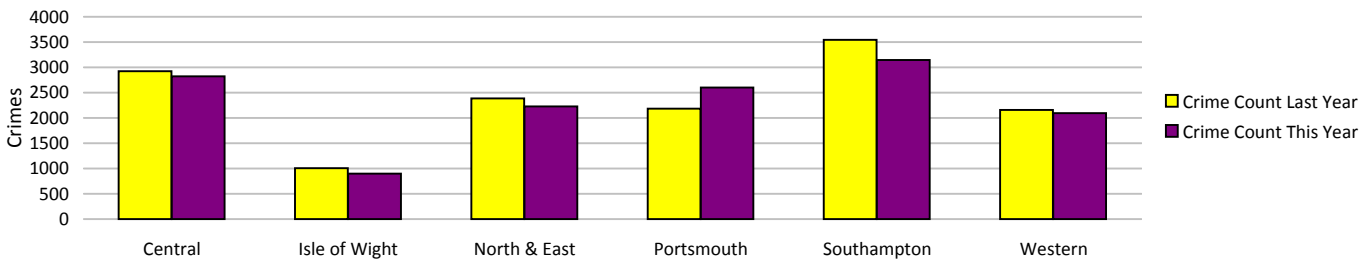
## Assault with less serious injury

SPI 5.3 Force Target

Assault with less serious injury consists of crimsec codes 8G and 8J

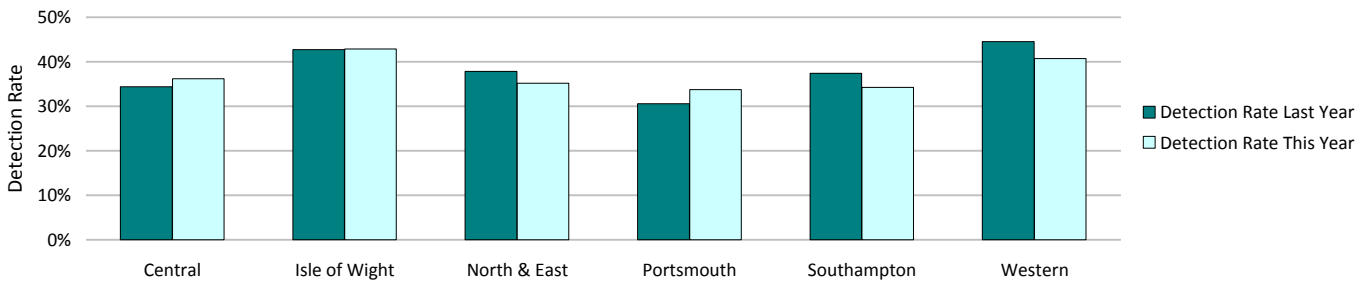


Crimes	Central	Isle of Wight	North & East	Portsmouth	Southampton	Western	Total
<b>YTD Crimes</b>	2820	896	2228	<b>2604</b>	3143	2094	<b>13785</b>
YTD Target	2902	971	2445	1994	3250	2232	<b>13794</b>
<b>YTD 08/09 Crimes</b>	2927	1007	2388	2182	3543	2159	<b>14206</b>
This month	219	85	185	226	247	167	<b>1129</b>
% change from 08/09	-3.66%	-11.02%	-6.70%	19.34%	-11.29%	-3.01%	<b>-2.96%</b>
MSG position	<b>13 of 15</b>	<b>7 of 15</b>	<b>11 of 15</b>	<b>14 of 15</b>	<b>13 of 15</b>	<b>9 of 15</b>	<b>8 of 8</b>
OCU actual	1.474	1.291	1.119	3.131	2.993	1.125	<b>1.67</b>
MSG average	1.144	1.458	1.029	1.902	2.08	1.15	<b>1.282</b>



Detections	Central	Isle of Wight	North & East	Portsmouth	Southampton	Western	Total
YTD Detection Rate	36.21%	42.86%	35.19%	33.76%	34.23%	40.69%	<b>36.24%</b>
This month	50.68%	45.88%	38.92%	30.09%	40.89%	40.72%	<b>40.66%</b>
<b>YTD 08/09 Detections</b>	34.37%	42.70%	37.86%	30.57%	37.43%	44.56%	<b>37.27%</b>
MSG position	<b>13 of 15</b>	<b>8 of 15</b>	<b>11 of 15</b>	<b>11 of 15</b>	<b>7 of 15</b>	<b>6 of 15</b>	<b>6 of 8</b>
OCU actual	33.87%	43.03%	34.97%	33.63%	34.79%	41.71%	<b>36.00%</b>
MSG average	40.02%	42.98%	40.68%	35.94%	35.38%	38.88%	<b>41.30%</b>

Note: Detections refer to Sanction Detections ONLY



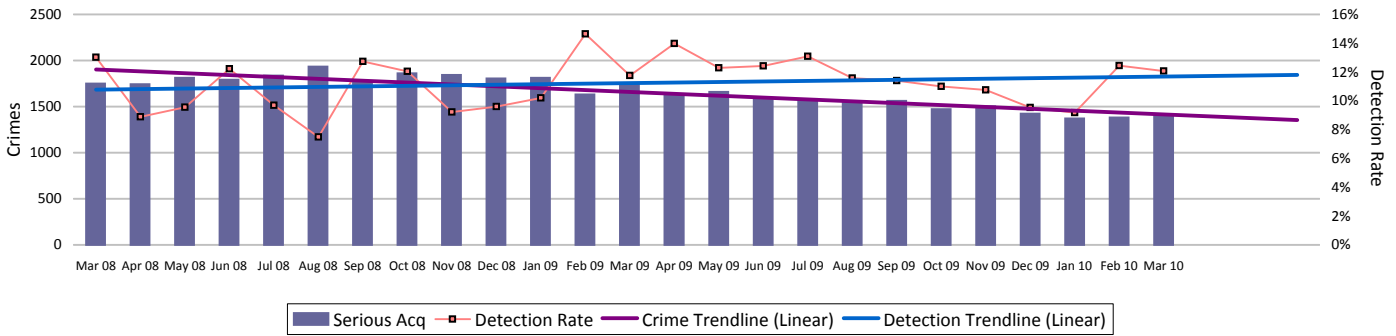
Note: MSG data is always published a month in arrears. For an explanation of this data, refer to the Summary on page 2

# Catching criminals and managing offenders

## Serious acquisitive crime

SPI 5.2 Force Target

Serious acquisitive crime consists of crimsec codes 28, 29, 34A, 34B, 37/2, 45 and 48



Crimes	Central	Isle of Wight	North & East	Portsmouth	Southampton	Western	Total
YTD Crimes	3657	712	3589	3071	3713	3408	18150
YTD Target	4091	918	4391	3942	4890	4165	22397
YTD 08/09 Crimes	3880	896	4270	4036	4553	3950	21585
This month	288	47	316	226	306	235	1418
% change from 08/09	-5.75%	-20.54%	-15.95%	-23.91%	-18.45%	-13.72%	-15.91%
MSG position	4 of 15	1 of 15	6 of 15	2 of 15	9 of 15	8 of 15	2 of 8
OCU actual	1.839	0.891	1.941	3.291	4.122	1.914	2.252
MSG average	2.406	1.975	2.331	4.621	4.343	1.97	2.885



Detections	Central	Isle of Wight	North & East	Portsmouth	Southampton	Western	Total
Target >15%							
YTD Detection Rate	9.82%	15.17%	10.95%	13.51%	12.58%	11.18%	11.70%
This month	10.42%	10.64%	9.81%	11.50%	16.67%	11.91%	12.06%
YTD 08/09 Detections	11.57%	13.84%	8.74%	11.97%	9.71%	10.63%	10.61%
MSG position	13 of 15	6 of 15	9 of 15	5 of 15	10 of 15	12 of 15	4 of 8
OCU actual	9.46%	15.20%	11.55%	13.79%	12.02%	10.98%	11.66%
MSG average	12.81%	14.52%	13.49%	11.61%	13.71%	12.92%	13.30%

Note: Detections refer to Sanction Detections ONLY



## Serious Acquisitive offences OBTJ

SPI 6.2

Up to and including December 2009

	Recorded Crime		Total OBTJs		Hampshire		Rolling Average	
	Month	RA	Month	RA	Month	RA	MSG	E&W
Aggravated burglary in a dwelling	5	47	0	10	0.0%	21.3%	20.9%	24.5%
Aggravated vehicle taking	18	236	15	181	83.3%	76.7%	74.6%	74.1%
Burglary in a dwelling	495	5621	29	930	5.9%	16.6%	15.6%	14.5%
Robbery	82	1090	10	234	12.2%	21.5%	23.1%	18.0%
Theft from a vehicle	636	9624	25	394	3.9%	4.1%	7.5%	8.3%
Theft of a motor vehicle	190	2565	21	306	11.1%	11.9%	13.3%	13.1%

	Convictions	Caution	TICs	Cannabis Warnings	PNDs
	Rolling 12 month Average				
Aggravated burglary in a dwelling	10	0	0	0	0
Aggravated vehicle taking	161	20	0	0	0
Burglary in a dwelling	547	40	343	0	0
Robbery	228	3	3	0	0
Theft from a vehicle	218	62	114	0	0
Theft of a motor vehicle	248	36	22	0	0

RA = Rolling Annual  
E&W = England & Wales

Note: MSG data is always published a month in arrears. For an explanation of this data, refer to the Summary on page 2

## Catching criminals and managing offenders

### Serious acquisitive crime breakdown

#### Robbery

Year to date	Central	Isle of Wight	North & East	Portsmouth	Southampton	Western	Total
Crimes	101	24	186	229	410	130	<b>1080</b>
08/09 crimes	116	22	180	251	418	160	<b>1147</b>
% change from 08/09	-12.93%	9.09%	3.33%	-8.76%	-1.91%	-18.75%	<b>-5.84%</b>
MSG position	3 of 15	4 of 15	9 of 15	3 of 15	11 of 15	6 of 15	<b>3 of 8</b>
Detection rate	39.60%	41.67%	25.81%	26.20%	20.00%	23.08%	<b>25.00%</b>
MSG position	2 of 15	1 of 15	11 of 15	6 of 15	12 of 15	13 of 15	<b>3 of 8</b>
March 2010	Central	Isle of Wight	North & East	Portsmouth	Southampton	Western	Total
Crimes	10	3	20	14	39	10	<b>96</b>
Detection rate	30.00%	0.00%	40.00%	57.14%	15.38%	40.00%	<b>30.21%</b>

#### Dwelling burglary

Year to date	Central	Isle of Wight	North & East	Portsmouth	Southampton	Western	Total
Crimes	1119	246	1172	1025	1075	895	<b>5532</b>
08/09 crimes	1055	283	1349	1427	964	990	<b>6068</b>
% change from 08/09	6.07%	-13.07%	-13.12%	-28.17%	11.51%	-9.60%	<b>-8.83%</b>
MSG position	5 of 15	2 of 15	8 of 15	5 of 15	4 of 15	6 of 15	<b>2 of 8</b>
Detection rate	13.94%	15.45%	12.54%	19.02%	16.84%	21.01%	<b>16.36%</b>
MSG position	12 of 15	10 of 15	13 of 15	4 of 15	7 of 15	4 of 15	<b>5 of 8</b>
March 2010	Central	Isle of Wight	North & East	Portsmouth	Southampton	Western	Total
Crimes	91	17	107	118	99	45	<b>477</b>
Detection rate	16.48%	11.76%	6.54%	6.78%	11.11%	11.11%	<b>10.06%</b>

#### Vehicle crime

Year to date	Central	Isle of Wight	North & East	Portsmouth	Southampton	Western	Total
Crimes	2437	442	2231	1817	2228	2383	<b>11538</b>
08/09 crimes	2709	591	2741	2358	3171	2800	<b>14370</b>
% change from 08/09	-10.04%	-25.21%	-18.61%	-22.94%	-29.74%	-14.89%	<b>-19.71%</b>
MSG position	7 of 15	1 of 15	4 of 15	2 of 15	9 of 15	9 of 15	<b>2 of 8</b>
Detection rate	6.69%	13.57%	8.87%	8.81%	9.16%	6.84%	<b>8.22%</b>
MSG position	11 of 15	5 of 15	7 of 15	7 of 15	7 of 15	14 of 15	<b>6 of 8</b>
March 2010	Central	Isle of Wight	North & East	Portsmouth	Southampton	Western	Total
Crimes	187	27	189	94	168	180	<b>845</b>
Detection rate	6.42%	11.11%	8.47%	10.64%	20.24%	10.56%	<b>11.12%</b>
Detection numbers	12	3	16	10	34	19	<b>94</b>

#### Theft of a motor vehicle

Year to date	Central	Isle of Wight	North & East	Portsmouth	Southampton	Western	Total
Crimes	587	110	606	362	529	413	<b>2607</b>
MSG position	11 of 15	1 of 15	7 of 15	3 of 15	6 of 15	3 of 15	<b>2 of 8</b>
Detection rate	16.52%	36.36%	16.83%	20.44%	14.56%	20.10%	<b>18.14%</b>
MSG position	11 of 15	1 of 15	8 of 15	4 of 15	8 of 15	4 of 15	<b>5 of 8</b>
March 2010	Central	Isle of Wight	North & East	Portsmouth	Southampton	Western	Total
Crimes	39	4	47	15	44	29	<b>178</b>
Detection rate	17.95%	25.00%	23.40%	46.67%	9.09%	13.79%	<b>19.10%</b>
Detection numbers	7	1	11	7	4	4	<b>34</b>

#### Theft from a motor vehicle

Year to date	Central	Isle of Wight	North & East	Portsmouth	Southampton	Western	Total
Crimes	1850	332	1625	1455	1699	1970	<b>8931</b>
MSG position	6 of 15	1 of 15	4 of 15	4 of 15	9 of 15	11 of 15	<b>2 of 8</b>
Detection rate	3.57%	6.02%	5.91%	5.91%	7.47%	4.06%	<b>5.32%</b>
MSG position	12 of 15	12 of 15	6 of 15	8 of 15	6 of 15	14 of 15	<b>6 of 8</b>
March 2010	Central	Isle of Wight	North & East	Portsmouth	Southampton	Western	Total
Crimes	148	23	142	79	124	151	<b>667</b>
Detection rate	3.38%	8.70%	3.52%	3.80%	24.19%	9.93%	<b>9.00%</b>
Detection numbers	5	2	5	3	30	15	<b>60</b>

Robbery, dwelling burglary and vehicle crime are the component parts of serious acquisitive crime. These individual crime types do not have targets.

## Catching criminals and managing offenders

### Gun crime rate

	Central	Isle of Wight	North & East	Portsmouth	Southampton	Western	Total	MSG position 01 01 09 - 31 12 09
YTD March 2010	33	6	21	16	15	13	104	4 of 8
YTD March 2009	26	3	33	16	24	17	119	
% change from 08/09	26.9%	100.0%	-36.4%	0.0%	-37.5%	-23.5%	-12.6%	

SPI 5.5

Gun crime figures published reflect the APACS technical definition which includes "where the victim is convinced of the presence of a firearm, even if it is concealed and there is evidence of the suspect's intention to create this impression".

### Knife crime rate

	Central	Isle of Wight	North & East	Portsmouth	Southampton	Western	Total	MSG position 01 10 08 - 30 09 09
YTD March 2010	93	30	137	110	204	83	657	3 of 8
YTD March 2009	136	32	134	125	210	80	717	
% change from 08/09	-31.6%	-6.3%	2.2%	-12.0%	-2.9%	3.8%	-8.4%	

SPI 5.6

**Knife** = knife or other sharp instrument (including broken glass/bottles) piercing the skin or, for threats and attempts, instruments normally capable of piercing the skin. The measure for counting broken glass/bottles has changed for 09-10 with less occurrences being counted by the Home Office. Knife crime figures published reflect the APACS technical definition which includes "where the victim is convinced of the presence of a knife, even if it is concealed and there is evidence of the suspect's intention to create this impression".

### Serious sexual crime OBTJ rate

SPI 6.4

The table below shows % of persons brought to justice for serious sexual crimes against the total number of serious sexual crimes

OBTJ Crime category	Jun-09	Jul-09	Aug-09	Sep-09	Oct-09	Nov-09	Dec-09	Rolling average
Tier 1: Serious Sexual Offences	35%	11%	9%	34%	21%	49%	37%	30%

### Murder offences

SPI 5.4

	Central	Isle of Wight	North & East	Portsmouth	Southampton	Western	Total
YTD March 2010	5	2	3	2	3	4	19
YTD Domestic Murders 2009/10	2	0	1	0	1	1	5
YTD March 2009	2	2	0	1	3	2	10
YTD Domestic Murders 2008/09	1	1	0	0	1	2	5

Note: The definition of Domestic Murder used above is now in line with the 2009/10 APACS Guidance (in previous months, the government and ACPO definition was used - this is located on pg 21 of the profile). In APACS a domestic homicide is where the relationship between victim and suspect was either: Spouse, Common law spouse or cohabiting partner, Boyfriend/Girlfriend, Ex-boyfriend/girlfriend or Adulterous relationship.

### FIU1 submissions

	Central	Isle of Wight	North & East	Portsmouth	Southampton	Western	Total
YTD March 2010	230	207	281	197	252	195	1362
Number of eligible detections	3509	1657	3858	3725	3707	3021	19477
% submission rate	7%	12%	7%	5%	7%	6%	7%

	Central	Isle of Wight	North & East	Portsmouth	Southampton	Western	Total
March 2010	8	6	23	15	17	12	81
Number of eligible detections	299	93	366	297	289	233	1577
% submission rate	3%	6%	6%	5%	6%	5%	5%

Eligible crimes are those covered by Proceeds of Crime Act (POCA)

### Prolific and other Priority Offenders (PPOs) convictions

Number of convictions recorded against identified, prolific and other priority offenders (PPOs)

	Apr-Jun 09	Jul-Sept 09	Oct-Dec 09	Jan 2010	Feb 2010	YTD
Persistent Young Offenders	260	151	67	11	8	497
Priority Prolific Offenders	94	91	64	21	22	292
Persistent Priority Prolific Young Off's	14	7	1	1	1	24
Young Offenders	555	588	614	186	209	2152

### Class A drugs sanction detections

Force Target

	Central	Isle of Wight	North & East	Portsmouth	Southampton	Western	Total
YTD March 2010	25	26	218	56	112	78	515
YTD Target	50.00	40.00	80.00	80.00	100.00	50.00	400.00
March 2010	2	1	5	4	5	0	17

### Drug seizures information

	Central	Isle of Wight	North & East	Portsmouth	Southampton	Western	Total
YTD February 2010	1048	1307	828	710	1078	577	5548
YTD February 2009	1018	936	608	678	689	419	4348
% change from 08/09	2.9%	39.6%	36.2%	4.7%	56.5%	37.7%	27.6%

Note: This data is produced one month in arrears and some data from summer 2009 remains outstanding.

### Number of Organised Crime Groups (OCGs) disrupted

Force Target

YTD March 2010	2008/2009	2009/2010	YTD Target
Number of OCGs identified and mapped	46	54	
Number of OCGs disrupted or partially disrupted through Crime OCU activity	27	34	25.0
Number of OCGs subject to tactical activity	96	126	

Note: MSG data is always published a month in arrears. For an explanation of this data, refer to the Summary on page 2

## Protecting our communities

**Domestic violence and abuse** is defined by ACPO as: 'any incidence of threatening behaviour, violence or abuse (psychological, physical, sexual, financial or emotional) between adults, aged 18 and over, who are or have been intimate partners or family members, regardless of gender or sexuality'

### Domestic violence and abuse crime arrest rate

Force Target

Domestic violence arrest rate is based on records where the occurrence has been flagged as a domestic, and has an arrest event or a linked person reason of arrested.

Target >80%

Year to Date	Central	Isle of Wight	North & East	Portsmouth	Southampton	Western	Total
Domestic crimes	2084	639	1495	1427	2019	1484	9148
Domestic crime detection rate	33.78%	44.44%	41.74%	38.54%	33.58%	40.57%	37.63%
Domestic crime arrests	1642	514	1227	1167	1638	1151	7339
Domestic crime arrest rate	78.79%	80.44%	82.07%	81.78%	81.13%	77.56%	80.23%

Month	Central	Isle of Wight	North & East	Portsmouth	Southampton	Western	Total
Domestic crimes	185	51	117	137	170	134	794
Domestic crime detection rate	47.57%	45.10%	47.01%	37.23%	42.35%	36.57%	42.57%
Domestic crime arrests	157	44	92	110	122	103	628
Domestic crime arrest rate	84.86%	86.27%	78.63%	80.29%	71.76%	76.87%	79.09%

### Repeat incidents of domestic violence cases reviewed at MARAC

SPI 14.1

A Multi Agency Risk Assessment Conference (MARAC) meet to manage the highest risk domestic abuse cases. A 'case' = a victim & perpetrator(s) being reviewed at the same MARAC. Once a case has been to MARAC, it remains flagged as a MARAC case for 12 mths after the most recent MARAC review. A repeat case is when a case reviewed at MARAC has also been reviewed at the same MARAC within the preceding 12 mths. For further information on this measure please refer to Home Office Guidance on Performance Indicators for Policing & Community Safety 09/10.

Year to Date	Central	Isle of Wight	North & East	Portsmouth	Southampton	Western	Total
Number of cases reviewed at MARAC	367	220	481	438	371	347	2224
Repeat cases reviewed at MARAC	89	78	184	101	134	88	674
% Repeat cases	24%	35%	38%	23%	36%	25%	30%

### Hate crime detection rate

Force Target

Target >45%

Year to Date	Central	Isle of Wight	North & East	Portsmouth	Southampton	Western	Total
Incidents	314	69	276	486	670	255	2070
Crimes	221	48	186	317	441	179	1392
Detections	107	27	98	157	217	86	692
Detection Rate	48.42%	56.25%	52.69%	49.53%	49.21%	48.04%	49.71%

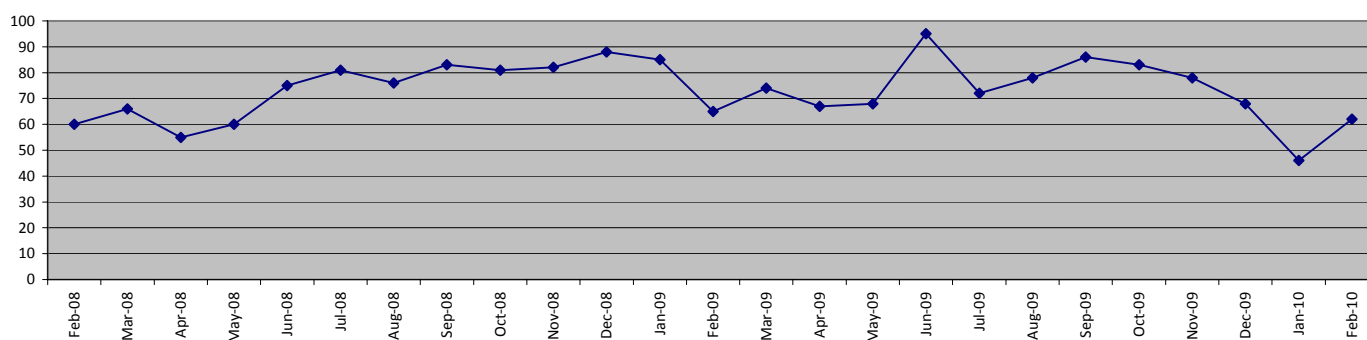
Month	Central	Isle of Wight	North & East	Portsmouth	Southampton	Western	Total
Incidents	20	4	22	46	28	21	141
Crimes	13	4	16	24	25	15	97
Detections	10	3	6	14	14	7	54
Detection Rate	76.92%	75.00%	37.50%	58.33%	56.00%	46.67%	55.67%

## Protecting our communities

### Road traffic casualties

SPI 9.1 Force Target

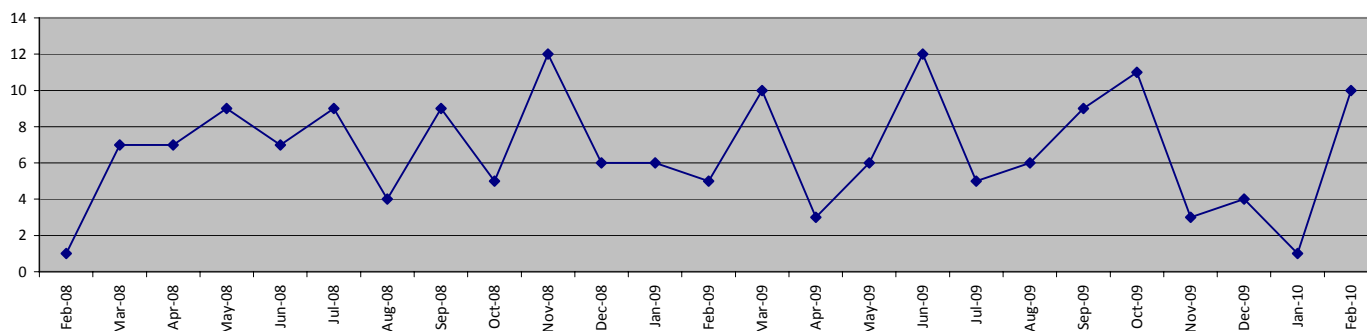
**Fatal/serious injury casualties - all victims**



The Force target 2009/2010 is for less than 888 casualties, which equates to less than 813 in 334 days      YTD Feb 2010 = 803 casualties

	Central	Isle of Wight	North&East	Portsmouth	Southampton	Western	Total
April 2009 - February 2010	198	75	154	80	92	204	<b>803</b>
of these, fatalities were	5	6	9	2	1	14	<b>37</b>
April 2008 - February 2009	170	83	187	98	80	213	<b>831</b>

**Fatal/serious injury casualties - victims under 16 years**



The DETR target is for a 50% reduction in child casualties by 2010 from 164 to 82

	Central	Isle of Wight	North&East	Portsmouth	Southampton	Western	Total
April 2009 - February 2010	20	5	11	12	8	14	<b>70</b>
of these, fatalities were	0	0	0	0	0	0	<b>0</b>
April 2008 - February 2009	17	11	19	10	10	12	<b>79</b>

- Note: YTD numbers may change as the accident record data are updated each month
- Note: The casualties in East Hampshire have all been attributed to North & East OCU in the absence of a breakdown by OCUs
- Note: In October an issue was identified with the data collection for this measure. This resulted in an increase in the figures. The data provided on this page has now been updated.

## Protecting our communities

Note: The below data shows some reductions on data published in previous months, this is due to technical problems being encountered. These issues have now been resolved, and this data is now correct.

Impaired Driving Interventions									
		Dog Support Unit	Force Support Unit	Roads Policing Unit	Tactical Firearms Support Unit	Other 8 OCU Officers	8 OCU Total	Rest of Force	Force Total
Breath Tests	YTD Jun - Mar 10	221	69	10793	1385	1	12469	13132	25601
	Mar 10	26	3	921	180	0	1130	1164	2294
	YTD Jun 08 - Mar 09	95	130	17942	2134	0	20301	15394	35695
	Mar 09	11	11	1173	132	0	1327	1613	2940
Field Impairment Tests	YTD Jun - Mar 10	0	0	434	11	0	445	32	477
	Mar 10	0	0	52	0	0	52	2	54
	YTD Jun 08 - Mar 09	0	0	728	19	1	748	50	798
	Mar 09	0	0	37	0	0	37	5	42

<sup>1</sup> The Drager (breath test) units were implemented in June 2008 therefore no data can be included in these figures for April and May 2008.

Speed Offences (includes Fixed Penalty Notices and Driver Awareness Training referrals)										
		Dog Support Unit	Force Support Unit	Roads Policing Unit	Specialist Firearms Officers	Armed Response Vehicles	Other 8 OCU Officers	8 OCU Total	Rest of Force	Force Total
YTD Apr 09 - Feb 10		33	2	6834	13	82	7	6971	511	7482
Feb 10		11	0	545	0	20	0	576	54	630
YTD Apr 08 - Feb 09		19	1	6906	26	160	0	7112	443	7555
Feb 09		1	0	319	0	5	0	325	27	352
March 10 (Provisional)		7	0	573	1	13	0	594	65	659

Mobile Phone Offences										
		Dog Support Unit	Force Support Unit	Roads Policing Unit	Specialist Firearms Officers	Armed Response Vehicles	Other 8 OCU Officers	8 OCU Total	Rest of Force	Force Total
YTD Apr 09 - Feb 10		8	3	2638	59	335	0	3043	1157	4200
Feb 10		1	0	258	5	37	0	301	104	405
YTD Apr 08 - Feb 09		17	2	3561	47	521	0	4148	1470	5618
Feb 09		0	0	193	1	39	0	233	101	334
March 10 (Provisional)		1	0	295	0	36	0	332	88	420

Seatbelt Offences										
		Dog Support Unit	Force Support Unit	Roads Policing Unit	Specialist Firearms Officers	Armed Response Vehicles	Other 8 OCU Officers	8 OCU Total	Rest of Force	Force Total
YTD Apr 09 - Feb 10		20	1	3003	2	151	1	3178	953	4131
Feb 10		3	0	358	0	8	0	369	75	444
YTD Apr 08 - Feb 09		26	2	5649	4	421	3	6105	1551	7656
Feb 09		1	0	322	1	8	0	332	74	406
March 10 (Provisional)		3	0	179	0	5	0	187	49	236

### Sickness Data

In July Hampshire Constabulary undertook a major upgrade of the software used to provide sickness data. This upgrade has resulted in a significant amount of change to the system and has resulted in sickness data being unavailable in time to publish in this Performance Profile

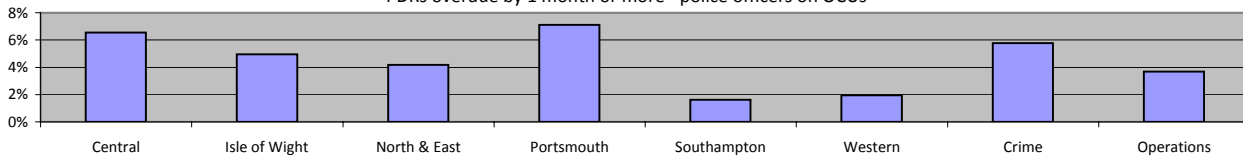
SPI 13.1 Force Target  
SPI 13.2 Force Target

# Making the most of our resources

## Overdue PDRs

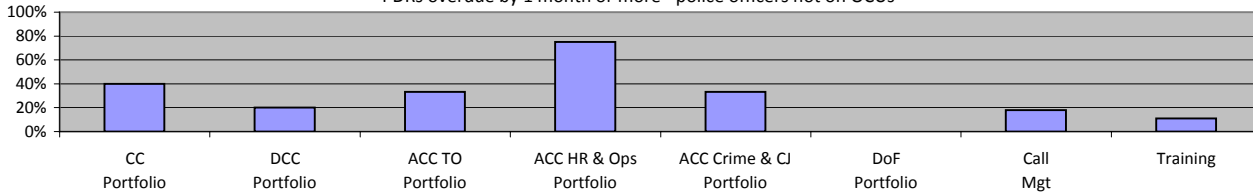
### Police officer PDRs - police officers in OCU's

PDRs overdue by 1 month or more - police officers on OCU's



March 2010	Central	Isle of Wight	North & East	Portsmouth	Southampton	Western	Crime	Operations
Population	612	222	574	408	495	513	399	381
Overdue	40	11	24	29	8	10	23	14
% overdue	6.5%	5.0%	4.2%	7.1%	1.6%	1.9%	5.8%	3.7%

PDRs overdue by 1 month or more - police officers not on OCU's

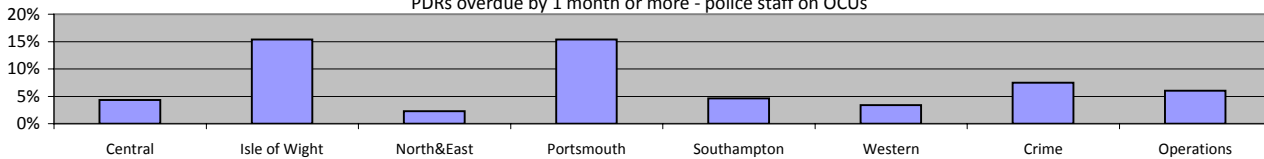


March 2010	CC Portfolio	DCC Portfolio	ACC TO Portfolio	ACC HR & Ops Portfolio	ACC Crime & CJ Portfolio	DoF Portfolio	Call Mgt	Training
Population	5	45	9	4	12	N/A	39	55
Overdue	2	9	3	3	4	N/A	7	6
% overdue	40.0%	20.0%	33.3%	75.0%	33.3%	N/A	17.9%	10.9%

ACC HR and Ops Portfolio excludes Training figures which are reported on separately. No police officers work within DoF Portfolio.

### Police staff PDRs - police staff in OCU's

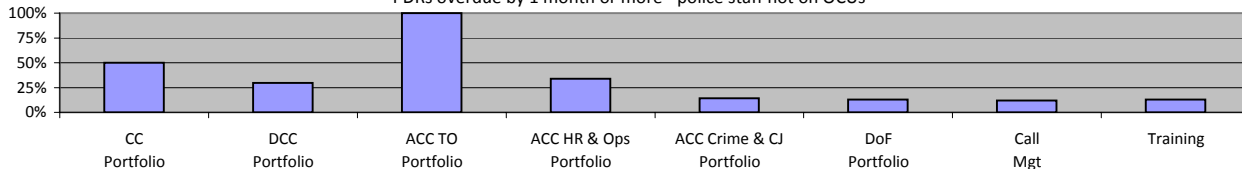
PDRs overdue by 1 month or more - police staff on OCU's



March 2010	Central	Isle of Wight	North&East	Portsmouth	Southampton	Western	Crime	Operations
Population	254	104	218	182	217	208	320	133
Overdue	11	16	5	28	10	7	24	8
% overdue	4.3%	15.4%	2.3%	15.4%	4.6%	3.4%	7.5%	6.0%

### Police staff PDRs - police staff not in OCU's

PDRs overdue by 1 month or more - police staff not on OCU's



March 2010	CC Portfolio	DCC Portfolio	ACC TO Portfolio	ACC HR & Ops Portfolio	ACC Crime & CJ Portfolio	DoF Portfolio	Call Mgt	Training
Population	2	322	2	62	335	149	398	86
Overdue	1	96	2	21	48	19	47	11
% overdue	50.0%	29.8%	100.0%	33.9%	14.3%	12.8%	11.8%	12.8%

ACC HR and Ops Portfolio excludes Training figures which are reported on separately

## Making the most of our resources

### Budget spend

The actual spend to the end of February 2010 was £267.600m. The projected spend for the force at the end of the financial year is £299.391m, which will be an underspend of £3.706m against the agreed budget.

	Central	Isle of Wight	North & East	Portsmouth	Southampton	Western	Crime	Operations
Projected over/(under)spend 2009/2010	-£497,000	-£94,000	£34,000	-£319,000	-£133,000	-£318,000	-£643,000	-£160,000

### Efficiency savings

The Authority needs to maximise efficiency gains both due to its budgetary constraints and in order to achieve value for money. In addition, there is a national Home Office target to deliver recurring efficiency or productivity gains equivalent to 10.3% of the 2007/08 'Gross Revenue Expenditure' over three years, by the end of 2010/11. Each Authority must set its own challenging target. The Authority and Force are currently working to a target equivalent to the national target, which equates to £33m over the 3 years (an average of £11m per annum). The actual achieved as at 31/03/09 was £9.4m. The current value of efficiency initiatives included in the register is £32.541m

### Specialist support

7 OCU	OCU Supported							Total
	Central	Isle of Wight	North & East	Portsmouth	Southampton	Western	Other	
April 2009	2	1	4	4	4	1	0	16
May 2009	1	1	0	3	3	0	0	8
June 2009	4	0	1	2	1	1	0	9
July 2009	4	1	1	1	1	1	0	9
August 2009	3	1	6	0	1	3	0	14
September 2009	2	2	2	1	2	5	0	14
October 2009	0	0	1	2	0	2	0	5
November 2009	1	0	4	0	3	0	0	8
December 2009	0	0	2	2	3	0	0	7
January 2010	0	2	0	2	2	2	0	8
February 2010	0	0	4	1	1	3	0	9
March 2010	0	1	1	0	1	1	0	4
<b>Total</b>	<b>17</b>	<b>8</b>	<b>25</b>	<b>18</b>	<b>21</b>	<b>18</b>	<b>0</b>	<b>107</b>

NOTE: An 'assist' includes assistance that is outside of normal working practices and can encompass practical resources and/or managerial support. For example, it includes support with house to house/investigative enquiries, administrative support, interviewing/statement taking, advice and IT examinations, to name a few. A single assist can involve anything from one member of staff to several from a period of a few hours, to a whole week. An assist does not include phone calls.

### 8 OCU

8 OCU Commitment to ANPR Operations/OCU Support - April - March 10								
	OCU Supported							Total
	Central	Isle of Wight	North & East	Portsmouth	Southampton	Western	Other*	
No. of Ops	152	12	112	76	75	65	48	540
Arrests	72	10	35	43	65	21	10	256
S.165 Vehicle Seizures	226	16	113	165	196	96	128	940
Impaired Drivers	22	0	18	29	30	9	10	118
<b>Total Results</b>	<b>320</b>	<b>26</b>	<b>166</b>	<b>237</b>	<b>291</b>	<b>126</b>	<b>148</b>	<b>1314</b>
Cash/POCA Seizures	Seized by or assisted by 8 OCU ANPR teams (£)							<b>23,470</b>
Drugs Seizures	Seized by or assisted by 8 OCU ANPR teams (approx £)							<b>1,501,340</b>

8 OCU NON-ANPR Pre-Planned Operations/Tasks/Requests for Resources - April - March 10								
	OCU Supported							Total
	Central	Isle of Wight	North & East	Portsmouth	Southampton	Western	Other*	
No. of Ops	238	98	219	170	316	311	50	1402
Arrests	77	326	109	75	138	77	13	815
S.165 Vehicle Seizures	26	15	21	24	43	54	2	185
<b>Total Results</b>	<b>103</b>	<b>341</b>	<b>130</b>	<b>99</b>	<b>181</b>	<b>131</b>	<b>15</b>	<b>1000</b>
Cash/POCA Seizures	Seized by or assisted by 8 OCU teams (not ANPR) (£)							<b>168,909</b>
Drugs Seizures	Seized by or assisted by 8 OCU ANPR teams (approx £) from Nov 2009							<b>12,910</b>
Drugs Seizures	Seized by or assisted by 8 OCU teams (not ANPR) (approx Kgs)							<b>16.9</b>

\* Isle of Wight arrests include IOW Festival and Bestival detentions.

\* Other is Mutual Aid or Out of County, a review of locations has reduced this number.

# Equipping our team to deliver

## Financial awareness training

Financial awareness training will be undertaken for budget holders with the aim of ensuring a minimum of 95% of budget holders are trained by the end of the financial year. The target is for at least 95% of all Chief Inspector to Chief Superintendents to be trained by the end of the financial year

	Full Year Apr 09 - Mar 10		Year to Date (Mar 10)	
	Courses Planned	Numbers to be trained	Courses Held	Numbers Trained
Chief Inspector to Chief Superintendent (target)	10	160	11	59
All staff				133

## Preparing for frontline supervision

A leadership project has been completed and a new training programme has been established.

	Full Year Apr 09 - Mar 10		Year to Date (Mar 10)	
	Courses Planned	Numbers to be trained	Courses Held	Numbers Trained
Sergeants Operational Activities	6	108	6	69
Inspectors Statutory Responsibilities	5	70	4	48
First Line Manager - Leadership Part 1	6	96	11	154
First Line Manager - Leadership Part 2	6	96	7	92
First Line Manager - Action Learning Sets	18	108	31	294

## Mobile data

The Constabulary has achieved the roll out of 300 mobile data terminals (as required by NPJA).

## Minority ethnic officer recruitment

SPI 3.1

	All recruits	Minority ethnic recruits	%
YTD March 2010	182	4	2.2%

## Female officer representation

SPI 3.2

	Male strength	Female strength	%
YTD March 2010	2658.1	1037.5	28.07%