

# Performance Profile September 2009



## Summary

## 2009/10 Reporting Year

This document contains a strategic overview of the Constabulary's performance. It has a variety of performance measures within it. The format of the profile has been aligned to the Policing Priorities identified by the Control Strategy. It provides information on our performance against Force targets, some of the APACS Statutory Performance Indicators (SPI) and the Policing Pledge. It also aims to provide supplementary information to assist in understanding reasons behind the performance in these areas. It has been designed as a headline document that will enable our customers, both internally and externally, to easily assess performance information for key domains.

At the front of the document there are several matrices that reflect our performance against our targets, firstly year to date and secondly relevant for that particular month.

Performance in key areas is then explored in more depth with an indication of where each measure has originated - for example, APACS Statutory Performance Indicator (SPI) or a Force Control Strategy (FCS) measure.

Where applicable, within the document, MSG (Most Similar Group) data is published along with the crime and detection data. MSGs are calculated by the Home Office based on a number of socio-demographic & geographic variables which are strongly linked to crime/incident levels and the fear of crime. These groups provide a benchmark for comparison of crime and detection rates. Below the applicable crime tables there are three rows relating to MSG data. The first provides the MSG position for the OCU/Force for that crime type. The second displays OCU Actual, this is the number of offences per 1,000 population. The third row shows the MSG Average which is the total number of offences per 1,000 population divided by the number within the MSG. The same three rows are provided in relation to detection data, where data is provided in % figures rather than per 1,000 population.

Please note: iQuanta data is provisional. Within the profile, Hampshire data is published and compared against the MSG average. The other forces within Hampshire's MSG are: Avon and Somerset, Bedfordshire, Essex Hertfordshire, Kent, Sussex and Thames Valley. We are unable to provide figures from iQuanta for these forces, due to the provisional nature of this data.

This document is then taken forward by key stakeholders within the organisation to the Force Performance Review Group, where it is used to highlight areas of good performance and those for development.

Crime OCU contribute to the following areas within this document, either via investigation, forensic support, and/or review of these crimes: homicide, serious violent, sexual and acquisitive crime, class A drug seizures, domestic violence/hate crime, burglary (Op Nemesis), FIU form submissions, gun/knife crime (where this results in a major investigation/forensic support), SO assistance to TO, sickness and PDRs.

This is an evolving document and as such, the content may alter over time and any feedback would be welcomed by the Performance Review Team.

MSG Colour Key	Force	OCU
	1-2	1-4
	3-4	5-8
	5-6	9-12
	7-8	13-15

## Year to date and Monthly performance matrices

4-6

including notes on matrices terminology

## Policing Pledge Scorecard

7 Policing Pledge Scorecard

## Providing an excellent service

8	National public confidence measure	SPI 2.2	FCS	iQuanta
8	Local confidence survey data			Consultation & Research Team
8	Overall satisfaction	SPI 1.1	FCS	Consultation & Research Team
8	Being kept informed		FCS	Consultation & Research Team
9	Comparative satisfaction of minority ethnic groups	SPI 1.2		Consultation & Research Team
9	Satisfaction of victims of racist incidents	SPI 1.3		Consultation & Research Team
9	MSG user satisfaction data			Consultation & Research Team
9-10	Responding to victims of crime			Citizen Focus Inspector
10	Letters of appreciation, reports of incivility, expression of dissatisfaction			Professional Standards Department
11	Responding to public contact (inc call handling data)			Call Management

## An active presence in every neighbourhood

12	Rowdy and nuisance behaviour		FCS	Business Objects
12	Vehicle nuisance/Inappropriate vehicle use		FCS	Business Objects
13	Safer Neighbourhood Teams			CARM team & Personnel
14	Criminal damage		FCS	Business Objects

## Catching criminals and managing offenders

15	All crime and sanction detections		FCS	Business Objects
16	Serious violent crime, sanction detections and OBJT rate	SPI 5.1&6.1	FCS	Business Objects
17	Assault with less serious injury	SPI 5.3	FCS	Business Objects
18	Serious acquisitive crime, sanction detections and OBJT rate	SPI 5.2&6.2	FCS	Business Objects
19	Serious acquisitive crime breakdown			Business Objects
20	Gun and knife crime	SPI 5.5&5.6		Business Objects
20	Serious sexual crime OBJT rate	SPI 6.4		Criminal Justice Department
20	Murder offences incl domestic murders	SPI 5.4	FCS	Business Objects
20	FIU1 submission levels		FCS	Force Intelligence
20	PPO convictions	SPI 10.1	FCS	Criminal Justice Department
20	Class A drugs sanction detections		FCS	Business Objects
20	Drug seizures			Performance Review Team
20	Organised Crime Groups			7 OCU performance team

## Protecting our communities

21	Domestic violence and abuse		FCS	Business Objects
21	Repeat incidents of domestic violence cases reviewed at MARAC	SPI 14.1		Special Investigations Department
21	Hate crime detection rate		FCS	Business Objects
22	Road traffic casualties	SPI 9.1	FCS	8 OCU performance team

## Making the most of our resources

23	Police officer sickness	SPI 13.1	FCS	PRT - Delphi + Personnel - Staffing Figures
24	Police staff sickness	SPI 13.2		PRT - Delphi + Personnel - Staffing Figures
25	Overdue PDRs			Personnel
26	NCRS compliance - peer audits only		FCS	Force Incident & Crime Registrar
26	Budget spend	SPI 12.1	FCS	Finance
26	Efficiency savings		FCS	Finance
26	Specialist support to TO			7 and 8 OCU performance teams

## Equipping our team to deliver

28	Financial awareness training		FCS	Training Department
28	Preparing for frontline supervision			Training Department
28	Mobile data			Not yet available
28	Minority ethnic officer recruitment	SPI 3.1		Personnel
28	Female officer representation	SPI 3.2		Personnel

## Restricted data

Year to date performance targets matrix

	Target	Actual
<b>Providing an excellent service</b>		
Confidence in local police	>51.3%	49.3%
Overall satisfaction (data for rolling 12 months)	>65.0%	65.0%
<b>An active presence in every neighbourhood</b>		
Rowdy & nuisance behaviour	37656	36149
	OCU specific targets	
Vehicle nuisance / inappropriate vehicle use	7506	6032
	OCU specific targets	
Reduce criminal damage	17164	15898
	OCU specific targets	
<b>Catching criminals &amp; managing offenders</b>		
All crime	81490	76738
	OCU specific targets	
All crime SD	>25%	26.3%
	OCU specific targets	
Serious violent crime	455	470
	OCU specific targets	
Serious violent crime SD	>50%	53.0%
	OCU specific targets	
Assault with less serious injury	6916	7359
	OCU specific targets	
Serious sexual offences (OBTJ)	Data being	developed
Serious acquisitive crime	11229	9570
	OCU specific targets	
Serious acquisitive crime SD	>15%	12.5%
Class A drugs SD*	>201	177
	OCU specific targets	
Organised crime group (OCG) - disruptions	>13	12

Central	Isle of Wight	North & East	Portsmouth	Southampton	Western
<b>Providing an excellent service</b>					
This is a Force measure					
67.0%	69.0%	63.0%	66.0%	61.0%	66.0%
<b>An active presence in every neighbourhood</b>					
6946	2363	6228	6111	8334	6167
6969	2682	7267	5740	8864	6134
1456	459	1231	581	1152	1153
1745	502	1526	647	1419	1668
3592	1136	3168	2042	3191	2769
3784	1258	3298	2327	3326	3171
<b>Catching criminals &amp; managing offenders</b>					
16343	5337	14442	12131	15152	13333
16606	5313	15428	12702	17092	14348
24.5%	30.7%	26.9%	26.8%	26.5%	25.2%
25.0%	30.0%	25.5%	25.5%	25.0%	25.0%
76	39	75	71	144	65
86	31	72	91	118	56
65.8%	53.8%	64.0%	47.9%	40.3%	58.5%
57.0%	60.0%	56.0%	41.0%	45.0%	50.0%
1496	513	1233	1318	1658	1141
1455	487	1226	1000	1630	1119
This is a Force measure					
1970	423	1857	1644	1845	1831
2051	460	2201	1976	2452	2088
10.5%	15.4%	13.2%	14.4%	12.4%	11.9%
14	8	29	22	38	66
25.1	20.1	40.1	40.1	50.1	25.1
Owned by Crime OCU					

Year to date performance targets matrix

	Target	Actual
<b>Protecting our communities</b>		
Domestic crimes arrest rate	>80%	77.0%
Hate crime SD	>45%	47.5%
Road traffic casualties	<372	351
<b>Making the most of our resources</b>		
Police officer sickness *	<3.76	#REF!
Police staff sickness *	<3.76	#REF!
Budget spend	42%	39%
Efficiency savings 2008-2011 (£m)	33	25.4
<b>Equipping our staff to deliver</b>		
Financial awareness training		
Preparing for frontline supervision		
Mobile data		

Central	Isle of Wight	North & East	Portsmouth	Southampton	Western
<b>Protecting our communities</b>					
74.8%	73.7%	78.7%	80.5%	79.0%	74.0%
49.2%	56.5%	47.5%	46.7%	50.4%	36.8%
Owned by Operations OCU					
<b>Making the most of our resources</b>					
#REF!	#REF!	#REF!	#REF!	#REF!	#REF!
#REF!	#REF!	#REF!	#REF!	#REF!	#REF!
41%	39%	41%	40%	42%	40%
This is a Force measure					
<b>Equipping our staff to deliver</b>					
Data not suitable for matrix					
Data not suitable for matrix					
Data not suitable for matrix					

<b>Force Total - targets achieved</b>	<b>12</b>
---------------------------------------	-----------

<b>10</b>	<b>10</b>	<b>10</b>	<b>11</b>	<b>10</b>	<b>10</b>
-----------	-----------	-----------	-----------	-----------	-----------

#### Notes to be read in conjunction with matrices

##### All citizen focus data

##### OBTJ

##### Road traffic casualties

##### Budget spend

##### Efficiency savings

##### SD

##### Sickness data

##### OCU specific targets

Based on "completely or very satisfied"

Offenders Brought To Justice - current data is to

July 2009

All data until

31 August 2009

Data is always one month in arrears

For information on this target see page 26 of this Profile

Sanction detections

Force Actual = total for ALL officers/police staff - including those not in OCU

OCU specific targets are rounded to 2 decimal places; the actual figure may therefore seem the same but appear red due to this rounding

## Monthly performance targets matrix

This matrix is based on monthly data compared to Force targets

	Target	Actual	Central	Isle of Wight	North & East	Portsmouth	Southampton	Western
<b>An active presence in every neighbourhood</b>								
Rowdy & nuisance	6173	5282	1016	349	912	882	1233	890
	OCU specific targets		1142	440	1191	941	1453	1006
Vehicle nuisance / inappropriate vehicle use	1230	864	176	77	195	71	176	169
	OCU specific targets		286	82	250	106	233	273
Reduce criminal damage	2814	2374	492	195	451	308	503	425
	OCU specific targets		620	206	541	381	545	520
<b>Catching criminals &amp; managing offenders</b>								
All crime	13359	12443	2545	1139	2362	1915	2422	2060
	OCU specific targets		2722	871	2529	2082	2802	2352
All crime (SD)	25.0%	27.0%	25.2%	33.2%	29.4%	26.5%	25.7%	25.2%
	OCU specific targets		25.0%	30.0%	25.5%	25.5%	25.0%	25.0%
Serious violent crime	75	69	11	4	11	11	21	11
	OCU specific targets		14	5	12	15	19	9
Serious violent crime SD	>50%	50.7%	36.4%	75.0%	63.6%	45.5%	42.9%	63.6%
	OCU specific targets		57.0%	60.0%	56.0%	41.0%	45.0%	50.0%
Assault with less serious injury	1134	1166	268	58	195	234	227	184
	OCU specific targets		239	80	201	164	267	183
Serious acquisitive crime	1841	1579	346	75	324	249	322	263
	OCU specific targets		336	75	361	324	402	342
Serious acquisitive crime SD	>15%	11.4%	7.2%	6.7%	11.4%	10.4%	18.6%	10.3%
Serious sexual offences (OBTJ)	Data being	developed	This is a Force measure					
Class A drugs SD	>33	19	1	1	7	3	5	2
<b>Protecting our communities</b>								
Domestic crimes arrest rate	>80%	69.8%	64.5%	59.6%	76.8%	79.0%	72.5%	63.2%
Hate crime SD	>45%	47.8%	50.0%	62.5%	47.6%	38.7%	44.4%	70.0%
<b>Making the most of our resources</b>								
Police officer sickness	<0.625	#REF!	#REF!	#REF!	#REF!	#REF!	#REF!	#REF!
Police staff sickness	<0.625	#REF!	#REF!	#REF!	#REF!	#REF!	#REF!	#REF!
<b>Force Total - targets achieved</b>	<b>9</b>		<b>9</b>	<b>9</b>	<b>11</b>	<b>8</b>	<b>10</b>	<b>8</b>

## Hampshire Constabulary Policing Pledge Scorecard

### Pledge

YTD  
2009/2010

Percentage of respondents tending to 'agree' or 'strongly agree' that: 'The police and local council are dealing with the anti-social behaviour and crime issues that matter in this area'

49.3%

### Pledge 1 - Treat people fairly with dignity and respect, ensuring they have fair access to our services

Percentage of respondents answering 'strongly agree' or 'tend to agree' when asked 'The police in this area treat everyone fairly regardless of who they are'

67.3%

### Pledge 2 - Help promote our dedicated Safer Neighbourhoods Teams to the local community, including where they are based, how to contact them and how to work with them

Measure under development - dip sampling of media/communications to be carried out

### Pledge 3 - Ensure we are visible in our neighbourhoods at times when we will be most effective and when communities need us most. Safer Neighbourhoods teams will spend at least 80% of their time visibly working in neighbourhoods, tackling the most serious crime and anti-social behaviour priorities

Safer Neighbourhood Team abstractions

See

Safer Neighbourhood Team vacancy rate

In p

### Pledge 4 - Respond to every message directed to every Safer Neighbourhood Team within 24 hours and, where necessary, provide a more detailed response as soon as we can

Measure under development - dip sampling of media/communications to be carried out

### Pledge 5 - Aim to answer 999 calls within 10 seconds, deploy to emergencies immediately and give an estimated time to arrive. Provide assistance to callers as safely and quickly as possible, aiming to get to them within 15 minutes

No. of 999 calls

136010

%age of 999 calls answered within 10 seconds

92.9%

%age of Grade 1 calls attended within 15 minutes

89.9%

### Pledge 6 - Answer all non emergency calls promptly. If attendance is needed, agree with the caller an acceptable time to attend

No of non emergency calls

408464

%age of non emergency calls answered within 10 seconds

88.9%

Scheduling pilot permanent reporting in progress

In p

### Pledge 7 - Create opportunities to meet them at least once a month to agree or update neighbourhood priorities. Arrange regular meetings, street briefings, mobile police station visits and similar by keeping beat web pages up to date and online postcode search to our communities so that they can be kept up to date

Measure under development - dip sampling of media/communications to be carried out

### Pledge 8 - Provide monthly updates on what action we and our partners are taking to make neighbourhoods safer and how the force is performing

Regular neighbourhood performance data is published on the Internet

5 times

Measure under development - other monitoring to be carried out

### Pledge 9 - Agree with victims of crime how often they would like to be kept informed of progress in their case and for how long. Victims have the right to be kept informed at least every month if they wish and for as long as is reasonable

Satisfaction of victims with respect to being kept informed (very / fairly satisfied)

56.0%

% where the victim has been updated on a monthly basis

96.6%

Compliance with victims contact as part of the Victims' Code

See

### Pledge 10 - Acknowledge any dissatisfaction with the service brought to our attention within 24 hours of it being reported and ensure that appropriate steps are taken to resolve concerns

Reports of incivility

89

**British Crime Survey Confidence Data**

SPI 2.2 Force Target

This data is updated by iQuanta approximately every quarter

**National Public Confidence Measure**

Mar-09

Hampshire	<b>49.3%</b>
MSG Position	<b>3 of 8</b>
MSG average	48.5%

This data is based on 'The police and local council are dealing with the anti-social behaviour and crime issues that matter in this area'

The Home Office has set a target to achieve a 12% improvement by 2012 against the baseline of 47.3%

This year's required improvement is 4%

**Local Confidence Survey Data**

Figures relate to the percentage of respondents who agree or strongly agree with the question.

Hampshire's local surveys have a confidence level of +/-4%. This means that changes of less than 4% may not reflect a real change in performance.

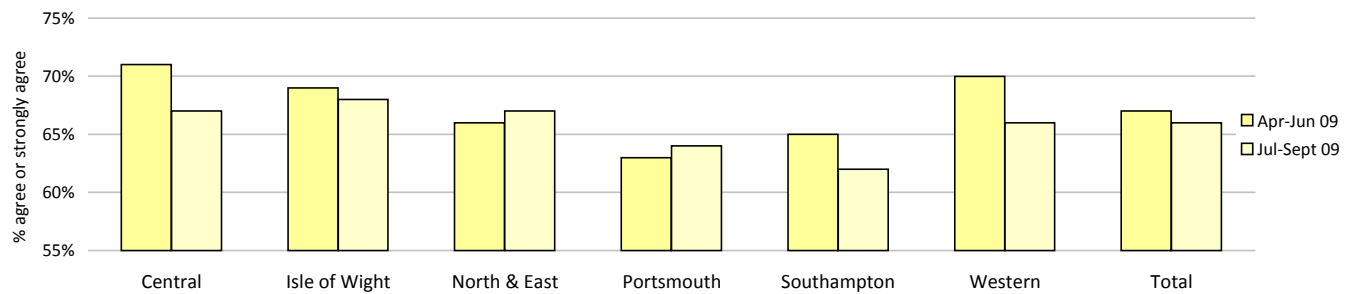
**The police and local council are dealing with the anti-social behaviour and crime issues that matter in this area**

	Central	Isle of Wight	North & East	Portsmouth	Southampton	Western	Total	No. Surveys
January - March 2009	70%	67%	65%	64%	60%	65%	<b>65%</b>	3594
April - June 2009	68%	67%	68%	61%	59%	67%	<b>65%</b>	3591
July - September 2009	63%	66%	64%	65%	61%	67%	<b>64%</b>	8128



**The police are dealing with the things that matter locally**

	Central	Isle of Wight	North & East	Portsmouth	Southampton	Western	Total	No. Surveys
April - June 2009	71%	69%	66%	63%	65%	70%	<b>67%</b>	3591
July - September 2009	67%	68%	67%	64%	62%	66%	<b>66%</b>	8128



**Overall satisfaction (user satisfaction survey results)**

SPI 1.1 Force Target

Rolling 12 months data relates to: Oct 08 - Sep 09; rolling 3 months data relates to Jul 09 - Sep 09

Overall satisfaction includes burglary, vehicle crime, violent crime and minor injury RTCs

Target 65%	Central	Isle of Wight	North & East	Portsmouth	Southampton	Western	Total	No. Surveys
Rolling 12 months	67%	69%	63%	66%	61%	66%	65%	8127
Rolling 3 months	69%	69%	66%	68%	63%	69%	67%	2446

**Being kept informed (user satisfaction survey results)**

Rolling 12 months data relates to: Oct 08 - Sep 09; rolling 3 months data relates to Jul 09 - Sep 09

Being kept informed includes burglary, vehicle crime, violent crime and minor injury RTCs

	Central	Isle of Wight	North & East	Portsmouth	Southampton	Western	Total	No. Surveys
Rolling 12 months	58%	60%	53%	54%	52%	58%	56%	7862
Rolling 3 months	61%	56%	55%	57%	53%	58%	57%	2375

**Comparative satisfaction of minority ethnic groups**

SPI 1.3

## Providing an excellent service

Data relates to interviews which took place Jul 09 - Sep 09

These figures are for overall satisfaction for burglary, vehicle crime, violent crime, minor injury RTCs and racist incidents

	Completely and very satisfied	Completely, very and fairly satisfied
White	65.7%	84.1%
Minority Ethnic	53.4%	79.0%

### Satisfaction of victims of racist incidents

SPI 1.2

These figures relate to interviews which took place Oct 08 - Sep 09; these will be updated quarterly

Racist incident overall satisfaction = % completely or very satisfied

	Central	Isle of Wight	North & East	Portsmouth	Southampton	Western	Total
%	67%	33%	56%	63%	54%	52%	<b>58%</b>
Number of surveys	27	3	34	40	52	21	<b>177</b>

### MSG information for user satisfaction

iQuanta data for MSG for the 12 months up to March 09 (iQuanta calculate satisfaction % based on those responding that they are completely, very or fairly satisfied)

#### Vehicle crime

Ease of contact	2/8
Actions taken	4/8
Follow up	4/8
Treatment	4/8
OVERALL	4/8

#### Burglary

Ease of contact	2/8
Actions taken	3/8
Follow up	1/8
Treatment	3/8
OVERALL	2/8

#### Violent crime

Ease of contact	2/8
Actions taken	1/8
Follow up	5/8
Treatment	2/8
OVERALL	2/8

#### RTC (minor injury)

Ease of contact	1/8
Actions taken	2/8
Follow up	4/8
Treatment	2/8
OVERALL	2/8

#### All users (excluding racist incidents)

Ease of contact	4/8
Actions taken	2/8
Follow up	3/8
Treatment	2/8
OVERALL	2/8

### Responding to victims of crime

Pledge Point 9

Hampshire Constabulary has always valued victim care. With the introduction of the Policing Pledge, this section will be used not only to inform how we manage our victims of crime, but our progress and actions that relate to the Pledge.

Particular emphasis surrounds compliance with the Victims' Code - keeping people updated - and it is this area that is currently reported on.

Other commitments from the Pledge will be periodically reported on.

#### Summary results of Dip-sample Victim Code Compliance checks

(latest month for available data followed by YTD)

% where victim was informed within 5 days of an investigation being closed

	Central	Isle of Wight	North & East	Portsmouth	Southampton	Western	Crime	Total
August 2009	100%	100%	100%	100%	100%	95%	100%	<b>99%</b>
YTD	100%	100%	100%	99%	100%	98%	100%	<b>100%</b>

% where the victim has been updated on a monthly basis (if applicable)

	Central	Isle of Wight	North & East	Portsmouth	Southampton	Western	Crime	Total
August 2009	95%	90%	90%	100%	100%	100%	100%	<b>96%</b>
YTD	99%	90%	88%	99%	100%	100%	100%	<b>97%</b>

% where the victim was notified upon filing (if applicable)

	Central	Isle of Wight	North & East	Portsmouth	Southampton	Western	Crime	Total
August 2009	90%	96%	95%	100%	100%	100%	100%	<b>97%</b>
YTD	96%	96%	93%	99%	100%	99%	100%	<b>98%</b>

Note: Victim Code Compliance data is published one month in arrears

Note: Absence of data for Operations OCU - the only crime investigations that are retained for resolution by 8 OCU officers are public order or drug offences where the victim is 'The State'. Other crimes are transferred to 'TO' OCUs for any further investigation required. Road traffic collisions resulting in death could be included but this is a small sample. The option to dip-sample other RTCs (minor and serious injury) for contact with injured or aggrieved parties could be used but these are not within the requirements of the Victims' Code. This would only include RPU in the sample and not other 8 OCU teams

#### Victim support status for crimes

## Providing an excellent service

YTD to September 2009	Central	Isle of Wight	North & East	Portsmouth	Southampton	Western	Total	Total %
Victim informed of VSS accepted	1530	395	1464	1072	2068	1325	<b>7854</b>	<b>10.24%</b>
Victim informed of VSS declined	10541	3107	9041	6977	9409	8042	<b>47117</b>	<b>61.40%</b>
VSS aware	474	119	272	143	171	688	<b>1867</b>	<b>2.43%</b>
Victimless crime	3783	1653	3468	3526	3278	3214	<b>18922</b>	<b>24.66%</b>
Not stated	15	63	196	413	225	61	<b>973</b>	<b>1.27%</b>
<b>Total crimes</b>	<b>16343</b>	<b>5337</b>	<b>14441</b>	<b>12131</b>	<b>15151</b>	<b>13330</b>	<b>76733</b>	<b>N/A</b>
<b>% referred</b>	<b>12.26%</b>	<b>9.63%</b>	<b>12.02%</b>	<b>10.02%</b>	<b>14.78%</b>	<b>15.10%</b>	<b>12.67%</b>	<b>N/A</b>

Month of September 2009	Central	Isle of Wight	North & East	Portsmouth	Southampton	Western	Total	Total %
Victim informed of VSS accepted	228	59	207	154	289	206	<b>1143</b>	<b>9.19%</b>
Victim informed of VSS declined	1682	551	1375	1082	1452	1190	<b>7332</b>	<b>58.94%</b>
VSS aware	42	23	34	17	36	117	<b>269</b>	<b>2.16%</b>
Victimless crime	592	489	549	529	547	492	<b>3198</b>	<b>25.71%</b>
Not stated	1	17	196	133	97	53	<b>497</b>	<b>4.00%</b>
<b>Total crimes</b>	<b>2545</b>	<b>1139</b>	<b>2361</b>	<b>1915</b>	<b>2421</b>	<b>2058</b>	<b>12439</b>	<b>N/A</b>
<b>% referred</b>	<b>10.61%</b>	<b>7.20%</b>	<b>10.21%</b>	<b>8.93%</b>	<b>13.42%</b>	<b>15.69%</b>	<b>11.35%</b>	<b>N/A</b>

### Letters of appreciation

	Central	Isle of Wight	North & East	Portsmouth	Southampton	Western	Crime	Operations	Other	Total
April 2009	9	5	13	27	0	5	5	13	11	<b>88</b>
May 2009	10	11	13	0	3	11	2	6	31	<b>87</b>
June 2009	9	13	12	3	7	11	15	3	19	<b>92</b>
July 2009	21	7	24	10	3	7	9	0	0	<b>81</b>
August 2009	21	11	13	6	4	11	0	41	3	<b>110</b>
<b>Total</b>	<b>70</b>	<b>47</b>	<b>75</b>	<b>46</b>	<b>17</b>	<b>45</b>	<b>31</b>	<b>63</b>	<b>64</b>	<b>458</b>

Note: These figures are published one month in arrears

### Reports of incivility

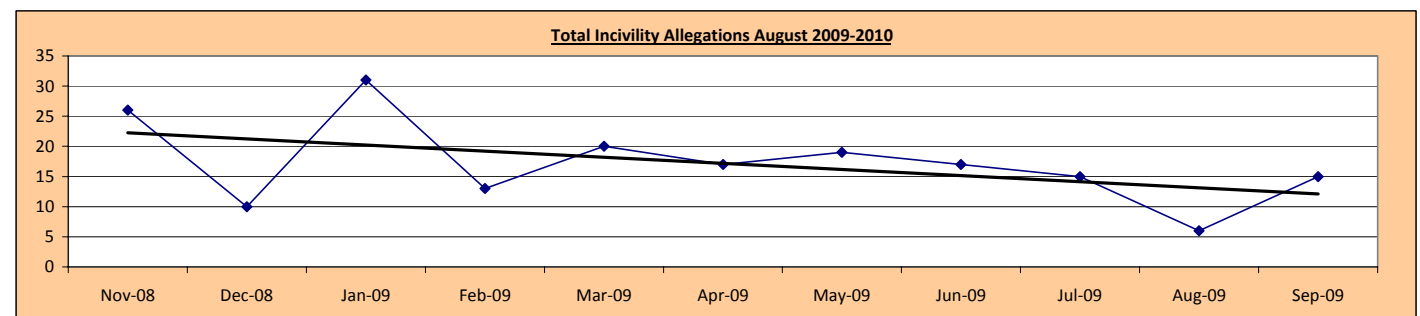
Pledge Point 10

	Central	Isle of Wight	North & East	Portsmouth	Southampton	Western	Crime	Operations	Other	Total
April 2009	2	3	1	3	0	2	0	6	0	<b>17</b>
May 2009	2	4	5	1	2	3	0	1	1	<b>19</b>
June 2009	7	2	1	0	0	3	0	4	0	<b>17</b>
July 2009	1	2	1	3	1	2	0	5	0	<b>15</b>
August 2009	0	1	1	0	4	0	0	0	0	<b>6</b>
September 2009	0	1	2	7	3	1	0	1	0	<b>15</b>
<b>Total</b>	<b>12</b>	<b>13</b>	<b>11</b>	<b>14</b>	<b>10</b>	<b>11</b>	<b>0</b>	<b>17</b>	<b>1</b>	<b>89</b>

NOTE: OCU complaints totals may include complaints regarding officers who are serving within the area but are not located at that OCU

NOTE: Data/figures may change due to additional or new information and there may be multiple allegations per complaint

By month	Nov 08	Dec 08	Jan 09	Feb 09	Mar 09	Apr 09	May 09	Jun 09	Jul 09	Aug 09	Sep 09
Incivility	26	10	31	13	20	17	19	17	15	6	15



This graph shows the downward trend for the volume of incivility allegations. The "Linear (incivility)" shows the trajectory of this downward trend

### Allegations and their resolutions

Data for September 2009

Locally resolved by OCU	78
Locally resolved by PSD	7
Withdrawn	3
Dispensed by IPCC	10
Unsubstantiated	16
Substantiated	6
<b>Total</b>	<b>120</b>

### Responding to public contact

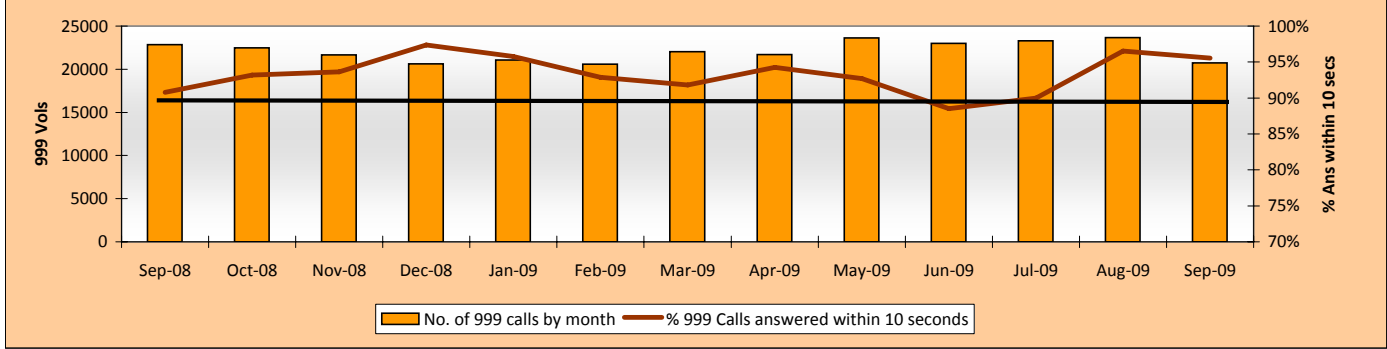
Pledge Points 5 & 6

**Call Volumes:** Target is to answer 90% of 999 calls within 10 seconds and 90% of Non-Emergency calls within 30 seconds

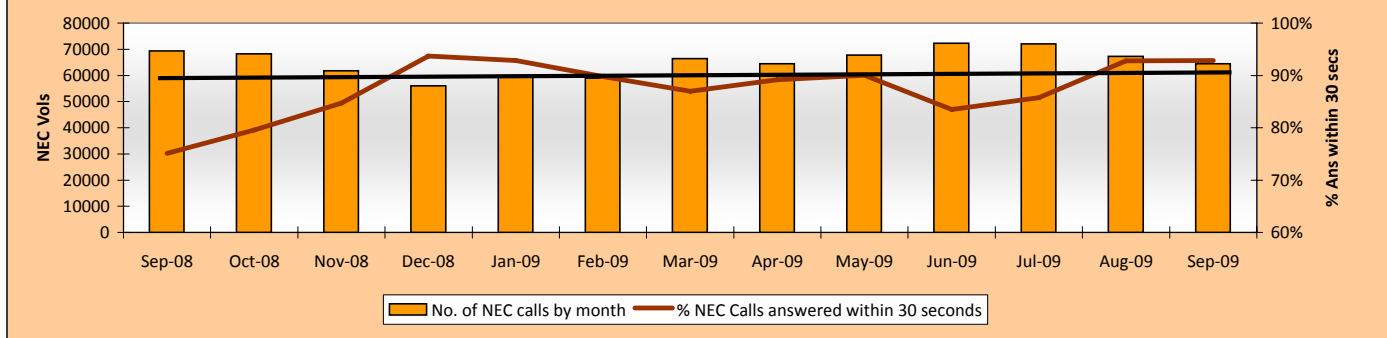
999 Call Volumes & Service Level

## Providing an excellent service

### 999 Call Volumes & Service Level



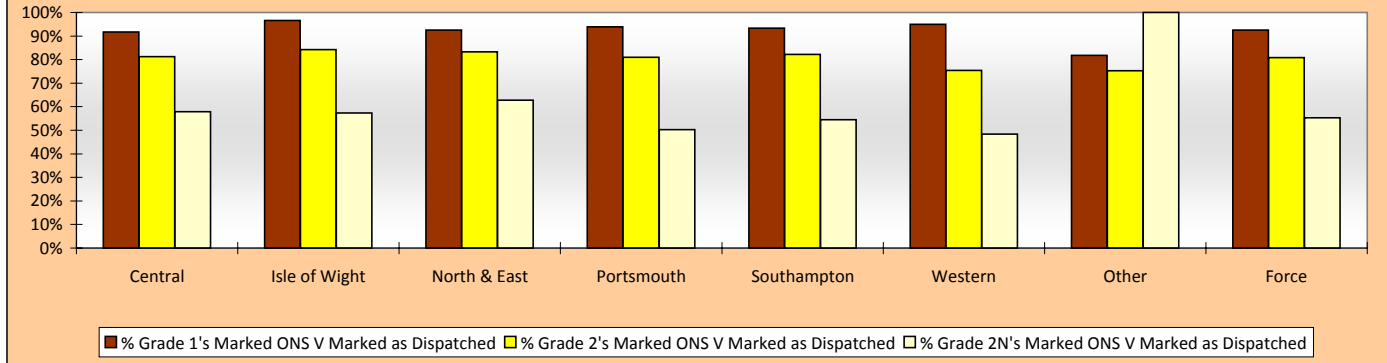
### Non-Emergency Call Volumes & Service Level



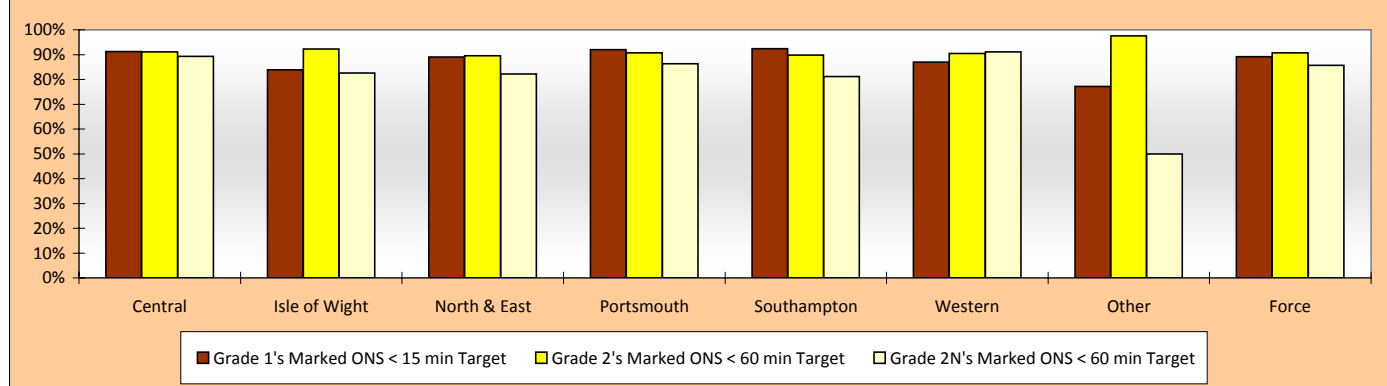
**Officers Attended Within Target:** This is the time from an incident being created to the 1st Officer being marked on scene on Altaris.

The % of Officers attending within target is based on the number of incidents marked on scene within target vs. the number of incidents marked on scene. If an incident is marked as having an officer dispatched, but is then subsequently not marked as On Scene, these incidents are excluded from the % Attendance.

### % Incidents Marked On Scene V's Incidents Marked As Dispatched - September 2009



### % Grade 1 & Grade 2 Incidents Attended Within Target - September 2009

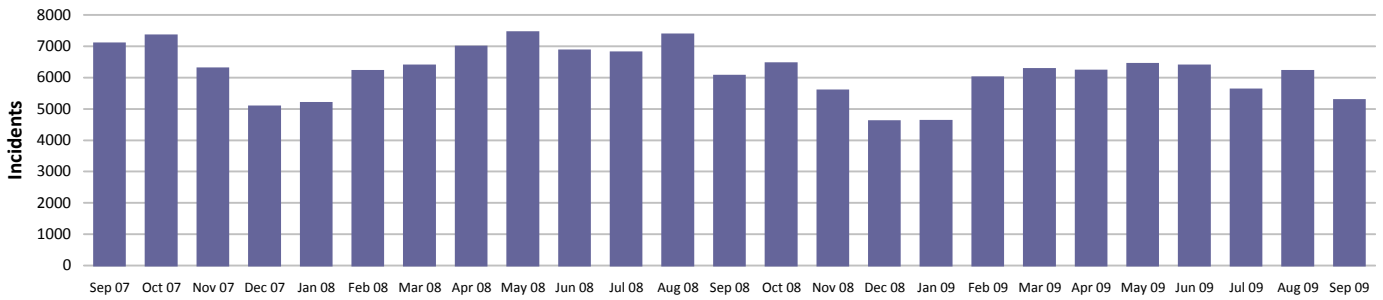


# An active presence in every neighbourhood

## Rowdy & nuisance behaviour

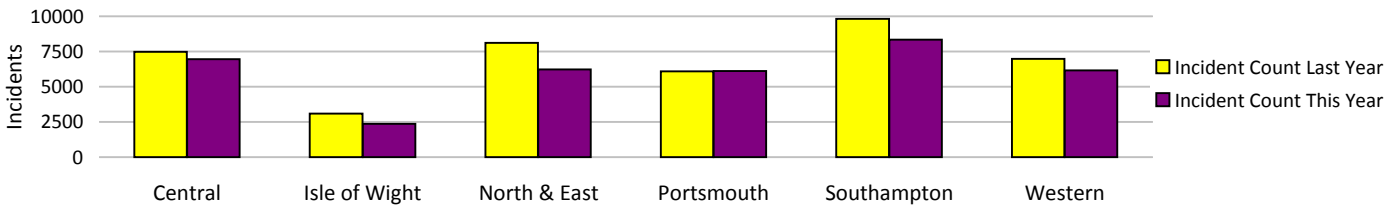
Force Target

This year the decision has been made to use RMS as the source of this data, as opposed to the NSIR return data (the figures published in the 2008/2009 Force Performance Summary used the NSIR data)



Incidents	Central	Isle of Wight	North & East	Portsmouth	Southampton	Western	Total
<b>YTD Incidents</b>	6946	2363	6228	6111	8334	6167	<b>36149</b>
YTD Target	6969	2682	7267	5740	8864	6134	<b>37656</b>
<b>YTD 08/09 Incidents</b>	7482	3080	8104	6082	9822	6969	<b>41539</b>
This month	1016	349	912	882	1233	890	<b>5282</b>
% change from 08/09	-7.16%	-23.28%	-23.15%	0.48%	-15.15%	-11.51%	<b>-12.98%</b>

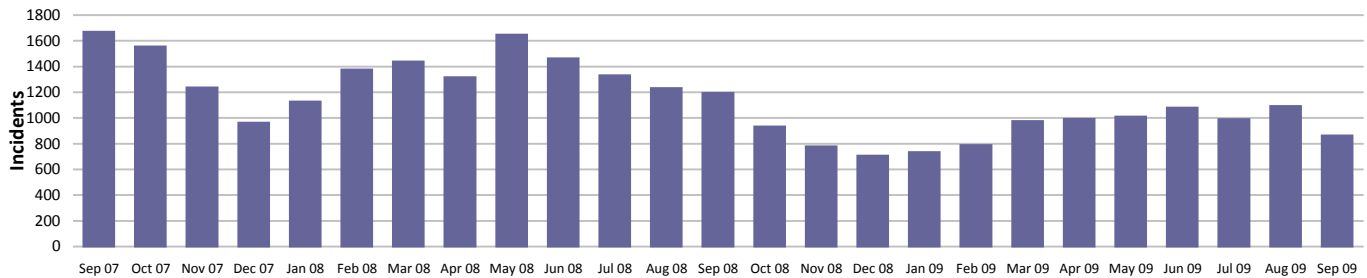
Rowdy & nuisance behaviour relates to occurrence types: Inappropriate use of Fireworks, Rowdy & Inconsiderate, Substance Misuse and Street Drinking



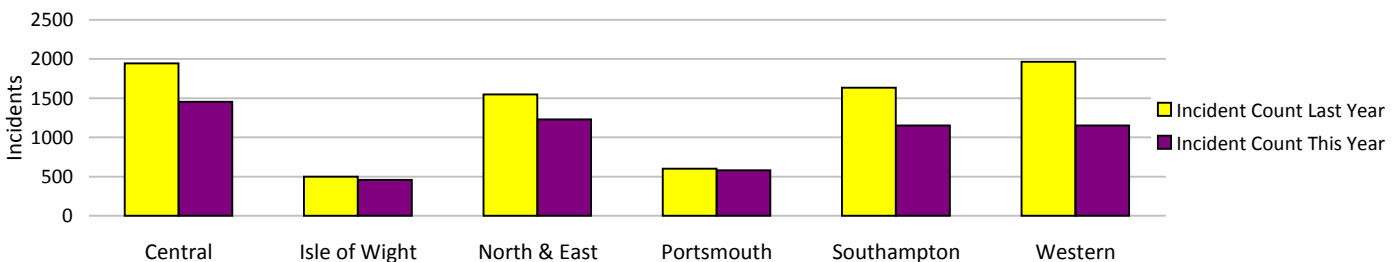
## Vehicle nuisance/inappropriate vehicle use

Force Target

This year the decision has been made to use RMS as the source of this data, as opposed to the NSIR return data (the figures published in the 2008/2009 Force Performance Summary used the NSIR data)



Incidents	Central	Isle of Wight	North & East	Portsmouth	Southampton	Western	Total
<b>YTD Incidents</b>	1456	459	1231	581	1152	1153	<b>6032</b>
YTD Target	1745	502	1526	647	1419	1668	<b>7506</b>
<b>YTD 08/09 Incidents</b>	1945	497	1547	602	1636	1965	<b>8192</b>
This month	176	77	195	71	176	169	<b>864</b>
% change from 08/09	-25.14%	-7.65%	-20.43%	-3.49%	-29.58%	-41.32%	<b>-26.37%</b>



Note: MSG data is always published a month in arrears.

For an explanation of this data, refer to the Summary on page 2

September 2009

## An active presence in every neighbourhood

### Safer Neighbourhood Teams (SNT)

Policing pledge 3

Abstractions	Central	Isle of Wight	North & East	Portsmouth	Southampton	Western	Total
April 2009	3.02%	2.32%	3.16%	3.80%	1.63%	3.30%	
May 2009	3.33%	2.95%	2.98%	3.01%	1.88%	2.83%	<b>2.86%</b>
June 2009	3.16%	1.15%	2.54%	4.62%	2.77%	3.40%	<b>3.05%</b>
July 2009	3.44%	2.32%	4.02%	4.92%	3.24%	<b>6.46%</b>	<b>4.16%</b>
August 2009	<b>6.66%</b>	<b>16.17%</b>	<b>11.25%</b>	3.13%	2.08%	3.37%	<b>6.40%</b>
September 2009	3.99%	4.03%	4.41%	1.00%	3.16%	3.64%	<b>3.48%</b>

Target = NPT visible & accessible at least 80% of time (maximum 5% abstractions)

In August 2009 a review of Abstraction data was undertaken to ensure a consistent approach was used across the Force. Prior to this date individual OCUs used slightly differing methodology therefore it is not possible to compare the data for April - July with data from August onwards, or to compare the data for individual OCU's with one another prior to August.

### Community engagement data

Anticipated initially for July, there have been difficulties in obtaining the data which should now be available from the autumn

### Safer Neighbourhood Team Personnel

	Inspector	Segeant	Constable	PCSO	Total
Central	10	28	89	78	<b>205</b>
IOW	2	9	32	28	<b>71</b>
North and East	11	17	76	68	<b>172</b>
Portsmouth	4	12	50	50	<b>116</b>
Southampton	6	14	60	60	<b>140</b>
Western	7	19	81	63	<b>170</b>
<b>Total</b>	<b>40</b>	<b>99</b>	<b>388</b>	<b>347</b>	<b>874</b>

SNT strength by OCU - Police

	Central	Isle of Wight	North & East	Portsmouth	Southampton	Western
Strength	120.03	40.6	100.3	64.65	78.2	103.22

SNT establishment and strength by OCU - PCSOs

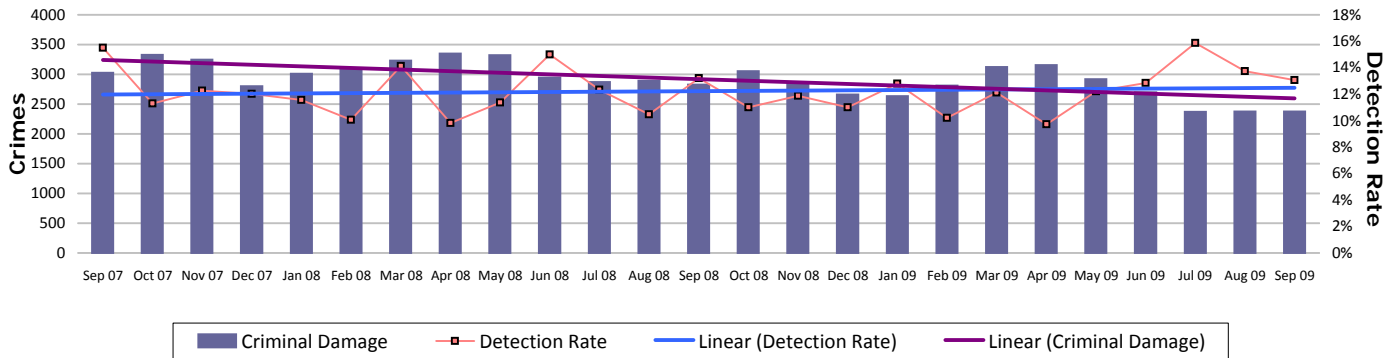
	Central	Isle of Wight	North & East	Portsmouth	Southampton	Western
Establishment	74	28	67	50	59	59
Strength	78	27.09	67.4	49.12	59.35	61.94
Vacancies	-4	0.91	-0.4	0.88	-0.35	-2.94

Note: Personnel Planning are no longer able to provide 'length of service' information due to the implementation of the new organisation structure into Delphi. This has meant that all Staff and Police Officers have a position start date of 8 July 2009

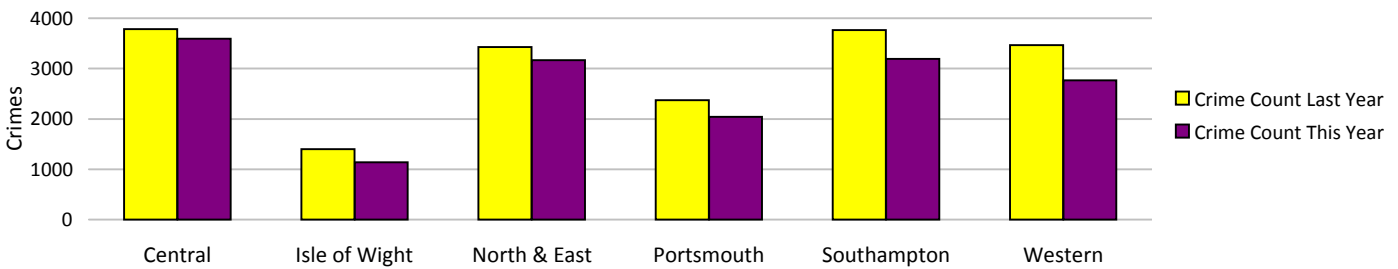
# An active presence in every neighbourhood

## Criminal damage

Force Target

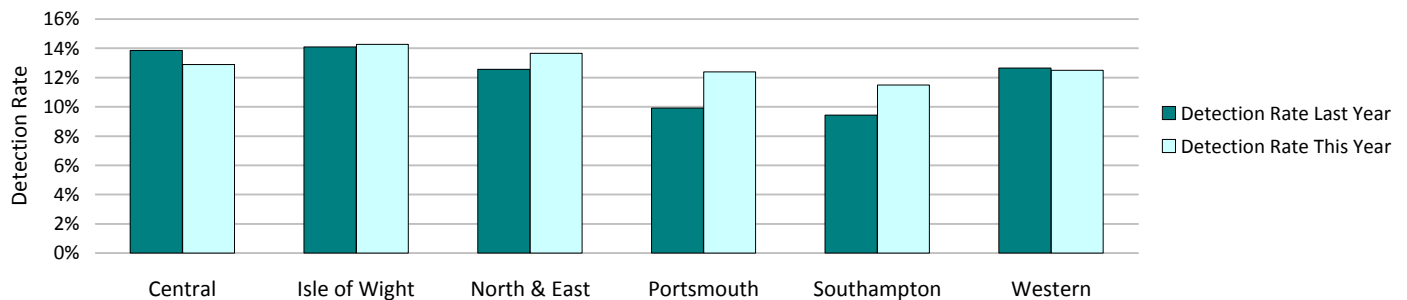


Crimes	Central	Isle of Wight	North & East	Portsmouth	Southampton	Western	Total
<b>YTD Crimes</b>	3592	1136	3168	2042	3191	2769	<b>15898</b>
YTD Target	3784	1258	3298	2327	3326	3171	<b>17164</b>
<b>YTD 08/09 Crimes</b>	3785	1398	3425	2371	3762	3464	<b>18205</b>
This month	492	195	451	308	503	425	<b>2374</b>
% change from 08/09	-5.10%	-18.74%	-7.50%	-13.88%	-15.18%	-20.06%	<b>-12.67%</b>
MSG position	<b>14 of 15</b>	10 of 15	<b>13 of 15</b>	10 of 15	<b>14 of 15</b>	6 of 15	<b>8 of 8</b>
OCU actual	3.95	3.89	3.49	4.71	6.27	3.15	<b>4.03</b>
MSG average	3.32	3.77	3.15	4.40	4.90	3.31	<b>3.54</b>



Detections	Central	Isle of Wight	North & East	Portsmouth	Southampton	Western	Total
<b>YTD Detection Rate</b>	12.89%	14.26%	13.67%	12.39%	11.50%	12.50%	<b>12.73%</b>
This month	13.41%	12.82%	15.52%	13.64%	10.74%	12.47%	<b>13.06%</b>
<b>YTD 08/09 Detections</b>	13.84%	14.09%	12.55%	9.91%	9.44%	12.64%	<b>11.97%</b>
MSG position	<b>8 of 15</b>	<b>8 of 15</b>	12 of 15	<b>6 of 15</b>	<b>11 of 15</b>	9 of 15	<b>7 of 8</b>
OCU actual	12.56%	13.97%	12.20%	11.77%	10.77%	12.35%	<b>12.07%</b>
MSG average	13.42%	14.69%	14.34%	11.66%	12.09%	13.81%	<b>14.40%</b>

Note: Detections refer to Sanction Detections ONLY



Note: MSG data is always published a month in arrears.

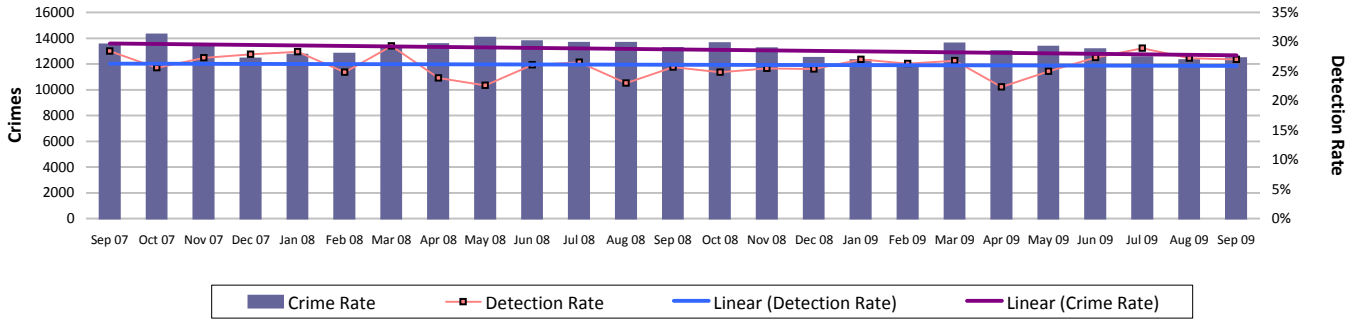
For an explanation of this data, refer to the Summary on page 2

September 2009

# Catching criminals and managing offenders

## All crime

Force Target



Crimes	Central	Isle of Wight	North & East	Portsmouth	Southampton	Western	Total
<b>YTD Crimes</b>	16343	5337	14442	12131	15152	13333	<b>76738</b>
YTD Target	16606	5313	15428	12702	17092	14348	<b>81490</b>
<b>YTD 08/09 Crimes</b>	16470	5804	15363	12506	16897	14780	<b>81820</b>
This month	2545	1139	2362	1915	2422	2060	<b>12443</b>
% change from 08/09	-0.77%	-8.05%	-5.99%	-3.00%	-10.33%	-9.79%	<b>-6.21%</b>
MSG position	<b>14 of 15</b>	<b>12 of 15</b>	<b>8 of 15</b>	<b>13 of 15</b>	<b>13 of 15</b>	<b>7 of 15</b>	<b>6 of 8</b>
OCU actual	18.43	19.23	16.40	29.89	32.08	16.30	<b>20.48</b>
MSG average	16.69	17.57	16.04	24.31	26.63	16.07	<b>18.68</b>



Detections	Central	Isle of Wight	North & East	Portsmouth	Southampton	Western	Total
<b>YTD Detection Rate</b>	<b>24.50%</b>	30.75%	26.94%	26.84%	26.52%	25.19%	<b>26.28%</b>
This month	25.19%	33.19%	29.42%	26.48%	25.68%	25.19%	<b>27.02%</b>
<b>YTD 08/09 Detections</b>	23.70%	30.94%	26.10%	25.53%	23.44%	22.22%	<b>24.62%</b>
Detection Targets	25.00%	30.00%	25.50%	25.50%	25.00%	25.00%	<b>25.00%</b>
MSG position	<b>12 of 15</b>	<b>6 of 15</b>	<b>11 of 15</b>	<b>5 of 15</b>	<b>8 of 15</b>	<b>12 of 15</b>	<b>7 of 8</b>
OCU actual	24.27%	32.42%	26.12%	26.46%	25.42%	25.43%	<b>25.91%</b>
MSG average	27.43%	30.67%	28.57%	25.33%	26.22%	26.97%	<b>28.76%</b>

Note: Detections refer to Sanction Detections ONLY

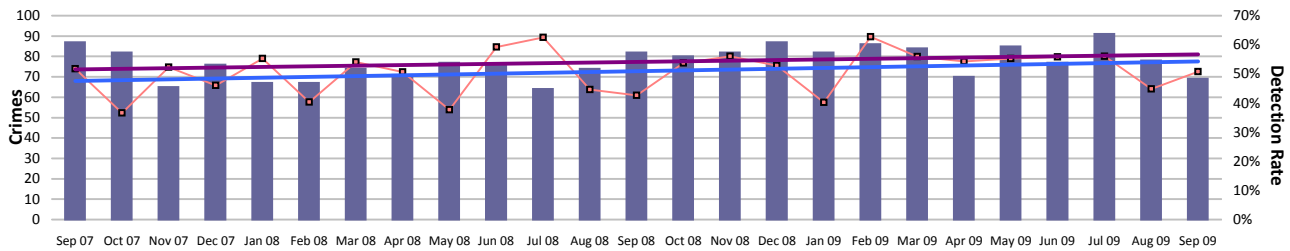


# Catching criminals and managing offenders

## Serious violent crime

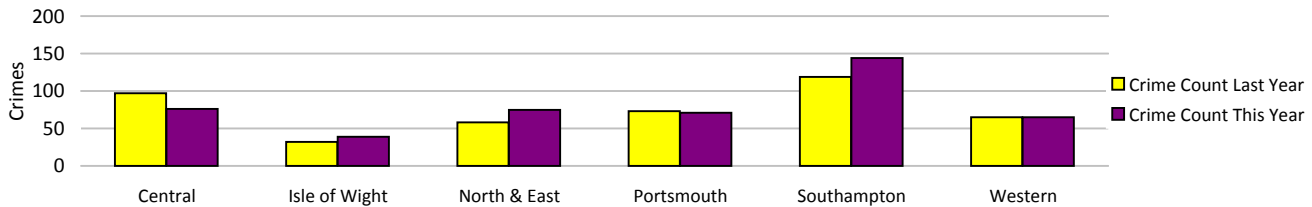
SPI 5.1 Force Target

Serious violent crime consists of crimsec codes 1, 2, 4.1-4.4, 4.6, 4.8, 5A, 5B, 5C, 8F, 8H and 37.1



Legend: Serious Violent Crime Rate (Bar), Detection Rate (Line with squares), Linear (Serious Violent Crime Rate) (Dashed line), Linear (Detection Rate) (Solid line)

Crimes	Central	Isle of Wight	North & East	Portsmouth	Southampton	Western	Total
YTD Crimes	76	39	75	71	144	65	470
YTD Target	86	31	72	91	118	56	455
YTD 08/09 Crimes	97	32	58	73	119	65	444
This month	11	4	11	11	21	11	69
% change from 08/09	-21.65%	21.88%	29.31%	-2.74%	21.01%	0.00%	5.86%
MSG position	8 of 15	14 of 15	12 of 15	2 of 15	7 of 15	4 of 15	6 of 8
OCU actual	0.09	0.22	0.10	0.19	0.29	0.06	0.13
MSG average	0.10	0.15	0.07	0.31	0.33	0.09	0.12



Detections	Central	Isle of Wight	North & East	Portsmouth	Southampton	Western	Total
YTD Detection Rate	65.79%	53.85%	64.00%	47.89%	40.28%	58.46%	52.98%
This month	36.36%	75.00%	63.64%	45.45%	42.86%	63.64%	50.72%
YTD 08/09 Detections	49.48%	68.75%	65.52%	42.47%	42.02%	44.62%	49.10%
Detection Targets	57.00%	60.00%	56.00%	41.00%	45.00%	50.00%	50.00%
MSG position	3 of 15	6 of 15	8 of 15	5 of 15	3 of 15	6 of 15	1 of 8
OCU actual	68.24%	55.13%	55.49%	41.38%	45.42%	56.17%	52.09%
MSG average	53.70%	50.63%	55.92%	38.44%	39.44%	56.62%	46.91%

Note: Detections refer to Sanction Detections ONLY



## Serious Violent offences OBJ

SPI 6.1

Data to July 2009

	Recorded Crime		Total OBJTs		Hampshire		Rolling Average	
	Month	RA	Month	RA	Month	RA	MSG	E&W
Attempted murder	1	12	0	3	0.0%	25.0%	20.0%	21.4%
Death by aggravated vehicle taking	0	0	0	0	0.0%	0.0%	0.0%	64.3%
Causing death by dangerous driving etc	2	10	0	14	0.0%	140.0%	73.8%	72.9%
Homicide and child destruction	5	19	1	19	20.0%	100.0%	148.2%	134.4%
Wounding and GBH without intent	76	954	21	217	27.6%	22.8%	23.1%	19.5%

	Convictions	Caution	TICs	Cannabis Warning	PNDs
	Rolling 12 month Average				
Attempted murder	3	0	0	0	0
Death by aggravated vehicle taking	0	0	0	0	0
Causing death by dangerous driving etc	14	0	0	0	0
Homicide and child destruction	19	0	0	0	0
Wounding and GBH without intent	212	5	0	0	0

RA = Rolling Annual  
E&W = England & Wales

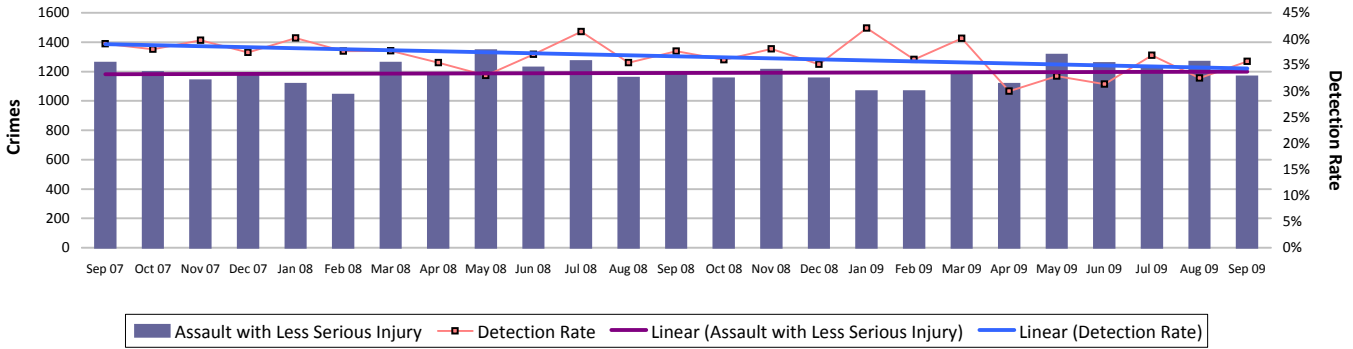
Note: MSG data is always published a month in arrears. For an explanation of this data, refer to the Summary on page 2

# Catching criminals and managing offenders

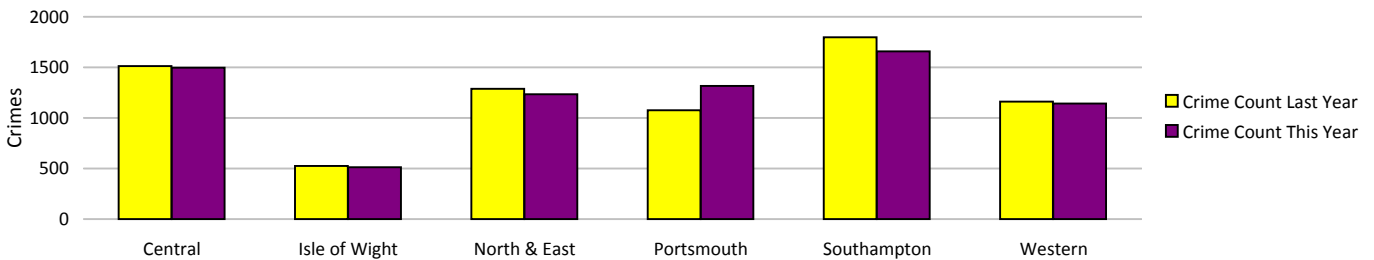
## Assault with less serious injury

SPI 5.3 Force Target

Assault with less serious injury consists of crimsec codes 8G and 8J

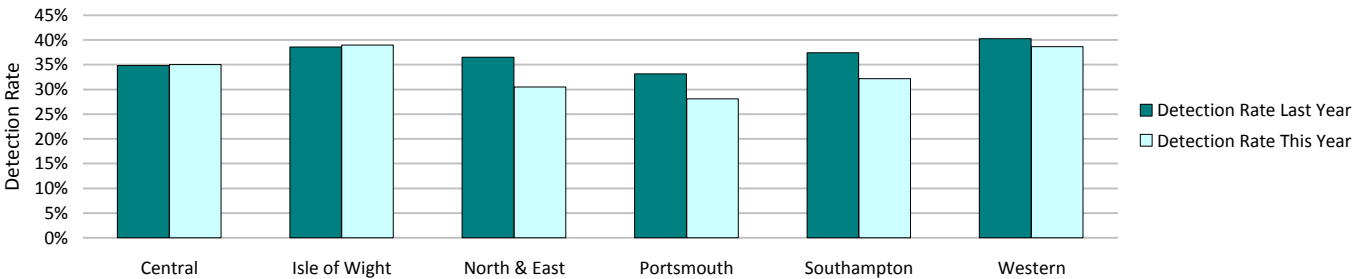


Crimes	Central	Isle of Wight	North & East	Portsmouth	Southampton	Western	Total
<b>YTD Crimes</b>	1496	513	1233	<b>1318</b>	1658	1141	<b>7359</b>
YTD Target	1455	487	1226	1000	1630	1119	<b>6916</b>
<b>YTD 08/09 Crimes</b>	1513	526	1287	1077	1799	1160	<b>7362</b>
This month	268	58	195	234	227	184	<b>1166</b>
% change from 08/09	-1.12%	-2.47%	-4.20%	22.38%	-7.84%	-1.64%	<b>-0.04%</b>
MSG position	<b>14 of 15</b>	10 of 15	<b>13 of 15</b>	<b>13 of 15</b>	<b>15 of 15</b>	10 of 15	<b>8 of 8</b>
OCU actual	1.74	1.94	1.42	3.14	3.88	1.49	<b>2.04</b>
MSG average	1.36	1.82	1.25	2.21	2.44	1.42	<b>1.58</b>



Detections	Central	Isle of Wight	North & East	Portsmouth	Southampton	Western	Total
YTD Detection Rate	35.03%	38.99%	30.49%	28.07%	32.21%	38.65%	<b>33.22%</b>
This month	36.19%	62.07%	31.79%	30.34%	31.72%	42.39%	<b>35.68%</b>
<b>YTD 08/09 Detections</b>	34.83%	38.59%	36.52%	33.15%	37.41%	40.26%	<b>36.63%</b>
MSG position	<b>14 of 15</b>	10 of 15	12 of 15	<b>14 of 15</b>	<b>5 of 15</b>	4 of 15	<b>6 of 8</b>
OCU actual	34.50%	42.37%	34.67%	28.39%	38.66%	43.87%	<b>36.45%</b>
MSG average	40.85%	44.35%	41.54%	35.93%	35.31%	39.92%	<b>41.90%</b>

Note: Detections refer to Sanction Detections ONLY

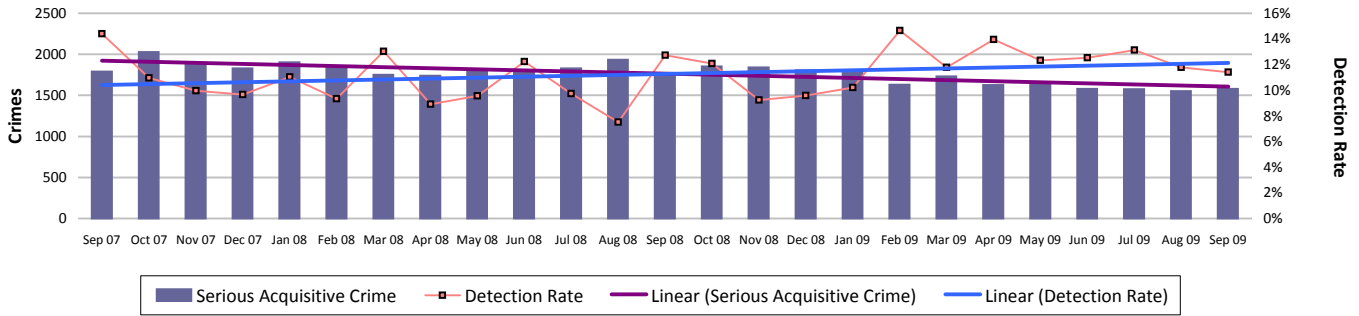


# Catching criminals and managing offenders

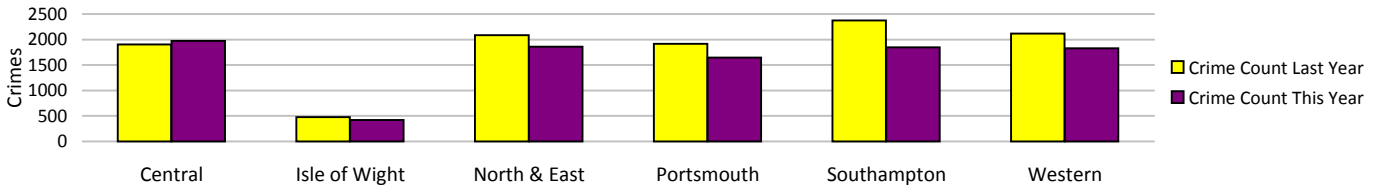
## Serious acquisitive crime

SPI 5.2 Force Target

Serious acquisitive crime consists of crimsec codes 28, 29, 34A, 34B, 37/2, 45 and 48



Crimes	Central	Isle of Wight	North & East	Portsmouth	Southampton	Western	Total
YTD Crimes	1970	423	1857	1644	1845	1831	9570
YTD Target	2051	460	2201	1976	2452	2088	11229
YTD 08/09 Crimes	1901	479	2083	1918	2373	2115	10869
This month	346	75	324	249	322	263	1579
% change from 08/09	3.63%	-11.69%	-10.85%	-14.29%	-22.25%	-13.43%	-11.95%
MSG position	6 of 15	1 of 15	5 of 15	5 of 15	4 of 15	10 of 15	3 of 8
OCU actual	2.17	1.50	2.10	4.01	3.95	2.23	2.54
MSG average	2.60	2.28	2.49	4.78	4.81	2.23	3.00



Detections	Central	Isle of Wight	North & East	Portsmouth	Southampton	Western	Total
Target >15%							
YTD Detection Rate	10.46%	15.37%	13.19%	14.42%	12.36%	11.91%	12.53%
This month	7.23%	6.67%	11.42%	10.44%	18.63%	10.27%	11.40%
YTD 08/09 Detections	10.47%	14.41%	9.55%	10.06%	9.44%	9.98%	10.07%
MSG position	10 of 15	10 of 15	12 of 15	4 of 15	10 of 15	12 of 15	5 of 8
OCU actual	12.11%	14.16%	10.29%	14.23%	10.68%	12.01%	11.93%
MSG average	13.30%	15.75%	13.34%	11.84%	13.21%	13.46%	13.55%

Note: Detections refer to Sanction Detections ONLY



## Serious Acquisitive offences OBTJ

SPI 6.2

Data to July 2009

	Recorded Crime		Total OBTJs		Hampshire		Rolling Average	
	Month	RA	Month	RA	Month	RA	MSG	E&W
Aggravated burglary in a dwelling	4	45	1	10	25.0%	22.2%	19.6%	23.3%
Aggravated vehicle taking	20	249	8	196	40.0%	78.7%	78.6%	71.9%
Burglary in a dwelling	427	5848	78	999	18.3%	17.1%	15.3%	14.4%
Robbery	86	1167	23	234	26.7%	20.1%	22.2%	17.6%
Theft from a vehicle	802	10709	36	402	4.5%	3.8%	7.6%	8.6%
Theft of a motor vehicle	232	2847	29	332	12.5%	11.7%	12.8%	12.9%

	Convictions	Caution	TICs	Cannabis Warnings	PNDs
Rolling 12 month Average					
Aggravated burglary in a dwelling	10	0	0	0	0
Aggravated vehicle taking	175	21	0	0	0
Burglary in a dwelling	535	31	433	0	0
Robbery	228	3	3	0	0
Theft from a vehicle	206	77	119	0	0
Theft of a motor vehicle	265	40	27	0	0

RA = Rolling Annual  
E&W = England & Wales

Note: MSG data is always published a month in arrears. For an explanation of this data, refer to the Summary on page 2

## Catching criminals and managing offenders

### Serious acquisitive crime breakdown

#### Robbery

Year to date	Central	Isle of Wight	North & East	Portsmouth	Southampton	Western	Total
Crimes	50	15	75	117	185	77	519
08/09 crimes	55	10	85	114	213	85	562
% change from 08/09	-9.09%	50.00%	-11.76%	2.63%	-13.15%	-9.41%	-7.65%
MSG position	3 of 15	5 of 15	8 of 15	3 of 15	6 of 15	10 of 15	3 of 8
Detection rate	40.00%	33.33%	29.33%	31.62%	21.62%	18.18%	26.59%
MSG position	1 of 15	9 of 15	11 of 15	7 of 15	10 of 15	6 of 15	4 of 8
<b>September 2009</b>	<b>Central</b>	<b>Isle of Wight</b>	<b>North &amp; East</b>	<b>Portsmouth</b>	<b>Southampton</b>	<b>Western</b>	<b>Total</b>
Crimes	10	2	14	12	40	12	90
Detection rate	20.00%	0.00%	28.57%	16.67%	12.50%	16.67%	16.67%

#### Dwelling burglary

Year to date	Central	Isle of Wight	North & East	Portsmouth	Southampton	Western	Total
Crimes	582	135	571	488	548	441	2765
08/09 crimes	511	178	631	656	466	489	2931
% change from 08/09	13.89%	-24.16%	-9.51%	-25.61%	17.60%	-9.82%	-5.66%
MSG position	4 of 15	2 of 15	6 of 15	5 of 15	5 of 15	2 of 15	2 of 8
Detection rate	17.35%	14.07%	16.99%	25.00%	18.61%	24.72%	19.89%
MSG position	1 of 15	6 of 15	11 of 15	1 of 15	8 of 15	4 of 15	3 of 8
<b>September 2009</b>	<b>Central</b>	<b>Isle of Wight</b>	<b>North &amp; East</b>	<b>Portsmouth</b>	<b>Southampton</b>	<b>Western</b>	<b>Total</b>
Crimes	112	29	103	78	103	67	492
Detection rate	13.39%	6.90%	15.53%	17.95%	38.83%	11.94%	19.31%

#### Vehicle crime

Year to date	Central	Isle of Wight	North & East	Portsmouth	Southampton	Western	Total
Crimes	1338	273	1211	1039	1112	1313	6286
08/09 crimes	1335	291	1367	1148	1694	1541	7376
% change from 08/09	0.22%	-6.19%	-11.41%	-9.49%	-34.36%	-14.80%	-14.78%
MSG position	6 of 15	1 of 15	6 of 15	7 of 15	5 of 15	14 of 15	3 of 8
Detection rate	6.35%	15.02%	10.40%	7.51%	7.73%	7.24%	8.13%
MSG position	13 of 15	9 of 15	10 of 15	9 of 15	11 of 15	13 of 15	5 of 8
<b>September 2009</b>	<b>Central</b>	<b>Isle of Wight</b>	<b>North &amp; East</b>	<b>Portsmouth</b>	<b>Southampton</b>	<b>Western</b>	<b>Total</b>
Crimes	224	44	207	159	179	184	997
Detection rate	3.57%	6.82%	8.21%	6.29%	8.38%	9.24%	7.02%
Detection numbers	8	3	17	10	15	17	70

#### Theft of a motor vehicle

Year to date	Central	Isle of Wight	North & East	Portsmouth	Southampton	Western	Total
Crimes	317	74	333	198	272	228	1422
MSG position	6 of 15	3 of 15	5 of 15	3 of 15	6 of 15	4 of 15	1 of 8
Detection rate	16.72%	39.19%	16.52%	20.20%	12.50%	23.25%	18.57%
MSG position	8 of 15	4 of 15	14 of 15	3 of 15	9 of 15	3 of 15	4 of 8
<b>September 2009</b>	<b>Central</b>	<b>Isle of Wight</b>	<b>North &amp; East</b>	<b>Portsmouth</b>	<b>Southampton</b>	<b>Western</b>	<b>Total</b>
Crimes	54	9	51	41	36	29	220
Detection rate	7.41%	33.33%	27.45%	9.76%	13.89%	31.03%	17.73%
Detection numbers	4	3	14	4	5	9	39

#### Theft from a motor vehicle

Year to date	Central	Isle of Wight	North & East	Portsmouth	Southampton	Western	Total
Crimes	1021	199	878	841	840	1085	4864
MSG position	9 of 15	3 of 15	6 of 15	8 of 15	5 of 15	14 of 15	4 of 8
Detection rate	3.13%	6.03%	8.09%	4.52%	6.19%	3.87%	5.08%
MSG position	13 of 15	12 of 15	10 of 15	10 of 15	10 of 15	13 of 15	7 of 8
<b>September 2009</b>	<b>Central</b>	<b>Isle of Wight</b>	<b>North &amp; East</b>	<b>Portsmouth</b>	<b>Southampton</b>	<b>Western</b>	<b>Total</b>
Crimes	170	35	156	118	143	155	777
Detection rate	2.35%	0.00%	1.92%	5.08%	6.99%	5.16%	3.99%
Detection numbers	4	0	3	6	10	8	31

Robbery, dwelling burglary and vehicle crime are the component parts of serious acquisitive crime. These individual crime types do not have targets.

## Catching criminals and managing offenders

### Gun crime rate

	Central	Isle of Wight	North & East	Portsmouth	Southampton	Western	Total	MSG position 30 Apr 09	SPI 5.5
YTD September 2009	26	3	9	11	10	6	65	2 of 8	
YTD September 2008	25	1	10	13	9	13	71		
% change from 08/09	4.0%	200.0%	-10.0%	-15.4%	11.1%	-53.8%	-8.5%		

Gun crime figures published reflect the APACS technical definition which includes "where the victim is convinced of the presence of a firearm, even if it is concealed and there is evidence of the suspect's intention to create this impression".

### Knife crime rate

	Central	Isle of Wight	North & East	Portsmouth	Southampton	Western	Total	MSG position 31 Mar 09	SPI 5.6
YTD September 2009	54	13	71	57	104	38	337	3 of 8	
YTD September 2008	73	19	69	64	117	53	395		
% change from 08/09	-26.0%	-31.6%	2.9%	-10.9%	-11.1%	-28.3%	-14.7%		

**Knife** = knife or other sharp instrument (including broken glass/bottles) piercing the skin or, for threats and attempts, instruments normally capable of piercing the skin. The measure for counting broken glass/bottles has changed for 09-10 with less occurrences being counted by the Home Office. Knife crime figures published reflect the APACS technical definition which includes "where the victim is convinced of the presence of a knife, even if it is concealed and there is evidence of the suspect's intention to create this impression".

### Serious sexual crime OBJ rate

The table below shows % of persons brought to justice for serious sexual crimes against the total number of serious sexual crimes

OBJ Crime category	Feb-09	Mar-09	Apr-09	May-09	Jun-09	Jul-09	Rolling average
Tier 1: Serious Sexual Offences	44%	38%	29%	34%	35%	11%	37%

### Murder offences

	Central	Isle of Wight	North & East	Portsmouth	Southampton	Western	Total	SPI 5.4
YTD September 2009	4	2	1	1	1	2	11	
YTD Domestic Murders 2009	1	0	0	0	0	1	2	
YTD September 2008	0	0	0	0	3	1	4	
YTD Domestic Murders 2008	0	0	0	0	3	1	4	

### FIU1 submissions

	Central	Isle of Wight	North & East	Portsmouth	Southampton	Western	Total
YTD September 2009	122	123	128	96	133	94	696
Number of eligible detections	1934	908	1933	1821	1962	1591	10149
% submission rate	6%	14%	7%	5%	7%	6%	7%

	Central	Isle of Wight	North & East	Portsmouth	Southampton	Western	Total
September 2009	18	27	35	17	21	10	128
Number of eligible detections	293	250	351	260	320	216	1690
% submission rate	6%	11%	10%	7%	7%	5%	8%

Eligible crimes are those covered by Proceeds of Crime Act (POCA)

### Prolific and other Priority Offenders (PPOs) convictions

Number of convictions recorded against identified, prolific and other priority offenders (PPOs)

	Jan 2009	Feb 2009	Mar 2009	Apr 2009	May 2009	June 2009	July 2009	Aug 2009
Persistent Young Offenders	94	83	80	99	78	83	73	49
Priority Prolific Offenders	27	40	25	39	23	32	23	33
Persistent Priority Prolific Young Offenders	3	2	2	6	2	6	4	2
Young Offenders	230	162	191	195	175	185	207	172

### Class A drugs sanction detections

	Central	Isle of Wight	North & East	Portsmouth	Southampton	Western	Total	Force Target
YTD September 2009	14	8	29	22	38	66	177	
YTD Target	25.07	20.05	40.11	40.11	50.14	25.07	200.55	
September 2009	1	1	7	3	5	2	19	

### Drug seizures information

	Central	Isle of Wight	North & East	Portsmouth	Southampton	Western	Total
YTD August 2009	547	519	273	292	449	155	2235
YTD August 2008	423	360	240	288	180	245	1736
% change from 08/09	29.3%	44.2%	13.8%	1.4%	149.4%	-36.7%	28.7%

Note: This data is produced one month in arrears. No returns in August for Hart, Rushmoor, Test Valley, Eastleigh and New Forest.

### Number of Organised Crime Groups (OCGs) disrupted

YTD September 2009	2008/2009	2009/2010	YTD Target
Number of OCGs identified and mapped	23	20	
Number of OCGs disrupted or partially disrupted through Crime OCU activity	20	12	12.5
Number of OCGs subject to tactical activity	47	73	

Force Target

## Protecting our communities

**Domestic violence and abuse** is defined by ACPO as: 'any incidence of threatening behaviour, violence or abuse (psychological, physical, sexual, financial or emotional) between adults, aged 18 and over, who are or have been intimate partners or family members, regardless of gender or sexuality'

### Domestic violence and abuse crime arrest rate

Force Target

Domestic violence arrest rate is based on records where the occurrence has been flagged as a domestic, and has an arrest event or a linked person reason of arrested.

Target >80%

Year to Date	Central	Isle of Wight	North & East	Portsmouth	Southampton	Western	Total
Domestic crimes	1032	316	795	681	980	772	4576
Domestic crime detection rate	34.59%	42.41%	40.25%	36.27%	33.67%	39.38%	36.98%
Domestic crime arrests	772	233	626	548	774	571	3524
Domestic crime arrest rate	74.81%	73.73%	78.74%	80.47%	78.98%	73.96%	77.01%

Month	Central	Isle of Wight	North & East	Portsmouth	Southampton	Western	Total
Domestic crimes	166	52	125	105	160	125	733
Domestic crime detection rate	34.94%	50.00%	43.20%	33.33%	30.63%	40.00%	37.11%
Domestic crime arrests	107	31	96	83	116	79	512
Domestic crime arrest rate	64.46%	59.62%	76.80%	79.05%	72.50%	63.20%	69.85%

### Police No Further Action (NFA) Rate

Year to Date	Central	Isle of Wight	North & East	Portsmouth	Southampton	Western	Total
Domestic Crimes	Anticipated initially for July, there have been difficulties in obtaining the data which should now be available from the autumn						
Domestic Crime NFA'd							
Domestic Crime NFA Rate							

Month	Central	Isle of Wight	North & East	Portsmouth	Southampton	Western	Total
Domestic Crimes	Anticipated initially for July, there have been difficulties in obtaining the data which should now be available from the autumn						
Domestic Crime NFA'd							
Domestic Crime NFA Rate							

### Repeat incidents of domestic violence cases reviewed at MARAC

SPI 14.1

A Multi Agency Risk Assessment Conference (MARAC) meet to manage the highest risk domestic abuse cases. A 'case' = a victim & perpetrator(s) being reviewed at the same MARAC. Once a case has been to MARAC, it remains flagged as a MARAC case for 12 mths after the most recent MARAC review. A repeat case is when a case reviewed at MARAC has also been reviewed at the same MARAC within the preceding 12 mths. For further information on this measure please refer to Home Office Guidance on Performance Indicators for Policing & Community Safety 09/10.

Year to Date	Central	Isle of Wight	North & East	Portsmouth	Southampton	Western	Total
Number of cases reviewed at MARAC	192	117	245	233	209	179	996
Repeat cases reviewed at MARAC	50	42	90	75	89	44	346
% Repeat cases	26.04%	35.90%	36.73%	32.19%	42.58%	24.58%	34.74%

### Hate crime detection rate

Force Target

Target >45%

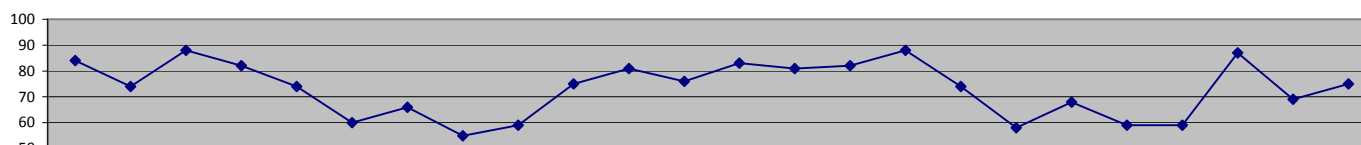
Year to Date	Central	Isle of Wight	North & East	Portsmouth	Southampton	Western	Total
Incidents	159	27	123	221	312	101	943
Crimes	126	23	99	165	226	87	726
Detections	62	13	47	77	114	32	345
Detection Rate	49.21%	56.52%	47.47%	46.67%	50.44%	36.78%	47.52%

Month	Central	Isle of Wight	North & East	Portsmouth	Southampton	Western	Total
Incidents	29	9	23	39	55	13	168
Crimes	28	8	21	31	36	10	134
Detections	14	5	10	12	16	7	64
Detection Rate	50.00%	62.50%	47.62%	38.71%	44.44%	70.00%	47.76%

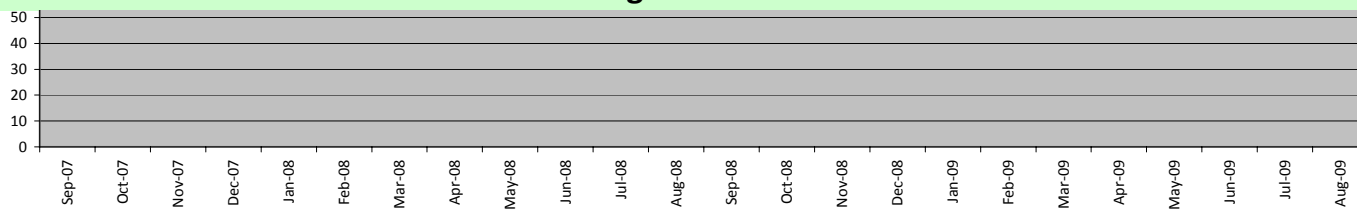
### Road traffic casualties

SPI 9.1 Force Target

Fatal/serious injury casualties - all victims



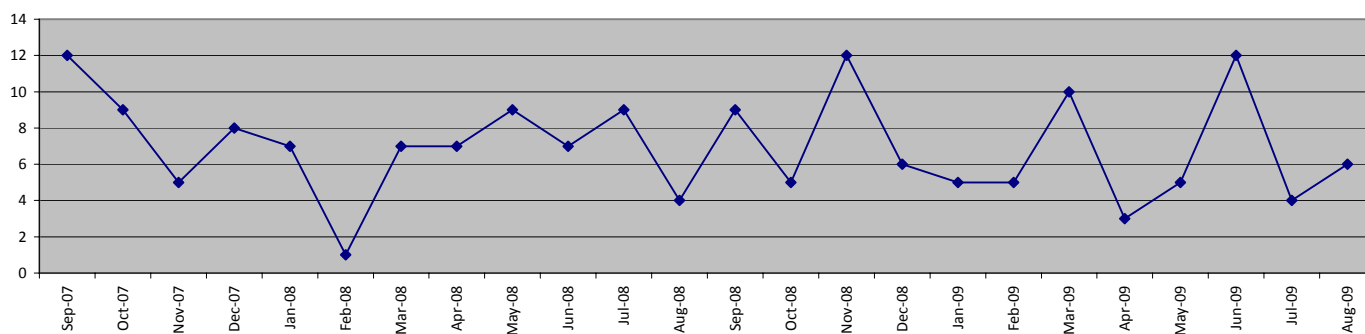
## Protecting our communities



The Force target 2009/2010 is for less than 888 casualties, which equates to less than 372 in 153 days      YTD August 2009 = 351 casualties

	Central	Isle of Wight	North&East	Portsmouth	Southampton	Western	Total
April 2009 - August 2009	97	32	66	27	41	88	<b>351</b>
of these, fatals were	5	1	2	1	0	8	<b>17</b>
April 2008 - August 2008	108	37	93	29	36	109	<b>412</b>

### Fatal/serious injury casualties - victims under 16 years



The DETR target is for a 50% reduction in child casualties by 2010 from 164 to 82

	Central	Isle of Wight	North&East	Portsmouth	Southampton	Western	Total
April 2009 - August 2009	9	2	5	5	3	6	<b>30</b>
of these, fatals were	0	0	0	0	0	0	<b>0</b>
April 2008 - August 2008	7	6	6	4	7	6	<b>36</b>

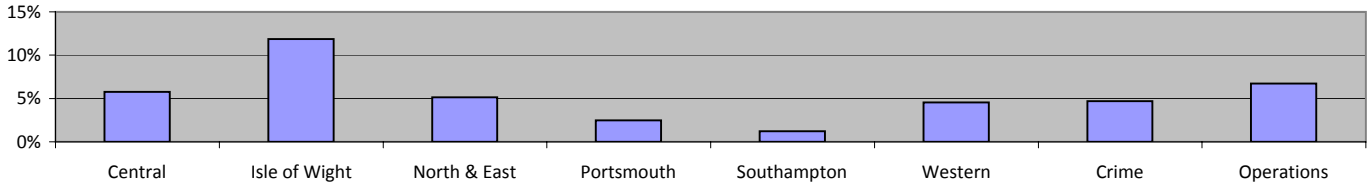
Note: YTD numbers may change as the accident record data are updated each month

Note: The casualties in East Hampshire have all been attributed to North & East OCU in the absence of a breakdown by OCUs

## Overdue PDRs

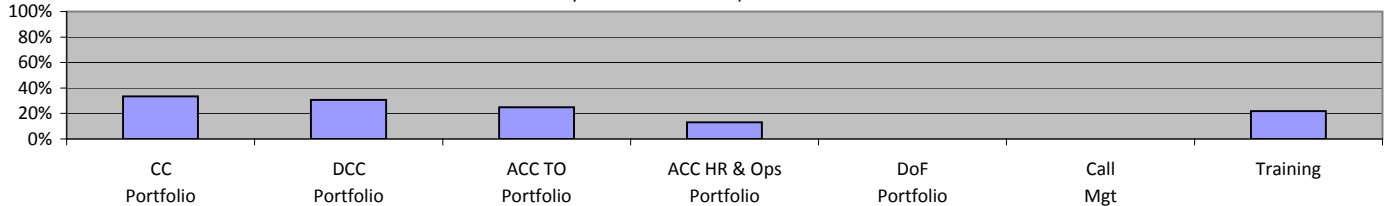
### Police officer PDRs - police officers in OCUs

PDRs overdue by 1 month or more - police officers on OCUs



September 2009	Central	Isle of Wight	North & East	Portsmouth	Southampton	Western	Crime	Operations
Population	607	228	566	407	495	530	406	387
Overdue	35	27	29	10	6	24	19	26
% overdue	5.8%	11.8%	5.1%	2.5%	1.2%	4.5%	4.7%	6.7%

PDRs overdue by 1 month or more - police officers not on OCUs

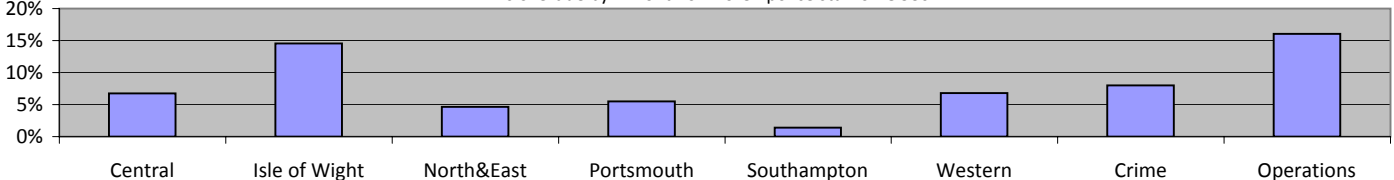


September 2009	CC Portfolio	DCC Portfolio	ACC TO Portfolio	ACC HR & Ops Portfolio	DoF Portfolio	Call Mgt	Training
Population	3	49	4	46	N/A	N/A	55
Overdue	1	15	1	6	N/A	N/A	12
% overdue	33.3%	30.6%	25.0%	13.0%	N/A	N/A	21.8%

ACC HR and Ops Portfolio excludes Training figures which are reported on separately. No police officers work within DoF Portfolio.

### Police staff PDRs - police staff in OCUs

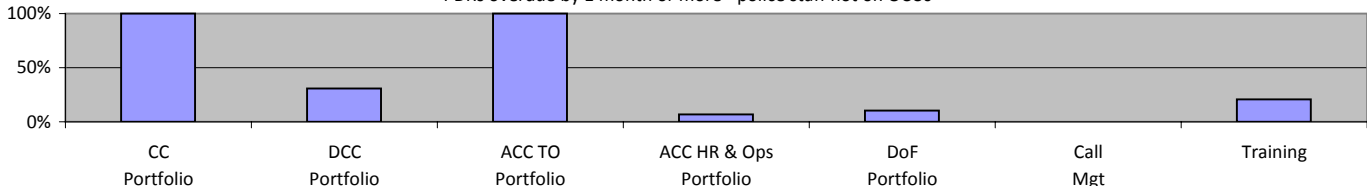
PDRs overdue by 1 month or more - police staff on OCUs



September 2009	Central	Isle of Wight	North&East	Portsmouth	Southampton	Western	Crime	Operations
Population	237	103	214	181	217	206	313	131
Overdue	16	15	10	10	3	14	25	21
% overdue	6.8%	14.6%	4.7%	5.5%	1.4%	6.8%	8.0%	16.0%

### Police staff PDRs - police staff not in OCUs

PDRs overdue by 1 month or more - police staff not on OCUs



September 2009	CC Portfolio	DCC Portfolio	ACC TO Portfolio	ACC HR & Ops Portfolio	DoF Portfolio	Call Mgt	Training
Population	2	300	2	793	145	0	92
Overdue	2	92	2	55	15	0	19

## Making the most of our resources

% overdue	100.0%	30.7%	100.0%	6.9%	10.3%	0.0%	20.7%
-----------	--------	-------	--------	------	-------	------	-------

ACC HR and Ops Portfolio excludes Training figures which are reported on separately

### NCRS compliance

	Central	Isle of Wight	North & East	Portsmouth	Southampton	Western	Crime
<b>Self-Inspection</b>	91.0%	85.0%	80.0%	66.0%	81.0%	90.0%	No data

Note: Self-Inspections - only appealed records are moderated by the Force Crime Registrar

These inspections were undertaken in March 2008

### Budget spend

The actual spend to the end of August 2009 was £119.2m. The projected spend for the force at the end of the financial year is £301.501m, which will be an underspend of £1.596m against the agreed budget.

	Central	Isle of Wight	North & East	Portsmouth	Southampton	Western	Crime	Operations
Projected over/(under)spend 2009/2010	-£24,000	-£18,000	-£700,000	-£64,000	£23,000	-£384,000	-£139,000	-£148,000

### Efficiency savings

The Authority needs to maximise efficiency gains both due to its budgetary constraints and in order to achieve value for money. In addition, there is a national Home Office target to deliver recurring efficiency or productivity gains equivalent to 10.3% of the 2007/08 'Gross Revenue Expenditure' over three years, by the end of 2010/11. Each Authority must set its own challenging target. The Authority and Force are currently working to a target equivalent to the national target, which equates to £33m over the 3 years (an average of £11m per annum). The actual achieved as at 31/03/09 was £9.4m. The current value of efficiency initiatives included in the register is £25.373m

### Specialist support

7 OCU	OCU Supported							Total
	Central	Isle of Wight	North & East	Portsmouth	Southampton	Western	Other	
April 2009	2	1	4	4	4	1	0	16
May 2009	1	1	0	3	3	0	0	8
June 2009	4	0	1	2	1	1	0	9
July 2009	4	1	1	1	1	1	0	9
August 2009	3	1	6	0	1	3	0	14
September 2009	2	2	2	1	2	5	0	14
<b>Total</b>	<b>16</b>	<b>6</b>	<b>14</b>	<b>11</b>	<b>12</b>	<b>11</b>	<b>0</b>	<b>70</b>

NOTE: An 'assist' includes assistance that is outside of normal working practices and can encompass practical resources and/or managerial support. For example, it includes support with house to house/investigative enquiries, administrative support, interviewing/statement taking, advice and IT examinations, to name a few. A single assist can involve anything from one member of staff to several from a period of a few hours, to a whole week. An assist does not include phone calls.

### 8 OCU

8 OCU Commitment to ANPR Operations - April - September 09								
	OCU Supported							Total
	1	2	3	4	5	6	Other	
No. of Ops	66	8	34	33	31	30	34	236
Arrests	35	3	10	21	14	14	3	100
S.165 Vehicle Seizures	130	10	34	109	89	49	48	469
Impaired Drivers	11	0	6	13	15	4	8	57
<b>Total Results</b>	<b>176</b>	<b>13</b>	<b>50</b>	<b>143</b>	<b>118</b>	<b>67</b>	<b>59</b>	<b>626</b>
Cash/POCA Seizures	Seized by or assisted by 8 OCU ANPR teams (£)							19175
Drugs Seizures	Seized by or assisted by 8 OCU ANPR teams (approx £)							1,500,020

N.B. Recent court case showed Cocaine to the value of £1.5 million seized by RPU.

8 OCU NON-ANPR Pre-Planned Operations/Tasks/Requests for Resources - April - September 09								
	OCU Supported							Total
	1	2	3	4	5	6	Other**4	

## Making the most of our resources

No. of Ops	125	67	145	102	236	204	26	905
Arrests	46	35	53	46	118	55	13	366
S.165 Vehicle Seizures	22	2	16	15	56	45		156
<b>Total Results</b>	<b>68</b>	<b>37</b>	<b>69</b>	<b>61</b>	<b>174</b>	<b>100</b>	<b>13</b>	<b>522</b>
Cash/POCA Seizures	Seized by or assisted by 8 OCU teams (not ANPR) (£)							6918
Drugs Seizures	Seized by or assisted by 8 OCU teams (not ANPR) (approx Kgs)							16.3

### 8 OCU Arrests for Death by Driving Offences April - September 09

	Persons Arrested	No. of arrests	All Disposals
4/04 Causing Death by Dangerous Driving	1	1	1
4/06 Causing Death by Careless Driving under Influence of Drink or Drug	1	1	1
4/08 Causing Death by Careless or Inconsiderate Driving	4	4	4
4/09 Causing Death by Driving: Unlicensed, Disqualified or Uninsured Dr	0	0	0
<b>Total</b>	<b>6</b>	<b>6</b>	<b>6</b>

### Interventions in support of OCUs and Force Strategy YTD

	Persons Arrested	Apr-Sep 2009 Incidents attended* <sup>1</sup>			FPNs* <sup>2</sup>		S165 Vehicle Seizures* <sup>3</sup>
		Total	% DSP	% ONS	Disorder	Other	
Air Support Unit	5	Data given as a whole for 8 OCU				1	
Dog Support Unit	143				1	83	
Force Support Unit	316				5	10	
Roads Policing Unit	1224				9	8788	
Specialist Firearms Officers	139				2	60	
Armed Response Vehicles	610				9	463	
Other 8 OCU Officers	6				0	3	
<b>Total</b>	<b>2443</b>	<b>18506</b>	<b>13.30%</b>	<b>8.89%</b>	<b>26</b>	<b>9408</b>	<b>2010</b>

\*<sup>1</sup>Altaris data - Dispatch (DSP) and Arrival (ONS) of 8 OCU units as a percentage of Grade 1 and 2 incidents created (Grade 2 includes 2 and 2N). Due to an issue with the Business Objects report, data for August and September does not include Air Support Unit however they attended 99 incidents in August and 182 in 8 OCU units were OnScene at **66.81%** of those incidents they were dispatched to. 8 OCU units currently equate to approx 8% of frontline operational officers.

\*<sup>2</sup> FPNs are Fixed Penalty Notices issued \*<sup>3</sup> Vehicles seized under Section 165 of the Road Traffic Act are for No Insurance or No Driving Licence.

\*<sup>4</sup> Other is Out of County/Mutual Aid

## Equipping our team to deliver

### Financial awareness training

Financial awareness training will be undertaken for budget holders with the aim of ensuring a minimum of 95% of budget holders are trained by the end of the financial year. The target is for at least 95% of all Chief Inspector to Chief Superintendents to be trained by the end of the financial year

Full Year Apr 09 - Mar 10	
Courses Planned	Places Available
10	160

Year to Date (Sep 09)	
Courses Held	Numbers Trained
4	23
4	48

Chief Inspector to Chief Superintendent (towards target)

Total number trained

### Preparing for frontline supervision

A leadership project is underway and a formal Force leadership target will be established with supporting material to be published here in the coming months. The tables below provide data on 2009/2010 leadership training courses

	Full Year Apr 09 - Mar 10		Year to Date (Sep 09)	
	Courses Planned	Places Available	Courses Held	Numbers Trained
Sergeants Operational Activities	6	108	3	30
Inspectors Statutory Responsibilities	5	70	2	24
First Line Manager - Leadership Part 1	6	96	2	32
First Line Manager - Leadership Part 2	6	96	5	69
First Line Manager - Action Learning Sets	18	108	15	135

### Mobile data

A mobile data project is underway - no information will be available before October 2009

### Minority ethnic officer recruitment

SPI 3.1

	All recruits	Minority ethnic recruits	%
YTD September 2009	83	2	2.4%

### Female officer representation

SPI 3.2

	Male strength	Female strength	%
YTD September 2009	2685.1	1025.1	27.6%