

Performance Profile

July 2011



Summary and index

Summary

2011/12 Reporting Year

This document contains a strategic overview of the Constabulary's performance. It has a variety of performance measures within it. The format of the profile has been aligned to the Policing Priorities identified by the Control Strategy. It provides information on our performance against Force targets. It also aims to provide supplementary information to assist in understanding reasons behind the performance in these areas. It has been designed as a headline document that will enable our customers, both internally and externally, to easily assess performance information for key domains. This year, as last, additional monitoring information within the six domains of the Policing Priorities will be published quarterly - a calendar of publication is located at the bottom of this page. If during a month an issue is identified which needs to be highlighted, this will be done through 'exception reporting'.

A matrix can be found at the front of the profile which reflects our year to date performance against our targets.

The Force is in the process of changing from geographic Operational Command Units (OCUs) to geographic Areas. Accordingly, data is shown for Areas where possible, remaining as OCU if not.

Where applicable, within the document, MSG (Most Similar Group) data is published along with the crime and detection data. MSGs are calculated by the Home Office based on a number of socio-demographic & geographic variables which are strongly linked to crime/incident levels and the fear of crime. These groups provide a benchmark for comparison of crime and detection rates. Below the applicable crime tables there are three rows relating to MSG data. The first provides the MSG position for the Force for that crime type. The second displays Actual, this is the number of offences per 1,000 population. The third row shows the MSG Average which is the total number of offences per 1,000 population divided by the number within the MSG. The same three rows are provided in relation to detection data, where data is provided in % figures rather than per 1,000 population. Due to geographic changes mentioned above, this data is currently only available at Force level.

Please note: iQuanta data is provisional. Within the profile, Hampshire data is published and compared against the MSG average. The other forces within Hampshire's MSG are: Avon and Somerset, Bedfordshire, Essex Hertfordshire, Kent, Sussex and Thames Valley. We are unable to provide figures from iQuanta for these forces, due to the provisional nature of this data.

This document is then taken forward by key stakeholders within the organisation to the Force Performance Review Group, where it is used to highlight areas of good performance and those for development.

This is an evolving document and as such, the contents of which may alter over time and any feedback would be welcomed by the Performance Review Team.

Calendar of Quarterly Reporting

April - Catching criminals & managing offenders and Protecting our communities
May - Making the most of our resources and Equipping our team to deliver
June - Providing an excellent service and An active presence in every neighbourhood
July - Catching criminals & managing offenders and Protecting our communities
August - Making the most of our resources and Equipping our team to deliver
September - Providing an excellent service and An active presence in every neighbourhood
October - Catching criminals & managing offenders and Protecting our communities
November - Making the most of our resources and Equipping our team to deliver
December - Providing an excellent service and An active presence in every neighbourhood
January - Catching criminals & managing offenders and Protecting our communities
February - Making the most of our resources and Equipping our team to deliver
March - The year end profile will have all six domain areas included

MSG Colour Key

Force
1-2
3-4
5-6
7-8

Index

Page			
Year to date performance matrix			
2	Summary	including notes on matrix terminology	
3	Index		
4	Year to date targets matrix		
Providing an excellent service			
5	User satisfaction	Target	Consultation & Research Team
5	Being kept informed		Consultation & Research Team
5	Comparative satisfaction of minority ethnic groups		Consultation & Research Team
5	MSG user satisfaction data		Consultation & Research Team
An active presence in every neighbourhood			
6	Reduction in criminal damage	Target	Business Objects
Catching criminals and managing offenders and Protecting our communities			
7	Serious acquisitive crime (SAC) detection rate and reduction in SAC	Target	Business Objects
8	Breakdown: Robbery, dwelling burglary, vehicle crime		Business Objects
8	Breakdown: Theft of a motor vehicle, theft from a motor vehicle		Business Objects
9	Violence against the person with injury	Target	Business Objects
10	Serious violent crime	Target	Business Objects
10	Homicide		Business Objects
11	Assault with less serious injury		Business Objects
12	Serious sexual offences		Business Objects
12	Rape		Business Objects
Catching criminals and managing offenders monitoring areas			
13	Detections by disposal		Business Objects
13	Community resolution		Business Objects
13	Bail rates		Criminal Justice
13	Arrest and disposal data		Criminal Justice
13	Outstanding suspects		Business Objects
14	OBTJ data		Criminal Justice
14	Forensic results		Scientific Services
Protecting our communities monitoring areas			
15	Non-dwelling burglary		Business Objects
16	Domestic crime/incidents		Business Objects
16	Hate crime		Business Objects
16	Drugs data		Business Objects
16	Gun and knife crime		Business Objects
17	Casualty reductions		Joint Operations Unit
18	Cash seizure		Crime OCU
18	Missing persons		Business Objects
18	Organised crime groups		Crime OCU
19	All crime		Business Objects
Making the most of our resources			
20	BME workforce population	Target	HR
21	Specials scorecard (the target aspect is effective use of specials on page 20)	Target	Extended policy family team
22	Cost reductions and savings	Target	Finance
22	Protecting the frontline	Target	HR

Year to date performance targets matrix

	Target	Actual	Western	Eastern	Northern
Providing an excellent service					
Overall user satisfaction	70%	66%	64%	67%	67%
An active presence in every neighbourhood					
Reduce criminal damage	<7916	8073	2764	3025	2284
	Area specific targets		2777	3046	2093
Catching criminals & managing offenders & Protecting our communities					
Serious acquisitive crime SD	>15%	13.18%	12.88%	9.95%	18.12%
Reduction in serious acquisitive crime	<5582	6131	2314	2222	1595
	Area specific targets		2151	2020	1411
Reduce violence against the person with injury	<4636	4922	1699	2020	1203
	Area specific targets		1589	1995	1053
Most serious violence SD	>50%	54.48%	55.32%	45.76%	68.66%
Making the most of our resources					
BME workforce population	>2%	2.14%	This is a Force measure		
Effective use of volunteers/specials	<550	272	This is a Force measure		
Cost reductions and savings	Maintain top quartile position	7 of 41	This is a Force measure		
Protect the frontline	<2224	2238	This is a Force measure		
Force Total - targets achieved	4		2	1	2

Notes to be read in conjunction with matrix

Overall user satisfaction data	Based on year to date rather than rolling months
SD	Sanction detections
Serious acquisitive crime SD	In June this year, Hampshire Police Authority agreed this target should be changed to "solved crime rate", currently only sanction detection data is available. This will be amended when the data is available
BME	Black and minority ethnic
Area specific targets	Area specific targets are rounded to 0 decimal places; the actual figure may therefore seem the same but appear amber due to this rounding
Effective use of volunteers/specials	Based on the number of officers delivering 16 hours of duty time per month
Protect the frontline	This figure is the average number of officers conducting frontline duties

Force target areas for providing an excellent service

	Target	Actual	Western	Eastern	Northern
Overall user satisfaction year to date	70.0%	66%	64%	67%	67%

User Satisfaction Survey results

Year to Date by Area (April 2011 - July 2011)

Includes victims of burglary, vehicle crime and violent crime who said they were completely or very satisfied

Target > 70%	Western	Eastern	Northern	Force	No. Surveys
Overall Satisfaction	64%	67%	67%	66%	1650
Being Kept Informed	52%	54%	52%	53%	1640

Rolling 3 months by Area (April 2011 - June 2011)

Includes victims of burglary, vehicle crime and violent crime who said they were completely or very satisfied

Target > 70%	Western	Eastern	Northern	Force	No. Surveys
Overall Satisfaction	62%	66%	66%	65%	1237
Being Kept Informed	50%	52%	52%	51%	1232

Rolling 12 months data by OCU (Aug 2010 - Jul 2011)

Includes victims of burglary, vehicle crime, violent crime (& RTCs up to March only) who said they were completely or very satisfied

Target > 70%	Central	Isle of Wight	North & East	Portsmouth	Southampton	Western	Force	No. Surveys
Overall Satisfaction	67%	70%	67%	66%	63%	72%	68%	6841
Being Kept Informed	55%	56%	54%	55%	51%	59%	55%	6746

Comparative satisfaction of minority ethnic groups

Rolling 12 months data (Aug 2010 - Jul 2011)

Includes victims of burglary, vehicle crime, violent crime and racist incidents (and RTCs up to March only) who said they were completely or very satisfied with the 'Whole experience'

	Completely and very satisfied	Completely, very and fairly satisfied	No. Surveys
White	68.7%	83.7%	6456
Minority Ethnic	54.4%	75.5%	555
Satisfaction Gap	14.3%	8.2%	

NOTE: Although this measure is not a target, due to its importance, we will be reporting the figures on a monthly basis

MSG information for user satisfaction

Latest iQuanta data for MSG for the 12 months ending March 2011 (iQuanta calculate satisfaction % based on those responding that they are completely, very or fairly satisfied)

	Previous MSG position	Current MSG position	Change		Previous MSG position	Current MSG position	Change
Vehicle crime				Burglary			
Ease of contact	2/8	6/8	↓	Ease of contact	3/8	3/8	↔
Actions taken	4/8	5/8	↓	Actions taken	3/8	3/8	↔
Follow up	5/8	5/8	↔	Follow up	1/8	1/8	↔
Treatment	4/8	6/8	↓	Treatment	6/8	3/8	↑
Whole Experience	5/8	5/8	↔	Whole Experience	3/8	3/8	↔

Violent crime

Ease of contact	4/8	6/8	↓
Actions taken	4/8	4/8	↔
Follow up	7/8	6/8	↑
Treatment	6/8	6/8	↔
Whole Experience	6/8	6/8	↔

RTC (minor injury)

Ease of contact	1/8	1/8	↔
Actions taken	2/8	1/8	↑
Follow up	1/8	2/8	↓
Treatment	1/8	4/8	↓
Whole Experience	3/8	3/8	↔

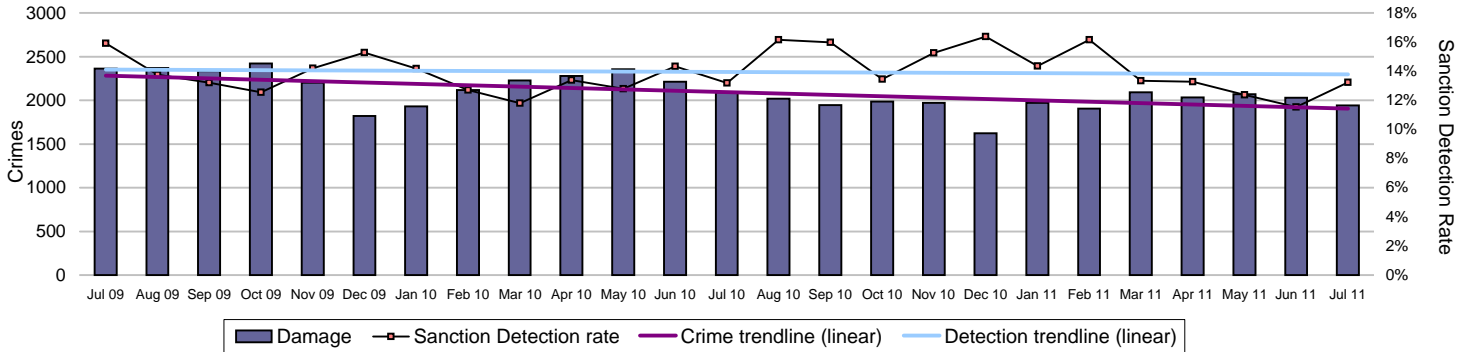
All users (excluding racist incidents)

Ease of contact	2/8	3/8	↓
Actions taken	3/8	3/8	↔
Follow up	3/8	5/8	↓
Treatment	5/8	5/8	↔
Whole Experience	4/8	4/8	↔

Force target areas for an active presence in every neighbourhood

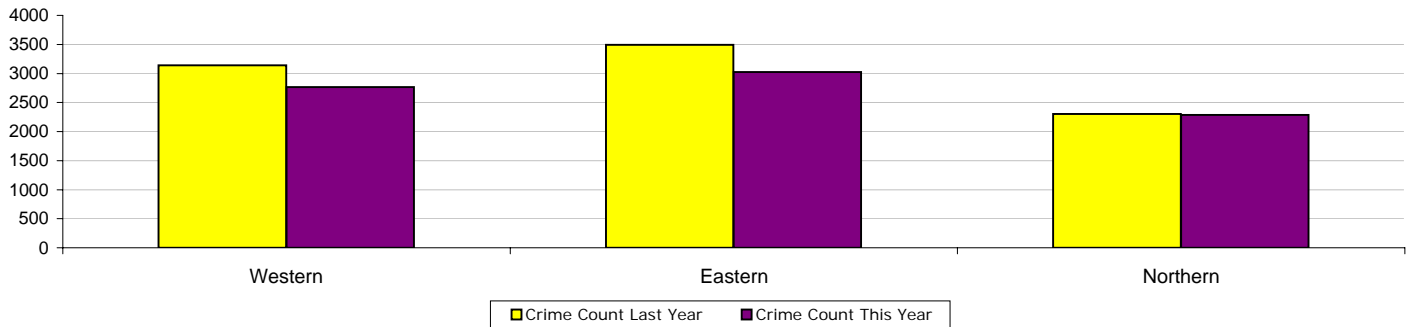
	Target	Actual	Western	Eastern	Northern
Reduce criminal damage	7916	8073	2764	3025	2284
	Area specific targets		2777	3046	2093

Criminal damage



Crimes	Western	Eastern	Northern	Force
YTD Crimes	2764	3025	2284	8073
YTD Target	2777	3046	2093	7916
YTD 10/11 Crimes	3142	3492	2305	8939
This month	639	726	517	1882
% change from 10/11	-12.03%	-13.37%	-0.91%	-9.69%

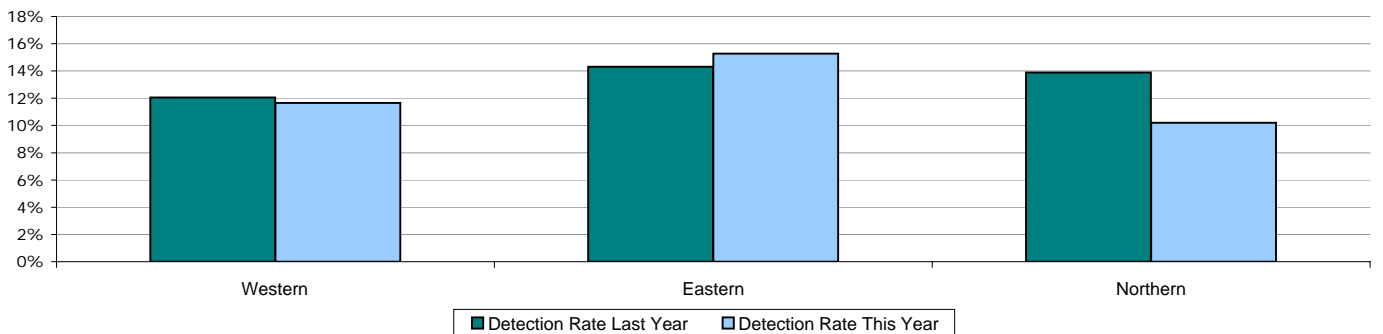
	Force
MSG position	8 of 8
MSG actual	3.292
MSG average	2.981



Detections	Western	Eastern	Northern	Force
YTD Detection Rate	11.65%	15.27%	10.20%	12.60%
This month	12.68%	16.12%	10.06%	13.28%
YTD 10/11 Detections	12.06%	14.32%	13.88%	13.41%

	Force
MSG position	5 of 8
MSG actual	14.14%
MSG average	14.20%

Note: Detections refer to Sanction Detections ONLY



Force target areas for catching criminals and managing offenders

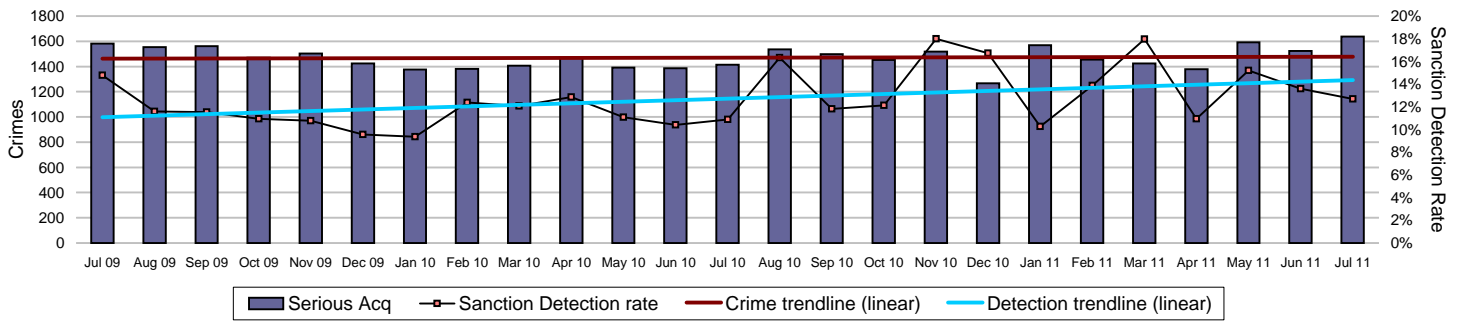
Force target areas for protecting our communities

	Target	Actual	Western	Eastern	Northern
Reduce serious acquisitive crime	5582	6131	2314	2222	1595
	Area specific targets		2151	2020	1411
Serious acquisitive detection rate	15%	13.2%	12.9%	9.9%	18.1%

Note: In June this year, Hampshire Police Authority agreed this target should be changed to "solved crime rate", currently only sanction detection data is available. This will be amended when the data is available

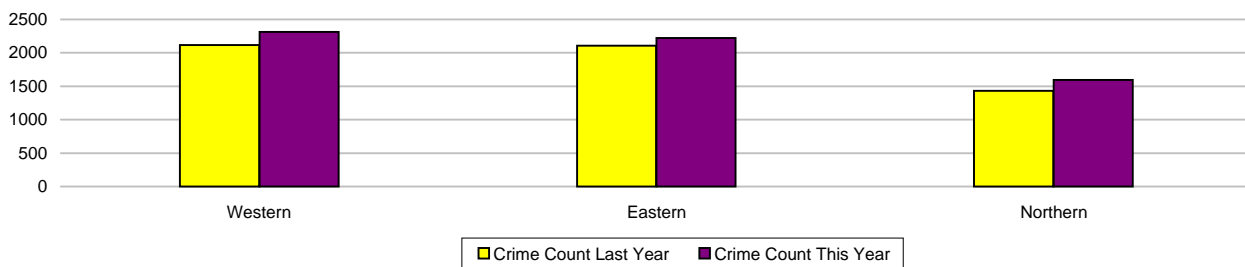
Serious acquisitive crime

Serious acquisitive crime consists of crimsec codes 28, 29, 34A, 34B, 37/2, 45 and 48



Crimes	Western	Eastern	Northern	Force
YTD Crimes	2314	2222	1595	6131
Target	2151	2020	1411	5582
YTD 10/11 Crimes	2118	2106	1433	5657
This month	617	605	415	1637
% change from 10/11	9.25%	5.51%	11.30%	8.38%

	Force
MSG position	3 of 8
MSG actual	2.42
MSG average	2.62

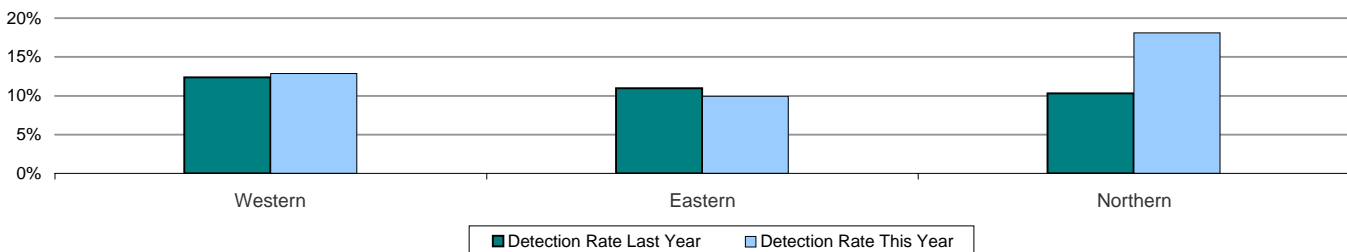


Detections

Target >15%	Western	Eastern	Northern	Force
YTD Detection Rate	12.88%	9.95%	18.12%	13.18%
This month	12.97%	10.25%	15.90%	12.71%
YTD 10/11 Detections	12.37%	10.97%	10.33%	11.33%

	Force
MSG position	4 of 8
MSG actual	13.92%
MSG average	16.00%

Note: Detections refer to Sanction Detections ONLY



Force target areas for catching criminals and managing offenders

Force target areas for protecting our communities

Serious acquisitive crime breakdown

Robbery

Year to date	Western	Eastern	Northern	Force
Crimes	193	119	68	380
Last year's crimes	164	125	80	369
% change from last year	17.68%	-4.80%	-15.00%	2.98%
MSG position				4 of 8

Sanction detection rate	20.73%	15.13%	35.29%	21.58%
MSG position				7 of 8

July 2011	Western	Eastern	Northern	Force
Crimes	52	35	20	107
Sanction detection rate	19.23%	8.57%	30.00%	17.76%

Dwelling burglary

Year to date	Western	Eastern	Northern	Force
Crimes	648	724	491	1863
Last year's crimes	591	669	370	1630
% change from last year	9.64%	8.22%	32.70%	14.29%
MSG position				3 of 8

Sanction detection rate	20.83%	15.33%	19.76%	18.41%
MSG position				6 of 8

July 2011	Western	Eastern	Northern	Force
Crimes	162	210	133	505
Sanction detection rate	16.67%	17.14%	22.56%	18.42%

Vehicle crime

Year to date	Western	Eastern	Northern	Force
Crimes	1473	1379	1036	3888
Last year's crimes	1363	1312	983	3658
% change from last year	8.07%	5.11%	5.39%	6.29%
MSG position				3 of 8

Sanction detection rate	8.35%	6.67%	16.22%	9.85%
MSG position				4 of 8

July 2011	Western	Eastern	Northern	Force
Crimes	403	360	262	1025
Sanction detection rate	10.67%	6.39%	11.45%	9.37%
Sanction detection numbers	43	23	30	96

Theft of a motor vehicle

Year to date	Western	Eastern	Northern	Force
Crimes	359	298	245	902
MSG position				4 of 8
Sanction detection rate	11.42%	16.44%	20.00%	15.41%
MSG position				3 of 8

July 2011	Western	Eastern	Northern	Force
Crimes	91	69	62	222
Sanction detection rate	15.38%	23.19%	32.26%	22.52%
Sanction detection numbers	14	16	20	50

Theft from a motor vehicle

Year to date	Western	Eastern	Northern	Force
Crimes	1114	1081	791	2986
MSG position				3 of 8
Sanction detection rate	7.36%	3.98%	15.04%	8.17%
MSG position				4 of 8

July 2011	Western	Eastern	Northern	Force
Crimes	312	291	200	803
Sanction detection rate	9.29%	2.41%	5.00%	5.73%
Sanction detection numbers	29	7	10	46

Robbery, dwelling burglary and vehicle crime are the component parts of serious acquisitive crime. These individual crime types do not have targets.

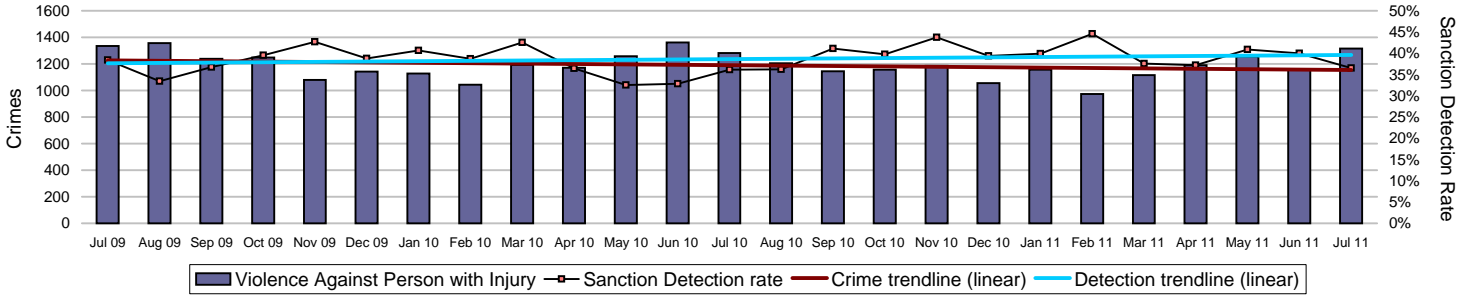
Force target areas for catching criminals and managing offenders

Force target areas for protecting our communities

	Target	Actual	Western	Eastern	Northern
Reduction of VAP with injury	4636	4922	1699	2020	1203
	Area specific targets		1589	1995	1053
Serious violent detection rate	50.0%	54.5%	55.3%	45.8%	68.7%

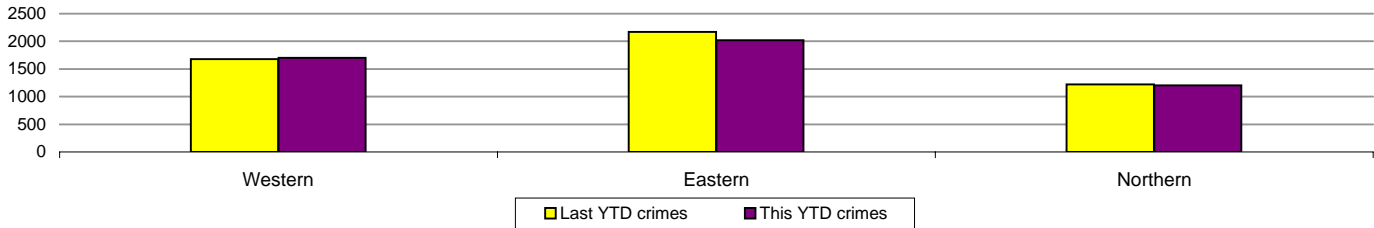
Violence against the person (VAP) with injury

VAP with injury crimsec codes 1, 2, 4.1-4.4, 4.6-4.10, 5A, 5B, 5C, 8F, 8G, 8H, 8J, 8K and 37.1



Crimes	Western	Eastern	Northern	Force
YTD Crimes	1699	2020	1203	4922
YTD Target	1589	1995	1053	4636
YTD 10/11 Crimes	1680	2173	1221	5074
This month	431	562	323	1316
% change from 10/11	1.13%	-7.04%	-1.47%	-3.00%

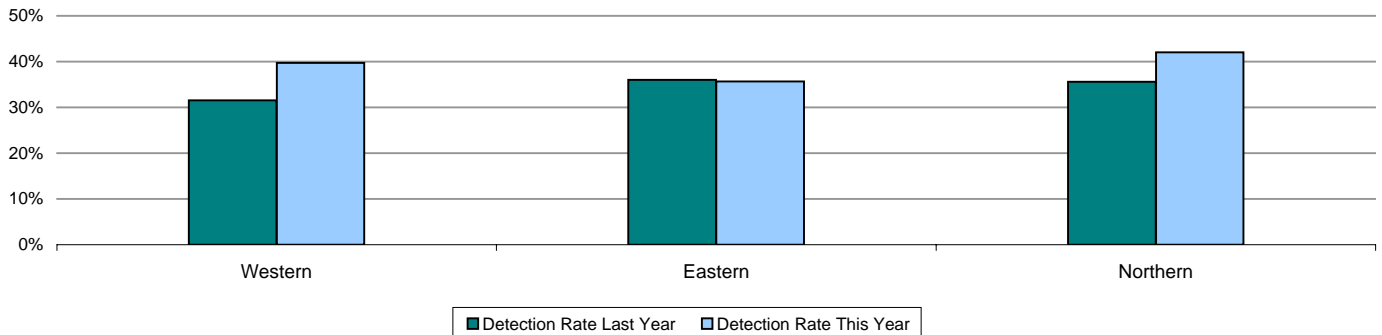
	Force
MSG position	7 of 8
MSG actual	1.93
MSG average	1.44



Detections	Western	Eastern	Northern	Force
YTD Detection rate	39.73%	35.64%	42.06%	38.62%
This month	38.28%	32.56%	41.18%	36.55%
YTD 10/11 Detections	31.55%	35.99%	35.63%	34.43%

	Force
MSG position	7 of 8
MSG actual	39.36%
MSG average	42.23%

Note: Detections refer to Sanction Detections ONLY

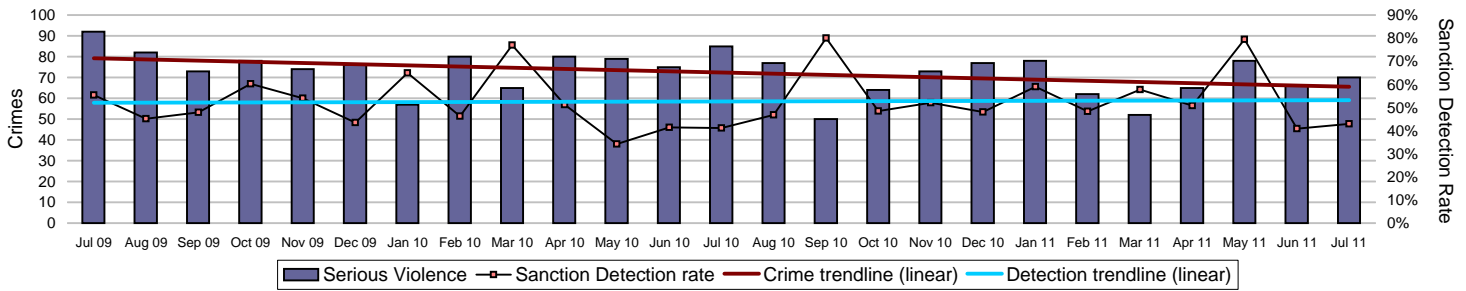


Force target areas for catching criminals and managing offenders

Force target areas for protecting our communities

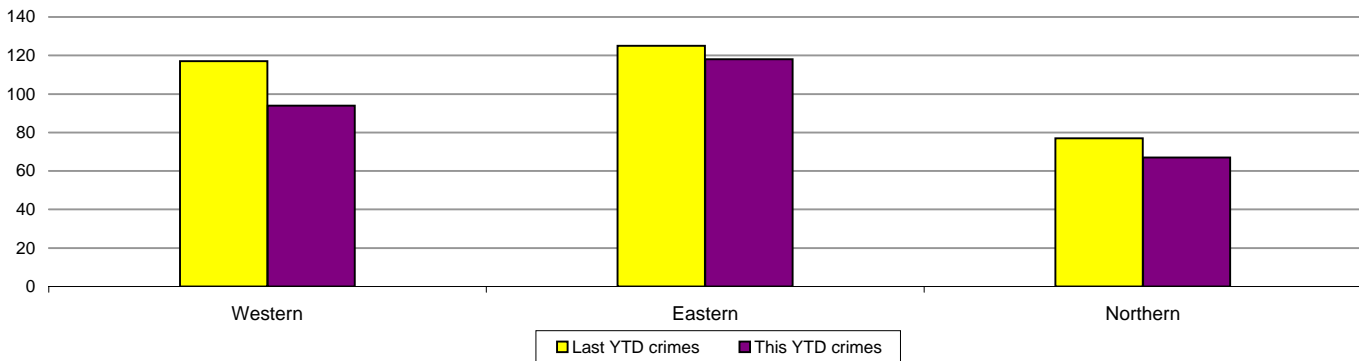
Serious violent crime

Serious violent crime consists of crimsec codes 1, 2, 4.1-4.4, 4.6, 4.8, 5A, 5B, 5C, 8F, 8H and 37.1



Crimes	Western	Eastern	Northern	Force
YTD Crimes	94	118	67	279
YTD 10/11 Crimes	117	125	77	319
This month	24	27	19	70
% change from 10/11	-19.66%	-5.60%	-12.99%	-12.54%

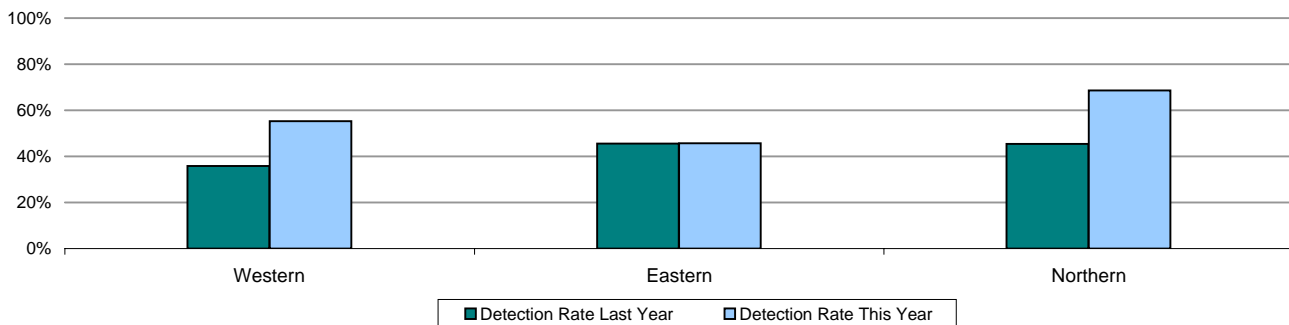
	Force
MSG position	6 of 8
MSG actual	0.114
MSG average	0.101



Detections	Western	Eastern	Northern	Force
YTD Detection Rate	55.32%	45.76%	68.66%	54.48%
This month	45.83%	33.33%	52.63%	42.86%
YTD 10/11 Detections	35.90%	45.60%	45.45%	42.01%

	Force
MSG position	3 of 8
MSG actual	52.76%
MSG average	52.46%

Note: Detections refer to Sanction Detections ONLY



Homicide

	Western	Eastern	Northern	Force
YTD July 2011 - total	2	0	1	3
YTD Domestic Homicides 2011/2012	1	0	0	1
YTD July 2010 - total	5	0	1	6
YTD Domestic Homicides 2010/2011	4	0	1	5

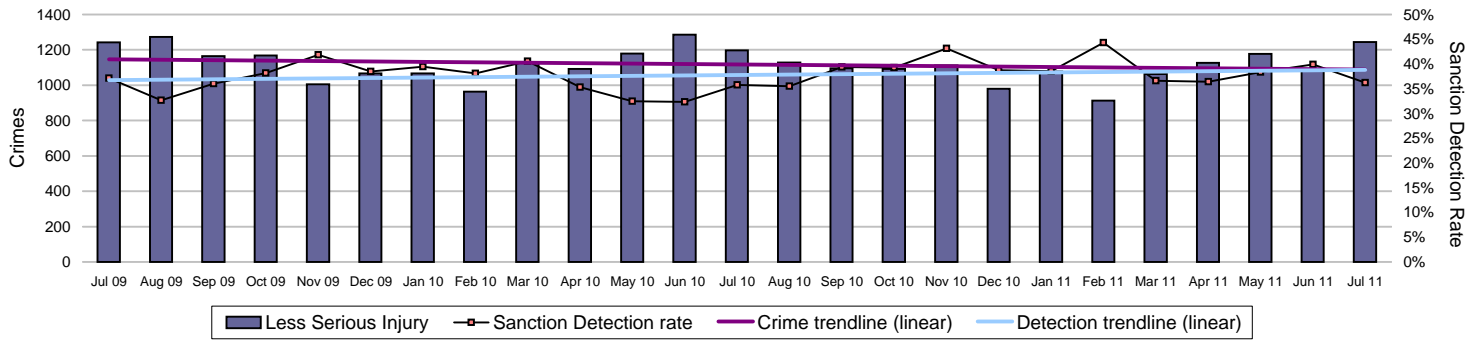
Note: A domestic homicide is where the relationship between victim and suspect was either: spouse, common-law spouse or cohabiting partner, boyfriend/girlfriend, ex-boyfriend/girlfriend or adulterous relationship

Force target areas for catching criminals and managing offenders

Force target areas for protecting our communities

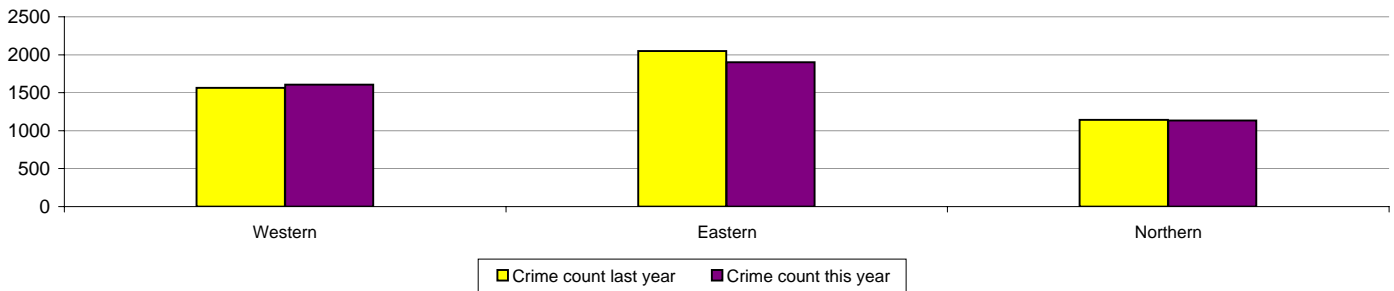
Assault with less serious injury

Assault with less serious injury consists of crimsec codes 8G and 8J



Crimes	Western	Eastern	Northern	Force
YTD Crimes	1605	1901	1136	4642
YTD 10/11 Crimes	1563	2047	1144	4754
This month	407	534	304	1245
% change from 10/11	2.69%	-7.13%	-0.70%	-2.36%

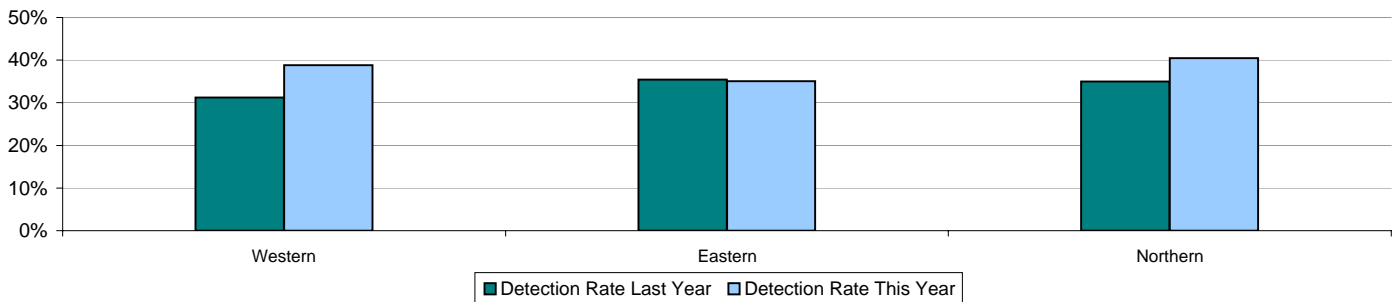
	Force
MSG position	8 of 8
MSG actual	1.815
MSG average	1.343



Detections	Western	Eastern	Northern	Force
YTD Detection Rate	38.82%	35.03%	40.49%	37.68%
This month	37.84%	32.58%	40.46%	36.22%
YTD 10/11 Detections	31.22%	35.42%	34.97%	33.93%

	Force
MSG position	7 of 8
MSG actual	38.50%
MSG average	41.50%

Note: Detections refer to Sanction Detections ONLY

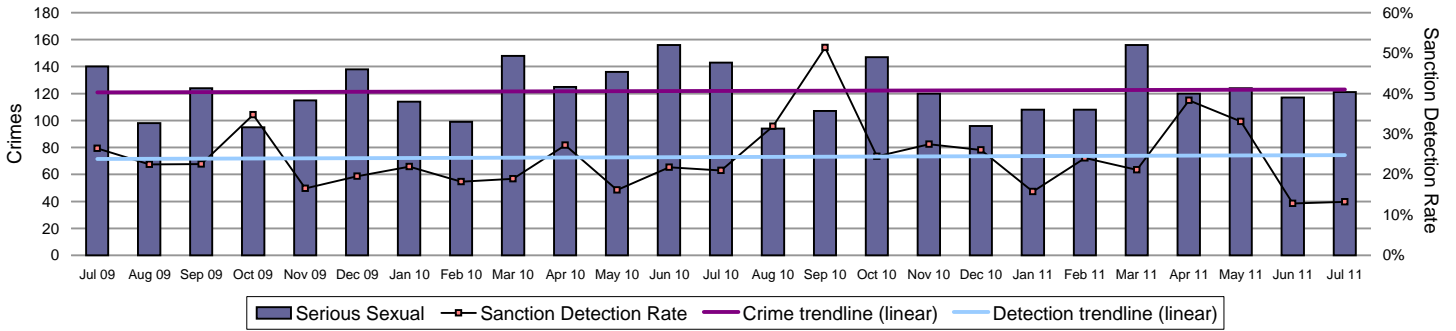


Force target areas for catching criminals and managing offenders

Force target areas for protecting our communities

Serious sexual offences

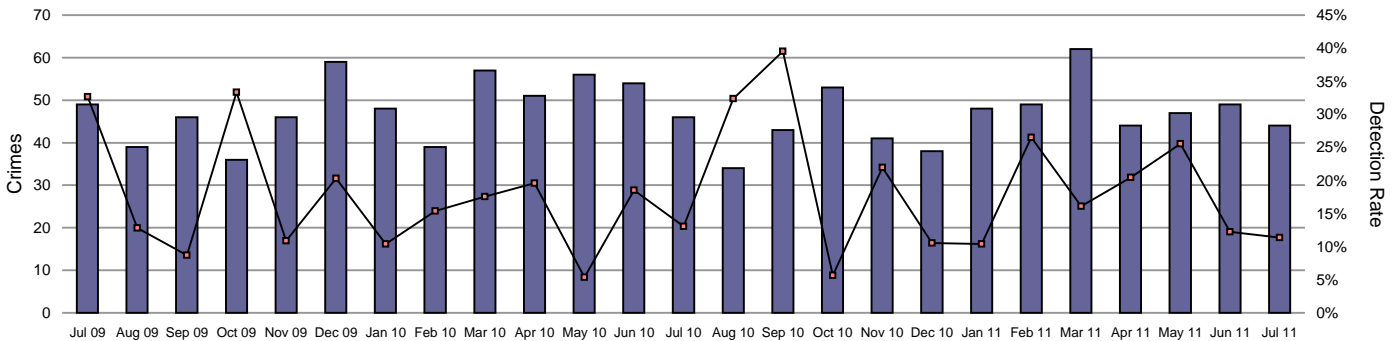
Serious sexual offences consist of crimsec codes 19A-H, 21, 17A, 17B, 20A, 20B, 22A, 70, 71 and 72



	Western	Eastern	Northern	Force
YTD Crimes	169	197	116	482
YTD 10/11 Crimes	198	227	135	560
This month	39	52	30	121
% change from 10/11	-14.65%	-13.22%	-14.07%	-13.93%

	Western	Eastern	Northern	Force
YTD Detection Rate	24.26%	24.37%	25.00%	24.48%
This month	7.69%	13.46%	20.00%	13.22%
YTD 10/11 Detections	26.26%	16.74%	22.22%	21.43%

Rape



	Western	Eastern	Northern	Force
YTD Crimes	65	79	40	184
YTD 10/11 Crimes	75	73	59	207
This month	13	20	11	44
% change from 10/11	-13.33%	8.22%	-32.20%	-11.11%

	Western	Eastern	Northern	Force
YTD Detection Rate	12.31%	16.46%	27.50%	17.39%
This month	15.38%	5.00%	18.18%	11.36%
YTD 10/11 Detections	22.67%	9.59%	8.47%	14.01%

Note: MSG data is always published a month in arrears.
For an explanation of this data, refer to the Summary on page 2

Monitoring information for catching criminals and managing offenders

Detections by disposal type - Volume

Year to date July 2011	Central	Isle of Wight	North & East	Portsmouth	Southampton	Western	Force
Charge	1532	557	1601	1521	1662	1279	8152
Caution	299	127	277	221	228	273	1425
Conditional Caution	12	3	11	11	6	11	54
Reprimand/warning	111	22	129	50	38	105	455
TIC	76	7	70	62	55	71	341
PND	168	40	179	123	123	137	770
Cannabis warning	167	113	186	72	116	113	767
	2365	869	2453	2060	2228	1989	11964
Community resolution	347	105	234	221	218	233	1358

Detections by disposal type - Proportion

Year to date July 2011	Central	Isle of Wight	North & East	Portsmouth	Southampton	Western	Force
Charge	64.8%	64.1%	65.3%	73.8%	74.6%	64.3%	68.1%
Caution	12.6%	14.6%	11.3%	10.7%	10.2%	13.7%	11.9%
Conditional Caution	0.5%	0.3%	0.4%	0.5%	0.3%	0.6%	0.5%
Reprimand/warning	4.7%	2.5%	5.3%	2.4%	1.7%	5.3%	3.8%
TIC	3.2%	0.8%	2.9%	3.0%	2.5%	3.6%	2.9%
PND	7.1%	4.6%	7.3%	6.0%	5.5%	6.9%	6.4%
Cannabis warning	7.1%	13.0%	7.6%	3.5%	5.2%	5.7%	6.4%

Percentage bailed on first submission

Percentage of entrants into custody bailed as first disposal

July 2011	Central	Isle of Wight	North & East	Force
No of arrests	956	1424	1531	3911
All Disposals	233	327	346	906
Bailed on first submission	24.40%	23.00%	22.60%	23.20%

Arrest and disposal information

July 2011	Western	Eastern	Northern	Force
Community resolution	147	163	132	442
Charged	679	779	515	1973
Cautioned	144	205	136	485
PND	45	68	67	180
TIC	25	26	44	95
Warning	54	110	55	219
No further action	432	607	382	1421

Outstanding suspects - suspects that are shown on RMS for offences up to and including 02 July 2011

	Western	Eastern	Northern	Force
Crime count	352	369	246	967
Total suspects	377	417	266	1060

Note: Previously, outstanding suspects related to those on crimes over 90 days old; data now relates to crimes over 30 days old

Monitoring information for catching criminals and managing offenders

Offenders brought to justice

Serious Violent offences OBTJ

Data to April 2011

	Recorded Crime		Total OBTJs		Hampshire		Rolling Average	
	Month	RA	Month	RA	Month	RA	MSG	E&W
Attempted murder	0	9	0	2	0.0%	22.2%	39.3%	20.5%
Death by aggravated vehicle taking	0	0	0	0	0.0%	0.0%	100.0%	78.6%
Cause death by dangerous driving etc	0	7	0	9	0.0%	128.6%	110.3%	105.5%
Homicide and child destruction	1	9	0	10	0.0%	111.1%	90.4%	88.5%
Wounding and GBH without intent	54	823	24	227	44.4%	27.6%	28.7%	23.9%

	Convictions	Cautions	TICs	Cannabis Warnings	PNDs
Rolling 12 month Average					
Attempted murder	2	0	0	0	0
Death by aggravated vehicle taking	0	0	0	0	0
Cause death by dangerous driving etc	9	0	0	0	0
Homicide and child destruction	10	0	0	0	0
Wounding and GBH without intent	222	5	0	0	0

RA = Rolling Annual
PND = Penalty Notice for Disorder
E&W = England & Wales

Serious Acquisitive offences OBTJ

Data to April 2011

	Recorded Crime		Total OBTJs		Hampshire		Rolling Average	
	Month	RA	Month	RA	Month	RA	MSG	E&W
Aggravated burglary in a dwelling	2	34	1	20	50.0%	58.8%	37.4%	29.0%
Aggravated vehicle taking	17	171	1	40	5.9%	23.4%	25.8%	27.9%
Burglary in a dwelling	420	5148	46	730	11.0%	14.2%	16.0%	15.4%
Robbery	81	1062	18	225	22.2%	21.2%	23.8%	17.6%
Theft from a vehicle	669	8862	40	674	6.0%	7.6%	8.9%	8.7%
Theft of a motor vehicle	188	2112	6	137	3.2%	6.5%	6.4%	5.6%

	Convictions	Cautions	TICs	Cannabis Warnings	PNDs
Rolling 12 month Average					
Aggravated burglary in a dwelling	20	0	0	0	0
Aggravated vehicle taking	38	2	0	0	0
Burglary in a dwelling	471	34	225	0	0
Robbery	222	3	0	0	0
Theft from a vehicle	247	48	379	0	0
Theft of a motor vehicle	54	7	76	0	0

RA = Rolling Annual
PND = Penalty Notice for Disorder
E&W = England & Wales

Serious sexual crime OBTJ rate

The table below shows % of persons brought to justice for serious sexual crimes against the total number of serious sexual crimes

OBTJ Crime category	Oct-10	Nov-10	Dec-10	Jan-11	Feb-11	Mar-11	Rolling average
Tier 1: Serious Sexual Offences	19%	19%	32%	38%	37%	58%	35%

Forensic results for Vehicle Crime

DNA Detections	Force
1st April 2011 - 30 June 2011	121
1st April 2010 - 30 June 2010	90
Difference	31

Fingerprint Detections	Force
1st April 2011 - 30 June 2011	210
1st April 2010 - 30 June 2010	167
Difference	43

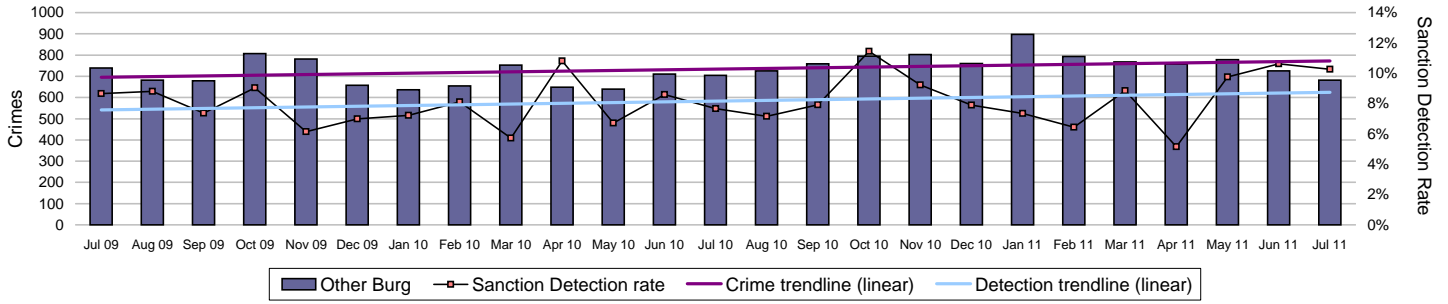
Footwear Detections	Force
1st April 2011 - 30 June 2011	27
1st April 2010 - 30 June 2010	
Difference	

Note - this data takes in Q1. July data is not collated until later in August

Footwear detection figures have only been collated from April 2011 onwards

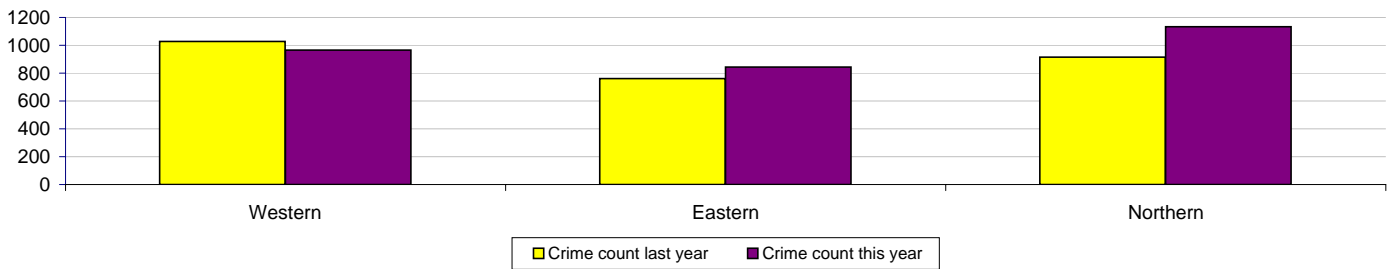
Monitoring information for protecting our communities

Non-Dwelling Burglary



Crimes	Western	Eastern	Northern	Force
YTD Crimes	966	843	1134	2943
YTD 10/11 Crimes	1028	761	914	2703
This month	192	208	282	682
% change from 10/11	-6.03%	10.78%	24.07%	8.88%

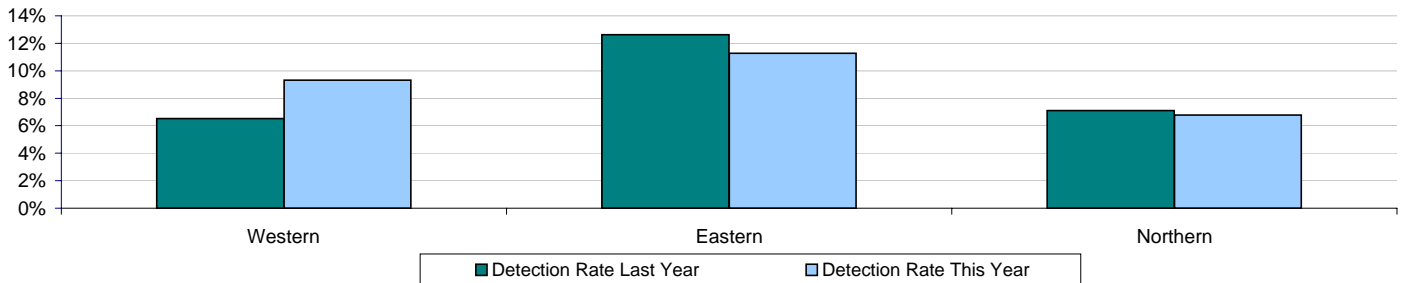
	Force
MSG position	5 of 8
MSG actual	1.21
MSG average	1.15



Detections	Western	Eastern	Northern	Force
YTD Detection Rate	9.32%	11.27%	6.79%	8.90%
This month	11.46%	13.46%	7.09%	10.26%
YTD 10/11 Detections	6.52%	12.61%	7.11%	8.44%

	Force
MSG position	4 of 8
MSG actual	8.25
MSG average	9.27

Note: Detections refer to Sanction Detections ONLY



Monitoring information for protecting our communities

Domestic Crimes and Incidents

YTD July 2011	Western	Eastern	Northern	Force
Domestic Crimes	974	1146	752	2872
Domestic Detection Rate	35.83%	39.62%	38.30%	37.99%
Domestic Crimes Arrests	675	904	554	2133
Domestic Crime Arrest Rate	69.30%	78.88%	73.67%	74.27%

YTD July 2011	Western	Eastern	Northern	Force
Domestic Crimes	974	1146	752	2872
Repeat Domestic	248	303	146	697
% Repeat	25.46%	26.44%	19.41%	24.27%

Domestic Incidents	2821	3321	2125	8267
Repeat Domestic	1294	1563	836	3693
% Repeat	45.87%	47.06%	39.34%	44.67%

Hate Crimes and Incidents

YTD July 2011	Western	Eastern	Northern	Force
Incidents	235	255	124	614
Crimes	157	172	88	417
Detections	69	67	47	183
Detection rate	43.95%	38.95%	53.41%	43.88%

Class A drug detections

	Western	Eastern	Northern	Force
YTD July 2011	13	17	22	52
YTD July 2010	76	27	28	131
% change from 10/11	-82.9%	-37.0%	-21.4%	-60.3%

Drug seizures information

	Central	Isle of Wight	North & East	Portsmouth	Southampton	Western	Force
YTD March 2011	832	1242	856	784	1088	685	5487
YTD March 2010	1127	1371	1054	780	1164	633	6129
% change from 10/11	-26.2%	-9.4%	-18.8%	0.5%	-6.5%	8.2%	-10.5%

This data is collated quarterly.

Gun crime rate

	Central	Isle of Wight	North & East	Portsmouth	Southampton	Western	Force	MSG position to Mar 2011
YTD July 2011	7	3	10	3	9	3	35	4 of 8
YTD July 2010	8	2	13	4	10	5	42	
% change from 10/11	-12.5%	100.0%	-23.1%	-25.0%	-10.0%	-40.0%	-16.7%	

Gun crime figures published reflect the APACS technical definition which includes "where the victim is convinced of the presence of a firearm, even if it is concealed and there is evidence of the suspect's intention to create this impression".

Knife crime rate

	Central	Isle of Wight	North & East	Portsmouth	Southampton	Western	Force	MSG position to Dec 2010
YTD July 2011	24	3	26	20	48	18	139	3 of 8
YTD July 2010	29	10	32	32	47	14	164	
% change from 10/11	-17.2%	-70.0%	-18.8%	-37.5%	2.1%	28.6%	-15.2%	

Knife = knife or other sharp instrument (including broken glass/bottles) piercing the skin or, for threats and attempts, instruments normally capable of piercing the skin. The measure for counting broken glass/bottles changed for 09-10 with less occurrences being counted by the Home Office. Knife crime figures published reflect the APACS technical definition which includes "where the victim is convinced of the presence of a knife, even if it is concealed and there is evidence of the suspect's intention to create this impression".

Monitoring information for protecting our communities

Note: Year to date (YTD) in relation to casualty data is January to December

Casualty reduction

	YTD 2011	YTD 2010	% change from 2010	June 2011	June 2010	% change from 2010
Basingstoke & Deane BC	43	42	2.4%	10	10	0.0%
Eastleigh BC	29	26	11.5%	2	3	-33.3%
Fareham BC	28	28	0.0%	3	3	0.0%
Gosport BC	11	15	-26.7%	2	3	-33.3%
Hart DC	37	20	85.0%	4	6	-33.3%
Havant BC	19	15	26.7%	5	0	-
New Forest DC	64	43	48.8%	13	12	8.3%
East Hants DC	41	25	64.0%	5	4	25.0%
Portsmouth Unitary Authority	63	47	34.0%	5	6	-16.7%
Rushmoor BC	19	14	35.7%	5	1	400.0%
Southampton Unitary Authority	79	56	41.1%	17	10	70.0%
Test Valley BC	39	30	30.0%	5	8	-37.5%
Winchester CC	43	47	-8.5%	9	5	80.0%
Isle of Wight Unitary Authority	50	39	28.2%	9	9	0.0%
Force	565	447	26.4%	94	80	17.5%

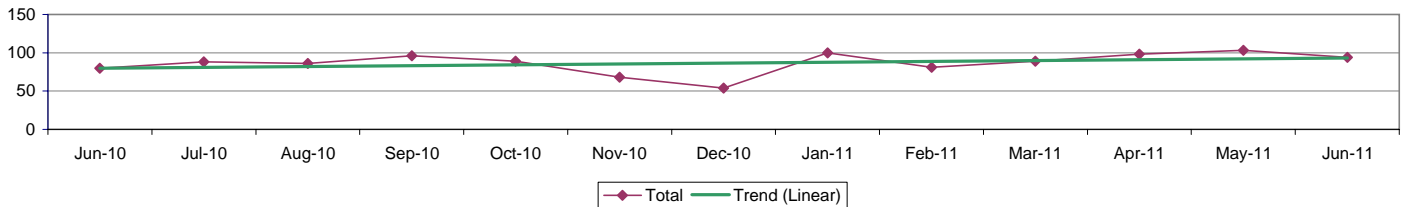
BC = Borough Council

CC = County Council

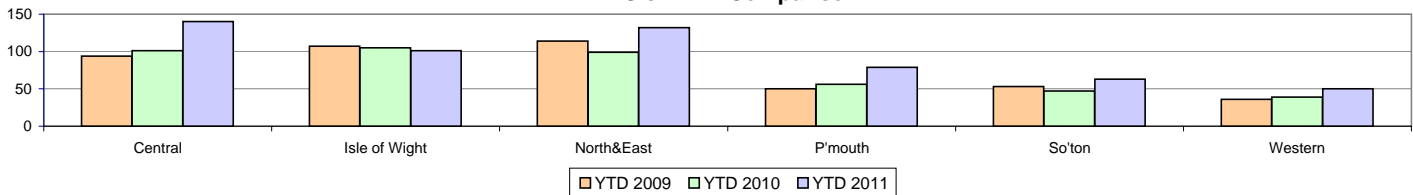
DC = District Council

KSI = Killed / seriously injured

All KSI Casualties



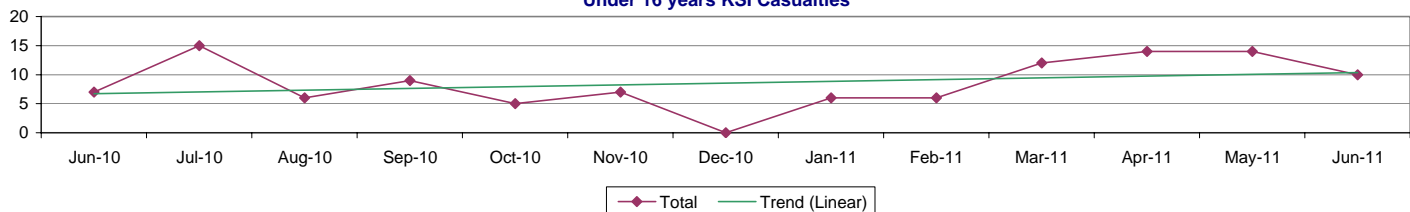
All KSIs - YTD Comparison



Under 16 KSI casualties

	YTD 2011	YTD 2010	% change from 2010	Mar 2011	Mar 2010	% change from 2010
Basingstoke & Deane BC	5	2	150.0%	0	0	-
Eastleigh BC	3	1	200.0%	0	1	-100.0%
Fareham BC	1	3	-66.7%	0	0	-
Gosport BC	5	4	25.0%	2	1	100.0%
Hart DC	2	0	-	0	0	-
Havant BC	4	5	-20.0%	0	2	-100.0%
New Forest DC	5	2	150.0%	1	1	0.0%
East Hants DC	2	0	-	0	0	-
Portsmouth Unitary Authority	11	5	120.0%	1	1	0.0%
Rushmoor BC	2	3	-33.3%	0	1	-100.0%
Southampton Unitary Authority	10	4	150.0%	0	0	-
Test Valley BC	2	2	0.0%	1	0	-
Winchester CC	3	6	-50.0%	0	1	-100.0%
Isle of Wight Unitary Authority	7	8	-12.1%	2	2	-
Force	62	45	37.8%	7	10	-30.0%

Under 16 years KSI Casualties



Monitoring information for protecting our communities

POCA - Actual Cash Seizure Value (Forfeited) by month

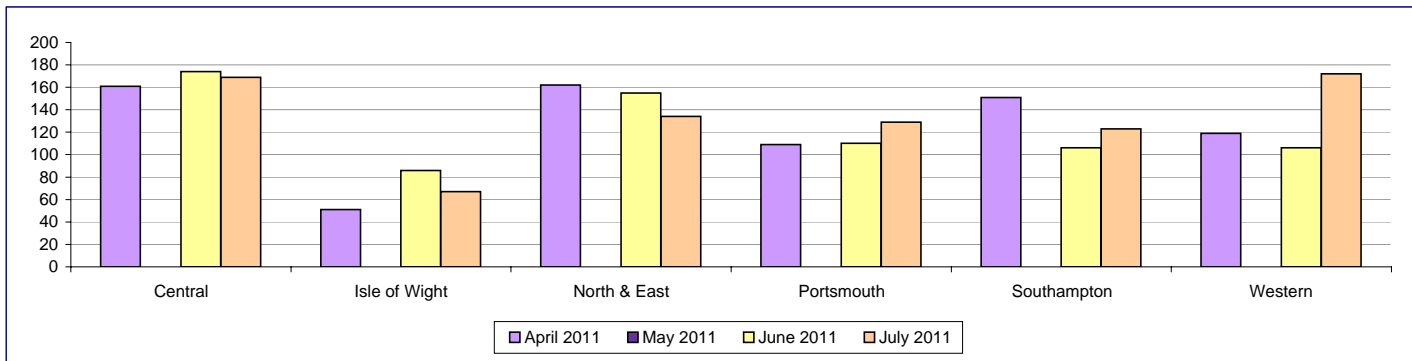
Data not supplied for February 2011, March 2011, April 2011, May 2011, June 2011, July 2011

	Central	Isle of Wight	North & East	Portsmouth	Southampton	Western	Crime OCU	Operations	Force
April 2010	£0.00	£0.00	£1,745.00	£152,477.62	£6,000.00	£0.00	£0.00	£0.00	£160,222.62
May 2010	£0.00	£2,385.00	£7,440.00	£1,970.00	£0.00	£0.00	£0.00	£0.00	£11,795.00
June 2010	£0.00	£0.00	£4,804.86	£682.44	£4,205.00	£0.00	£0.00	£0.00	£9,692.30
July 2010	£3,298.52	£0.00	£4,660.00	£0.00	£0.00	£4,241.30	£24,910.00	£0.00	£37,109.82
August 2010	£5,096.16	£0.00	£0.00	£1,700.00	£1,300.00	£0.00	£0.00	£0.00	£8,096.16
September 2010	£2,000.00	£1,035.00	£5,632.39	£0.00	£17,900.00	£1,000.00	£0.00	£0.00	£27,567.39
October 2010	£0.00	£3,920.00	£0.00	£3,801.67	£0.00	£0.00	£2,500.00	£2,500.00	£12,721.67
November 2010	£0.00	£0.00	£8,336.59	£1,817.77	£4,830.00	£0.00	£0.00	£0.00	£14,984.36
December 2010	£0.00	£148,468.20	£0.00	£0.00	£0.00	£0.00	£0.00	£0.00	£148,468.20
January 2011	£3,055.05	£0.00	£0.00	£0.00	£2,705.00	£4,917.65	£0.00	£0.00	£10,677.70

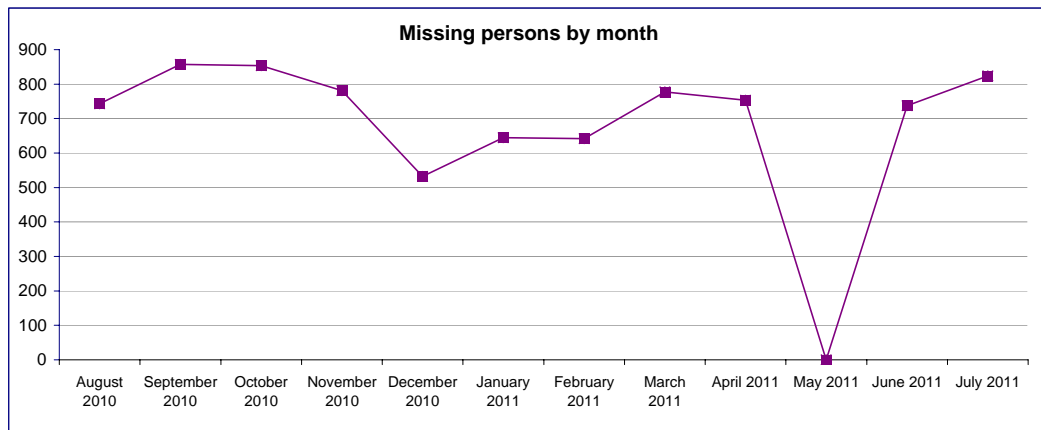
Missing Persons

Breakdown by OCU

	Central	Isle of Wight	North & East	Portsmouth	Southampton	Western	Force
April 2011	161	51	162	109	151	119	753
May 2011	No data	No data	No data	No data	No data	No data	No data
June 2011	174	86	155	110	106	106	737
July 2011	169	67	134	129	123	172	824



	Force
August 2010	743
September 2010	857
October 2010	854
November 2010	781
December 2010	532
January 2011	645
February 2011	642
March 2011	777
April 2011	753
May 2011	NA
June 2011	737
July 2011	824



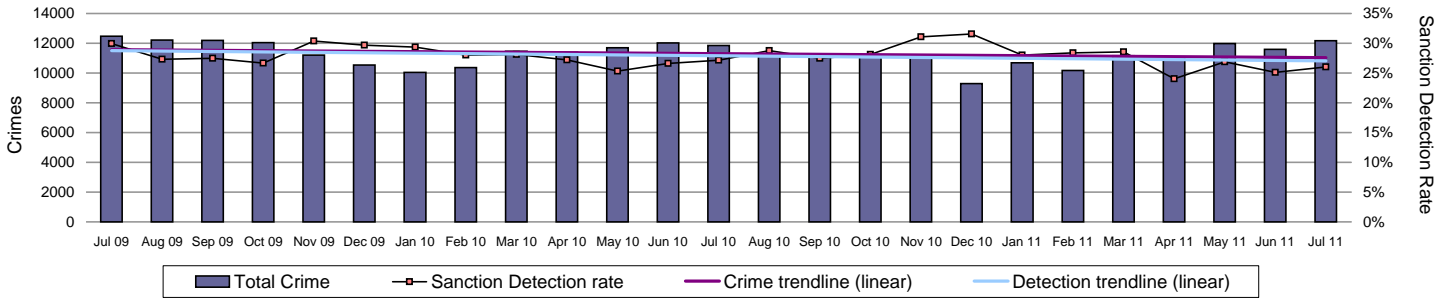
Number of Organised Crime Groups (OCGs) disrupted

YTD July 2011

	2010/2011	2011/2012	Disrupted against identified
Number of OCGs identified and mapped	No data supplied		N/A
Number of OCGs disrupted or partially disrupted through Crime OCU activity	No data supplied		
Number of OCGs subject to tactical activity	No data supplied		

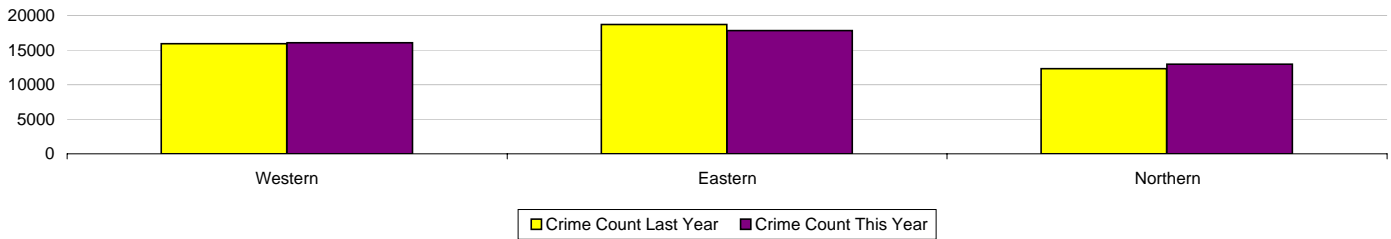
Monitoring information for protecting our communities

All crime



Crimes	Western	Eastern	Northern	Force
YTD Crimes	16087	17806	12940	46833
YTD 10/11 Crimes	15948	18720	12311	46979
This month	4074	4717	3385	12176
% change from 10/11	0.87%	-4.88%	5.11%	-0.31%

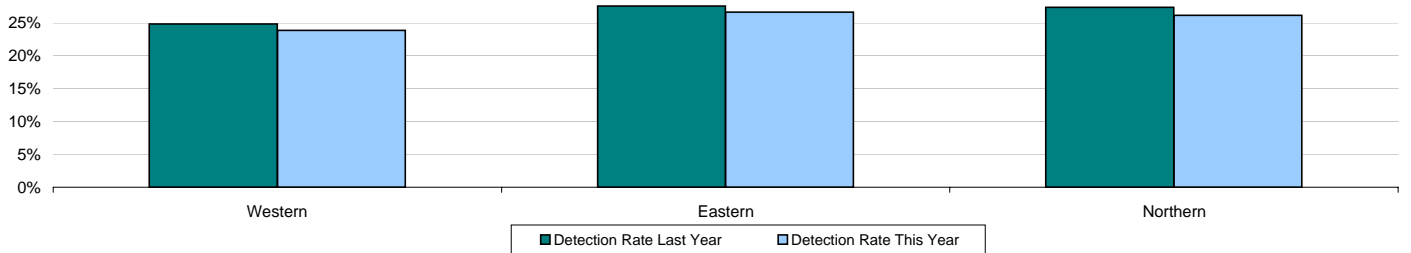
	Force
MSG position	7 of 8
MSG actual	18.64
MSG average	17.15



Detections	Western	Eastern	Northern	Force
YTD Detection Rate	23.85%	26.64%	26.15%	25.55%
This month	24.84%	27.33%	25.64%	26.03%
YTD 10/11 Detections	24.84%	27.54%	27.36%	26.57%

	Force
MSG position	6 of 8
MSG actual	27.69%
MSG average	28.98%

Note: Detections refer to Sanction Detections ONLY



Force target areas making the most of our resources

	Target	Actual
BME Workforce population	2%	2.14%
Effective use of specials	550	272
Cost reductions and savings	To maintain top quartile position	7 of 41
Protecting the frontline	2224	2238

BME workforce population

The 2011/2012 target is to retain 2% of all officers and staff as BME

BME retention	All staff	Minority ethnic staff	Percentage
YTD July 2011	5987.96	128.39	2.14%

Police officer	Police officers	Minority ethnic police officers	Percentage
YTD July 2011	3591.43	84.4	2.35%

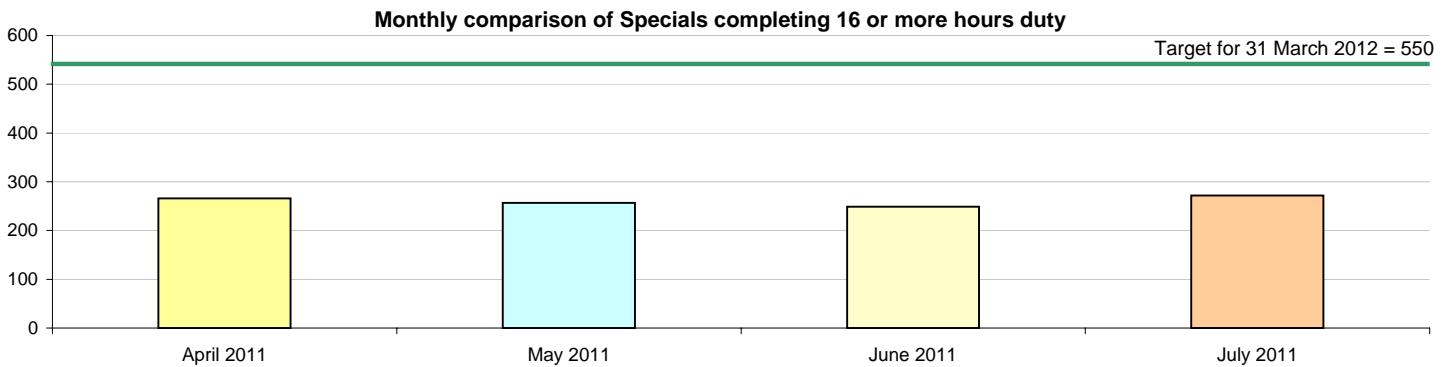
Police staff (incl PCSOs)	Police staff	Minority ethnic police staff	Percentage
YTD July 2011	2396.53	43.99	1.84%

Effective use of specials/volunteers

	Target	Force
July 2011	550	272

This target shows the number of special constables who are delivering 16 hours or more of duty per month

Note: There were 256 Specials who completed an average of 16 hours per month during the first quarter (April - June 2011)



Force target areas making the most of our resources

Special Constable Balanced Scorecard

	Western	Eastern	Northern	RPU	CS/CQ	Force
Total number of officers	145	177	146	6	7	481
Number of officers on leave of absence	7	8	10	0	0	25
Total number of operational hours	2990	4573	3513	121	124	11321
Number of operational hours per 1000 population	5.6	7.2	5.8	N/A	N/A	6.3
Average number of operational hours per officer	21.7	27.1	25.8	20.2	17.8	24.6
Leavers joining regular service or transferring to another Force	0	0	0	0	0	0
Leavers not joining regular service or transferring to another Force	1	1	1	0	0	3
Number of officers completing 16 hours or more of duty per month	78	105	82	3	4	272
% of Officers completing 16 or more hours duty per month	54%	59%	56%	50%	57%	57%

Gender	Western	Eastern	Northern	RPU	CS/CQ	Force
Male	106	121	102	6	6	341
Female	40	56	43	0	1	140

Ethnicity	Western	Eastern	Northern	RPU	CS/CQ	Force
White	141	172	143	6	7	469
Mixed	0	3	0	0	0	3
Black or black British	2	0	2	0	0	4
Asian or asian British	1	1	1	0	0	3
Chinese or other	1	1	0	0	0	2

Age	Western	Eastern	Northern	RPU	CS/CQ	Force
25 and under	61	91	44	0	0	196
26 to 40	67	56	64	2	2	191
41 to 55	16	24	28	3	2	73
Over 55	1	7	9	1	3	21

Length of service	Western	Eastern	Northern	RPU	CS/CQ	Force
up to 1 year	49	60	44	0	0	153
1yr to 5 years	78	92	59	0	1	230
5 to 10 years	13	11	20	1	0	45
10 to 15 years	0	7	13	3	1	24
15 to 20 years	2	3	9	2	2	18
20 to 25 years	2	2	0	0	1	5
25 years and over	1	2	1	0	2	6
Number of joiners	5	5	4	N/A	N/A	14

Note: RPU - Roads Policing Unit CS/CQ - Central Support Departments

Force target areas making the most of our resources

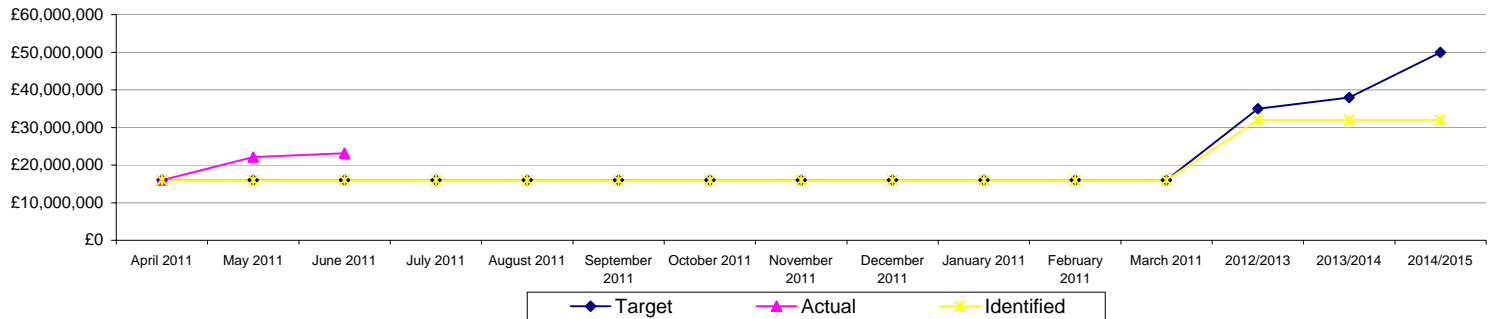
Finance

	Savings		
	Target	Actual	Identified
April 2011	£16,000,000	£16,000,000	£16,000,000
May 2011	£16,000,000	£22,155,000	£16,000,000
June 2011	£16,000,000	£23,164,000	£16,000,000
July 2011	£16,000,000		£16,000,000
August 2011	£16,000,000		£16,000,000
September 2011	£16,000,000		£16,000,000
October 2011	£16,000,000		£16,000,000
November 2011	£16,000,000		£16,000,000
December 2011	£16,000,000		£16,000,000
January 2011	£16,000,000		£16,000,000
February 2011	£16,000,000		£16,000,000
March 2011	£16,000,000		£16,000,000
2012/2013	£35,000,000		£32,000,000
2013/2014	£38,000,000		£32,000,000
2014/2015	£50,000,000		£32,000,000
Total	£50,000,000		£44,500,000

National position for value for money
7 of 41

Note: National position excludes Metropolitan Police and City of London Police

Savings



The savings chart shows:

Savings target - across all four years i.e. cumulatively this is £16m, £35m, £38m, £50m

Savings actual - this is the base budget reduction +/- the in year projected over/underspend

Savings identified - this is helpful to see the value of savings identified

The combination of data shows how much savings have been identified against the savings targets. It also shows how much is being saved against target

Note:

If the pink line (actual) is above the blue line (target) then we are underspending in year (saving more than the savings target)

The yellow line (savings identified) needs to reach the blue line (target) in order to identify sufficient savings to meet the target

Protecting the frontline

The number of full time equivalents (FTE) undertaking response policing, neighbourhood policing and local crime investigation will be protected at a minimum of 2224 on average per month throughout 2011-2012

July 2011	Target	Average
Frontline Staff	2224	2238