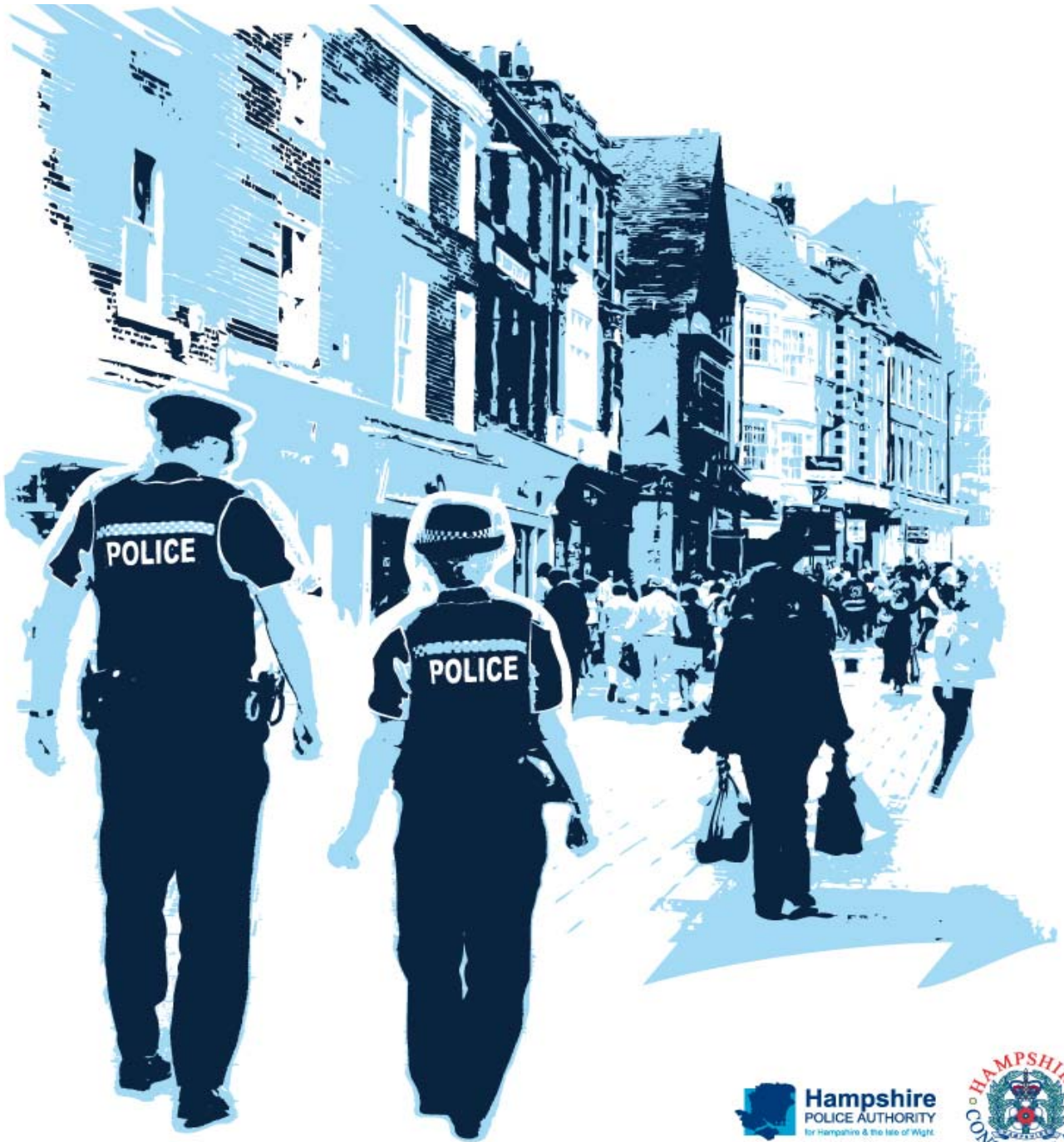


# Performance Profile October 2010



# Summary and index

## Summary

### 2010/11 Reporting Year

This document contains a strategic overview of the Constabulary's performance. It has a variety of performance measures within it. The format of the profile has been aligned to the Policing Priorities identified by the Control Strategy. It provides information on our performance against Force targets, some of the APACS Indicators and the Policing Pledge. It also aims to provide supplementary information to assist in understanding reasons behind the performance in these areas. It has been designed as a headline document that will enable our customers, both internally and externally, to easily assess performance information for key domains. This year additional monitoring information within the six domains of the Policing Priorities will be published quarterly - a calendar of publication is located at the bottom of this page. If during a month an issue is identified which needs to be highlighted this will be done through 'exception reporting'.

A matrix can be found at the front of the profile which reflects our year to date performance against our targets.

Performance in key areas is then explored in more depth with an indication of where each measure has originated - for example, APACS Indicator or a Force Control Strategy (FCS) measure.

Where applicable, within the document, MSG (Most Similar Group) data is published along with the crime and detection data. MSGs are calculated by the Home Office based on a number of socio-demographic & geographic variables which are strongly linked to crime/incident levels and the fear of crime. These groups provide a benchmark for comparison of crime and detection rates. Below the applicable crime tables there are three rows relating to MSG data. The first provides the MSG position for the OCU/Force for that crime type. The second displays OCU Actual, this is the number of offences per 1,000 population. The third row shows the MSG Average which is the total number of offences per 1,000 population divided by the number within the MSG. The same three rows are provided in relation to detection data, where data is provided in % figures rather than per 1,000 population.

Please note: iQuanta data is provisional. Within the profile, Hampshire data is published and compared against the MSG average. The other forces within Hampshire's MSG are: Avon and Somerset, Bedfordshire, Essex Hertfordshire, Kent, Sussex and Thames Valley. We are unable to provide figures from iQuanta for these forces, due to the provisional nature of this data.

This document is then taken forward by key stakeholders within the organisation to the Force Performance Review Group, where it is used to highlight areas of good performance and those for development.

Crime OCU contribute to the following areas within this document, either via investigation, forensic support, and/or review of these crimes: homicide, serious violent, sexual and acquisitive crime, class A drug supply, drug seizures, domestic violence/hate crime, FIU form submissions, gun/knife crime (where this results in a major investigation/forensic support).

This is an evolving document and as such, the contents of which may alter over time and any feedback would be welcomed by the Performance Review Team.

### Calendar of Quarterly Reporting

April - Catching criminals & managing offenders and Protecting our communities  
May - Making the most of our resources and Equipping our team to deliver  
June - Providing an excellent service and An active presence in every neighbourhood  
July - Catching criminals & managing offenders and Protecting our communities  
August - Making the most of our resources and Equipping our team to deliver  
September - Providing an excellent service and An active presence in every neighbourhood  
October - Catching criminals & managing offenders and Protecting our communities  
November - Making the most of our resources and Equipping our team to deliver  
December - Providing an excellent service and An active presence in every neighbourhood  
January - Catching criminals & managing offenders and Protecting our communities  
February - Making the most of our resources and Equipping our team to deliver  
March - The year end profile will have all six domain areas included

### MSG Colour Key

Force	OCU
1-2	1-4
3-4	5-8
5-6	9-12
7-8	13-15

## Index

Page	FCS = Force Control Strategy			
<b>Year to date performance matrix</b>				
4				including notes on matrices terminology
<b>Providing an excellent service</b>				
5	National public confidence measure	APACS 2.2	FCS	iQuanta
5	Local confidence survey data		FCS	Consultation & Research Team
6	Overall satisfaction	APACS 1.1	FCS	Consultation & Research Team
6	Being kept informed			Consultation & Research Team
6	Comparative satisfaction of minority ethnic groups	APACS 1.3		Consultation & Research Team
6	Satisfaction of victims of racist incidents	APACS 1.2		Consultation & Research Team
6	MSG user satisfaction data			Consultation & Research Team
<b>An active presence in every neighbourhood</b>				
7	Rowdy and nuisance behaviour		FCS	Business Objects
8	Criminal damage		FCS	Business Objects
<b>Catching criminals and managing offenders</b>				
9	Serious acquisitive crime	APACS 5.2	FCS	Business Objects
10	Breakdown: Robbery, dwelling burglary, vehicle crime			Business Objects
10	Breakdown: Theft of a motor vehicle, theft from a motor vehicle			Business Objects
10	Organised crime groups		FCS	7 OCU Performance Team
<b>Protecting our communities</b>				
11	Violence against the person with injury		FCS	Business Objects
12	Serious violent crime	APACS 5.1		Business Objects
13	Assault with less serious injury	APACS 5.3		Business Objects
14	Reduction in dwelling burglary		FCS	Business Objects
<b>Making the most of our resources</b>				
15	BME recruitment		FCS	Personnel
15	Minority ethnic officer recruitment	APACS 3.1		Personnel
15	Minority ethnic police staff recruitment			Personnel
15	Female officer representation	APACS 3.2		Personnel
<b>Equipping our team to deliver</b>				
15	Staff confidence in the organisation		FCS	Consultation & Research Team
<b>Monitoring information for Catching criminals and managing offenders</b>				
16	Serious sexual offences - detections			Business Objects
16	Class A drugs sanction detections			Business Objects
17	Arrest and disposal types by OCU			Business Objects
17	Percentage bailed on first submission			CJD Performance
17	Forensic results for vehicle crime			Scientific Services
17	Outstanding suspects			Business Objects
<b>Monitoring information for Protecting our communities</b>				
18	All crime			Business Objects
19	Non-dwelling burglary			Business Objects
20	Prolific and other priority offenders (PPOs) convictions			CJD Performance
20	FIU1 submissions			7 OCU and Business Objects
20	MAPPA visits			7 OCU Crime
20	Actual cash seizure value			7 OCU Crime
21	Gun crime	APACS 5.5		Business Objects
21	Knife crime	APACS 5.6		Business Objects
21	Murder offences	APACS 5.4		Business Objects
21	Arrest crimes and incidents			Business Objects
21	Hate crimes and incidents			Business Objects
22	Missing persons			7 OCU Crime
23	Casualty reduction			8 OCU Performance
23	Perception of drug use			Consultation & Research Team
<b>Exception report for Making the most of our resources</b>				
24	Special Constable Balanced Scorecard			Finance

## Year to date performance targets matrix

	Target	Actual	Central	Isle of Wight	North & East	Portsmouth	Southampton	Western
<b>Providing an excellent service</b>								
Confidence in local police	55.3%	52.9%	This is a Force measure					
Local confidence measure (latest quarter)	87.3%	83.0%	84.0%	83.0%	83.0%	82.0%	81.0%	83.0%
Overall satisfaction (data for rolling 12 months)	68.0%	69.0%	70.0%	68.0%	70.0%	67.0%	66.0%	72.0%
<b>An active presence in every neighbourhood</b>								
Rowdy & nuisance behaviour (inc vehicle nuisance)	<40658	39940	6980	2796	7415	6530	9572	6647
	OCU specific targets		8054	2668	7512	6348	9094	6982
Reduce criminal damage	<16075	14923	3053	1365	2786	2020	3087	2612
	OCU specific targets		3484	1185	3143	2076	3299	2888
<b>Catching criminals &amp; managing offenders</b>								
Serious acquisitive crime SD	>15%	12.2%	16.0%	18.0%	11.5%	9.9%	10.8%	11.4%
Organised crime group (OCG) - disruptions	>40%	data not provided	Owned by Crime OCU					
<b>Protecting our communities</b>								
Reduce violence against the person with injury	<8403	8552	1759	789	1328	1552	1881	1243
	OCU specific targets		1707	574	1385	1501	1956	1280
Reduction in dwelling burglary	<3131	2867	495	160	485	564	755	408
	OCU specific targets		615	150	659	576	595	536
<b>Making the most of our resources</b>								
BME recruitment	>5%	5.5%	This is a Force measure					
<b>Equipping our staff to deliver</b>								
Staff confidence in the organisation	61%	data unavailable	This is a Force measure					
<b>Force Total - targets achieved</b>		<b>5</b>	<b>5</b>	<b>2</b>	<b>5</b>	<b>2</b>	<b>2</b>	<b>5</b>

### Notes to be read in conjunction with matrices

All citizen focus data  
SD  
BME  
OCU specific targets

Based on "completely or very satisfied"  
Sanction detections  
Black and minority ethnic  
OCU specific targets are rounded to 0 decimal places; the actual figure may therefore seem the same but appear amber due to this rounding

## Force target areas for providing an excellent service

	Target	Actual	Central	Isle of Wight	North & East	Portsmouth	Southampton	Western
Confidence in local police (latest data)	55.3%	52.9%	This is a Force measure					
Local Confidence Measure (latest data)	87.3%	83.0%	84.0%	83.0%	83.0%	82.0%	81.0%	83.0%
Overall satisfaction (rolling 12 months)	68.0%	69.0%	70.0%	68.0%	70.0%	67.0%	66.0%	72.0%

### British Crime Survey Confidence Data

APACS 2.2 Force Target

This data is updated by iQuanta approximately every quarter

### National Public Confidence Measure

Jun-10

Hampshire	52.9%
MSG Position	2 of 8
MSG average	51.2%

This data is based on 'The police and local council are dealing with the anti-social behaviour and crime issues that matter in this area'

The Home Office has set a target to achieve a 12% improvement by 2012 against the baseline of 47.3%

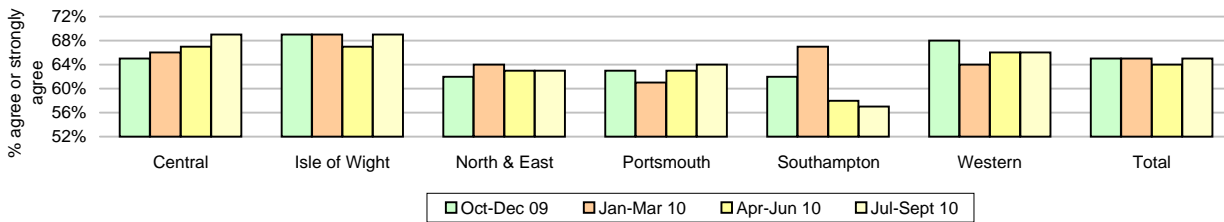
This year's required improvement is 4%

### Local Confidence/Public Attitude Survey Data

Figures relate to the percentage of respondents who agree or strongly agree with the question. Hampshire's local surveys have a confidence level of +/-4%. This means that changes of less than 4% may not reflect a real change in performance.

### The police are dealing with the things that matter locally

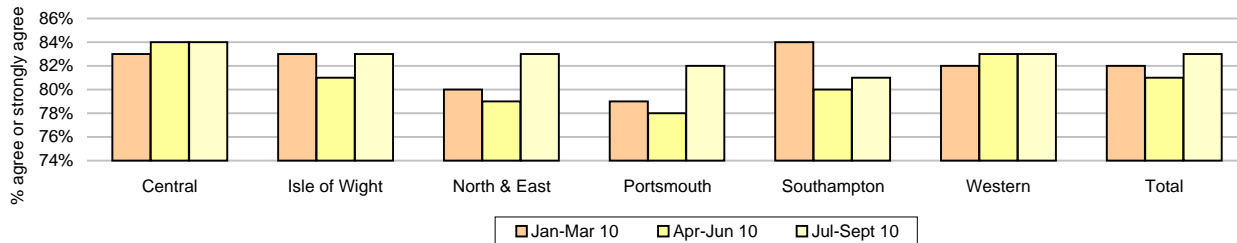
	Central	Isle of Wight	North & East	Portsmouth	Southampton	Western	Force	No. Surveys
Oct - Dec 2009	65%	69%	62%	63%	62%	68%	65%	3822
Jan - March 2010	66%	69%	64%	61%	67%	64%	65%	3708
April - June 2010	67%	67%	63%	63%	58%	66%	64%	3612
July - Sept 2010	69%	69%	63%	64%	57%	66%	65%	3620



### Taking everything into account, I have confidence in the Police in this area

Force Target

	Central	Isle of Wight	North & East	Portsmouth	Southampton	Western	Total	No. Surveys
Jan - March 2010	83%	83%	80%	79%	84%	82%	82%	3708
April - June 2010	84%	81%	79%	78%	80%	83%	81%	3612
July - Sept 2010	84%	83%	83%	82%	81%	83%	83%	3620



## Force target areas for providing an excellent service

### Overall satisfaction (user satisfaction survey results)

APACS 1.1 Force Target

Rolling 12 months data relates to: Nov 09 - Oct 10; rolling 3 months data relates to Aug 10 - Oct 10

Overall satisfaction includes burglary, vehicle crime, violent crime and minor injury RTCs

Target 68%	Central	Isle of Wight	North & East	Portsmouth	Southampton	Western	Force	No. Surveys
Rolling 12 months	70%	68%	70%	67%	66%	72%	69%	7586
Rolling 3 months	68%	63%	65%	66%	61%	71%	66%	1851

### Being kept informed (user satisfaction survey results)

Rolling 12 months data relates to: Nov 09 - Oct 10; rolling 3 months data relates to Aug 10 - Oct 10

Being kept informed includes burglary, vehicle crime, violent crime and minor injury RTCs

	Central	Isle of Wight	North & East	Portsmouth	Southampton	Western	Force	No. Surveys
Rolling 12 months	59%	61%	59%	56%	58%	63%	59%	7375
Rolling 3 months	52%	55%	55%	54%	52%	59%	55%	1812

### Comparative satisfaction of minority ethnic groups

APACS 1.3

Data relates to interviews which took place Nov 09 - Oct 10

These figures are for overall satisfaction for burglary, vehicle crime, violent crime, minor injury RTCs.

	Completely and very satisfied	Completely, very and fairly satisfied	No. Surveys
White	69.7%	85.5%	7187
Minority Ethnic	56.6%	79.5%	459
Satisfaction Gap	13.1%	6.0%	

### Satisfaction of victims of racist incidents

APACS 1.2

These figures relate to interviews which took place Jul 09 - Jun 10; these will be updated quarterly

Racist incident overall satisfaction = % completely or very satisfied

	Central	Isle of Wight	North & East	Portsmouth	Southampton	Western	Force
Percentage	55%	90%	53%	67%	56%	60%	60%
Number of surveys	33	10	32	48	64	25	212

### MSG information for user satisfaction

iQuanta data for MSG for the 12 months ending June 2010 (iQuanta calculate satisfaction % based on those responding that they are completely, very or fairly satisfied)

	Previous MSG position	Current MSG position	Change		Previous MSG position	Current MSG position	Change
<b>Vehicle crime</b>				<b>Burglary</b>			
Ease of contact	4/8	4/8	↔	Ease of contact	4/8	3/8	↑
Actions taken	4/8	4/8	↔	Actions taken	6/8	5/8	↑
Follow up	4/8	4/8	↔	Follow up	1/8	1/8	↔
Treatment	5/8	5/8	↔	Treatment	5/8	6/8	↓
Whole Experience	4/8	4/8	↔	Whole Experience	4/8	3/8	↑
<b>Violent crime</b>				<b>RTC (minor injury)</b>			
Ease of contact	5/8	5/8	↔	Ease of contact	1/8	1/8	↔
Actions taken	4/8	4/8	↔	Actions taken	2/8	2/8	↔
Follow up	6/8	6/8	↔	Follow up	1/8	1/8	↔
Treatment	5/8	6/8	↓	Treatment	3/8	2/8	↑
Whole Experience	4/8	4/8	↔	Whole Experience	3/8	3/8	↔
<b>All users (excluding racist incidents)</b>							
Ease of contact	1/8	1/8	↔				
Actions taken	4/8	2/8	↑				
Follow up	1/8	1/8	↔				
Treatment	5/8	5/8	↔				
Whole Experience	3/8	3/8	↔				

## Force target areas for an active presence in every neighbourhood

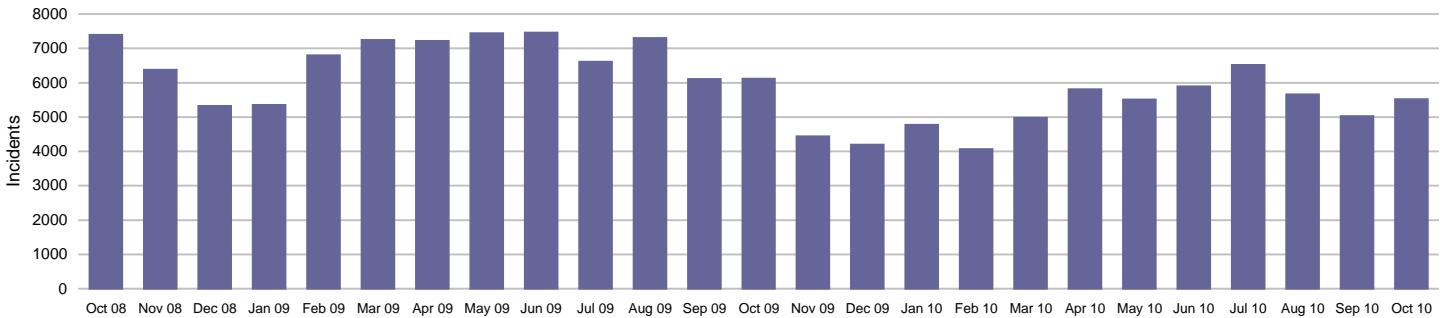
	Target	Actual	Central	Isle of Wight	North & East	Portsmouth	Southampton	Western
<b>Rowdy &amp; nuisance behaviour (inc Vehicle Nuisance)</b>	40658	39940	6980	2796	7415	6530	9572	6647
	OCU specific targets		8054	2668	7512	6348	9094	6982
<b>Reduce criminal damage</b>	16075	14923	3053	1365	2786	2020	3087	2612
	OCU specific targets		3484	1185	3143	2076	3299	2888

### Rowdy & nuisance behaviour (including vehicle)

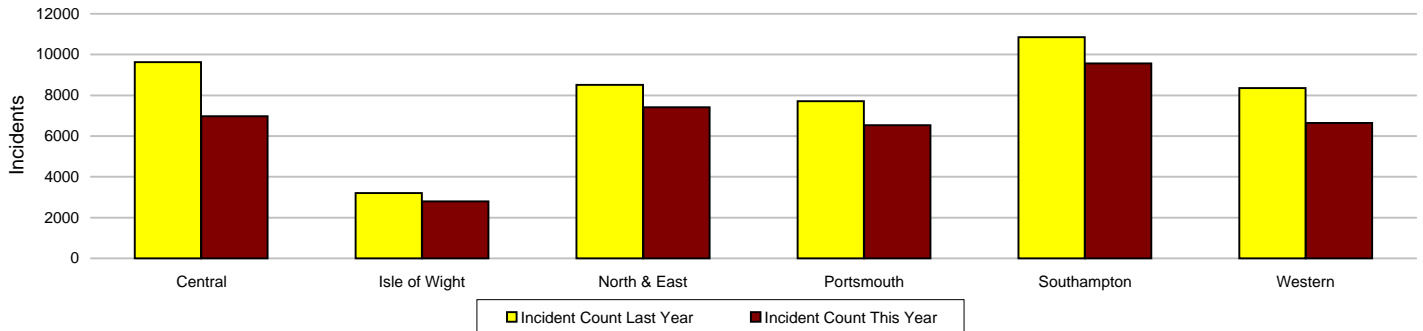
Force Target

In 2009-2010 Rowdy and Nuisance included Inappropriate use of Fireworks, Rowdy & Inconsiderate, Substance Misuse and Street Drinking, with Vehicle Related Nuisance being a separate entity for monitoring purposes however the decision this year has been to bring all key nuisance elements into one section. This data is sourced from RMS and does not reflect the complete NSIR return for Hampshire.

This target is based on a subset of the anti-social behaviour categories, it does not cover all aspects of anti-social behaviour.



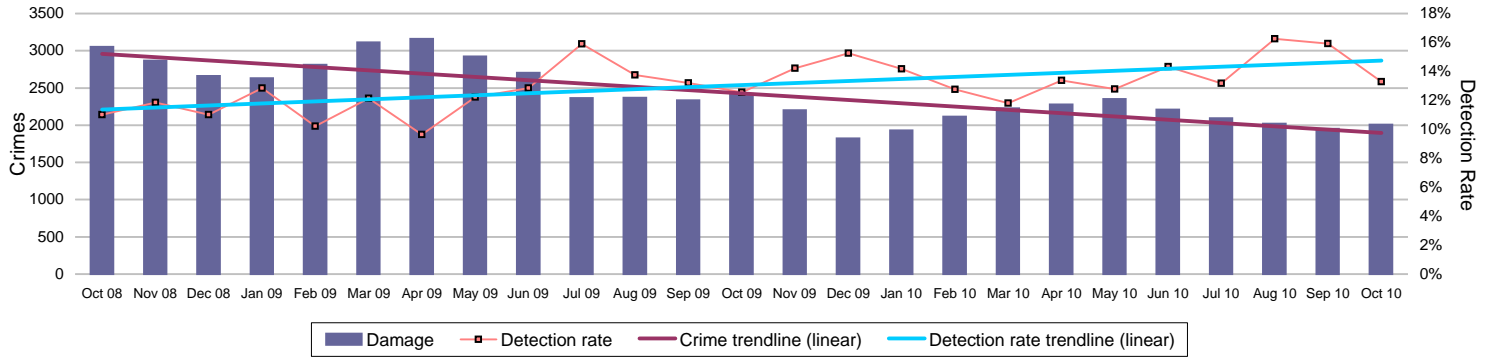
Incidents	Central	Isle of Wight	North & East	Portsmouth	Southampton	Western	Force
<b>YTD Incidents</b>	6980	2796	7415	6530	9572	6647	<b>39940</b>
YTD Target	8054	2668	7512	6348	9094	6982	<b>40658</b>
<b>YTD 09/10 Incidents</b>	9631	3197	8518	7707	10850	8356	<b>48259</b>
This month	1022	353	1061	848	1360	881	<b>5525</b>
% change from 09/10	-27.53%	-12.54%	-12.95%	-15.27%	-11.78%	-20.45%	<b>-17.24%</b>



# Force target areas for an active presence in every neighbourhood

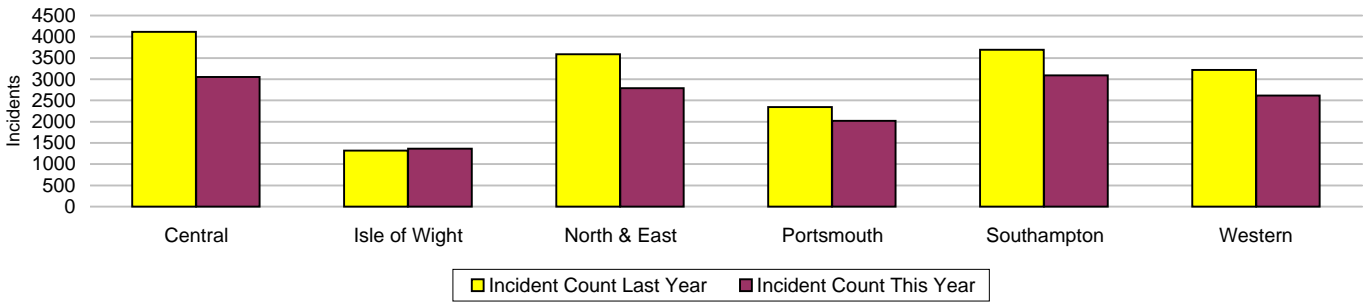
## Criminal damage

Force Target



### Crimes

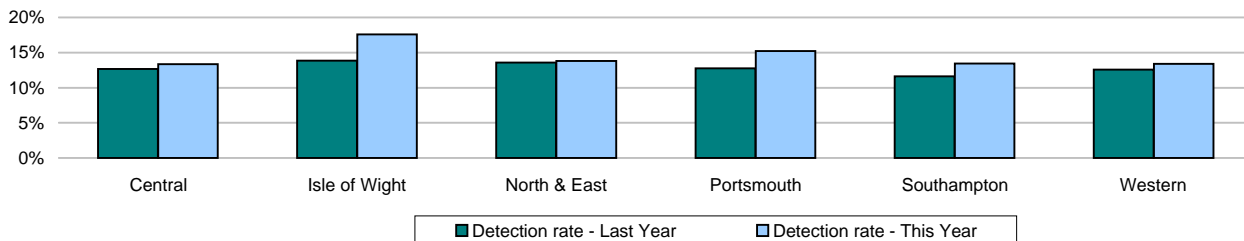
	Central	Isle of Wight	North & East	Portsmouth	Southampton	Western	Force
<b>YTD Crimes</b>	3053	<b>1365</b>	2786	2020	3087	2612	<b>14923</b>
YTD Target	3484	1185	3143	2076	3299	2888	<b>16075</b>
<b>YTD 09/10 Crimes</b>	4112	1321	3589	2342	3690	3221	<b>18275</b>
This month	357	171	365	280	462	375	<b>2010</b>
% change from 09/10	-25.75%	3.33%	-22.37%	-13.75%	-16.34%	-18.91%	<b>-18.34%</b>
MSG position	12 of 15	<b>15 of 15</b>	8 of 15	11 of 15	<b>14 of 15</b>	5 of 15	<b>7 of 8</b>
MSG actual	2.896	4.16	2.627	3.963	5.241	2.526	<b>3.257</b>
MSG average	2.695	3.241	2.651	3.639	3.952	2.724	<b>3.066</b>



### Detections

	Central	Isle of Wight	North & East	Portsmouth	Southampton	Western	Force
<b>YTD Detection Rate</b>	13.36%	17.58%	13.82%	15.20%	13.44%	13.40%	<b>14.11%</b>
This month	12.61%	15.79%	11.51%	17.50%	13.85%	10.67%	<b>13.28%</b>
<b>YTD 09/10 Detections</b>	12.65%	13.85%	13.60%	12.77%	11.60%	12.57%	<b>12.71%</b>
MSG position	9 of 15	<b>5 of 15</b>	10 of 15	2 of 15	<b>6 of 15</b>	6 of 15	<b>6 of 8</b>
MSG actual	12.65%	17.69%	12.94%	15.12%	13.67%	13.20%	<b>13.77%</b>
MSG average	13.19%	14.80%	13.76%	12.83%	13.74%	13.08%	<b>14.12%</b>

Note: Detections refer to Sanction Detections ONLY



# Force target areas for catching criminals and managing offenders

	Target	Actual	Central	Isle of Wight	North & East	Portsmouth	Southampton	Western
Serious acquisitive detection rate	15%	12.2%	16.0%	18.0%	11.5%	9.9%	10.8%	11.4%
OCG disruptions	40%	not supplied	Owned by Crime OCU					

## Serious acquisitive crime

APACS 5.2 Force Target

Serious acquisitive crime consists of crimsec codes 28, 29, 34A, 34B, 37/2, 45 and 48



### Crimes

	Central	Isle of Wight	North & East	Portsmouth	Southampton	Western	Force
YTD Crimes	1882	511	1805	1822	2322	1888	10230
YTD 09/10 Crimes	2260	490	2147	1911	2137	2094	11039
This month	246	63	240	226	412	308	1495
% change from 09/10	-16.73%	4.29%	-15.93%	-4.66%	8.66%	-9.84%	-7.33%
MSG actual	8 of 15	4 of 15	3 of 15	5 of 15	9 of 15	8 of 15	2 of 8
MSG average	1.925	1.591	1.793	4.063	4.306	1.923	2.398
MSG average	2.255	2.088	2.232	4.28	4.116	2.051	2.781

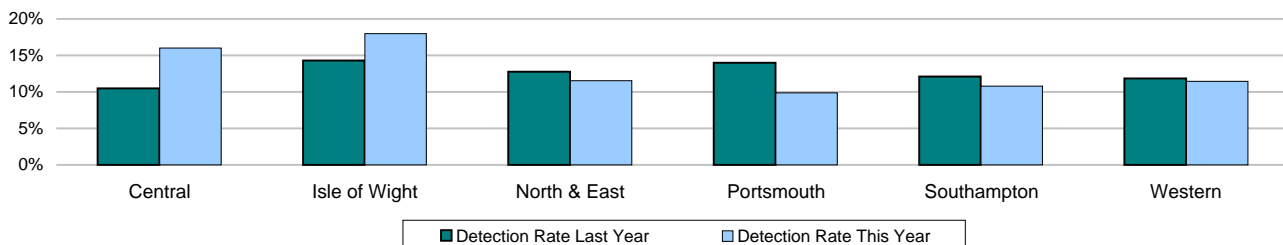


### Detections

Target >15%

	Central	Isle of Wight	North & East	Portsmouth	Southampton	Western	Force
YTD Detection Rate	15.99%	18.00%	11.52%	9.88%	10.81%	11.44%	12.20%
This month	32.93%	11.11%	10.83%	7.08%	7.28%	5.84%	11.91%
YTD 09/10 Detections	10.49%	14.29%	12.76%	13.97%	12.12%	11.84%	12.27%
MSG position	12 of 15	8 of 15	12 of 15	10 of 15	10 of 15	11 of 15	5 of 8
MSG actual	11.08%	17.30%	10.02%	11.26%	12.19%	11.41%	11.48%
MSG average	13.08%	16.55%	13.14%	12.43%	14.83%	12.95%	12.82%

Note: Detections refer to Sanction Detections ONLY



# Force target areas for catching criminals and managing offenders

## Serious acquisitive crime breakdown

### Robbery

Year to date	Central	Isle of Wight	North & East	Portsmouth	Southampton	Western	Force
Crimes	54	16	121	148	252	65	<b>656</b>
09/10 crimes	61	15	97	139	227	83	<b>622</b>
% change from 09/10	-11.48%	6.67%	24.74%	6.47%	11.01%	-21.69%	<b>5.47%</b>
MSG position	5 of 15	4 of 15	10 of 15	7 of 15	12 of 15	11 of 15	<b>3 of 8</b>
Detection rate	25.93%	37.50%	22.31%	16.89%	23.41%	29.23%	<b>22.87%</b>
MSG position	6 of 15	2 of 15	12 of 15	10 of 15	10 of 15	7 of 15	<b>4 of 8</b>
October 2010	Central	Isle of Wight	North & East	Portsmouth	Southampton	Western	Force
Crimes	8	1	18	19	47	6	<b>99</b>
Detection rate	62.50%	0.00%	11.11%	0.00%	14.89%	16.67%	<b>15.15%</b>

### Dwelling burglary

Year to date	Central	Isle of Wight	North & East	Portsmouth	Southampton	Western	Force
Crimes	495	160	485	564	755	408	<b>2867</b>
09/10 crimes	676	163	676	569	636	503	<b>3223</b>
% change from 09/10	-26.78%	-1.84%	-28.25%	-0.88%	18.71%	-18.89%	<b>-11.05%</b>
MSG position	5 of 15	5 of 15	2 of 15	2 of 15	7 of 15	1 of 15	<b>2 of 8</b>
Detection rate	22.42%	16.88%	12.58%	12.41%	16.56%	19.85%	<b>16.57%</b>
MSG position	11 of 15	10 of 15	14 of 15	9 of 15	9 of 15	4 of 15	<b>4 of 8</b>
October 2010	Central	Isle of Wight	North & East	Portsmouth	Southampton	Western	Force
Crimes	58	15	70	78	130	60	<b>411</b>
Detection rate	53.45%	6.67%	12.86%	6.41%	12.31%	10.00%	<b>16.55%</b>

### Vehicle crime

Year to date	Central	Isle of Wight	North & East	Portsmouth	Southampton	Western	Force
Crimes	1333	335	1199	1110	1315	1415	<b>6707</b>
09/10 crimes	1523	312	1374	1203	1274	1508	<b>7194</b>
% change from 09/10	-12.48%	7.37%	-12.74%	-7.73%	3.22%	-6.17%	<b>-6.77%</b>
MSG position	9 of 15	2 of 15	5 of 15	12 of 15	8 of 15	12 of 15	<b>3 of 8</b>
Detection rate	13.20%	17.61%	10.01%	7.66%	5.10%	8.20%	<b>9.29%</b>
MSG position	11 of 15	6 of 15	10 of 15	10 of 15	13 of 15	13 of 15	<b>6 of 8</b>
October 2010	Central	Isle of Wight	North & East	Portsmouth	Southampton	Western	Force
Crimes	180	47	152	129	235	242	<b>985</b>
Detection rate	25.00%	12.77%	9.87%	8.53%	2.98%	4.55%	<b>9.64%</b>
Detection numbers	45	6	15	11	7	11	<b>95</b>

### Theft of a motor vehicle

Year to date	Central	Isle of Wight	North & East	Portsmouth	Southampton	Western	Force
Crimes	261	87	287	172	316	234	<b>1357</b>
MSG position	9 of 15	3 of 15	4 of 15	3 of 15	11 of 15	3 of 15	<b>1 of 8</b>
Detection rate	18.01%	32.18%	17.42%	14.53%	9.18%	17.95%	<b>16.29%</b>
MSG position	10 of 15	3 of 15	8 of 15	8 of 15	12 of 15	8 of 15	<b>4 of 8</b>
October 2010	Central	Isle of Wight	North & East	Portsmouth	Southampton	Western	Force
Crimes	38	11	48	14	51	37	<b>199</b>
Detection rate	18.42%	45.45%	16.67%	50.00%	7.84%	5.41%	<b>16.58%</b>
Detection numbers	7	5	8	7	4	2	<b>33</b>

### Theft from a motor vehicle

Year to date	Central	Isle of Wight	North & East	Portsmouth	Southampton	Western	Force
Crimes	1072	248	912	938	999	1181	<b>5350</b>
MSG position	10 of 15	2 of 15	6 of 15	14 of 15	9 of 15	13 of 15	<b>5 of 8</b>
Detection rate	12.03%	12.50%	7.68%	6.40%	3.80%	6.27%	<b>7.51%</b>
MSG position	9 of 15	7 of 15	10 of 15	10 of 15	13 of 15	13 of 15	<b>6 of 8</b>
October 2010	Central	Isle of Wight	North & East	Portsmouth	Southampton	Western	Force
Crimes	142	36	104	115	184	205	<b>786</b>
Detection rate	26.76%	2.78%	6.73%	3.48%	1.63%	4.39%	<b>7.89%</b>
Detection numbers	38	1	7	4	3	9	<b>62</b>

Robbery, dwelling burglary and vehicle crime are the component parts of serious acquisitive crime. These individual crime types do not have targets.

### Number of Organised Crime Groups (OCGs) disrupted

The Force target for 2010/11 is to dismantle or disrupt at least 40% of identified organised crime groups as a result of police or multi agency activity.

Force Target

#### YTD July 2010

	2009/2010	2010/2011
Number of OCGs identified and mapped		
Number of OCGs disrupted or partially disrupted through Crime OCU activity	data not supplied	

## Force target areas for catching criminals and managing offenders

Number of OCGs subject to tactical activity

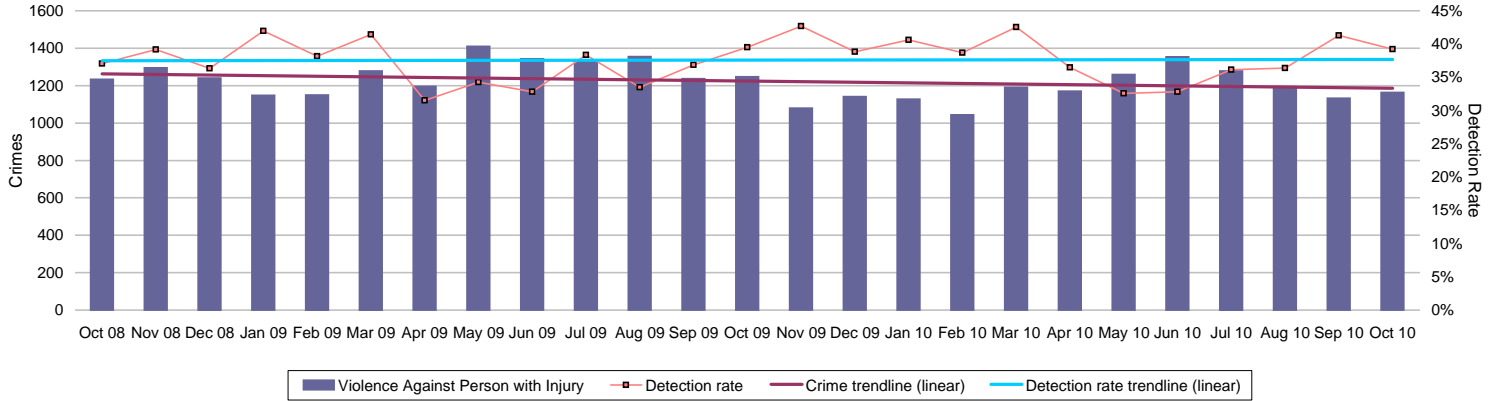
## Force target areas for protecting our communities

	Target	Actual	Central	Isle of Wight	North & East	Portsmouth	Southampton	Western
Reduction of VAP with injury	8403	8552	1759	789	1328	1552	1881	1243
	OCU specific targets		1707	574	1385	1501	1956	1280
Reduction in dwelling burglary	3131	2867	495	160	485	564	755	408
	OCU specific targets		615	150	659	576	595	536

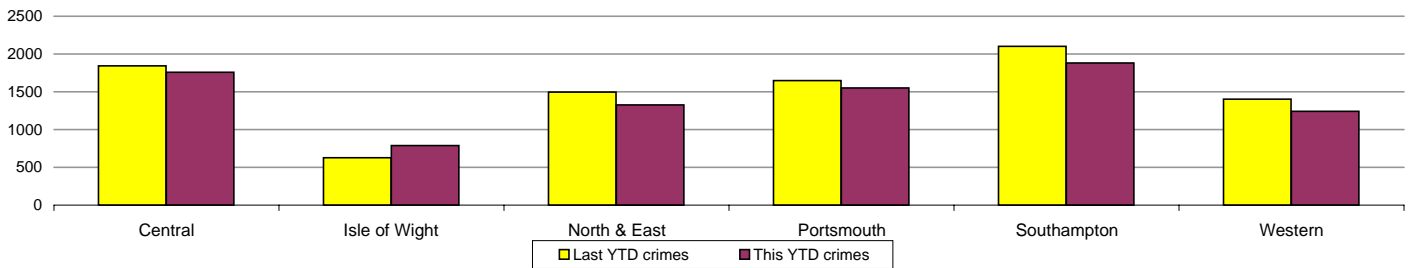
### Violence against the person (VAP) with injury

VAP with injury crimsec codes 1, 2, 4.1-4.4, 4.6-4.10, 5A, 5B, 5C, 8F, 8G, 8H, 8J, 8K and 37.1

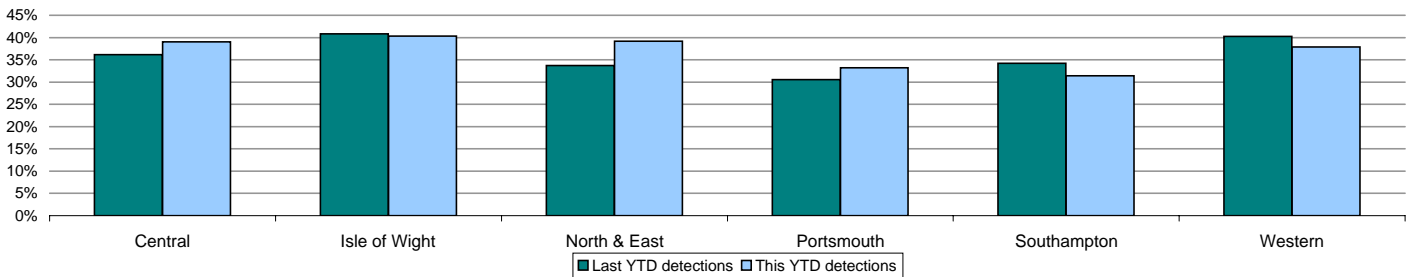
Force Target



Crimes	Central	Isle of Wight	North & East	Portsmouth	Southampton	Western	Force
<b>YTD Crimes</b>	1759	789	1328	1552	1881	1243	8552
YTD Target	1707	574	1385	1501	1956	1280	8403
YTD 09/10 Crimes	1844	629	1496	1649	2103	1404	9125
This month	237	107	161	213	281	164	1163
% change from 09/10	-4.61%	25.44%	-11.23%	-5.88%	-10.56%	-11.47%	-6.28%
MSG position	14 of 15	14 of 15	8 of 15	14 of 15	14 of 15	9 of 15	7 of 8
MSG actual	1.748	2.533	1.209	3.210	3.332	1.336	1.947
MSG average	1.309	1.761	1.218	2.159	2.38	1.268	1.526



Detections	Central	Isle of Wight	North & East	Portsmouth	Southampton	Western	Force
<b>YTD Detection Rate</b>	39.06%	40.30%	39.16%	33.18%	31.42%	37.89%	36.27%
This month	39.66%	54.21%	52.17%	32.86%	30.96%	38.41%	39.21%
YTD 09/10 Detections	36.17%	40.86%	33.69%	30.56%	34.19%	40.24%	35.24%
MSG position	13 of 15	9 of 15	11 of 15	10 of 15	12 of 15	9 of 15	6 of 8
MSG actual	38.12%	41.81%	39.30%	36.58%	34.66%	34.66%	37.94%
MSG average	41.04%	43.58%	42.45%	38.04%	39.28%	39.28%	41.49%

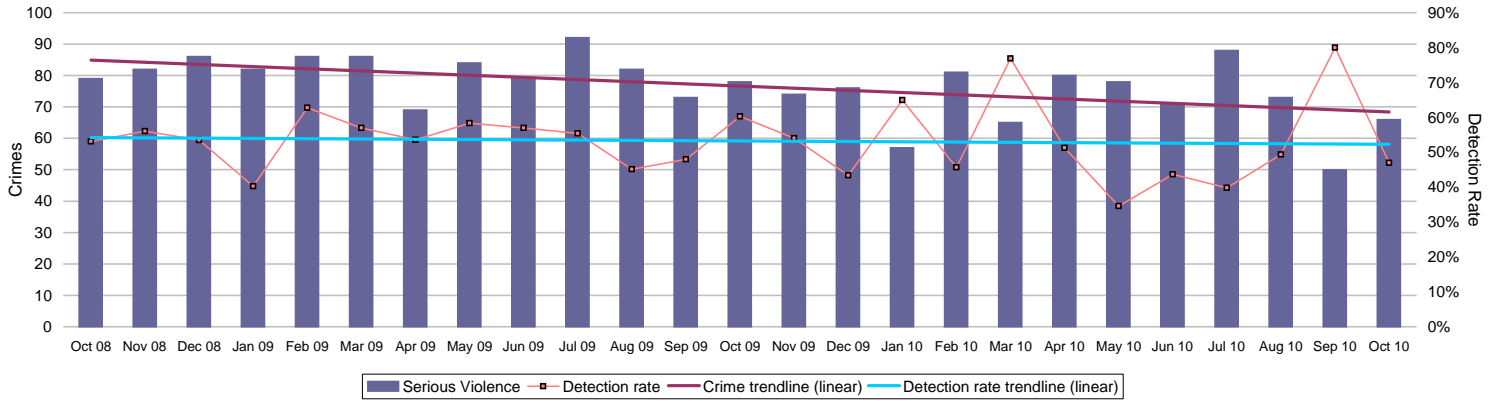


# Force target areas for protecting our communities

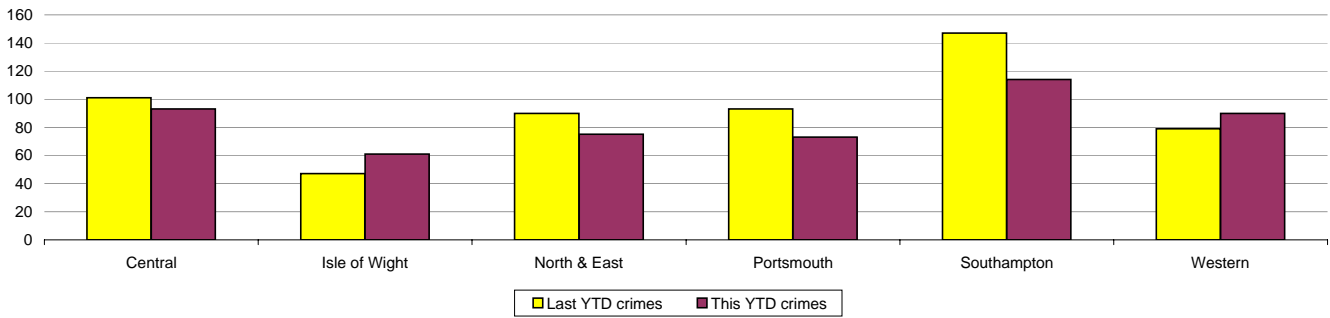
## Serious violent crime

APACS 5.1

Serious violent crime consists of crimsec codes 1, 2, 4.1-4.4, 4.6, 4.8, 5A, 5B, 5C, 8F, 8H and 37.1

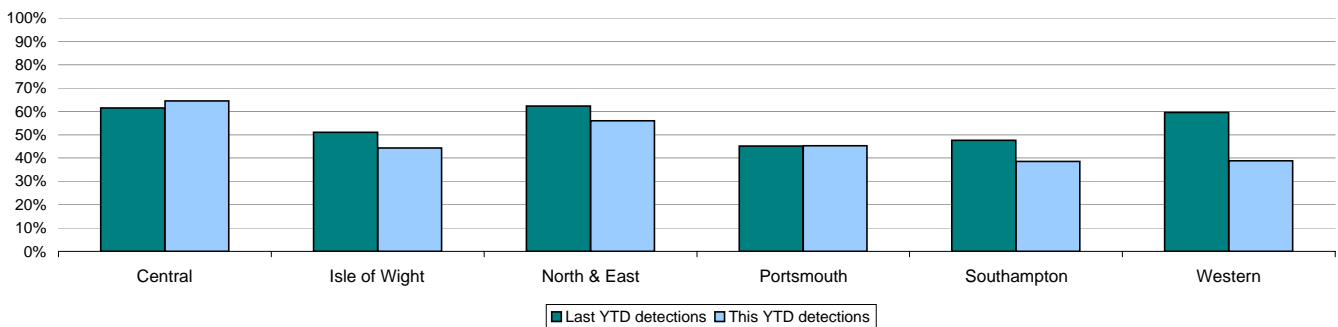


Crimes	Central	Isle of Wight	North & East	Portsmouth	Southampton	Western	Force
<b>YTD Crimes</b>	93	61	75	73	114	90	<b>506</b>
<b>YTD 09/10 Crimes</b>	101	47	90	93	147	79	<b>557</b>
This month	7	12	4	13	18	12	<b>66</b>
% change from 09/10	-7.92%	29.79%	-16.67%	-21.51%	-22.45%	13.92%	<b>-9.16%</b>
MSG position	12 of 15	<b>15 of 15</b>	10 of 15	2 of 15	7 of 15	11 of 15	<b>6 of 8</b>
MSG actual	0.098	0.214	0.074	0.125	0.192	0.09	<b>0.114</b>
MSG average	0.087	0.142	0.072	0.215	0.227	0.077	<b>0.111</b>



Detections	Central	Isle of Wight	North & East	Portsmouth	Southampton	Western	Force
<b>YTD Detection Rate</b>	64.52%	44.26%	56.00%	45.21%	38.60%	38.89%	<b>47.63%</b>
This month	128.57%	41.67%	50.00%	30.77%	38.89%	33.33%	<b>46.97%</b>
<b>YTD 09/10 Detections</b>	61.39%	51.06%	62.22%	45.16%	47.62%	59.49%	<b>54.04%</b>
MSG position	5 of 15	<b>13 of 15</b>	10 of 15	9 of 15	5 of 15	<b>14 of 15</b>	<b>6 of 8</b>
MSG actual	59.38%	44.30%	53.85%	46.85%	50.27%	49.32%	<b>51.32%</b>
MSG average	59.17%	53.34%	58.02%	46.67%	48.67%	61.51%	<b>49.05%</b>

Note: Detections refer to Sanction Detections ONLY

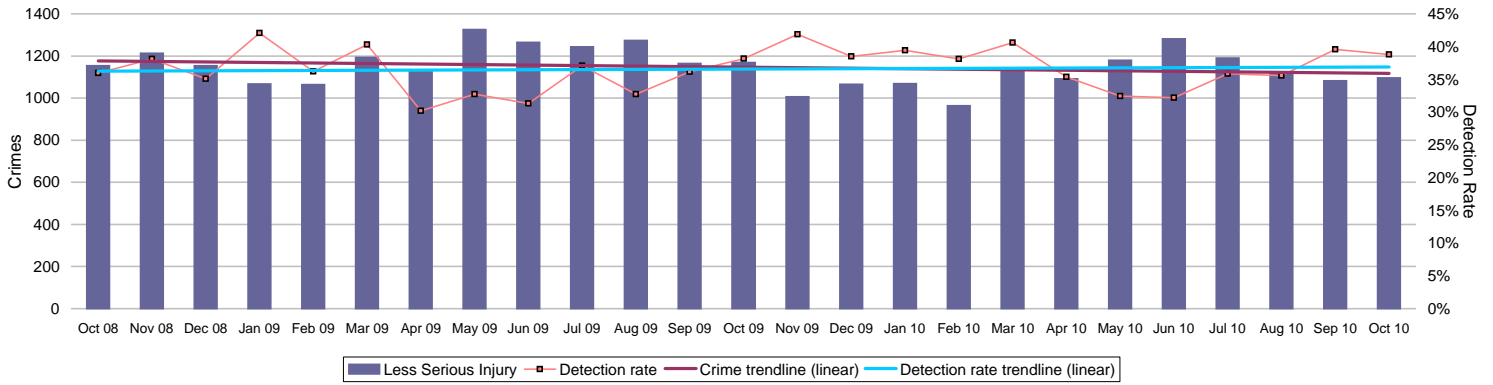


# Force target areas for protecting our communities

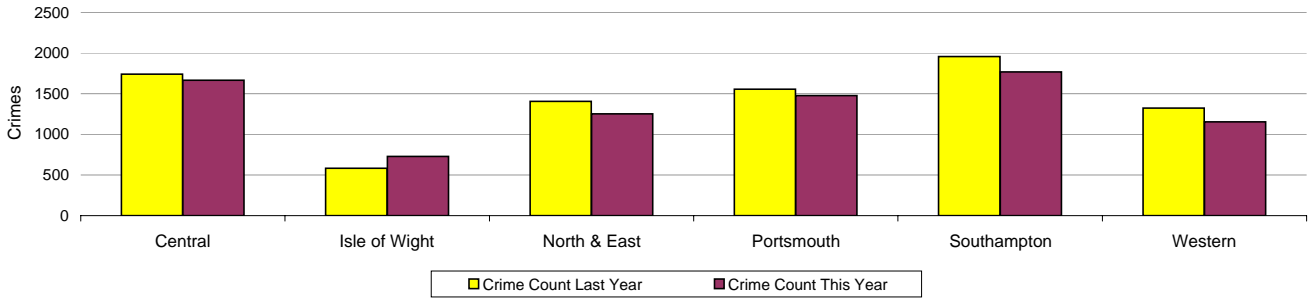
## Assault with less serious injury

APACS 5.3

Assault with less serious injury consists of crimsec codes 8G and 8J

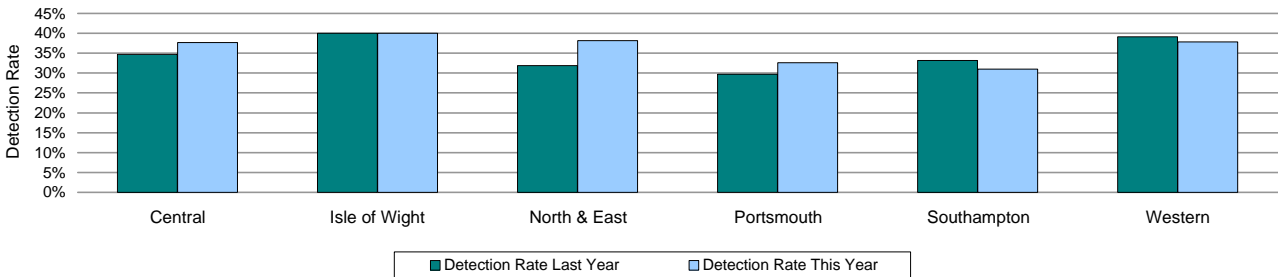


Crimes	Central	Isle of Wight	North & East	Portsmouth	Southampton	Western	Force
<b>YTD Crimes</b>	1664	728	1253	1478	1767	1153	<b>8043</b>
<b>YTD 09/10 Crimes</b>	1742	582	1406	1556	1955	1324	<b>8565</b>
This month	230	95	157	199	263	152	<b>1096</b>
% change from 09/10	-4.48%	25.09%	-10.88%	-5.01%	-9.62%	-12.92%	<b>-6.09%</b>
MSG position	<b>14 of 15</b>	<b>14 of 15</b>	<b>7 of 15</b>	<b>14 of 15</b>	<b>14 of 15</b>	<b>9 of 15</b>	<b>8 of 8</b>
MSG actual	1.648	2.319	1.135	3.08	3.139	1.246	<b>1.832</b>
MSG average	1.222	1.619	1.146	1.943	2.153	1.191	<b>1.415</b>



Detections	Central	Isle of Wight	North & East	Portsmouth	Southampton	Western	Force
<b>YTD Detection Rate</b>	37.68%	39.97%	38.15%	32.61%	30.96%	37.81%	<b>35.57%</b>
This month	36.96%	55.79%	52.23%	33.17%	30.42%	38.82%	<b>38.78%</b>
<b>YTD 09/10 Detections</b>	34.73%	40.03%	31.86%	29.69%	33.20%	39.12%	<b>34.03%</b>
MSG position	<b>13 of 15</b>	<b>9 of 15</b>	<b>11 of 15</b>	<b>10 of 15</b>	<b>11 of 15</b>	<b>9 of 15</b>	<b>6 of 8</b>
MSG actual	36.93%	41.62%	38.21%	36.03%	33.70%	40.32%	<b>37.08%</b>
MSG average	39.92%	42.81%	41.52%	37.07%	38.28%	40.04%	<b>41.00%</b>

Note: Detections refer to Sanction Detections ONLY

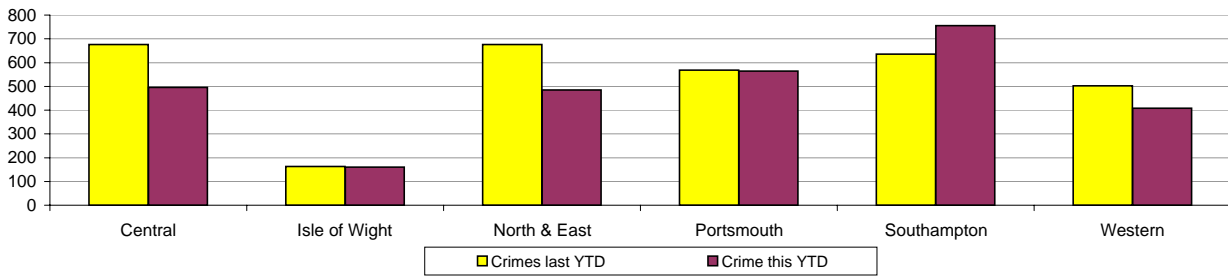


# Force target areas for protecting our communities

## Reduction in Dwelling Burglary

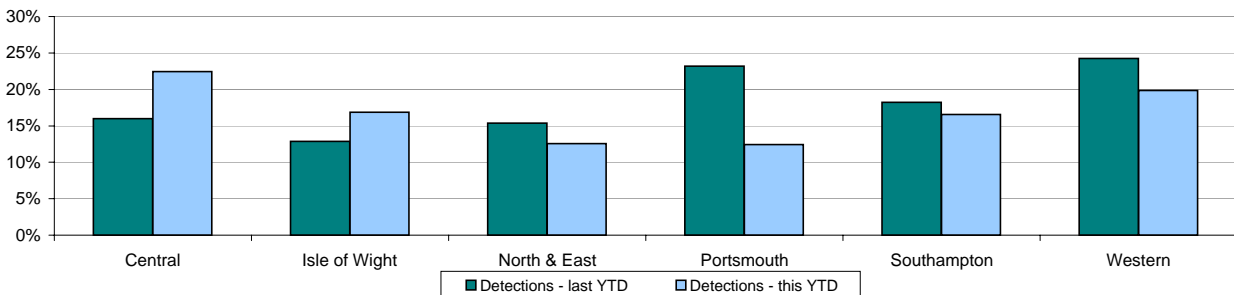


Crimes	Central	Isle of Wight	North & East	Portsmouth	Southampton	Western	Force
<b>YTD Crimes</b>	495	160	485	564	<b>755</b>	408	<b>2867</b>
YTD Target	615	150	659	576	595	536	<b>3131</b>
<b>YTD 09/10 Crimes</b>	676	163	676	569	636	503	<b>3223</b>
This month	58	15	70	78	130	60	<b>411</b>
% change from 09/10	-26.78%	-1.84%	-28.25%	-0.88%	18.71%	-18.89%	<b>-11.05%</b>
MSG position	<b>5 of 15</b>	<b>5 of 15</b>	2 of 15	2 of 15	<b>7 of 15</b>	1 of 15	<b>2 of 8</b>
MSG actual	1.137	1.312	1.114	3.732	3.281	0.972	<b>1.512</b>
MSG average	1.687	1.672	1.679	2.309	3.45	1.547	<b>2.176</b>



Detections	Central	Isle of Wight	North & East	Portsmouth	Southampton	Western	Force
<b>YTD Detection Rate</b>	22.42%	16.88%	12.58%	12.41%	16.56%	19.85%	<b>16.57%</b>
This month	53.45%	6.67%	12.86%	6.41%	12.31%	10.00%	<b>16.55%</b>
<b>YTD 09/10 Detections</b>	15.98%	12.88%	15.38%	23.20%	18.24%	24.25%	<b>18.71%</b>
MSG position	11 of 15	10 of 15	<b>14 of 15</b>	9 of 15	9 of 15	4 of 15	<b>5 of 8</b>
MSG actual	13.55%	17.72%	10.16%	14.32%	16.25%	18.90%	<b>14.50%</b>
MSG average	16.88%	18.86%	17.58%	13.48%	17.62%	16.73%	<b>16.36%</b>

Note: Detections refer to Sanction Detections ONLY



## Force target areas for making the most of our resources

## Force target areas for equipping our staff to deliver

	Target	Actual	Central	Isle of Wight	North & East	Portsmouth	Southampton	Western
<b>BME recruitment</b>	5% of all recruits	5.5%	This is a Force measure					

	Target	Actual	Central	Isle of Wight	North & East	Portsmouth	Southampton	Western
<b>Staff confidence in the organisation</b>	61%		To be agreed					

### Minority ethnic recruitment

Force Target

The 2010/11 target is based on all police staff and police officer recruits. Data published previously has related only to police officer recruitment.

Target = 5%	All recruits	Minority ethnic recruits	Percentage
YTD October 2010	199	11	5.5%

### Minority ethnic police officer recruitment

APACS 3.1

	All recruits	Minority ethnic recruits	Percentage
YTD October 2010	59	6	10.2%

### Minority ethnic police staff recruitment (incl PCSOs)

	All recruits	Minority ethnic recruits	Percentage
YTD October 2010	140	5	3.6%

### Female officer representation

APACS 3.2

	Male strength	Female strength	Percentage
YTD October 2010	2606.5	1027.2	28.27%

### Staff confidence in the organisation

Force Target

This is a new target area for 2010/11 based up on the results of the staff survey. The initial staff survey was undertaken in May 2010. This survey provided a baseline figure on which a target could be established. The agreed target questions is: "Taking everything into consideration I am satisfied with my job". The results of the May survey showed 59% of those who responded to the survey agreed or strongly agreed with this statement. It was therefore agreed that a suitable target for 2010/11 is to achieve at least 61% the next time the survey is undertaken. It is currently proposed that the next survey is undertaken in May 2011.

## Monitoring information for Catching criminals and managing offenders

### Serious sexual offences - detections

<b>October 2010</b>	Central	Isle of Wight	North & East	Portsmouth	Southampton	Western	<b>Force</b>
Number of Crimes	213	69	140	132	193	173	<b>920</b>
Number of Detections	48	19	52	25	55	39	<b>238</b>
Detection Rate	22.54%	27.54%	37.14%	18.94%	28.50%	22.54%	<b>25.87%</b>
Number of No Crimes	24	5	17	7	16	9	<b>78</b>

<b>October 2009</b>	Central	Isle of Wight	North & East	Portsmouth	Southampton	Western	<b>Force</b>
Number of Crimes	160	64	187	131	154	121	<b>817</b>
Number of Detections	35	18	52	17	55	37	<b>214</b>
Detection Rate	21.88%	28.13%	27.81%	12.98%	35.71%	30.58%	<b>26.19%</b>
Number of No Crimes	13	4	9	9	23	9	<b>67</b>

### Class A drugs sanction detections

	Central	Isle of Wight	North & East	Portsmouth	Southampton	Western	<b>Force</b>
YTD October 2010	13	14	45	20	15	65	<b>172</b>
October 2010	0	1	1	3	2	0	<b>7</b>
YTD October 2009	15	11	32	28	54	68	<b>208</b>
October 2009	1	3	3	6	16	2	<b>31</b>

## Monitoring information for Catching criminals and managing offenders

### Arrest and disposal information by OCU

Sep-10	Central	Isle of Wight	North & East	Portsmouth	Southampton	Western	Force
Charge	377	166	386	330	404	305	<b>1968</b>
Caution	101	27	85	97	84	78	<b>472</b>
Conditional Caution	1	12	2	2	2	8	<b>27</b>
Reprimand/warning	35	8	31	12	11	40	<b>137</b>
TIC	38	8	19	14	21	14	<b>114</b>
Street warning	14	69	20	31	27	12	<b>173</b>
PND	39	10	36	47	36	31	<b>199</b>

Number of arrests	<b>1340</b>	<b>573</b>	<b>1127</b>	<b>967</b>	<b>1117</b>	<b>1018</b>	<b>6142</b>
-------------------	-------------	------------	-------------	------------	-------------	-------------	-------------

Note: This data is supplied one month in arrears

### Percentage bailed on first submission

Oct-10	Central	Isle of Wight	North & East	Portsmouth	Southampton	Western	Force
People Arrested	978	422	725	739	847	674	<b>4385</b>
People Bailed	345	176	234	184	282	273	<b>1494</b>
Bailed on First	35.3%	41.7%	32.3%	24.9%	33.3%	40.5%	<b>34.1%</b>

### Forensic results for Vehicle Crime

#### DNA - Theft of a motor vehicle

	Central	Isle of Wight	North & East	Portsmouth	Southampton	Western
Sep YTD 2010/11	1	2	3	2	0	1
Sep YTD 2009/10	1	0	0	0	4	1
Difference	0	2	3	2	-4	0

#### Fingerprint Detections - Theft of a motor vehicle

	Central	Isle of Wight	North & East	Portsmouth	Southampton	Western
Sep YTD 2010/11	1	2	6	5	3	5
Sep YTD 2009/10	16	10	7	13	5	1
Difference	-15	-8	-1	-8	-2	4

#### DNA - Theft from a motor vehicle

	Central	Isle of Wight	North & East	Portsmouth	Southampton	Western
Sep YTD 2010/11	5	2	4	0	2	2
Sep YTD 2009/10	0	0	3	5	2	5
Difference	5	2	1	-5	0	-3

#### Fingerprint Detections - Theft from a motor vehicle

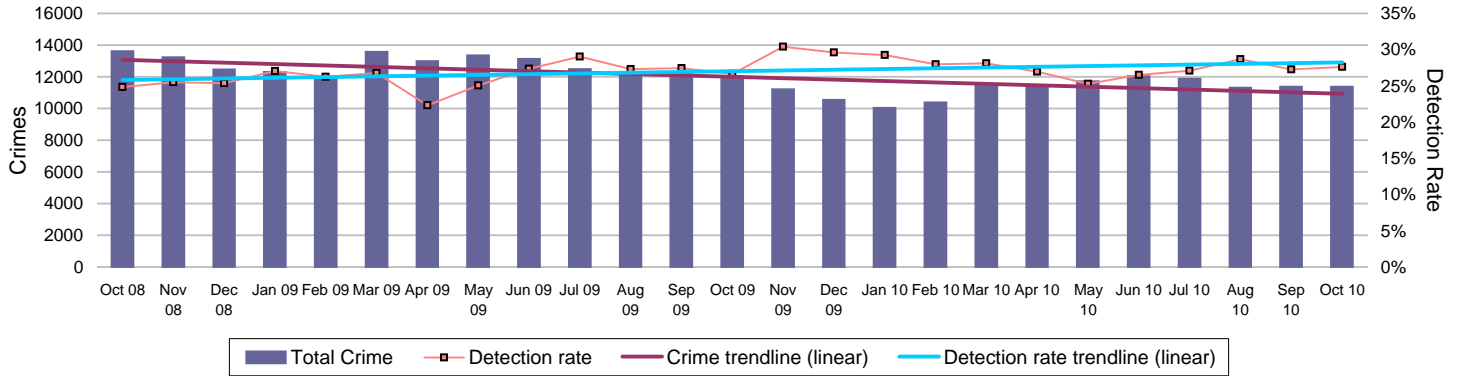
	Central	Isle of Wight	North & East	Portsmouth	Southampton	Western
Sep YTD 2010/11	7	5	7	13	5	4
Sep YTD 2009/10	11	4	5	14	6	6
Difference	-4	1	2	-1	-1	-2

### Outstanding suspects - suspects that are shown on RMS for offences up to and including 03/08/2010

	Central	Isle of Wight	North & East	Portsmouth	Southampton	Western	Force
Crime count	83	20	109	84	125	118	<b>539</b>
Total suspects	93	20	126	108	139	144	<b>630</b>

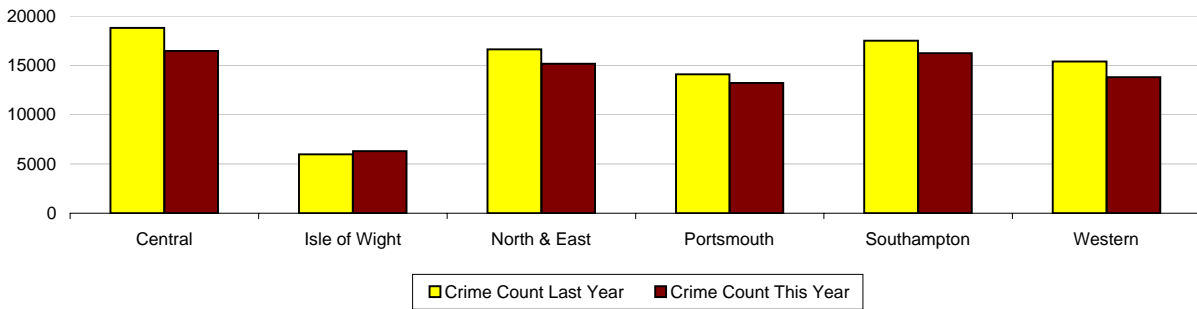
# Monitoring information for Protecting our communities

## All crime



### Crimes

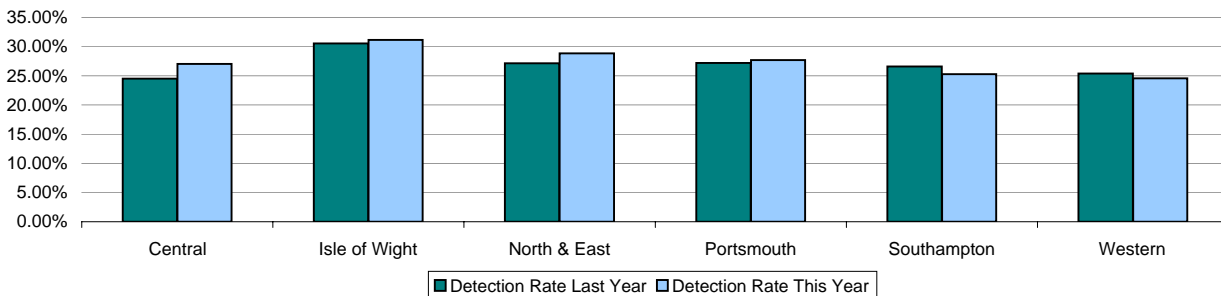
	Central	Isle of Wight	North & East	Portsmouth	Southampton	Western	Force
<b>YTD Crimes</b>	16469	6283	15148	13201	16239	13783	<b>81123</b>
<b>YTD 09/10 Crimes</b>	18784	5988	16627	14093	17509	15375	<b>88376</b>
This month	2270	791	1986	1770	2547	2013	<b>11377</b>
% change from 09/10	-12.32%	4.93%	-8.90%	-6.33%	-7.25%	-10.35%	<b>-8.21%</b>
MSG position	12 of 15	<b>14 of 15</b>	9 of 15	<b>13 of 15</b>	<b>13 of 15</b>	8 of 15	<b>6 of 8</b>
OCU actual	15.952	20.163	14.893	27.685	28.845	14.262	<b>18.534</b>
MSG average	14.891	16.387	14.644	22.498	24.142	14.536	<b>17.512</b>



### Detections

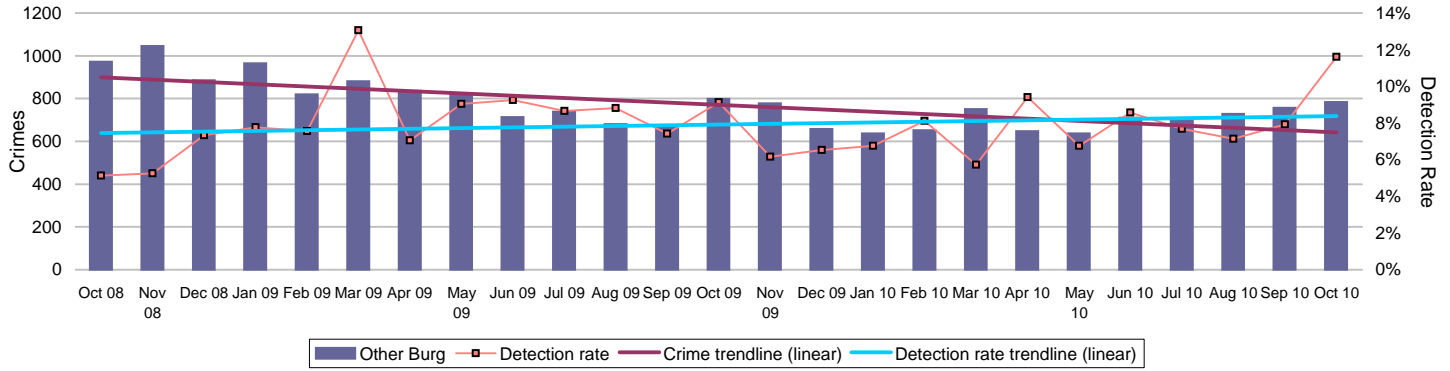
	Central	Isle of Wight	North & East	Portsmouth	Southampton	Western	Total
<b>YTD Detection Rate</b>	27.04%	31.16%	28.88%	27.69%	25.31%	24.60%	<b>27.05%</b>
This month	32.47%	36.92%	29.91%	28.31%	22.89%	21.51%	<b>27.60%</b>
<b>YTD 09/10 Detections</b>	24.53%	30.56%	27.17%	27.22%	26.59%	25.37%	<b>26.42%</b>
MSG position	10 of 15	3 of 15	<b>7 of 15</b>	2 of 15	9 of 15	10 of 15	<b>6 of 8</b>
OCU actual	25.63%	33.63%	28.60%	29.71%	26.62%	25.60%	<b>27.60%</b>
MSG average	27.36%	29.66%	28.02%	26.69%	27.82%	27.00%	<b>28.40%</b>

Note: Detections refer to Sanction Detections ONLY

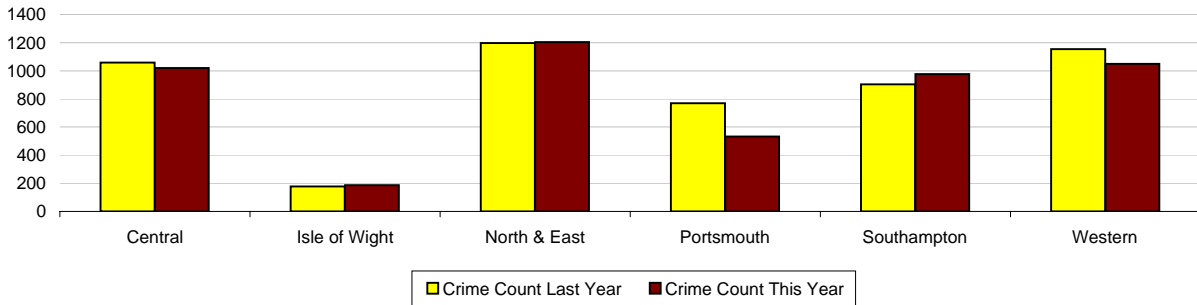


# Monitoring information for Protecting our communities

## Non-Dwelling Burglary

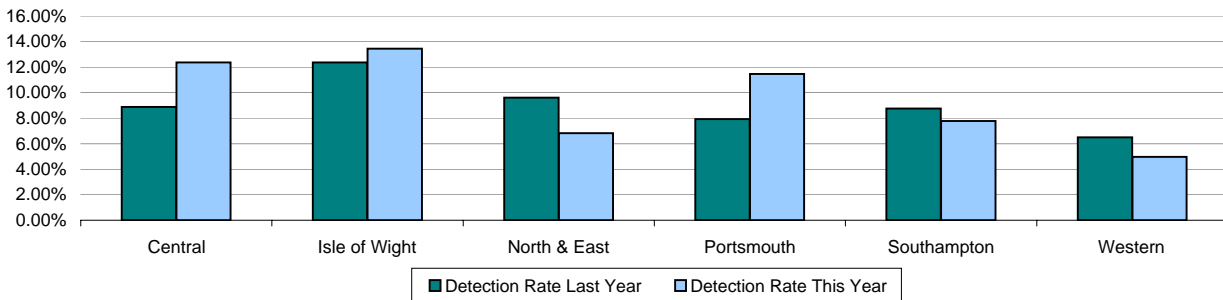


Crimes	Central	Isle of Wight	North & East	Portsmouth	Southampton	Western	Force
<b>YTD Crimes</b>	1020	186	1204	532	977	1049	<b>4968</b>
<b>YTD 09/10 Crimes</b>	1059	178	1197	770	903	1154	<b>5261</b>
This month	154	21	206	55	164	184	<b>784</b>
% change from 09/10	-3.68%	4.49%	0.58%	-30.91%	8.19%	-9.10%	<b>-5.57%</b>
MSG position	6 of 15	1 of 15	<b>14 of 15</b>	7 of 15	<b>14 of 15</b>	8 of 15	<b>5 of 8</b>
OCU actual	1.016	0.685	1.158	1.229	1.896	1.124	<b>1.182</b>
MSG average	1.102	1.160	1.022	1.346	1.474	1.140	<b>1.086</b>



Detections	Central	Isle of Wight	North & East	Portsmouth	Southampton	Western	Total
<b>YTD Detection Rate</b>	12.35%	13.44%	6.81%	11.47%	7.78%	4.96%	<b>8.49%</b>
This month	22.73%	14.29%	3.88%	21.82%	8.54%	10.33%	<b>11.61%</b>
<b>YTD 09/10 Detections</b>	8.88%	12.36%	9.61%	7.92%	8.75%	6.50%	<b>8.48%</b>
MSG position	4 of 15	3 of 15	9 of 15	5 of 15	<b>15 of 15</b>	<b>15 of 15</b>	<b>5 of 8</b>
OCU actual	9.22%	15.13%	6.96%	9.83%	7.16%	4.28%	<b>7.47%</b>
MSG average	7.53%	10.47%	7.71%	9.67%	10.98%	7.28%	<b>8.71%</b>

Note: Detections refer to Sanction Detections ONLY



## Monitoring information for Protecting our communities

### Number of convictions recorded against identified, prolific and other priority offenders (PPOs)

	April 2010	May 2010	June 2010	July 2010	Aug 2010	Sep 2010	Force YTD
Persistent Young Offenders	4	7	7	4	1	13	<b>36</b>
Priority Prolific Offenders	18	19	19	18	24	23	<b>121</b>
Persistent Priority Prolific Young Off's	2	1	0	1	0	2	<b>6</b>
Young Offenders	197	187	203	249	173	186	<b>1195</b>

### FIU1 submissions

	Central	Isle of Wight	North & East	Portsmouth	Southampton	Western	Force
YTD October 2010	72	82	130	82	104	76	<b>546</b>
Number of eligible detections	2128	986	2171	2058	1897	1569	<b>10809</b>
% submission rate	3%	8%	6%	4%	5%	5%	<b>5%</b>

	Central	Isle of Wight	North & East	Portsmouth	Southampton	Western	Force
YTD October 2009	137	141	154	107	149	112	<b>800</b>
Number of eligible detections	2217	1014	2259	2138	2226	1838	<b>11692</b>
% submission rate	6%	14%	7%	5%	7%	6%	<b>7%</b>

	Central	Isle of Wight	North & East	Portsmouth	Southampton	Western	Force
October 2010	3	3	7	11	10	2	<b>36</b>
Number of eligible detections	435	147	284	290	262	209	<b>1627</b>
% submission rate	1%	2%	2%	4%	4%	1%	<b>2%</b>

	Central	Isle of Wight	North & East	Portsmouth	Southampton	Western	Force
October 2009	15	18	26	11	16	18	<b>104</b>
Number of eligible detections	275	113	326	306	263	237	<b>1520</b>
% submission rate	5%	16%	8%	4%	6%	8%	<b>7%</b>

Eligible crimes are those covered by Proceeds of Crime Act (POCA)

### MAPPA visits

**Number of timely RSO visits** **target 90%**

% of RSO visits conducted within the minimum visit guidelines (plus 2 weeks)

	Central	Isle of Wight	North & East	Portsmouth	Southampton	Western
Jul-Sept	96%	94%	96%	96%	100%	90%

**Timeliness of level 1 reviews** **target 90%**

% of level 1 cases reviewed within timescales (plus 2 weeks)

	Central	Isle of Wight	North & East	Portsmouth	Southampton	Western
Jul-Sept	62%	100%	100%	95%	100%	79%

### Actual Cash Seizure Value (Forfeited) by month

	Central	Isle of Wight	North & East	Portsmouth	Southampton	Western	Crime OCU	Operations	Force
July 2010	£3,298.52	£0.00	£4,660.00	£0.00	£0.00	£4,241.30	£24,910.00	£0.00	<b>£37,109.82</b>
August 2010	£5,096.16	£0.00	£0.00	£1,700.00	£1,300.00	£0.00	£0.00	£0.00	<b>£8,096.16</b>
September 2010	£2,000.00	£1,035.00	£5,632.39	£0.00	£17,900.00	£1.00	£0.00	£0.00	<b>£26,568.39</b>
October 2010	£0.00	£3,920.00	£0.00	£3,801.67	£0.00	£0.00	£0.00	£2,500.00	<b>£10,221.67</b>

## Monitoring information for Protecting our communities

### Gun crime rate

	Central	Isle of Wight	North & East	Portsmouth	Southampton	Western	Force	MSG position up to June 2010
YTD Sept 2010	15	4	15	6	15	7	<b>62</b>	<b>4</b>
YTD Sept 2009	25	3	8	10	10	3	<b>59</b>	
% change from 09/10	-40.0%	33.3%	87.5%	-40.0%	50.0%	133.3%	<b>5.1%</b>	

Apacs 5.5

Gun crime figures published reflect the APACS technical definition which includes "where the victim is convinced of the presence of a firearm, even if it is concealed and there is evidence of the suspect's intention to create this impression".

### Knife crime rate

	Central	Isle of Wight	North & East	Portsmouth	Southampton	Western	Force	MSG position up to March 2010
YTD Sept 2010	41	18	41	42	67	24	<b>233</b>	<b>3</b>
YTD Sept 2009	54	13	71	57	104	38	<b>337</b>	
% change from 09/10	-24.1%	38.5%	-42.3%	-26.3%	-35.6%	-36.8%	<b>-30.9%</b>	

Apacs 5.6

**Knife** = knife or other sharp instrument (including broken glass/bottles) piercing the skin or, for threats and attempts, instruments normally capable of piercing the skin. The measure for counting broken glass/bottles has changed for 09-10 with less occurrences being counted by the Home Office. Knife crime figures published reflect the APACS technical definition which includes "where the victim is convinced of the presence of a knife, even if it is concealed and there is evidence of the suspect's intention to create this impression".

### Murder offences

	Central	Isle of Wight	North & East	Portsmouth	Southampton	Western	Force
YTD Oct 2010	0	1	1	1	2	4	<b>9</b>
YTD Domestic Murders 2010/11	0	1	0	0	1	1	<b>3</b>
YTD Oct 2009	4	2	1	1	1	2	<b>11</b>
YTD Domestic Murders 2009/10	1	0	0	0	0	0	<b>1</b>

Apacs 5.4

Note: The definition of Domestic Murder used above is now in line with the 2009/10 APACS Guidance (in previous months, the government and ACPO definition was used - this is located on pg 21 of the profile). In APACS a domestic homicide is where the relationship between victim and suspect was either: Spouse, Common law spouse or cohabiting partner, Boyfriend/Girlfriend, Ex-boyfriend/girlfriend or Adulterous relationship.

### Domestic Crimes and Incidents

YTD October 2010	Central	Isle of Wight	North & East	Portsmouth	Southampton	Western	Force
Domestic Crimes	1253	433	787	894	1061	805	<b>5233</b>
Domestic Detection Rate	39.3%	39.5%	48.2%	38.5%	36.0%	36.5%	<b>39.4%</b>
Domestic Crimes Arrests	1037	374	654	746	846	629	<b>4286</b>
Domestic Crime Arrest Rate	82.8%	86.4%	83.1%	83.4%	79.7%	78.1%	<b>81.9%</b>

YTD October 2010	Central	Isle of Wight	North & East	Portsmouth	Southampton	Western	Force
Domestic Crimes	1253	433	787	894	1061	805	<b>5233</b>
Repeat Domestic	293	98	166	257	308	179	<b>1301</b>
% Repeat	23.38%	22.63%	21.09%	28.75%	29.03%	22.24%	<b>24.86%</b>

Domestic Incidents	3024	1241	2252	2591	3096	1997	<b>14201</b>
Repeat Domestic	1218	571	698	1406	1583	675	<b>6151</b>
% Repeat	40.28%	46.01%	30.99%	54.26%	51.13%	33.80%	<b>43.31%</b>

### Hate Crimes and Incidents

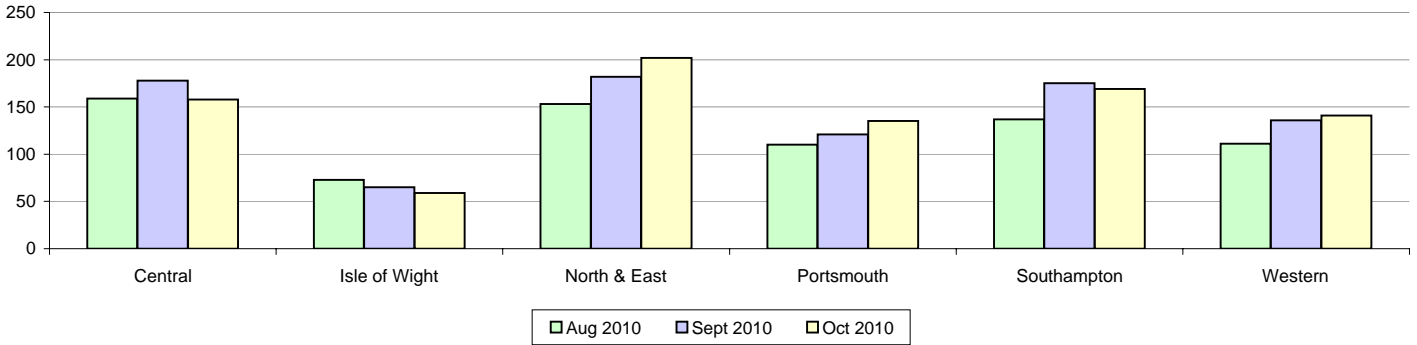
YTD October 2010	Central	Isle of Wight	North & East	Portsmouth	Southampton	Western	Force
Incidents	197	39	165	302	390	125	<b>1218</b>
Crimes	137	31	123	162	239	92	<b>784</b>
Detections	72	13	51	67	96	21	<b>320</b>
Detection Rate	52.55%	41.94%	41.46%	41.36%	40.17%	22.83%	<b>40.82%</b>

# Monitoring information for Protecting our communities

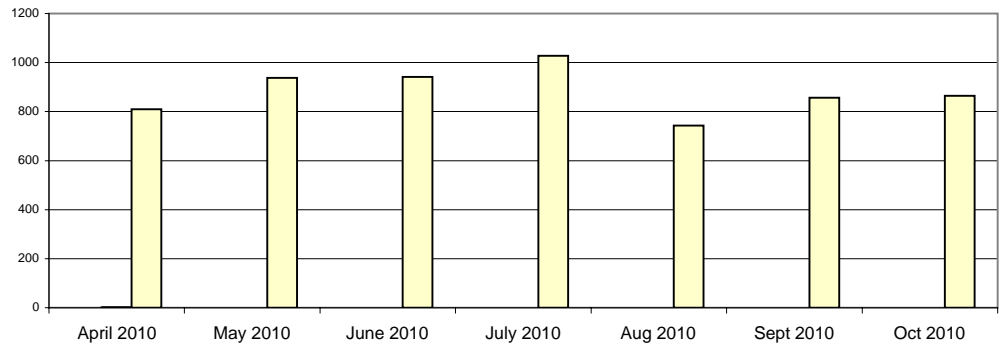
## Missing Persons

### Breakdown by OCU

	Central	Isle of Wight	North & East	Portsmouth	Southampton	Western	Force
Aug 2010	159	73	153	110	137	111	<b>743</b>
Sept 2010	178	65	182	121	175	136	<b>857</b>
Oct 2010	158	59	202	135	169	141	<b>864</b>



	Force
April 2010	<b>809</b>
May 2010	<b>937</b>
June 2010	<b>941</b>
July 2010	<b>1028</b>
Aug 2010	<b>743</b>
Sept 2010	<b>857</b>
Oct 2010	<b>864</b>



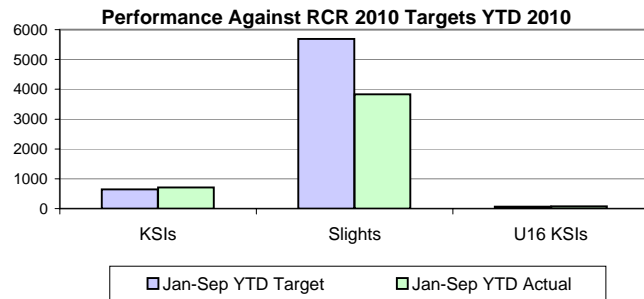
# Monitoring information for Protecting our communities

## Casualty reduction

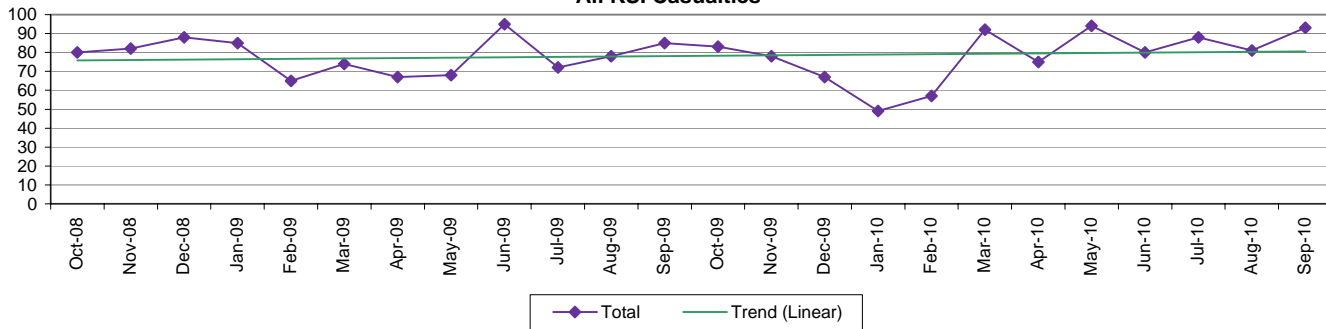
	Central	Isle of Wight	North & East	Portsmouth	Southampton	Western	Force
YTD Sept 2010	157	61	166	77	86	162	<b>709</b>
YTD Sept 2009	176	55	141	73	69	175	<b>689</b>
% change from 2009	-10.80%	10.91%	17.73%	5.48%	24.64%	-7.43%	<b>2.90%</b>
Sept 2010	16	8	19	12	18	20	<b>93</b>
Sept 2009	17	5	23	11	6	23	<b>85</b>
% change from 2009	-5.88%	60.00%	-17.39%	9.09%	200.00%	-13.04%	<b>9.41%</b>

### Performance Against RCR 2010 Targets

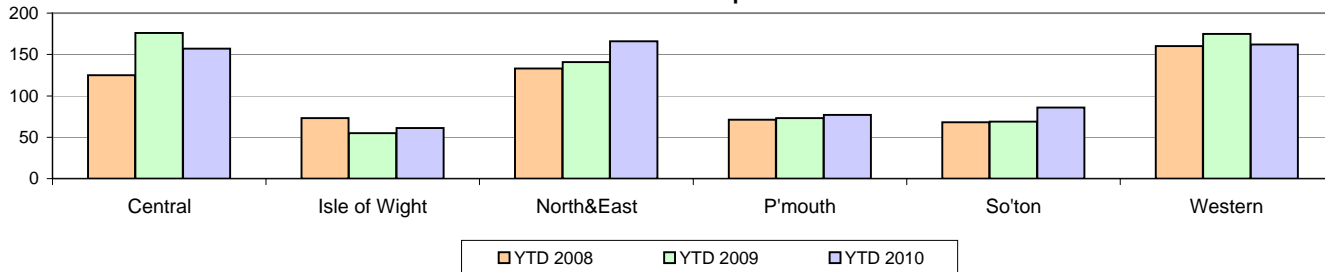
Sep-10	KSIs	Slight	U16 KSIs
Year Target	862	7584	86
Monthly Target	71.8	632.0	7.2
Jan-Sep YTD Target	646.5	5688.0	64.5
June Actual	93	467	8
Jan-Sep YTD Actual	709	3830	73
YTD Actual against Target	<b>9.7%</b>	<b>-32.7%</b>	<b>13.2%</b>



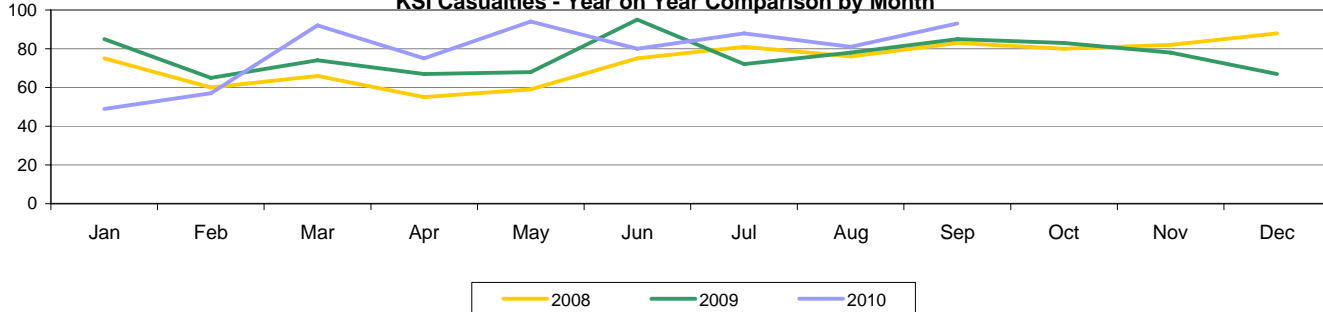
### All KSI Casualties



### All KSIs - YTD Comparison



### KSI Casualties - Year on Year Comparison by Month



## Perception of drug use

	Jun-10
Hampshire	<b>24.0%</b>
MSG Position	<b>3 of 8</b>
MSG average	23.7%

This data is based on 'The percentage who perceive that people using or dealing drugs are a problem in their local area'

## Exception report for making the most of resources and equipment

### Special Constable Balanced Scorecard (August data)

	Central	Isle of Wight	North & East	Portsmouth	Southampton	Western	RPU	CS/CQ	Force	Average
Total number of officers	90	18	87	74	64	76	8	2	<b>419</b>	n/a
Total number of operational hours	1291	479	1407	612	613	789	88	24	<b>5303</b>	n/a
Number of operational hours per 1000 population	3.1	3.5	3.2	3.2	3.2	2.2	N/A	N/A	<b>2.7</b>	3
Average number of operational hours per officer	14.3	26.6	16.2	8.3	9.6	10.4	11.0	7.8	<b>12.7</b>	13
Leavers joining regular service or transferring to another Force	0	0	0	0	1	0	0	0	<b>1</b>	0
Leavers not joining regular service or transferring to another Force	2	0	0	0	2	0	0	0	<b>4</b>	1
Number of officers completing at least 16 hours of duty during the month	41	8	42	26	44	30	2	3	<b>196</b>	n/a

Gender	Central	Isle of Wight	North & East	Portsmouth	Southampton	Western	RPU	CS/CQ	Force
Male	58	14	68	49	45	56	8	2	<b>300</b>
Female	32	4	19	25	19	20	0	1	<b>120</b>

Ethnicity	Central	Isle of Wight	North & East	Portsmouth	Southampton	Western	RPU	CS/CQ	Force
White	89	18	84	73	61	76	8	3	<b>412</b>
Mixed	1	0	0	0	0	0	0	0	<b>1</b>
Black or black British	0	0	2	0	2	0	0	0	<b>4</b>
Asian or asian British	0	0	1	1	0	0	0	0	<b>2</b>
Chinese or other	0	0	0	0	1	0	0	0	<b>1</b>
Not stated	0	0	0	0	0	0	0	0	<b>0</b>

Age	Central	Isle of Wight	North & East	Portsmouth	Southampton	Western	RPU	CS/CQ	Force
25 and under	38	4	27	44	32	36	0	0	<b>181</b>
26 to 40	31	6	33	21	38	23	3	1	<b>156</b>
41 to 55	17	5	12	8	4	15	4	1	<b>66</b>
Over 55	4	3	4	1	1	2	1	1	<b>17</b>

Length of service	Central	Isle of Wight	North & East	Portsmouth	Southampton	Western	RPU	CS/CQ	Force
up to 1 year	32	4	21	30	18	14	0	0	<b>119</b>
1yr to 5 years	34	9	37	39	41	42	2	0	<b>204</b>
5 to 10 years	10	1	10	2	4	7	1	0	<b>35</b>
10 to 15 years	8	2	12	3	0	4	3	2	<b>34</b>
15 to 20 years	3	1	6	0	0	8	2	0	<b>20</b>
20 to 25 years	0	0	0	0	0	0	0	0	<b>0</b>
25 years and over	3	1	1	0	1	1	0	1	<b>8</b>
Number of joiners	4	1	1	6	3	1	0	0	<b>16</b>