

Performance Profile October 2011



Summary and index

Summary

2011/12 Reporting Year

This document contains a strategic overview of the Constabulary's performance. It has a variety of performance measures within it. The format of the profile has been aligned to the Policing Priorities identified by the Control Strategy. It provides information on our performance against Force targets. It also aims to provide supplementary information to assist in understanding reasons behind the performance in these areas. It has been designed as a headline document that will enable our customers, both internally and externally, to easily assess performance information for key domains. This year, as last, additional monitoring information within the six domains of the Policing Priorities will be published quarterly - a calendar of publication is located at the bottom of this page. If during a month an issue is identified which needs to be highlighted, this will be done through 'exception reporting'.

A matrix can be found at the front of the profile which reflects our year to date performance against our targets.

The Force is in the process of changing from geographic Operational Command Units (OCUs) to geographic Areas. Accordingly, data is shown for Areas where possible, remaining as OCU if not.

Solved crime rates are now included. Solved crime relates to sanction detections, community resolution and other non-sanction detection types.

Where applicable, within the document, MSG (Most Similar Group) data is published along with the crime and detection data. MSGs are calculated by the Home Office based on a number of socio-demographic & geographic variables which are strongly linked to crime/incident levels and the fear of crime. These groups provide a benchmark for comparison of crime and detection rates. Alongside the applicable crime tables there are three rows relating to MSG data. The first provides the MSG position for the Force for that crime type. The second displays Actual, this is the number of offences per 1,000 population. The third row shows the MSG Average which is the total number of offences per 1,000 population divided by the number within the MSG. The same three rows are provided in relation to detection data, where data is provided in % figures rather than per 1,000 population. Due to geographic changes mentioned above, this data is currently only available at Force level.

Please note: iQuanta data is provisional. Within the profile, Hampshire data is published and compared against the MSG average. The other forces within Hampshire's MSG are: Avon and Somerset, Bedfordshire, Essex Hertfordshire, Kent, Sussex and Thames Valley. We are unable to provide figures from iQuanta for these forces, due to the provisional nature of this data.

This document is then taken forward by key stakeholders within the organisation to the Force Performance Review Group, where it is used to highlight areas of good performance and those for development.

This is an evolving document and as such, the contents of which may alter over time and any feedback would be welcomed by the Performance Review Team.

Calendar of Quarterly Reporting

April - Catching criminals & managing offenders and Protecting our communities
May - Making the most of our resources and Equipping our team to deliver
June - Providing an excellent service and An active presence in every neighbourhood
July - Catching criminals & managing offenders and Protecting our communities
August - Making the most of our resources and Equipping our team to deliver
September - Providing an excellent service and An active presence in every neighbourhood
October - Catching criminals & managing offenders and Protecting our communities
November - Making the most of our resources and Equipping our team to deliver
December - Providing an excellent service and An active presence in every neighbourhood
January - Catching criminals & managing offenders and Protecting our communities
February - Making the most of our resources and Equipping our team to deliver
March - The year end profile will have all six domain areas included

MSG Colour Key

Force
1-2
3-4
5-6
7-8

Index

Index			
Page	Year to date performance matrix		
2	Summary	including notes on matrix terminology	
3	Index		
4	Year to date targets matrix		
Providing an excellent service			
5	User satisfaction	Target	Consultation & Research Team
5	Being kept informed		Consultation & Research Team
5	Comparative satisfaction of minority ethnic groups		Consultation & Research Team
5	MSG user satisfaction data		Consultation & Research Team
An active presence in every neighbourhood			
6	Reduction in criminal damage	Target	Business Objects
Catching criminals and managing offenders and Protecting our communities			
7	Serious acquisitive crime (SAC) solved crime, detection rate and reduction in SAC	Target	Business Objects
8	Breakdown: Robbery, dwelling burglary, vehicle crime		Business Objects
8	Breakdown: Theft of a motor vehicle, theft from a motor vehicle		Business Objects
9	Violence against the person with injury	Target	Business Objects
10	Serious violent crime	Target	Business Objects
10	Homicide		Business Objects
11	Assault with less serious injury		Business Objects
12	Serious sexual offences		Business Objects
12	Rape		Business Objects
12	Outstanding suspects		Business Objects
13	Forensic identifications		Scientific Services
Catching criminals and managing offenders monitoring areas			
14	Detections by disposal		Business Objects
14	Restorative justice		Business Objects
14	Bail and arrest rates		Criminal Justice
14	Forensic results		Scientific Services
15	OBTJ data		Criminal Justice
Protecting our communities monitoring areas			
16	Non-dwelling burglary		Business Objects
17	Domestic crime and incidents		Business Objects
17	Hate crime		Business Objects
17	Drugs data		Business Objects
17	Gun and knife crime		Business Objects
18	Casualty reduction		Joint Operations unit
19	Cash seizure		Crime unit
19	Missing persons		Public Protection unit
19	Organised crime groups		Crime unit
20	All crime		Business Objects
Making the most of our resources			
21	BME workforce population	Target	HR
22	Specials scorecard (the target aspect is effective use of specials on page 17)	Target	Extended policy family team
23	Cost reductions and savings	Target	Finance
23	Protecting the frontline	Target	HR

Year to date performance targets matrix

	Target	Actual	Western	Eastern	Northern
Providing an excellent service					
Overall user satisfaction	>70%	65%	65%	66%	64%
An active presence in every neighbourhood					
Reduce criminal damage	<13885	13564	4564	5213	3787
	Area specific targets		4871	5343	3671
Catching criminals & managing offenders & Protecting our communities					
Serious acquisitive solved crime	>15%	16.01%	14.11%	14.83%	20.47%
Reduction in serious acquisitive crime	<9791	9987	3820	3588	2579
	Area specific targets		3773	3543	2476
Reduce violence against the person with injury	<8133	8644	2907	3640	2097
	Area specific targets		2787	3499	1847
Most serious violence sanction detections	>50%	55.92%	58.05%	46.72%	70.25%
Making the most of our resources					
BME workforce population	>2%	2.16%	This is a Force measure		
Total number of specials officers	>550	492	This is a Force measure		
Effective use of volunteers/specials	>67%	63%	This is a Force measure		
Cost reductions and savings	Maintain top quartile position	7 of 41	This is a Force measure		
Protect the frontline	>2224	2223	This is a Force measure		
Force Total - targets achieved	5		2	1	2

Notes to be read in conjunction with matrix

Overall user satisfaction data	Based on year to date rather than rolling months
BME	Black and minority ethnic
Area specific targets	Area specific targets are rounded to 0 decimal places; the actual figure may therefore seem the same but appear amber due to this rounding
Effective use of volunteers/specials	% based on the number of officers delivering a minimum of 16 hours of duty time per month
Protect the frontline	This figure is the average number of officers conducting frontline duties

Force target areas for providing an excellent service

	Target	Actual	Western	Eastern	Northern
Overall user satisfaction year to date	70%	65%	65%	66%	64%

User Satisfaction Survey results

Year to Date by Area (April 2011 - October 2011)

Includes victims of burglary, vehicle crime and violent crime who said they were completely or very satisfied

Target > 70%	Western	Eastern	Northern	Force	No. Surveys
Overall Satisfaction	65%	66%	64%	65%	2385
Being Kept Informed	53%	54%	51%	53%	2813

Rolling 3 months by Area (August 2011 - October 2011)

Includes victims of burglary, vehicle crime and violent crime who said they were completely or very satisfied

Target > 70%	Western	Eastern	Northern	Force	No. Surveys
Overall Satisfaction	67%	64%	60%	64%	1185
Being Kept Informed	55%	53%	48%	52%	1173

Rolling 12 months data by OCU (November 2010 - October 2011)

Includes victims of burglary, vehicle crime, violent crime (& RTCs up to March only) who said they were completely or very satisfied

Target > 70%	Central	Isle of Wight	North & East	Portsmouth	Southampton	Western	Force	No. Surveys
Overall Satisfaction	67%	71%	65%	67%	65%	71%	67%	6175
Being Kept Informed	55%	55%	52%	55%	52%	58%	55%	6107

Comparative satisfaction of minority ethnic groups

Rolling 12 months data (November 2010 - October 2011)

Includes victims of burglary, vehicle crime, violent crime and racist incidents (and RTCs up to March only) who said they were completely or very satisfied with the 'Whole experience'

	Completely and very satisfied	Completely, very and fairly satisfied	No. Surveys
White	68.4%	82.1%	5836
Minority Ethnic	56.1%	76.1%	510
Satisfaction Gap	12.3%	6.0%	

NOTE: Although this measure is not a target, due to its importance, we will be reporting the figures on a monthly basis

MSG information for user satisfaction

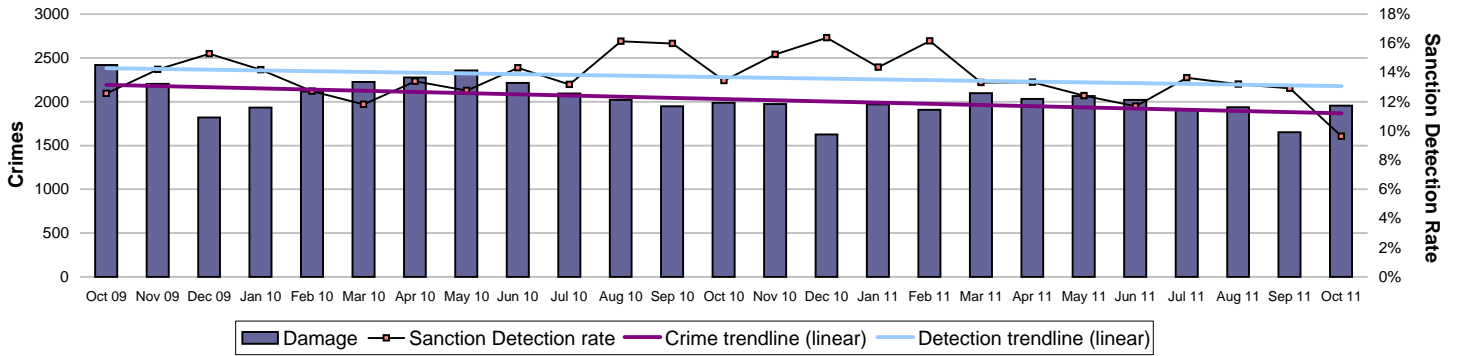
Latest iQuanta data for MSG for the 12 months ending June 2011 (iQuanta calculate satisfaction % based on those responding that they are completely, very or fairly satisfied)

	MSG position	MSG position	Change		MSG position	MSG position	Change
Vehicle crime				Burglary			
Ease of contact	6/8	5/8	↑	Ease of contact	3/8	3/8	↔
Actions taken	5/8	5/8	↔	Actions taken	3/8	7/8	↓
Follow up	5/8	6/8	↓	Follow up	1/8	3/8	↓
Treatment	6/8	6/8	↔	Treatment	3/8	4/8	↓
Whole Experience	5/8	6/8	↓	Whole Experience	3/8	3/8	↔
Violent crime				All users (excluding racist incidents)			
Ease of contact	6/8	4/8	↑	Ease of contact	3/8	5/8	↓
Actions taken	4/8	6/8	↓	Actions taken	3/8	6/8	↓
Follow up	6/8	7/8	↓	Follow up	5/8	6/8	↓
Treatment	6/8	6/8	↔	Treatment	5/8	5/8	↔
Whole Experience	6/8	6/8	↔	Whole Experience	4/8	6/8	↓

Force target areas for an active presence in every neighbourhood

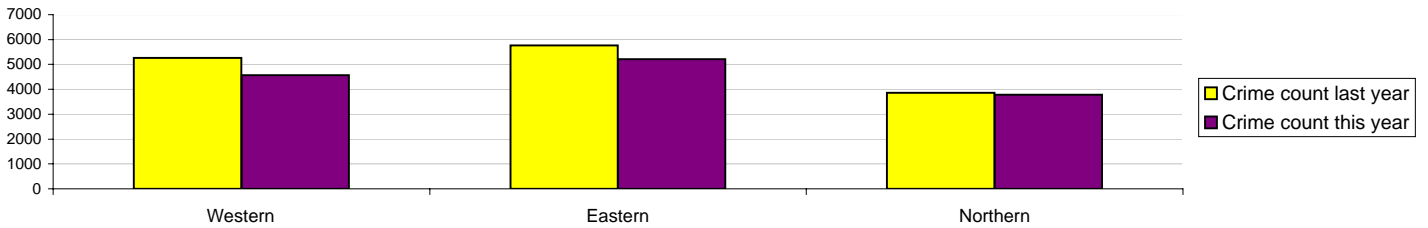
	Target	Actual	Western	Eastern	Northern
Reduce criminal damage	13885	13564	4564	5213	3787
	Area specific targets		4871	5343	3671

Criminal damage

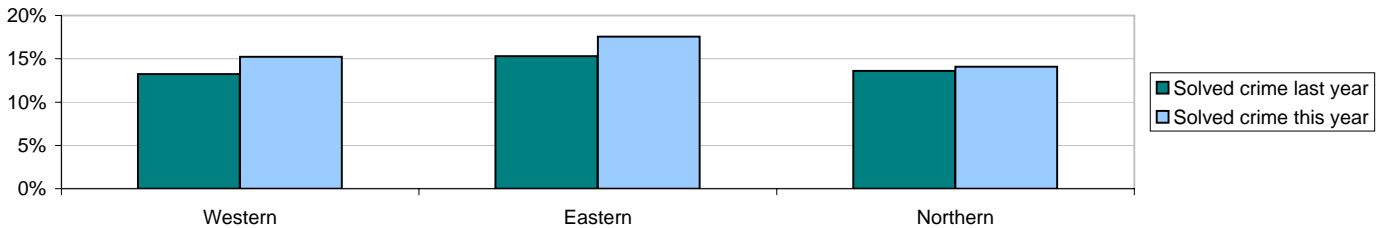


Crimes	Western	Eastern	Northern	Force
YTD Crimes	4564	5213	3787	13564
YTD Target	4871	5343	3671	13885
YTD 10/11 Crimes	5268	5760	3866	14894
This month	589	781	521	1891
% change from 10/11	-13.36%	-9.50%	-2.04%	-8.93%

	Force
MSG position	6 of 8
MSG actual	2.910
MSG average	2.715



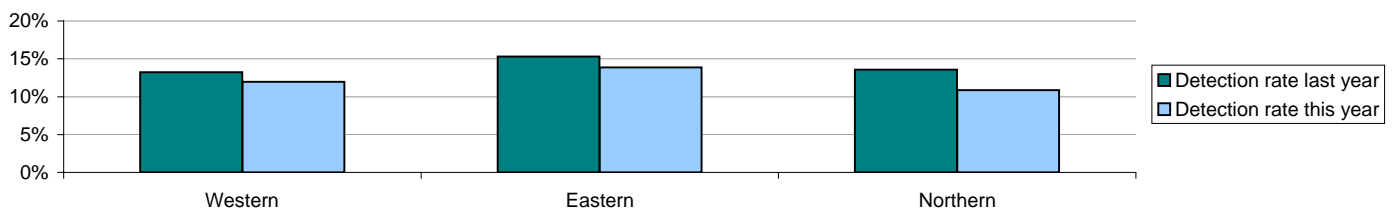
Solved crime	Western	Eastern	Northern	Force
YTD Solved crime	15.23%	17.55%	14.07%	15.80%
This month	15.45%	13.44%	12.86%	13.91%
YTD 10/11 Solved	13.23%	15.31%	13.61%	14.13%



Sanction detections	Western	Eastern	Northern	Force
YTD Detection rate	11.96%	13.87%	10.85%	12.39%
This month	10.70%	9.48%	9.60%	9.89%
YTD 10/11 Detections	13.23%	15.31%	13.55%	14.12%

	Force
MSG position	5 of 8
MSG actual	13.74%
MSG average	14.05%

Note: Detections refer to Sanction Detections ONLY



Force target areas for catching criminals and managing offenders

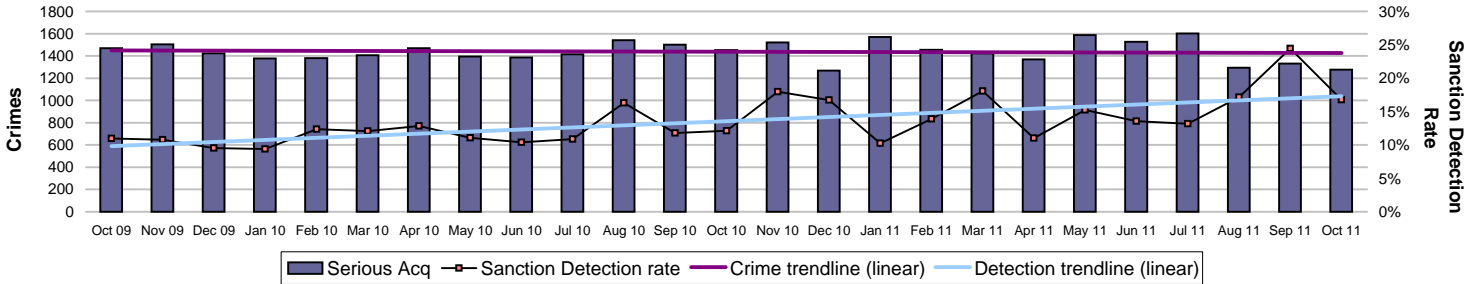
Force target areas for protecting our communities

	Target	Actual	Western	Eastern	Northern
Reduce serious acquisitive crime	9791	9987	3820	3588	2579
	Area specific targets		3773	3543	2476
Serious acquisitive solved crime rate	15%	16.0%	14.1%	14.8%	20.5%

Note: In June this year, Hampshire Police Authority agreed this target should be changed to "solved crime rate". This month the solved crime rate is included. Solved crime relates to sanction detections, community resolutions and other non-sanction detection types.

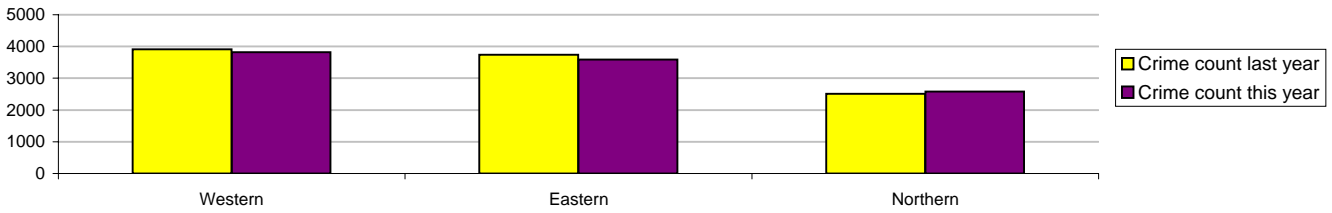
Serious acquisitive crime

Serious acquisitive crime consists of crimsec codes 28, 29, 34A, 34B, 37/2, 45 and 48

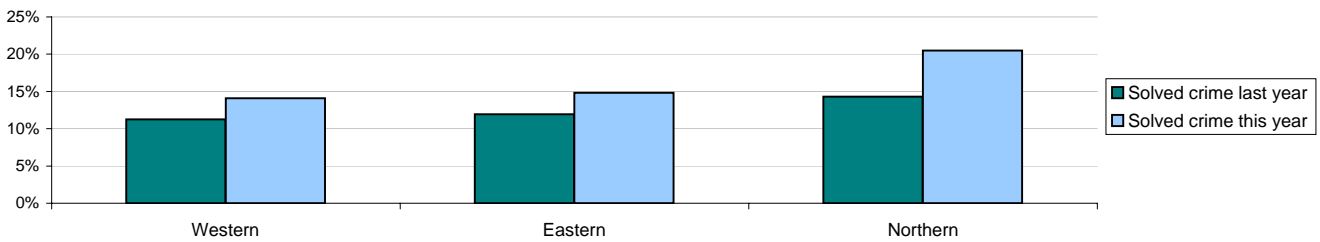


Crimes	Western	Eastern	Northern	Force
YTD Crimes	3820	3588	2579	9987
Target	3773	3543	2476	9791
YTD 10/11 Crimes	3907	3739	2513	10159
This month	495	472	309	1276
% change from 10/11	-2.23%	-4.04%	2.63%	-1.69%

	Force
MSG position	3 of 8
MSG actual	2.24
MSG average	2.45



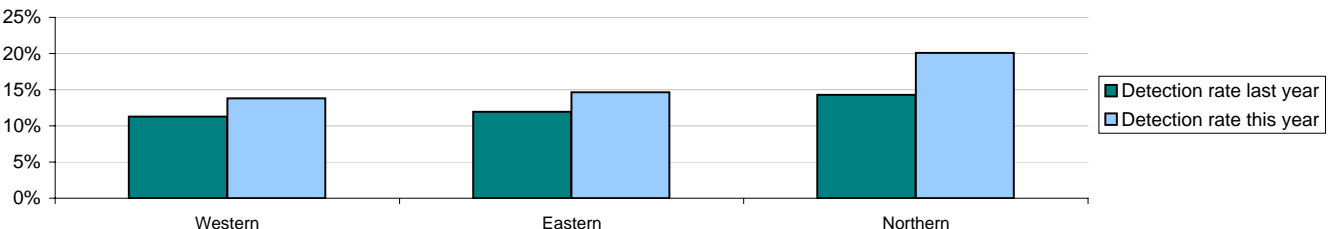
Solved crime	Western	Eastern	Northern	Force
Target >15%				
YTD Solved Crime	14.11%	14.83%	20.47%	16.01%
This month	13.54%	15.04%	27.18%	17.40%
YTD 10/11 Solved	11.26%	11.93%	14.33%	12.26%



Sanction detections	Western	Eastern	Northern	Force
YTD Detection Rate	13.82%	14.66%	20.09%	15.74%
This month	12.93%	14.62%	26.21%	16.77%
YTD 10/11 Detections	11.26%	11.93%	14.29%	12.26%

	Force
MSG position	4 of 8
MSG actual	15.15%
MSG average	17.27%

Note: Detections refer to Sanction Detections ONLY



Note: MSG data is always published a month in arrears.
For an explanation of this data, refer to the Summary on page 2

Force target areas for catching criminals and managing offenders

Force target areas for protecting our communities

Serious acquisitive crime breakdown

Robbery

Year to date	Western	Eastern	Northern	Force
Crimes	304	201	122	627
Last year's crimes	295	207	150	652
% change from last year	3.05%	-2.90%	-18.67%	-3.83%

Force MSG Position **4 of 8**

Solved crime rate	29.61%	22.89%	37.70%	29.03%
Sanction detection rate	28.95%	22.89%	37.70%	28.71%

Force MSG Position **7 of 8**

October 2011	Western	Eastern	Northern	Force
Crimes	28	34	18	80
Solved crime rate	39.29%	23.53%	66.67%	38.75%
Sanction detection rate	39.29%	23.53%	66.67%	38.75%

Dwelling burglary

Year to date	Western	Eastern	Northern	Force
Crimes	1145	1159	804	3108
Last year's crimes	1073	1103	631	2807
% change from last year	6.71%	5.08%	27.42%	10.72%

Force MSG Position **4 of 8**

Solved crime rate	18.78%	25.97%	25.50%	23.20%
Sanction detection rate	18.52%	25.80%	25.37%	23.01%

Force MSG Position **4 of 8**

October 2011	Western	Eastern	Northern	Force
Crimes	174	164	88	426
Solved crime rate	14.37%	23.78%	63.64%	28.17%
Sanction detection rate	13.79%	23.17%	63.64%	27.70%

Vehicle crime

Year to date	Western	Eastern	Northern	Force
Crimes	2371	2228	1653	6252
Last year's crimes	2539	2429	1732	6700
% change from last year	-6.62%	-8.28%	-4.56%	-6.69%

Force MSG Position **3 of 8**

Solved crime rate	9.87%	8.30%	16.76%	11.13%
Sanction detection rate	9.62%	8.12%	16.21%	10.83%

Force MSG Position **5 of 8**

October 2011	Western	Eastern	Northern	Force
Crimes	293	274	203	770
Solved crime rate	10.58%	8.76%	7.88%	9.22%
Solved crime numbers	31	24	16	71
Sanction detection rate	9.90%	8.39%	6.40%	8.44%

Theft of a motor vehicle

Year to date	Western	Eastern	Northern	Force
Crimes	546	458	393	1397
Solved crime rate	15.02%	21.18%	25.45%	19.97%
Sanction detection rate	14.84%	20.74%	24.94%	19.61%

Force MSG Position **3 of 8**

October 2011	Western	Eastern	Northern	Force
Crimes	57	58	40	155
Solved crime rate	24.56%	18.97%	30.00%	23.87%
Solved crime numbers	14	11	12	37
Sanction detection rate	24.56%	18.97%	30.00%	23.87%

Force MSG Position **4 of 8**

Theft from a motor vehicle

Year to date	Western	Eastern	Northern	Force
Crimes	1825	1770	1260	4855
Solved crime rate	8.33%	4.97%	14.05%	8.59%
Sanction detection rate	8.05%	4.86%	13.49%	8.30%

Force MSG Position **4 of 8**

October 2011	Western	Eastern	Northern	Force
Crimes	236	216	163	615
Solved crime rate	7.20%	6.02%	2.45%	5.53%
Solved crime numbers	17	13	4	34
Sanction detection rate	6.36%	5.56%	0.61%	4.55%

Force MSG Position **5 of 8**

Note: Robbery, dwelling burglary and vehicle crime are the component parts of serious acquisitive crime. These individual crime types do not have targets

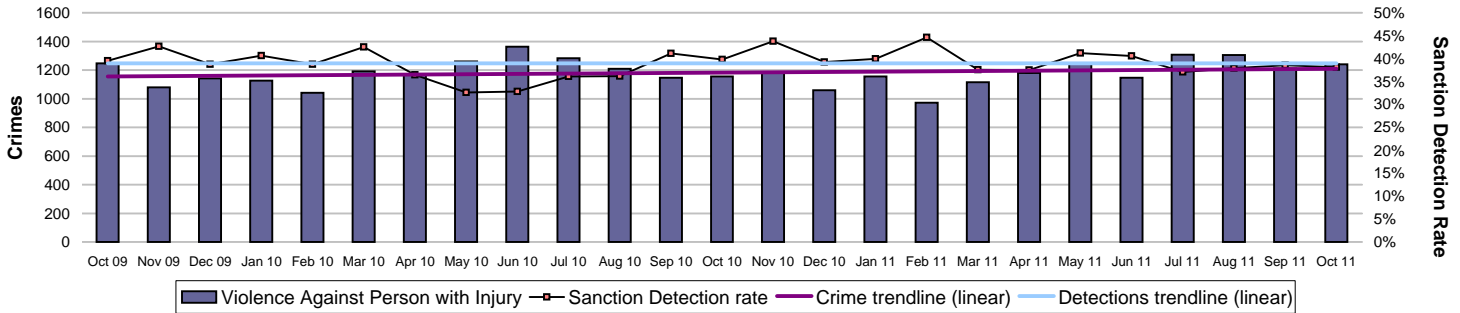
Force target areas for catching criminals and managing offenders

Force target areas for protecting our communities

	Target	Actual	Western	Eastern	Northern
Reduction of VAP with injury	8133	8644	2907	3640	2097
	Area specific targets		2787	3499	1847
Serious violent sanction detections	50.0%	55.9%	58.0%	46.7%	70.2%

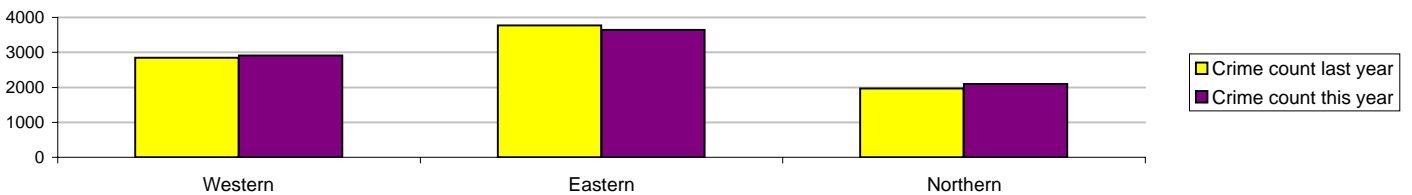
Violence against the person (VAP) with injury

VAP with injury crimsec codes 1, 2, 4.1-4.4, 4.6-4.10, 5A, 5B, 5C, 8F, 8G, 8H, 8J, 8K and 37.1

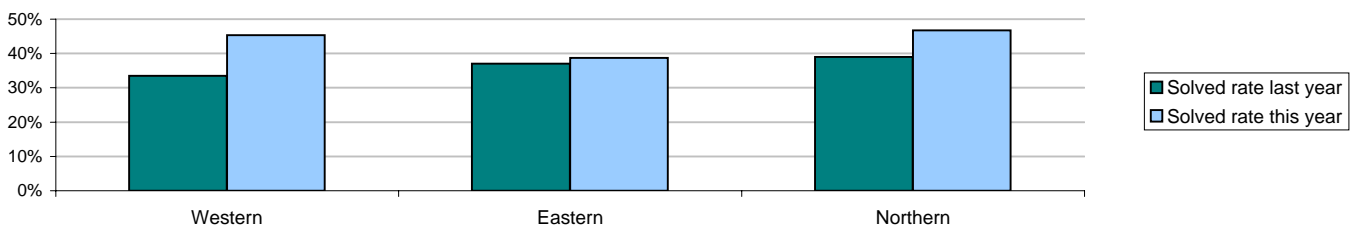


Crimes	Western	Eastern	Northern	Force
YTD Crimes	2907	3640	2097	8644
YTD Target	2787	3499	1847	8133
YTD 10/11 Crimes	2847	3775	1966	8588
This month	412	543	286	1241
% change from 10/11	2.11%	-3.58%	6.66%	0.65%

	Force
MSG position	8 of 8
MSG actual	2.03
MSG average	1.44



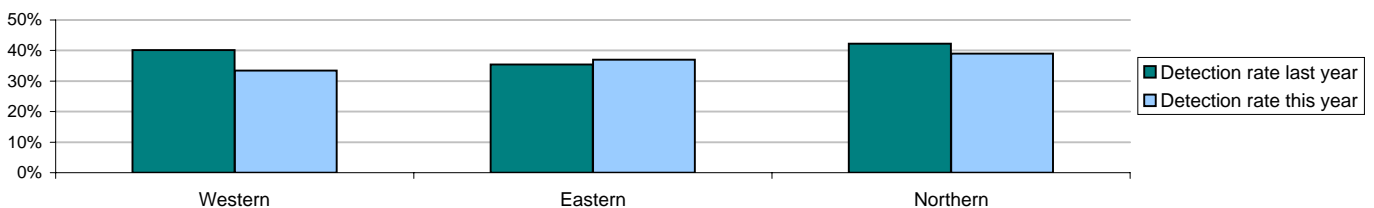
Solved crime	Western	Eastern	Northern	Force
YTD Solved Crime	45.30%	38.71%	46.78%	42.89%
This month	46.12%	35.91%	51.40%	42.87%
YTD 10/11 Solved	33.47%	37.03%	39.01%	36.31%



Sanction detections	Western	Eastern	Northern	Force
YTD Detection rate	40.18%	35.41%	42.25%	38.67%
This month	39.32%	33.15%	45.80%	38.11%
YTD 10/11 Detections	33.44%	37.01%	39.01%	36.28%

	Force
MSG position	7 of 8
MSG actual	39.41%
MSG average	42.14%

Note: Detections refer to Sanction Detections ONLY

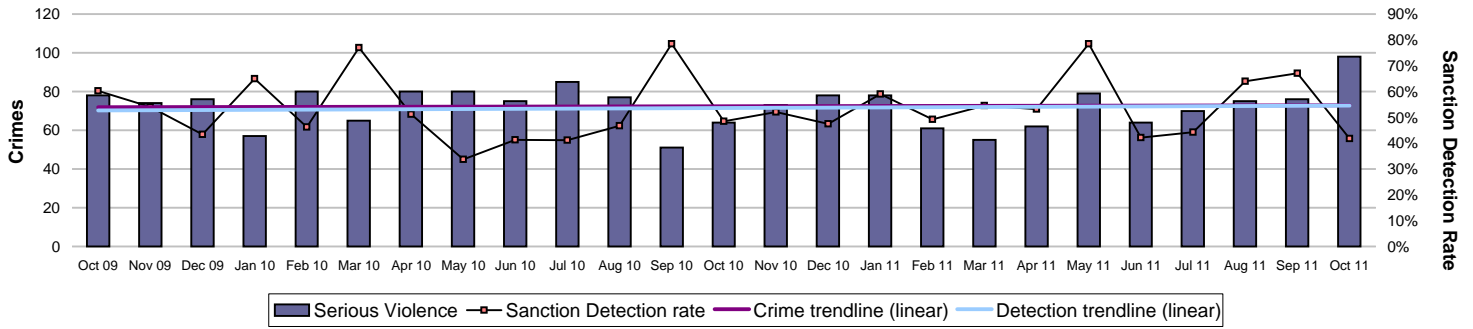


Force target areas for catching criminals and managing offenders

Force target areas for protecting our communities

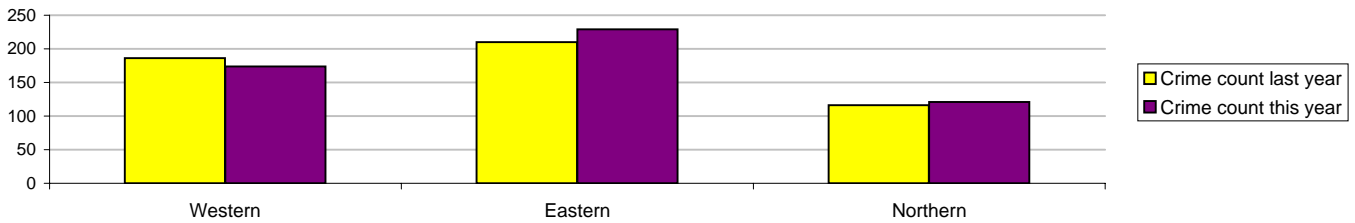
Serious violent crime

Serious violent crime consists of crimsec codes 1, 2, 4.1-4.4, 4.6, 4.8, 5A, 5B, 5C, 8F, 8H and 37.1

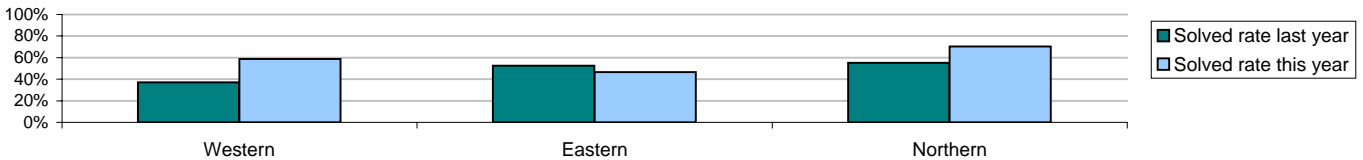


Crimes	Western	Eastern	Northern	Force
YTD Crimes	174	229	121	524
YTD 10/11 Crimes	186	210	116	512
This month	32	42	24	98
% change from 10/11	-6.45%	9.05%	4.31%	2.34%

	Force
MSG position	7 of 8
MSG actual	0.117
MSG average	0.090



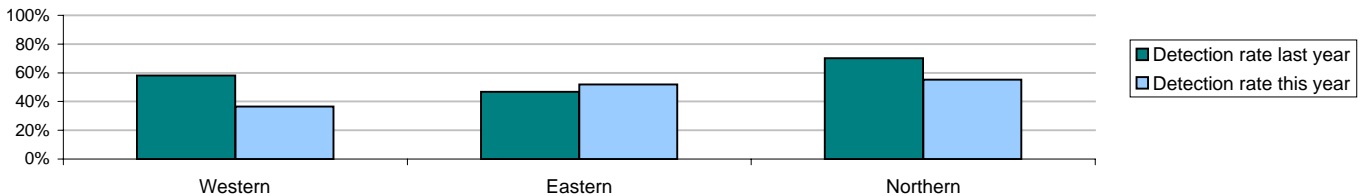
Solved crime	Western	Eastern	Northern	Force
YTD Solved Crime	58.62%	46.72%	70.25%	56.11%
This month	40.63%	28.57%	66.67%	41.84%
YTD 10/11 Solved	37.10%	52.38%	55.17%	47.46%



Sanction detections	Western	Eastern	Northern	Force
Target >50%				
YTD Detection Rate	58.05%	46.72%	70.25%	55.92%
This month	40.63%	28.57%	66.67%	41.84%
YTD 10/11 Detections	36.56%	51.90%	55.17%	47.07%

	Force
MSG position	4 of 8
MSG actual	54.64%
MSG average	53.83%

Note: Detections refer to Sanction Detections ONLY



Homicide

	Western	Eastern	Northern	Force
YTD October 2011 - total	2	0	2	4
YTD Domestic Homicides 2011/2012	1	0	0	1
YTD October 2010 - total	5	1	1	7
YTD Domestic Homicides 2010/2011	2	1	0	3

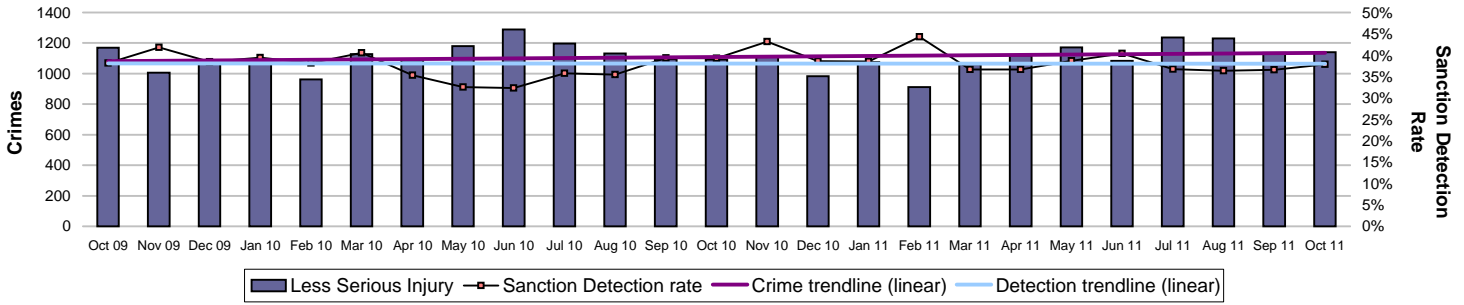
Note: A domestic homicide is where the relationship between victim and suspect was either: spouse, common-law spouse or cohabiting partner, boyfriend/girlfriend, ex-boyfriend/girlfriend or adulterous relationship

Force target areas for catching criminals and managing offenders

Force target areas for protecting our communities

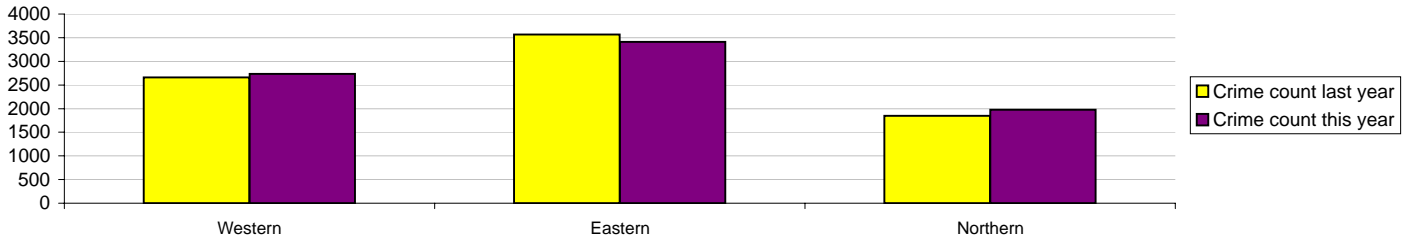
Assault with less serious injury

Assault with less serious injury consists of crimsec codes 8G and 8J

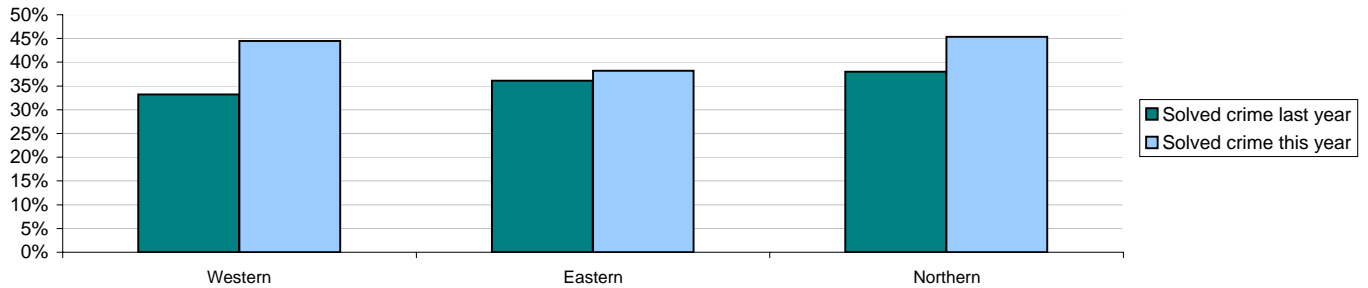


Crimes	Western	Eastern	Northern	Force
YTD Crimes	2732	3408	1976	8116
YTD 10/11 Crimes	2661	3564	1850	8075
This month	380	499	262	1141
% change from 10/11	2.67%	-4.38%	6.81%	0.51%

	Force
MSG position	8 of 8
MSG actual	1.914
MSG average	1.347



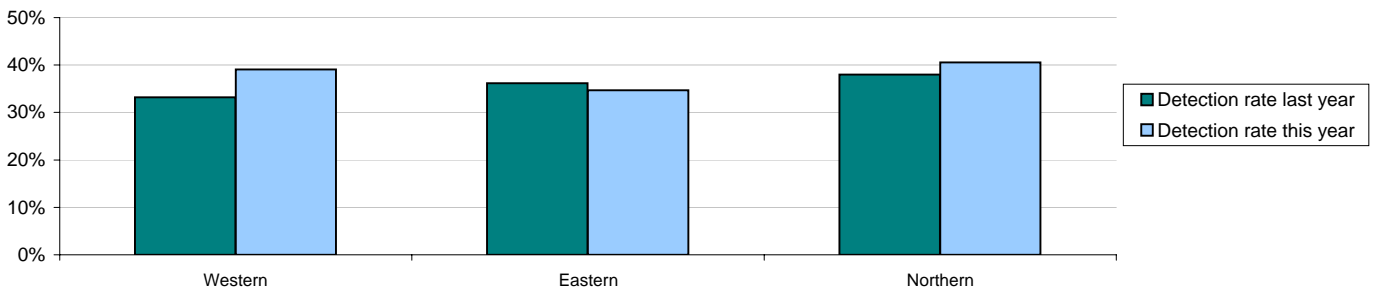
Solved Crime	Western	Eastern	Northern	Force
YTD Solved Crime	44.47%	38.20%	45.34%	42.05%
This month	46.58%	36.67%	50.00%	43.03%
YTD 10/11 Solved	33.22%	36.14%	38.00%	35.60%



Sanction detections	Western	Eastern	Northern	Force
YTD Detection Rate	39.06%	34.68%	40.54%	37.58%
This month	39.21%	33.67%	43.89%	37.86%
YTD 10/11 Detections	33.22%	36.14%	38.00%	35.60%

	Force
MSG position	7 of 8
MSG actual	38.44%
MSG average	41.32%

Note: Detections refer to Sanction Detections ONLY



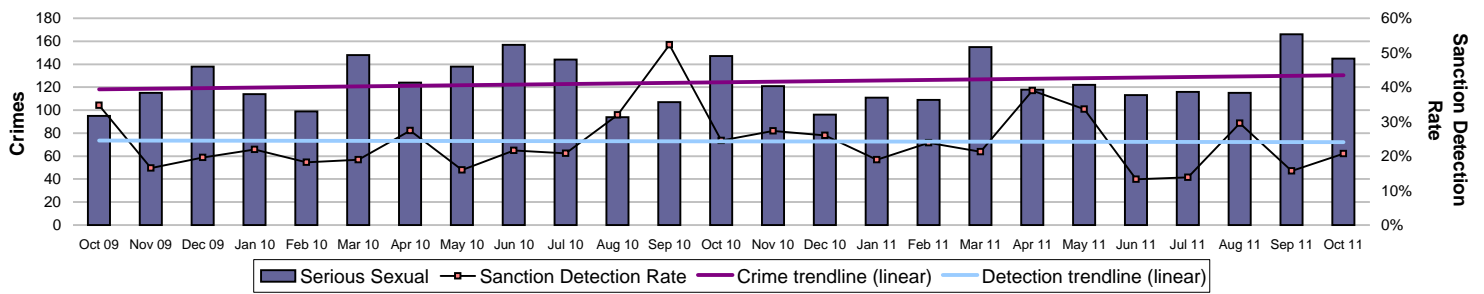
Note: MSG data is always published a month in arrears.
For an explanation of this data, refer to the Summary on page 2

Force target areas for catching criminals and managing offenders

Force target areas for protecting our communities

Serious sexual offences

Serious sexual offences consist of crimsec codes 19A-H, 21, 17A, 17B, 20A, 20B, 22A, 70, 71 and 72

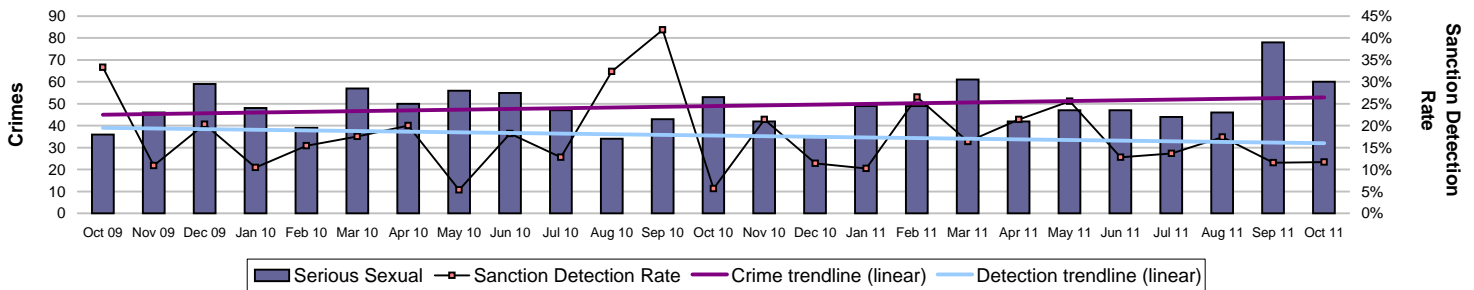


Crimes	Western	Eastern	Northern	Force
YTD Crimes	309	361	225	895
YTD 10/11 Crimes	316	370	225	911
This month	51	56	38	145
% change from 10/11	-2.22%	-2.43%	0.00%	-1.76%

Solved Crime	Western	Eastern	Northern	Force
YTD Solved crime	30.10%	19.67%	21.33%	23.69%
This month	33.33%	16.07%	15.79%	22.07%
YTD 10/11 Solved crime	26.90%	23.78%	32.44%	27.00%

Sanction detections	Western	Eastern	Northern	Force
YTD Detections	29.45%	19.39%	20.89%	23.24%
This month	31.37%	14.29%	15.79%	20.69%
YTD 10/11 Detections	26.27%	23.51%	32.00%	26.56%

Rape



Crimes	Western	Eastern	Northern	Force
YTD Crimes	132	150	82	364
YTD 10/11 Crimes	121	124	93	338
This month	22	23	15	60
% change from 10/11	9.09%	20.97%	-11.83%	7.69%

Solved Crime	Western	Eastern	Northern	Force
YTD Solved crime	18.94%	13.33%	15.85%	15.93%
This month	27.27%	8.70%	0.00%	13.33%
YTD 10/11 Solved crime	19.83%	17.74%	18.28%	18.64%

Sanction detections	Western	Eastern	Northern	Force
YTD Detection rate	18.94%	12.67%	15.85%	15.66%
This month	27.27%	4.35%	0.00%	11.67%
YTD 10/11 Detection rate	19.01%	16.94%	18.28%	18.05%

Outstanding suspects - suspects that are shown on RMS for offences up to and including 1 October 2011

	Western	Eastern	Northern	Force
Crime count	245	350	295	890
Total suspects	270	396	341	1007

Note: Previously, outstanding suspects related to those crimes over 90 days old; data now relates to crimes over 30 days old

Note: MSG data is always published a month in arrears.
For an explanation of this data, refer to the Summary on page 2

Force target areas for catching criminals and managing offenders

Force target areas for protecting our communities

Forensic identifications

This data shows the forensic identifications along with the Area and District percentage conversion rate

May 2011 - September 2011

All identifications and primary detections

Area	District	Identifications	Detections	District % conversion	Area % conversion
Western	New Forest	99	43	43.43%	49.50%
	Eastleigh	83	40	48.19%	
	Southampton	311	161	51.77%	
Eastern	Isle of Wight	90	37	41.11%	56.30%
	Fareham & Gosport	87	69	79.31%	
	Portsmouth	301	167	55.48%	
	Havant	94	49	52.13%	
Northern	Winchester	84	41	48.81%	44.10%
	Hart & Rushmoor	128	39	30.47%	
	Basingstoke	98	59	60.20%	
	Andover	30	11	36.67%	

	Total
Force	1405
Force Detections	716
Force %	51.00%

Identification/detection conversion rate by District



Monitoring information for catching criminals and managing offenders

Detections by disposal type - Volume

Year to date October 2011	Western	Eastern	Northern	Force
Charged	3531	4249	2779	10559
Summonsed	440	541	293	1274
Charged - alternative offence rule	810	965	716	2491
Summons reviewed & approved by DDM	1	0	0	1
Simple caution	805	1012	672	2489
Conditional caution	28	42	22	92
Juvenile reprimand/final warning	238	270	292	800
TIC recorded	221	293	457	971
TIC not recorded	9	12	9	30
Penalty notice for disorder	409	509	388	1306
Street warning - cannabis possession	368	592	452	1412
Offender dead	0	0	1	1
CPS - evidence/no proceedings	2	1	0	3
Community resolution	804	1003	688	2495
	7666	9489	6769	23924

Detections by disposal type - Proportion

Year to date October 2011	Western	Eastern	Northern	Force
Charged	46.1%	44.8%	41.1%	44.1%
Summonsed	5.7%	5.7%	4.3%	5.3%
Charged - alternative offence rule	10.6%	10.2%	10.6%	10.4%
Summons reviewed & approved by DDM	0.0%	0.0%	0.0%	0.0%
Simple caution	10.5%	10.7%	9.9%	10.4%
Conditional caution	0.4%	0.4%	0.3%	0.4%
Juvenile reprimand/final warning	3.1%	2.8%	4.3%	3.3%
TIC recorded	2.9%	3.1%	6.8%	4.1%
TIC not recorded	0.1%	0.1%	0.1%	0.1%
Penalty notice for disorder	5.3%	5.4%	5.7%	5.5%
Street warning - cannabis possession	4.8%	6.2%	6.7%	5.9%
Offender dead	0.0%	0.0%	0.0%	0.0%
CPS - evidence/no proceedings	0.0%	0.0%	0.0%	0.0%
Community resolution	10.5%	10.6%	10.2%	10.4%

Percentage bailed on first submission

Percentage of entrants into custody bailed as first disposal

September 2011	Western	Eastern	Northern	Force
No of arrests	1701	2430	1301	5432
All Disposals	415	806	378	1599
Bailed on first submission	24.40%	33.17%	29.05%	29.44%

Arrest and disposal information

September 2011	Western	Eastern	Northern	Force
Community resolution	113	152	83	348
Charged	611	718	498	1827
Cautioned	131	175	103	409
PND	50	65	43	158
TIC	62	89	319	470
Warning	43	167	65	275
No further action	716	837	434	1987

Forensic results for Vehicle Crime

DNA - theft of a motor vehicle	Force
YTD October 2011	8
YTD October 2011	9
Difference	-1

Fingerprint Detections - theft of a motor vehicle	Force
YTD October 2011	40
YTD October 2011	22
Difference	18

DNA - theft from a motor vehicle	Force
YTD October 2011	21
YTD October 2011	15
Difference	6

Fingerprint Detections - theft from a motor vehicle	Force
YTD October 2011	42
YTD October 2011	41
Difference	1

Monitoring information for catching criminals and managing offenders

Offenders brought to justice

Serious Violent offences OBTJ

Data to July 2011

	Recorded Crime		Total OBTJs		Hampshire		Rolling Average	
	Month	RA	Month	RA	Month	RA	MSG	E&W
Attempted murder	1	11	0	4	0.0%	36.4%	44.7%	22.4%
Death by aggravated vehicle taking	0	0	0	0	0.0%	0.0%	100.0%	100.0%
Cause death by dangerous driving etc	0	7	0	5	0.0%	71.4%	53.3%	56.8%
Homicide and child destruction	0	9	0	7	0.0%	77.8%	88.7%	83.5%
Wounding and GBH without intent	73	805	13	210	17.8%	26.1%	28.7%	23.9%

	Convictions	Caution	TICs	Cannabis Warning	PNDs
Rolling 12 month Average					
Attempted murder	4	0	0	0	0
Death by aggravated vehicle taking	0	0	0	0	0
Cause death by dangerous driving etc	5	0	0	0	0
Homicide and child destruction	7	0	0	0	0
Wounding and GBH without intent	205	5	0	0	0

RA = Rolling Annual
PND = Penalty Notice for Disorder
E&W = England & Wales

Serious Acquisitive offences OBTJ

Data to July 2011

	Recorded Crime		Total OBTJs		Hampshire		Rolling Average	
	Month	RA	Month	RA	Month	RA	MSG	E&W
Aggravated burglary in a dwelling	0	32	0	19	0.0%	59.4%	43.7%	28.4%
Aggravated vehicle taking	18	176	4	33	22.2%	18.8%	28.2%	27.7%
Burglary in a dwelling	444	5229	82	727	18.5%	13.9%	17.1%	15.3%
Robbery	99	1069	9	178	9.1%	16.7%	23.9%	17.7%
Theft from a vehicle	765	8881	33	710	4.3%	8.0%	9.9%	8.5%
Theft of a motor vehicle	193	2211	4	110	2.1%	5.0%	7.2%	5.9%

	Convictions	Caution	TICs	Cannabis Warnings	PNDs
Rolling 12 month Average					
Aggravated burglary in a dwelling	19	0	0	0	0
Aggravated vehicle taking	32	1	0	0	0
Burglary in a dwelling	457	37	233	0	0
Robbery	174	3	1	0	0
Theft from a vehicle	269	47	394	0	0
Theft of a motor vehicle	29	4	77	0	0

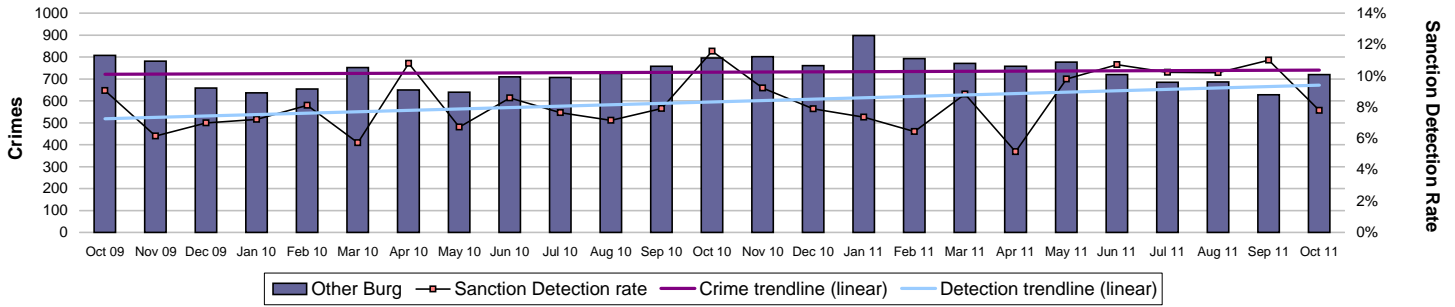
Serious sexual crime OBTJ rate

The table below shows % of persons brought to justice for serious sexual crimes against the total number of serious sexual crimes

OBTJ Crime category	Jan-11	Feb-11	Mar-11	Apr-11	May-11	Jun-11	Rolling average
Tier 1: Serious Sexual Offences	38%	37%	58%	36%	13%	31%	35%

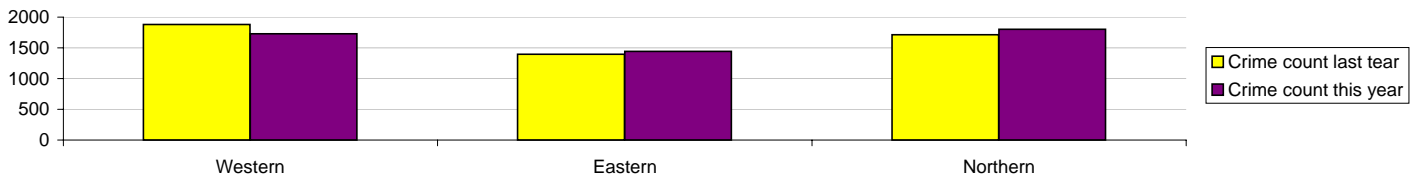
Monitoring information for protecting our communities

Non-Dwelling Burglary

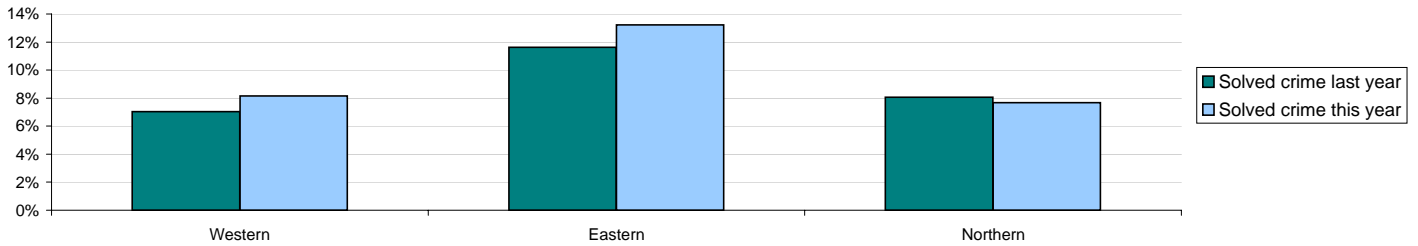


Crimes	Western	Eastern	Northern	Force
YTD Crimes	1727	1444	1801	4972
YTD 10/11 Crimes	1879	1394	1711	4984
This month	276	208	235	719
% change from 10/11	-8.09%	3.59%	5.26%	-0.24%

	Force
MSG position	5 of 8
MSG actual	1.058
MSG average	1.047



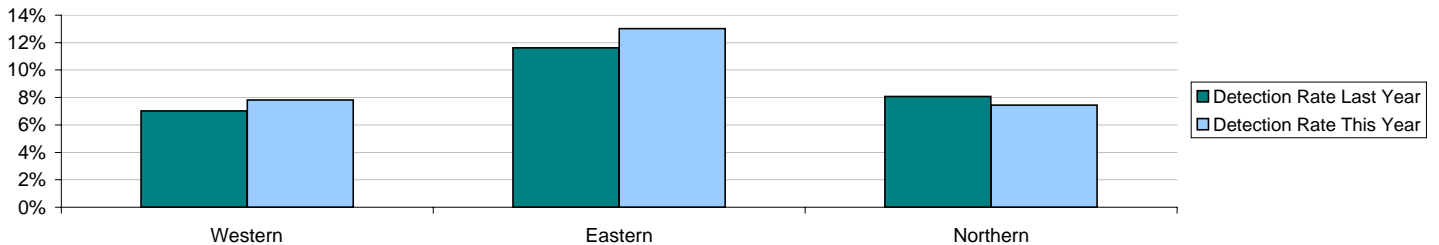
Solved Crime	Western	Eastern	Northern	Force
YTD Solved Crime	8.2%	13.2%	7.7%	9.45%
This month	5.07%	15.38%	5.11%	8.07%
YTD 10/11 Solved	7.03%	11.62%	8.07%	8.67%



Detections	Western	Eastern	Northern	Force
YTD Detection Rate	7.82%	13.02%	7.44%	9.19%
This month	5.07%	14.90%	4.68%	7.79%
YTD 10/11 Detections	7.03%	11.62%	8.07%	8.67%

	Force
MSG position	4 of 8
MSG actual	8.94%
MSG average	10.02%

Note: Detections refer to Sanction Detections ONLY



Monitoring information for protecting our communities

Domestic Crimes and Incidents

YTD October 2011	Western	Eastern	Northern	Force
Domestic Crimes	1662	2056	1327	5045
Domestic Detection Rate	37.91%	37.16%	38.96%	37.88%
Domestic Solved Crime Rate	39.53%	37.89%	41.67%	39.43%
Domestic Crimes Arrests	1173	1624	974	3771
Domestic Crime Arrest Rate	70.58%	78.99%	73.40%	74.75%

YTD October 2011	Western	Eastern	Northern	Force
Domestic Crimes	1662	2056	1327	5045
Repeat Domestic	404	536	264	1204
% Repeat	24.31%	26.07%	19.89%	23.87%

Domestic Incidents	4761	6006	3757	14524
Repeat Domestic	2221	2845	1481	6547
% Repeat	46.65%	47.37%	39.42%	45.08%

Hate Crimes and Incidents

YTD October 2011	Western	Eastern	Northern	Force
Incidents	416	437	226	1079
Crimes	275	287	156	718
Sanction detections	114	117	70	301
Sanction detection rate	41.45%	40.77%	44.87%	41.92%

Class A drug detections

	Western	Eastern	Northern	Force
YTD October 2011	23	39	35	97
YTD October 2010	80	42	49	171
% change from 10/11	-71.3%	-7.1%	-28.6%	-43.3%

Drug seizures information

	Central	Isle of Wight	North & East	Portsmouth	Southampton	Western	Force
YTD June 2011	292	174	391	166	226	152	1401
YTD June 2010	207	366	235	212	219	133	1372
% change from 10/11	41.1%	-52.5%	66.4%	-21.7%	3.2%	14.3%	2.1%

Note: This data is collated quarterly and presented one quarter in arrears

Gun crime rate

	Central	Isle of Wight	North & East	Portsmouth	Southampton	Western	Force	MSG position to June 2011
YTD October 2011	11	5	15	4	13	10	58	4 of 8
YTD October 2010	16	4	20	6	16	8	70	
% change from 10/11	-31.3%	100.0%	-25.0%	-33.3%	-18.8%	25.0%	-17.1%	

Gun crime figures published reflect the APACS technical definition which includes "where the victim is convinced of the presence of a firearm, even if it is concealed and there is evidence of the suspect's intention to create this impression".

Knife crime rate

	Central	Isle of Wight	North & East	Portsmouth	Southampton	Western	Force	MSG position to March 2011
YTD October 2011	45	13	44	42	82	31	257	3 of 8
YTD October 2010	53	21	45	51	75	25	270	
% change from 10/11	-15.1%	-38.1%	-2.2%	-17.6%	9.3%	24.0%	-4.8%	

Knife = knife or other sharp instrument (including broken glass/bottles) piercing the skin or, for threats and attempts, instruments normally capable of piercing the skin. The measure for counting broken glass/bottles changed for 09-10 with less occurrences being counted by the Home Office. Knife crime figures published reflect the APACS technical definition which includes "where the victim is convinced of the presence of a knife, even if it is concealed and there is evidence of the suspect's intention to create this impression".

Monitoring information for protecting our communities

Note: Year to date (YTD) in relation to casualty data is January to December

Casualty reduction

All KSI casualties

	YTD 2011	YTD 2010	% change from 2010	September 2011	September 2010	% change from 2010
Basingstoke & Deane BC	66	65	1.5%	9	7	28.6%
Eastleigh BC	41	36	13.9%	5	5	0.0%
Fareham BC	45	44	2.3%	6	4	50.0%
Gosport BC	19	20	-5.0%	1	2	-50.0%
Hart DC	47	32	46.9%	4	2	100.0%
Havant BC	34	21	61.9%	6	1	500.0%
New Forest DC	103	76	35.5%	12	10	20.0%
East Hants DC	72	43	67.4%	7	6	16.7%
Portsmouth Unitary Authority	95	78	21.8%	7	13	-46.2%
Rushmoor BC	30	26	15.4%	3	4	-25.0%
Southampton Unitary Authority	114	93	22.6%	13	20	-35.0%
Test Valley BC	61	50	22.0%	5	5	0.0%
Winchester CC	64	72	-11.1%	7	9	-22.2%
Isle of Wight Unitary Authority	77	61	26.2%	11	8	37.5%
Force	868	717	21.1%	96	96	0.0%

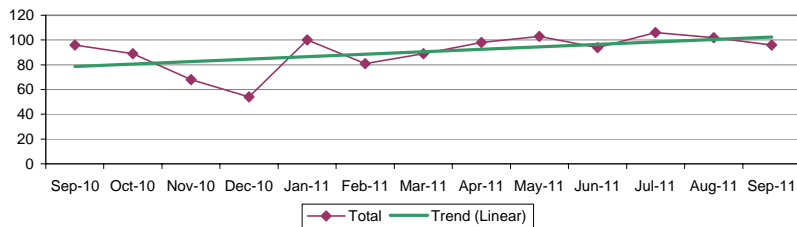
BC = Borough Council

CC = County Council

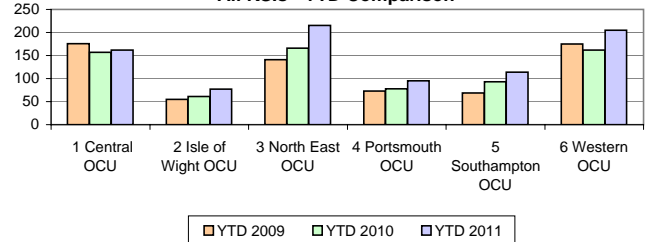
DC = District Council

KSI = Killed / seriously injured

All KSI Casualties



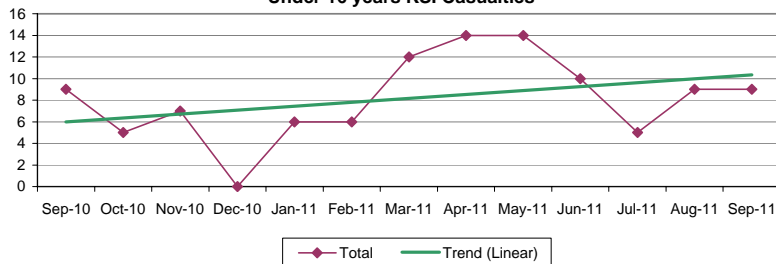
All KSIs - YTD Comparison



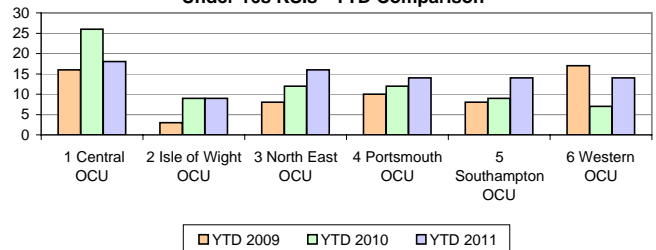
Under 16 KSI casualties

	YTD 2011	YTD 2010	% change from 2010	September 2011	September 2010	% change from 2010
Basingstoke & Deane BC	9	3	200.0%	2	0	-
Eastleigh BC	3	1	200.0%	0	0	-
Fareham BC	4	6	-33.3%	2	0	-
Gosport BC	5	5	0.0%	0	1	-100.0%
Hart DC	2	1	100.0%	0	0	-
Havant BC	6	8	-25.0%	0	1	-100.0%
New Forest DC	8	2	300.0%	1	0	-
East Hants DC	3	3	0.0%	0	0	-
Portsmouth Unitary Authority	14	12	16.7%	0	3	-100.0%
Rushmoor BC	2	5	-60.0%	0	1	-100.0%
Southampton Unitary Authority	14	9	55.6%	4	2	100.0%
Test Valley BC	3	4	-25.0%	0	0	-
Winchester CC	3	7	-57.1%	0	1	-100.0%
Isle of Wight Unitary Authority	9	9	0.0%	0	0	-
Force	85	75	13.3%	9	9	0.0%

Under 16 years KSI Casualties



Under 16s KSIs - YTD Comparison



Monitoring information for protecting our communities

POCA - Confiscation Orders and Cash Forfeitures

01 April 2011 - 31 October 2011

Number of Confiscation Orders made	78
Value of Confiscation Orders made	£597,477.11
Number of Cash Forfeitures	30
Value of Cash Forfeitures	£120,578.01
Collections by HMCS (April - September 2011)	£1,077,827.06
Numbers of Restraints	29

*HMCS = Her Majesty's Customs Service

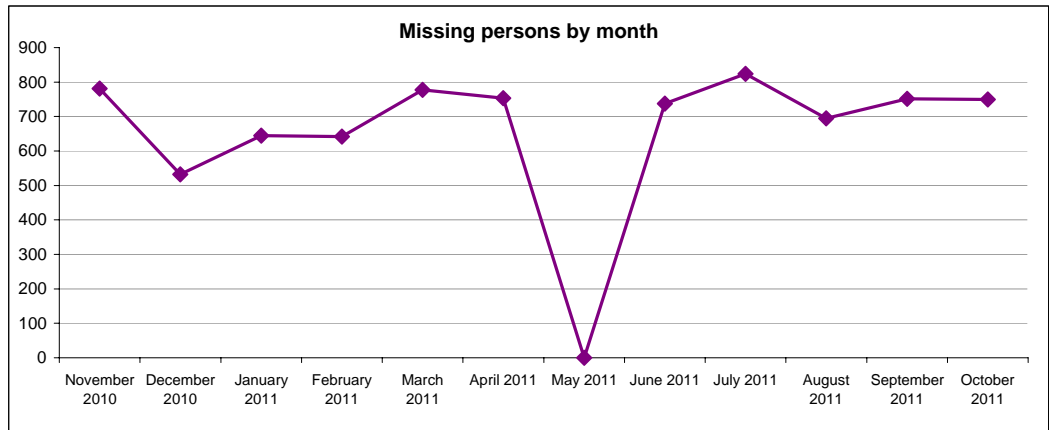
Missing Persons

Breakdown by OCU

	Western	Eastern	Nothern	Force
September 2011	235	318	198	751
October 2011	248	314	188	750

Note: Missing persons data is only available by Area from September 2011

	Force
November 2010	781
December 2010	532
January 2011	645
February 2011	642
March 2011	777
April 2011	753
May 2011	No data
June 2011	737
July 2011	824
August 2011	695
September 2011	751
October 2011	750



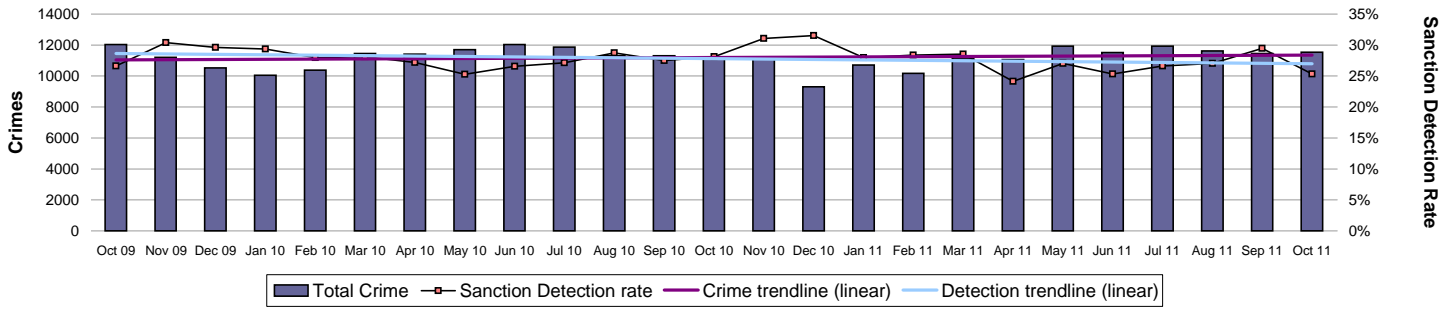
Number of Organised Crime Groups (OCGs) disrupted

YTD October 2011

	2010/2011	2011/2012	Disrupted against identified
Number of OCGs identified and mapped	No data supplied		N/A
Number of OCGs disrupted or partially disrupted through Crime OCU activity	No data supplied		
Number of OCGs subject to tactical activity	No data supplied		

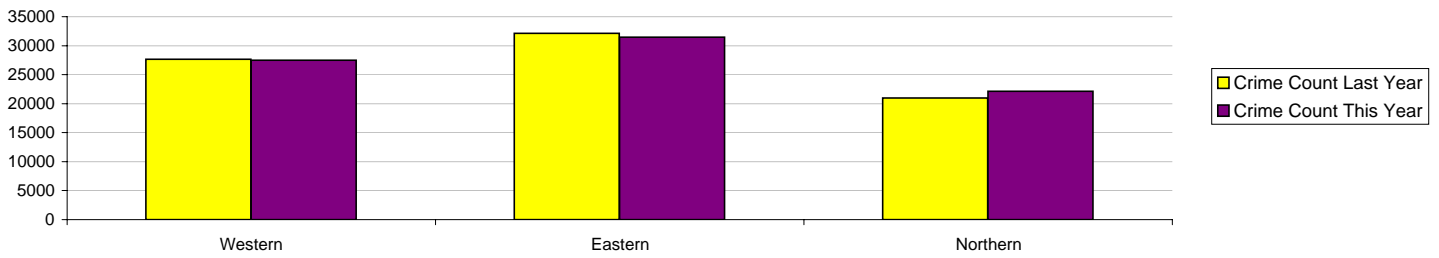
Monitoring information for protecting our communities

All crime

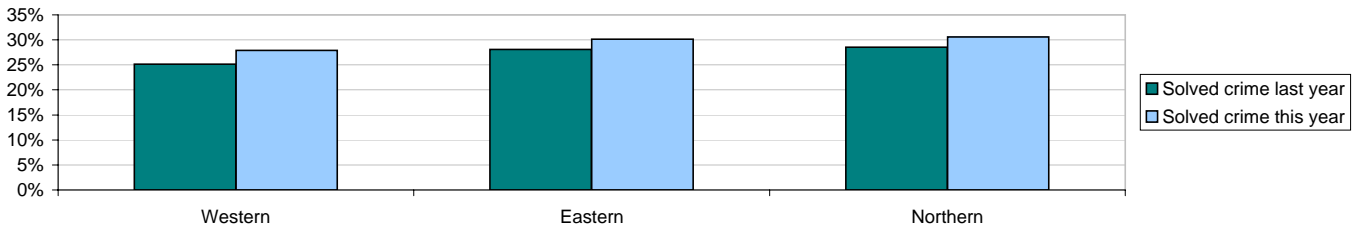


Crimes	Western	Eastern	Northern	Force
YTD Crimes	27482	31467	22120	81069
YTD 10/11 Crimes	27647	32153	21005	80805
This month	3995	4528	3028	11551
% change from 10/11	-0.60%	-2.13%	5.31%	0.33%

	Force
MSG position	8 of 8
MSG actual	18.54
MSG average	16.46



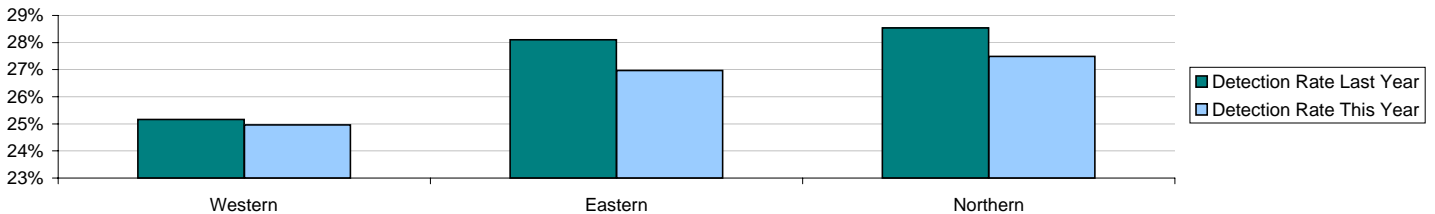
Solved Crime	Western	Eastern	Northern	Force
YTD Solved Crime	27.9%	30.2%	30.6%	29.52%
This month	28.54%	28.27%	30.12%	28.85%
YTD 10/11 Solved	25.17%	28.12%	28.57%	27.23%



Detections	Western	Eastern	Northern	Force
YTD Detection Rate	24.96%	26.97%	27.49%	26.43%
This month	24.96%	24.87%	26.42%	25.31%
YTD 10/11 Detections	25.16%	28.11%	28.54%	27.21%

	Force
MSG position	5 of 8
MSG actual	27.78%
MSG average	29.02%

Note: Detections refer to Sanction Detections ONLY



Force target areas making the most of our resources

	Target	Actual
BME Workforce population	2%	2.16%
Total number of specials officers	550	492
Effective use of specials	67%	63%
Cost reductions and savings	To maintain top quartile position	7 of 41
Protecting the frontline	2224	2223

BME workforce population

The 2011/2012 target is to retain 2% of all officers and staff as BME

BME retention	All staff	Minority ethnic staff	Percentage
YTD October 2011	5873.39	127.04	2.16%

Police officer	Police officers	Minority ethnic police officers	Percentage
YTD August 2011	3532.02	84.43	2.39%

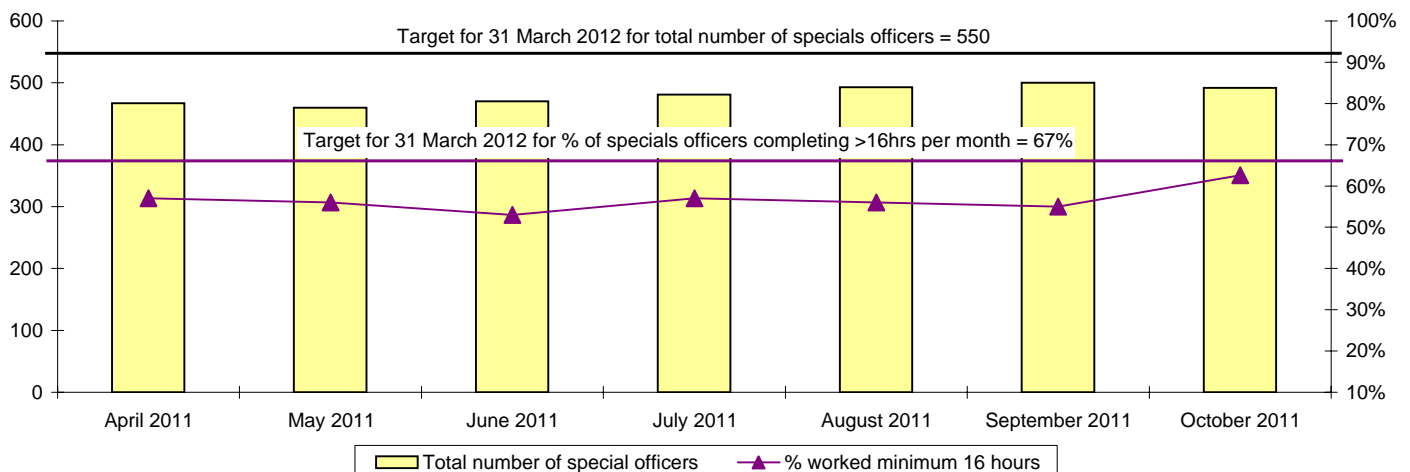
Police staff (incl PCSOs)	Police staff	Minority ethnic police staff	Percentage
YTD August 2011	2341.37	42.61	1.82%

Effective use of specials/volunteers

October 2011

Target: 550 officers
Target: 67% completing >16hrs per month

	Total number of specials officers	Number of Specials completing >16hrs per month	% minimum 16 hours duty per month
April 2011	467	266	57%
May 2011	460	257	56%
June 2011	470	249	53%
July 2011	481	272	57%
August 2011	493	276	56%
September 2011	500	274	55%
October 2011	492	308	63%
November 2011			
December 2011			
January 2012			
February 2012			
March 2012			



Force target areas making the most of our resources

Special Constable Balanced Scorecard

	Western	Eastern	Northern	RPU	CS/CQ	Force
Total number of officers	143	190	148	6	5	492
Number of officers on leave of absence	2	2	4	0	0	8
Total number of operational hours	2981	4524	3493	112	230	11340
Number of operational hours per 1000 population	5.6	7.1	5.8	N/A	N/A	6.4
Average number of operational hours per officer	21.1	24.1	24.3	18.6	46.0	23.4
Leavers joining regular service or transferring to another Force	0	0	0	0	0	0
Leavers not joining regular service or transferring to another Force	3	0	2	0	0	5
Number of officers completing 16 hours or more of duty per month	89	114	96	4	5	308
% of Officers completing 16 or more hours duty per month	62%	60%	65%	67%	100%	63%

Gender	Western	Eastern	Northern	RPU	CS/CQ	Force
Male	104	130	108	6	5	353
Female	39	60	40	0	0	139

Ethnicity	Western	Eastern	Northern	RPU	CS/CQ	Force
White	131	185	142	6	5	469
White Irish / Other	1	0	5	0	0	6
Mixed	5	0	1	0	0	4
Black or black British	2	0	2	0	0	4
Asian or asian British	1	1	2	0	0	4
Chinese or other	2	1	1	0	0	4
Undeclared	1	0	0	0	0	1

Age	Western	Eastern	Northern	RPU	CS/CQ	Force
25 and under	63	99	44	0	0	206
26 to 40	67	61	65	2	2	197
41 to 55	14	23	28	3	1	69
Over 55	0	7	10	1	2	20

Length of service	Western	Eastern	Northern	RPU	CS/CQ	Force
up to 1 year	45	54	45	0	0	144
1yr to 5 years	81	108	59	0	1	249
5 to 10 years	13	15	22	1	0	51
10 to 15 years	0	6	11	3	1	21
15 to 20 years	0	3	10	2	1	16
20 to 25 years	3	2	0	0	1	6
25 years and over	1	2	1	0	1	5
Number of joiners	0	1	0	N/A	N/A	1

Note: RPU - Roads Policing Unit CS/CQ - Central Support Departments

Force target areas making the most of our resources

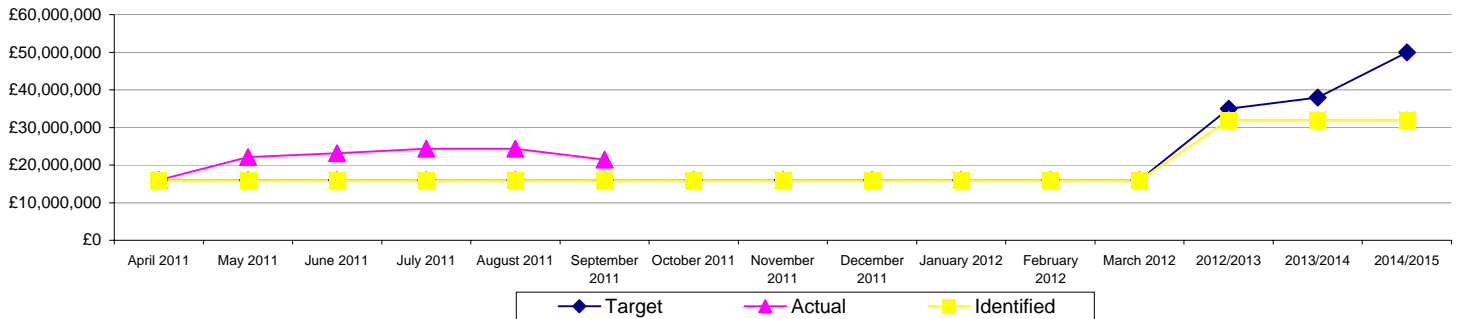
Finance

	Savings		
	Target	Actual	Identified
April 2011	£16,000,000	£16,000,000	£16,000,000
May 2011	£16,000,000	£22,155,000	£16,000,000
June 2011	£16,000,000	£23,164,000	£16,000,000
July 2011	£16,000,000	£24,309,000	£16,000,000
August 2011	£16,000,000	£24,337,000	£16,000,000
September 2011	£16,000,000	£21,424,000	£16,000,000
October 2011	£16,000,000		£16,000,000
November 2011	£16,000,000		£16,000,000
December 2011	£16,000,000		£16,000,000
January 2012	£16,000,000		£16,000,000
February 2012	£16,000,000		£16,000,000
March 2012	£16,000,000		£16,000,000
2012/2013	£35,000,000		£32,000,000
2013/2014	£38,000,000		£32,000,000
2014/2015	£50,000,000		£32,000,000
Total	£50,000,000		£44,500,000

National position for value for money
7 of 41

Note: National position excludes Metropolitan Police and City of London Police

Savings



The savings chart shows:

- Savings target - across all four years i.e. cumulatively this is £16m, £35m, £38m, £50m
- Savings actual - this is the base budget reduction +/- the in year projected over/underspend
- Savings identified - this is helpful to see the value of savings identified

The combination of data shows how much savings have been identified against the savings targets. It also shows how much is being saved against target

Note:

- If the pink line (actual) is above the blue line (target) then we are underspending in year (saving more than the savings target)
- The yellow line (savings identified) needs to reach the blue line (target) in order to identify sufficient savings to meet the target
- On 12 September 2011, the Finance Committee approved £3.777m of contributions to reserves which reduces actual savings from September

Protecting the frontline

The number of full time equivalents (FTE) undertaking response policing, neighbourhood policing and local crime investigation will be protected at a minimum of 2224 on average per month throughout 2011-2012

Frontline Staff	Target	Average
October 2011	2224	2223