



Performance Summary January 2009

Summary

This document contains a strategic overview of the Constabulary's performance. It has a variety of performance measures within it, but for the first time our performance is aligned to the Force Control Strategy.

It is a headline document that will enable our customers, both internally and externally, to easily assess performance in key domains. Additionally with the introduction of the national performance framework called the Assessment of Police and Community Safety (APACS), it is crucial that we become focused and more accountable.

At the front of the document there are several matrices that reflect our performance against our targets, firstly year to date and secondly relevant for that particular month.

Performance in key areas is then explored in more depth with an indication of where each measure has originated - for example, APACS Statutory Performance Indicator (SPI) or a Force Control Strategy (FCS) measure.

This document is then taken forward by key stakeholders within the organisation to the Force Performance Review Group, where it is used to highlight areas of both best practice and those for development.

This is an evolving document and as such, the content may alter over time and any feedback would be welcomed by the Performance Review Team.

Index

Page

Year to date performance matrix

4-5

Monthly performance matrix

6-7

including notes on matrices terminology

Safer neighbourhoods

8	Overall satisfaction	SPI 1.1	FCS	Consultation & Research Team
8	Being kept informed		FCS	Consultation & Research Team
8	Comparative satisfaction of minority ethnic groups	SPI 1.2		Consultation & Research Team
8	Satisfaction of victims of racist incidents	SPI 1.3		Consultation & Research Team
8	Confidence in local police	SPI 2.3	FCS	iQuanta - Quarterly
8	Understanding community issues		FCS	iQuanta - Quarterly
8	Perception of anti-social behaviour	SPI 4.1		iQuanta - Quarterly
8	Perception of drug use in local area	SPI 4.3	FCS	iQuanta - Quarterly
8	Perception of drunk or rowdy behaviour	SPI 4.2		iQuanta - Quarterly
9	Assault with less serious injury	SPI 5.3	FCS	Business Objects
10	Successful neighbourhood priorities		FCS	Neighbourhood Policing Lead - ACC 'TO' Dept
10	Anti-social use of motor vehicle (NSIR)		FCS	PRT - NSIR Return
10	Anti-social behaviour (NSIR)		FCS	PRT - NSIR Return
11	Criminal damage		FCS	Business Objects

Safeguard people

12	DV incident arrest rate		FCS	Business Objects
12	DV victimisation		FCS	N/A
12	Repeat victims of domestic violence		FCS	Business Objects
12	Domestic violence OBTJ rate		FCS	Criminal Justice Department
12	Hate crime detection rate		FCS	Business Objects
12	Sexual offender reoffending rate		FCS	N/A

Protect our communities

13	Road traffic casualties	SPI 9.1	FCS	8 OCU Performance Team
----	-------------------------	---------	-----	------------------------

Prevent, reduce and detect crime

14	Serious violent crime and sanction detections	SPI 5.1	FCS	Business Objects
15	All crime		FCS	Business Objects
16	Serious acquisitive crime and sanction detections	SPI 5.2	FCS	Business Objects
17	Serious acquisitive crime breakdown			
18	Gun crime rate	SPI 5.5		Business Objects and Manual Checking
18	Knife crime rate	SPI 5.6		Business Objects and Manual Checking
18	Serious sexual crime OBTJ rate	SPI 6.4	FCS	Criminal Justice Department
18	Murder offences		FCS	Business Objects
18	Asset recovery	SPI 8.1	FCS	Specialist Investigation Department
18	PPO convictions	SPI 10.1	FCS	Criminal Justice Department
18	Class A drugs sanction detections		FCS	Business Objects
18	Drug intervention measures (DIMs)			Force Intelligence

Organisational management

19	Police officer sickness	SPI 13.1	FCS	PRT - Delphi + Personnel - Staffing Figures
20	Police staff sickness	SPI 13.2	FCS	PRT - Delphi + Personnel - Staffing Figures
21	Overdue PDRs			Personnel
22	Minority ethnic officer recruitment	SPI 3.1		Personnel
22	Female officer representation	SPI 3.2		Personnel
22	NCRS compliance		FCS	Force Incident & Crime Registrar
22	Budget spend		FCS	Finance
22	Efficiency savings		FCS	Finance

Specialist Operations - 7 OCU

23-24	Murder & domestic murder offences (SPI 5.4), CSI attendance, DNA & fingerprint identifications, forensic examinations major incidents, class A drug detections, kidnaps, abductions, blackmails			
-------	---	--	--	--

Specialist Operations - 8 OCU

25	Patrol availability, pre-planned operations, ANPR operations, interventions in support of OCUs & Force Strategy			
----	---	--	--	--

Operational Services

26	Performance highlights relating to Operational Services departments which include Call Management and Personnel & Training			
----	--	--	--	--

Victim focus

27-28	APACs indicators for user satisfaction, Victim Code compliance, victim support status			
-------	---	--	--	--

Restricted data

29

FCS = Force Control Strategy

PRT = Performance Review Team

SPI - Statutory Performance Indicator

Year to date performance matrix

This matrix is based on year to date comparison with 2007/2008 performance

		Target	Actual	
Safer Neighbourhoods	Overall satisfaction (data for rolling 12 months)	>62.0%	62.0%	
	Being kept informed (data for rolling 12 months)	>60.0%	49.0%	
	Confidence in local police	>58.3%	57.9%	
	Understanding community issues	>67.1%	66.3%	
	Perception of drug use in local area	<23.9%	26.2%	
	Assault with less serious injury*	-5.0%	-1.3%	
	OCU specific targets			
	Successful neighbourhood priorities	>33.0%	Pg 10	
	Anti-social use of motor vehicle	-5.0%	-21.3%	
	Anti-social behaviour	-5.0%	-6.0%	
	Reduce criminal damage	-12.0%	-9.4%	
	Safer Neighbourhoods - targets achieved			3
Safeguard people	Domestic violence incident arrest rate	>35.0%	34.1%	
	Repeat victims of domestic violence	-5.0%	10.5%	
	Hate crime detection rate	>45.0%	37.1%	
Safeguard people - targets achieved			0	
Protect our communities	Road traffic casualties	<470	429	
	Protect our communities - targets achieved		1	

Central	Isle of Wight	North & East	Portsmouth	Southampton	Western	Crime	Operations
63.0%	69.0%	60.0%	62.0%	59.0%	62.0%	N/A	
48.0%	55.0%	47.0%	48.0%	49.0%	49.0%	N/A	
Force level target - to exceed MSG average by 5% whilst not declining on current performance							
Force level target - to exceed MSG average by 3.5% whilst not declining on current performance							
Force level target - be under MSG average whilst not declining on current performance							
-2.4%	1.2%	1.3%	2.2%	-2.8%	-4.2%	N/A	
-5.91%	-4.52%	0.00%	-4.00%	-8.69%	-4.21%	N/A	
Quarterly Data - See Page 10							N/A
-24.0%	-25.2%	-24.7%	-28.0%	-13.2%	-8.7%	N/A	
-8.8%	-7.4%	-1.5%	-8.0%	-1.8%	-9.8%	N/A	
-9.6%	-16.7%	-3.9%	-3.6%	-12.3%	-12.0%	N/A	
3	4	1	3	2	4		
35.3%	34.6%	37.2%	26.6%	29.6%	49.0%	N/A	
-4.1%	17.6%	29.5%	-10.6%	29.0%	18.3%	N/A	
41.6%	39.8%	34.1%	33.3%	37.2%	39.4%	N/A	
1	0	1	1	0	1		
Owned by Operations OCU							429
							1

Year to date performance matrix cont'd

This matrix is based on year to date comparison with 2007/2008 performance

		Target	Actual	
Prevent, reduce and detect crime	Serious violent crime	-6.0%	-5.8%	
	Serious violent crime SD	>50.0%	49.3%	
	All crime*		-3.0%	-2.9%
		OCU specific targets		
	Serious acquisitive crime*		-2.0%	-5.0%
		OCU specific targets		
	Serious acquisitive crime SD	>15.0%	10.1%	
	Murder offences	<13	9	
	Asset recovery (shown in £1000s)	£3,465.6	£753.8	
Class A drugs SD	>335	324		
Prevent, reduce and detect crime - targets achieved			2	
Organisational management	Police officer sickness	<6.25	6.63	
	Police staff sickness	<6.25	7.31	
	NCRS compliance	Good	N/A	
		90.0%		
	Budget spend	<75%	74%	
	Efficiency savings	>£10m	£2.44m	
Organisational management - targets achieved			1	
Force Total - targets achieved			7	

Central	Isle of Wight	North & East	Portsmouth	Southampton	Western	Crime	Operations
5.4%	-19.7%	-15.6%	-9.9%	-9.5%	22.2%	N/A	
55.1%	67.9%	59.3%	40.0%	41.0%	50.0%	N/A	
-1.8%	-7.5%	0.2%	-1.9%	-5.3%	-3.4%	N/A	
-2.34%	-2.35%	-1.50%	-1.50%	-4.35%	-5.25%	N/A	
-3.0%	-8.8%	-1.7%	4.5%	-9.0%	-12.3%	N/A	
-1.39%	-2.11%	-2.38%	-1.36%	-2.27%	-2.48%	N/A	
12.0%	13.9%	8.3%	10.5%	9.2%	10.2%	N/A	
Owned by Crime OCU						9	Owned by Crime OCU
This is a Force measure							
Owned by Crime OCU						324	Owned by Crime OCU
2	4	2	2	3	2	1	
6.29	7.24	4.72	8.24	6.96	7.86	5.56	6.87
8.13	8.62	6.33	9.40	7.41	7.01	6.85	4.48
Fair	Fair	Fair	Poor	Poor	Fair	No data	N/A
82%	82%	84%	72%	64%	85%	No data	
74%	74%	77%	76%	73%	78%	71%	77%
This is a Force measure							
1	1	1	0	1	0	2	1
7	9	5	6	6	7	3	2

Note: Some areas contained within the Force Control Strategy and Force Target documents do not yet appear in the above matrix. This is because, to date, it has not been possible to establish sufficient baseline data to set a target. Work is ongoing in these areas to establish a baseline. Information in relation to our progress within these areas is contained within the detailed sections of the profile.

Monthly performance matrix

This matrix is based on monthly data compared to force target

		Target	Actual	Central	Isle of Wight	North & East	Portsmouth	Southampton	Western	Crime	Operations	
Safer Neighbourhoods	Assault with less serious injury*	<1163	1077	207	49	188	214	281	138	N/A		
	OCU specific targets			246.0	79.0	204.9	163.1	284.5	185.6	N/A		
	Anti-social use of motor vehicle		<1457	728	152	44	127	62	160	153	N/A	
		OCU specific targets			312.5	97.7	278.4	143.6	260.7	288.9	N/A	
	Anti-social behaviour		<8105	5956	1176	411	1029	908	1378	945	N/A	
		OCU specific targets			1702.0	594.2	1391.2	1268.4	1730.4	1288.1	N/A	
Reduce criminal damage		<2908	2682	617	171	480	369	603	442	N/A		
	OCU specific targets			635.5	228.1	523.9	362.1	620.4	537.9	N/A		
Safer Neighbourhoods - targets achieved			4	4	4	4	2	4	4			
Safeguard people	Domestic violent incident arrest rate	> 35.0%	33.7%	36.8%	29.7%	35.0%	29.6%	30.8%	41.4%	N/A		
	Hate crime detection rate	>45.0%	54.0%	92.9%	100.0%	39.1%	55.6%	55.4%	31.3%	N/A		
Safeguard people - targets achieved			1	2	1	1	1	1	1			
Protect our communities - targets achieved												
Prevent, reduce and detect crime	Serious violent crime		<75	80	12	6	13	22	17	10	N/A	
		OCU specific targets			13.0	7.0	12.6	14.4	21.1	6.6	N/A	
	Serious violent crime SD		>50.0%	40.0%	66.7%	33.3%	46.2%	27.3%	35.3%	40.0%	N/A	
	All crime*		<13588	12599	2648	675	2427	2087	2752	2010	N/A	
		OCU specific targets			2779.3	939.4	2551.9	2104.9	2871.8	2341.1	N/A	
	Serious acquisitive crime*		<1900	1849	411	78	385	365	356	254	N/A	
		OCU specific targets			336.3	80.7	371.6	311.7	422.7	377.4	N/A	
	Serious acquisitive crime SD		>15.0%	10.0%	12.2%	9.0%	4.7%	7.9%	9.6%	18.1%	N/A	
Asset recovery		£344,483	£8,150	This is Force measure								
Class A drugs SD		>33	36	Owned by Crime OCU							36	Owned by Crime OCU
Prevent, reduce and detect crime - targets achieved			3	3	3	1	1	3	3	1		
Organisational management	Police officer sickness	<0.63	0.86	0.59	1.00	0.69	1.08	1.09	0.95	0.52	1.29	
	Police staff sickness	<0.63	0.93	0.56	0.97	0.60	1.10	0.92	0.82	1.08	0.52	
Organisational management - targets achieved			0	2	0	1	0	0	0	1	1	
Force Total - targets achieved			8	11	8	7	4	8	8	2	1	

Note: Some areas contained within the Force Control Strategy and Force Target documents do not yet appear in the above matrix. This is because, to date, it has not been possible to establish sufficient baseline data to set a target. Work is on going in these areas to establish a baseline. Information in relation to our progress within these areas is contained within the detailed sections of this document.

Notes to be read in conjunction with matrices

All citizen focus data	Based on "completely or very satisfied"
OBTJ	Offenders Brought To Justice
Road traffic casualties	All data until 30 September 2008
Budget spend	Data is always one month in arrears
Efficiency savings	3 year target of £30m, notionally £10m per year
SD	Sanction detections
Anti-social use of motor vehicle & behaviour	Data is obtained from NSIR and always 1 month in arrears
Sickness data	Force Actual = total for ALL officers/police staff - including those not in OCU
OCU specific targets	OCU specific targets are rounded to 1 decimal place, the actual figure may therefore seem the same but appear red due to this rounding
Asset recovery	Asset recovery is the sum total of the values of cash forfeitures and confiscation orders
* = variable targets across OCUs for these target areas based on previous performance and MSG position	

Safer neighbourhoods

Overall satisfaction

Rolling 12 months data relates to: Feb 08 - Jan 09; rolling 3 months data relates to Nov 08 - Jan 09
Overall satisfaction includes burglary, vehicle crime, violent crime and RTCs

Target 62%	Central	Isle of Wight	North & East	Portsmouth	Southampton	Western	Force	No. Surveys
Rolling 12 months	63%	69%	60%	62%	59%	62%	62%	8212
Rolling 3 months	68%	75%	61%	68%	64%	63%	66%	1716

Being kept informed

Rolling 12 months data relates to: Feb 08 - Jan 09; rolling 3 months data relates to Nov 08 - Jan 09
Being kept informed includes burglary, vehicle crime, violent crime and RTCs

Target 60%	Central	Isle of Wight	North & East	Portsmouth	Southampton	Western	Force	No. Surveys
Rolling 12 months	48%	55%	47%	48%	49%	49%	49%	7963
Rolling 3 months	57%	66%	52%	56%	55%	56%	56%	1665

Comparative satisfaction of minority ethnic groups

Data relates to interviews which took place Feb 08 - Jan 09
These figures are for overall satisfaction for burglary, vehicle crime, violent crime & RTCs; it excludes racist incidents

	Completely and very satisfied	Completely, very and fairly satisfied
White	62.4%	82.4%
Minority Ethnic	53.2%	78.2%

Satisfaction of victims of racist incidents

These figures relate to interviews which took place Jan 08 - Dec 08; these will be updated quarterly
Racist incident overall satisfaction = % completely or very satisfied

	Central	Isle of Wight	North & East	Portsmouth	Southampton	Western	Force
%	73%	40%	60%	57%	56%	71%	62%
Number of surveys	26	5	30	28	43	24	156

British Crime Survey data

This data is updated by iQuanta approximately every quarter.

Data up to and including year ending September 2008	Confidence in local police		Understanding community issues		Targets MSG = Most Similar Group	
Avon & Somerset	47.7%		63.6%		Confidence in local police To exceed MSG by 5% whilst maintaining performance	
Bedfordshire	50.9%		60.4%			
Essex	55.0%		64.4%			
Hampshire	57.9%	2nd in MSG	66.3%	2nd in MSG	Understanding community issues To exceed MSG by 3.5% whilst maintaining performance	
Hertfordshire	58.6%		67.5%			
Kent	49.4%		59.9%			
Sussex	51.9%		61.7%		Perception of drug use To be under MSG whilst maintaining performance	
Thames Valley	54.9%		64.7%			
MSG	53.3%		63.6%			

Data up to and including year ending September 2008	Perception of anti-social behaviour		Perception of drug use		Perception of drunk or rowdy behaviour	
Avon & Somerset	13.7%		23.4%		24.6%	
Bedfordshire	18.7%		30.1%		22.4%	
Essex	11.8%		18.6%		22.5%	
Hampshire	19.2%	8th in MSG	26.2%	6th in MSG	32.6%	8th in MSG
Hertfordshire	13.8%		22.7%		26.2%	
Kent	16.3%		23.0%		25.0%	
Sussex	11.4%		20.8%		20.3%	
Thames Valley	14.6%		26.5%		22.5%	
MSG	14.9%		23.9%		24.5%	

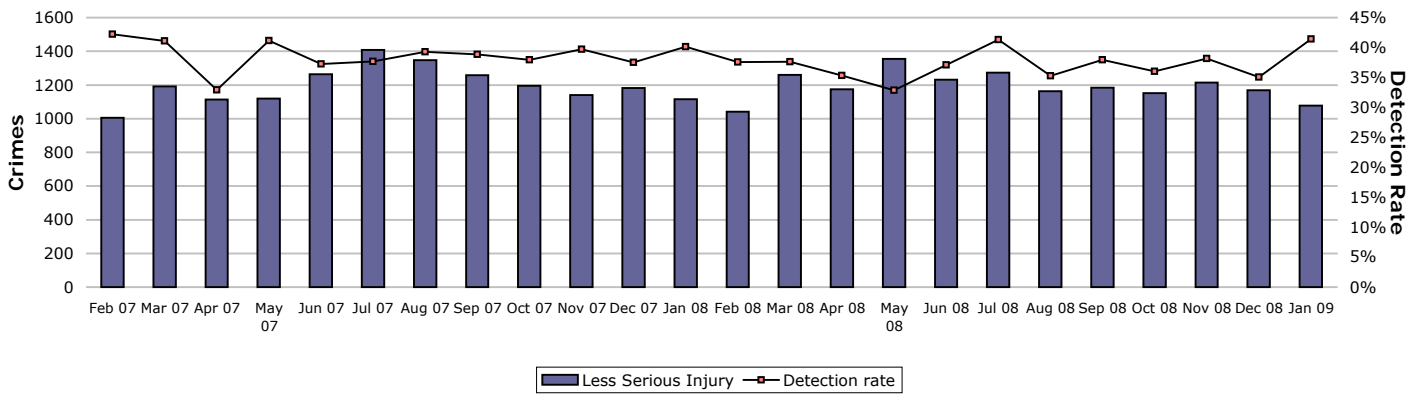
The target for the three areas below is not to decline against previous performance

	Dec 2007	Mar 2008	Jun 2008	Sep 2008	Dec 2008
Confidence in local police	57.4%	57.4%	57.9%	57.9%	
Understanding community issues	64.2%	65.5%	66.8%	66.3%	
Perception of drug use	23.0%	23.0%	26.4%	26.2%	

Safer neighbourhoods

Assault with less serious injury

Assault with less serious injury consists of crimsec codes 8G and 8J



Crimes	Central	Isle of Wight	North & East	Portsmouth	Southampton	Western	Force
YTD Crimes	2482	849	2036	1799	2989	1836	11991
YTD Target	2427	780	2022	1609	2808	1832	11478
YTD 07/08 Crimes	2544	839	2009	1761	3076	1917	12146
This month	207	49	188	214	281	138	1077
% change from 07/08	-2.44%	1.19%	1.34%	2.16%	-2.83%	-4.23%	-1.28%
MSG position	15 of 15	13 of 15	13 of 15	8 of 9	7 of 15	8 of 15	8 of 8



Detections	Central	Isle of Wight	North & East	Portsmouth	Southampton	Western	Force
YTD Detection Rate	34.37%	42.05%	37.92%	31.07%	36.70%	43.46%	36.99%
This month	45.41%	48.98%	45.74%	34.11%	36.30%	48.55%	41.41%
YTD 07/08 Detections	38.68%	45.29%	41.31%	32.31%	35.27%	41.63%	38.25%
MSG position	15 of 15	10 of 15	12 of 15	7 of 9	9 of 15	8 of 15	7 of 8

Note: Detections refer to Sanction Detections ONLY



Safer neighbourhoods

Successful neighbourhood priorities

Data provided up to Sept 08

Target = 33%	Central	Isle of Wight	North & East	Portsmouth	Southampton	Western	Force
Number of neighbourhoods	59	20	64	16	22	63	244
Number of priorities achieved	13	1	21	2	3	21	61
% of priorities achieved	22.0%	5.0%	32.8%	12.5%	13.6%	33.3%	25.0%

This data shows the number of neighbourhood priorities that have, over the last quarter, been successfully achieved. It should be remembered that limited value should be placed on this measure as it does not necessarily reflect community satisfaction with the police activity in support of the priorities. Work is still ongoing to capture this satisfaction level.

Anti-social use of motor vehicle

Data to be provided a month in arrears. It is gathered using Altaris closing codes as the primary data source, then RMS as the secondary data source to gather incidents not recorded within Altaris.

The Force total does not add up to the sum of OCUs, this is due to Altaris incident logs which do not contain a geographic location.

	Central	Isle of Wight	North & East	Portsmouth	Southampton	Western	Force
YTD Apr 08 to Dec 08	2327	676	2010	1001	2174	2494	11081
YTD Apr 07 to Dec 07	3063	904	2670	1391	2504	2732	14080
December	152	44	127	62	160	153	728
YTD Target	2772.6	866.4	2469.7	1274.0	2312.3	2563.2	12924.2
% v target	-16.1%	-22.0%	-18.6%	-21.4%	-6.0%	-2.7%	-14.3%
% change from 07/08	-24.0%	-25.2%	-24.7%	-28.0%	-13.2%	-8.7%	-21.3%

Anti-social use of motor vehicle - relates to NSIR category Vehicle Nuisance/Inappropriate Use within the Anti-Social Behaviour Grouping

Anti-social behaviour

Data to be provided a month in arrears. It is gathered using Altaris closing codes as the primary data source, then RMS as the secondary data source to gather incidents not recorded within Altaris.

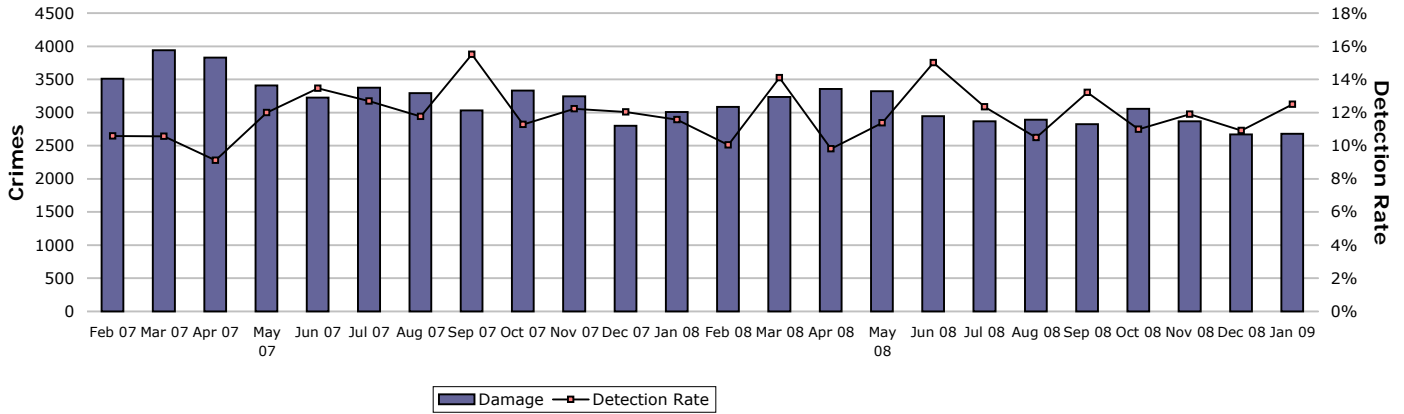
The Force total does not add up to the sum of OCUs, this is due to Altaris incident logs which do not contain a geographic location.

	Central	Isle of Wight	North & East	Portsmouth	Southampton	Western	Force
YTD Apr 08 to Dec 08	15059	5397	13244	11277	16502	11287	73914
YTD Apr 07 to Dec 07	16509	5831	13443	12252	16803	12516	78636
December	1176	411	1029	908	1378	945	5956
YTD Target	15098.6	5271.0	12341.1	11251.6	15350.3	11426.4	71896.3
% v target	-0.3%	2.4%	7.3%	0.2%	7.5%	-1.2%	2.8%
% change from 07/08	-8.8%	-7.4%	-1.5%	-8.0%	-1.8%	-9.8%	-6.0%

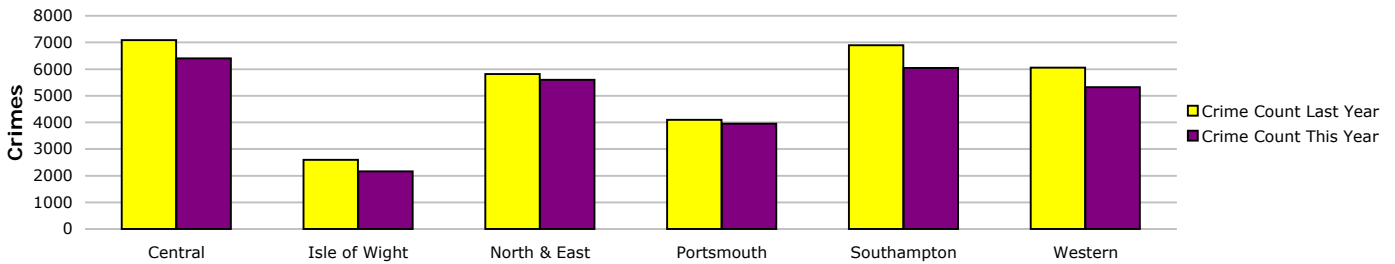
Anti-social behaviour - relates to NSIR categories Environmental Damage/Littering, Rowdy & Inconsiderate and Neighbours within the Anti-Social Behaviour Grouping

Safer neighbourhoods

Criminal damage

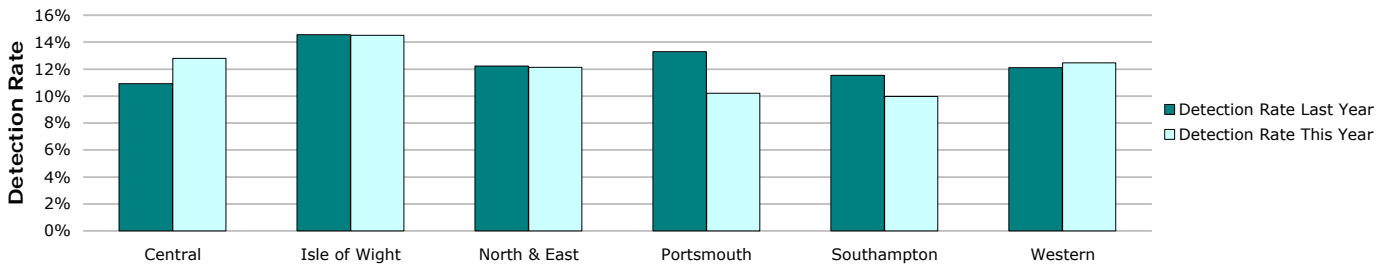


Crimes	Central	Isle of Wight	North & East	Portsmouth	Southampton	Western	Force
YTD Crimes	6402	2157	5594	3956	6047	5326	29482
YTD Target	6273	2252	5170	3574	6124	5309	28701
YTD 07/08 Crimes	7085	2590	5819	4102	6896	6052	32544
This month	617	171	480	369	603	442	2682
% change from 07/08	-9.64%	-16.72%	-3.87%	-3.56%	-12.31%	-12.00%	-9.41%
MSG position	14 of 15	10 of 15	13 of 15	7 of 9	12 of 15	6 of 15	8 of 8



Detections	Central	Isle of Wight	North & East	Portsmouth	Southampton	Western	Force
YTD Detection Rate	12.79%	14.51%	12.14%	10.21%	9.97%	12.47%	11.81%
This month	14.10%	11.11%	14.17%	12.47%	10.12%	12.22%	12.49%
YTD 07/08 Detections	10.92%	14.56%	12.22%	13.29%	11.54%	12.10%	12.09%
MSG position	10 of 15	8 of 15	13 of 15	8 of 9	14 of 15	10 of 15	8 of 8

Note: Detections refer to Sanction Detections ONLY



Safeguard people

Domestic violence is defined by ACPO as: 'any incidence of threatening behaviour, violence or abuse (psychological, physical, sexual, financial or emotional) between adults, aged 18 and over, who are or have been intimate partners or family members, regardless of gender or sexuality'

Domestic violence incident arrest rate

Domestic violence arrest rate is based on records where the occurrence has been flagged as a domestic, and has an arrest event or a linked person reason of arrested. This measure looks at all domestic incidents (not only crimes)

Target >35%

Year to Date	Central	Isle of Wight	North & East	Portsmouth	Southampton	Western	Force
Domestic Incidents	4043	1328	3028	3331	4108	2002	17840
Domestic Incident Arrests	1427	460	1125	886	1214	980	6092
Domestic Incident Arrest Rate	35.30%	34.64%	37.15%	26.60%	29.55%	48.95%	34.15%

Month	Central	Isle of Wight	North & East	Portsmouth	Southampton	Western	Force
Domestic Incidents	372	138	277	304	413	186	1690
Domestic Incident Arrests	137	41	97	90	127	77	569
Domestic Incident Arrest Rate	36.83%	29.71%	35.02%	29.61%	30.75%	41.40%	33.67%

Domestic violence crime arrest rate

Year to Date	Central	Isle of Wight	North & East	Portsmouth	Southampton	Western	Force
Domestic Crimes	1764	527	1303	1085	1566	1127	7372
Domestic Crime Arrests	1319	406	1050	824	1099	918	5616
Domestic Crime Arrest Rate	74.77%	77.04%	80.58%	75.94%	70.18%	81.46%	76.18%

Month	Central	Isle of Wight	North & East	Portsmouth	Southampton	Western	Force
Domestic Crimes	197	52	128	120	187	103	787
Domestic Crime Arrests	144	35	94	90	122	77	562
Domestic Crime Arrest Rate	73.10%	67.31%	73.44%	75.00%	65.24%	74.76%	71.41%

Domestic violence victimisation

Placeholder - this measure was a joint APACS & National Indicator set measure looking at the work of MARACS. It was dropped from the 2008/09 APACS guidance, however is expected to be included in the 09/10 guidance, at which time technical guidance will be published to enable reporting

Repeat victims of domestic violence

	Central	Isle of Wight	North & East	Portsmouth	Southampton	Western	Force
YTD All Domestic Violence	4043	1328	3028	3331	4108	2002	17840
YTD 07/08 All Domestic Violence	3568	1218	2503	3255	3691	2173	16408
YTD Repeat Victims	1652	569	929	1780	1694	749	7373
YTD 07/08 Repeat Victims	1451	476	728	1639	1037	740	6071
YTD % Repeat Victims	40.9%	42.8%	30.7%	53.4%	41.2%	37.4%	41.3%
YTD 07/08% Repeat Victims	40.7%	39.1%	29.1%	50.4%	28.1%	34.1%	37.0%

Crimes - Target -5% in repeat victims

	Central	Isle of Wight	North & East	Portsmouth	Southampton	Western	Force
YTD All Domestic Violence	1764	527	1303	1085	1566	1127	7372
YTD 07/08 All Domestic Violence	1707	520	1168	1165	1483	1087	7130
YTD Repeat Victims	423	127	290	303	480	252	1875
YTD 07/08 Repeat Victims	441	108	224	339	372	213	1697
YTD % Repeat Victims	24.0%	24.1%	22.3%	27.9%	30.7%	22.4%	25.4%
YTD 07/08% Repeat Victims	25.8%	20.8%	19.2%	29.1%	25.1%	19.6%	23.8%
% change in repeat victims from 07/08	-4.1%	17.6%	29.5%	-10.6%	29.0%	18.3%	10.5%

Note: Crimes are a subset of the incident data. This data reflects ALL crime types, and is not restricted to 'violent' offences

Crimes - This month	Central	Isle of Wight	North & East	Portsmouth	Southampton	Western	Force
This month All Domestic Violence	197	52	128	120	187	103	787
This month Repeat Victims	46	14	22	32	56	28	198
This month % Repeat Victims	23.4%	26.9%	17.2%	26.7%	29.9%	27.2%	25.2%

Domestic Violence (DV) OBTJ rate

The Tier 3 "other offences" measure includes the DV OBTJ rate which currently cannot be individually extracted. The table below shows the percentage of persons brought to justice for "other offences" including domestic violence incidents against the total number of DV incidents.

OBTJ Crime category	Apr 2008	May 2008	Jun 2008	Jul 2008	Aug 2008	Sep 2008	Oct 2008	Rolling average
Tier 3: Other Offences	29%	24%	26%	32%	26%	28%	20%	28%

Hate crime detection rate

Target >45%

Year to Date	Central	Isle of Wight	North & East	Portsmouth	Southampton	Western	Force
Incidents	413	115	407	440	812	314	2501
Crimes	219	83	252	282	497	226	1559
Detections	91	33	86	94	185	89	578
Detection Rate	41.55%	39.76%	34.13%	33.33%	37.22%	39.38%	37.08%

Month	Central	Isle of Wight	North & East	Portsmouth	Southampton	Western	Force
Incidents	23	3	21	28	86	25	186
Crimes	14	1	23	18	65	16	137
Detections	13	1	9	10	36	5	74
Detection Rate	92.86%	100.00%	39.13%	55.56%	55.38%	31.25%	54.01%

Sexual offender reoffending rate

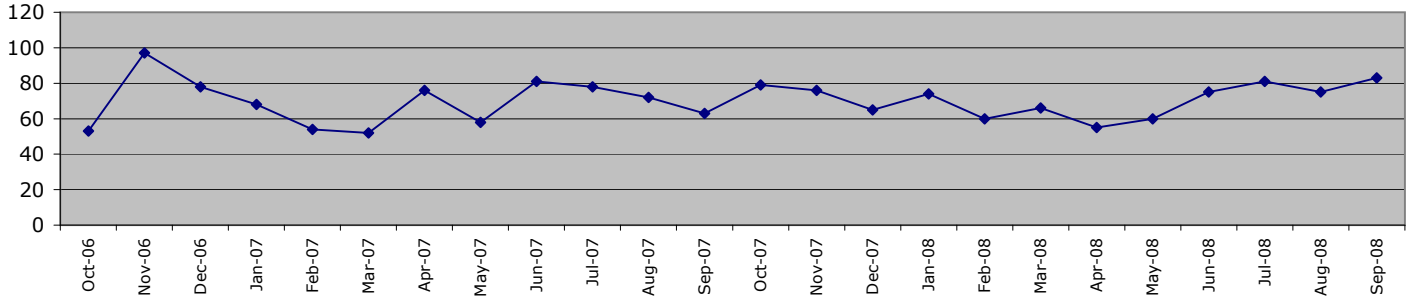
This indicator was contained within the draft APACS/National Indicator Set measures, however following national consultation this was removed from both sets. Hampshire has not yet identified how this target will be measured in the absence of technical guidance.

Protect our communities

Road traffic casualties

Note: Casualty data is now available to Operations OCU, however, the data is not in a format which enables it to be published in this Summary

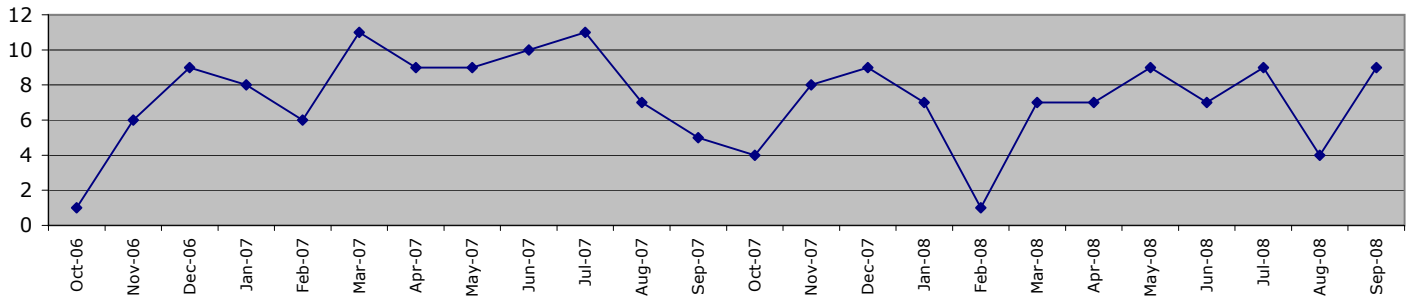
Fatal/serious injury casualties - all victims



The Force target 2008/2009 is for less than 938 casualties, which equates to less than 470 in 183 days YTD Sept 2008 = 429 casualties

	Central	Isle of Wight	North&East	Portsmouth	Southampton	Western	Force
1 April 2008 - 30 September 2008	81	48	91	50	44	115	429
of these, fatalities were	8	5	3	4	2	15	37
1 April 2007 - 30 September 2007	116	35	93	35	29	120	428

Fatal/serious injury casualties - victims under 16 years



The DETR target is for a 50% reduction in child casualties by 2010 from 164 to 82 (Target 2008/2009 = 94)

	Central	Isle of Wight	North&East	Portsmouth	Southampton	Western	Force
1 April 2008 - 30 September 2008	8	7	8	6	8	8	45
of these, fatalities were	0	0	0	0	0	2	2
1 April 2007 - 30 September 2007	11	4	8	14	4	10	51

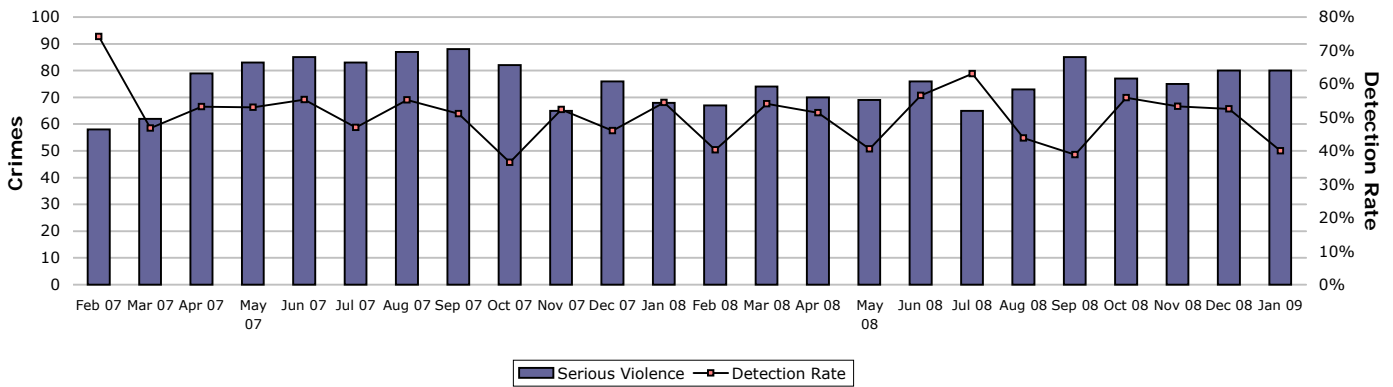
Note: YTD numbers may change as the accident record data are updated each month

Note: The casualties in East Hampshire have all been attributed to North & East OCU in the absence of a breakdown by OCUs

Prevent, reduce and detect crime

Serious violent crime

Serious violent crime consists of crimsec codes 1, 2, 4.1-4.4, 4.6, 4.8, 5A, 5B, 5C, 8F, 8H and 37.1

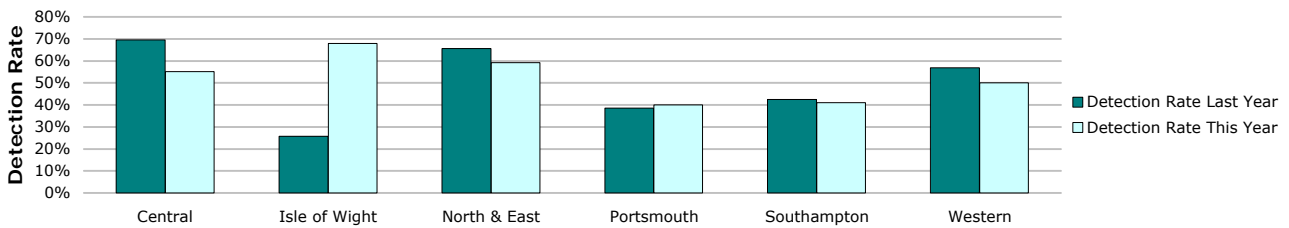


Crimes	Central	Isle of Wight	North & East	Portsmouth	Southampton	Western	Force
YTD Crimes	156	53	108	145	200	88	750
YTD Target	128	69	123	141	208	65	734
YTD 07/08 Crimes	148	66	128	161	221	72	796
This month	12	6	13	22	17	10	80
% change from 07/08	5.41%	-19.70%	-15.63%	-9.94%	-9.50%	22.22%	-5.78%
MSG position	11 of 15	5 of 15	9 of 15	4 of 9	8 of 15	4 of 15	6 of 8



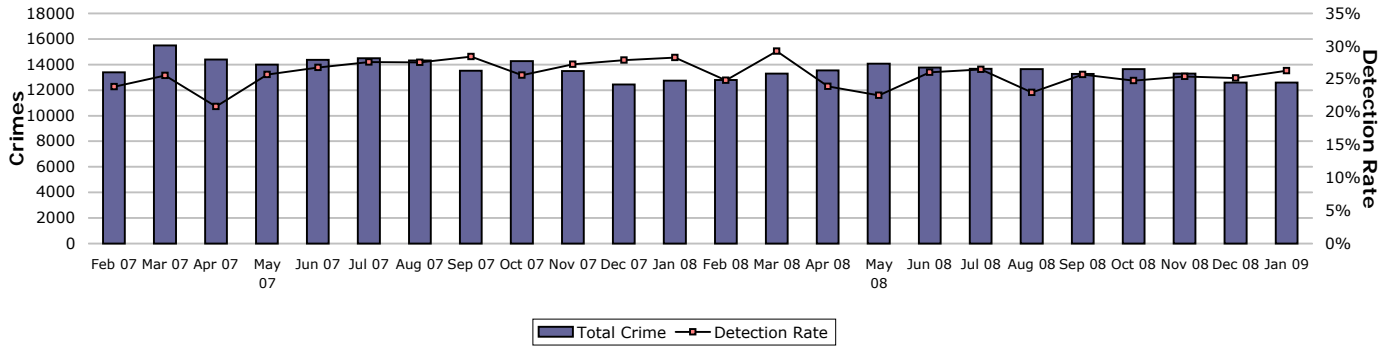
Detections	Central	Isle of Wight	North & East	Portsmouth	Southampton	Western	Force
Target >50%							
YTD Detection Rate	55.13%	67.92%	59.26%	40.00%	41.00%	50.00%	49.33%
This month	66.67%	33.33%	46.15%	27.27%	35.29%	40.00%	40.00%
YTD 07/08 Detections	69.59%	25.76%	65.63%	38.51%	42.53%	56.94%	50.38%
MSG position	6 of 15	2 of 15	5 of 15	2 of 9	7 of 15	5 of 15	2 of 8

Note: Detections refer to Sanction Detections ONLY

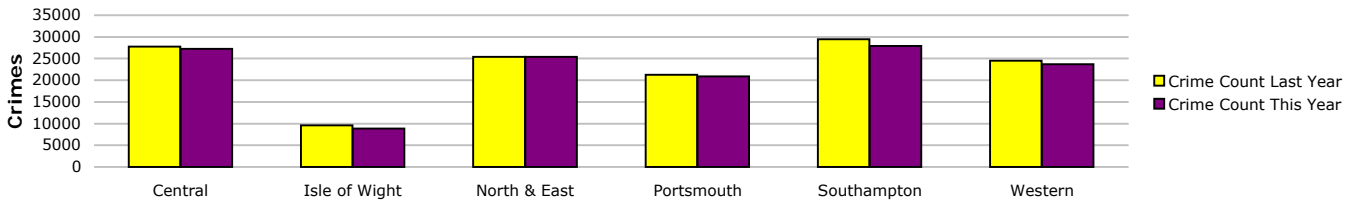


Prevent, reduce and detect crime

All crime

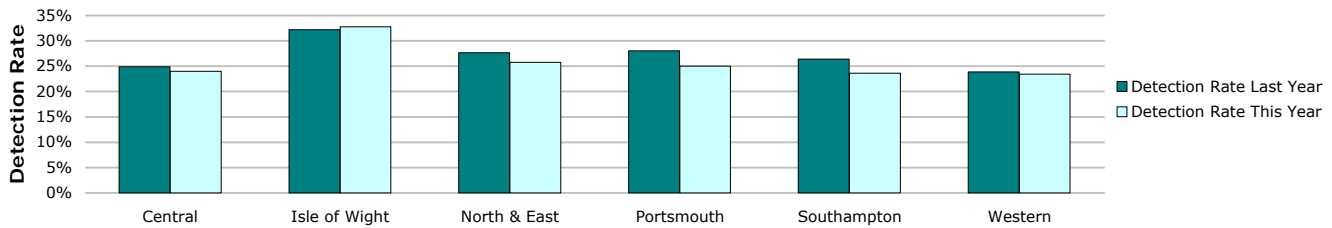


Crimes	Central	Isle of Wight	North & East	Portsmouth	Southampton	Western	Force
YTD Crimes	27252	8872	25431	20894	27931	23704	134084
YTD Target	27434	9273	25188	20777	28347	23109	134128
YTD 07/08 Crimes	27744	9592	25376	21297	29493	24541	138043
This month	2648	675	2427	2087	2752	2010	12599
% change from 07/08	-1.77%	-7.51%	0.22%	-1.89%	-5.30%	-3.41%	-2.87%
MSG position	12 of 15	7 of 15	9 of 15	7 of 9	13 of 15	9 of 15	6 of 8



Detections	Central	Isle of Wight	North & East	Portsmouth	Southampton	Western	Force
Target >25%							
YTD Detection Rate	23.99%	32.81%	25.79%	25.00%	23.66%	23.44%	24.91%
This month	23.45%	30.07%	26.37%	29.28%	25.07%	27.26%	26.30%
YTD 07/08 Detections	24.90%	32.21%	27.64%	28.06%	26.42%	23.88%	26.54%
MSG position	13 of 15	4 of 15	11 of 15	6 of 9	12 of 15	15 of 15	8 of 8

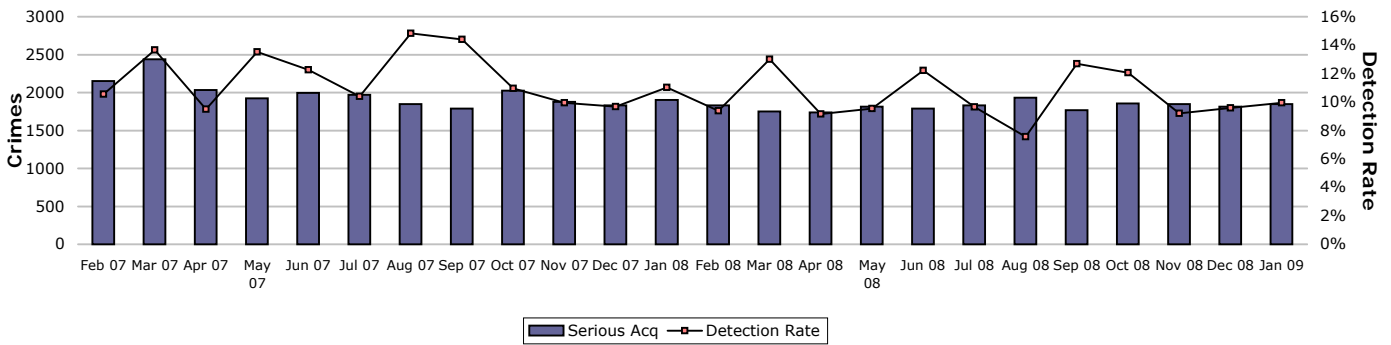
Note: Detections refer to Sanction Detections ONLY



Prevent, reduce and detect crime

Serious acquisitive crime

Serious acquisitive crime consists of crimsec codes 28, 29, 34A, 34B, 37/2, 45 and 48

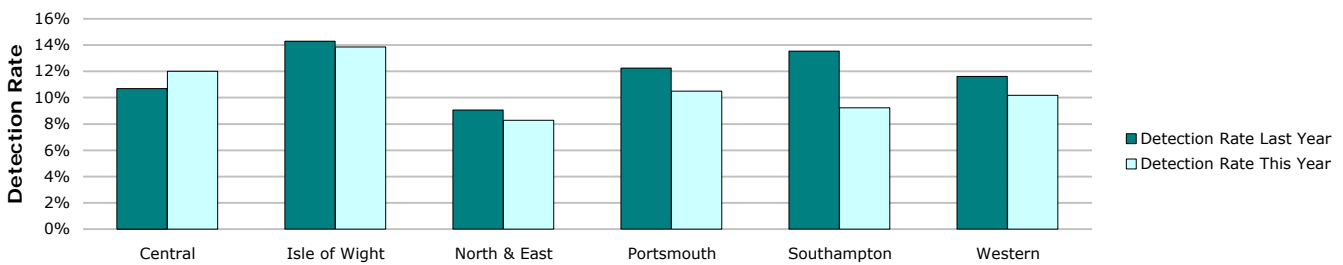


Crimes	Central	Isle of Wight	North & East	Portsmouth	Southampton	Western	Force
YTD Crimes	3259	765	3579	3351	3872	3416	18242
YTD Target	3319	796	3667	3077	4172	3725	18757
YTD 07/08 Crimes	3359	839	3642	3207	4256	3897	19200
This month	411	78	385	365	356	254	1849
% change from 07/08	-2.98%	-8.82%	-1.73%	4.49%	-9.02%	-12.34%	-4.99%
MSG position	3 of 15	2 of 15	7 of 15	5 of 9	3 of 15	6 of 15	2 of 8



Detections	Central	Isle of Wight	North & East	Portsmouth	Southampton	Western	Force
Target >15%							
YTD Detection Rate	12.00%	13.86%	8.27%	10.50%	9.22%	10.19%	10.14%
This month	12.17%	8.97%	4.68%	7.95%	9.55%	18.11%	9.95%
YTD 07/08 Detections	10.69%	14.30%	9.06%	12.25%	13.53%	11.62%	11.62%
MSG position	10 of 15	6 of 15	14 of 15	5 of 9	11 of 15	11 of 15	6 of 8

Note: Detections refer to Sanction Detections ONLY



Prevent, reduce and detect crime

Serious acquisitive crime breakdown

Robbery

Year to date	Central	Isle of Wight	North & East	Portsmouth	Southampton	Western	Force
Crimes	95	15	140	192	356	152	950
Trigger point	113	41	123	187	287	125	877
07/08 crimes	118	35	131	189	294	122	889
% change from 07/08	-19.49%	-57.14%	6.87%	1.59%	21.09%	24.59%	6.86%

Detection rate	29.47%	20.00%	18.57%	9.38%	16.01%	31.58%	18.95%
----------------	--------	--------	--------	-------	--------	--------	--------

January 2009	Central	Isle of Wight	North & East	Portsmouth	Southampton	Western	Force
Crimes	17	1	17	17	22	14	88
Detection rate	17.65%	0.00%	11.76%	17.65%	45.45%	42.86%	27.27%

Dwelling burglary

Year to date	Central	Isle of Wight	North & East	Portsmouth	Southampton	Western	Force
Crimes	895	257	1152	1216	772	813	5105
Trigger point	791	228	882	840	813	754	4308
07/08 crimes	798	254	847	881	834	810	4424
% change from 07/08	12.16%	1.18%	36.01%	38.02%	-7.43%	0.37%	15.39%

Detection rate	19.55%	23.35%	12.15%	12.99%	18.26%	17.59%	16.00%
----------------	--------	--------	--------	--------	--------	--------	--------

January 2009	Central	Isle of Wight	North & East	Portsmouth	Southampton	Western	Force
Crimes	104	20	101	149	91	73	538
Detection rate	28.85%	15.00%	6.93%	10.07%	8.79%	21.92%	14.68%

Vehicle crime

Year to date	Central	Isle of Wight	North & East	Portsmouth	Southampton	Western	Force
Crimes	2269	493	2287	1943	2744	2451	12187
Trigger point	2415	528	2660	2049	3072	2845	13568
07/08 crimes	2443	550	2664	2137	3128	2965	13887
% change from 07/08	-7.12%	-10.36%	-14.15%	-9.08%	-12.28%	-17.34%	-12.24%

Detection rate	8.29%	8.72%	5.68%	9.06%	5.79%	6.41%	7.00%
----------------	-------	-------	-------	-------	-------	-------	-------

January 2009	Central	Isle of Wight	North & East	Portsmouth	Southampton	Western	Force
Crimes	290	57	267	199	243	167	1223
Detection rate	5.86%	7.02%	3.37%	5.53%	6.58%	14.37%	6.62%

Theft of a Motor Vehicle

Year to date	Central	Isle of Wight	North & East	Portsmouth	Southampton	Western	Force
Crimes	490	107	616	448	620	487	2768
Detection rate	20.82%	25.23%	11.85%	24.78%	15.32%	17.25%	17.77%

January 2009	Central	Isle of Wight	North & East	Portsmouth	Southampton	Western	Force
Crimes	68	11	79	41	56	46	301
Detection rate	10.29%	18.18%	7.59%	19.51%	12.50%	13.04%	11.96%

Theft from a Motor Vehicle

Year to date	Central	Isle of Wight	North & East	Portsmouth	Southampton	Western	Force
Crimes	1779	386	1671	1495	2124	1964	9419
Detection rate	4.83%	4.15%	3.41%	4.35%	3.01%	3.72%	3.83%

January 2009	Central	Isle of Wight	North & East	Portsmouth	Southampton	Western	Force
Crimes	222	46	188	158	187	121	922
Detection rate	4.50%	4.35%	1.60%	1.90%	4.81%	14.88%	4.88%

Robbery, burglary and vehicle crime are the component parts of serious acquisitive crime. These individual crime types do not have targets. Trigger points are included here; these add up to the serious acquisitive target and are calculated based on the breakdown of these crimes in 07/08.

Prevent, reduce and detect crime

Gun crime rate

	Central	Isle of Wight	North & East	Portsmouth	Southampton	Western	Force
YTD January 2009	26	3	29	15	20	15	108
YTD January 2008	22	9	26	13	17	17	104
% change from 07/08	18.2%	-66.7%	11.5%	15.4%	17.6%	-11.8%	3.8%

Gun crime figures published reflect the APACS technical definition for 2008/09 which differs from that used in 2007/08. Manual checking has been undertaken to try to provide comparative 2007/08 figures, however it is not possible to provide completed comparable figures. In 2008/09 gun crime includes "where the victim is convinced of the presence of a firearm, even if it is concealed and there is evidence of the suspect's intention to create this impression"; these occurrences were not included in previously published 2007/08 data.

Knife crime rate

	Central	Isle of Wight	North & East	Portsmouth	Southampton	Western	Force
YTD January 2009	121	27	111	99	182	71	611
YTD January 2008	121	31	117	153	177	77	676
% change from 07/08	0.0%	-12.9%	-5.1%	-35.3%	2.8%	-7.8%	-9.6%

Knife = knife or other sharp instrument (including broken glass/bottles) piercing the skin or, for threats and attempts, instruments normally capable of piercing the skin

Knife crime figures published reflect the APACS technical definition for 2008/09 which differs from that used in 2007/08. Manual checking has been undertaken to try to provide comparative 2007/08 figures, however it is not possible to provide completed comparable figures. In 2008/09 knife crime includes "where the victim is convinced of the presence of a knife, even if it is concealed and there is evidence of the suspect's intention to create this impression"; these occurrences were not included in previously published 2007/08 data.

Serious sexual crime OBJT rate

The table below shows % of persons brought to justice for serious sexual crimes against the total number of serious sexual crimes

OBJT Crime category	Apr 2008	May 2008	Jun 2008	Jul 2008	Aug 2008	Sep 2008	Oct 2008	Rolling average
Tier 1: Serious Sexual Offences	36%	14%	53%	36%	35%	46%	37%	38%

Murder offences

2008/2009 target = <16 murder offences

	Central	Isle of Wight	North & East	Portsmouth	Southampton	Western	Force
YTD January 2009	1	1	1	1	3	2	9
YTD January 2008	4	0	3	4	3	2	16
% change from 07/08							-43.8%

For more information, please go to the Specialist Operations - 7 OCU page

Asset recovery

Asset recovery is the sum total of the values of cash forfeitures and confiscation orders

	Central	Isle of Wight	North & East	Portsmouth	Southampton	Western	Force
April 2008	£38,187.90	£0.00	£18,413.50	£0.00	£0.00	£0.00	£56,601.40
May 2008	£0.00	£0.00	£0.00	£0.00	£69,735.00	£0.00	£69,735.00
June 2008	£76,739.37	£0.00	£146,538.50	£0.00	£8,676.00	£4,693.00	£236,646.87
July 2008	£0.00	£0.00	£0.00	£1,104.00	£2,035.00	£2,100.00	£5,239.00
August 2008	£0.00	£0.00	£22,699.60	£0.00	£15,469.55	-£19,520.00	£18,649.15
September 2008	£0.00	£0.00	£1,175.00	£4,447.95	£221,549.03	£21,427.00	£248,598.98
October 2008	£9,273.38	£1,956.76	£60,660.00	£5,400.00	£0.00	£0.00	£77,290.14
November 2008	£0.00	£7,930.00	£1,710.00	£1,250.00	£22,012.77	£0.00	£32,902.77
December 2008	£0.00	£0.00	£0.00	£0.00	£1.00	£0.00	£1.00
January 2009	£0.00	£0.00	£5,000.00	£0.00	£3,150.00	£0.00	£8,150.00
Cumulative total	£124,200.65	£9,886.76	£256,196.60	£12,201.95	£342,628.35	£8,700.00	£753,814.31

Prolific and other Priority Offenders (PPOs) convictions

Number of convictions recorded against identified, prolific and other priority offenders

Convictions	Jul 2008	Aug 2008	Sep 2008	Oct 2008
Persistent Young Offenders	122	No data	74	86
Priority Prolific Offenders	18	No data	20	35
Persistent Priority Prolific Young Offenders	1	No data	2	1
Young Offenders	209	No data	194	156

Note: The August 2008 data is not available due to issues with the Criminal Justice Management Information System (CJMIS)

Note: Due to issues with CJMIS it is not possible to provide more up to date information at this time.

Class A drugs sanction detections

	Central	Isle of Wight	North & East	Portsmouth	Southampton	Western	YTD January 2009 target			335
	Crime	Operations	No OIC	Force						
YTD January 2009	18	38	78	25	66	42	38	1	18	324
YTD January 2008	30	28	52	22	61	43	189	6	12	443

Drug Intervention Measures (DIMs)

	Central	Isle of Wight	North & East	Portsmouth	Southampton	Western	Crime	Force
YTD January 2009	No data received							0
YTD January 2008	9	31	58	13	29	14	1	155
% change from 07/08	No data received							0

Note: The large variance between YTD 2007 and YTD 2008 is partially due to changes in the process for submissions up until Sept 07

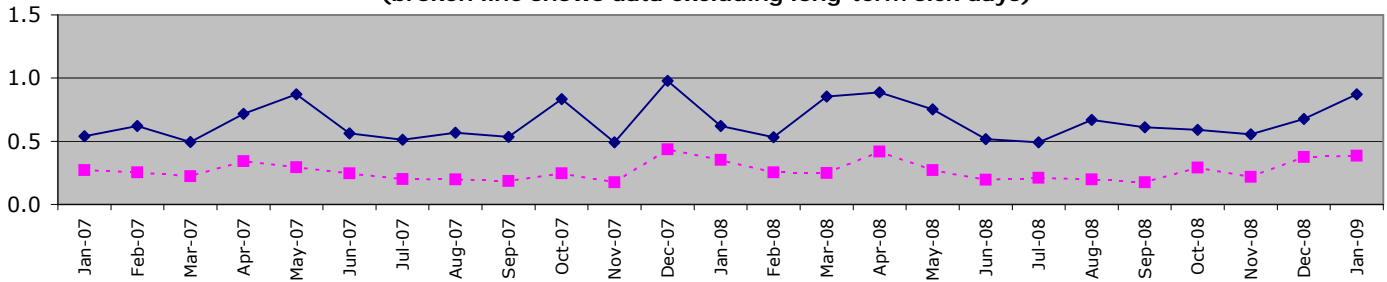
Organisational management

All Police officer sickness YTD = **6.63**

All Police officer sickness Jan = **0.86**

Police officers in OCUs

**Sickness and injury absence days per officer by month
(broken line shows data excluding long-term sick days)**

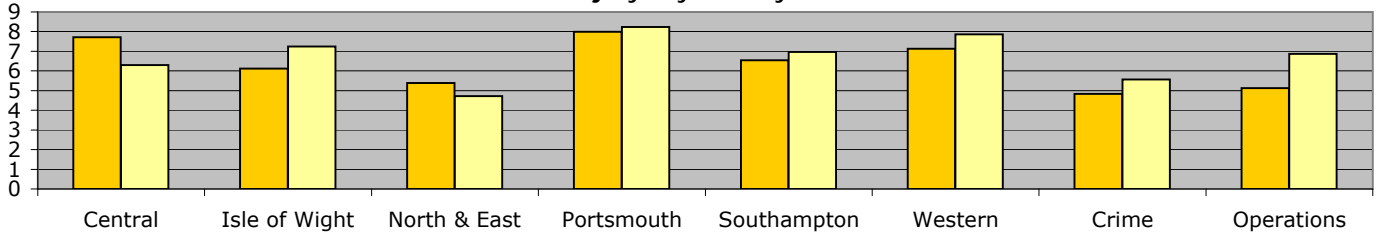


Force target for 08/09 = 7.5 days or fewer per officer (6.25 for 10 months) **YTD = 6.63 days lost per officer**

	Central	Isle of Wight	North & East	Portsmouth	Southampton	Western	Crime	Operations	OCU Totals
YTD Apr 08 - January 09	6.29	7.24	4.72	8.24	6.96	7.86	5.56	6.87	6.63
YTD Apr 07 - January 08	7.72	6.12	5.38	7.98	6.55	7.13	4.83	5.13	6.44
This month	0.59	1.00	0.69	1.08	1.09	0.95	0.52	1.29	0.87
% change	-18.4%	18.2%	-12.3%	3.2%	6.3%	10.4%	15.2%	34.0%	3.0%

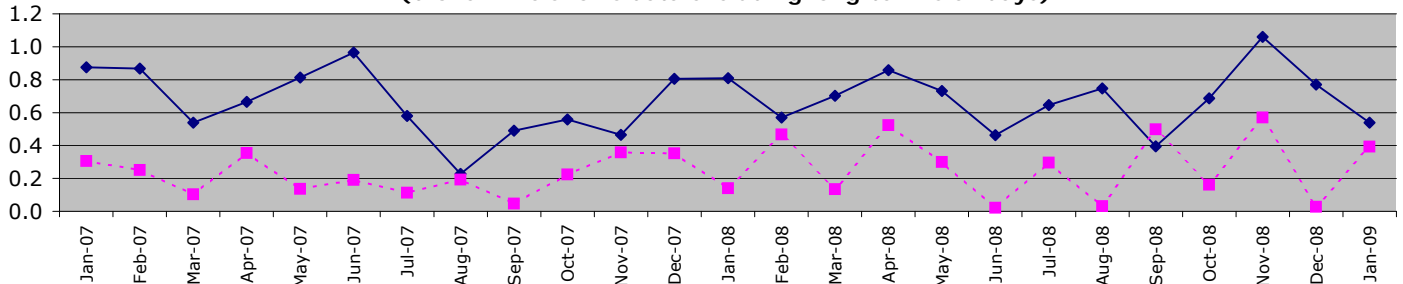
From January 09 "Operations" no longer includes SO Portfolio and Projects Staff

Sickness/injury days lost by officer YTD



Police officers not in OCUs

**Sickness and injury absence days per police officer by month
(broken line shows data excluding long-term sick days)**

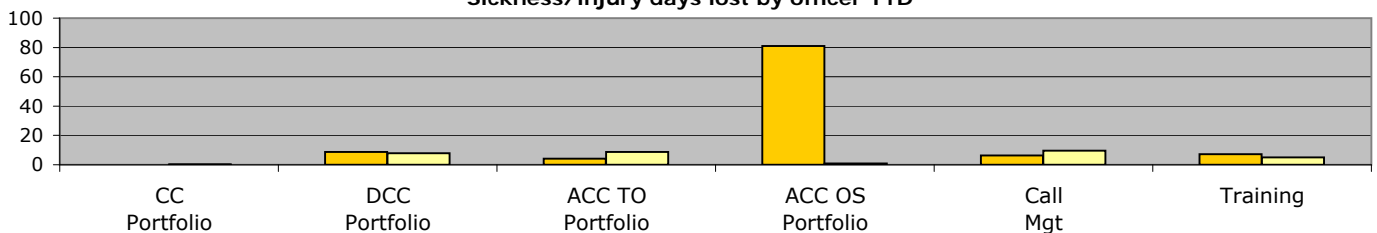


Force target for 08/09 = 7.5 days or fewer per officer (6.25 for 10 months) **YTD = 6.79 days lost per officer**

	CC Portfolio	DCC Portfolio	ACC TO Portfolio	ACC OS Portfolio	ACC SO Portfolio	DoF Portfolio	Call Mgt	Training	Non-OCU Totals
YTD Apr 08 - January 09	0.18	7.96	8.68	0.94	0.17	N/A	9.71	5.10	6.79
YTD Apr 07 - January 08	0.00	8.70	4.19	81.00	0.15	N/A	6.32	7.12	7.58
This month	0.00	0.76	1.08	0.00	0.00	N/A	0.35	0.42	0.87
% change	N/A	-8.5%	107.2%	-98.8%	13.3%	N/A	53.6%	-28.3%	-10.4%

ACC OS Portfolio excludes Call Mgt & Training figures which are reported on separately. No police officers work within DoF Portfolio. From Jan 09 - SO Portfolio includes CJD, SO Portfolio and Projects Staff

Sickness/injury days lost by officer YTD



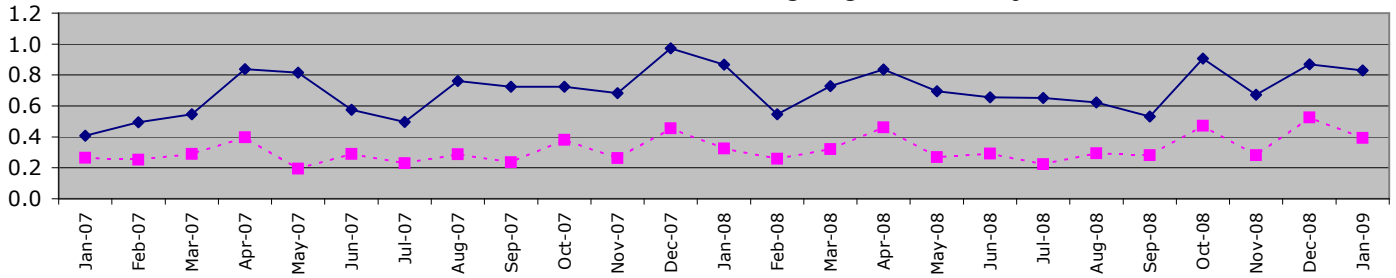
Organisational management

All Police staff sickness YTD = **7.31**

All Police staff sickness Jan = **0.93**

Police staff in OCU's

**Sickness and injury absence days per police staff member by month
(broken line shows data excluding long-term sick days)**

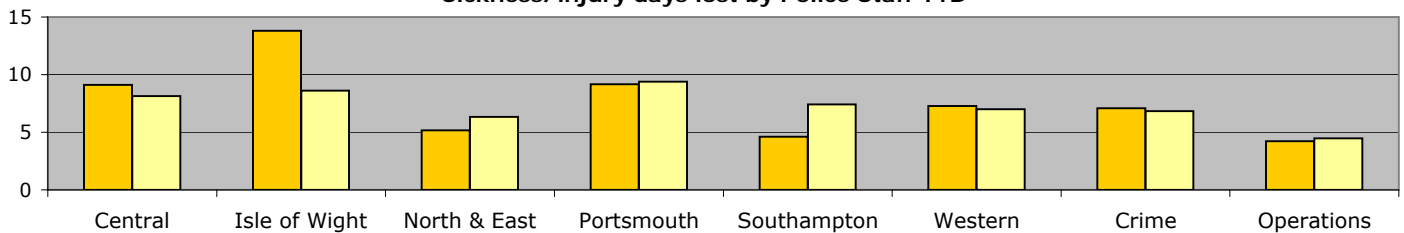


Force target for 08/09 = 7.5 days or fewer per staff (6.25 for 10 months) **YTD = 7.29 days lost per staff member**

	Central	Isle of Wight	North & East	Portsmouth	Southampton	Western	Crime	Operations	OCU Totals
YTD Apr 08 - January 09	8.13	8.62	6.33	9.40	7.41	7.01	6.85	4.48	7.29
YTD Apr 07 - January 08	9.11	13.80	5.17	9.16	4.61	7.28	7.09	4.22	7.30
This month	0.56	0.97	0.60	1.10	0.92	0.82	1.08	0.52	0.83
% change	-10.8%	-37.6%	22.6%	2.6%	60.6%	-3.7%	-3.5%	6.3%	-0.1%

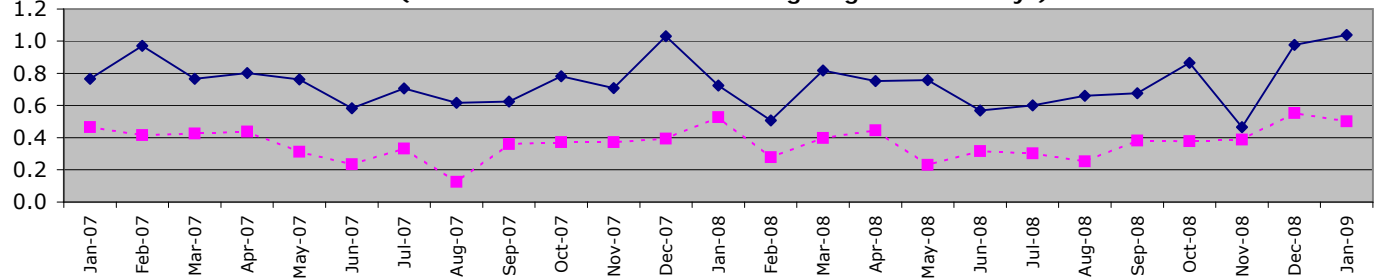
From January 09 "Operations" no longer includes SO Portfolio and Projects Staff

Sickness/injury days lost by Police Staff YTD



Police staff not in OCU's

**Sickness and injury absence days per police staff member by month
(broken line shows data excluding long-term sick days)**



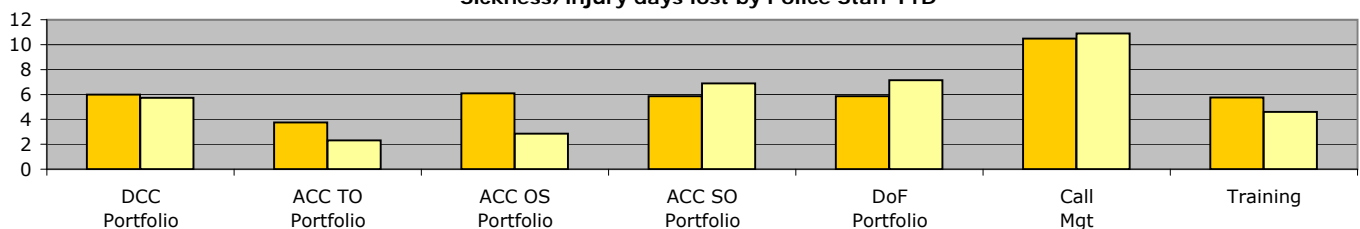
Force target for 08/09 = 7.5 days or fewer per staff (6.25 for 10 months) **YTD = 7.33 days lost per staff member**

	CC Portfolio	DCC Portfolio	ACC TO Portfolio	ACC OS Portfolio	ACC SO Portfolio	DoF Portfolio	Call Mgt	Training	Non-OCU Totals
YTD Apr 08 - January 09	0.00	5.74	2.32	2.85	6.88	7.15	10.90	4.61	7.33
YTD Apr 08 - January 09	14.12	6.00	3.75	6.09	5.85	5.85	10.47	5.76	7.37
This month	0.00	1.00	0.39	0.24	0.89	0.68	1.58	0.77	1.04
% change	-100.0%	-4.3%	-38.1%	-53.2%	17.6%	22.3%	4.1%	-20.0%	-0.5%

ACC OS Portfolio excludes Call Mgt & Training figures which are reported on separately.

From Jan 09 - SO Portfolio includes CJD, SO Portfolio and Projects Staff

Sickness/injury days lost by Police Staff YTD



Note: The December sickness figures were re-run in January to provide more accurate data - data was gathered for the December

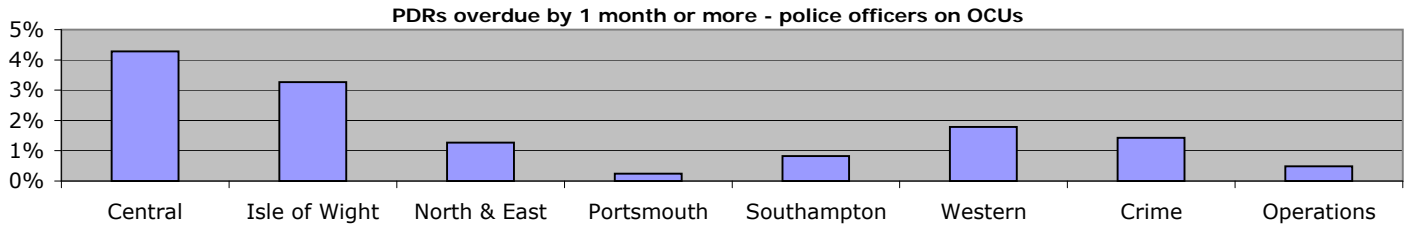
Organisational management

profile before staff were able to update Delphi following the Christmas/New Year period.

Organisational management

Overdue PDRs

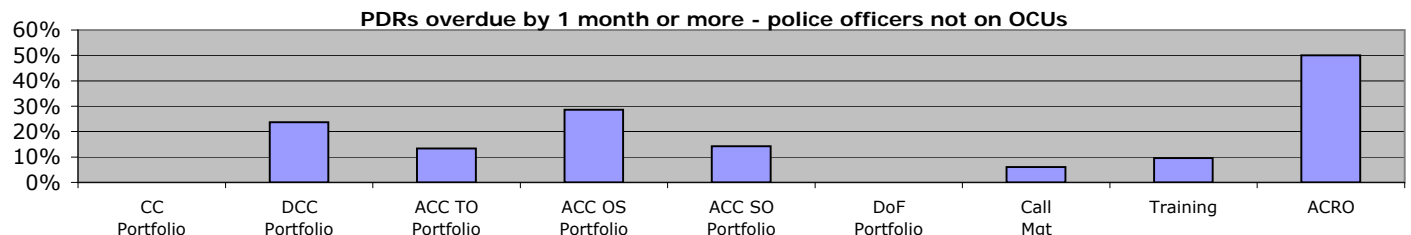
Police officer PDRs - police officers in OCUs



January 2009	Central	Isle of Wight	North & East	Portsmouth	Southampton	Western	Crime	Operations
Population	630	214	550	420	488	504	421	409
Overdue	27	7	7	1	4	9	6	2
% overdue	4.3%	3.3%	1.3%	0.2%	0.8%	1.8%	1.4%	0.5%

From January 09 "Operations" no longer includes SO Portfolio and Projects Staff

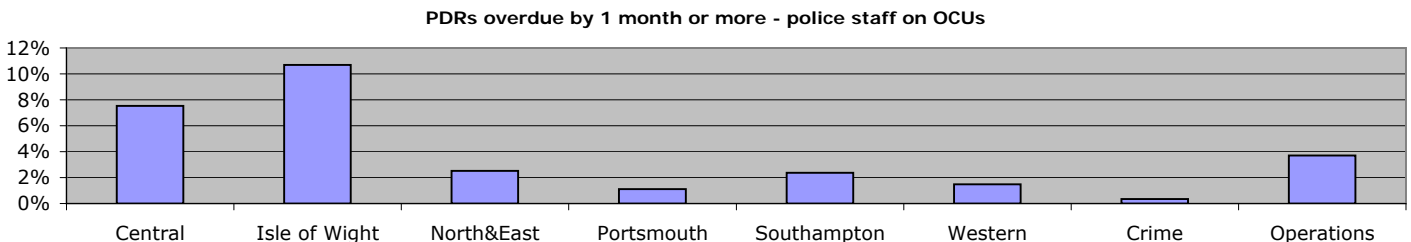
Police officer PDRs - police officers not on OCUs



January 2009	CC Portfolio	DCC Portfolio	ACC TO Portfolio	ACC OS Portfolio	ACC SO Portfolio	DoF Portfolio	Call Mgt	Training	ACRO
Population	9	38	30	7	7	N/A	33	63	2
Overdue	0	9	4	2	1	N/A	2	6	1
% overdue	0.0%	23.7%	13.3%	28.6%	14.3%	N/A	6.1%	9.5%	50.0%

ACC OS Portfolio excludes Call Mgt & Training figures which are reported on separately. No police officers work within DoF Portfolio
From Jan 09 - SO Portfolio includes CJD, SO Portfolio and Projects Staff

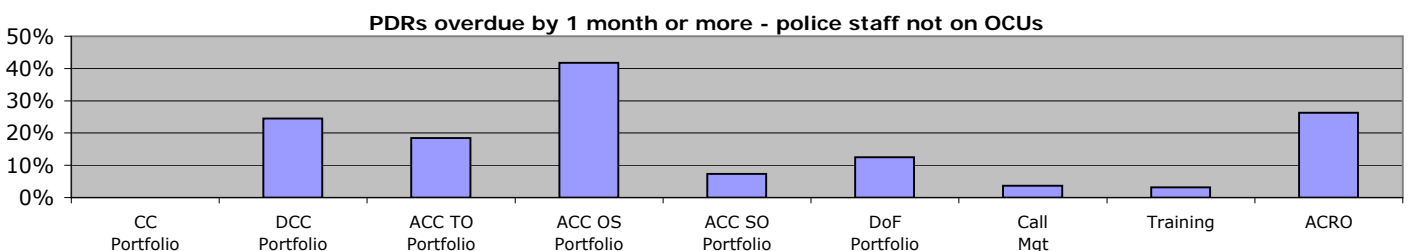
Police staff PDRs - police staff in OCUs



January 2009	Central	Isle of Wight	North&East	Portsmouth	Southampton	Western	Crime	Operations
Population	239	103	198	179	211	202	292	135
Overdue	18	11	5	2	5	3	1	5
% overdue	7.5%	10.7%	2.5%	1.1%	2.4%	1.5%	0.3%	3.7%

From January 09 "Operations" no longer includes SO Portfolio and Projects Staff

Police staff PDRs - police staff not in OCUs



January 2009	CC Portfolio	DCC Portfolio	ACC TO Portfolio	ACC OS Portfolio	ACC SO Portfolio	DoF Portfolio	Call Mgt	Training	ACRO
Population	2	278	38	67	366	144	406	94	57
Overdue	0	68	7	28	27	18	15	3	15
% overdue	0.0%	24.5%	18.4%	41.8%	7.4%	12.5%	3.7%	3.2%	26.3%

ACC OS Portfolio excludes Call Mgt & Training figures which are reported on separately
From Jan 09 - SO Portfolio includes CJD, SO Portfolio and Projects Staff

Organisational management

Minority Ethnic Officer Recruitment

	All recruits	Minority ethnic recruits	%
YTD January 2009	65	1	1.5%

Female Officer Representation

	Male strength	Female strength	%
YTD January 2009	2741.2	1015.9	27.0%

NCRS compliance

	Central	Isle of Wight	North & East	Portsmouth	Southampton	Western	Crime
NCRS audits	Fair 82%	Fair 82%	Fair 84%	Poor 72%	Poor 64%	Fair 85%	No data

Note: NCRS audit data relates to a rolling 12 mth period

Self-Inspection	91.0%	85.0%	80.0%	66.0%	81.0%	90.0%	No data

Note: Self-Inspections - only appealed records are moderated by the Force Crime Registrar

Budget spend

The actual spend to the end of December 2008 was £215.8m. This gives a projected spend for the force at the end of the financial year of £294.1m, which will be an overspend of £1.4m against the agreed budget.

The force is taking measures to eliminate this overspend during the course of the current financial year.

	Central	Isle of Wight	North & East	Portsmouth	Southampton	Western	Crime	Operations
Projected overspend 2008/2009	£39,000	-£71,000	£699,000	£627,000	-£42,000	-£199,000	£32,000	£549,000

Efficiency savings

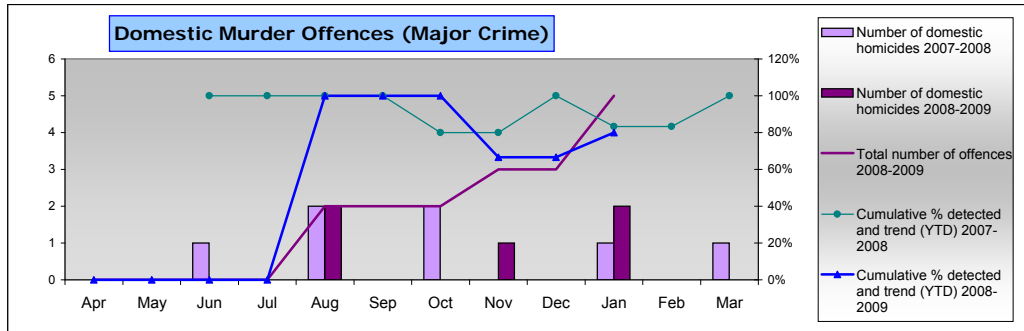
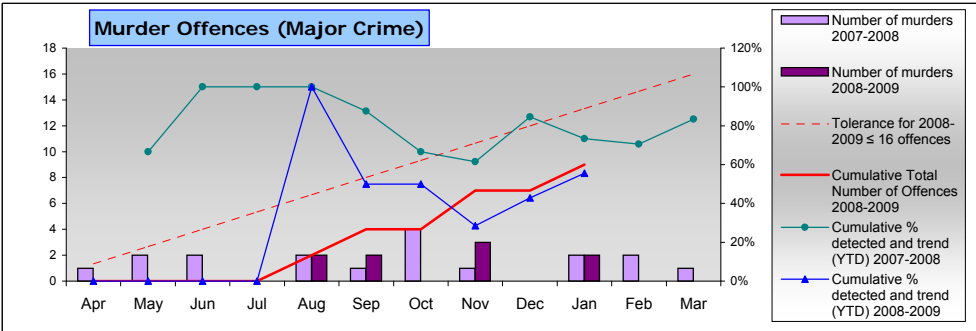
The Authority needs to maximise efficiency gains both due to its budgetary constraints and in order to achieve value for money.

In addition, there is a national Home Office target to deliver recurring efficiency or productivity gains equivalent to 9.3% of the 2007/08 'Gross Revenue Expenditure' by the end of 2010/11. Each Authority must set its own challenging target.

The Authority and Force are currently working to a target equivalent to the national target, which equates to £30m over the 3 years (an average of £10m per annum).

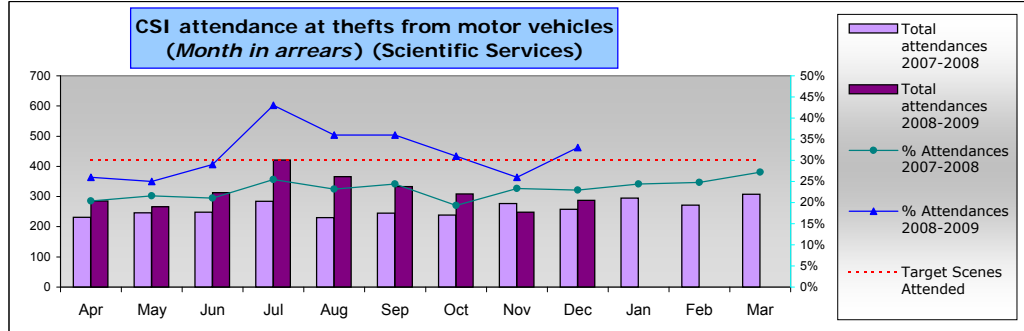
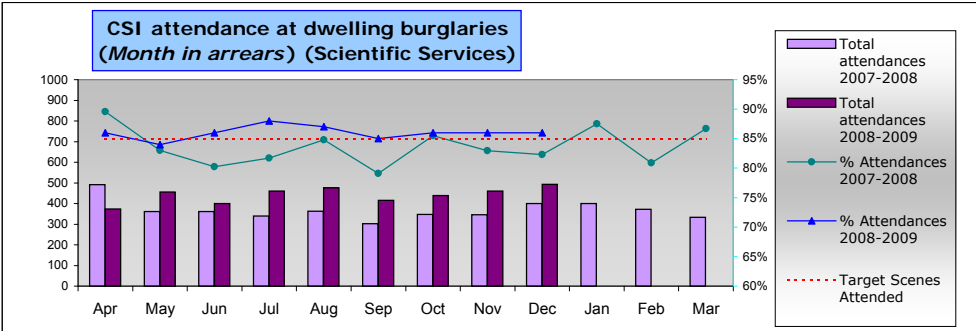
An efficiency saving register that is used as a tracking tool is now monitoring progress of ongoing efficiency initiatives valued at £15.6m across the current and future financial years. Some of the initiatives listed are not in a position yet to quantify the potential efficiency savings deliverable. It will be seen that there are also a number of initiatives listed on the register which are only at the start up stage of the project life cycle and are unlikely to deliver productivity gains within the required timeframe: they are nonetheless important as efficiency is an ongoing long term requirement.

Specialist Operations - 7 OCU



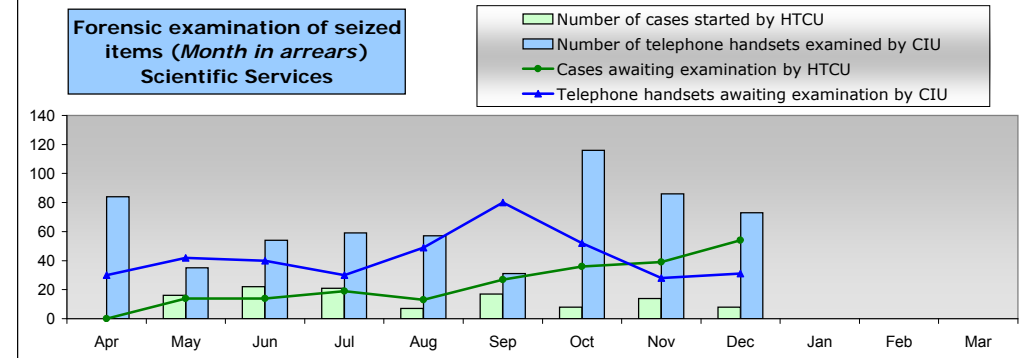
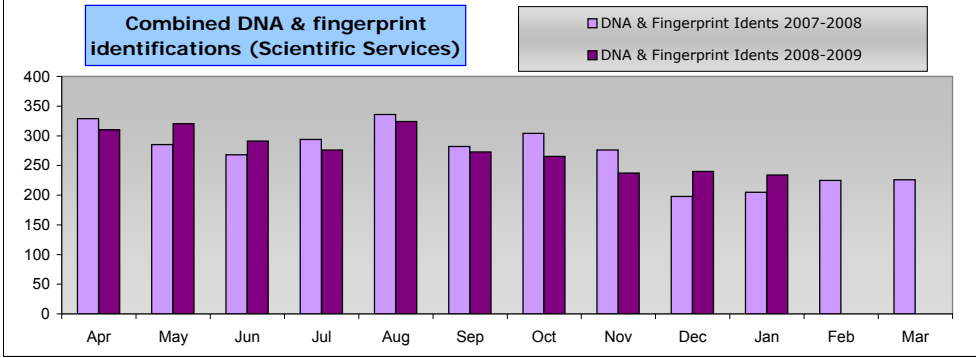
All murder offences this year compared to last year and detection rates
 The target is no more than 16 offences for the current year
 Detection target for murder is 100%

Domestic murder offences this year compared to last year and detection rates
 Detection target for murder is 100%



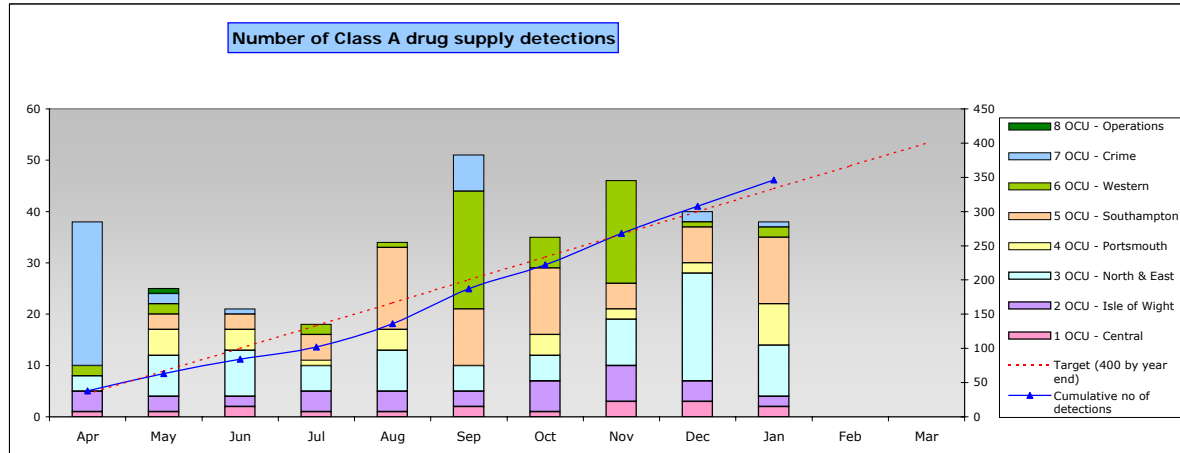
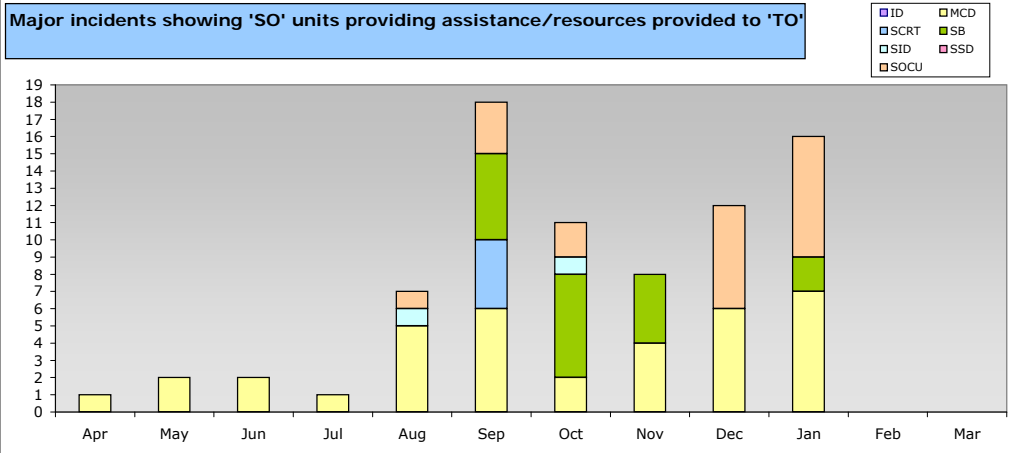
Burglary dwelling scene attendance rates. Target is no less than 85%

Theft from motor vehicle scene attendance rates. Target is no less than 30%



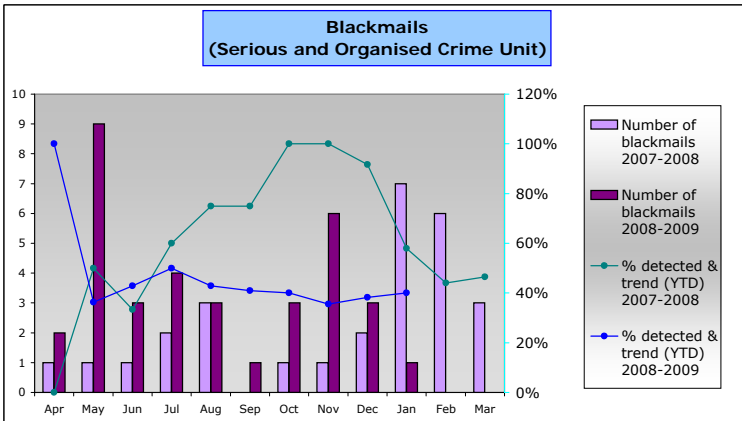
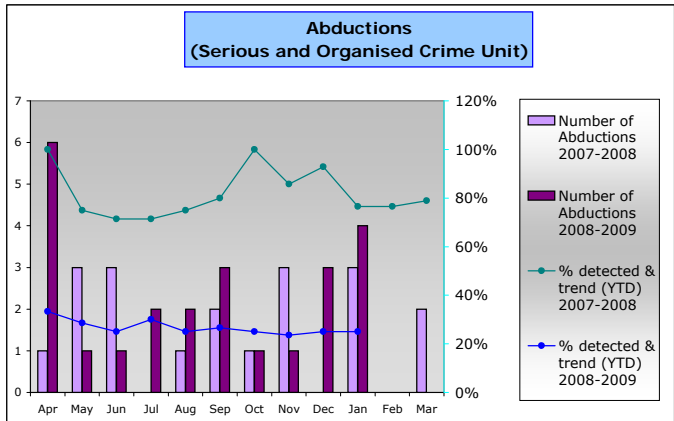
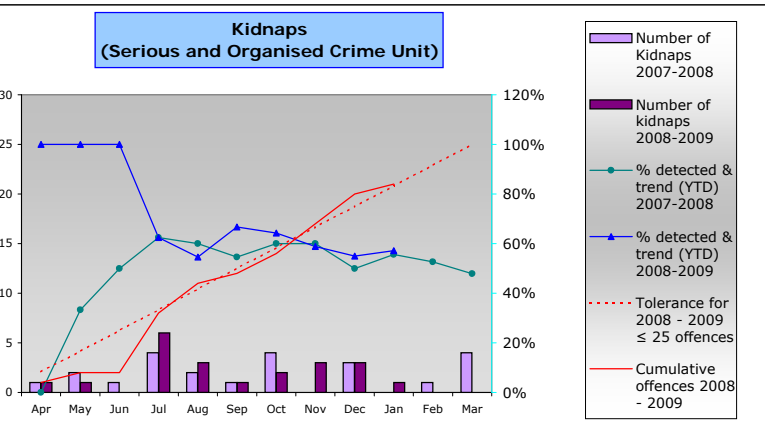
Combined DNA & fingerprint identifications this year compared to last year

Number of cases started & cases awaiting examination by HTCUCI
 NB: Cases include all computing equipment not just computers (eg monitors, drives, etc...)
 Number of telephone handsets examined & telephone handsets awaiting examination by CIU



Serious/major incidents where 'SO' expertise or resources were utilised to assist or manage the investigation

Number of detections for offences of Class A drug supply by month by OCU and total detections to date compared with Force target of 400 for year.



All kidnaps within force this year compared to last year and detection rates. Target for 2008/09 is no more than 25 offences (10% reduction on 2007/08)

All abductions within force this year compared to last year and detection rates

All blackmails within force this year compared to last year and detection rates.

Specialist Operations - 8 OCU

8 OCU Commitment to Pre-Planned Operations - January 09

Op. Name	OCU Supported							Total
	1	2	3	4	5	6	Other	
Radon	0	0	0	0	0	0	0	0
Advasar	0	0	0	0	0	0	0	0
Cabot	0	0	0	1	1	0	0	2
NEMISIS	8	0	2	21	11	2	0	44
Custodian	0	0	0	0	0	0	2	2
Other	103	0	23	76	86	44	9	341
Total Ops.	111	0	25	98	98	46	11	389
Arrests	11	0	0	12	5	4	0	32
FPNs	6	0	0	50	0	0	0	56
Seizures	3	0	0	25	0	0	0	28
Other	27	0	0	58	0	0	0	85
Total Results	47	0	0	145	5	4	0	201

8 OCU Commitment to ANPR Operations - January 09

	OCU Supported							Total
	1	2	3	4	5	6	Other	
No. of Ops	4	0	5	5	1	0	0	15
Arrests	0	0	0	1	0	0	0	1
FPNs	1	0	0	18	0	0	0	19
Seizures	1	0	0	5	0	0	0	6
Other	28	0	0	51	0	0	0	79
Total Results	30	0	0	75	0	0	0	105

Interventions in support of OCUs and Force Strategy YTD

	Persons Arrested	January 2009 Incidents attended ^{*1}			FPNs ^{*2}		C12 Stops [*]	S165 Vehicle
		Total	% DSP	% ONS	Disorder	Other		
ASU	2	Data given as a whole for 8 OCU				1	2	
DSU	369				6	132	949	
FSU	581				16	20	1742	
MSU	27				0	5	70	
OPPU	0				0	2	1	
SFO	244				1	109	5642	
ARV	1151				16	1556	2410	
RPU	1757				8	18248	1132	
Total	4131				17480	27%	15%	47

*C12A (Stop and Search& Stop and Account) and C12B (Vehicle Stop) data to **December 2008** only.

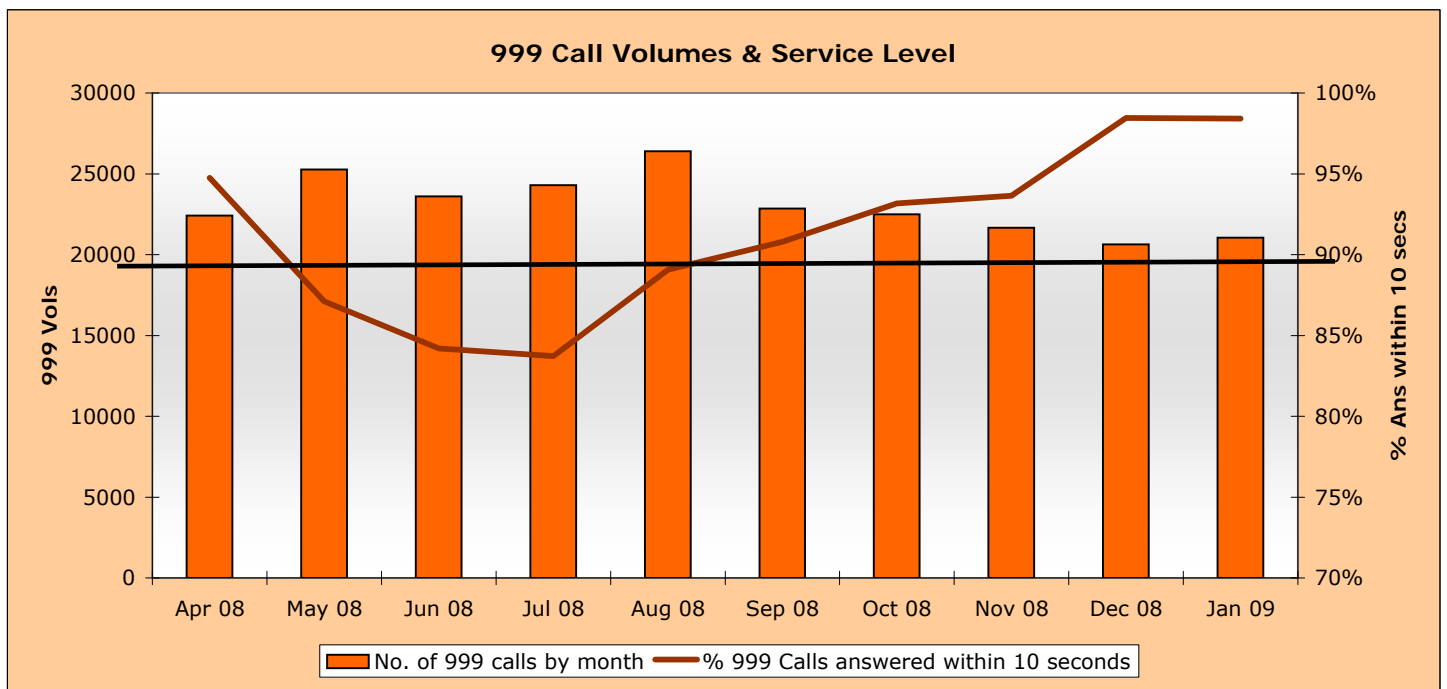
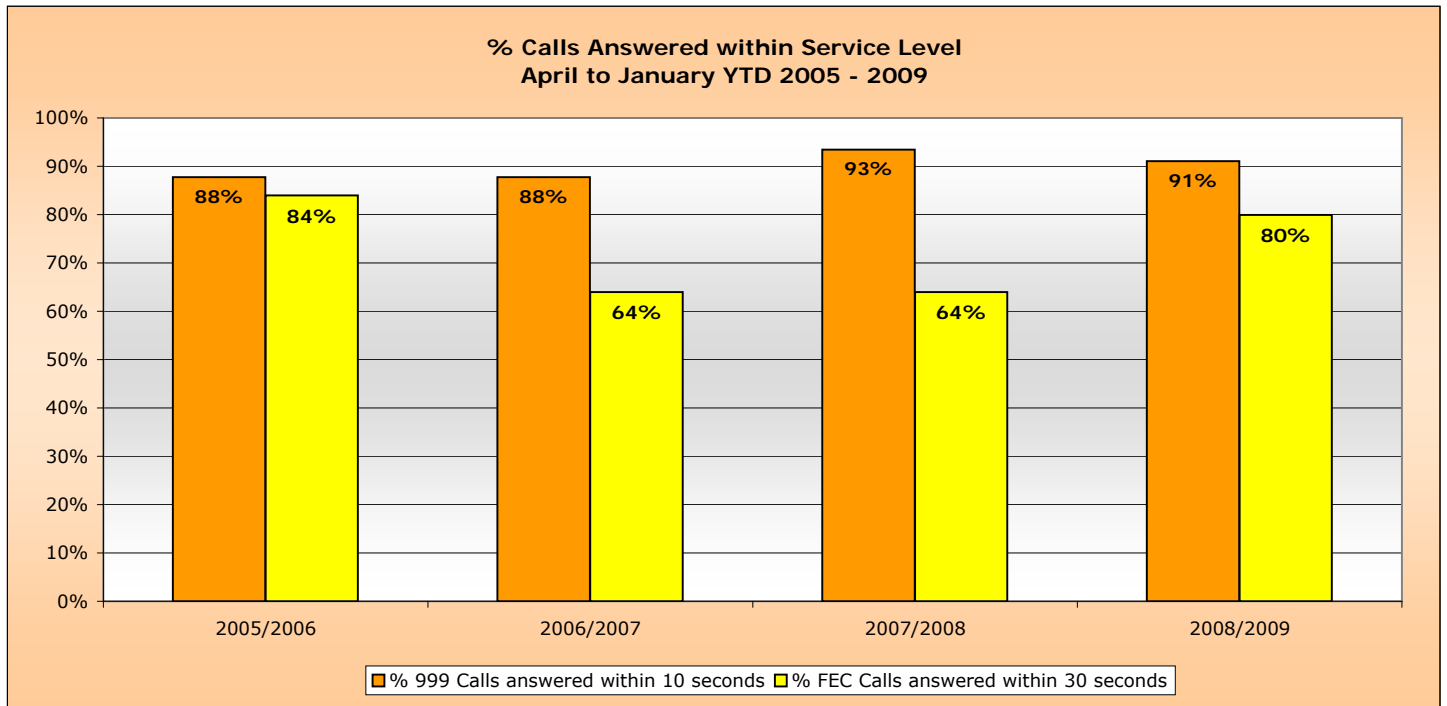
*¹ Altaris data - Dispatch (DSP) and Arrival (ONS) of 8 OCU units as a percentage of Grade 1 and 2
8 OCU units were OnScene at 67% of those incidents they were dispatched to.
8 OCU units currently equate to 11% of the Force frontline operational officers.

*² FPNs are Fixed Penalty Notices issued.

*³ Vehicles seized under Section 165 of the Road Traffic Act are for No Insurance or No Driving Licence.

Operational Services

The January service level for 999 calls was 98.41% which brings the YTD to 91.04% compared to a target of 90%. The FEC achieved a service level of 92.86%, which means that they have met their target for 2 months in a row and brought their YTD service level up from 78.7% to 79.9%



Victim focus

Hampshire Constabulary has always valued victim care. With the introduction of the Policing Pledge, this section will be used not only to inform how we manage our victims of crime, but our progress and actions that relate to the Pledge.

Particular emphasis surrounds compliance with the Victims' Code - keeping people updated - and it is this area that is currently reported on. Other commitments from the Pledge will be periodically reported on.

APACS indicators for user satisfaction

iQuanta data for MSG for the 12 months up to September 2008

Crime type	MSG position	1st in MSG
<u>Vehicle crime</u>		
Ease of contact	3/8	Hertfordshire
Actions taken	4/8	Essex
Follow up	4/8	Hertfordshire
Treatment	4/8	Hertfordshire
OVERALL	5/8	Hertfordshire
<u>Burglary</u>		
Ease of contact	2/8	Hertfordshire
Actions taken	1/8	Hampshire
Follow up	1/8	Hampshire
Treatment	2/8	Hertfordshire
OVERALL	3/8	Hertfordshire
<u>Violent crime</u>		
Ease of contact	4/8	Essex
Actions taken	4/8	Essex
Follow up	6/8	Avon and Somerset
Treatment	3/8	Hertfordshire
OVERALL	2/8	Sussex
<u>RTC</u>		
Ease of contact	1/8	Hampshire
Actions taken	2/8	Hertfordshire
Follow up	3/8	Hertfordshire
Treatment	2/8	Hertfordshire
OVERALL	2/8	Hertfordshire
<u>All users (excluding racist incidents)</u>		
Ease of contact	2/8	Hertfordshire
Actions taken	3/8	Hertfordshire
Follow up	3/8	Hertfordshire
Treatment	2/8	Hertfordshire
OVERALL	2/8	Hertfordshire

Victim Focus

Summary results of Dip-sample Victim Code Compliance checks (latest month for available data followed by YTD)

% where victim was informed within 5 days of an investigation being closed

	Central	Isle of Wight	North & East	Portsmouth	Southampton	Western	Force
December 2008	100%	100%	100%	100%	80%	95%	96%
YTD	100%	98%	97%	97%	62%	98%	92%

% where the victim has been updated on a monthly basis (if applicable)

	Central	Isle of Wight	North & East	Portsmouth	Southampton	Western	Force
December 2008	100%	40%	50%	100%	100%	100%	82%
YTD	97%	71%	78%	93%	96%	94%	88%

% where the victim was notified upon filing (if applicable)

	Central	Isle of Wight	North & East	Portsmouth	Southampton	Western	Force
December 2008	100%	95%	85%	100%	100%	95%	96%
YTD	100%	93%	86%	97%	100%	95%	95%

Victim support status for crimes

Month of Jan 2009	Central	Isle of Wight	North & East	Portsmouth	Southampton	Western	Force	Force %
Victim informed of VSS accepted	219	44	184	135	321	186	1089	8.64%
Victim informed of VSS declined	1683	423	1435	1189	1655	1194	7579	60.16%
VSS aware	106	9	38	19	31	85	288	2.29%
Victimless crime	614	193	563	610	600	525	3105	24.64%
Not stated	26	6	207	134	145	20	538	4.27%
Total crimes	2648	675	2427	2087	2752	2010	12599	N/A
% referred	12.27%	7.85%	9.15%	7.38%	12.79%	13.48%	10.93%	N/A

YTD to Jan 2009	Central	Isle of Wight	North & East	Portsmouth	Southampton	Western	Force	Force %
Victim informed of VSS accepted	2550	590	2005	1410	3290	2441	12286	9.16%
Victim informed of VSS declined	17549	5794	16282	12376	17919	15226	85146	63.50%
VSS aware	823	90	499	232	316	471	2431	1.81%
Victimless crime	6292	2327	6153	6131	6050	5545	32498	24.24%
Not stated	38	71	492	745	356	21	1723	1.29%
Total crimes	27252	8872	25431	20894	27931	23704	134084	N/A
% referred	12.38%	7.66%	9.85%	7.86%	12.91%	12.28%	10.98%	N/A