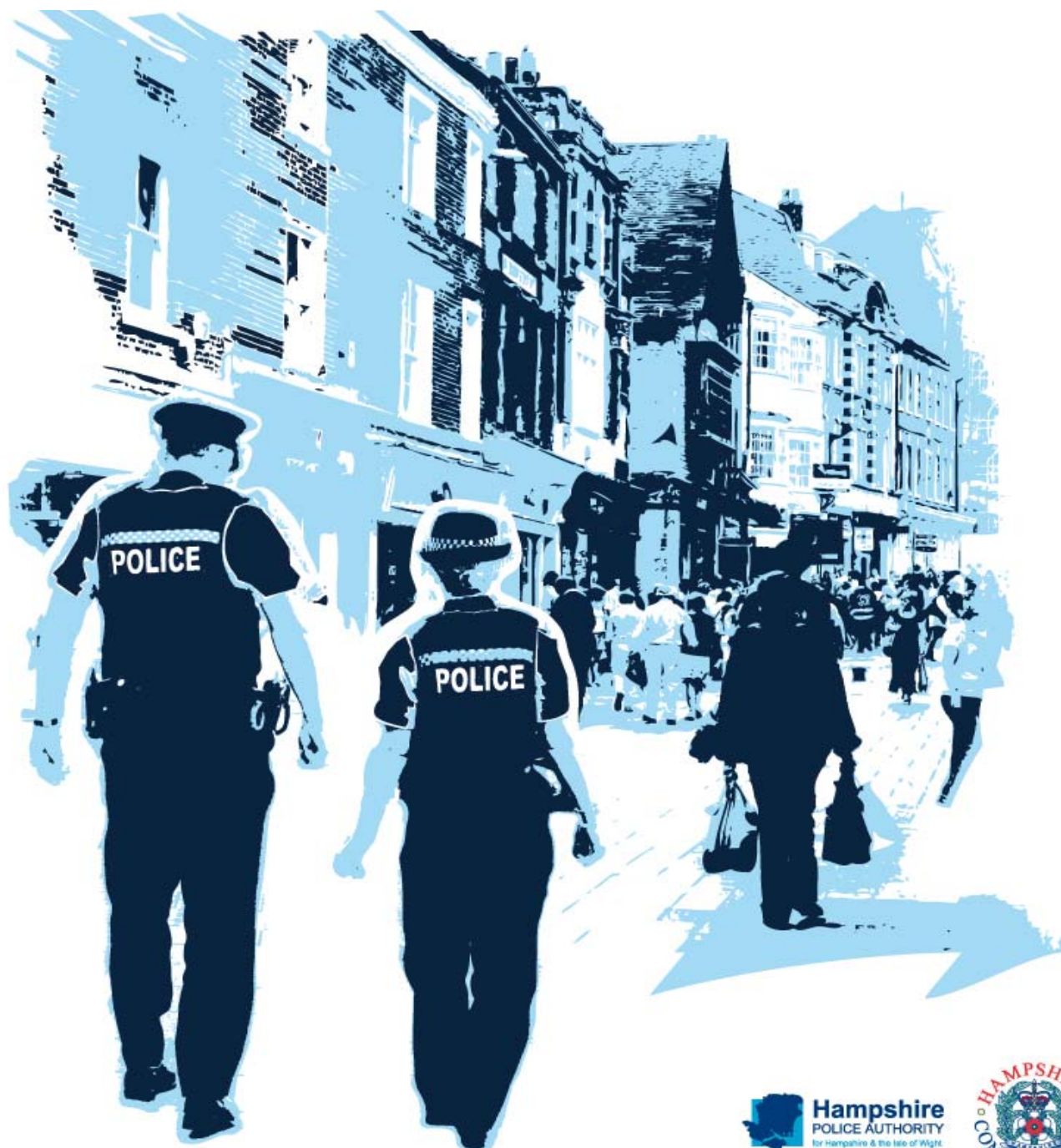


Performance Profile

December 2010



Summary and index

Summary

2010/11 Reporting Year

This document contains a strategic overview of the Constabulary's performance. It has a variety of performance measures within it. The format of the profile has been aligned to the Policing Priorities identified by the Control Strategy. It provides information on our performance against Force targets, some of the APACS Indicators and the Policing Pledge. It also aims to provide supplementary information to assist in understanding reasons behind the performance in these areas. It has been designed as a headline document that will enable our customers, both internally and externally, to easily assess performance information for key domains. This year additional monitoring information within the six domains of the Policing Priorities will be published quarterly - a calendar of publication is located at the bottom of this page. If during a month an issue is identified which needs to be highlighted this will be done through 'exception reporting'.

A matrix can be found at the front of the profile which reflects our year to date performance against our targets.

Performance in key areas is then explored in more depth with an indication of where each measure has originated - for example, APACS Indicator or a Force Control Strategy (FCS) measure.

Where applicable, within the document, MSG (Most Similar Group) data is published along with the crime and detection data. MSGs are calculated by the Home Office based on a number of socio-demographic & geographic variables which are strongly linked to crime/incident levels and the fear of crime. These groups provide a benchmark for comparison of crime and detection rates. Below the applicable crime tables there are three rows relating to MSG data. The first provides the MSG position for the OCU/Force for that crime type. The second displays OCU Actual, this is the number of offences per 1,000 population. The third row shows the MSG Average which is the total number of offences per 1,000 population divided by the number within the MSG. The same three rows are provided in relation to detection data, where data is provided in % figures rather than per 1,000 population.

Please note: iQuanta data is provisional. Within the profile, Hampshire data is published and compared against the MSG average. The other forces within Hampshire's MSG are: Avon and Somerset, Bedfordshire, Essex Hertfordshire, Kent, Sussex and Thames Valley. We are unable to provide figures from iQuanta for these forces, due to the provisional nature of this data.

This document is then taken forward by key stakeholders within the organisation to the Force Performance Review Group, where it is used to highlight areas of good performance and those for development.

Crime OCU contribute to the following areas within this document, either via investigation, forensic support, and/or review of these crimes: homicide, serious violent, sexual and acquisitive crime, class A drug supply, drug seizures, domestic violence/hate crime, FIU form submissions, gun/knife crime (where this results in a major investigation/forensic support).

This is an evolving document and as such, the contents of which may alter over time and any feedback would be welcomed by the Performance Review Team.

Calendar of Quarterly Reporting

April - Catching criminals & managing offenders and Protecting our communities
May - Making the most of our resources and Equipping our team to deliver
June - Providing an excellent service and An active presence in every neighbourhood
July - Catching criminals & managing offenders and Protecting our communities
August - Making the most of our resources and Equipping our team to deliver
September - Providing an excellent service and An active presence in every neighbourhood
October - Catching criminals & managing offenders and Protecting our communities
November - Making the most of our resources and Equipping our team to deliver
December - Providing an excellent service and An active presence in every neighbourhood
January - Catching criminals & managing offenders and Protecting our communities
February - Making the most of our resources and Equipping our team to deliver
March - The year end profile will have all six domain areas included

MSG Colour Key

Force	OCU
1-2	1-4
3-4	5-8
5-6	9-12
7-8	13-15

Index

Page

FCS = Force Control Strategy

Year to date performance matrix

2	Summary			including notes on matrices terminology
3	Index			
4	Year to date targets matrix			

Providing an excellent service

5	National public confidence measure	APACS 2.2	FCS	iQuanta
5	Local confidence survey data			Consultation & Research Team
6	Overall satisfaction	APACS 1.1	FCS	Consultation & Research Team
6	Being kept informed		FCS	Consultation & Research Team
6	Comparative satisfaction of minority ethnic groups	APACS 1.3		Consultation & Research Team
6	Satisfaction of victims of racist incidents	APACS 1.2		Consultation & Research Team
6	MSG user satisfaction data			Consultation & Research Team

An active presence in every neighbourhood

7	Rowdy and nuisance behaviour		FCS	Business Objects
8	Criminal damage		FCS	Business Objects

Catching criminals and managing offenders

9	Serious acquisitive crime	APACS 5.2&6.2	FCS	Business Objects
10	Breakdown: Robbery, dwelling burglary, vehicle crime			Business Objects
10	Breakdown: Theft of a motor vehicle, theft from a motor vehicle			Business Objects
10	Organised crime groups			7 OCU Performance Team

Protecting our communities

11	Violence against the person with injury	APACS5.5&5.6		Business Objects
12	Serious violent crime	APACS 5.1&6.1	FCS	Business Objects
13	Assault with less serious injury	APACS 5.3	FCS	Business Objects
14	Reduction in dwelling burglary	APACS 5.2		Business Objects

Making the most of our resources

15	Minority ethnic recruitment		FCS	Personnel
15	Minority ethnic police officer recruitment	APACS 3.1		Personnel
15	Minority ethnic police staff recruitment			Personnel
15	Female officer representation	APACS 3.2		Personnel

Equipping our team to deliver

15	Staff confidence in the organisation			Consultation & Research Team
----	--------------------------------------	--	--	------------------------------

Monitoring Information for Providing an excellent service

16	Letters of appreciation			PSD
16	Reports of incivility			PSD
16	Allegations and their resolution			PSD
17	Responding to public contact			Call Management
17	Use of scheduled appointments			Call Management

Monitoring Information for An active presence in every neighbourhood

18	Safer neighbourhood teams			CARM
18	Safer neighbourhood team personnel			Personnel
19	Stop and search			Business Objects

Year to date performance targets matrix

	Target	Actual	Central	Isle of Wight	North & East	Portsmouth	Southampton	Western
Providing an excellent service								
Confidence in local police	55.3%	52.9%	This is a Force measure					
Local confidence measure (latest quarter)	87.3%	77.0%	77.0%	78.0%	79.0%	77.0%	76.0%	78.0%
Overall satisfaction (data for rolling 12 months)	68.0%	69.0%	69.0%	68.0%	68.0%	68.0%	65.0%	73.0%
An active presence in every neighbourhood								
Rowdy & nuisance behaviour (inc vehicle nuisance)	<52248	48053	8267	3305	9114	7867	11543	7957
	OCU specific targets		10350	3429	9653	8157	11686	8973
Reduce criminal damage	<20657	18510	3805	1682	3519	2489	3754	3261
	OCU specific targets		4477	1523	4039	2667	4239	3712
Catching criminals & managing offenders								
Serious acquisitive crime SD	>15%	13.3%	15.3%	15.9%	16.6%	10.3%	11.5%	12.8%
Organised crime group (OCG) - disruptions	>40%	183%	Owned by Crime OCU					
Protecting our communities								
Reduce violence against the person with injury	<10798	10799	2197	958	1657	1999	2425	1563
	OCU specific targets		2193	738	1780	1929	2514	1644
Reduction in dwelling burglary	<4023	3791	617	223	678	690	1033	550
	OCU specific targets		790	192	846	740	765	689
Making the most of our resources								
BME recruitment	>5%	5.2%	This is a Force measure					
Equipping our staff to deliver								
Staff confidence in the organisation	61%	data unavailable	No data available					
Force Total - targets achieved	6		5	3	6	4	3	5

Notes to be read in conjunction with matrices

All citizen focus data
SD
BME
OCU specific targets

Based on "completely or very satisfied"
Sanction detections
Black and minority ethnic
OCU specific targets are rounded to 0 decimal places; the actual figure may therefore seem the same but appear amber due to this rounding

Force target areas for providing an excellent service

	Target	Actual	Central	Isle of Wight	North & East	Portsmouth	Southampton	Western
Confidence in local police (latest data)	55.3%	52.9%	This is a Force measure					
Local Confidence Measure (latest data)	87.3%	77%	77.0%	78.0%	79.0%	77.0%	76.0%	78.0%
Overall satisfaction (rolling 12 months)	68.0%	69.0%	69.0%	68.0%	68.0%	68.0%	65.0%	73.0%

British Crime Survey Confidence Data

SPI 2.2 Force Target

This data is updated by iQuanta approximately every quarter

National Public Confidence Measure

Jun-10

Hampshire	52.9%
MSG Position	2 of 8
MSG average	51.2%

This data is based on 'The police and local council are dealing with the anti-social behaviour and crime issues that matter in this area'

The Home Office has set a target to achieve a 12% improvement by 2012 against the baseline of 47.3%. Hampshire aimed to improve by 4% each year, as this is the second year, our target this year is an 8% improvement on baseline which equates to 55.3%

Perceptions of local drug use

Jun-10

Hampshire	24.0%
MSG Position	3 of 8
MSG average	23.7%

This data is based on 'The percentage who perceive that people using or dealing drugs are a problem in their local area'

Local Confidence/Public Attitude Survey Data

Figures relate to the percentage of respondents who agree or strongly agree with the question.

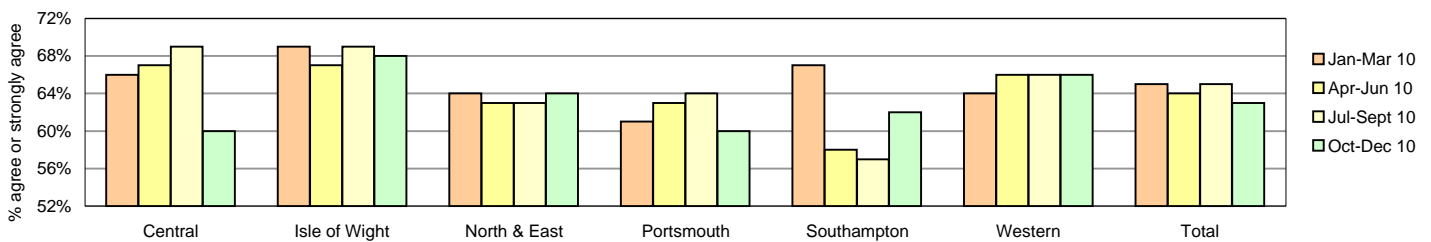
Hampshire's local surveys have a confidence level of +/-4%. This means that changes of less than 4% may not reflect a real change in performance

The Police and local council are dealing with the anti-social behaviour and crime issues that matter in this area

This question is no longer asked as it has ceased to be a Home Office target. It has therefore been removed from the profile.

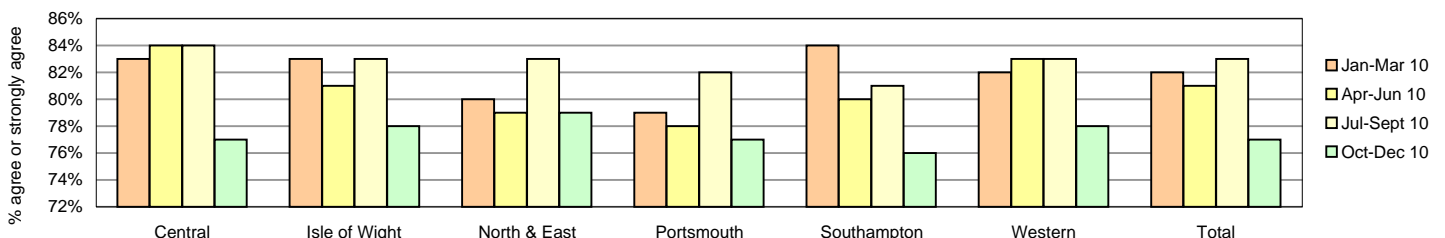
The Police are dealing with the things that matter locally

	Central	Isle of Wight	North & East	Portsmouth	Southampton	Western	Total	No. Surveys
January - March 2010	66%	69%	64%	61%	67%	64%	65%	3708
April - June 2010	67%	67%	63%	63%	58%	66%	64%	3612
July - September 2010	69%	69%	63%	64%	57%	66%	65%	3620
October - December 2010	60%	68%	64%	60%	62%	66%	63%	3609



Taking everything into account, I have confidence in the Police in this area

	Central	Isle of Wight	North & East	Portsmouth	Southampton	Western	Total	No. Surveys
January - March 2010	83%	83%	80%	79%	84%	82%	82%	3708
April - June 2010	84%	81%	79%	78%	80%	83%	81%	3612
July - September 2010	84%	83%	83%	82%	81%	83%	83%	3620
October - December 2010	77%	78%	79%	77%	76%	78%	77%	3609



Force target areas for providing an excellent service

Force target areas for providing an excellent service

Overall satisfaction (user satisfaction survey results)

SPI 1.1 Force Target

Rolling 12 months data relates to: Jan 10 - Dec 10; rolling 3 months data relates to Oct 10 - Dec 10

Overall satisfaction includes burglary, vehicle crime, violent crime and minor injury RTCs for % completely or very satisfied

Target 68%	Central	Isle of Wight	North & East	Portsmouth	Southampton	Western	Total	No. Surveys
Rolling 12 months	69%	68%	68%	68%	65%	73%	69%	7647
Rolling 3 months	62%	65%	64%	67%	60%	72%	65%	1883

Being kept informed (user satisfaction survey results)

Rolling 12 months data relates to: Jan 10 - Dec 10; rolling 3 months data relates to Oct 10 - Dec 10

Being kept informed includes burglary, vehicle crime, violent crime and minor injury RTCs for % completely or very satisfied

	Central	Isle of Wight	North & East	Portsmouth	Southampton	Western	Total	No. Surveys
Rolling 12 months	58%	59%	57%	58%	55%	62%	58%	7472
Rolling 3 months	48%	56%	51%	55%	45%	57%	51%	1863

Comparative satisfaction of minority ethnic groups

SPI 1.3

Data relates to interviews which took place Jan 10 - Dec 10

These figures are for overall satisfaction for burglary, vehicle crime, violent crime, minor injury RTCs and racist incidents

	Completely and very satisfied	Completely, very and fairly satisfied	No. Surveys
White	69.2%	85.0%	6886
Minority Ethnic	57.2%	78.0%	428
Satisfaction Gap	12.0%	7.0%	

Satisfaction of victims of racist incidents

SPI 1.2

These figures relate to interviews which took place Jan 10 - Dec 10; these will be updated quarterly

Racist incident overall satisfaction = % completely or very satisfied

	Central	Isle of Wight	North & East	Portsmouth	Southampton	Western	Total
%	65%	100%	59%	67%	70%	63%	67%
Number of surveys	31	8	27	46	56	27	195

MSG information for user satisfaction

iQuanta data for MSG for the 12 months ending September 2010 (iQuanta calculate satisfaction % based on those responding that they are completely or very or fairly satisfied)

	Previous MSG position	Current MSG position	Change		Previous MSG position	Current MSG position	Change
Vehicle crime				Burglary			
Ease of contact	4/8	1/8	↑	Ease of contact	3/8	3/8	↔
Actions taken	4/8	4/8	↔	Actions taken	5/8	5/8	↔
Follow up	4/8	4/8	↔	Follow up	1/8	1/8	↔
Treatment	5/8	4/8	↑	Treatment	6/8	6/8	↔
Whole Experience	4/8	4/8	↔	Whole Experience	3/8	4/8	↓
Violent crime				RTC (minor injury)			
Ease of contact	5/8	4/8	↑	Ease of contact	1/8	1/8	↔
Actions taken	4/8	3/8	↑	Actions taken	2/8	2/8	↔
Follow up	6/8	6/8	↔	Follow up	1/8	1/8	↔
Treatment	6/8	6/8	↔	Treatment	2/8	2/8	↔
Whole Experience	4/8	6/8	↓	Whole Experience	3/8	3/8	↔

All users (excluding racist incidents)

Ease of contact	1/8	1/8	↔
Actions taken	2/8	2/8	↔
Follow up	1/8	1/8	↔
Treatment	5/8	4/8	↑
Whole Experience	3/8	3/8	↔

Force target areas for an active presence in every neighbourhood

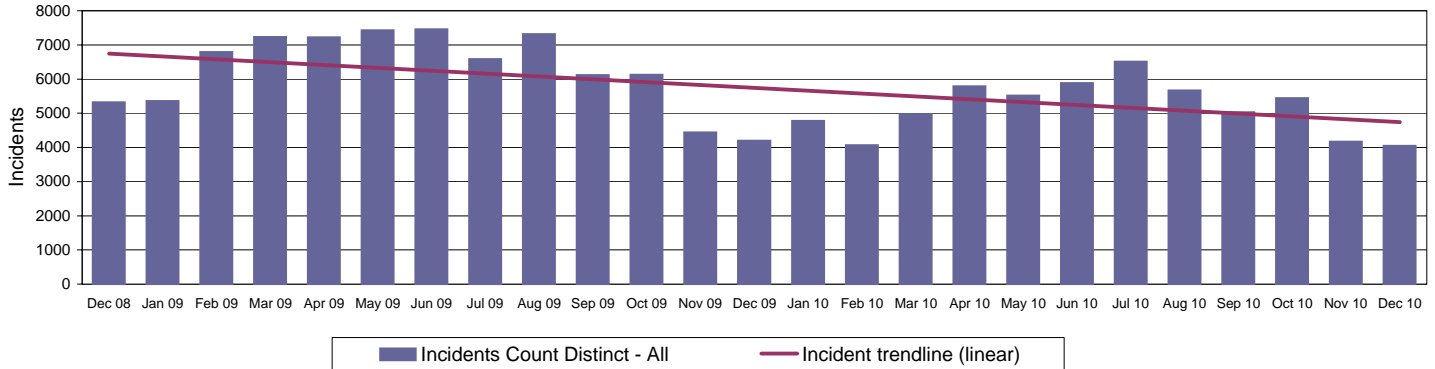
	Target	Actual	Central	Isle of Wight	North & East	Portsmouth	Southampton	Western
Rowdy & nuisance behaviour (inc Vehicle Nuisance)	52248	48053	8267	3305	9114	7867	11543	7957
	OCU specific targets		10350	3429	9653	8157	11686	8973
Reduce criminal damage	20657	18510	3805	1682	3519	2489	3754	3261
	OCU specific targets		4477	1523	4039	2667	4239	3712

Rowdy & nuisance behaviour (including vehicle)

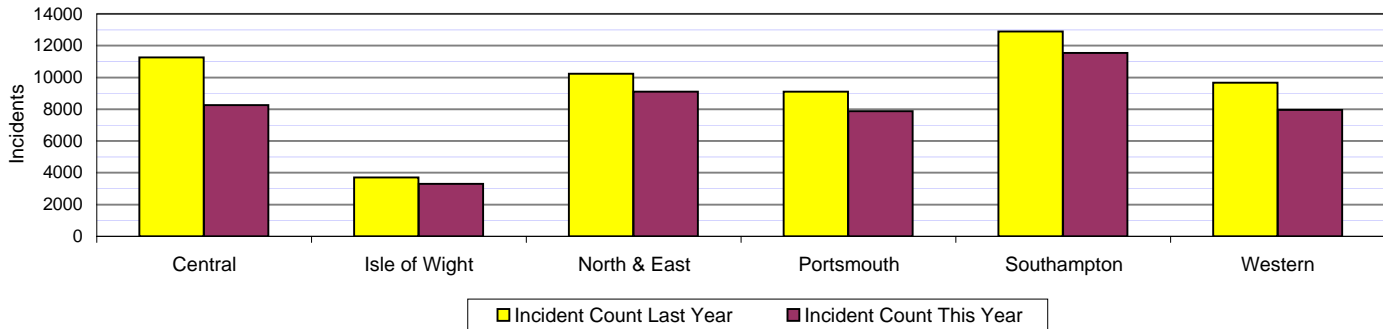
Force Target

In 2009-2010 Rowdy and nuisance included Inappropriate use of fireworks, Rowdy & inconsiderate, Substance misuse and Street drinking, with Vehicle related nuisance being a separate entity for monitoring purposes however the decision this year has been to bring all key nuisance elements into one section. This data is sourced from RMS and does not reflect the complete NSIR return for Hampshire.

This target is based on a subset of the anti-social behaviour categories, it does not cover all aspects of anti-social behaviour.

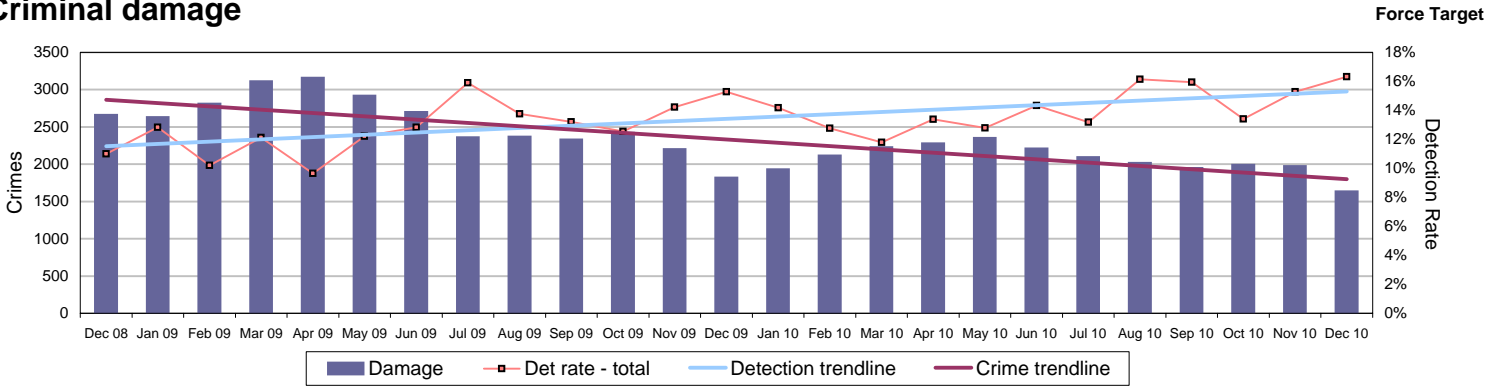


Incidents	Central	Isle of Wight	North & East	Portsmouth	Southampton	Western	Force
YTD Incidents	8267	3305	9114	7867	11543	7957	48053
YTD Target	10350	3429	9653	8157	11686	8973	52248
YTD 09/10 Incidents	11256	3716	10241	9113	12894	9668	56888
This month	591	252	915	636	927	725	4046
% change from 09/10	-26.55%	-11.06%	-11.00%	-13.67%	-10.48%	-17.70%	-15.53%

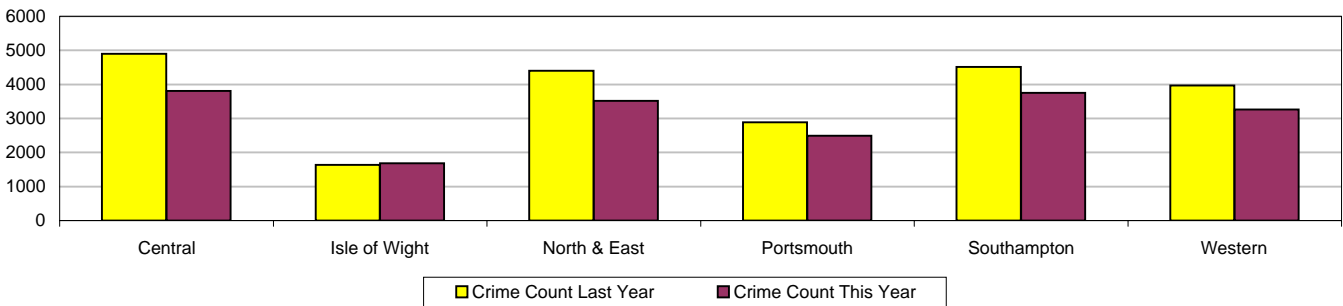


Force target areas for an active presence in every neighbourhood

Criminal damage

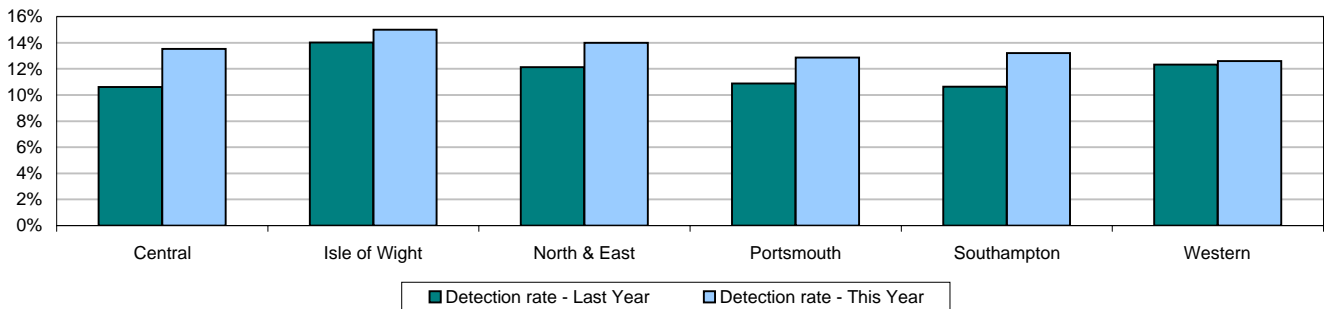


Crimes	Central	Isle of Wight	North & East	Portsmouth	Southampton	Western	Force
YTD Crimes	3805	1682	3519	2489	3754	3261	18510
YTD Target	4477	1523	4039	2667	4239	3712	20657
YTD 09/10 Crimes	4897	1633	4400	2885	4511	3971	22297
This month	360	139	318	210	310	299	1636
% change from 09/10	-22.30%	3.00%	-20.02%	-13.73%	-16.78%	-17.88%	-16.98%
MSG position	10 of 15	15 of 15	10 of 15	10 of 15	13 of 15	7 of 15	8 of 8
MSG actual	2.615	3.865	2.604	3.877	5.176	2.587	3.161
MSG average	2.623	3.12	2.543	3.711	4.069	2.619	2.93



Detections	Central	Isle of Wight	North & East	Portsmouth	Southampton	Western	Force
YTD Detection Rate	13.52%	14.98%	13.98%	12.87%	13.21%	12.59%	13.42%
This month	13.32%	14.35%	16.17%	12.67%	16.25%	11.56%	14.16%
YTD 09/10 Detections	10.61%	14.01%	12.12%	10.89%	10.64%	12.32%	11.48%
MSG position	10 of 15	3 of 15	9 of 15	2 of 15	7 of 15	7 of 15	6 of 8
MSG actual	12.74%	17.96%	13.35%	15.18%	13.81%	13.15%	13.93%
MSG average	13.35%	14.71%	13.80%	13.20%	14.08%	13.27%	14.09%

Note: Detections refer to Sanction Detections ONLY



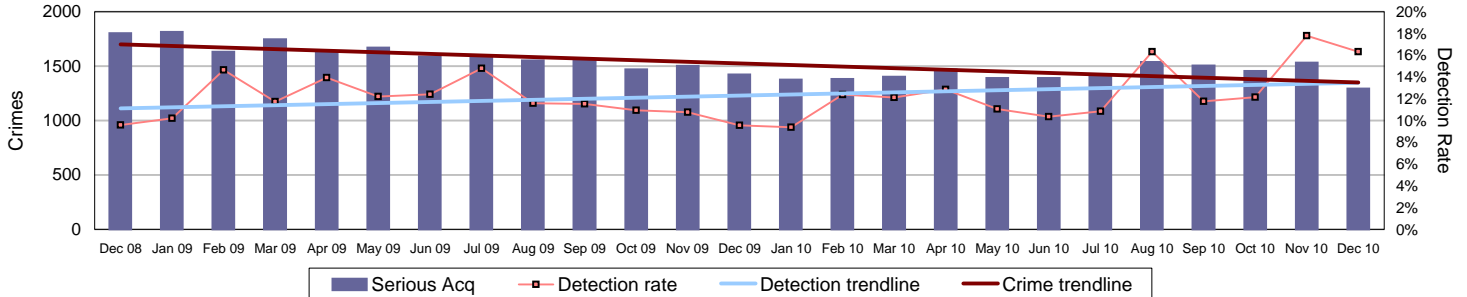
Force target areas for catching criminals and managing offenders

	Target	Actual	Central	Isle of Wight	North & East	Portsmouth	Southampton	Western
Serious acquisitive detection rate	15%	13.3%	15.28%	15.94%	16.57%	10.28%	11.50%	12.78%
OCG disruptions	40%	183%	Owned by Crime OCU					

Serious acquisitive crime

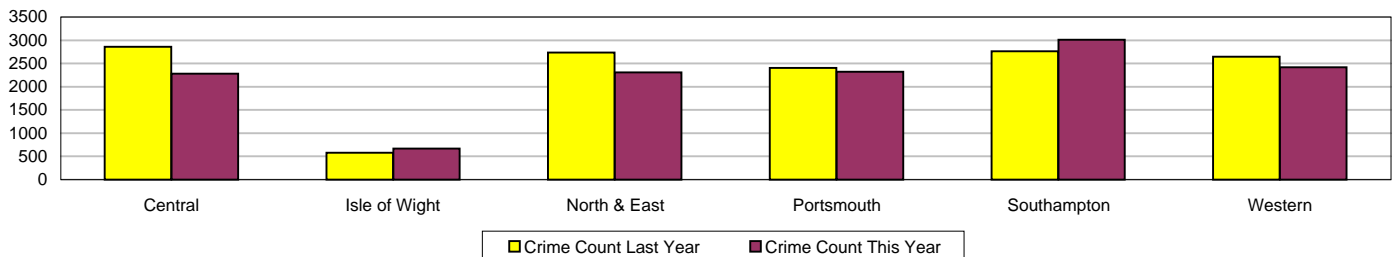
APACS 5.2 Force Target

Serious acquisitive crime consists of crimsec codes 28, 29, 34A, 34B, 37/2, 45 and 48



Crimes

	Central	Isle of Wight	North & East	Portsmouth	Southampton	Western	Force
YTD Crimes	2278	665	2306	2325	3010	2417	13001
YTD 09/10 Crimes	2861	582	2733	2404	2766	2646	13992
This month	180	69	256	255	324	209	1293
% change from 09/10	-20.38%	14.26%	-15.62%	-3.29%	8.82%	-8.65%	-7.08%
MSG actual	4 of 15	3 of 15	5 of 15	4 of 15	11 of 15	12 of 15	2 of 8
MSG average	1.693	1.476	1.762	3.779	4.656	2.139	2.393
MSG average	2.251	2.079	2.209	4.456	4.163	1.983	2.829

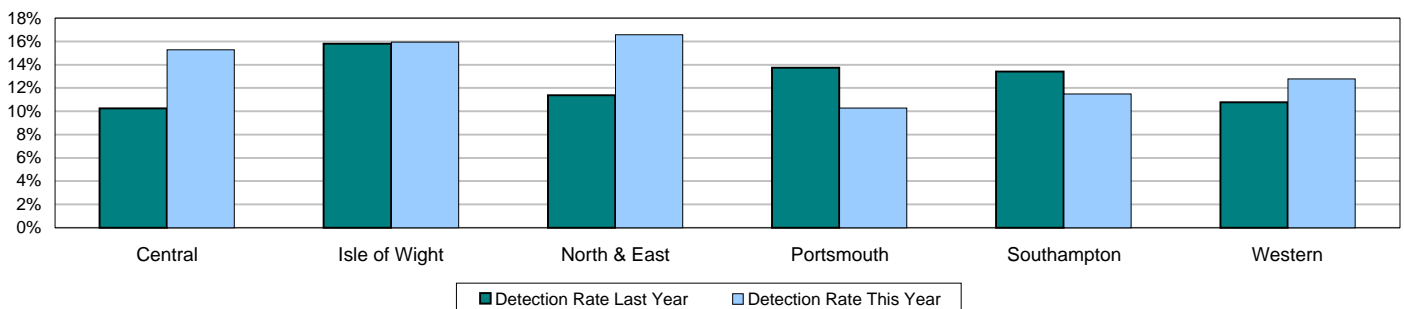


Detections

Target >15%

	Central	Isle of Wight	North & East	Portsmouth	Southampton	Western	Force
YTD Detection Rate	15.28%	15.94%	16.57%	10.28%	11.50%	12.78%	13.31%
This month	8.89%	7.25%	21.48%	11.76%	10.19%	34.45%	16.32%
YTD 09/10 Detections	10.24%	15.81%	11.38%	13.73%	13.41%	10.77%	12.02%
MSG position	11 of 15	8 of 15	9 of 15	11 of 15	12 of 15	13 of 15	4 of 8
MSG actual	13.18%	16.15%	12.95%	11.41%	11.93%	10.75%	12.23%
MSG average	14.15%	17.16%	13.42%	13.15%	15.55%	14.08%	13.28%

Note: Detections refer to Sanction Detections ONLY



Force target areas for catching criminals and managing offenders

Serious acquisitive crime breakdown

Robbery

Year to date	Central	Isle of Wight	North & East	Portsmouth	Southampton	Western	Force
Crimes	72	22	152	201	318	78	843
09/10 crimes	77	15	136	177	285	103	793
% change from 09/10	-6.49%	46.67%	11.76%	13.56%	11.58%	-24.27%	6.31%
MSG position	6 of 15	4 of 15	11 of 15	4 of 15	12 of 15	9 of 15	3 of 8
Detection rate	30.56%	40.91%	19.74%	16.42%	22.33%	25.64%	21.95%
MSG position	6 of 15	2 of 15	13 of 15	14 of 15	10 of 15	11 of 15	4 of 8
Dec 2010							
Crimes	11	3	17	28	33	5	97
Detection rate	18.18%	33.33%	0.00%	10.71%	12.12%	20.00%	11.34%

Dwelling burglary

Year to date	Central	Isle of Wight	North & East	Portsmouth	Southampton	Western	Force
Crimes	617	223	678	690	1033	550	3790
09/10 crimes	873	196	872	735	823	688	4187
% change from 09/10	-29.32%	13.78%	-22.25%	-6.12%	25.52%	-20.06%	-9.46%
MSG position	2 of 15	4 of 15	4 of 15	3 of 15	11 of 15	4 of 15	2 of 8
Detection rate	20.91%	13.45%	13.72%	12.61%	17.04%	19.45%	16.41%
MSG position	10 of 15	14 of 15	15 of 15	9 of 15	10 of 15	5 of 15	4 of 8
Dec 2010							
Crimes	64	23	102	65	136	62	452
Detection rate	9.38%	4.35%	16.67%	10.77%	10.29%	25.81%	13.50%

Vehicle crime

Year to date	Central	Isle of Wight	North & East	Portsmouth	Southampton	Western	Force
Crimes	1590	420	1476	1434	1659	1789	8368
09/10 crimes	1911	371	1725	1492	1658	1855	9012
% change from 09/10	-16.80%	13.21%	-14.43%	-3.89%	0.06%	-3.56%	-7.15%
MSG position	8 of 15	2 of 15	4 of 15	8 of 15	10 of 15	14 of 15	3 of 8
Detection rate	12.39%	15.95%	17.55%	8.30%	5.97%	10.17%	11.03%
MSG position	10 of 15	6 of 15	4 of 15	9 of 15	13 of 15	13 of 15	5 of 8
Dec 2010							
Crimes	105	43	137	162	155	142	744
Detection rate	7.62%	6.98%	27.74%	12.35%	9.68%	38.73%	18.68%
Detection numbers	8	3	38	20	15	55	139

Theft of a motor vehicle

Year to date	Central	Isle of Wight	North & East	Portsmouth	Southampton	Western	Force
Crimes	317	100	369	203	414	298	1701
MSG position	7 of 15	3 of 15	10 of 15	1 of 15	14 of 15	4 of 15	2 of 8
Detection rate	18.93%	32.00%	23.58%	14.78%	9.90%	20.47%	18.28%
MSG position	9 of 15	3 of 15	5 of 15	8 of 15	13 of 15	11 of 15	4 of 8
Dec 2010							
Crimes	20	6	40	17	34	30	147
Detection rate	20.00%	33.33%	42.50%	17.65%	20.59%	40.00%	30.61%
Detection numbers	4	2	17	3	7	12	45

Theft from a motor vehicle

Year to date	Central	Isle of Wight	North & East	Portsmouth	Southampton	Western	Force
Crimes	1273	320	1107	1231	1245	1491	6667
MSG position	9 of 15	3 of 15	4 of 15	12 of 15	8 of 15	14 of 15	5 of 8
Detection rate	10.76%	10.94%	15.54%	7.23%	4.66%	8.12%	9.18%
MSG position	10 of 15	8 of 15	4 of 15	9 of 15	12 of 15	13 of 15	5 of 8
Dec 2010							
Crimes	85	37	97	145	121	112	597
Detection rate	4.71%	2.70%	21.65%	11.72%	6.61%	38.39%	15.75%
Detection numbers	4	1	21	17	8	43	94

Robbery, dwelling burglary and vehicle crime are the component parts of serious acquisitive crime. These individual crime types do not have targets.

Number of Organised Crime Groups (OCGs) disrupted

Force Target

The Force target for 2010/11 is to dismantle or disrupt at least 40% of identified organised crime groups as a result of police or multi agency activity.

YTD Dec 2010	2009/2010	2010/2011	Disrupted
Number of OCGs identified and mapped	45	6	
Number of OCGs disrupted or partially disrupted through Crime OCU activity	31	11	183%

Force target areas for catching criminals and managing offenders

Number of OCGs subject to tactical activity	92	78	
---	----	----	--

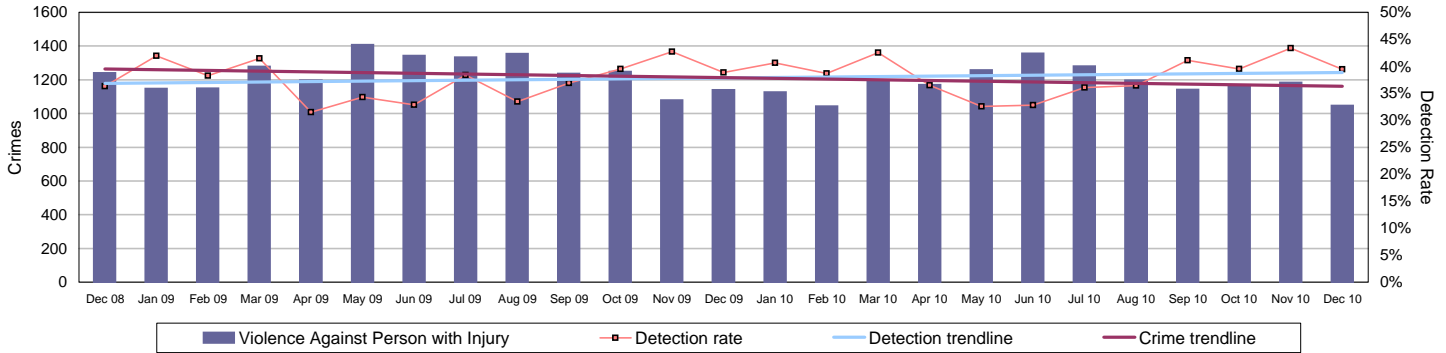
Force target areas for protecting our communities

	Target	Actual	Central	Isle of Wight	North & East	Portsmouth	Southampton	Western
Reduction of VAP with injury	10798	10799	2197	958	1657	1999	2425	1563
	OCU specific targets		2193	738	1780	1929	2514	1644
Reduction in dwelling burglary	4023	3791	617	223	678	690	1033	550
	OCU specific targets		790	192	846	740	765	689

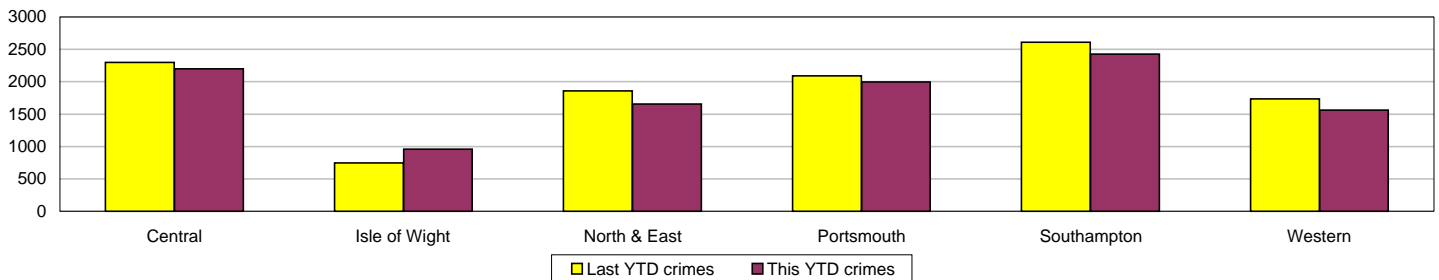
Violence against the person (VAP) with injury

Force Target

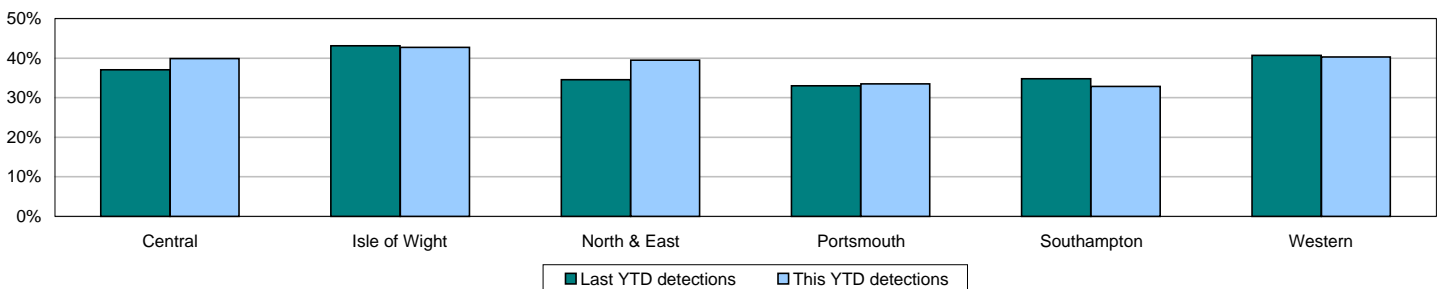
VAP with injury crimsec codes 1, 2, 4.1-4.4, 4.6-4.10, 5A, 5B, 5C, 8F, 8G, 8H, 8J, 8K and 37.1



Crimes	Central	Isle of Wight	North & East	Portsmouth	Southampton	Western	Force
YTD Crimes	2197	958	1657	1999	2425	1563	10799
YTD Target	2193	738	1780	1929	2514	1644	10798
YTD 09/10 Crimes	2299	747	1859	2092	2612	1736	11345
This month	201	79	148	216	254	149	1047
% change from 09/10	-4.44%	28.25%	-10.87%	-4.45%	-7.16%	-9.97%	-4.81%
MSG position	15 of 15	14 of 15	8 of 15	14 of 15	14 of 15	10 of 15	8 of 8
MSG actual	1.632	2.161	1.144	3.292	3.389	1.24	1.875
MSG average	1.221	1.553	1.147	2.063	2.283	1.18	1.416



Detections	Central	Isle of Wight	North & East	Portsmouth	Southampton	Western	Force
YTD Detection Rate	39.87%	42.69%	39.47%	33.52%	32.82%	40.31%	37.36%
This month	43.28%	37.97%	43.24%	38.43%	31.89%	45.64%	39.45%
YTD 09/10 Detections	37.02%	43.11%	34.53%	33.03%	34.76%	40.67%	36.32%
MSG position	11 of 15	6 of 15	11 of 15	10 of 15	12 of 15	9 of 15	6 of 8
MSG actual	38.74%	44.66%	39.65%	34.64%	34.60%	41.13%	38.02%
MSG average	41.94%	43.40%	42.64%	38.26%	39.93%	42.44%	41.65%

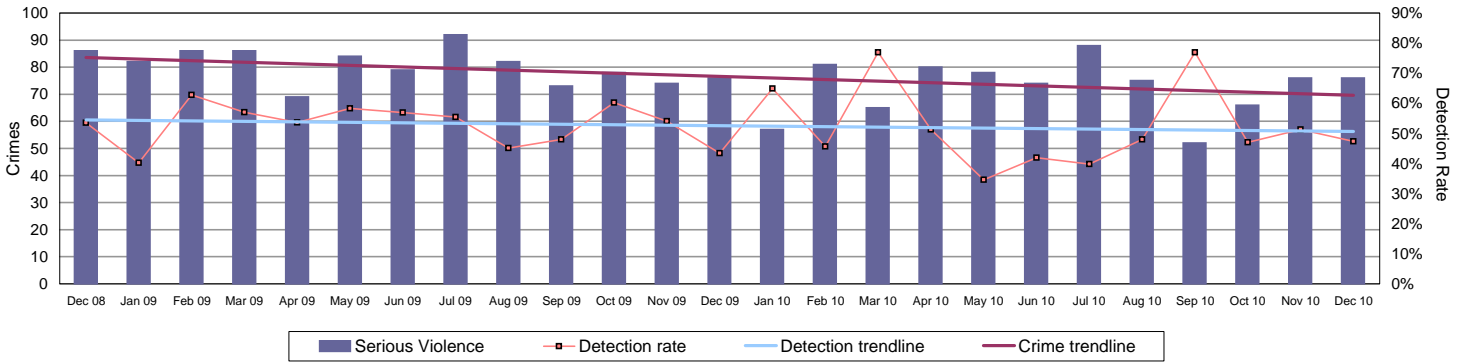


Force target areas for protecting our communities

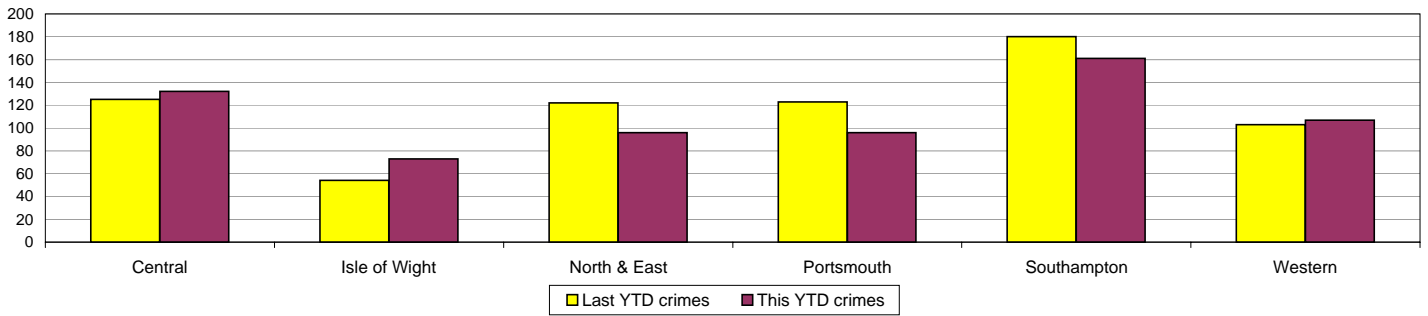
Serious violent crime

APACS 5.1

Serious violent crime consists of crimsec codes 1, 2, 4.1-4.4, 4.6, 4.8, 5A, 5B, 5C, 8F, 8H and 37.1

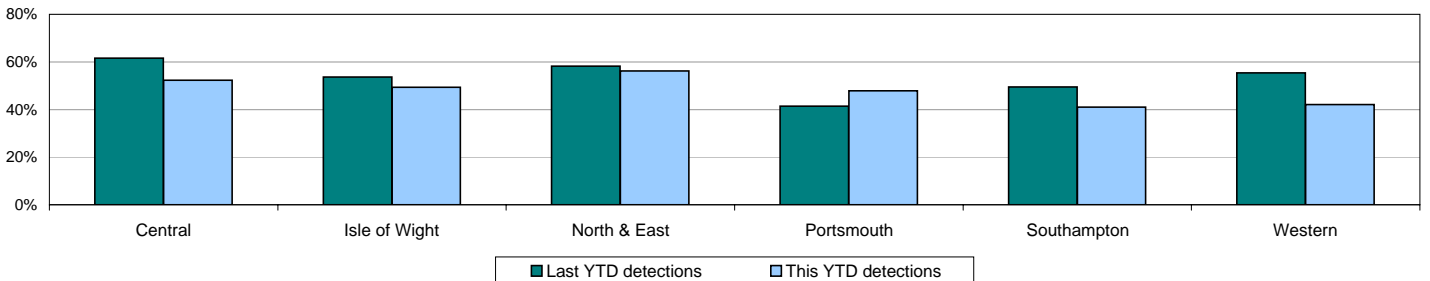


Crimes	Central	Isle of Wight	North & East	Portsmouth	Southampton	Western	Force
YTD Crimes	132	73	96	96	161	107	665
YTD 09/10 Crimes	125	54	122	123	180	103	707
This month	16	8	7	15	22	8	76
% change from 09/10	5.60%	35.19%	-21.31%	-21.95%	-10.56%	3.88%	-5.94%
MSG position	11 of 15	8 of 15	4 of 15	4 of 15	9 of 15	7 of 15	6 of 8
MSG actual	0.086	0.128	0.048	0.162	0.22	0.071	0.102
MSG average	0.093	0.116	0.08	0.201	0.215	0.074	0.097



Detections	Central	Isle of Wight	North & East	Portsmouth	Southampton	Western	Force
YTD Detection Rate	52.27%	49.32%	56.25%	47.92%	40.99%	42.06%	47.52%
This month	37.50%	25.00%	57.14%	53.33%	45.45%	75.00%	47.37%
YTD 09/10 Detections	61.60%	53.70%	58.20%	41.46%	49.44%	55.34%	52.90%
MSG position	9 of 15	9 of 15	10 of 15	9 of 15	8 of 15	15 of 15	5 of 8
MSG actual	55.28%	51.72%	53.38%	46.62%	48.47%	44.67%	49.88%
MSG average	59.19%	54.17%	56.02%	48.10%	50.87%	61.89%	50.15%

Note: Detections refer to Sanction Detections ONLY

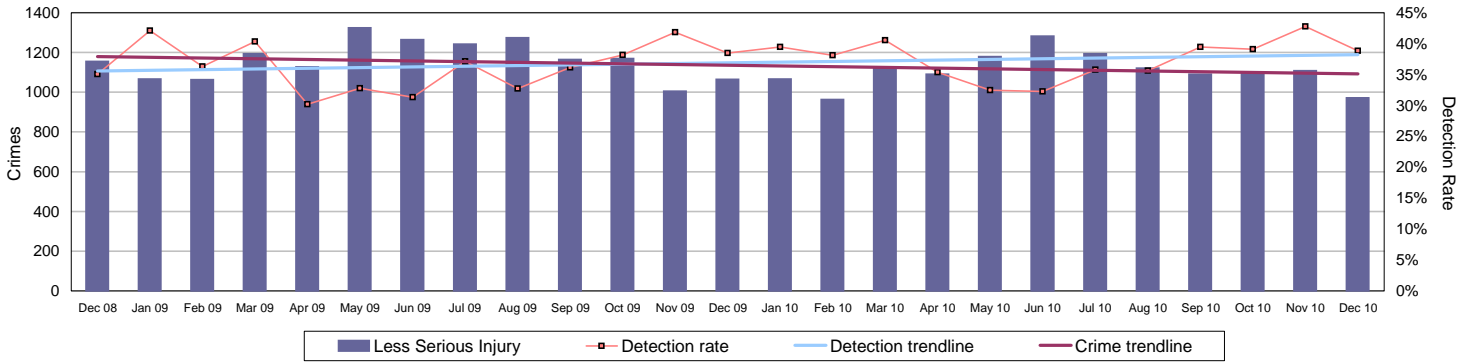


Force target areas for protecting our communities

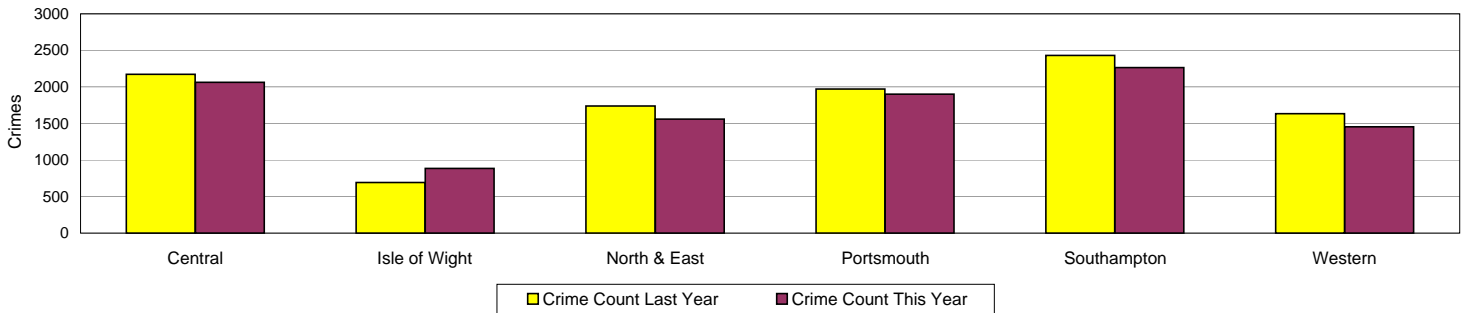
Assault with less serious injury

APACS 5.3

Assault with less serious injury consists of crimsec codes 8G and 8J

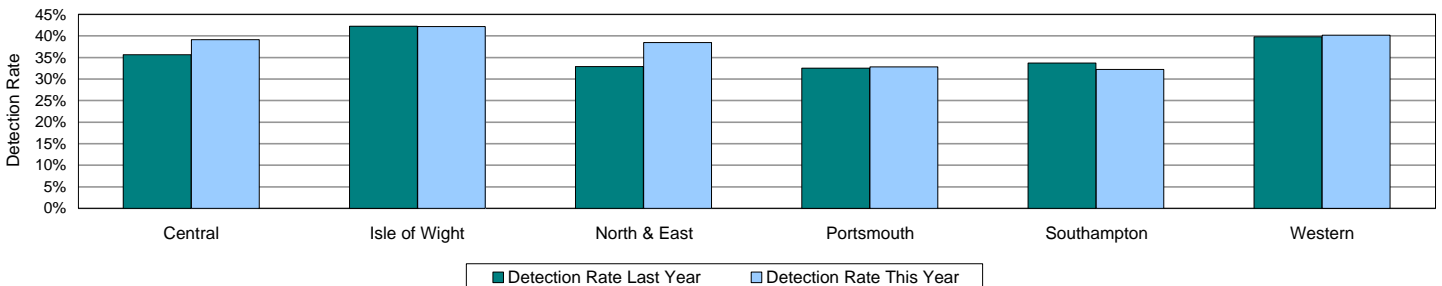


Crimes	Central	Isle of Wight	North & East	Portsmouth	Southampton	Western	Force
YTD Crimes	2063	885	1561	1902	2264	1455	10130
YTD 09/10 Crimes	2173	693	1737	1969	2431	1632	10635
This month	185	71	141	201	232	141	971
% change from 09/10	-5.06%	27.71%	-10.13%	-3.40%	-6.87%	-10.85%	-4.75%
MSG position	15 of 15	14 of 15	8 of 15	14 of 15	14 of 15	10 of 15	8 of 8
MSG actual	1.544	2.032	1.096	3.125	3.169	1.167	1.771
MSG average	1.127	1.437	1.066	1.86	2.067	1.106	1.319



Detections	Central	Isle of Wight	North & East	Portsmouth	Southampton	Western	Force
YTD Detection Rate	39.12%	42.15%	38.44%	32.81%	32.24%	40.14%	36.70%
This month	43.78%	39.44%	42.55%	37.31%	30.60%	43.97%	38.83%
YTD 09/10 Detections	35.62%	42.28%	32.87%	32.50%	33.69%	39.77%	35.22%
MSG position	11 of 15	6 of 15	11 of 15	10 of 15	12 of 15	9 of 15	6 of 8
MSG actual	37.80%	44.10%	38.77%	34.04%	33.70%	40.84%	37.27%
MSG average	40.87%	42.55%	41.88%	37.24%	38.84%	41.27%	41.07%

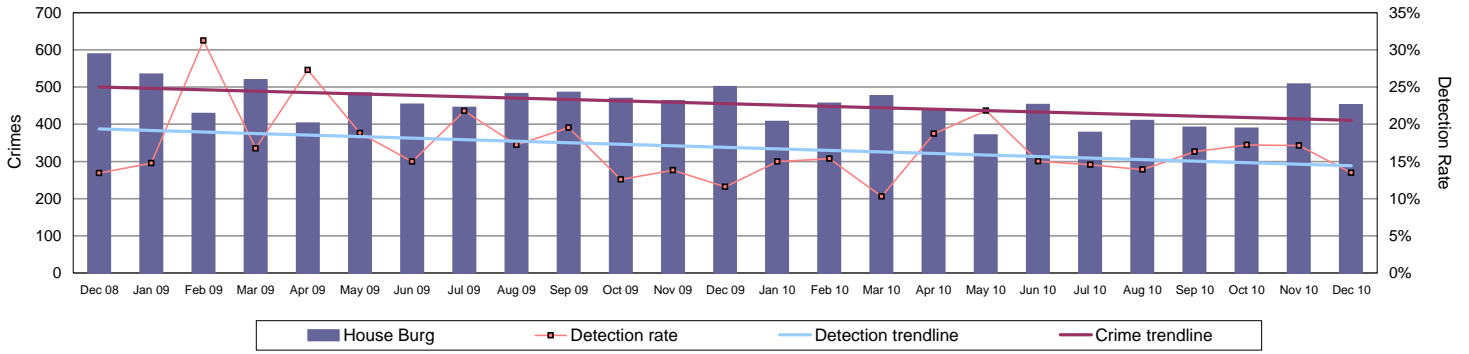
Note: Detections refer to Sanction Detections ONLY



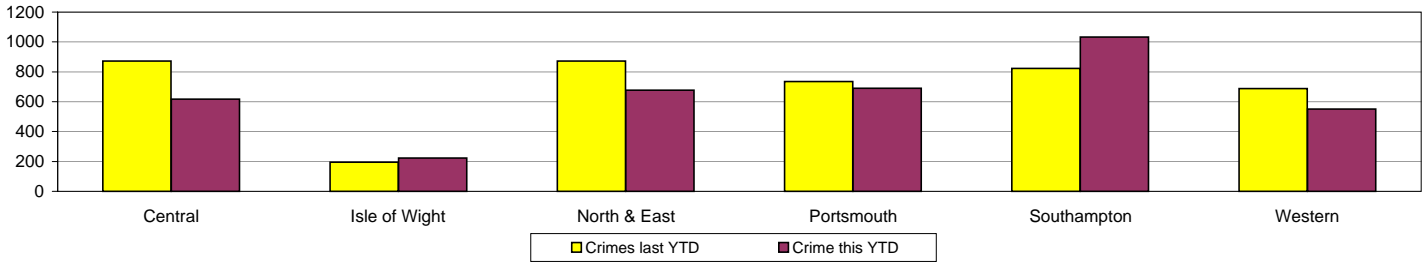
Force target areas for protecting our communities

Reduction in Dwelling Burglary

Force Target

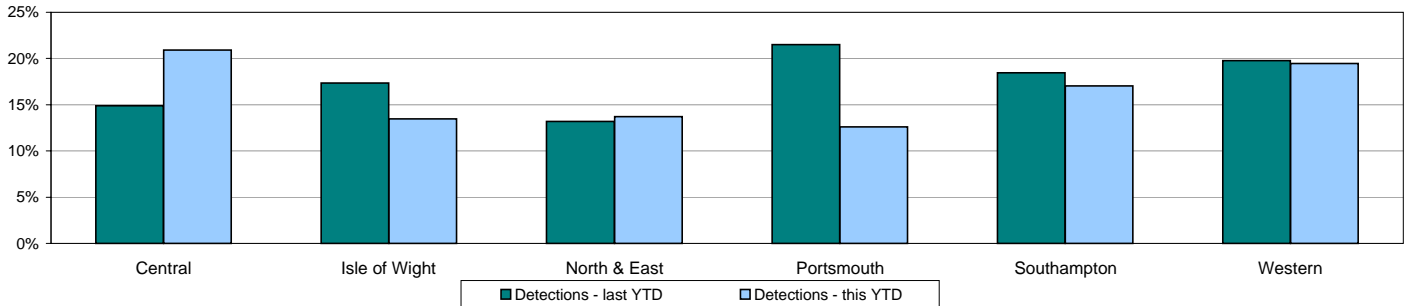


Crimes	Central	Isle of Wight	North & East	Portsmouth	Southampton	Western	Force
YTD Crimes	617	223	678	690	1033	550	3791
YTD Target	790	192	846	740	765	689	4023
YTD 09/10 Crimes	873	196	872	735	823	688	4187
This month	64	23	102	65	136	62	452
% change from 09/10	-29.32%	13.78%	-22.25%	-6.12%	25.52%	-20.06%	-9.46%
MSG position	2 of 15	4 of 15	4 of 15	3 of 15	11 of 15	4 of 15	2 of 8
MSG actual	0.995	1.248	1.29	4.094	3.819	1.167	1.639
MSG average	1.833	1.644	1.805	2.426	3.547	1.611	2.405



Detections	Central	Isle of Wight	North & East	Portsmouth	Southampton	Western	Force
YTD Detection Rate	20.91%	13.45%	13.72%	12.61%	17.04%	19.45%	16.41%
This month	9.38%	4.35%	16.67%	10.77%	10.29%	25.81%	13.50%
YTD 09/10 Detections	14.89%	17.35%	13.19%	21.50%	18.47%	19.77%	17.32%
MSG position	10 of 15	14 of 15	15 of 15	9 of 15	10 of 15	5 of 15	4 of 8
MSG actual	17.09%	13.91%	10.91%	14.95%	16.36%	19.46%	15.19%
MSG average	18.25%	20.00%	17.70%	13.28%	18.12%	18.22%	16.85%

Note: Detections refer to Sanction Detections ONLY



Force target areas for making the most of our resources

Force target areas for equipping our staff to deliver

	Target	Actual	Central	Isle of Wight	North & East	Portsmouth	Southampton	Western
BME recruitment	5% of all recruits	5.2%	This is a Force measure					

	Target	Actual	Central	Isle of Wight	North & East	Portsmouth	Southampton	Western
Staff confidence in the organisation	61%	data unavailable	Data unavailable					

Minority ethnic recruitment

Force Target

The 2010/11 target is based on all police staff and police officer recruits. Data published previously has related only to police officer recruitment.

	All recruits	Minority ethnic recruits	Percentage
YTD Dec 2010	210	11	5.2%

Minority ethnic police officer recruitment

APACS 3.1

	All recruits	Minority ethnic recruits	Percentage
YTD Dec 2010	59	6	10.2%

Minority ethnic police staff recruitment (incl PCSOs)

	All recruits	Minority ethnic recruits	Percentage
YTD Dec 2010*	151	5	3.3%

Note: * headcount, recruits only

Female officer representation

APACS 3.2

	Male strength	Female strength	Percentage
YTD Dec 2010	2592.8	1024.2	28.32%

Staff confidence in the organisation

Force Target

This is a new target area for 2010/11 based up on the results of the staff survey. The initial staff survey was undertaken in May 2010. This survey provided a baseline figure on which a target could be established. The agreed target questions is: "Taking everything into consideration I am satisfied with my job". The results of the May survey showed 59% of those who responded to the survey agreed or strongly agreed with this statement. It was therefore agreed that a suitable target for 2010/11 is to achieve at least 61% the next time the survey is undertaken. It is currently proposed that the next survey is undertaken in May 2011.

Monitoring information for providing an excellent service

Letters of appreciation

	Central	Isle of Wight	North & East	Portsmouth	Southampton	Western	Crime	Operations	Other	Total
April 2010	2	5	12	2	16	7	-	5	-	49
May 2010	17	3	15	10	19	12	1	4	-	81
June 2010	11	7	19	8	6	15	-	7	-	73
July 2010	42	8	21	6	17	11	-	4	-	109
August 2010	21	5	19	6	15	24	-	4	-	94
September 2010	9	12	6	7	14	5	-	6	-	59
October 2010	9	8	17	8	-	6	-	7	-	55
November 2010	22	9	17	8	11	3	-	16	-	86
December 2010	3	4	7	2	6	1	-	6	-	29
Total	136	61	133	57	104	84	1	59	0	635

Reports of incivility

	Central	Isle of Wight	North & East	Portsmouth	Southampton	Western	Crime	Operations	Other	Total
April 2010	3	3	6	2	3	4	0	1	0	22
May 2010	4	1	2	2	4	2	0	1	0	16
June 2010	4	0	3	2	3	5	2	1	1	21
July 2010	3	4	4	6	5	2	0	1	0	25
August 2010	5	2	1	2	2	1	0	0	2	15
September 2010	3	4	4	0	5	5	2	2	0	25
October 2010	4	5	1	1	1	1	0	0	0	13
November 2010	10	1	5	1	38*	7	3	2	0	29
December 2010	3	1	3	2	1	4	0	3	3	20
Total	39	21	29	18	62	31	7	11	6	186

NOTE: OCU complaints totals may include complaints regarding officers who are serving within the area but are not located at that OCU

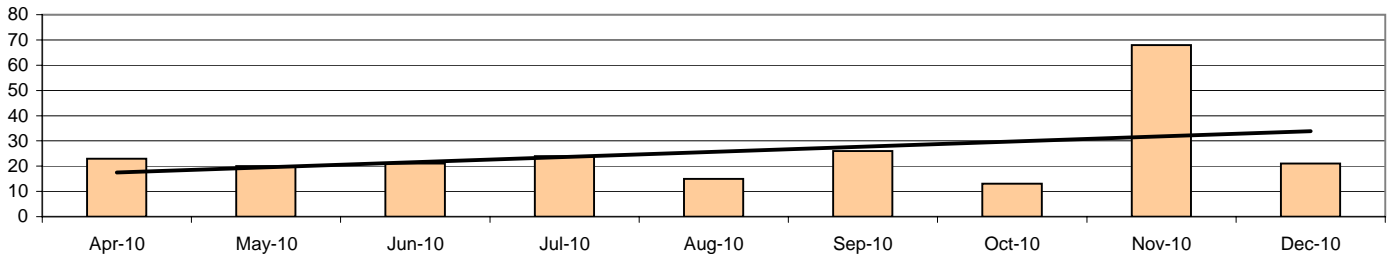
NOTE: Data/figures may change due to additional or new information and there may be multiple allegations per complaint

NOTE: Data/figures may vary between the above chart and below graph as some allegations have not been allocated to the OCU at the time of recording

* (one complaint contained 33 allegations)

By month	Apr-10	May-10	Jun-10	Jul-10	Aug-10	Sep-10	Oct-10	Nov-10	Dec-10
Incivility	23	20	21	24	15	26	13	68	21

Force total incivility allegations April 10-Dec 10



Allegations and their resolutions - for Dec 2010

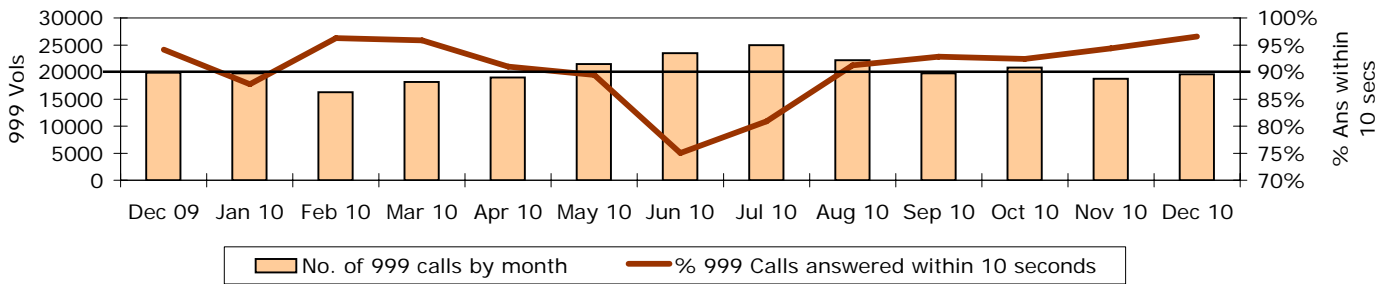
Locally resolved by OCU	50
Locally resolved by PSD	8
Withdrawn	9
Dispensed by IPCC	11
Not upheld by OCU	37
Not upheld by PSD	7
Unsubstantiated	21
Upheld by OCU	11
Substantiated	19

Monitoring information for providing an excellent service

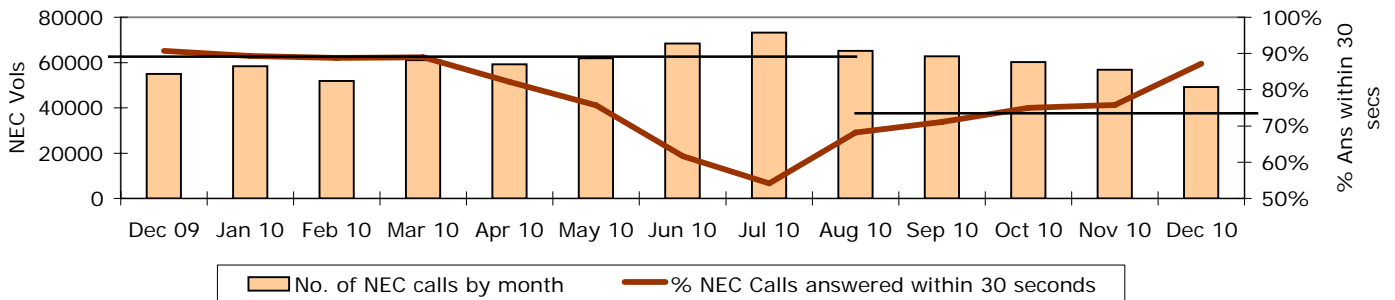
Responding to public contact

Call Volumes: Target is to answer 90% of 999 calls within 10 seconds and 90% of Non-Emergency calls within 30 seconds.

999 Call Volumes & Service Level

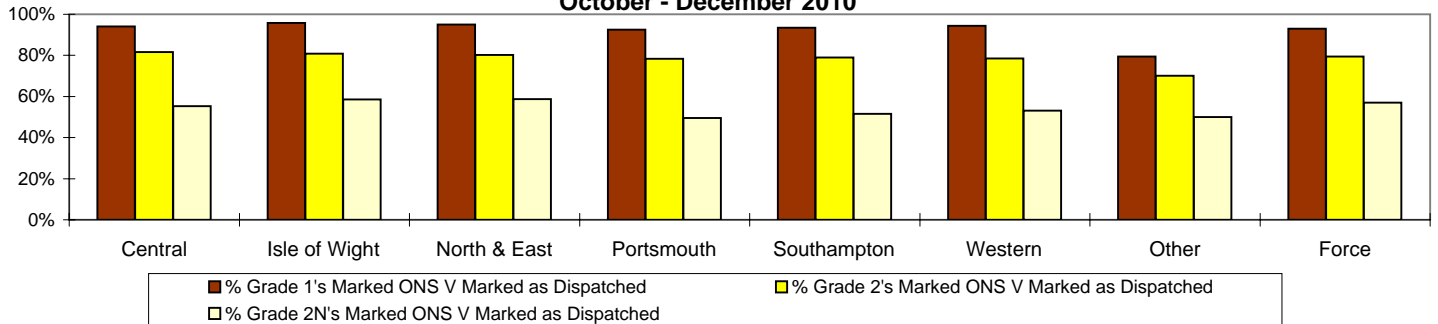


Non-Emergency Call Volumes & Service Level

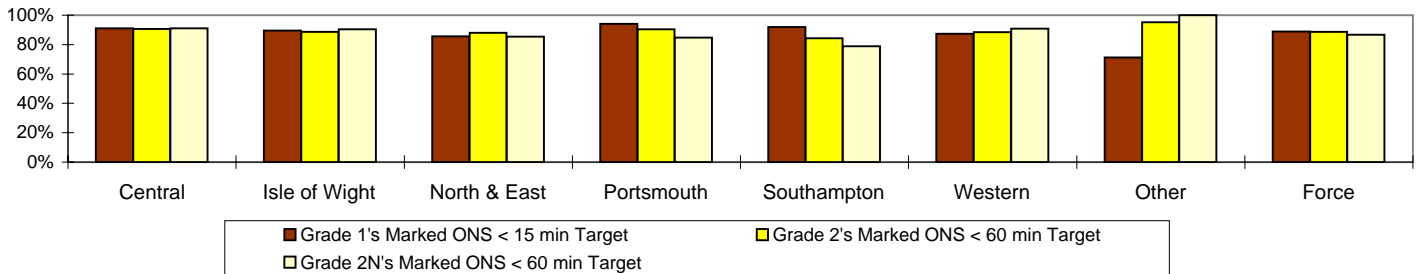


Officers attended within target: This is the time from an incident being created to the 1st Officer being marked on scene on Altaris. The % of Officers attending within target is based on the number of incidents marked on scene within target vs. the number of incidents marked on scene. If an incident is marked as having an officer dispatched, but is then subsequently not marked as On Scene, these incidents are excluded from the % Attendance.

% Incidents Marked On Scene V's Incidents Marked As Dispatched - October - December 2010



% Grade 1 & Grade 2 Incidents Attended Within Target - October - December 2010



Use of scheduled appointments

Q1 Jul-Sept10	Available Slots	Withdrawn by OCU	% Withdrawn	No. Actual Available	Appoint.'s Scheduled	% Appoint.'s Used
Central	2,163	295	14%	1,868	845	45%
Isle of Wight	519	29	6%	490	423	86%
North & East	1,135	269	24%	866	446	52%
Portsmouth	695	411	59%	284	270	95%
Southampton	1,797	173	10%	1,624	454	28%
Western	931	299	32%	632	348	55%
Force	7,240	1,476	20%	5,764	2,786	48%

Monitoring information for an active presence in every neighbourhood

Safer Neighbourhood Teams (SNT)

Abstractions	Central	Isle of Wight	North & East	Portsmouth	Southampton	Western	Force
April 2010	0.87%	1.84%	2.49%	3.22%	1.82%	2.56%	2.05%
May 2010	2.69%	1.80%	1.46%	1.23%	1.68%	3.36%	2.15%
June 2010	4.32%	7.62%	4.30%	2.56%	3.01%	4.23%	4.09%
July 2010	3.30%	3.56%	9.76%	1.72%	1.82%	3.90%	4.30%
Aug 2010	2.75%	5.93%	2.16%	1.30%	2.16%	2.34%	2.90%
Sept 2010	3.22%	5.95%	5.27%	1.10%	2.57%	2.50%	4.54%
Oct 2010	2.62%	1.47%	7.26%*	1.96%	1.93%	3.49%	4.14%
Nov 2010	2.24%	2.81%	6.79%*	0.46%	3.93%*	2.17%	3.53%
Dec 2010	3.11%	3.07%	8.46%*	0.78%	4%*	1.81%	4.17%

Note: * - not checked by OCU yet

Target = maximum 5% abstractions

In August 2009 a review of abstraction data was undertaken to ensure a consistent approach was used across the Force. Prior to this date individual OCUs used slightly differing methodology therefore it is not possible to compare the data for April - July with data from August onwards, or to compare the data for individual OCU's with one another prior to August.

Safer Neighbourhood Team personnel data

	Central	Isle of Wight	North & East	Portsmouth	Southampton	Western	Force
Inspector	9	2	10	4	5	8	38
Sergeant	26	10	16	9	12	15	88
Constable	94	30	86	39	61	87	397
PCSO	75	28	69	49	59	65	345

SNT strength by OCU - Police

	Central	Isle of Wight	North & East	Portsmouth	Southampton	Western	Force
Strength	121.1	39.7	107.8	50.03	75.03	105.5	499.2

SNT establishment and strength by OCU - PCSOs

	Central	Isle of Wight	North & East	Portsmouth	Southampton	Western	Force
Establishment	74	28	67	50	59	59	337
Strength	75	27.3	68.2	47.8	58.7	63.9	340.9
Vacancies	-1	0.7	-1.2	2.2	0.3	-4.9	-3.9

Note: Personnel Planning are no longer able to provide 'length of service' information due to the implementation of the new organisation structure into Delphi. This has meant that all Staff and Police Officers have a position start date of 8 July 2009

Monitoring information for an active presence in every neighbourhood

Stop and Search

This page contains the first set of published data in relation to Stop and Search since changes were made to the processes in Hampshire Constabulary. All the data relates to Stops which took place from 16th August 2010 onwards, and were undertaken under specific powers, namely: Police and Criminal Evidence Act 1984 (PACE), Criminal Justice & Public Order Act 1994, Misuse of Drugs Act 1971, Firearms Act 1968 and Terrorism Act 2000

Breakdown of Stop & Search

16th Aug 10 - 31st Dec 10	Central	Isle of Wight*	North & East	Portsmouth	Southampton	Western	Other	Force
PACE Act	629	227	692	886	1492	626	42	4594
Misuse of Drugs Act	707	868	1407	895	1230	680	23	5810
Firearms Act	6	2	12	6	29	3	0	58
Other	1	0	1	16	5	6	0	29
Total	1343	1097	2112	1803	2756	1315	65	10491

* The Isle of Wight data is skewed by the Bestival during which period a large number of searches are undertaken, predominantly on a population from outside of the Isle of Wight. These stops are mainly drugs related.

Resulting Outcomes

16th Aug 10 - 31st Dec 10	Central	Isle of Wight	North & East	Portsmouth	Southampton	Western	Other	Force
No Further Action	1060	768	1659	1476	2255	1071	56	8345
Arrested	119	171	178	130	214	87	2	901
Cannabis Warning	66	103	98	65	100	63	1	496
Reported for Summons (from Nov 10)	4	0	1	1	6	1	0	13
Verbal Warning/Advice Given	67	28	77	71	110	55	6	414
Alcohol/Cigarettes Removed	6	18	18	8	20	15	0	85
Dispersal	4	1	5	2	12	3	0	27
Other	17	8	76	50	39	20	0	210
Total	1343	1097	2112	1803	2756	1315	65	10491

	Central	Isle of Wight	North & East	Portsmouth	Southampton	Western	Other	Force
% Arrested	8.86%	15.59%	8.43%	7.21%	7.76%	6.62%	3.08%	8.59%
% No Further Action	78.93%	70.01%	78.55%	81.86%	81.82%	81.44%	86.15%	79.54%