

Performance Profile

April 2009



2009/10 Reporting Year

This document contains a strategic overview of the Constabulary's performance. It has a variety of performance measures within it. The format of the profile has been aligned to the Policing Priorities identified by the Control Strategy. It provides information on our performance against Force targets, some of the APACS Statutory Performance Indicators (SPI) and the Policing Pledge. It also aims to provide supplementary information to assist in understanding reasons behind the performance in these areas. It has been designed as a headline document that will enable our customers, both internally and externally, to easily assess performance information for key domains

At the front of the document there are several matrices that reflect our performance against our targets, firstly year to date and secondly relevant for that particular month.

Performance in key areas is then explored in more depth with an indication of where each measure has originated - for example, APACS Statutory Performance Indicator (SPI) or a Force Control Strategy (FCS) measure.

This document is then taken forward by key stakeholders within the organisation to the Force Performance Review Group, where it is used to highlight areas of good performance and those for development.

This is an evolving document and as such, the content may alter over time and any feedback would be welcomed by the Performance Review Team.

Policing pledge summary data is being developed and will be displayed here in future months

Index

Page																		
Year to date performance matrix																		
4-5		including notes on matrices terminology																
Monthly performance matrix																		
6																		
Providing an excellent service																		
7	<table border="1" style="width: 100px;"> <tr><td style="text-align: center;">SPI 2.2</td><td style="text-align: center;">FCS</td></tr> <tr><td style="text-align: center;">SPI 1.1</td><td style="text-align: center;">FCS</td></tr> <tr><td style="text-align: center;">SPI 1.1</td><td style="text-align: center;">FCS</td></tr> <tr><td style="text-align: center;">SPI 1.1</td><td style="text-align: center;">FCS</td></tr> </table>	SPI 2.2	FCS	SPI 1.1	FCS	SPI 1.1	FCS	SPI 1.1	FCS	iQuanta - Quarterly Consultation & Research Team Consultation & Research Team Consultation & Research Team Consultation & Research Team								
SPI 2.2		FCS																
SPI 1.1		FCS																
SPI 1.1		FCS																
SPI 1.1		FCS																
7		British Crime Survey confidence data																
7		Local confidence survey data																
7		British Crime Survey supplementary data																
7		Overall satisfaction																
7		Being kept informed																
8	Responding to victims of crime (inc victim code compliance data)																	
9	Responding to public contact (inc call handling data)																	
10	Letters of appreciation, reports of incivility, expression of dissatisfaction																	
An active presence in every neighbourhood																		
11	<table border="1" style="width: 100px;"> <tr><td style="text-align: center;">FCS</td></tr> <tr><td style="text-align: center;">FCS</td></tr> <tr><td style="text-align: center;">FCS</td></tr> <tr><td style="text-align: center;">FCS</td></tr> </table>	FCS	FCS	FCS	FCS	Business Objects Business Objects Business Objects Business Objects												
FCS																		
FCS																		
FCS																		
FCS																		
11	Rowdy and nuisance behaviour																	
11	Vehicle nuisance/Inappropriate vehicle use																	
11	Neighbourhood Policing Team visibility																	
12	Criminal damage																	
Catching criminals and managing offenders																		
13	<table border="1" style="width: 100px;"> <tr><td style="text-align: center;">SPI 5.1</td><td style="text-align: center;">FCS</td></tr> <tr><td style="text-align: center;">SPI 6.4</td><td style="text-align: center;">FCS</td></tr> <tr><td style="text-align: center;">SPI 5.3</td><td style="text-align: center;">FCS</td></tr> <tr><td style="text-align: center;">SPI 5.2</td><td style="text-align: center;">FCS</td></tr> <tr><td style="text-align: center;">SPI 8.1</td><td style="text-align: center;">FCS</td></tr> <tr><td style="text-align: center;">SPI 10.1</td><td style="text-align: center;">FCS</td></tr> <tr><td style="text-align: center;">SPI 10.1</td><td style="text-align: center;">FCS</td></tr> <tr><td style="text-align: center;">SPI 10.1</td><td style="text-align: center;">FCS</td></tr> </table>	SPI 5.1	FCS	SPI 6.4	FCS	SPI 5.3	FCS	SPI 5.2	FCS	SPI 8.1	FCS	SPI 10.1	FCS	SPI 10.1	FCS	SPI 10.1	FCS	Business Objects Business Objects Criminal Justice Department Business Objects Business Objects Business Objects Business Objects Business Objects Business Objects Force Intelligence Criminal Justice Department Business Objects Force Intelligence 7 OCU Performance Team
SPI 5.1		FCS																
SPI 6.4		FCS																
SPI 5.3		FCS																
SPI 5.2		FCS																
SPI 8.1		FCS																
SPI 10.1		FCS																
SPI 10.1		FCS																
SPI 10.1		FCS																
14		All crime and sanction detections																
14		Serious violent crime and sanction detections																
14		Serious violent crime OBJ rate																
15		Assault with less serious injury																
16		Serious acquisitive crime and sanction detections																
17		Serious acquisitive crime breakdown																
18		Gun and knife crime																
18	Murder offences incl domestic murders																	
18	FIU1 submission levels																	
18	PPO convictions																	
18	Class A drugs sanction detections																	
18	Drug seizures																	
18	Organised Crime Groups																	
Protecting our communities																		
19	<table border="1" style="width: 100px;"> <tr><td style="text-align: center;">SPI 9.1</td><td style="text-align: center;">FCS</td></tr> <tr><td style="text-align: center;">SPI 1.2</td><td style="text-align: center;">FCS</td></tr> <tr><td style="text-align: center;">SPI 1.3</td><td style="text-align: center;">FCS</td></tr> </table>	SPI 9.1	FCS	SPI 1.2	FCS	SPI 1.3	FCS	Business Objects Business Objects 8 OCU Performance Team Consultation & Research Team Consultation & Research Team										
SPI 9.1		FCS																
SPI 1.2		FCS																
SPI 1.3		FCS																
19		Domestic violence and abuse																
19		Repeat incidents of domestic violence cases reviewed at MARAC																
19	Hate crime detection rate																	
20	Road traffic casualties																	
20	Comparative satisfaction of minority ethnic groups																	
20	Satisfaction of victims of racist incidents																	
Making the most of our resources																		
21	<table border="1" style="width: 100px;"> <tr><td style="text-align: center;">SPI 13.1</td><td style="text-align: center;">FCS</td></tr> <tr><td style="text-align: center;">SPI 13.2</td><td style="text-align: center;">FCS</td></tr> <tr><td style="text-align: center;">FCS</td></tr> <tr><td style="text-align: center;">FCS</td></tr> <tr><td style="text-align: center;">FCS</td></tr> <tr><td style="text-align: center;">FCS</td></tr> <tr><td style="text-align: center;">FCS</td></tr> <tr><td style="text-align: center;">FCS</td></tr> </table>	SPI 13.1	FCS	SPI 13.2	FCS	FCS	FCS	FCS	FCS	FCS	FCS	PRT - Delphi + Personnel - Staffing Figures PRT - Delphi + Personnel - Staffing Figures Personnel Force Incident & Crime Registrar Finance Finance						
SPI 13.1		FCS																
SPI 13.2		FCS																
FCS																		
FCS																		
FCS																		
FCS																		
FCS																		
FCS																		
22	Police officer sickness																	
22	Police staff sickness																	
23	Overdue PDRs																	
24	NCRS compliance - peer audits only																	
24	Budget spend																	
24	Efficiency savings																	
24	SO support to TO																	
Equipping our team to deliver																		
25	<table border="1" style="width: 100px;"> <tr><td style="text-align: center;">SPI 9.1</td><td style="text-align: center;">FCS</td></tr> <tr><td style="text-align: center;">SPI 3.1</td><td style="text-align: center;">FCS</td></tr> <tr><td style="text-align: center;">SPI 3.2</td><td style="text-align: center;">FCS</td></tr> </table>	SPI 9.1	FCS	SPI 3.1	FCS	SPI 3.2	FCS	8 OCU Performance Team Personnel Personnel										
SPI 9.1		FCS																
SPI 3.1		FCS																
SPI 3.2		FCS																
25		Financial awareness training																
25	Preparing for frontline supervision																	
25	Mobile data																	
25	Minority ethnic officer recruitment																	
25	Female officer representation																	
Restricted data																		

Year to date performance targets matrix

This matrix is based on year to date data compared to target

	Target	Actual	Central	Isle of Wight	North & East	Portsmouth	Southampton	Western
Providing an excellent service								
Confidence in local police	>51.3%	47.8%	This is a Force measure					
Overall satisfaction (data for rolling 12 months)	>65.0%	65.0%	66.0%	70.0%	64.0%	66.0%	61.0%	65.0%
An active presence in every neighbourhood								
Rowdy & nuisance behaviour	-5.0%	-8.6%	6.7%	7.8%	-11.1%	10.6%	5.9%	5.8%
Vehicle nuisance / inappropriate vehicle use	-5.0%	-24.3%	-11.2%	-10.0%	-18.8%	-28.3%	-12.7%	-30.9%
Reduce criminal damage	-5.0%	-4.5%	17.5%	10.1%	17.2%	6.7%	18.1%	8.1%

These measures are based on year to date data compared to the same period last year

Catching criminals & managing offenders								
All crime	-3.0%	-2.4%	7.6%	-4.6%	-16.0%	-16.0%	-22.9%	-4.2%
	OCU specific targets		-2.49%	-4.61%	-3.05%	-2.94%	-3.18%	-2.76%
All crime SD	>25%	22.2%	19.0%	25.0%	24.2%	25.4%	21.4%	21.2%
	OCU specific targets		25.0%	30.0%	25.5%	25.5%	25.0%	25.0%
Serious violent crime	-6.0%	25.4%	-15.2%	-3.1%	-6.9%	46.9%	29.5%	53.0%
	OCU specific targets		-12.16%	-7.15%	-6.52%	1.35%	-6.85%	4.94%
Serious violent crime SD	>50%	47.2%	41.7%	100.0%	54.5%	50.0%	24.0%	64.3%
	OCU specific targets		57.0%	60.0%	56.0%	41.0%	45.0%	50.0%
Assault with less serious injury	-5.0%	-5.4%	-11.1%	26.6%	-5.9%	22.0%	-8.7%	-11.7%
	OCU specific targets		-2.02%	-2.11%	-2.39%	-2.49%	-1.21%	-2.19%
Serious sexual offences (OBTJ)	Data being	developed	This is a Force measure					
Serious acquisitive crime	-2.0%	-5.3%	7.6%	-4.6%	-16.0%	-16.0%	-22.9%	-4.2%
	OCU specific targets		-0.45%	-4.35%	-4.42%	-5.84%	-7.13%	-6.61%
Serious acquisitive crime SD	>15%	14.0%	6.1%	16.7%	22.8%	26.8%	4.5%	12.5%
Class A drugs SD*	>33	24	1	0	3	1	1	15
	OCU specific targets		4.1	3.3	6.6	6.6	8.2	4.1
Organised crime group (OCG) - disruptions	>2	Data in May	Owned by Crime OCU					

Year to date performance targets matrix

This matrix is based on year to date data compared to target

	Target	Actual	Central	Isle of Wight	North & East	Portsmouth	Southampton	Western
Protecting our communities								
Domestic crimes arrest rate	>80%	72%	69%	78%	67%	78%	70%	75%
Hate crime SD	>45%	36%	24%	50%	44%	44%	48%	11%
Road traffic casualties	<904	880	Owned by Operations OCU					
Making the most of our resources								
Police officer sickness	<0.63	0.61	0.50	0.41	0.33	0.79	0.70	0.89
Police staff sickness	<0.63	0.64	0.66	0.33	0.85	0.62	0.40	0.28
Budget spend	<8.3%	Data in May	Data will be available from the May profile					
Efficiency savings	>10m	Data in May	This is a Force measure					
Equipping our staff to deliver								
Financial awareness training			Data not suitable for matrix					
Preparing for frontline supervision			Data not suitable for matrix					
Mobile data			Data not suitable for matrix					
Force Total - targets achieved	8		5	11	6	5	6	8

Notes to be read in conjunction with matrices

All citizen focus data

OBTJ

Road traffic casualties

Budget spend

Efficiency savings

SD

Sickness data

OCU specific targets

Class A drugs detections*

Based on "completely or very satisfied"

Offenders Brought To Justice - current data is to

February 2009

All data until

31 March 2009

Data is always one month in arrears

3 year target of £30m, notionally £10m per year

Sanction detections

Force Actual = total for ALL officers/police staff - including those not in OCU

OCU specific targets are rounded to 1 decimal place, the actual figure

may therefore seem the same but appear red due to this rounding

TO OCU total may not add to Force total as OCUs 7&8 contribute

Monthly performance targets matrix

This matrix is based on monthly data compared to Force targets

	Target	Actual	Central	Isle of Wight	North & East	Portsmouth	Southampton	Western
An active presence in every neighbourhood								
Rowdy & nuisance	6173	6396	1219	474	1059	1041	1539	1064
	OCU specific targets		1142	440	1191	941	1453	1006
Vehicle nuisance / inappropriate vehicle use	1230	999	254	74	203	76	203	189
	OCU specific targets		286	82	250	106	233	273
Reduce criminal damage	2814	3203	729	227	634	407	644	562
	OCU specific targets		620	206	541	381	545	520
Catching criminals & managing offenders								
All crime	13359	13223	2887	807	2437	2076	2680	2336
	OCU specific targets		2722	871	2529	2082	2802	2352
All crime (SD)	25.0%	22.2%	19.0%	25.0%	24.2%	25.4%	21.4%	21.2%
	OCU specific targets		25.0%	30.0%	25.5%	25.5%	25.0%	25.0%
Serious violent crime	75	89	12	5	11	22	25	14
	OCU specific targets		14	5	12	15	19	9
Serious violent crime SD	>50%	47.2%	41.7%	100.0%	54.5%	50.0%	24.0%	64.3%
	OCU specific targets		57.0%	60.0%	56.0%	41.0%	45.0%	50.0%
Assault with less serious injury	1134	1108	212	101	189	200	244	162
	OCU specific targets		239	80	201	164	267	183
Serious acquisitive crime	1841	1647	362	72	303	272	310	328
	OCU specific targets		336	75	361	324	402	342
Serious acquisitive crime SD	>15%	14.0%	6.1%	16.7%	22.8%	26.8%	4.5%	12.5%
Serious sexual offences (OBTJ)	Data being	developed	This is a Force measure					
Class A drugs SD	>33	24	1	0	3	1	1	15
Organised crime group (OCG) - disruptions	Data in May	Data in May	Owned by Crime OCU					
Protecting our communities								
Domestic crimes arrest rate	>80%	71.55%	68.67%	77.55%	66.92%	78.38%	69.59%	74.76%
Hate crime SD	>45%	35.58%	23.53%	50.00%	43.75%	44.44%	47.62%	10.53%
Making the most of our resources								
Police officer sickness	<0.63	0.61	0.50	0.41	0.33	0.79	0.70	0.89
Police staff sickness	<0.63	0.64	0.66	0.33	0.85	0.62	0.40	0.28
Force Total - targets achieved	6		4	9	8	6	6	7

British Crime Survey Confidence Data

SPI 2.2

This data is updated by iQuanta approximately every quarter.

Data up to and including year ending	National Public Confidence Measure	
December 2008		
Avon & Somerset	42.1%	8
Bedfordshire	47.2%	5
Essex	49.0%	2
Hampshire	47.8%	4
Hertfordshire	50.9%	1
Kent	46.4%	6
Sussex	45.8%	7
Thames Valley	48.6%	3
MSG average	47.2%	

This data is based on 'The police and local council are dealing with the anti-social behaviour and crime issues that matter in this area'

The Home Office has set a target to achieve a 12% improvement by 2012 against the baseline of 47.3%

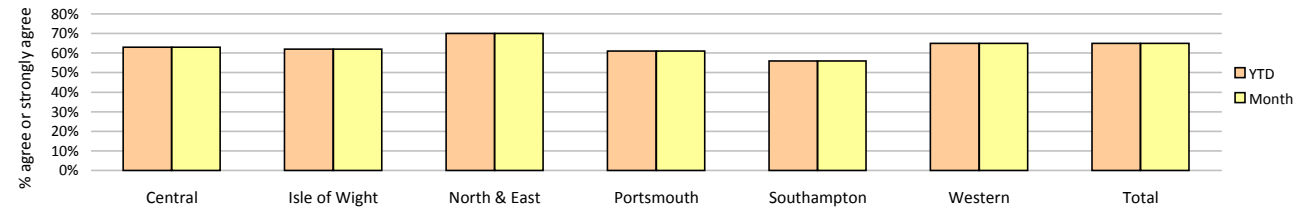
This year's required improvement is 4%

Local Confidence Survey Data

Figures relate to the percentage of respondents who agree or strongly agree with the question. Hampshire's local surveys have a confidence level of +/-4%. This means that changes of less than 4% may not reflect a real change in performance.

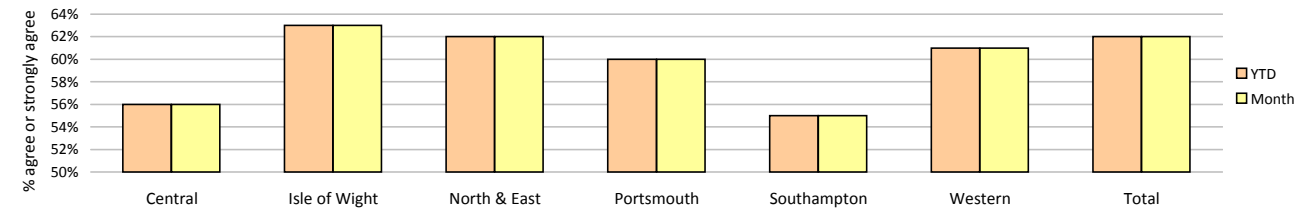
The police and local council are dealing with the anti-social behaviour and crime issues that matter in this area

	Central	Isle of Wight	North & East	Portsmouth	Southampton	Western	Total	No. Surveys
YTD Apr 09 - Apr 09	63%	62%	70%	61%	56%	65%	65%	1197
April	63%	62%	70%	61%	56%	65%	65%	1197



The police are dealing with the things that matter locally

	Central	Isle of Wight	North & East	Portsmouth	Southampton	Western	Total	No. Surveys
YTD Apr 09 - Apr 09	56%	63%	62%	60%	55%	61%	62%	1197
April	56%	63%	62%	60%	55%	61%	62%	1197



British Crime Survey - supplementary information

This data is updated by iQuanta approximately every quarter.

Data up to and including year ending	Confidence in local police		Understanding community issues	
December 2008				
Avon & Somerset	47.0%		64.4%	
Bedfordshire	52.7%		61.2%	
Essex	55.0%		66.5%	
Hampshire	57.4%	2nd in MSG	67.1%	2nd in MSG
Hertfordshire	60.5%		69.0%	
Kent	49.6%		61.3%	
Sussex	55.2%		64.1%	
Thames Valley	54.9%		64.4%	
MSG	54.0%		64.8%	

Overall satisfaction (user satisfaction survey results)

SPI 1.1 Force Target

Rolling 12 months data relates to: May 08 - Apr 09; rolling 3 months data relates to Feb 09 - Apr 09
Overall satisfaction includes burglary, vehicle crime, violent crime and RTCs

Target	Central	Isle of Wight	North & East	Portsmouth	Southampton	Western	Total	No. Surveys
Rolling 12 months	66%	70%	64%	66%	61%	65%	65%	7314
Rolling 3 months	69%	71%	67%	70%	60%	69%	68%	1804

Being kept informed (user satisfaction survey results)

Rolling 12 months data relates to: May 08 - Apr 09; rolling 3 months data relates to Feb 09 - Apr 09
Being kept informed includes burglary, vehicle crime, violent crime and RTCs

	Central	Isle of Wight	North & East	Portsmouth	Southampton	Western	Total	No. Surveys
Rolling 12 months	54%	60%	52%	52%	51%	54%	53%	7080
Rolling 3 months	61%	63%	58%	56%	51%	62%	58%	1766

Providing an excellent service

Particular emphasis surrounds compliance with the Victims' Code - keeping people updated - and it is this area that is currently reported on. Other commitments from the Pledge will be periodically reported on.

MSG information for user satisfaction

iQuanta data for MSG for the 12 months up to December 2008

Vehicle crime

Ease of contact	2/8	Hertfordshire
Actions taken	4/8	Essex
Follow up	4/8	Hertfordshire
Treatment	4/8	Hertfordshire
OVERALL	5/8	Hertfordshire

Burglary

Ease of contact	2/8	Hertfordshire
Actions taken	2/8	Hampshire
Follow up	1/8	Hampshire
Treatment	3/8	Hertfordshire
OVERALL	3/8	Hertfordshire

Violent crime

Ease of contact	1/8	Hampshire
Actions taken	5/8	Kent
Follow up	6/8	Kent
Treatment	5/8	Hertfordshire
OVERALL	5/8	Sussex

RTC

Ease of contact	1/8	Hampshire
Actions taken	2/8	Hertfordshire
Follow up	3/8	Hertfordshire
Treatment	2/8	Hertfordshire
OVERALL	2/8	Hertfordshire

All users (excluding racist incidents)

Ease of contact	2/8	Hertfordshire
Actions taken	4/8	Hertfordshire
Follow up	3/8	Hertfordshire
Treatment	3/8	Hertfordshire
OVERALL	3/8	Hertfordshire

Responding to victims of crime

Pledge Point 9

Hampshire Constabulary has always valued victim care. With the introduction of the Policing Pledge, this section will be used not only to inform how we manage our victims of crime, but our progress and actions that relate to the Pledge.

Summary results of Dip-sample Victim Code Compliance checks (latest month for available data followed by YTD)

% where victim was informed within 5 days of an investigation being closed

	Central	Isle of Wight	North & East	Portsmouth	Southampton	Western	Crime	Operations	Total
March 2009	100%	100%	100%	100%	100%	100%	Data in May	Data in May	100%
YTD	100%	98%	97%	97%	99%	98%	Data in May	Data in May	98%

% where the victim has been updated on a monthly basis (if applicable)

	Central	Isle of Wight	North & East	Portsmouth	Southampton	Western	Crime	Operations	Total
March 2009	100%	75%	77%	95%	100%	93%	Data in May	Data in May	90%
YTD	98%	66%	80%	94%	100%	95%	Data in May	Data in May	89%

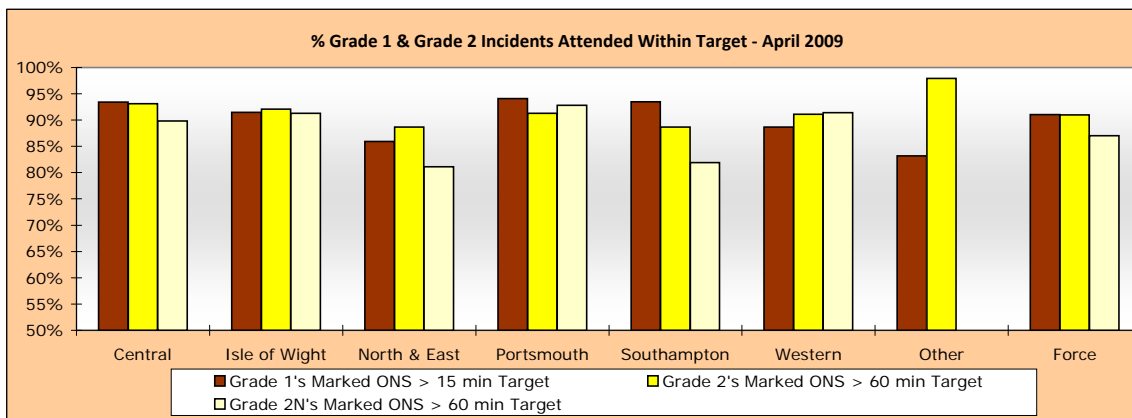
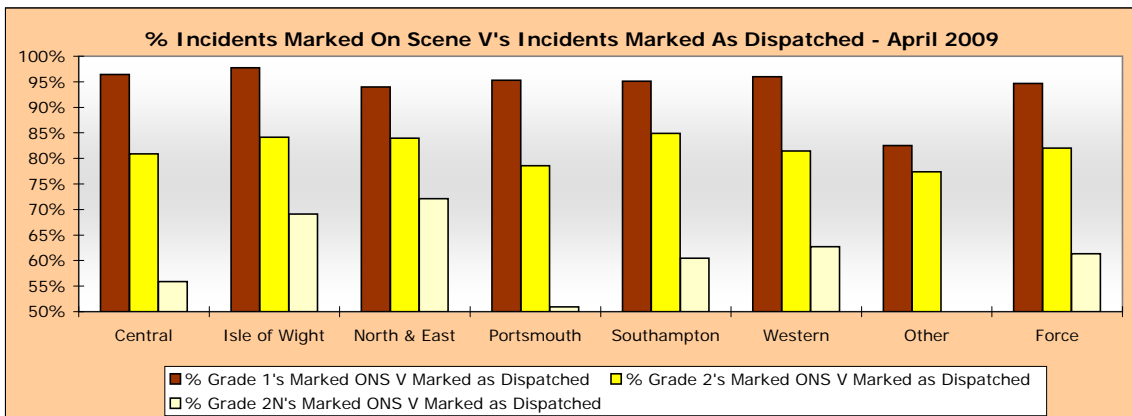
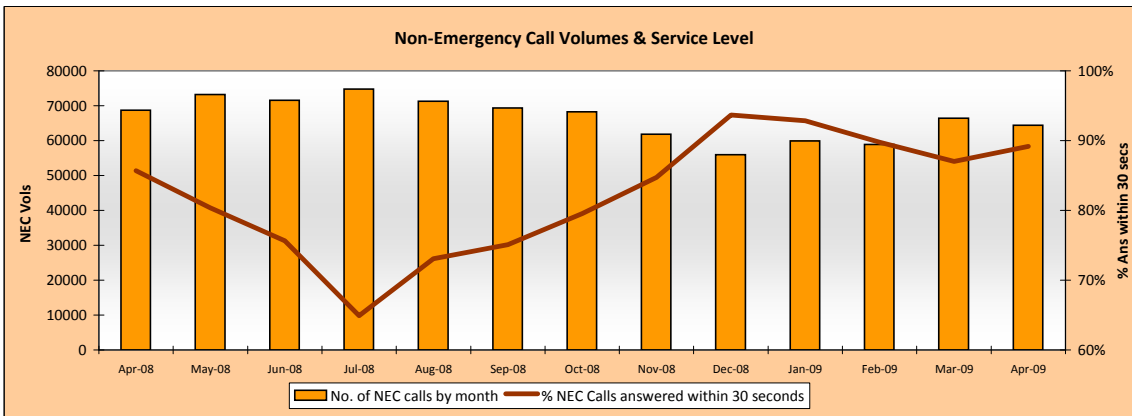
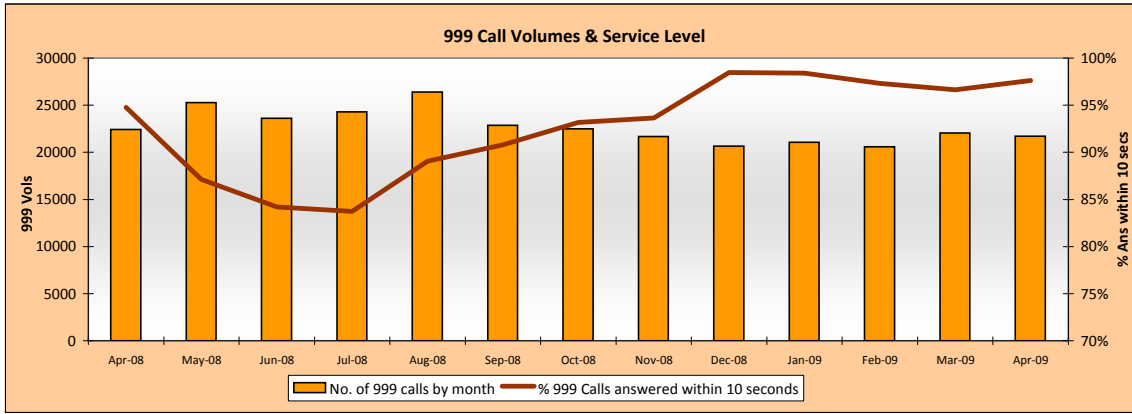
% where the victim was notified upon filing (if applicable)

	Central	Isle of Wight	North & East	Portsmouth	Southampton	Western	Crime	Operations	Total
March 2009	100%	90%	80%	95%	100%	90%	Data in May	Data in May	93%
YTD	100%	93%	86%	98%	100%	95%	Data in May	Data in May	95%

Victim support status for crimes

Month of April 2009	Central	Isle of Wight	North & East	Portsmouth	Southampton	Western	Total	Total %
Victim informed of VSS accepted	287	76	243	191	378	217	1392	10.53%
Victim informed of VSS declined	1854	508	1495	1161	1610	1358	7986	60.39%
VSS aware	86	17	33	19	29	97	281	2.13%
Victimless crime	660	193	545	610	608	564	3180	24.05%
Not stated	0	13	121	95	55	100	384	2.90%
Total crimes	2887	807	2437	2076	2680	2336	13223	N/A
% referred	12.92%	11.52%	11.33%	10.12%	15.19%	13.44%	12.65%	N/A

YTD to April 2009	Central	Isle of Wight	North & East	Portsmouth	Southampton	Western	Total	Total %
Victim informed of VSS accepted	287	76	243	191	378	217	1392	10.53%
Victim informed of VSS declined	1854	508	1495	1161	1610	1358	7986	60.39%
VSS aware	86	17	33	19	29	97	281	2.13%
Victimless crime	660	193	545	610	608	564	3180	24.05%
Not stated	0	13	121	95	55	100	384	2.90%
Total crimes	2887	807	2437	2076	2680	2336	13223	N/A
% referred	12.92%	11.52%	11.33%	10.12%	15.19%	13.44%	12.65%	N/A



Providing an excellent service

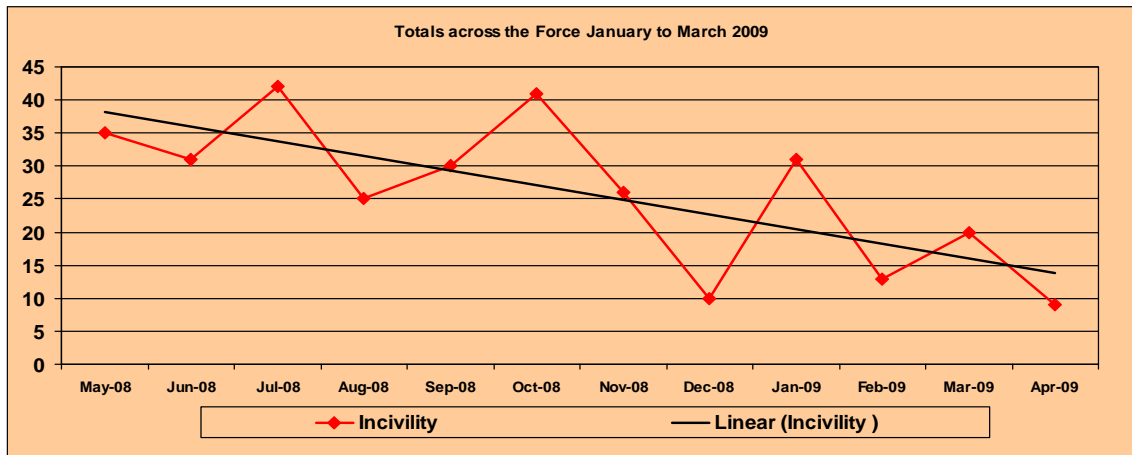
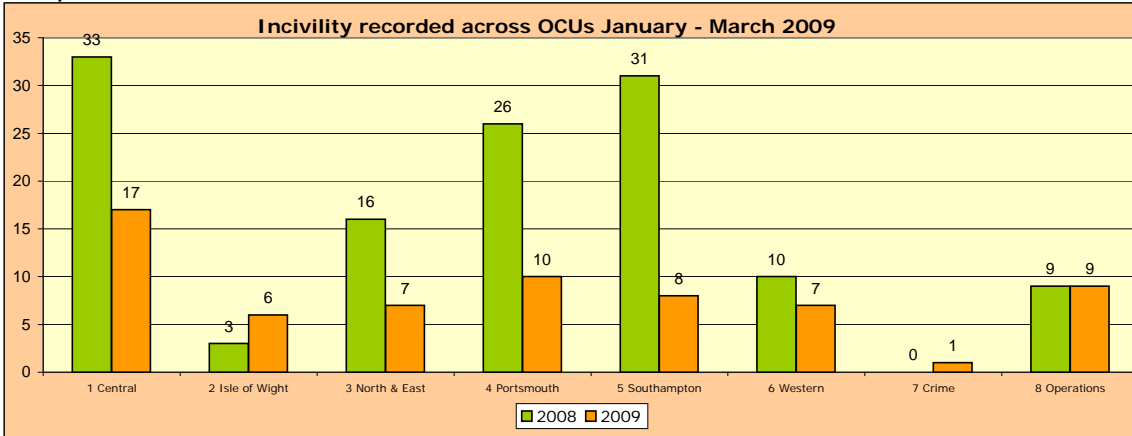
Appreciations and dissatisfactions

Policing Pledge

Letters of appreciation

Jan-Mar 2009	Central	IOW	North & East	Portsmouth	Southampton	Western	Firearms Lic	RPU	CC	Total
January	11	7	10	1	0	5	2	5	13	54
February	3	6	12	3	0	11	2	0	15	52
March	10	7	22	0	4	12	3	4	21	83
Total	24	20	44	4	4	28	7	9	49	189

Reports of incivility



This graph shows the downward trend for the volume of incivility allegations. The "Linear (incivility)" shows the trajectory of this downward trend

Allegations and their resolutions

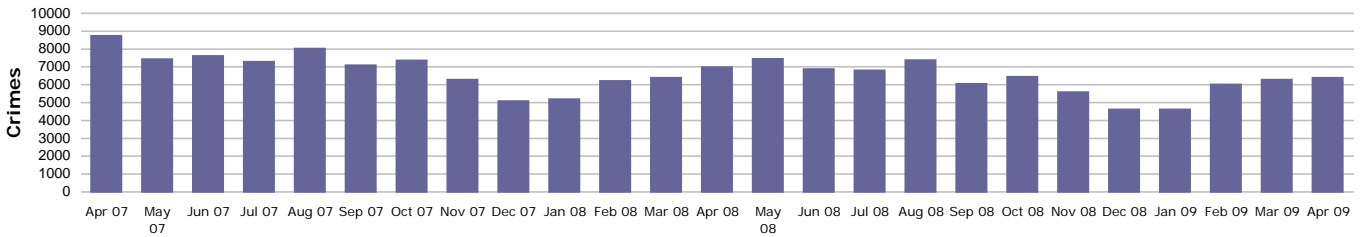
April 2009	
Locally resolved by OCU	20
Locally resolved by PSD	8
Dispensed by IPCC	9
Unsubstantiated	28
Substantiated	2
Total	67

An active presence in every neighbourhood

Rowdy & Nuisance Behaviour

Force Target

This year the decision has been made to use RMS as the source of this data, as opposed to the NSIR return data (the figures published in 08/09 Force Performance Summary used the NSIR data).



Incidents	Central	Isle of Wight	North & East	Portsmouth	Southampton	Western	Total
YTD Incidents	1219	474	1059	1041	1539	1064	6396
YTD Target	1142	440	1191	941	1453	1006	6173
YTD 08/09 Incidents	1276	521	1428	1009	1569	1193	6996
This month	1219	474	1059	1041	1539	1064	6396
% change from 08/09	-4.47%	-9.02%	-25.84%	3.17%	-1.91%	-10.81%	-8.58%

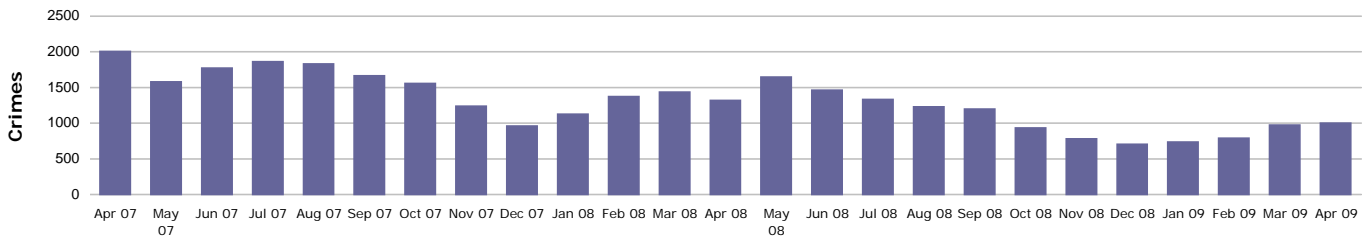
Rowdy & nuisance behaviour relates to occurrence types: Inappropriate use of Fireworks, Rowdy & Inconsiderate, Substance Misuse and Street Drinking



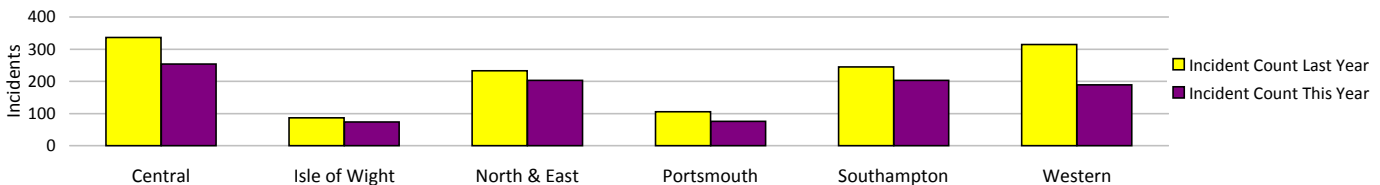
Vehicle nuisance/Inappropriate vehicle use

Force Target

This year the decision has been made to use RMS as the source of this data, as opposed to the NSIR return data (the figures published in 08/09 Force Performance Summary used the NSIR data).



Incidents	Central	Isle of Wight	North & East	Portsmouth	Southampton	Western	Total
YTD Incidents	254	74	203	76	203	189	999
YTD Target	286	82	250	106	233	273	1230
YTD 08/09 Incidents	336	87	233	105	245	314	1320
This month	254	74	203	76	203	189	999
% change from 08/09	-24.40%	-14.94%	-12.88%	-27.62%	-17.14%	-39.81%	-24.32%



Neighbourhood Policing Teams

Policing pledge 3

Abstractions	Central	Isle of Wight	North & East	Portsmouth	Southampton	Western	Total
April 2009	3.02%	2.32%	3.16%	3.80%	1.63%	3.30%	Data awaited

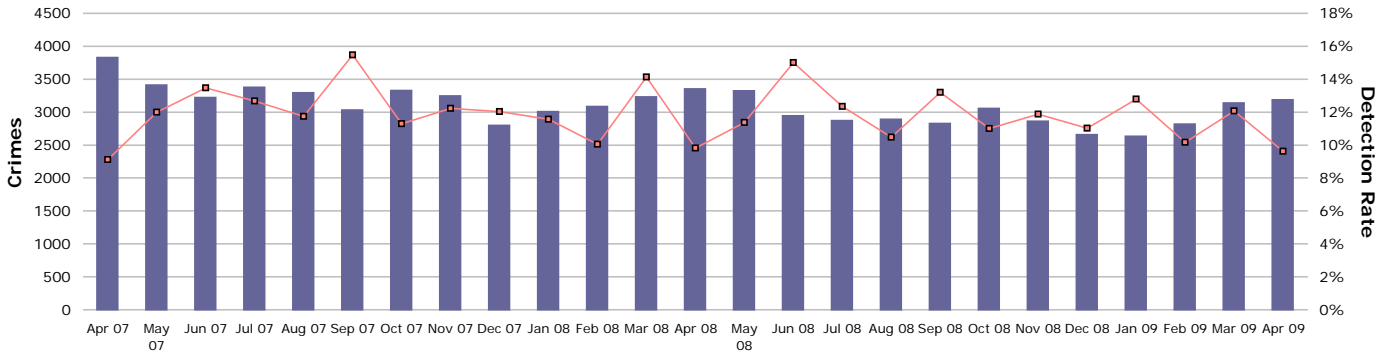
Target = NPT visible & accessible at least 80% of time (maximum 20% abstractions)

Community liaison data is being developed and will be available in June 2009

An active presence in every neighbourhood

Criminal damage

Force Target

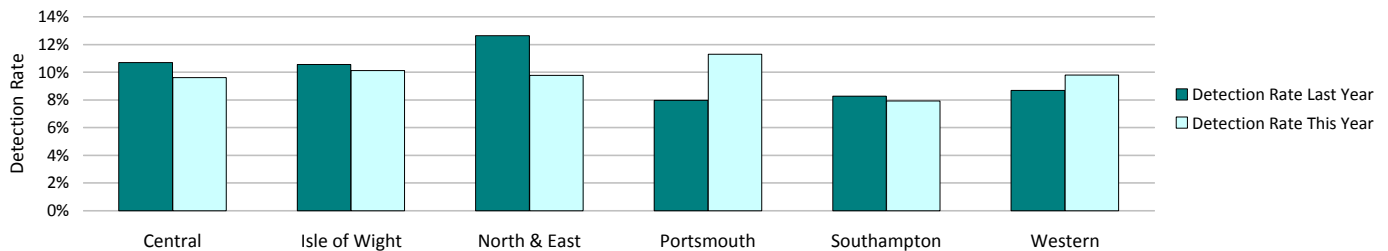


Crimes	Central	Isle of Wight	North & East	Portsmouth	Southampton	Western	Total
YTD Crimes	729	227	634	407	644	562	3203
YTD Target	620	206	541	381	545	520	2814
YTD 08/09 Crimes	701	275	617	427	653	680	3353
This month	729	227	634	407	644	562	3203
% change from 08/09	3.99%	-17.45%	2.76%	-4.68%	-1.38%	-17.35%	-4.47%
MSG position	13 of 15	8 of 15	13 of 15	7 of 9	15 of 15	8 of 15	8 of 8
OCU actual	This data will be included from May Profile onwards						
MSG average	This data will be included from May Profile onwards						



Detections	Central	Isle of Wight	North & East	Portsmouth	Southampton	Western	Total
YTD Detection Rate	9.60%	10.13%	9.78%	11.30%	7.92%	9.79%	9.58%
This month	9.60%	10.13%	9.78%	11.30%	7.92%	9.79%	9.58%
YTD 08/09 Detections	10.70%	10.55%	12.64%	7.96%	8.27%	8.68%	9.81%
MSG position	9 of 15	10 of 15	12 of 15	8 of 9	14 of 15	10 of 15	8 of 8
OCU actual	This data will be included from May Profile onwards						
MSG average	This data will be included from May Profile onwards						

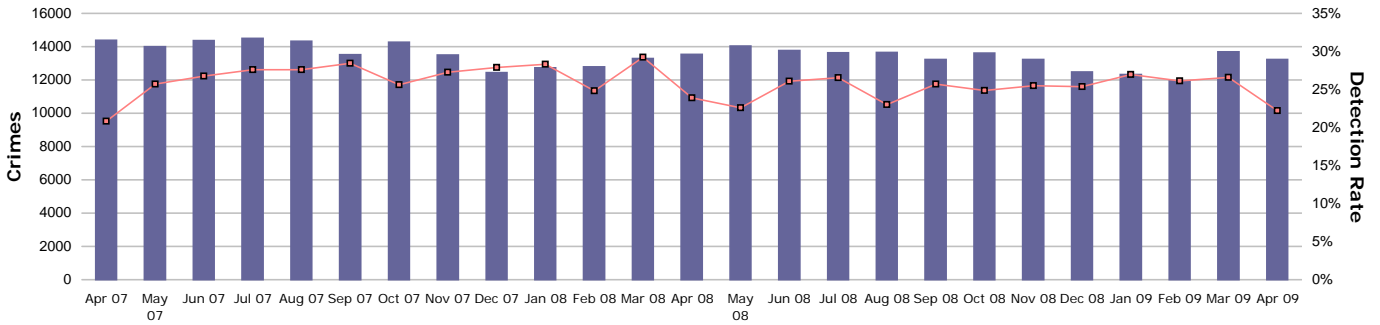
Note: Detections refer to Sanction Detections ONLY



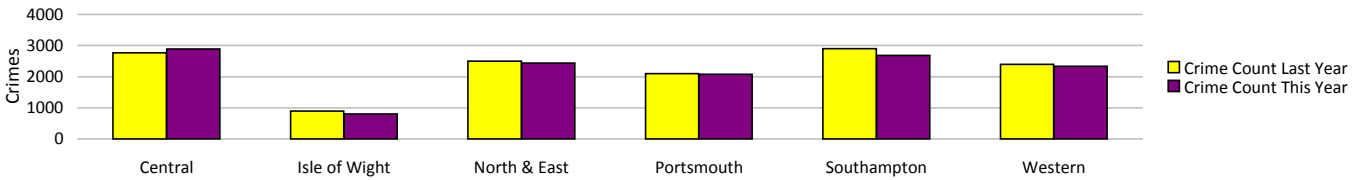
Catching criminals and managing offenders

All crime

Force Target



Crimes	Central	Isle of Wight	North & East	Portsmouth	Southampton	Western	Total
YTD Crimes	2887	807	2437	2076	2680	2336	13223
YTD Target	2722	871	2529	2082	2802	2352	13359
YTD 08/09 Crimes	2762	893	2496	2093	2901	2397	13542
This month	2887	807	2437	2076	2680	2336	13223
% change from 08/09	4.53%	-9.63%	-2.36%	-0.81%	-7.62%	-2.54%	-2.36%
MSG position	13 of 15	5 of 15	11 of 15	7 of 9	14 of 15	7 of 15	7 of 8
OCU actual	This data will be included from May Profile onwards						
MSG average	This data will be included from May Profile onwards						



Detections	Central	Isle of Wight	North & East	Portsmouth	Southampton	Western	Total
YTD Detection Rate	19.02%	25.03%	24.17%	25.43%	21.38%	21.19%	22.20%
This month	19.02%	25.03%	24.17%	25.43%	21.38%	21.19%	22.20%
YTD 08/09 Detections	23.57%	30.24%	26.36%	23.89%	22.54%	20.86%	23.87%
Detection Targets	25.00%	30.00%	25.50%	25.50%	25.00%	25.00%	25.00%
MSG position	12 of 15	5 of 15	11 of 15	5 of 9	11 of 15	14 of 15	7 of 8
OCU actual	This data will be included from May Profile onwards						
MSG average	This data will be included from May Profile onwards						

Note: Detections refer to Sanction Detections ONLY



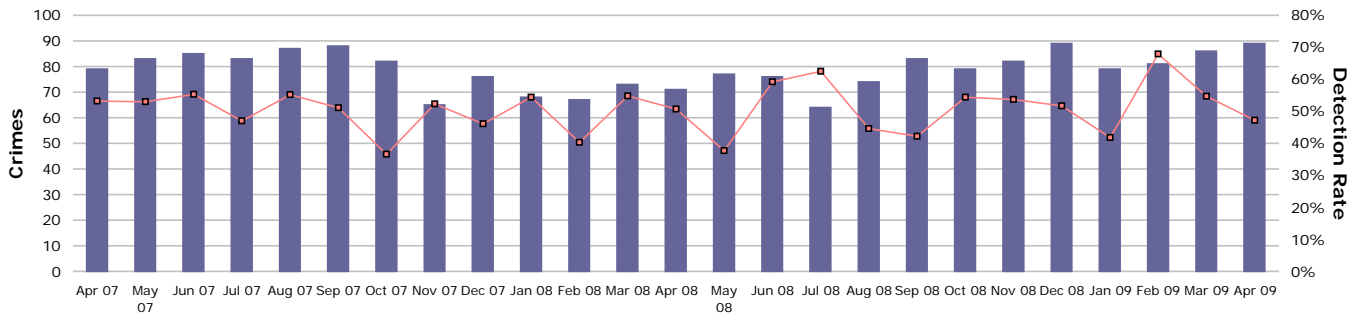
Catching criminals and managing offenders

Serious violent crime

SPI 5.1

Force Target

Serious violent crime consists of crimsec codes 1, 2, 4.1-4.4, 4.6, 4.8, 5A, 5B, 5C, 8F, 8H and 37.1



Crimes	Central	Isle of Wight	North & East	Portsmouth	Southampton	Western	Total
YTD Crimes	12	5	11	22	25	14	89
YTD Target	14	5	12	15	19	9	75
YTD 08/09 Crimes	22	5	11	10	14	9	71
This month	12	5	11	22	25	14	89
% change from 08/09	-45.45%	0.00%	0.00%	120.00%	78.57%	55.56%	25.35%
MSG position	2 of 15	7 of 15	15 of 15	8 of 9	12 of 15	12 of 15	7 of 8
OCU actual	This data will be included from May Profile onwards						
MSG average	This data will be included from May Profile onwards						



Detections

	Central	Isle of Wight	North & East	Portsmouth	Southampton	Western	Total
YTD Detection Rate	41.67%	100.00%	54.55%	50.00%	24.00%	64.29%	47.19%
This month	41.67%	100.00%	54.55%	50.00%	24.00%	64.29%	47.19%
YTD 08/09 Detections	27.27%	140.00%	9.09%	80.00%	64.29%	55.56%	50.70%
Detection Targets	57.00%	60.00%	56.00%	41.00%	45.00%	50.00%	50.00%
MSG position	4 of 15	1 of 15	6 of 15	4 of 9	2 of 15	9 of 15	1 of 8
OCU actual	This data will be included from May Profile onwards						
MSG average	This data will be included from May Profile onwards						

Note: Detections refer to Sanction Detections ONLY



SPI 6.1

Serious Violent offences OBTJ

RA = Rolling Annual

	Recorded Crime		Total OBTJs		Hampshire		Rolling Average	
	Month	RA	Month	RA	Month	RA	MSG	E&W
Attempted Murder.		12		4	0.0%	33.3%	19.0%	22.8%
Death by Aggravated Vehicle Taking.					0.0%	0.0%	200.0%	83.3%
Causing Death by Dangerous Driving etc		12	2	12	0.0%	100.0%	94.3%	85.0%
Homicide and Child Destruction.	1	13	2	21	200.0%	161.5%	167.1%	112.2%
Wounding & GBH without intent.	75	755	14	205	18.7%	27.2%	28.1%	22.6%

Serious Violent offences OBTJ Breakdown

	Convictions	Caution	TICs	Cannabis Warning	PNDs
Rolling 12 month Average					
Attempted Murder.	4				
Death by Aggravated Vehicle Taking.					
Causing Death by Dangerous Driving etc	12				
Homicide and Child Destruction.	21				
Wounding & GBH without intent.	200	5			

Note: MSG data is a month in arrears. MSG positions in this profile relate to the position the Force/OCU were a month ago

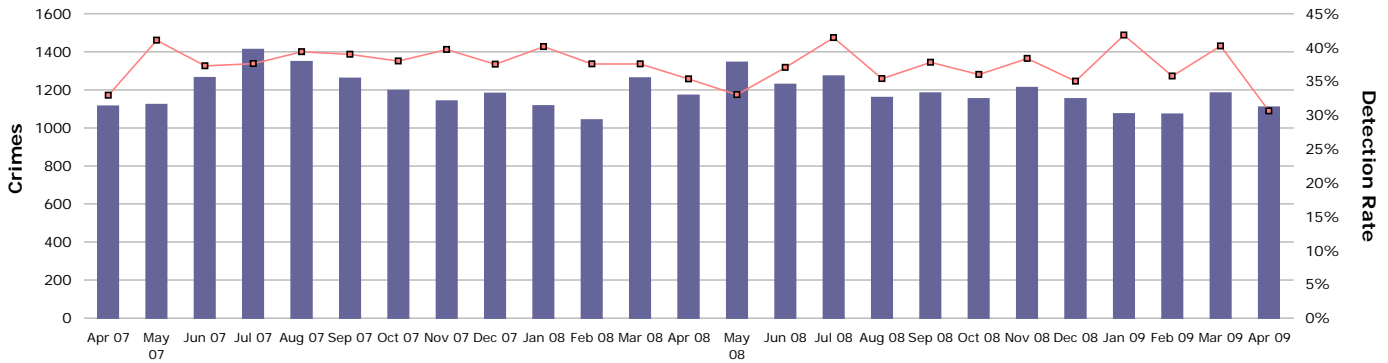
Catching criminals and managing offenders

Assault with less serious injury

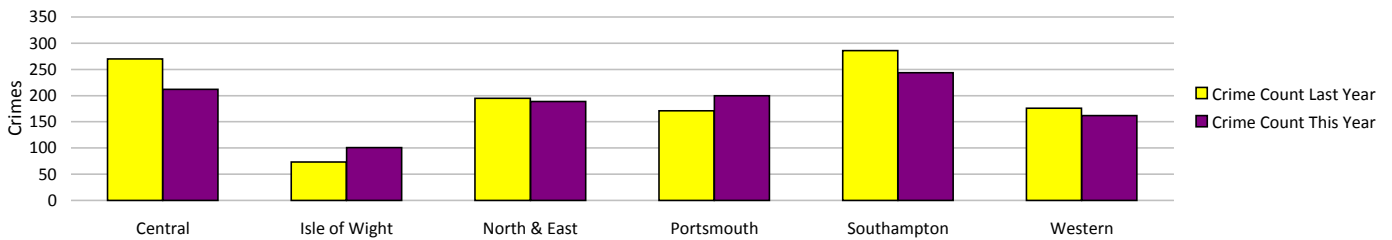
SPI 5.3

Force Target

Assault with less serious injury consists of crimsec codes 8G and 8J

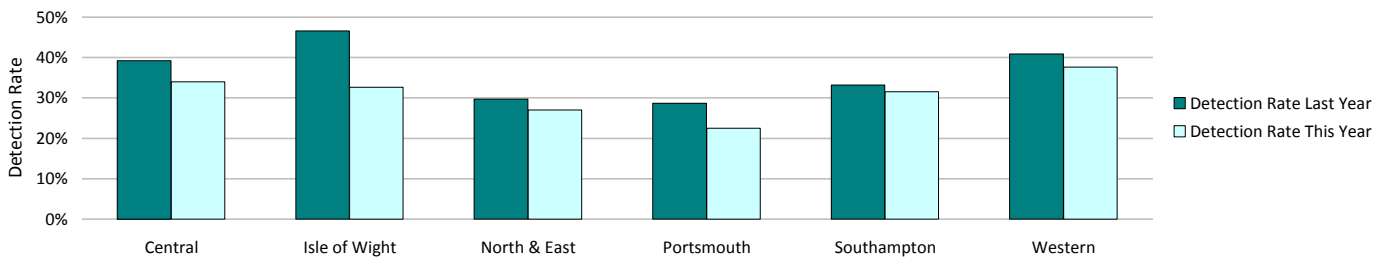


Crimes	Central	Isle of Wight	North & East	Portsmouth	Southampton	Western	Total
YTD Crimes	212	101	189	200	244	162	1108
YTD Target	239	80	201	164	267	183	1134
YTD 08/09 Crimes	270	73	195	171	286	176	1171
This month	212	101	189	200	244	162	1108
% change from 08/09	-21.48%	38.36%	-3.08%	16.96%	-14.69%	-7.95%	-5.38%
MSG position	14 of 15	9 of 15	11 of 15	7 of 9	15 of 15	6 of 15	8 of 8
OCU actual	This data will be included from May Profile onwards						
MSG average	This data will be included from May Profile onwards						



Detections	Central	Isle of Wight	North & East	Portsmouth	Southampton	Western	Total
YTD Detection Rate	33.96%	32.67%	26.98%	22.50%	31.56%	37.65%	30.60%
This month	33.96%	32.67%	26.98%	22.50%	31.56%	37.65%	30.60%
YTD 08/09 Detections	39.26%	46.58%	29.74%	28.65%	33.22%	40.91%	35.35%
MSG position	15 of 15	10 of 15	12 of 15	7 of 9	7 of 15	5 of 15	7 of 8
OCU actual	This data will be included from May Profile onwards						
MSG average	This data will be included from May Profile onwards						

Note: Detections refer to Sanction Detections ONLY



Note: MSG data is a month in arrears. MSG positions in this profile relate to the position the Force/OCU were a month ago

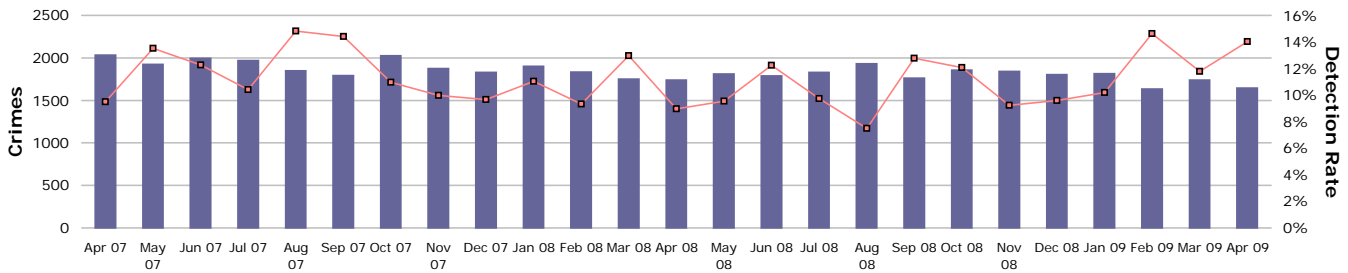
Catching criminals and managing offenders

Serious acquisitive crime

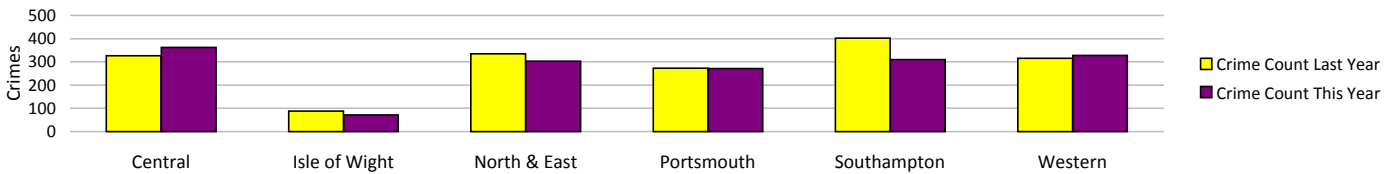
SPI 5.2

Force Target

Serious acquisitive crime consists of crimsec codes 28, 29, 34A, 34B, 37/2, 45 and 48

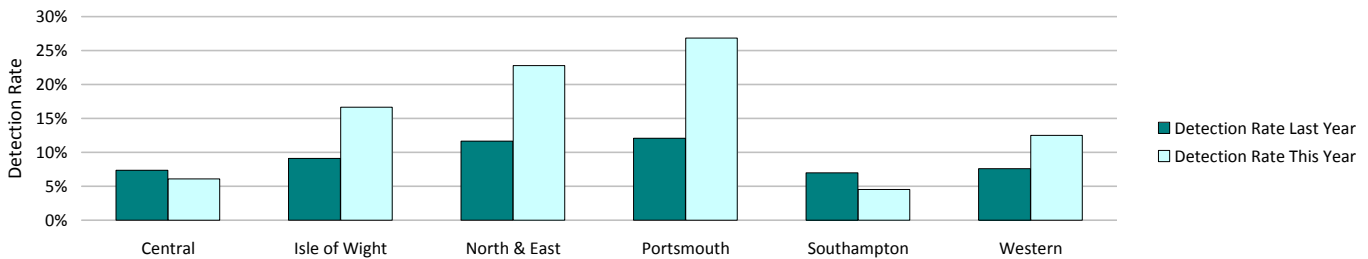


Crimes	Central	Isle of Wight	North & East	Portsmouth	Southampton	Western	Total
YTD Crimes	362	72	303	272	310	328	1647
YTD Target	336	75	361	324	402	342	1841
YTD 08/09 Crimes	326	88	335	273	402	316	1740
This month	362	72	303	272	310	328	1647
% change from 08/09	11.04%	-18.18%	-9.55%	-0.37%	-22.89%	3.80%	-5.34%
MSG position	5 of 15	2 of 15	7 of 15	7 of 9	3 of 15	4 of 15	2 of 8
OCU actual	This data will be included from May Profile onwards						
MSG average	This data will be included from May Profile onwards						



Detections	Central	Isle of Wight	North & East	Portsmouth	Southampton	Western	Total
Target >15%							
YTD Detection Rate	6.08%	16.67%	22.77%	26.84%	4.52%	12.50%	14.03%
This month	6.08%	16.67%	22.77%	26.84%	4.52%	12.50%	14.03%
YTD 08/09 Detections	7.36%	9.09%	11.64%	12.09%	6.97%	7.59%	8.97%
MSG position	10 of 15	8 of 15	6 of 15	3 of 9	11 of 15	12 of 15	7 of 8
OCU actual	This data will be included from May Profile onwards						
MSG average	This data will be included from May Profile onwards						

Note: Detections refer to Sanction Detections ONLY



SPI 6.2

Serious Acq offences OBTJ

RA = Rolling Annual

	Recorded Crime		Total OBTJs		Hampshire		Rolling Average	
	Month	RA	Month	RA	Month	RA	MSG	E&W
Aggravated burglary in a dwelling	5	62	5	14	100.0%	22.6%	23.7%	20.9%
Aggravated Vehicle Taking	26	255	16	211	61.5%	82.8%	76.8%	70.3%
Burglary in a dwelling	517	5,887	67	845	13.0%	14.4%	14.2%	15.1%
Robbery	90	1,102	49	234	54.4%	21.2%	19.7%	17.7%
Theft from a Vehicle	929	11,383	18	322	1.9%	2.8%	7.3%	8.5%
Theft of a Motor Vehicle	206	3,124	30	393	14.6%	12.6%	12.0%	12.5%

Serious Acq offences OBTJ Breakdown

	Convictions	Caution	TICs	Cannabis Warnings	PNDs
Rolling 12 month Average					
Aggravated burglary in a dwelling	13		1		
Aggravated Vehicle Taking	189	21	1		
Burglary in a dwelling	466	36	343		
Robbery	228	3	3		
Theft from a Vehicle	178	52	92		
Theft of a Motor Vehicle	328	41	24		

Note: MSG data is a month in arrears. MSG positions in this profile relate to the position the Force/OCU were a month ago

Catching criminals and managing offenders

Serious acquisitive crime breakdown

Robbery

Year to date	Central	Isle of Wight	North & East	Portsmouth	Southampton	Western	Total
Crimes	9	1	10	29	29	13	91
08/09 crimes	12	1	11	18	33	14	89
% change from 08/09	-25.00%	0.00%	-9.09%	61.11%	-12.12%	-7.14%	2.25%

Detection rate	33.33%	200.00%	80.00%	13.79%	17.24%	15.38%	26.37%
----------------	--------	---------	--------	--------	--------	--------	---------------

April 2009	Central	Isle of Wight	North & East	Portsmouth	Southampton	Western	Total
Crimes	9	1	10	29	29	13	91
Detection rate	33.33%	200.00%	80.00%	13.79%	17.24%	15.38%	26.37%

Dwelling burglary

Year to date	Central	Isle of Wight	North & East	Portsmouth	Southampton	Western	Total
Crimes	91	21	92	58	75	75	412
08/09 crimes	71	20	87	79	88	76	421
% change from 08/09	28.17%	5.00%	5.75%	-26.58%	-14.77%	-1.32%	-2.14%

Detection rate	9.89%	9.52%	15.22%	93.10%	5.33%	36.00%	26.70%
----------------	-------	-------	--------	--------	-------	--------	---------------

April 2009	Central	Isle of Wight	North & East	Portsmouth	Southampton	Western	Total
Crimes	91	21	92	58	75	75	412
Detection rate	9.89%	9.52%	15.22%	93.10%	5.33%	36.00%	26.70%

Vehicle crime

Year to date	Central	Isle of Wight	North & East	Portsmouth	Southampton	Western	Total
Crimes	262	50	201	185	206	240	1144
08/09 crimes	243	67	237	176	281	226	1230
% change from 08/09	7.82%	-25.37%	-15.19%	5.11%	-26.69%	6.19%	-6.99%

Detection rate	3.82%	16.00%	23.38%	8.11%	2.43%	5.00%	8.48%
----------------	-------	--------	--------	-------	-------	-------	--------------

April 2009	Central	Isle of Wight	North & East	Portsmouth	Southampton	Western	Total
Crimes	262	50	201	185	206	240	1144
Detection rate	3.82%	16.00%	23.38%	8.11%	2.43%	5.00%	8.48%

Theft of a motor vehicle

Year to date	Central	Isle of Wight	North & East	Portsmouth	Southampton	Western	Total
Crimes	62	16	68	31	52	37	266
Detection rate	8.06%	18.75%	8.82%	32.26%	1.92%	24.32%	12.78%

April 2009	Central	Isle of Wight	North & East	Portsmouth	Southampton	Western	Total
Crimes	62	16	68	31	52	37	266
Detection rate	8.06%	18.75%	8.82%	32.26%	1.92%	24.32%	12.78%

Theft from a motor vehicle

Year to date	Central	Isle of Wight	North & East	Portsmouth	Southampton	Western	Total
Crimes	200	34	133	154	154	203	878
Detection rate	2.50%	14.71%	30.83%	3.25%	2.60%	1.48%	7.18%

April 2009	Central	Isle of Wight	North & East	Portsmouth	Southampton	Western	Total
Crimes	200	34	133	154	154	203	878
Detection rate	2.50%	14.71%	30.83%	3.25%	2.60%	1.48%	7.18%

Robbery, burglary and vehicle crime are the component parts of serious acquisitive crime. These individual crime types do not have targets.

Catching criminals and managing offenders

Gun crime rate

SPI 5.5

	Central	Isle of Wight	North & East	Portsmouth	Southampton	Western	Total
YTD April 2009	5	0	1	3	1	1	11
YTD April 2008	0	0	4	2	1	1	8
% change from 08/09	0.0%	0.0%	-75.0%	50.0%	0.0%	0.0%	37.5%

Gun crime figures published reflect the APACS technical definition which includes "where the victim is convinced of the presence of a firearm, even if it is concealed and there is evidence of the suspect's intention to create this impression". It should be noted that the definition of gun crime changed in April 2008, therefore this data should not be compared to data published prior to this date.

Knife crime rate

SPI 5.6

	Central	Isle of Wight	North & East	Portsmouth	Southampton	Western	Total
YTD April 2009	7	2	8	9	15	5	46
YTD April 2008	No monthly data available until July 2008						No data
% change from 08/09	No % change data available until July 2009						No data

Knife = knife or other sharp instrument (including broken glass/bottles) piercing the skin or, for threats and attempts, instruments normally capable of piercing the skin

Knife crime figures published reflect the APACS technical definition which includes "where the victim is convinced of the presence of a knife, even if it is concealed and there is evidence of the suspect's intention to create this impression". It should be noted that the definition of knife crime changed in April 2008, therefore this data should not be compared to data published prior to this date.

Serious sexual crime OBJ rate

SPI 6.4

The table below shows % of persons brought to justice for serious sexual crimes against the total number of serious sexual crimes

OBJ Crime category	Sep-08	Oct-08	Nov-08	Dec-08	Jan-09	Feb-09	Rolling average
Tier 1: Serious Sexual Offences	28%	20%	26%	30%	Data unavailable	16%	29%

Murder offences

	Central	Isle of Wight	North & East	Portsmouth	Southampton	Western	Total
YTD April 2009	0	0	0	0	0	0	0
YTD Domestic Murders 2009	0	0	0	0	0	0	0
YTD April 2008	0	0	0	0	0	0	0
YTD Domestic Murders 2008	0	0	0	0	0	0	0
% change from 07/08							0.0%

SPI 5.4

FIU1 submissions

	Central	Isle of Wight	North & East	Portsmouth	Southampton	Western	Total
April 2009	22	21	13	15	13	18	102
Number of eligible crimes	269	83	301	304	264	241	1462
% submission rate	8%	25%	4%	5%	5%	7%	7%

	Central	Isle of Wight	North & East	Portsmouth	Southampton	Western	Total
YTD April 2009	22	21	13	15	13	18	102
Number of eligible crimes	269	83	301	304	264	241	1462
% submission rate	8%	25%	4%	5%	5%	7%	7%

Eligible crimes are those covered by Proceeds of Crime Act (POCA)

Prolific and other Priority Offenders (PPOs) convictions

Number of convictions recorded against identified, prolific and other priority offenders

Convictions	Sep 2008	Oct 2008	Nov 2008	Dec 2008	Jan 2009	Feb 2009	Mar 2009
Persistent Young Offenders	74	86	71	89	94	83	80
Priority Prolific Offenders	20	35	13	28	27	40	25
Persistent Priority Prolific Young Offenders	2	1	2	5	3	2	2
Young Offenders	192	155	162	183	230	162	191

Class A drugs sanction detections

Force Target

	Central	Isle of Wight	North & East	Portsmouth	Southampton	Western	Crime	Operations	No OCU	Total
YTD April 2009	1	0	3	1	1	15	1	0	2	24
YTD Target	4.11	3.29	6.58	6.58	8.22	4.11	No target	No target	No target	32.88
YTD April 2008	0	4	3	0	0	2	27	0	0	36

Drug Seizures information

	Central	Isle of Wight	North & East	Portsmouth	Southampton	Western	Crime	Total
YTD April 2009	Data available in June							
YTD April 2008	Data available in June							
% change from 08/09	Data available in June							

Note: This data will be produced one month in arrears and the % change from 08/09 is based on an average from the relevant quarter

Number of Organised Crime Groups (OCGs) disrupted

Force Target

Year to Date	Total
Number of OCGs disrupted YTD 2009/2010	Data in May
Number of OCGs disrupted YTD 2008/2009	27

Protecting our communities

Domestic violence and abuse is defined by ACPO as: 'any incidence of threatening behaviour, violence or abuse (psychological, physical, sexual, financial or emotional) between adults, aged 18 and over, who are or have been intimate partners or family members, regardless of gender or sexuality'

Domestic violence and abuse crime arrest rate

Force Target

Domestic violence arrest rate is based on records where the occurrence has been flagged as a domestic, and has an arrest event or a linked person reason of arrested.

Target >80%

Year to Date	Central	Isle of Wight	North & East	Portsmouth	Southampton	Western	Total
Domestic Crimes	150	49	133	111	171	103	717
Domestic Crime Arrests	103	38	89	87	119	77	513
Domestic Crime Arrest Rate	68.67%	77.55%	66.92%	78.38%	69.59%	74.76%	71.55%

Month	Central	Isle of Wight	North & East	Portsmouth	Southampton	Western	Total
Domestic Crimes	150	49	133	111	171	103	717
Domestic Crime Arrests	103	38	89	87	119	77	513
Domestic Crime Arrest Rate	68.67%	77.55%	66.92%	78.38%	69.59%	74.76%	71.55%

Police No Further Action (NFA) Rate

Year to Date	Central	Isle of Wight	North & East	Portsmouth	Southampton	Western	Total
Domestic Crimes	Data available in July						
Domestic Crime NFA'd	Data available in July						
Domestic Crime NFA Rate	Data available in July						

Month	Central	Isle of Wight	North & East	Portsmouth	Southampton	Western	Total
Domestic Crimes	Data available in July						
Domestic Crime NFA'd	Data available in July						
Domestic Crime NFA Rate	Data available in July						

Repeat incidents of domestic violence cases reviewed at MARAC

SPI 14.1

A Multi Agency Risk Assessment Conference (MARAC) meet to manage the highest risk domestic abuse cases. A 'case' = a victim & perpetrator(s) being reviewed at the same MARAC. Once a case has been to MARAC, it remains flagged as a MARAC case for 12 mths after the most recent MARAC review. A repeat case is when a case reviewed at MARAC has also been reviewed at the same MARAC within the preceding 12 mths. For further information on this measure please refer to Home Office Guidance on Performance Indicators for Policing & Community Safety 09/10.

Year to Date	Central	Isle of Wight	North & East	Portsmouth	Southampton	Western	Total
Number of cases reviewed at MARAC	Data available in June						
Repeat cases reviewed at MARAC	Data available in June						
% Repeat cases	Data available in June						

Hate crime detection rate

Force Target

Target >45%

Year to Date	Central	Isle of Wight	North & East	Portsmouth	Southampton	Western	Total
Incidents	25	4	21	27	30	21	128
Crimes	17	4	16	27	21	19	104
Detections	4	2	7	12	10	2	37
Detection Rate	23.53%	50.00%	43.75%	44.44%	47.62%	10.53%	35.58%

Month	Central	Isle of Wight	North & East	Portsmouth	Southampton	Western	Total
Incidents	25	4	21	27	30	21	128
Crimes	17	4	16	27	21	19	104
Detections	4	2	7	12	10	2	37
Detection Rate	23.53%	50.00%	43.75%	44.44%	47.62%	10.53%	35.58%

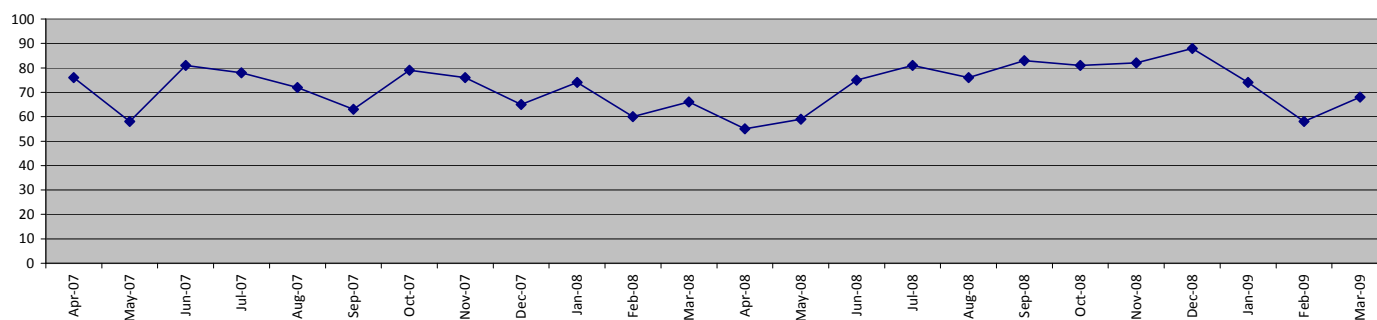
Protecting our communities

Road traffic casualties

SPI 9.1

Force Target

Fatal/serious injury casualties - all victims

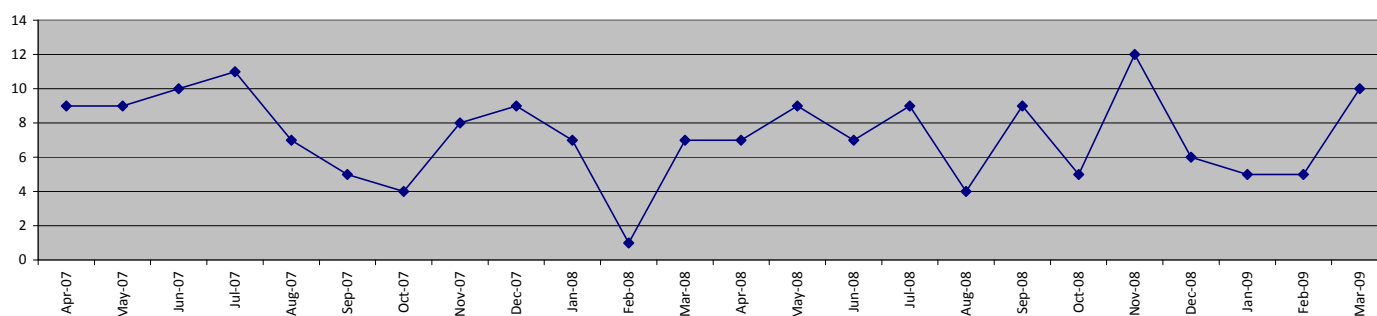


The Force target 2008/2009 is for less than 938 casualties, which equates to less than 938 in 365 days

YTD Mar 2009 = 880 casualties

	Central	Isle of Wight	North&East	Portsmouth	Southampton	Western	Total
1 April 2008 - 31 March 2009	179	89	193	108	86	225	880
of these, fatalities were	15	9	13	7	5	21	70
1 April 2007 - 31 March 2008	213	78	193	73	76	215	848

Fatal/serious injury casualties - victims under 16 years



The DETR target is for a 50% reduction in child casualties by 2010 from 164 to 82 (Target 2008/2009 = 94)

	Central	Isle of Wight	North&East	Portsmouth	Southampton	Western	Total
1 April 2008 - 31 March 2009	17	11	20	11	13	16	88
of these, fatalities were	0	0	0	0	0	2	2
1 April 2007 - 31 March 2008	18	7	18	19	8	17	87

Note: YTD numbers may change as the accident record data are updated each month

Note: The casualties in East Hampshire have all been attributed to North & East OCU in the absence of a breakdown by OCU

Comparative satisfaction of minority ethnic groups

Data relates to interviews which took place Apr 08 - Mar 09

These figures are for overall satisfaction for burglary, vehicle crime, violent crime & RTCs; it excludes racist incidents

	Completely and very satisfied	Completely, very and fairly satisfied
White	65.5%	84.2%
Minority Ethnic	56.3%	79.8%

Satisfaction of victims of racist incidents

These figures relate to interviews which took place May 08 - Apr 09; these will be updated quarterly

Racist incident overall satisfaction = % completely or very satisfied

	Central	Isle of Wight	North & East	Portsmouth	Southampton	Western	Total
%	70%	50%	56%	55%	60%	50%	57%
Number of surveys	20	4	36	31	42	22	155

Making the most of our resources

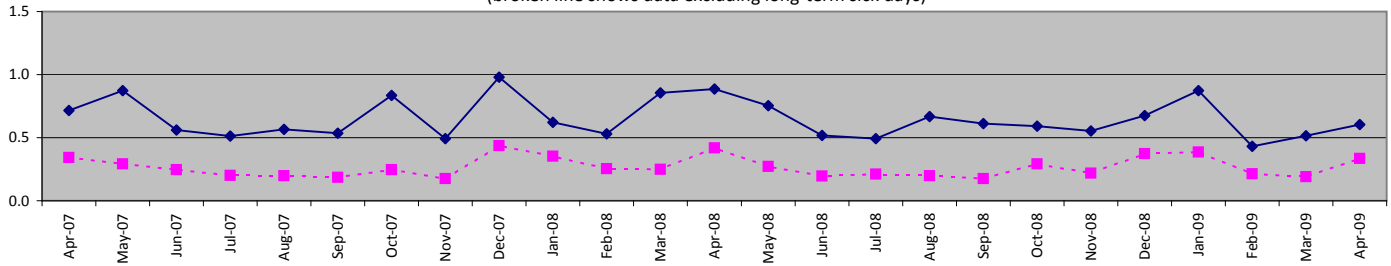
SPI 13.1 Force Target

All Police officer sickness YTD = **0.61**

All Police officer sickness Apr = **0.61**

Police officers in OCU's

Sickness and injury absence days per officer by month
(broken line shows data excluding long-term sick days)

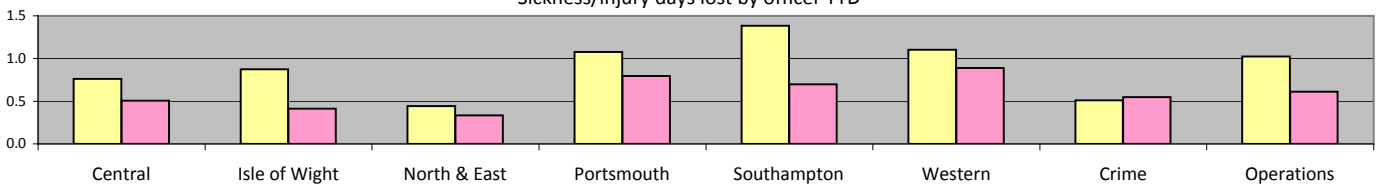


Force target for 09/10 = 7.5 days or fewer per officer (0.625 for 1 month) YTD = **0.60** days lost per officer

	Central	Isle of Wight	North & East	Portsmouth	Southampton	Western	Crime	Operations	OCU Totals
YTD Apr 09 - Apr 09	0.50	0.41	0.33	0.79	0.70	0.89	0.55	0.61	0.60
YTD Apr 08 - Apr 08	0.76	0.88	0.44	1.08	1.38	1.10	0.51	1.02	0.89
This month	0.50	0.41	0.33	0.79	0.70	0.89	0.55	0.61	0.60
% change	-33.8%	-52.8%	-25.0%	-26.3%	-49.7%	-19.5%	7.5%	-40.0%	-32.0%
Short Term only Apr 09 - Apr 09	0.35	0.41	0.29	0.40	0.34	0.42	0.13	0.36	0.33

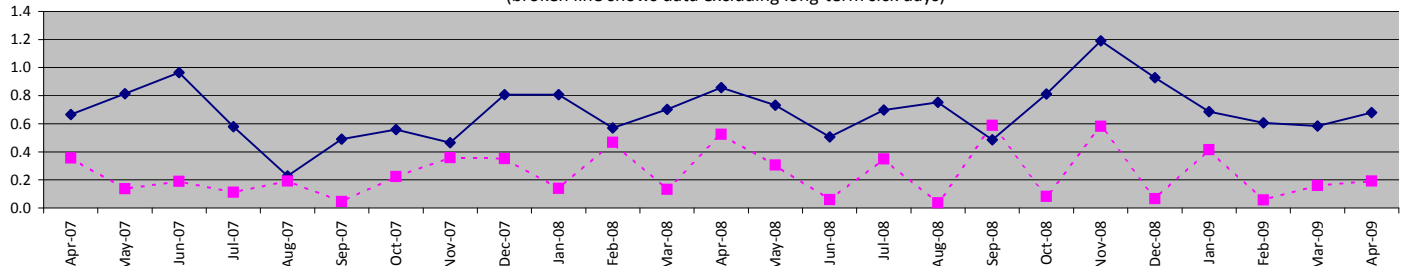
From January 09 "Operations" no longer includes SO Portfolio and Projects Staff

Sickness/injury days lost by officer YTD



Police officers not in OCU's

Sickness and injury absence days per police officer by month
(broken line shows data excluding long-term sick days)



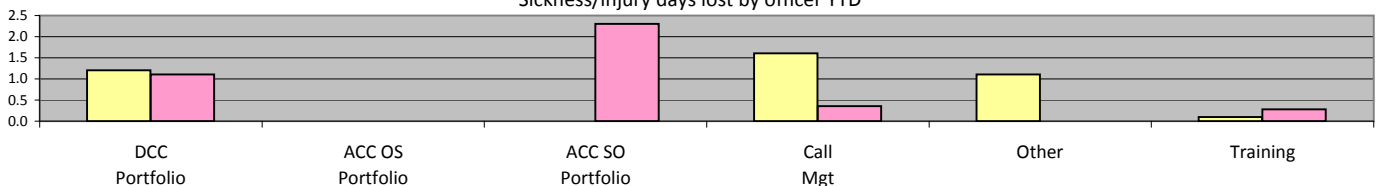
Force target for 09/10 = 7.5 days or fewer per officer (0.625 for 1 month) YTD = **0.61** days lost per officer

	DCC Portfolio	ACC OS Portfolio	ACC SO Portfolio	Call Mgt	Other	Training	Non-OCU Totals
YTD Apr 09 - Apr 09	1.11	0.00	2.30	0.35	0.00	0.28	0.61
YTD Apr 08 - Apr 08	1.20	0.00	0.00	1.61	1.11	0.10	0.89
This month	1.11	0.00	2.30	0.35	0.00	0.28	0.61
% change	-8.1%	0.0%	0.0%	-78.1%	-100.0%	178.7%	-31.6%
Short Term only Apr 09 - Apr 09	0.00	0.00	0.20	0.35	0.00	0.28	0.20

ACC OS Portfolio excludes Call Mgt & Training figures which are reported on separately. No police officers work within DoF Portfolio.

From Jan 09 -SO Portfolio includes CJD, SO Portfolio & Projects Staff; Other includes CC Portfolio, TO Portfolio & Finance Portfolio

Sickness/injury days lost by officer YTD



Making the most of our resources

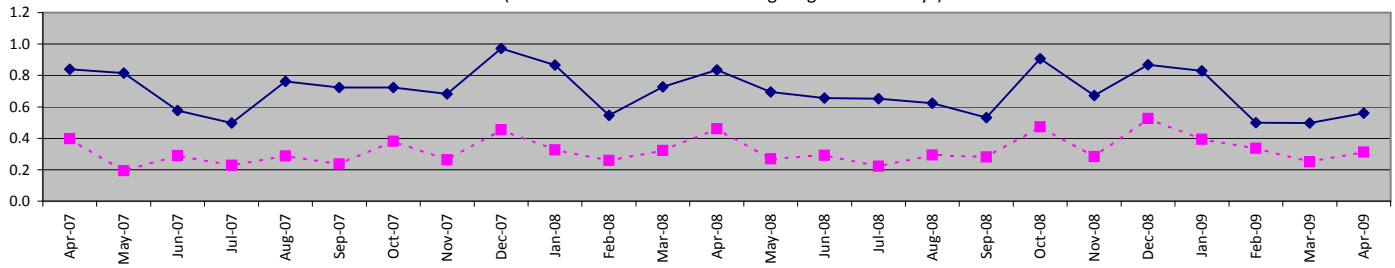
SPI 13.1 Force Target

All Police staff sickness YTD = **0.64**

All Police staff sickness Apr = **0.64**

Police staff in OCUs

Sickness and injury absence days per police staff member by month (broken line shows data excluding long-term sick days)



Force target for 09/10 = 7.5 days or fewer per staff (0.625 for 1 month) YTD = **0.55** days lost per staff member

	Central	Isle of Wight	North & East	Portsmouth	Southampton	Western	Crime	Operations	OCU Totals
YTD Apr 09 - Apr 09	0.66	0.33	0.85	0.62	0.40	0.28	0.74	0.22	0.55
YTD Apr 08 - Apr 08	0.83	1.01	1.03	0.99	1.08	0.76	0.63	0.39	0.84
This month	0.66	0.33	0.85	0.62	0.40	0.28	0.74	0.22	0.55
% change	-20.2%	-67.0%	-17.0%	-37.4%	-63.2%	-62.9%	16.2%	-43.6%	-33.9%
Short Term only Apr 09 - Apr 09	0.28	0.18	0.54	0.51	0.14	28.2%	0.30	0.22	0.31

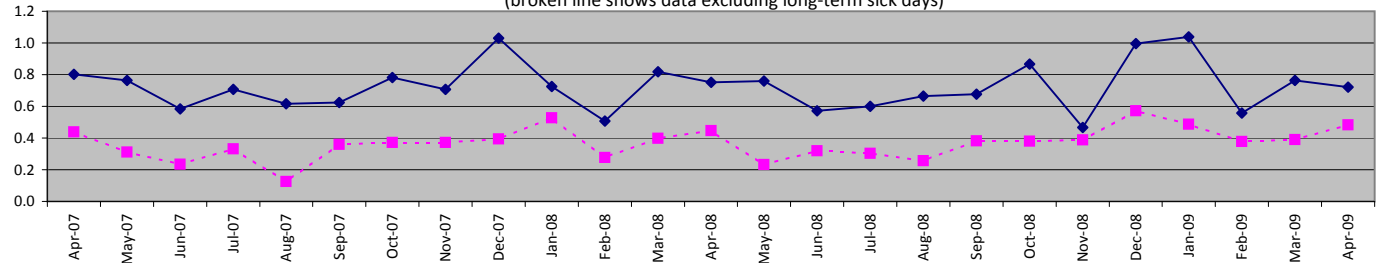
From January 09 "Operations" no longer includes SO Portfolio and Projects Staff

Sickness/injury days lost by Police Staff YTD



Police staff not in OCUs

Sickness and injury absence days per police staff member by month (broken line shows data excluding long-term sick days)



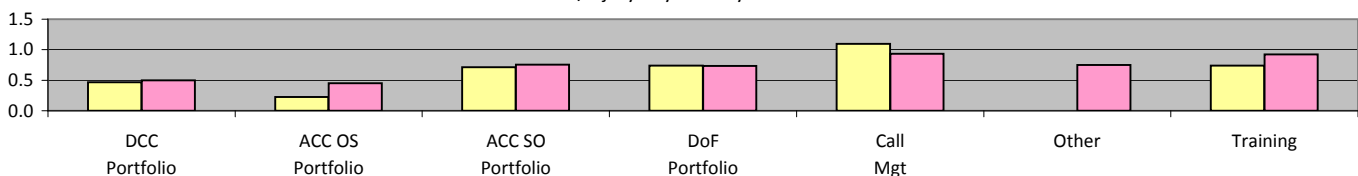
Force target for 09/10 = 7.5 days or fewer per staff (0.625 for 1 month) YTD = **0.74** days lost per staff member

	DCC Portfolio	ACC OS Portfolio	ACC SO Portfolio	DoF Portfolio	Call Mgt	Other	Training	Non-OCU Totals
YTD Apr 09 - Apr 09	0.50	0.45	0.75	0.74	0.93	0.75	0.92	0.74
YTD Apr 08 - Apr 08	0.46	0.23	0.71	0.74	1.10	0.00	0.74	0.73
This month	0.50	0.45	0.75	0.74	0.93	0.75	0.92	0.74
% change	7.1%	99.4%	5.8%	-0.5%	-15.0%	0.0%	25.0%	0.6%
Short Term only Apr 09 - Apr 09	0.38	0.13	0.54	0.29	0.65	0.75	0.47	0.49

ACC OS Portfolio excludes Call Mgt & Training figures which are reported on separately.

From Jan 09 - SO Portfolio includes CJD, SO Portfolio and Projects Staff; Other includes CC Portfolio, TO Portfolio and Finance Portfolio

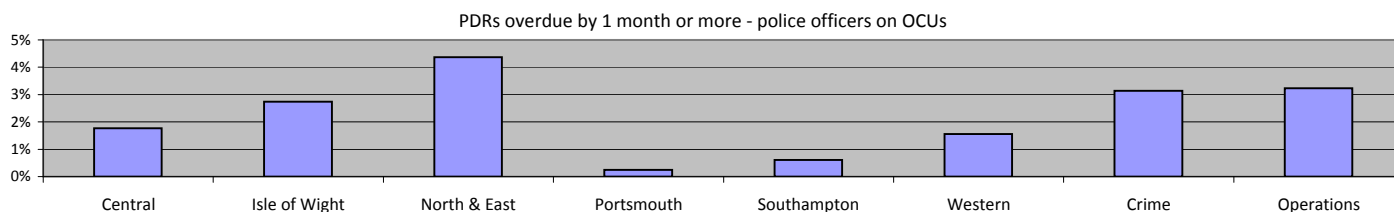
Sickness/injury days lost by Police Staff YTD



Making the most of our resources

Overdue PDRs

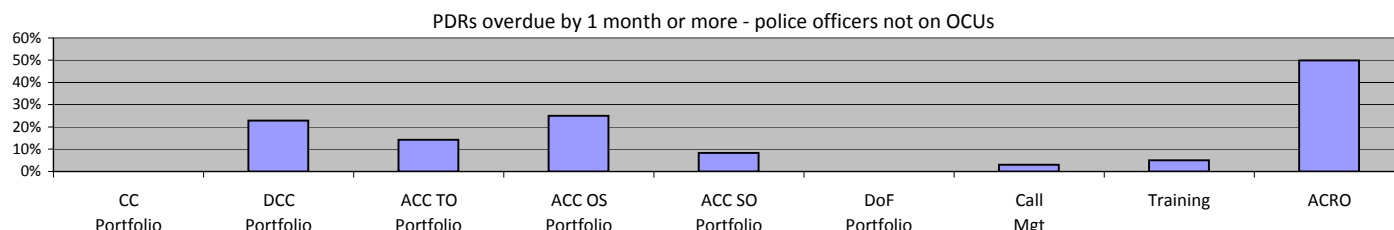
Police officer PDRs - police officers in OCUs



April 2009	Central	Isle of Wight	North & East	Portsmouth	Southampton	Western	Crime	Operations
Population	621	219	549	413	497	512	415	402
Overdue	11	6	24	1	3	8	13	13
% overdue	1.8%	2.7%	4.4%	0.2%	0.6%	1.6%	3.1%	3.2%

From January 09 "Operations" no longer includes SO Portfolio and Projects Staff

Police officer PDRs - police officers not on OCUs

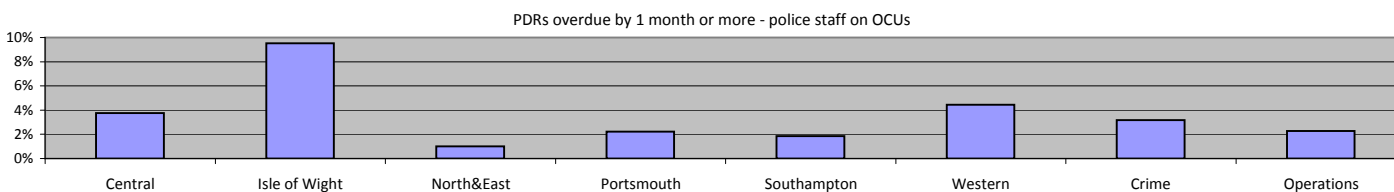


April 2009	CC Portfolio	DCC Portfolio	ACC TO Portfolio	ACC OS Portfolio	ACC SO Portfolio	DoF Portfolio	Call Mgt	Training	ACRO
Population	9	48	7	8	12	N/A	33	60	2
Overdue	0	11	1	2	1	N/A	1	3	1
% overdue	0.0%	22.9%	14.3%	25.0%	8.3%	N/A	3.0%	5.0%	50.0%

ACC OS Portfolio excludes Call Mgt & Training figures which are reported on separately. No police officers work within DoF Portfolio

From Jan 09 - SO Portfolio includes CJD, SO Portfolio and Projects Staff

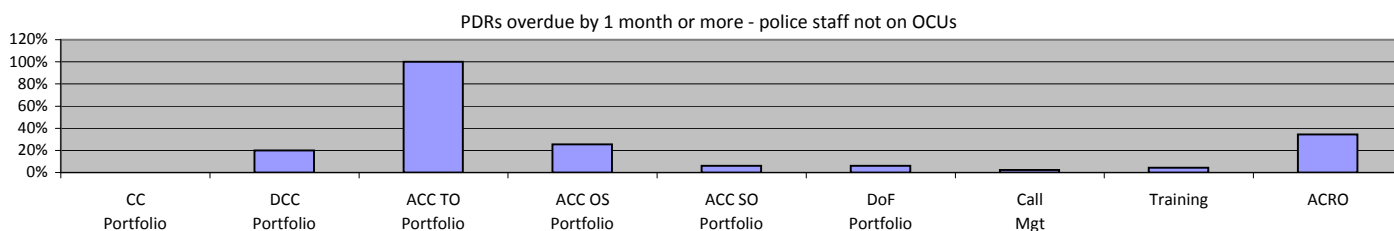
Police staff PDRs - police staff in OCUs



April 2009	Central	Isle of Wight	North&East	Portsmouth	Southampton	Western	Crime	Operations
Population	240	105	201	180	216	202	316	132
Overdue	9	10	2	4	4	9	10	3
% overdue	3.8%	9.5%	1.0%	2.2%	1.9%	4.5%	3.2%	2.3%

From January 09 "Operations" no longer includes SO Portfolio and Projects Staff

Police staff PDRs - police staff not in OCUs



April 2009	CC Portfolio	DCC Portfolio	ACC TO Portfolio	ACC OS Portfolio	ACC SO Portfolio	DoF Portfolio	Call Mgt	Training	ACRO
Population	2	301	2	63	345	145	411	93	61
Overdue	0	60	2	16	21	9	9	4	21
% overdue	0.0%	19.9%	100.0%	25.4%	6.1%	6.2%	2.2%	4.3%	34.4%

ACC OS Portfolio excludes Call Mgt & Training figures which are reported on separately

From Jan 09 - SO Portfolio includes CJD, SO Portfolio and Projects Staff

Making the most of our resources

NCRS compliance

	Central	Isle of Wight	North & East	Portsmouth	Southampton	Western	Crime
Self-Inspection	91.0%	85.0%	80.0%	66.0%	81.0%	90.0%	No data

Note: Self-Inspections - only appealed records are moderated by the Force Crime Registrar

These inspections were undertaken in March 2008

Budget spend

There is currently no data available for this measure as it is the beginning of the year

	Central	Isle of Wight	North & East	Portsmouth	Southampton	Western	Crime	Operations
Budget variance	Data available in May							

Efficiency savings

SPI 12.1

There is currently no data available for this measure as it is the beginning of the year

Specialist support

8 OCU Commitment to ANPR Operations - April 09								
	OCU Supported							Total
	1	2	3	4	5	6	Other	
No. of Ops	10	0	0	7	4	2	0	23
Arrests	6			7	9	0		22
S.165 Vehicle Seizures	24			36	28	1		89
Impaired Drivers	4			10	15	4		33
C12a	32			0	6	6		44
C12b	0			1	0	0		1
Total Results	66	0	0	54	58	11	0	189

8 OCU Arrests for Death by Driving Offences April 09			
	Arrested	No. of arrests	Disposals
4/04 Causing Death by Dangerous Driving	0	0	0
4/06 Causing Death by Careless Driving under Influence of Drink or Drugs	1	1	1
4/08 Causing Death by Careless or Inconsiderate Driving	0	0	0
4/09 Causing Death by Driving: Unlicensed, Disqualified or Uninsured Drivers	0	0	0
Total	1	1	1

Interventions in support of OCUs and Force Strategy YTD									
	Persons Arrested	April 2009 Incidents attended*1			FPNs*2		S165		
		Total	% DSP	% ONS	Disorder	Other			
Air Support Unit		Data given as a whole for 8 OCU							
Dog Support Unit	23						0	12	
Force Support Unit	40						0	0	
Ops Policy and Planning	0						0	0	
Specialist Firearms Officers	16						0	2	
Armed Response Vehicles	95						1	44	
Roads Policing Unit	204						1	1205	
Total	378	18166	16.20%	11.16%	2	1263	4170		

*1 Altaris data - Dispatch (DSP) and Arrival (ONS) of 8 OCU units as a percentage of Grade 1 and 2 incidents created.

8 OCU units were OnScene at 68.88% of those incidents they were dispatched to.

8 OCU units currently equate to approx 8% of the Force frontline operational officers.

*2 FPNS are Fixed Penalty Notices issued.

*3 This data is 1 month in arrears so numbers shown here are for April 08 to March 09. Vehicles seized under Section 165 of the Road Traffic Act are for No Insurance or No Driving Licence.

Equipping our team to deliver

Financial awareness training

Financial awareness training will be undertaken for budget holders with the aim of ensuring a minimum of 95% of budget holders are trained by the end of the financial year. There are currently 8 courses planned for 2009/2010

Preparing for frontline supervision

A leadership project is underway and a formal Force leadership target will be established with supporting material to be published here in the coming months

Frontline supervision training

	Apr 09 - Mar 10		Year to Date (April 09)	
	Courses Planned	Numbers Trained	Courses Planned	Numbers Trained
Sergeants Operational Activities	6	108	1	8
Inspectors Statutory Responsibilities	5	70	1	12
First Line Manager - Leadership Part 1	6	96	0	0
First Line Manager - Leadership Part 2	6	96	1	12
First Line Manager - Action Learning Sets	18	108	2	20

Mobile data

A mobile data project is underway - information will be available not before September 2009

Minority Ethnic Officer Recruitment

SPI 3.1

	All recruits	Minority ethnic recruits	%
YTD April 2009	16	1	6.3%

Female Officer Representation

SPI 3.2

	Male strength	Female strength	%
YTD April 2009	2722.0	1014.7	27.2%