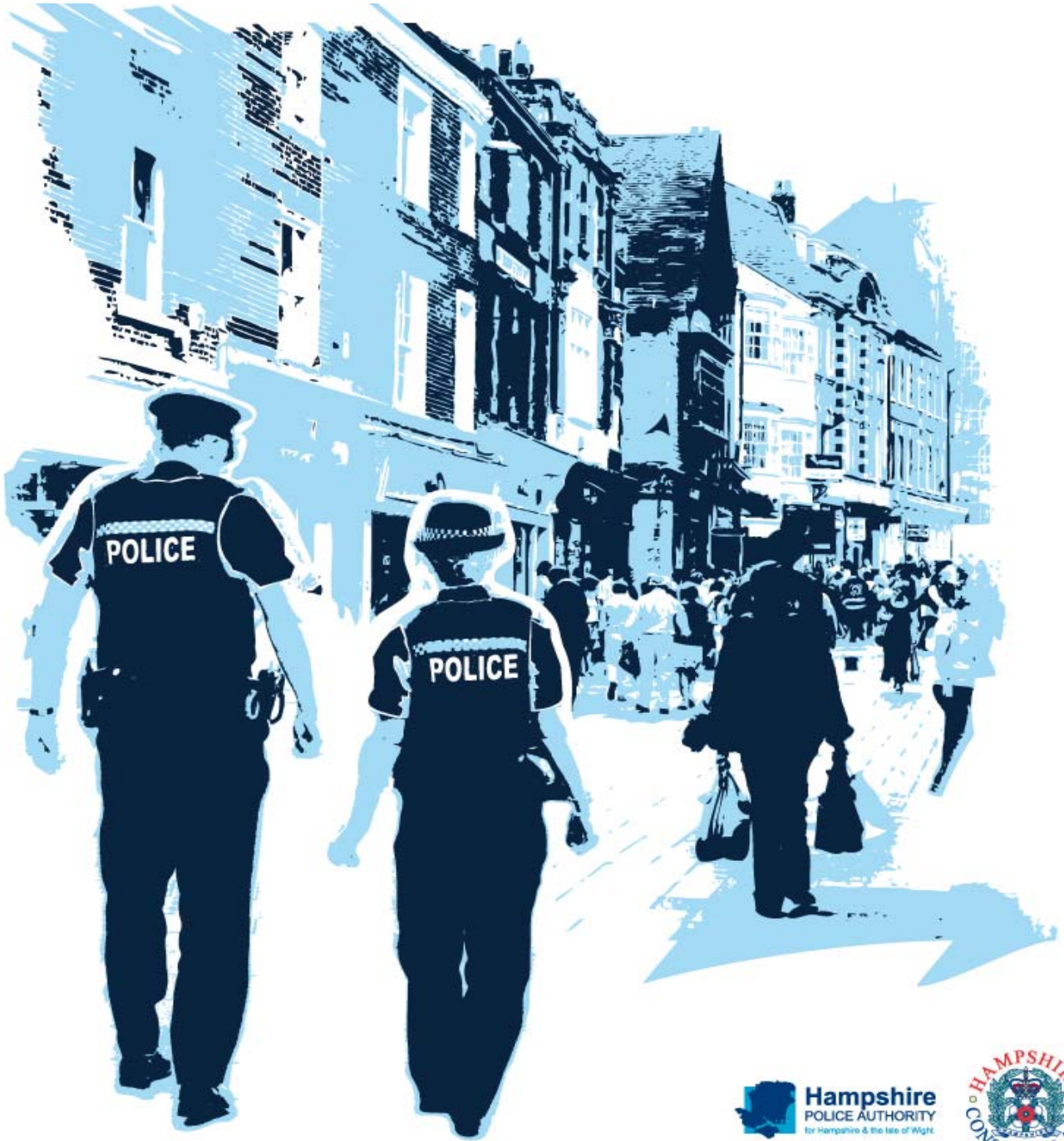


Performance Profile November 2010



2010/11 Reporting Year

This document contains a strategic overview of the Constabulary's performance. It has a variety of performance measures within it. The format of the profile has been aligned to the Policing Priorities identified by the Control Strategy. It provides information on our performance against Force targets, some of the APACS Indicators and the Policing Pledge. It also aims to provide supplementary information to assist in understanding reasons behind the performance in these areas. It has been designed as a headline document that will enable our customers, both internally and externally, to easily assess performance information for key domains. This year additional monitoring information within the six domains of the Policing Priorities will be published quarterly - a calendar of publication is located at the bottom of this page. If during a month an issue is identified which needs to be highlighted this will be done through 'exception reporting'.

A matrix can be found at the front of the profile which reflects our year to date performance against our targets.

Performance in key areas is then explored in more depth with an indication of where each measure has originated - for example, APACS Indicator or a Force Control Strategy (FCS) measure.

Where applicable, within the document, MSG (Most Similar Group) data is published along with the crime and detection data. MSGs are calculated by the Home Office based on a number of socio-demographic & geographic variables which are strongly linked to crime/incident levels and the fear of crime. These groups provide a benchmark for comparison of crime and detection rates. Below the applicable crime tables there are three rows relating to MSG data. The first provides the MSG position for the OCU/Force for that crime type. The second displays OCU Actual, this is the number of offences per 1,000 population. The third row shows the MSG Average which is the total number of offences per 1,000 population divided by the number within the MSG. The same three rows are provided in relation to detection data, where data is provided in % figures rather than per 1,000 population.

Please note: iQuanta data is provisional. Within the profile, Hampshire data is published and compared against the MSG average. The other forces within Hampshire's MSG are: Avon and Somerset, Bedfordshire, Essex Hertfordshire, Kent, Sussex and Thames Valley. We are unable to provide figures from iQuanta for these forces, due to the provisional nature of this data.

This document is then taken forward by key stakeholders within the organisation to the Force Performance Review Group, where it is used to highlight areas of good performance and those for development.

Crime OCU contribute to the following areas within this document, either via investigation, forensic support, and/or review of these crimes: homicide, serious violent, sexual and acquisitive crime, class A drug supply, drug seizures, domestic violence/hate crime, FIU form submissions, gun/knife crime (where this results in a major investigation/forensic support).

This is an evolving document and as such, the contents of which may alter over time and any feedback would be welcomed by the Performance Review Team.

Calendar of Quarterly Reporting

April - Catching criminals & managing offenders and Protecting our communities
 May - Making the most of our resources and Equipping our team to deliver
 June - Providing an excellent service and An active presence in every neighbourhood
 July - Catching criminals & managing offenders and Protecting our communities
 August - Making the most of our resources and Equipping our team to deliver
 September - Providing an excellent service and An active presence in every neighbourhood
 October - Catching criminals & managing offenders and Protecting our communities
 November - Making the most of our resources and Equipping our team to deliver
 December - Providing an excellent service and An active presence in every neighbourhood
 January - Catching criminals & managing offenders and Protecting our communities
 February - Making the most of our resources and Equipping our team to deliver
 March - The year end profile will have all six domain areas included

MSG Colour Key

Force	OCU
1-2	1-4
3-4	5-8
5-6	9-12
7-8	13-15

Index

Page FCS = Force Control Strategy

Year to date performance matrix

2	Summary	including notes on matrices terminology
3	Index	
4	Year to date targets matrix	

Providing an excellent service

5	National public confidence measure	APACS 2.2	FCS	iQuanta
5	Local confidence survey data		FCS	Consultation & Research Team
6	Overall satisfaction	APACS 1.1	FCS	Consultation & Research Team
6	Being kept informed			Consultation & Research Team
6	Comparative satisfaction of minority ethnic groups	APACS 1.3		Consultation & Research Team
6	Satisfaction of victims of racist incidents	APACS 1.2		Consultation & Research Team
6	MSG user satisfaction data			Consultation & Research Team

An active presence in every neighbourhood

7	Rowdy and nuisance behaviour		FCS	Business Objects
8	Criminal damage		FCS	Business Objects

Catching criminals and managing offenders

9	Serious acquisitive crime	APACS 5.2	FCS	Business Objects
10	Breakdown: Robbery, dwelling burglary, vehicle crime			Business Objects
10	Breakdown: Theft of a motor vehicle, theft from a motor vehicle			Business Objects
10	Organised crime groups		FCS	7 OCU Performance Team

Protecting our communities

11	Violence against the person with injury		FCS	Business Objects
12	Serious violent crime	APACS 5.1		Business Objects
13	Assault with less serious injury	APACS 5.3		Business Objects
14	Reduction in dwelling burglary		FCS	Business Objects

Making the most of our resources

15	BME recruitment		FCS	Personnel
15	Minority ethnic officer recruitment	APACS 3.1		Personnel
15	Minority ethnic police staff recruitment			Personnel
15	Female officer representation	APACS 3.2		Personnel

Equipping our team to deliver

15	Staff confidence in the organisation		FCS	Consultation & Research Team
----	--------------------------------------	--	-----	------------------------------

Monitoring Information for Making the most of our resources

16	Budget spend			Finance
16	Efficiency savings			Finance
17	Specials Scorecard			Specials team
18	Specialist support 7 OCU			7 OCU Performance Team
18	Specialist support 8 OCU			8 OCU Performance Team
18	Overtime costs			Finance
19	Sickness	APACS 13.1&13.2		Delphi + Personnel - staffing figures
19	Overdue PDRs			Personnel

Monitoring Information for Equipping our team to deliver

20	Financial awareness training			Training Dept
20	Preparing for frontline supervision training			Training Dept

Exception Reports

20	Drug seizures			Performance Team
----	---------------	--	--	------------------

Year to date performance targets matrix

	Target	Actual	Central	Isle of Wight	North & East	Portsmouth	Southampton	Western
Providing an excellent service								
Confidence in local police	55.3%	52.9%	This is a Force measure					
Local confidence measure (latest quarter)	87.3%	83.0%	84.0%	83.0%	83.0%	82.0%	81.0%	83.0%
Overall satisfaction (data for rolling 12 months)	68.0%	69.0%	70.0%	69.0%	69.0%	68.0%	65.0%	73.0%
An active presence in every neighbourhood								
Rowdy & nuisance behaviour (inc vehicle nuisance)	<46358	44055	7681	3054	8217	7239	10616	7248
	OCU specific targets		9183	3042	8565	7238	10369	7961
Reduce criminal damage	<18328	16892	3448	1543	3201	2283	3448	2969
	OCU specific targets		3973	1351	3583	2367	3761	3293
Catching criminals & managing offenders								
Serious acquisitive crime SD	>15%	13.0%	15.8%	16.9%	15.9%	10.1%	11.6%	10.7%
Organised crime group (OCG) - disruptions	>40%	183%	Owned by Crime OCU					
Protecting our communities								
Reduce violence against the person with injury	<9581	9745	1993	881	1510	1783	2164	1414
	OCU specific targets		1946	655	1579	1712	2230	1459
Reduction in dwelling burglary	<3570	3349	552	200	580	630	898	489
	OCU specific targets		701	171	751	657	679	612
Making the most of our resources								
BME recruitment	>5%	5.3%	This is a Force measure					
Equipping our staff to deliver								
Staff confidence in the organisation	61%	data unavailable	This is a Force measure					
Force Total - targets achieved		6	5	2	6	3	2	5

Notes to be read in conjunction with matrices

All citizen focus data
SD
BME
OCU specific targets

Based on "completely or very satisfied"
Sanction detections
Black and minority ethnic
OCU specific targets are rounded to 0 decimal places; the actual figure may therefore seem the same but appear amber due to this rounding

Force target areas for providing an excellent service

	Target	Actual	Central	Isle of Wight	North & East	Portsmouth	Southampton	Western
Confidence in local police (latest data)	55.3%	52.9%	This is a Force measure					
Local Confidence Measure (latest data)	87.3%	83.0%	84.0%	83.0%	83.0%	82.0%	81.0%	83.0%
Overall satisfaction (rolling 12 months)	68.0%	69.0%	70.0%	69.0%	69.0%	68.0%	65.0%	73.0%

National Public Confidence Measure

APACS 2.2 Force Target

This data is based on 'The police and local council are dealing with the anti-social behaviour and crime issues that matter in this area' The Home Office has set a target to achieve a 12% improvement by 2012 against the baseline of 47.3%. Hampshire aimed to improve by 4% each year, as this is the second year, our target this year is an 8% improvement on baseline which equates to 55.3%

Jun-10

Hampshire	52.9%
MSG Position	2 of 8
MSG average	51.2%

Local Confidence Survey Data

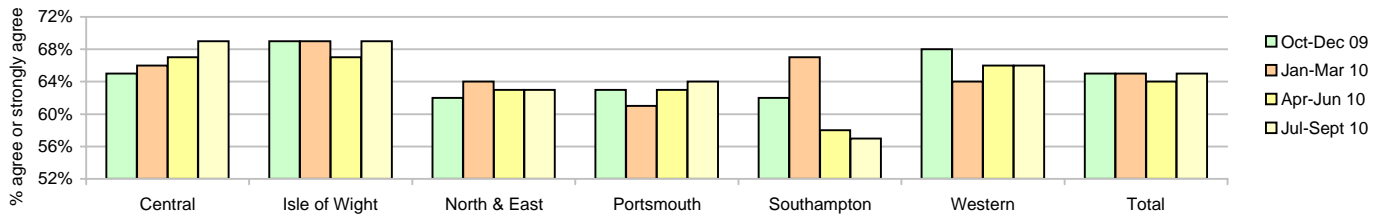
Figures relate to the percentage of respondents who agree or strongly agree with the question. Hampshire's local surveys have a confidence level of +/-4%. This means that changes of less than 4% may not reflect a real change in performance.

The police and local council are dealing with the anti-social behaviour and crime issues that matter in this area

This question is no longer asked as it has ceased to be a Home Office target. It has therefore been removed from the profile.

The police are dealing with the things that matter locally

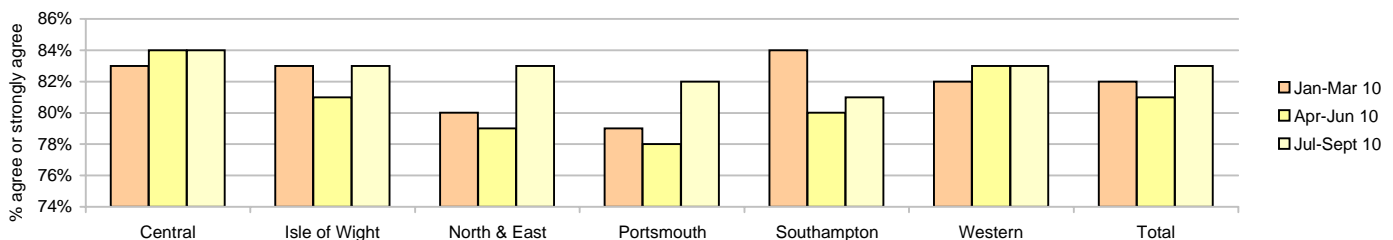
	Central	Isle of Wight	North & East	Portsmouth	Southampton	Western	Force	No. Surveys
October - December 2009	65%	69%	62%	63%	62%	68%	65%	3822
January - March 2010	66%	69%	64%	61%	67%	64%	65%	3708
April - June 2010	67%	67%	63%	63%	58%	66%	64%	3612
July - September 2010	69%	69%	63%	64%	57%	66%	65%	3620



Taking everything into account, I have confidence in the Police in this area

Force Target

Target: 87.3%	Central	Isle of Wight	North & East	Portsmouth	Southampton	Western	Force	No. Surveys
January - March 2010	83%	83%	80%	79%	84%	82%	82%	3708
April - June 2010	84%	81%	79%	78%	80%	83%	81%	3612
July - September 2010	84%	83%	83%	82%	81%	83%	83%	3620



Force target areas for providing an excellent service

Overall satisfaction (user satisfaction survey results)

APACS 1.1 Force Target

Rolling 12 months data relates to: Dec 09 - Nov 10; rolling 3 months data relates to Sep 10 - Nov 10

Overall satisfaction includes burglary, vehicle crime, violent crime and minor injury RTCs for % completely or very satisfied

Target 68%	Central	Isle of Wight	North & East	Portsmouth	Southampton	Western	Force	No. Surveys
Rolling 12 months	70%	69%	69%	68%	65%	73%	69%	7639
Rolling 3 months	66%	63%	65%	69%	61%	71%	66%	1903

Being kept informed (user satisfaction survey results)

Rolling 12 months data relates to: Dec 09 - Nov 10; rolling 3 months data relates to Sep 10 - Nov 10

Being kept informed includes burglary, vehicle crime, violent crime and minor injury RTCs for % completely or very satisfied

	Central	Isle of Wight	North & East	Portsmouth	Southampton	Western	Force	No. Surveys
Rolling 12 months	59%	61%	57%	57%	56%	63%	59%	7444
Rolling 3 months	51%	54%	52%	57%	48%	58%	53%	1880

Comparative satisfaction of minority ethnic groups

APACS 1.3

Data relates to interviews which took place Dec 09 - Nov 10

These figures are for overall satisfaction for burglary, vehicle crime, violent crime, minor injury RTCs and racist incidents

	Completely and very satisfied	Completely, very and fairly satisfied	No. Surveys
White	69.4%	85.2%	7055
Minority Ethnic	56.8%	79.7%	444
Satisfaction Gap	12.6%	5.5%	

Satisfaction of victims of racist incidents

APACS 1.2

These figures relate to interviews which took place Oct 09 - Sep 10; these will be updated quarterly

Racist incident overall satisfaction = % completely or very satisfied

	Central	Isle of Wight	North & East	Portsmouth	Southampton	Western	Force
%	55%	90%	53%	67%	56%	60%	60%
Number of surveys	33	10	32	48	64	25	212

MSG information for user satisfaction

Latest iQuanta data for MSG for the 12 months ending June 2010 (iQuanta calculate satisfaction % based on those responding that they are completely, very or fairly satisfied)

	Previous MSG position	Current MSG position	Change		Previous MSG position	Current MSG position	Change
Vehicle crime				Burglary			
Ease of contact	4/8	4/8	↔	Ease of contact	4/8	3/8	↑
Actions taken	4/8	4/8	↔	Actions taken	6/8	5/8	↑
Follow up	4/8	4/8	↔	Follow up	1/8	1/8	↔
Treatment	5/8	5/8	↔	Treatment	5/8	6/8	↓
Whole Experience	4/8	4/8	↔	Whole Experience	4/8	3/8	↑
Violent crime				RTC (minor injury)			
Ease of contact	5/8	5/8	↔	Ease of contact	1/8	1/8	↔
Actions taken	4/8	4/8	↔	Actions taken	2/8	2/8	↔
Follow up	6/8	6/8	↔	Follow up	1/8	1/8	↔
Treatment	5/8	6/8	↓	Treatment	3/8	2/8	↑
Whole Experience	4/8	4/8	↔	Whole Experience	3/8	3/8	↔
All users (excluding racist incidents)							
Ease of contact	1/8	1/8	↔				
Actions taken	4/8	2/8	↑				
Follow up	1/8	1/8	↔				
Treatment	5/8	5/8	↔				
Whole Experience	3/8	3/8	↔				

Force target areas for an active presence in every neighbourhood

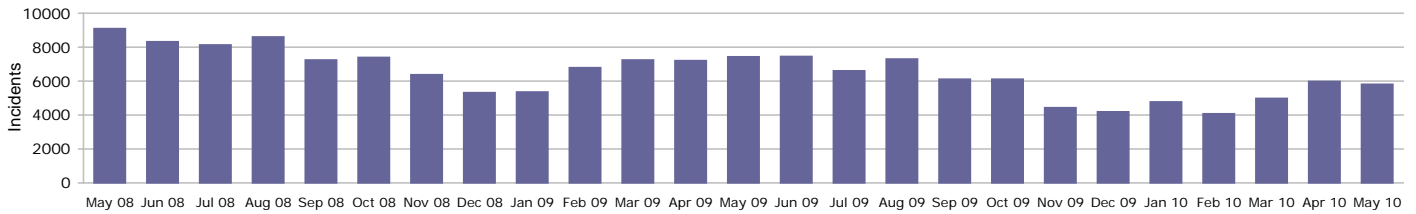
	Target	Actual	Central	Isle of Wight	North & East	Portsmouth	Southampton	Western
Rowdy & nuisance behaviour (inc Vehicle Nuisance)	46358	44055	7681	3054	8217	7239	10616	7248
	OCU specific targets		9183	3042	8565	7238	10369	7961
Reduce criminal damage	18328	16892	3448	1543	3201	2283	3448	2969
	OCU specific targets		3973	1351	3583	2367	3761	3293

Rowdy & nuisance behaviour (including vehicle)

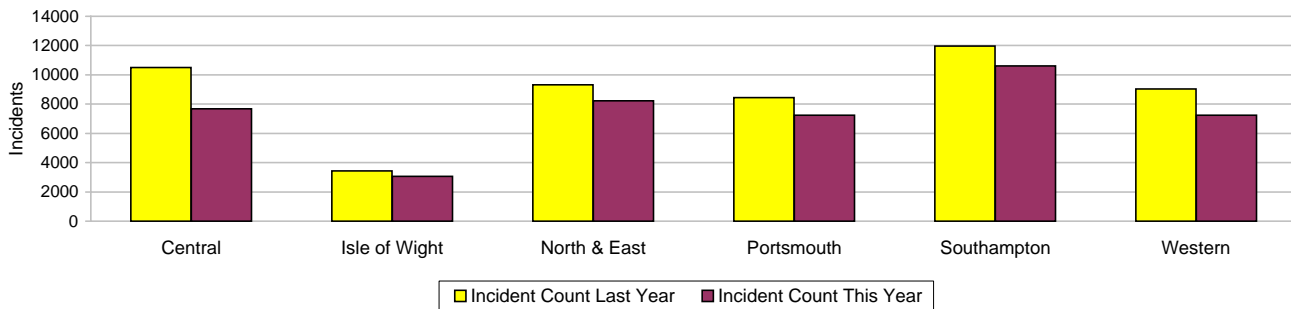
Force Target

In 2009-2010 Rowdy and Nuisance included Inappropriate use of Fireworks, Rowdy & Inconsiderate, Substance Misuse and Street Drinking, with Vehicle Related Nuisance being a separate entity for monitoring purposes however the decision this year has been to bring all key nuisance elements into one section. This data is sourced from RMS and does not reflect the complete NSIR return for Hampshire.

This target is based on a subset of the anti-social behaviour categories, it does not cover all aspects of anti-social behaviour.



Incidents	Central	Isle of Wight	North & East	Portsmouth	Southampton	Western	Force
YTD Incidents	7681	3054	8217	7239	10616	7248	44055
YTD Target	9183	3042	8565	7238	10369	7961	46358
YTD 09/10 Incidents	10498	3440	9318	8437	11959	9045	52697
This month	726	261	810	719	1058	631	4205
% change from 09/10	-26.83%	-11.22%	-11.82%	-14.20%	-11.23%	-19.87%	-16.40%



Note: MSG data is always published a month in arrears.

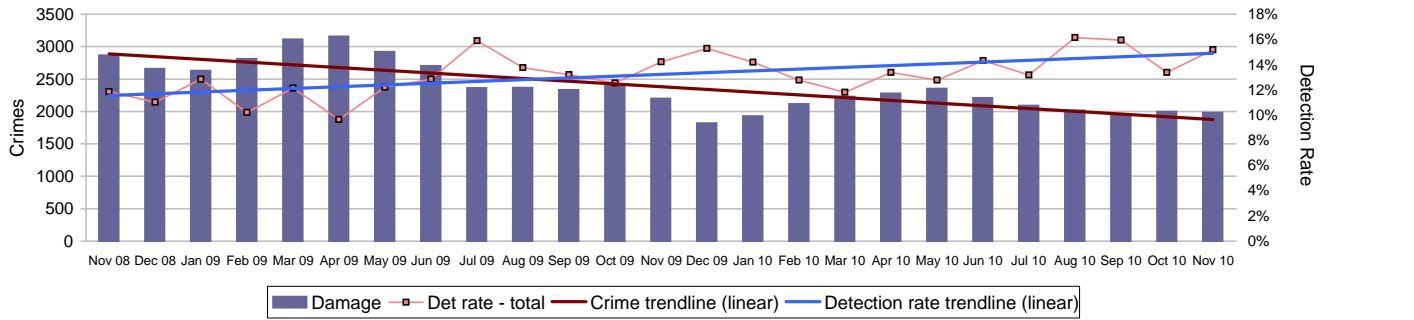
For an explanation of this data, refer to the Summary on page 2

Page 7 of 22

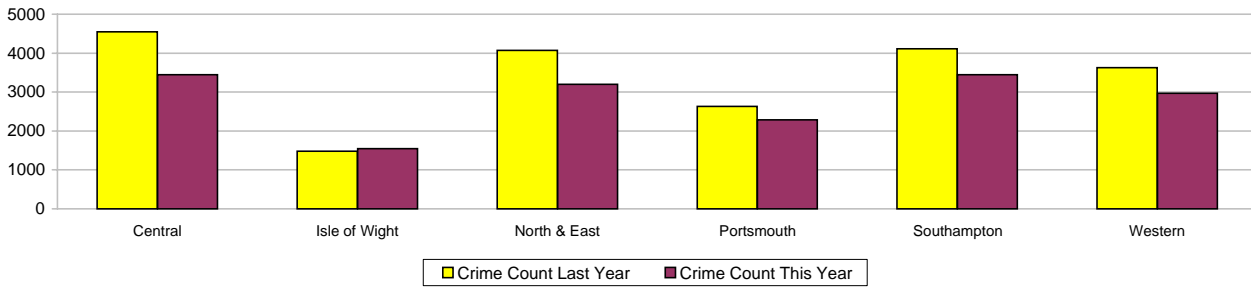
November 2010

Force target areas for an active presence in every neighbourhood

Criminal damage

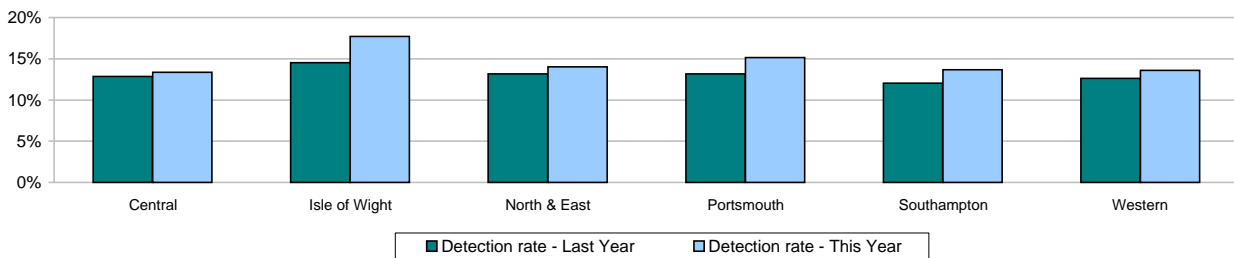


Crimes	Central	Isle of Wight	North & East	Portsmouth	Southampton	Western	Force
YTD Crimes	3448	1543	3201	2283	3448	2969	16892
YTD Target	3973	1351	3583	2367	3761	3293	18328
YTD 09/10 Crimes	4549	1481	4073	2633	4115	3626	20477
This month	398	181	418	264	366	356	1983
% change from 09/10	-24.20%	4.19%	-21.41%	-13.29%	-16.21%	-18.12%	-17.51%
MSG position	9 of 15	15 of 15	8 of 15	12 of 15	14 of 15	6 of 15	6 of 8
MSG actual	2.669	3.946	2.585	3.988	5.382	2.529	3.198
MSG average	2.672	3.184	2.598	3.713	4.054	2.682	3.016



Detections	Central	Isle of Wight	North & East	Portsmouth	Southampton	Western	Force
YTD Detection Rate	13.37%	17.69%	14.03%	15.16%	13.69%	13.57%	14.23%
This month	13.32%	18.23%	15.55%	14.77%	15.57%	15.17%	15.18%
YTD 09/10 Detections	12.84%	14.52%	13.18%	13.18%	12.03%	12.63%	12.87%
MSG position	9 of 15	3 of 15	11 of 15	2 of 15	6 of 15	7 of 15	6 of 8
MSG actual	12.85%	18.07%	12.85%	15.33%	13.84%	12.99%	13.86%
MSG average	13.32%	14.80%	13.88%	12.94%	13.82%	13.24%	14.15%

Note: Detections refer to Sanction Detections ONLY



Note: MSG data is always published a month in arrears.

For an explanation of this data, refer to the Summary on page 2

November 2010

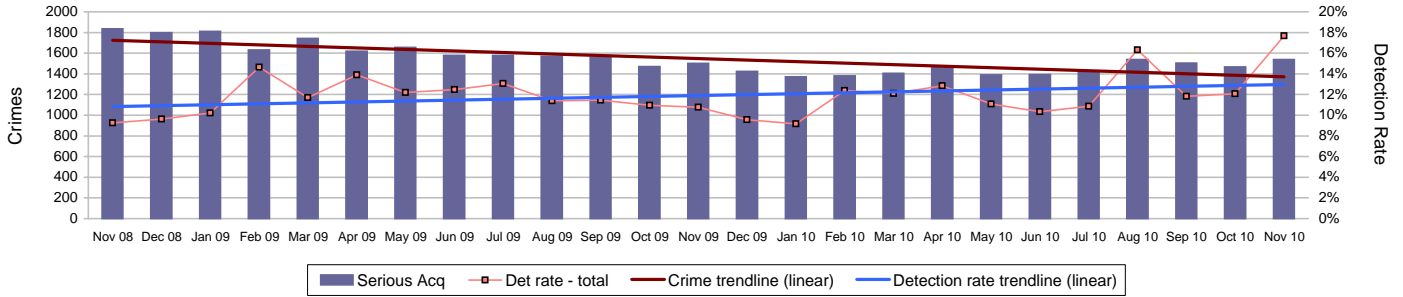
Force target areas for catching criminals and managing offenders

	Target	Actual	Central	Isle of Wight	North & East	Portsmouth	Southampton	Western
Serious acquisitive detection rate	15%	13.0%	15.8%	16.9%	15.9%	10.1%	11.6%	10.7%
OCG disruptions	40%	183.0%	Owned by Crime OCU					

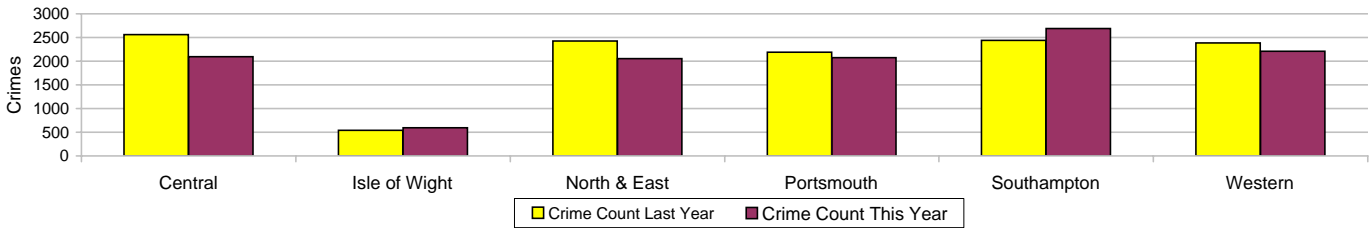
Serious acquisitive crime

APACS 5.2

Serious acquisitive crime consists of crimsec codes 28, 29, 34A, 34B, 37/2, 45 and 48



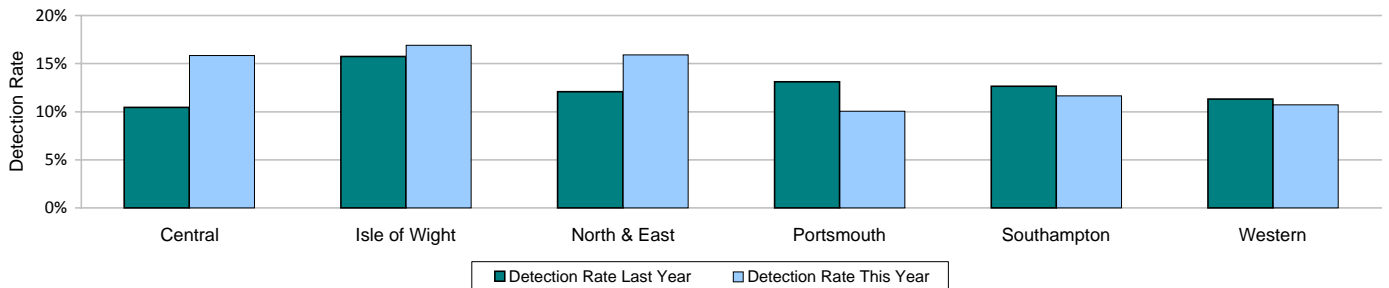
Crimes	Central	Isle of Wight	North & East	Portsmouth	Southampton	Western	Force
YTD Crimes	2096	597	2055	2077	2688	2212	11725
YTD 09/10 Crimes	2561	540	2425	2187	2438	2387	12538
This month	220	88	262	255	384	330	1539
% change from 09/10	-18.16%	10.56%	-15.26%	-5.03%	10.25%	-7.33%	-6.48%
MSG position	7 of 15	4 of 15	4 of 15	5 of 15	11 of 15	11 of 15	2 of 8
MSG actual	1.898	1.534	1.793	3.888	4.609	2.006	2.425
MSG average	2.256	2.008	2.239	4.365	4.115	2.007	2.802



Detections

Target >15%	Central	Isle of Wight	North & East	Portsmouth	Southampton	Western	Force
YTD Detection Rate	15.84%	16.92%	15.91%	10.06%	11.64%	10.71%	12.96%
This month	14.55%	10.23%	45.42%	11.37%	16.15%	6.36%	17.67%
YTD 09/10 Detections	10.46%	15.74%	12.08%	13.12%	12.63%	11.31%	12.05%
MSG position	11 of 15	7 of 15	12 of 15	11 of 15	12 of 15	12 of 15	5 of 8
MSG actual	12.87%	17.76%	9.92%	11.03%	11.78%	10.89%	11.60%
MSG average	13.34%	16.89%	12.94%	12.75%	15.32%	13.29%	12.91%

Note: Detections refer to Sanction Detections ONLY



Force target areas for catching criminals and managing offenders

Serious acquisitive crime breakdown

Robbery

Year to date	Central	Isle of Wight	North & East	Portsmouth	Southampton	Western	Force
Crimes	60	19	134	173	286	74	746
09/10 crimes	70	15	115	157	258	97	712
% change from 09/10	-14.29%	26.67%	16.52%	10.19%	10.85%	-23.71%	4.78%
MSG position	4 of 15	3 of 15	11 of 15	4 of 15	12 of 15	10 of 15	3 of 8
Detection rate	33.33%	42.11%	22.39%	17.34%	23.43%	25.68%	23.32%
MSG position	6 of 15	2 of 15	12 of 15	12 of 15	10 of 15	11 of 15	4 of 8
Nov 2010	Central	Isle of Wight	North & East	Portsmouth	Southampton	Western	Force
Crimes	6	3	13	25	34	9	90
Detection rate	100.00%	66.67%	23.08%	20.00%	23.53%	0.00%	26.67%

Dwelling burglary

Year to date	Central	Isle of Wight	North & East	Portsmouth	Southampton	Western	Force
Crimes	552	200	580	630	898	489	3349
09/10 crimes	770	180	765	643	714	610	3682
% change from 09/10	-28.31%	11.11%	-24.18%	-2.02%	25.77%	-19.84%	-9.04%
MSG position	4 of 15	3 of 15	3 of 15	2 of 15	7 of 15	2 of 15	2 of 8
Detection rate	22.28%	14.50%	13.10%	12.70%	17.93%	18.61%	16.72%
MSG position	9 of 15	9 of 15	14 of 15	8 of 15	10 of 15	5 of 15	4 of 8
Nov 2010	Central	Isle of Wight	North & East	Portsmouth	Southampton	Western	Force
Crimes	58	40	105	67	156	86	512
Detection rate	22.41%	5.00%	14.29%	14.93%	23.08%	11.63%	16.80%

Vehicle crime

Year to date	Central	Isle of Wight	North & East	Portsmouth	Southampton	Western	Force
Crimes	1484	378	1341	1274	1504	1649	7630
09/10 crimes	1721	345	1545	1387	1466	1680	8144
% change from 09/10	-13.77%	9.57%	-13.20%	-8.15%	2.59%	-1.85%	-6.31%
MSG position	9 of 15	4 of 15	4 of 15	10 of 15	11 of 15	13 of 15	3 of 8
Detection rate	12.74%	16.93%	16.48%	7.77%	5.65%	7.70%	10.29%
MSG position	6 of 15	6 of 15	10 of 15	10 of 15	13 of 15	13 of 15	6 of 8
Nov 2010	Central	Isle of Wight	North & East	Portsmouth	Southampton	Western	Force
Crimes	156	45	144	163	194	235	937
Detection rate	8.33%	11.11%	70.14%	8.59%	9.28%	4.68%	17.29%
Detection numbers	13	5	101	14	18	11	162

Theft of a motor vehicle

Year to date	Central	Isle of Wight	North & East	Portsmouth	Southampton	Western	Force
Crimes	297	95	328	188	380	270	1558
MSG position	3 of 15	4 of 15	10 of 15	2 of 15	11 of 15	3 of 15	2 of 8
Detection rate	18.86%	31.58%	21.04%	14.36%	8.95%	18.15%	17.01%
MSG position	8 of 15	3 of 15	9 of 15	7 of 15	12 of 15	11 of 15	4 of 8
Nov 2010	Central	Isle of Wight	North & East	Portsmouth	Southampton	Western	Force
Crimes	38	9	40	17	68	37	209
Detection rate	23.68%	22.22%	47.50%	11.76%	7.35%	18.92%	21.05%
Detection numbers	9	2	19	2	5	7	44

Theft from a motor vehicle

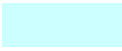
Year to date	Central	Isle of Wight	North & East	Portsmouth	Southampton	Western	Force
Crimes	1187	283	1013	1086	1124	1379	6072
MSG position	10 of 15	4 of 15	3 of 15	14 of 15	10 of 15	15 of 15	6 of 8
Detection rate	11.20%	12.01%	15.00%	6.63%	4.54%	5.66%	8.56%
MSG position	6 of 15	7 of 15	11 of 15	10 of 15	13 of 15	12 of 15	6 of 8
Nov 2010	Central	Isle of Wight	North & East	Portsmouth	Southampton	Western	Force
Crimes	118	36	104	146	126	198	728
Detection rate	3.39%	8.33%	78.85%	8.22%	10.32%	2.02%	16.21%
Detection numbers	4	3	82	12	13	4	118

Robbery, dwelling burglary and vehicle crime are the component parts of serious acquisitive crime. These individual crime types do not have targets.

Number of Organised Crime Groups (OCGs) disrupted

The Force target for 2010/11 is to dismantle or disrupt at least 40% of identified organised crime groups as a result of police or multi agency activity.

YTD Oct 2010	2009/2010	2010/2011	Target 40% disruptions against identified
Number of OCGs identified and mapped	39	6	
Number of OCGs disrupted or partially disrupted through Crime OCU activity	31	11	
Number of OCGs subject to tactical activity	85	73	October 183%

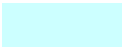


Force Target

20%
18%
16%
14%
12%
10%
8%
6%
4%
2%
0%

Detection Rate





Force Target

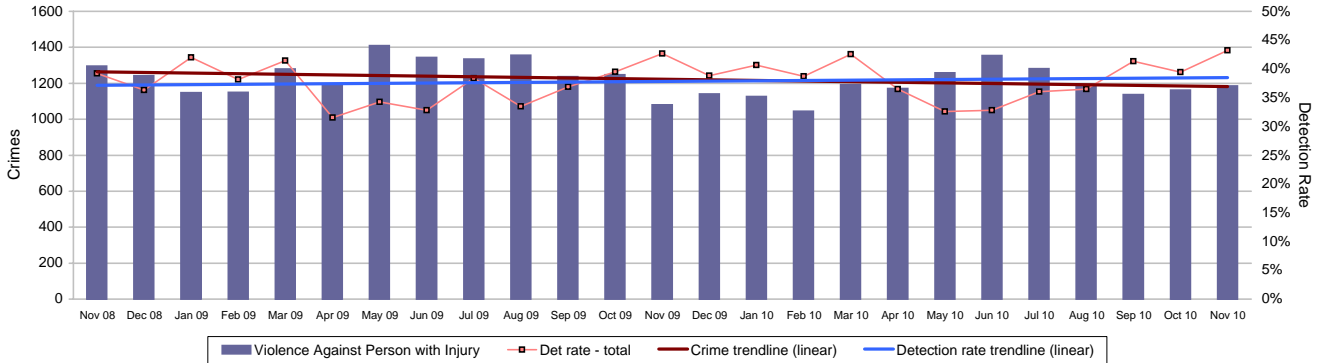
Force target areas for protecting our communities

	Target	Actual	Central	Isle of Wight	North & East	Portsmouth	Southampton	Western
Reduction of VAP with injury	9581	9745	1993	881	1510	1783	2164	1414
	OCU specific targets		1946	655	1579	1712	2230	1459
Reduction in dwelling burglary	3570	3349	552	200	580	630	898	489
	OCU specific targets		701	171	751	657	679	612

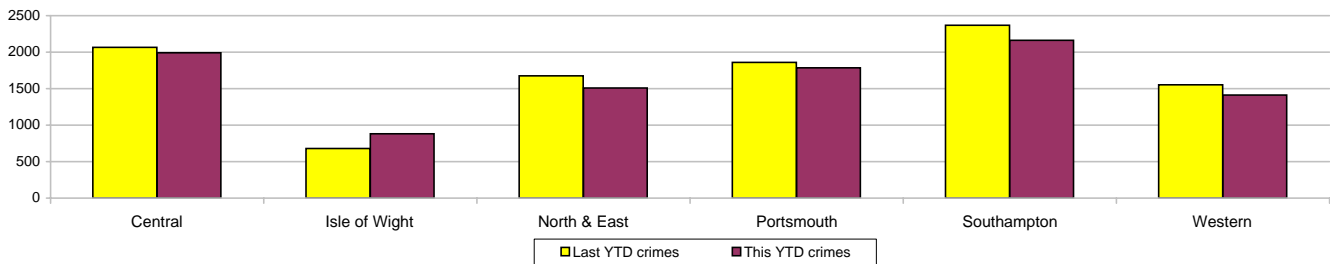
Violence against the person (VAP) with injury

VAP with injury crimsec codes 1, 2, 4.1-4.4, 4.6-4.10, 5A, 5B, 5C, 8F, 8G, 8H, 8J, 8K and 37.1

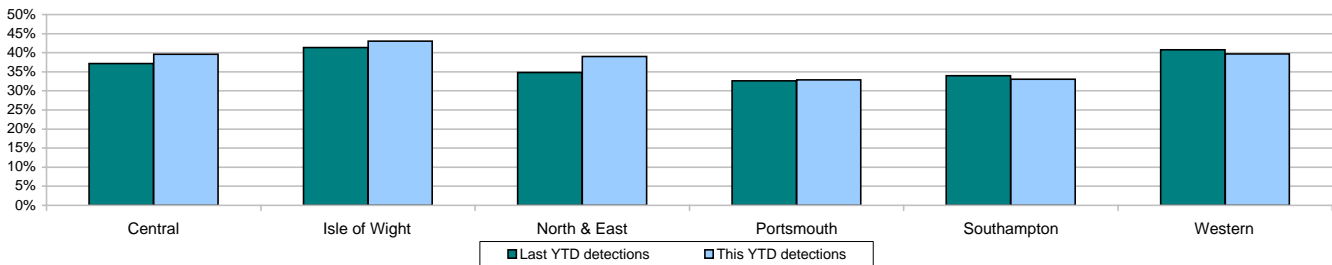
Force Target



Crimes	Central	Isle of Wight	North & East	Portsmouth	Southampton	Western	Force
YTD Crimes	1993	881	1510	1783	2164	1414	9745
YTD Target	1946	655	1579	1712	2230	1459	9581
YTD 09/10 Crimes	2066	682	1676	1858	2370	1551	10203
This month	232	90	181	232	280	170	1185
% change from 09/10	-3.53%	29.18%	-9.90%	-4.04%	-8.69%	-8.83%	-4.49%
MSG position	14 of 15	14 of 15	6 of 15	14 of 15	14 of 15	8 of 15	7 of 8
MSG actual	3.864	2.476	1.13	3.22	3.255	1.27	1.883
MSG average	3.045	1.674	1.184	2.134	2.337	1.236	1.465



Detections	Central	Isle of Wight	North & East	Portsmouth	Southampton	Western	Force
YTD Detection Rate	39.59%	43.02%	39.01%	32.92%	33.04%	39.67%	37.15%
This month	43.97%	67.78%	37.57%	30.60%	43.21%	52.35%	43.21%
YTD 09/10 Detections	37.12%	41.35%	34.79%	32.67%	33.97%	40.81%	36.04%
MSG position	11 of 15	7 of 15	11 of 15	10 of 15	11 of 15	10 of 15	6 of 8
MSG actual	38.74%	42.95%	40.15%	36.08%	33.62%	40.57%	37.92%
MSG average	41.42%	43.38%	42.40%	37.75%	39.23%	41.82%	41.43%

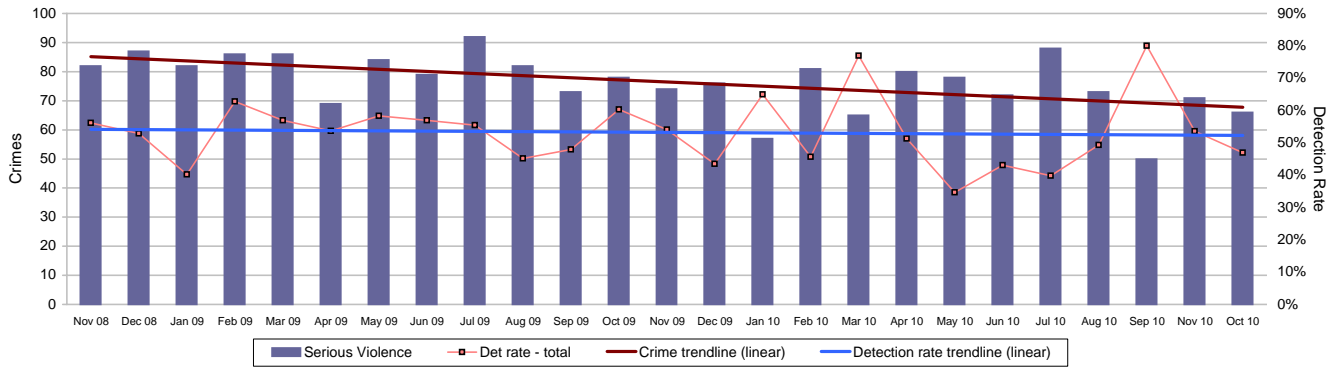


Force target areas for protecting our communities

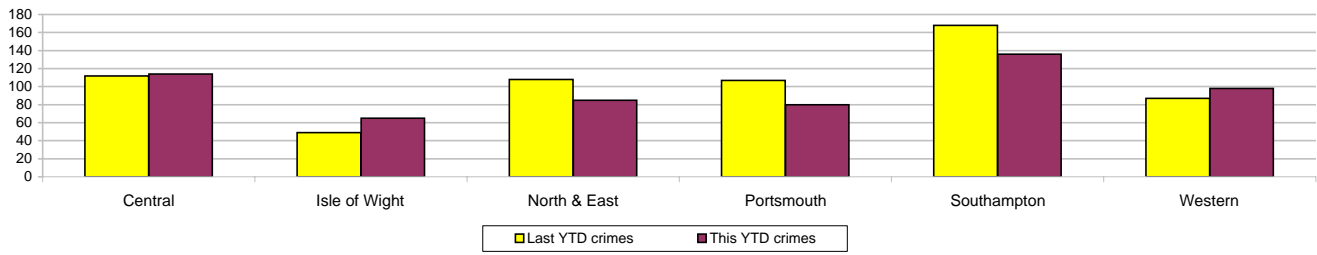
Serious violent crime

APACS 5.1

Serious violent crime consists of crimsec codes 1, 2, 4.1-4.4, 4.6, 4.8, 5A, 5B, 5C, 8F, 8H and 37.1

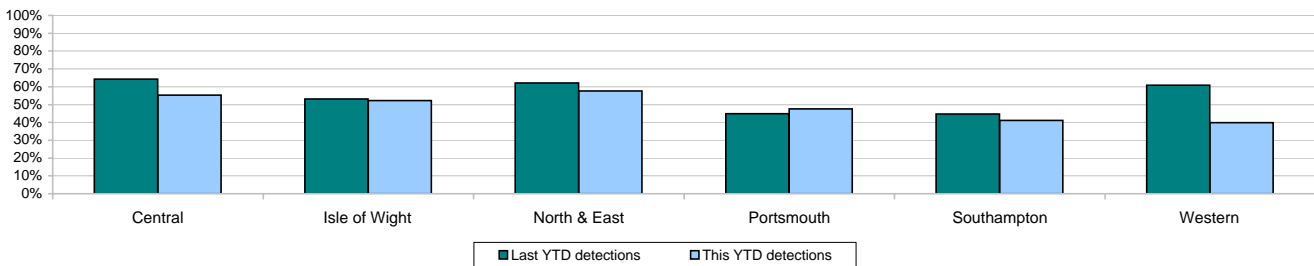


Crimes	Central	Isle of Wight	North & East	Portsmouth	Southampton	Western	Force
YTD Crimes	114	65	85	80	136	98	578
YTD 09/10 Crimes	112	49	108	107	168	87	631
This month	18	6	9	8	21	9	71
% change from 09/10	1.79%	32.65%	-21.30%	-25.23%	-19.05%	12.64%	-8.40%
MSG position	8 of 15	14 of 15	3 of 15	4 of 15	6 of 15	10 of 15	6 of 8
MSG actual	0.075	0.200	0.053	0.176	0.196	0.081	0.107
MSG average	0.091	0.131	0.078	0.22	0.229	0.075	0.108



Detections	Central	Isle of Wight	North & East	Portsmouth	Southampton	Western	Force
YTD Detection Rate	55.26%	52.31%	57.65%	47.50%	41.18%	39.80%	48.27%
This month	16.67%	116.67%	77.78%	62.50%	57.14%	44.44%	53.52%
YTD 09/10 Detections	64.29%	53.06%	62.04%	44.86%	44.64%	60.92%	54.04%
MSG position	5 of 15	10 of 15	11 of 15	9 of 15	9 of 15	14 of 15	4 of 8
MSG actual	63.33%	47.06%	53.57%	45.00%	45.36%	46.00%	50.06%
MSG average	60.22%	53.90%	57.15%	45.66%	48.09%	62.66%	49.70%

Note: Detections refer to Sanction Detections ONLY

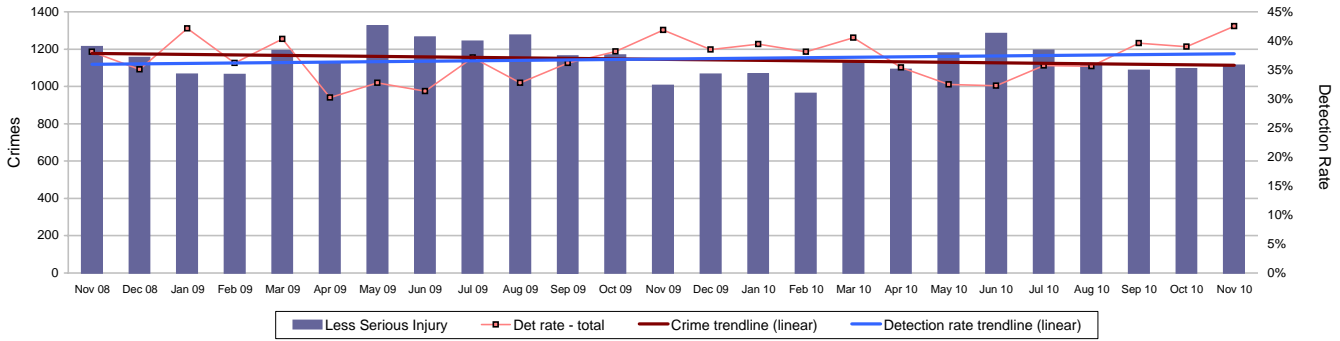


Force target areas for protecting our communities

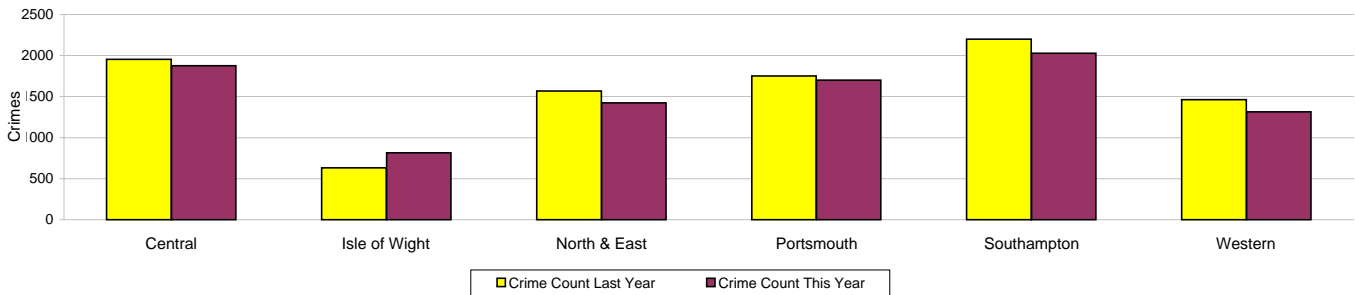
Assault with less serious injury

APACS 5.3

Assault with less serious injury consists of crimsec codes 8G and 8J

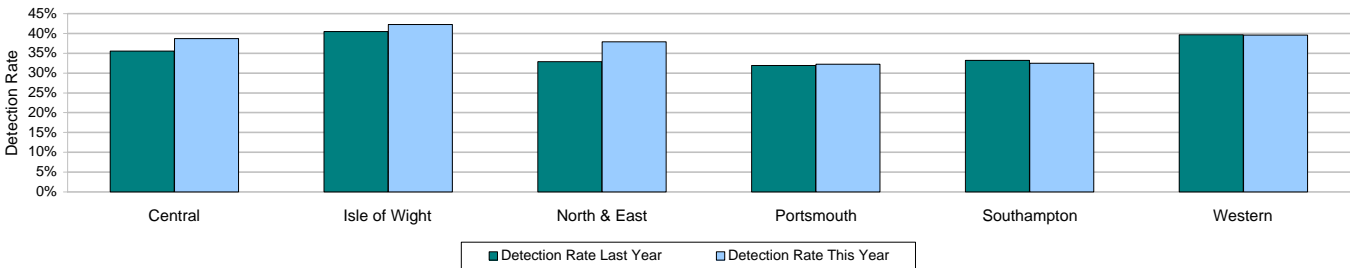


Crimes	Central	Isle of Wight	North & East	Portsmouth	Southampton	Western	Force
YTD Crimes	1877	816	1425	1702	2028	1315	9163
YTD 09/10 Crimes	1953	633	1568	1751	2201	1463	9569
This month	214	84	172	224	259	160	1113
% change from 09/10	-3.89%	28.91%	-9.12%	-2.80%	-7.86%	-10.12%	-4.24%
MSG position	14 of 15	14 of 15	6 of 15	14 of 15	14 of 15	8 of 15	8 of 8
MSG actual	1.593	2.276	1.077	3.04	3.058	1.19	1.775
MSG average	1.197	1.518	1.105	1.913	2.106	1.161	1.356



Detections	Central	Isle of Wight	North & East	Portsmouth	Southampton	Western	Force
YTD Detection Rate	38.68%	42.28%	37.89%	32.26%	32.50%	39.62%	36.45%
This month	46.26%	64.29%	35.47%	29.46%	42.08%	52.50%	42.50%
YTD 09/10 Detections	35.59%	40.44%	32.91%	31.92%	33.17%	39.64%	34.86%
MSG position	12 of 15	7 of 15	11 of 15	10 of 15	11 of 15	10 of 15	6 of 8
MSG actual	37.42%	42.61%	39.25%	35.62%	32.86%	40.17%	37.15%
MSG average	40.33%	42.53%	41.53%	36.90%	38.34%	40.65%	40.87%

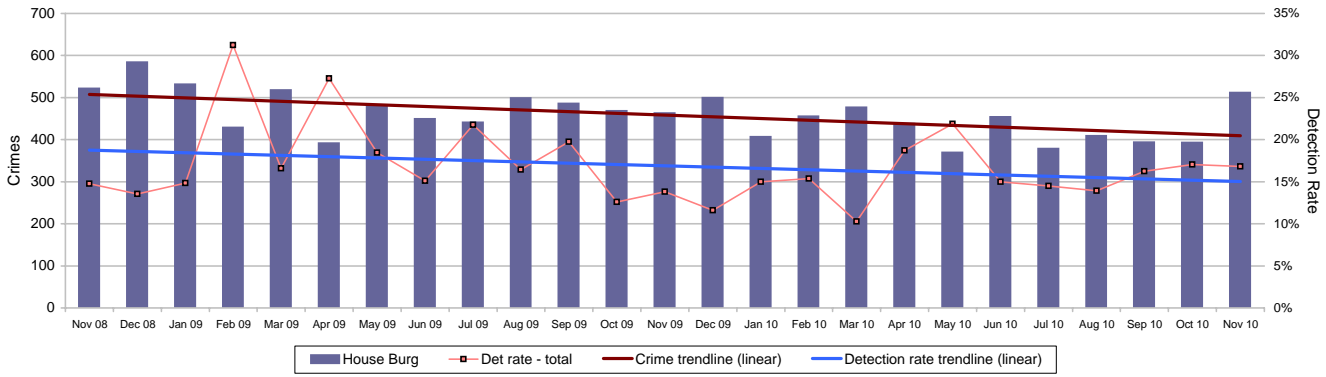
Note: Detections refer to Sanction Detections ONLY



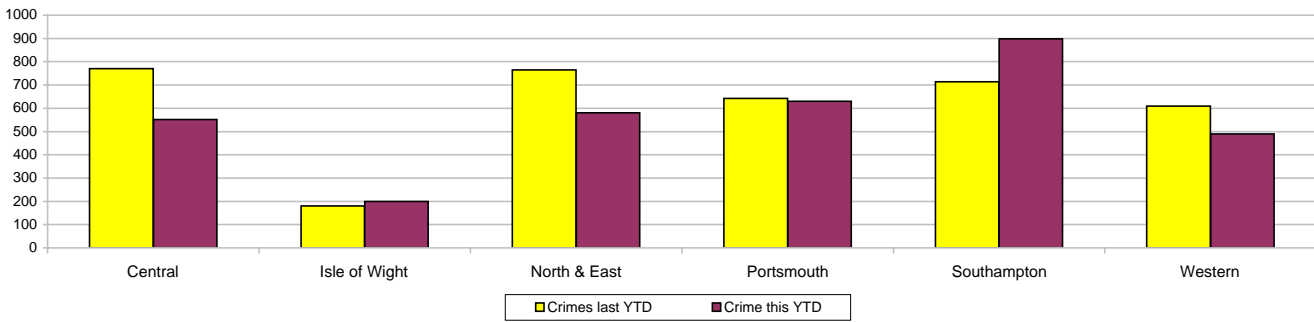
Force target areas for protecting our communities

Reduction in Dwelling Burglary

Force Target

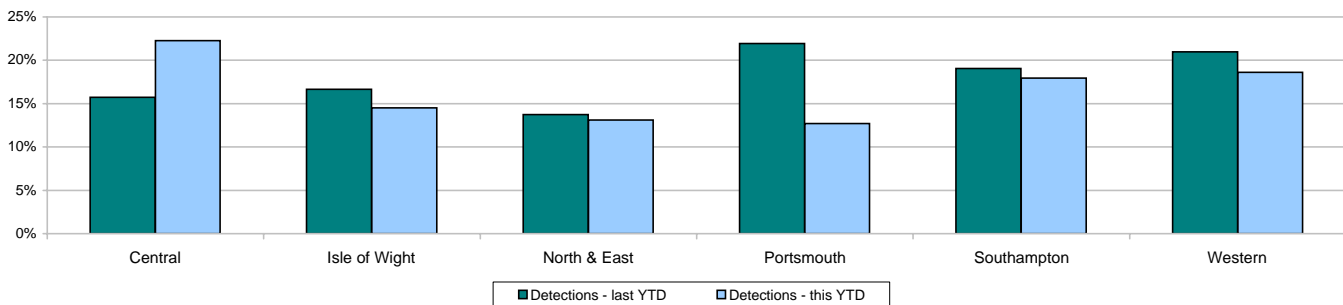


Crimes	Central	Isle of Wight	North & East	Portsmouth	Southampton	Western	Force
YTD Crimes	552	200	580	630	898	489	3349
YTD Target	701	171	751	657	679	612	3570
YTD 09/10 Crimes	770	180	765	643	714	610	3682
This month	58	40	105	67	156	86	512
% change from 09/10	-28.31%	11.11%	-24.18%	-2.02%	25.77%	-19.84%	-9.04%
MSG position	4 of 15	3 of 15	3 of 15	2 of 15	7 of 15	2 of 15	2 of 8
MSG actual	1.126	1.136	1.142	3.876	3.44	0.989	1.526
MSG average	1.709	1.563	1.688	2.309	3.494	1.538	2.196



Detections	Central	Isle of Wight	North & East	Portsmouth	Southampton	Western	Force
YTD Detection Rate	22.28%	14.50%	13.10%	12.70%	17.93%	18.61%	16.72%
This month	22.41%	5.00%	14.29%	14.93%	23.08%	11.63%	16.80%
YTD 09/10 Detections	15.71%	16.67%	13.73%	21.93%	19.05%	20.98%	17.95%
MSG position	9 of 15	9 of 15	14 of 15	8 of 15	10 of 15	5 of 15	4 of 8
MSG actual	16.67%	18.11%	10.10%	14.75%	15.90%	18.32%	14.86%
MSG average	17.45%	19.48%	17.18%	13.08%	18.33%	17.44%	16.35%

Note: Detections refer to Sanction Detections ONLY



Force target areas for making the most of our resources

Force target areas for equipping our staff to deliver

	Target	Actual	Central	Isle of Wight	North & East	Portsmouth	Southampton	Western
BME recruitment	5% of all recruits	5.3%	This is a Force measure					

	Target	Actual	Central	Isle of Wight	North & East	Portsmouth	Southampton	Western
Staff confidence in the organisation	To be agreed		To be agreed					

Minority ethnic recruitment

Force Target

The 2010/11 target is based on all police staff and police officer recruits. Data published previously has related only to police officer recruitment.

Target = 5%	All recruits	Minority ethnic recruits	%
YTD May 2010	207	11	5.3%

Minority ethnic police officer recruitment

APACS 3.1

	All recruits	Minority ethnic recruits	%
YTD May 2010	59	6	10.2%

Minority ethnic police staff recruitment

	All recruits	Minority ethnic recruits	%
YTD May 2010	148	5	3.4%

Female officer representation

APACS 3.2

	Male strength	Female strength	%
YTD May 2010	2596.8	1024.4	28.29%

Staff confidence in the organisation

Force Target

This is a new target area for 2010/11. This will be based up on the results of the internal staff survey. At the current time it is not possible to set a specific target as no baseline data is available. A target will be established once data from the internal staff survey becomes available

Monitoring information for making the most of our resources

Budget spend

The actual spend to the end of November 2010 was £163.440m. The projected spend for the force at the end of the financial year is £304.402m, which will be an underspend of £7.692m against the agreed budget of £312.094m.

	Target	Actual
Budget spend	58%	52%
Efficiency savings 2008-11(£m)	33	36.4

	Central	Isle of Wight	North & East	Portsmouth	Southampton	Western	Crime	Operations
Budget spend	57%	58%	57%	56%	56%	56%	53%	55%
Efficiency savings 2008-11(£m)	This is a Force measure							

Projected over/(under)spend 2010/2011	Central	Isle of Wight	North & East	Portsmouth	Southampton	Western	Crime	Operations
	£-539,000	£66,000	£-59,000	£-510,000	£-503,000	£-497,000	£-1,798,000	£-222,000

Efficiency savings

The Authority needs to maximise efficiency gains both due to its budgetary constraints and in order to achieve value for money. In addition, there is a national Home Office target to deliver recurring efficiency or productivity gains equivalent to 10.3% of the 2007/08 'Gross Revenue Expenditure' over three years, by the end of 2010/11. Each Authority must set its own challenging target. The Authority and Force are currently working to a target equivalent to the national target, which equates to £33m over the 3 years (an average of £11m per annum). The actual achieved as at 31/03/10 was £36.4m. Thus the 3 year target has been achieved within 2 years. However, further efficiencies are still required as the Authority has had £3.2m of grants removed in 2010/11 and is likely to have further grant reductions and financial challenges in 2011/12. The current value of efficiencies included in the register is: £40.974m

Electricity & Gas Consumption (Kwh)

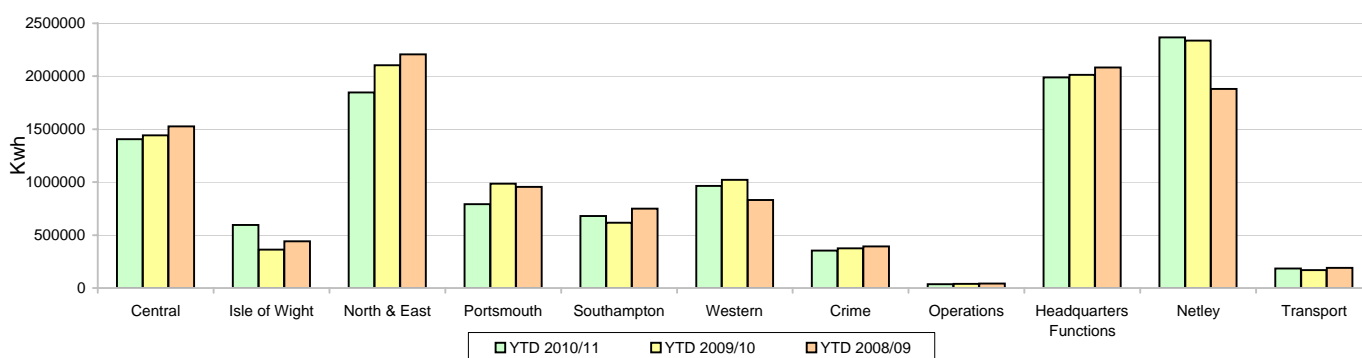
YTD	Central	Isle of Wight	North & East	Portsmouth	Southampton	Western	Crime	Operations	Headquarters Functions	Netley	Transport
2010/11	1404865.72	594362.99	1848031.09	792721.98	679343.46	965400.90	353186.03	35320.00	1989860.08	2368114.72	184904.55
2009/10	1441575.49	363175.63	2104170.55	984417.75	617657.14	1022842.14	374084.00	39100.00	2013570.89	2336501.62	170471.44
2008/09	1526241.38	442036.02	2207303.88	955253.10	750969.83	831900.00	392998.48	41017.60	2082837.02	1881299.20	191794.38

Percentage change from baseline year 2008/09

YTD	Central	Isle of Wight	North & East	Portsmouth	Southampton	Western*	Crime	Operations	Headquarters Functions	Netley*	Transport
2010/11	-7.95	34.46	-16.28	-17.01	-9.54	-19.34	-10.13	-13.89	-4.46	-5.31	-3.59
2009/10	-5.55	-17.84	-4.67	3.05	-17.75	-6.09	-4.81	-4.68	-3.33	-4.66	-11.12

*Gas excluded due to issues with baseline year data

Electricity and gas consumption yearly comparison



Monitoring information for making the most of our resources

Specials scorecard

Special Constable Balanced Scorecard

	Central	Isle of Wight	North & East	Portsmouth	Southampton	Western	RPU	CS/CQ	Force	Average
Total number of officers	93	21	89	74	62	79	8	4	430	n/a
Total number of operational hours	1613	388	1807	493	769	942	17	16	6045	n/a
Number of operational hours per 1000 population	2.8	2.8	4.1	2.6	4.0	2.6	N/A	N/A	2.7	3
Average number of operational hours per officer	12.4	18.5	20.3	6.7	12.4	11.9	2.1	4.0	10.7	11
Leavers joining regular service or transferring to another Force	0	0	0	3	0	1	0	0	4	1
Leavers not joining regular service or transferring to another Force	2	0	1	0	1	6	0	0	10	2
Number of officers completing at least 16 hours of duty during the month	48	12	49	18	28	40	3	4	202	n/a

Gender	Central	Isle of Wight	North & East	Portsmouth	Southampton	Western	RPU	CS/CQ	Force
Male	59	15	70	48	41	60	8	3	304
Female	34	6	19	26	21	19	0	1	126

Ethnicity	Central	Isle of Wight	North & East	Portsmouth	Southampton	Western	RPU	CS/CQ	Force
White	92	21	86	73	59	79	8	4	422
Mixed	1	0	0	0	0	0	0	0	1
Black or black British	0	0	2	0	2	0	0	0	4
Asian or asian British	0	0	1	1	0	0	0	0	2
Chinese or other	0	0	0	0	1	0	0	0	1
Not stated	0	0	0	0	0	0	0	0	0

Age	Central	Isle of Wight	North & East	Portsmouth	Southampton	Western	RPU	CS/CQ	Force
25 and under	40	5	27	47	20	35	0	0	174
26 to 40	33	8	36	19	36	28	3	1	164
41 to 55	17	5	22	7	5	14	4	1	75
Over 55	4	3	4	1	0	2	1	2	17

Length of service	Central	Isle of Wight	North & East	Portsmouth	Southampton	Western	RPU	CS/CQ	Force
up to 1 year	31	7	25	30	18	22	0	0	133
1yr to 5 years	38	9	34	40	41	38	2	0	202
5 to 10 years	10	1	12	2	3	7	1	0	36
10 to 15 years	8	2	11	2	0	3	3	2	31
15 to 20 years	2	1	6	0	0	8	2	0	19
20 to 25 years	2	0	0	0	0	0	0	0	2
25 years and over	2	1	1	0	0	1	0	2	7
Number of joiners	2	1	0	4	1	6	N/A	N/A	14

Monitoring information for making the most of our resources

Specialist support - 7 OCU

Assistance given with interviewing, house search, statement taking and investigatory advice

7 OCU	Central	Isle of Wight	North & East	Portsmouth	Southampton	Western	Force
July 2010	1	0	1	0	6	2	10
August 2010	0	0	1	3	1	1	6
Sept 2010	0	1	0	3	1	1	6
Oct 2010	0	0	0	1	5	4	10
Nov 2010	3	1	1	1	3	4	13
Total	4	2	3	8	16	12	45

Note: For Nov these include 2 x misper cases, 2 x suspicious Death, conspiracy to murder, violent disorder, kidnap and multiple thefts

Specialist support - 8 OCU

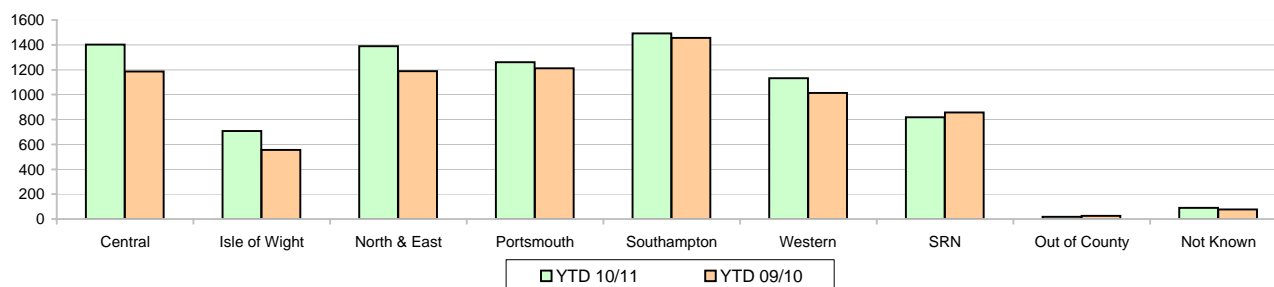
Percentage of Grade 1 incidents at which 8 OCU units were On Scene

	Central	Isle of Wight	North & East	Portsmouth	Southampton	Western	SRN	Out of County	Not Known	TOTAL
YTD 10/11	33.9%	42.8%	34.7%	32.3%	31.1%	33.2%	77.6%	51.4%	29.2%	35.7%
YTD 09/10	34.2%	50.2%	37.2%	36.9%	36.9%	34.3%	79.1%	69.2%	28.9%	39.1%
% change	-0.7%	-14.7%	-6.6%	-12.3%	-15.7%	-3.2%	-2.0%	-25.7%	1.0%	-8.8%
Nov-10	33.5%	32.9%	37.6%	32.8%	34.8%	33.0%	80.6%	83.3%	30.3%	37.0%
Nov-09	37.6%	43.6%	37.8%	34.9%	37.2%	34.4%	83.4%	83.3%	47.4%	40.0%
% change	-10.9%	-24.4%	-0.5%	-5.9%	-6.5%	-4.1%	-3.5%	0.0%	-36.0%	-7.6%

Total number of Grade 1 Incidents Attended by 8 OCU Units

	Central	Isle of Wight	North & East	Portsmouth	Southampton	Western	SRN	Out of County	Not Known	TOTAL
YTD 10/11	1402	707	1390	1260	1492	1131	819	18	89	8308
YTD 09/10	1186	556	1189	1211	1456	1014	857	27	78	7574
% change	18.2%	27.2%	16.9%	4.0%	2.5%	11.5%	-4.4%	-33.3%	14.1%	9.7%
Nov-10	155	53	179	127	195	129	116	5	10	969
Nov-09	156	61	150	142	171	127	121	5	18	951
% change	-0.6%	-13.1%	19.3%	-10.6%	14.0%	1.6%	-4.1%	0.0%	-44.4%	1.9%

Incidents attended - year to date comparison



Basic overtime costs

Due to payroll running one month and 15 days in arrears, this report represents overtime spend to 16/10/2010 and therefore represents 54%

	Central	Isle of Wight	North & East	Portsmouth	Southampton	Western	Crime	Operations	CWUN
PC, DC, PS, DS Establishment	559	202	519	381	454	486	379	365	29
Strength + or - establishment at 30/06/2010	-11	-1	-3	-6	-3	-5	-40	-12	-2
OCU budgeted police basic pay	£ 20,246,300	£ 7,594,600	£ 18,690,700	£ 13,765,800	£ 16,325,400	£ 17,418,700	£ 13,662,600	£ 13,923,400	£ 1,517,100
OCU budgeted police regular overtime from ZBB	£ 430,300	£ 178,600	£ 572,400	£ 258,000	£ 505,000	£ 504,200	£ 482,500	£ 345,400	£ 90,000
Officer OT as % of Basic Pay	2.13%	2.35%	3.06%	1.87%	3.09%	2.89%	3.53%	2.48%	5.93%
Budgeted OT / officer	£770	£884	£1,103	£677	£1,113	£1,039	£1,274	£946	£3,103
Spend to date	£188,349	£103,556	£234,296	£103,224	£242,710	£182,567	£186,900	£154,555	£40,827
Overtime spend per officer YTD	£ 336.99	£ 512.65	£ 451.48	£ 270.91	£ 534.84	£ 376.04	£ 493.67	£ 423.44	£ 1,407.81
% of overtime budgeted overtime spent YTD	43.77%	57.98%	40.93%	40.01%	48.06%	36.21%	38.74%	44.75%	45.36%

Bank holiday

	Central	Isle of Wight	North & East	Portsmouth	Southampton	Western	Crime	Operations	CWUN
OCU budgeted police BH overtime	£ 296,100	£ 106,400	£ 251,600	£ 184,800	£ 183,600	£ 203,400	£ 109,100	£ 288,900	£ 22,400
% OCU budgeted police BH spent YTD	52%	55%	50%	51%	55%	58%	37%	45%	60%
% bank holidays elapsed YTD	45%	45%	45%	45%	45%	45%	45%	45%	45%
Projected year underspend / (- = overspend)	-£ 41,096	-£ 21,390	-£ 26,538	-£ 22,242	-£ 39,287	-£ 55,227	£ 20,104	£ 4,676	-£ 7,004

Current overspend

£188,006

This covers 5 (of the 11) bank holidays year to date

Projected year underspend / overspend based on ytd % variance applied to annual budget. Excludes all events and agreements. (- = overspend)

Monitoring information for making the most of our resources

Overdue PDRs

Year to date - October

	Police Officers			Police Staff			PCSOs		
	Headcount	Overdue PDRs	%	Headcount	Overdue PDRs	%	Headcount	Overdue PDRs	%
Central OCU	598	51	9%	169	25	15%	75	1	1%
Isle of Wight OCU	221	11	5%	75	6	8%	29	0	0%
North and East OCU	558	81	15%	136	24	18%	68	8	12%
Portsmouth OCU	407	35	9%	133	12	9%	50	4	8%
Southampton OCU	492	24	5%	149	11	7%	59	4	7%
Western OCU	522	28	5%	138	8	6%	65	3	5%
Crime OCU	380	38	10%	318	35	11%	0	0	-
Operations OCU	377	23	6%	126	15	12%	0	0	-
Chief Constables portfolio	7	0	0%	3	3	100%	0	0	-
DCCs portfolio	29	5	17%	301	103	34%	0	0	-
ACC Crime and CJ portfolio	11	3	27%	319	70	22%	0	0	-
ACC HR and Ops portfolio	63	13	21%	159	40	25%	0	0	-
ACC TO portfolio	49	10	20%	439	36	8%	0	0	-
Director of Finance portfolio	0	0	-	149	29	19%	0	0	-
Force Total	3714	322	9%	2614	417	16%	346	20	6%

Note: Chief Superintendents and above are counted against the relevant ACPO Portfolio holder rather than their OCU or Dept.

Sickness data

APACS 13.1

Year to date - October

APACS 13.2

	Police Officers			Police Staff			PCSOs		
	Average Headcount	Duty Days Lost	Average days sickness per officer	Average Headcount	Duty Days Lost	Average days sickness per staff member	Average Headcount	Duty Days Lost	Average days sickness per PCSO
Central OCU	606.5	2549	4.20	172	917	5.35	77.5	341	4.40
Isle of Wight OCU	222	1220	5.50	76	300	3.97	28.5	56	1.96
North and East OCU	566.5	2334	4.12	143	1078	7.56	68	229	3.37
Portsmouth OCU	409.5	1403	3.43	132	362	2.74	50	249	4.98
Southampton OCU	494	2280	4.62	154	723	4.71	59	307	5.20
Western OCU	518.5	2534	4.89	140	816	5.85	65.5	264	4.03
Crime OCU	390	1587	4.07	319	1133	3.55	0	0	-
Operations OCU	380.5	1562	4.11	129	420	3.26	0	0	-
Chief Constables portfolio	2.5	0	0.00	2	70	35.00	0	0	-
DCCs portfolio	37	75	2.03	312	671	2.15	0	0	-
ACC Crime and CJ portfolio	11.5	12	1.04	327	1239	3.79	0	0	-
ACC HR and Ops portfolio	62	283	4.56	154	426	2.77	0	0	-
ACC TO portfolio	44	149	3.39	419	3049	7.28	0	0	-
Director of Finance portfolio	0	0	-	150	446	2.97	0	0	-
Force Total	3744.5	15988	4.27	2626	11650	4.44	348.5	1446	4.15

Monitoring information for equipping our team to deliver

Financial awareness training

Financial awareness training will be undertaken for budget holders with the aim of ensuring a minimum of 95% of budget holders are trained by the end of the financial year.

	Full Year Apr 10 - Mar 11		Year to Date (November 10)	
	Courses Planned	Numbers to be trained	Courses Held	Numbers Trained
Financial Awareness	4	40	3	26

Number of courses currently subject to review

Preparing for frontline supervision

	Full Year Apr 10 - Mar 11		Year to Date (November 10)	
	Courses Planned	Numbers to be trained	Courses Held	Numbers Trained
Sergeants Operational Activities	7	70	3	29
Inspectors Statutory Responsibilities	4	56	2	18
First Line Manager - Leadership Part 1	7	112	4	60
First Line Manager - Leadership Part 2	7	112	5	68
First Line Manager - Action Learning Sets	24	144	9	86

Exception report for catching criminals and managing offenders

Drug seizures information

	Central	Isle of Wight	North & East	Portsmouth	Southampton	Western	Force
YTD Sept 2010	445	885	477	403	502	301	3013
YTD Sept 2009	635	1011	441	350	548	306	3291
% change from 09/10	-29.9%	-12.5%	8.2%	15.1%	-8.4%	-1.6%	-8.4%