

Performance Profile May 2009



Summary

2009/10 Reporting Year

This document contains a strategic overview of the Constabulary's performance. It has a variety of performance measures within it. The format of the profile has been aligned to the Policing Priorities identified by the Control Strategy. It provides information on our performance against Force targets, some of the APACS Statutory Performance Indicators (SPI) and the Policing Pledge. It also aims to provide supplementary information to assist in understanding reasons behind the performance in these areas. It has been designed as a headline document that will enable our customers, both internally and externally to easily assess performance information for key domains.

At the front of the document there are several matrices that reflect our performance against our targets firstly year to date and secondly relevant for that particular month.

Performance in key areas is then explored in more depth with an indication of where each measure has originated - for example, APACS Statutory Performance Indicator (SPI) or a Force Control Strategy (FCS) measure.

Where applicable, within the document, MSG (Most Similar Group) data is published along with the crime and detection data. MSGs are calculated by the Home Office based on a number of socio-demographic & geographic variables which are strongly linked to crime/incident levels and the fear of crime. These groups provide a benchmark for comparison of crime and detection rates. Below the applicable crime tables there are three rows relating to MSG data. The first provides the MSG position for the OCU/Force for that crime type. The second displays OCU Actual, this is the number of offences per 1,000 population. The third row shows the MSG Average which is the total number of offences per 1,000 population divided by the number within the MSG. The same three rows are provided in relation to detection data, where data is provided in % figures rather than per 1,000 population.

This document is then taken forward by key stakeholders within the organisation to the Force Performance Review Group, where it is used to highlight areas of good performance and those for development

This is an evolving document and as such, the content may alter over time and any feedback would be welcomed by the Performance Review Team.

Index

Page	Index		
Year to date and Monthly performance matrices			
4-6	including notes on matrices terminology		
Policing Pledge Scorecard			
7	Policing Pledge Scorecard		
Providing an excellent service			
8	British Crime Survey confidence data	SPI 2.2	FCS
8	Local confidence survey data		
8	British Crime Survey supplementary data		
8	Overall satisfaction	SPI 1.1	FCS
8	Being kept informed		FCS
9	Comparative satisfaction of minority ethnic groups	SPI 1.2	
9	Satisfaction of victims of racist incidents	SPI 1.3	
9	MSG user satisfaction		
9-10	Responding to victims of crime (inc victim code compliance data)		
10	Letters of appreciation, reports of incivility, expression of dissatisfaction		
11	Responding to public contact (inc call handling data)		
An active presence in every neighbourhood			
12	Rowdy and nuisance behaviour		FCS
12	Vehicle nuisance/inappropriate vehicle use		FCS
13	Neighbourhood Policing Teams		
14	Criminal damage		FCS
Catching criminals and managing offenders			
15	All crime and sanction detections		FCS
16	Serious violent crime, sanction detections and OBTJ rate	SPI 5.1&6.1	FCS
17	Assault with less serious injury	SPI 5.3	FCS
18	Serious acquisitive crime, sanction detections and OBTJ rate	SPI 5.2&6.2	FCS
19	Serious acquisitive crime breakdown		
20	Gun and knife crime	SPI 5.5&5.6	
20	Serious sexual crime OBTJ rate	SPI 6.4	
20	Murder offences incl domestic murders	SPI 5.4	FCS
20	FIU1 submission levels		FCS
20	PPO convictions	SPI 10.1	FCS
20	Class A drugs sanction detections		FCS
20	Drug seizures		
20	Organised Crime Groups		
Protecting our communities			
21	Domestic violence and abuse		FCS
21	Repeat incidents of domestic violence cases reviewed at MARAC	SPI 14.1	
21	Hate crime detection rate		FCS
22	Road traffic casualties	SPI 9.1	
Making the most of our resources			
23	Police officer sickness	SPI 13.1	FCS
24	Police staff sickness	SPI 13.2	
25	Overdue PDRs		
26	NCRS compliance - peer audits only		FCS
26	Budget spend	SPI 12.1	FCS
26	Efficiency savings		FCS
27	SO support to TO		
Equipping our team to deliver			
28	Financial awareness training		FCS
28	Preparing for frontline supervision		
28	Mobile data		
28	Minority ethnic officer recruitment	SPI 3.1	
28	Female officer representation	SPI 3.2	
Restricted data			

FCS = Force Control Strategy PRT = Performance Review Team SPI = Statutory Performance Indicator

Year to date performance targets matrix

	Target	Actual	Central	Isle of Wight	North & East	Portsmouth	Southampton	Western
Providing an excellent service								
Confidence in local police	>51.3%	47.8%	This is a Force measure					
Overall satisfaction (data for rolling 12 months)	>65.0%	66.0%	66.0%	74.0%	64.0%	66.0%	62.0%	66.0%
An active presence in every neighbourhood								
Rowdy & nuisance behaviour	12552	12880	2509	946	2268	2091	3040	2026
	OCU specific targets		2323	894	2422	1913	2955	2045
Vehicle nuisance / inappropriate vehicle use	2502	2018	507	149	425	169	389	379
	OCU specific targets		582	167	509	216	473	556
Reduce criminal damage	5721	6134	1384	405	1219	808	1253	1065
	OCU specific targets		1261	419	1099	776	1109	1057
Catching criminals & managing offenders								
All crime	27163	26809	5829	1540	5065	4336	5380	4659
	OCU specific targets		5535	1771	5143	4234	5697	4783
All crime SD	>25%	23.5%	22.4%	26.8%	24.8%	24.6%	22.5%	22.5%
	OCU specific targets		25.0%	30.0%	25.5%	25.5%	25.0%	25.0%
Serious violent crime	152	170	23	12	22	24	59	30
	OCU specific targets		29	10	24	30	39	19
Serious violent crime SD	>50%	52.9%	73.9%	75.0%	77.3%	66.7%	23.7%	56.7%
	OCU specific targets		57.0%	60.0%	56.0%	41.0%	45.0%	50.0%
Assault with less serious injury	2305	2424	467	183	428	461	531	354
	OCU specific targets		485	162	409	333	543	373
Serious sexual offences (OBTJ)	Data being developed		This is a Force measure					
Serious acquisitive crime	3743	3339	682	142	633	602	621	659
	OCU specific targets		684	153	734	659	817	696
Serious acquisitive crime SD	>15%	13.1%	8.5%	17.6%	16.9%	19.4%	7.7%	12.6%
Class A drugs SD*	>67	44	5	1	12	3	1	16
	OCU specific targets		8.4	6.7	13.4	13.4	16.7	8.4
Organised crime group (OCG) - disruptions	>4	0	Owned by Crime OCU					

Year to date performance targets matrix

	Target	Actual	Central	Isle of Wight	North & East	Portsmouth	Southampton	Western
Protecting our communities								
Domestic crimes arrest rate	>80%	72.1%	69.3%	72.6%	68.9%	75.9%	73.9%	73.2%
Hate crime SD	>45%	43.9%	31.4%	71.4%	55.9%	44.0%	51.7%	21.4%
Road traffic casualties	<73	59	Owned by Operations OCU					
Making the most of our resources								
Police officer sickness	<1.25	1.21	1.11	1.06	0.87	1.36	1.05	1.84
Police staff sickness	<1.25	1.29	1.35	1.23	1.54	1.03	0.87	0.86
Budget spend	<8.3%	Data in June	Data will be available for the June profile					
Efficiency savings	>10m	Data in June	This is a Force measure					
Equipping our staff to deliver								
Financial awareness training			Data not suitable for matrix					
Preparing for frontline supervision			Data not suitable for matrix					
Mobile data			Data not suitable for matrix					

Force Total - targets achieved	7	7	10	9	7	7	9
---------------------------------------	----------	----------	-----------	----------	----------	----------	----------

Notes to be read in conjunction with matrices

- All citizen focus data
 - OBTJ
 - Road traffic casualties
 - Budget spend
 - Efficiency savings
 - SD
 - Sickness data
 - OCU specific targets
 - *Class A drugs detections
- Based on "completely or very satisfied"
 Offenders Brought To Justice - current data is to February 2009
 All data until 30 April 2009
 Data is always one month in arrears
 3 year target of £30m, notionally £10m per year
 Sanction detections
 Force Actual = total for ALL officers/police staff - including those not in OCU
 OCU specific targets are rounded to 2 decimal places; the actual figure may therefore seem the same but appear red due to this rounding
 TO OCU total may not add to Force total as OCUs 7 and 8 contribute

Monthly performance targets matrix

This matrix is based on monthly data compared to Force targets

	Target	Actual	Central	Isle of Wight	North & East	Portsmouth	Southampton	Western
An active presence in every neighbourhood								
Rowdy & nuisance	6379	6492	1292	472	1212	1048	1502	966
	OCU specific targets		1181	454	1231	972	1502	1039
Vehicle nuisance / inappropriate vehicle use	1272	1019	254	75	222	93	185	190
	OCU specific targets		296	85	258	110	240	283
Reduce criminal damage	2908	2959	656	178	593	402	619	511
	OCU specific targets		641	213	559	394	563	537
Catching criminals & managing offenders								
All crime	13804	13698	2953	736	2647	2268	2740	2354
	OCU specific targets		2813	900	2614	2152	2895	2431
All crime (SD)	25.0%	24.5%	25.6%	28.7%	25.1%	23.8%	23.3%	23.4%
	OCU specific targets		25.0%	30.0%	25.5%	25.5%	25.0%	25.0%
Serious violent crime	77	89	11	7	11	9	35	16
	OCU specific targets		15	5	12	15	20	9
Serious violent crime SD	>50%	55.1%	109.1%	57.1%	100.0%	66.7%	22.9%	50.0%
	OCU specific targets		57.0%	60.0%	56.0%	41.0%	45.0%	50.0%
Assault with less serious injury	1172	1319	255	82	241	254	293	194
	OCU specific targets		246	82	208	169	276	190
Serious acquisitive crime	1902	1699	322	70	334	332	310	331
	OCU specific targets		347	78	373	335	415	354
Serious acquisitive crime SD	>15%	12.2%	11.2%	18.6%	11.4%	13.3%	11.0%	12.7%
Serious sexual offences (OBTJ)	Data being	developed	This is a Force measure					
Class A drugs SD	>34	15	2	1	9	2	0	1
Protecting our communities								
Domestic crimes arrest rate	>80%	68.9%	65.9%	67.4%	63.7%	72.4%	74.7%	67.7%
Hate crime SD	>45%	52.8%	38.9%	100.0%	68.4%	43.5%	57.1%	40.0%
Making the most of our resources								
Police officer sickness	<0.625	0.61	0.61	0.64	0.54	0.56	0.35	0.95
Police staff sickness	<0.625	0.66	0.69	0.90	0.69	0.40	0.47	0.58
Force Total - targets achieved	6		6	7	8	6	6	7

Providing an excellent service

Hampshire Constabulary Policing Pledge Scorecard

Pledge	YTD 2009/2010
--------	------------------

Percentage of respondents tending to 'agree' or 'strongly agree' that: 'The police and local council are dealing with the anti-social behaviour and crime issues that matter in this area'	47.8%
--	-------

Pledge 1 - Treat people fairly with dignity and respect, ensuring they have fair access to our services

Percentage of respondents answering 'strongly agree' or 'tend to agree' when asked 'The police in this area treat everyone fairly regardless of who they are'.	66.1%
--	-------

Pledge 2 - Help promote our dedicated Safer Neighbourhoods teams to the local community, including where they are based and how to work with them

Measure under development - dip sampling of media/communications to be carried out

Pledge 3 - Ensure we are visible in our neighbourhoods at times when we will be most effective and when communities need us most. Safer Neighbourhoods teams will spend at least 80% of their time visibly working in neighbourhoods, tackling neighbourhood issues

%age with 1-2 years experience working in this SNT	19%
%age with 2-5 years experience working in this SNT	46%
Neighbourhood Team abstractions - OCU level see page 11	51%
Neighbourhood Team Vacancy Rate	1%

Pledge 4 - Respond to every message directed to every Safer Neighbourhoods team within 24 hours and, where necessary, provide a detailed response as soon as we can

Measure under development - dip sampling of media/communications to be carried out

Pledge 5 - Aim to answer 999 calls within 10 seconds, deploy to emergencies immediately and give an estimated time to provide assistance to callers as safely and quickly as possible, aiming to get to them within 15 minutes in urban areas and 20 minutes in rural areas

No. of 999 calls	23623
%age of 999 calls answered within 10 seconds	96.8%

Pledge 6 - Answer all non emergency calls promptly. If attendance is needed, agree with the caller an acceptable time to return

No of non emergency calls	67816
%age of non emergency calls answered within 10 seconds	90.0%
Scheduling pilot permanent reporting in progress	100%

Pledge 7 - Create opportunities to meet them at least once a month to agree or update neighbourhood priorities. Make use of various communication arrangements for meetings, street briefings, mobile police station visits and similar by keeping beat web pages up to date and providing an online postcode search to our communities so that they can be kept up to date

Measure under development - dip sampling of media/communications to be carried out

Pledge 8 - Provide monthly updates on what action we and our partners are taking to make neighbourhoods safer and how the force is performing

Regular neighbourhood performance data is published on the Internet	5 times a month
---	-----------------

Measure under development - other monitoring to be carried out

Pledge 9 - Agree with victims of crime how often they would like to be kept informed of progress in their case and for how long, and ensure that the right to be kept informed at least every month if they wish and for as long as is reasonable

Satisfaction of victims with respect to being kept informed (very / fairly satisfied)	55.0%
% where the victim has been updated on a monthly basis	90.0%
Compliance with victims contact as part of the Victims' Code	See profile

Pledge 10 - Acknowledge any dissatisfaction with the service brought to our attention within 24 hours of it being reported and ensure that appropriate steps are taken to resolve concerns

Reports of incivility	36
-----------------------	----

Providing an excellent service

British Crime Survey Confidence Data

SPI 2.2 Force Target

This data is updated by iQuanta approximately every quarter

Data up to and including year ending

December 2008	National Public Confidence Measure	
Avon & Somerset	42.1%	8
Bedfordshire	47.2%	5
Essex	49.0%	2
Hampshire	47.8%	4
Hertfordshire	50.9%	1
Kent	46.4%	6
Sussex	45.8%	7
Thames Valley	48.6%	3
MSG average	47.2%	

This data is based on 'The police and local council are dealing with the anti-social behaviour and crime issues that matter in this area'

The Home Office has set a target to achieve a 12% improvement by 2012 against the baseline of 47.3%

This year's required improvement is 4%

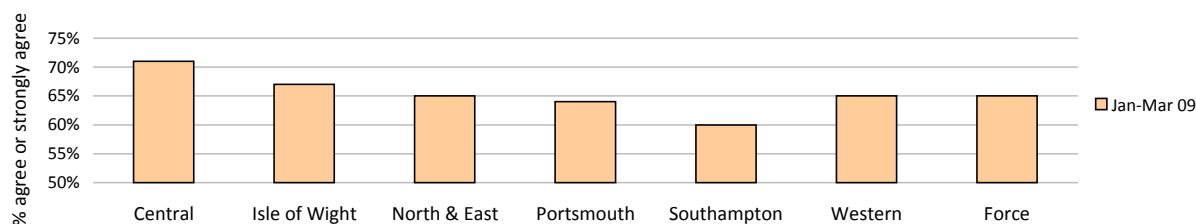
Local Confidence Survey Data

Figures relate to the percentage of respondents who agree or strongly agree with the question.

Hampshire's local surveys have a confidence level of +/-4%. This means that changes of less than 4% may not reflect a real change in performance.

The police and local council are dealing with the anti-social behaviour and crime issues that matter in this area

January - March 2009	Central	Isle of Wight	North & East	Portsmouth	Southampton	Western	Force	No. Surveys
	71%	67%	65%	64%	60%	65%	65%	3594



The police are dealing with the things that matter locally

In May, the Home Office advised that the question relating to this area should be rephrased. This will allow nationally comparable data, but required Hampshire to change the exact wording of the question asked. Data will be available on a quarterly basis from June 2009 onwards.

	Central	Isle of Wight	North & East	Portsmouth	Southampton	Western	Force	No. Surveys
	Data will be for the June 2009 Performance Profile							



British Crime Survey - supplementary information

This data is updated by iQuanta approximately every quarter

Data up to and including year ending

December 2008	Confidence in local police		Understanding community issues	
Avon & Somerset	47.0%		64.4%	
Bedfordshire	52.7%		61.2%	
Essex	55.0%		66.5%	
Hampshire	57.4%	2nd in MSG	67.1%	2nd in MSG
Hertfordshire	60.5%		69.0%	
Kent	49.6%		61.3%	
Sussex	55.2%		64.1%	
Thames Valley	54.9%		64.4%	
MSG	54.0%		64.8%	

Overall satisfaction (user satisfaction survey results)

SPI 1.1 Force Target

Rolling 12 months data relates to: Jun 08 - May 09; rolling 3 months data relates to Mar 09 - May 09

Overall satisfaction includes burglary, vehicle crime, violent crime and RTCs

Target 65%	Central	Isle of Wight	North & East	Portsmouth	Southampton	Western	Force	No. Surveys
Rolling 12 months	66%	74%	64%	66%	62%	66%	66%	6656
Rolling 3 months	65%	68%	63%	67%	62%	66%	65%	1900

Being kept informed (user satisfaction survey results)

Pledge Point 9

Rolling 12 months data relates to: Jun 08 - May 09; rolling 3 months data relates to Mar 09 - May 09

Being kept informed includes burglary, vehicle crime, violent crime and RTCs

	Central	Isle of Wight	North & East	Portsmouth	Southampton	Western	Total	No. Surveys
Rolling 12 months	55%	63%	53%	54%	54%	56%	55%	6439
Rolling 3 months	57%	62%	55%	55%	53%	58%	56%	1856

Providing an excellent service

Comparative satisfaction of minority ethnic groups

SPI 1.3

Data relates to interviews which took place Jun 08 - May 09

These figures are for overall satisfaction for burglary, vehicle crime, violent crime & RTCs; it excludes racist incidents

	Completely and very satisfied	Completely, very and fairly satisfied
White	66.4%	84.0%
Minority Ethnic	54.5%	78.0%

Satisfaction of victims of racist incidents

SPI 1.2

These figures relate to interviews which took place Jun 08 - May 09; these will be updated quarterly

Racist incident overall satisfaction = % completely or very satisfied

	Central	Isle of Wight	North & East	Portsmouth	Southampton	Western	Force
%	77%	N/A	53%	48%	62%	44%	56%
Number of surveys	17	0	32	21	29	18	117

MSG information for user satisfaction

iQuanta data for MSG for the 12 months up to December 2008

Vehicle crime

			Burglary		
Ease of contact	2/8	Hertfordshire	Ease of contact	2/8	Hertfordshire
Actions taken	4/8	Essex	Actions taken	2/8	Hampshire
Follow up	4/8	Hertfordshire	Follow up	1/8	Hampshire
Treatment	4/8	Hertfordshire	Treatment	3/8	Hertfordshire
OVERALL	5/8	Hertfordshire	OVERALL	3/8	Hertfordshire

Violent crime

			RTC		
Ease of contact	1/8	Hampshire	Ease of contact	1/8	Hampshire
Actions taken	5/8	Kent	Actions taken	2/8	Hertfordshire
Follow up	6/8	Kent	Follow up	3/8	Hertfordshire
Treatment	5/8	Hertfordshire	Treatment	2/8	Hertfordshire
OVERALL	5/8	Sussex	OVERALL	2/8	Hertfordshire

All users (excluding racist incidents)

Ease of contact	2/8	Hertfordshire
Actions taken	4/8	Hertfordshire
Follow up	3/8	Hertfordshire
Treatment	3/8	Hertfordshire
OVERALL	3/8	Hertfordshire

Responding to victims of crime

Pledge Point 9

Hampshire Constabulary has always valued victim care. With the introduction of the Policing Pledge, this section will be used not only to inform how we manage our victims of crime, but our progress and actions that relate to the Pledge.

Summary results of Dip-sample Victim Code Compliance checks

(latest month for available data followed by YTD)

% where victim was informed within 5 days of an investigation being closed

	Central	Isle of Wight	North & East	Portsmouth	Southampton	Western	Crime	Operations	Total
May 2009	100%	100%	100%	100%	100%	95%	Data available for June Profile		100%
YTD	100%	100%	100%	100%	100%	98%	Data available for June Profile		100%

% where the victim has been updated on a monthly basis (if applicable)

	Central	Isle of Wight	North & East	Portsmouth	Southampton	Western	Crime	Operations	Total
May 2009	100%	95%	75%	100%	100%	100%	Data available for June Profile		95%
YTD	100%	95%	75%	100%	100%	100%	Data available for June Profile		95%

% where the victim was notified upon filing (if applicable)

	Central	Isle of Wight	North & East	Portsmouth	Southampton	Western	Crime	Operations	Total
May 2009	100%	100%	85%	100%	100%	100%	Data available for June Profile		97%
YTD	100%	100%	85%	100%	100%	98%	Data available for June Profile		97%

Providing an excellent service

Victim support status for crimes

Month of May 2009	Central	Isle of Wight	North & East	Portsmouth	Southampton	Western	Total	Total %
Victim informed of VSS accepted	264	88	254	223	385	213	1427	10.42%
Victim informed of VSS declined	1872	427	1497	1186	1623	1326	7931	57.92%
VSS aware	114	12	44	25	31	148	374	2.73%
Victimless crime	692	189	688	681	586	571	3407	24.88%
Not stated	6	20	164	153	115	96	554	4.05%
Total crimes	2948	736	2647	2268	2740	2354	13693	N/A
% referred	12.82%	13.59%	11.26%	10.93%	15.18%	15.34%	13.15%	N/A

YTD to May 2009	Central	Isle of Wight	North & East	Portsmouth	Southampton	Western	Total	Total %
Victim informed of VSS accepted	542	166	500	413	758	435	2814	10.50%
Victim informed of VSS declined	3719	937	3018	2354	3237	2725	15990	59.68%
VSS aware	199	29	78	44	58	254	662	2.47%
Victimless crime	1345	380	1229	1297	1175	1137	6563	24.50%
Not stated	6	28	240	228	152	108	762	2.84%
Total crimes	5811	1540	5065	4336	5380	4659	26791	N/A
% referred	12.75%	12.66%	11.41%	10.54%	15.17%	14.79%	12.97%	N/A

Letters of appreciation

	Central	Isle of Wight	North & East	Portsmouth	Southampton	Western	Firearms Lic	Operations	Chief Constabl	Total
January 2009	11	7	10	1	0	5	2	5	13	54
February 2009	3	6	12	3	0	11	2	0	15	52
March 2009	10	7	22	0	4	12	3	4	21	83
April 2009	9	5	13	27	0	5	1	10	10	80
Total	33	25	57	31	4	33	8	19	59	269

Reports of incivility

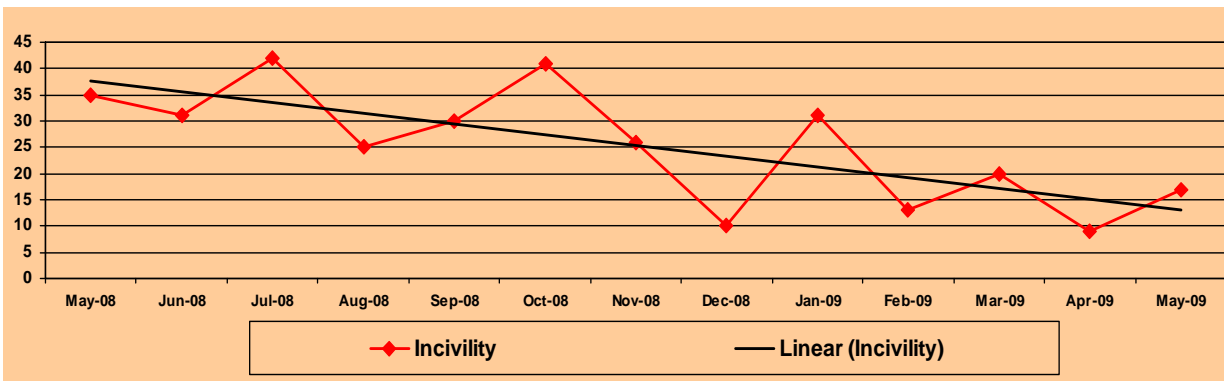
Pledge Point 10

	Central	Isle of Wight	North & East	Portsmouth	Southampton	Western	Crime	Operations	Other	Total
April 2009	2	3	1	3	0	2	0	6	0	17
May 2009	2	4	5	1	2	3	0	1	1	19
Total	4	7	6	4	2	5	0	7	1	36

NOTE: OCU Complaints totals may include complaints regarding officers who are serving within the area but are not located at that OCU

NOTE: Data/figures may change due to additional or new information

NOTE: There may be multiple allegations per complaint



This graph shows the downward trend for the volume of incivility allegations. The "Linear (incivility)" shows the trajectory of this downward trend

Allegations and their resolutions

Data for May 2009

Locally resolved by OCU	0
Locally resolved by PSD	0
Dispensed by IPCC	2
Unsubstantiated	15
Substantiated	3
Total	20

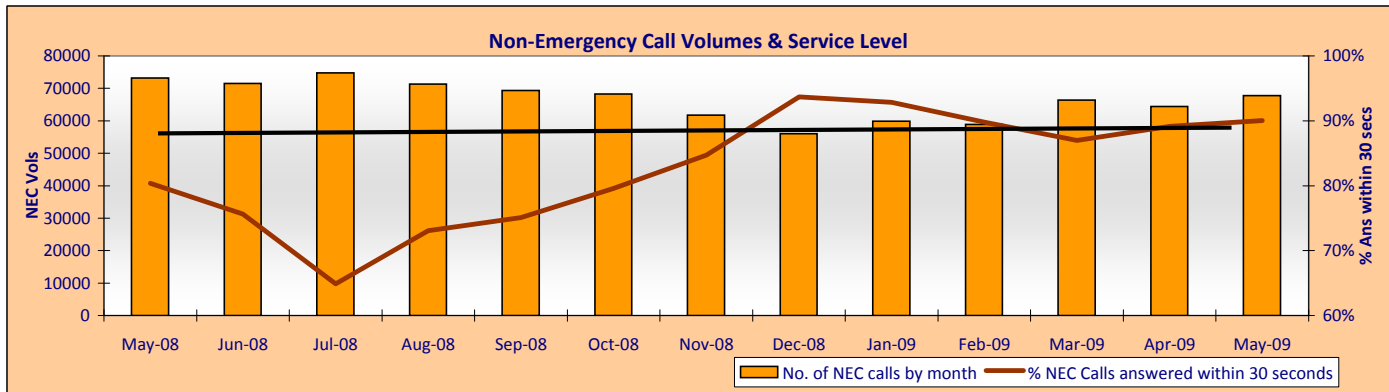
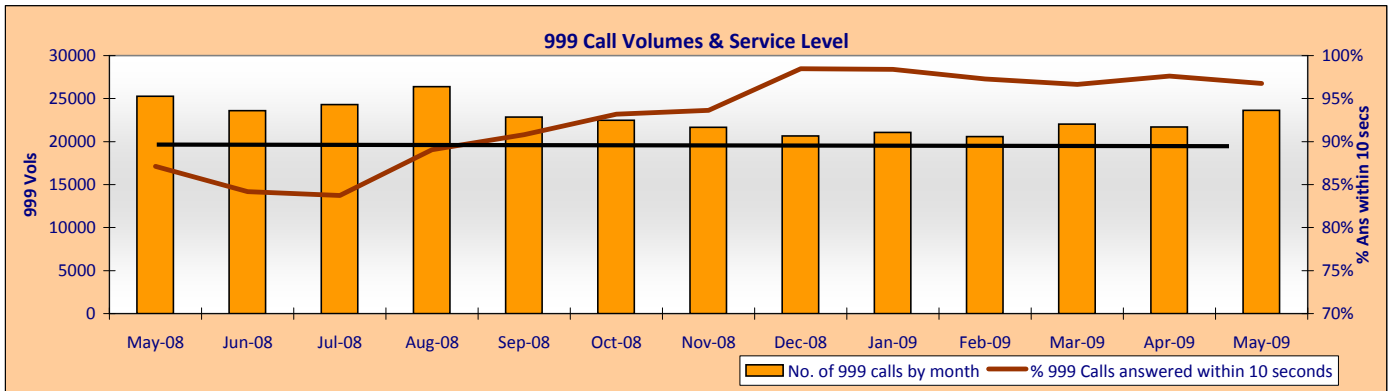
Note: Due to a backlog in finalising local resolution complaints, there is no performance data for local resolution for May 2009

Providing an excellent service

Responding to public contact

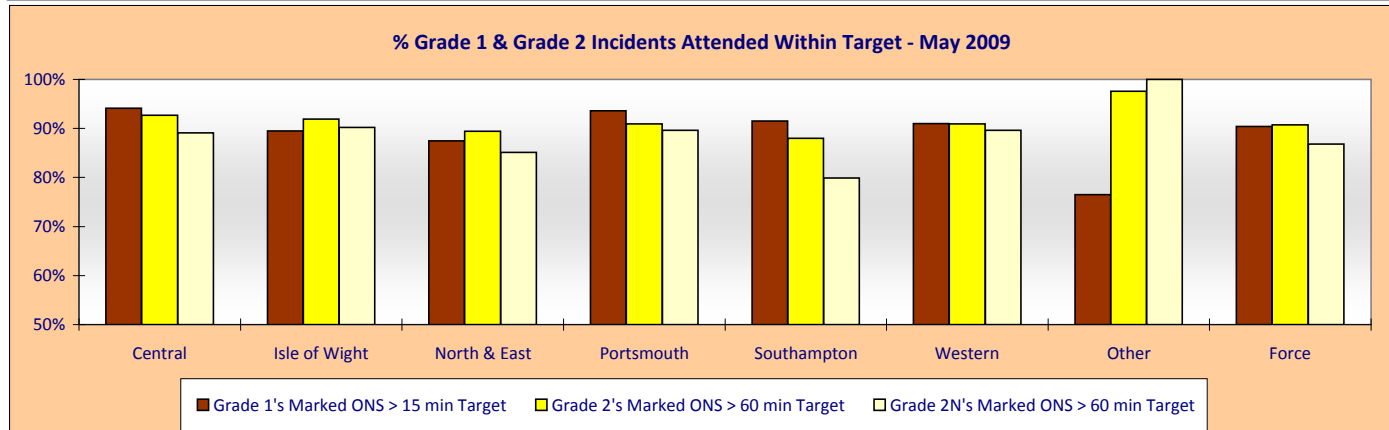
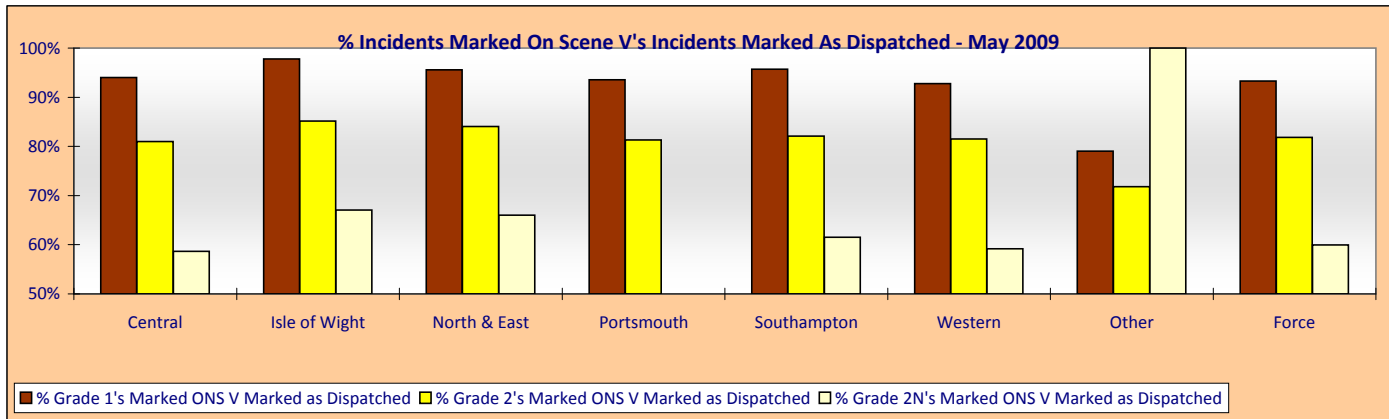
Pledge Points 5 & 6

Call Volumes: Target is to answer 90% of 999 calls within 10 seconds and 90% of Non-Emergency calls within 30 seconds



Officers Attended Within Target: This is the time from an incident being created to the 1st Officer being marked on scene on Altaris.

The % of Officers attending within target is based on the number of incidents marked on scene within target vs. the number of incidents marked on scene. If an incident is marked as having an officer dispatched, but is then subsequently not marked as On Scene, these incidents are excluded from the % Attendance.

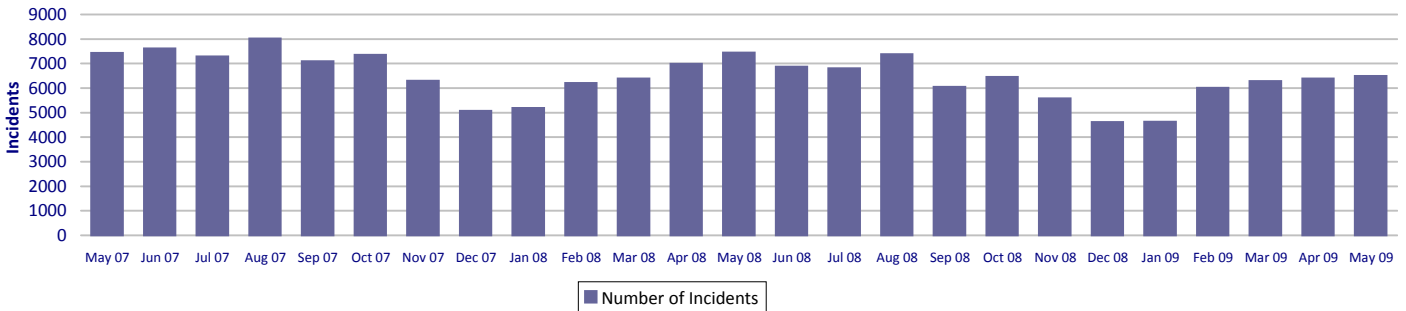


An active presence in every neighbourhood

Rowdy & nuisance behaviour

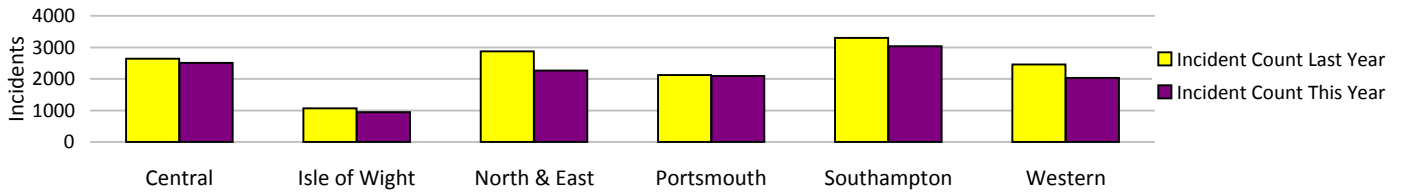
Force Target

This year the decision has been made to use RMS as the source of this data, as opposed to the NSIR return data (the figures published in the 2008/2009 Force Performance Summary used the NSIR data)



Incidents	Central	Isle of Wight	North & East	Portsmouth	Southampton	Western	Total
YTD Incidents	2509	946	2268	2091	3040	2026	12880
YTD Target	2323	894	2422	1913	2955	2045	12552
YTD 08/09 Incidents	2638	1065	2871	2120	3302	2454	14450
This month	1292	472	1212	1048	1502	966	6492
% change from 08/09	-4.9%	-11.2%	-21.0%	-1.4%	-7.9%	-17.4%	-10.9%

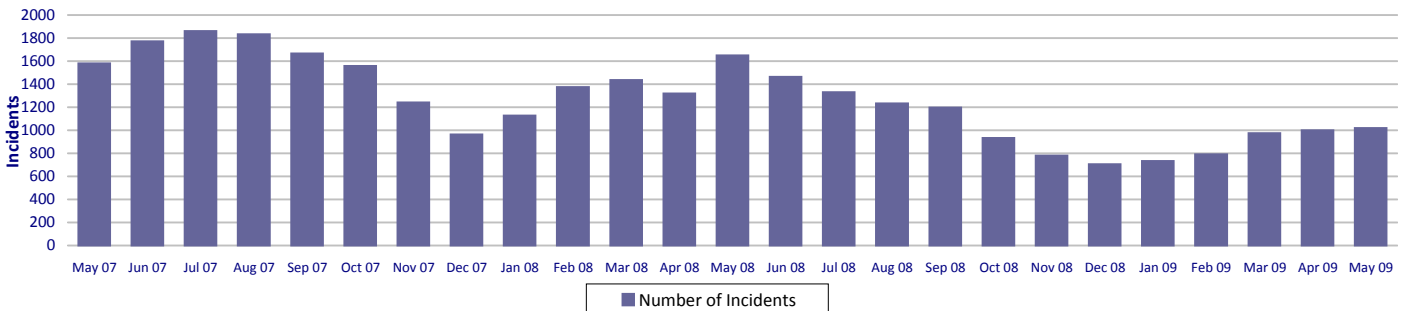
Rowdy & nuisance behaviour relates to occurrence types: Inappropriate use of Fireworks, Rowdy & Inconsiderate, Substance Misuse and Street Drinking



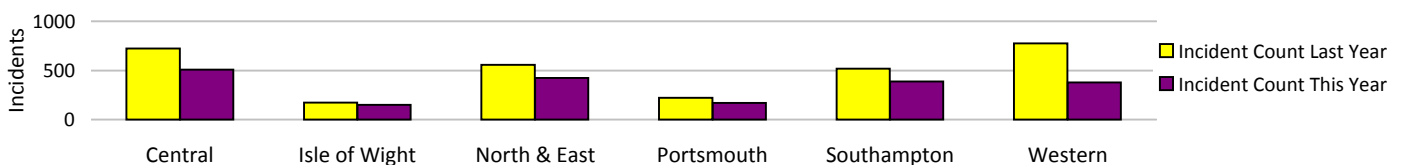
Vehicle nuisance/inappropriate vehicle use

Force Target

This year the decision has been made to use RMS as the source of this data, as opposed to the NSIR return data (the figures published in the 2008/2009 Force Performance Summary used the NSIR data)



Incidents	Central	Isle of Wight	North & East	Portsmouth	Southampton	Western	Total
YTD Incidents	507	149	425	169	389	379	2018
YTD Target	582	167	509	216	473	556	2502
YTD 08/09 Incidents	722	174	558	223	518	774	2969
This month	254	75	222	93	185	190	1019
% change from 08/09	-29.8%	-14.4%	-23.8%	-24.2%	-24.9%	-51.0%	-32.0%



An active presence in every neighbourhood

Neighbourhood Policing Teams

Policing pledge 3

Abstractions	Central	Isle of Wight	North & East	Portsmouth	Southampton	Western	Total
May 2009	3.33%	2.95%	2.98%	3.01%	1.88%	2.83%	2.86%

Target = NPT visible & accessible at least 80% of time (maximum 20% abstractions)

Community liaison data is being developed and will be available in June 2009

Data for May 2009

OCU	Years	Constable	Sergeant	Inspector	PCSOs	Total	%
Central OCU	0-1	40	10	0	15	65	32%
	1-2	30	8	0	18	56	27%
	2-5	29	10	0	44	83	41%
	Totals	99	28	0	77	204	100%
IOW OCU	0-1	14	2	1	6	23	33%
	1-2	8	3	1	4	16	23%
	2-5	8	5	0	18	31	44%
	Totals	30	10	2	28	70	100%
North & East OCU	0-1	23	6	0	30	59	37%
	1-2	15	5	0	7	27	17%
	2-5	38	4	0	31	73	46%
	Totals	76	15	0	68	159	100%
Portsmouth OCU	0-1	14	6	0	19	39	32%
	1-2	10	5	0	2	17	14%
	2-5	34	4	0	28	66	54%
	Totals	58	15	0	49	122	100%
Southampton OCU	0-1	17	2	0	29	48	35%
	1-2	14	2	0	6	22	16%
	2-5	31	10	0	25	66	49%
	Totals	62	14	0	60	136	100%
Western OCU	0-1	24	7	4	27	62	38%
	1-2	10	4	1	9	24	15%
	2-5	42	8	2	27	79	48%
	Totals	76	19	7	63	165	100%
Force	0-1	132	33	5	126	296	35%
	1-2	87	27	2	46	162	19%
	2-5	182	41	2	173	398	46%
	Totals	401	101	9	345	856	100%

SNT establishment and strength by OCU - Police

	Central	Isle of Wight	North & East	Portsmouth	Southampton	Western
Establishment	136	50	95	79	73	50
Strength	120.15	39.83	88.7	71.9	73.7	98.4
Vacancies	15.85	10.17	6.3	7.1	-0.7	-48.4

SNT establishment and strength by OCU - PCSOs

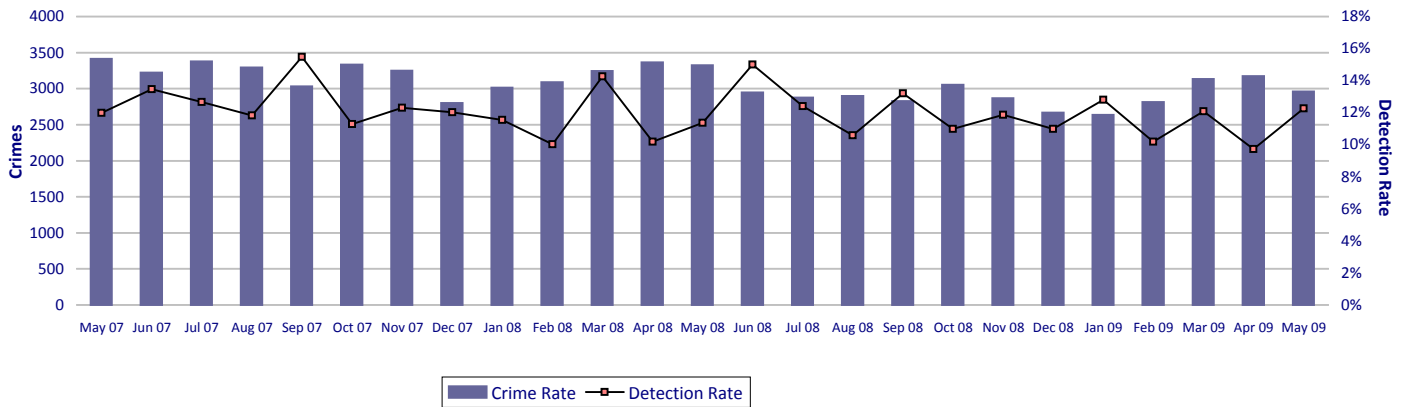
	Central	Isle of Wight	North & East	Portsmouth	Southampton	Western
Establishment	74	28	67	50	59	59
Strength	77	27.09	67.4	48.12	59.35	60.94
Vacancies	-3	0.91	-0.4	1.88	-0.35	-1.94

NOTE : Please be advised that the data has been supplied using the position start date for both Police Community Support Officers and Neighbourhood Policing Team PC/Sgt/Inspectors. Therefore, the service data will only capture the length of service an Officer/PCSO has carried out in his current post at the date of the report. This will not take into account any previous service in SNT in another OCU or a different location which has resulted in a post location change

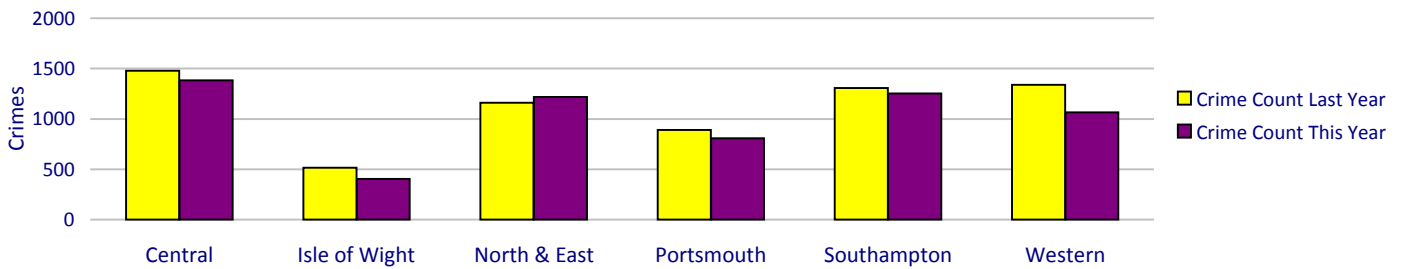
An active presence in every neighbourhood

Criminal damage

Force Target



Crimes	Central	Isle of Wight	North & East	Portsmouth	Southampton	Western	Total
YTD Crimes	1384	405	1219	808	1253	1065	6134
YTD Target	1261	419	1099	776	1109	1057	5721
YTD 08/09 Crimes	1480	515	1161	889	1307	1338	6690
This month	656	178	593	402	619	511	2959
% change from 08/09	-6.5%	-21.4%	5.0%	-9.1%	-4.1%	-20.4%	-8.3%
MSG position	14 of 15	9 of 15	14 of 15	12 of 15	15 of 15	12 of 15	8 of 8
OCU actual	4.50	4.40	4.11	5.97	8.89	3.91	4.98
MSG average	3.76	4.30	3.55	5.23	5.81	3.70	3.99



Detections	Central	Isle of Wight	North & East	Portsmouth	Southampton	Western	Total
YTD Detection Rate	11.0%	13.1%	11.0%	11.0%	9.8%	11.4%	11.0%
This month	12.2%	16.9%	12.1%	10.7%	11.6%	12.9%	12.3%
YTD 08/09 Detections	12.0%	12.2%	12.7%	8.3%	9.6%	9.9%	10.8%
MSG position	8 of 15	11 of 15	12 of 15	12 of 15	14 of 15	9 of 15	7 of 8
OCU actual	12.84	13.92	11.85	10.88	9.67	12.33	11.71
MSG average	13.66	15.62	14.20	12.18	12.42	13.81	14.41

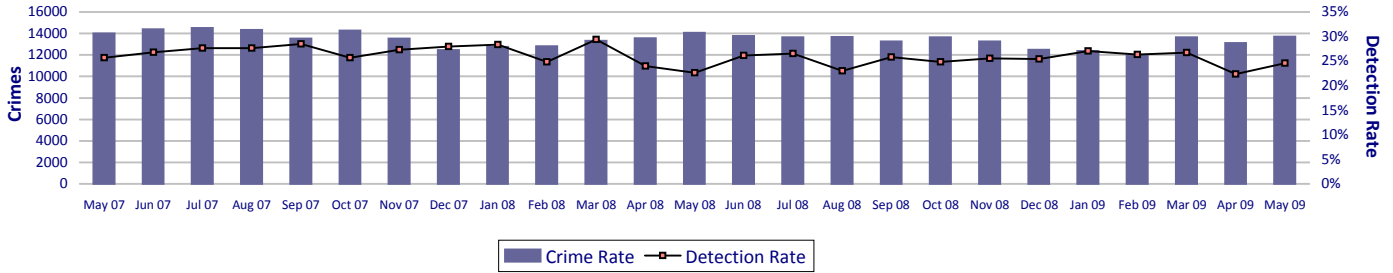
Note: Detections refer to Sanction Detections ONLY



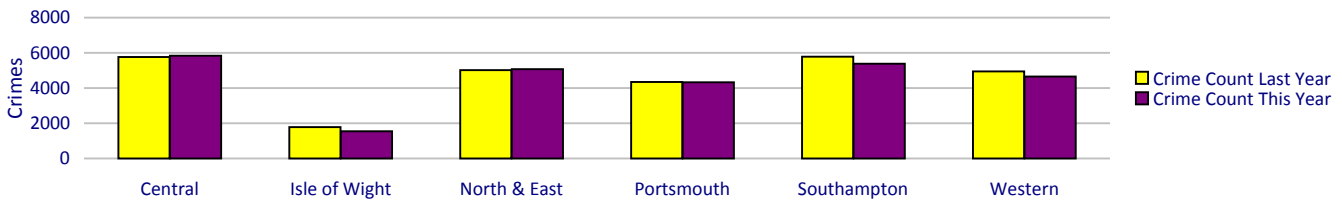
Catching criminals and managing offenders

All crime

Force Target



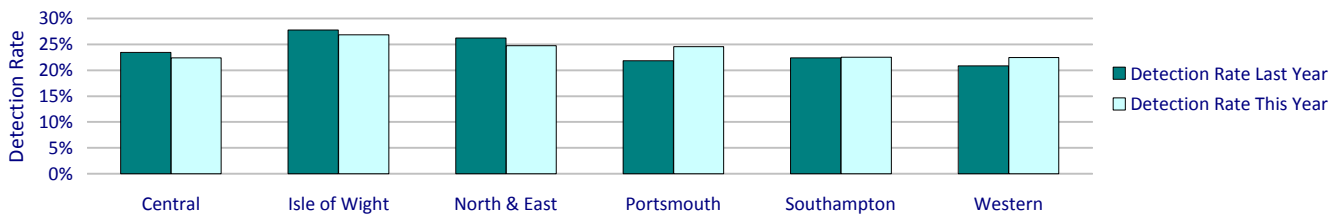
Crimes	Central	Isle of Wight	North & East	Portsmouth	Southampton	Western	Total
YTD Crimes	5829	1540	5065	4336	5380	4659	26809
YTD Target	5535	1771	5143	4234	5697	4783	27163
YTD 08/09 Crimes	5767	1776	5018	4341	5773	4951	27626
This month	2953	736	2647	2268	2740	2354	13698
% change from 08/09	1.1%	-13.3%	0.9%	-0.1%	-6.8%	-5.9%	-3.0%
MSG position	13 of 15	5 of 15	11 of 15	12 of 15	14 of 15	7 of 15	7 of 8
OCU actual	18.99	15.96	17.02	31.34	35.98	16.39	21.17
MSG average	17.32	17.29	16.24	25.69	28.08	16.06	18.78



Detections

Detections	Central	Isle of Wight	North & East	Portsmouth	Southampton	Western	Total
YTD Detection Rate	22.4%	26.8%	24.8%	24.6%	22.5%	22.5%	23.5%
This month	25.6%	28.7%	25.1%	23.8%	23.3%	23.4%	24.5%
YTD 08/09 Detections	23.4%	27.8%	26.2%	21.8%	22.4%	20.8%	23.3%
Detection Targets	25.0%	30.0%	25.5%	25.5%	25.0%	25.0%	25.0%
MSG position	13 of 15	6 of 15	11 of 15	6 of 15	9 of 15	13 of 15	7 of 8
OCU actual	23.64	32.65	25.85	25.70	24.01	23.80	25.06
MSG average	27.21	30.91	28.07	25.37	26.17	26.70	28.38

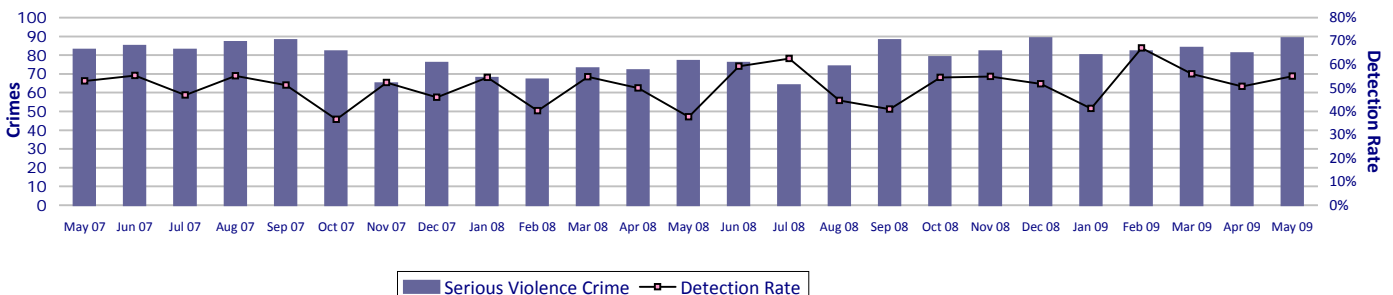
Note: Detections refer to Sanction Detections ONLY



Serious violent crime

SPI 5.1 Force Target

Serious violent crime consists of crimsec codes 1, 2, 4.1-4.4, 4.6, 4.8, 5A, 5B, 5C, 8F, 8H and 37.1

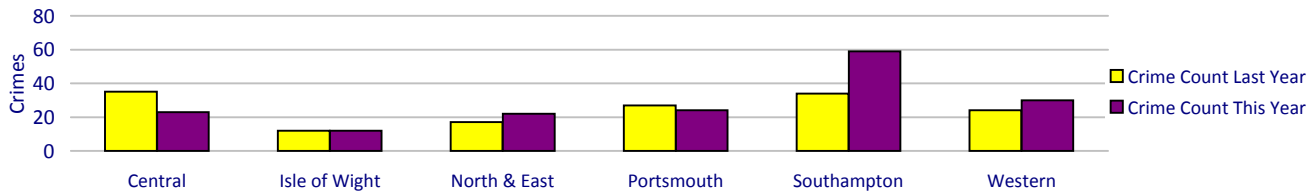


Crimes	Central	Isle of Wight	North & East	Portsmouth	Southampton	Western	Total
YTD Crimes	23	12	22	24	59	30	170
YTD Target	29	10	24	30	39	19	152

Note: MSG data is always published a month in arrears. For an explanation of this data, refer to the Summary on page 2

Catching criminals and managing offenders

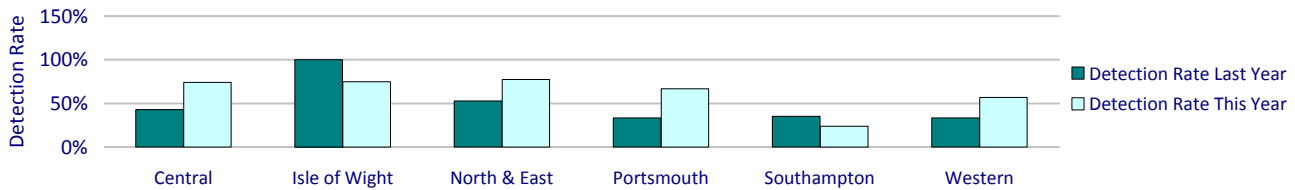
YTD 08/09 Crimes	35	12	17	27	34	24	149
This month	11	7	11	9	35	16	89
% change from 08/09	-34.3%	0.0%	29.4%	-11.1%	73.5%	25.0%	14.1%
MSG position	1 of 15	7 of 15	13 of 15	13 of 15	3 of 15	9 of 15	6 of 8
OCU actual	0.06	0.12	0.11	0.36	0.23	0.09	0.14
MSG average	0.12	0.13	0.08	0.30	0.33	0.10	0.12



Detections

	Central	Isle of Wight	North & East	Portsmouth	Southampton	Western	Total
YTD Detection Rate	73.9%	75.0%	77.3%	66.7%	23.7%	56.7%	52.9%
This month	109.1%	57.1%	100.0%	66.7%	22.9%	50.0%	55.1%
YTD 08/09 Detections	42.9%	100.0%	52.9%	33.3%	35.3%	33.3%	43.6%
Detection Targets	57.0%	60.0%	56.0%	41.0%	45.0%	50.0%	50.0%
MSG position	3 of 15	1 of 15	5 of 15	4 of 15	2 of 15	7 of 15	1 of 8
OCU actual	60.25	67.74	58.50	41.26	44.49	53.02	51.47
MSG average	50.47	51.58	54.32	36.94	38.10	53.48	45.76

Note: Detections refer to Sanction Detections ONLY



Serious Violent offences OBTJ

SPI 6.1

Data to February 2009

	Recorded Crime		Total OBTJs		Hampshire		Rolling Average	
	Month	RA	Month	RA	Month	RA	MSG	E&W
Attempted murder	0	12	0	4	0.0%	33.3%	19.0%	22.8%
Death by aggravated vehicle taking	0	0	0	0	0.0%	0.0%	200.0%	83.3%
Causing death by dangerous driving etc	0	12	2	12	0.0%	100.0%	94.3%	85.0%
Homicide and child destruction	1	13	2	21	200.0%	161.5%	167.1%	112.2%
Wounding and GBH without intent	75	755	14	205	18.7%	27.2%	28.1%	22.6%

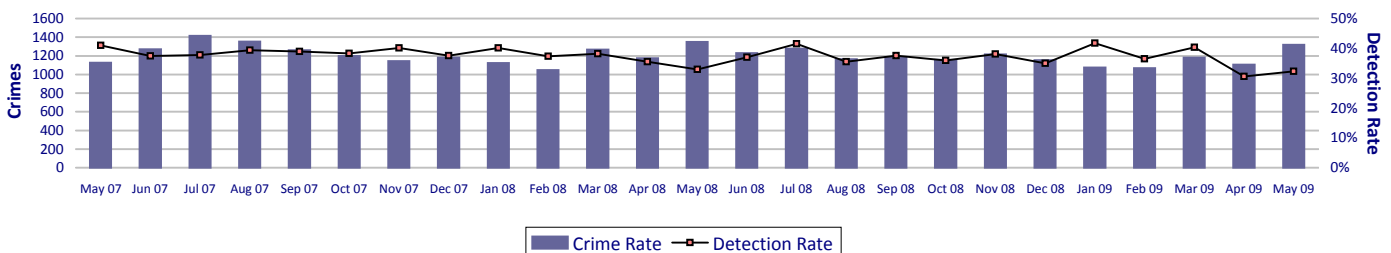
	Convictions	Caution	TICs	Cannabis Warning	PNDs
Rolling 12 month Average					
Attempted murder	4	0	0	0	0
Death by aggravated vehicle taking	0	0	0	0	0
Causing death by dangerous driving etc	12	0	0	0	0
Homicide and child destruction	21	0	0	0	0
Wounding and GBH without intent	200	5	0	0	0

RA = Rolling Annual
E&W = England & Wales

Assault with less serious injury

SPI 5.3 Force Target

Assault with less serious injury consists of crimsec codes 8G and 8J

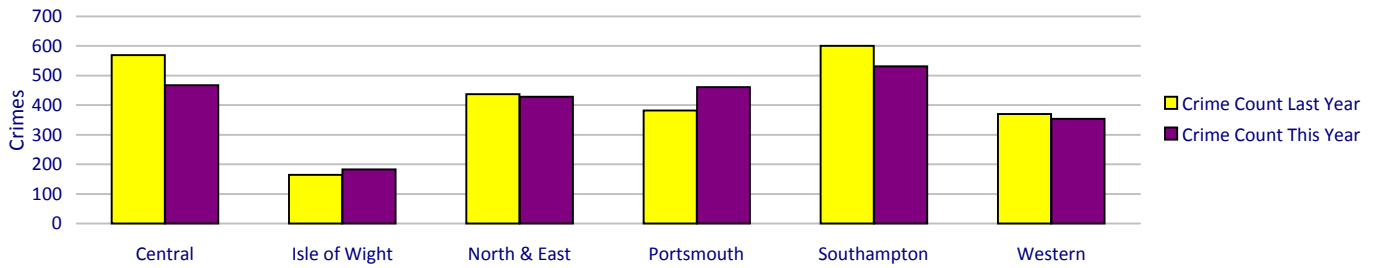


Crimes	Central	Isle of Wight	North & East	Portsmouth	Southampton	Western	Total
YTD Crimes	467	183	428	461	531	354	2424
YTD Target	485	162	409	333	543	373	2305
YTD 08/09 Crimes	569	164	437	382	601	370	2523
This month	255	82	241	254	293	194	1319
% change from 08/09	-17.9%	11.6%	-2.1%	20.7%	-11.6%	-4.3%	-3.9%

Note: MSG data is always published a month in arrears. For an explanation of this data, refer to the Summary on page 2

Catching criminals and managing offenders

MSG position	13 of 15	11 of 15	11 of 15	13 of 15	14 of 15	9 of 15	8 of 8
OCU actual	1.52	1.86	1.27	2.99	3.40	1.29	1.83
MSG average	1.29	1.62	1.16	2.14	2.42	1.30	1.49



Detections	Central	Isle of Wight	North & East	Portsmouth	Southampton	Western	Total
YTD Detection Rate	36.0%	35.0%	29.2%	21.9%	32.2%	38.1%	31.5%
This month	37.6%	37.8%	30.7%	22.0%	32.4%	38.1%	32.3%
YTD 08/09 Detections	35.1%	38.4%	36.8%	27.7%	30.1%	40.5%	34.1%
MSG position	14 of 15	11 of 15	12 of 15	13 of 15	6 of 15	5 of 15	6 of 8
OCU actual	33.87	41.63	37.36	30.10	37.96	44.16	36.99
MSG average	40.97	45.71	41.71	35.98	35.52	40.84	41.85

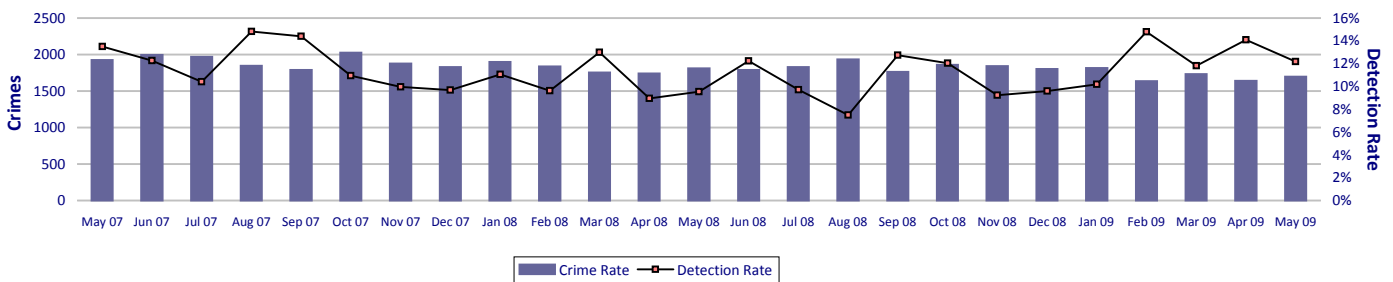
Note: Detections refer to Sanction Detections ONLY



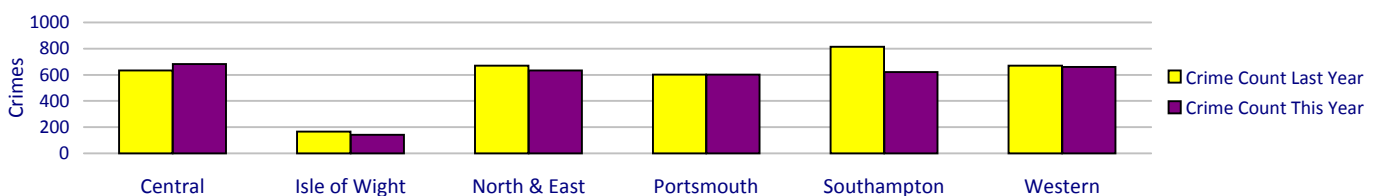
Serious acquisitive crime

SPI 5.2 Force Target

Serious acquisitive crime consists of crimsec codes 28, 29, 34A, 34B, 37/2, 45 and 48



Crimes	Central	Isle of Wight	North & East	Portsmouth	Southampton	Western	Total
YTD Crimes	682	142	633	602	621	659	3339
YTD Target	684	153	734	659	817	696	3743
YTD 08/09 Crimes	633	167	671	601	813	669	3554
This month	322	70	334	332	310	331	1699
% change from 08/09	7.7%	-15.0%	-5.7%	0.2%	-23.6%	-1.5%	-6.0%
MSG position	4 of 15	2 of 15	6 of 15	5 of 15	3 of 15	4 of 15	3 of 8
OCU actual	2.29	1.48	2.34	4.81	4.31	2.14	2.73
MSG average	3.03	2.53	2.70	5.49	5.56	2.42	3.32



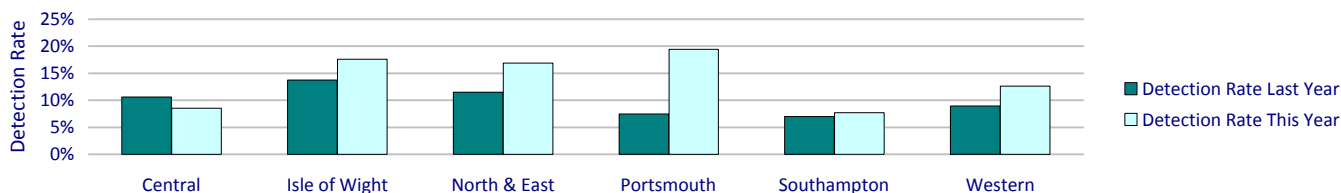
Note: MSG data is always published a month in arrears. For an explanation of this data, refer to the Summary on page 2

Catching criminals and managing offenders

Detections

Target >15%	Central	Isle of Wight	North & East	Portsmouth	Southampton	Western	Total
YTD Detection Rate	8.5%	17.6%	16.9%	19.4%	7.7%	12.6%	13.1%
This month	11.2%	18.6%	11.4%	13.3%	11.0%	12.7%	12.2%
YTD 08/09 Detections	10.6%	13.8%	11.5%	7.5%	7.0%	9.0%	9.3%
MSG position	9 of 15	9 of 15	12 of 15	5 of 15	11 of 15	11 of 15	7 of 8
OCU actual	11.40	14.43	9.51	12.99	9.66	11.04	11.02
MSG average	12.93	15.21	12.71	11.46	12.88	12.58	13.43

Note: Detections refer to Sanction Detections ONLY



Serious Acquisitive offences OBTJ

SPI 6.2

Data to February 2009	Recorded Crime		Total OBTJs		Hampshire		Rolling Average	
	Month	RA	Month	RA	Month	RA	MSG	E&W
	Aggravated burglary in a dwelling	5	62	5	14	100.0%	22.6%	23.7%
Aggravated vehicle taking	26	255	16	211	61.5%	82.8%	76.8%	70.3%
Burglary in a dwelling	517	5887	67	845	13.0%	14.4%	14.2%	15.1%
Robbery	90	1102	49	234	54.4%	21.2%	19.7%	17.7%
Theft from a vehicle	929	11383	18	322	1.9%	2.8%	7.3%	8.5%
Theft of a motor vehicle	206	3124	30	393	14.6%	12.6%	12.0%	12.5%

	Convictions	Caution	TICs	Cannabis Warnings	PNDs
	Rolling 12 month Average				
Aggravated burglary in a dwelling	13		1	0	0
Aggravated vehicle taking	189	21	1	0	0
Burglary in a dwelling	466	36	343	0	0
Robbery	228	3	3	0	0
Theft from a vehicle	178	52	92	0	0
Theft of a motor vehicle	328	41	24	0	0

RA = Rolling Annual
E&W = England & Wales

Serious acquisitive crime breakdown

Robbery

Year to date	Central	Isle of Wight	North & East	Portsmouth	Southampton	Western	Total
Crimes	16	3	20	54	72	28	193
08/09 crimes	19	2	21	44	51	20	157
% change from 08/09	-15.8%	50.0%	-4.8%	22.7%	41.2%	40.0%	22.9%
Detection rate	43.8%	66.7%	60.0%	33.3%	20.8%	17.9%	30.6%

May 2009	Central	Isle of Wight	North & East	Portsmouth	Southampton	Western	Total
Crimes	7	2	10	25	43	15	102
Detection rate	57.1%	0.0%	40.0%	56.0%	23.3%	20.0%	34.3%

Dwelling burglary

Year to date	Central	Isle of Wight	North & East	Portsmouth	Southampton	Western	Total
Crimes	192	48	185	144	160	173	902
08/09 crimes	152	52	200	192	185	180	961
% change from 08/09	26.3%	-7.7%	-7.5%	-25.0%	-13.5%	-3.9%	-6.1%
Detection rate	8.9%	10.4%	18.9%	52.8%	8.8%	31.2%	22.3%

May 2009	Central	Isle of Wight	North & East	Portsmouth	Southampton	Western	Total
Crimes	103	27	96	87	85	98	496
Detection rate	7.8%	11.1%	21.9%	25.3%	11.8%	27.6%	18.3%

Vehicle crime

Year to date	Central	Isle of Wight	North & East	Portsmouth	Southampton	Western	Total
Crimes	474	91	428	404	389	458	2244

Note: MSG data is always published a month in arrears. For an explanation of this data, refer to the Summary on page 2

Catching criminals and managing offenders

08/09 crimes	462	113	450	365	577	469	2436
% change from 08/09	2.6%	-19.5%	-4.9%	10.7%	-32.6%	-2.3%	-7.9%

Detection rate	7.2%	19.8%	14.0%	5.7%	4.9%	5.2%	7.9%
----------------	------	-------	-------	------	------	------	-------------

May 2009	Central	Isle of Wight	North & East	Portsmouth	Southampton	Western	Total
Crimes	212	41	228	220	182	218	1101
Detection rate	11.3%	24.4%	5.7%	3.6%	7.7%	5.5%	7.4%

Theft of a motor vehicle

Year to date	Central	Isle of Wight	North & East	Portsmouth	Southampton	Western	Total
Crimes	118	31	140	62	103	78	532
Detection rate	16.9%	25.8%	10.0%	25.8%	7.8%	21.8%	15.6%

May 2009	Central	Isle of Wight	North & East	Portsmouth	Southampton	Western	Total
Crimes	57	15	73	32	52	42	271
Detection rate	26.3%	33.3%	11.0%	18.8%	13.5%	19.0%	18.1%

Theft from a motor vehicle

Year to date	Central	Isle of Wight	North & East	Portsmouth	Southampton	Western	Total
Crimes	356	60	288	342	286	380	1712
Detection rate	3.9%	16.7%	16.0%	2.0%	3.8%	1.8%	5.5%

May 2009	Central	Isle of Wight	North & East	Portsmouth	Southampton	Western	Total
Crimes	155	26	155	188	130	176	830
Detection rate	5.8%	19.2%	3.2%	1.1%	5.4%	2.3%	3.9%

Robbery, dwelling burglary and vehicle crime are the component parts of Serious Acquisitive Crime. These individual crime types do not have targets.

Gun crime rate

SPI 5.5

	Central	Isle of Wight	North & East	Portsmouth	Southampton	Western	Total	MSG position
YTD May 2009	6	0	2	4	1	1	14	3 of 8
YTD May 2008	5	0	1	3	1	1	11	
% change from 08/09	20.0%	0.0%	100.0%	33.3%	0.0%	0.0%	27.3%	

Gun crime figures published reflect the APACS technical definition which includes "where the victim is convinced of the presence of a firearm, even if it is concealed and there is evidence of the suspect's intention to create this impression".

Knife crime rate

SPI 5.6

	Central	Isle of Wight	North & East	Portsmouth	Southampton	Western	Total	MSG position
YTD May 2009	11	3	22	23	35	11	105	3 of 8
YTD May 2008	24	10	24	34	39	33	164	
% change from 08/09	-54.2%	-70.0%	-8.3%	-32.4%	-10.3%	-66.7%	-36.0%	

Knife = knife or other sharp instrument (including broken glass/bottles) piercing the skin or, for threats and attempts, instruments normally capable of piercing the skin.

Knife crime figures published reflect the APACS technical definition which includes "where the victim is convinced of the presence of a knife, even if it is concealed and there is evidence of the suspect's intention to create this impression".

Serious sexual crime OBJ rate

SPI 6.4

The table below shows % of persons brought to justice for serious sexual crimes against the total number of serious sexual crimes

OBJT Crime category	Sep-08	Oct-08	Nov-08	Dec-08	Jan-09	Feb-09	Rolling average
Tier 1: Serious Sexual Offences	28%	20%	26%	30%	Data unavailable	16%	29%

Murder offences

SPI 5.4

	Central	Isle of Wight	North & East	Portsmouth	Southampton	Western	Total
YTD May 2009	0	0	0	1	0	0	1
YTD Domestic Murders 2009	0	0	0	0	0	0	0
YTD May 2008	0	0	0	0	0	0	0
YTD Domestic Murders 2008	0	0	0	0	0	0	0
% change from 08/09							Not applicable

FIU1 submissions

	Central	Isle of Wight	North & East	Portsmouth	Southampton	Western	Total
May 2009	10	21	20	12	30	6	99
Number of eligible crimes	351	102	325	305	295	245	1623
% submission rate	3%	21%	6%	4%	10%	2%	6%

YTD May 2009	Central	Isle of Wight	North & East	Portsmouth	Southampton	Western	Total
	32	42	33	27	43	24	201

Note: MSG data is always published a month in arrears. For an explanation of this data, refer to the Summary on page 2

Catching criminals and managing offenders

Number of eligible crimes	619	185	626	609	559	485	3083
% submission rate	5%	23%	5%	4%	8%	5%	7%

Eligible crimes are those covered by Proceeds of Crime Act (POCA)

Prolific and other Priority Offenders (PPOs) convictions

Number of convictions recorded against identified, prolific and other priority offenders (PPOs)

Convictions	Sep 2008	Oct 2008	Nov 2008	Dec 2008	Jan 2009	Feb 2009	Mar 2009
Persistent Young Offenders	74	86	71	89	94	83	80
Priority Prolific Offenders	20	35	13	28	27	40	25
Persistent Priority Prolific Young Offenders	2	1	2	5	3	2	2
Young Offenders	192	155	162	183	230	162	191

Class A drugs sanction detections

Force Target

	Central	Isle of Wight	North & East	Portsmouth	Southampton	Western	Crime	Operations	No OCU	Total
YTD May 2009	5	1	12	3	1	16	1	1	4	44
YTD Target	8.36	6.68	13.37	13.37	16.71	8.36	No target	No target	No target	66.85
YTD May 2008	2	6	10	0	4	4	34	1	2	63

Drug Seizures information

	Central	Isle of Wight	North & East	Portsmouth	Southampton	Western	Total
YTD April 2009	98	35	70	67	71	76	417
YTD April 2008	81	40	44	59	73	51	348
% change from 08/09	21.0%	-12.5%	59.1%	13.6%	-2.7%	49.0%	19.8%

Note: This data is produced one month in arrears

Number of Organised Crime Groups (OCGs) disrupted

Force Target

YTD May 2009	2008/2009	2009/2010
Number of OCGs identified and mapped	7	0
Number of OCGs disrupted or partially disrupted through Crime OCU activity	3	0
Number of OCGs subject to tactical activity	8	13

Protecting our communities

Domestic violence and abuse is defined by ACPO as: 'any incidence of threatening behaviour, violence or abuse (psychological, physical, sexual, financial or emotional) between adults, aged 18 and over, who are or have been intimate partners or family members, regardless of gender or sexuality'

Domestic violence and abuse crime arrest rate

Force Target

Domestic violence arrest rate is based on records where the occurrence has been flagged as a domestic, and has an arrest event or a linked person reason of arrested.

Target >80%

Year to Date	Central	Isle of Wight	North & East	Portsmouth	Southampton	Western	Total
Domestic Crimes	322	95	244	228	333	228	1450
Domestic Crime Arrests	223	69	168	173	246	167	1046
Domestic Crime Arrest Rate	69.3%	72.6%	68.9%	75.9%	73.9%	73.2%	72.1%

Month	Central	Isle of Wight	North & East	Portsmouth	Southampton	Western	Total
Domestic Crimes	173	46	124	116	162	124	745
Domestic Crime Arrests	114	31	79	84	121	84	513
Domestic Crime Arrest Rate	65.9%	67.4%	63.7%	72.4%	74.7%	67.7%	68.9%

Police No Further Action (NFA) Rate

Year to Date	Central	Isle of Wight	North & East	Portsmouth	Southampton	Western	Total
Domestic Crimes	Data available in July						
Domestic Crime NFA'd	Data available in July						
Domestic Crime NFA Rate	Data available in July						

Month	Central	Isle of Wight	North & East	Portsmouth	Southampton	Western	Total
Domestic Crimes	Data available in July						
Domestic Crime NFA'd	Data available in July						
Domestic Crime NFA Rate	Data available in July						

Repeat incidents of domestic violence cases reviewed at MARAC

SPI 14.1

A Multi Agency Risk Assessment Conference (MARAC) meet to manage the highest risk domestic abuse cases. A 'case' = a victim & perpetrator(s) being reviewed at the same MARAC. Once a case has been to MARAC, it remains flagged as a MARAC case for 12 mths after the most recent MARAC review. A repeat case is when a case reviewed at MARAC has also been reviewed at the same MARAC within the preceding 12 mths. For further information on this measure please refer to Home Office Guidance on Performance Indicators for Policing & Community Safety 09/10.

Year to Date	Central	Isle of Wight	North & East	Portsmouth	Southampton	Western	Total
Number of cases reviewed at MARAC	56	36	No data received	No data received	48	No data received	140
Repeat cases reviewed at MARAC	20	16	No data received	No data received	18	No data received	54
% Repeat cases	35.7%	44.4%	No data received	No data received	37.5%	No data received	38.6%

Hate crime detection rate

Force Target

Target >45%

Year to Date	Central	Isle of Wight	North & East	Portsmouth	Southampton	Western	Total
Incidents	44	7	41	60	81	32	265
Crimes	35	7	34	50	58	28	212
Detections	11	5	19	22	30	6	93
Detection Rate	31.4%	71.4%	55.9%	44.0%	51.7%	21.4%	43.9%

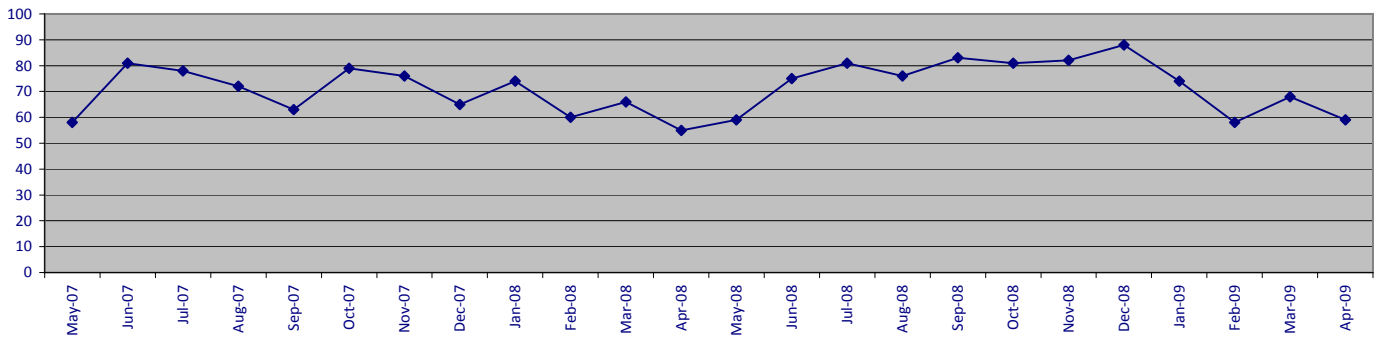
Month	Central	Isle of Wight	North & East	Portsmouth	Southampton	Western	Total
Incidents	17	3	21	28	49	12	130
Crimes	18	3	19	23	35	10	108
Detections	7	3	13	10	20	4	57
Detection Rate	38.9%	100.0%	68.4%	43.5%	57.1%	40.0%	52.8%

Protecting our communities

Road traffic casualties

SPI 9.1 Force Target

Fatal/serious injury casualties - all victims

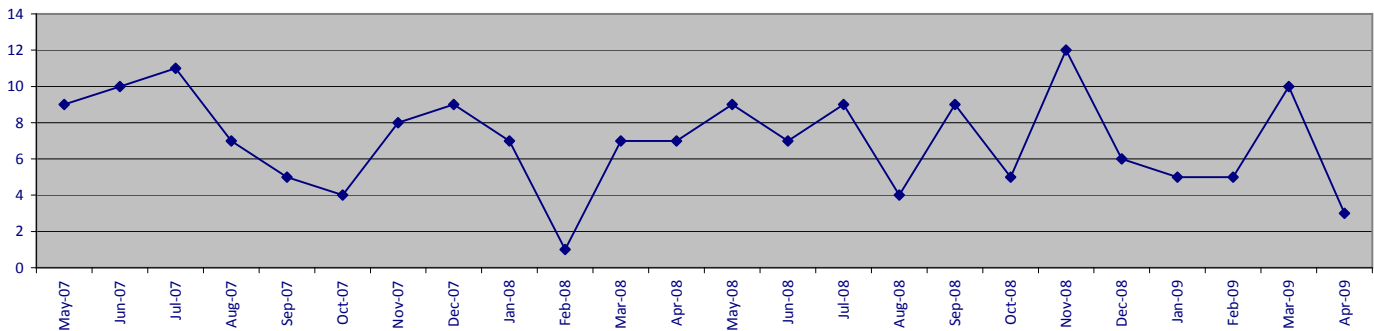


The Force target 2009/2010 is for less than 888 casualties, which equates to less than 73 in 30 days

YTD Apr 2009 = 59 casualties

	Central	Isle of Wight	North&East	Portsmouth	Southampton	Western	Total
April 2009	15	5	11	6	10	12	59
of these, fatalities were	0	0	1	1	0	2	4
April 2008	9	6	14	5	3	18	55

Fatal/serious injury casualties - victims under 16 years



The DETR target is for a 50% reduction in child casualties by 2010 from 164 to 82

	Central	Isle of Wight	North&East	Portsmouth	Southampton	Western	Total
April 2009	1	0	0	1	1	0	3
of these, fatalities were	0	0	0	0	0	0	0
April 2008	2	0	2	1	0	2	7

Note: YTD numbers may change as the accident record data are updated each month

Note: The casualties in East Hampshire have all been attributed to North & East OCU in the absence of a breakdown by OCUs

Making the most of our resources

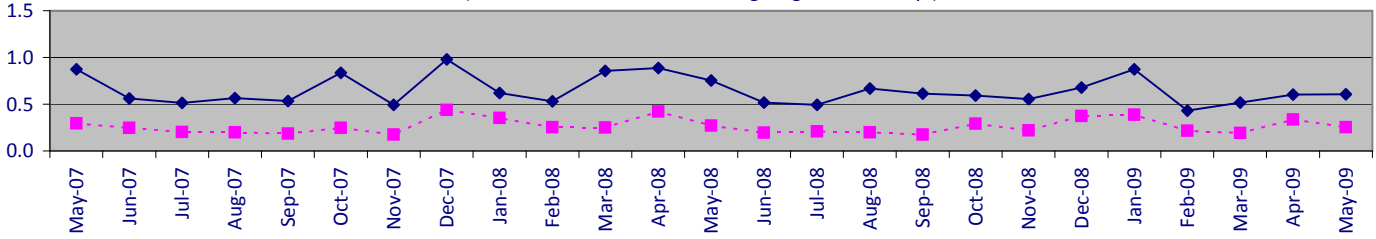
SPI 13.1 Force Target

All Police officer sickness YTD = **1.21**

All Police officer sickness May = **0.61**

Police officers in OCUs

Sickness and injury absence days per officer by month
(broken line shows data excluding long-term sick days)

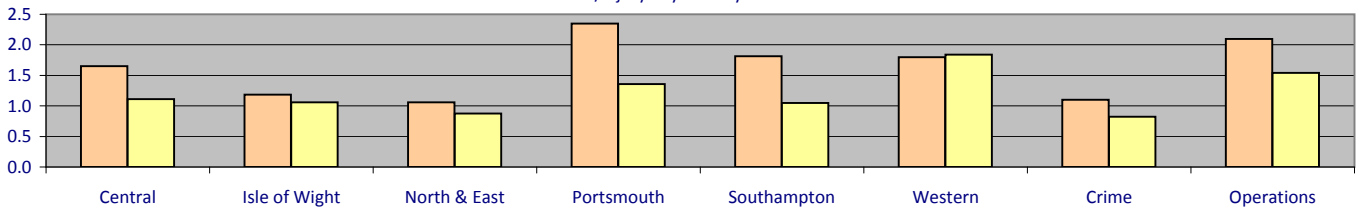


Force target for 09/10 = 7.5 days or fewer per officer (1.25 for 2 months) YTD = **1.21** days lost per officer

	Central	Isle of Wight	North & East	Portsmouth	Southampton	Western	Crime	Operations	OCU Totals
YTD Apr 09 - May 09	1.11	1.06	0.87	1.36	1.05	1.84	0.82	1.54	1.21
YTD Apr 08 - May 08	1.65	1.18	1.06	2.35	1.81	1.80	1.10	2.10	1.64
This month	0.61	0.64	0.54	0.56	0.35	0.95	0.27	0.93	0.61
% change	-32.7%	-10.8%	-17.3%	-42.2%	-42.2%	2.5%	-25.2%	-26.5%	-26.2%
Short Term only Apr 09 - May 09	0.65	0.64	0.49	0.74	0.45	0.52	0.38	0.91	0.59

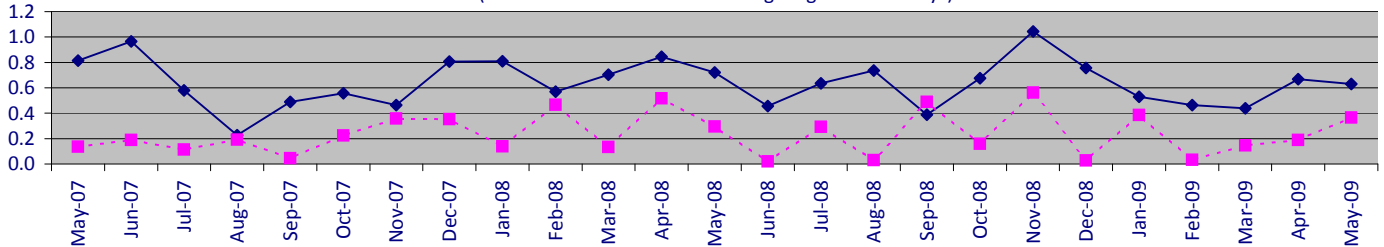
From January 09 "Operations" no longer includes SO Portfolio and Projects Staff

Sickness/injury days lost by officer YTD



Police officers not in OCUs

Sickness and injury absence days per police officer by month
(broken line shows data excluding long-term sick days)

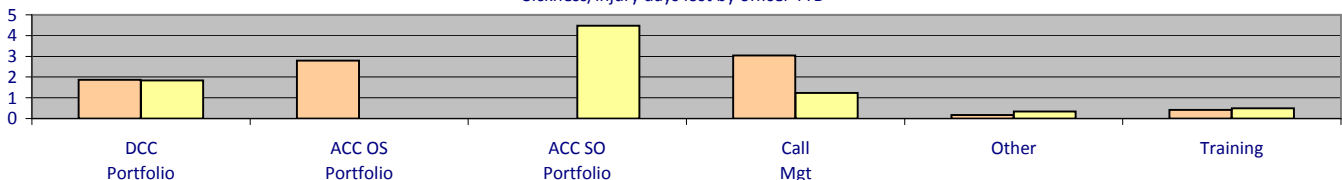


Force target for 09/10 = 7.5 days or fewer per officer (1.25 for 2 months) YTD = **1.30** days lost per officer

	DCC Portfolio	ACC OS Portfolio	ACC SO Portfolio	Call Mgt	Other	Training	Non-OCU Totals
YTD Apr 09 - May 09	1.84	0.00	4.48	1.24	0.33	0.49	1.30
YTD Apr 08 - May 08	1.86	2.80	0.00	3.04	0.17	0.42	1.56
This month	0.73	0.00	2.18	0.88	0.00	0.21	0.63
% change	-1.2%	0.0%	0.0%	-59.3%	100.0%	16.3%	-16.7%
Short Term only Apr 09 - May 09	0.32	0.00	0.38	1.24	0.33	0.49	0.55

ACC OS Portfolio excludes Call Mgt & Training figures which are reported on separately. No police officers work within DoF Portfolio. From Jan 09 -SO Portfolio includes CJD, SO Portfolio & Projects Staff; Other includes CC Portfolio & Finance Portfolio

Sickness/injury days lost by officer YTD



Making the most of our resources

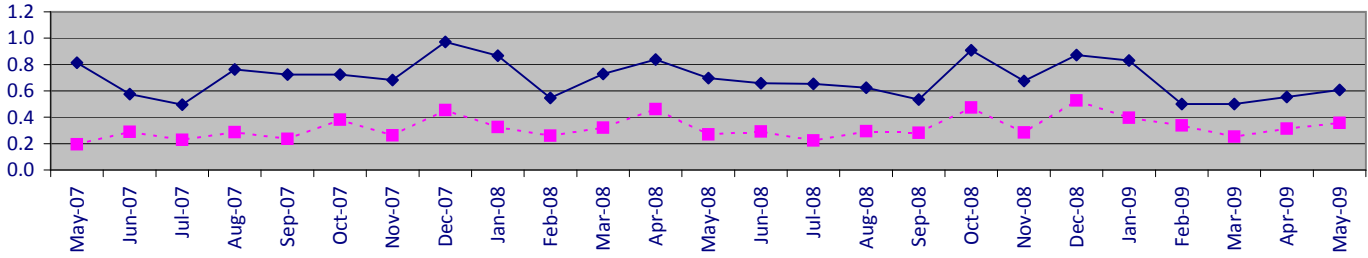
SPI 13.2 Force Target

All Police staff sickness YTD = **1.29**

All Police staff sickness May = **0.66**

Police staff in OCU's

Sickness and injury absence days per police staff member by month
(broken line shows data excluding long-term sick days)

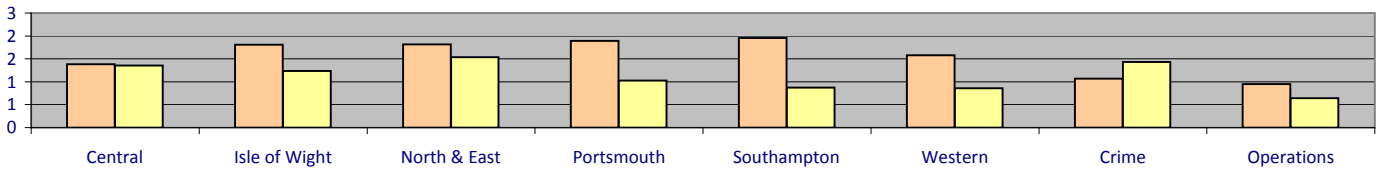


Force target for 09/10 = 7.5 days or fewer per staff (1.25 for 2 months) YTD = **1.16** days lost per staff member

	Central	Isle of Wight	North & East	Portsmouth	Southampton	Western	Crime	Operations	OCU Totals
YTD Apr 09 - May 09	1.35	1.23	1.54	1.03	0.87	0.86	1.43	0.64	1.16
YTD Apr 08 - May 08	1.38	1.81	1.81	1.89	1.95	1.58	1.07	0.95	1.54
This month	0.69	0.90	0.69	0.40	0.47	0.58	0.70	0.42	0.61
% change	-1.9%	-31.8%	-15.2%	-45.7%	-55.3%	-45.5%	34.3%	-32.4%	-24.7%
Short Term only Apr 09 - May 09	0.65	0.91	0.68	0.79	0.48	0.73	0.70	0.47	0.67

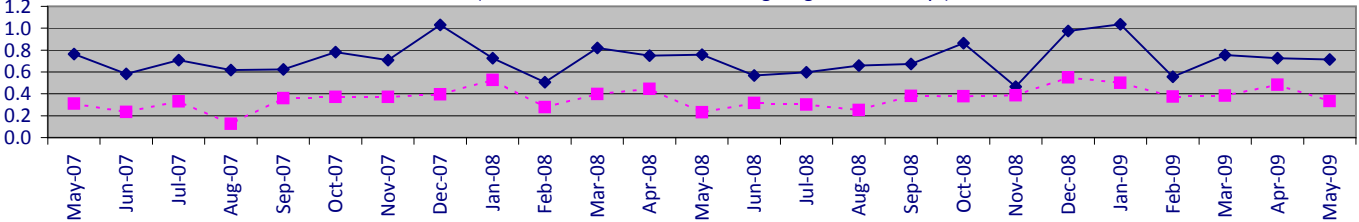
From January 09 "Operations" no longer includes SO Portfolio and Projects Staff

Sickness/injury days lost by Police Staff YTD



Police staff not in OCU's

Sickness and injury absence days per police staff member by month
(broken line shows data excluding long-term sick days)



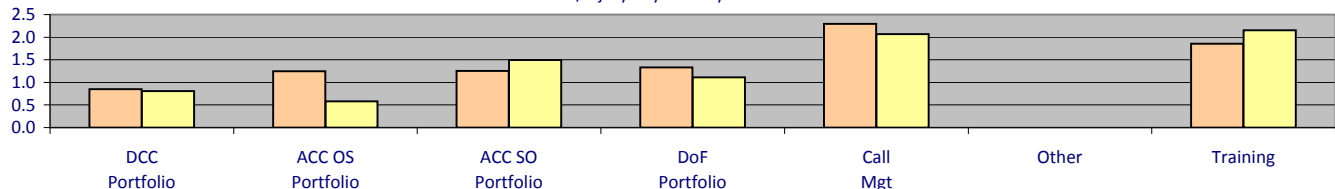
Force target for 09/10 = 7.5 days or fewer per staff (1.25 for 2 months) YTD = **1.44** days lost per staff member

	DCC Portfolio	ACC OS Portfolio	ACC SO Portfolio	DoF Portfolio	Call Mgt	Other	Training	Non-OCU Totals
YTD Apr 09 - May 09	0.81	0.58	1.49	1.11	2.07	0.00	2.15	1.44
YTD Apr 08 - May 08	0.85	1.24	1.25	1.33	2.29	0.00	1.86	1.51
This month	0.32	0.13	0.74	0.45	1.14	0.00	1.23	0.71
% change	-4.6%	-53.5%	19.0%	-16.4%	-9.6%	0.0%	15.9%	-4.6%
Short Term only Apr 09 - May 09	0.51	0.58	0.83	0.49	1.24	0.00	0.80	0.81

ACC OS Portfolio excludes Call Mgt & Training figures which are reported on separately.

From Jan 09 - SO Portfolio includes CJD, SO Portfolio and Projects Staff; Currently Other includes only CC Portfolio

Sickness/injury days lost by Police Staff YTD

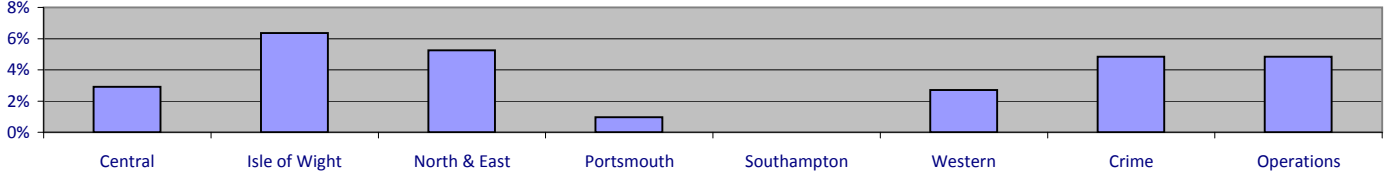


Making the most of our resources

Overdue PDRs

Police officer PDRs - police officers in OCUs

PDRs overdue by 1 month or more - police officers on OCUs

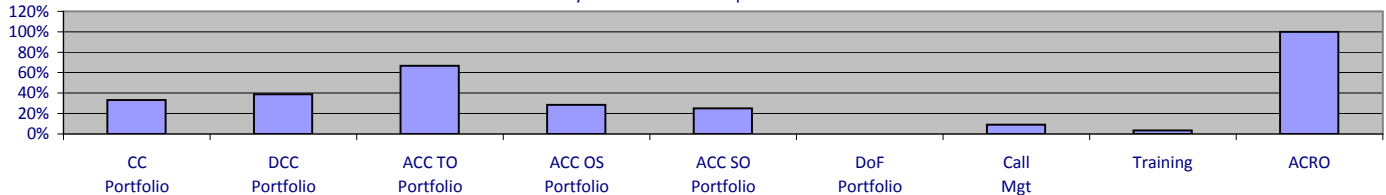


May 2009	Central	Isle of Wight	North & East	Portsmouth	Southampton	Western	Crime	Operations
Population	619	220	552	412	505	517	414	392
Overdue	18	14	29	4	0	14	20	19
% overdue	2.9%	6.4%	5.3%	1.0%	0.0%	2.7%	4.8%	4.8%

From January 09 "Operations" no longer includes SO Portfolio and Projects Staff

Police officer PDRs - police officers not on OCUs

PDRs overdue by 1 month or more - police officers not on OCUs



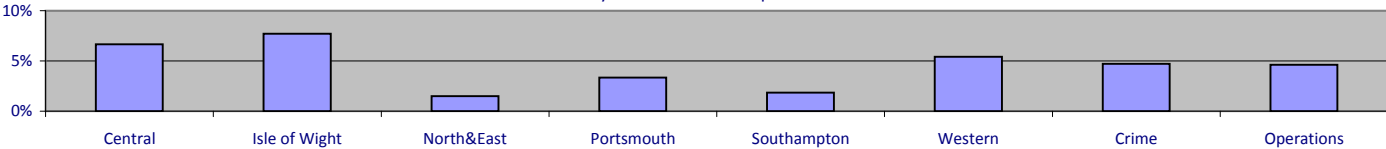
May 2009	CC Portfolio	DCC Portfolio	ACC TO Portfolio	ACC OS Portfolio	ACC SO Portfolio	DoF Portfolio	Call Mgt	Training	ACRO
Population	9	49	6	7	12	N/A	33	56	2
Overdue	3	19	4	2	3	N/A	3	2	2
% overdue	33.3%	38.8%	66.7%	28.6%	25.0%	N/A	9.1%	3.6%	100.0%

ACC OS Portfolio excludes Call Mgt & Training figures which are reported on separately. No police officers work within DoF Portfolio

From Jan 09 - SO Portfolio includes CJD, SO Portfolio and Projects Staff

Police staff PDRs - police staff in OCUs

PDRs overdue by 1 month or more - police staff on OCUs

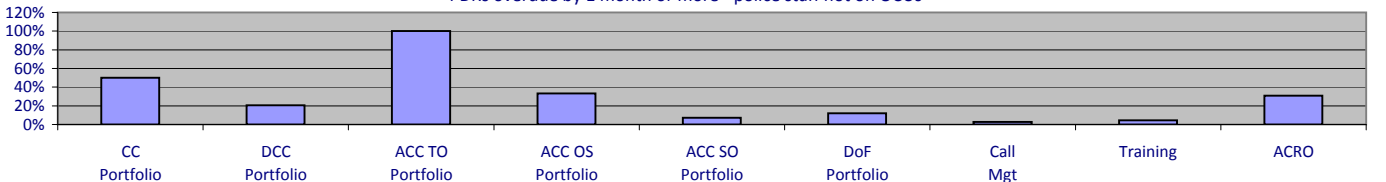


May 2009	Central	Isle of Wight	North&East	Portsmouth	Southampton	Western	Crime	Operations
Population	240	104	202	179	215	203	319	130
Overdue	16	8	3	6	4	11	15	6
% overdue	6.7%	7.7%	1.5%	3.4%	1.9%	5.4%	4.7%	4.6%

From January 09 "Operations" no longer includes SO Portfolio and Projects Staff

Police staff PDRs - police staff not in OCUs

PDRs overdue by 1 month or more - police staff not on OCUs



May 2009	CC Portfolio	DCC Portfolio	ACC TO Portfolio	ACC OS Portfolio	ACC SO Portfolio	DoF Portfolio	Call Mgt	Training	ACRO
Population	2	302	2	63	340	143	408	92	78
Overdue	1	62	2	21	24	17	11	4	24
% overdue	50.0%	20.5%	100.0%	33.3%	7.1%	11.9%	2.7%	4.3%	30.8%

ACC OS Portfolio excludes Call Mgt & Training figures which are reported on separately

From Jan 09 - SO Portfolio includes CJD, SO Portfolio and Projects Staff

Making the most of our resources

NCRS compliance

	Central	Isle of Wight	North & East	Portsmouth	Southampton	Western	Crime
Self-Inspection	91.0%	85.0%	80.0%	66.0%	81.0%	90.0%	No data

Note: Self-Inspections - only appealed records are moderated by the Force Crime Registrar

These inspections were undertaken in March 2008

Budget spend

There is currently no data available for this measure as it is the beginning of the year

	Central	Isle of Wight	North & East	Portsmouth	Southampton	Western	Crime	Operations
Budget variance	Data will be available for the June Profile							

Efficiency savings

SPI 12.1

There is currently no data available for this measure as it is the beginning of the year

Making the most of our resources

Specialist support

	OCU Supported							Total
	1	2	3	4	5	6	Other	
April 2009	2	1	4	4	4	1	0	16
May 2009	1	1	0	3	3	0	0	8
Total	3	2	4	7	7	1	0	24

NOTE: An 'assist' includes assistance that is outside of normal working practices and can encompass practical resources and/or managerial support. For example, it includes support with house to house/investigative enquiries, administrative support, interviewing/statement taking, advice and IT examinations, to name a few. A single assist can involve anything from one member of staff to several from a period of a few hours, to a whole week. An assist does not include phone calls.

8 OCU Commitment to ANPR Operations - April - May 2009								
	OCU Supported							Total
	1	2	3	4	5	6	Other	
No. of Ops	19	1	1	12	5	5	0	43
Arrests	10	1	1	10	7	0		29
S.165 Vehicle Seizures	40	1	3	57	30	8		139
Impaired Drivers	8	0	2	12	11	5		38
C12a	39	0	0	2	6	8		55
C12b	0	0	0	2	0	0		2
Total Results	97	2	6	83	54	21	0	263

8 OCU Arrests for Death by Driving Offences April - May 2009			
	Persons Arrested	No. of Arrests	Police Disposals
4/04 Causing Death by Dangerous Driving	0	0	0
4/06 Causing Death by Careless Driving under Influence of Drink or Drugs	1	1	1
4/08 Causing Death by Careless or Inconsiderate Driving	2	2	2
4/09 Causing Death by Driving: Unlicensed, Disqualified or Uninsured Drivers	0	0	0
Total	3	3	3

Interventions in support of OCUs and Force Strategy YTD							
	Persons Arrested	April 2009 Incidents attended* ¹			FPNs* ²		S165 Vehicle Seizures* ³
		Total	% DSP	% ONS	Disorder	Other	
Air Support Unit	3	Data given as a whole for 8 OCU				1	
Dog Support Unit	43				0	17	
Force Support Unit	69				0	0	
Ops Policy & Planning	0				0	0	
Specialist Firearms Officers	39				1	16	
Armed Response Vehicles	194				2	110	
Roads Policing Unit	386				2	2348	
Total	734	20225	15.08%	10.16%	5	2492	685

*¹ Altaris data - Dispatch (DSP) and Arrival (ONS) of 8 OCU units as a percentage of Grade 1 and 2 incidents

8 OCU units were OnScene at 68.07% of those incidents they were dispatched to

8 OCU units currently equate to approx 8% of the Force frontline operational officers

*² FPNs are Fixed Penalty Notices issued

*³ Vehicles seized under Section 165 of the Road Traffic Act are for No Insurance or No Driving Licence

Equipping our team to deliver

Financial awareness training

Financial awareness training will be undertaken for budget holders with the aim of ensuring a minimum of 95% of budget holders are trained by the end of the financial year

	Full Year Apr 09 - Mar 10		Year to Date (May 09)	
	Courses Planned	Numbers Trained	Courses Planned	Numbers Trained
Financial Management	10	160	0	0

Preparing for frontline supervision

A leadership project is underway and a formal Force leadership target will be established with supporting material to be published here in the coming months

	Full Year Apr 09 - Mar 10		Year to Date (May 09)	
	Courses Planned	Numbers Trained	Courses Planned	Numbers Trained
Sergeants Operational Activities	6	108	1	8
Inspectors Statutory Responsibilities	5	70	1	12
First Line Manager - Leadership Part 1	6	96	1	15
First Line Manager - Leadership Part 2	6	96	3	45
First Line Manager - Action Learning Sets	18	108	4	51

Mobile data

A mobile data project is underway - no information will be available before September 2009

Minority Ethnic Officer Recruitment

SPI 3.1

	All recruits	Minority ethnic recruits	%
YTD May 2009	29	1	3.4%

Female Officer Representation

SPI 3.2

	Male strength	Female strength	%
YTD May 2009	2712.1	1023.2	27.4%