

# Performance Profile January 2010



## Summary

## 2009/10 Reporting Year

This document contains a strategic overview of the Constabulary's performance. It has a variety of performance measures within it. The format of the profile has been aligned to the Policing Priorities identified by the Control Strategy. It provides information on our performance against Force targets, some of the APACS Indicators and the Policing Pledge. It also aims to provide supplementary information to assist in understanding reasons behind the performance in these areas. It has been designed as a headline document that will enable our customers, both internally and externally, to easily assess performance information for key domains.

At the front of the document there are several matrices that reflect our performance against our targets, firstly year to date and secondly relevant for that particular month.

Performance in key areas is then explored in more depth with an indication of where each measure has originated - for example, APACS Indicator or a Force Control Strategy (FCS) measure.

Where applicable, within the document, MSG (Most Similar Group) data is published along with the crime and detection data. MSGs are calculated by the Home Office based on a number of socio-demographic & geographic variables which are strongly linked to crime/incident levels and the fear of crime. These groups provide a benchmark for comparison of crime and detection rates. Below the applicable crime tables there are three rows relating to MSG data. The first provides the MSG position for the OCU/Force for that crime type. The second displays OCU Actual, this is the number of offences per 1,000 population. The third row shows the MSG Average which is the total number of offences per 1,000 population divided by the number within the MSG. The same three rows are provided in relation to detection data, where data is provided in % figures rather than per 1,000 population.

Please note: iQuanta data is provisional. Within the profile, Hampshire data is published and compared against the MSG average. The other forces within Hampshire's MSG are: Avon and Somerset, Bedfordshire, Essex Hertfordshire, Kent, Sussex and Thames Valley. We are unable to provide figures from iQuanta for these forces, due to the provisional nature of this data.

This document is then taken forward by key stakeholders within the organisation to the Force Performance Review Group, where it is used to highlight areas of good performance and those for development.

Crime OCU contribute to the following areas within this document, either via investigation, forensic support, and/or review of these crimes: homicide, serious violent, sexual and acquisitive crime, class A drug seizures, domestic violence/hate crime, FIU form submissions, gun/knife crime (where this results in a major investigation/forensic support), SO assistance to TO, sickness and PDRs.

This is an evolving document and as such, the content may alter over time and any feedback would be welcomed by the Performance Review Team.

MSG Colour Key

Force	OCU
1-2	1-4
3-4	5-8
5-6	9-12
<b>7-8</b>	<b>13-15</b>

## Year to date and Monthly performance matrices

4-6

including notes on matrices terminology

## Policing Pledge Scorecard

## 7 Policing Pledge Scorecard

## Providing an excellent service

8	National public confidence measure	APACS 2.2	FCS	iQuanta
8	Local confidence survey data			Consultation & Research Team
8	Overall satisfaction	APACS 1.1	FCS	Consultation & Research Team
8	Being kept informed		FCS	Consultation & Research Team
9	Comparative satisfaction of minority ethnic groups	APACS 1.2		Consultation & Research Team
9	Satisfaction of victims of racist incidents	APACS 1.3		Consultation & Research Team
9	MSG user satisfaction data			Consultation & Research Team
9-10	Responding to victims of crime			Citizen Focus Inspector
10	Letters of appreciation, reports of incivility, expression of dissatisfaction			Professional Standards Department
11	Responding to public contact (inc call handling data)			Call Management

## An active presence in every neighbourhood

12	Rowdy and nuisance behaviour		FCS	Business Objects
12	Vehicle nuisance/Inappropriate vehicle use		FCS	Business Objects
13	Safer Neighbourhood Teams			CARM team & Personnel
14	Criminal damage		FCS	Business Objects

## Catching criminals and managing offenders

15	All crime and sanction detections		FCS	Business Objects
16	Serious violent crime, sanction detections and OBJT rate	APACS 5.1&6.1	FCS	Business Objects
17	Assault with less serious injury	APACS 5.3	FCS	Business Objects
18	Serious acquisitive crime, sanction detections and OBJT rate	APACS 5.2&6.2	FCS	Business Objects
19	Serious acquisitive crime breakdown			Business Objects
20	Gun and knife crime	APACS5.5&5.6		Business Objects
20	Serious sexual crime OBJT rate	APACS 6.4		Criminal Justice Department
20	Murder offences incl domestic murders	APACS5.4	FCS	Business Objects
20	FIU1 submission levels		FCS	Force Intelligence
20	PPO convictions	APACS 10.1	FCS	Criminal Justice Department
20	Class A drugs sanction detections		FCS	Business Objects
20	Drug seizures			Performance Review Team
20	Organised Crime Groups		FCS	7 OCU performance team

## Protecting our communities

21	Domestic violence and abuse arrest & NFA rates		FCS	Business Objects
21	Repeat incidents of domestic violence cases reviewed at MARAC	APACS14.1		Special Investigations Department
21	Hate crime detection rate		FCS	Business Objects
22	Road traffic casualties	APACS 9.1	FCS	8 OCU performance team
23	Road traffic offences			8 OCU performance team

## Making the most of our resources

24	Police officer sickness	APACS 13.1	FCS	PRT - Delphi + Personnel - Staffing Figures
24	Police staff sickness	APACS 13.2		PRT - Delphi + Personnel - Staffing Figures
25	Overdue PDRs			Personnel
26	Budget spend	APACS12.1	FCS	Finance
26	Efficiency savings		FCS	Finance
26	Specialist support to TO			7 and 8 OCU performance teams

## Equipping our team to deliver

27	Financial awareness training		FCS	Training Department
27	Preparing for frontline supervision		FCS	Training Department
27	Mobile data			Not yet available
27	Minority ethnic officer recruitment	APACS 3.1		Personnel
27	Female officer representation	APACS 3.2		Personnel

Year to date performance targets matrix

	Target	Actual	Central	Isle of Wight	North & East	Portsmouth	Southampton	Western
<b>Providing an excellent service</b>								
Confidence in local police	>51.3%	52.0%	This is a Force measure					
Overall satisfaction (data for rolling 12 months)	>65.0%	67.0%	69.0%	69.0%	66.0%	66.0%	62.0%	69.0%
<b>An active presence in every neighbourhood</b>								
Rowdy & nuisance behaviour	62966	53167	10096	3372	9458	9026	12401	8814
	OCU specific targets		11653	4484	12151	9598	14822	10258
Vehicle nuisance / inappropriate vehicle use	12551	8518	2001	630	1776	823	1645	1643
	OCU specific targets		2918	839	2551	1082	2372	2790
Reduce criminal damage	28701	24276	5298	1761	4800	3146	4953	4318
	OCU specific targets		6328	2104	5516	3891	5562	5302
<b>Catching criminals &amp; managing offenders</b>								
All crime	136261	120585	25159	7737	22927	19415	24326	21021
	OCU specific targets		27768	8884	25798	21239	28581	23992
All crime SD	>25%	27.2%	25.1%	34.0%	27.7%	28.7%	27.0%	25.8%
	OCU specific targets		25.0%	30.0%	25.5%	25.5%	25.0%	25.0%
Serious violent crime	760	755	128	56	134	126	202	109
	OCU specific targets		144	53	121	153	197	93
Serious violent crime SD	>50%	54.0%	67.2%	51.8%	57.5%	42.9%	48.5%	58.7%
	OCU specific targets		57.0%	60.0%	56.0%	41.0%	45.0%	50.0%
Assault with less serious injury	11564	11710	2391	752	1895	2203	2664	1805
	OCU specific targets		2433	814	2050	1672	2725	1871
Serious sexual offences (OBTJ)	Data being developed		This is a Force measure					
Serious acquisitive crime	18777	15372	3081	627	2997	2612	3129	2926
	OCU specific targets		3430	770	3681	3305	4099	3492
Serious acquisitive crime SD	>15%	11.6%	10.0%	15.5%	11.2%	13.3%	12.0%	11.0%
Class A drugs SD	>335	443	23	25	178	47	92	78
	OCU specific targets		41.9	33.5	67.1	67.1	83.8	41.9
Organised crime group (OCG) - disruptions	>21	32	Owned by Crime OCU					

## Year to date performance targets matrix

	Target	Actual	Central	Isle of Wight	North & East	Portsmouth	Southampton	Western
<b>Protecting our communities</b>								
Domestic crimes arrest rate	>80%	79.2%	76.5%	79.0%	81.4%	81.2%	80.3%	77.4%
Hate crime SD	>45%	49.1%	47.4%	44.2%	53.7%	47.7%	49.7%	48.3%
Road traffic casualties	<669	691	Owned by Operations OCU					
<b>Making the most of our resources</b>								
Police officer sickness *	<6.29		No data available for January profile					
Police staff sickness *	<6.29		No data available for January profile					
Budget spend	75%	72%	74%	74%	75%	73%	75%	73%
Efficiency savings 2008-2011 (£m)	33	25.7	This is a Force measure					
<b>Equipping our staff to deliver</b>								
Financial awareness training			Data not suitable for matrix					
Preparing for frontline supervision			Data not suitable for matrix					
Mobile data			Data not suitable for matrix					
<b>Force Total - targets achieved</b>	<b>14</b>		<b>12</b>	<b>10</b>	<b>13</b>	<b>12</b>	<b>12</b>	<b>12</b>

### Notes to be read in conjunction with matrices

#### All citizen focus data

#### OBTJ

#### Road traffic casualties

#### Budget spend

#### Efficiency savings

#### SD

#### Sickness data

#### OCU specific targets

Based on "completely or very satisfied"

Offenders Brought To Justice - current data is to

November 2009

All data until

31/12/2009

Data is always one month in arrears

For information on this target see page 26 of this Profile

Sanction detections

Force Actual = total for ALL officers/police staff - including those not in OCU

OCU specific targets are rounded to 1 decimal place; the actual figure

may therefore seem the same but appear amber due to this rounding

## Monthly performance targets matrix

This matrix is based on monthly data compared to Force targets

	Target	Actual	Central	Isle of Wight	North & East	Portsmouth	Southampton	Western
<b>An active presence in every neighbourhood</b>								
Rowdy & nuisance	6379	4257	746	242	876	679	1027	687
	OCU specific targets		1181	454	1231	972	1502	1039
Vehicle nuisance / inappropriate vehicle use	1272	542	106	40	118	59	108	111
	OCU specific targets		296	85	258	110	240	283
Reduce criminal damage	2908	1969	405	127	397	261	434	345
	OCU specific targets		641	213	559	394	563	537
<b>Catching criminals &amp; managing offenders</b>								
All crime	13804	10267	2027	522	1989	1681	2245	1803
	OCU specific targets		2813	900	2614	2152	2895	2431
All crime (SD)	25.0%	28.7%	26.5%	41.2%	29.4%	31.0%	27.3%	26.2%
	OCU specific targets		25.0%	30.0%	25.5%	25.5%	25.0%	25.0%
Serious violent crime	77	57	8	4	10	9	17	9
	OCU specific targets		14.6	5.3	12.2	15.5	19.9	9.5
Serious violent crime SD	>50%	57.9%	112.5%	25.0%	40.0%	33.3%	52.9%	77.8%
	OCU specific targets		57.0%	60.0%	56.0%	41.0%	45.0%	50.0%
Assault with less serious injury	1172	1074	204	60	162	227	251	170
	OCU specific targets		246	82	208	169	276	190
Serious acquisitive crime	1902	1388	220	45	262	210	381	270
	OCU specific targets		347	78	373	335	415	354
Serious acquisitive crime SD	>15%	9.1%	7.7%	11.1%	7.3%	8.6%	8.4%	13.0%
Serious sexual offences (OBTJ)	Data being developed		This is a Force measure					
Class A drugs SD	>34	74	2	2	47	4	18	1
<b>Protecting our communities</b>								
Domestic crimes arrest rate	>80%	76.8%	76.8%	78.9%	82.4%	77.9%	73.7%	73.5%
Hate crime SD	>45%	43.7%	31.3%	60.0%	73.3%	52.6%	38.2%	21.4%
<b>Making the most of our resources</b>								
Police officer sickness	<0.625		No data available for January profile					
Police staff sickness	<0.625		No data available for January profile					
<b>Force Total - targets achieved</b>	<b>10</b>		<b>9</b>	<b>9</b>	<b>11</b>	<b>8</b>	<b>10</b>	<b>9</b>

## Hampshire Constabulary Policing Pledge Scorecard

Pledge	YTD 2009/2010
--------	------------------

Percentage of respondents tending to 'agree' or 'strongly agree' that: 'The police and local council are dealing with the anti-social behaviour and crime issues that matter in this area'	52.0%
--	-------

### Pledge 1 - Treat people fairly with dignity and respect, ensuring they have fair access to our services

Percentage of respondents answering 'strongly agree' or 'tend to agree' when asked 'The police in this area treat everyone fairly regardless of who they are'	67.6%
---	-------

### Pledge 2 - Help promote our dedicated Safer Neighbourhoods Teams to the local community, including where they live, how to contact them and how to work with them

Measure under development - dip sampling of media/communications to be carried out

### Pledge 3 - Ensure we are visible in our neighbourhoods at times when we will be most effective and when communities need us most. Safer Neighbourhoods teams will spend at least 80% of their time visibly working in neighbourhoods, tackling the most pressing priorities

Safer Neighbourhood Team abstractions	See
Safer Neighbourhood Team vacancy rate	In p

### Pledge 4 - Respond to every message directed to every Safer Neighbourhood Team within 24 hours and, where necessary, provide a more detailed response as soon as we can

Measure under development - dip sampling of media/communications to be carried out

### Pledge 5 - Aim to answer 999 calls within 10 seconds, deploy to emergencies immediately and give an estimated time to provide assistance to callers as safely and quickly as possible, aiming to get to them within 15 minutes

No. of 999 calls	215,861
%age of 999 calls answered within 10 seconds	93.0%
%age of Grade 1 calls attended within 15 minutes	89.4%

### Pledge 6 - Answer all non emergency calls promptly. If attendance is needed, agree with the caller an acceptable time to attend

No of non emergency calls	646,251
%age of non emergency calls answered within 10 seconds	89.5%
Scheduling pilot permanent reporting in progress	See

### Pledge 7 - Create opportunities to meet them at least once a month to agree or update neighbourhood priorities. Arrange regular meetings, street briefings, mobile police station visits and similar by keeping beat web pages up to date and online postcode search to our communities so that they can be kept up to date

Measure under development - dip sampling of media/communications to be carried out

### Pledge 8 - Provide monthly updates on what action we and our partners are taking to make neighbourhoods safer and how the force is performing

Regular neighbourhood performance data is published on the Internet	5 times
Measure under development - other monitoring to be carried out	

### Pledge 9 - Agree with victims of crime how often they would like to be kept informed of progress in their case and for how long. Victims have the right to be kept informed at least every month if they wish and for as long as is reasonable

Satisfaction of victims with respect to being kept informed (very / fairly satisfied)	57.0%
% where the victim was has been updated on a monthly basis	98.0%
Compliance with victims contact as part of the Victims' Code	See

### Pledge 10 - Acknowledge any dissatisfaction with the service brought to our attention within 24 hours of it being reported and ensure that appropriate steps are taken to resolve concerns

Reports of incivility	140
-----------------------	-----

**British Crime Survey Confidence Data**

SPI 2.2 Force Target

This data is updated by iQuanta approximately every quarter, it relates to data gathered in the 12 months up to the month shown.

**National Public Confidence Measure**

Sep-09	
Hampshire	<b>52.0%</b>
MSG Position	<b>3 of 8</b>
MSG average	50.7%

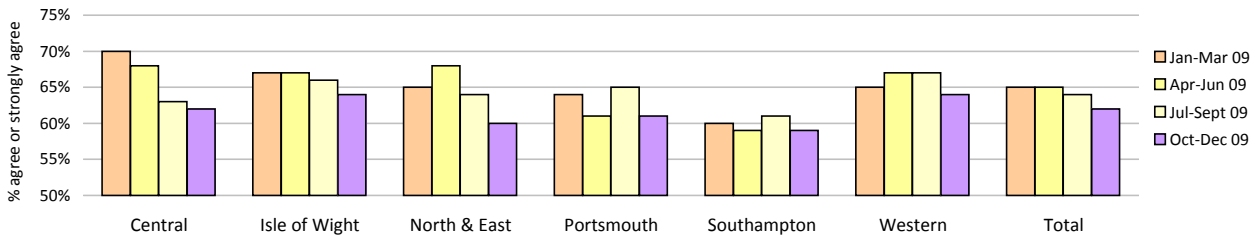
This data is based on 'The police and local council are dealing with the anti-social behaviour and crime issues that matter in this area'  
 The Home Office has set a target to achieve a 12% improvement by 2012 against the baseline of 47.3%  
 This year's required improvement is 4%

**Local Confidence Survey Data**

Figures relate to the percentage of respondents who agree or strongly agree with the question.  
 Hampshire's local surveys have a confidence level of +/-4%. This means that changes of less than 4% may not reflect a real change in performance.

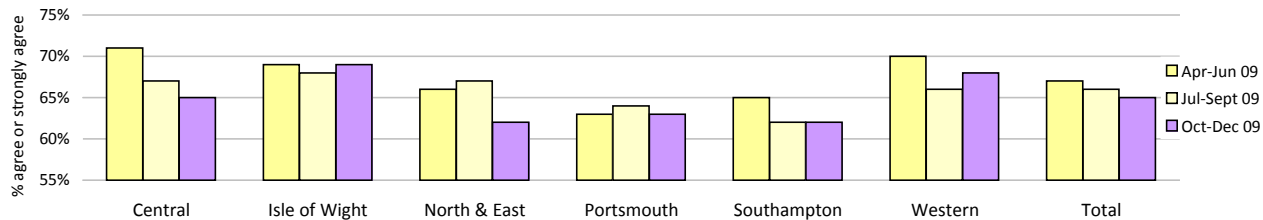
**The police and local council are dealing with the anti-social behaviour and crime issues that matter in this area**

	Central	Isle of Wight	North & East	Portsmouth	Southampton	Western	Total	No. Surveys
January - March 2009	70%	67%	65%	64%	59%	65%	<b>65%</b>	3594
April - June 2009	68%	67%	68%	61%	59%	67%	<b>65%</b>	3591
July - September 2009	63%	66%	64%	65%	61%	67%	<b>64%</b>	8128
October - December 2009	62%	64%	60%	61%	59%	64%	<b>62%</b>	3822



**The police are dealing with the things that matter locally**

	Central	Isle of Wight	North & East	Portsmouth	Southampton	Western	Total	No. Surveys
April - June 2009	71%	69%	66%	63%	65%	70%	<b>67%</b>	3591
July - September 2009	67%	68%	67%	64%	62%	66%	<b>66%</b>	8128
October - December 2009	65%	69%	62%	63%	62%	68%	<b>65%</b>	3822



**Overall satisfaction (user satisfaction survey results)**

SPI 1.1 Force Target

Rolling 12 months data relates to: Feb 09 - Jan 10; rolling 3 months data relates to Nov 09 - Jan 10

Overall satisfaction includes burglary, vehicle crime, violent crime and minor injury RTCs

Target 65%	Central	Isle of Wight	North & East	Portsmouth	Southampton	Western	Total	No. Surveys
Rolling 12 months	69%	69%	66%	66%	<b>62%</b>	69%	<b>67%</b>	8471
Rolling 3 months	74%	72%	72%	66%	68%	74%	<b>71%</b>	1971

**Being kept informed (user satisfaction survey results)**

Rolling 12 months data relates to: Feb 09 - Jan 10; rolling 3 months data relates to Nov 09 - Jan 10

Being kept informed includes burglary, vehicle crime, violent crime and minor injury RTCs

	Central	Isle of Wight	North & East	Portsmouth	Southampton	Western	Total	No. Surveys
Rolling 12 months	60%	61%	56%	54%	53%	60%	<b>57%</b>	8186
Rolling 3 months	61%	70%	59%	52%	61%	65%	<b>61%</b>	1902

## Providing an excellent service

### Comparative satisfaction of minority ethnic groups

SPI 1.3

Data relates to interviews which took place Nov 09 - Jan 10

These figures are for overall satisfaction for burglary, vehicle crime, violent crime, minor injury RTCs and racist incidents

	Completely and very satisfied	Completely, very and fairly satisfied
White	67.2%	84.5%
Minority Ethnic	56.6%	78.7%

### Satisfaction of victims of racist incidents

SPI 1.2

These figures relate to interviews which took place Jan - Dec 09; these will be updated quarterly

Racist incident overall satisfaction = % completely or very satisfied

	Central	Isle of Wight	North & East	Portsmouth	Southampton	Western	Total
%	55%	57%	54%	66%	47%	50%	<b>54%</b>
Number of surveys	31	7	35	44	60	24	<b>201</b>

### MSG information for user satisfaction

iQuanta data for MSG for the 12 months up to September 09 (iQuanta calculate satisfaction % based on those responding that they are completely, very or fairly satisfied)

	Previous MSG position	Current MSG position	Change		Previous MSG position	Current MSG position	Change
<u>Vehicle crime</u>				<u>Burglary</u>			
Ease of contact	2/8	3/8	↓	Ease of contact	3/8	4/8	↓
Actions taken	4/8	4/8	↔	Actions taken	4/8	6/8	↓
Follow up	4/8	4/8	↔	Follow up	1/8	1/8	↔
Treatment	6/8	5/8	↑	Treatment	3/8	4/8	↓
OVERALL	4/8	4/8	↔	OVERALL	2/8	3/8	↓
<u>Violent crime</u>				<u>RTC (minor injury)</u>			
Ease of contact	2/8	2/8	↔	Ease of contact	4/8	3/8	↑
Actions taken	2/8	3/8	↓	Actions taken	1/8	2/8	↓
Follow up	6/8	5/8	↑	Follow up	4/8	2/8	↑
Treatment	3/8	3/8	↔	Treatment	3/8	3/8	↔
OVERALL	3/8	2/8	↑	OVERALL	3/8	3/8	↔
<u>All users (excluding racist incidents)</u>							
Ease of contact	1/8	2/8	↓				
Actions taken	4/8	4/8	↔				
Follow up	3/8	3/8	↔				
Treatment	3/8	4/8	↓				
OVERALL	3/8	3/8	↔				

### Responding to victims of crime

Pledge Point 9

#### Summary results of Dip-sample Victim Code Compliance checks

(latest month for available data followed by YTD)

% where victim was informed within 5 days of an investigation being closed

	Central	Isle of Wight	North & East	Portsmouth	Southampton	Western	Crime	Force
December 2009	40%	100%	100%	100%	100%	100%	100%	90%
YTD	92%	100%	100%	99%	100%	99%	100%	98%

% where the victim has been updated on a monthly basis (if applicable)

	Central	Isle of Wight	North & East	Portsmouth	Southampton	Western	Crime	Force
December 2009	100%	100%	100%	100%	100%	100%	100%	100%
YTD	99%	95%	92%	99%	100%	100%	100%	98%

% where the victim was notified upon filing (if applicable)

	Central	Isle of Wight	North & East	Portsmouth	Southampton	Western	Crime	Force
December 2009	95%	100%	100%	100%	100%	100%	100%	99%
YTD	97%	98%	96%	99%	100%	100%	100%	98%

Note: Victim Code Compliance data is published one month in arrears

Note: Absence of data for Operations OCU - the only crime investigations that are retained for resolution by 8 OCU officers are public order or drug offences where the victim is 'The State'. Other crimes are transferred to 'TO' OCU's for any further investigation required. Road traffic collisions resulting in death could be included but this is a small sample. The option to dip-sample other RTCs (minor and serious injury) for contact with injured or aggrieved parties could be used but these are not within the requirements of the Victims' Code. This would only include RPU in the sample and not other 8 OCU teams

## Providing an excellent service

### Victim support status for crimes

YTD to January 2010	Central	Isle of Wight	North & East	Portsmouth	Southampton	Western	Total	Total %
Victim informed of VSS accepted	2391	651	2366	1751	3214	2223	<b>12596</b>	<b>10.45%</b>
Victim informed of VSS declined	16241	4612	14281	11197	15341	12687	<b>74359</b>	<b>61.67%</b>
VSS aware	628	150	442	230	289	922	<b>2661</b>	<b>2.21%</b>
Victimless crime	5881	2251	5627	5769	5167	5152	<b>29847</b>	<b>24.75%</b>
Not stated	17	73	210	468	315	35	<b>1118</b>	<b>0.93%</b>
<b>Total crimes</b>	<b>25158</b>	<b>7737</b>	<b>22926</b>	<b>19415</b>	<b>24326</b>	<b>21019</b>	<b>120581</b>	<b>N/A</b>
% referred	<b>12.00%</b>	<b>10.35%</b>	<b>12.25%</b>	<b>10.20%</b>	<b>14.40%</b>	<b>14.96%</b>	<b>12.65%</b>	<b>N/A</b>

Month of January 2010	Central	Isle of Wight	North & East	Portsmouth	Southampton	Western	Total	Total %
Victim informed of VSS accepted	181	75	200	131	269	209	<b>1065</b>	<b>10.37%</b>
Victim informed of VSS declined	1309	306	1158	914	1379	1055	<b>6121</b>	<b>59.62%</b>
VSS aware	49	10	31	15	34	65	<b>204</b>	<b>1.99%</b>
Victimless crime	487	119	483	495	438	439	<b>2461</b>	<b>23.97%</b>
Not stated	1	12	117	126	125	35	<b>416</b>	<b>4.05%</b>
<b>Total crimes</b>	<b>2027</b>	<b>522</b>	<b>1989</b>	<b>1681</b>	<b>2245</b>	<b>1803</b>	<b>10267</b>	<b>N/A</b>
% referred	<b>11.35%</b>	<b>16.28%</b>	<b>11.61%</b>	<b>8.69%</b>	<b>13.50%</b>	<b>15.20%</b>	<b>12.36%</b>	<b>N/A</b>

### Letters of appreciation

	Central	Isle of Wight	North & East	Portsmouth	Southampton	Western	Crime	Operations	Other	Total
April 2009	9	5	13	27	0	5	5	13	11	<b>88</b>
May 2009	10	11	13	0	3	11	2	6	31	<b>87</b>
June 2009	9	13	12	3	7	11	15	3	19	<b>92</b>
July 2009	21	7	24	10	3	7	11	2	18	<b>103</b>
August 2009	21	11	13	6	4	11	13	41	23	<b>143</b>
September 2009	19	9	8	10	1	7	17	6	6	<b>83</b>
October 2009	9	6	12	6	10	7	0	11	0	<b>61</b>
November 2009	13	5	15	10	1	9	0	7	3	<b>63</b>
December 2009	7	4	18	0	21	1	0	0	6	<b>57</b>
<b>Total</b>	<b>118</b>	<b>71</b>	<b>128</b>	<b>72</b>	<b>50</b>	<b>69</b>	<b>63</b>	<b>89</b>	<b>117</b>	<b>777</b>

Note: These figures are published one month in arrears

### Reports of incivility

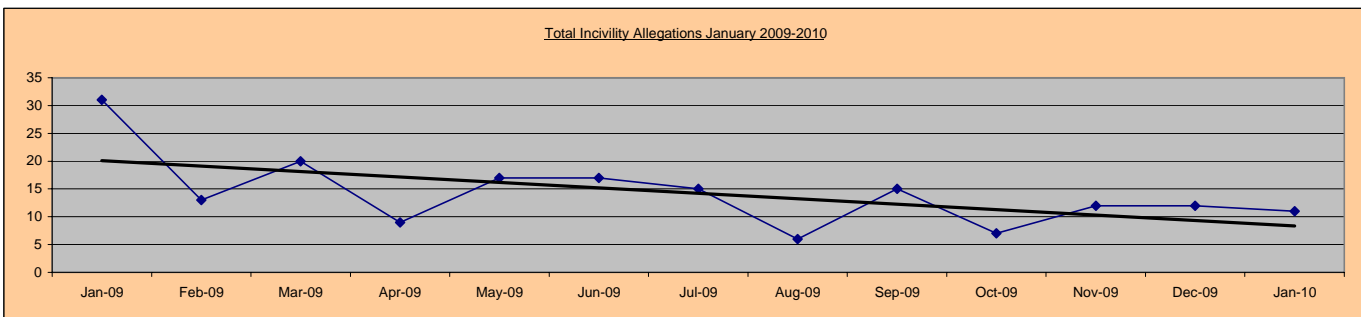
Pledge Point 10

	Central	Isle of Wight	North & East	Portsmouth	Southampton	Western	Crime	Operations	Other	Total
April 2009	2	3	1	3	0	2	0	6	0	<b>17</b>
May 2009	2	4	5	1	2	3	0	1	1	<b>19</b>
June 2009	7	2	1	0	0	3	1	4	0	<b>18</b>
July 2009	1	2	1	3	1	2	3	5	0	<b>18</b>
August 2009	0	1	1	0	4	0	3	0	0	<b>9</b>
September 2009	0	1	2	7	3	1	2	1	0	<b>17</b>
October 2009	1	0	1	0	3	0	0	1	1	<b>7</b>
November 2009	1	1	1	2	1	2	0	4	0	<b>12</b>
December 2009	4	2	0	1	2	2	1	0	0	<b>12</b>
January 2010	4	0	2	1	0	1	0	2	1	<b>11</b>
<b>Total</b>	<b>22</b>	<b>16</b>	<b>15</b>	<b>18</b>	<b>16</b>	<b>16</b>	<b>10</b>	<b>24</b>	<b>3</b>	<b>140</b>

NOTE: OCU complaints totals may include complaints regarding officers who are serving within the area but are not located at that OCU

NOTE: Data/figures may change due to additional or new information and there may be multiple allegations per complaint

By month	Mar 09	Apr 09	May 09	Jun 09	Jul 09	Aug 09	Sep 09	Oct 09	Nov 09	Dec 09	Jan 10
Incivility	20	9	17	17	15	6	15	7	12	12	11



This graph shows the downward trend for the volume of incivility allegations. The "Linear (incivility)" shows the trajectory of this downward trend

### Allegations and their resolutions

Data for January 2010

Locally resolved by OCU	69
Locally resolved by PSD	2
Withdrawn	9
Dispensed by IPCC	20
Unsubstantiated	62
Substantiated	5

## Providing an excellent service

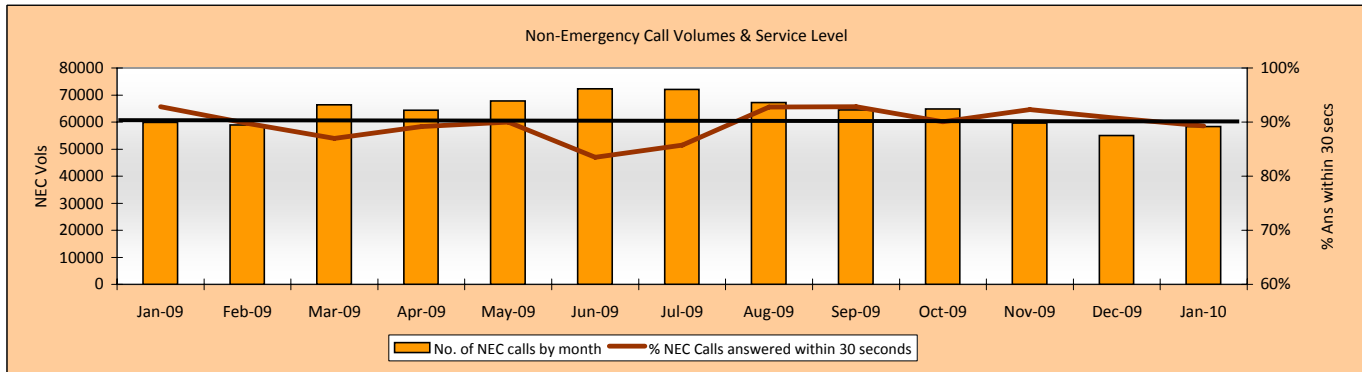
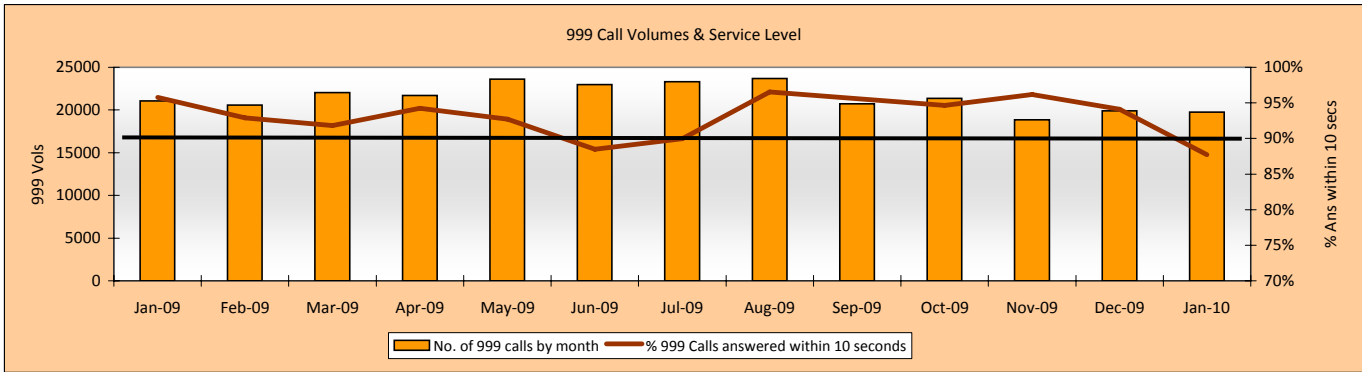
Total	167
-------	-----

## Providing an excellent service

### Responding to public contact

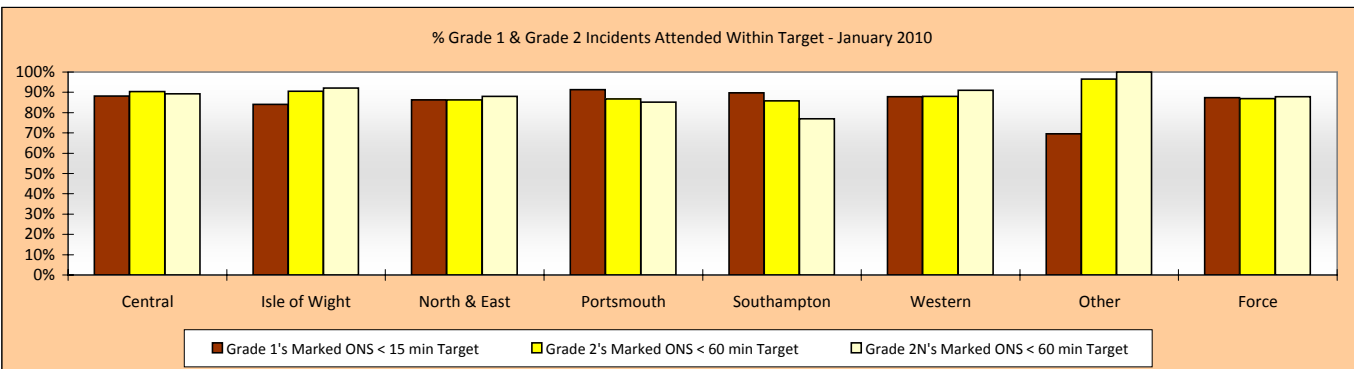
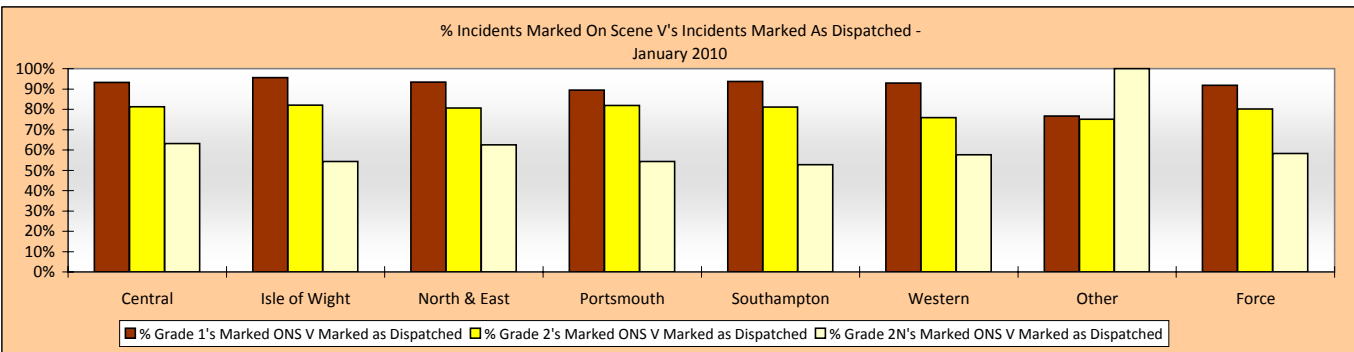
Pledge Points 5 & 6

Call Volumes: Target is to answer 90% of 999 calls within 10 seconds and 90% of Non-Emergency calls within 30 seconds



**Officers Attended Within Target:** This is the time from an incident being created to the 1st Officer being marked on scene on Altaris.

The % of Officers attending within target is based on the number of incidents marked on scene within target vs. the number of incidents marked on scene. If an incident is marked as having an officer dispatched, but is then subsequently not marked as On Scene, these incidents are excluded from the % Attendance.



### Use of Scheduled Appointments

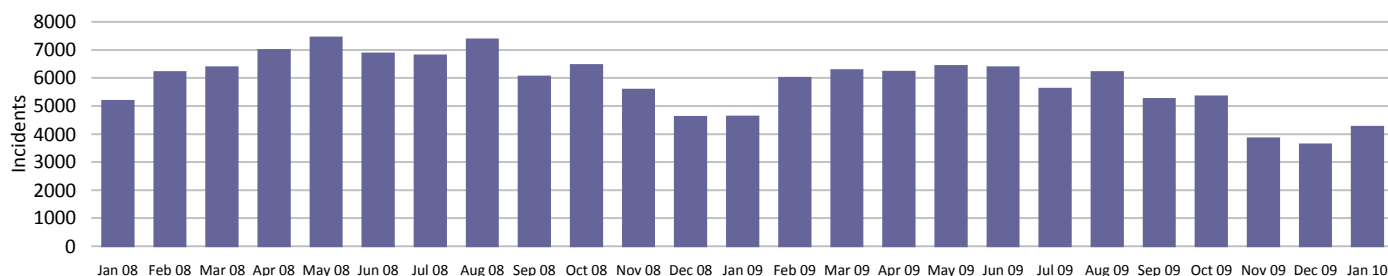
January 2010	Available Slots	Withdrawn by OCU	% Withdrawn	No. Actual Available	Appoint.'s Scheduled	% Appoint.'s Used
Central	748	45	6%	703	273	39%
Isle of Wight	164	20	12%	144	129	90%
North & East	327	85	26%	242	155	64%
Portsmouth	232	36	16%	196	134	68%
Southampton	641	15	2%	626	162	26%
Western	447	246	55%	201	108	54%
Force	2,559	447	17%	2,112	961	46%

# An active presence in every neighbourhood

## Rowdy & nuisance behaviour

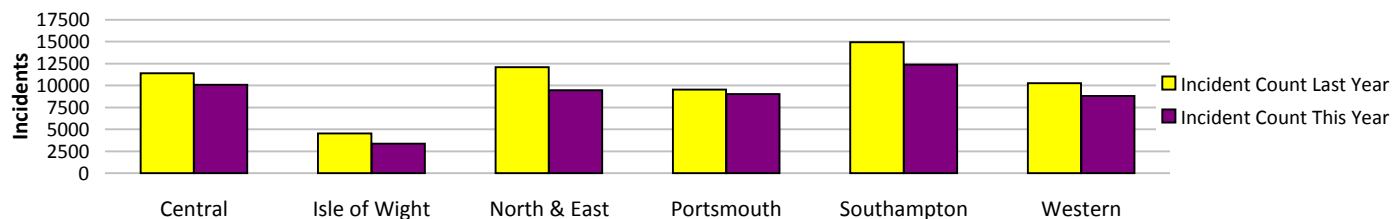
Force Target

This year the decision has been made to use RMS as the source of this data, as opposed to the NSIR return data (the figures published in the 2008/2009 Force Performance Summary used the NSIR data)



Incidents	Central	Isle of Wight	North & East	Portsmouth	Southampton	Western	Total
<b>YTD Incidents</b>	10096	3372	9458	9026	12401	8814	<b>53167</b>
YTD Target	11653	4484	12151	9598	14822	10258	<b>62966</b>
<b>YTD 08/09 Incidents</b>	11400	4525	12108	9546	14956	10276	<b>62811</b>
This month	746	242	876	679	1027	687	<b>4257</b>
% change from 08/09	-11.44%	-25.48%	-21.89%	-5.45%	-17.08%	-14.23%	<b>-15.35%</b>

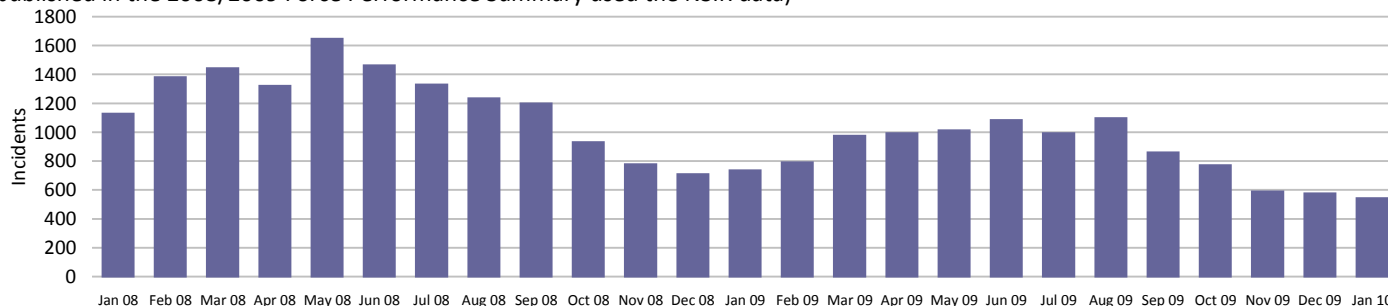
Rowdy & nuisance behaviour relates to occurrence types: Inappropriate use of Fireworks, Rowdy & Inconsiderate, Substance Misuse and Street Drinking



## Vehicle nuisance/inappropriate vehicle use

Force Target

This year the decision has been made to use RMS as the source of this data, as opposed to the NSIR return data (the figures published in the 2008/2009 Force Performance Summary used the NSIR data)



Incidents	Central	Isle of Wight	North & East	Portsmouth	Southampton	Western	Total
<b>YTD Incidents</b>	2001	630	1776	823	1645	1643	<b>8518</b>
YTD Target	2918	839	2551	1082	2372	2790	<b>12551</b>
<b>YTD 08/09 Incidents</b>	2643	685	2199	902	2277	2646	<b>11352</b>
This month	106	40	118	59	108	111	<b>542</b>
% change from 08/09	-24.29%	-8.03%	-19.24%	-8.76%	-27.76%	-37.91%	<b>-24.96%</b>



Note: MSG data is always published a month in arrears.

For an explanation of this data, refer to the Summary on page 2

January 2010

## An active presence in every neighbourhood

### Safer Neighbourhood Teams (SNT)

Policing pledge 3

Abstractions	Central	Isle of Wight	North & East	Portsmouth	Southampton	Western	Total
April 2009	3.02%	2.32%	3.16%	3.80%	1.63%	3.30%	
May 2009	3.33%	2.95%	2.98%	3.01%	1.88%	2.83%	<b>2.86%</b>
June 2009	3.16%	1.15%	2.54%	4.62%	2.77%	3.40%	<b>3.05%</b>
July 2009	3.44%	2.32%	4.02%	4.92%	3.24%	<b>6.46%</b>	<b>4.16%</b>
August 2009	<b>6.66%</b>	<b>16.17%</b>	<b>11.25%</b>	3.13%	2.08%	3.37%	<b>6.40%</b>
September 2009	3.99%	4.03%	4.41%	1.00%	3.16%	3.64%	<b>3.48%</b>
October 2009	2.74%	1.10%	4.80%	0.86%	1.43%	2.19%	<b>2.44%</b>
November 2009	2.27%	0.50%	3.71%	0.36%	2.53%	1.84%	<b>2.12%</b>
December 2009	<b>5.48%</b>	4.33%	4.13%	0.65%	2.09%	1.51%	<b>3.18%</b>
January 2010	Data to be published in February profile						

Target = NPT visible & accessible at least 80% of time (maximum 5% abstractions)

In August 2009 a review of Abstraction data was undertaken to ensure a consistent approach was used across the Force. Prior to this date individual OCUs used slightly differing methodology therefore it is not possible to compare the data for April - July with data from August onwards, or to compare the data for individual OCU's with one another prior to August.

### Safer Neighbourhood Team Personnel

	Inspector	Sergeant	Constable	PCSO	Total
Central	10	23	88	79	<b>200</b>
IOW	1	9	30	26	<b>66</b>
North and East	11	15	75	66	<b>167</b>
Portsmouth	4	10	48	48	<b>110</b>
Southampton	6	13	59	59	<b>137</b>
Western	8	18	82	64	<b>172</b>
<b>Total</b>	<b>40</b>	<b>88</b>	<b>382</b>	<b>342</b>	<b>852</b>

SNT strength by OCU - Police

	Central	Isle of Wight	North & East	Portsmouth	Southampton	Western
Strength	112.42	37.7	97.9	59.4	75.9	104.05

SNT establishment and strength by OCU - PCSOs

	Central	Isle of Wight	North & East	Portsmouth	Southampton	Western
Establishment	74	28	67	50	59	59
Strength	79	25.12	65.2	47.12	58.34	62.78
Vacancies	-5	2.88	1.8	2.88	0.66	-3.78

Note: Personnel Planning are no longer able to provide 'length of service' information due to the implementation of the new organisation structure into Delphi. This has meant that all Staff and Police Officers have a position start date of 8 July 2009

Note: MSG data is always published a month in arrears.

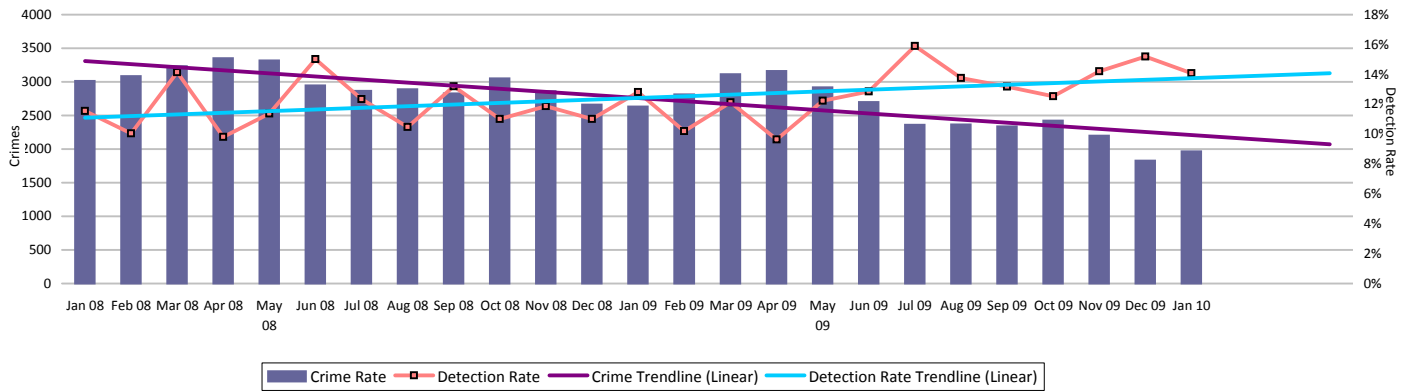
For an explanation of this data, refer to the Summary on page 2

January 2010

# An active presence in every neighbourhood

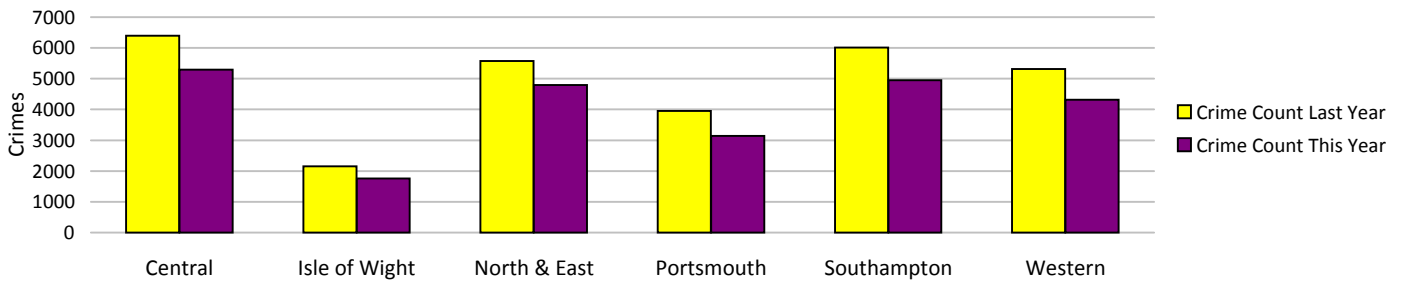
## Criminal damage

Force Target



### Crimes

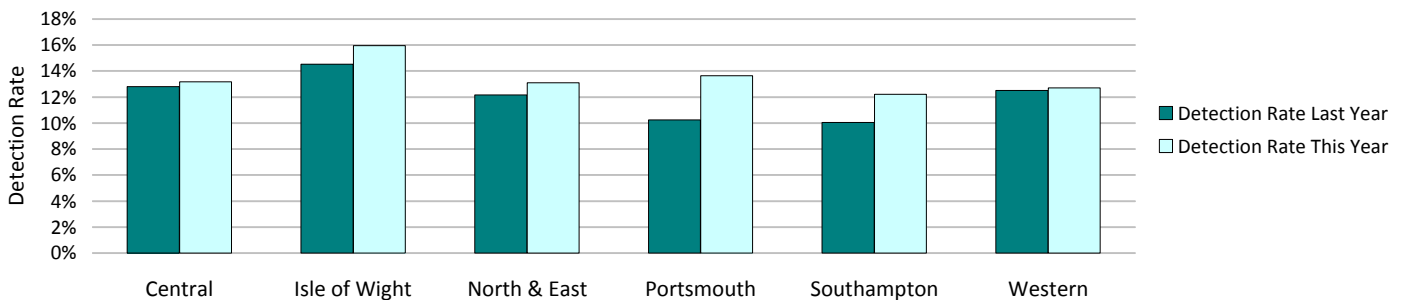
	Central	Isle of Wight	North & East	Portsmouth	Southampton	Western	Total
<b>YTD Crimes</b>	5298	1761	4800	3146	4953	4318	<b>24276</b>
YTD Target	6328	2104	5516	3891	5562	5302	<b>28701</b>
<b>YTD 08/09 Crimes</b>	6395	2155	5580	3955	6017	5314	<b>29416</b>
This month	405	127	397	261	434	345	<b>1969</b>
% change from 08/09	-17.15%	-18.28%	-13.98%	-20.46%	-17.68%	-18.74%	<b>-17.47%</b>
MSG position	11 of 15	11 of 15	8 of 15	9 of 15	12 of 15	10 of 15	<b>8 of 8</b>
OCU actual	2.97	3.59	2.86	4.25	5.70	2.94	<b>3.46</b>
MSG average	2.83	3.34	2.75	4.02	4.41	2.82	<b>3.16</b>



### Detections

	Central	Isle of Wight	North & East	Portsmouth	Southampton	Western	Total
<b>YTD Detection Rate</b>	13.17%	15.96%	13.10%	13.64%	12.21%	12.71%	<b>13.14%</b>
This month	14.57%	23.62%	9.32%	20.69%	12.21%	12.75%	<b>14.07%</b>
<b>YTD 08/09 Detections</b>	12.81%	14.52%	12.17%	10.24%	10.05%	12.51%	<b>11.85%</b>
MSG position	7 of 15	7 of 15	9 of 15	5 of 15	8 of 15	10 of 15	<b>7 of 8</b>
OCU actual	13.26%	14.12%	13.23%	12.84%	11.19%	12.27%	<b>12.65%</b>
MSG average	13.44%	14.33%	14.29%	11.52%	12.09%	13.77%	<b>14.30%</b>

Note: Detections refer to Sanction Detections ONLY



Note: MSG data is always published a month in arrears.

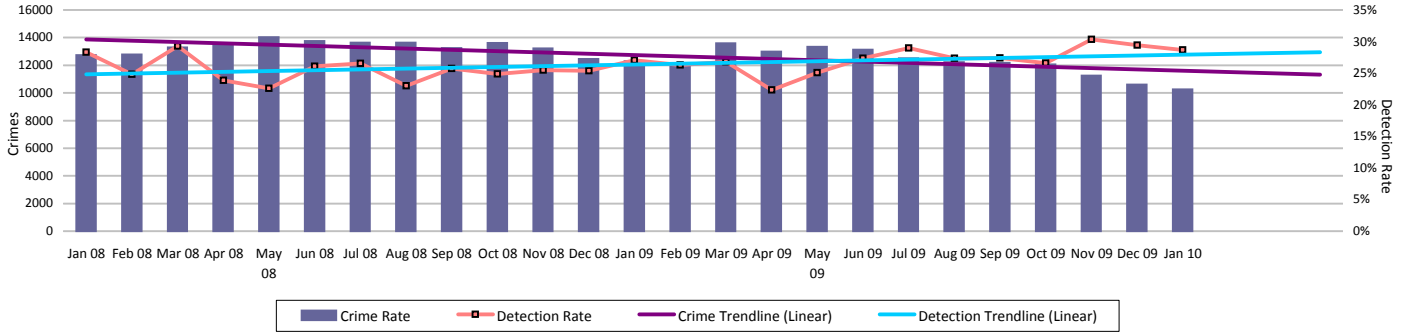
For an explanation of this data, refer to the Summary on page 2

January 2010

# Catching criminals and managing offenders

## All crime

Force Target



Crimes	Central	Isle of Wight	North & East	Portsmouth	Southampton	Western	Total
YTD Crimes	25159	7737	22927	19415	24326	21021	<b>120585</b>
YTD Target	27768	8884	25798	21239	28581	23992	<b>136261</b>
YTD 08/09 Crimes	27132	8827	25294	20813	27756	23613	<b>133435</b>
This month	2027	522	1989	1681	2245	1803	<b>10267</b>
% change from 08/09	-7.27%	-12.35%	-9.36%	-6.72%	-12.36%	-10.98%	<b>-9.63%</b>
MSG position	9 of 15	4 of 15	8 of 15	11 of 15	13 of 15	8 of 15	6 of 8
OCU actual	15.45	13.49	15.09	28.12	29.77	14.44	<b>18.16</b>
MSG average	15.00	15.30	14.43	23.17	25.03	14.18	<b>16.98</b>



Detections	Central	Isle of Wight	North & East	Portsmouth	Southampton	Western	Total
YTD Detection Rate	25.10%	33.97%	27.69%	28.67%	26.98%	25.77%	<b>27.23%</b>
This month	26.54%	41.19%	29.41%	30.99%	27.35%	26.18%	<b>28.68%</b>
YTD 08/09 Detections	24.05%	32.93%	25.94%	25.09%	23.82%	23.57%	<b>25.02%</b>
Detection Targets	25.00%	30.00%	25.50%	25.50%	25.00%	25.00%	<b>25.00%</b>
MSG position	12 of 15	5 of 15	9 of 15	2 of 15	7 of 15	10 of 15	5 of 8
OCU actual	24.57%	33.27%	27.31%	28.49%	26.53%	25.75%	<b>26.87%</b>
MSG average	27.57%	30.07%	28.82%	25.41%	26.31%	26.82%	<b>28.81%</b>

Note: Detections refer to Sanction Detections ONLY

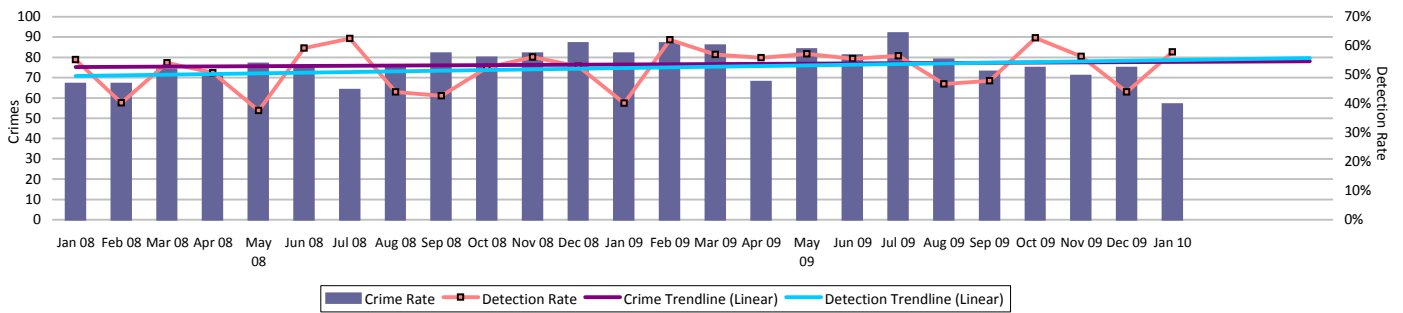


# Catching criminals and managing offenders

## Serious violent crime

SPI 5.1 Force Target

Serious violent crime consists of crimsec codes 1, 2, 4.1-4.4, 4.6, 4.8, 5A, 5B, 5C, 8F, 8H and 37.1



Crimes	Central	Isle of Wight	North & East	Portsmouth	Southampton	Western	Total
<b>YTD Crimes</b>	128	56	134	126	202	109	755
YTD Target	144	53	121	153	197	93	760
<b>YTD 08/09 Crimes</b>	159	50	115	140	189	123	776
This month	8	4	10	9	17	9	57
% change from 08/09	-19.50%	12.00%	16.52%	-10.00%	6.88%	-11.38%	-2.71%
MSG position	10 of 15	2 of 15	14 of 15	8 of 15	2 of 15	2 of 15	6 of 8
OCU actual	0.09	0.09	0.12	0.24	1.18	0.18	0.12
MSG average	0.10	0.13	0.08	0.26	0.28	0.29	0.11



Detections	Central	Isle of Wight	North & East	Portsmouth	Southampton	Western	Total
<b>YTD Detection Rate</b>	67.19%	51.79%	57.46%	42.86%	48.51%	58.72%	54.04%
This month	112.50%	25.00%	40.00%	33.33%	52.94%	77.78%	57.89%
<b>YTD 08/09 Detections</b>	54.72%	70.00%	57.39%	40.71%	44.44%	45.53%	49.61%
Detection Targets	57.00%	60.00%	56.00%	41.00%	45.00%	50.00%	50.00%
MSG position	2 of 15	4 of 15	12 of 15	5 of 15	2 of 15	6 of 15	2 of 8
OCU actual	67.36%	56.52%	54.60%	42.86%	52.00%	57.14%	54.09%
MSG average	55.36%	50.58%	58.45%	40.51%	41.89%	59.22%	47.88%

Note: Detections refer to Sanction Detections ONLY



## Serious Violent offences OBJ

SPI 6.1

Up to and including Nov. 2009

	Recorded Crime		Total OBJs		Hampshire		Rolling Average	
	Month	RA	Month	RA	Month	RA	MSG	E&W
Attempted murder	5	12	0	1	0.0%	8.3%	14.3%	20.8%
Death by aggravated vehicle taking	0	0	0	0	0.0%	0.0%	200.0%	108.3%
Causing death by dangerous driving etc	1	13	0	13	0.0%	100.0%	83.0%	82.9%
Homicide and child destruction	2	18	1	17	50.0%	94.4%	110.0%	121.0%
Wounding and GBH without intent	64	909	20	233	31.3%	25.6%	23.0%	19.8%

	Convictions	Caution	TICs	Cannabis Warning	PNDs
Rolling 12 month Average					
Attempted murder	1	0	0	0	0
Death by aggravated vehicle taking	0	0	0	0	0
Causing death by dangerous driving etc	13	0	0	0	0
Homicide and child destruction	17	0	0	0	0
Wounding and GBH without intent	225	0	0	0	0

RA = Rolling Annual  
E&W = England & Wales

\*Caution data not supplied by OCJR

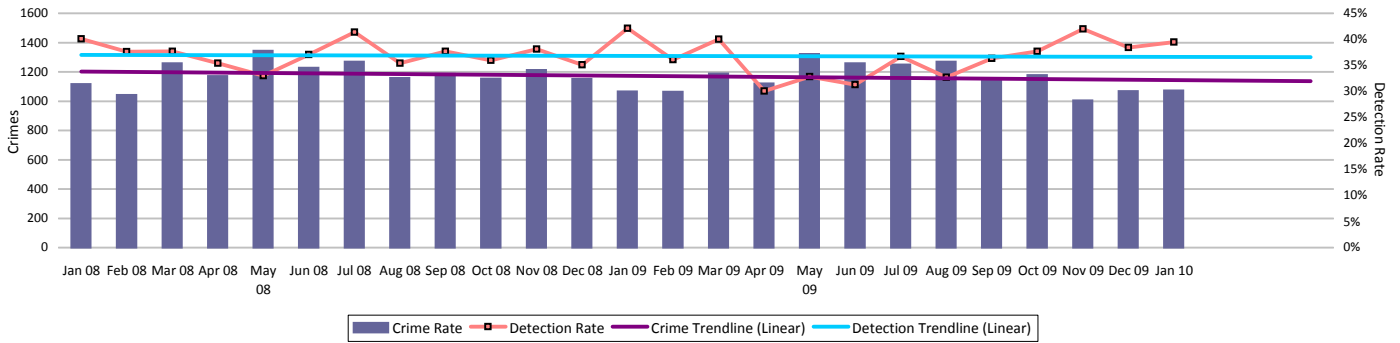
Note: MSG data is always published a month in arrears. For an explanation of this data, refer to the Summary on page 2

# Catching criminals and managing offenders

## Assault with less serious injury

SPI 5.3 Force Target

Assault with less serious injury consists of crimsec codes 8G and 8J

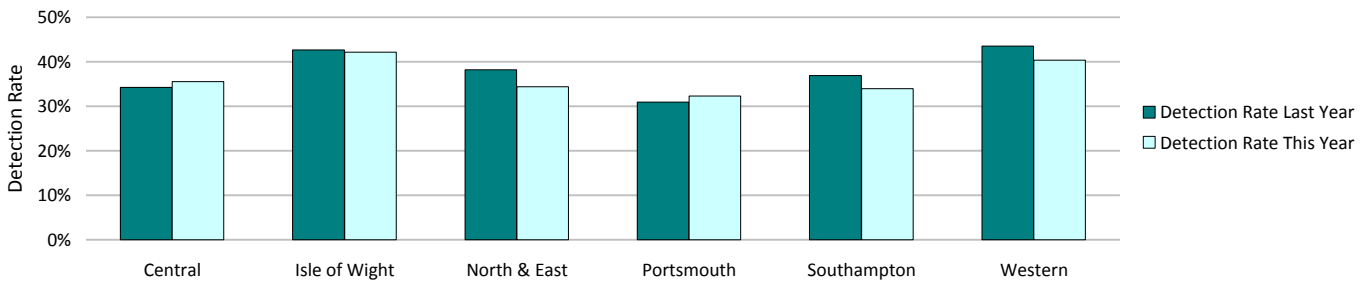


Crimes	Central	Isle of Wight	North & East	Portsmouth	Southampton	Western	Total
<b>YTD Crimes</b>	2391	752	1895	<b>2203</b>	2664	1805	<b>11710</b>
YTD Target	2433	814	2050	1672	2725	1871	<b>11564</b>
<b>YTD 08/09 Crimes</b>	2484	846	2028	1801	2984	1805	<b>11948</b>
This month	204	60	162	227	251	170	<b>1074</b>
% change from 08/09	-3.74%	-11.11%	-6.56%	22.32%	-10.72%	0.00%	<b>-1.99%</b>
MSG position	<b>14 of 15</b>	4 of 15	9 of 15	<b>14 of 15</b>	11 of 15	<b>8 of 15</b>	<b>8 of 8</b>
OCU actual	1.57	1.27	1.15	3.31	3.21	1.22	<b>1.77</b>
MSG average	1.26	1.51	1.12	2.04	2.28	1.27	<b>1.39</b>



Detections	Central	Isle of Wight	North & East	Portsmouth	Southampton	Western	Total
<b>YTD Detection Rate</b>	35.51%	42.15%	34.41%	32.32%	33.93%	40.33%	<b>35.54%</b>
This month	37.25%	46.67%	51.23%	32.16%	33.47%	47.06%	<b>39.48%</b>
<b>YTD 08/09 Detections</b>	34.22%	42.67%	38.17%	30.93%	36.90%	43.49%	<b>37.06%</b>
MSG position	10 of 15	10 of 15	<b>13 of 15</b>	<b>13 of 15</b>	7 of 15	6 of 15	<b>6 of 8</b>
OCU actual	35.53%	42.36%	34.23%	31.87%	35.53%	41.80%	<b>36.04%</b>
MSG average	39.71%	43.82%	40.94%	36.14%	35.22%	38.93%	<b>41.38%</b>

Note: Detections refer to Sanction Detections ONLY



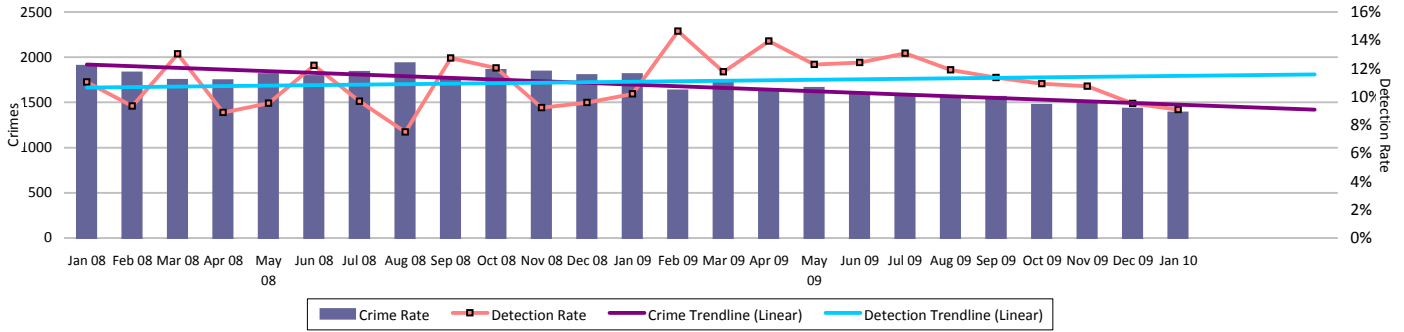
Note: MSG data is always published a month in arrears. For an explanation of this data, refer to the Summary on page 2

# Catching criminals and managing offenders

## Serious acquisitive crime

SPI 5.2 Force Target

Serious acquisitive crime consists of crimsec codes 28, 29, 34A, 34B, 37/2, 45 and 48



Crimes	Central	Isle of Wight	North & East	Portsmouth	Southampton	Western	Total
<b>YTD Crimes</b>	3081	627	2997	2612	3129	2926	<b>15372</b>
YTD Target	3430	770	3681	3305	4099	3492	<b>18777</b>
<b>YTD 08/09 Crimes</b>	3243	760	3574	3355	3878	3398	<b>18208</b>
This month	220	45	262	210	381	270	<b>1388</b>
% change from 08/09	-5.00%	-17.50%	-16.14%	-22.15%	-19.31%	-13.89%	<b>-15.58%</b>
MSG position	<b>5 of 15</b>	<b>1 of 15</b>	<b>7 of 15</b>	<b>2 of 15</b>	<b>5 of 15</b>	<b>7 of 15</b>	<b>2 of 8</b>
OCU actual	2.03	1.13	2.05	3.79	3.85	2.01	<b>2.38</b>
MSG average	2.56	2.17	2.41	4.92	4.73	2.07	<b>3.02</b>



Detections	Central	Isle of Wight	North & East	Portsmouth	Southampton	Western	Total
Target >15%							
<b>YTD Detection Rate</b>	<b>10.00%</b>	<b>15.47%</b>	<b>11.18%</b>	<b>13.28%</b>	<b>11.95%</b>	<b>10.97%</b>	<b>11.59%</b>
This month	<b>7.73%</b>	<b>11.11%</b>	<b>7.25%</b>	<b>8.57%</b>	<b>8.40%</b>	<b>12.96%</b>	<b>9.08%</b>
<b>YTD 08/09 Detections</b>	12.12%	13.82%	8.28%	10.49%	9.10%	10.24%	<b>10.14%</b>
MSG position	<b>12 of 15</b>	<b>8 of 15</b>	<b>11 of 15</b>	<b>4 of 15</b>	<b>9 of 15</b>	<b>12 of 15</b>	<b>4 of 8</b>
OCU actual	10.05%	14.77%	10.77%	14.21%	12.32%	11.71%	<b>11.88%</b>
MSG average	13.01%	14.85%	13.80%	11.93%	13.48%	13.19%	<b>13.42%</b>

Note: Detections refer to Sanction Detections ONLY



## Serious Acquisitive offences OBTJ

SPI 6.2

Up to and including Nov 2009

	Recorded Crime		Total OBTJs		Hampshire		Rolling Average	
	Month	RA	Month	RA	Month	RA	MSG	E&W
Aggravated burglary in a dwelling	6	47	0	11	0.0%	23.4%	19.7%	23.2%
Aggravated vehicle taking	17	235	12	178	70.6%	75.7%	73.7%	73.3%
Burglary in a dwelling	460	5712	70	976	15.2%	17.1%	15.7%	14.5%
Robbery	90	1095	16	248	17.8%	22.7%	23.8%	18.0%
Theft from a vehicle	741	9862	20	384	2.7%	3.9%	7.3%	8.4%
Theft of a motor vehicle	194	2626	23	302	11.9%	11.5%	13.0%	12.9%

	Convictions	Caution	TICs	Cannabis Warnings	PNDs
<b>Rolling 12 month Average</b>					
Aggravated burglary in a dwelling	11	0	0	0	0
Aggravated vehicle taking	160	0	0	0	0
Burglary in a dwelling	574	0	374	0	0
Robbery	242	0	3	0	0
Theft from a vehicle	228	0	100	0	0
Theft of a motor vehicle	246	0	22	0	0

RA = Rolling Annual  
E&W = England & Wales

\*Caution data not supplied by OCJR

## Catching criminals and managing offenders

### Serious acquisitive crime breakdown

#### Robbery

Year to date	Central	Isle of Wight	North & East	Portsmouth	Southampton	Western	Total
Crimes	82	17	143	190	339	107	<b>878</b>
08/09 crimes	95	14	140	190	354	144	<b>937</b>
% change from 08/09	-13.68%	21.43%	2.14%	0.00%	-4.24%	-25.69%	<b>-6.30%</b>
MSG position	4 of 15	1 of 15	11 of 15	4 of 15	9 of 15	7 of 15	<b>3 of 8</b>
Detection rate	40.24%	47.06%	26.57%	25.79%	20.94%	24.30%	<b>25.63%</b>
MSG position	1 of 15	6 of 15	13 of 15	6 of 15	10 of 15	10 of 15	<b>2 of 8</b>
January 2010	Central	Isle of Wight	North & East	Portsmouth	Southampton	Western	Total
Crimes	6	2	9	14	50	3	<b>84</b>
Detection rate	16.67%	100.00%	22.22%	14.29%	18.00%	66.67%	<b>21.43%</b>

#### Dwelling burglary

Year to date	Central	Isle of Wight	North & East	Portsmouth	Southampton	Western	Total
Crimes	934	216	965	810	911	775	<b>4611</b>
08/09 crimes	889	253	1149	1224	794	811	<b>5120</b>
% change from 08/09	5.06%	-14.62%	-16.01%	-33.82%	14.74%	-4.44%	<b>-9.94%</b>
MSG position	5 of 15	2 of 15	8 of 15	4 of 15	5 of 15	6 of 15	<b>2 of 8</b>
Detection rate	14.56%	15.74%	13.47%	20.25%	17.89%	21.29%	<b>17.18%</b>
MSG position	9 of 15	8 of 15	14 of 15	1 of 15	7 of 15	4 of 15	<b>4 of 8</b>
January 2010	Central	Isle of Wight	North & East	Portsmouth	Southampton	Western	Total
Crimes	59	21	92	73	88	82	<b>415</b>
Detection rate	10.17%	0.00%	10.87%	8.22%	12.50%	34.15%	<b>14.70%</b>

#### Vehicle crime

Year to date	Central	Isle of Wight	North & East	Portsmouth	Southampton	Western	Total
Crimes	2065	394	1889	1612	1879	2044	<b>9883</b>
08/09 crimes	2259	493	2285	1941	2730	2443	<b>12151</b>
% change from 08/09	-8.59%	-20.08%	-17.33%	-16.95%	-31.17%	-16.33%	<b>-18.67%</b>
MSG position	8 of 15	1 of 15	6 of 15	7 of 15	5 of 15	12 of 15	<b>2 of 8</b>
Detection rate	6.73%	13.96%	8.84%	8.31%	7.45%	6.36%	<b>7.74%</b>
MSG position	13 of 15	6 of 15	10 of 15	9 of 15	9 of 15	13 of 15	<b>5 of 8</b>
January 2010	Central	Isle of Wight	North & East	Portsmouth	Southampton	Western	Total
Crimes	155	22	161	123	243	185	<b>889</b>
Detection rate	6.45%	13.64%	4.35%	8.13%	4.94%	2.70%	<b>5.29%</b>
Detection numbers	10	3	7	10	12	5	<b>47</b>

#### Theft of a motor vehicle

Year to date	Central	Isle of Wight	North & East	Portsmouth	Southampton	Western	Total
Crimes	499	96	515	327	448	349	<b>2234</b>
MSG position	8 of 15	1 of 15	10 of 15	4 of 15	8 of 15	2 of 15	<b>1 of 8</b>
Detection rate	16.03%	38.54%	16.12%	18.35%	14.96%	20.63%	<b>17.86%</b>
MSG position	11 of 15	2 of 15	10 of 15	5 of 15	10 of 15	2 of 15	<b>4 of 8</b>
January 2010	Central	Isle of Wight	North & East	Portsmouth	Southampton	Western	Total
Crimes	50	9	44	32	39	30	<b>204</b>
Detection rate	16.00%	11.11%	11.36%	21.88%	15.38%	6.67%	<b>14.22%</b>
Detection numbers	8	1	5	7	6	2	<b>29</b>

#### Theft from a motor vehicle

Year to date	Central	Isle of Wight	North & East	Portsmouth	Southampton	Western	Total
Crimes	1566	298	1374	1285	1431	1695	<b>7649</b>
MSG position	7 of 15	2 of 15	6 of 15	5 of 15	5 of 15	13 of 15	<b>3 of 8</b>
Detection rate	3.77%	6.04%	6.11%	5.76%	5.10%	3.42%	<b>4.78%</b>
MSG position	13 of 15	13 of 15	10 of 15	11 of 15	8 of 15	13 of 15	<b>5 of 8</b>
January 2010	Central	Isle of Wight	North & East	Portsmouth	Southampton	Western	Total
Crimes	105	13	117	91	204	155	<b>685</b>
Detection rate	1.90%	15.38%	1.71%	3.30%	2.94%	1.94%	<b>2.63%</b>
Detection numbers	2	2	2	3	6	3	<b>18</b>

Robbery, dwelling burglary and vehicle crime are the component parts of serious acquisitive crime. These individual crime types do not have targets.

## Catching criminals and managing offenders

### Gun crime rate

	Central	Isle of Wight	North & East	Portsmouth	Southampton	Western	Total	MSG position 01 12 08 - 30 11 09
YTD January 2010	31	6	16	14	15	12	94	4 of 8
YTD January 2009	26	3	29	15	21	14	108	
% change from 08/09	19.2%	100.0%	-44.8%	-6.7%	-28.6%	-14.3%	-13.0%	

SPI 5.5

Gun crime figures published reflect the APACS technical definition which includes "where the victim is convinced of the presence of a firearm, even if it is concealed and there is evidence of the suspect's intention to create this impression".

### Knife crime rate

	Central	Isle of Wight	North & East	Portsmouth	Southampton	Western	Total	MSG position 01 10 08 - 30 09 09
YTD January 2010	79	26	117	91	178	71	562	3 of 8
YTD January 2009	121	27	111	99	182	71	611	
% change from 08/09	-34.7%	-3.7%	5.4%	-8.1%	-2.2%	0.0%	-8.0%	

SPI 5.6

**Knife** = knife or other sharp instrument (including broken glass/bottles) piercing the skin or, for threats and attempts, instruments normally capable of piercing the skin. The measure for counting broken glass/bottles has changed for 09-10 with less occurrences being counted by the Home Office. Knife crime figures published reflect the APACS technical definition which includes "where the victim is convinced of the presence of a knife, even if it is concealed and there is evidence of the suspect's intention to create this impression".

### Serious sexual crime OBJT rate

SPI 6.4

The table below shows % of persons brought to justice for serious sexual crimes against the total number of serious sexual crimes

OBJT Crime category	Jun-09	Jul-09	Aug-09	Sep-09	Oct-09	Nov-09	Rolling average
Tier 1: Serious Sexual Offences	35%	11%	9%	34%	21%	49%	31%

### Murder offences

SPI 5.4

	Central	Isle of Wight	North & East	Portsmouth	Southampton	Western	Total
YTD January 2010	4	2	3	2	3	2	16
YTD Domestic Murders 2009/10	1	0	1	0	1	1	4
YTD January 2009	1	1	0	1	4	2	9
YTD Domestic Murders 2008/09	1	1	0	0	3	2	7

### FIU1 submissions

	Central	Isle of Wight	North & East	Portsmouth	Southampton	Western	Total
YTD January 2010	202	184	228	165	221	170	1170
Number of eligible detections	2968	1448	3190	3126	3144	2573	16449
% submission rate	7%	13%	7%	5%	7%	7%	7%

	Central	Isle of Wight	North & East	Portsmouth	Southampton	Western	Total
January 2010	20	14	15	25	25	13	112
Number of eligible detections	202	100	275	277	296	221	1371
% submission rate	10%	14%	5%	9%	8%	6%	8%

Eligible crimes are those covered by Proceeds of Crime Act (POCA)

### Prolific and other Priority Offenders (PPOs) convictions

Number of convictions recorded against identified, prolific and other priority offenders (PPOs)

	Apr-Jun 09	Jul-Sept 09	Oct 2009	Nov 2009	Dec 2009	Jan 2010	YTD
Persistent Young Offenders	260	151	33	22	89	94	649
Priority Prolific Offenders	94	91	25	26	28	27	291
Persistent Priority Prolific Young Off's	14	7	1	0	5	3	30
Young Offenders	555	588	208	198	183	230	1962

### Class A drugs sanction detections

Force Target

	Central	Isle of Wight	North & East	Portsmouth	Southampton	Western	Total
YTD January 2010	23	25	178	47	92	78	443
YTD Target	41.92	33.53	67.07	67.07	83.84	41.92	335.34
January 2010	2	2	47	4	18	1	74

### Drug seizures information

	Central	Isle of Wight	North & East	Portsmouth	Southampton	Western	Total
YTD December 2009	953	1221	706	484	882	457	4703
YTD December 2008	825	841	472	556	518	366	3578
% change from 08/09	15.5%	45.2%	49.6%	-12.9%	70.3%	24.9%	31.4%

Note: This data is produced one month in arrears

There is no data for Portsmouth for December 2009

### Number of Organised Crime Groups (OCGs) disrupted

Force Target

YTD January 2010	2008/2009	2009/2010	YTD Target
Number of OCGs identified and mapped	41	45	
Number of OCGs disrupted or partially disrupted through Crime OCU activity	26	32	21
Number of OCGs subject to tactical activity	96	101	

Note: MSG data is always published a month in arrears. For an explanation of this data, refer to the Summary on page 2

## Protecting our communities

**Domestic violence and abuse** is defined by ACPO as: 'any incidence of threatening behaviour, violence or abuse (psychological, physical, sexual, financial or emotional) between adults, aged 18 and over, who are or have been intimate partners or family members, regardless of gender or sexuality'

### Domestic violence and abuse crime arrest rate

Force Target

Domestic violence arrest rate is based on records where the occurrence has been flagged as a domestic, and has an arrest event or a linked person reason of arrested.

Target >80%

Year to Date	Central	Isle of Wight	North & East	Portsmouth	Southampton	Western	Total
Domestic crimes	1733	544	1268	1181	1673	1222	<b>7621</b>
Domestic crime detection rate	33.47%	43.93%	40.69%	38.27%	33.23%	40.43%	<b>37.23%</b>
Domestic crime arrests	1326	430	1032	959	1344	946	<b>6037</b>
Domestic crime arrest rate	76.51%	79.04%	81.39%	81.20%	80.33%	77.41%	<b>79.22%</b>

Month	Central	Isle of Wight	North & East	Portsmouth	Southampton	Western	Total
Domestic crimes	177	57	119	136	175	136	<b>800</b>
Domestic crime detection rate	35.03%	49.12%	47.90%	39.71%	37.71%	36.76%	<b>39.63%</b>
Domestic crime arrests	136	45	98	106	129	100	<b>614</b>
Domestic crime arrest rate	76.84%	78.95%	82.35%	77.94%	73.71%	73.53%	<b>76.75%</b>

### Police No Further Action (NFA) Rate

Incidents classified as Domestic Violence crimes

Year to Date	Central	Isle of Wight	North & East	Portsmouth	Southampton	Western	Total
Domestic Crimes	This data is currently not available. Work is continuing to provide this data in the coming months.						
Domestic Crimes NFA'd							
Domestic Crimes NFA Rate							

Month	Central	Isle of Wight	North & East	Portsmouth	Southampton	Western	Total
Domestic Crimes	This data is currently not available. Work is continuing to provide this data in the coming months.						
Domestic Crimes NFA'd							
Domestic Crimes NFA Rate							

### Repeat incidents of domestic violence cases reviewed at MARAC

SPI 14.1

A Multi Agency Risk Assessment Conference (MARAC) meet to manage the highest risk domestic abuse cases. A 'case' = a victim & perpetrator(s) being reviewed at the same MARAC. Once a case has been to MARAC, it remains flagged as a MARAC case for 12 mths after the most recent MARAC review. A repeat case is when a case reviewed at MARAC has also been reviewed at the same MARAC within the preceding 12 mths. For further information on this measure please refer to Home Office Guidance on Performance Indicators for Policing & Community Safety 09/10.

Year to Date	Central	Isle of Wight	North & East	Portsmouth	Southampton	Western	Total
Number of cases reviewed at MARAC	300	188	689	331	371	352	<b>2231</b>
Repeat cases reviewed at MARAC	72	69	236	101	145	89	<b>712</b>
% Repeat cases	24.0%	36.7%	34.3%	30.5%	39.1%	25.3%	<b>31.9%</b>

### Hate crime detection rate

Force Target

Target >45%

Year to Date	Central	Isle of Wight	North & East	Portsmouth	Southampton	Western	Total
Incidents	266	60	235	389	592	213	<b>1755</b>
Crimes	192	43	164	264	388	149	<b>1200</b>
Detections	91	19	88	126	193	72	<b>589</b>
Detection Rate	47.40%	44.19%	53.66%	47.73%	49.74%	48.32%	<b>49.08%</b>

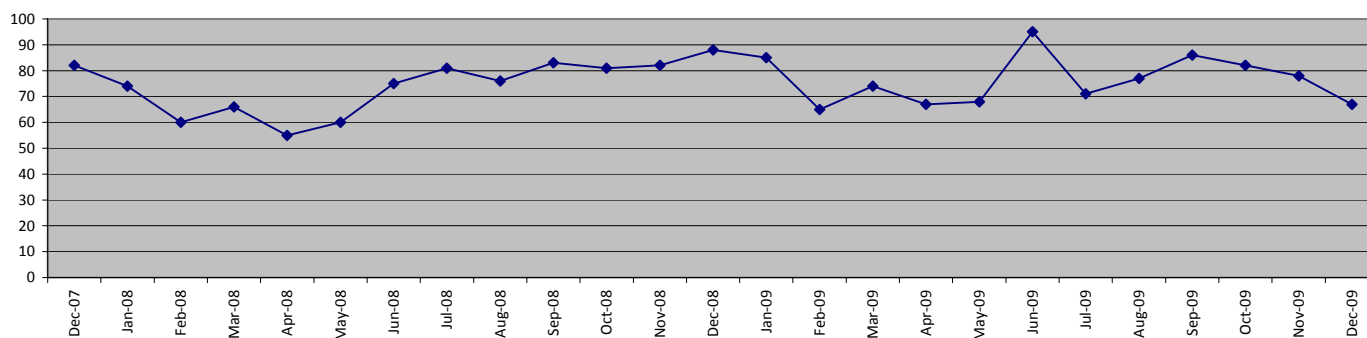
Month	Central	Isle of Wight	North & East	Portsmouth	Southampton	Western	Total
Incidents	25	9	19	24	50	20	<b>147</b>
Crimes	16	5	15	19	34	14	<b>103</b>
Detections	5	3	11	10	13	3	<b>45</b>
Detection Rate	31.25%	60.00%	73.33%	52.63%	38.24%	21.43%	<b>43.69%</b>

## Protecting our communities

### Road traffic casualties

SPI 9.1 Force Target

**Fatal/serious injury casualties - all victims**

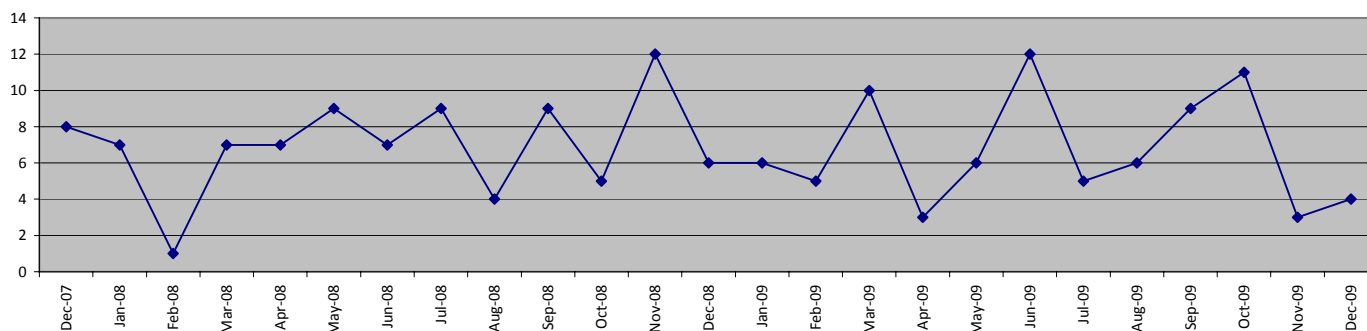


The Force target 2009/2010 is for less than 888 casualties, which equates to less than 669 in 275 days

YTD Dec 2009 = 691 casualties

	Central	Isle of Wight	North&East	Portsmouth	Southampton	Western	Total
April 2009 - December 2009	178	57	131	66	79	180	691
of these, fatalities were	5	2	7	2	0	12	28
April 2008 - December 2008	134	74	147	79	71	176	681

**Fatal/serious injury casualties - victims under 16 years**



The DETR target is for a 50% reduction in child casualties by 2010 from 164 to 82

	Central	Isle of Wight	North&East	Portsmouth	Southampton	Western	Total
April 2009 - December 2009	17	3	10	9	7	13	59
of these, fatalities were	0	0	0	0	0	0	0
April 2008 - December 2008	13	10	18	8	10	9	68

Note: YTD numbers may change as the accident record data are updated each month

Note: The casualties in East Hampshire have all been attributed to North & East OCU in the absence of a breakdown by OCUs

Note: In October an issue was identified with the data collection for this measure. This resulted in an increase in the figures. The data provided on this page has now been updated.

## Protecting our communities

Note: The below data shows some reductions on data published in previous months, this is due to technical problems being encountered. These issues have now been resolved, and this data is now correct.

Impaired Driving Interventions									
		Dog Support Unit	Force Support Unit	Roads Policing Unit	Tactical Firearms Support Unit	Other 8 OCU Officers	8 OCU Total	Rest of Force	Force Total
Breath Tests	YTD June 09 - January 10	181	60	9035	1048	1	10325	10806	21131
	January 10	13	8	773	67	0	861	1191	2052
	YTD June - January 09	61	110	15787	1911	0	17869	12849	30718
	January 09	19	12	1754	187	0	1972	1270	3242
Field Impairment Tests	YTD April 09 - January 10	0	0	288	8	0	296	71	367
	January 10	0	0	18	0	0	18	0	18
	YTD April - January 09	0	0	656	19	1	676	40	716
	January 09	0	0	45	3	0	48	3	51

<sup>1</sup> The Drager (breath test) units were implemented in June 2008 therefore no data can be included in these figures for April and May 2008.

Speed Offences										
		Dog Support Unit	Force Support Unit	Roads Policing Unit	Specialist Firearms Officers	Armed Response Vehicles	Other 8 OCU Officers	8 OCU Total	Rest of Force	Force Total
YTD April - December 09		17	10	5430	10	53	7	5527	910	6437
December 09		0	0	476	2	3	0	481	64	545
YTD April - December 08		18	1	6587	26	155	0	6787	416	7203
December 08		2	1	482	3	4	0	492	24	516
January 2010 (Provisional)		3	0	276	1	1	0	281	34	315

Mobile Phone Offences										
		Dog Support Unit	Force Support Unit	Roads Policing Unit	Specialist Firearms Officers	Armed Response Vehicles	Other 8 OCU Officers	8 OCU Total	Rest of Force	Force Total
YTD April - December 09		7	12	2013	54	268	0	2354	1167	3521
December 09		0	2	196	8	33	0	239	104	343
YTD April - December 08		17	2	3368	46	482	0	3915	1369	5284
December 08		2	0	287	8	36	0	333	108	441
January 2010 (Provisional)		0	0	146	3	18	0	167	67	234

Seatbelt Offences										
		Dog Support Unit	Force Support Unit	Roads Policing Unit	Specialist Firearms Officers	Armed Response Vehicles	Other 8 OCU Officers	8 OCU Total	Rest of Force	Force Total
YTD April - December 09		17	4	2240	2	129	0	2392	1113	3505
December 09		0	0	79	1	8	0	88	57	145
YTD April - December 08		25	2	5327	3	413	3	5773	1477	7250
December 08		1	0	410	0	14	0	425	84	509
January 2010 (Provisional)		0	0	102	0	5	1	108	26	134

**Sickness Data**

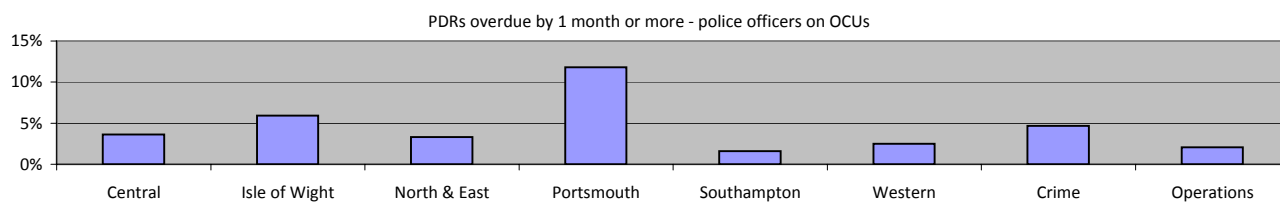
In July Hampshire Constabulary undertook a major upgrade of the software used to provide sickness data. This upgrade has resulted in a significant amount of change to the system and has resulted in sickness data being unavailable in time to publish in this Performance Profile

**SPI 13.1 Force Target**  
**SPI 13.2 Force Target**

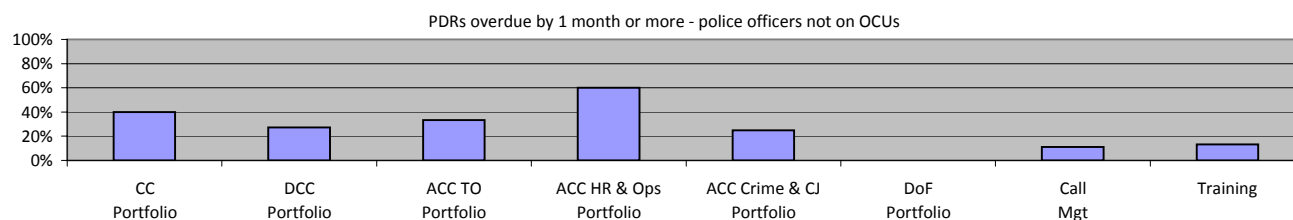
## Making the most of our resources

### Overdue PDRs

#### Police officer PDRs - police officers in OCU's



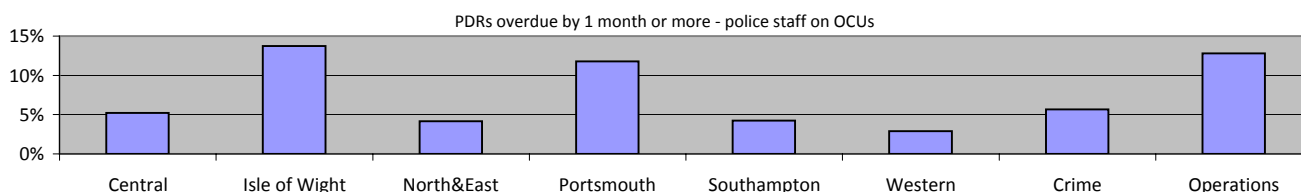
January 2010	Central	Isle of Wight	North & East	Portsmouth	Southampton	Western	Crime	Operations
Population	604	220	573	407	495	522	407	389
Overdue	22	13	19	48	8	13	19	8
% overdue	3.6%	5.9%	3.3%	11.8%	1.6%	2.5%	4.7%	2.1%



January 2010	CC Portfolio	DCC Portfolio	ACC TO Portfolio	ACC HR & Ops Portfolio	ACC Crime & CJ Portfolio	DoF Portfolio	Call Mgt	Training
Population	5	44	9	5	12	N/A	36	53
Overdue	2	12	3	3	3	N/A	4	7
% overdue	40.0%	27.3%	33.3%	60.0%	25.0%	N/A	11.1%	13.2%

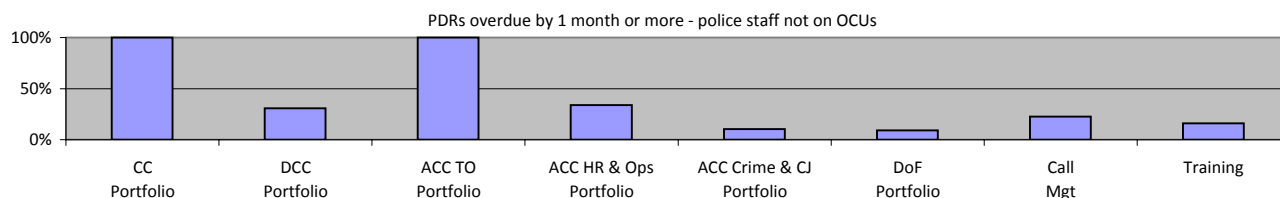
ACC HR and Ops Portfolio excludes Training figures which are reported on separately. No police officers work within DoF Portfolio.

#### Police staff PDRs - police staff in OCU's



January 2010	Central	Isle of Wight	North&East	Portsmouth	Southampton	Western	Crime	Operations
Population	250	102	217	178	212	207	317	133
Overdue	13	14	9	21	9	6	18	17
% overdue	5.2%	13.7%	4.1%	11.8%	4.2%	2.9%	5.7%	12.8%

#### Police staff PDRs - police staff not in OCU's



January 2010	CC Portfolio	DCC Portfolio	ACC TO Portfolio	ACC HR & Ops Portfolio	ACC Crime & CJ Portfolio	DoF Portfolio	Call Mgt	Training
Population	2	317	2	62	338	394	147	88
Overdue	2	97	2	21	35	36	33	14
% overdue	100.0%	30.6%	100.0%	33.9%	10.4%	9.1%	22.4%	15.9%

ACC HR and Ops Portfolio excludes Training figures which are reported on separately

## Making the most of our resources

### Budget spend

The actual spend to the end of December 2009 was £217.7m. The projected spend for the force at the end of the financial year is £299.186m, which will be an underspend of £3.911m against the agreed budget.

	Central	Isle of Wight	North & East	Portsmouth	Southampton	Western	Crime	Operations
Projected over/(under)spend 2009/2010	-£220,000	-£93,000	-£74,000	-£164,000	-£140,000	-£262,000	-£411,000	-£134,000

### Efficiency savings

The Authority needs to maximise efficiency gains both due to its budgetary constraints and in order to achieve value for money. In addition, there is a national Home Office target to deliver recurring efficiency or productivity gains equivalent to 10.3% of the 2007/08 'Gross Revenue Expenditure' over three years, by the end of 2010/11. Each Authority must set its own challenging target. The Authority and Force are currently working to a target equivalent to the national target, which equates to £33m over the 3 years (an average of £11m per annum). The actual achieved as at 31/03/09 was £9.4m. The current value of efficiency initiatives included in the register is £25.708m

### Specialist support

7 OCU	OCU Supported						Total
	Central	Isle of Wight	North & East	Portsmouth	Southampton	Western	
April 2009	2	1	4	4	4	1	16
May 2009	1	1	0	3	3	0	8
June 2009	4	0	1	2	1	1	9
July 2009	4	1	1	1	1	1	9
August 2009	3	1	6	0	1	3	14
September 2009	2	2	2	1	2	5	14
October 2009	0	0	1	2	0	2	5
November 2009	1	0	4	0	3	0	8
December 2009	0	0	2	2	3	0	7
January 2010	0	2		2	2	2	8
<b>Total</b>	<b>17</b>	<b>8</b>	<b>21</b>	<b>17</b>	<b>20</b>	<b>15</b>	<b>98</b>

NOTE: An 'assist' includes assistance that is outside of normal working practices and can encompass practical resources and/or managerial support. For example, it includes support with house to house/investigative enquiries, administrative support, interviewing/statement taking, advice and IT examinations, to name a few. A single assist can involve anything from one member of staff to several from a period of a few hours, to a whole week. An assist does not include phone calls.

### 8 OCU

Note: The 8 OCU data shows some reductions on data published in previous months, this is due to technical problems being encountered. These issues have now been resolved, and this data is now correct.

8 OCU Commitment to ANPR Operations - April 2009 - January 2010								
	OCU Supported							Total
	Central	Isle of Wight	North & East	Portsmouth	Southampton	Western	Other*	
No. of Ops	134	9	79	60	70	59	43	454
Arrests	61	3	20	30	60	20	8	202
S.165 Vehicle Seizures	196	11	56	148	174	83	122	790
Impaired Drivers	16	0	15	26	29	9	9	104
<b>Total Results</b>	<b>273</b>	<b>14</b>	<b>91</b>	<b>204</b>	<b>263</b>	<b>112</b>	<b>139</b>	<b>1096</b>
Cash/POCA Seizures	Seized by or assisted by 8 OCU ANPR teams (£)							22,770
Drugs Seizures	Seized by or assisted by 8 OCU ANPR teams (approx £)							1,501,275

8 OCU NON-ANPR Pre-Planned Operations/Tasks/Requests for Resources - April 2009 - January 2010								
	OCU Supported							Total
	Central	Isle of Wight	North & East	Portsmouth	Southampton	Western	Other*	
No. of Ops	200	90	182	159	295	271	47	1244
Arrests	62	323	102	72	131	69	12	771
S.165 Vehicle Seizures	25	15	14	16	35	33	3	141
<b>Total Results</b>	<b>87</b>	<b>338</b>	<b>116</b>	<b>88</b>	<b>166</b>	<b>102</b>	<b>15</b>	<b>912</b>
Cash/POCA Seizures	Seized by or assisted by 8 OCU teams (not ANPR) (£)							164,909
Drugs Seizures	Seized by or assisted by 8 OCU ANPR teams (approx £) from Nov 2009							12,900
Drugs Seizures	Seized by or assisted by 8 OCU teams (not ANPR) (approx Kgs)							16.4

Isle of Wight arrests include Isle of Wight Festival and Bestival detentions.

\* Other is Mutual Aid or Out of County, a review of locations has reduced this number.

## Equipping our team to deliver

### Financial awareness training

Financial awareness training will be undertaken for budget holders with the aim of ensuring a minimum of 95% of budget holders are trained by the end of the financial year. The target is for at least 95% of all Chief Inspector to Chief Superintendents to be trained by the end of the financial year

	Full Year Apr 09 - Mar 10		Year to Date (Jan 2010)	
	Courses Planned	Numbers to be trained	Courses Held	Numbers Trained
Chief Inspector to Chief Superintendent (target)	10	160	9	49
All staff				111

### Preparing for frontline supervision

A leadership project is underway and a formal Force leadership target will be established with supporting material to be published here in the coming months

	Full Year Apr 09 - Mar 10		Year to Date (Jan 2010)	
	Courses Planned	Numbers to be trained	Courses Held	Numbers Trained
Sergeants Operational Activities	6	108	4	44
Inspectors Statutory Responsibilities	5	70	3	36
First Line Manager - Leadership Part 1	6	96	9	126
First Line Manager - Leadership Part 2	6	96	7	92
First Line Manager - Action Learning Sets	18	108	25	237

### Mobile data

The Constabulary has achieved the roll out of 300 mobile data terminals (as required by NPIA). Further data follow in the new year.

### Minority ethnic officer recruitment

SPI 3.1

	All recruits	Minority ethnic recruits	%
YTD January 2010	158	4	2.5%

### Female officer representation

SPI 3.2

	Male strength	Female strength	%
YTD January 2010	2675.8	1029.5	27.78%