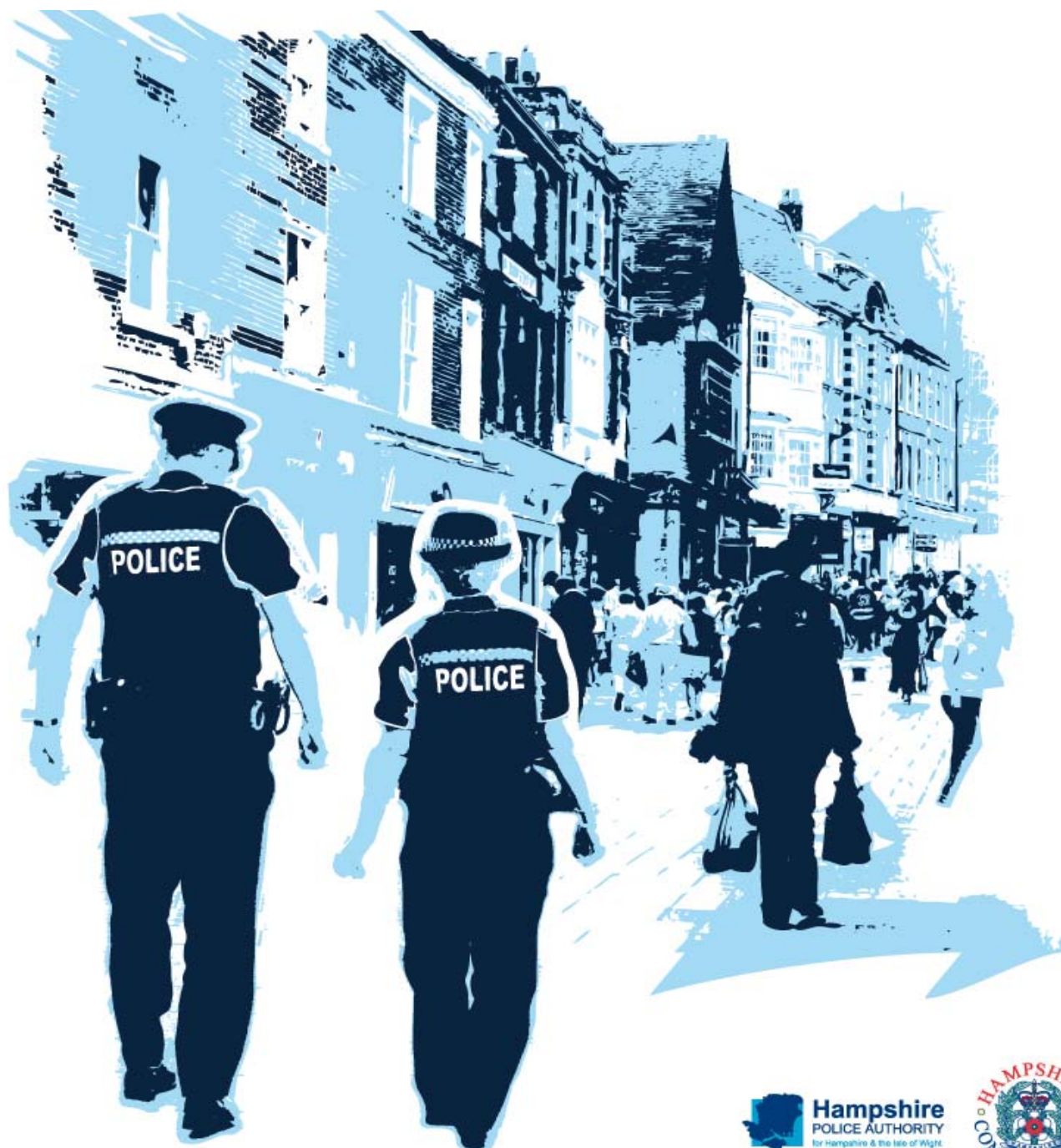


Performance Profile September 2010



Summary and index

Summary

2010/11 Reporting Year

This document contains a strategic overview of the Constabulary's performance. It has a variety of performance measures within it. The format of the profile has been aligned to the Policing Priorities identified by the Control Strategy. It provides information on our performance against Force targets, some of the APACS Indicators and the Policing Pledge. It also aims to provide supplementary information to assist in understanding reasons behind the performance in these areas. It has been designed as a headline document that will enable our customers, both internally and externally, to easily assess performance information for key domains. This year additional monitoring information within the six domains of the Policing Priorities will be published quarterly - a calendar of publication is located at the bottom of this page. If during a month an issue is identified which needs to be highlighted this will be done through 'exception reporting'.

A matrix can be found at the front of the profile which reflects our year to date performance against our targets.

Performance in key areas is then explored in more depth with an indication of where each measure has originated - for example, APACS Indicator or a Force Control Strategy (FCS) measure.

Where applicable, within the document, MSG (Most Similar Group) data is published along with the crime and detection data. MSGs are calculated by the Home Office based on a number of socio-demographic & geographic variables which are strongly linked to crime/incident levels and the fear of crime. These groups provide a benchmark for comparison of crime and detection rates. Below the applicable crime tables there are three rows relating to MSG data. The first provides the MSG position for the OCU/Force for that crime type. The second displays OCU Actual, this is the number of offences per 1,000 population. The third row shows the MSG Average which is the total number of offences per 1,000 population divided by the number within the MSG. The same three rows are provided in relation to detection data, where data is provided in % figures rather than per 1,000 population.

Please note: iQuanta data is provisional. Within the profile, Hampshire data is published and compared against the MSG average. The other forces within Hampshire's MSG are: Avon and Somerset, Bedfordshire, Essex Hertfordshire, Kent, Sussex and Thames Valley. We are unable to provide figures from iQuanta for these forces, due to the provisional nature of this data.

This document is then taken forward by key stakeholders within the organisation to the Force Performance Review Group, where it is used to highlight areas of good performance and those for development.

Crime OCU contribute to the following areas within this document, either via investigation, forensic support, and/or review of these crimes: homicide, serious violent, sexual and acquisitive crime, class A drug supply, drug seizures, domestic violence/hate crime, FIU form submissions, gun/knife crime (where this results in a major investigation/forensic support).

This is an evolving document and as such, the contents of which may alter over time and any feedback would be welcomed by the Performance Review Team.

Calendar of Quarterly Reporting

April - Catching criminals & managing offenders and Protecting our communities
May - Making the most of our resources and Equipping our team to deliver
June - Providing an excellent service and An active presence in every neighbourhood
July - Catching criminals & managing offenders and Protecting our communities
August - Making the most of our resources and Equipping our team to deliver
September - Providing an excellent service and An active presence in every neighbourhood
October - Catching criminals & managing offenders and Protecting our communities
November - Making the most of our resources and Equipping our team to deliver
December - Providing an excellent service and An active presence in every neighbourhood
January - Catching criminals & managing offenders and Protecting our communities
February - Making the most of our resources and Equipping our team to deliver
March - The year end profile will have all six domain areas included

MSG Colour Key

Force	OCU
1-2	1-4
3-4	5-8
5-6	9-12
7-8	13-15

Index

Page

FCS = Force Control Strategy

Year to date performance matrix

2	Summary			including notes on matrices terminology
3	Index			
4	Year to date targets matrix			

Providing an excellent service

5	National public confidence measure	APACS 2.2	FCS	iQuanta
5	Local confidence survey data			Consultation & Research Team
6	Overall satisfaction	APACS 1.1	FCS	Consultation & Research Team
6	Being kept informed		FCS	Consultation & Research Team
6	Comparative satisfaction of minority ethnic groups	APACS 1.3		Consultation & Research Team
6	Satisfaction of victims of racist incidents	APACS 1.2		Consultation & Research Team
6	MSG user satisfaction data			Consultation & Research Team

An active presence in every neighbourhood

7	Rowdy and nuisance behaviour		FCS	Business Objects
8	Criminal damage		FCS	Business Objects

Catching criminals and managing offenders

9	Serious acquisitive crime	APACS 5.2&6.2	FCS	Business Objects
10	Breakdown: Robbery, dwelling burglary, vehicle crime			Business Objects
10	Breakdown: Theft of a motor vehicle, theft from a motor vehicle			Business Objects
10	Organised crime groups			7 OCU Performance Team

Protecting our communities

11	Violence against the person with injury	APACS5.5&5.6		Business Objects
12	Serious violent crime	APACS 5.1&6.1	FCS	Business Objects
13	Assault with less serious injury	APACS 5.3	FCS	Business Objects
14	Reduction in dwelling burglary	APACS 5.2		Business Objects

Making the most of our resources

15	Minority ethnic recruitment		FCS	Personnel
15	Minority ethnic police officer recruitment	APACS 3.1		Personnel
15	Minority ethnic police staff recruitment			Personnel
15	Female officer representation	APACS 3.2		Personnel

Monitoring Information for Providing an excellent service

16	Reports of incivility, neglect or failure in duty			PSD
16	Allegations and their resolution			PSD

Monitoring Information for An active presence in every neighbourhood

17	Safer neighbourhood teams			CARM/Personnel
17	Safer neighbourhood team personnel			CARM/Personnel
18	Stop and search - Internal use only			ICR (Cyclops)

Exception Reporting for Protecting our communities

19	Specialist Support - 8 OCU			8 OCU Performance Team
----	----------------------------	--	--	------------------------

Year to date performance targets matrix

	Target	Actual	Central	Isle of Wight	North & East	Portsmouth	Southampton	Western
Providing an excellent service								
Confidence in local police	55.3%	52.5%	This is a Force measure					
Local confidence measure (latest quarter)	87.3%	83.0%	84.0%	83.0%	83.0%	82.0%	81.0%	83.0%
Overall satisfaction (data for rolling 12 months)	68.0%	70.0%	71.0%	69.0%	70.0%	67.0%	66.0%	73.0%
An active presence in every neighbourhood								
Rowdy & nuisance behaviour (inc vehicle nuisance)	<34768	34496	6003	2446	6355	5683	8222	5787
	OCU specific targets		6887	2282	6424	5428	7777	5971
Reduce criminal damage	<13746	12929	2703	1196	2425	1738	2627	2240
	OCU specific targets		2979	1013	2688	1775	2821	2470
Catching criminals & managing offenders								
Serious acquisitive crime SD	>15%	12.2%	13.4%	18.9%	11.5%	10.3%	11.6%	12.5%
Organised crime group (OCG) - disruptions	>40%	83%	Owned by Crime OCU					
Protecting our communities								
Reduce violence against the person with injury	<7186	7394	1530	677	1168	1337	1602	1080
	OCU specific targets		1459	491	1184	1284	1673	1094
Reduction in dwelling burglary	<2677	2473	438	145	425	487	625	353
	OCU specific targets		526	128	563	492	509	459
Making the most of our resources								
BME recruitment	>5%	4.9%	This is a Force measure					
Equipping our staff to deliver								
Staff confidence in the organisation	61%	data unavailable	This is a Force measure					
Force Total - targets achieved		5	4	2	5	2	2	5

Notes to be read in conjunction with matrices

All citizen focus data
SD
BME
OCU specific targets

Based on "completely or very satisfied"
Sanction detections
Black and minority ethnic
OCU specific targets are rounded to 0 decimal places; the actual figure may therefore seem the same but appear amber due to this rounding

Force target areas for providing an excellent service

	Target	Actual	Central	Isle of Wight	North & East	Portsmouth	Southampton	Western
Confidence in local police (latest data)	55.3%	52.5%	This is a Force measure					
Local Confidence Measure (latest data)	87.3%	83.0%	84.0%	83.0%	83.0%	82.0%	81.0%	83.0%
Overall satisfaction (rolling 12 months)	68.0%	70.0%	71.0%	69.0%	70.0%	67.0%	66.0%	73.0%

National Public Confidence Measure

APACS 2.2 Force Target

This data is based on 'The police and local council are dealing with the anti-social behaviour and crime issues that matter in this area'. The Home Office has set a target to achieve a 12% improvement by 2012 against the baseline of 47.3%. Hampshire aimed to improve by 4% each year, as this is the second year, our target this year is an 8% improvement on baseline which equates to 55.3%

Mar-10

Hampshire	52.5%
MSG Position	3 of 8
MSG average	51.2%

Local Confidence Survey Data

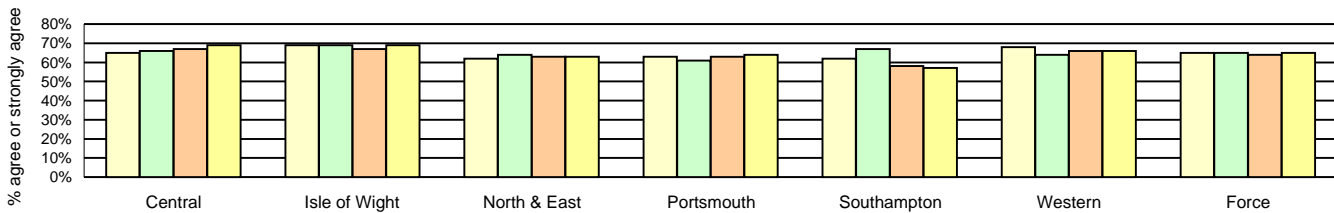
Figures relate to the percentage of respondents who agree or strongly agree with the question. Hampshire's local surveys have a confidence level of +/-4%. This means that changes of less than 4% may not reflect a real change in performance.

The police and local council are dealing with the anti-social behaviour and crime issues that matter in this area

This question is no longer asked as it has ceased to be a Home Office target. It has therefore been removed from the profile.

The police are dealing with the things that matter locally

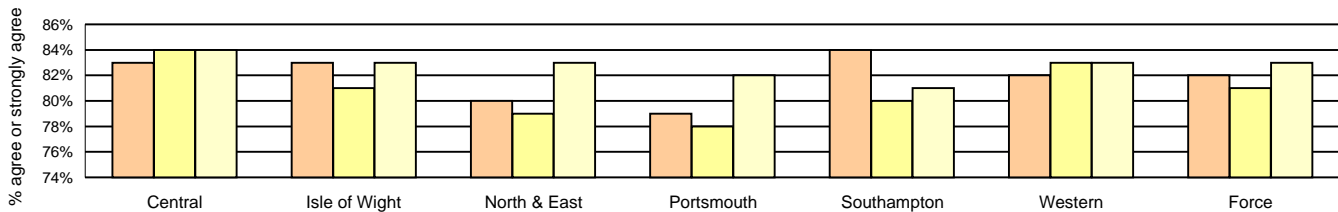
	Central	Isle of Wight	North & East	Portsmouth	Southampton	Western	Force	No. Surveys
October - December 2009	65%	69%	62%	63%	62%	68%	65%	3822
January - March 2010	66%	69%	64%	61%	67%	64%	65%	3708
April - June 2010	67%	67%	63%	63%	58%	66%	64%	3612
July - September 2010	69%	69%	63%	64%	57%	66%	65%	3620



Taking everything into account, I have confidence in the Police in this area

Force Target

Target: 87.3%	Central	Isle of Wight	North & East	Portsmouth	Southampton	Western	Force	No. Surveys
January - March 2010	83%	83%	80%	79%	84%	82%	82%	3708
April - June 2010	84%	81%	79%	78%	80%	83%	81%	3612
July - September 2010	84%	83%	83%	82%	81%	83%	83%	3620



Force target areas for providing an excellent service

Overall satisfaction (user satisfaction survey results)

APACS 1.1 Force Target

Rolling 12 months data relates to: Oct 09 - Sep 10; rolling 3 months data relates to Jul 10 - Sep 10

Overall satisfaction includes burglary, vehicle crime, violent crime and minor injury RTCs

Target 68%	Central	Isle of Wight	North & East	Portsmouth	Southampton	Western	Force	No. Surveys
Rolling 12 months	71%	69%	70%	67%	66%	73%	70%	7728
Rolling 3 months	69%	65%	67%	69%	64%	71%	68%	1966

Being kept informed (user satisfaction survey results)

Rolling 12 months data relates to: Oct 09 - Sep 10; rolling 3 months data relates to Jul 10 - Sep 10

Being kept informed includes burglary, vehicle crime, violent crime and minor injury RTCs

	Central	Isle of Wight	North & East	Portsmouth	Southampton	Western	Force	No. Surveys
Rolling 12 months	61%	62%	59%	58%	58%	63%	60%	7502
Rolling 3 months	55%	56%	59%	59%	56%	60%	57%	1916

Comparative satisfaction of minority ethnic groups

APACS 1.3

Data relates to interviews which took place Oct 09 - Sep 10

These figures are for overall satisfaction for burglary, vehicle crime, violent crime, minor injury RTCs.

	Completely and very satisfied	Completely, very and fairly satisfied	No. Surveys
White	70.3%	85.4%	7263
Minority Ethnic	55.9%	78.0%	322
Satisfaction Gap	14.4%	7.4%	

Satisfaction of victims of racist incidents

APACS 1.2

These figures relate to interviews which took place Oct 09 - Sep 10; these will be updated quarterly

Racist incident overall satisfaction = % completely or very satisfied

	Central	Isle of Wight	North & East	Portsmouth	Southampton	Western	Total
%	55%	90%	53%	67%	56%	60%	60%
Number of surveys	33	10	32	48	64	25	212

MSG information for user satisfaction

Latest iQuanta data for MSG for the 12 months ending June 2010 (iQuanta calculate satisfaction % based on those responding that they are completely, very or fairly satisfied)

	Previous MSG position	Current MSG position	Change		Previous MSG position	Current MSG position	Change
Vehicle crime				Burglary			
Ease of contact	4/8	4/8	↔	Ease of contact	4/8	3/8	↑
Actions taken	4/8	4/8	↔	Actions taken	6/8	5/8	↑
Follow up	4/8	4/8	↔	Follow up	1/8	1/8	↔
Treatment	5/8	5/8	↔	Treatment	5/8	6/8	↓
Whole Experience	4/8	4/8	↔	Whole Experience	4/8	3/8	↑
Violent crime				RTC (minor injury)			
Ease of contact	5/8	5/8	↔	Ease of contact	1/8	1/8	↔
Actions taken	4/8	4/8	↔	Actions taken	2/8	2/8	↔
Follow up	6/8	6/8	↔	Follow up	1/8	1/8	↔
Treatment	5/8	6/8	↓	Treatment	3/8	2/8	↑
Whole Experience	4/8	4/8	↔	Whole Experience	3/8	3/8	↔
All users (excluding racist incidents)							
Ease of contact	1/8	1/8	↔				
Actions taken	4/8	2/8	↑				
Follow up	1/8	1/8	↔				
Treatment	5/8	5/8	↔				
Whole Experience	3/8	3/8	↔				

Force target areas for an active presence in every neighbourhood

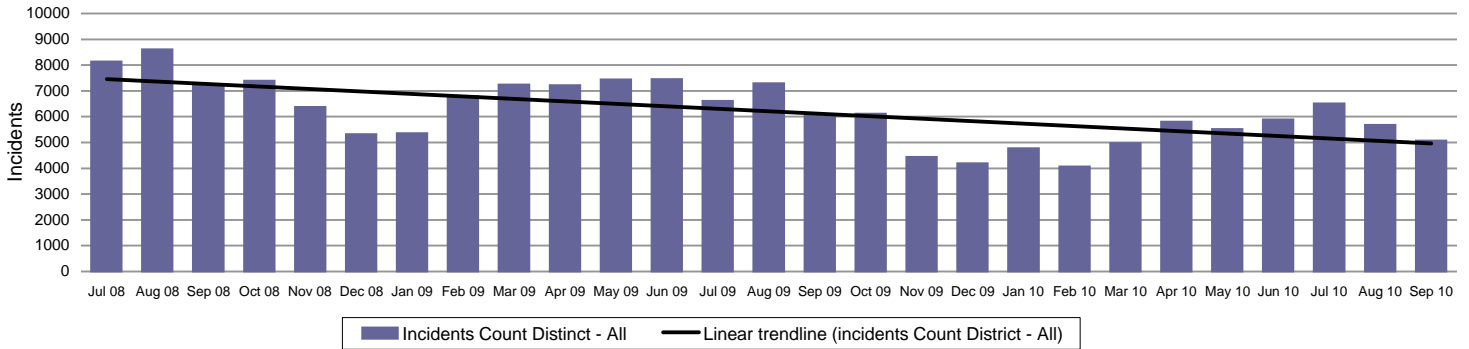
	Target	Actual	Central	Isle of Wight	North & East	Portsmouth	Southampton	Western
Rowdy & nuisance behaviour (inc Vehicle Nuisance)	34768	34496	6003	2446	6355	5683	8222	5787
	OCU specific targets		6887	2282	6424	5428	7777	5971
Reduce criminal damage	13746	12929	2703	1196	2425	1738	2627	2240
	OCU specific targets		2979	1013	2688	1775	2821	2470

Rowdy & nuisance behaviour (including vehicle)

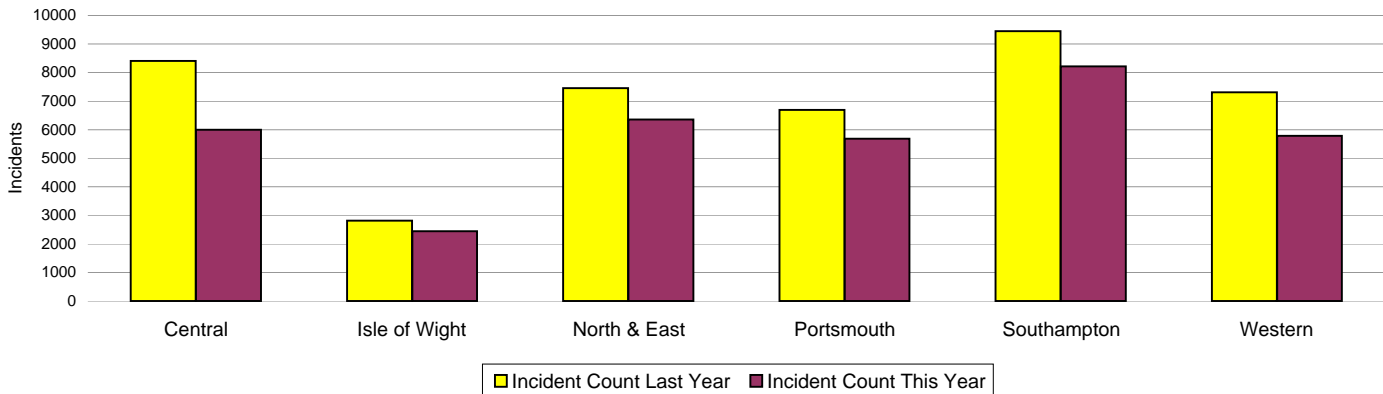
Force Target

In 2009-2010 Rowdy and Nuisance included Inappropriate use of Fireworks, Rowdy & Inconsiderate, Substance Misuse and Street Drinking, with Vehicle Related Nuisance being a separate entity for monitoring purposes however the decision this year has been to bring all key nuisance elements into one section. This data is sourced from RMS and does not reflect the complete NSIR return for Hampshire.

This target is based on a subset of the anti-social behaviour categories, it does not cover all aspects of anti-social behaviour.

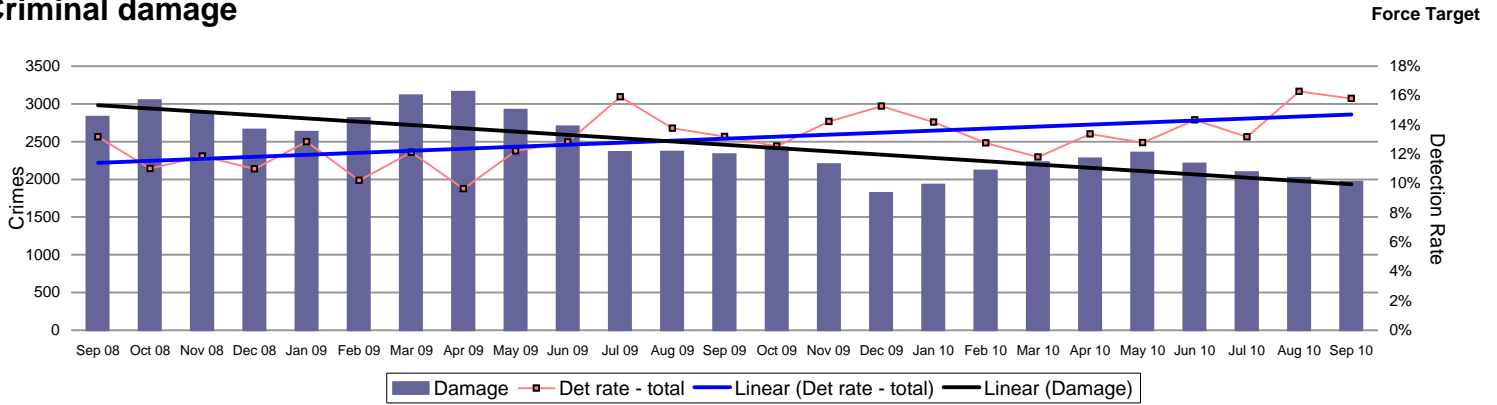


Incidents	Central	Isle of Wight	North & East	Portsmouth	Southampton	Western	Force
YTD Incidents	6003	2446	6355	5683	8222	5787	34496
YTD Target	6887	2282	6424	5428	7777	5971	34768
YTD 09/10 Incidents	8405	2814	7452	6695	9453	7309	42128
This month	828	328	988	789	1338	805	5076
% change from 09/10	-28.58%	-13.08%	-14.72%	-15.12%	-13.02%	-20.82%	-18.12%

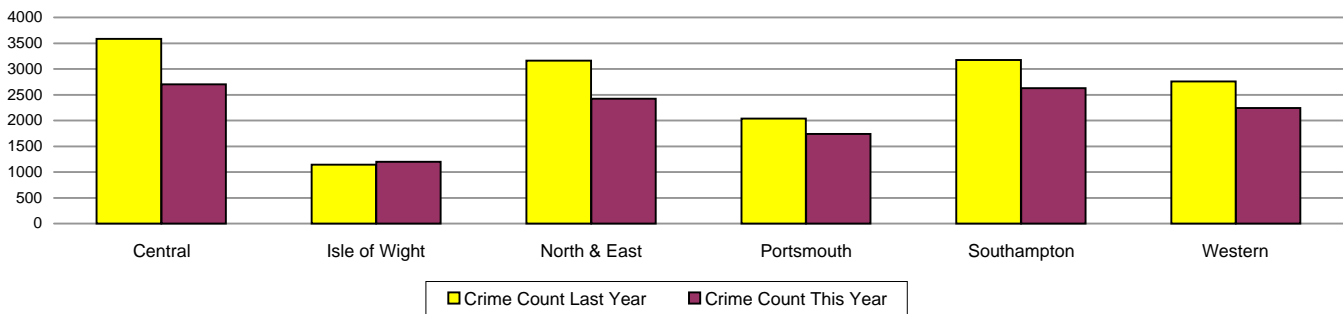


Force target areas for an active presence in every neighbourhood

Criminal damage

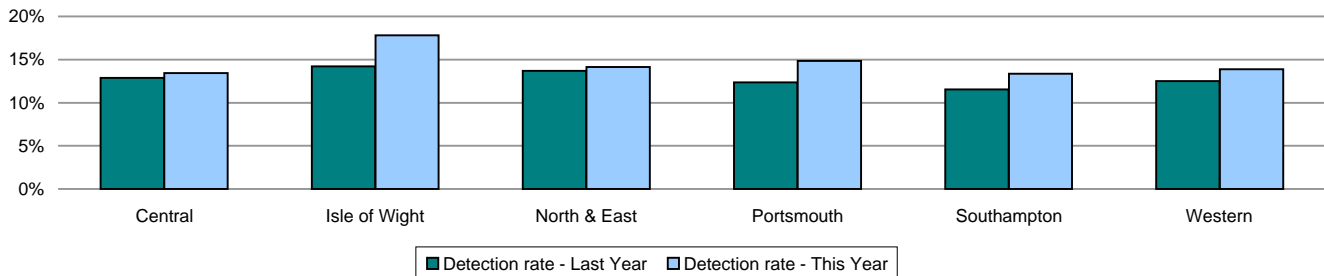


Crimes	Central	Isle of Wight	North & East	Portsmouth	Southampton	Western	Force
YTD Crimes	2703	1196	2425	1738	2627	2240	12929
YTD Target	2979	1013	2688	1775	2821	2470	13746
YTD 09/10 Crimes	3584	1140	3164	2037	3173	2755	15853
This month	421	198	362	244	408	335	1968
% change from 09/10	-24.58%	4.91%	-23.36%	-14.68%	-17.21%	-18.69%	-18.44%
MSG position	12 of 15	15 of 15	7 of 15	12 of 15	15 of 15	5 of 15	7 of 8
MSG actual	2.944	4.352	2.809	4.209	5.382	2.678	3.403
MSG average	2.843	3.380	2.810	3.767	4.052	2.855	3.230



Detections	Central	Isle of Wight	North & East	Portsmouth	Southampton	Western	Force
YTD Detection Rate	13.43%	17.81%	14.14%	14.84%	13.36%	13.88%	14.22%
This month	10.69%	27.78%	14.09%	18.44%	14.22%	17.01%	15.80%
YTD 09/10 Detections	12.89%	14.21%	13.69%	12.37%	11.53%	12.49%	12.74%
MSG position	9 of 15	6 of 15	10 of 15	2 of 15	7 of 15	10 of 15	6 of 8
MSG actual	12.91%	16.30%	13.10%	14.77%	13.39%	12.87%	13.57%
MSG average	13.10%	14.68%	13.80%	12.60%	13.49%	13.10%	14.06%

Note: Detections refer to Sanction Detections ONLY



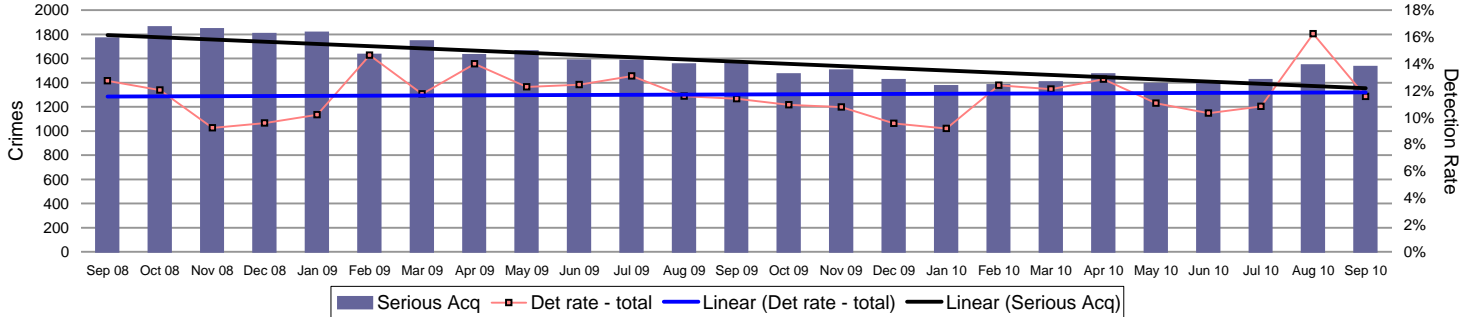
Force target areas for catching criminals and managing offenders

	Target	Actual	Central	Isle of Wight	North & East	Portsmouth	Southampton	Western
Serious acquisitive detection rate	15%	11.4%	13.38%	18.93%	11.54%	10.25%	11.56%	12.48%
OCG disruptions	40%	83%	Owned by Crime OCU					

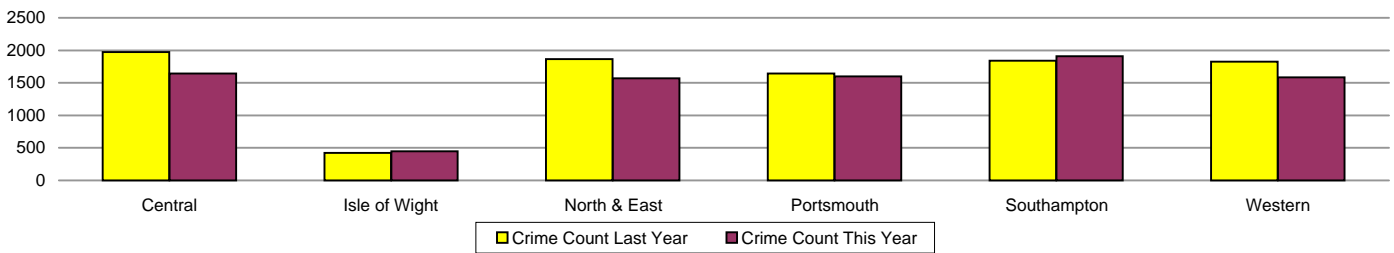
Serious acquisitive crime

APACS 5.2 Force Target

Serious acquisitive crime consists of crimsec codes 28, 29, 34A, 34B, 37/2, 45 and 48



Crimes	Central	Isle of Wight	North & East	Portsmouth	Southampton	Western	Force
YTD Crimes	1644	449	1568	1600	1911	1586	8758
YTD 09/10 Crimes	1975	421	1865	1642	1842	1824	9569
This month	299	60	292	293	326	261	1531
% change from 09/10	-16.76%	6.65%	-15.92%	-2.56%	3.75%	-13.05%	-8.48%
MSG actual	5 of 15	5 of 15	3 of 15	5 of 15	8 of 15	7 of 15	2 of 8
MSG average	1.782	1.934	1.754	3.943	4.122	1.898	2.339
MSG average	2.27	2.165	2.215	4.247	4.137	2.062	2.742



Detections

Target >15%

	Central	Isle of Wight	North & East	Portsmouth	Southampton	Western	Force
YTD Detection Rate	13.38%	18.93%	11.54%	10.25%	11.56%	12.48%	12.21%
This month	12.37%	11.67%	10.62%	12.29%	12.27%	9.96%	11.56%
YTD 09/10 Detections	10.53%	15.44%	12.82%	14.43%	12.32%	11.95%	12.48%
MSG position	12 of 15	8 of 15	13 of 15	10 of 15	10 of 15	10 of 15	5 of 8
MSG actual	10.51%	16.76%	10.12%	11.10%	12.72%	11.45%	11.45%
MSG average	12.89%	16.34%	13.15%	11.92%	14.13%	12.79%	12.96%

Note: Detections refer to Sanction Detections ONLY



Force target areas for catching criminals and managing offenders

Serious acquisitive crime breakdown

Robbery

Year to date	Central	Isle of Wight	North & East	Portsmouth	Southampton	Western	Force
Crimes	47	15	100	129	205	59	555
09/10 crimes	51	15	76	119	187	75	523
% change from 09/10	-7.84%	0.00%	31.58%	8.40%	9.63%	-21.33%	6.12%
MSG position	5 of 15	5 of 15	11 of 15	7 of 15	12 of 15	9 of 15	4 of 8
Detection rate	19.15%	40.00%	25.00%	19.38%	25.37%	30.51%	24.32%
MSG position	8 of 15	2 of 15	10 of 15	11 of 15	10 of 15	5 of 15	4 of 8
Sept 2010							
Crimes	8	3	19	17	32	11	90
Detection rate	25.00%	33.33%	5.26%	17.65%	15.63%	18.18%	15.56%

Dwelling burglary

Year to date	Central	Isle of Wight	North & East	Portsmouth	Southampton	Western	Force
Crimes	438	145	425	487	625	353	2473
09/10 crimes	583	137	573	486	544	431	2754
% change from 09/10	-24.87%	5.84%	-25.83%	0.21%	14.89%	-18.10%	-10.20%
MSG position	6 of 15	5 of 15	2 of 15	3 of 15	8 of 15	2 of 15	2 of 8
Detection rate	18.26%	17.93%	12.24%	13.35%	17.44%	21.25%	16.46%
MSG position	12 of 15	9 of 15	14 of 15	10 of 15	7 of 15	6 of 15	5 of 8
Sept 2010							
Crimes	64	22	78	66	107	71	408
Detection rate	20.31%	18.18%	6.41%	10.61%	20.56%	18.31%	15.69%

Vehicle crime

Year to date	Central	Isle of Wight	North & East	Portsmouth	Southampton	Western	Force
Crimes	1159	289	1043	984	1081	1174	5730
09/10 crimes	1341	269	1216	1037	1111	1318	6292
% change from 09/10	-13.57%	7.43%	-14.23%	-5.11%	-2.70%	-10.93%	-8.93%
MSG position	7 of 15	4 of 15	3 of 15	9 of 15	9 of 15	12 of 15	2 of 8
Detection rate	11.30%	18.34%	9.97%	7.52%	5.55%	8.94%	9.20%
MSG position	10 of 15	6 of 15	10 of 15	12 of 15	12 of 15	12 of 15	6 of 8
Sept 2010							
Crimes	227	35	195	210	187	179	1033
Detection rate	9.69%	5.71%	12.82%	12.38%	6.95%	6.15%	9.58%
Detection numbers	22	2	25	26	13	11	99

Theft of a motor vehicle

Year to date	Central	Isle of Wight	North & East	Portsmouth	Southampton	Western	Force
Crimes	229	77	237	162	266	199	1170
MSG position	4 of 15	3 of 15	3 of 15	4 of 15	8 of 15	7 of 15	1 of 8
Detection rate	17.47%	29.87%	17.30%	11.11%	9.40%	20.10%	15.98%
MSG position	11 of 15	2 of 15	7 of 15	8 of 15	11 of 15	3 of 15	3 of 8
Sept 2010							
Crimes	56	9	44	35	59	34	237
Detection rate	3.57%	11.11%	18.18%	20.00%	8.47%	14.71%	11.81%
Detection numbers	2	1	8	7	5	5	28

Theft from a motor vehicle

Year to date	Central	Isle of Wight	North & East	Portsmouth	Southampton	Western	Force
Crimes	930	212	806	822	815	975	4560
MSG position	8 of 15	8 of 15	4 of 15	11 of 15	8 of 15	13 of 15	4 of 8
Detection rate	9.78%	14.15%	7.82%	6.81%	4.29%	6.67%	7.46%
MSG position	9 of 15	8 of 15	11 of 15	11 of 15	12 of 15	12 of 15	6 of 8
Sept 2010							
Crimes	171	26	151	175	128	145	796
Detection rate	11.70%	3.85%	11.26%	10.86%	6.25%	4.14%	8.92%
Detection numbers	20	1	17	19	8	6	71

Robbery, dwelling burglary and vehicle crime are the component parts of serious acquisitive crime. These individual crime types do not have targets.

Number of Organised Crime Groups (OCGs) disrupted

Force Target

The Force target for 2010/11 is to dismantle or disrupt at least 40% of identified organised crime groups as a result of police or multi agency activity.

YTD September 2010	2009/2010	2010/2011	Target 40% OCGs disrupted against Identified
Number of OCGs identified and mapped	38	6	
Number of OCGs disrupted or partially disrupted through Crime OCU activity	27	5	83%

Force target areas for catching criminals and managing offenders

Number of OCGs subject to tactical activity	72	63	
---	----	----	--

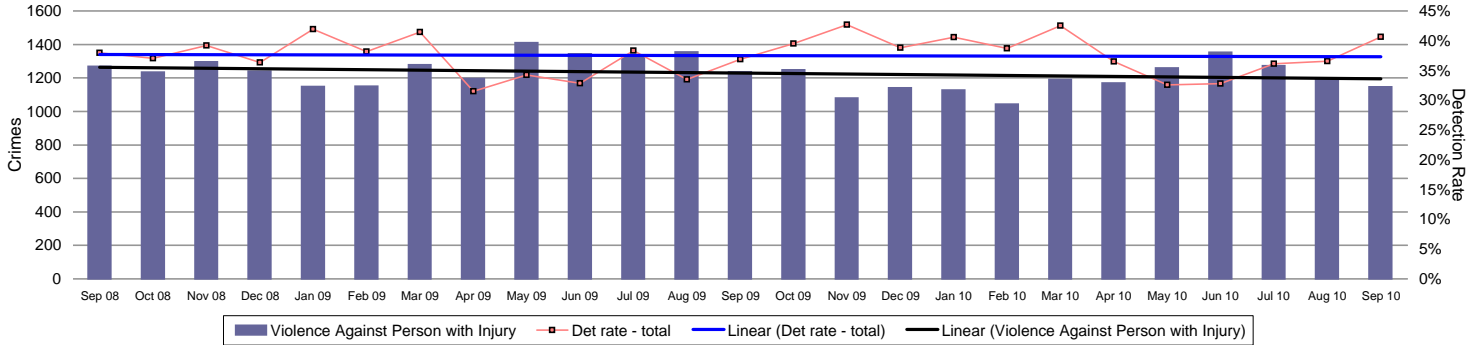
Force target areas for protecting our communities

	Target	Actual	Central	Isle of Wight	North & East	Portsmouth	Southampton	Western
Reduction of VAP with injury	7186	7394	1530	677	1168	1337	1602	1080
	OCU specific targets		1459	491	1184	1284	1673	1094
Reduction in dwelling burglary	2677	2473	438	145	425	487	625	353
	OCU specific targets		526	128	563	492	509	459

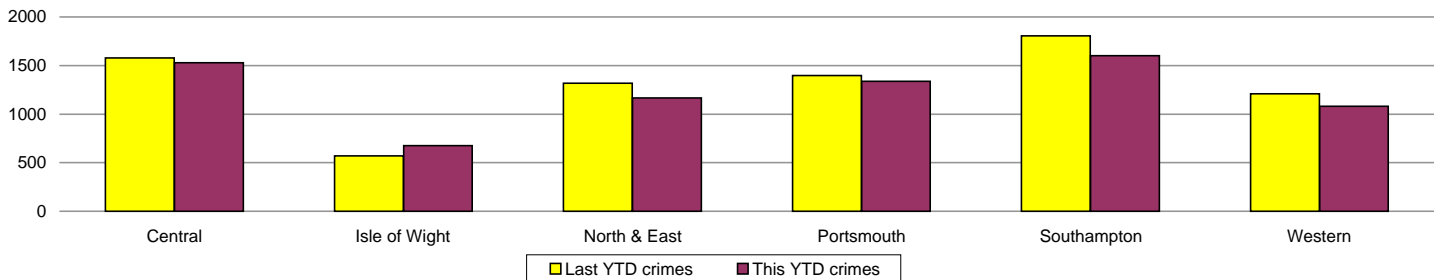
Violence against the person (VAP) with injury

VAP with injury crimsec codes 1, 2, 4.1-4.4, 4.6-4.10, 5A, 5B, 5C, 8F, 8G, 8H, 8J, 8K and 37.1

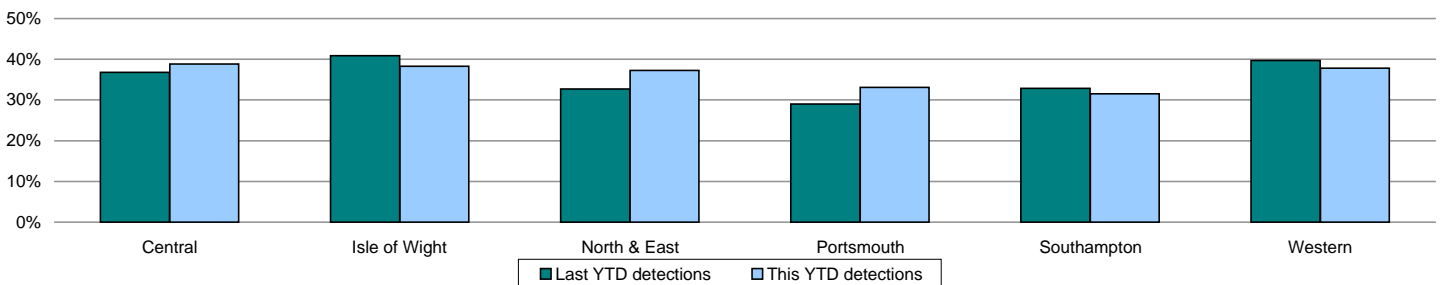
Force Target



Crimes	Central	Isle of Wight	North & East	Portsmouth	Southampton	Western	Force
YTD Crimes	1530	677	1168	1337	1602	1080	7394
YTD Target	1459	491	1184	1284	1673	1094	7186
YTD 09/10 Crimes	1578	570	1318	1396	1806	1209	7877
This month	264	91	161	218	237	175	1146
% change from 09/10	-3.04%	18.77%	-11.38%	-4.23%	-11.30%	-10.67%	-6.13%
MSG position	13 of 15	14 of 15	12 of 15	14 of 15	14 of 15	8 of 15	7 of 8
MSG actual	1.737	2.733	1.400	3.246	3.571	1.363	2.044
MSG average	1.402	1.845	1.282	2.299	2.485	1.359	1.613



Detections	Central	Isle of Wight	North & East	Portsmouth	Southampton	Western	Force
YTD Detection Rate	38.82%	38.26%	37.24%	33.06%	31.52%	37.78%	35.75%
This month	39.02%	45.05%	45.96%	36.24%	33.76%	50.86%	40.66%
YTD 09/10 Detections	36.76%	40.88%	32.70%	29.01%	32.89%	39.70%	34.57%
MSG position	13 of 15	8 of 15	12 of 15	10 of 15	11 of 15	9 of 15	6 of 8
MSG actual	37.37%	43.35%	38.80%	36.07%	34.81%	40.47%	37.61%
MSG average	40.63%	43.76%	42.15%	37.81%	38.91%	40.68%	41.56%

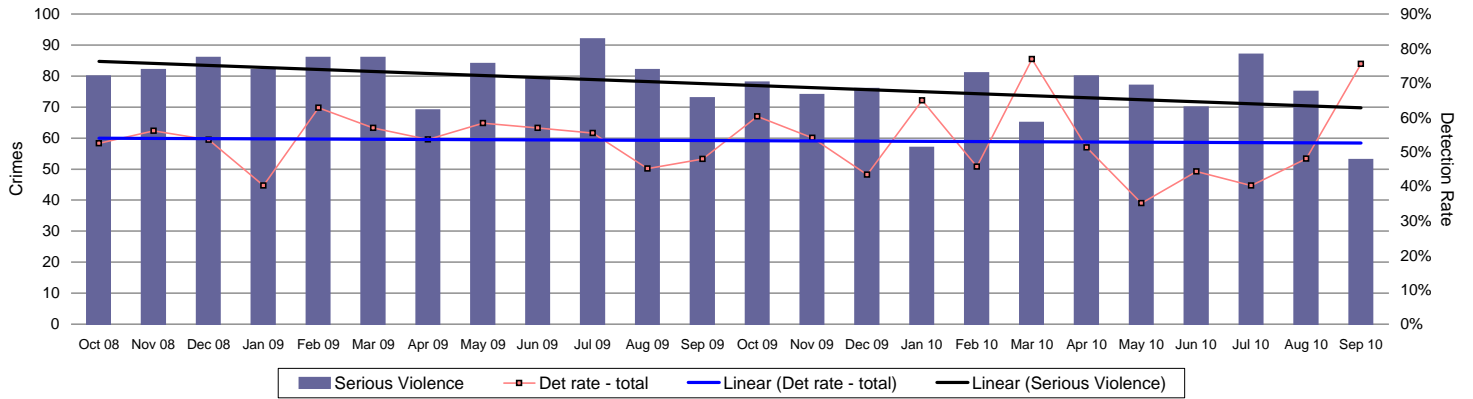


Force target areas for protecting our communities

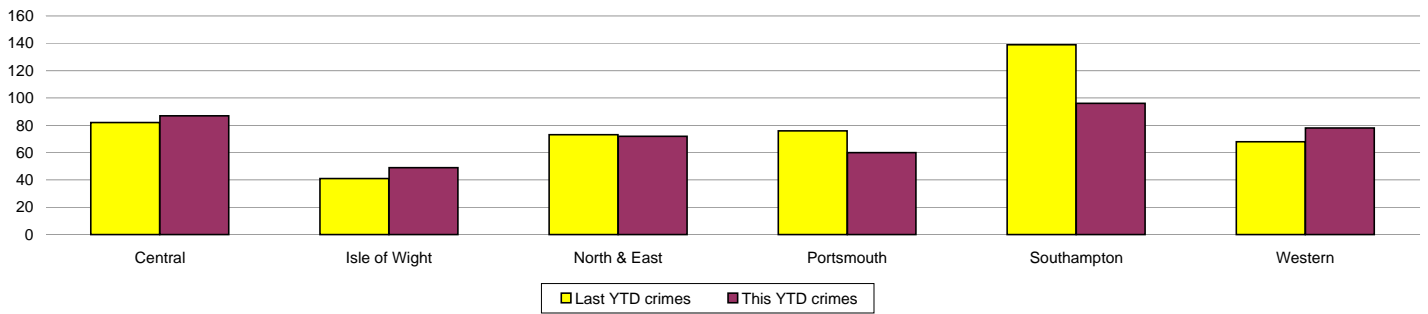
Serious violent crime

APACS 5.1

Serious violent crime consists of crimsec codes 1, 2, 4.1-4.4, 4.6, 4.8, 5A, 5B, 5C, 8F, 8H and 37.1

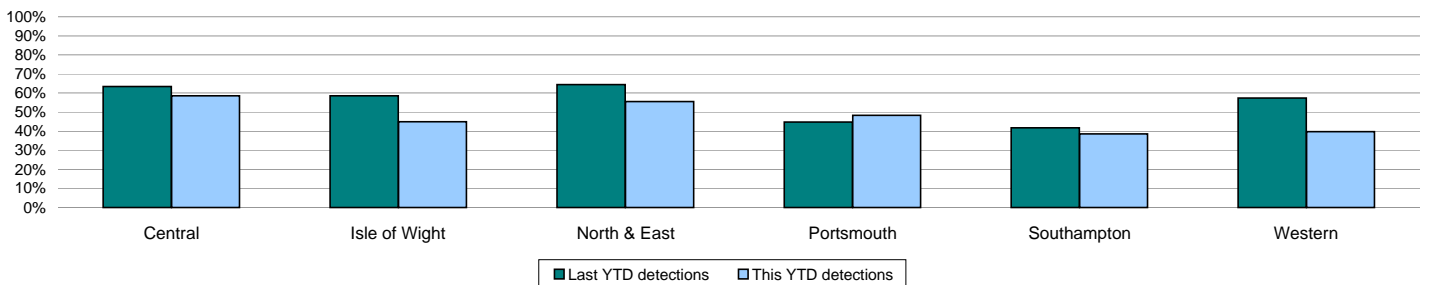


Crimes	Central	Isle of Wight	North & East	Portsmouth	Southampton	Western	Force
YTD Crimes	87	49	72	60	96	78	442
YTD 09/10 Crimes	82	41	73	76	139	68	479
This month	11	3	9	10	11	9	53
% change from 09/10	6.10%	19.51%	-1.37%	-21.05%	-30.94%	14.71%	-7.72%
MSG position	11 of 15	15 of 15	10 of 15	2 of 15	6 of 15	13 of 15	6 of 8
MSG actual	0.093	0.257	0.083	0.12	0.201	0.11	0.123
MSG average	0.095	0.151	0.08	0.24	0.248	0.085	0.122



Detections	Central	Isle of Wight	North & East	Portsmouth	Southampton	Western	Force
YTD Detection Rate	58.62%	44.90%	55.56%	48.33%	38.54%	39.74%	47.51%
This month	118.18%	166.67%	100.00%	40.00%	36.36%	55.56%	75.47%
YTD 09/10 Detections	63.41%	58.54%	64.38%	44.74%	41.73%	57.35%	53.03%
MSG position	12 of 15	8 of 15	13 of 15	10 of 15	10 of 15	10 of 15	5 of 8
MSG actual	10.51%	16.76%	10.12%	11.10%	12.72%	11.45%	11.45%
MSG average	12.89%	16.34%	13.15%	11.92%	14.13%	12.79%	12.96%

Note: Detections refer to Sanction Detections ONLY

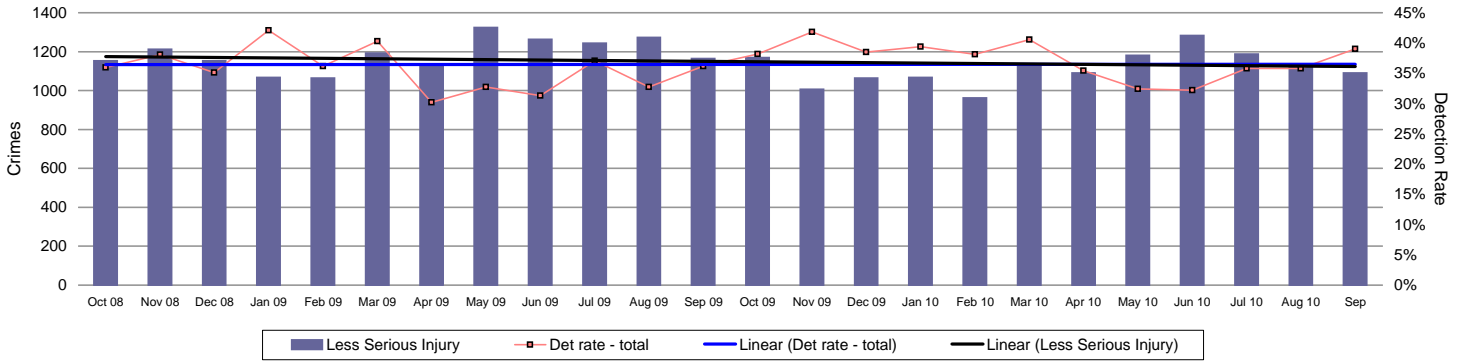


Force target areas for protecting our communities

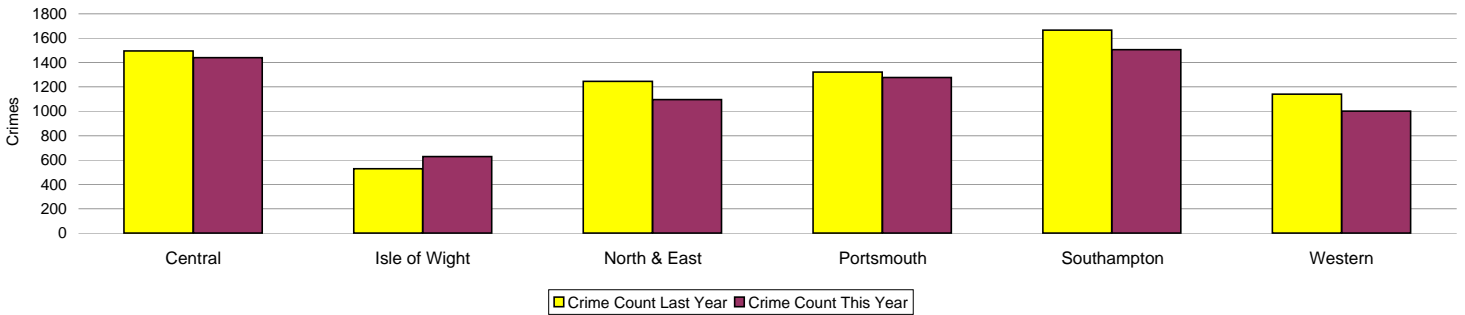
Assault with less serious injury

APACS 5.3

Assault with less serious injury consists of crimsec codes 8G and 8J

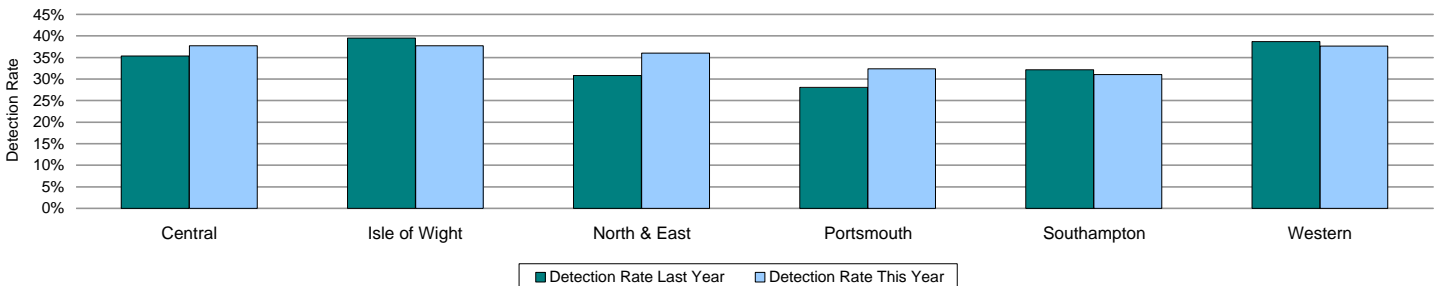


Crimes	Central	Isle of Wight	North & East	Portsmouth	Southampton	Western	Force
YTD Crimes	1440	628	1097	1276	1506	1002	6949
YTD 09/10 Crimes	1495	529	1245	1321	1666	1140	7396
This month	251	88	153	207	226	166	1091
% change from 09/10	-3.68%	18.71%	-11.89%	-3.41%	-9.60%	-12.11%	-6.04%
MSG position	13 of 15	14 of 15	12 of 15	14 of 15	15 of 15	8 of 15	8 of 8
MSG actual	1.641	2.476	1.317	3.125	3.37	1.253	1.92
MSG average	1.307	1.694	1.202	2.058	2.236	1.273	1.491



Detections	Central	Isle of Wight	North & East	Portsmouth	Southampton	Western	Force
YTD Detection Rate	37.71%	37.74%	36.01%	32.37%	31.08%	37.62%	35.01%
This month	35.86%	40.91%	42.48%	36.23%	33.63%	50.60%	39.05%
YTD 09/10 Detections	35.32%	39.51%	30.84%	28.08%	32.17%	38.68%	33.38%
MSG position	13 of 15	7 of 15	12 of 15	10 of 15	11 of 15	10 of 15	6 of 8
MSG actual	36.46%	43.21%	37.44%	35.42%	33.73%	39.81%	36.79%
MSG average	39.59%	43.03%	41.33%	36.99%	37.96%	39.53%	41.05%

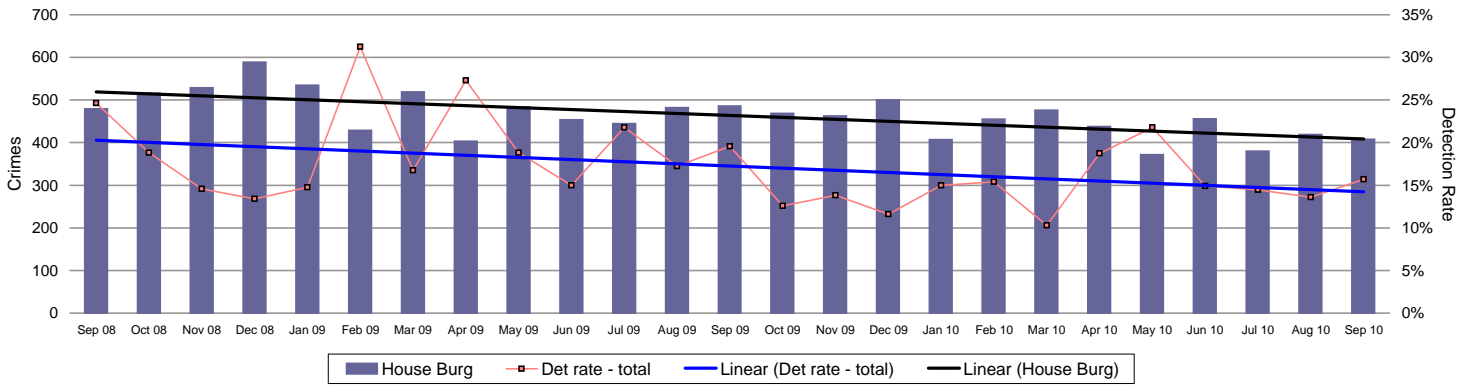
Note: Detections refer to Sanction Detections ONLY



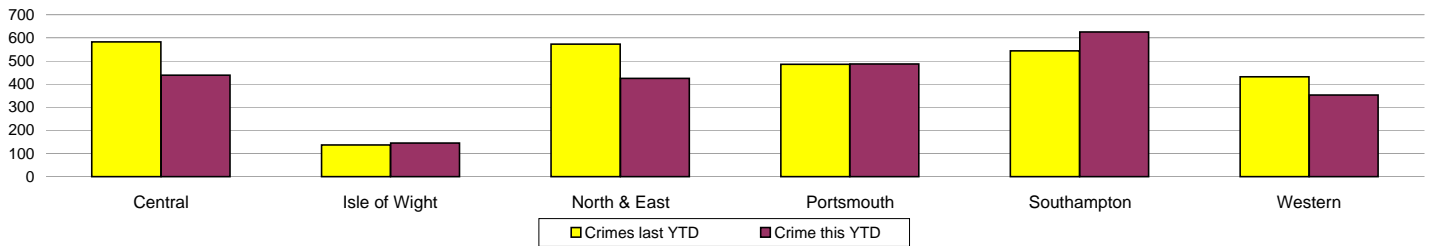
Force target areas for protecting our communities

Reduction in Dwelling Burglary

Force Target

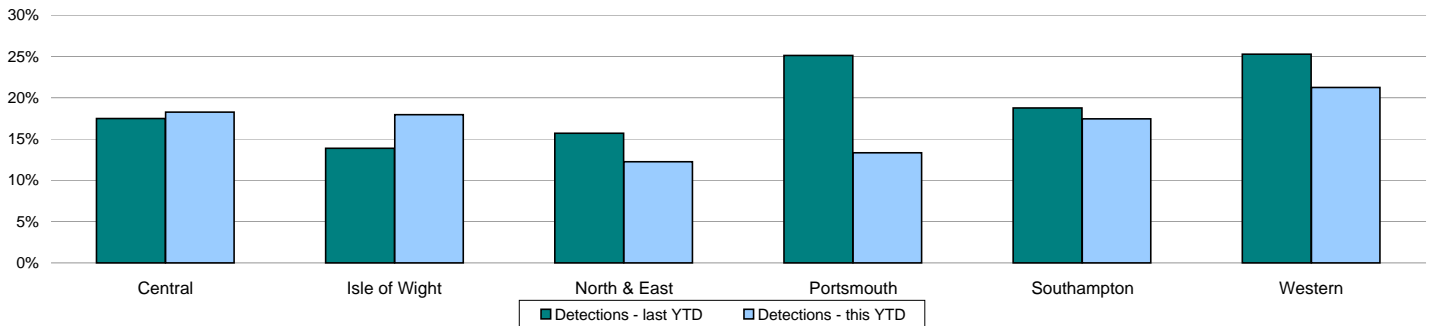


Crimes	Central	Isle of Wight	North & East	Portsmouth	Southampton	Western	Force
YTD Crimes	438	145	425	487	625	353	2473
YTD Target	526	128	563	492	509	459	2677
YTD 09/10 Crimes	583	137	573	486	544	431	2754
This month	64	22	78	66	107	71	408
% change from 09/10	-24.87%	5.84%	-25.83%	0.21%	14.89%	-18.10%	-10.20%
MSG position	6 of 15	5 of 15	2 of 15	3 of 15	8 of 15	2 of 15	2 of 8
MSG actual	1.159	1.472	1.114	3.706	3.281	0.989	1.585
MSG average	1.682	1.716	1.651	2.775	3.491	1.543	2.144



Detections	Central	Isle of Wight	North & East	Portsmouth	Southampton	Western	Force
YTD Detection Rate	18.26%	17.93%	12.24%	13.35%	17.44%	21.25%	16.46%
This month	20.31%	18.18%	6.41%	10.61%	20.56%	18.31%	15.69%
YTD 09/10 Detections	17.50%	13.87%	15.71%	25.10%	18.75%	25.29%	19.75%
MSG position	12 of 15	9 of 15	14 of 15	10 of 15	7 of 15	6 of 15	5 of 8
MSG actual	13.15%	16.41%	10.87%	14.17%	17.99%	18.51%	14.87%
MSG average	17.19%	18.47%	17.73%	14.00%	17.13%	16.92%	16.80%

Note: Detections refer to Sanction Detections ONLY



Force target areas for making the most of our resources

Force target areas for equipping our staff to deliver

	Target	Actual	Central	Isle of Wight	North & East	Portsmouth	Southampton	Western
BME recruitment	5% of all recruits	4.9%	This is a Force measure					

	Target	Actual	Central	Isle of Wight	North & East	Portsmouth	Southampton	Western
Staff confidence in the organisation	61%	data unavailable	This is a Force measure					

Minority ethnic recruitment

Force Target

The 2010/11 target is based on all police staff and police officer recruits. Data published previously has related only to police officer recruitment.

Target = 5%	All recruits	Minority ethnic recruits	Percentage
YTD September 2010	164	8	4.9%

Minority ethnic police officer recruitment

APACS 3.1

	All recruits	Minority ethnic recruits	Percentage
YTD September 2010	58	6	10.3%

Minority ethnic police staff recruitment (incl PCSOs)

	All recruits	Minority ethnic recruits	Percentage
YTD September 2010	106	2	1.9%

Female officer representation

APACS 3.2

	Male strength	Female strength	Percentage
YTD September 2010	2620.5	1030.1	28.22%

Monitoring information for providing an excellent service

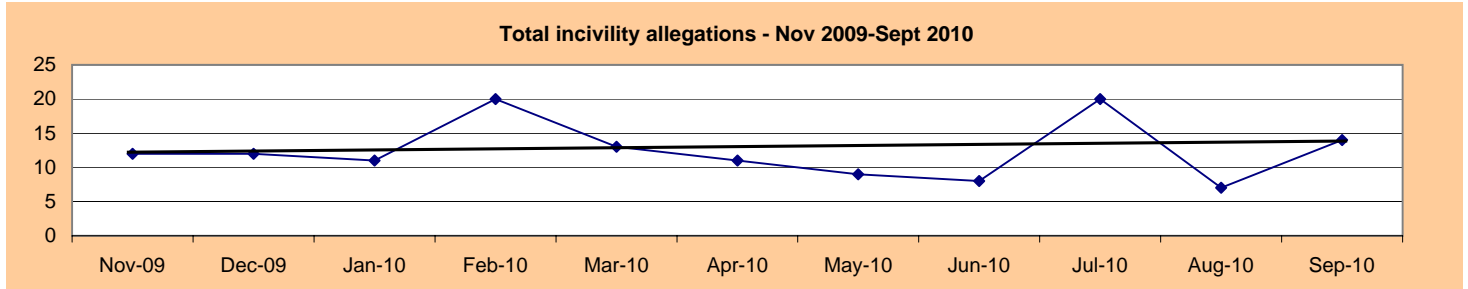
Reports of incivility

	Central	Isle of Wight	North & East	Portsmouth	Southampton	Western	Crime	Operations	Other	Total
April 2010	1	2	2	3	1	1	0	1	0	11
May 2010	4	1	0	0	2	1	0	1	0	9
June 2010	0	0	1	2	3	2	0	0	0	8
July 2010	3	3	3	3	4	2	0	1	1	20
August 2010	0	1	1	2	1	1	0	0	1	7
September 2010	3	1	1	0	2	4	2	1	0	14
Total	11	8	8	10	13	11	2	4	2	69

NOTE: OCU complaints totals may include complaints regarding officers who are serving within the area but are not located at that OCU

NOTE: Data/figures may change due to additional or new information and there may be multiple allegations per complaint

By month	Nov-09	Dec-09	Jan-10	Feb-10	Mar-10	Apr-10	May-10	Jun-10	Jul-10	Aug-10	Sep-10
Incivility	12	12	11	20	13	11	9	8	20	7	14



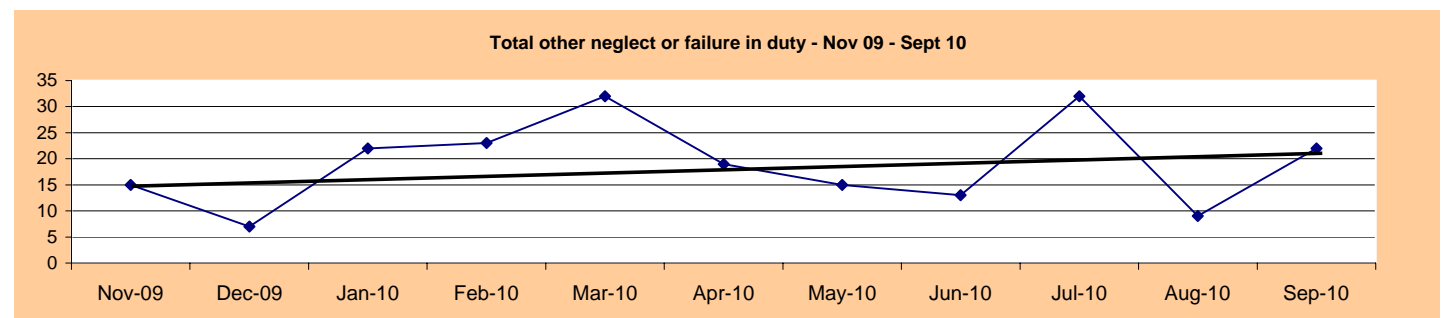
Reports of other neglect or failure in duty

	Central	Isle of Wight	North & East	Portsmouth	Southampton	Western	Crime	Operations	Other	Total
April 2010	5	0	1	10	2	1	0	0	0	19
May 2010	4	0	1	0	5	2	0	2	1	15
June 2010	7	1	2	1	1	1	0	0	0	13
July 2010	1	1	8	5	10	5	0	0	2	32
August 2010	1	1	2	0	1	2	0	0	2	9
September 2010	3	1	5	0	0	5	5	1	2	22
Total	21	4	19	16	19	16	5	3	7	110

NOTE: OCU complaints totals may include complaints regarding officers who are serving within the area but are not located at that OCU

NOTE: Data/figures may change due to additional or new information and there may be multiple allegations per complaint

By month	Nov-09	Dec-09	Jan-10	Feb-10	Mar-10	Apr-10	May-10	Jun-10	Jul-10	Aug-10	Sep-10
Totals	15	7	22	23	32	19	15	13	32	9	22



Allegations and their resolutions - for September 2010

Locally resolved by OCU	45
Locally resolved by PSD	5
Withdrawn	14
Dispensed by IPCC	2
not upheld by OCU	13
Not upheld by PSD	8
Unsubstantiated	44
Upheld by OCU	1
Substantiated	4
Total	136

Monitoring information for an active presence in every neighbourhood

Safer Neighbourhood Teams (SNT)

Abstractions	Central	Isle of Wight	North & East	Portsmouth	Southampton	Western	Force
April 2010	0.87%	1.84%	2.49%	3.22%	1.82%	2.56%	2.05%
May 2010	2.69%	1.80%	1.46%	1.23%	1.68%	3.36%	2.15%
June 2010	4.32%	7.62%	4.30%	2.56%	3.01%	4.23%	4.09%
July 2010	3.30%	3.56%	9.76%	1.72%	1.82%	3.90%	4.30%
August 2010	2.75%	5.93%	2.16%	1.30%	2.16%	2.34%	2.90%
September 2010	3.22%	5.95%	5.27%	1.10%	2.57%	2.50%	4.54%

Target = NPT visible & accessible at least 80% of time (maximum 5% abstractions)

IOW - June figures now updated. 92 hours are re-allocated RD's however these will then take officers off SNT when they use them.

Safer Neighbourhood Team Personnel Data

	Central	Isle of Wight	North & East	Portsmouth	Southampton	Western	Force
Inspector	10	2	11	4	6	8	41
Sergeant	26	10	16	9	13	16	90
Constable	94	29	81	37	58	85	384
PCSO	75	28	66	50	57	63	339

SNT strength by OCU - Police

	Central	Isle of Wight	North & East	Portsmouth	Southampton	Western	Force
Strength	122.1	39.05	103.2	48.03	73.8	104.8	491.0

SNT establishment and strength by OCU - PCSOs

	Central	Isle of Wight	North & East	Portsmouth	Southampton	Western	Force
Establishment	74	28	67	50	59	59	337
Strength	75	27.3	65.2	48.9	56.7	61.8	334.9
Vacancies	-1	0.7	1.8	1.1	2.3	-2.8	2.1

Note: Personnel Planning are no longer able to provide 'length of service' information due to the implementation of the new organisation structure into Delphi. This has meant that all Staff and Police Officers have a position start date of 8 July 2009

Monitoring information for an active presence in every neighbourhood

Stop and Search

This page contains the first set of published data in relation to Stop and Search since changes were made to the processes in Hampshire Constabulary. All the data relates to Stops which took place from 16th August 2010 onwards, and were undertaken under specific powers, namely: Police and Criminal Evidence Act 1984 (PACE), Criminal Justice & Public Order Act 1994, Misuse of Drugs Act 1971, Firearms Act 1968 and Terrorism Act 2000

Breakdown of Stop & Search

16th Aug 10 - 30th Sept 10	Central	Isle of Wight*	North & East	Portsmouth	Southampton	Western	Other	Force
PACE Act	215	72	202	332	463	161	14	1459
Misuse of Drugs Act	208	594	459	357	371	198	5	2192
Firearms Act	3	0	6	3	6	1	0	19
Other	0	0	1	14	0	0	0	15
Total	426	666	668	706	840	360	19	3685

* The Isle of Wight data is skewed by the Bestival during which period a large number of searches are undertaken, predominantly on a population from outside of the Isle of Wight. These stops are mainly drugs related.

Resulting Outcomes

16th Aug 10 - 30th Sept 10	Central	Isle of Wight	North & East	Portsmouth	Southampton	Western	Other	Force
No Further Action	349	419	515	613	696	287	17	2896
Arrested	36	136	57	32	66	28	0	355
Cannabis Warning	15	80	25	24	25	16	0	185
Verbal Warning/Advice Given	17	18	27	5	28	20	2	117
Alcohol/Cigarettes Removed	2	6	7	3	5	4	0	27
Dispersal	4	1	2	0	7	0	0	14
Other	3	6	35	29	13	5	0	91
Total	426	666	668	706	840	360	19	3685

	Central	Isle of Wight	North & East	Portsmouth	Southampton	Western	Other	Force
% Arrested	8.45%	20.42%	8.53%	4.53%	7.86%	7.78%	0%	9.63%
% No Further Action	81.92%	62.91%	77.10%	86.83%	82.86%	79.72%	89.47%	78.59%

Exception report for protecting our communities from crime & harm

8 OCU Data - April - August 2010

Activity (operations/tasks)

	Central	IOW	North&East	Portsmouth	Southampton	Western	Other	Force
Number of activities	88	99	90	70	107	145	18	617
Arrests	29	24	24	31	32	16	5	161
Vehicle seizures	129	55	36	93	118	39	2	472
Impairment	9	5	10	4	2	7	3	40

ProActive Teams Activity

	Central	IOW	North&East	Portsmouth	Southampton	Western	Strategic Roads	Out of County	Force
Days spent in each OCU	48	6	102	41	84	51	8	10	350
Arrests	20	4	37	22	41	8	2	10	144
Vehicle seizures	149	30	108	105	199	67	4	34	696
Impairment	5	0	9	4	2	0	0	0	20
No. vehicles stopped	707	113	1548	625	1322	373	27	195	4910

Fixed Penalty Tickets and Driver Awareness Training offers

	Road Safety Interventions		
	8 OCU Total	Force Total	8 OCU % of Force
Speed Offences	3477	4669	74%
Mobile Phone Offences	1730	2462	70%
Seatbelt Offences	867	1309	66%
Other FPNs	1742	3907	45%