



# **Performance Summary December 2008**

This document contains a strategic overview of the Constabulary's performance. It has a variety of performance measures within it, but for the first time our performance is aligned to the Force Control Strategy.

It is a headline document that will enable our customers, both internally and externally, to easily assess performance in key domains. Additionally with the introduction of the national performance framework called the Assessment of Police and Community Safety (APACS), it is crucial that we become focused and more accountable.

At the front of the document there are several matrices that reflect our performance against our targets, firstly year to date and secondly relevant for that particular month.

Performance in key areas is then explored in more depth with an indication of where each measure has originated - for example, APACS Statutory Performance Indicator (SPI) or a Force Control Strategy (FCS) measure.

This document is then taken forward by key stakeholders within the organisation to the Force Performance Review Group, where it is used to highlight areas of both best practice and those for development.

This is an evolving document and as such, the content may alter over time and any feedback would be welcomed by the Performance Review Team.

## Index

Page

### Year to date performance matrix

4-5

### Monthly performance matrix

6-7

including notes on matrices terminology

### Safer neighbourhoods

8	Overall satisfaction	SPI 1.1	FCS	Consultation & Research Team
8	Being kept informed		FCS	Consultation & Research Team
8	Comparative satisfaction of minority ethnic groups	SPI 1.2		Consultation & Research Team
8	Satisfaction of victims of racist incidents	SPI 1.3		Consultation & Research Team
8	Confidence in local police	SPI 2.3	FCS	iQuanta - Quarterly
8	Understanding community issues		FCS	iQuanta - Quarterly
8	Perception of anti-social behaviour	SPI 4.1		iQuanta - Quarterly
8	Perception of drug use in local area	SPI 4.3	FCS	iQuanta - Quarterly
8	Perception of drunk or rowdy behaviour	SPI 4.2		iQuanta - Quarterly
9	Assault with less serious injury	SPI 5.3	FCS	Business Objects
10	Successful neighbourhood priorities		FCS	Neighbourhood Policing Lead - ACC 'TO' Dept
10	Anti-social use of motor vehicle (NSIR)		FCS	PRT - NSIR Return
10	Anti-social behaviour (NSIR)		FCS	PRT - NSIR Return
11	Criminal damage		FCS	Business Objects

### Safeguard people

12	DV incident arrest rate		FCS	Business Objects
12	DV victimisation		FCS	N/A
12	Repeat victims of domestic violence		FCS	Business Objects
12	Domestic violence OBTJ rate		FCS	Criminal Justice Department
13	Hate crime detection rate		FCS	Business Objects
13	Sexual offender reoffending rate		FCS	N/A

### Protect our communities

14	Road traffic casualties	SPI 9.1	FCS	8 OCU Performance Team
----	-------------------------	---------	-----	------------------------

### Prevent, reduce and detect crime

15	Serious violent crime and sanction detections	SPI 5.1	FCS	Business Objects
16	All crime		FCS	Business Objects
17	Serious acquisitive crime and sanction detections	SPI 5.2	FCS	Business Objects
18	Serious acquisitive crime breakdown			
19	Gun crime rate	SPI 5.5		Business Objects and Manual Checking
19	Knife crime rate	SPI 5.6		Business Objects and Manual Checking
19	Serious sexual crime OBTJ rate	SPI 6.4	FCS	Criminal Justice Department
19	Murder offences		FCS	Business Objects
19	Asset recovery	SPI 8.1	FCS	Specialist Investigation Department
19	PPO convictions	SPI 10.1	FCS	Criminal Justice Department
19	Class A drugs sanction detections		FCS	Business Objects
19	Drug intervention measures (DIMs)			Force Intelligence

### Organisational management

20	Police officer sickness	SPI 13.1	FCS	PRT - Delphi + Personnel - Staffing Figures
21	Police staff sickness	SPI 13.2	FCS	PRT - Delphi + Personnel - Staffing Figures
22	Overdue PDRs			Personnel
23	Minority ethnic officer recruitment	SPI 3.1		Personnel
23	Female officer representation	SPI 3.2		Personnel
23	NCRS compliance		FCS	Force Incident & Crime Registrar
23	Budget spend		FCS	Finance
23	Efficiency savings		FCS	Finance

### Specialist Operations - 7 OCU

24-25	Murder & domestic murder offences (SPI 5.4), CSI attendance, DNA & fingerprint identifications, forensic examinations major incidents, class A drug detections, kidnaps, abductions, blackmails			
-------	-------------------------------------------------------------------------------------------------------------------------------------------------------------------------------------------------	--	--	--

### Specialist Operations - 8 OCU

26	Patrol availability, pre-planned operations, ANPR operations, interventions in support of OCUs & Force Strategy			
----	-----------------------------------------------------------------------------------------------------------------	--	--	--

### Operational Services

27	Performance highlights relating to Operation Services Departments which include Call Management, Criminal Justice and Personnel and Training			
----	----------------------------------------------------------------------------------------------------------------------------------------------	--	--	--

### Victim focus

28-29	APACs indicators for user satisfaction, Victim Code compliance, victim support status			
-------	---------------------------------------------------------------------------------------	--	--	--

### Restricted data

30

FCS = Force Control Strategy

PRT = Performance Review Team

SPI - Statutory Performance Indicator

## Year to date performance matrix

This matrix is based on year to date comparison with 2007/2008 performance

		Target	Actual	
<b>Safer Neighbourhoods</b>	Overall satisfaction (data for rolling 12 months)	>62.0%	62.0%	
	Being kept informed (data for rolling 12 months)	>60.0%	48.0%	
	Confidence in local police	>58.3%	57.9%	
	Understanding community issues	>66.5%	66.8%	
	Perception of drug use in local area	<23.3%	26.4%	
	Assault with less serious injury*	-5.0%	-1.2%	
	OCU specific targets			
	Successful neighbourhood priorities	>33.0%	Pg 10	
	Anti-social use of motor vehicle	-5.0%	-20.9%	
	Anti-social behaviour	-5.0%	-6.0%	
	Reduce criminal damage	-12.0%	-9.1%	
	<b>Safer Neighbourhoods - targets achieved</b>			<b>4</b>
<b>Safeguard people</b>	Domestic violence incident arrest rate	>35.0%	33.9%	
	Repeat victims of domestic violence	-5.0%	10.9%	
	Hate crime detection rate	>45.0%	35.1%	
<b>Safeguard people - targets achieved</b>			<b>0</b>	
<b>Protect our communities</b>	Road traffic casualties	<470	429	
	<b>Protect our communities - targets achieved</b>		<b>1</b>	

Central	Isle of Wight	North & East	Portsmouth	Southampton	Western	Crime	Operations
63.0%	68.0%	60.0%	62.0%	59.0%	64.0%	N/A	
47.0%	54.0%	46.0%	47.0%	47.0%	49.0%	N/A	
Force level target - to exceed MSG average by 5% whilst not declining on current performance							
Force level target - to exceed MSG average by 3.5% whilst not declining on current performance							
Force level target - be under MSG average whilst not declining on current performance							
-1.5%	2.4%	1.4%	-1.8%	-3.1%	-1.6%	N/A	
-5.91%	-4.52%	0.00%	-4.00%	-8.69%	-4.21%	N/A	
Quarterly Data - See Page 10							N/A
-24.3%	-24.9%	-23.7%	-27.3%	-13.6%	-7.9%	N/A	
-9.1%	-6.6%	-1.1%	-7.9%	-1.5%	-10.5%	N/A	
-9.3%	-15.5%	-4.0%	-4.1%	-12.4%	-10.9%	N/A	
<b>3</b>	<b>4</b>	<b>1</b>	<b>3</b>	<b>2</b>	<b>3</b>		
34.8%	35.1%	37.4%	25.8%	29.2%	49.0%	N/A	
-6.5%	18.9%	32.7%	-10.9%	31.5%	18.5%	N/A	
38.3%	39.0%	33.5%	31.5%	33.7%	39.8%	N/A	
<b>1</b>	<b>1</b>	<b>1</b>	<b>1</b>	<b>0</b>	<b>1</b>		
Owned by Operations OCU							429
							<b>1</b>

## Year to date performance matrix cont'd

This matrix is based on year to date comparison with 2007/2008 performance

		Target	Actual	
Prevent, reduce and detect crime	Serious violent crime	-6.0%	-7.8%	
	Serious violent crime SD	>50.0%	50.1%	
	All crime*		-3.0%	-2.8%
		OCU specific targets		
	Serious acquisitive crime*		-2.0%	-4.8%
		OCU specific targets		
	Serious acquisitive crime SD	>15.0%	10.2%	
	Murder offences	<12	8	
	Asset recovery (shown in £1000s)	£3,114.5	£7,456.6	
	Class A drugs SD	>301	288	
<b>Prevent, reduce and detect crime - targets achieved</b>			<b>5</b>	
Organisational management	Police officer sickness	<5.63	6.03	
	Police staff sickness	<5.63	6.54	
	NCRS compliance	Good		N/A
		90.0%		
	Budget spend	<67%	64%	
	Efficiency savings	>£10m	£2.44m	
<b>Organisational management - targets achieved</b>			<b>1</b>	
<b>Force Total - targets achieved</b>			<b>11</b>	

Central	Isle of Wight	North & East	Portsmouth	Southampton	Western	Crime	Operations
9.7%	-17.5%	-19.7%	-16.1%	-10.8%	13.2%	N/A	
53.1%	72.3%	61.7%	42.4%	40.7%	51.9%	N/A	
-1.6%	-6.5%	0.0%	-2.8%	-5.4%	-2.6%	N/A	
-2.34%	-2.35%	-1.50%	-1.50%	-4.35%	-5.25%	N/A	
-5.0%	-8.1%	-1.4%	2.3%	-7.4%	-10.1%	N/A	
-1.39%	-2.11%	-2.38%	-1.36%	-2.27%	-2.48%	N/A	
12.0%	14.4%	8.7%	10.8%	9.2%	9.5%	N/A	
Owned by Crime OCU						8	Owned by Crime OCU
This is a Force measure							
Owned by Crime OCU						288	Owned by Crime OCU
2	4	2	2	3	2	1	
5.67	6.56	4.22	7.40	6.37	7.15	5.19	5.98
7.51	8.23	6.02	8.57	6.86	6.25	5.87	4.25
Fair	Fair	Fair	Poor	Poor	Fair	No data	N/A
82%	82%	84%	72%	64%	85%	No data	
66%	64%	68%	65%	65%	62%	68%	60%
This is a Force measure							
1	1	1	1	1	1	1	2
7	10	5	7	6	7	2	3

Note: Some areas contained within the Force Control Strategy and Force Target documents do not yet appear in the above matrix. This is because, to date, it has not been possible to establish sufficient baseline data to set a target. Work is ongoing in these areas to establish a baseline. Information in relation to our progress within these areas is contained within the detailed sections of the profile.

## Monthly performance matrix

This matrix is based on monthly data compared to force target

		Target	Actual	Central	Isle of Wight	North & East	Portsmouth	Southampton	Western	Crime	Operations	
Safer Neighbourhoods	Assault with less serious injury*	<1163	1187	245	88	195	174	318	167	N/A		
	OCU specific targets			246.0	79.0	204.9	163.1	284.5	185.6	N/A		
	Anti-social use of motor vehicle		<1410	807	159	43	134	88	189	167	N/A	
		OCU specific targets			302.5	94.5	269.4	139.0	252.2	279.6	N/A	
	Anti-social behaviour		<7843	6668	1310	460	1098	1200	1513	971	N/A	
		OCU specific targets			1647.1	575.0	1346.3	1227.5	1674.6	1246.5	N/A	
Reduce criminal damage		<2908	2690	609	208	503	371	538	461	N/A		
	OCU specific targets			635.5	228.1	523.9	362.1	620.4	537.9	N/A		
<b>Safer Neighbourhoods - targets achieved</b>			<b>3</b>	<b>4</b>	<b>3</b>	<b>4</b>	<b>2</b>	<b>3</b>	<b>4</b>			
Safeguard people	Domestic violent incident arrest rate	> 35.0%	30.3%	30.6%	30.8%	34.2%	24.2%	29.3%	35.0%	N/A		
	Hate crime detection rate	>45.0%	44.7%	52.4%	50.0%	47.8%	93.8%	16.0%	66.7%	N/A		
<b>Safeguard people - targets achieved</b>			<b>0</b>	<b>1</b>	<b>1</b>	<b>1</b>	<b>1</b>	<b>0</b>	<b>1</b>			
<b>Protect our communities - targets achieved</b>												
Prevent, reduce and detect crime	Serious violent crime	<75	86	18	6	13	22	19	8	N/A		
		OCU specific targets			13.0	7.0	12.6	14.4	21.1	6.6	N/A	
	Serious violent crime SD	>50.0%	50.0%	55.6%	50.0%	53.8%	54.5%	31.6%	62.5%	N/A		
	All crime*	<13588	12755	2551	827	2476	2017	2681	2203	N/A		
		OCU specific targets			2779.3	939.4	2551.9	2104.9	2871.8	2341.1	N/A	
	Serious acquisitive crime*	<1900	1838	280	85	390	401	354	328	N/A		
		OCU specific targets			336.3	80.7	371.6	311.7	422.7	377.4	N/A	
	Serious acquisitive crime SD	>15.0%	9.5%	28.2%	7.1%	3.6%	3.5%	6.8%	11.6%	N/A		
Asset recovery	£344,483	£0	This is Force measure									
Class A drugs SD	>33	35	Owned by Crime OCU									
<b>Prevent, reduce and detect crime - targets achieved</b>			<b>4</b>	<b>4</b>	<b>3</b>	<b>2</b>	<b>2</b>	<b>3</b>	<b>3</b>	<b>1</b>		
Organisational management	Police officer sickness	<0.63	0.93	0.79	1.01	0.57	1.20	1.11	0.87	0.78	1.16	
	Police staff sickness	<0.63	1.08	1.30	0.71	1.22	1.58	1.24	0.50	1.04	0.84	
<b>Organisational management - targets achieved</b>			<b>0</b>	<b>0</b>	<b>0</b>	<b>1</b>	<b>0</b>	<b>0</b>	<b>1</b>	<b>0</b>	<b>0</b>	
<b>Force Total - targets achieved</b>			<b>7</b>	<b>9</b>	<b>7</b>	<b>8</b>	<b>5</b>	<b>6</b>	<b>9</b>	<b>1</b>	<b>0</b>	

Note: Some areas contained within the Force Control Strategy and Force Target documents do not yet appear in the above matrix. This is because, to date, it has not been possible to establish sufficient baseline data to set a target. Work is on going in these areas to establish a baseline. Information in relation to our progress within these areas is contained within the detailed sections of this document.

## Notes to be read in conjunction with matrices

<b>All citizen focus data</b>	Based on "completely or very satisfied"
<b>OBTJ</b>	Offenders Brought To Justice
<b>Road traffic casualties</b>	All data until 30 September 2008
<b>Budget spend</b>	Data is always one month in arrears
<b>Efficiency savings</b>	3 year target of £30m, notionally £10m per year
<b>SD</b>	Sanction detections
<b>Anti-social use of motor vehicle &amp; behaviour</b>	Data is obtained from NSIR and always 1 month in arrears
<b>Sickness data</b>	Force Actual = total for ALL officers/police staff - including those not in OCU
<b>OCU specific targets</b>	OCU specific targets are rounded to 1 decimal place, the actual figure may therefore seem the same but appear red due to this rounding
<b>Asset recovery</b>	Asset recovery is the sum total of the values of cash forfeitures and confiscation orders
<b>* = variable targets across OCUs for these target areas based on previous performance and MSG position</b>	

## Safer neighbourhoods

### Overall satisfaction

Rolling 12 months data relates to: Jan 08 - Dec 08; rolling 3 months data relates to Oct 08 - Dec 08  
Overall satisfaction includes burglary, vehicle crime, violent crime and RTCs

Target 62%	Central	Isle of Wight	North & East	Portsmouth	Southampton	Western	Force	No. Surveys
Rolling 12 months	63%	68%	60%	62%	59%	64%	62%	8547
Rolling 3 months	65%	69%	61%	64%	60%	66%	64%	1732

### Being kept informed

Rolling 12 months data relates to: Jan 08 - Dec 08; rolling 3 months data relates to Oct 08 - Dec 08  
Being kept informed includes burglary, vehicle crime, violent crime and RTCs

Target 60%	Central	Isle of Wight	North & East	Portsmouth	Southampton	Western	Force	No. Surveys
Rolling 12 months	47%	54%	46%	47%	47%	49%	48%	8268
Rolling 3 months	54%	60%	49%	50%	53%	57%	53%	1668

### Comparative satisfaction of minority ethnic groups

Data relates to interviews which took place Jan 08 - Dec 08  
These figures are for overall satisfaction for burglary, vehicle crime, violent crime & RTCs; it excludes racist incidents

	Completely and very satisfied	Completely, very and fairly satisfied
White	62.4%	82.0%
Minority Ethnic	55.5%	78.2%

### Satisfaction of victims of racist incidents

These figures relate to interviews which took place Jan 08 - Dec 08; these will be updated quarterly  
Racist incident overall satisfaction = % completely or very satisfied

	Central	Isle of Wight	North & East	Portsmouth	Southampton	Western	Force
%	74%	40%	59%	57%	56%	71%	62%
Number of surveys	27	5	32	28	43	24	159

### British Crime Survey data

This data is updated by iQuanta approximately every quarter.

Data up to and including year ending June 2008	Confidence in local police		Understanding community issues		Targets MSG = Most Similar Group	
Avon & Somerset	48.8%		62.6%		Confidence in local police To exceed MSG by 5% whilst maintaining performance	Understanding community issues To exceed MSG by 3.5% whilst maintaining performance
Bedfordshire	51.5%		61.4%			
Essex	54.8%		62.5%			
Hampshire	57.9%	2nd in MSG	66.8%	2nd in MSG		
Hertfordshire	58.5%		67.1%			
Kent	48.4%		58.9%		Perception of drug use To be under MSG whilst maintaining performance	
Sussex	51.1%		61.7%			
Thames Valley	55.5%		62.9%			
MSG	53.3%		63.0%			

Data up to and including year ending June 2008	Perception of anti-social behaviour		Perception of drug use		Perception of drunk or rowdy behaviour	
Avon & Somerset	11.6%		20.8%		22.8%	
Bedfordshire	17.3%		27.5%		21.5%	
Essex	10.4%		16.9%		19.4%	
Hampshire	17.7%	8th in MSG	26.4%	6th in MSG	30.9%	8th in MSG
Hertfordshire	14.6%		22.8%		25.3%	
Kent	15.8%		21.4%		22.2%	
Sussex	13.6%		22.7%		21.2%	
Thames Valley	16.2%		27.8%		25.2%	
MSG	14.7%		23.3%		23.6%	

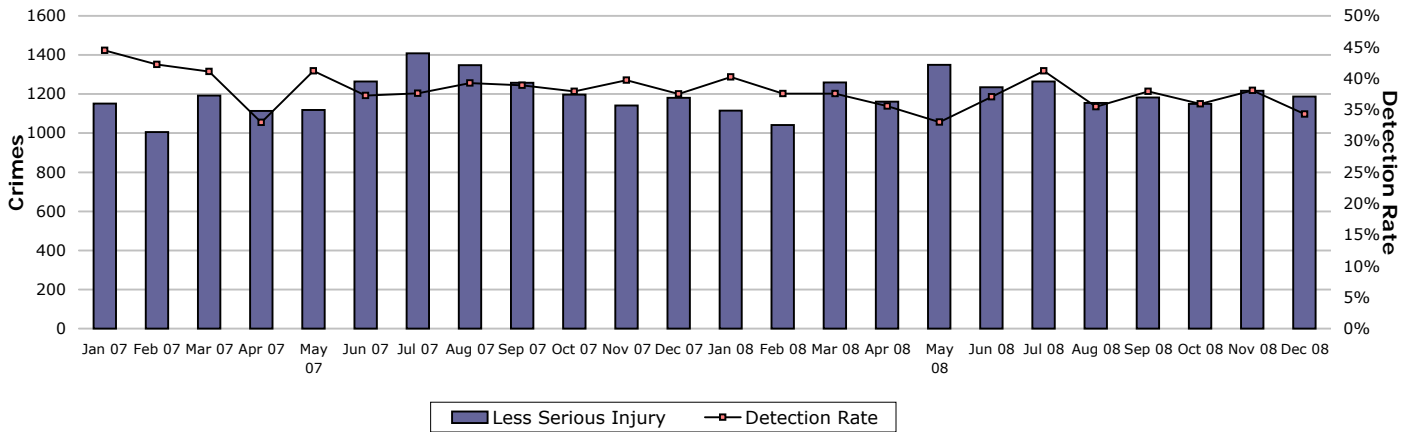
### The target for the three areas below is not to decline against previous performance

	Dec 2007	Mar 2008	Jun 2008	Sep 2008	Dec 2008
Confidence in local police	57.4%	57.4%	57.9%		
Understanding community issues	64.2%	65.5%	66.8%		
Perception of drug use	23.0%	23.0%	26.4%		

## Safer neighbourhoods

### Assault with less serious injury

Assault with less serious injury consists of crimsec codes 8G and 8J

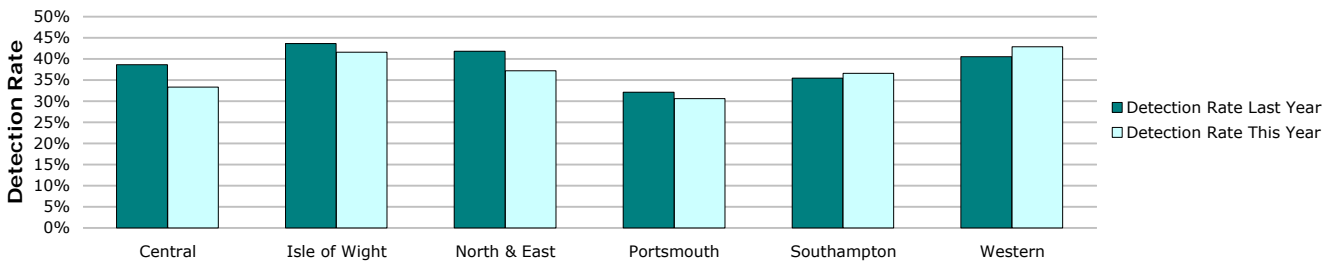


Crimes	Central	Isle of Wight	North & East	Portsmouth	Southampton	Western	Force
<b>YTD Crimes</b>	2271	<b>801</b>	1845	1588	2686	1705	<b>10896</b>
YTD Target	2182	701	1817	1446	2524	1646	<b>10315</b>
<b>YTD 07/08 Crimes</b>	2306	782	1819	1617	2773	1733	<b>11030</b>
This month	245	88	195	174	318	167	<b>1187</b>
% change from 07/08	-1.52%	2.43%	1.43%	-1.79%	-3.14%	-1.62%	<b>-1.21%</b>
MSG position	<b>15 of 15</b>	<b>11 of 15</b>	<b>12 of 15</b>	<b>7 of 9</b>	<b>15 of 15</b>	<b>10 of 15</b>	<b>8 of 8</b>



Detections	Central	Isle of Wight	North & East	Portsmouth	Southampton	Western	Force
<b>YTD Detection Rate</b>	33.33%	41.57%	37.18%	30.60%	36.60%	42.87%	<b>36.49%</b>
This month	27.76%	53.41%	37.95%	20.11%	32.39%	47.90%	<b>34.29%</b>
<b>YTD 07/08 Detections</b>	38.64%	43.61%	41.78%	32.10%	35.49%	40.51%	<b>38.05%</b>
MSG position	<b>15 of 15</b>	<b>13 of 15</b>	<b>12 of 15</b>	<b>6 of 9</b>	<b>11 of 15</b>	<b>9 of 15</b>	<b>7 of 8</b>

Note: Detections refer to Sanction Detections ONLY



## Safer neighbourhoods

### Successful neighbourhood priorities

Data provided up to Sept 08 - updated information should be available for publishing in January profile

Target = 33%	Central	Isle of Wight	North & East	Portsmouth	Southampton	Western	Force
Number of neighbourhoods	59	20	64	16	22	63	<b>244</b>
Number of priorities achieved	13	1	21	2	3	21	<b>61</b>
% of priorities achieved	22.0%	5.0%	32.8%	12.5%	13.6%	33.3%	<b>25.0%</b>

This data shows the number of neighbourhood priorities that have, over the last quarter, been successfully achieved. It should be remembered that limited value should be placed on this measure as it does not necessarily reflect community satisfaction with the police activity in support of the priorities. Work is still ongoing to capture this satisfaction level.

### Anti-social use of motor vehicle

**Data to be provided a month in arrears.** It is gathered using Altaris closing codes as the primary data source, then RMS as the secondary data source to gather incidents not recorded within Altaris.

The Force total does not add up to the sum of OCUs, this is due to Altaris incident logs which do not contain a geographic location.

	Central	Isle of Wight	North & East	Portsmouth	Southampton	Western	Force
<b>YTD Apr 08 to Nov 08</b>	2175	632	1883	939	2014	2341	<b>10353</b>
<b>YTD Apr 07 to Nov 07</b>	2872	841	2469	1292	2331	2542	<b>13092</b>
November	159	43	134	88	189	167	<b>807</b>
YTD Target	2460.1	768.8	2191.3	1130.4	2051.6	2274.2	<b>11467.3</b>
% v target	-11.6%	-17.8%	-14.1%	-16.9%	-1.8%	2.9%	<b>-9.7%</b>
% change from 07/08	-24.3%	-24.9%	-23.7%	-27.3%	-13.6%	-7.9%	<b>-20.9%</b>

Anti-social use of motor vehicle - relates to NSIR category Vehicle Nuisance/Inappropriate Use within the Anti-Social Behaviour Grouping

### Anti-social behaviour

**Data to be provided a month in arrears.** It is gathered using Altaris closing codes as the primary data source, then RMS as the secondary data source to gather incidents not recorded within Altaris.

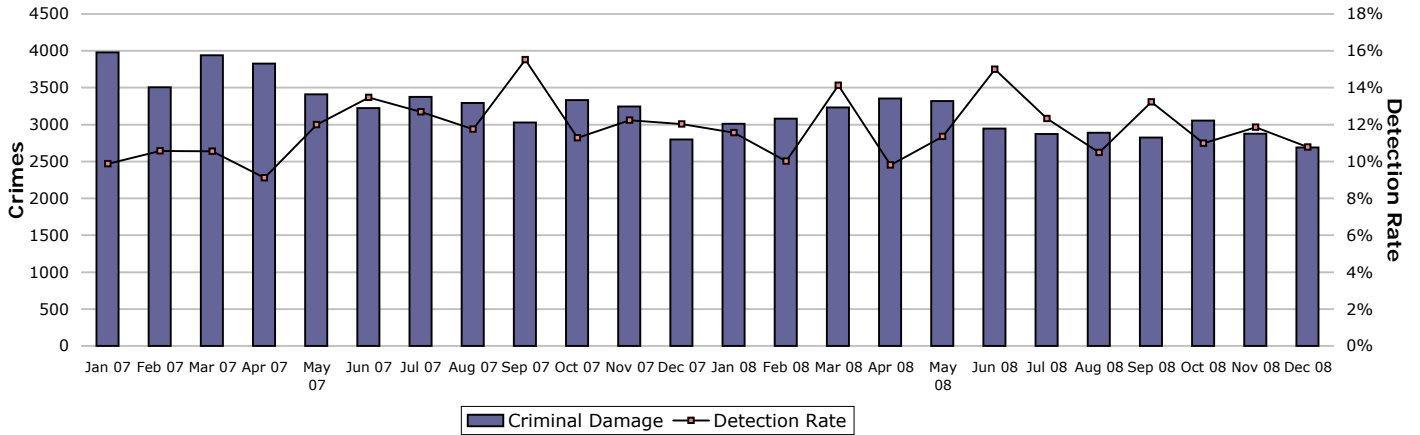
The Force total does not add up to the sum of OCUs, this is due to Altaris incident logs which do not contain a geographic location.

	Central	Isle of Wight	North & East	Portsmouth	Southampton	Western	Force
<b>YTD Apr 08 to Nov 08</b>	13883	4986	<b>12215</b>	10369	<b>15124</b>	10342	67958
<b>YTD Apr 07 to Nov 07</b>	15271	5339	12350	11253	15356	11552	<b>72263</b>
November	1310	460	1098	1200	1513	971	<b>6668</b>
YTD Target	13396.6	4676.8	10949.9	9983.3	13619.9	10138.4	<b>63791.6</b>
% v target	3.6%	6.6%	11.6%	3.9%	11.0%	2.0%	<b>6.5%</b>
% change from 07/08	-9.1%	-6.6%	-1.1%	-7.9%	-1.5%	-10.5%	<b>-6.0%</b>

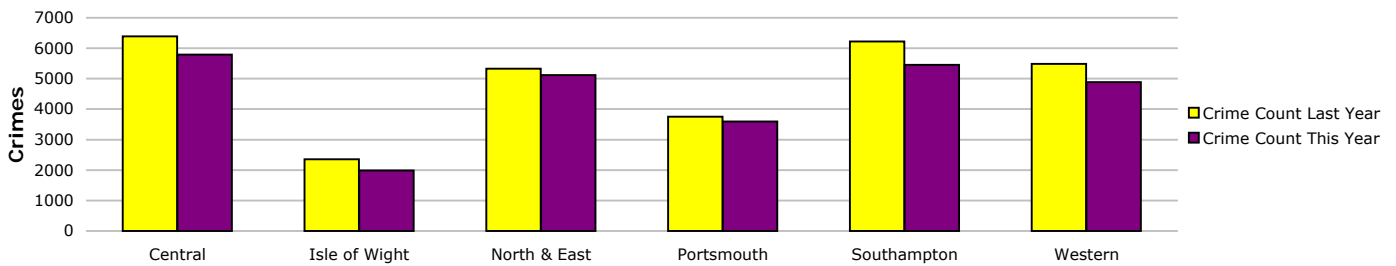
Anti-social behaviour - relates to NSIR categories Environmental Damage/Littering, Rowdy & Inconsiderate and Neighbours within the Anti-Social Behaviour Grouping

# Safer neighbourhoods

## Criminal damage

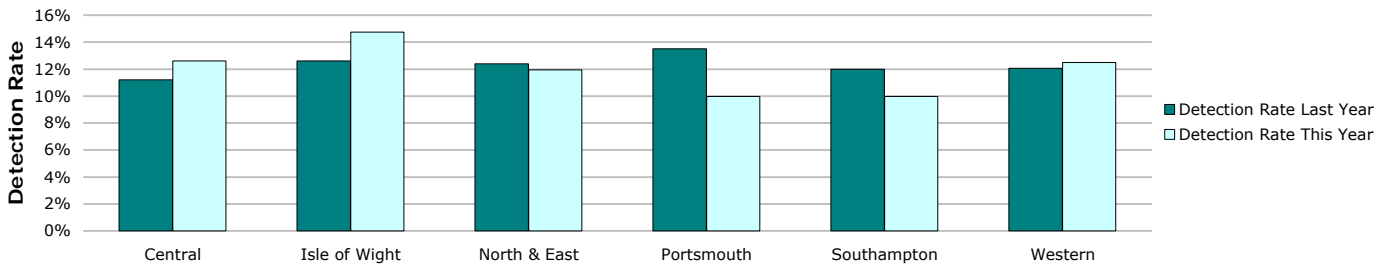


Crimes	Central	Isle of Wight	North & East	Portsmouth	Southampton	Western	Force
<b>YTD Crimes</b>	5793	1986	<b>5117</b>	<b>3594</b>	5454	4889	<b>26833</b>
YTD Target	5637	2024	4646	3212	5504	4771	<b>25794</b>
<b>YTD 07/08 Crimes</b>	6386	2350	5332	3749	6227	5489	<b>29533</b>
This month	609	208	503	371	538	461	<b>2690</b>
% change from 07/08	-9.29%	-15.49%	-4.03%	-4.13%	-12.41%	-10.93%	<b>-9.14%</b>
MSG position	<b>14 of 15</b>	<b>9 of 15</b>	<b>14 of 15</b>	<b>7 of 9</b>	<b>14 of 15</b>	<b>9 of 15</b>	<b>8 of 8</b>



Detections	Central	Isle of Wight	North & East	Portsmouth	Southampton	Western	Force
YTD Detection Rate	12.60%	14.75%	11.94%	9.96%	9.97%	12.48%	<b>11.72%</b>
This month	11.49%	12.98%	12.33%	7.82%	9.85%	10.63%	<b>10.78%</b>
<b>YTD 07/08 Detections</b>	11.20%	12.60%	12.40%	13.50%	12.00%	12.06%	<b>12.15%</b>
MSG position	<b>10 of 15</b>	<b>8 of 15</b>	<b>12 of 15</b>	<b>7 of 9</b>	<b>14 of 15</b>	<b>10 of 15</b>	<b>8 of 8</b>

Note: Detections refer to Sanction Detections ONLY



## Safeguard people

**Domestic violence** is defined by ACPO as: 'any incidence of threatening behaviour, violence or abuse (psychological, physical, sexual, financial or emotional) between adults, aged 18 and over, who are or have been intimate partners or family members, regardless of gender or sexuality'

### Domestic violence incident arrest rate

Domestic violence arrest rate is based on records where the occurrence has been flagged as a domestic, and has an arrest event or a linked person reason of arrested. This measure looks at all domestic incidents (not only crimes).

Target >35%

#### Year to Date

	Central	Isle of Wight	North & East	Portsmouth	Southampton	Western	Force
Domestic Incidents	3632	1178	2732	3014	3824	1804	<b>16184</b>
Domestic Incident Arrests	1263	414	1021	779	1118	884	<b>5479</b>
Domestic Incident Arrest Rate	34.77%	35.14%	37.37%	25.85%	29.24%	49.00%	<b>33.85%</b>

#### Month

	Central	Isle of Wight	North & East	Portsmouth	Southampton	Western	Force
Domestic Incidents	376	156	325	327	433	206	<b>1823</b>
Domestic Incident Arrests	115	48	111	79	127	72	<b>552</b>
Domestic Incident Arrest Rate	30.59%	30.77%	34.15%	24.16%	29.33%	34.95%	<b>30.28%</b>

### Domestic violence victimisation

Placeholder - This measure was a joint APACS and National Indicator Set measure looking at the work of MARACS. This measure was dropped from the 2008/09 APACS guidance, however is expected to be included in the 2009/10 guidance, at which time technical guidance will be published to enable reporting.

### Repeat victims of domestic violence

#### Incidents

	Central	Isle of Wight	North & East	Portsmouth	Southampton	Western	Force
YTD All Domestic Violence	3632	1178	2732	3014	3824	1804	<b>16184</b>
YTD 07/08 All Domestic Violence	3243	1083	2270	2919	3346	1987	<b>14848</b>
YTD Repeat Victims	1481	495	834	1608	1393	660	<b>6471</b>
YTD 07/08 Repeat Victims	1325	417	663	1458	948	676	<b>5487</b>
YTD % Repeat Victims	40.8%	42.0%	30.5%	53.4%	36.4%	36.6%	<b>40.0%</b>
YTD 07/08% Repeat Victims	40.9%	38.5%	29.2%	49.9%	28.3%	34.0%	<b>37.0%</b>

#### Crimes - Target -5% in repeat victims

	Central	Isle of Wight	North & East	Portsmouth	Southampton	Western	Force
YTD All Domestic Violence	1567	474	1172	969	1457	1027	<b>6666</b>
YTD 07/08 All Domestic Violence	1539	475	1061	1039	1352	991	<b>6457</b>
YTD Repeat Victims	373	113	268	271	447	224	<b>1696</b>
YTD 07/08 Repeat Victims	399	95	202	304	340	189	<b>1529</b>
YTD % Repeat Victims	23.8%	23.8%	22.9%	28.0%	30.7%	21.8%	<b>25.4%</b>
YTD 07/08% Repeat Victims	25.9%	20.0%	19.0%	29.3%	25.1%	19.1%	<b>23.7%</b>
% change in repeat victims from 07/08	-6.5%	18.9%	32.7%	-10.9%	31.5%	18.5%	<b>10.9%</b>

Note: Crimes are a subset of the incident data. This data reflects ALL crime types, and is not restricted to 'violent' offences

#### Crimes - This month

	Central	Isle of Wight	North & East	Portsmouth	Southampton	Western	Force
This month All Domestic Violence	184	58	130	125	193	112	<b>802</b>
This month Repeat Victims	41	9	34	30	60	25	<b>199</b>
This month % Repeat Victims	22.3%	15.5%	26.2%	24.0%	31.1%	22.3%	<b>24.8%</b>

### Domestic violence OBJT rate

The Office for Criminal Justice Reform is working on the breakdown as required within this Summary which will be available shortly. The Tier 3 "other offences" measure includes the domestic violence OBJT rate which currently cannot be individually extracted. The table below shows the percentage of persons brought to justice for "other offences" which includes domestic violence (DV) incidents against the total number of DV incidents.

OBJT Crime category	OBJT Rate						
	Apr 08	May 08	Jun 08	Jul 08	Aug 08	Sep 08	Rolling average
Tier 3: Other Offences	29%	24%	26%	32%	26%	28%	29%

## Safeguard people

### Hate crime detection rate

Hate Crime includes all crimes flagged within RMS with a Hate Crime indicator excluding those flagged purely as Police or Domestic.

Target >45%

#### Year to Date

	Central	Isle of Wight	North & East	Portsmouth	Southampton	Western	Force
Incidents	386	112	378	410	718	289	<b>2293</b>
Crimes	201	82	230	267	439	211	<b>1430</b>
Detections	77	32	77	84	148	84	<b>502</b>
Detection Rate	<b>38.31%</b>	<b>39.02%</b>	<b>33.48%</b>	<b>31.46%</b>	<b>33.71%</b>	<b>39.81%</b>	<b>35.10%</b>

#### Month

	Central	Isle of Wight	North & East	Portsmouth	Southampton	Western	Force
Incidents	23	8	27	25	68	23	<b>174</b>
Crimes	21	4	23	16	50	18	<b>132</b>
Detections	11	2	11	15	8	12	<b>59</b>
Detection Rate	52.38%	50.00%	47.83%	93.75%	<b>16.00%</b>	66.67%	44.70%

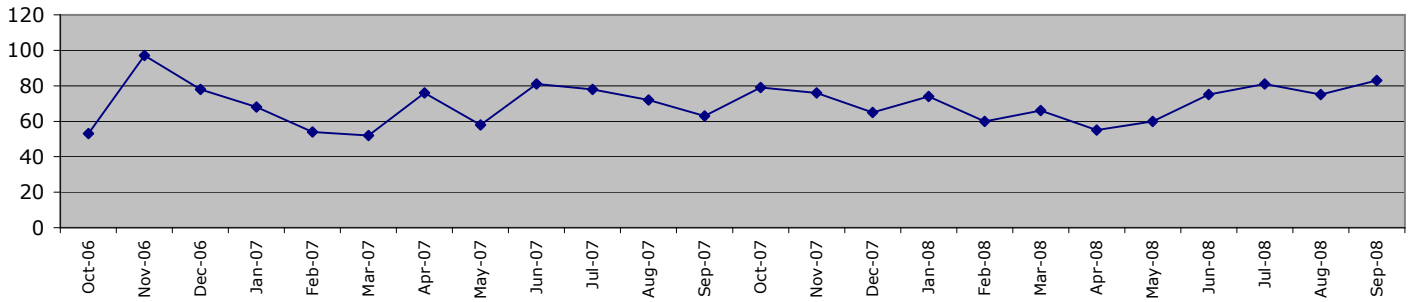
### Sexual offender reoffending rate

This indicator was contained within the draft APACS/National Indicator Set measures, however following national consultation this was removed from both sets. Hampshire has not yet identified how this target will be measured in the absence of technical guidance.

## Protect our communities

### Road traffic casualties

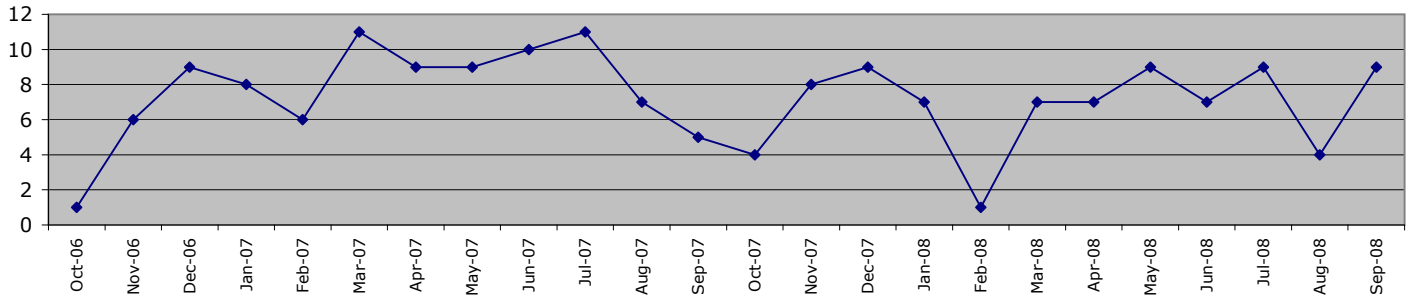
**Fatal/serious injury casualties - all victims**



The Force target 2008/2009 is for less than 938 casualties, which equates to less than 470 in 183 days      YTD Sept 2008 = 429 casualties

	Central	Isle of Wight	North&East	Portsmouth	Southampton	Western	Force
1 April 2008 - 30 September 2008	81	48	91	50	44	115	<b>429</b>
of these, fatalities were	8	5	3	4	2	15	<b>37</b>
1 April 2007 - 30 September 2007	116	35	93	35	29	120	<b>428</b>

**Fatal/serious injury casualties - victims under 16 years**



The DETR target is for a 50% reduction in child casualties by 2010 from 164 to 82 (Target 2008/2009 = 94)

	Central	Isle of Wight	North&East	Portsmouth	Southampton	Western	Force
1 April 2008 - 30 September 2008	8	7	8	6	8	8	<b>45</b>
of these, fatalities were	0	0	0	0	0	2	<b>2</b>
1 April 2007 - 30 September 2007	11	4	8	14	4	10	<b>51</b>

Note: YTD numbers may change as the accident record data are updated each month

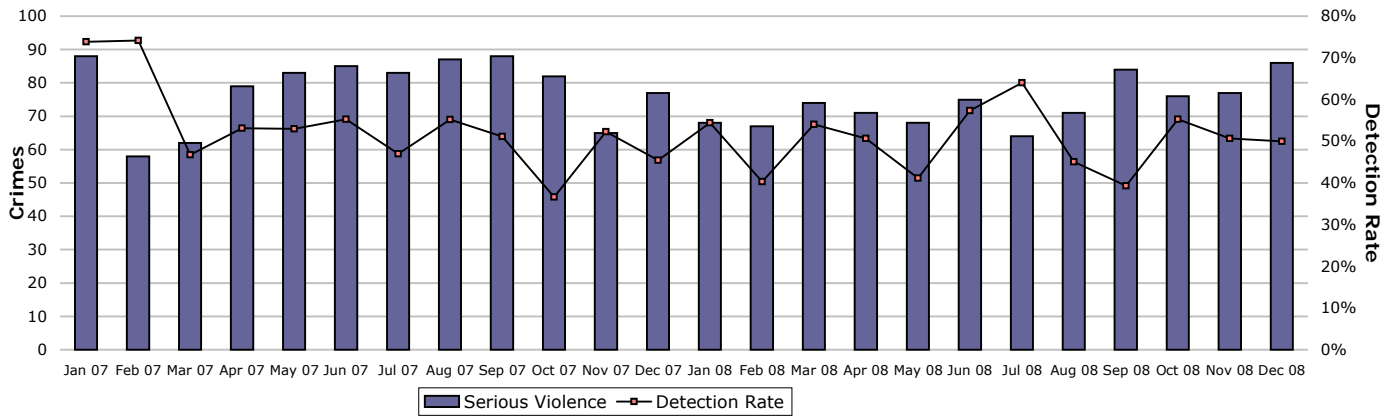
Note: The casualties in East Hampshire have all been attributed to North & East OCU in the absence of a breakdown by OCUs

Note: The latest information on the casualty data is that the location polygons were not right, and, as most of the reporting is done on location, this needed to be sorted out. Data input has been put on hold until the issue has been rectified.

# Prevent, reduce and detect crime

## Serious violent crime

Serious violent crime consists of crimsec codes 1, 2, 4.1-4.4, 4.6, 4.8, 5A, 5B, 5C, 8F, 8H and 37.1

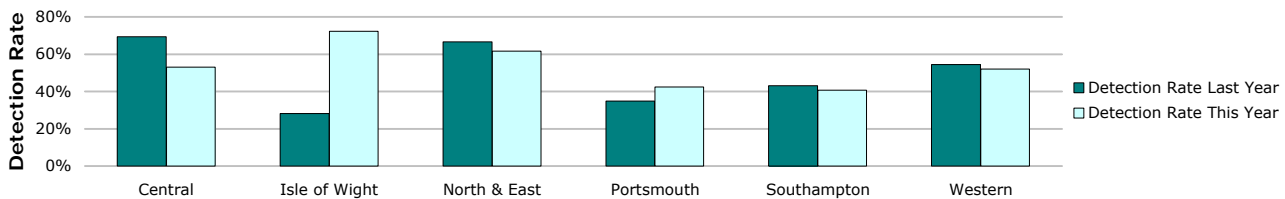


Crimes	Central	Isle of Wight	North & East	Portsmouth	Southampton	Western	Force
<b>YTD Crimes</b>	<b>147</b>	47	94	125	182	<b>77</b>	<b>672</b>
YTD Target	115	62	111	127	187	59	660
<b>YTD 07/08 Crimes</b>	134	57	117	149	204	68	<b>729</b>
This month	18	6	13	22	19	8	<b>86</b>
% change from 07/08	9.70%	-17.54%	-19.66%	-16.11%	-10.78%	13.24%	<b>-7.82%</b>
MSG position	<b>9 of 15</b>	<b>4 of 15</b>	<b>8 of 15</b>	<b>4 of 9</b>	<b>10 of 15</b>	<b>3 of 15</b>	<b>6 of 8</b>



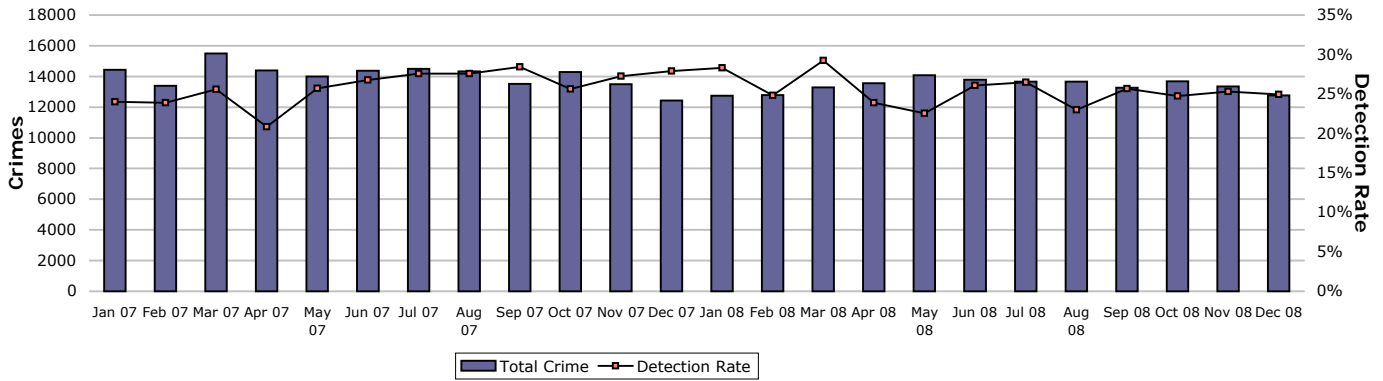
Detections	Central	Isle of Wight	North & East	Portsmouth	Southampton	Western	Force
Target >50%							
<b>YTD Detection Rate</b>	53.06%	72.34%	61.70%	<b>42.40%</b>	<b>40.66%</b>	51.95%	<b>50.15%</b>
This month	55.56%	50.00%	53.85%	54.55%	<b>31.58%</b>	62.50%	<b>50.00%</b>
<b>YTD 07/08 Detections</b>	69.40%	28.07%	66.67%	34.90%	43.14%	54.41%	<b>49.93%</b>
MSG position	<b>5 of 15</b>	<b>1 of 15</b>	<b>4 of 15</b>	<b>4 of 9</b>	<b>5 of 15</b>	<b>4 of 15</b>	<b>2 of 8</b>

Note: Detections refer to Sanction Detections ONLY



# Prevent, reduce and detect crime

## All crime

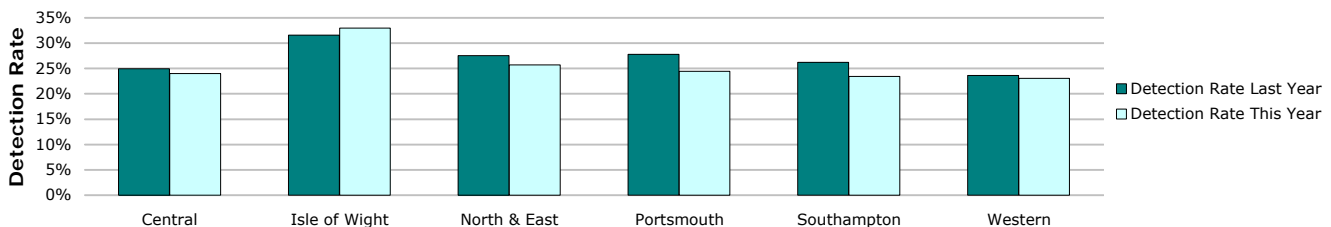


Crimes	Central	Isle of Wight	North & East	Portsmouth	Southampton	Western	Force
<b>YTD Crimes</b>	24670	8214	23035	18858	25275	21731	<b>121783</b>
YTD Target	24655	8333	22637	18672	25475	20768	<b>120540</b>
<b>YTD 07/08 Crimes</b>	25069	8785	23027	19398	26710	22314	<b>125303</b>
This month	2551	827	2476	2017	2681	2203	<b>12755</b>
% change from 07/08	-1.59%	-6.50%	0.03%	-2.78%	-5.37%	-2.61%	<b>-2.81%</b>
MSG position	<b>13 of 15</b>	<b>9 of 15</b>	<b>9 of 15</b>	<b>6 of 9</b>	<b>14 of 15</b>	<b>9 of 15</b>	<b>6 of 8</b>



Detections	Central	Isle of Wight	North & East	Portsmouth	Southampton	Western	Force
Target >25%							
<b>YTD Detection Rate</b>	24.03%	33.00%	25.70%	24.47%	23.45%	23.04%	<b>24.72%</b>
This month	27.52%	32.77%	26.49%	<b>19.19%</b>	<b>22.49%</b>	25.42%	<b>24.92%</b>
YTD 07/08 Detections	24.95%	31.60%	27.56%	27.79%	26.21%	23.61%	<b>26.37%</b>
MSG position	<b>13 of 15</b>	<b>5 of 15</b>	<b>11 of 15</b>	<b>3 of 9</b>	<b>11 of 15</b>	<b>15 of 15</b>	<b>5 of 8</b>

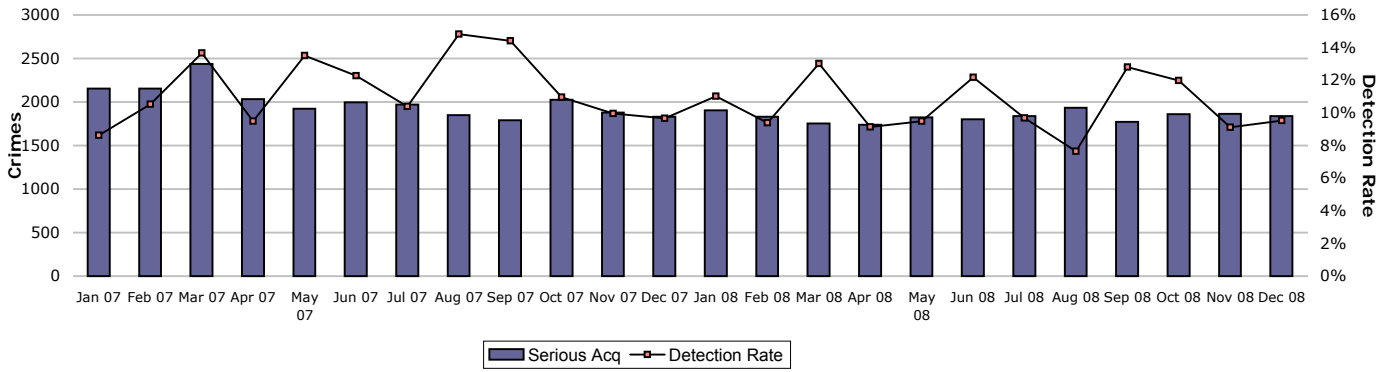
Note: Detections refer to Sanction Detections ONLY



# Prevent, reduce and detect crime

## Serious acquisitive crime

Serious acquisitive crime consists of crimsec codes 28, 29, 34A, 34B, 37/2, 45 and 48

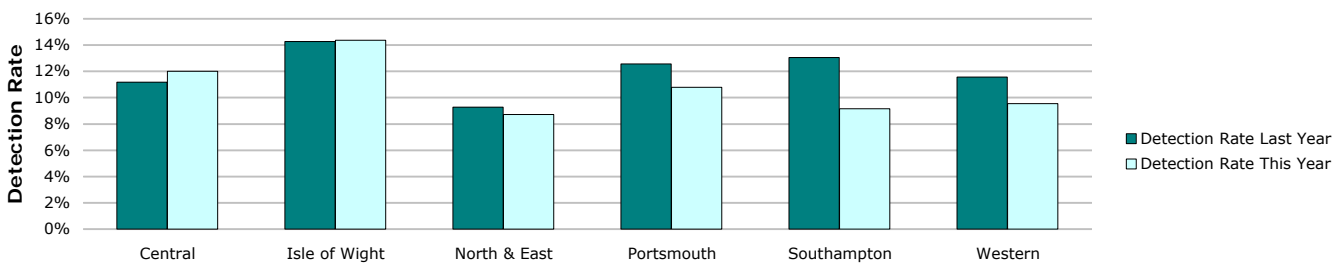


Crimes	Central	Isle of Wight	North & East	Portsmouth	Southampton	Western	Force
<b>YTD Crimes</b>	2855	689	3201	2996	3562	3166	16469
YTD Target	2983	716	3295	2765	3750	3348	16857
<b>YTD 07/08 Crimes</b>	3006	750	3245	2929	3845	3521	17296
This month	280	85	390	401	354	328	1838
% change from 07/08	-5.02%	-8.13%	-1.36%	2.29%	-7.36%	-10.08%	-4.78%
MSG position	3 of 15	1 of 15	6 of 15	3 of 9	5 of 15	8 of 15	2 of 8



Detections	Central	Isle of Wight	North & East	Portsmouth	Southampton	Western	Force
Target >15%							
<b>YTD Detection Rate</b>	12.01%	14.37%	8.72%	10.78%	9.15%	9.54%	10.15%
This month	28.21%	7.06%	3.59%	3.49%	6.78%	11.59%	9.52%
<b>YTD 07/08 Detections</b>	11.18%	14.27%	9.28%	12.56%	13.06%	11.56%	11.68%
MSG position	12 of 15	5 of 15	13 of 15	3 of 9	12 of 15	10 of 15	6 of 8

Note: Detections refer to Sanction Detections ONLY



## Prevent, reduce and detect crime

### Serious acquisitive crime breakdown

#### Robbery

Year to date	Central	Isle of Wight	North & East	Portsmouth	Southampton	Western	Force
Crimes	77	14	121	176	336	136	860
Trigger point	102	37	110	168	258	113	788
07/08 crimes	112	34	111	176	274	107	814
% change from 07/08	-31.25%	-58.82%	9.01%	0.00%	22.63%	27.10%	5.65%

Detection rate	32.47%	21.43%	19.83%	8.52%	14.58%	30.88%	18.37%
----------------	--------	--------	--------	-------	--------	--------	--------

December 2008	Central	Isle of Wight	North & East	Portsmouth	Southampton	Western	Force
Crimes	3	3	17	20	28	23	94
Detection rate	33.33%	0.00%	5.88%	5.00%	14.29%	60.87%	22.34%

#### Dwelling burglary

Year to date	Central	Isle of Wight	North & East	Portsmouth	Southampton	Western	Force
Crimes	796	239	1051	1068	685	744	4583
Trigger point	711	204	793	755	731	678	3871
07/08 crimes	714	235	753	806	750	710	3968
% change from 07/08	11.48%	1.70%	39.58%	32.51%	-8.67%	4.79%	15.50%

Detection rate	18.47%	23.85%	12.75%	13.39%	19.42%	17.07%	16.17%
----------------	--------	--------	--------	--------	--------	--------	--------

December 2008	Central	Isle of Wight	North & East	Portsmouth	Southampton	Western	Force
Crimes	77	30	175	165	75	76	598
Detection rate	74.03%	16.67%	1.71%	4.24%	4.00%	7.89%	13.55%

#### Vehicle crime

Year to date	Central	Isle of Wight	North & East	Portsmouth	Southampton	Western	Force
Crimes	1982	436	2029	1752	2541	2286	11026
Trigger point	2170	474	2390	1841	2760	2557	12193
07/08 crimes	2180	481	2381	1947	2821	2704	12514
% change from 07/08	-9.08%	-9.36%	-14.78%	-10.02%	-9.93%	-15.46%	-11.89%

Detection rate	8.63%	8.94%	5.96%	9.42%	5.67%	5.82%	7.01%
----------------	-------	-------	-------	-------	-------	-------	-------

December 2008	Central	Isle of Wight	North & East	Portsmouth	Southampton	Western	Force
Crimes	200	52	198	216	251	229	1146
Detection rate	10.50%	1.92%	5.05%	2.78%	6.77%	7.86%	6.37%

#### Theft of a Motor Vehicle

Year to date	Central	Isle of Wight	North & East	Portsmouth	Southampton	Western	Force
Crimes	426	96	546	413	611	444	2536
Detection rate	22.30%	26.04%	12.27%	24.94%	14.57%	17.57%	18.02%

December 2008	Central	Isle of Wight	North & East	Portsmouth	Southampton	Western	Force
Crimes	38	6	60	50	77	41	272
Detection rate	23.68%	16.67%	16.67%	10.00%	18.18%	21.95%	17.65%

#### Theft from a Motor Vehicle

Year to date	Central	Isle of Wight	North & East	Portsmouth	Southampton	Western	Force
Crimes	1556	340	1483	1339	1930	1842	8490
Detection rate	4.88%	4.12%	3.64%	4.63%	2.85%	2.99%	3.72%

December 2008	Central	Isle of Wight	North & East	Portsmouth	Southampton	Western	Force
Crimes	162	46	138	166	174	188	874
Detection rate	7.41%	0.00%	0.00%	0.60%	1.72%	4.79%	2.86%

Robbery, burglary and vehicle crime are the component parts of serious acquisitive crime. These individual crime types do not have targets. Trigger points are included here; these add up to the serious acquisitive target and are calculated based on the breakdown of these crimes in 07/08.

## Prevent, reduce and detect crime

### Gun crime rate

	Central	Isle of Wight	North & East	Portsmouth	Southampton	Western	Force
YTD December 2008	22	2	27	14	19	15	<b>99</b>
YTD December 2007	19	8	25	13	17	15	<b>97</b>
% change from 07/08	15.8%	-75.0%	8.0%	7.7%	11.8%	0.0%	<b>2.1%</b>

Gun crime figures published reflect the APACS technical definition for 2008/09 which differs from that used in 2007/08. Manual checking has been undertaken to try to provide comparative 2007/08 figures, however it is not possible to provide completed comparable figures. In 2008/09 gun crime includes "where the victim is convinced of the presence of a firearm, even if it is concealed and there is evidence of the suspect's intention to create this impression"; these occurrences were not included in previously published 2007/08 data.

### Knife crime rate

	Central	Isle of Wight	North & East	Portsmouth	Southampton	Western	Force
YTD December 2008	107	26	96	85	168	67	<b>549</b>
YTD December 2007	104	27	110	143	165	66	<b>615</b>
% change from 07/08	2.9%	-3.7%	-12.7%	-40.6%	1.8%	1.5%	<b>-10.7%</b>

**Knife** = knife or other sharp instrument (including broken glass/bottles) piercing the skin or, for threats and attempts, instruments normally capable of piercing the skin

Knife crime figures published reflect the APACS technical definition for 2008/09 which differs from that used in 2007/08. Manual checking has been undertaken to try to provide comparative 2007/08 figures, however it is not possible to provide completed comparable figures. In 2008/09 knife crime includes "where the victim is convinced of the presence of a knife, even if it is concealed and there is evidence of the suspect's intention to create this impression"; these occurrences were not included in previously published 2007/08 data.

### Serious sexual crime OBJ rate

The table below shows % of persons brought to justice for serious sexual crimes against the total number of serious sexual crimes

OBJT Crime category	OBJT Rate						
	Apr 2008	May 2008	Jun 2008	Jul 2008	Aug 2008	Sep 2008	Rolling average
Tier 1: Serious Sexual Offences	36%	14%	53%	36%	35%	37%	38%

### Murder offences

2008/2009 target = <16 murder offences

	Central	Isle of Wight	North & East	Portsmouth	Southampton	Western	Force
YTD December 2008	2	0	1	1	3	1	<b>8</b>
YTD December 2007	3	0	3	4	2	2	<b>14</b>
% change from 07/08							<b>-42.9%</b>

For more information, please go to the Specialist Operations - 7 OCU page

### Asset recovery

Asset recovery is the sum total of the values of cash forfeitures and confiscation orders

	Central	Isle of Wight	North & East	Portsmouth	Southampton	Western	Force
April 2008	£38,187.90	£0.00	£18,413.50	£0.00	£0.00	£0.00	<b>£56,601.40</b>
May 2008	£0.00	£0.00	£0.00	£0.00	£69,735.00	£0.00	<b>£69,735.00</b>
June 2008	£76,739.37	£0.00	£146,538.50	£0.00	£8,676.00	£4,693.00	<b>£236,646.87</b>
July 2008	£0.00	£0.00	£0.00	£1,104.00	£2,035.00	£2,100.00	<b>£5,239.00</b>
August 2008	£0.00	£0.00	£22,699.60	£0.00	£15,469.55	-£19,520.00	<b>£18,649.15</b>
September 2008	£0.00	£0.00	£1,175.00	£4,447.95	£221,549.03	£21,427.00	<b>£248,598.98</b>
October 2008	£9,273.38	£1,956.76	£60,660.00	£5,400.00	£0.00	£0.00	<b>£77,290.14</b>
November 2008	£0.00	£7,930.00	£1,710.00	£1,250.00	£22,012.77	£0.00	<b>£32,902.77</b>
December 2008	£0.00	£0.00	£0.00	£0.00	£0.00	£0.00	<b>£0.00</b>
Cumulative total	<b>£124,200.65</b>	<b>£9,886.76</b>	<b>£251,196.60</b>	<b>£12,201.95</b>	<b>£339,477.35</b>	<b>£8,700.00</b>	<b>£745,663.31</b>

### Prolific and other Priority Offenders (PPOs) convictions

Number of convictions recorded against identified, prolific and other priority offenders

Convictions	Jul 2008	Aug 2008	Sep 2008	Oct 2008
Persistent Young Offenders	122	No data	74	86
Priority Prolific Offenders	18	No data	20	35
Persistent Priority Prolific Young Offenders	1	No data	2	1
Young Offenders	209	No data	194	156

Note: The August 2008 data is not available due to issues with the Criminal Justice Management Information System (CJMIS)

Note: Due to issues with CJMIS it is not possible to provide more up to date information at this time.

### Class A drugs sanction detections

	Central	Isle of Wight	North & East	Portsmouth	Southampton	Western	YTD December 2008 target			
							Crime	Operations	No OIC	Force
YTD December 2008	15	37	68	21	59	40	37	1	10	<b>288</b>
YTD December 2007	29	22	47	20	28	42	30	7	10	<b>235</b>

### Drug Intervention Measures (DIMs)

	Central	Isle of Wight	North & East	Portsmouth	Southampton	Western	Crime	Force
YTD December 2008	No data received							<b>0</b>
YTD December 2007	6	17	58	9	28	13	1	<b>132</b>
% change from 07/08	No data received							<b>0</b>

Note: The large variance between YTD 2007 and YTD 2008 is partially due to changes in the process for submissions up until Sept 07

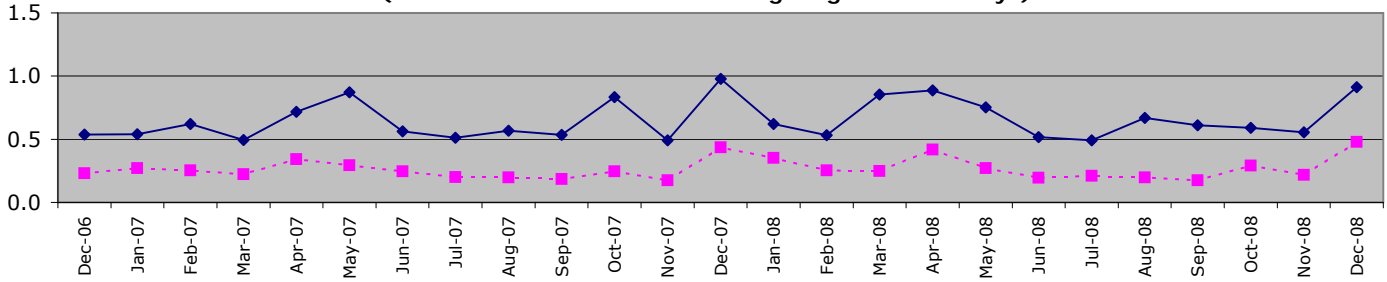
## Organisational management

All Police officer sickness YTD = **6.03**

All Police officer sickness Dec = **0.93**

### Police officers in OCUs

**Sickness and injury absence days per officer by month  
(broken line shows data excluding long-term sick days)**

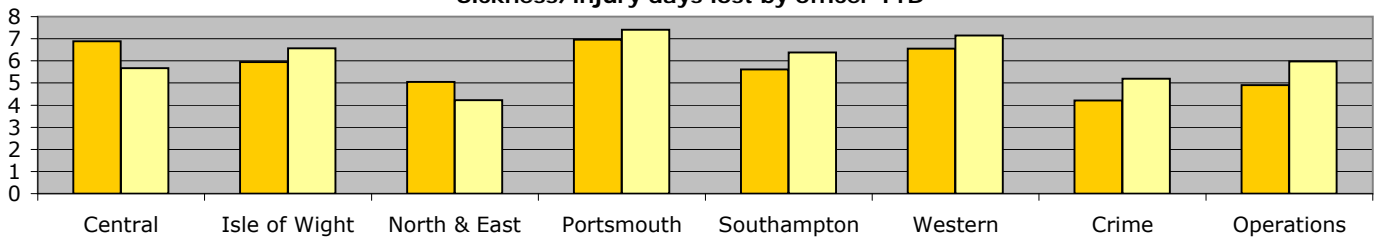


Force target for 08/09 = 7.5 days or fewer per officer (5.63 for 9 months) **YTD = 5.98 days lost per officer**

	Central	Isle of Wight	North & East	Portsmouth	Southampton	Western	Crime	Operations	OCU Totals
YTD Apr 08 - December 08	5.67	<b>6.56</b>	4.22	<b>7.40</b>	<b>6.37</b>	<b>7.15</b>	5.19	5.98	<b>5.98</b>
YTD Apr 07 - December 07	6.88	5.95	5.05	6.95	5.62	6.55	4.21	4.91	<b>5.81</b>
This month	0.79	1.01	0.57	1.20	1.11	0.87	0.78	1.16	<b>0.91</b>
% change	-17.7%	10.3%	-16.5%	6.5%	13.4%	9.1%	23.1%	21.8%	<b>2.9%</b>

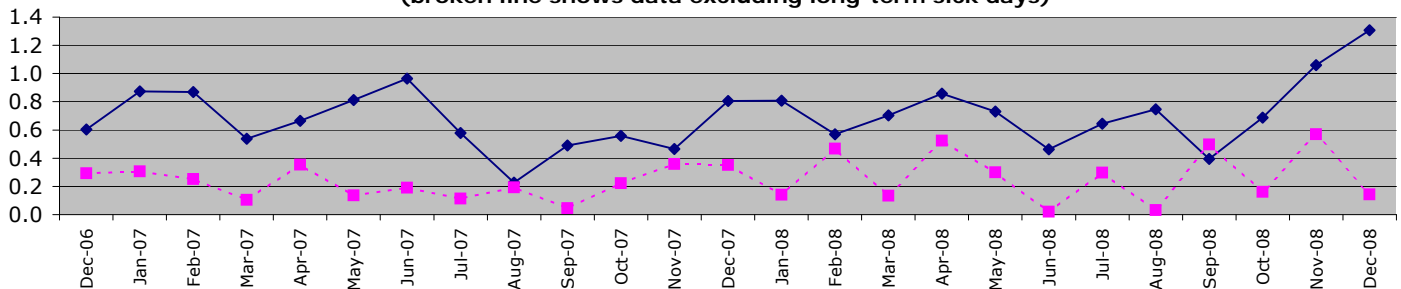
"Operations" includes SO Portfolio and Projects Staff

**Sickness/injury days lost by officer YTD**



### Police officers not in OCUs

**Sickness and injury absence days per police officer by month  
(broken line shows data excluding long-term sick days)**

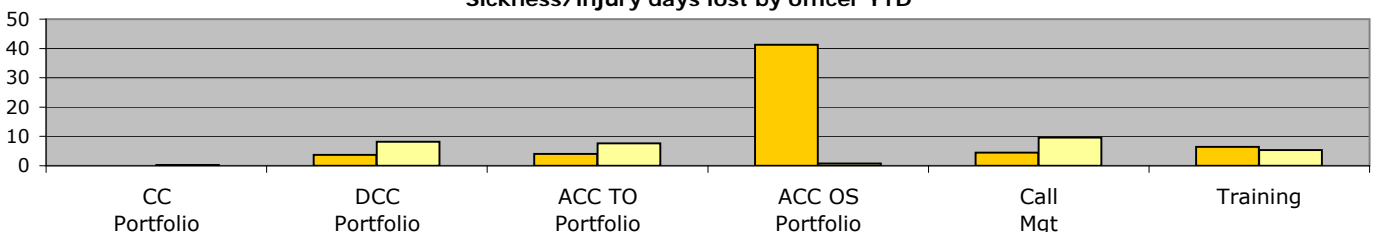


Force target for 08/09 = 7.5 days or fewer per officer (5.63 for 9 months) **YTD = 6.87 days lost per officer**

	CC Portfolio	DCC Portfolio	ACC TO Portfolio	ACC OS Portfolio	DoF Portfolio	Call Mgt	Training	Non-OCU Totals
YTD Apr 08 - December 08	0.18	<b>8.20</b>	<b>7.63</b>	0.73	N/A	<b>9.61</b>	5.35	<b>6.87</b>
YTD Apr 07 - December 07	0.00	3.68	4.01	41.26	N/A	4.49	6.44	<b>5.77</b>
This month	0.00	1.44	1.50	0.00	N/A	1.54	1.30	<b>1.31</b>
% change	N/A	123.2%	90.0%	-98.2%	N/A	114.1%	-17.0%	<b>19.1%</b>

ACC OS Portfolio excludes Call Mgt & Training figures which are reported on separately. No police officers work within DoF Portfolio.

**Sickness/injury days lost by officer YTD**





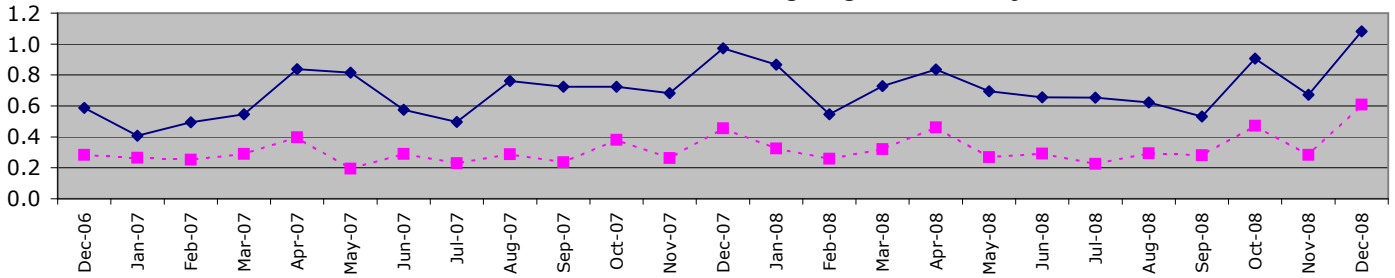
## Organisational management

All Police staff sickness YTD = **6.54**

All Police staff sickness Dec = **1.08**

### Police staff in OCU's

**Sickness and injury absence days per police staff member by month  
(broken line shows data excluding long-term sick days)**

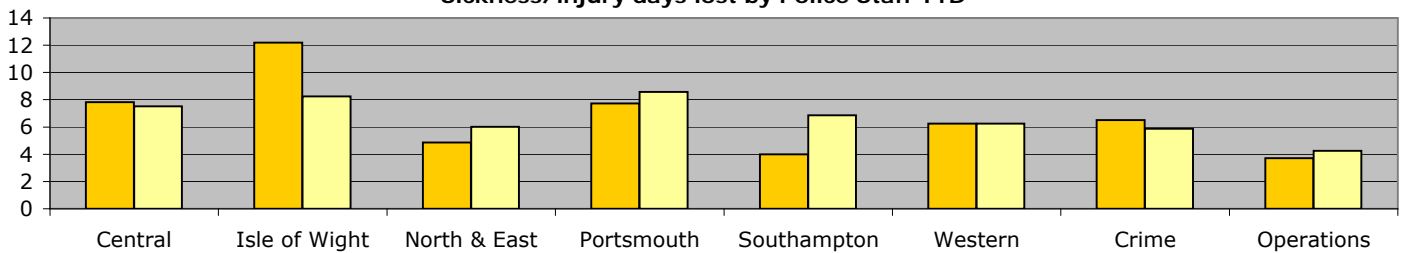


Force target for 08/09 = 7.5 days or fewer per staff (5.63 for 9 months) **YTD = 6.65 days lost per staff member**

	Central	Isle of Wight	North & East	Portsmouth	Southampton	Western	Crime	Operations	OCU Totals
YTD Apr 08 - December 08	<b>7.51</b>	<b>8.23</b>	<b>6.02</b>	<b>8.57</b>	<b>6.86</b>	<b>6.25</b>	<b>5.87</b>	<b>4.25</b>	<b>6.65</b>
YTD Apr 07 - December 07	7.81	12.18	4.86	7.74	3.99	6.26	6.50	3.72	<b>6.40</b>
This month	1.30	0.71	1.22	1.58	1.24	0.50	1.04	0.84	<b>1.08</b>
% change	-3.9%	-32.4%	23.9%	10.7%	71.8%	-0.1%	-9.8%	14.3%	<b>3.9%</b>

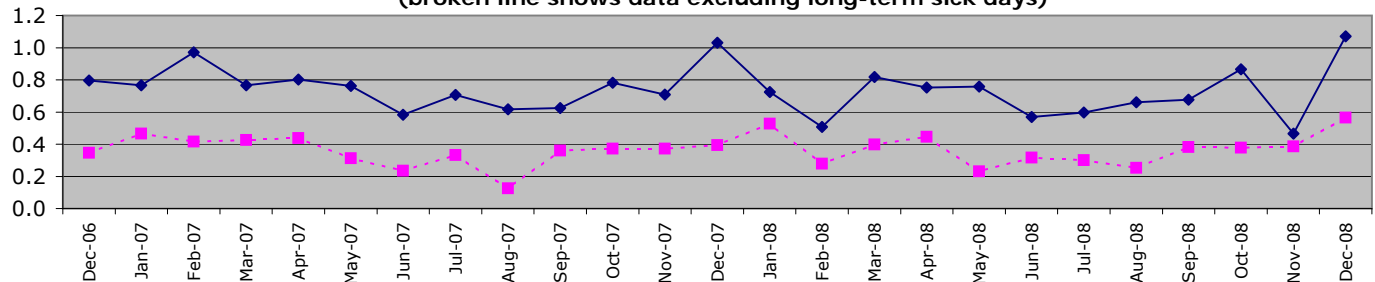
"Operations" includes SO Portfolio and Projects Staff

**Sickness/injury days lost by Police Staff YTD**



### Police staff not in OCU's

**Sickness and injury absence days per police staff member by month  
(broken line shows data excluding long-term sick days)**

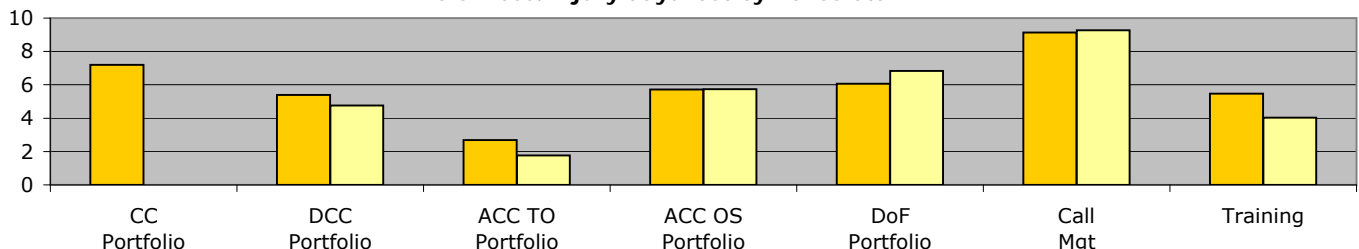


Force target for 08/09 = 7.5 days or fewer per staff (5.63 for 9 months) **YTD = 6.41 days lost per staff member**

	CC Portfolio	DCC Portfolio	ACC TO Portfolio	ACC OS Portfolio	DoF Portfolio	Call Mgt	Training	Non-OCU Totals
YTD Apr 08 - December 08	<b>0.00</b>	<b>4.76</b>	<b>1.77</b>	<b>5.73</b>	<b>6.83</b>	<b>9.26</b>	<b>4.03</b>	<b>6.41</b>
YTD Apr 07 - December 07	7.20	5.39	2.69	5.72	6.07	9.15	5.46	<b>6.68</b>
This month	0.00	1.11	0.64	1.00	0.91	1.23	1.02	<b>1.07</b>
% change	-100.0%	-11.7%	-34.2%	0.2%	12.6%	1.3%	-26.3%	<b>-4.0%</b>

ACC OS Portfolio excludes Call Mgt & Training figures which are reported on separately.

**Sickness/injury days lost by Police Staff YTD**

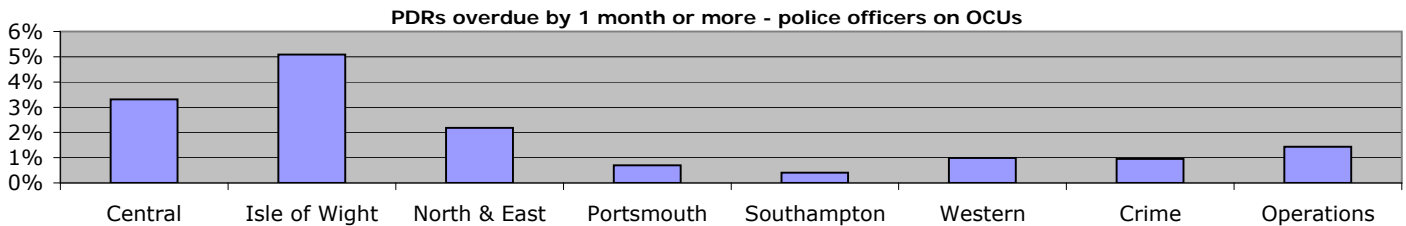




# Organisational management

## Overdue PDRs

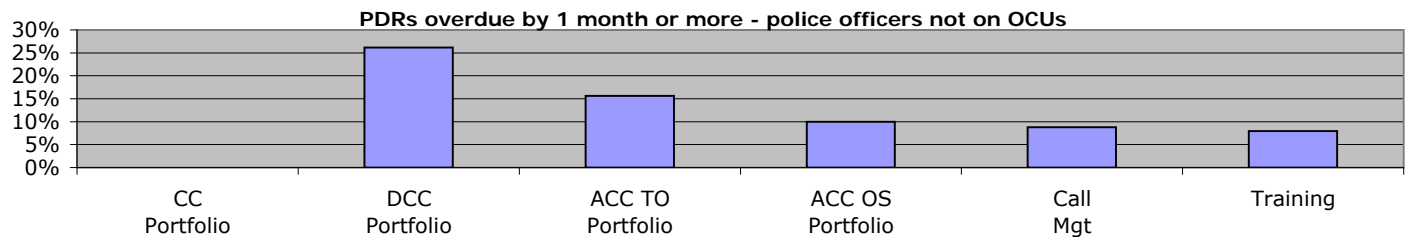
### Police officer PDRs - police officers in OCUs



December 2008	Central	Isle of Wight	North & East	Portsmouth	Southampton	Western	Crime	Operations
Population	634	216	551	427	491	506	420	418
Overdue	21	11	12	3	2	5	4	6
% overdue	3.3%	5.1%	2.2%	0.7%	0.4%	1.0%	1.0%	1.4%

"Operations" includes SO Portfolio and Projects Staff

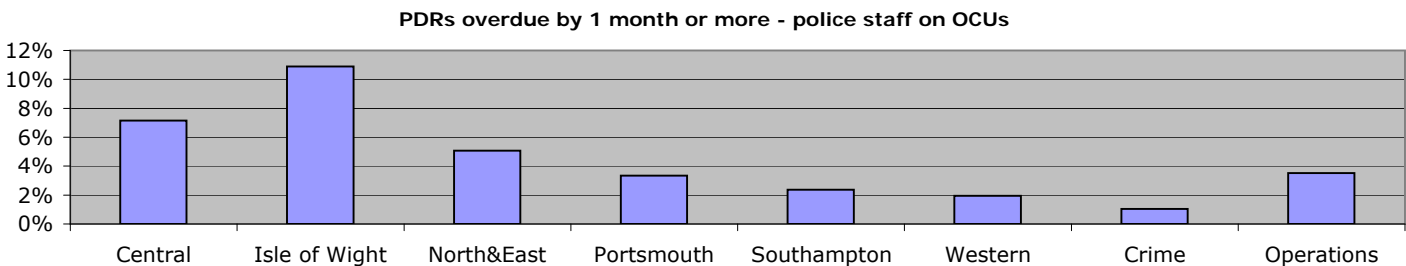
### Police officer PDRs - police officers not on OCUs



December 2008	CC Portfolio	DCC Portfolio	ACC TO Portfolio	ACC OS Portfolio	DoF Portfolio	Call Mgt	Training
Population	8	42	32	10	N/A	34	63
Overdue	0	11	5	1	N/A	3	5
% overdue	0.0%	26.2%	15.6%	10.0%	N/A	8.8%	7.9%

ACC OS Portfolio excludes Call Mgt & Training figures which are reported on separately. No police officers work within DoF Portfolio

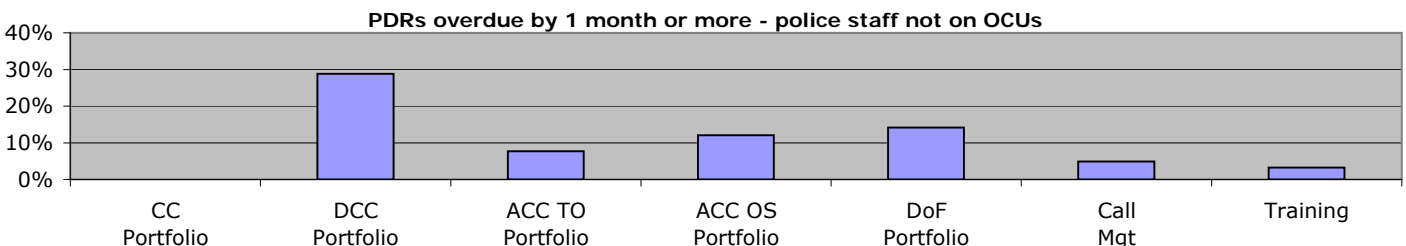
### Police staff PDRs - police staff in OCUs



December 2008	Central	Isle of Wight	North&East	Portsmouth	Southampton	Western	Crime	Operations
Population	238	101	197	180	211	206	291	142
Overdue	17	11	10	6	5	4	3	5
% overdue	7.1%	10.9%	5.1%	3.3%	2.4%	1.9%	1.0%	3.5%

"Operations" includes SO Portfolio and Projects Staff

### Police staff PDRs - police staff not in OCUs



December 2008	CC Portfolio	DCC Portfolio	ACC TO Portfolio	ACC OS Portfolio	DoF Portfolio	Call Mgt	Training
Population	1	330	39	432	148	410	94
Overdue	0	95	3	52	21	20	3
% overdue	0.0%	28.8%	7.7%	12.0%	14.2%	4.9%	3.2%

ACC OS Portfolio excludes Call Mgt & Training figures which are reported on separately

## Organisational management

### Minority Ethnic Officer Recruitment

	All recruits	Minority ethnic recruits	%
YTD December 2008	65	1	1.5%

### Female Officer Representation

	Male strength	Female strength	%
YTD December 2008	2766.1	1018.3	26.9%

### NCRS compliance

	Central	Isle of Wight	North & East	Portsmouth	Southampton	Western	Crime
NCRS audits	Fair 82%	Fair 82%	Fair 84%	Poor 72%	Poor 64%	Fair 85%	No data

Note: NCRS audit data relates to a rolling 12 mth period

Self-Inspection	91.0%	85.0%	80.0%	66.0%	81.0%	90.0%	No data
-----------------	-------	-------	-------	-------	-------	-------	---------

Note: Self-Inspections - only appealed records are moderated by the Force Crime Registrar

### Budget spend

The actual spend to the end of October 2008 was £163.6m. This gives a projected spend for the force at the end of the financial year of £294.3m, which will be an overspend of £1.8m against the agreed budget.

The force is taking measures to eliminate this overspend during the course of the current financial year.

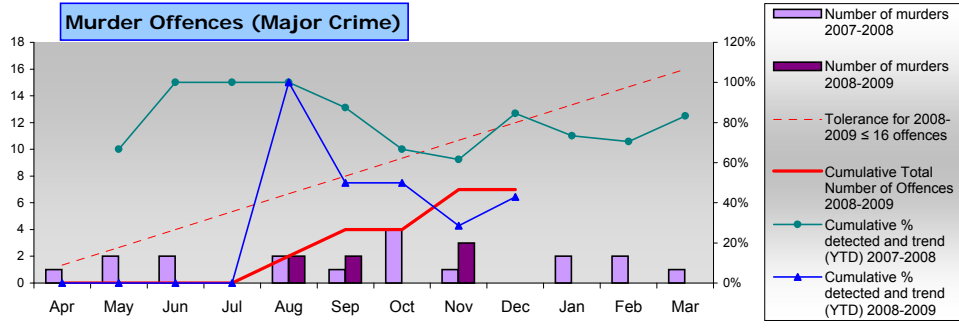
	Central	Isle of Wight	North & East	Portsmouth	Southampton	Western	Crime	Operations
Projected overspend 2008/2009	£28,000	-£155,000	£696,000	£679,000	-£17,000	-£28,000	£141,000	£423,000

### Efficiency savings

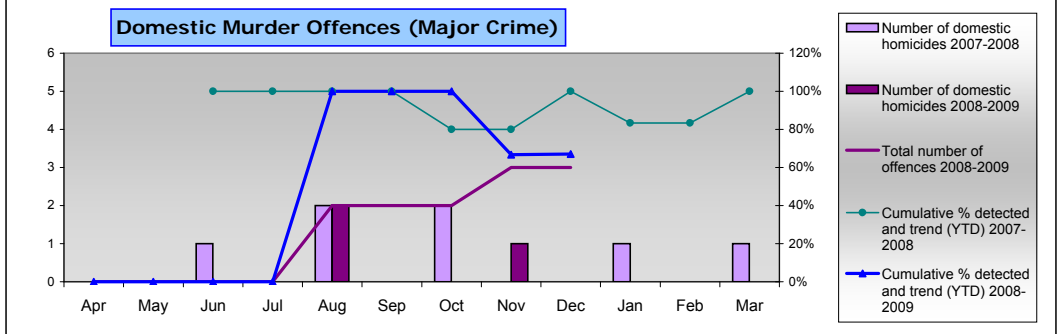
The Authority needs to maximise efficiency gains both due to its budgetary constraints and in order to achieve value for money. In addition, there is a Home Office target to deliver recurring efficiency or productivity gains equivalent to 9.3% (some £30m) of the Authority's 2007/08 'Gross Revenue Expenditure' by the end of 2010/11. The Authority and Force are working to achieve, and if possible exceed, the target through initiatives identified and monitored by the Efficiency Strategy Group.

An efficiency saving register that is used as a tracking tool is now monitoring progress of ongoing efficiency initiatives valued at £15.6m across the current and future financial years. Some of the initiatives listed are not in a position yet to quantify the potential efficiency savings deliverable. It will be seen that there are also a number of initiatives listed on the register which are only at the start up stage of the project life cycle and are unlikely to deliver productivity gains within the required timeframe: they are nonetheless important as efficiency is an ongoing long term requirement.

**Murder Offences (Major Crime)**



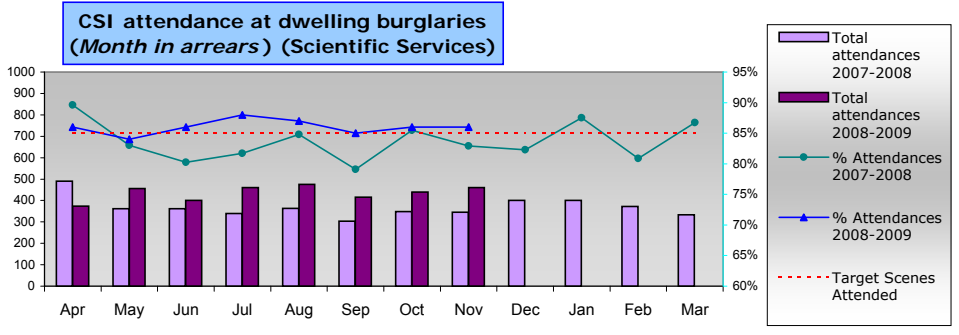
**Domestic Murder Offences (Major Crime)**



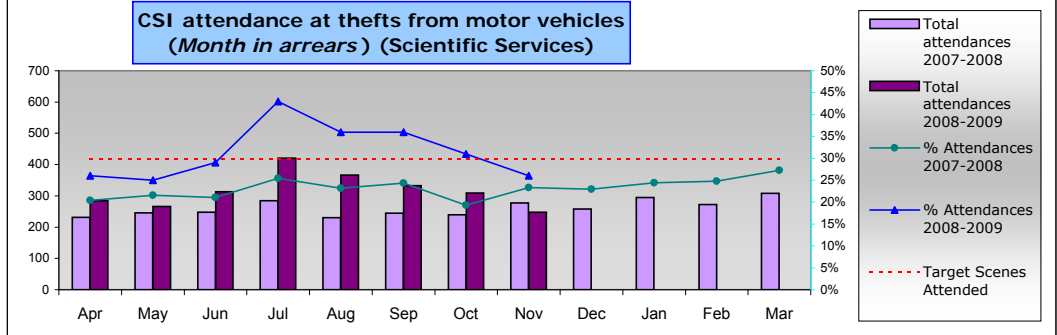
**All murder offences this year compared to last year and detection rates**  
 The target is no more than 16 offences for the current year  
 Detection target for murder is 100%

**Domestic murder offences this year compared to last year and detection rates**  
 Detection target for murder is 100%

**CSI attendance at dwelling burglaries (Month in arrears) (Scientific Services)**



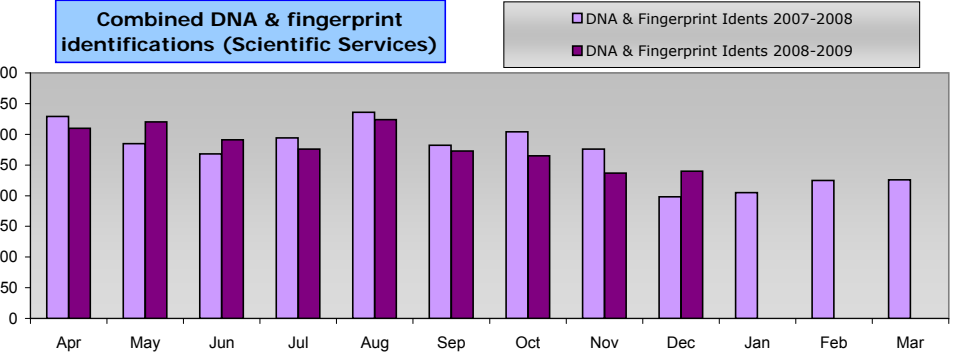
**CSI attendance at thefts from motor vehicles (Month in arrears) (Scientific Services)**



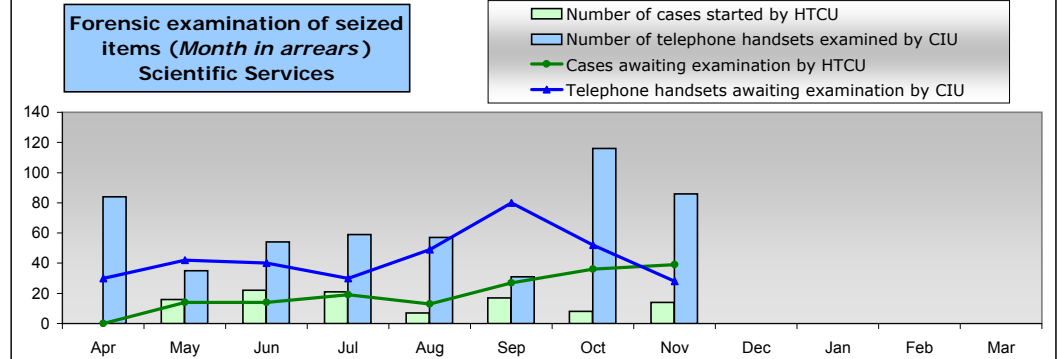
**Burglary dwelling scene attendance rates. Target is no less than 85%**

**Theft from motor vehicle scene attendance rates. Target is no less than 30%**

**Combined DNA & fingerprint identifications (Scientific Services)**



**Forensic examination of seized items (Month in arrears) Scientific Services**



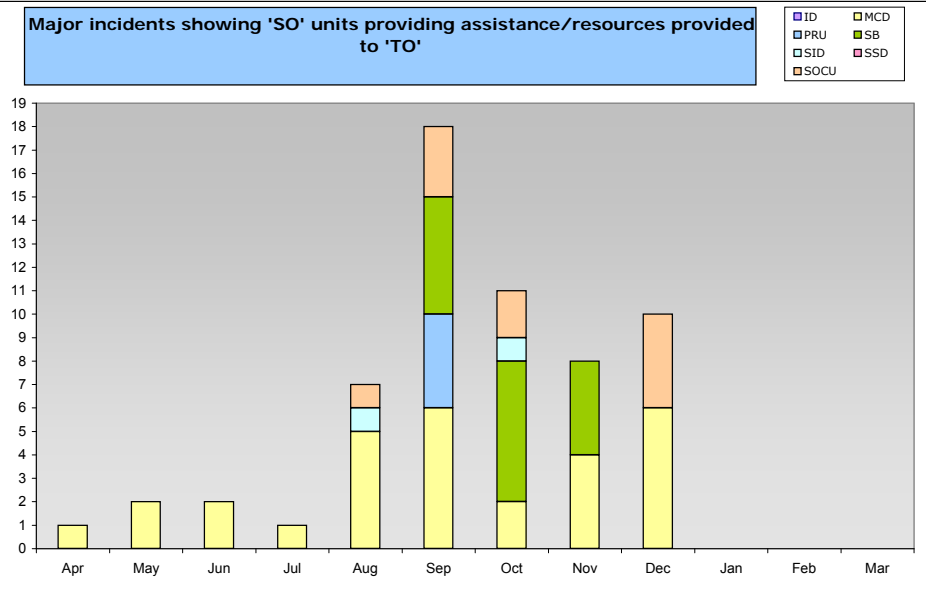
**Combined DNA & fingerprint identifications this year compared to last year**

**Number of cases started & cases awaiting examination by HTCUI**

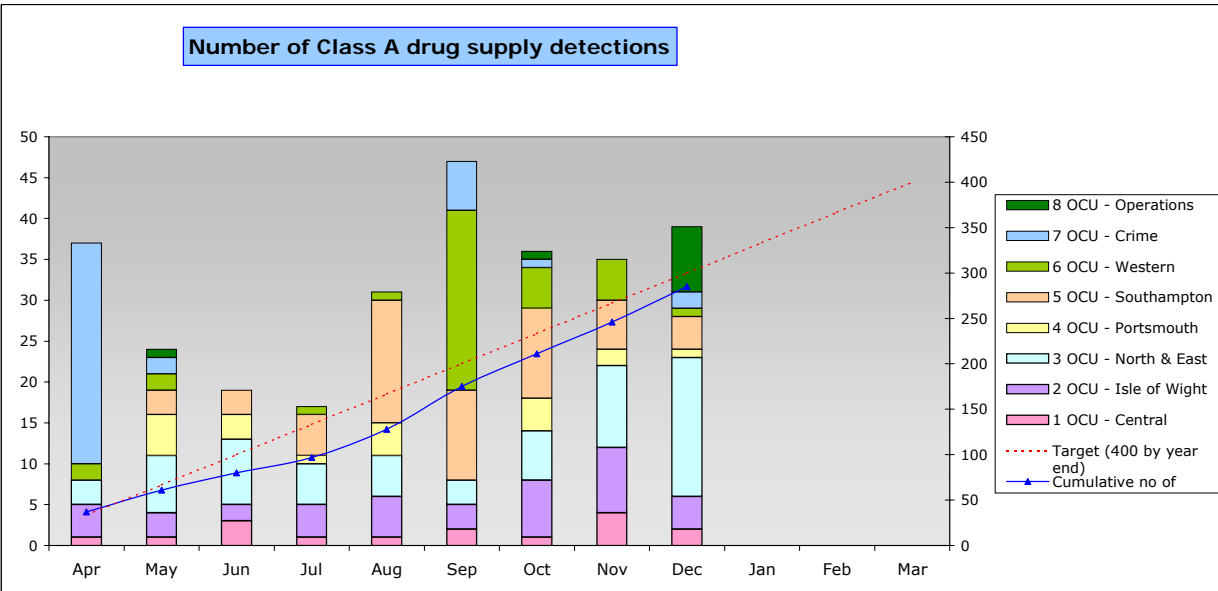
NB: Cases include all computing equipment not just computers (eg monitors, drives, etc...)

**Number of telephone handsets examined & telephone handsets awaiting examination by CIU**

Major incidents showing 'SO' units providing assistance/resources provided to 'TO'



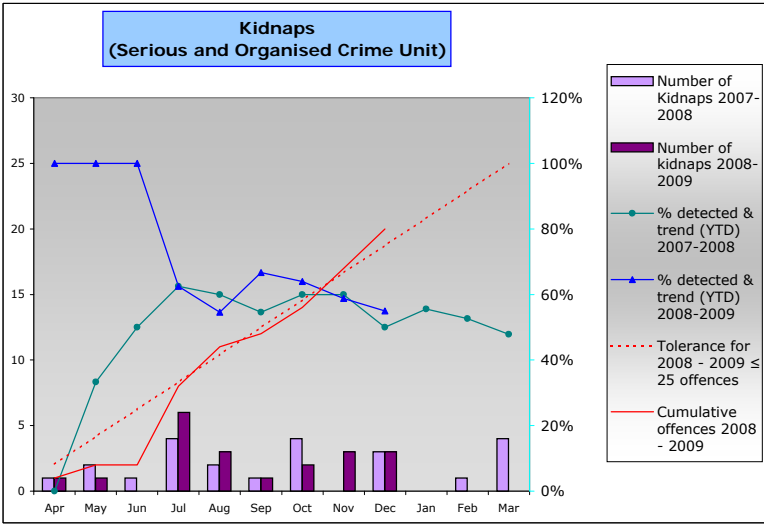
Number of Class A drug supply detections



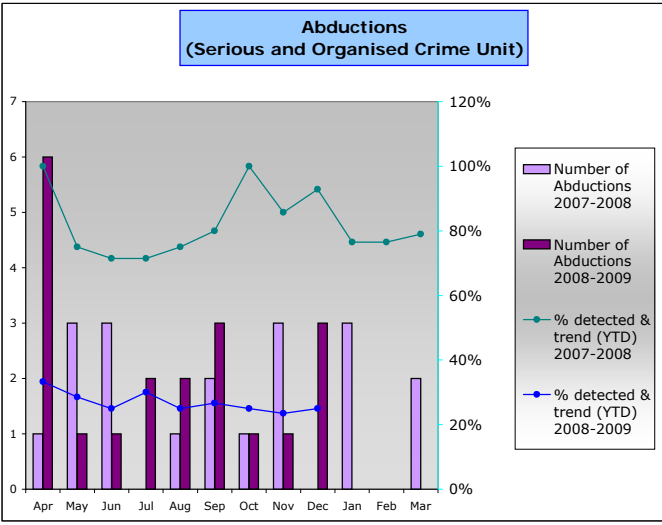
Serious/major incidents where 'SO' expertise or resources were utilised to assist or manage the investigation

Number of detections for offences of Class A drug supply by month by OCU and total detections to date compared with Force target of 400 for year.

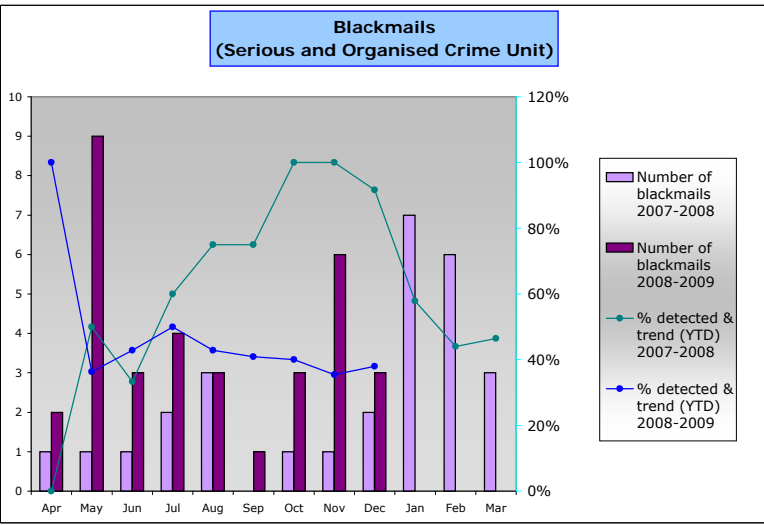
Kidnaps (Serious and Organised Crime Unit)



Abductions (Serious and Organised Crime Unit)



Blackmails (Serious and Organised Crime Unit)



All kidnaps within force this year compared to last year and detection rates. Target for 2008/09 is no more than 25 offences (10% reduction on 2007/08)

All abductions within force this year compared to last year and detection rates

All blackmails within force this year compared to last year and detection rates.

## Specialist Operations - 8 OCU

### 8 OCU Commitment to Pre-Planned Operations - December 08

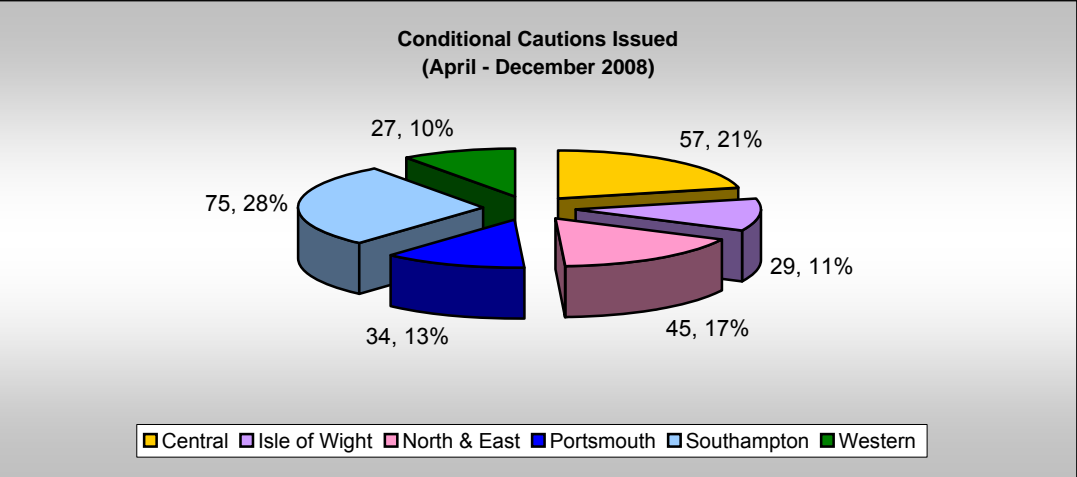
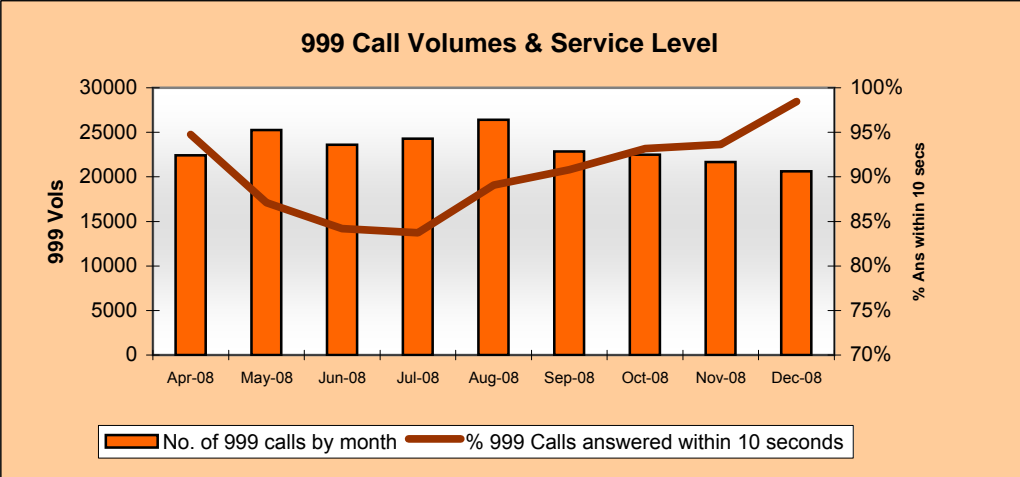
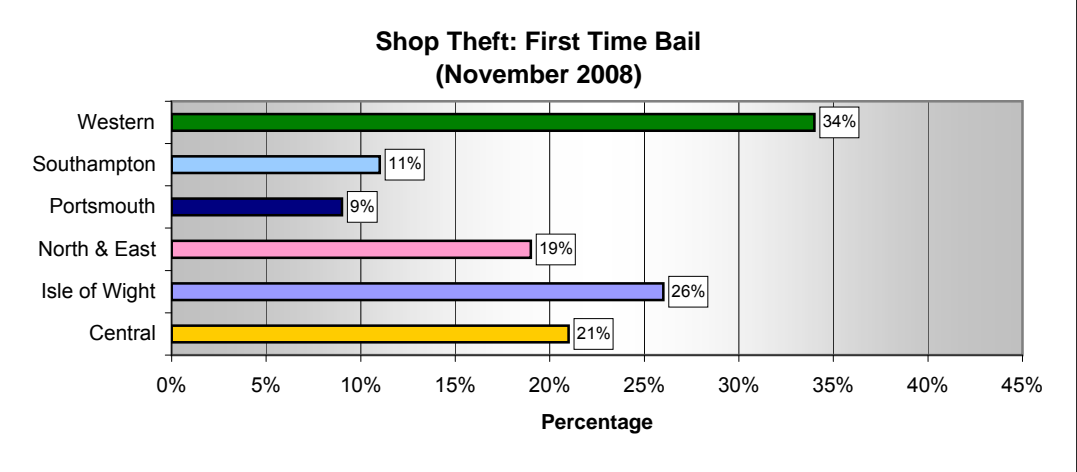
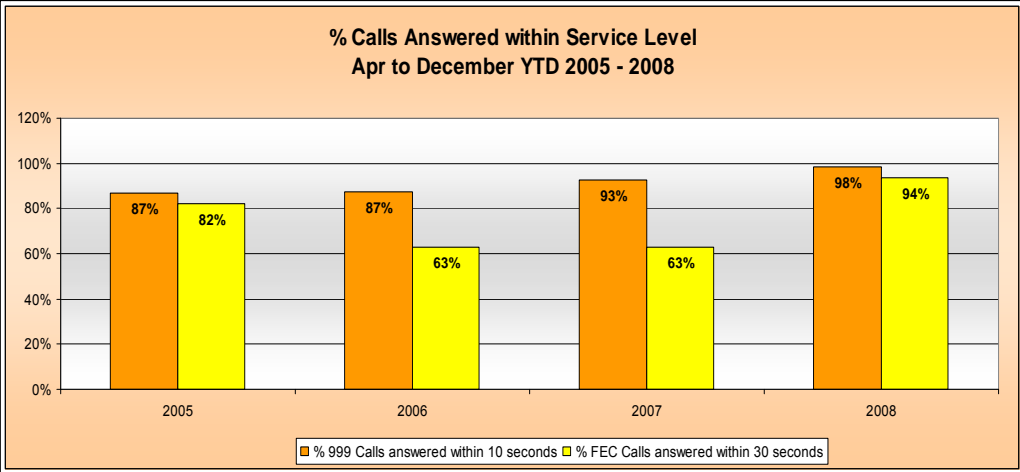
Op. Name	OCU Supported							Total
	1	2	3	4	5	6	Other	
Radon	0	0	0	0	0	0	4	4
Advasar	0	0	0	0	0	0	0	0
Cabot	0	0	0	0	0	0	0	0
Op Viper	0	10	0	0	0	0	0	10
VCS other OCUs	0	0	1	3	5	0	0	9
Op Sandbed	1	0	0	0	1	1	0	3
Op Custodian	0	0	0	0	1	0	0	1
Op Kettering	0	0	4	0	0	0	0	4
Op Columbian	0	0	0	0	0	2	0	2
Op Rainbow	1	0	0	2	1	2	0	6
Busy	0	0	0	0	0	0	1	1
Flinders	0	0	0	0	0	0	1	1
Leisure	0	0	0	1	0	0	0	1
Drink Drive	1	1	6	0	1	0	0	9
Drugs Warrants	10	4	1	4	11	2	0	32
Other	2	7	10	3	7	17	14	60
<b>Total Ops.</b>	<b>15</b>	<b>22</b>	<b>22</b>	<b>13</b>	<b>27</b>	<b>24</b>	<b>20</b>	<b>143</b>
Arrests	2	6	6	13	13	18	1	59
FPNs	0	55	24	0	17	133	0	229
Seizures	0	4	2	0	1	9	0	16
Other	15	169	19	15	108	213	0	539
<b>Total Results</b>	<b>17</b>	<b>234</b>	<b>51</b>	<b>28</b>	<b>139</b>	<b>373</b>	<b>1</b>	<b>843</b>

### 8 OCU Commitment to ANPR Operations - December 08

	OCU Supported							Total
	1	2	3	4	5	6	Other	
No. of Ops	2	2	1	0	0	7	8	20
Arrests	0	1	3	0	0	1	8	13
FPNs	10	0	0	0	0	0	0	10
Seizures	2	0	5	0	0	4	0	11
Other	14	0	1	0	0	11	31	57
<b>Total Results</b>	<b>26</b>	<b>1</b>	<b>9</b>	<b>0</b>	<b>0</b>	<b>16</b>	<b>39</b>	<b>91</b>

# Operational Services

Issues of the month: Measuring **conditional cautions** since April 2008, we can see variation across the OCU's in the use of this disposal. **Bail rates** are shown for Shop Theft: Demonstrating a large variance across force. Bail rates are reducing over time. This has no correlation to the OCU's ability to secure a conviction.



## Victim focus

Hampshire Constabulary has always valued victim care. With the introduction of the Policing Pledge, this section will be used not only to inform how we manage our victims of crime, but our progress and actions that relate to the Pledge.

Particular emphasis surrounds compliance with the Victims' Code - keeping people updated - and it is this area that is currently reported on. Other commitments from the Pledge will be periodically reported on.

### APACS indicators for user satisfaction

iQuanta data for MSG for the 12 months up to September 2008

<b>Crime type</b>	<b>MSG position</b>	<b>1<sup>st</sup> in MSG</b>
<u>Vehicle crime</u>		
Ease of contact	<b>3/8</b>	Hertfordshire
Actions taken	<b>4/8</b>	Essex
Follow up	<b>4/8</b>	Hertfordshire
Treatment	<b>4/8</b>	Hertfordshire
<b>OVERALL</b>	<b>5/8</b>	Hertfordshire
<u>Burglary</u>		
Ease of contact	<b>2/8</b>	Hertfordshire
Actions taken	<b>1/8</b>	Hampshire
Follow up	<b>1/8</b>	Hampshire
Treatment	<b>2/8</b>	Hertfordshire
<b>OVERALL</b>	<b>3/8</b>	Hertfordshire
<u>Violent crime</u>		
Ease of contact	<b>4/8</b>	Essex
Actions taken	<b>4/8</b>	Essex
Follow up	<b>6/8</b>	Avon and Somerset
Treatment	<b>3/8</b>	Hertfordshire
<b>OVERALL</b>	<b>2/8</b>	Sussex
<u>RTC</u>		
Ease of contact	<b>1/8</b>	Hampshire
Actions taken	<b>2/8</b>	Hertfordshire
Follow up	<b>3/8</b>	Hertfordshire
Treatment	<b>2/8</b>	Hertfordshire
<b>OVERALL</b>	<b>2/8</b>	Hertfordshire
<u>All users (excluding racist incidents)</u>		
Ease of contact	<b>2/8</b>	Hertfordshire
Actions taken	<b>3/8</b>	Hertfordshire
Follow up	<b>3/8</b>	Hertfordshire
Treatment	<b>2/8</b>	Hertfordshire
<b>OVERALL</b>	<b>2/8</b>	Hertfordshire

## Victim Focus

### Summary results of Dip-sample Victim Code Compliance checks (latest month for available data followed by YTD)

% where victim was informed within 5 days of an investigation being closed

	Central	Isle of Wight	North & East	Portsmouth	Southampton	Western	Force
November 2008	100%	95%	85%	90%	55%	100%	94%
YTD	100%	97%	96%	96%	60%	97%	91%

% where the victim has been updated on a monthly basis (if applicable)

	Central	Isle of Wight	North & East	Portsmouth	Southampton	Western	Force
November 2008	100%	50%	50%	100%	100%	93%	79%
YTD	97%	75%	81%	92%	95%	94%	89%

% where the victim was notified upon filing (if applicable)

	Central	Isle of Wight	North & East	Portsmouth	Southampton	Western	Force
November 2008	100%	80%	85%	100%	100%	100%	93%
YTD	100%	93%	86%	97%	100%	92%	95%

### Victim support status for crimes

Month of Dec 2008	Central	Isle of Wight	North & East	Portsmouth	Southampton	Western	Force	Force %
Victim informed of VSS accepted	224	51	187	129	319	246	1156	9.06%
Victim informed of VSS declined	1598	550	1464	1158	1612	1334	7716	60.45%
VSS aware	132	11	63	10	51	59	326	2.55%
Victimless crime	590	205	608	586	593	571	3153	24.70%
Not stated		10	153	134	112	4	413	3.24%
Total crimes	2544	827	2475	2017	2687	2214	12764	N/A
% referred	13.99%	7.50%	10.10%	6.89%	13.77%	13.78%	11.61%	N/A

YTD to Dec 2008	Central	Isle of Wight	North & East	Portsmouth	Southampton	Western	Force	Force %
Victim informed of VSS accepted	2333	543	1817	1273	2969	2262	11197	9.19%
Victim informed of VSS declined	15896	5370	14780	11148	16241	14061	77496	63.63%
VSS aware	727	84	457	211	284	378	2141	1.76%
Victimless crime	5693	2143	5617	5517	5493	5032	29495	24.22%
Not stated	12	74	363	709	290	9	1457	1.20%
Total crimes	24661	8214	23034	18858	25277	21742	121786	N/A
% referred	12.41%	7.63%	9.87%	7.87%	12.87%	12.14%	10.95%	N/A