



Force Performance Summary

September 2008

Summary

This document contains a strategic overview of the Constabulary's performance. It has a variety of performance measures within it, but for the first time our performance is aligned to the Force Control Strategy.

It is a headline document that will enable our customers, both internally and externally, to easily assess performance in key domains. Additionally with the introduction of the national performance framework called the Assessment of Police and Community Safety (APACS), it is crucial that we become focused and more accountable.

At the front of the document there are several matrices that reflect our performance against our targets, firstly year to date and secondly relevant for that particular month.

Performance in key areas is then explored in more depth with an indication of where each measure has originated - for example, APACS Statutory Performance Indicator (SPI) or a Force Control Strategy (FCS) measure.

This document is then taken forward by key stakeholders within the organisation to the Force Performance Review Group, where it is used to highlight areas of both best practice and those for development.

This is an evolving document and as such, the content may alter over time and any feedback would be welcomed by the Performance Review Team.

Index

Page

Year to date performance matrix

4-5

Monthly performance matrix

6-7

including notes on matrices terminology

Safer Neighbourhoods

8	Overall satisfaction	SPI 1.1	FCS	Consultation & Research Team
8	Being kept informed		FCS	Consultation & Research Team
8	Comparative satisfaction of minority ethnic groups	SPI 1.2		Consultation & Research Team
8	Satisfaction of victims of racist incidents	SPI 1.3		Consultation & Research Team
8	Confidence in local police	SPI 2.3	FCS	iQuanta - Quarterly
8	Understanding community issues		FCS	iQuanta - Quarterly
8	Perception of anti-social behaviour	SPI 4.1		iQuanta - Quarterly
8	Perception of drug use in local area	SPI 4.3	FCS	iQuanta - Quarterly
8	Perception of drunk or rowdy behaviour	SPI 4.2		iQuanta - Quarterly
9	Assault with less serious injury	SPI 5.3	FCS	Business Objects
10	Successful neighbourhood priorities		FCS	Neighbourhood Policing Lead - ACC 'TO' Dept
10	Anti-social use of motor vehicle (NSIR)		FCS	PRT - NSIR Return
10	Anti-social behaviour (NSIR)		FCS	PRT - NSIR Return
11	Criminal damage		FCS	Business Objects

Safeguard people

12	DV Incident arrest rate		FCS	Business Objects
12	DV victimisation		FCS	N/A
12	Repeat victims of domestic violence		FCS	Business Objects
12	Domestic violence OBTJ rate		FCS	Criminal Justice Department
13	Hate crime detection rate		FCS	Business Objects
13	Sexual offender reoffending rate		FCS	N/A

Protect our communities

14	Road traffic casualties	SPI 9.1	FCS	8 OCU Performance Team
----	-------------------------	---------	-----	------------------------

Prevent, reduce and detect crime

15	Serious violent crime and sanction detections	SPI 5.1	FCS	Business Objects
16	All crime		FCS	Business Objects
17	Serious acquisitive crime and sanction detections	SPI 5.2	FCS	Business Objects
18	Gun crime rate	SPI 5.5		Business Objects and Manual Checking
18	Knife crime rate	SPI 5.6		Business Objects and Manual Checking
18	Serious sexual crime OBTJ rate	SPI 6.4	FCS	Criminal Justice Department
18	Murder offences		FCS	Business Objects
18	Asset recovery	SPI 8.1	FCS	Specialist Investigation Department
18	PPO convictions	SPI 10.1	FCS	Criminal Justice Department
18	Class A drugs sanction detections		FCS	Business Objects
18	Drug Intervention Measures (DIMs)			Force Intelligence

Organisational management

19	Police officer sickness	SPI 13.1	FCS	PRT - Delphi + Personnel - Staffing Figures
20	Police staff sickness	SPI 13.2	FCS	PRT - Delphi + Personnel - Staffing Figures
21	Overdue PDRs			Personnel
22	Minority Ethnic Officer Recruitment	SPI 3.1		Personnel
22	Female Officer Representation	SPI 3.2		Personnel
22	NCRS compliance		FCS	Force Incident & Crime Registrar
22	Budget Spend		FCS	Finance
22	Efficiency Savings		FCS	Finance

Specialist Operations - 7 OCU

23 - 24	Murder & domestic murder offences (SPI 5.4), CSI attendance, DNA & fingerprint identifications, forensic examinations Major Incidents, class A drug detections, kidnaps, abductions, blackmails			
---------	--	--	--	--

Specialist Operations - 8 OCU

25	Patrol availability, pre-planned operations, ANPR operations, Interventions in support of OCUs & Force Strategy			
----	---	--	--	--

Operational Services

26	Performance highlights relating to Operation Services Departments which include Call Management, Criminal Justice Department and Personnel and Training			
----	---	--	--	--

Victim Focus

27-28	APACs indicators for user satisfaction, Victim Code compliance, Victim Support status			
-------	---	--	--	--

Restricted data

29

Year to date performance matrix

This matrix is based on year to date comparison with 2007/2008 performance

		Target	Actual	Central	Isle of Wight	North & East	Portsmouth	Southampton	Western	Crime	Operations		
Safer Neighbourhoods	Overall satisfaction (data for rolling 12 months)	>62.0%	62.0%	63.0%	68.0%	59.0%	61.0%	59.0%	62.0%	N/A			
	Being kept informed (data for rolling 12 months)	>60.0%	47.0%	46.0%	54.0%	44.0%	46.0%	47.0%	48.0%	N/A			
	Confidence in local police	>58.5%	57.4%	Force level target - to exceed MSG average by 5% whilst not declining on current performance									
	Understanding community issues	>65.7%	65.5%	Force level target - to exceed MSG average by 3.5% whilst not declining on current performance									
	Perception of drug use in local area	<22.6%	23.0%	Force level target - be under MSG average whilst not declining on current performance									
	Assault with less serious injury*	-5.0%	3.4%	-4.5%	-4.5%	3.7%	-3.6%	20.3%	-1.8%	N/A			
	OCU specific targets												
	Successful neighbourhood priorities	>33.0%	Pg 10	Quarterly Data - See Page 10								N/A	
	Anti-social use of motor vehicle	-5.0%	-16.5%	-17.9%	-22.2%	-12.9%	-31.6%	-18.5%	0.8%	N/A			
	Anti-social behaviour	-5.0%	-5.4%	-7.6%	-3.1%	0.6%	-8.5%	-5.2%	-7.0%	N/A			
	Reduce criminal damage	-12.0%	-9.4%	-13.3%	-9.0%	-5.2%	-9.2%	-13.6%	-4.5%	N/A			
Safer Neighbourhoods - targets achieved		3		4	2	1	2	3	2				
Safeguard people	Domestic violence incident arrest rate	>35.0%	33.8%	35.0%	36.2%	36.4%	26.2%	29.1%	49.4%	N/A			
	Repeat victims of domestic violence	-5.0%	1.3%	-1.0%	-1.2%	3.0%	-7.8%	8.7%	3.8%	N/A			
	Hate crime detection rate	>45.0%	33.9%	32.2%	41.9%	29.0%	27.9%	37.4%	38.4%	N/A			
Safeguard people - targets achieved		0		1	1	1	1	0	1				
Protect our communities	Road traffic casualties	<393	346	Owned by Operations OCU							346		
	Protect our communities - targets achieved		1									1	

Year to date performance matrix cont'd

This matrix is based on year to date comparison with 2007/2008 performance

		Target	Actual	Central	Isle of Wight	North & East	Portsmouth	Southampton	Western	Crime	Operations	
Prevent, reduce and detect crime	Serious violent crime	-6.0%	-15.6%	11.0%	-15.4%	-31.0%	-31.7%	-11.0%	-18.5%	N/A		
	Serious violent crime SD	>50.0%	49.8%	47.5%	69.7%	65.5%	44.9%	41.3%	50.0%	N/A		
	All crime*		-3.0%	-3.0%	-2.9%	-5.5%	-0.7%	-5.8%	-4.5%	0.0%	N/A	
		OCU specific targets			-2.34%	-2.35%	-1.50%	-1.50%	-4.35%	-5.25%	N/A	
	Serious acquisitive crime*		-2.0%	-5.3%	-8.9%	-9.4%	-0.6%	-9.0%	-0.4%	-7.2%	N/A	
		OCU specific targets			-1.39%	-2.11%	-2.38%	-1.36%	-2.27%	-2.48%	N/A	
	Serious acquisitive crime SD	>15.0%	10.1%	10.5%	14.5%	9.6%	10.2%	9.4%	9.9%	N/A		
	Murder offences	<8	4	Owned by Crime OCU							4	Owned by Crime OCU
	Asset recovery (shown in £1000s)	£2,072.6	£6,289.9	This is a Force measure								
Class A drugs SD	>201	182	Owned by Crime OCU							182	Owned by Crime OCU	
Prevent, reduce and detect crime - targets achieved		5		2	4	2	3	2	3	1		
Organisational management	Police officer sickness	<3.75	3.92	3.85	4.37	2.85	5.10	4.02	4.70	3.24	3.71	
	Police staff sickness	<3.75	4.00	4.67	5.24	3.50	5.08	3.74	3.98	3.65	2.25	
	NCRS compliance	Good	N/A		Fair	Fair	Fair	Poor	Poor	Fair	No data	N/A
		90.0%			82%	82%	84%	72%	64%	85%	No data	
	Budget spend	<41.9%	42%	42%	39%	44%	43%	40%	40%	39%	43%	
Efficiency savings	>£10m	£2.44m	This is a Force measure									
Organisational management - targets achieved		0		0	1	2	0	2	1	3	2	
Force Total - targets achieved		9		7	8	6	6	7	7	4	3	

Note: Some areas contained within the Force Control Strategy and Force Target documents do not yet appear in the above matrix. This is because, to date, it has not been possible to establish sufficient baseline data to set a target. Work is ongoing in these areas to establish a baseline. Information in relation to our progress within these areas is contained within the detailed sections of the profile.

Monthly performance matrix

This matrix is based on monthly data compared to force target

		Target	Actual
Safer Neighbourhoods	Assault with less serious injury*	<1126	1259
	OCU specific targets		
	Anti-social use of motor vehicle	<1457	1268
	OCU specific targets		
	Anti-social behaviour	<8105	9314
	OCU specific targets		
Reduce criminal damage	<2814	2841	
OCU specific targets			
Safer Neighbourhoods - targets achieved			1
Safeguard people	Domestic violent incident arrest rate	> 35.0%	31.7%
	Hate crime detection rate	>45.0%	27.8%
	Safeguard people - targets achieved		
Protect our communities - targets achieved			
Prevent, reduce and detect crime	Serious violent crime	<72	86
	OCU specific targets		
	Serious violent crime SD	>50.0%	38.4%
	All crime*	<13150	13472
	OCU specific targets		
	Serious acquisitive crime*	<1839	1796
	OCU specific targets		
	Serious acquisitive crime SD	>15.0%	12.8%
	Asset recovery	£344,483	£2,486
Class A drugs SD	>33	36	
Prevent, reduce and detect crime - targets achieved			2
Organisational management	Police officer sickness	<0.63	0.60
	Police staff sickness	<0.63	0.60
	Organisational management - targets achieved		
Force Total - targets achieved			5

Central	Isle of Wight	North & East	Portsmouth	Southampton	Western	Crime	Operations
236	85	194	178	381	185		N/A
238.0	76.4	198.3	157.8	275.3	179.6		N/A
235	74	234	102	290	290		N/A
312.5	97.7	278.4	143.6	260.7	288.9		N/A
1842	734	1636	1465	2104	1370		N/A
1702.0	594.2	1391.2	1268.4	1730.4	1288.1		N/A
555	218	547	387	619	515		N/A
615.0	220.8	507.0	350.4	600.4	520.5		N/A
3	2	2	1	0	1		
33.5%	41.6%	31.5%	24.7%	24.6%	49.2%		N/A
24.1%	50.0%	26.1%	29.4%	18.2%	61.5%		N/A
0	2	0	0	0	2		
12	5	10	19	30	10		N/A
12.6	6.7	12.2	13.9	20.4	6.4		N/A
25.0%	40.0%	70.0%	21.1%	33.3%	70.0%		N/A
2662	1041	2497	2048	2837	2387		N/A
2689.6	909.1	2469.5	2037.0	2779.2	2265.6		N/A
315	64	346	322	401	348		N/A
325.5	78.1	359.6	301.6	409.1	365.3		N/A
14.6%	6.3%	11.0%	14.0%	11.7%	14.1%		N/A
This is Force measure							
Owned by Crime OCU						36	Owned by Crime OCU
3	2	3	0	1	2	1	
0.41	0.51	0.54	0.77	0.82	0.76	0.55	0.55
0.59	0.51	0.41	0.67	0.71	0.33	0.57	0.37
2	2	2	0	0	1	2	2
8	8	7	1	1	6	3	2

Note: Some areas contained within the Force Control Strategy and Force Target documents do not yet appear in the above matrix. This is because, to date, it has not been possible to establish sufficient baseline data to set a target. Work is on going in these areas to establish a baseline. Information in relation to our progress within these areas is contained within the detailed sections of this document.

Notes to be read in conjunction with matrices

All citizen focus data	Based on "completely or very satisfied"
OBTJ	Offenders Brought To Justice
Road traffic casualties	All data until 31 August 2008
Budget spend	Data is always one month in arrears
Efficiency savings	3 year target of £30m, notionally £10m per year
SD	Sanction detections
Anti-social use of motor vehicle & behaviour	Data is obtained from NSIR and always 1 month in arrears
Sickness data	Force Actual = total for ALL officers/police staff - including those not in OCU
OCU specific targets	OCU specific targets are rounded to 1 decimal place, the actual figure may therefore seem the same but appear red due to this rounding
Asset recovery	Asset recovery is the sum total of the values of cash forfeitures and confiscation orders
* = variable targets across OCUs for these target areas based on previous performance and MSG position	

Safer Neighbourhoods

Overall satisfaction

Rolling 12 months data relates to: Oct 07 - Sept 08; rolling 3 months data relates to July 08 - Sept 08
Overall satisfaction includes burglary, vehicle crime, violent crime and RTCs

Target 62%	Central	Isle of Wight	North & East	Portsmouth	Southampton	Western	Force	No. Surveys
Rolling 12 months	63%	68%	59%	61%	59%	62%	62%	9109
Rolling 3 months	65%	77%	69%	66%	61%	66%	66%	2476

Being kept informed

Rolling 12 months data relates to: Oct 07 - Sept 08; rolling 3 months data relates to July 08 - Sept 08
Being kept informed includes burglary, vehicle crime, violent crime and RTCs

Target 60%	Central	Isle of Wight	North & East	Portsmouth	Southampton	Western	Force	No. Surveys
Rolling 12 months	46%	54%	44%	46%	47%	48%	47%	8870
Rolling 3 months	48%	64%	52%	53%	50%	51%	52%	2363

Comparative satisfaction of minority ethnic groups

Data relates to interviews which took place Oct 07 - Sept 08
These figures are for overall satisfaction for burglary, vehicle crime, violent crime & RTCs; it excludes racist incidents

	Completely and very satisfied	Completely, very and fairly satisfied
White	61.9%	81.2%
Minority Ethnic	52.4%	74.2%

Satisfaction of victims of racist incidents

These figures relate to interviews which took place Oct 07 - Sept 08; these will be updated quarterly
Racist incident overall satisfaction = % completely or very satisfied

	Central	Isle of Wight	North & East	Portsmouth	Southampton	Western	Force
%	50%	60%	67%	58%	52%	65%	58%
Number of surveys	28	10	30	38	50	31	187

British Crime Survey data

This data is updated by iQuanta approximately every quarter.

Data 12 mths to March	Confidence in local police		Understanding community issues		Targets MSG = Most Similar Group	
Avon & Somerset	48.3%		59.4%		Confidence in local police To exceed MSG by 5% whilst maintaining performance	
Bedfordshire	52.2%		63.1%		Understanding community issues To exceed MSG by 3.5% whilst maintaining performance	
Essex	53.5%		59.5%			
Hampshire	57.4%	2nd in MSG	65.5%	2nd in MSG	Perception of drug use To be under MSG whilst maintaining performance	
Hertfordshire	58.2%		67.1%			
Kent	49.8%		59.2%			
Sussex	52.0%		60.6%			
Thames Valley	56.7%		63.0%			
MSG	53.5%		62.2%			

Data 12 mths to March	Perception of anti-social behaviour		Perception of drug use		Perception of drunk or rowdy behaviour	
Avon & Somerset	14.0%		24.0%		26.1%	
Bedfordshire	17.2%		25.1%		21.6%	
Essex	10.3%		17.1%		21.0%	
Hampshire	14.9%	5th in MSG	23.0%	5th in MSG	28.8%	8th in MSG
Hertfordshire	14.5%		22.9%		23.5%	
Kent	15.4%		21.5%		20.7%	
Sussex	13.4%		21.0%		22.2%	
Thames Valley	17.0%		26.0%		26.2%	
MSG	14.6%		22.6%		23.8%	

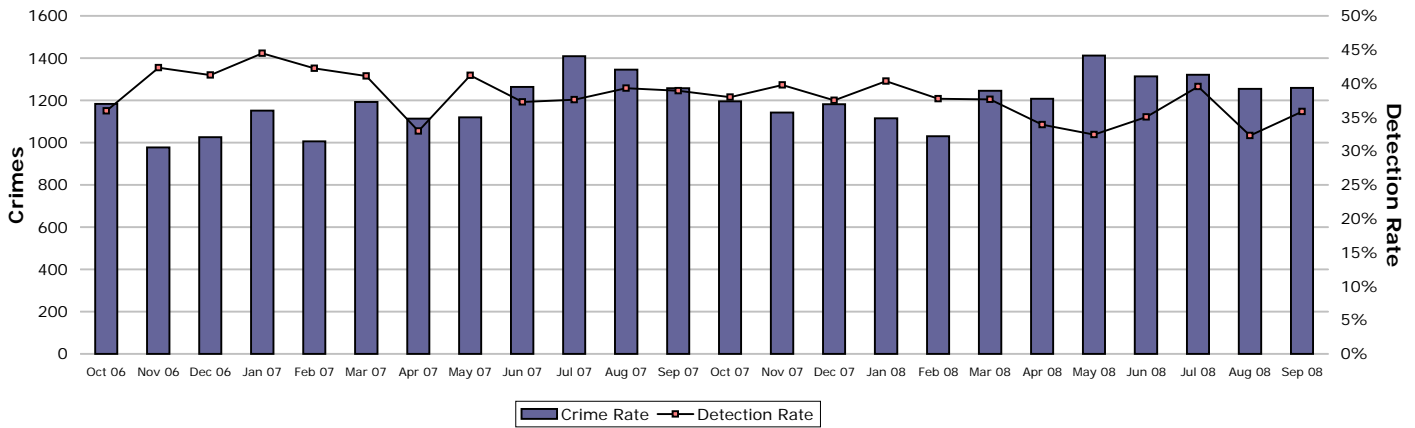
The target for the three areas below is not to decline against previous performance

	Dec 2007	Mar 2008	Jun 2008	Sep 2008	Dec 2008
Confidence in local police	57.4%	57.4%			
Understanding community issues	64.2%	65.5%			
Perception of drug use	23.0%	23.0%			

Safer Neighbourhoods

Assault with less serious injury

Assault with less serious injury consists of crimsec codes 8G and 8J

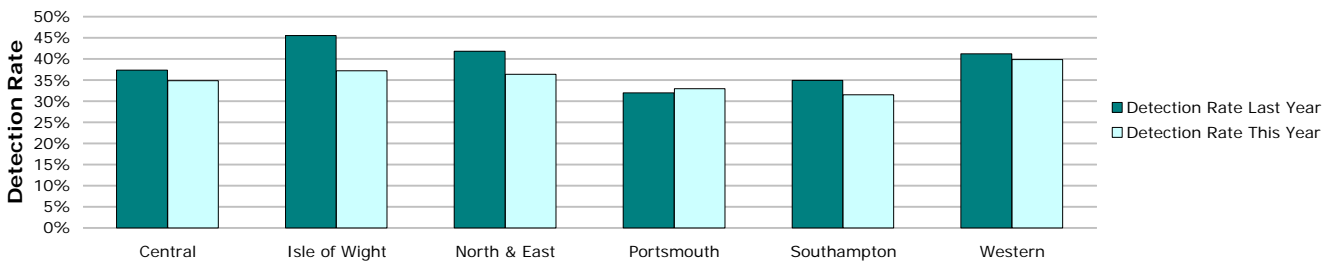


Crimes	Central	Isle of Wight	North & East	Portsmouth	Southampton	Western	Force
YTD Crimes	1514	514	1291	1070	2192	1186	7767
YTD Target	1452	466	1209	962	1455	1095	6640
YTD 07/08 Crimes	1586	538	1245	1110	1822	1208	7509
This month	236	85	194	178	381	185	1259
% change from 07/08	-4.54%	-4.46%	3.69%	-3.60%	20.31%	-1.82%	3.44%
MSG position	13 of 15	7 of 15	14 of 15	7 of 9	15 of 15	9 of 15	8 of 8



Detections	Central	Isle of Wight	North & East	Portsmouth	Southampton	Western	Force
YTD Detection Rate	34.87%	37.16%	36.33%	32.99%	31.52%	39.88%	34.83%
This month	36.86%	36.47%	32.47%	33.71%	32.81%	45.95%	35.82%
YTD 07/08 Detections	37.33%	45.54%	41.85%	31.98%	34.91%	41.23%	37.91%
MSG position	13 of 15	13 of 15	12 of 15	6 of 9	12 of 15	11 of 15	7 of 8

Note: Detections refer to Sanction Detections ONLY



Safer Neighbourhoods

Successful neighbourhood priorities

Target = 33%	Central	Isle of Wight	North & East	Portsmouth	Southampton	Western	Force
Number of neighbourhoods	59	20	64	16	22	63	244
Number of priorities achieved	13	1	21	2	3	21	61
% of priorities achieved	22.0%	5.0%	32.8%	12.5%	13.6%	33.3%	25.0%

This data shows the number of neighbourhood priorities that have, over the last quarter, been successfully achieved. It should be remembered that limited value should be placed on this measure as it does not necessarily reflect community satisfaction with the police activity in support of the priorities. Work is still ongoing to capture this satisfaction level.

Anti-social use of motor vehicle

Data to be provided a month in arrears. It is gathered using Altaris closing codes as the primary data source, then RMS as the secondary data source to gather incidents not recorded within Altaris.

The Force total does not add up to the sum of OCUs, this is due to Altaris incident logs which do not contain a geographic location.

	Central	Isle of Wight	North & East	Portsmouth	Southampton	Western	Force
YTD Apr 08 to Aug 08	1591	439	1353	628	1325	1730	7328
YTD Apr 07 to Aug 07	1938	564	1553	918	1626	1717	8778
August	235	74	234	102	290	290	1268
YTD Target	1542.6	482.1	1374.1	708.8	1286.5	1426.0	7190.6
% v target	3.1%	-8.9%	-1.5%	-11.4%	3.0%	21.3%	1.9%
% change from 07/08	-17.9%	-22.2%	-12.9%	-31.6%	-18.5%	0.8%	-16.5%

Anti-social use of motor vehicle - relates to NSIR category Vehicle Nuisance/Inappropriate Use within the Anti-Social Behaviour Grouping

Anti-social behaviour

Data to be provided a month in arrears. It is gathered using Altaris closing codes as the primary data source, then RMS as the secondary data source to gather incidents not recorded within Altaris.

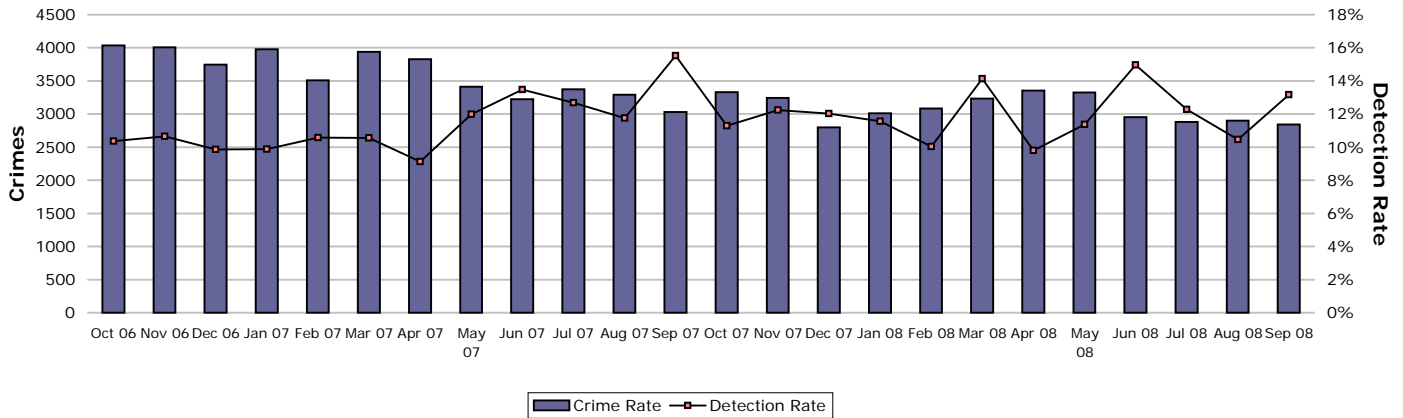
The Force total does not add up to the sum of OCUs, this is due to Altaris incident logs which do not contain a geographic location.

	Central	Isle of Wight	North & East	Portsmouth	Southampton	Western	Force
YTD Apr 08 to Aug 08	9457	3415	8243	6727	9965	7093	45562
YTD Apr 07 to Aug 07	10231	3525	8191	7354	10508	7628	48169
August	1842	734	1636	1465	2104	1370	9314
YTD Target	8400.3	2932.6	6866.1	6260.0	8540.3	6357.3	40000.5
% v target	12.6%	16.5%	20.1%	7.5%	16.7%	11.6%	13.9%
% change from 07/08	-7.6%	-3.1%	0.6%	-8.5%	-5.2%	-7.0%	-5.4%

Anti-social behaviour - relates to NSIR categories Environmental Damage/Littering, Rowdy & Inconsiderate and Neighbours within the Anti-Social Behaviour Grouping

Safer Neighbourhoods

Criminal damage

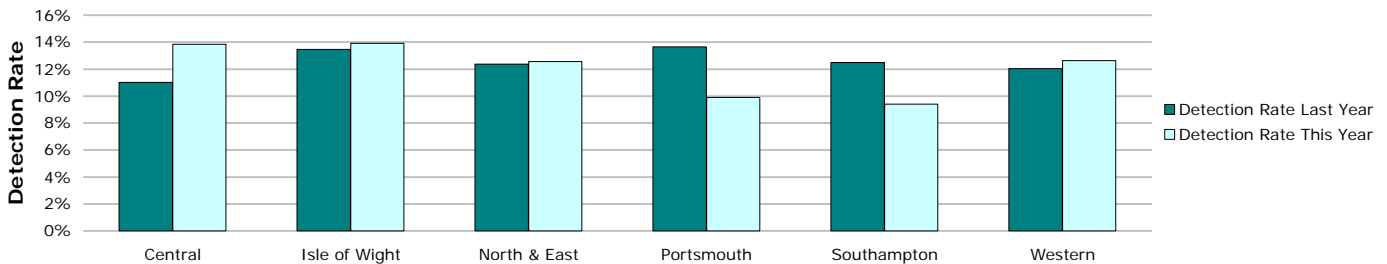


Crimes	Central	Isle of Wight	North & East	Portsmouth	Southampton	Western	Force
YTD Crimes	3784	1401	3449	2375	3765	3478	18252
YTD Target	3751	1347	3092	2137	3086	3175	16588
YTD 07/08 Crimes	4365	1539	3637	2616	4358	3640	20155
This month	555	218	547	387	619	515	2841
% change from 07/08	-13.31%	-8.97%	-5.17%	-9.21%	-13.61%	-4.45%	-9.44%
MSG position	13 of 15	13 of 15	15 of 15	7 of 9	15 of 15	11 of 15	8 of 8



Detections	Central	Isle of Wight	North & East	Portsmouth	Southampton	Western	Force
YTD Detection Rate	13.85%	13.92%	12.55%	9.89%	9.40%	12.62%	11.94%
This month	15.14%	12.39%	9.87%	13.18%	11.95%	16.31%	13.16%
YTD 07/08 Detections	11.02%	13.45%	12.37%	13.65%	12.48%	12.03%	12.29%
MSG position	9 of 15	11 of 15	12 of 15	8 of 9	15 of 15	14 of 15	7 of 8

Note: Detections refer to Sanction Detections ONLY



Safeguard people

Domestic violence is defined by ACPO as: 'any incidence of threatening behaviour, violence or abuse (psychological, physical, sexual, financial or emotional) between adults, aged 18 and over, who are or have been intimate partners or family members, regardless of gender or sexuality'

Domestic violence incident arrest rate

Domestic violence arrest rate is based on records where the occurrence has been flagged as a domestic, and has an arrest event or a linked person reason of arrested. This measure looks at all domestic incidents (not only crimes).

Target >35%

Year to Date	Central	Isle of Wight	North & East	Portsmouth	Southampton	Western	Force
Domestic Incidents	2433	749	1789	2041	2525	1193	10730
Domestic Incident Arrests	852	271	651	534	735	589	3632
Domestic Incident Arrest Rate	35.02%	36.18%	36.39%	26.16%	29.11%	49.37%	33.85%

Month	Central	Isle of Wight	North & East	Portsmouth	Southampton	Western	Force
Domestic Incidents	367	113	241	300	395	181	1597
Domestic Incident Arrests	123	47	76	74	97	89	506
Domestic Incident Arrest Rate	33.51%	41.59%	31.54%	24.67%	24.56%	49.17%	31.68%

Domestic violence victimisation

Placeholder - This measure was a joint APACS and National Indicator Set measure looking at the work of MARACS. This measure was dropped from the 2008/09 APACS guidance, however is expected to be included in the 2009/10 guidance, at which time technical guidance will be published to enable reporting.

Repeat victims of domestic violence

Incidents	Central	Isle of Wight	North & East	Portsmouth	Southampton	Western	Force
YTD All Domestic Violence	2433	749	1789	2041	2525	1193	10730
YTD 07/08 All Domestic Violence	2299	713	1511	2003	2300	1389	10215
YTD Repeat Victims	1039	313	555	1093	859	483	4342
YTD 07/08 Repeat Victims	989	281	510	1021	689	474	3964
YTD % Repeat Victims	42.7%	41.8%	31.0%	53.6%	34.0%	40.5%	40.5%
YTD 07/08% Repeat Victims	43.0%	39.4%	33.8%	51.0%	30.0%	34.1%	38.8%

Crimes - Target -5% in repeat victims	Central	Isle of Wight	North & East	Portsmouth	Southampton	Western	Force
YTD All Domestic Violence	1051	320	758	653	991	703	4476
YTD 07/08 All Domestic Violence	1062	324	736	708	912	677	4419
YTD Repeat Victims	244	76	185	183	293	156	1137
YTD 07/08 Repeat Victims	290	64	136	214	215	119	1038
YTD % Repeat Victims	23.2%	23.8%	24.4%	28.0%	29.6%	22.2%	25.4%
YTD 07/08% Repeat Victims	27.3%	19.8%	18.5%	30.2%	23.6%	17.6%	23.5%
% change in repeat victims from 07/08	-1.0%	-1.2%	3.0%	-7.8%	8.7%	3.8%	1.3%

Note: Crimes are a subset of the incident data. This data reflects ALL crime types, and is not restricted to 'violent' offences

Crimes - This month	Central	Isle of Wight	North & East	Portsmouth	Southampton	Western	Force
This month All Domestic Violence	186	54	107	118	157	112	734
This month Repeat Victims	39	16	26	29	53	24	187
This month % Repeat Victims	21.0%	29.6%	24.3%	24.6%	33.8%	21.4%	25.5%

Domestic violence OBJT rate

The Office for Criminal Justice Reform is working on the breakdown as required within this Summary which will be available shortly. The Tier 3 "other offences" measure includes the domestic violence OBJT rate which currently cannot be individually extracted. The table below shows the percentage of persons brought to justice for "other offences" which includes domestic violence (DV) incidents against the total number of DV incidents.

OBJT Crime category	OBJT Rate			
	April 08	May 08	June 08	Rolling average
Tier 3: Other Offences	29%	24%	26%	29%

Safeguard people

Hate crime detection rate

Hate Crime includes all crimes flagged within RMS with a Hate Crime indicator excluding those flagged purely as Police or Domestic.

Target >45%

Year to Date

	Central	Isle of Wight	North & East	Portsmouth	Southampton	Western	Force
Incidents	295	78	275	302	485	194	1629
Crimes	149	62	162	204	313	146	1036
Detections	48	26	47	57	117	56	351
Detection Rate	32.21%	41.94%	29.01%	27.94%	37.38%	38.36%	33.88%

Month

	Central	Isle of Wight	North & East	Portsmouth	Southampton	Western	Force
Incidents	28	11	31	43	85	23	221
Crimes	29	8	23	34	55	13	162
Detections	7	4	6	10	10	8	45
Detection Rate	24.14%	50.00%	26.09%	29.41%	18.18%	61.54%	27.78%

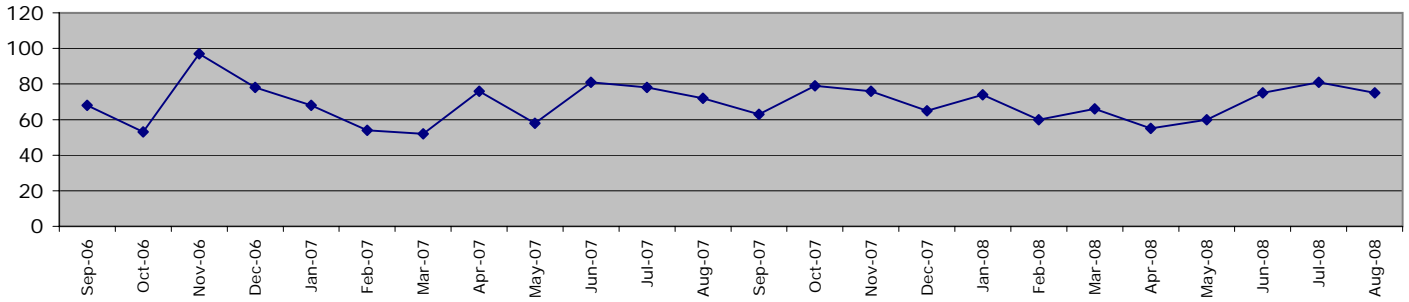
Sexual offender reoffending rate

This indicator was contained within the draft APACS/National Indicator Set measures, however following national consultation this was removed from both sets. Hampshire has not yet identified how this target will be measured in the absence of technical guidance.

Protect our communities

Road traffic casualties

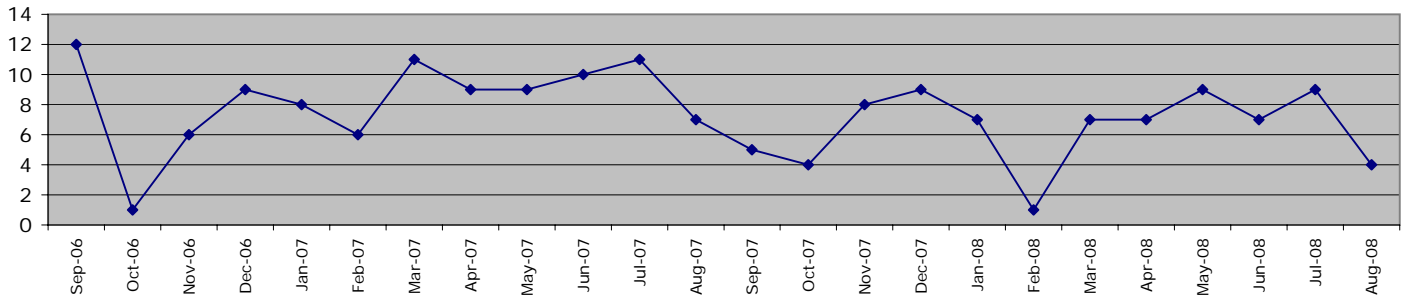
Fatal/serious injury casualties - all victims



The Force target 2008/2009 is for less than 938 casualties, which equates to less than 393 in 153 days YTD August 2008 = 346 casualties

	Central	Isle of Wight	North&East	Portsmouth	Southampton	Western	Force
1 April 2008 - 31 August 2008	66	39	73	43	41	84	346
of these, fatalities were	7	3	2	3	2	10	27
1 April 2007 - 31 August 2007	101	30	80	32	21	101	365

Fatal/serious injury casualties - victims under 16 years



The DETR target is for a 50% reduction in child casualties by 2010 from 164 to 82 (Target 2008/2009 = 94)

	Central	Isle of Wight	North&East	Portsmouth	Southampton	Western	Force
1 April 2008 - 31 August 2008	7	6	6	4	7	6	36
of these, fatalities were	0	0	0	0	0	1	1
1 April 2007 - 31 August 2007	11	4	7	11	3	10	46

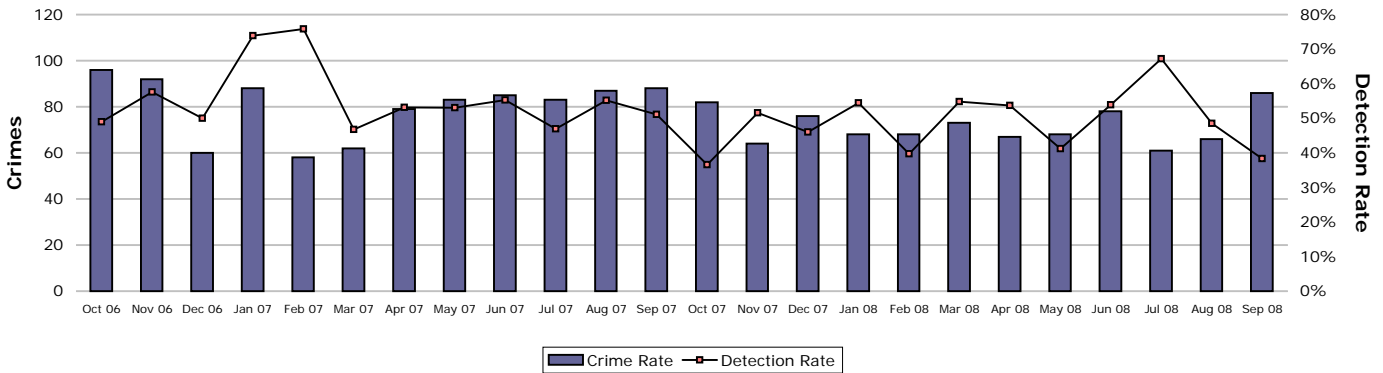
NOTE: YTD numbers may change as the accident record data are updated each month

NOTE: The casualties in East Hampshire have all been attributed to North & East OCU in the absence of a breakdown by OCUs

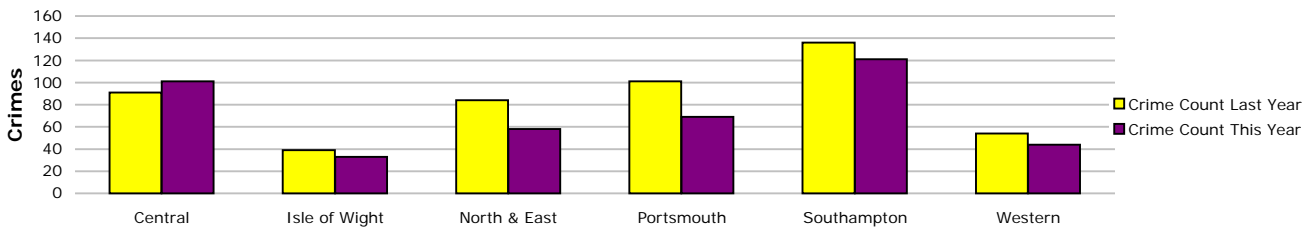
Prevent, reduce and detect crime

Serious violent crime

Serious violent crime consists of crimsec codes 1, 2, 4.1-4.4, 4.6, 4.8, 5A, 5B, 5C, 8F, 8H and 37.1



Crimes	Central	Isle of Wight	North & East	Portsmouth	Southampton	Western	Force
YTD Crimes	101	33	58	69	121	44	426
YTD Target	76	41	74	85	108	39	423
YTD 07/08 Crimes	91	39	84	101	136	54	505
This month	12	5	10	19	30	10	86
% change from 07/08	10.99%	-15.38%	-30.95%	-31.68%	-11.03%	-18.52%	-15.64%
MSG position	11 of 15	3 of 15	8 of 15	1 of 9	7 of 15	1 of 15	4 of 8



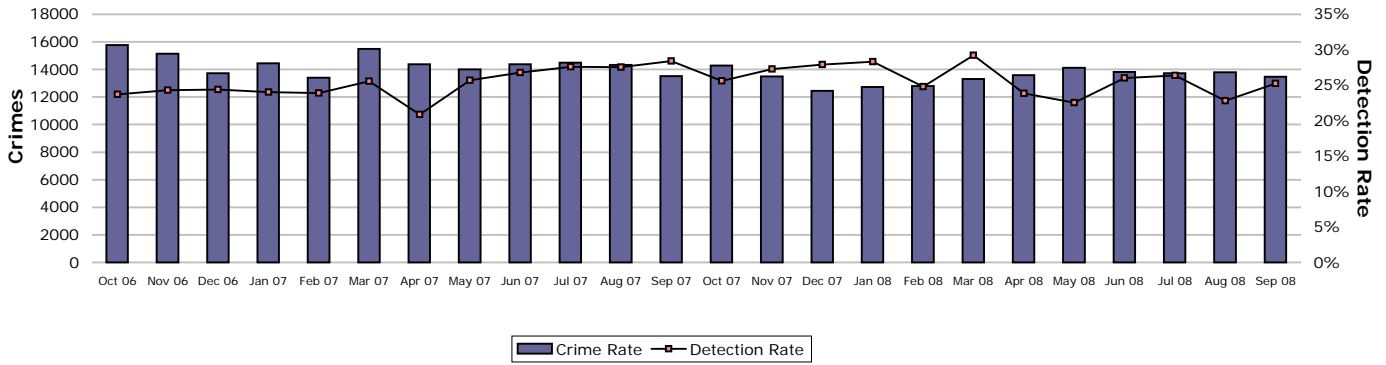
Detections	Central	Isle of Wight	North & East	Portsmouth	Southampton	Western	Force
Target >50%							
YTD Detection Rate	47.52%	69.70%	65.52%	44.93%	41.32%	50.00%	49.77%
This month	25.00%	40.00%	70.00%	21.05%	33.33%	70.00%	38.37%
YTD 07/08 Detections	75.82%	30.77%	63.10%	41.58%	48.53%	42.59%	52.48%
MSG position	4 of 15	1 of 15	3 of 15	1 of 9	7 of 15	3 of 15	2 of 8

Note: Detections refer to Sanction Detections ONLY



Prevent, reduce and detect crime

All crime



Crimes

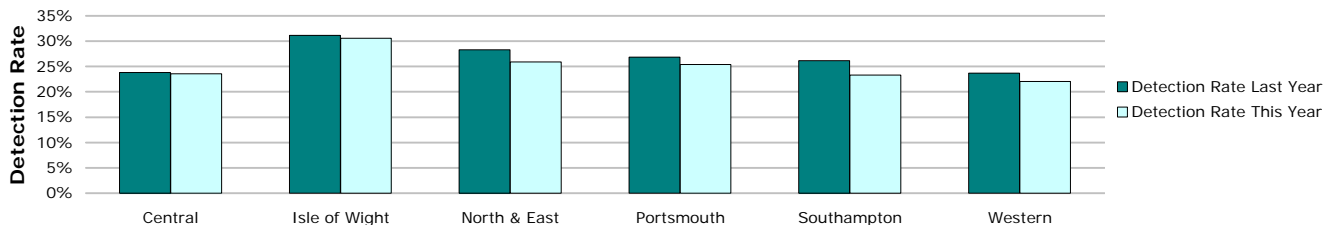
	Central	Isle of Wight	North & East	Portsmouth	Southampton	Western	Force
YTD Crimes	16617	5862	15501	12574	17087	14896	82537
YTD Target	16407	5546	15064	12425	14419	13820	77680
YTD 07/08 Crimes	17122	6204	15616	13354	17900	14896	85092
This month	2662	1041	2497	2048	2837	2387	13472
% change from 07/08	-2.95%	-5.51%	-0.74%	-5.84%	-4.54%	0.00%	-3.00%
MSG position	10 of 15	12 of 15	12 of 15	7 of 9	13 of 15	10 of 15	6 of 8



Detections

Target >25%	Central	Isle of Wight	North & East	Portsmouth	Southampton	Western	Force
YTD Detection Rate	23.57%	30.55%	25.93%	25.43%	23.29%	22.05%	24.46%
This month	23.37%	26.42%	25.19%	29.00%	23.41%	25.97%	25.27%
YTD 07/08 Detections	23.85%	31.13%	28.30%	26.86%	26.17%	23.66%	26.12%
MSG position	13 of 15	6 of 15	10 of 15	3 of 9	12 of 15	15 of 15	5 of 8

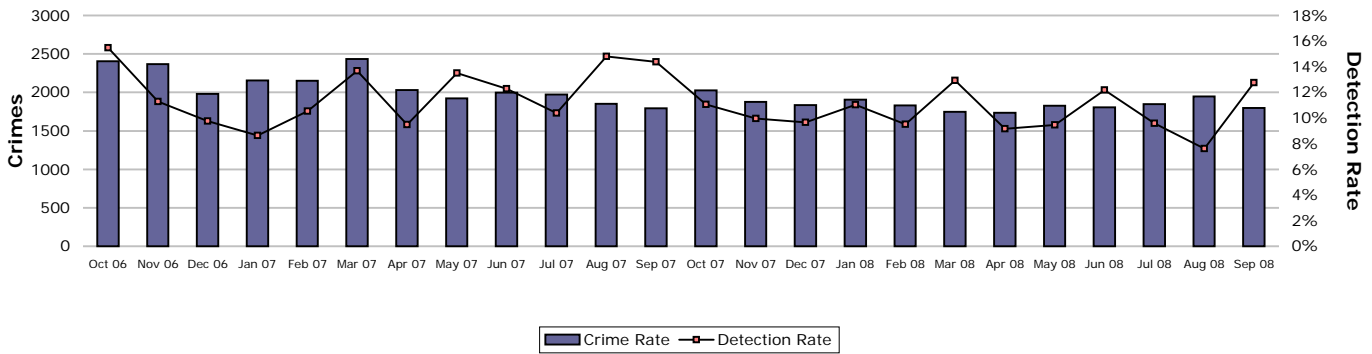
Note: Detections refer to Sanction Detections ONLY



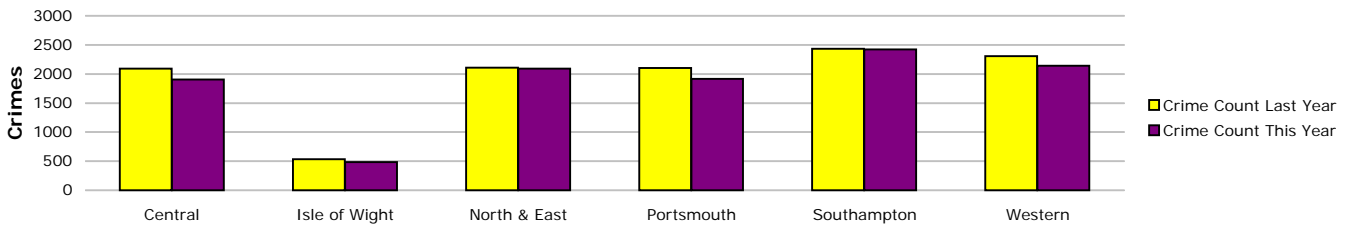
Prevent, reduce and detect crime

Serious acquisitive crime

Serious acquisitive crime consists of crimsec codes 28, 29, 34A, 34B, 37/2, 45 and 48

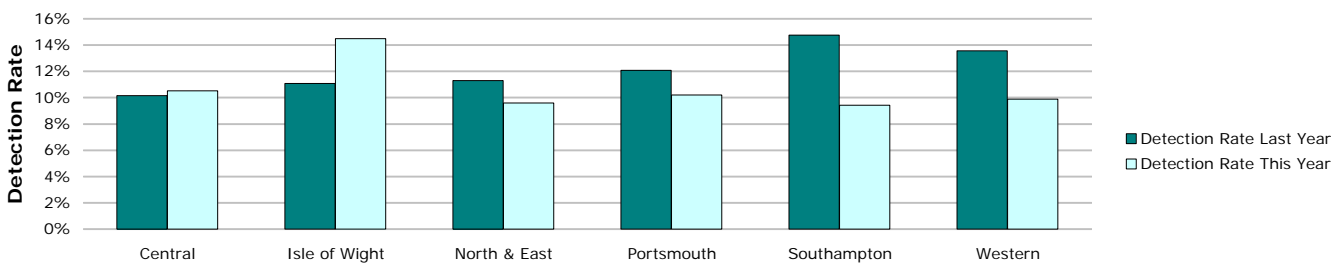


Crimes	Central	Isle of Wight	North & East	Portsmouth	Southampton	Western	Force
YTD Crimes	1903	483	2093	1913	2422	2142	10956
YTD Target	1985	476	2193	1840	2047	2228	10769
YTD 07/08 Crimes	2089	533	2106	2103	2432	2308	11571
This month	315	64	346	322	401	348	1796
% change from 07/08	-8.90%	-9.38%	-0.62%	-9.03%	-0.41%	-7.19%	-5.32%
MSG position	3 of 15	1 of 15	6 of 15	3 of 9	8 of 15	10 of 15	2 of 8



Detections	Central	Isle of Wight	North & East	Portsmouth	Southampton	Western	Force
Target >15%							
YTD Detection Rate	10.51%	14.49%	9.60%	10.19%	9.41%	9.90%	10.09%
This month	14.60%	6.25%	10.98%	13.98%	11.72%	14.08%	12.75%
YTD 07/08 Detections	10.15%	11.07%	11.30%	12.08%	14.76%	13.56%	12.40%
MSG position	13 of 15	5 of 15	15 of 15	4 of 9	12 of 15	9 of 15	7 of 8

Note: Detections refer to Sanction Detections ONLY



Prevent, reduce and detect crime

Gun crime rate

	Central	Isle of Wight	North & East	Portsmouth	Southampton	Western	Force
YTD September 2008	25	1	10	13	8	14	71
YTD September 2007	16	7	20	10	16	10	79
% change from 07/08	56.3%	-85.7%	-50.0%	30.0%	-50.0%	40.0%	-10.1%

Gun crime figures published reflect the APACS technical definition for 2008/09 which differs from that used in 2007/08. Manual checking has been undertaken to try to provide comparative 2007/08 figures, however it is not possible to provide completed comparable figures. In 2008/09 gun crime includes "where the victim is convinced of the presence of a firearm, even if it is concealed and there is evidence of the suspect's intention to create this impression"; these occurrences were not included in previously published 2007/08 data.

Knife crime rate

	Central	Isle of Wight	North & East	Portsmouth	Southampton	Western	Force
YTD September 2008	73	19	69	64	117	53	395
YTD September 2007	75	22	70	97	106	56	426
% change from 07/08	-2.7%	-13.6%	-1.4%	-34.0%	10.4%	-5.4%	-7.3%

Knife = knife or other sharp instrument (including broken glass/bottles) piercing the skin or, for threats and attempts, instruments normally capable of piercing the skin

Knife crime figures published reflect the APACS technical definition for 2008/09 which differs from that used in 2007/08. Manual checking has been undertaken to try to provide comparative 2007/08 figures, however it is not possible to provide completed comparable figures. In 2008/09 knife crime includes "where the victim is convinced of the presence of a knife, even if it is concealed and there is evidence of the suspect's intention to create this impression"; these occurrences were not included in previously published 2007/08 data.

Serious sexual crime OBTJ rate

The table below shows the percentage of persons brought to justice for serious sexual crimes against the total number of serious sexual crimes

OBTJ Crime category	OBTJ Rate			
	April 08	May 08	June 08	Rolling average
Tier 1: Serious Sexual Offences	36%	14%	53%	30%

Murder offences

2008/2009 target = < 16 murder offences

	Central	Isle of Wight	North & East	Portsmouth	Southampton	Western	Force
YTD September 2008	0	0	0	0	3	1	4
YTD September 2007	3	0	2	2	1	1	9
% change from 07/08							-55.6%

For more information, please go to the Specialist Operations - 7 OCU page

Asset recovery

Asset recovery is the sum total of the values of cash forfeitures and confiscation orders

	Central	Isle of Wight	North & East	Portsmouth	Southampton	Western	Force
April 2008	£38,187.90	£0.00	£18,413.50	£0.00	£0.00	£0.00	£56,601.40
May 2008	£0.00	£0.00	£0.00	£0.00	£69,735.00	£0.00	£69,735.00
June 2008	£76,739.37	£0.00	£140,060.50	£0.00	£8,676.00	£4,693.00	£230,168.87
July 2008	£0.00	£0.00	£0.00	£1,104.00	£2,035.00	£2,100.00	£5,239.00
August 2008	£0.00	£0.00	£22,699.60	£0.00	£15,469.55	-£19,520.00	£18,649.15
September 2008	£0.00	£0.00	£1,175.00	£4,447.95	£221,549.03	£21,427.00	£248,598.98
Cumulative total	£114,927.27	£0.00	£182,348.60	£5,551.95	£317,464.58	£8,700.00	£628,992.40

Prolific and other Priority Offenders (PPOs) convictions

Number of convictions recorded against identified, prolific and other priority offenders

Convictions	July 08	August 08
Persistent Young Offenders	224	No data
Priority Prolific Offenders	29	No data
Persistent Priority Prolific Young Offenders	1	No data
Young Offenders	312	No data

Note: The August 2008 data is not yet available due to issues with the Criminal Justice Management Information System (CJMIS)

Class A drugs sanction detections

	Central	Isle of Wight	North & East	Portsmouth	Southampton	Western	YTD September 2008 target			201
							Crime	Operations	No OIC	Force
YTD September 2008	8	21	34	13	38	28	36	1	3	182
YTD September 2007	21	13	39	15	19	7	10	0	9	133

Drug Intervention Measures (DIMs)

	Central	Isle of Wight	North & East	Portsmouth	Southampton	Western	Crime	Force
YTD September 2008	35	13	13	46	71	17	0	195
YTD September 2007	4	13	40	5	18	9	0	89
% change from 07/08	11.4%	100.0%	307.7%	10.9%	25.4%	52.9%	0.0%	45.6%

Note: The large variance between YTD 2007 and YTD 2008 is partially due to changes in the process for submissions up until Sept 07

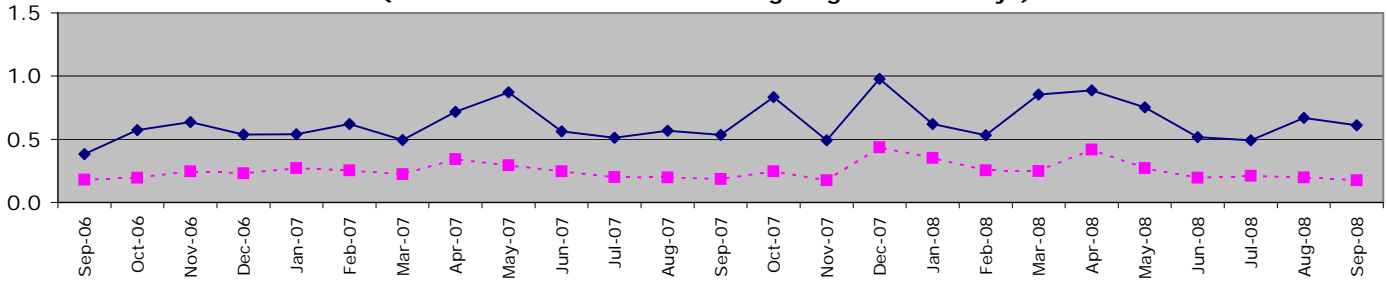
Organisational management

All Police officer sickness YTD = **3.92**

All Police officer sickness Sept = **0.60**

Police officers in OCUs

**Sickness and injury absence days per officer by month
(broken line shows data excluding long-term sick days)**

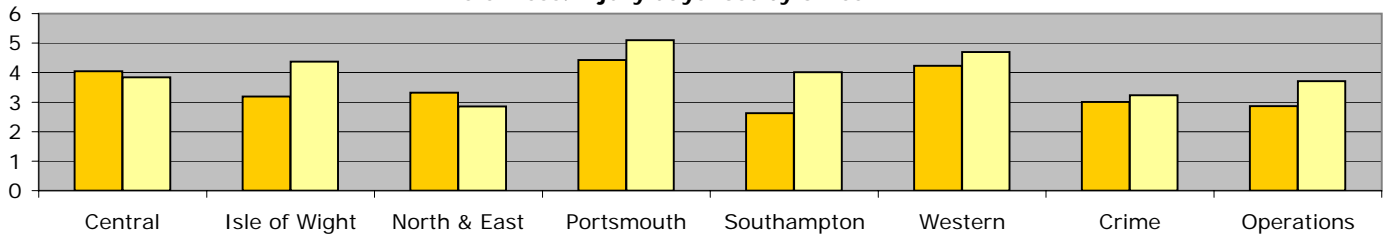


Force target for 08/09 = 7.5 days or fewer per officer (3.75 for 6 months) **YTD = 3.93 days lost per officer**

	Central	Isle of Wight	North & East	Portsmouth	Southampton	Western	Crime	Operations	OCU Totals
YTD Apr 08 - September 08	3.85	4.37	2.85	5.10	4.02	4.70	3.24	3.71	3.93
YTD Apr 07 - September 07	4.05	3.19	3.32	4.43	2.62	4.23	3.01	2.86	3.50
This month	0.41	0.51	0.54	0.77	0.82	0.76	0.55	0.55	0.61
% change	-5.0%	36.9%	-14.1%	15.3%	53.2%	11.1%	7.6%	29.6%	12.3%

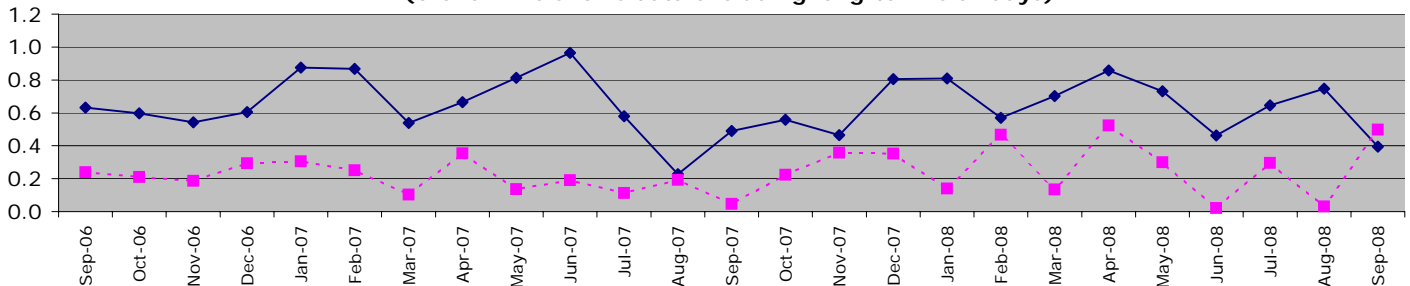
"Operations" includes SO Portfolio and Projects Staff

Sickness/injury days lost by officer YTD



Police officers not in OCUs

**Sickness and injury absence days per police officer by month
(broken line shows data excluding long-term sick days)**

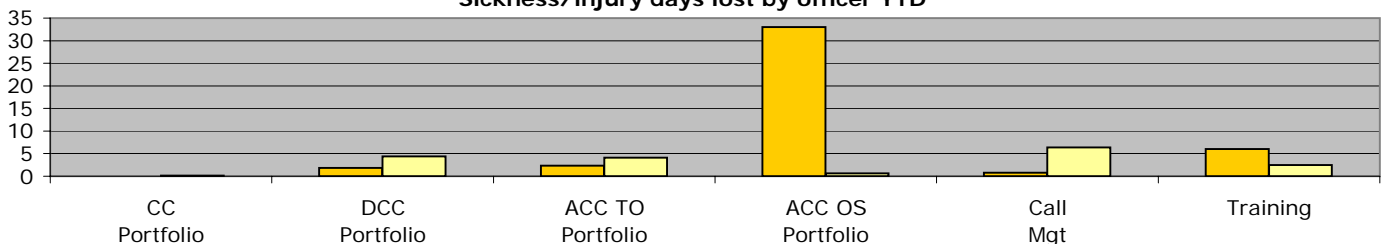


Force target for 08/09 = 7.5 days or fewer per officer (3.75 for 6 months) **YTD = 3.84 days lost per officer**

	CC Portfolio	DCC Portfolio	ACC TO Portfolio	ACC OS Portfolio	DoF Portfolio	Call Mgt	Training	Non-OCU Totals
YTD Apr 08 - September 08	0.17	4.39	4.14	0.63	N/A	6.39	2.50	3.84
YTD Apr 07 - September 07	0.00	1.84	2.34	33.00	N/A	0.77	6.02	3.86
This month	0.00	0.02	0.43	0.00	N/A	0.63	0.58	0.40
% change	N/A	138.6%	77.1%	-98.1%	N/A	733.2%	-58.5%	-0.5%

ACC OS Portfolio excludes Call Mgt & Training figures which are reported on separately. No police officers work within DoF Portfolio.

Sickness/injury days lost by officer YTD



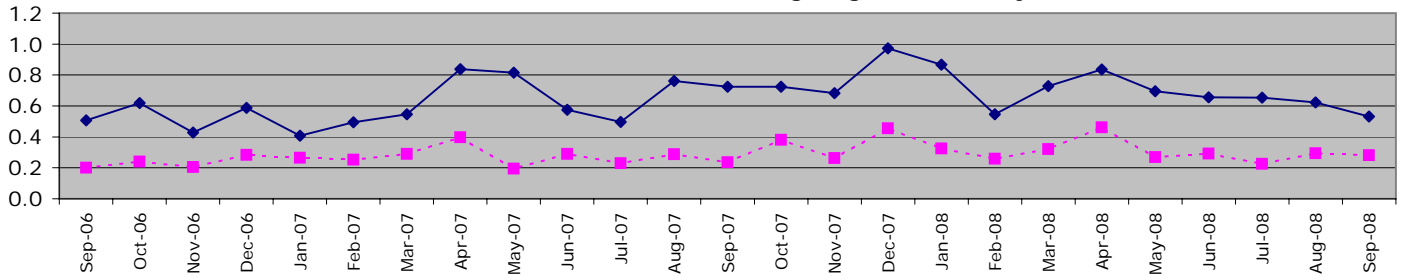
Organisational management

All Police staff sickness YTD = **4.00**

All Police staff sickness Sept = **0.60**

Police staff in OCU's

**Sickness and injury absence days per police staff member by month
(broken line shows data excluding long-term sick days)**

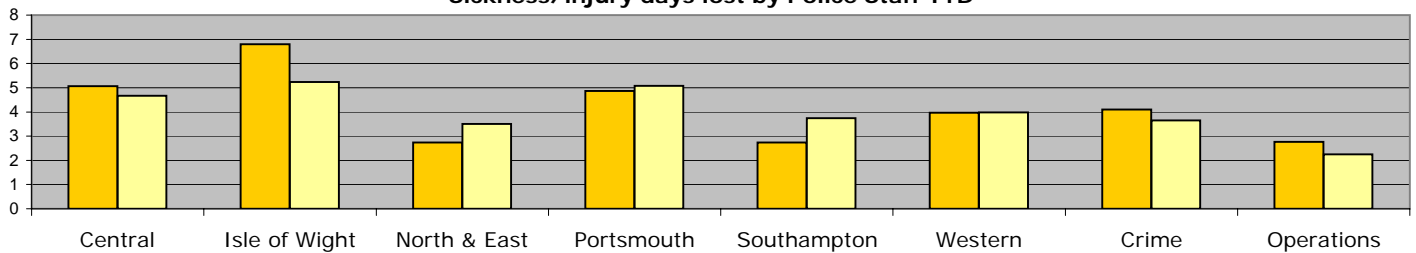


Force target for 08/09 = 7.5 days or fewer per staff (3.75 for 6 months) **YTD = 3.99 days lost per staff member**

	Central	Isle of Wight	North & East	Portsmouth	Southampton	Western	Crime	Operations	OCU Totals
YTD Apr 08 - September 08	4.67	5.24	3.50	5.08	3.74	3.98	3.65	2.25	3.99
YTD Apr 07 - September 07	5.06	6.80	2.73	4.87	2.74	3.96	4.09	2.76	4.02
This month	0.59	0.51	0.41	0.67	0.71	0.33	0.57	0.37	0.53
% change	-7.7%	-22.9%	28.2%	4.4%	36.5%	0.3%	-10.8%	-18.3%	53.4%

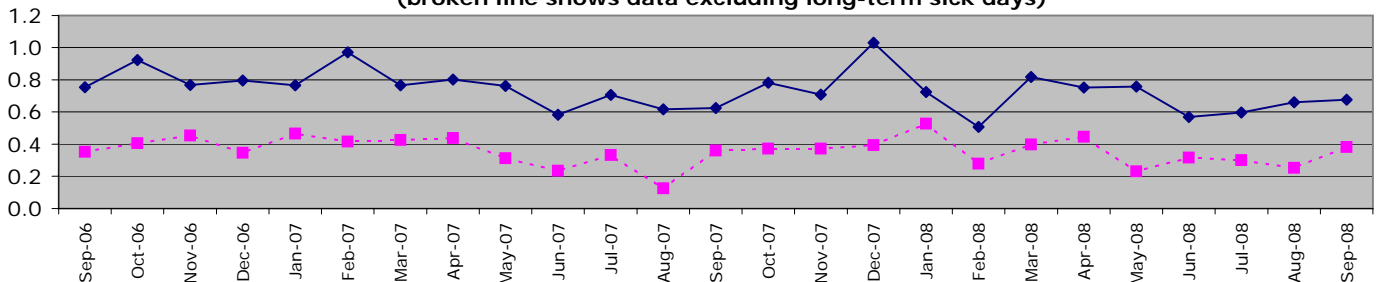
"Operations" includes SO Portfolio and Projects Staff

Sickness/injury days lost by Police Staff YTD



Police staff not in OCU's

**Sickness and injury absence days per police staff member by month
(broken line shows data excluding long-term sick days)**

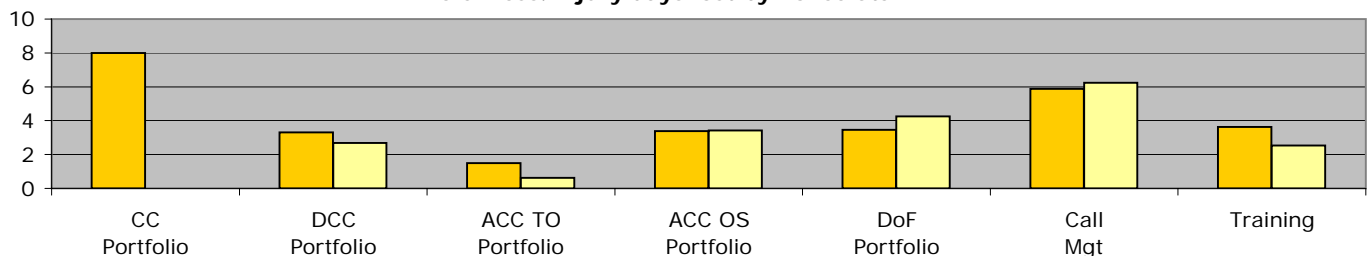


Force target for 08/09 = 7.5 days or fewer per staff (3.75 for 6 months) **YTD = 4.02 days lost per staff member**

	CC Portfolio	DCC Portfolio	ACC TO Portfolio	ACC OS Portfolio	DoF Portfolio	Call Mgt	Training	Non-OCU Totals
YTD Apr 08 - September 08	0.00	2.68	0.62	3.42	4.25	6.24	2.54	4.02
YTD Apr 07 - September 07	8.00	3.30	1.50	3.39	3.45	5.88	3.63	4.14
This month	0.00	0.62	0.18	0.56	1.20	0.79	0.35	0.68
% change	-100.0%	-19.0%	-58.9%	0.9%	23.0%	6.3%	-30.1%	-2.9%

ACC OS Portfolio excludes Call Mgt & Training figures which are reported on separately.

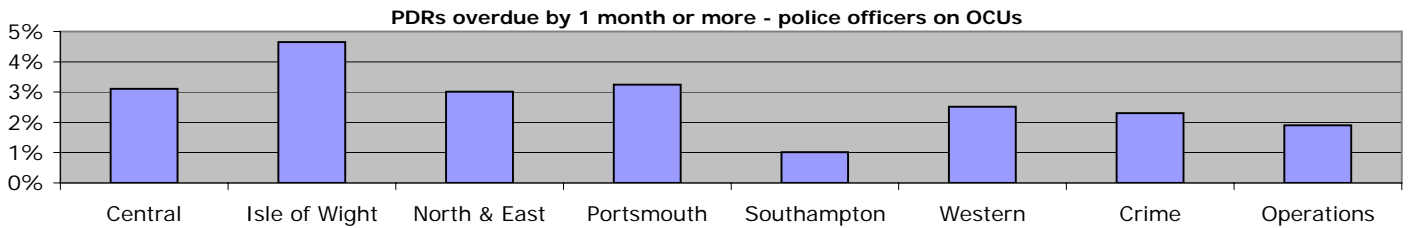
Sickness/injury days lost by Police Staff YTD



Organisational management

Overdue PDRs

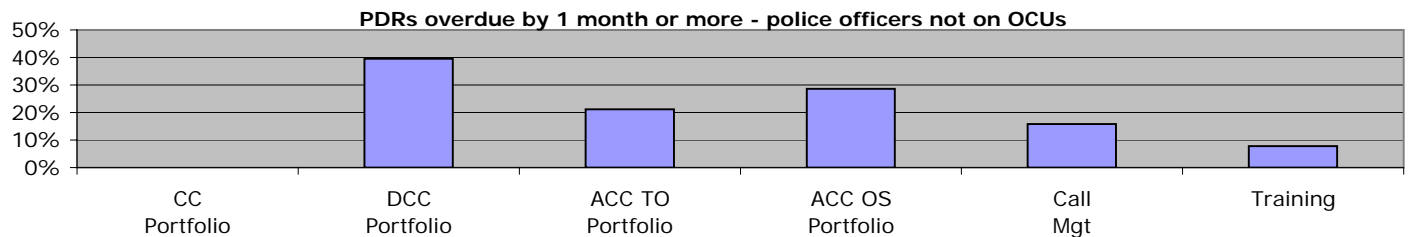
Police officer PDRs - police officers in OCUs



September 2008	Central	Isle of Wight	North & East	Portsmouth	Southampton	Western	Crime	Operations
Population	643	215	564	431	494	517	434	420
Overdue	20	10	17	14	5	13	10	8
% overdue	3.1%	4.7%	3.0%	3.2%	1.0%	2.5%	2.3%	1.9%

"Operations" includes SO Portfolio and Projects Staff

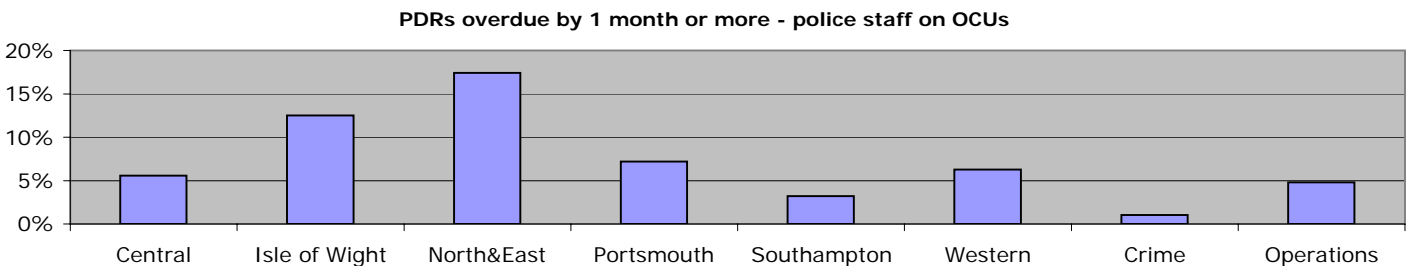
Police officer PDRs - police officers not on OCUs



September 2008	CC Portfolio	DCC Portfolio	ACC TO Portfolio	ACC OS Portfolio	DoF Portfolio	Call Mgt	Training
Population	8	43	33	7	N/A	38	64
Overdue	0	17	7	2	N/A	6	5
% overdue	0.0%	39.5%	21.2%	28.6%	N/A	15.8%	7.8%

ACC OS Portfolio excludes Call Mgt & Training figures which are reported on separately. No police officers work within DoF Portfolio

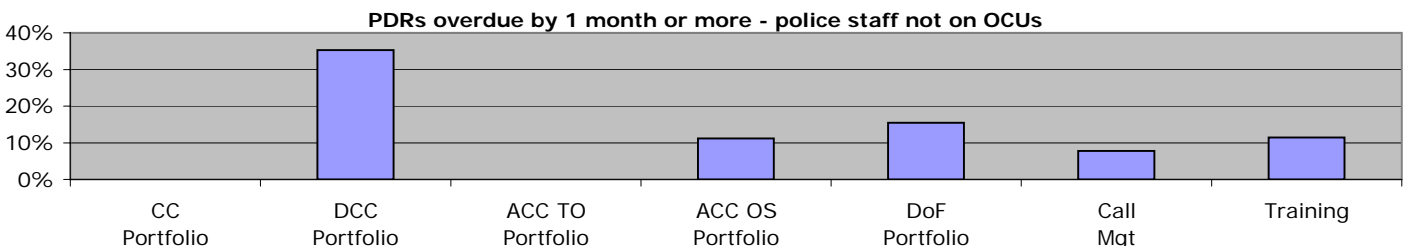
Police staff PDRs - police staff in OCUs



September 2008	Central	Isle of Wight	North&East	Portsmouth	Southampton	Western	Crime	Operations
Population	233	104	201	195	218	207	294	146
Overdue	13	13	35	14	7	13	3	7
% overdue	5.6%	12.5%	17.4%	7.2%	3.2%	6.3%	1.0%	4.8%

"Operations" includes SO Portfolio and Projects Staff

Police staff PDRs - police staff not in OCUs



September 2008	CC Portfolio	DCC Portfolio	ACC TO Portfolio	ACC OS Portfolio	DoF Portfolio	Call Mgt	Training
Population	1	326	40	440	149	414	96
Overdue	0	115	0	49	23	32	11
% overdue	0.0%	35.3%	0.0%	11.1%	15.4%	7.7%	11.5%

ACC OS Portfolio excludes Call Mgt & Training figures which are reported on separately

Organisational management

Minority Ethnic Officer Recruitment

	All recruits	Minority ethnic recruits	%
YTD September 2008	65	1	2%

Female Officer Representation

	Male strength	Female strength	%
YTD September 2008	2819.1	1028.8	26.7%

NCRS compliance

	Central	Isle of Wight	North & East	Portsmouth	Southampton	Western	Crime
NCRS audits	Fair 82%	Fair 82%	Fair 84%	Poor 72%	Poor 64%	Fair 85%	No data

Note: NCRS audit data relates to a rolling 12 mth period

Self-Inspection	91.0%	85.0%	80.0%	66.0%	81.0%	90.0%	No data

Note: Self-Inspections - only appealed records are moderated by the Force Crime Registrar

Budget spend

The actual spend to the end of August 2008 was £119.7m. This gives a projected spend for the force at the end of the financial year of £297.4m, which will be an overspend of £3.55m against the agreed budget.

The force is taking measures to eliminate this overspend during the course of the current financial year.

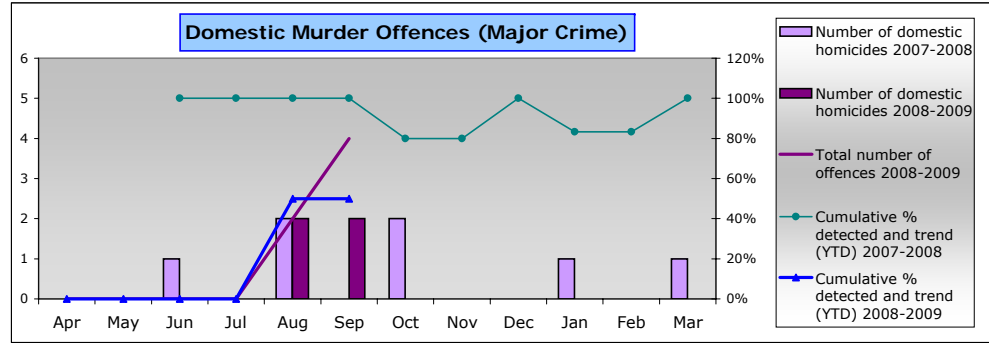
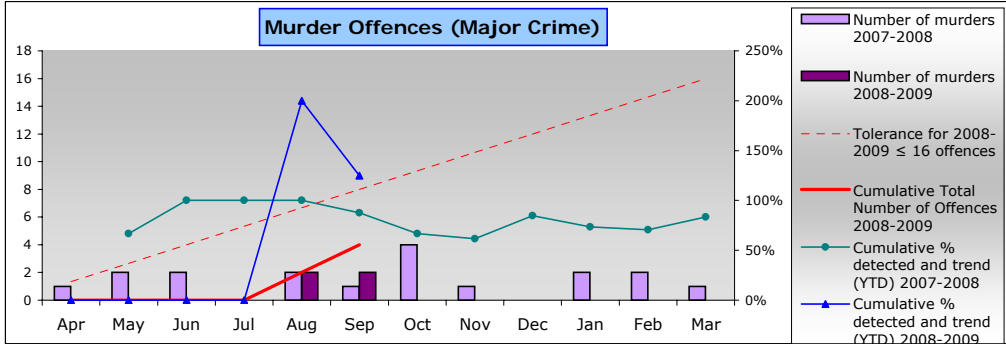
	Central	Isle of Wight	North & East	Portsmouth	Southampton	Western	Crime	Operations
Projected overspend 2008/2009	£321,000	-£7,000	£503,000	£568,000	-£28,000	£153,000	£169,000	£612,000

Efficiency savings

The Authority needs to maximise efficiency gains both due to its budgetary constraints and in order to achieve value for money. In addition, there is a Home Office target to deliver recurring efficiency or productivity gains equivalent to 9.3% (some £30m) of the Authority's 2008/09 'Gross Revenue Expenditure' by the end of 2010/11. The Authority and Force are working to achieve, and if possible exceed, the target through initiatives identified and monitored by the Efficiency Strategy Group.

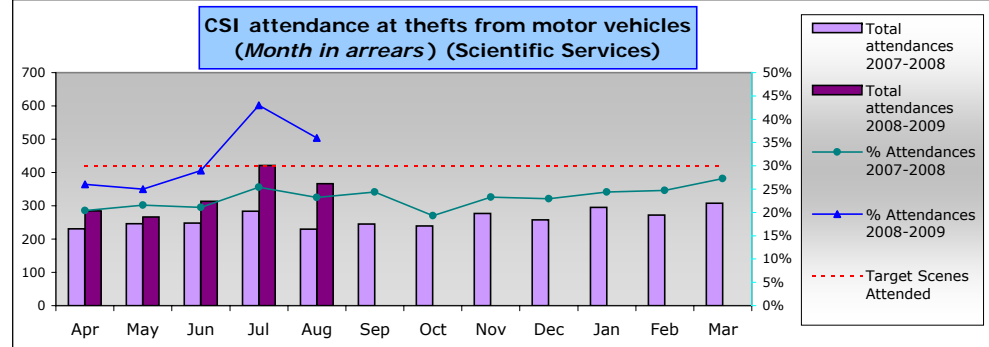
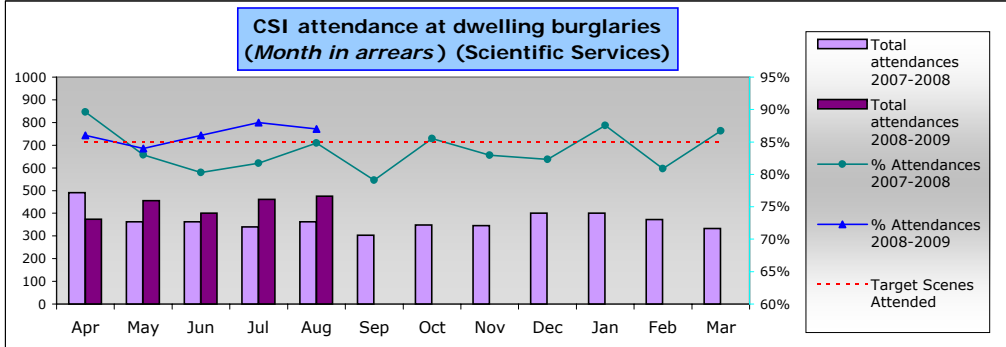
An efficiency saving register that is used as a tracking tool is now monitoring progress of ongoing efficiency initiatives valued at £16.06m across the current and future financial years. Some of the initiatives listed are not in a position yet to quantify the potential efficiency savings deliverable. It will be seen that there are also a number of initiatives listed on the register which are only at the start up stage of the project life cycle and are unlikely to deliver productivity gains within the required timeframe: they are nonetheless important as efficiency is an ongoing long term requirement.

Specialist Operations - 7 OCU



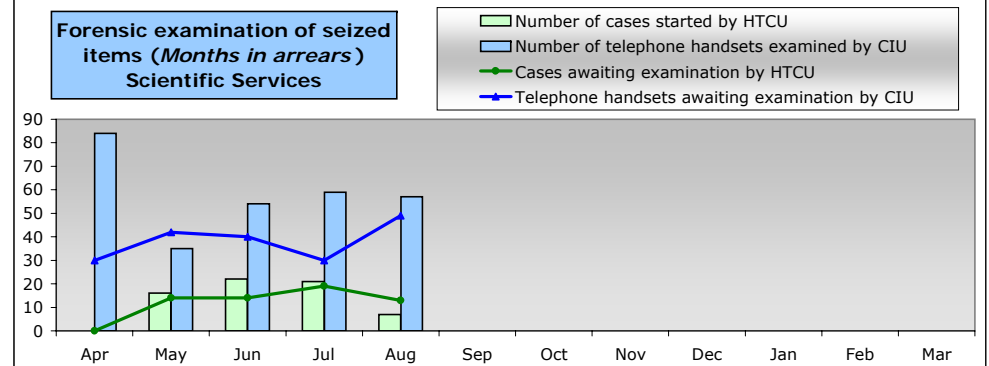
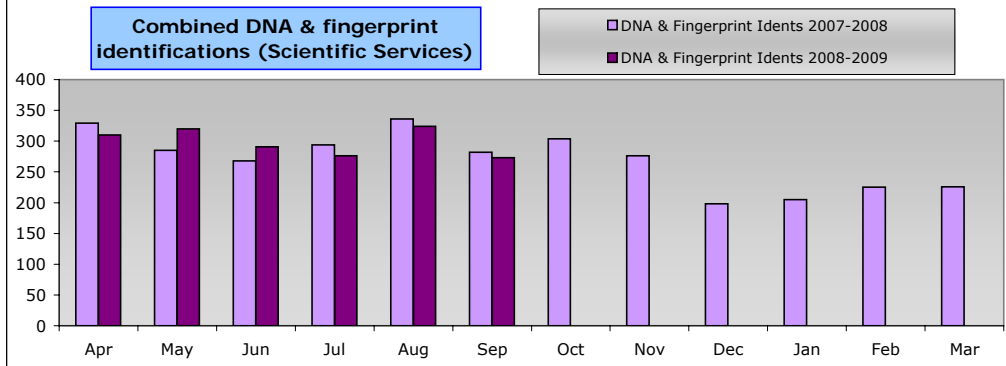
All murder offences this year compared to last year and detection rates
 The target is no more than 16 offences for the current year
 Detection target for murder is 100%

Domestic murder offences this year compared to last year and detection rates
 Detection target for murder is 100%



Burglary dwelling scene attendance rates. Target is no less than 85%

Theft from motor vehicle scene attendance rates. Target is no less than 30%

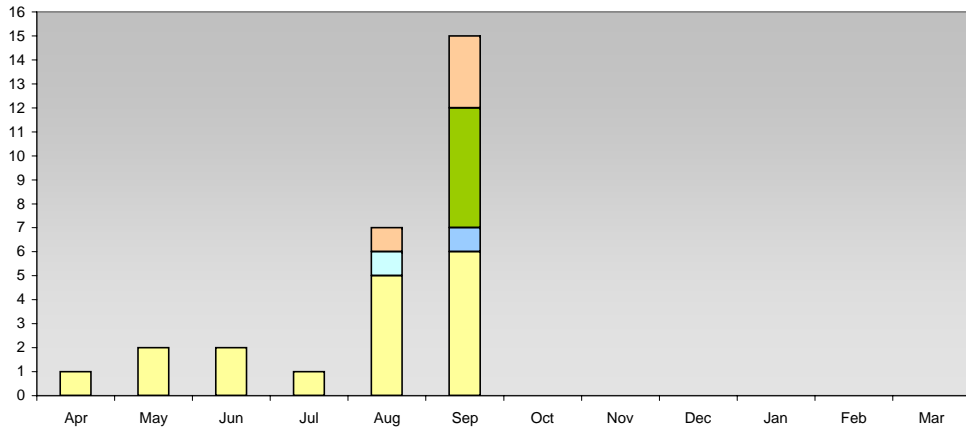


Combined DNA & fingerprint identifications this year compared to last year

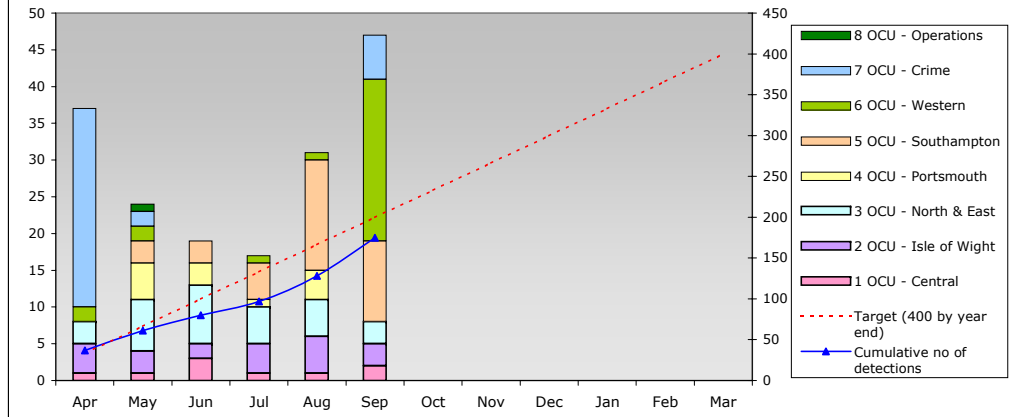
Number of cases started & cases awaiting examination by HTCUCI
 NB: Cases include all computing equipment not just computers (eg monitors, drives, etc...)
 Number of telephone handsets examined & telephone handsets awaiting examination by CIU

Specialist Operations - 7 OCU cont'd

Major incidents showing 'SO' units providing assistance/resources provided to 'TO'



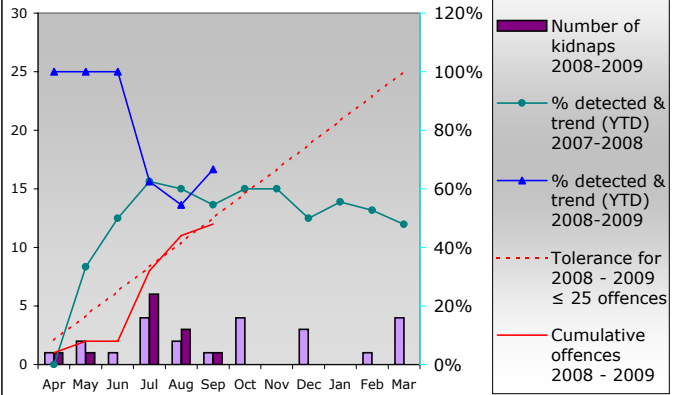
Number of Class A drug supply detections



Serious/major incidents where 'SO' expertise or resources were utilised to assist or manage the investigation

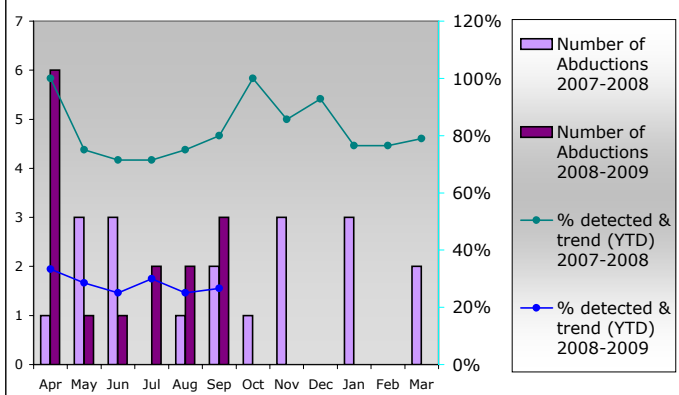
Number of detections for offences of Class A drug supply by month by OCU and total detections to date compared with Force target of 400 for year.

Kidnaps (Serious and Organised Crime Unit)



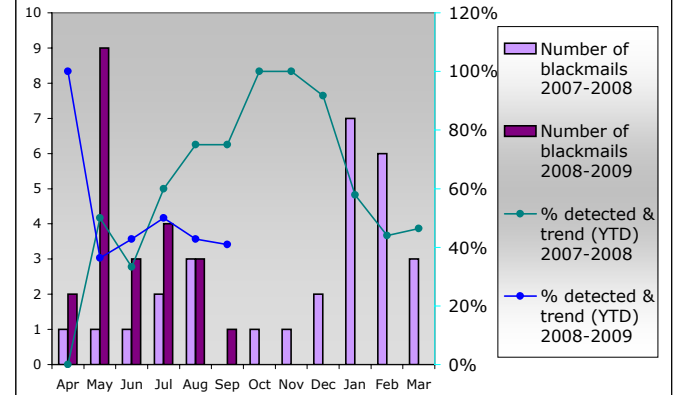
All kidnaps within force this year compared to last year and detection rates. Target for 2008/09 is no more than 25 offences (10% reduction on 2007/08)

Abductions (Serious and Organised Crime Unit)



All abductions within force this year compared to last year and detection rates

Blackmails (Serious and Organised Crime Unit)



All blackmails within force this year compared to last year and detection rates.

Specialist Operations - 8 OCU

Operational Availability				
	Current	YTD 07	Current	YTD 08
ASU	97%	96%	100%	99%
CT&DE	Not previously recorded		100%	92%
DSU	77%	84%	86%	81%
FSU	91%	87%	90%	89%
MSU	99%	91%	86%	90%
OPPU	87%	94%	93%	96%
SFO	81%	77%	88%	86%
ARV	Not previously recorded		75%	89%
RPU	Not previously recorded		Not currently recorded	
Total	88%	85%	86%	88%

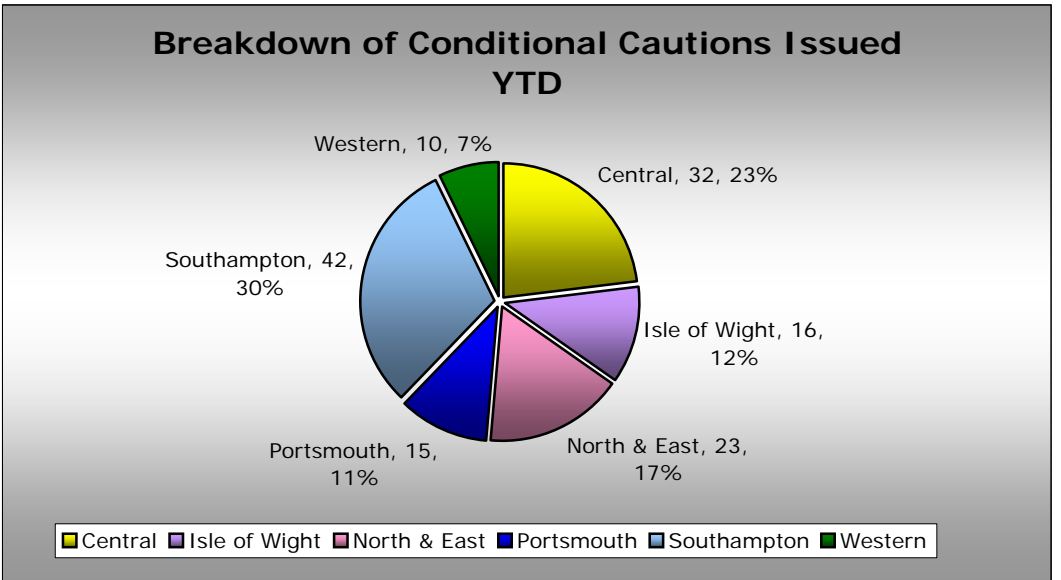
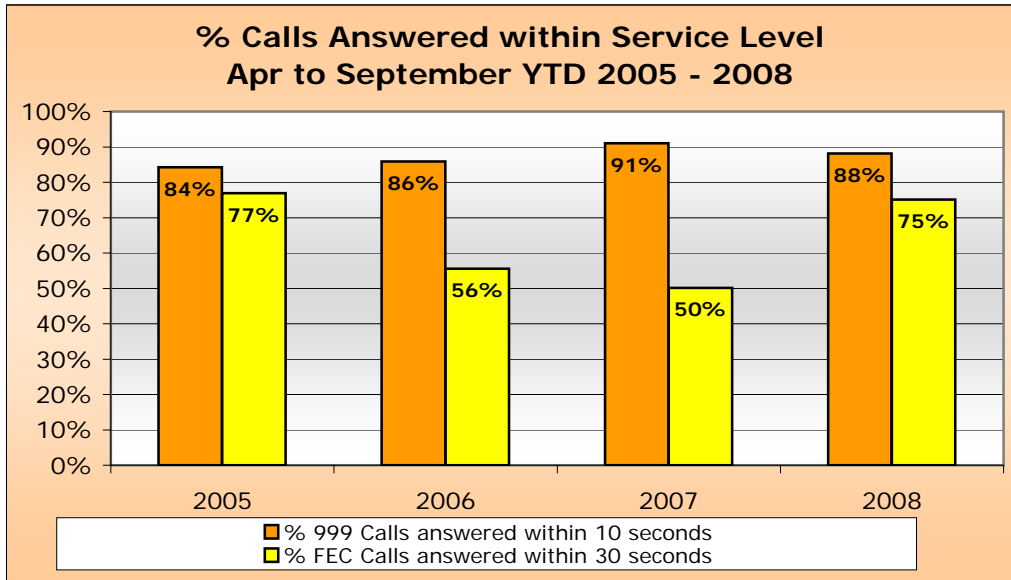
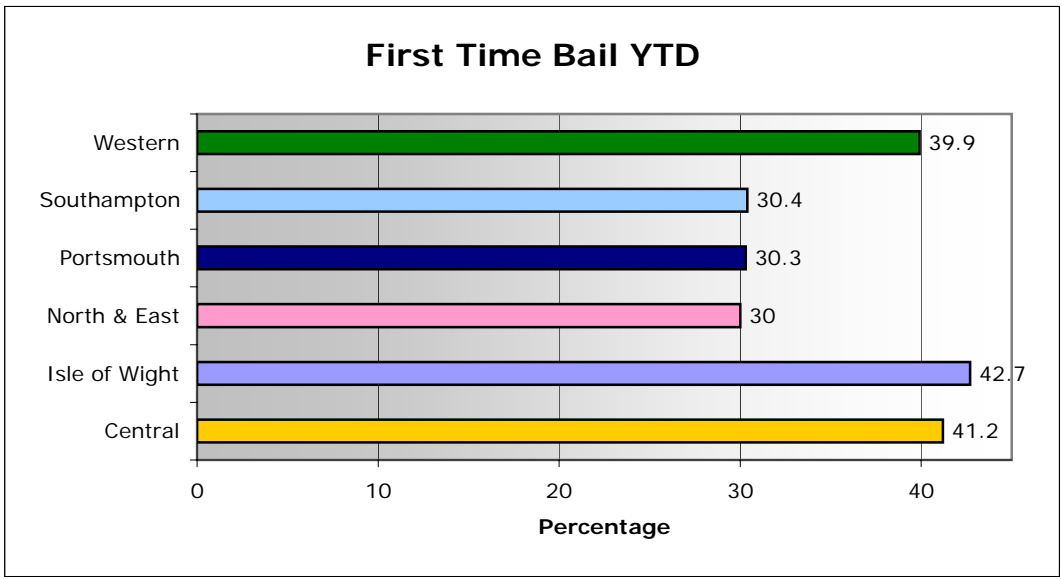
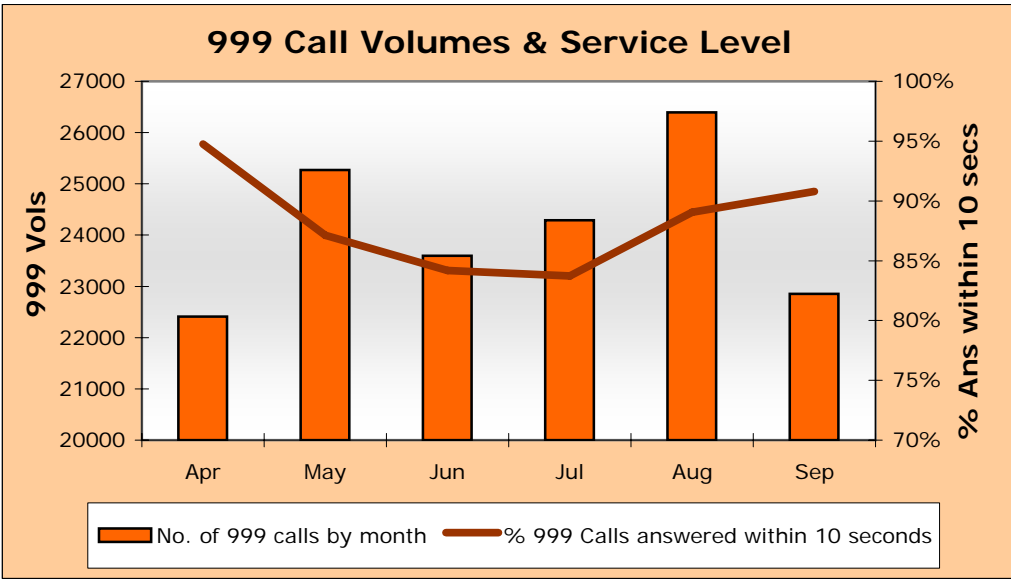
Pre-Planned Operations YTD								
Op. Name	OCU Supported							Total
	1	2	3	4	5	6	Other	
Radon	0	0	0	0	0	0	0	0
Advasar	0	0	2	0	0	0	0	2
Cabot	0	0	0	0	0	0	0	0
Op Custodian	0	0	0	0	2	0	0	2
Bestival	0	13	0	0	0	0	0	13
Viper	0	8	0	0	0	0	0	8
Other	7	3	5	15	23	24	36	113
Total Ops.	7	24	7	15	25	24	36	138
Arrests	2	171	1	7	7	3	15	206
FPNs	31	1	32	141	13	94	0	312
Seizures	3	0	1	0	0	10	0	14
Other	48	525	5	8	31	79	102	798
Total Results	84	697	39	156	51	186	117	1330

The Bestival Ops showed good results with £104,000 of controlled substances seized and the lowest recorded

ANPR Operations YTD								
	OCU Supported							Total
	1	2	3	4	5	6	Other	
No. of Ops	2	0	0	1	5	13	1	22
Arrests	1	0	0	1	0	18	1	21
FPNs	2	0	0	0	2	18	8	30
Seizures	3	0	0	1	0	25	3	32
Other	5	0	0	1	0	52	0	58
Total	11	0	0	3	2	113	12	141

Operational Services

Issues of the month: Measuring **conditional cautions** since April 2008, we can see variation across the OCUs in the use of this disposal. **Bail rates** are shown Year to Date, demonstrating a large variance across force. This has no correlation to the OCUs' ability to score better charge to NFA rates.



Victim Focus

Hampshire Constabulary has always placed victim care as a high priority. With the increasing focus nationally, information is now included within this Summary to illustrate how we manage our victims of crime from initial notification of them becoming a victim to referrals to Victim Support. Also included is performance information centred around compliance with the Victims Code.

APACS indicators for user satisfaction

iQuanta data for MSG for the 12 months up to June 2008

Crime type	MSG position	1 st in MSG
<u>Vehicle crime</u>		
Ease of contact	3/8	Hertfordshire
Actions taken	6/8	Hertfordshire
Follow up	6/8	Hertfordshire
Treatment	5/8	Hertfordshire
OVERALL	6/8	Hertfordshire
<u>Burglary</u>		
Ease of contact	2/8	Hertfordshire
Actions taken	1/8	Hampshire
Follow up	2/8	Sussex
Treatment	2/8	Hertfordshire
OVERALL	3/8	Hertfordshire
<u>Violent crime</u>		
Ease of contact	1/8	Hampshire
Actions taken	3/8	Essex
Follow up	5/8	Hertfordshire
Treatment	2/8	Hertfordshire
OVERALL	2/8	Sussex
<u>RTC</u>		
Ease of contact	2/8	Hertfordshire
Actions taken	2/8	Hertfordshire
Follow up	2/8	Hertfordshire
Treatment	2/8	Hertfordshire
OVERALL	2/8	Hertfordshire
<u>All users (excluding racist incidents)</u>		
Ease of contact	2/8	Hertfordshire
Actions taken	3/8	Hertfordshire
Follow up	2/8	Hertfordshire
Treatment	2/8	Hertfordshire
OVERALL	2/8	Hertfordshire

Victim Focus

Summary results of Dip-sample Victim Code Compliance checks (latest month for available data followed by YTD)

% where victim was informed within 5 days of an investigation being closed

	Central	Isle of Wight	North & East	Portsmouth	Southampton	Western	Force
August 2008	100%	100%	100%	No data received	70%	No data received	93%
YTD	100%	97%	99%	No data received	66%	95%	91%

% where the victim has been updated on a monthly basis (if applicable)

	Central	Isle of Wight	North & East	Portsmouth	Southampton	Western	Force
August 2008	100%	80%	88%	No data received	100%	No data received	92%
YTD	100%	82%	86%	No data received	93%	93%	91%

% where the victim was notified upon filing (if applicable)

	Central	Isle of Wight	North & East	Portsmouth	Southampton	Western	Force
August 2008	100%	95%	90%	No data received	100%	No data received	96%
YTD	100%	93%	84%	No data received	100%	90%	93%

Victim support status for crimes

Month of Sept 2008	Central	Isle of Wight	North & East	Portsmouth	Southampton	Western	Force	Force %
Victim informed of VSS accepted	256	57	183	130	332	259	1217	9.03%
Victim informed of VSS declined	1658	600	1523	1215	1756	1464	8216	60.99%
VSS aware	65	13	47	15	21	30	191	1.42%
Victimless crime	617	351	587	594	610	604	3363	24.96%
Not stated	66	20	157	94	118	30	485	3.60%
Total crimes	2662	1041	2497	2048	2837	2387	13472	N/A
% referred	12.06%	6.72%	9.21%	7.08%	12.44%	12.11%	10.45%	N/A

YTD to Sept 2008	Central	Isle of Wight	North & East	Portsmouth	Southampton	Western	Force	Force %
Victim informed of VSS accepted	1565	358	1177	841	2070	1529	7540	9.14%
Victim informed of VSS declined	10699	3832	9935	7414	10975	9690	52545	63.66%
VSS aware	366	57	271	146	150	228	1218	1.48%
Victimless crime	3911	1544	3772	3663	3687	3407	19984	24.21%
Not stated	76	71	346	510	205	42	1250	1.51%
Total crimes	16617	5862	15501	12574	17087	14896	82537	N/A
% referred	11.62%	7.08%	9.34%	7.85%	12.99%	11.80%	10.61%	N/A