

Performance Profile October 2009



Summary

2009/10 Reporting Year

This document contains a strategic overview of the Constabulary's performance. It has a variety of performance measures within it. The format of the profile has been aligned to the Policing Priorities identified by the Control Strategy. It provides information on our performance against Force targets, some of the APACS Indicators and the Policing Pledge. It also aims to provide supplementary information to assist in understanding reasons behind the performance in these areas. It has been designed as a headline document that will enable our customers, both internally and externally, to easily assess performance information for key domains.

At the front of the document there are several matrices that reflect our performance against our targets, firstly year to date and secondly relevant for that particular month.

Performance in key areas is then explored in more depth with an indication of where each measure has originated - for example, APACS Indicator or a Force Control Strategy (FCS) measure.

Where applicable, within the document, MSG (Most Similar Group) data is published along with the crime and detection data. MSGs are calculated by the Home Office based on a number of socio-demographic & geographic variables which are strongly linked to crime/incident levels and the fear of crime. These groups provide a benchmark for comparison of crime and detection rates. Below the applicable crime tables there are three rows relating to MSG data. The first provides the MSG position for the OCU/Force for that crime type. The second displays OCU Actual, this is the number of offences per 1,000 population. The third row shows the MSG Average which is the total number of offences per 1,000 population divided by the number within the MSG. The same three rows are provided in relation to detection data, where data is provided in % figures rather than per 1,000 population.

Please note: iQuanta data is provisional. Within the profile, Hampshire data is published and compared against the MSG average. The other forces within Hampshire's MSG are: Avon and Somerset, Bedfordshire, Essex Hertfordshire, Kent, Sussex and Thames Valley. We are unable to provide figures from iQuanta for these forces, due to the provisional nature of this data.

This document is then taken forward by key stakeholders within the organisation to the Force Performance Review Group, where it is used to highlight areas of good performance and those for development.

Crime OCU contribute to the following areas within this document, either via investigation, forensic support, and/or review of these crimes: homicide, serious violent, sexual and acquisitive crime, class A drug seizures, domestic violence/hate crime, FIU form submissions, gun/knife crime (where this results in a major investigation/forensic support), SO assistance to TO, sickness and PDRs.

This is an evolving document and as such, the content may alter over time and any feedback would be welcomed by the Performance Review Team.

MSG Colour Key

Force	OCU
1-2	1-4
3-4	5-8
5-6	9-12
7-8	13-15

Year to date and Monthly performance matrices

4-6

including notes on matrices terminology

Policing Pledge Scorecard

7 Policing Pledge Scorecard

Providing an excellent service

8	National public confidence measure	APACS 2.2	FCS	iQuanta
8	Local confidence survey data			Consultation & Research Team
8	Overall satisfaction	APACS 1.1	FCS	Consultation & Research Team
8	Being kept informed		FCS	Consultation & Research Team
9	Comparative satisfaction of minority ethnic groups	APACS 1.2		Consultation & Research Team
9	Satisfaction of victims of racist incidents	APACS 1.3		Consultation & Research Team
9	MSG user satisfaction data			Consultation & Research Team
9-10	Responding to victims of crime			Citizen Focus Inspector
10	Letters of appreciation, reports of incivility, expression of dissatisfaction			Professional Standards Department
11	Responding to public contact (inc call handling data)			Call Management

An active presence in every neighbourhood

12	Rowdy and nuisance behaviour		FCS	Business Objects
12	Vehicle nuisance/Inappropriate vehicle use		FCS	Business Objects
13	Safer Neighbourhood Teams			CARM team & Personnel
14	Criminal damage		FCS	Business Objects

Catching criminals and managing offenders

15	All crime and sanction detections		FCS	Business Objects
16	Serious violent crime, sanction detections and OBJT rate	APACS 5.1&6.1	FCS	Business Objects
17	Assault with less serious injury	APACS 5.3	FCS	Business Objects
18	Serious acquisitive crime, sanction detections and OBJT rate	APACS 5.2&6.2	FCS	Business Objects
19	Serious acquisitive crime breakdown			Business Objects
20	Gun and knife crime	APACS5.5&5.6		Business Objects
20	Serious sexual crime OBJT rate	APACS 6.4		Criminal Justice Department
20	Murder offences incl domestic murders	APACS5.4	FCS	Business Objects
20	FIU1 submission levels		FCS	Force Intelligence
20	PPO convictions	APACS 10.1	FCS	Criminal Justice Department
20	Class A drugs sanction detections		FCS	Business Objects
20	Drug seizures			Performance Review Team
20	Organised Crime Groups		FCS	7 OCU performance team

Protecting our communities

21	Domestic violence and abuse arrest & NFA rates		FCS	Business Objects
21	Repeat incidents of domestic violence cases reviewed at MARAC	APACS14.1		Special Investigations Department
21	Hate crime detection rate		FCS	Business Objects
22	Road traffic casualties	APACS 9.1	FCS	8 OCU performance team
23	Road traffic offences			8 OCU performance team

Making the most of our resources

24	Police officer sickness	APACS 13.1	FCS	PRT - Delphi + Personnel - Staffing Figures
24	Police staff sickness	APACS 13.2		PRT - Delphi + Personnel - Staffing Figures
25	Overdue PDRs			Personnel
26	Budget spend	APACS12.1	FCS	Finance
26	Efficiency savings		FCS	Finance
26	Specialist support to TO			7 and 8 OCU performance teams

Equipping our team to deliver

27	Financial awareness training		FCS	Training Department
27	Preparing for frontline supervision		FCS	Training Department
27	Mobile data			Not yet available
27	Minority ethnic officer recruitment	APACS 3.1		Personnel
27	Female officer representation	APACS 3.2		Personnel

Year to date performance targets matrix

	Target	Actual	Central	Isle of Wight	North & East	Portsmouth	Southampton	Western
Providing an excellent service								
Confidence in local police	>51.3%	48.5%	This is a Force measure					
Overall satisfaction (data for rolling 12 months)	>65.0%	66.0%	68.0%	69.0%	64.0%	66.0%	61.0%	67.0%
An active presence in every neighbourhood								
Rowdy & nuisance behaviour	44035	41515	8004	2696	7134	7051	9592	7038
	OCU specific targets		8150	3136	8498	6713	10365	7174
Vehicle nuisance / inappropriate vehicle use	8778	6806	1625	505	1399	658	1291	1328
	OCU specific targets		2041	587	1784	756	1659	1951
Reduce criminal damage	20072	18309	4124	1317	3595	2343	3693	3237
	OCU specific targets		4425	1471	3857	2721	3890	3708
Catching criminals & managing offenders								
All crime	95294	88761	18861	6007	16715	14109	17604	15465
	OCU specific targets		19419	6213	18042	14854	19988	16779
All crime SD	>25%	26.3%	24.4%	30.5%	27.1%	27.2%	26.5%	25.3%
	OCU specific targets		25.0%	30.0%	25.5%	25.5%	25.0%	25.0%
Serious violent crime	532	544	92	45	92	85	156	74
	OCU specific targets		101	37	84	107	138	65
Serious violent crime SD	>50%	54.6%	65.2%	51.1%	63.0%	48.2%	44.9%	60.8%
	OCU specific targets		57.0%	60.0%	56.0%	41.0%	45.0%	50.0%
Assault with less serious injury	8087	8531	1755	572	1396	1549	1933	1326
	OCU specific targets		1701	569	1433	1169	1906	1309
Serious sexual offences (OBTJ)	Data being developed		This is a Force measure					
Serious acquisitive crime	13131	11062	2263	491	2150	1913	2143	2102
	OCU specific targets		2399	538	2574	2311	2867	2442
Serious acquisitive crime SD	>15%	12.3%	10.4%	14.3%	13.0%	13.9%	12.0%	11.8%
Class A drugs SD	>235	208	15	11	32	28	54	68
	OCU specific targets		29.3	23.5	46.9	46.9	58.6	29.3
Organised crime group (OCG) - disruptions	>15	29	Owned by Crime OCU					

Year to date performance targets matrix

	Target	Actual	Central	Isle of Wight	North & East	Portsmouth	Southampton	Western
Protecting our communities								
Domestic crimes arrest rate	>80%	77.6%	74.5%	75.1%	80.0%	81.0%	79.7%	74.3%
Hate crime SD	>45%	47.5%	48.7%	46.4%	50.8%	48.1%	48.0%	39.8%
Road traffic casualties	<445	464	Owned by Operations OCU					
Making the most of our resources								
Police officer sickness *	<4.4		No data available for October profile					
Police staff sickness *	<4.4		No data available for October profile					
Budget spend	<50%	47%	49%	47%	49%	48%	50%	47%
Efficiency savings 2008-2011 (£m)	33	25.4	This is a Force measure					
Equipping our staff to deliver								
Financial awareness training			Data not suitable for matrix					
Preparing for frontline supervision			Data not suitable for matrix					
Mobile data			Data not suitable for matrix					
Force Total - targets achieved	12		10	9	11	11	8	10

Notes to be read in conjunction with matrices

All citizen focus data

OBTJ

Road traffic casualties

Budget spend

Efficiency savings

SD

Sickness data

OCU specific targets

Based on "completely or very satisfied"

Offenders Brought To Justice - current data is to

August 2009

All data until

30/09/2009

Data is always one month in arrears

For information on this target see page 25 of this Profile

Sanction detections

Force Actual = total for ALL officers/police staff - including those not in OCU

OCU specific targets are rounded to 2 decimal places; the actual figure may therefore seem the same but appear red due to this rounding

Monthly performance targets matrix

This matrix is based on monthly data compared to Force targets

	Target	Actual	Central	Isle of Wight	North & East	Portsmouth	Southampton	Western
An active presence in every neighbourhood								
Rowdy & nuisance	6379	5402	1067	338	909	938	1270	880
	OCU specific targets		1181	454	1231	972	1502	1039
Vehicle nuisance / inappropriate vehicle use	1272	774	168	48	168	76	138	176
	OCU specific targets		296	85	258	110	240	283
Reduce criminal damage	2908	2447	534	183	432	306	514	478
	OCU specific targets		641	213	559	394	563	537
Catching criminals & managing offenders								
All crime	13804	12267	2579	693	2310	2005	2507	2173
	OCU specific targets		2813	900	2614	2152	2895	2431
All crime (SD)	25.0%	26.2%	23.1%	28.7%	27.6%	29.2%	25.7%	25.3%
	OCU specific targets		25.0%	30.0%	25.5%	25.5%	25.0%	25.0%
Serious violent crime	77	74	15	7	17	15	11	9
	OCU specific targets		14.6	5.3	12.2	15.5	19.9	9.5
Serious violent crime SD	>50%	62.2%	60.0%	14.3%	58.8%	46.7%	109.1%	77.8%
	OCU specific targets		57.0%	60.0%	56.0%	41.0%	45.0%	50.0%
Assault with less serious injury	1172	1173	258	57	160	230	283	185
	OCU specific targets		246	82	208	169	276	190
Serious acquisitive crime	1902	1502	293	69	289	272	305	274
	OCU specific targets		347	78	373	335	415	354
Serious acquisitive crime SD	>15%	10.7%	9.6%	7.2%	12.1%	10.7%	10.5%	11.3%
Serious sexual offences (OBTJ)	Data being developed		This is a Force measure					
Class A drugs SD	>34	31	1	3	3	6	16	2
Protecting our communities								
Domestic crimes arrest rate	>80%	73.8%	64.8%	74.0%	83.5%	81.7%	75.9%	67.5%
Hate crime SD	>45%	46.0%	46.4%	0.0%	54.8%	54.2%	42.9%	42.3%
Making the most of our resources								
Police officer sickness	<0.625		No data available for October profile					
Police staff sickness	<0.625		No data available for October profile					
Force Total - targets achieved	9		7	6	10	11	9	9

Hampshire Constabulary Policing Pledge Scorecard

Pledge

YTD
2009/2010

Percentage of respondents tending to 'agree' or 'strongly agree' that: 'The police and local council are dealing with the anti-social behaviour and crime issues that matter in this area'

48.5%

Pledge 1 - Treat people fairly with dignity and respect, ensuring they have fair access to our service:

Percentage of respondents answering 'strongly agree' or 'tend to agree' when asked 'The police in this area treat everyone fairly regardless of who they are'

67.4%

Pledge 2 - Help promote our dedicated Safer Neighbourhoods Teams to the local community, including where they contact them and how to work with them

Measure under development - dip sampling of media/communications to be carried out

Pledge 3 - Ensure we are visible in our neighbourhoods at times when we will be most effective and when communities need us most. Safer Neighbourhoods teams will spend at least 80% of their time visibly working in neighbourhoods, tackling the most pressing priorities

Safer Neighbourhood Team abstractions

See

Safer Neighbourhood Team vacancy rate

In p

Pledge 4 - Respond to every message directed to every Safer Neighbourhood Team within 24 hours and, where necessary, provide a more detailed response as soon as we can

Measure under development - dip sampling of media/communications to be carried out

Pledge 5 - Aim to answer 999 calls within 10 seconds, deploy to emergencies immediately and give an estimated time to provide assistance to callers as safely and quickly as possible, aiming to get to them within 15 minutes

No. of 999 calls

157,360

%age of 999 calls answered within 10 seconds

93.1%

%age of Grade 1 calls attended within 15 minutes

90.0%

Pledge 6 - Answer all non emergency calls promptly. If attendance is needed, agree with the caller an acceptable time to attend

No of non emergency calls

473,309

%age of non emergency calls answered within 10 seconds

89.0%

Scheduling pilot permanent reporting in progress

In p

Pledge 7 - Create opportunities to meet them at least once a month to agree or update neighbourhood priorities. Arrange arrangements for meetings, street briefings, mobile police station visits and similar by keeping beat web pages up to date and online postcode search to our communities so that they can be kept up to date

Measure under development - dip sampling of media/communications to be carried out

Pledge 8 - Provide monthly updates on what action we and our partners are taking to make neighbourhoods safer and how the force is performing

Regular neighbourhood performance data is published on the Internet

5 times

Measure under development - other monitoring to be carried out

Pledge 9 - Agree with victims of crime how often they would like to be kept informed of progress in their case and for how long. Victims have the right to be kept informed at least every month if they wish and for as long as is reasonable

Satisfaction of victims with respect to being kept informed (very / fairly satisfied)

56.0%

% where the victim has been updated on a monthly basis

97.0%

Compliance with victims contact as part of the Victims' Code

See

Pledge 10 - Acknowledge any dissatisfaction with the service brought to our attention within 24 hours of it being reported and ensure that appropriate steps are taken to resolve concerns

Reports of incivility

105

British Crime Survey Confidence Data

SPI 2.2 Force Target

This data is updated by iQuanta approximately every quarter

National Public Confidence Measure

Jun-09

Hampshire	48.5%
MSG Position	5 of 8
MSG average	49.5%

This data is based on 'The police and local council are dealing with the anti-social behaviour and crime issues that matter in this area'
 The Home Office has set a target to achieve a 12% improvement by 2012 against the baseline of 47.3%
 This year's required improvement is 4%

Local Confidence Survey Data

Figures relate to the percentage of respondents who agree or strongly agree with the question.
 Hampshire's local surveys have a confidence level of +/-4%. This means that changes of less than 4% may not reflect a real change in performance.

The police and local council are dealing with the anti-social behaviour and crime issues that matter in this area

	Central	Isle of Wight	North & East	Portsmouth	Southampton	Western	Total	No. Surveys
January - March 2009	70%	67%	65%	64%	60%	65%	65%	3594
April - June 2009	68%	67%	68%	61%	59%	67%	65%	3591
July - September 2009	63%	66%	64%	65%	61%	67%	64%	8128



The police are dealing with the things that matter locally

	Central	Isle of Wight	North & East	Portsmouth	Southampton	Western	Total	No. Surveys
April - June 2009	71%	69%	66%	63%	65%	70%	67%	3591
July - September 2009	67%	68%	67%	64%	62%	66%	66%	8128



Overall satisfaction (user satisfaction survey results)

SPI 1.1 Force Target

Rolling 12 months data relates to: Nov 08 - Oct 09; rolling 3 months data relates to Aug 09 - Oct 09
 Overall satisfaction includes burglary, vehicle crime, violent crime and minor injury RTCs

Target 65%	Central	Isle of Wight	North & East	Portsmouth	Southampton	Western	Total	No. Surveys
Rolling 12 months	68%	69%	64%	66%	61%	67%	66%	8216
Rolling 3 months	69%	64%	68%	66%	63%	71%	67%	2374

Being kept informed (user satisfaction survey results)

Rolling 12 months data relates to: Nov 08 - Oct 09; rolling 3 months data relates to Aug 09 - Oct 09
 Being kept informed includes burglary, vehicle crime, violent crime and minor injury RTCs

	Central	Isle of Wight	North & East	Portsmouth	Southampton	Western	Total	No. Surveys
Rolling 12 months	59%	60%	54%	55%	52%	58%	56%	7949
Rolling 3 months	60%	55%	57%	57%	52%	59%	57%	2307

Providing an excellent service

Comparative satisfaction of minority ethnic groups

SPI 1.3

Data relates to interviews which took place Aug 09 - Oct 09

These figures are for overall satisfaction for burglary, vehicle crime, violent crime, minor injury RTCs and racist incidents

	Completely and very satisfied	Completely, very and fairly satisfied
White	66.1%	84.1%
Minority Ethnic	53.7%	78.6%

Satisfaction of victims of racist incidents

SPI 1.2

These figures relate to interviews which took place Oct 08 - Sep 09; these will be updated quarterly

Racist incident overall satisfaction = % completely or very satisfied

	Central	Isle of Wight	North & East	Portsmouth	Southampton	Western	Total
%	67%	33%	56%	63%	54%	52%	58%
Number of surveys	27	3	34	40	52	21	177

MSG information for user satisfaction

iQuanta data for MSG for the 12 months up to June 09 (iQuanta calculate satisfaction % based on those responding that they are completely, very or fairly satisfied)

	Previous MSG position	Current MSG position	Change		Previous MSG position	Current MSG position	Change
<u>Vehicle crime</u>				<u>Burglary</u>			
Ease of contact	2/8	2/8	↔	Ease of contact	2/8	3/8	↓
Actions taken	4/8	4/8	↔	Actions taken	3/8	4/8	↓
Follow up	4/8	4/8	↔	Follow up	1/8	1/8	↔
Treatment	4/8	6/8	↓	Treatment	3/8	3/8	↔
OVERALL	4/8	4/8	↔	OVERALL	2/8	2/8	↔

Violent crime

	Previous MSG position	Current MSG position	Change		Previous MSG position	Current MSG position	Change
Ease of contact	2/8	2/8	↔	<u>RTC (minor injury)</u>			
Actions taken	1/8	2/8	↓	Ease of contact	1/8	4/8	↓
Follow up	5/8	6/8	↓	Actions taken	2/8	1/8	↑
Treatment	2/8	3/8	↓	Follow up	4/8	4/8	↔
OVERALL	2/8	3/8	↓	Treatment	2/8	3/8	↓
				OVERALL	2/8	3/8	↓

All users (excluding racist incidents)

	Previous MSG position	Current MSG position	Change
Ease of contact	4/8	1/8	↑
Actions taken	2/8	4/8	↓
Follow up	3/8	3/8	↔
Treatment	2/8	3/8	↓
OVERALL	2/8	3/8	↓

Responding to victims of crime

Pledge Point 9

Summary results of Dip-sample Victim Code Compliance checks

(latest month for available data followed by YTD)

% where victim was informed within 5 days of an investigation being closed

	Central	Isle of Wight	North & East	Portsmouth	Southampton	Western	Crime	Total
September 2009	100%	100%	100%	100%	100%	100%	100%	100%
YTD	100%	100%	100%	99%	100%	99%	100%	99%

% where the victim has been updated on a monthly basis (if applicable)

	Central	Isle of Wight	North & East	Portsmouth	Southampton	Western	Crime	Total
September 2009	100%	95%	100%	100%	100%	100%	100%	99%
YTD	99%	93%	90%	99%	100%	100%	100%	97%

% where the victim was notified upon filing (if applicable)

	Central	Isle of Wight	North & East	Portsmouth	Southampton	Western	Crime	Total
September 2009	100%	100%	100%	100%	100%	100%	100%	100%
YTD	97%	98%	94%	99%	100%	99%	100%	98%

Note: Victim Code Compliance data is published one month in arrears

Note: Absence of data for Operations OCU - the only crime investigations that are retained for resolution by 8 OCU officers are public order or drug offences where the victim is 'The State'. Other crimes are transferred to 'TO' OCU's for any further investigation required. Road traffic collisions resulting in death could be included but this is a small sample. The option to dip-sample other RTCs (minor and serious injury) for contact with injured or aggrieved parties could be used but these are not within the requirements of the Victims' Code. This would only include RPU in the sample and not other 8 OCU teams

Providing an excellent service

Victim support status for crimes

YTD to October 2009	Central	Isle of Wight	North & East	Portsmouth	Southampton	Western	Total	Total %
Victim informed of VSS accepted	1771	457	1707	1269	2400	1578	9182	10.35%
Victim informed of VSS declined	12149	3560	10492	8184	11049	9361	54795	61.76%
VSS aware	509	121	314	171	190	733	2038	2.30%
Victimless crime	4392	1811	4032	4100	3751	3774	21860	24.64%
Not stated	14	68	151	384	209	15	841	0.95%
Total crimes	18835	6017	16696	14108	17599	15461	88716	N/A
% referred	12.11%	9.61%	12.10%	10.21%	14.72%	14.95%	12.65%	N/A

Month of October 2009	Central	Isle of Wight	North & East	Portsmouth	Southampton	Western	Total	Total %
Victim informed of VSS accepted	245	63	223	193	320	248	1292	10.56%
Victim informed of VSS declined	1647	451	1364	1123	1598	1277	7460	60.99%
VSS aware	34	3	35	20	23	66	181	1.48%
Victimless crime	637	162	584	569	489	569	3010	24.61%
Not stated	1	14	90	99	74	11	289	2.36%
Total crimes	2564	693	2296	2004	2504	2171	12232	N/A
% referred	10.88%	9.52%	11.24%	10.63%	13.70%	14.46%	12.04%	N/A

Letters of appreciation

	Central	Isle of Wight	North & East	Portsmouth	Southampton	Western	Crime	Operations	Other	Total
April 2009	9	5	13	27	0	5	5	13	11	88
May 2009	10	11	13	0	3	11	2	6	31	87
June 2009	9	13	12	3	7	11	15	3	19	92
July 2009	21	7	24	10	3	7	11	0	0	83
August 2009	21	11	13	6	4	11	13	41	3	123
September 2009	19	9	8	10	1	7	17	6	6	83
Total	89	56	83	56	18	52	63	69	70	556

Note: These figures are published one month in arrears

Reports of incivility

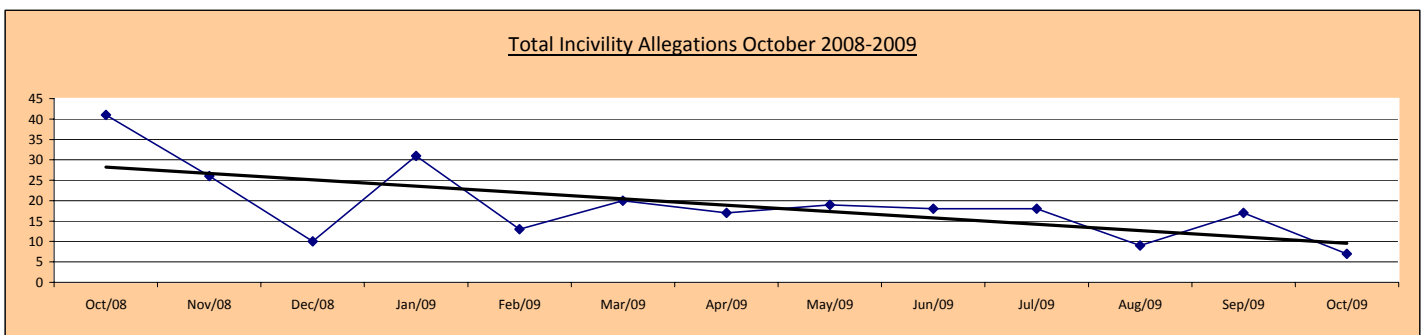
Pledge Point 10

	Central	Isle of Wight	North & East	Portsmouth	Southampton	Western	Crime	Operations	Other	Total
April 2009	2	3	1	3	0	2	0	6	0	17
May 2009	2	4	5	1	2	3	0	1	1	19
June 2009	7	2	1	0	0	3	1	4	0	18
July 2009	1	2	1	3	1	2	3	5	0	18
August 2009	0	1	1	0	4	0	3	0	0	9
September 2009	0	1	2	7	3	1	2	1	0	17
October 2009	1	0	1	0	3	0	0	1	1	7
Total	13	13	12	14	13	11	9	18	2	105

NOTE: OCU complaints totals may include complaints regarding officers who are serving within the area but are not located at that OCU

NOTE: Data/figures may change due to additional or new information and there may be multiple allegations per complaint

By month	Dec 08	Jan 09	Feb 09	Mar 09	Apr 09	May 09	Jun 09	Jul 09	Aug 09	Sep 09	Oct 09
Incivility	10	31	13	20	17	19	18	18	9	17	7



This graph shows the downward trend for the volume of incivility allegations. The "Linear (incivility)" shows the trajectory of this downward trend

Allegations and their resolutions

Data for October 2009

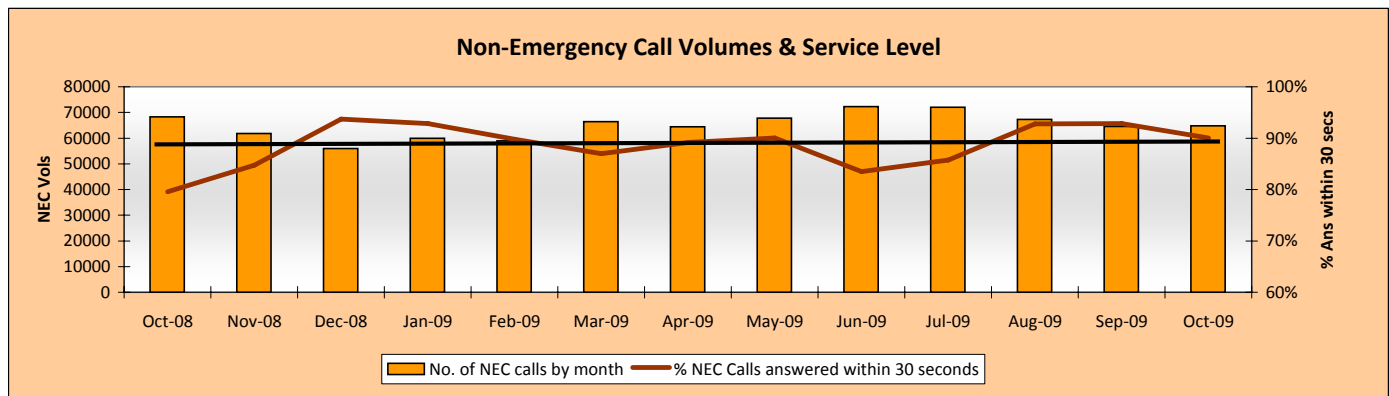
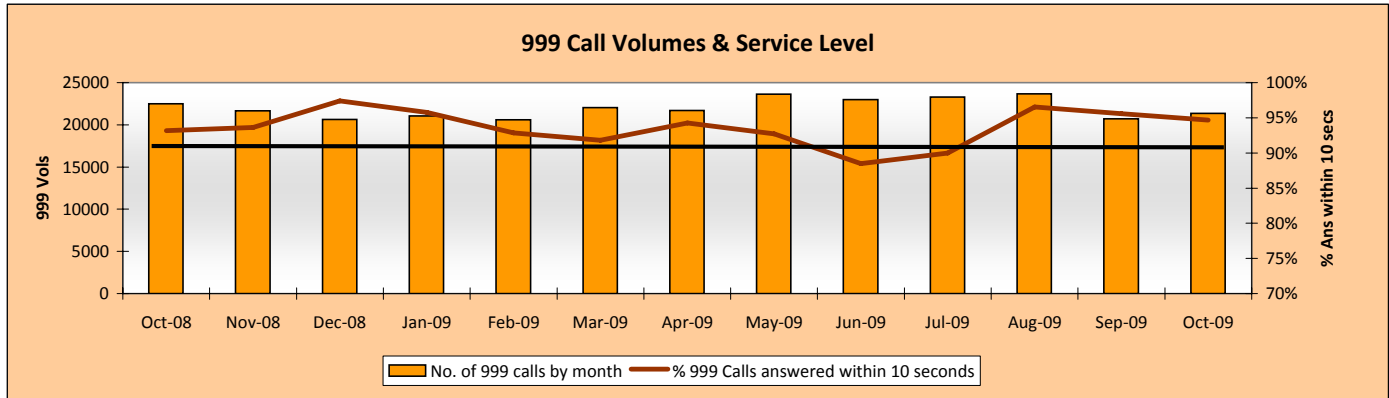
Locally resolved by OCU	67
Locally resolved by PSD	9
Withdrawn	0
Dispensed by IPCC	11
Unsubstantiated	38
Substantiated	3
Total	128

Providing an excellent service

Responding to public contact

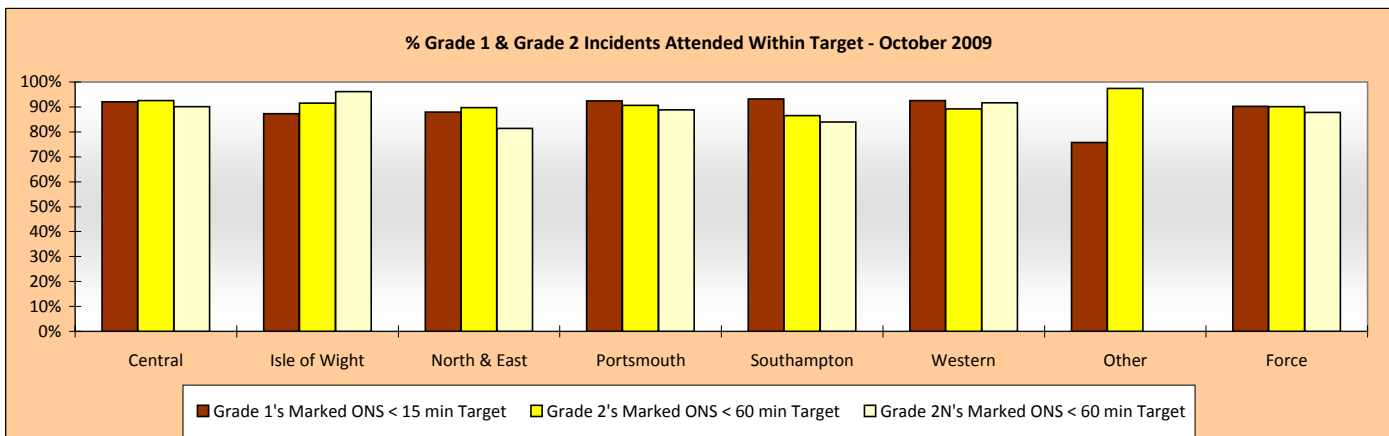
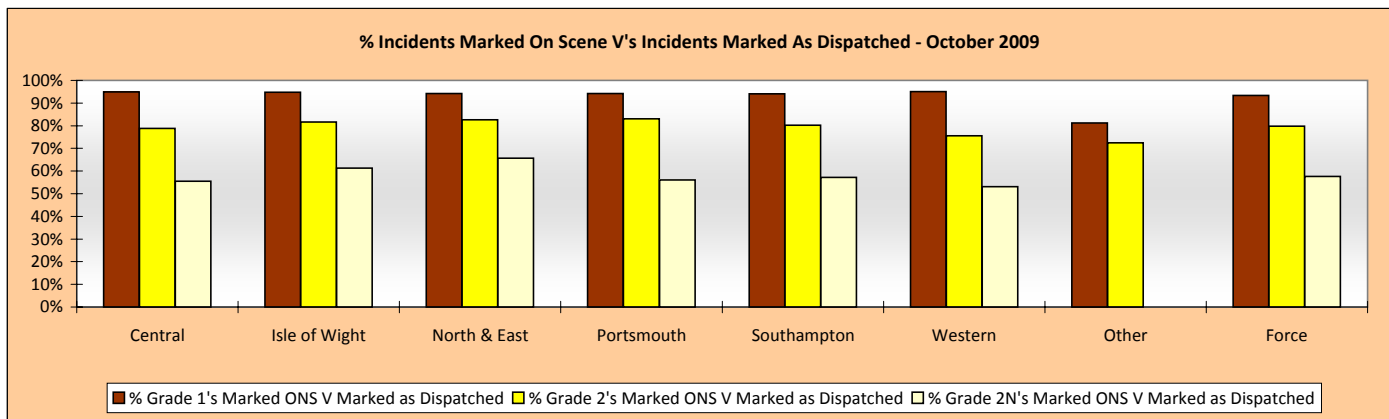
Pledge Points 5 & 6

Call Volumes: Target is to answer 90% of 999 calls within 10 seconds and 90% of Non-Emergency calls within 30 seconds



Officers Attended Within Target: This is the time from an incident being created to the 1st Officer being marked on scene on Altaris.

The % of Officers attending within target is based on the number of incidents marked on scene within target vs. the number of incidents marked on scene. If an incident is marked as having an officer dispatched, but is then subsequently not marked as On Scene, these incidents are excluded from the % Attendance.

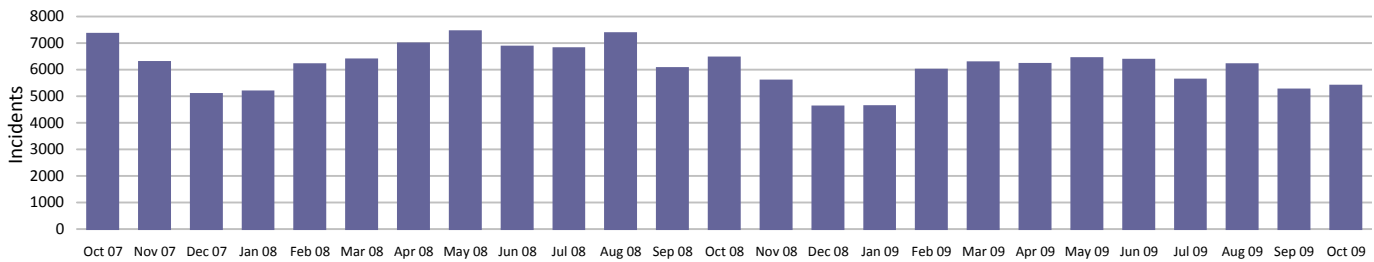


An active presence in every neighbourhood

Rowdy & nuisance behaviour

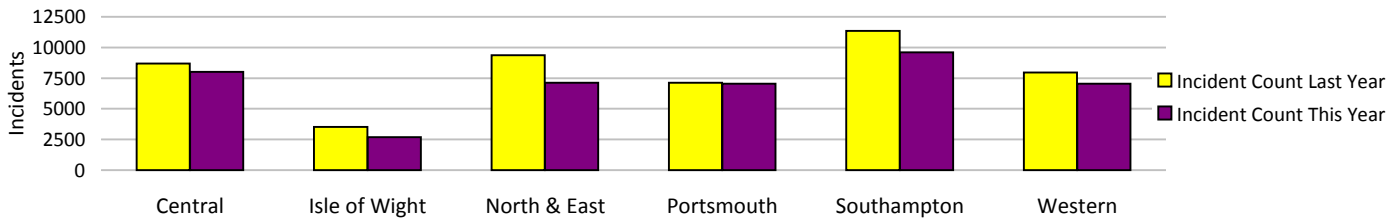
Force Target

This year the decision has been made to use RMS as the source of this data, as opposed to the NSIR return data (the figures published in the 2008/2009 Force Performance Summary used the NSIR data)



Incidents	Central	Isle of Wight	North & East	Portsmouth	Southampton	Western	Total
YTD Incidents	8004	2696	7134	7051	9592	7038	41515
YTD Target	8150	3136	8498	6713	10365	7174	44035
YTD 08/09 Incidents	8686	3525	9380	7113	11342	7957	48003
This month	1067	338	909	938	1270	880	5402
% change from 08/09	-7.85%	-23.52%	-23.94%	-0.87%	-15.43%	-11.55%	-13.52%

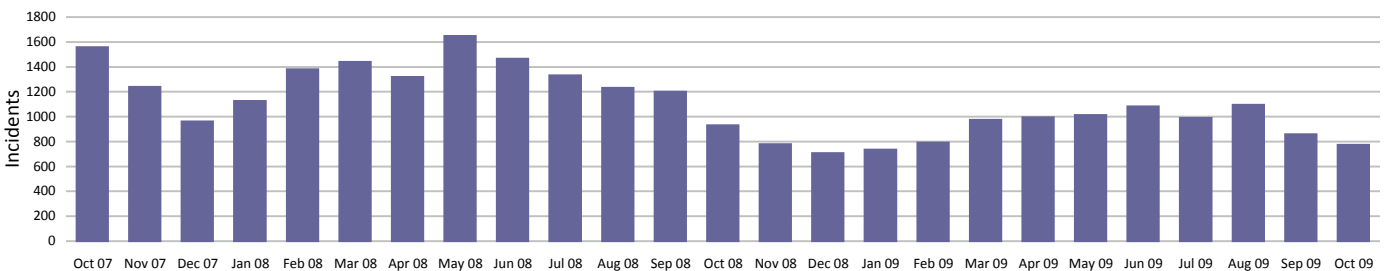
Rowdy & nuisance behaviour relates to occurrence types: Inappropriate use of Fireworks, Rowdy & Inconsiderate, Substance Misuse and Street Drinking



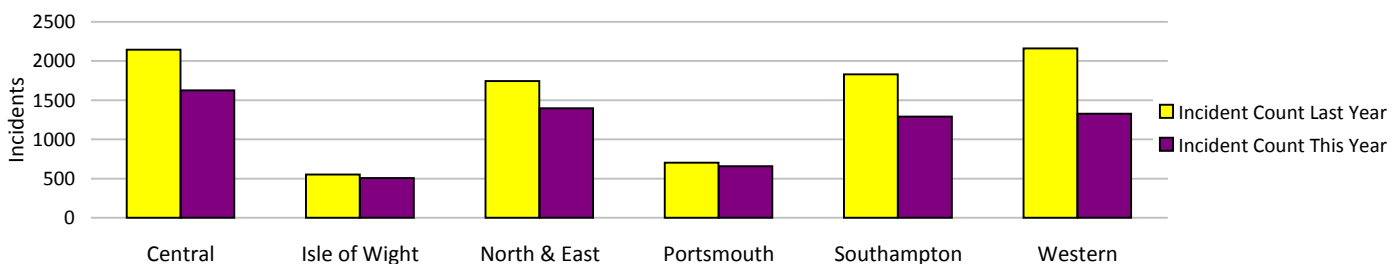
Vehicle nuisance/inappropriate vehicle use

Force Target

This year the decision has been made to use RMS as the source of this data, as opposed to the NSIR return data (the figures published in the 2008/2009 Force Performance Summary used the NSIR data)



Incidents	Central	Isle of Wight	North & East	Portsmouth	Southampton	Western	Total
YTD Incidents	1625	505	1399	658	1291	1328	6806
YTD Target	2041	587	1784	756	1659	1951	8778
YTD 08/09 Incidents	2143	551	1744	704	1830	2160	9132
This month	168	48	168	76	138	176	774
% change from 08/09	-24.17%	-8.35%	-19.78%	-6.53%	-29.45%	-38.52%	-25.47%



Note: MSG data is always published a month in arrears.

For an explanation of this data, refer to the Summary on page 2

October 2009

An active presence in every neighbourhood

Safer Neighbourhood Teams (SNT)

Policing pledge 3

Abstractions	Central	Isle of Wight	North & East	Portsmouth	Southampton	Western	Total
April 2009	3.02%	2.32%	3.16%	3.80%	1.63%	3.30%	
May 2009	3.33%	2.95%	2.98%	3.01%	1.88%	2.83%	2.86%
June 2009	3.16%	1.15%	2.54%	4.62%	2.77%	3.40%	3.05%
July 2009	3.44%	2.32%	4.02%	4.92%	3.24%	6.46%	4.16%
August 2009	6.66%	16.17%	11.25%	3.13%	2.08%	3.37%	6.40%
September 2009	3.99%	4.03%	4.41%	1.00%	3.16%	3.64%	3.48%
October 2009	2.74%	1.10%	4.80%	0.86%	1.43%	2.19%	2.44%

Target = NPT visible & accessible at least 80% of time (maximum 5% abstractions)

In August 2009 a review of Abstraction data was undertaken to ensure a consistent approach was used across the Force. Prior to this date individual OCUs used slightly differing methodology therefore it is not possible to compare the data for April - July with data from August onwards, or to compare the data for individual OCU's with one another prior to August.

Community engagement data

Anticipated initially for July, there have been difficulties in obtaining the data which should now be available from the autumn. The Performance Review Team has contacted the owner to establish a timescale for the provision of this information.

Safer Neighbourhood Team Personnel

	Inspector	Segeant	Constable	PCSO	Total
Central	10	24	90	78	202
IOW	2	8	33	27	70
North and East	11	16	76	66	169
Portsmouth	4	14	50	50	118
Southampton	6	13	61	59	139
Western	7	19	81	62	169
Total	40	94	391	342	867

SNT strength by OCU - Police

	Central	Isle of Wight	North & East	Portsmouth	Southampton	Western
Strength	116.2	40.6	99.2	66.01	77.9	103.22

SNT establishment and strength by OCU - PCSOs

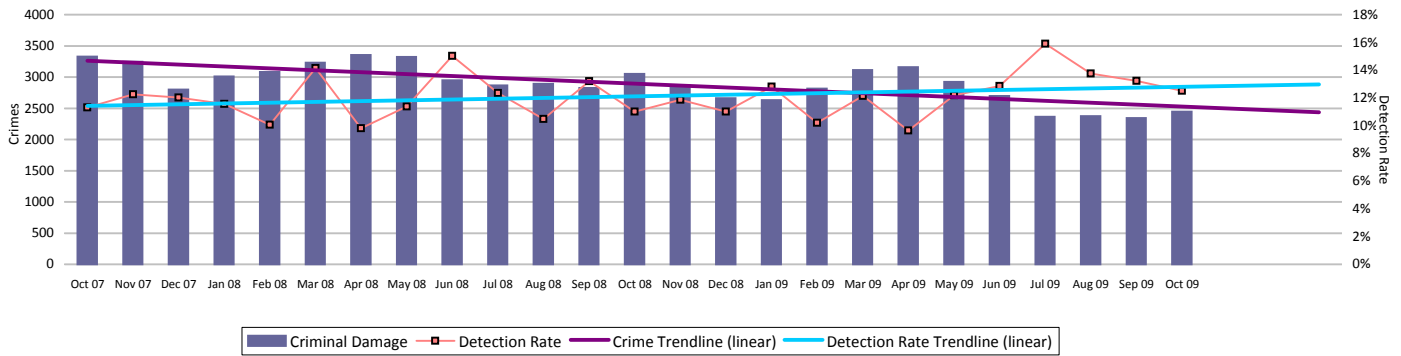
	Central	Isle of Wight	North & East	Portsmouth	Southampton	Western
Establishment	74	28	67	50	59	59
Strength	78	26.09	65.4	49.12	58.35	60.72
Vacancies	-4	1.91	1.6	0.88	0.65	-1.72

Note: Personnel Planning are no longer able to provide 'length of service' information due to the implementation of the new organisation structure into Delphi. This has meant that all Staff and Police Officers have a position start date of 8 July 2009

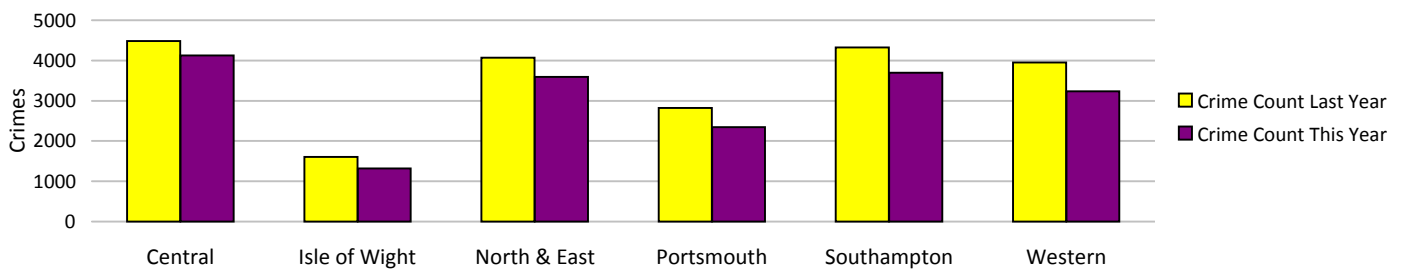
An active presence in every neighbourhood

Criminal damage

Force Target

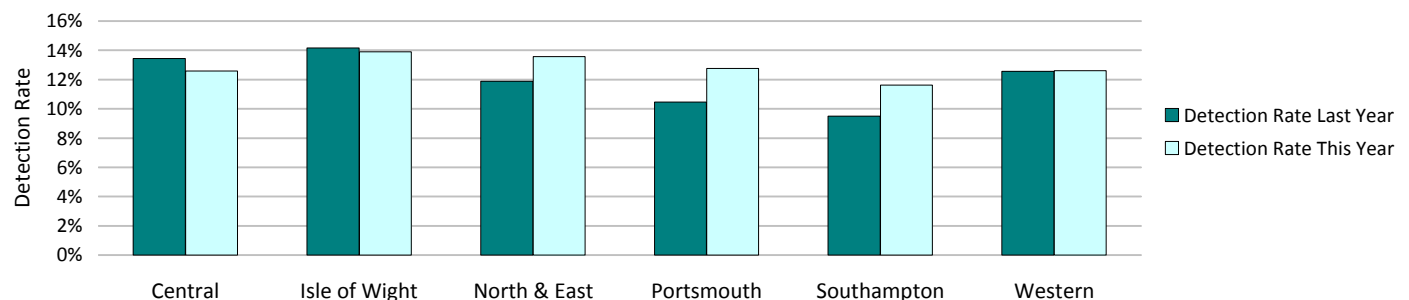


Crimes	Central	Isle of Wight	North & East	Portsmouth	Southampton	Western	Total
YTD Crimes	4124	1317	3595	2343	3693	3237	18309
YTD Target	4425	1471	3857	2721	3890	3708	20072
YTD 08/09 Crimes	4482	1609	4073	2821	4327	3950	21262
This month	534	183	432	306	514	478	2447
% change from 08/09	-7.99%	-18.15%	-11.74%	-16.94%	-14.65%	-18.05%	-13.89%
MSG position	13 of 15	9 of 15	13 of 15	11 of 15	14 of 15	6 of 15	8 of 8
OCU actual	3.51	3.76	3.27	4.72	6.05	3.10	3.83
MSG average	3.20	3.76	3.04	4.26	4.79	3.22	3.49



Detections	Central	Isle of Wight	North & East	Portsmouth	Southampton	Western	Total
YTD Detection Rate	12.58%	13.90%	13.57%	12.76%	11.62%	12.60%	12.70%
This month	10.67%	11.48%	12.73%	15.36%	12.26%	13.18%	12.51%
YTD 08/09 Detections	13.43%	14.17%	11.88%	10.46%	9.50%	12.56%	11.83%
MSG position	9 of 15	8 of 15	10 of 15	5 of 15	10 of 15	11 of 15	7 of 8
OCU actual	12.44%	14.00%	12.62%	11.81%	10.70%	12.02%	12.07%
MSG average	13.34%	14.60%	14.30%	11.46%	11.92%	13.76%	14.27%

Note: Detections refer to Sanction Detections ONLY



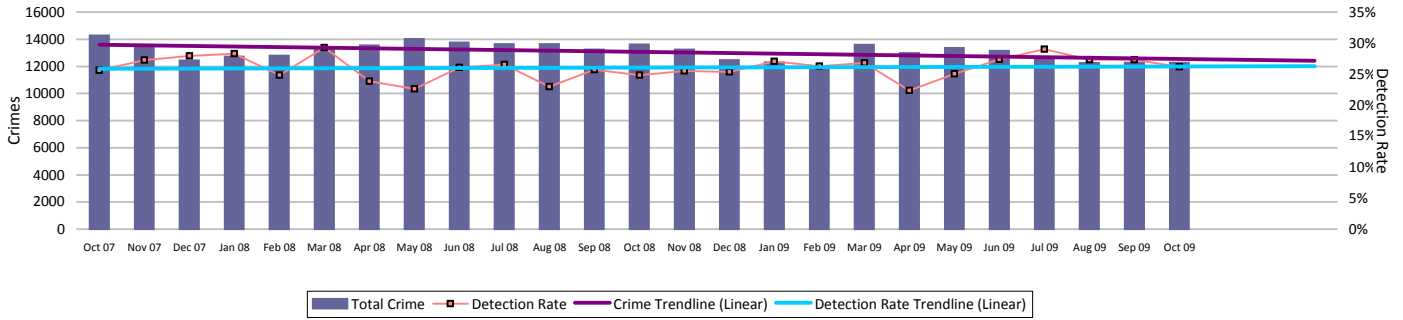
Note: MSG data is always published a month in arrears.
For an explanation of this data, refer to the Summary on page 2

October 2009

Catching criminals and managing offenders

All crime

Force Target



Crimes	Central	Isle of Wight	North & East	Portsmouth	Southampton	Western	Total
YTD Crimes	18861	6007	16715	14109	17604	15465	88761
YTD Target	19419	6213	18042	14854	19988	16779	95294
YTD 08/09 Crimes	19285	6608	18070	14643	19688	17175	95469
This month	2579	693	2310	2005	2507	2173	12267
% change from 08/09	-2.20%	-9.10%	-7.50%	-3.65%	-10.59%	-9.96%	-7.03%
MSG position	13 of 15	11 of 15	10 of 15	13 of 15	13 of 15	6 of 15	6 of 8
OCU actual	17.82	19.13	16.09	29.42	30.89	15.64	19.90
MSG average	16.22	17.22	15.61	23.73	26.10	15.61	18.27



Detections	Central	Isle of Wight	North & East	Portsmouth	Southampton	Western	Total
YTD Detection Rate	24.39%	30.51%	27.09%	27.23%	26.46%	25.30%	26.33%
This month	23.11%	28.72%	27.62%	29.18%	25.69%	25.31%	26.18%
YTD 08/09 Detections	23.74%	32.28%	25.48%	25.51%	23.49%	22.45%	24.65%
Detection Targets	25.00%	30.00%	25.50%	25.50%	25.00%	25.00%	25.00%
MSG position	11 of 15	5 of 15	10 of 15	6 of 15	10 of 15	12 of 15	7 of 8
OCU actual	24.45%	33.07%	26.49%	26.27%	25.65%	25.41%	26.09%
MSG average	27.48%	30.51%	28.66%	25.39%	26.26%	26.95%	28.78%

Note: Detections refer to Sanction Detections ONLY

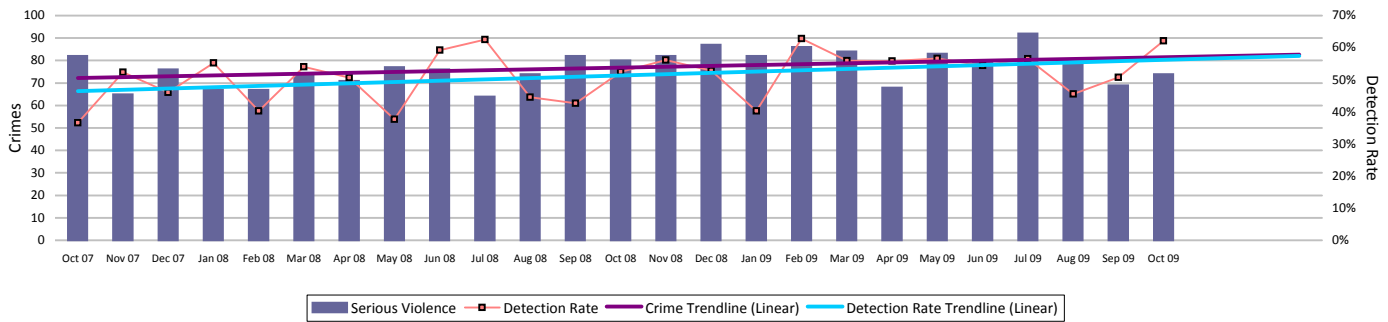


Catching criminals and managing offenders

Serious violent crime

SPI 5.1 Force Target

Serious violent crime consists of crimsec codes 1, 2, 4.1-4.4, 4.6, 4.8, 5A, 5B, 5C, 8F, 8H and 37.1



Crimes	Central	Isle of Wight	North & East	Portsmouth	Southampton	Western	Total
YTD Crimes	92	45	92	85	156	74	544
YTD Target	101	37	84	107	138	65	532
YTD 08/09 Crimes	112	35	69	86	141	81	524
This month	15	7	17	15	11	9	74
% change from 08/09	-17.86%	28.57%	33.33%	-1.16%	10.64%	-8.64%	3.82%
MSG position	9 of 15	9 of 15	10 of 15	2 of 15	7 of 15	9 of 15	5 of 8
OCU actual	0.09	0.16	0.09	0.16	0.28	0.07	0.12
MSG average	0.10	0.14	0.08	0.30	0.32	0.09	0.12



Detections	Central	Isle of Wight	North & East	Portsmouth	Southampton	Western	Total
YTD Detection Rate	65.22%	51.11%	63.04%	48.24%	44.87%	60.81%	54.60%
This month	60.00%	14.29%	58.82%	46.67%	109.09%	77.78%	62.16%
YTD 08/09 Detections	56.25%	77.14%	57.97%	41.86%	41.84%	43.21%	49.62%
Detection Targets	57.00%	60.00%	56.00%	41.00%	45.00%	50.00%	50.00%
MSG position	2 of 15	3 of 15	7 of 15	3 of 15	4 of 15	7 of 15	2 of 8
OCU actual	68.46%	62.32%	54.82%	44.27%	46.50%	55.49%	53.41%
MSG average	54.32%	51.82%	55.02%	39.03%	40.01%	57.35%	48.03%

Note: Detections refer to Sanction Detections ONLY



Serious Violent offences OBJ

SPI 6.1

Data to Aug. 2009

	Recorded Crime		Total OBJTs		Hampshire		Rolling Average	
	Month	RA	Month	RA	Month	RA	MSG	E&W
Attempted murder	2	13	0	3	0.0%	23.1%	16.8%	21.7%
Death by aggravated vehicle taking	0	0	0	0	0.0%	0.0%	0.0%	76.9%
Causing death by dangerous driving etc	1	11	1	15	100.0%	136.4%	81.2%	74.4%
Homicide and child destruction	4	21	0	18	0.0%	85.7%	123.5%	132.4%
Wounding and GBH without intent	72	961	15	222	20.8%	23.1%	23.3%	19.5%

	Convictions	Caution	TICs	Cannabis Warning	PNDs
	Rolling 12 month Average				
Attempted murder	3	0	0	0	0
Death by aggravated vehicle taking	0	0	0	0	0
Causing death by dangerous driving etc	15	0	0	0	0
Homicide and child destruction	18	0	0	0	0
Wounding and GBH without intent	216	6	0	0	0

RA = Rolling Annual
E&W = England & Wales

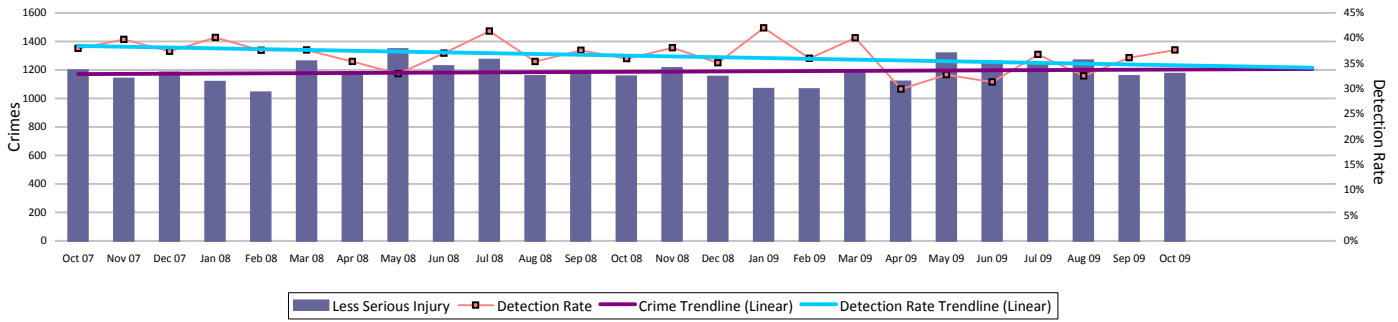
Note: MSG data is always published a month in arrears. For an explanation of this data, refer to the Summary on page 2

Catching criminals and managing offenders

Assault with less serious injury

SPI 5.3 Force Target

Assault with less serious injury consists of crimsec codes 8G and 8J

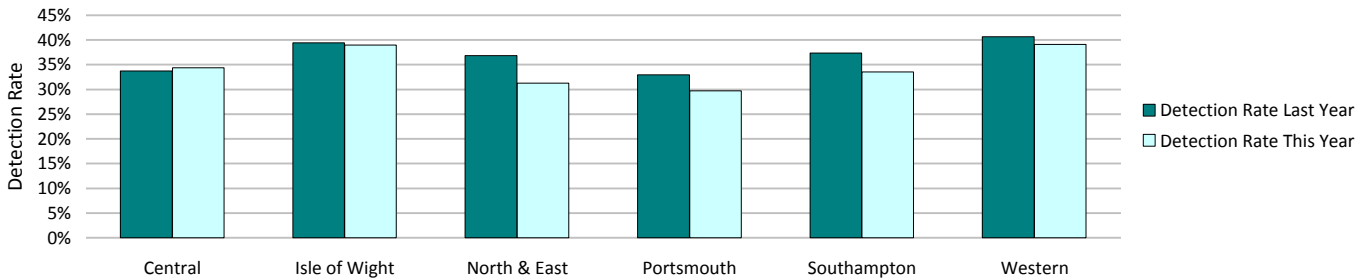


Crimes	Central	Isle of Wight	North & East	Portsmouth	Southampton	Western	Total
YTD Crimes	1755	572	1396	1549	1933	1326	8531
YTD Target	1701	569	1433	1169	1906	1309	8087
YTD 08/09 Crimes	1766	621	1465	1252	2078	1334	8516
This month	258	57	160	230	283	185	1173
% change from 08/09	-0.62%	-7.89%	-4.71%	23.72%	-6.98%	-0.60%	0.18%
MSG position	15 of 15	8 of 15	11 of 15	13 of 15	15 of 15	9 of 15	8 of 8
OCU actual	1.78	1.73	1.37	3.31	3.71	1.42	2.00
MSG average	1.33	1.71	1.24	2.18	2.39	1.40	1.55



Detections	Central	Isle of Wight	North & East	Portsmouth	Southampton	Western	Total
YTD Detection Rate	34.36%	38.99%	31.30%	29.70%	33.52%	39.14%	33.88%
This month	30.62%	40.35%	38.13%	39.13%	39.58%	41.62%	37.68%
YTD 08/09 Detections	33.75%	39.45%	36.86%	32.99%	37.34%	40.63%	36.54%
MSG position	14 of 15	9 of 15	12 of 15	15 of 15	6 of 15	4 of 15	6 of 8
OCU actual	34.49%	43.61%	34.54%	28.21%	38.96%	43.69%	36.45%
MSG average	40.49%	44.50%	41.50%	36.04%	35.40%	39.82%	41.95%

Note: Detections refer to Sanction Detections ONLY



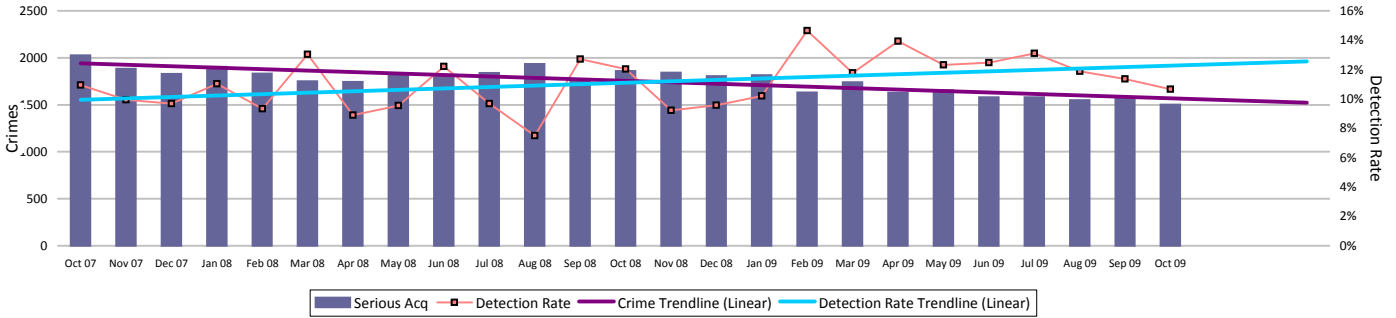
Note: MSG data is always published a month in arrears. For an explanation of this data, refer to the Summary on page 2

Catching criminals and managing offenders

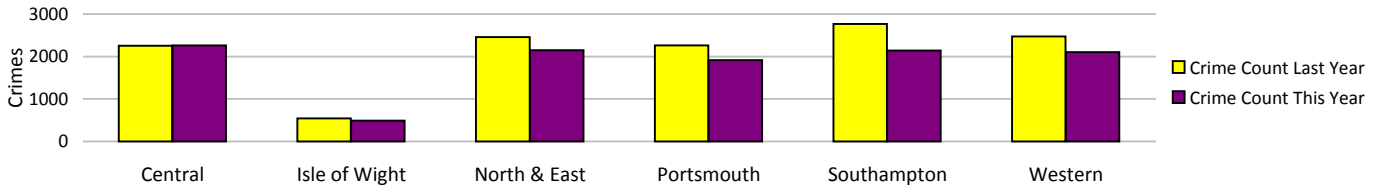
Serious acquisitive crime

SPI 5.2 Force Target

Serious acquisitive crime consists of crimsec codes 28, 29, 34A, 34B, 37/2, 45 and 48



Crimes	Central	Isle of Wight	North & East	Portsmouth	Southampton	Western	Total
YTD Crimes	2263	491	2150	1913	2143	2102	11062
YTD Target	2399	538	2574	2311	2867	2442	13131
YTD 08/09 Crimes	2255	544	2457	2258	2768	2471	12753
This month	293	69	289	272	305	274	1502
% change from 08/09	0.35%	-9.74%	-12.49%	-15.28%	-22.58%	-14.93%	-13.26%
MSG position	7 of 15	1 of 15	6 of 15	2 of 15	6 of 15	9 of 15	3 of 8
OCU actual	2.22	1.48	2.09	3.91	3.99	2.13	2.52
MSG average	2.55	2.29	2.39	4.73	4.71	2.19	2.96



Detections	Central	Isle of Wight	North & East	Portsmouth	Southampton	Western	Total
Target >15%							
YTD Detection Rate	10.38%	14.26%	12.98%	13.90%	12.04%	11.85%	12.27%
This month	9.56%	7.25%	12.11%	10.66%	10.49%	11.31%	10.65%
YTD 08/09 Detections	10.38%	14.34%	8.87%	12.62%	9.39%	9.87%	10.34%
MSG position	11 of 15	9 of 15	12 of 15	6 of 15	10 of 15	12 of 15	5 of 8
OCU actual	11.54%	14.08%	10.34%	13.99%	11.14%	11.72%	11.81%
MSG average	13.28%	15.55%	13.36%	12.10%	13.33%	13.63%	13.49%

Note: Detections refer to Sanction Detections ONLY



Serious Acquisitive offences OBTJ

SPI 6.2

Data to Aug. 2009

	Recorded Crime		Total OBTJs		Hampshire		Rolling Average	
	Month	RA	Month	RA	Month	RA	MSG	E&W
Aggravated burglary in a dwelling	2	43	0	7	0.0%	16.3%	20.5%	23.9%
Aggravated vehicle taking	24	248	21	195	87.5%	78.6%	76.8%	72.4%
Burglary in a dwelling	473	5791	49	997	10.4%	17.2%	15.1%	14.5%
Robbery	85	1147	8	229	9.4%	20.0%	22.3%	17.5%
Theft from a vehicle	750	10446	13	394	1.7%	3.8%	7.8%	8.6%
Theft of a motor vehicle	181	2764	18	320	9.9%	11.6%	12.9%	13.1%

	Convictions	Caution	TICs	Cannabis Warnings	PNDs
	Rolling 12 month Average				
Aggravated burglary in a dwelling	7	0	0	0	0
Aggravated vehicle taking	174	21	0	0	0
Burglary in a dwelling	521	33	443	0	0
Robbery	223	3	3	0	0
Theft from a vehicle	204	70	120	0	0
Theft of a motor vehicle	256	38	26	0	0

RA = Rolling Annual
E&W = England & Wales

Note: MSG data is always published a month in arrears. For an explanation of this data, refer to the Summary on page 2

Catching criminals and managing offenders

Serious acquisitive crime breakdown

Robbery

Year to date	Central	Isle of Wight	North & East	Portsmouth	Southampton	Western	Total
Crimes	59	15	96	137	227	82	616
08/09 crimes	62	10	93	134	266	95	660
% change from 08/09	-4.84%	50.00%	3.23%	2.24%	-14.66%	-13.68%	-6.67%
MSG position	4 of 15	6 of 15	6 of 15	2 of 15	8 of 15	9 of 15	4 of 8
Detection rate	49.15%	33.33%	26.04%	29.93%	20.70%	24.39%	27.11%
MSG position	1 of 15	8 of 15	13 of 15	6 of 15	10 of 15	7 of 15	4 of 8
October 2009	Central	Isle of Wight	North & East	Portsmouth	Southampton	Western	Total
Crimes	9	0	21	20	45	8	103
Detection rate	100.00%	N/A	14.29%	20.00%	15.56%	75.00%	28.16%

Dwelling burglary

Year to date	Central	Isle of Wight	North & East	Portsmouth	Southampton	Western	Total
Crimes	679	161	677	571	637	510	3235
08/09 crimes	615	190	757	779	553	573	3467
% change from 08/09	10.41%	-15.26%	-10.57%	-26.70%	15.19%	-10.99%	-6.69%
MSG position	5 of 15	3 of 15	8 of 15	7 of 15	5 of 15	3 of 15	2 of 8
Detection rate	15.76%	13.04%	16.25%	23.12%	18.21%	24.12%	18.83%
MSG position	3 of 15	8 of 15	12 of 15	1 of 15	8 of 15	5 of 15	4 of 8
October 2009	Central	Isle of Wight	North & East	Portsmouth	Southampton	Western	Total
Crimes	96	26	108	84	93	74	481
Detection rate	5.21%	7.69%	12.96%	11.90%	15.05%	18.92%	12.27%

Vehicle crime

Year to date	Central	Isle of Wight	North & East	Portsmouth	Southampton	Western	Total
Crimes	1525	315	1377	1205	1279	1510	7211
08/09 crimes	1578	344	1607	1345	1949	1803	8626
% change from 08/09	-3.36%	-8.43%	-14.31%	-10.41%	-34.38%	-16.25%	-16.40%
MSG position	6 of 15	1 of 15	5 of 15	7 of 15	5 of 15	12 of 15	3 of 8
Detection rate	6.49%	13.97%	10.46%	7.72%	7.43%	7.02%	8.06%
MSG position	13 of 15	9 of 15	10 of 15	10 of 15	10 of 15	13 of 15	5 of 8
October 2009	Central	Isle of Wight	North & East	Portsmouth	Southampton	Western	Total
Crimes	188	43	160	168	167	192	918
Detection rate	7.45%	6.98%	11.25%	8.93%	6.59%	5.73%	7.84%
Detection numbers	14	3	18	15	11	11	72

Theft of a motor vehicle

Year to date	Central	Isle of Wight	North & East	Portsmouth	Southampton	Western	Total
Crimes	355	76	381	229	319	264	1624
MSG position	6 of 15	2 of 15	8 of 15	5 of 15	4 of 15	4 of 15	1 of 8
Detection rate	16.34%	40.79%	16.80%	19.65%	12.23%	22.35%	18.23%
MSG position	10 of 15	3 of 15	13 of 15	4 of 15	4 of 15	2 of 15	4 of 8
October 2009	Central	Isle of Wight	North & East	Portsmouth	Southampton	Western	Total
Crimes	42	3	49	34	49	35	212
Detection rate	11.90%	66.67%	18.37%	14.71%	10.20%	17.14%	15.09%
Detection numbers	5	2	9	5	5	6	32

Theft from a motor vehicle

Year to date	Central	Isle of Wight	North & East	Portsmouth	Southampton	Western	Total
Crimes	1170	239	996	976	960	1246	5587
MSG position	11 of 15	1 of 15	5 of 15	6 of 15	7 of 15	13 of 15	4 of 8
Detection rate	3.50%	5.44%	8.03%	4.92%	5.83%	3.77%	5.10%
MSG position	13 of 15	13 of 15	10 of 15	11 of 15	11 of 15	13 of 15	6 of 8
October 2009	Central	Isle of Wight	North & East	Portsmouth	Southampton	Western	Total
Crimes	146	40	111	134	118	157	706
Detection rate	6.16%	2.50%	8.11%	7.46%	5.08%	3.18%	5.67%
Detection numbers	9	1	9	10	6	5	40

Robbery, dwelling burglary and vehicle crime are the component parts of serious acquisitive crime. These individual crime types do not have targets.

Catching criminals and managing offenders

Gun crime rate

	Central	Isle of Wight	North & East	Portsmouth	Southampton	Western	Total	MSG position 01 08 08 - 31 07 09
YTD October 2009	27	4	10	11	11	8	71	2 of 8
YTD October 2008	18	2	20	11	17	13	81	
% change from 08/09	50.0%	100.0%	-50.0%	0.0%	-35.3%	-38.5%	-12.3%	

SPI 5.5

Gun crime figures published reflect the APACS technical definition which includes "where the victim is convinced of the presence of a firearm, even if it is concealed and there is evidence of the suspect's intention to create this impression".

Knife crime rate

	Central	Isle of Wight	North & East	Portsmouth	Southampton	Western	Total	MSG position 01 04 08 - 31 03 09
YTD October 2009	62	18	80	71	113	39	383	3 of 8
YTD October 2008	85	19	78	68	140	57	447	
% change from 08/09	-27.1%	-5.3%	2.6%	4.4%	-19.3%	-31.6%	-14.3%	

SPI 5.6

Knife = knife or other sharp instrument (including broken glass/bottles) piercing the skin or, for threats and attempts, instruments normally capable of piercing the skin. The measure for counting broken glass/bottles has changed for 09-10 with less occurrences being counted by the Home Office. Knife crime figures published reflect the APACS technical definition which includes "where the victim is convinced of the presence of a knife, even if it is concealed and there is evidence of the suspect's intention to create this impression".

Serious sexual crime OBJ rate

SPI 6.4

The table below shows % of persons brought to justice for serious sexual crimes against the total number of serious sexual crimes

OBJT Crime category	Mar-09	Apr-09	May-09	Jun-09	Jul-09	Aug-09	Rolling average
Tier 1: Serious Sexual Offences	38%	29%	34%	35%	11%	9%	30%

Murder offences

SPI 5.4

	Central	Isle of Wight	North & East	Portsmouth	Southampton	Western	Total
YTD October 2009	4	2	1	1	1	2	11
YTD Domestic Murders 2009	1	0	0	0	0	1	2
YTD October 2008	0	0	0	0	4	1	5
YTD Domestic Murders 2008	0	0	0	0	3	1	4

FIU1 submissions

	Central	Isle of Wight	North & East	Portsmouth	Southampton	Western	Total
YTD October 2009	137	141	154	107	149	112	800
Number of eligible detections	2218	1015	2265	2137	2228	1838	11701
% submission rate	6%	14%	7%	5%	7%	6%	7%

	Central	Isle of Wight	North & East	Portsmouth	Southampton	Western	Total
October 2009	15	18	26	11	16	18	104
Number of eligible detections	277	113	325	305	264	238	1522
% submission rate	5%	16%	8%	4%	6%	8%	7%

Eligible crimes are those covered by Proceeds of Crime Act (POCA)

Prolific and other Priority Offenders (PPOs) convictions

Number of convictions recorded against identified, prolific and other priority offenders (PPOs)

	Jan 2009	Feb 2009	Mar 2009	Apr 2009	May 2009	June 2009	July 2009	Aug 2009
Persistent Young Offenders	94	83	80	99	78	83	73	49
Priority Prolific Offenders	27	40	25	39	23	32	23	33
Persistent Priority Prolific Young Offenders	3	2	2	6	2	6	4	2
Young Offenders	230	162	191	195	175	185	207	172

Class A drugs sanction detections

Force Target

	Central	Isle of Wight	North & East	Portsmouth	Southampton	Western	Total
YTD October 2009	15	11	32	28	54	68	208
YTD Target	29.32	23.45	46.90	46.90	58.63	29.32	234.52
October 2009	1	3	3	6	16	2	31

Drug seizures information

	Central	Isle of Wight	North & East	Portsmouth	Southampton	Western	Total
YTD September 2009	635	1011	351	350	548	289	3184
YTD September 2008	528	637	296	352	180	271	2264
% change from 08/09	20.3%	58.7%	18.6%	-0.6%	204.4%	6.6%	40.6%

Note: This data is produced one month in arrears

Number of Organised Crime Groups (OCGs) disrupted

Force Target

YTD October 2009	2008/2009	2009/2010	YTD Target
Number of OCGs identified and mapped	34	38	
Number of OCGs disrupted or partially disrupted through Crime OCU activity	22	29	14.7
Number of OCGs subject to tactical activity	62	78	

Protecting our communities

Domestic violence and abuse is defined by ACPO as: 'any incidence of threatening behaviour, violence or abuse (psychological, physical, sexual, financial or emotional) between adults, aged 18 and over, who are or have been intimate partners or family members, regardless of gender or sexuality'

Domestic violence and abuse crime arrest rate

Force Target

Domestic violence arrest rate is based on records where the occurrence has been flagged as a domestic, and has an arrest event or a linked person reason of arrested.

Target >80%

Year to Date	Central	Isle of Wight	North & East	Portsmouth	Southampton	Western	Total
Domestic crimes	1207	370	896	806	1154	892	5325
Domestic crime detection rate	32.89%	42.70%	38.84%	37.72%	32.84%	39.57%	36.41%
Domestic crime arrests	899	278	717	653	920	663	4130
Domestic crime arrest rate	74.48%	75.14%	80.02%	81.02%	79.72%	74.33%	77.56%

Month	Central	Isle of Wight	North & East	Portsmouth	Southampton	Western	Total
Domestic crimes	176	50	109	120	170	120	745
Domestic crime detection rate	22.16%	46.00%	31.19%	46.67%	28.24%	40.00%	33.29%
Domestic crime arrests	114	37	91	98	129	81	550
Domestic crime arrest rate	64.77%	74.00%	83.49%	81.67%	75.88%	67.50%	73.83%

Police No Further Action (NFA) Rate

Incidents classified as Domestic Violence crimes

Year to Date	Central	Isle of Wight	North & East	Portsmouth	Southampton	Western	Total
Domestic Crimes	This data is currently not available. Work is continuing to provide this data in the coming months.						
Domestic Crime NFA'd							
Domestic Crime NFA Rate							

Month	Central	Isle of Wight	North & East	Portsmouth	Southampton	Western	Total
Domestic Crimes	This data is currently not available. Work is continuing to provide this data in the coming months.						
Domestic Crime NFA'd							
Domestic Crime NFA Rate							

Repeat incidents of domestic violence cases reviewed at MARAC

SPI 14.1

A Multi Agency Risk Assessment Conference (MARAC) meet to manage the highest risk domestic abuse cases. A 'case' = a victim & perpetrator(s) being reviewed at the same MARAC. Once a case has been to MARAC, it remains flagged as a MARAC case for 12 mths after the most recent MARAC review. A repeat case is when a case reviewed at MARAC has also been reviewed at the same MARAC within the preceding 12 mths. For further information on this measure please refer to Home Office Guidance on Performance Indicators for Policing & Community Safety 09/10.

Year to Date	Central	Isle of Wight	North & East	Portsmouth	Southampton	Western	Total
Number of cases reviewed at MARAC	219	136	286	256	253	203	1353
Repeat cases reviewed at MARAC	55	48	108	84	108	45	448
% Repeat cases	25.11%	35.29%	37.76%	32.81%	42.69%	22.17%	33.11%

Hate crime detection rate

Force Target

Target >45%

Year to Date	Central	Isle of Wight	North & East	Portsmouth	Southampton	Western	Total
Incidents	194	33	154	261	384	128	1154
Crimes	152	28	126	189	279	108	882
Detections	74	13	64	91	134	43	419
Detection Rate	48.68%	46.43%	50.79%	48.15%	48.03%	39.81%	47.51%

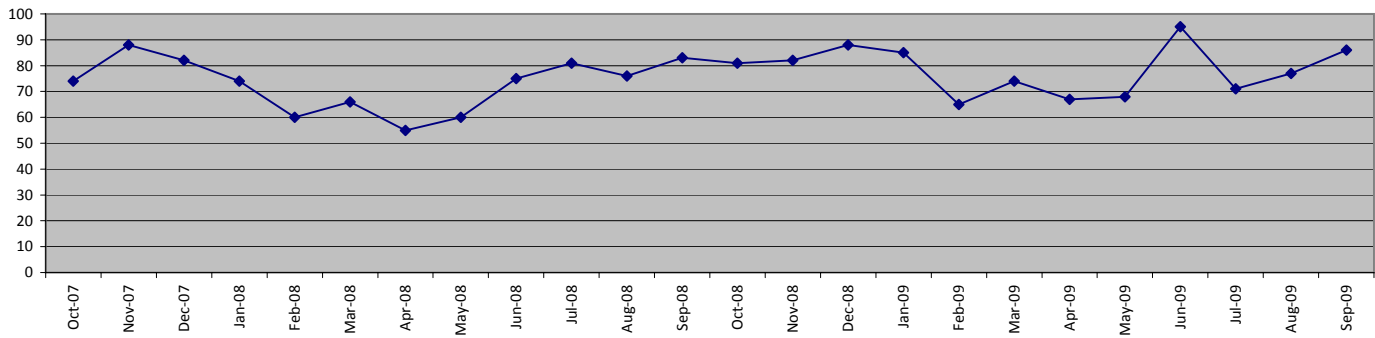
Month	Central	Isle of Wight	North & East	Portsmouth	Southampton	Western	Total
Incidents	27	6	31	35	64	28	191
Crimes	28	5	31	24	49	26	163
Detections	13	0	17	13	21	11	75
Detection Rate	46.43%	0.00%	54.84%	54.17%	42.86%	42.31%	46.01%

Protecting our communities

Road traffic casualties

SPI 9.1 Force Target

Fatal/serious injury casualties - all victims

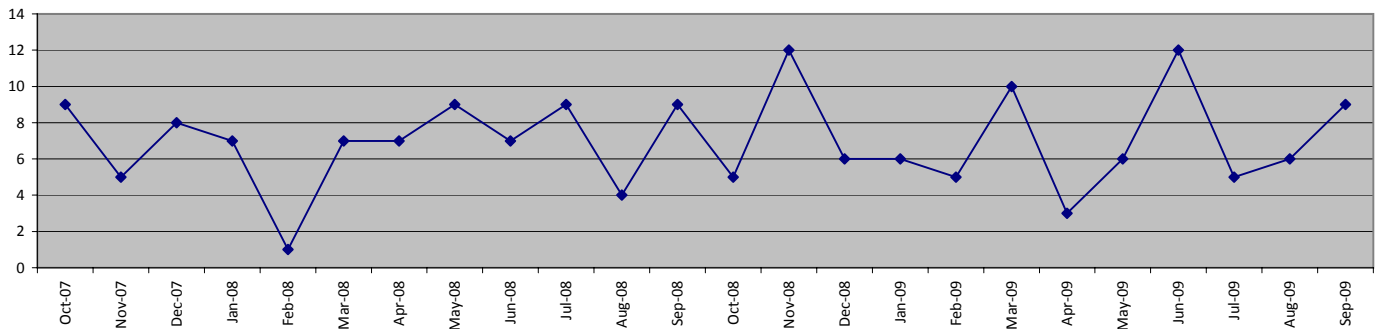


The Force target 2009/2010 is for less than 888 casualties, which equates to less than 445 in 183 days

YTD Sept 2009 = 464 casualties

	Central	Isle of Wight	North&East	Portsmouth	Southampton	Western	Total
April 2009 - September 2009	125	39	89	42	50	119	464
of these, fatalities were	5	1	5	1	0	9	21
April 2008 - September 2008	82	48	90	51	44	115	430

Fatal/serious injury casualties - victims under 16 years



The DETR target is for a 50% reduction in child casualties by 2010 from 164 to 82

	Central	Isle of Wight	North&East	Portsmouth	Southampton	Western	Total
April 2009 - September 2009	11	2	6	7	5	10	41
of these, fatalities were	0	0	0	0	0	0	0
April 2008 - September 2008	8	7	8	6	8	8	45

Note: YTD numbers may change as the accident record data are updated each month

Note: The casualties in East Hampshire have all been attributed to North & East OCU in the absence of a breakdown by OCUs

Note: In October an issue was identified with the data collection for this measure. This resulted in an increase in the figures. The data provided on this page has now been updated.

Protecting our communities

Impaired Driving Interventions

		Dog Support Unit	Force Support Unit	Roads Policing Unit	Tactical Firearms Support Unit	Other 8 OCU Officers	8 OCU Total	Rest of Force	Force Total
Breath Tests ¹	YTD June - Sept 09	74	66	5867	785	0	6792	7789	14581
	Sept 09	10	7	856	90	0	963	1181	2144
	YTD June - Sept 08 ²	0	22	7066	916	0	8004	5993	13997
	Sept 08	0	0	1797	424	0	2221	1973	4194
Field Impairment Tests	YTD April - October 09	0	0	198	7	0	205	26	231
	October 09	0	0	11	2	0	13	3	16
	YTD April - October 08	0	0	494	15	1	510	28	538
	October 08	0	0	41	1	1	43	1	44

1 Due to staff absence, Breath Test data is not currently available for October. This will be updated in time for the reporting deadline next month.

2 The Drager (breath test) units were implemented in June 2008 therefore no data can be included in these figures for April and May 2008.

Speed Offences

	Dog Support Unit	Force Support Unit	Roads Policing Unit	Specialist Firearms Officers	Armed Response Vehicles	Other 8 OCU Officers	8 OCU Total	Rest of Force	Force Total
YTD April - September 09	15	2	4021	6	37	6	4087	156	4243
September 09	2	0	600	2	7	0	611	26	637
YTD April - September 08	13	0	5045	21	137	0	5216	307	5523
September 08	2	0	641	3	8	0	654	54	708
October 09 (Provisional)	0	0	641	1	5	1	648	70	718

Mobile Phone Offences

	Dog Support Unit	Force Support Unit	Roads Policing Unit	Specialist Firearms Officers	Armed Response Vehicles	Other 8 OCU Officers	8 OCU Total	Rest of Force	Force Total
YTD April - September 09	7	7	1536	39	166	0	1755	661	2416
September 09	1	0	238	8	39	0	286	132	418
YTD April - September 08	11	2	2534	36	377	0	2960	1054	4014
September 08	2	0	303	6	36	0	347	138	485
October 09 (Provisional)	0	0	211	1	21	0	233	84	317

Seatbelt Offences

	Dog Support Unit	Force Support Unit	Roads Policing Unit	Specialist Firearms Officers	Armed Response Vehicles	Other 8 OCU Officers	8 OCU Total	Rest of Force	Force Total
YTD April - September 09	16	1	2004	1	99	0	2121	620	2741
September 09	3	0	241	0	13	0	257	127	384
YTD April - September 08	21	1	4111	3	375	3	4514	1232	5746
September 08	2	0	480	0	35	0	517	110	627
October 09 (Provisional)	0	0	157	0	3	0	160	63	223

Sickness Data

In July Hampshire Constabulary undertook a major upgrade of the software used to provide sickness data. This upgrade has resulted in a significant amount of change to the system and has resulted in sickness data being unavailable in time to publish in this Performance Profile

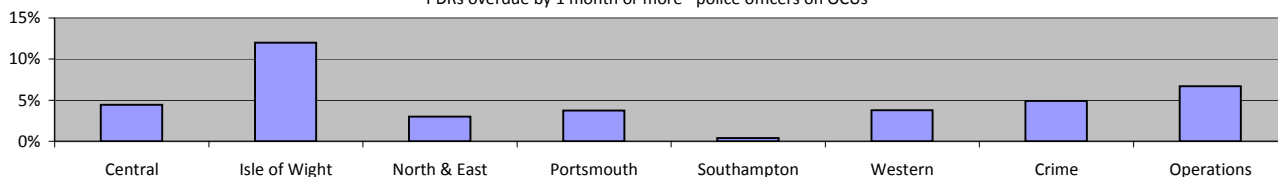
SPI 13.1 Force Target
SPI 13.2 Force Target

Making the most of our resources

Overdue PDRs

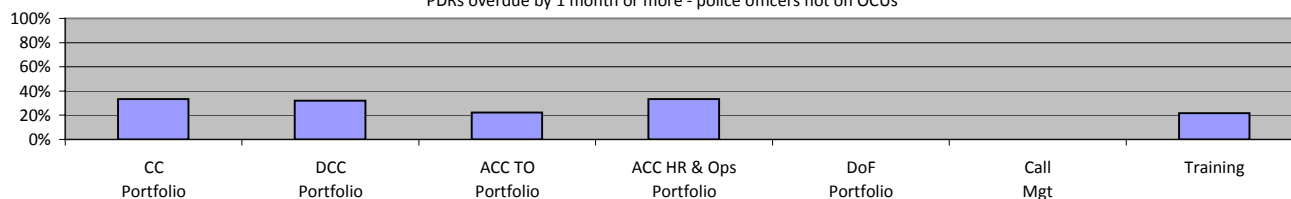
Police officer PDRs - police officers in OCU's

PDRs overdue by 1 month or more - police officers on OCU's



October 2009	Central	Isle of Wight	North & East	Portsmouth	Southampton	Western	Crime	Operations
Population	606	225	569	403	489	530	406	388
Overdue	27	27	17	15	2	20	20	26
% overdue	4.5%	12.0%	3.0%	3.7%	0.4%	3.8%	4.9%	6.7%

PDRs overdue by 1 month or more - police officers not on OCU's

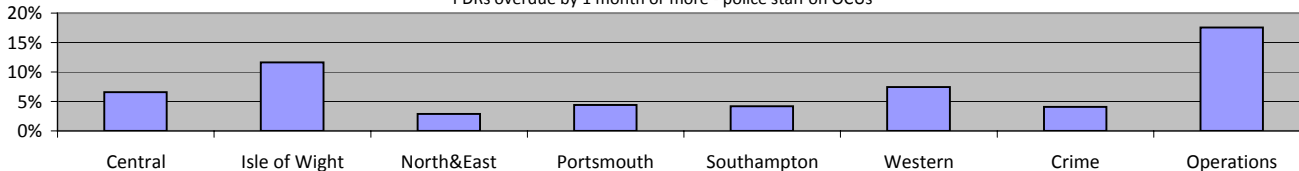


October 2009	CC Portfolio	DCC Portfolio	ACC TO Portfolio	ACC HR & Ops Portfolio	DoF Portfolio	Call Mgt	Training
Population	6	47	9	12	N/A	33	55
Overdue	2	15	2	4	N/A	0	12
% overdue	33.3%	31.9%	22.2%	33.3%	N/A	0.0%	21.8%

ACC HR and Ops Portfolio excludes Training figures which are reported on separately. No police officers work within DoF Portfolio.

Police staff PDRs - police staff in OCU's

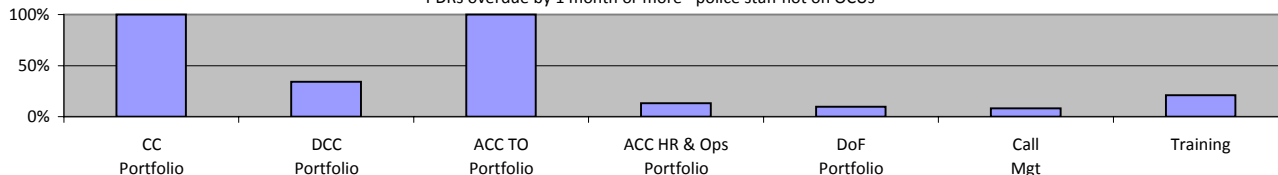
PDRs overdue by 1 month or more - police staff on OCU's



October 2009	Central	Isle of Wight	North&East	Portsmouth	Southampton	Western	Crime	Operations
Population	244	103	210	182	215	202	317	131
Overdue	16	12	6	8	9	15	13	23
% overdue	6.6%	11.7%	2.9%	4.4%	4.2%	7.4%	4.1%	17.6%

Police staff PDRs - police staff not in OCU's

PDRs overdue by 1 month or more - police staff not on OCU's



October 2009	CC Portfolio	DCC Portfolio	ACC TO Portfolio	ACC HR & Ops Portfolio	DoF Portfolio	Call Mgt	Training
Population	2	299	2	406	143	400	91
Overdue	2	102	2	53	14	32	19
% overdue	100.0%	34.1%	100.0%	13.1%	9.8%	8.0%	20.9%

ACC HR and Ops Portfolio excludes Training figures which are reported on separately

Making the most of our resources

Budget spend

The actual spend to the end of September 2009 was £143.3m. The projected spend for the force at the end of the financial year is £300.212m, which will be an underspend of £2.886m against the agreed budget.

	Central	Isle of Wight	North & East	Portsmouth	Southampton	Western	Crime	Operations
Projected over/(under)spend 2009/2010	-£136,000	£1,000	-£555,000	-£116,000	-£31,000	-£456,000	-£391,000	-£353,000

Efficiency savings

The Authority needs to maximise efficiency gains both due to its budgetary constraints and in order to achieve value for money. In addition, there is a national Home Office target to deliver recurring efficiency or productivity gains equivalent to 10.3% of the 2007/08 'Gross Revenue Expenditure' over three years, by the end of 2010/11. Each Authority must set its own challenging target. The Authority and Force are currently working to a target equivalent to the national target, which equates to £33m over the 3 years (an average of £11m per annum). The actual achieved as at 31/03/09 was £9.4m. The current value of efficiency initiatives included in the register is £25.373m

Specialist support

7 OCU	OCU Supported							Total
	Central	Isle of Wight	North & East	Portsmouth	Southampton	Western	Other	
April 2009	2	1	4	4	4	1	0	16
May 2009	1	1	0	3	3	0	0	8
June 2009	4	0	1	2	1	1	0	9
July 2009	4	1	1	1	1	1	0	9
August 2009	3	1	6	0	1	3	0	14
September 2009	2	2	2	1	2	5	0	14
October 2009	0	0	1	2	0	2	0	5
Total	16	6	15	13	12	13	0	75

NOTE: An 'assist' includes assistance that is outside of normal working practices and can encompass practical resources and/or managerial support. For example, it includes support with house to house/investigative enquiries, administrative support, interviewing/statement taking, advice and IT examinations, to name a few. A single assist can involve anything from one member of staff to several from a period of a few hours, to a whole week. An assist does not include phone calls.

8 OCU

8 OCU Commitment to ANPR Operations - April - October 09								
	OCU Supported							Total
	1	2	3	4	5	6	Other	
No. of Ops	90	8	65	42	59	40	11	315
Arrests	40	3	17	17	43	16	1	137
S.165 Vehicle Seizures	131	10	51	127	137	73	39	568
Impaired Drivers	14	0	6	14	37	5	0	76
Total Results	185	13	74	158	217	94	40	781
Cash/POCA Seizures	Seized by or assisted by 8 OCU ANPR teams (£)							19,170
Drugs Seizures	Seized by or assisted by 8 OCU ANPR teams (approx £)							1,500,125

N.B. Recent court case showed Cocaine to the value of £1.5 million seized by RPU.

8 OCU NON-ANPR Pre-Planned Operations/Tasks/Requests for Resources - April - October 09								
	OCU Supported							Total
	1	2	3	4	5	6	Other*4	
No. of Ops	146	71	130	117	241	213	56	974
Arrests	48	318	41	50	88	57	15	617
S.165 Vehicle Seizures	25	2	5	13	23	29	26	123
Total Results	73	320	46	63	111	86	41	740
Cash/POCA Seizures	Seized by or assisted by 8 OCU teams (not ANPR) (£)							163,609
Drugs Seizures	Seized by or assisted by 8 OCU teams (not ANPR) (approx Kgs)							16.3

Equipping our team to deliver

Financial awareness training

Financial awareness training will be undertaken for budget holders with the aim of ensuring a minimum of 95% of budget holders are trained by the end of the financial year. The target is for at least 95% of all Chief Inspector to Chief Superintendents to be trained by the end of the financial year

Full Year Apr 09 - Mar 10	
Courses Planned	Places Available
10	160

Year to Date (Oct 09)	
Courses Held	Numbers Trained
6	31
	76

Chief Inspector to Chief Superintendent (towards target)
Total number trained

Preparing for frontline supervision

A leadership project is underway and a formal Force leadership target will be established with supporting material to be published here in the coming months. The tables below provide data on 2009/2010 leadership training courses

	Full Year Apr 09 - Mar 10		Year to Date (Oct 09)	
	Courses Planned	Places Available	Courses Held	Numbers Trained
Sergeants Operational Activities	6	108	4	44
Inspectors Statutory Responsibilities	5	70	3	36
First Line Manager - Leadership Part 1	6	96	5	75
First Line Manager - Leadership Part 2	6	96	5	69
First Line Manager - Action Learning Sets	18	108	20	173

Mobile data

The Constabulary has achieved the roll out of 300 mobile data terminals (as required by NPIA). Further data follow in the new year.

Minority ethnic officer recruitment

SPI 3.1

	All recruits	Minority ethnic recruits	%
YTD October 2009	101	3	3.0%

Female officer representation

SPI 3.2

	Male strength	Female strength	%
YTD October 2009	2683.9	1020.7	27.6%