



Performance Summary November 2008

This document contains a strategic overview of the Constabulary's performance. It has a variety of performance measures within it, but for the first time our performance is aligned to the Force Control Strategy.

It is a headline document that will enable our customers, both internally and externally, to easily assess performance in key domains. Additionally with the introduction of the national performance framework called the Assessment of Police and Community Safety (APACS), it is crucial that we become focused and more accountable.

At the front of the document there are several matrices that reflect our performance against our targets, firstly year to date and secondly relevant for that particular month.

Performance in key areas is then explored in more depth with an indication of where each measure has originated - for example, APACS Statutory Performance Indicator (SPI) or a Force Control Strategy (FCS) measure.

This document is then taken forward by key stakeholders within the organisation to the Force Performance Review Group, where it is used to highlight areas of both best practice and those for development.

This is an evolving document and as such, the content may alter over time and any feedback would be welcomed by the Performance Review Team.

Index

Page

Year to date performance matrix

4-5

Monthly performance matrix

6-7

including notes on matrices terminology

Safer neighbourhoods

8	Overall satisfaction	SPI 1.1	FCS	Consultation & Research Team
8	Being kept informed		FCS	Consultation & Research Team
8	Comparative satisfaction of minority ethnic groups	SPI 1.2		Consultation & Research Team
8	Satisfaction of victims of racist incidents	SPI 1.3		Consultation & Research Team
8	Confidence in local police	SPI 2.3	FCS	iQuanta - Quarterly
8	Understanding community issues		FCS	iQuanta - Quarterly
8	Perception of anti-social behaviour	SPI 4.1		iQuanta - Quarterly
8	Perception of drug use in local area	SPI 4.3	FCS	iQuanta - Quarterly
8	Perception of drunk or rowdy behaviour	SPI 4.2		iQuanta - Quarterly
9	Assault with less serious injury	SPI 5.3	FCS	Business Objects
10	Successful neighbourhood priorities		FCS	Neighbourhood Policing Lead - ACC 'TO' Dept
10	Anti-social use of motor vehicle (NSIR)		FCS	PRT - NSIR Return
10	Anti-social behaviour (NSIR)		FCS	PRT - NSIR Return
11	Criminal damage		FCS	Business Objects

Safeguard people

12	DV incident arrest rate		FCS	Business Objects
12	DV victimisation		FCS	N/A
12	Repeat victims of domestic violence		FCS	Business Objects
12	Domestic violence OBJT rate		FCS	Criminal Justice Department
13	Hate crime detection rate		FCS	Business Objects
13	Sexual offender reoffending rate		FCS	N/A

Protect our communities

14	Road traffic casualties	SPI 9.1	FCS	8 OCU Performance Team
----	-------------------------	---------	-----	------------------------

Prevent, reduce and detect crime

15	Serious violent crime and sanction detections	SPI 5.1	FCS	Business Objects
16	All crime		FCS	Business Objects
17	Serious acquisitive crime and sanction detections	SPI 5.2	FCS	Business Objects
18	Serious acquisitive crime breakdown			
19	Gun crime rate	SPI 5.5		Business Objects and Manual Checking
19	Knife crime rate	SPI 5.6		Business Objects and Manual Checking
19	Serious sexual crime OBJT rate	SPI 6.4	FCS	Criminal Justice Department
19	Murder offences		FCS	Business Objects
19	Asset recovery	SPI 8.1	FCS	Specialist Investigation Department
19	PPO convictions	SPI 10.1	FCS	Criminal Justice Department
19	Class A drugs sanction detections		FCS	Business Objects
19	Drug intervention measures (DIMs)			Force Intelligence

Organisational management

20	Police officer sickness	SPI 13.1	FCS	PRT - Delphi + Personnel - Staffing Figures
21	Police staff sickness	SPI 13.2	FCS	PRT - Delphi + Personnel - Staffing Figures
22	Overdue PDRs			Personnel
23	Minority ethnic officer recruitment	SPI 3.1		Personnel
23	Female officer representation	SPI 3.2		Personnel
23	NCRS compliance		FCS	Force Incident & Crime Registrar
23	Budget spend		FCS	Finance
23	Efficiency savings		FCS	Finance

Specialist Operations - 7 OCU

24-25	Murder & domestic murder offences (SPI 5.4), CSI attendance, DNA & fingerprint identifications, forensic examinations major incidents, class A drug detections, kidnaps, abductions, blackmails			
-------	---	--	--	--

Specialist Operations - 8 OCU

26	Patrol availability, pre-planned operations, ANPR operations, interventions in support of OCUs & Force Strategy			
----	---	--	--	--

Operational Services

27	Performance highlights relating to Operation Services Departments which include Call Management, Criminal Justice and Personnel and Training			
----	--	--	--	--

Victim focus

28-29	APACs indicators for user satisfaction, Victim Code compliance, victim support status			
-------	---	--	--	--

Restricted data

30

FCS = Force Control Strategy

PRT = Performance Review Team

SPI - Statutory Performance Indicator

Year to date performance matrix

This matrix is based on year to date comparison with 2007/2008 performance

		Target	Actual	
Safer Neighbourhoods	Overall satisfaction (data for rolling 12 months)	>62.0%	62.0%	
	Being kept informed (data for rolling 12 months)	>60.0%	47.0%	
	Confidence in local police	>58.3%	57.9%	
	Understanding community issues	>66.5%	66.8%	
	Perception of drug use in local area	<23.3%	26.4%	
	Assault with less serious injury*	-5.0%	2.7%	
	OCU specific targets			
	Successful neighbourhood priorities	>33.0%	Pg 10	
	Anti-social use of motor vehicle	-5.0%	-20.1%	
	Anti-social behaviour	-5.0%	-6.4%	
	Reduce criminal damage	-12.0%	-9.6%	
	Safer Neighbourhoods - targets achieved			4
Safeguard people	Domestic violence incident arrest rate	>35.0%	34.1%	
	Repeat victims of domestic violence	-5.0%	12.1%	
	Hate crime detection rate	>45.0%	33.8%	
Safeguard people - targets achieved			0	
Protect our communities	Road traffic casualties	<550	429	
	Protect our communities - targets achieved		1	

Central	Isle of Wight	North & East	Portsmouth	Southampton	Western	Crime	Operations
63.0%	68.0%	59.0%	62.0%	59.0%	64.0%	N/A	
47.0%	54.0%	45.0%	46.0%	47.0%	48.0%	N/A	
Force level target - to exceed MSG average by 5% whilst not declining on current performance							
Force level target - to exceed MSG average by 3.5% whilst not declining on current performance							
Force level target - be under MSG average whilst not declining on current performance							
-2.6%	0.3%	1.8%	-1.5%	12.8%	-0.5%	N/A	
-5.91%	-4.52%	0.00%	-4.00%	-8.69%	-4.21%	N/A	
Quarterly Data - See Page 10							N/A
-23.5%	-23.8%	-21.4%	-27.9%	-14.4%	-6.8%	N/A	
-9.4%	-6.2%	-0.4%	-9.6%	-3.0%	-10.1%	N/A	
-10.3%	-15.5%	-4.1%	-5.2%	-13.9%	-9.6%	N/A	
3	4	1	3	2	3		
35.2%	35.8%	37.5%	25.9%	29.0%	50.0%	N/A	
-8.3%	20.0%	33.0%	-12.0%	39.3%	22.7%	N/A	
36.3%	38.5%	31.9%	27.4%	35.3%	37.4%	N/A	
2	1	1	1	0	1		
Owned by Operations OCU							429
							1

Year to date performance matrix cont'd

This matrix is based on year to date comparison with 2007/2008 performance

		Target	Actual	
Prevent, reduce and detect crime	Serious violent crime	-6.0%	-11.2%	
	Serious violent crime SD	>50.0%	50.3%	
	All crime*		-3.0%	-3.1%
		OCU specific targets		
	Serious acquisitive crime*		-2.0%	-5.3%
		OCU specific targets		
	Serious acquisitive crime SD	>15.0%	10.2%	
	Murder offences	<11	7	
	Asset recovery (shown in £1000s)	£2,763.4	£7,456.6	
	Class A drugs SD	>267	253	
Prevent, reduce and detect crime - targets achieved		6		
Organisational management	Police officer sickness	<5	5.10	
	Police staff sickness	<5	5.46	
	NCRS compliance	Good	N/A	
		90.0%		
	Budget spend	<58%	56%	
	Efficiency savings	>£10m	£2.44m	
Organisational management - targets achieved		1		
Force Total - targets achieved		12		

Central	Isle of Wight	North & East	Portsmouth	Southampton	Western	Crime	Operations
7.6%	-16.0%	-24.5%	-21.1%	-14.0%	8.1%	N/A	
53.1%	73.8%	63.8%	39.6%	42.5%	49.3%	N/A	
-1.9%	-7.3%	-0.8%	-3.5%	-5.4%	-2.0%	N/A	
-2.34%	-2.35%	-1.50%	-1.50%	-4.35%	-5.25%	N/A	
-4.4%	-11.2%	-2.4%	-2.4%	-5.0%	-10.0%	N/A	
-1.39%	-2.11%	-2.38%	-1.36%	-2.27%	-2.48%	N/A	
10.2%	15.4%	9.4%	11.9%	9.4%	9.4%	N/A	
Owned by Crime OCU						7	Owned by Crime OCU
This is a Force measure							
Owned by Crime OCU						253	Owned by Crime OCU
2	5	3	3	3	1	1	
4.88	5.55	3.66	6.21	5.26	6.28	4.41	4.82
6.20	7.51	4.81	7.02	5.62	5.74	4.82	3.42
Fair	Fair	Fair	Poor	Poor	Fair	No data	N/A
82%	82%	84%	72%	64%	85%	No data	
58%	56%	60%	60%	57%	57%	55%	60%
This is a Force measure							
2	1	2	0	1	1	3	2
9	11	7	7	6	6	4	3

Note: Some areas contained within the Force Control Strategy and Force Target documents do not yet appear in the above matrix. This is because, to date, it has not been possible to establish sufficient baseline data to set a target. Work is ongoing in these areas to establish a baseline. Information in relation to our progress within these areas is contained within the detailed sections of the profile.

Monthly performance matrix

This matrix is based on monthly data compared to force target

		Target	Actual
Safer Neighbourhoods	Assault with less serious injury*	<1126	1276
		OCU specific targets	
	Anti-social use of motor vehicle	<1410	1012
		OCU specific targets	
	Anti-social behaviour	<7843	7963
		OCU specific targets	
Reduce criminal damage	<2814	2891	
	OCU specific targets		
Safer Neighbourhoods - targets achieved			2
Safeguard people	Domestic violent incident arrest rate	> 35.0%	31.6%
	Hate crime detection rate	>45.0%	27.6%
	Safeguard people - targets achieved		
Protect our communities - targets achieved			
Prevent, reduce and detect crime	Serious violent crime	<72	75
		OCU specific targets	
	Serious violent crime SD	>50.0%	50.7%
	All crime*	<13150	13508
		OCU specific targets	
	Serious acquisitive crime*	<1839	1885
		OCU specific targets	
	Serious acquisitive crime SD	>15.0%	9.2%
	Asset recovery	£344,483	£2,486
Class A drugs SD	>33	35	
Prevent, reduce and detect crime - targets achieved			2
Organisational management	Police officer sickness	<0.63	0.58
	Police staff sickness	<0.63	0.57
	Organisational management - targets achieved		
Force Total - targets achieved			6

Central	Isle of Wight	North & East	Portsmouth	Southampton	Western	Crime	Operations
263	91	185	164	386	187		N/A
238.0	76.4	198.3	157.8	275.3	179.6		N/A
195	62	200	127	198	197		N/A
302.5	94.5	269.4	139.0	252.2	279.6		N/A
1601	567	1452	1297	1748	1152		N/A
1647.1	575.0	1346.3	1227.5	1674.6	1246.5		N/A
717	171	546	406	571	480		N/A
615.0	220.8	507.0	350.4	600.4	520.5		N/A
2	3	2	1	2	3		
32.1%	29.4%	37.1%	24.2%	26.2%	48.2%		N/A
40.9%	25.0%	30.8%	20.0%	25.0%	25.0%		N/A
0	0	1	0	0	1		
15	4	13	15	20	8		N/A
12.6	6.7	12.2	13.9	20.4	6.4		N/A
33.3%	75.0%	84.6%	33.3%	50.0%	50.0%		N/A
2852	771	2491	2166	2856	2372		N/A
2689.6	909.1	2469.5	2037.0	2779.2	2265.6		N/A
326	61	360	349	426	363		N/A
325.5	78.1	359.6	301.6	409.1	365.3		N/A
9.8%	23.0%	12.8%	6.9%	8.2%	6.1%		N/A
This is Force measure							
Owned by Crime OCU						35	Owned by Crime OCU
0	5	1	0	2	2	1	
0.48	0.55	0.32	0.50	0.64	0.92	0.64	0.40
0.47	1.34	0.71	1.15	-0.09	0.50	0.78	0.02
2	1	1	1	1	1	0	2
4	9	5	2	5	7	1	2

Note: Some areas contained within the Force Control Strategy and Force Target documents do not yet appear in the above matrix. This is because, to date, it has not been possible to establish sufficient baseline data to set a target. Work is on going in these areas to establish a baseline. Information in relation to our progress within these areas is contained within the detailed sections of this document.

Notes to be read in conjunction with matrices

All citizen focus data	Based on "completely or very satisfied"
OBTJ	Offenders Brought To Justice
Road traffic casualties	All data until 30 September 2008
Budget spend	Data is always one month in arrears
Efficiency savings	3 year target of £30m, notionally £10m per year
SD	Sanction detections
Anti-social use of motor vehicle & behaviour	Data is obtained from NSIR and always 1 month in arrears
Sickness data	Force Actual = total for ALL officers/police staff - including those not in OCU
OCU specific targets	OCU specific targets are rounded to 1 decimal place, the actual figure may therefore seem the same but appear red due to this rounding
Asset recovery	Asset recovery is the sum total of the values of cash forfeitures and confiscation orders
* = variable targets across OCUs for these target areas based on previous performance and MSG position	

Safer neighbourhoods

Overall satisfaction

Rolling 12 months data relates to: Dec 07 - Nov 08; rolling 3 months data relates to Sept 08 - Nov 08
Overall satisfaction includes burglary, vehicle crime, violent crime and RTCs

Target 62%	Central	Isle of Wight	North & East	Portsmouth	Southampton	Western	Force	No. Surveys
Rolling 12 months	63%	68%	59%	62%	59%	64%	62%	8825
Rolling 3 months	64%	77%	64%	66%	60%	67%	66%	1742

Being kept informed

Rolling 12 months data relates to: Dec 07 - Nov 08; rolling 3 months data relates to Sept 08 - Nov 08
Being kept informed includes burglary, vehicle crime, violent crime and RTCs

Target 60%	Central	Isle of Wight	North & East	Portsmouth	Southampton	Western	Force	No. Surveys
Rolling 12 months	47%	54%	45%	46%	47%	48%	47%	8595
Rolling 3 months	52%	64%	48%	50%	54%	57%	53%	1688

Comparative satisfaction of minority ethnic groups

Data relates to interviews which took place Dec 07 - Nov 08
These figures are for overall satisfaction for burglary, vehicle crime, violent crime & RTCs; it excludes racist incidents

	Completely and very satisfied	Completely, very and fairly satisfied
White	62.4%	81.5%
Minority Ethnic	55.2%	76.2%

Satisfaction of victims of racist incidents

These figures relate to interviews which took place Oct 07 - Sept 08; these will be updated quarterly
Racist incident overall satisfaction = % completely or very satisfied

	Central	Isle of Wight	North & East	Portsmouth	Southampton	Western	Force
%	50%	60%	67%	58%	52%	65%	58%
Number of surveys	28	10	30	38	50	61	187

British Crime Survey data

This data is updated by iQuanta approximately every quarter.

Data up to and including year ending June 2008	Confidence in local police		Understanding community issues		Targets MSG = Most Similar Group	
Avon & Somerset	48.8%		62.6%		Confidence in local police To exceed MSG by 5% whilst maintaining performance	
Bedfordshire	51.5%		61.4%			
Essex	54.8%		62.5%			
Hampshire	57.9%	2nd in MSG	66.8%	2nd in MSG	Understanding community issues To exceed MSG by 3.5% whilst maintaining performance	
Hertfordshire	58.5%		67.1%			
Kent	48.4%		58.9%			
Sussex	51.1%		61.7%		Perception of drug use To be under MSG whilst maintaining performance	
Thames Valley	55.5%		62.9%			
MSG	53.3%		63.0%			

Data up to and including year ending June 2008	Perception of anti-social behaviour		Perception of drug use		Perception of drunk or rowdy behaviour	
Avon & Somerset	11.6%		20.8%		22.8%	
Bedfordshire	17.3%		27.5%		21.5%	
Essex	10.4%		16.9%		19.4%	
Hampshire	17.7%	8th in MSG	26.4%	6th in MSG	30.9%	8th in MSG
Hertfordshire	14.6%		22.8%		25.3%	
Kent	15.8%		21.4%		22.2%	
Sussex	13.6%		22.7%		21.2%	
Thames Valley	16.2%		27.8%		25.2%	
MSG	14.7%		23.3%		23.6%	

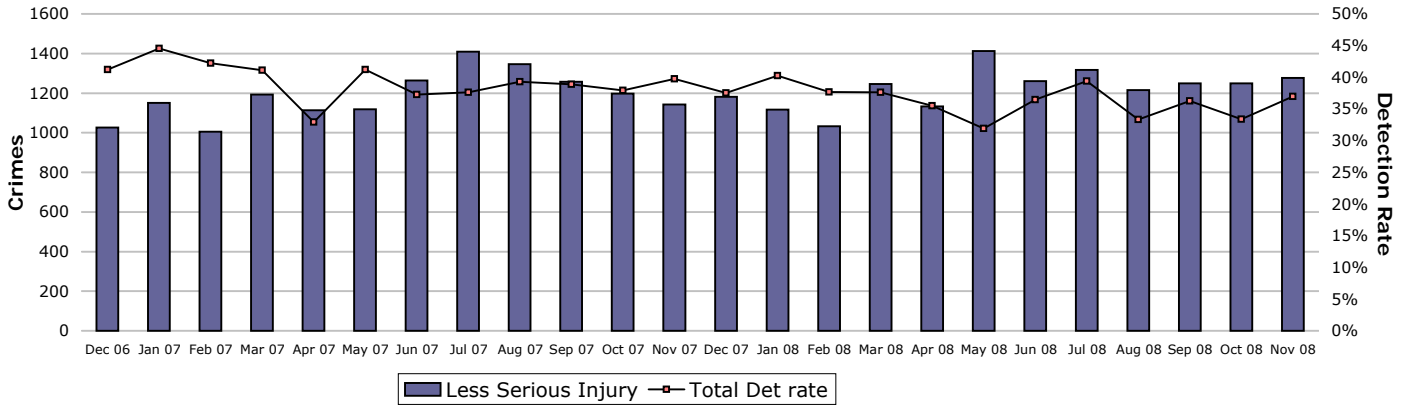
The target for the three areas below is not to decline against previous performance

	Dec 2007	Mar 2008	Jun 2008	Sep 2008	Dec 2008
Confidence in local police	57.4%	57.4%	57.9%		
Understanding community issues	64.2%	65.5%	66.8%		
Perception of drug use	23.0%	23.0%	26.4%		

Safer neighbourhoods

Assault with less serious injury

Assault with less serious injury consists of crimsec codes 8G and 8J

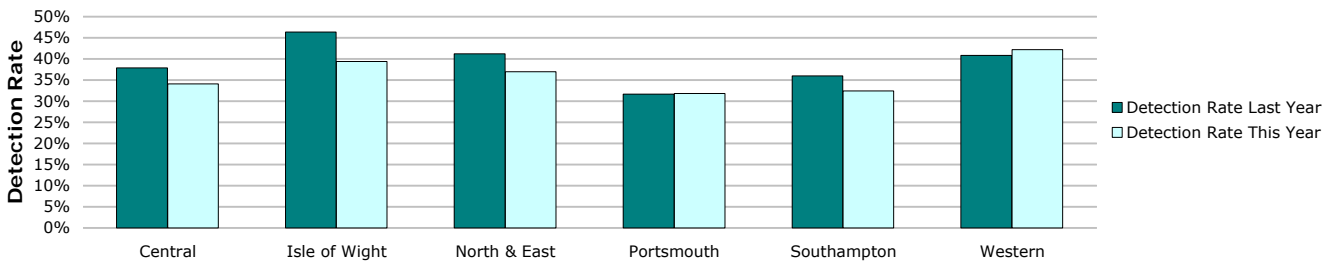


Crimes	Central	Isle of Wight	North & East	Portsmouth	Southampton	Western	Force
YTD Crimes	2023	696	1652	1412	2789	1542	10114
YTD Target	1936	622	1612	1283	2239	1460	9153
YTD 07/08 Crimes	2076	694	1622	1433	2473	1550	9848
This month	263	91	185	164	386	187	1276
% change from 07/08	-2.55%	0.29%	1.85%	-1.47%	12.78%	-0.52%	2.70%
MSG position	14 of 15	12 of 15	12 of 15	7 of 9	15 of 15	9 of 15	8 of 8



Detections	Central	Isle of Wight	North & East	Portsmouth	Southampton	Western	Force
YTD Detection Rate	34.06%	39.37%	36.99%	31.80%	32.45%	42.22%	35.39%
This month	35.36%	46.15%	39.46%	22.56%	32.12%	55.08%	36.99%
YTD 07/08 Detections	37.91%	46.40%	41.25%	31.68%	35.99%	40.84%	38.13%
MSG position	15 of 15	14 of 15	12 of 15	6 of 9	11 of 15	10 of 15	7 of 8

Note: Detections refer to Sanction Detections ONLY



Safer neighbourhoods

Successful neighbourhood priorities

Target = 33%	Central	Isle of Wight	North & East	Portsmouth	Southampton	Western	Force
Number of neighbourhoods	59	20	64	16	22	63	244
Number of priorities achieved	13	1	21	2	3	21	61
% of priorities achieved	22.0%	5.0%	32.8%	12.5%	13.6%	33.3%	25.0%

This data shows the number of neighbourhood priorities that have, over the last quarter, been successfully achieved. It should be remembered that limited value should be placed on this measure as it does not necessarily reflect community satisfaction with the police activity in support of the priorities. Work is still ongoing to capture this satisfaction level.

Anti-social use of motor vehicle

Data to be provided a month in arrears. It is gathered using Altaris closing codes as the primary data source, then RMS as the secondary data source to gather incidents not recorded within Altaris.

The Force total does not add up to the sum of OCUs, this is due to Altaris incident logs which do not contain a geographic location.

	Central	Isle of Wight	North & East	Portsmouth	Southampton	Western	Force
YTD Apr 08 to Oct 08	2016	589	1749	851	1825	2174	9546
YTD Apr 07 to Oct 07	2637	773	2226	1181	2133	2332	11942
October	195	62	200	127	198	197	1012
YTD Target	2157.6	674.2	1921.9	991.4	1799.4	1994.6	10057.4
% v target	-6.6%	-12.6%	-9.0%	-14.2%	1.4%	9.0%	-5.1%
% change from 07/08	-23.5%	-23.8%	-21.4%	-27.9%	-14.4%	-6.8%	-20.1%

Anti-social use of motor vehicle - relates to NSIR category Vehicle Nuisance/Inappropriate Use within the Anti-Social Behaviour Grouping

Anti-social behaviour

Data to be provided a month in arrears. It is gathered using Altaris closing codes as the primary data source, then RMS as the secondary data source to gather incidents not recorded within Altaris.

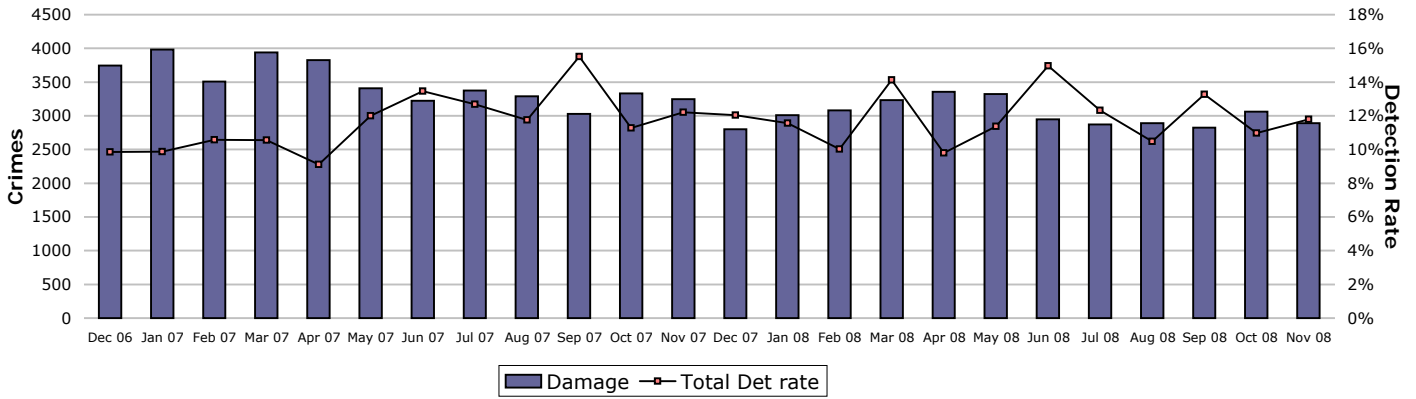
The Force total does not add up to the sum of OCUs, this is due to Altaris incident logs which do not contain a geographic location.

	Central	Isle of Wight	North & East	Portsmouth	Southampton	Western	Force
YTD Apr 08 to Oct 08	12573	4526	11117	9169	13611	9371	61290
YTD Apr 07 to Oct 07	13885	4826	11162	10144	14033	10425	65475
October	1601	567	1452	1297	1748	1152	7963
YTD Target	11749.5	4101.8	9603.6	8755.8	11945.3	8891.8	55948.4
% v target	7.0%	10.3%	15.8%	4.7%	13.9%	5.4%	9.5%
% change from 07/08	-9.4%	-6.2%	-0.4%	-9.6%	-3.0%	-10.1%	-6.4%

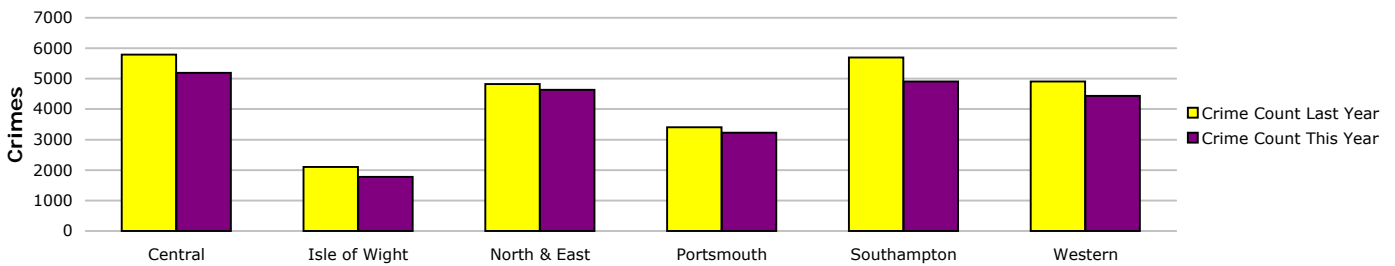
Anti-social behaviour - relates to NSIR categories Environmental Damage/Littering, Rowdy & Inconsiderate and Neighbours within the Anti-Social Behaviour Grouping

Safer neighbourhoods

Criminal damage

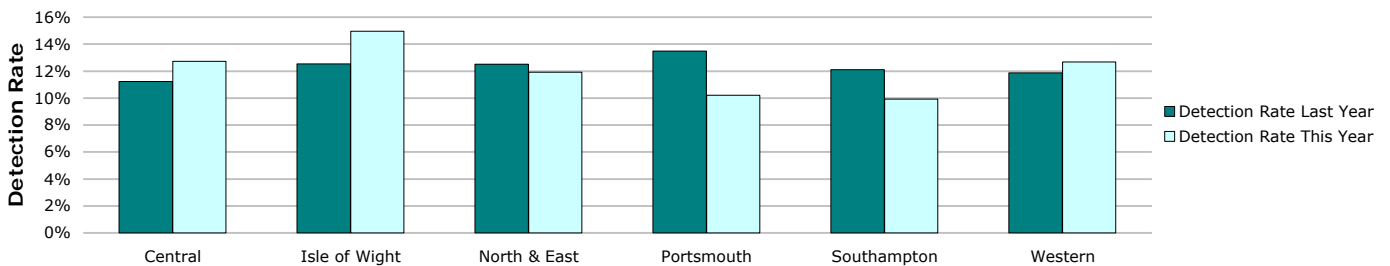


Crimes	Central	Isle of Wight	North & East	Portsmouth	Southampton	Western	Force
YTD Crimes	5194	1780	4630	3224	4905	4436	24169
YTD Target	5002	1795	4123	2850	4883	4233	22886
YTD 07/08 Crimes	5788	2106	4829	3402	5700	4906	26731
This month	717	171	546	406	571	480	2891
% change from 07/08	-10.26%	-15.48%	-4.12%	-5.23%	-13.95%	-9.58%	-9.58%
MSG position	14 of 15	13 of 15	14 of 15	7 of 9	15 of 15	9 of 15	8 of 8



Detections	Central	Isle of Wight	North & East	Portsmouth	Southampton	Western	Force
YTD Detection Rate	12.73%	14.94%	11.92%	10.20%	9.93%	12.67%	11.82%
This month	8.23%	22.81%	12.09%	8.37%	13.66%	13.54%	11.80%
YTD 07/08 Detections	11.23%	12.54%	12.51%	13.49%	12.11%	11.86%	12.15%
MSG position	9 of 15	10 of 15	14 of 15	8 of 9	14 of 15	11 of 15	8 of 8

Note: Detections refer to Sanction Detections ONLY



Safeguard people

Domestic violence is defined by ACPO as: 'any incidence of threatening behaviour, violence or abuse (psychological, physical, sexual, financial or emotional) between adults, aged 18 and over, who are or have been intimate partners or family members, regardless of gender or sexuality'

Domestic violence incident arrest rate

Domestic violence arrest rate is based on records where the occurrence has been flagged as a domestic, and has an arrest event or a linked person reason of arrested. This measure looks at all domestic incidents (not only crimes).

Target >35%

Year to Date	Central	Isle of Wight	North & East	Portsmouth	Southampton	Western	Force
Domestic Incidents	3216	1010	2379	2648	3418	1581	14252
Domestic Incident Arrests	1133	362	891	686	992	797	4861
Domestic Incident Arrest Rate	35.23%	35.84%	37.45%	25.91%	29.02%	50.00%	34.11%

Month	Central	Isle of Wight	North & East	Portsmouth	Southampton	Western	Force
Domestic Incidents	365	126	264	294	436	193	1678
Domestic Incident Arrests	117	37	98	71	114	93	530
Domestic Incident Arrest Rate	32.05%	29.37%	37.12%	24.15%	26.15%	48.19%	31.59%

Domestic violence victimisation

Placeholder - This measure was a joint APACS and National Indicator Set measure looking at the work of MARACS. This measure was dropped from the 2008/09 APACS guidance, however is expected to be included in the 2009/10 guidance, at which time technical guidance will be published to enable reporting.

Repeat victims of domestic violence

Incidents	Central	Isle of Wight	North & East	Portsmouth	Southampton	Western	Force
YTD All Domestic Violence	3216	1010	2379	2648	3418	1581	14252
YTD 07/08 All Domestic Violence	2908	950	1991	2579	2970	1763	13161
YTD Repeat Victims	1314	421	711	1414	1186	584	5630
YTD 07/08 Repeat Victims	1194	374	597	1281	852	582	4880
YTD % Repeat Victims	40.9%	41.7%	29.9%	53.4%	34.7%	36.9%	39.5%
YTD 07/08% Repeat Victims	41.1%	39.4%	30.0%	49.7%	28.7%	33.0%	37.1%

Crimes - Target -5% in repeat victims	Central	Isle of Wight	North & East	Portsmouth	Southampton	Western	Force
YTD All Domestic Violence	1394	414	1037	844	1320	915	5924
YTD 07/08 All Domestic Violence	1371	426	941	915	1188	863	5704
YTD Repeat Victims	333	102	234	241	404	200	1514
YTD 07/08 Repeat Victims	363	85	176	274	290	163	1351
YTD % Repeat Victims	23.9%	24.6%	22.6%	28.6%	30.6%	21.9%	25.6%
YTD 07/08% Repeat Victims	26.5%	20.0%	18.7%	29.9%	24.4%	18.9%	23.7%
% change in repeat victims from 07/08	-8.3%	20.0%	33.0%	-12.0%	39.3%	22.7%	12.1%

Note: Crimes are a subset of the incident data. This data reflects ALL crime types, and is not restricted to 'violent' offences

Crimes - This month	Central	Isle of Wight	North & East	Portsmouth	Southampton	Western	Force
This month All Domestic Violence	175	45	121	100	186	117	744
This month Repeat Victims	51	14	20	33	66	27	211
This month % Repeat Victims	29.1%	31.1%	16.5%	33.0%	35.5%	23.1%	28.4%

Domestic violence OBJT rate

The Office for Criminal Justice Reform is working on the breakdown as required within this Summary which will be available shortly. The Tier 3 "other offences" measure includes the domestic violence OBJT rate which currently cannot be individually extracted. The table below shows the percentage of persons brought to justice for "other offences" which includes domestic violence (DV) incidents against the total number of DV incidents.

OBJT Crime category	OBJT Rate					
	Apr 2008	May 08	Jun 2008	Jul 2008	Aug 2008	Rolling average
Tier 3: Other Offences	29%	24%	26%	32%	26%	29%

Safeguard people

Hate crime detection rate

Hate Crime includes all crimes flagged within RMS with a Hate Crime indicator excluding those flagged purely as Police or Domestic.

Target >45%

Year to Date

	Central	Isle of Wight	North & East	Portsmouth	Southampton	Western	Force
Incidents	363	104	348	381	630	259	2085
Crimes	182	78	207	252	397	190	1306
Detections	66	30	66	69	140	71	442
Detection Rate	36.26%	38.46%	31.88%	27.38%	35.26%	37.37%	33.84%

Month

	Central	Isle of Wight	North & East	Portsmouth	Southampton	Western	Force
Incidents	29	10	37	31	54	31	192
Crimes	22	8	26	25	36	28	145
Detections	9	2	8	5	9	7	40
Detection Rate	40.91%	25.00%	30.77%	20.00%	25.00%	25.00%	27.59%

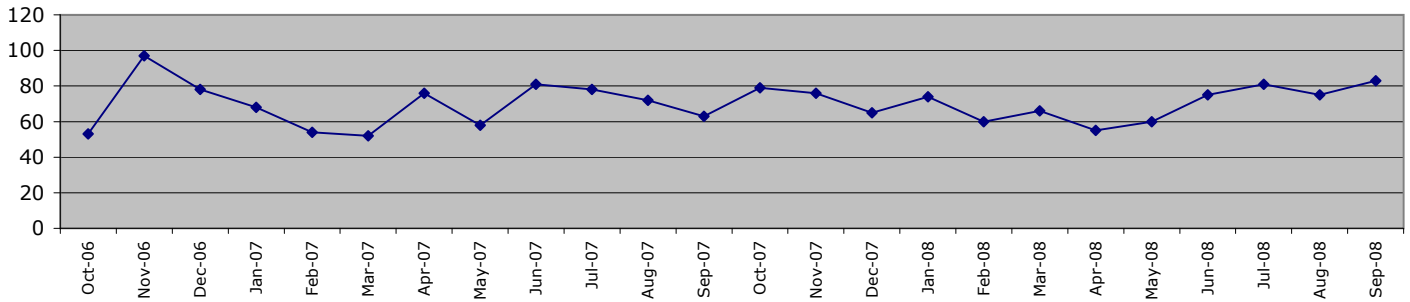
Sexual offender reoffending rate

This indicator was contained within the draft APACS/National Indicator Set measures, however following national consultation this was removed from both sets. Hampshire has not yet identified how this target will be measured in the absence of technical guidance.

Protect our communities

Road traffic casualties

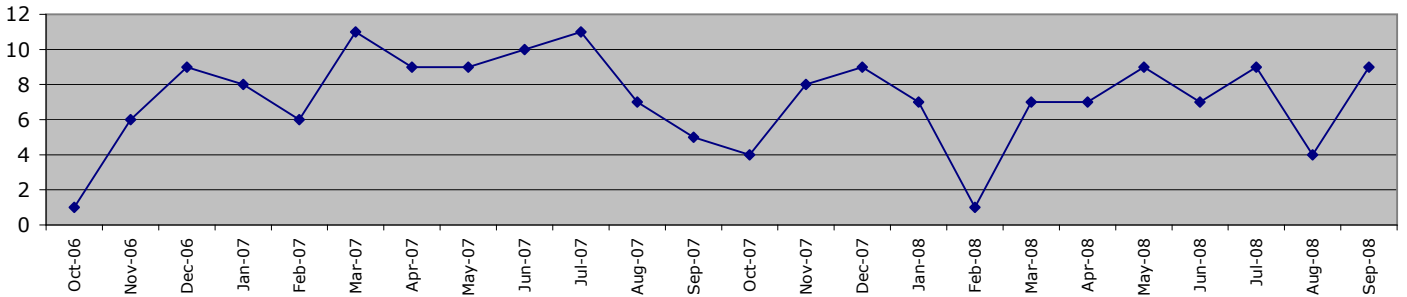
Fatal/serious injury casualties - all victims



The Force target 2008/2009 is for less than 938 casualties, which equates to less than 470 in 183 days YTD Sept 2008 = 429 casualties

	Central	Isle of Wight	North&East	Portsmouth	Southampton	Western	Force
1 April 2008 - 30 September 2008	81	48	91	50	44	115	429
of these, fatals were	8	5	3	4	2	15	37
1 April 2007 - 30 September 2007	116	35	93	35	29	120	428

Fatal/serious injury casualties - victims under 16 years



The DETR target is for a 50% reduction in child casualties by 2010 from 164 to 82 (Target 2008/2009 = 94)

	Central	Isle of Wight	North&East	Portsmouth	Southampton	Western	Force
1 April 2008 - 30 September 2008	8	7	8	6	8	8	45
of these, fatals were	0	0	0	0	0	2	2
1 April 2007 - 30 September 2007	11	4	8	14	4	10	51

Note: YTD numbers may change as the accident record data are updated each month

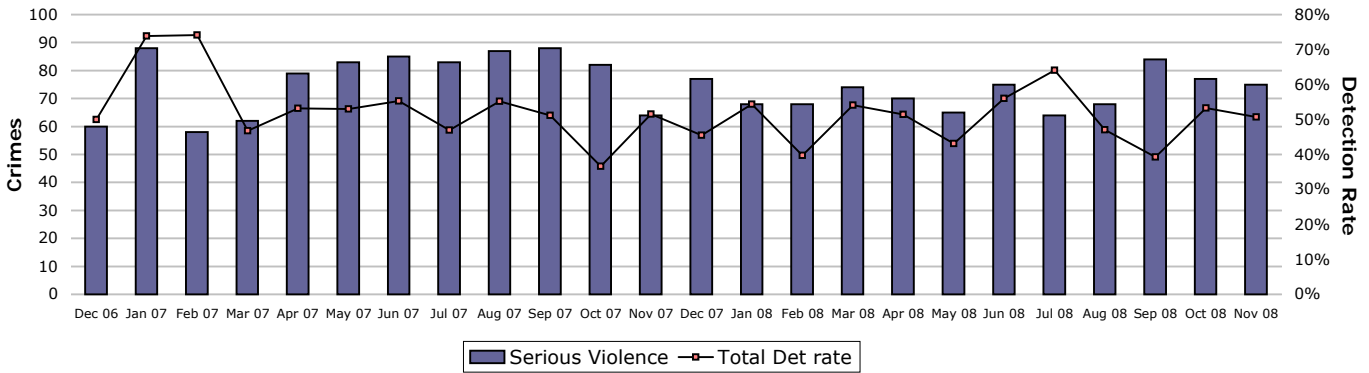
Note: The casualties in East Hampshire have all been attributed to North & East OCU in the absence of a breakdown by OCUs

NOTE: 8 Operations OCU are currently unable to provide casualty data due to the change in recording systems and difficulties obtaining data in a format consistent with previous reporting. It is hoped that this will be resolved in time for next month

Prevent, reduce and detect crime

Serious violent crime

Serious violent crime consists of crimsec codes 1, 2, 4.1-4.4, 4.6, 4.8, 5A, 5B, 5C, 8F, 8H and 37.1

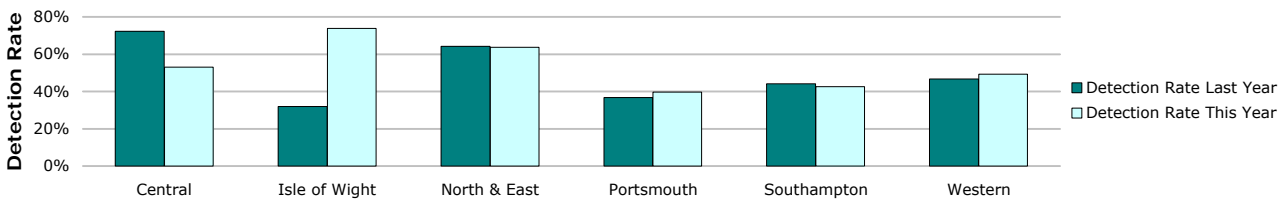


Crimes	Central	Isle of Wight	North & East	Portsmouth	Southampton	Western	Force
YTD Crimes	128	42	80	101	160	67	578
YTD Target	102	55	98	113	166	52	585
YTD 07/08 Crimes	119	50	106	128	186	62	651
This month	15	4	13	15	20	8	75
% change from 07/08	7.56%	-16.00%	-24.53%	-21.09%	-13.98%	8.06%	-11.21%
MSG position	9 of 15	7 of 15	7 of 15	2 of 15	13 of 15	4 of 15	5 of 8



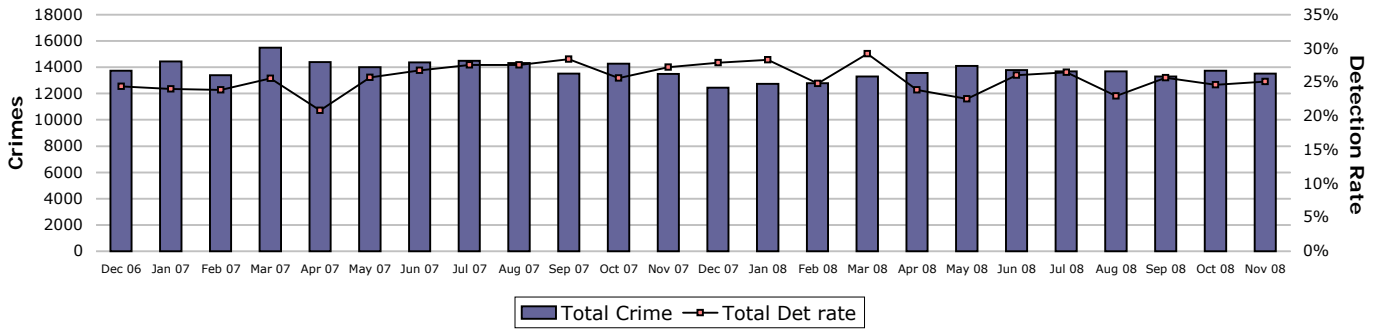
Detections	Central	Isle of Wight	North & East	Portsmouth	Southampton	Western	Force
Target >50%							
YTD Detection Rate	53.13%	73.81%	63.75%	39.60%	42.50%	49.25%	50.35%
This month	33.33%	75.00%	84.62%	33.33%	50.00%	50.00%	50.67%
YTD 07/08 Detections	72.27%	32.00%	64.15%	36.72%	44.09%	46.77%	50.38%
MSG position	4 of 15	3 of 15	4 of 15	4 of 9	5 of 15	2 of 15	2 of 8

Note: Detections refer to Sanction Detections ONLY



Prevent, reduce and detect crime

All crime

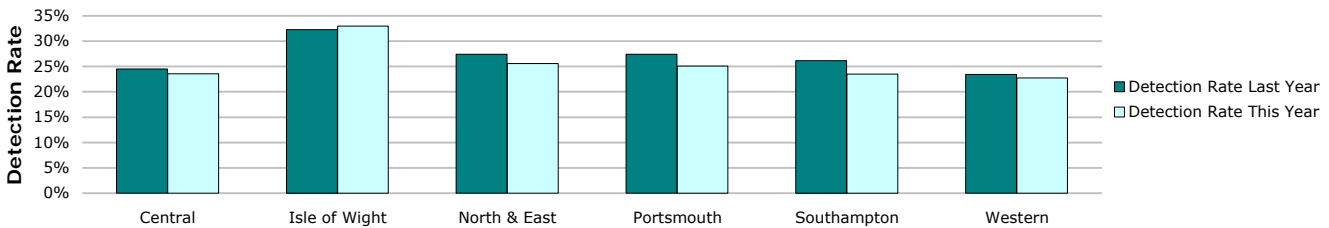


Crimes	Central	Isle of Wight	North & East	Portsmouth	Southampton	Western	Force
YTD Crimes	22203	7402	20622	16865	22693	19578	109363
YTD Target	21875	7394	20085	16567	22604	18427	106952
YTD 07/08 Crimes	22634	7986	20792	17483	23992	19976	112863
This month	2852	771	2491	2166	2856	2372	13508
% change from 07/08	-1.90%	-7.31%	-0.82%	-3.53%	-5.41%	-1.99%	-3.10%
MSG position	12 of 15	11 of 15	12 of 15	7 of 9	14 of 15	10 of 15	7 of 8



Detections	Central	Isle of Wight	North & East	Portsmouth	Southampton	Western	Force
Target >25%							
YTD Detection Rate	23.55%	32.96%	25.57%	25.08%	23.48%	22.73%	24.64%
This month	22.58%	39.43%	26.54%	22.67%	24.19%	25.17%	25.08%
YTD 07/08 Detections	24.51%	32.31%	27.39%	27.44%	26.13%	23.41%	26.20%
MSG position	13 of 15	4 of 15	11 of 15	3 of 9	12 of 15	15 of 15	5 of 8

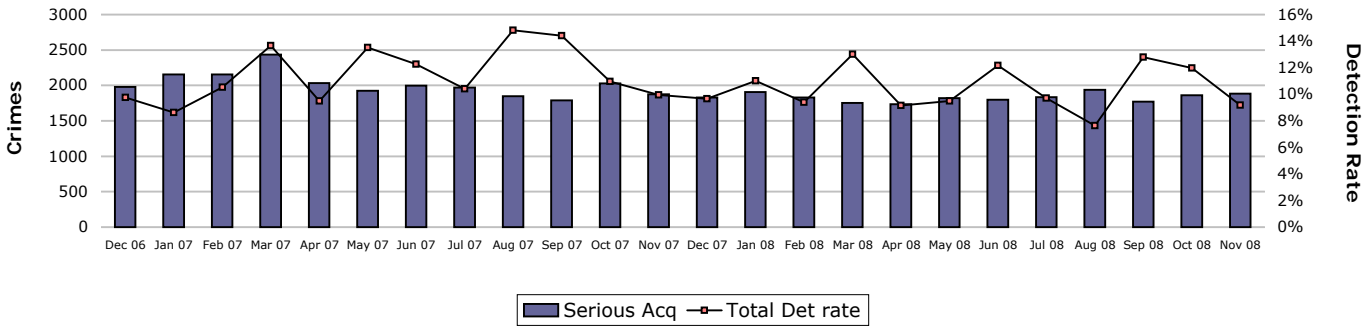
Note: Detections refer to Sanction Detections ONLY



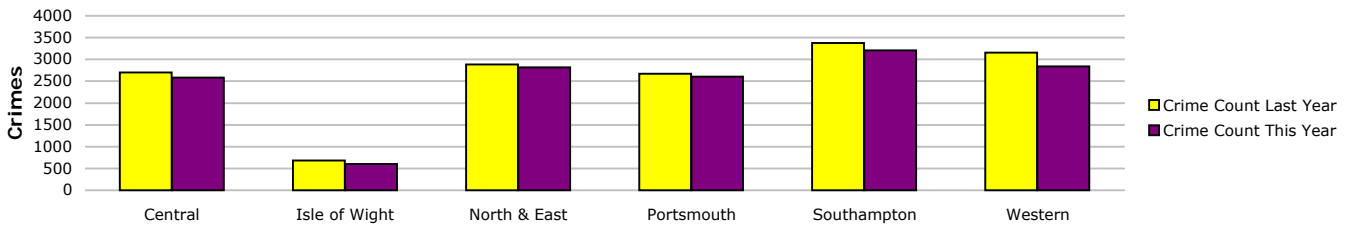
Prevent, reduce and detect crime

Serious acquisitive crime

Serious acquisitive crime consists of crimsec codes 28, 29, 34A, 34B, 37/2, 45 and 48

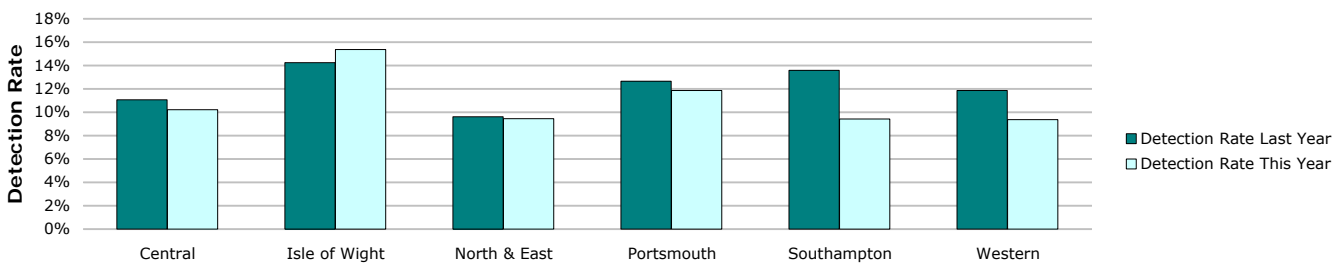


Crimes	Central	Isle of Wight	North & East	Portsmouth	Southampton	Western	Force
YTD Crimes	2581	605	2818	2603	3204	2840	14651
YTD Target	2647	635	2924	2453	3327	2971	14956
YTD 07/08 Crimes	2701	681	2887	2668	3373	3155	15465
This month	326	61	360	349	426	363	1885
% change from 07/08	-4.44%	-11.16%	-2.39%	-2.44%	-5.01%	-9.98%	-5.26%
MSG position	3 of 15	1 of 15	7 of 15	5 of 9	5 of 15	9 of 15	2 of 8



Detections	Central	Isle of Wight	North & East	Portsmouth	Southampton	Western	Force
Target >15%							
YTD Detection Rate	10.23%	15.37%	9.44%	11.87%	9.43%	9.37%	10.24%
This month	9.82%	22.95%	12.78%	6.88%	8.22%	6.06%	9.18%
YTD 07/08 Detections	11.07%	14.24%	9.63%	12.67%	13.58%	11.85%	11.92%
MSG position	11 of 15	6 of 15	14 of 15	3 of 9	13 of 15	11 of 15	6 of 8

Note: Detections refer to Sanction Detections ONLY



Prevent, reduce and detect crime

Serious acquisitive crime breakdown

Robbery

Year to date	Central	Isle of Wight	North & East	Portsmouth	Southampton	Western	Force
Crimes	74	10	104	156	305	113	762
Trigger point	90	33	98	149	229	100	699
07/08 crimes	102	33	100	161	252	95	743
% change from 07/08	-27.45%	-69.70%	4.00%	-3.11%	21.03%	18.95%	2.56%

Detection rate	32.43%	30.00%	22.12%	8.97%	14.75%	24.78%	17.98%
----------------	--------	--------	--------	-------	--------	--------	--------

November 2008	Central	Isle of Wight	North & East	Portsmouth	Southampton	Western	Force
Crimes	13	1	12	22	42	17	107
Detection rate	61.54%	0.00%	25.00%	9.09%	4.76%	11.76%	15.89%

Dwelling burglary

Year to date	Central	Isle of Wight	North & East	Portsmouth	Southampton	Western	Force
Crimes	720	210	881	907	610	666	3994
Trigger point	631	181	704	669	648	601	3435
07/08 crimes	621	208	678	729	627	623	3486
% change from 07/08	15.94%	0.96%	29.94%	24.42%	-2.71%	6.90%	14.57%

Detection rate	12.50%	24.76%	14.87%	14.99%	21.31%	18.32%	16.55%
----------------	--------	--------	--------	--------	--------	--------	--------

November 2008	Central	Isle of Wight	North & East	Portsmouth	Southampton	Western	Force
Crimes	104	19	120	130	75	93	541
Detection rate	8.65%	47.37%	26.67%	6.92%	14.67%	8.60%	14.42%

Vehicle crime

Year to date	Central	Isle of Wight	North & East	Portsmouth	Southampton	Western	Force
Theft of crimes	391	90	487	366	534	406	2274
Theft from crimes	1396	295	1346	1174	1755	1655	7621
Total vehicle crimes	1787	385	1833	1540	2289	2061	9895
Trigger point	1925	421	2121	1634	2449	2269	10819
07/08 crimes	1978	440	2109	1778	2494	2437	11236
% change from 07/08	-9.66%	-12.50%	-13.09%	-13.39%	-8.22%	-15.43%	-11.93%

Detection rate	8.39%	9.87%	6.11%	10.32%	5.55%	5.63%	7.09%
----------------	-------	-------	-------	--------	-------	-------	-------

November 2008	Central	Isle of Wight	North & East	Portsmouth	Southampton	Western	Force
Theft of crimes	49	8	62	43	67	44	273
Theft from crimes	160	33	166	154	242	209	964
Total vehicle crimes	209	41	228	197	309	253	1237
Detection rate	7.18%	12.20%	4.82%	6.60%	7.12%	4.74%	6.31%

Robbery, burglary and vehicle crime are the component parts of serious acquisitive crime. These individual crime types do not have targets. Trigger points are included here; these add up to the serious acquisitive target and are calculated based on the breakdown of these crimes in 07/08.

Prevent, reduce and detect crime

Gun crime rate

	Central	Isle of Wight	North & East	Portsmouth	Southampton	Western	Force
YTD November 2008	20	2	23	12	17	15	89
YTD November 2007	18	8	23	13	16	13	91
% change from 07/08	11.1%	-75.0%	0.0%	-7.7%	6.3%	15.4%	-2.2%

Gun crime figures published reflect the APACS technical definition for 2008/09 which differs from that used in 2007/08. Manual checking has been undertaken to try to provide comparative 2007/08 figures, however it is not possible to provide completed comparable figures. In 2008/09 gun crime includes "where the victim is convinced of the presence of a firearm, even if it is concealed and there is evidence of the suspect's intention to create this impression"; these occurrences were not included in previously published 2007/08 data.

Knife crime rate

	Central	Isle of Wight	North & East	Portsmouth	Southampton	Western	Force
YTD November 2008	98	21	88	78	152	63	500
YTD November 2007	95	22	100	121	148	61	547
% change from 07/08	3.2%	-4.5%	-12.0%	-35.5%	2.7%	3.3%	-8.6%

Knife = knife or other sharp instrument (including broken glass/bottles) piercing the skin or, for threats and attempts, instruments normally capable of piercing the skin

Knife crime figures published reflect the APACS technical definition for 2008/09 which differs from that used in 2007/08. Manual checking has been undertaken to try to provide comparative 2007/08 figures, however it is not possible to provide completed comparable figures. In 2008/09 knife crime includes "where the victim is convinced of the presence of a knife, even if it is concealed and there is evidence of the suspect's intention to create this impression"; these occurrences were not included in previously published 2007/08 data.

Serious sexual crime OBJ rate

The table below shows the percentage of persons brought to justice for serious sexual crimes against the total number of serious sexual crimes

OBJT Crime category	OBJT Rate					
	Apr 2008	May 2008	Jun 2008	Jul 2008	Aug 2008	Rolling average
Tier 1: Serious Sexual Offences	36%	14%	53%	36%	35%	34%

Murder offences

2008/2009 target = <16 murder offences

	Central	Isle of Wight	North & East	Portsmouth	Southampton	Western	Force
YTD November 2008	1	0	1	1	3	1	7
YTD November 2007	3	0	3	4	2	2	14
% change from 07/08							-50.0%

For more information, please go to the Specialist Operations - 7 OCU page

Asset recovery

Asset recovery is the sum total of the values of cash forfeitures and confiscation orders

	Central	Isle of Wight	North & East	Portsmouth	Southampton	Western	Force
April 2008	£38,187.90	£0.00	£18,413.50	£0.00	£0.00	£0.00	£56,601.40
May 2008	£0.00	£0.00	£0.00	£0.00	£69,735.00	£0.00	£69,735.00
June 2008	£76,739.37	£0.00	£146,538.50	£0.00	£8,676.00	£4,693.00	£236,646.87
July 2008	£0.00	£0.00	£0.00	£1,104.00	£2,035.00	£2,100.00	£5,239.00
August 2008	£0.00	£0.00	£22,699.60	£0.00	£15,469.55	-£19,520.00	£18,649.15
September 2008	£0.00	£0.00	£1,175.00	£4,447.95	£221,549.03	£21,427.00	£248,598.98
October 2008	£9,273.38	£1,956.76	£60,660.00	£5,400.00	£0.00	£0.00	£77,290.14
November 2008	£0.00	£7,930.00	£1,710.00	£1,250.00	£22,012.77	£0.00	£32,902.77
Cumulative total	£124,200.65	£9,886.76	£251,196.60	£12,201.95	£339,477.35	£8,700.00	£745,663.31

Prolific and other Priority Offenders (PPOs) convictions

Number of convictions recorded against identified, prolific and other priority offenders

Convictions	Jul 2008	Aug 2008	Sep 2008	Oct 2008
Persistent Young Offenders	122	No data	74	86
Priority Prolific Offenders	18	No data	20	35
Persistent Priority Prolific Young Offenders	1	No data	2	1
Young Offenders	209	No data	194	156

Note: The August 2008 data is not available due to issues with the Criminal Justice Management Information System (CJMIS)

Class A drugs sanction detections

	Central	Isle of Wight	North & East	Portsmouth	Southampton	Western	YTD November 2008 target			267
							Crime	Operations	No OIC	Force
YTD November 2008	13	36	50	20	55	39	35	1	4	253
YTD November 2007	29	19	46	18	22	13	26	7	10	190

Drug Intervention Measures (DIMs)

	Central	Isle of Wight	North & East	Portsmouth	Southampton	Western	Crime	Force
YTD November 2008	No data received							0
YTD November 2007	4	16	52	5	28	12	0	117
% change from 07/08	No data received							0

Prevent, reduce and detect crime

Note: The large variance between YTD 2007 and YTD 2008 is partially due to changes in the process for submissions up until Sept 07

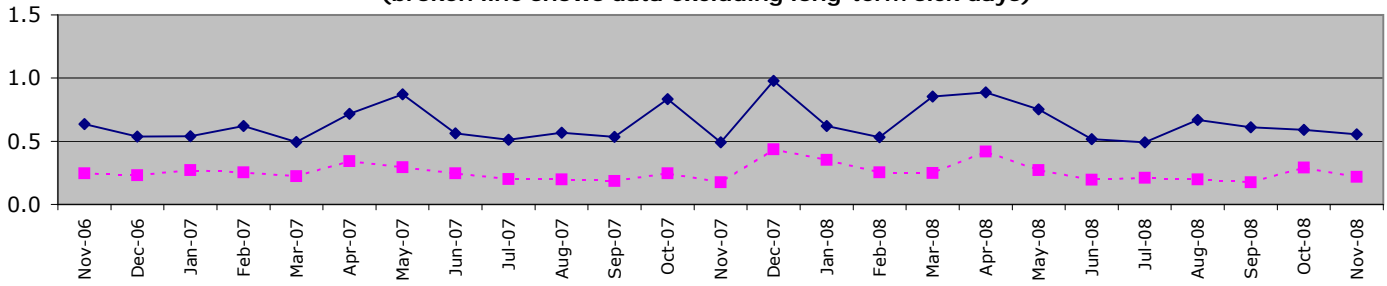
Organisational management

All Police officer sickness YTD = **5.10**

All Police officer sickness Nov = **0.58**

Police officers in OCUs

**Sickness and injury absence days per officer by month
(broken line shows data excluding long-term sick days)**

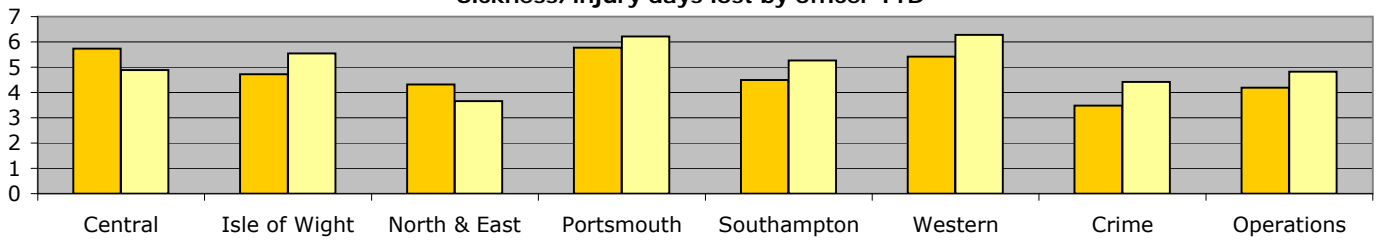


Force target for 08/09 = 7.5 days or fewer per officer (5 for 8 months) **YTD = 5.07 days lost per officer**

	Central	Isle of Wight	North & East	Portsmouth	Southampton	Western	Crime	Operations	OCU Totals
YTD Apr 08 - November 08	4.88	5.55	3.66	6.21	5.26	6.28	4.41	4.82	5.07
YTD Apr 07 - November 07	5.73	4.72	4.32	5.78	4.50	5.42	3.48	4.18	4.82
This month	0.48	0.55	0.32	0.50	0.64	0.92	0.64	0.40	0.55
% change	-14.9%	17.6%	-15.4%	7.5%	17.0%	16.0%	26.8%	15.2%	5.4%

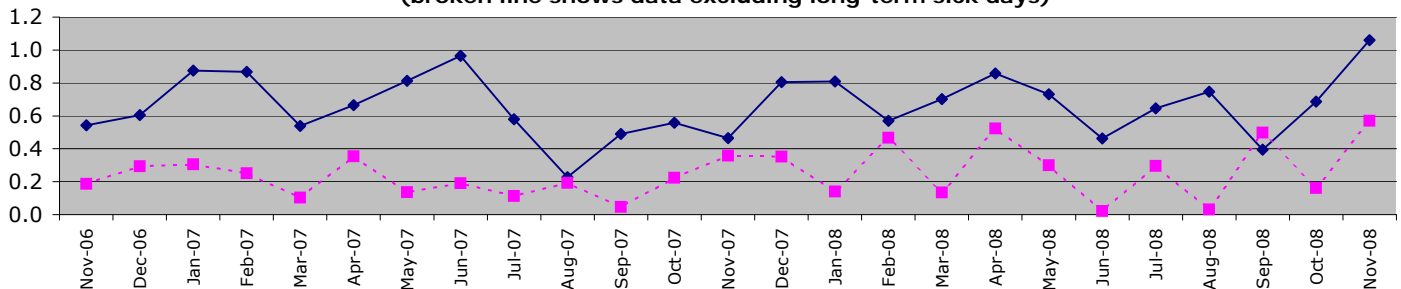
"Operations" includes SO Portfolio and Projects Staff

Sickness/injury days lost by officer YTD



Police officers not in OCUs

**Sickness and injury absence days per police officer by month
(broken line shows data excluding long-term sick days)**

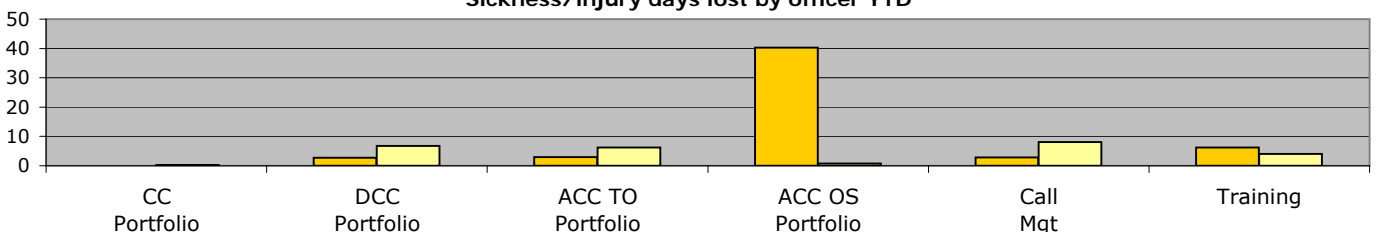


Force target for 08/09 = 7.5 days or fewer per officer (5 for 8 months) **YTD = 5.58 days lost per officer**

	CC Portfolio	DCC Portfolio	ACC TO Portfolio	ACC OS Portfolio	DoF Portfolio	Call Mgt	Training	Non-OCU Totals
YTD Apr 08 - November 08	0.18	6.78	6.19	0.74	0.00	8.10	4.04	5.58
YTD Apr 07 - November 07	0.00	2.72	3.00	40.33	0.00	2.81	6.24	4.93
This month	0.00	1.83	1.14	0.11	0.00	0.78	0.89	1.06
% change	N/A	148.8%	106.4%	-98.2%	N/A	188.0%	-35.2%	13.2%

ACC OS Portfolio excludes Call Mgt & Training figures which are reported on separately. No police officers work within DoF Portfolio.

Sickness/injury days lost by officer YTD



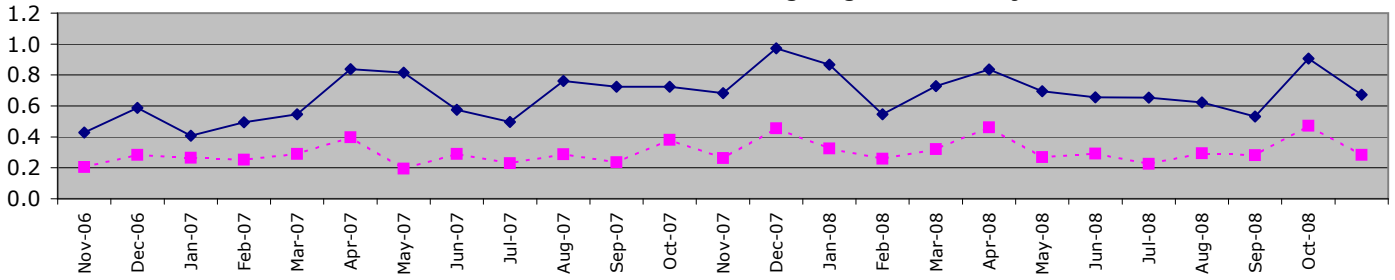
Organisational management

All Police staff sickness YTD = **5.46**

All Police staff sickness Oct = **0.57**

Police staff in OCU's

**Sickness and injury absence days per police staff member by month
(broken line shows data excluding long-term sick days)**

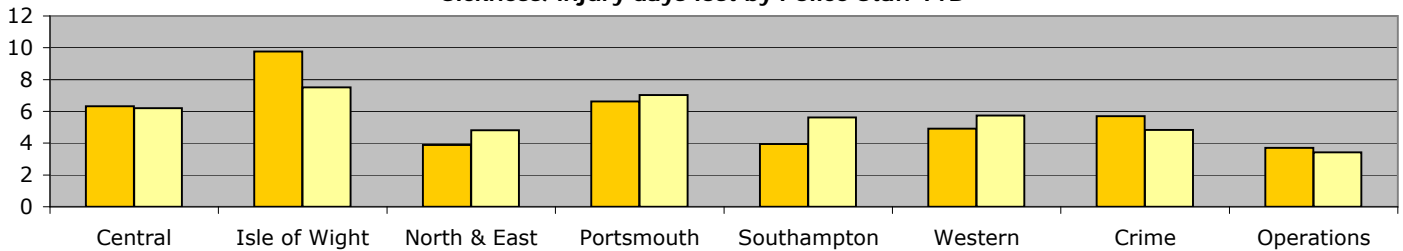


Force target for 08/09 = 7.5 days or fewer per staff (5 for 8 months) **YTD = 5.57 days lost per staff member**

	Central	Isle of Wight	North & East	Portsmouth	Southampton	Western	Crime	Operations	OCU Totals
YTD Apr 08 - November 08	6.20	7.51	4.81	7.02	5.62	5.74	4.82	3.42	5.57
YTD Apr 07 - November 07	6.32	9.76	3.88	6.63	3.94	4.90	5.70	3.70	5.43
This month	0.47	1.34	0.71	1.15	-0.09	0.50	0.78	0.02	0.59
% change	-1.8%	-23.1%	23.7%	6.0%	42.6%	17.2%	-15.4%	-7.4%	2.7%

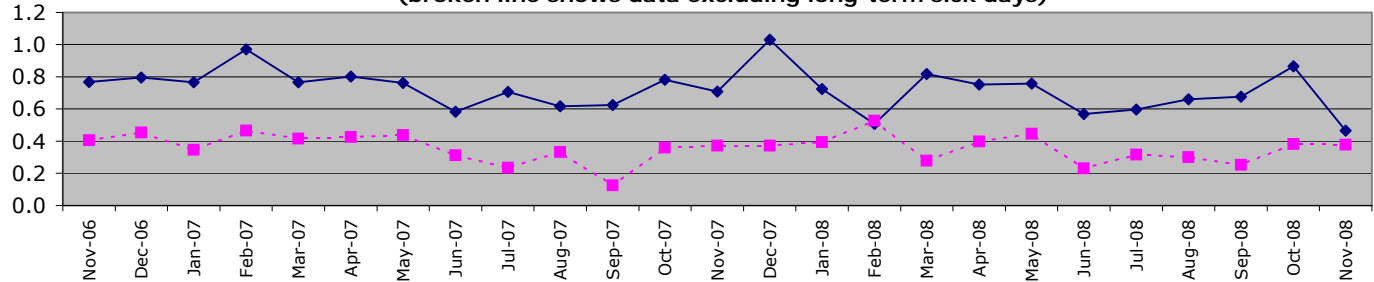
"Operations" includes SO Portfolio and Projects Staff

Sickness/injury days lost by Police Staff YTD



Police staff not in OCU's

**Sickness and injury absence days per police staff member by month
(broken line shows data excluding long-term sick days)**



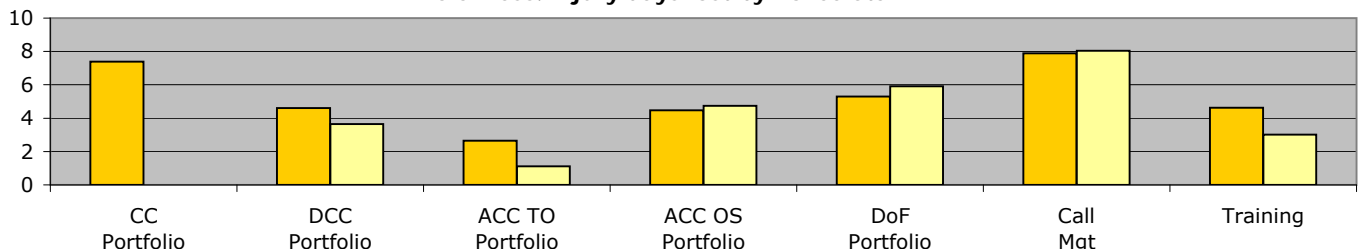
Force target for 08/09 = 7.5 days or fewer per staff (5 for 8 months) **YTD = 5.35 days lost per staff member**

	CC Portfolio	DCC Portfolio	ACC TO Portfolio	ACC OS Portfolio	DoF Portfolio	Call Mgt	Training	Non-OCU Totals
YTD Apr 08 - November 08	0.00	3.64	1.11	4.74	5.92	8.03	3.02	5.35
YTD Apr 07 - November 07	7.38	4.61	2.65	4.48	5.29	7.89	4.63	5.64
This month	0.00	0.68	0.86	0.55	0.87	0.89	0.38	0.71
% change	-100.0%	-21.1%	-58.0%	5.8%	11.9%	1.8%	-34.8%	-5.2%

ACC OS Portfolio excludes Call Mgt & Training figures which are reported on separately.

104 156 205 112 767

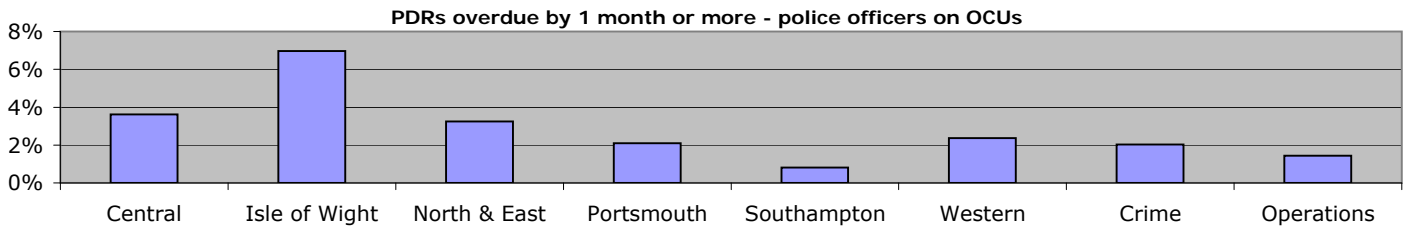
Sickness/injury days lost by Police Staff YTD



Organisational management

Overdue PDRs

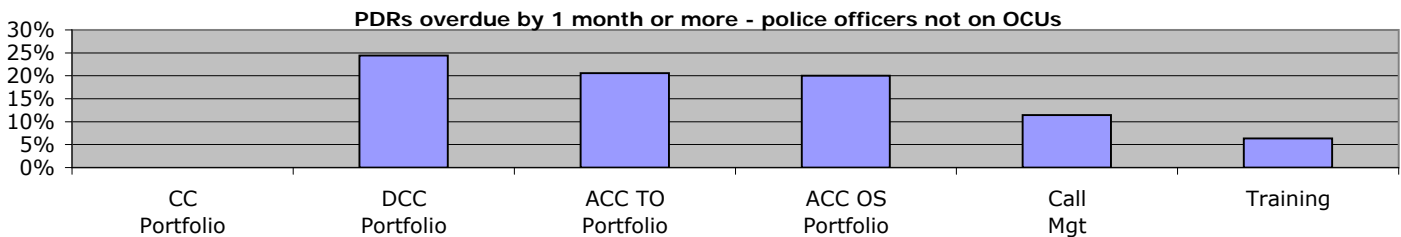
Police officer PDRs - police officers in OCUs



November 2008	Central	Isle of Wight	North & East	Portsmouth	Southampton	Western	Crime	Operations
Population	634	215	553	429	490	506	442	419
Overdue	23	15	18	9	4	12	9	6
% overdue	3.6%	7.0%	3.3%	2.1%	0.8%	2.4%	2.0%	1.4%

"Operations" includes SO Portfolio and Projects Staff

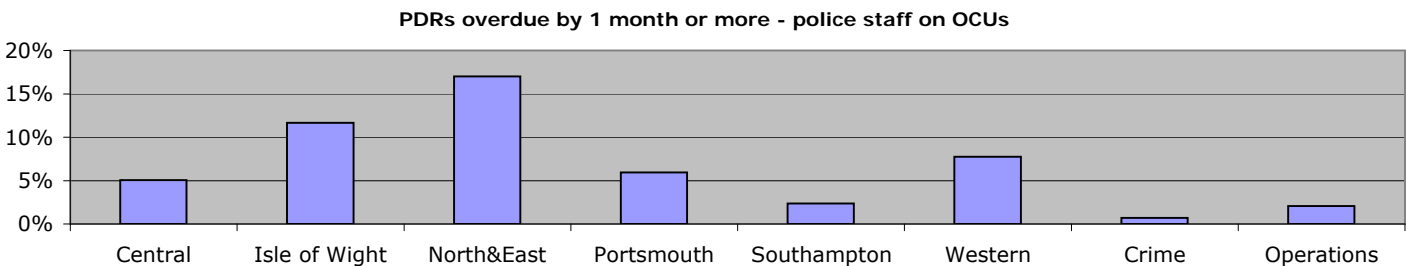
Police officer PDRs - police officers not on OCUs



November 2008	CC Portfolio	DCC Portfolio	ACC TO Portfolio	ACC OS Portfolio	DoF Portfolio	Call Mgt	Training
Population	8	41	34	10	N/A	35	63
Overdue	0	10	7	2	N/A	4	4
% overdue	0.0%	24.4%	20.6%	20.0%	N/A	11.4%	6.3%

ACC OS Portfolio excludes Call Mgt & Training figures which are reported on separately. No police officers work within DoF Portfolio

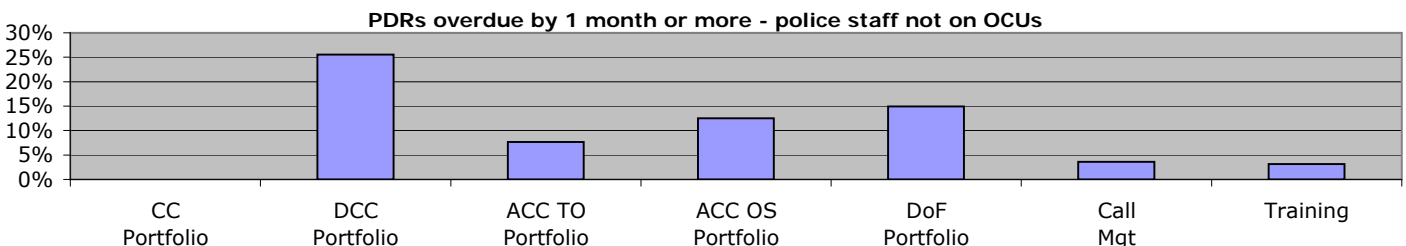
Police staff PDRs - police staff in OCUs



November 2008	Central	Isle of Wight	North&East	Portsmouth	Southampton	Western	Crime	Operations
Population	238	103	200	185	213	206	292	145
Overdue	12	12	34	11	5	16	2	3
% overdue	5.0%	11.7%	17.0%	5.9%	2.3%	7.8%	0.7%	2.1%

"Operations" includes SO Portfolio and Projects Staff

Police staff PDRs - police staff not in OCUs



November 2008	CC Portfolio	DCC Portfolio	ACC TO Portfolio	ACC OS Portfolio	DoF Portfolio	Call Mgt	Training
Population	2	329	39	432	147	417	96
Overdue	0	84	3	54	22	15	3
% overdue	0.0%	25.5%	7.7%	12.5%	15.0%	3.6%	3.1%

ACC OS Portfolio excludes Call Mgt & Training figures which are reported on separately

Organisational management

Minority Ethnic Officer Recruitment

	All recruits	Minority ethnic recruits	%
YTD November 2008	65	1	1.5%

Female Officer Representation

	Male strength	Female strength	%
YTD November 2008	2770.1	1022.6	27.0%

NCRS compliance

	Central	Isle of Wight	North & East	Portsmouth	Southampton	Western	Crime
NCRS audits	Fair 82%	Fair 82%	Fair 84%	Poor 72%	Poor 64%	Fair 85%	No data

Note: NCRS audit data relates to a rolling 12 mth period

Self-Inspection	91.0%	85.0%	80.0%	66.0%	81.0%	90.0%	No data
-----------------	-------	-------	-------	-------	-------	-------	---------

Note: Self-Inspections - only appealed records are moderated by the Force Crime Registrar

Budget spend

The actual spend to the end of October 2008 was £163.6m. This gives a projected spend for the force at the end of the financial year of £294.3m, which will be an overspend of £1.8m against the agreed budget.

The force is taking measures to eliminate this overspend during the course of the current financial year.

	Central	Isle of Wight	North & East	Portsmouth	Southampton	Western	Crime	Operations
Projected overspend 2008/2009	-£70,000	-£86,000	£643,000	£737,000	-£10,000	-£132,000	£257,000	£440,000

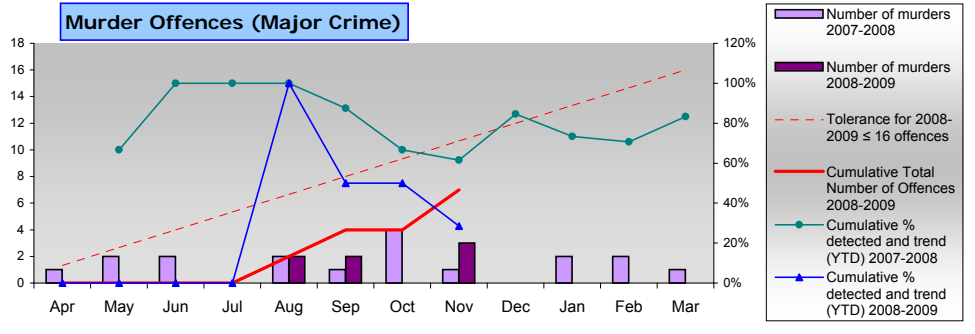
Efficiency savings

The Authority needs to maximise efficiency gains both due to its budgetary constraints and in order to achieve value for money. In addition, there is a Home Office target to deliver recurring efficiency or productivity gains equivalent to 9.3% (some £30m) of the Authority's 2007/08 'Gross Revenue Expenditure' by the end of 2010/11. The Authority and Force are working to achieve, and if possible exceed, the target through initiatives identified and monitored by the Efficiency Strategy Group.

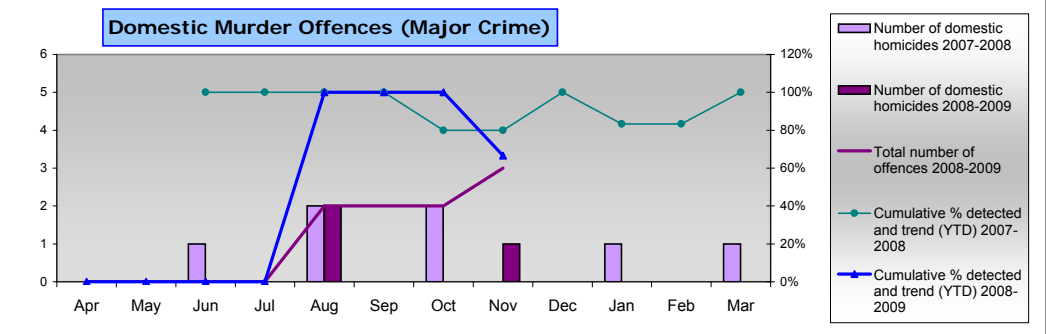
An efficiency saving register that is used as a tracking tool is now monitoring progress of ongoing efficiency initiatives valued at £15.6m across the current and future financial years. Some of the initiatives listed are not in a position yet to quantify the potential efficiency savings deliverable. It will be seen that there are also a number of initiatives listed on the register which are only at the start up stage of the project life cycle and are unlikely to deliver productivity gains within the required timeframe: they are nonetheless important as efficiency is an ongoing long term requirement.

Specialist Operations - 7 OCU

Murder Offences (Major Crime)



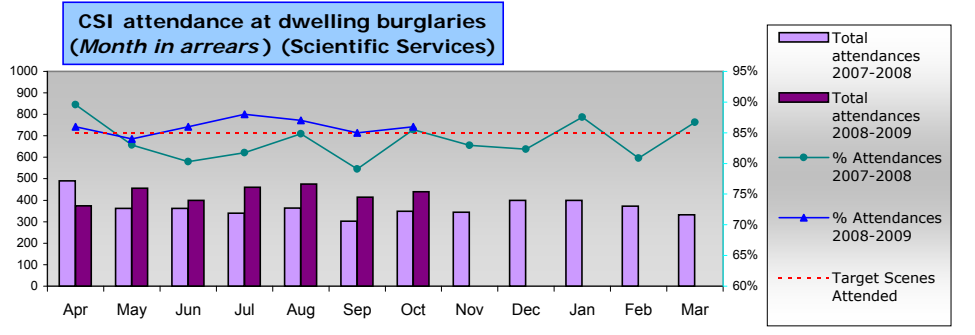
Domestic Murder Offences (Major Crime)



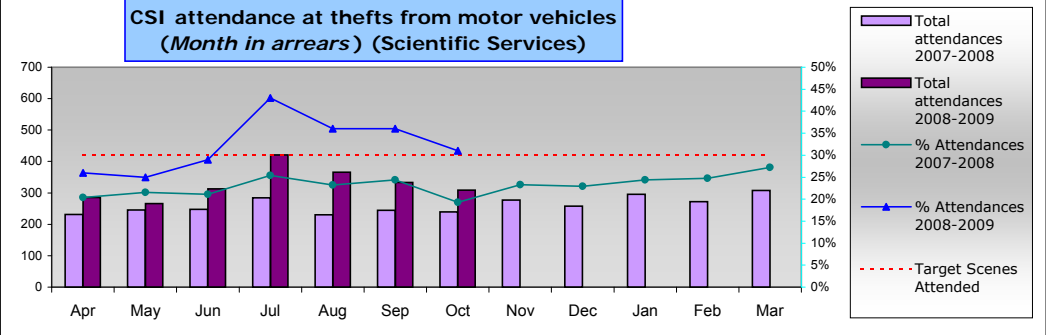
All murder offences this year compared to last year and detection rates
 The target is no more than 16 offences for the current year
 Detection target for murder is 100%

Domestic murder offences this year compared to last year and detection rates
 Detection target for murder is 100%

CSI attendance at dwelling burglaries (Month in arrears) (Scientific Services)



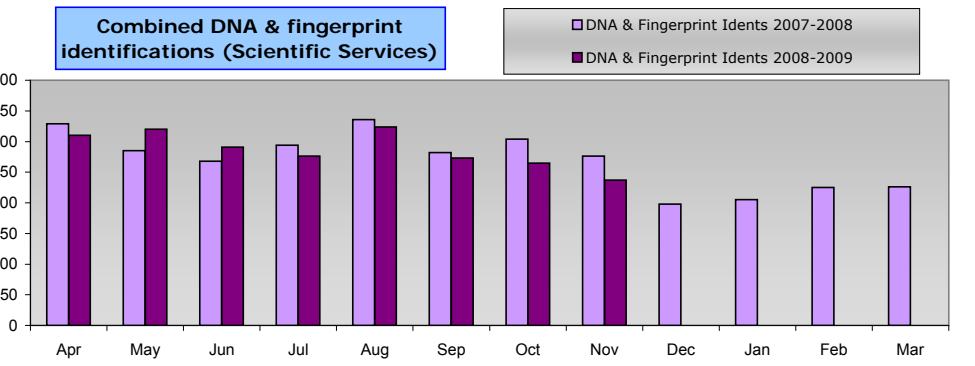
CSI attendance at thefts from motor vehicles (Month in arrears) (Scientific Services)



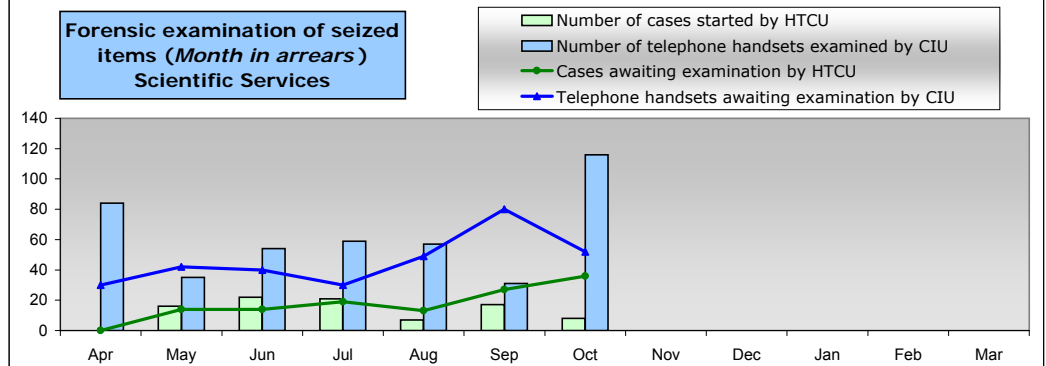
Burglary dwelling scene attendance rates. Target is no less than 85%

Theft from motor vehicle scene attendance rates. Target is no less than 30%

Combined DNA & fingerprint identifications (Scientific Services)



Forensic examination of seized items (Month in arrears) Scientific Services

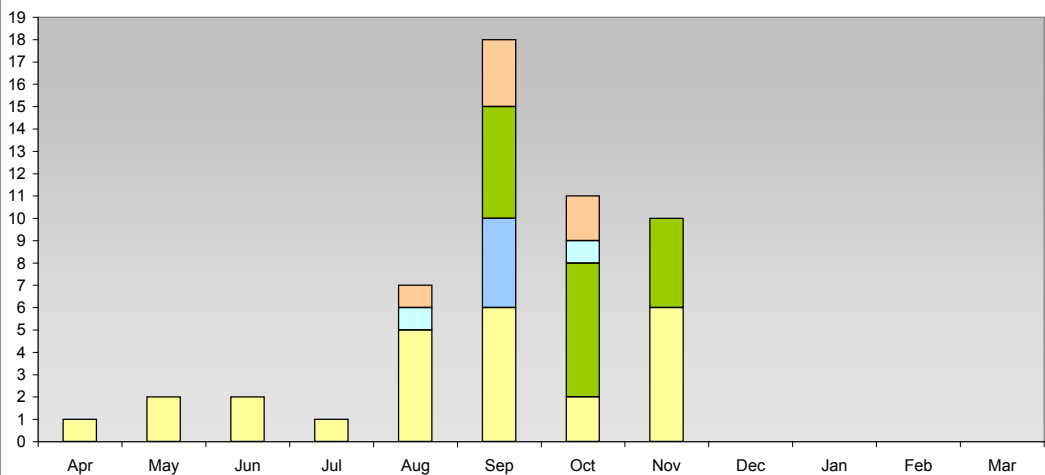
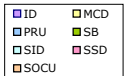


Combined DNA & fingerprint identifications this year compared to last year

Number of cases started & cases awaiting examination by HTC
 NB: Cases include all computing equipment not just computers (eg monitors, drives, etc...)

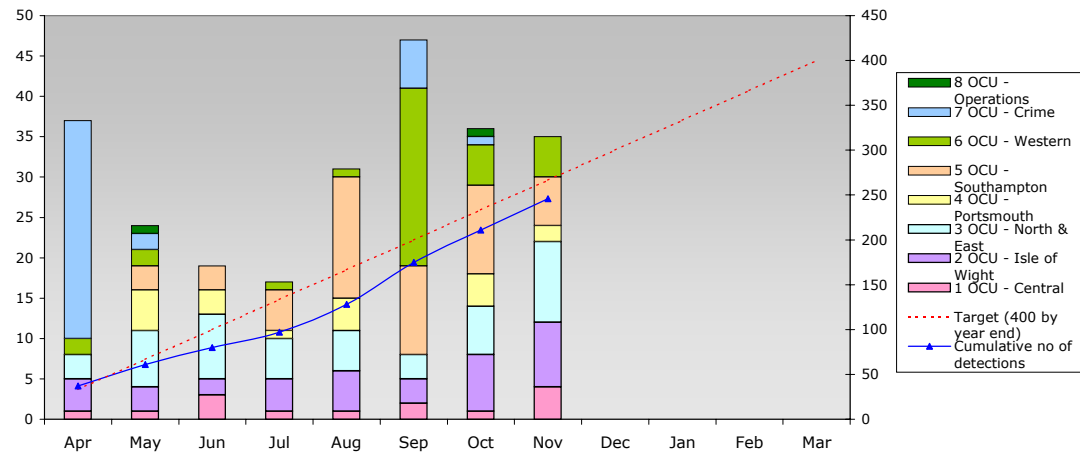
Number of telephone handsets examined & telephone handsets awaiting examination by CIU

Major incidents showing 'SO' units providing assistance/resources provided to 'TO'



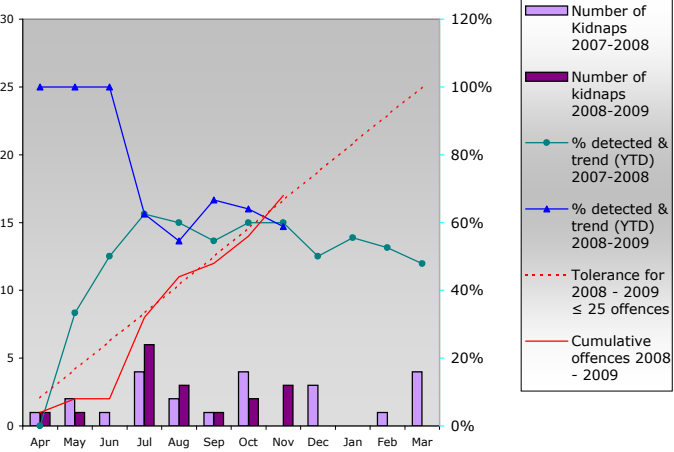
Serious/major incidents where 'SO' expertise or resources were utilised to assist or manage the investigation

Number of Class A drug supply detections



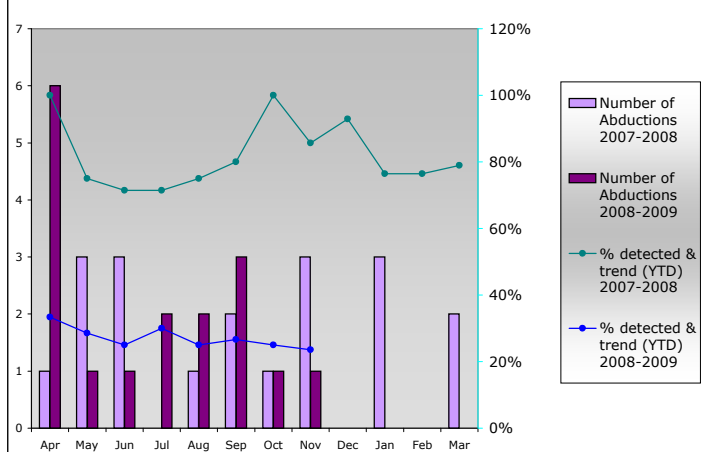
Number of detections for offences of Class A drug supply by month by OCU and total detections to date compared with Force target of 400 for year.

Kidnaps (Serious and Organised Crime Unit)



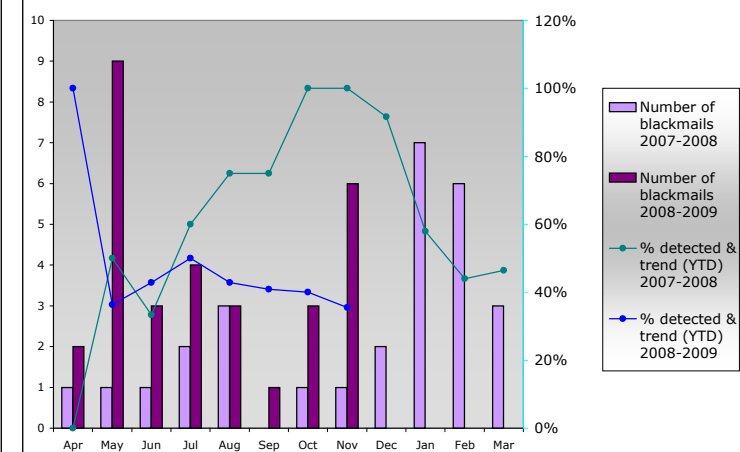
All kidnaps within force this year compared to last year and detection rates. Target for 2008/09 is no more than 25 offences (10% reduction on 2007/08)

Abductions (Serious and Organised Crime Unit)



All abductions within force this year compared to last year and detection rates

Blackmails (Serious and Organised Crime Unit)



All blackmails within force this year compared to last year and detection rates.

Specialist Operations - 8 OCU

8 OCU Commitment to Pre-Planned Operations - November 08

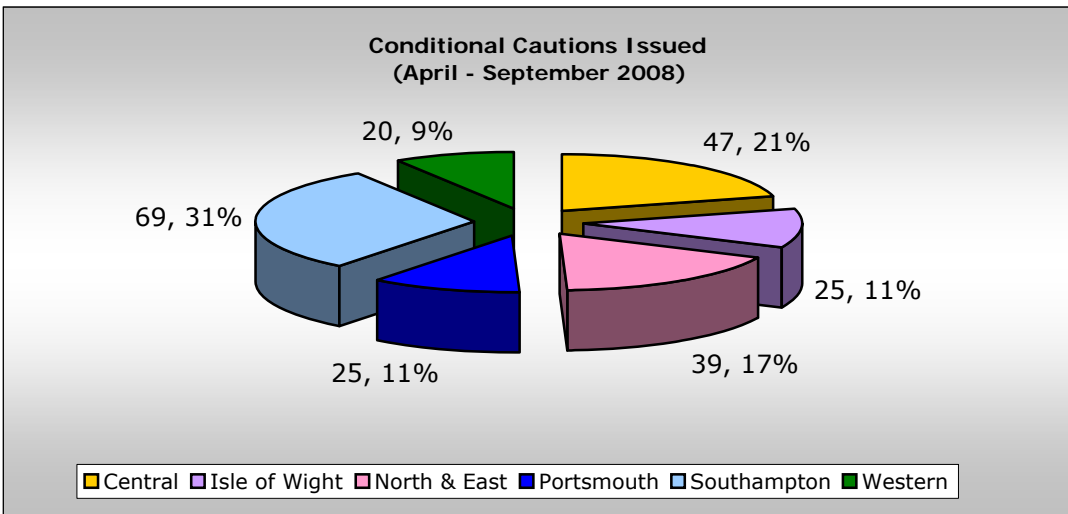
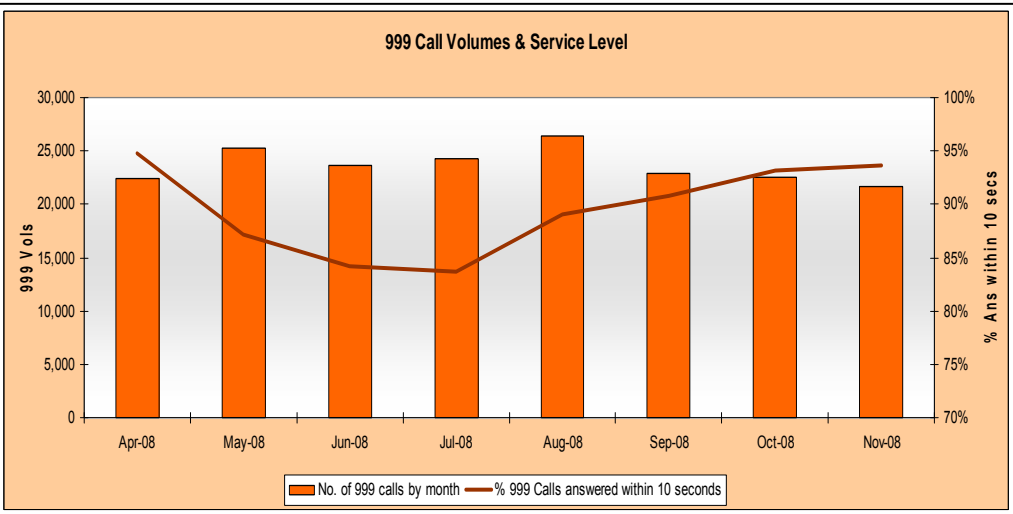
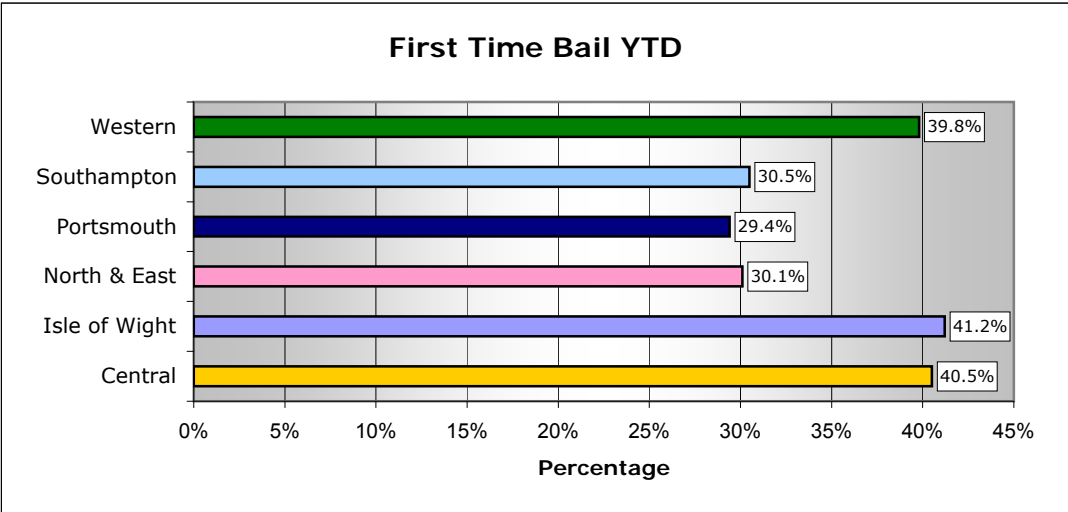
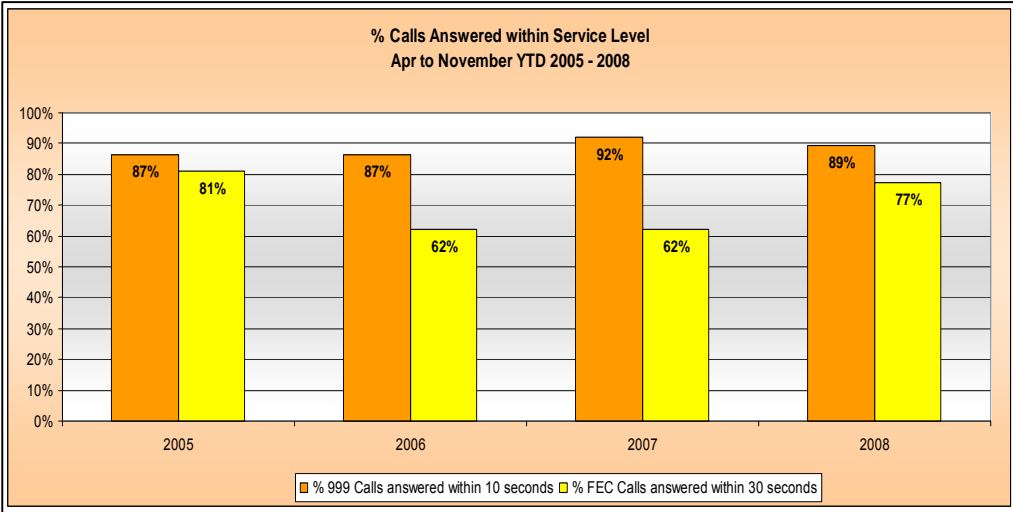
Op. Name	OCU Supported							Total
	1	2	3	4	5	6	Other	
Radon	0	0	0	0	0	0	0	0
Advasar	0	0	0	0	0	0	0	0
Cabot	0	1	0	0	0	0	0	1
Gilcrist	0	0	0	0	0	1	0	1
Rainbow	0	0	0	0	0	2	0	2
Op Selfridge	0	0	0	0	0	0	1	1
Op Custodian	0	0	0	0	1	1	0	2
Op Pennington	2	0	0	0	0	1	0	3
Kettering	0	0	0	0	0	0	0	0
Op Viper (VCS)	1	8	0	0	0	0	0	9
Op Elmoor (VCS)	0	0	0	0	4	0	0	4
Passive Ops	0	0	0	0	2	0	0	2
Cash Dog Ops	4	2	1	0	1	2	0	10
Drugs Warrants	10	2	8	2	15	7	0	44
Other	19	6	16	19	57	26	17	160
Total Ops.	36	19	25	21	80	40	18	239
Arrests	3	8	4	10	21	16	2	64
FPNs	13	69	3	12	16	21	1	135
Seizures	0	0	0	2	0	5	7	14
Other	20	8	24	58	126	57	5	298
Total Results	36	85	31	82	163	99	15	511

8 OCU Commitment to ANPR Operations - November 08

	OCU Supported							Total
	1	2	3	4	5	6	Other	
No. of Ops	11	2	2	8	2	7	4	36
Arrests	8	0	1	2	0	5	1	17
FPNs	38	2	0	19	0	40	0	99
Seizures	16	2	0	17	9	20	0	64
Other	42	6	9	27	24	6	13	127
Total	104	10	10	65	33	71	14	307

Operational Services

Issues of the month: Measuring **conditional cautions** since April 2008, we can see variation across the OCUs in the use of this disposal. **Bail rates** are shown Year to Date, demonstrating a large variance across force. Bail rates are reducing over time. This has no correlation to the OCUs' ability to secure a conviction. The November service level for **999 calls** was 93.64% which brings the YTD to 89.41% compared to a target of 90%. The **FEC** achieved a service level of 84.73%, the highest since April 2008.



Victim focus

Hampshire Constabulary has always valued victim care. With the introduction of the Policing Pledge, this section will be used not only to inform how we manage our victims of crime, but our progress and actions that relate to the Pledge.

Particular emphasis surrounds compliance with the Victims' Code - keeping people updated - and it is this area that is currently reported on. Other commitments from the Pledge will be periodically reported on.

APACS indicators for user satisfaction

iQuanta data for MSG for the 12 months up to June 2008

Crime type	MSG position	1 st in MSG
<u>Vehicle crime</u>		
Ease of contact	3/8	Hertfordshire
Actions taken	6/8	Hertfordshire
Follow up	6/8	Hertfordshire
Treatment	5/8	Hertfordshire
OVERALL	6/8	Hertfordshire
<u>Burglary</u>		
Ease of contact	2/8	Hertfordshire
Actions taken	1/8	Hampshire
Follow up	2/8	Sussex
Treatment	2/8	Hertfordshire
OVERALL	3/8	Hertfordshire
<u>Violent crime</u>		
Ease of contact	1/8	Hampshire
Actions taken	3/8	Essex
Follow up	5/8	Hertfordshire
Treatment	2/8	Hertfordshire
OVERALL	2/8	Sussex
<u>RTC</u>		
Ease of contact	2/8	Hertfordshire
Actions taken	2/8	Hertfordshire
Follow up	2/8	Hertfordshire
Treatment	2/8	Hertfordshire
OVERALL	2/8	Hertfordshire
<u>All users (excluding racist incidents)</u>		
Ease of contact	2/8	Hertfordshire
Actions taken	3/8	Hertfordshire
Follow up	2/8	Hertfordshire
Treatment	2/8	Hertfordshire
OVERALL	2/8	Hertfordshire

Victim Focus

Summary results of Dip-sample Victim Code Compliance checks (latest month for available data followed by YTD)

% where victim was informed within 5 days of an investigation being closed

	Central	Isle of Wight	North & East	Portsmouth	Southampton	Western	Force
October 2008	100%	100%	90%	100%	No data	100%	98%
YTD	100%	98%	97%	97%	62%	97%	92%

% where the victim has been updated on a monthly basis (if applicable)

	Central	Isle of Wight	North & East	Portsmouth	Southampton	Western	Force
October 2008	75%	75%	80%	100%	No data	100%	86%
YTD	96%	79%	86%	90%	94%	93%	90%

% where the victim was notified upon filing (if applicable)

	Central	Isle of Wight	North & East	Portsmouth	Southampton	Western	Force
October 2008	100%	95%	90%	100%	No data	95%	96%
YTD	100%	94%	86%	96%	100%	93%	95%

Victim support status for crimes

Month of Nov 2008	Central	Isle of Wight	North & East	Portsmouth	Southampton	Western	Force	Force %
Victim informed of VSS accepted	284	56	200	147	337	259	1283	9.50%
Victim informed of VSS declined	1782	477	1431	1237	1728	1511	8166	60.45%
VSS aware	134	7	63	20	30	41	295	2.18%
Victimless crime	618	218	664	643	622	519	3284	24.31%
Not stated	34	13	133	119	139	42	480	3.55%
Total crimes	2852	771	2491	2166	2856	2372	13508	N/A
% referred	14.66%	8.17%	10.56%	7.71%	12.85%	12.65%	11.68%	N/A

YTD to Nov 2008	Central	Isle of Wight	North & East	Portsmouth	Southampton	Western	Force	Force %
Victim informed of VSS accepted	2109	487	1625	1136	2704	2014	10075	9.21%
Victim informed of VSS declined	14320	4824	13235	9956	14584	12724	69643	63.68%
VSS aware	600	72	381	195	206	322	1776	1.62%
Victimless crime	5133	1944	5025	4930	4925	4473	26430	24.17%
Not stated	41	75	356	648	274	45	1439	1.32%
Total crimes	22203	7402	20622	16865	22693	19578	109363	N/A
% referred	12.20%	7.55%	9.73%	7.89%	12.82%	11.93%	10.84%	N/A