

# **Monthly Performance Summary April 2008**

## Year to date performance matrix

		Target	Actual	Central	Isle of Wight	North & East	Portsmouth	Southampton	Western	Crime	Operations	
Safer Neighbourhoods	Perception of drug use in local area	< 22.9%	23.0%	Force level target only								
	Confidence in local police	> 58.3%	57.4%	Force level target only								
	Understanding community issues	> 65.6%	64.2%	Force level target only								
	Successful neighbourhood priorities	> 33%	No data	No data	No data	No data	No data	No data	No data	No data	No data	
	Anti-social use of motor vehicle	-5.0%	No data	Data provided monthly in arrears						N/A		
	Anti-social behaviour	-5.0%	No data	Data provided monthly in arrears						N/A		
	Reduce criminal damage	-12%	20.7%	16.7%	25.9%	22.3%	22.4%	9.8%	25.0%	N/A		
	Assault with injury*	-5.0%	6.3%	10.5%	-8.4%	-0.2%	0.1%	17.7%	1.9%	N/A		
		OCU specific targets		-7.00%	-5.00%	0.00%	-5.00%	-10.00%	-5.00%			
	Overall satisfaction	> 62%	60.0%	63.0%	67.0%	55.0%	57.0%	59.0%	62.0%	N/A		
Being kept informed	> 60%	44.0%	45.0%	50.0%	40.0%	41.0%	44.0%	47.0%	N/A			
<b>Safer Neighbourhoods - targets achieved</b>		<b>2</b>	<b>1</b>	<b>2</b>	<b>1</b>	<b>0</b>	<b>0</b>	<b>1</b>				
Safeguard people	DV Incident arrest rate#	> 35%	No data	No data	No data	No data	No data	No data	No data	N/A		
	DV victimisation#	Placeholder	Placeholder								N/A	
	Repeat victims of domestic violence	-5.0%	No data	No data	No data	No data	No data	No data	No data	N/A		
	Domestic violence OBJT rate	Placeholder	Placeholder								N/A	
	Hate crime detection rate	> 45%	41.4%	No data	No data	No data	No data	No data	No data	N/A		
	Sexual offender reoffending rate	Placeholder	Placeholder									
<b>Safeguard people - targets achieved</b>		<b>0</b>	<b>0</b>	<b>0</b>	<b>0</b>	<b>0</b>	<b>0</b>	<b>0</b>				
Protect our communities	Number of Rainbow visits	Placeholder	Placeholder									
	Dangerous sites assessed as green	Placeholder	Placeholder									
	Road traffic casualties	< 78	24.0	Owned by Operations OCU							24.0	
<b>Protect our communities - targets achieved</b>		<b>1</b>	<b>0</b>	<b>0</b>	<b>0</b>	<b>0</b>	<b>0</b>	<b>0</b>	<b>0</b>	<b>1</b>		
Prevent, reduce and detect crime	Serious violent crime	-6.0%	9.5%	138.6%	-10.9%	-1.4%	-28.1%	-31.3%	9.2%	N/A		
	All crime*	-3.0%	5.5%	7.0%	0.4%	2.3%	3.8%	7.8%	8.2%	N/A		
		OCU specific targets		-3.0%	-3.0%	-2.0%	-2.0%	-5.0%	-6.0%			
	Serious violent crime SD	> 50%	46.8%	20.0%	116.7%	8.3%	80.0%	71.4%	71.4%	N/A		
	Serious acquisitive crime*	-2.0%	2.0%	6.6%	20.4%	2.6%	-0.9%	5.1%	-7.7%	N/A		
		OCU specific targets		-2.0%	-3.0%	-3.0%	-2.0%	-3.0%	-3.0%			
	Serious sexual crime OBJT rate	Placeholder	Placeholder									
	Serious acquisitive crime SD	> 15%	9.7%	8.5%	10.9%	11.5%	12.1%	8.0%	8.8%	N/A		
	Murder offences	< 1.33	0.00	Owned by Crime OCU							0.0%	Owned by Crime OCU
	Asset recovery	Placeholder	Placeholder									
	PPO convictions	Placeholder	Placeholder									
Class A drugs SD	> 33	37	Owned by Crime OCU							37	Owned by Crime OCU	
<b>Prevent, reduce and detect crime - targets achieved</b>		<b>2</b>	<b>0</b>	<b>2</b>	<b>0</b>	<b>2</b>	<b>2</b>	<b>2</b>	<b>2</b>	<b>2</b>	<b>0</b>	
Organisational management	Police officer sickness	< 0.63	0.89	0.76	0.88	0.44	1.08	1.38	1.10	0.51	1.02	
	Police staff sickness	< 0.63	0.79	0.83	1.01	1.03	0.99	1.08	0.76	0.63	0.39	
	NCRS compliance	Good	N/A	Fair	Fair	Fair	Poor	Poor	Fair	No data	N/A	
		90.0%		82%	82%	84%	72%	64%	85%	No data		
	Budget spend	On Budget	No data	No data	No data	No data	No data	No data	No data	No data	No data	
	Efficiency savings	> £10m	No data	No data	No data	No data	No data	No data	No data	No data	No data	
<b>Organisational management - targets achieved</b>		<b>0</b>	<b>0</b>	<b>0</b>	<b>1</b>	<b>0</b>	<b>0</b>	<b>0</b>	<b>0</b>	<b>1</b>	<b>1</b>	
<b>Force Total - targets achieved</b>		<b>3</b>	<b>1</b>	<b>4</b>	<b>2</b>	<b>2</b>	<b>2</b>	<b>3</b>	<b>3</b>	<b>2</b>		

### Notes to be read in conjunction with matrix

All citizen focus data  
 Road traffic casualties  
 Efficiency savings  
 Placeholder

#DV  
 Anti-social use of motor vehicle & behaviour

\* = variable targets across OCUs for these target areas based on previous performance and MSG position

Based on "completely or very satisfied"  
 Data is YTD 16 April 2008. Data may change as accident record data are updated  
 3 year target of £30m, notionally £10m per year  
 Target and supporting information to be confirmed

Domestic Violence  
 Data is obtained from NSIR and always 1 month in arrears

## Monthly performance matrix

		Central	Isle of Wight	North & East	Portsmouth	Southampton	Western	Crime	Operations		
<b>Safer Neighbourhoods</b>	Successful neighbourhood priorities	> 33%	No data	No data	No data	No data	No data	No data	No data		
	Anti-social use of motor vehicle	-5.0%	No data	Data provided monthly in arrears						N/A	
	Anti-social behaviour	-5.0%	No data	Data provided monthly in arrears						N/A	
	Reduce criminal damage	-12%	20.7%	16.7%	25.9%	22.3%	22.4%	9.8%	25.0%	N/A	
	Assault with injury*	-5.0%	6.3%	10.5%	-8.4%	-0.2%	0.1%	17.7%	1.9%	N/A	
	OCU specific targets		-7.00%	-5.00%	0.00%	-5.00%	-10.00%	-5.00%			
<b>Safer Neighbourhoods - targets achieved</b>		<b>0</b>		0	1	1	0	0	0		
<b>Safeguard people</b>	DV Incident arrest rate#	> 35%	No data	No data	No data	No data	No data	No data	N/A		
	DV victimisation#	Placeholder		Placeholder						N/A	
	Repeat victims of domestic violence	-5.0%	No data	No data	No data	No data	No data	No data	N/A		
	Domestic violence OBJ rate	Placeholder		Placeholder						N/A	
	Hate crime detection rate	> 45%	41.4%	No data	No data	No data	No data	No data	No data	N/A	
	Sexual offender reoffending rate	Placeholder		Placeholder							
<b>Safeguard people - targets achieved</b>		<b>0</b>		0	0	0	0	0	0		
<b>Protect our communities</b>	Number of Rainbow visits	Placeholder		Placeholder							
	Dangerous sites assessed as green	Placeholder		Placeholder							
	Road traffic casualties	<78	24.0	Owned by Operations OCU						24.0	
<b>Protect our communities - targets achieved</b>		<b>1</b>		0	0	0	0	0	0		
<b>Prevent, reduce and detect crime</b>	Serious violent crime	-6.0%	9.5%	138.6%	-10.9%	-1.4%	-28.1%	-31.3%	9.2%	N/A	
	All crime*	-3.0%	5.5%	7.0%	0.4%	2.3%	3.8%	7.8%	8.2%	N/A	
	OCU specific targets		-3.0%	-3.0%	-2.0%	-2.0%	-5.0%	-6.0%			
	Serious violent crime SD	> 50%	44.3%	20.0%	116.7%	8.3%	80.0%	71.4%	71.4%	N/A	
	Serious acquisitive crime*	-2.0%	2.0%	6.6%	20.4%	2.6%	-0.9%	5.1%	-7.7%	N/A	
	OCU specific targets		-2.0%	-3.0%	-3.0%	-2.0%	-3.0%	-3.0%			
	Serious sexual crime OBJ rate	Placeholder		Placeholder							
	Serious acquisitive crime SD	> 15%	9.7%	8.5%	10.9%	11.5%	12.1%	8.0%	8.8%	N/A	
	Murder offences	<1.33	0.00	Owned by Crime OCU						0.0%	Owned by Crime OCU
	Asset recovery	Placeholder		Placeholder							
	PPO convictions	Placeholder		Placeholder							
Class A drugs SD	>33	37	Owned by Crime OCU						37	Owned by Crime OCU	
<b>Prevent, reduce and detect crime - targets achieved</b>		<b>2</b>		0	2	0	2	2	2	2	
<b>Organisational management</b>	Police officer sickness	<0.63	0.89	0.76	0.88	0.44	1.08	1.38	1.10	0.51	1.02
	Police staff sickness	<0.63	0.79	0.83	1.01	1.03	0.99	1.08	0.76	0.63	0.39
	Budget spend	On Budget	No data	No data	No data	No data	No data	No data	No data	No data	No data
	Efficiency savings	> £10m	No data	No data	No data	No data	No data	No data	No data	No data	No data
<b>Organisational management - targets achieved</b>		<b>0</b>		0	0	1	0	0	0	1	1
<b>Force Total - targets achieved</b>		<b>3</b>		0	3	2	2	2	2	3	2

### Notes to be read in conjunction with matrix

Overall satisfaction and being kept informed  
 Road traffic casualties  
 Efficiency savings  
 Placeholder  
 Anti-social use of motor vehicle & behaviour

Based on "completely or very satisfied"  
 Data is up to **16 April 2008**  
 3 year target of £30m, notionally £10m per year  
 Target and supporting information to be confirmed  
 Data is obtained from NSIR and always 1 month in arrears

\* = variable targets across OCUs for these target areas based on previous performance and MSG position

## Safer Neighbourhoods

Overall satisfaction	SPI 1.1	Force Strategy
Being kept informed		Force Strategy
Comparative satisfaction of minority ethnic groups	SPI 1.2	
Satisfaction of victims of racist incidents	SPI 1.3	
Confidence in local police	SPI 2.3	Force Strategy
Understanding community issues		Force Strategy
Perception of anti-social behaviour	SPI 4.1	
Perception of drunk or rowdy behaviour	SPI 4.2	
Perception of drug use in local area	SPI 4.3	Force Strategy
Assault with injury	SPI 5.3	Force Strategy
Successful neighbourhood priorities		Force Strategy
Anti-social use of motor vehicle (NSIR)		Force Strategy
Anti-social behaviour (NSIR)		Force Strategy
Reduce criminal damage		Force Strategy

### Overall satisfaction

Data relates to interviews which took place May 07-Apr 08  
Overall Satisfaction (includes Burglary, Vehicle Crime, Violent Crime and RTCs)

Target 62%	1	2	3	4	5	6	Force
	63%	67%	55%	57%	59%	62%	60%

### Being kept informed

Data relates to interviews which took place May 07-Apr 08  
Being Kept Informed (includes Burglary, Vehicle Crime, Violent Crime and RTCs)

Target 60%	1	2	3	4	5	6	Force
	45%	50%	40%	41%	44%	47%	44%

### Comparative satisfaction of minority ethnic groups

Data relates to interviews which took place May 07-Apr 08  
These figures are for overall satisfaction for Burglary, Vehicle Crime, Violent Crime & RTCs it excludes Racist Incidents

	Completely and very satisfied	Completely, very and fairly satisfied
White	60.1%	79.1%
Minority Ethnic	50.5%	72.5%

### Satisfaction of victims of racist incidents

These figures are interviews which took place May 07-Apr 08 these will be updated quarterly.  
Racist incident overall satisfaction - % completely or very satisfied

	1	2	3	4	5	6	Force
%	50%	50%	71%	64%	41%	77%	58%
No of surveys	24	8	24	39	51	26	172

### British Crime Survey data

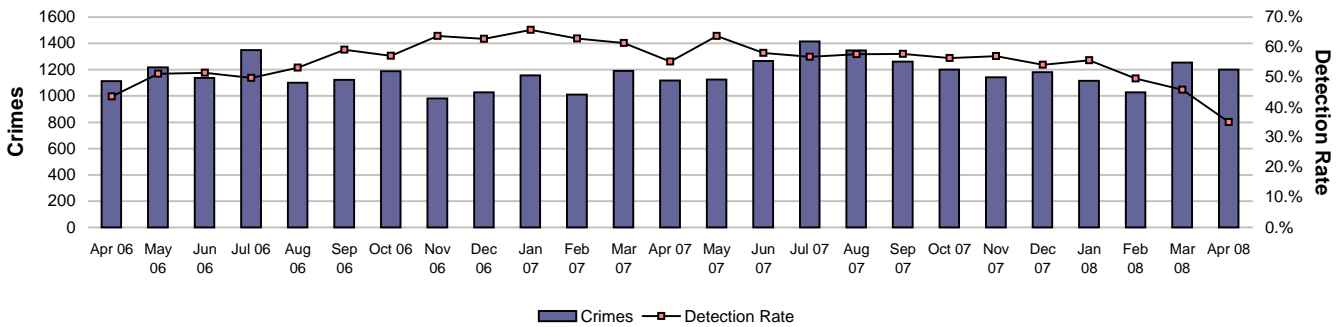
Data 12 months up to December 2007	Confidence in local police		Understanding community issues	
Avon & Somerset	49.5%	8	57.9%	8
Bedfordshire	50.5%	6	63.9%	3
Essex	53.8%	4	61.5%	4
Hampshire	57.4%	1	64.2%	2
Hertfordshire	56.4%	2	67.2%	1
Kent	49.8%	7	60.6%	6
Sussex	52.2%	5	60.4%	7
Thames Valley	56.4%	2	61.4%	5
MSG	53.3%		62.1%	

## Safer Neighbourhoods

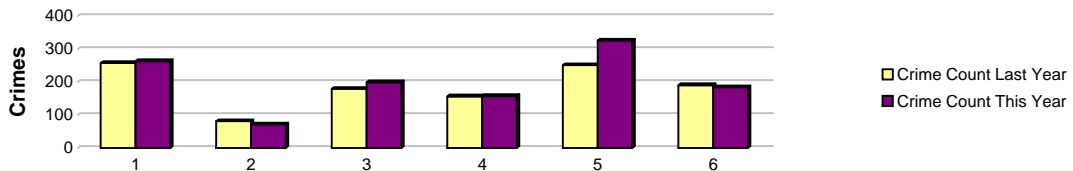
Data 12 months up to December 2007	Perception of Antisocial behaviour		Perception of drunk or rowdy behaviour		Perception of drug use	
Avon & Somerset	13.9	3	No data	No data	22.9	5
Bedfordshire	17.2	8	No data	No data	24.7	2
Essex	10.0	1	No data	No data	17.3	8
Hampshire	15.6	6	No data	No data	23.0	4
Hertfordshire	13.8	2	No data	No data	24.7	2
Kent	15.6	6	No data	No data	21.8	7
Sussex	15.2	4	No data	No data	22.3	6
Thames Valley	17.0	7	No data	No data	26.3	1
MSG	14.8		0.0		22.9	

### Assault with injury

#### Assaults with Less Serious Injury

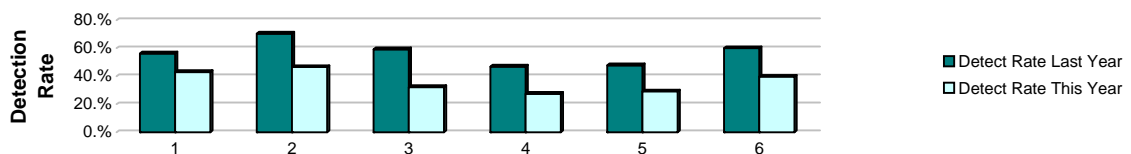


Crimes	1	2	3	4	5	6	Force
YTD Apr 08 to Apr 08	263	71	199	157	326	184	1200
YTD Apr 07 to Apr 07	258	81	179	156	251	190	1115
This month	263	71	199	157	326	184	1200
% change from 07/08	1.9%	-12.3%	11.2%	0.6%	29.9%	-3.2%	7.62%



Detections	1	2	3	4	5	6	Force
YTD Apr 08 to Apr 08	43.0%	46.5%	32.2%	27.4%	29.1%	39.7%	35.08%
YTD Apr 07 to Apr 07	56.2%	70.4%	59.2%	46.8%	47.8%	60.0%	55.16%
This month	113	33	64	43	95	73	421
YTD Detections	113	33	64	43	95	73	421
% change from 07/08	-22.1%	-42.1%	-39.6%	-41.1%	-20.8%	-36.0%	-31.54%

Note: Detections refer to Sanction Detections ONLY



## Safer Neighbourhoods

### Successful neighbourhood priorities

No data available for this month

### Anti-social use of motor vehicle and anti-social behaviour

Data to be provided a month in arrears

### Criminal damage

	2006/2007			2007/2008			Crime Increase	Crimes perKH	Ranking Detrate	Ranking perKH
	Crimes	S Detects	Sanction Detrate	Crimes	S Detects	Sanction Detrate				
Avon & Somerset	33557	4300	16.5%	30063	4539	17.7%	-7.7%	56.38	6	8
Bedfordshire	10717	1217	14.1%	10141	1231	14.4%	-5.4%	54.73	8	7
Essex	30010	5248	22.3%	26379	5005	24.5%	-8.6%	41.85	1	1
Hampshire	45362	4453	15.7%	38927	4705	18.5%	-10.3%	52.73	5	6
Hertfordshire	20713	2832	18.7%	17374	2541	19.8%	-11.8%	44.25	4	3
Kent	36827	5622	20.1%	31425	4994	22.4%	-12.2%	48.21	3	4
Sussex	30060	4332	19.6%	26659	4746	23.5%	-11.6%	43.92	2	2
Thames Valley	40273	5475	16.6%	35931	5214	17.0%	-9.3%	51.16	7	5
MSG	247519	33479	13.5%	216899	32975	15.2%	-12.4%	44.01		

## Safeguard people

DV Incident arrest rate	Force Strategy
DV victimisation	Force Strategy
Repeat victims of domestic violence	Force Strategy
Domestic violence OBTJ rate	Force Strategy
Hate crime detection rate	Force Strategy
Sexual offender reoffending rate	Force Strategy

### DV Incident arrest rate

No data

### DV victimisation

Placeholder

### Repeat victims of domestic violence

No data

### Domestic violence OBTJ rate

No data

### Hate crime detection rate

YTD April 2008

2008/2009 Racist incidents	FORCE
Racist incidents	140
Racist crimes	115
Racist detections	51
% detection rate	44.3%

2008/2009 Homophobic incidents	FORCE
Homophobic incidents	23
Homophobic crimes	14
Homophobic detections	4
% detection rate	28.6%

2008/2009 Transphobic incidents	FORCE
Transphobic incidents	5
Transphobic crimes	4
Transphobic detections	0
% detection rate	0.0%

Overall hate crime YTD

FORCE
168
133
55
41.4%

### Sexual offender reoffending rate

Placeholder

## Protect our communities

Number of Rainbow visits Force strategy  
 Dangerous sites assessed as green Force strategy  
 Road traffic casualties SPI 9.1 Force strategy

### Number of Rainbow visits

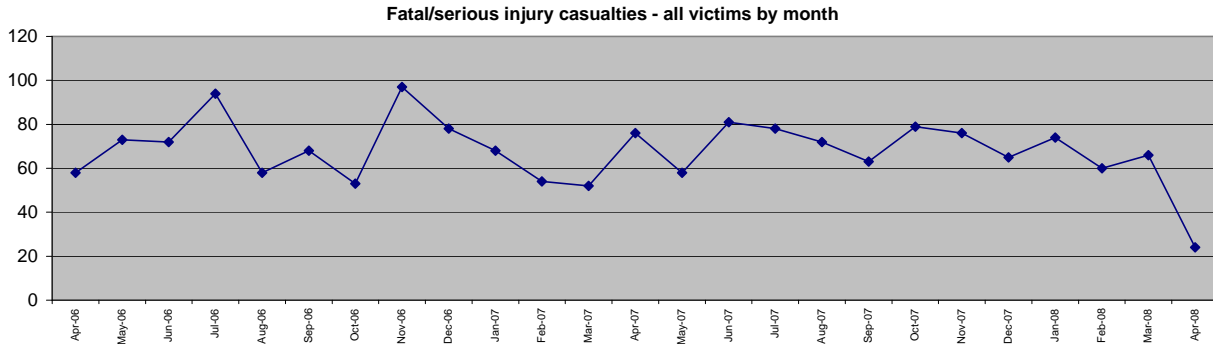
Placeholder

### Dangerous sites assessed as green

Placeholder

### Road traffic casualties

#### Fatal/serious injury casualties - all victims



The Force target for 2008/2009 is for less than 938 casualties, which equates to less than 78 in 1 month

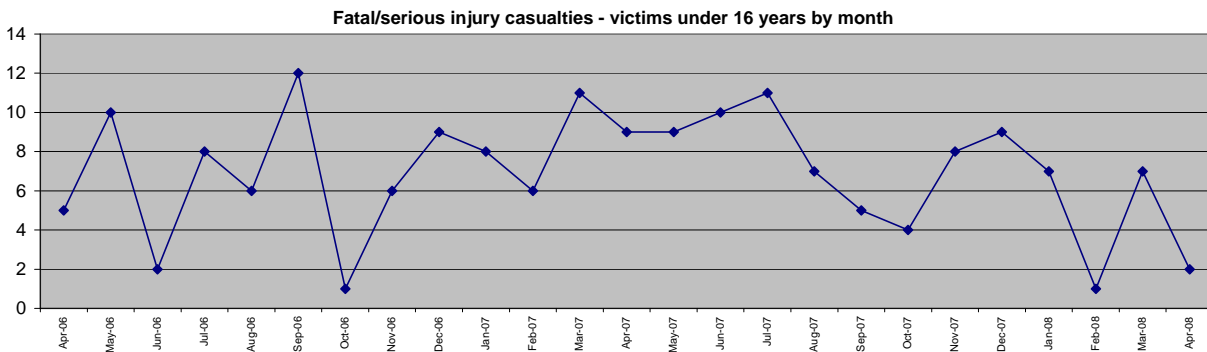
To April 2008 there were 24 casualties

April 2008	Central	Isle of Wight	North&East	Portsmouth	Southampton	Western	FORCE
April 2008 - April 2008	4	1	5	2	2	10	24
of these, fatalities were	0	0	0	0	0	1	1
April 2007 - April 2007	21	8	17	2	6	22	76
April 2006 - April 2006	9	2	14	3	6	24	58
April 2008	4	1	5	2	2	10	24
% change from last year	-81.0%	-87.5%	-70.6%	0.0%	-66.7%	-54.5%	-68.4%

NOTE: YTD numbers may change as the accident record data are updated each month

NOTE: The casualties in East Hampshire have all been attributed to North & East OCU in the absence of a breakdown by OCUs

#### Fatal/serious injury casualties - victims under 16 years



The DETR target is for a 50% reduction in child casualties by 2010 from 164 to 82 (Target 2008/2009 = 94)

April 2008	Central	Isle of Wight	North&East	Portsmouth	Southampton	Western	FORCE
April 2008 - April 2008	1	0	0	0	0	0	1
of these, fatalities were	0	0	0	0	0	0	0
April 2007 - April 2007	4	1	1	1	1	1	9
April 2006 - April 2006	1	0	1	1	0	2	5
April 2008	1	0	1	0	0	0	2
% change from last year	-75.0%	-100.0%	-100.0%	-100.0%	-100.0%	-100.0%	-88.9%

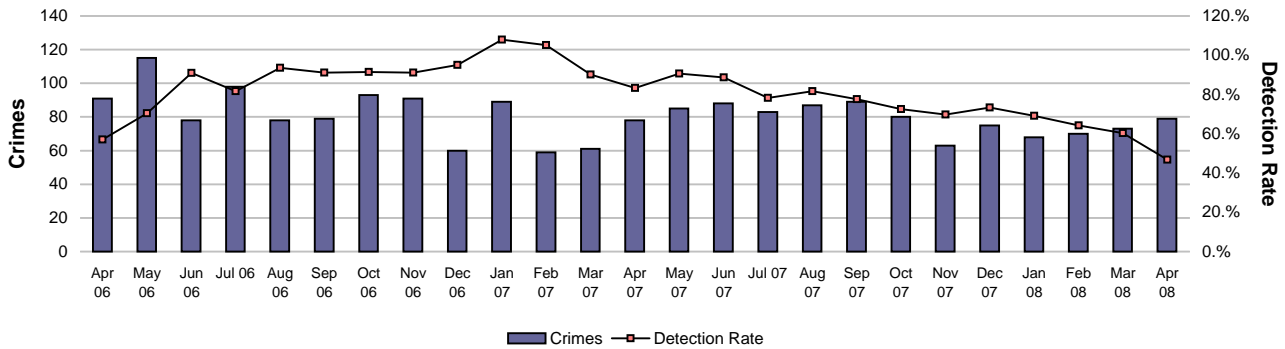
NOTE: YTD numbers may change as the accident record data are updated each month

NOTE: The casualties in East Hampshire have all been attributed to North & East OCU in the absence of a breakdown by OCUs

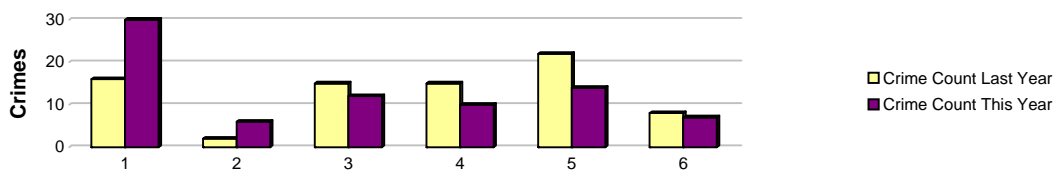
# Prevent, reduce and detect crime

Serious violent crime and sanction detections	SPI 5.1	Force strategy
All crime		Force strategy
Serious acquisitive crime and sanction detections	SPI 5.2	Force strategy
Gun crime rate	SPI 5.5	
Knife crime rate	SPI 5.6	
Serious sexual crime OBTJ rate	SPI 6.4	Force strategy
Murder offences		Force strategy
Asset recovery	SPI 8.1	Force strategy
PPO convictions	SPI 10.1	Force strategy
Class A drugs sanction detections		Force strategy
Drug Intervention Measures (DIMs)		

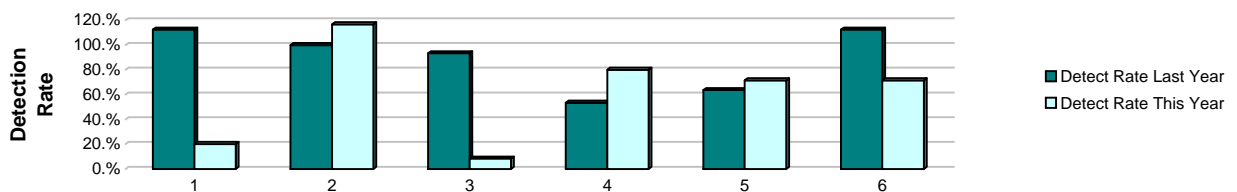
## Serious violent crime and sanction detections



Crimes	1	2	3	4	5	6	Force
YTD Apr 08 to Apr 08	30	6	12	10	14	7	79
YTD Apr 07 to Apr 07	16	2	15	15	22	8	78
This month	30	6	12	10	14	7	79
% change from 07/08	87.5%	200.0%	-20.0%	-33.3%	-36.4%	-12.5%	1.28%



Detections	1	2	3	4	5	6	Force
YTD Apr 08 to Apr 08	20.0%	116.7%	8.3%	80.0%	71.4%	71.4%	46.84%
YTD Apr 07 to Apr 07	112.5%	100.0%	93.3%	53.3%	63.6%	112.5%	83.33%
This month	6	7	1	8	10	5	37
YTD Detections	6	7	1	8	10	5	37
% change from 07/08	-66.7%	250.0%	-92.9%	0.0%	-28.6%	-44.4%	-43.08%



Note: Detections refer to Sanction Detections ONLY

# Prevent, reduce and detect crime

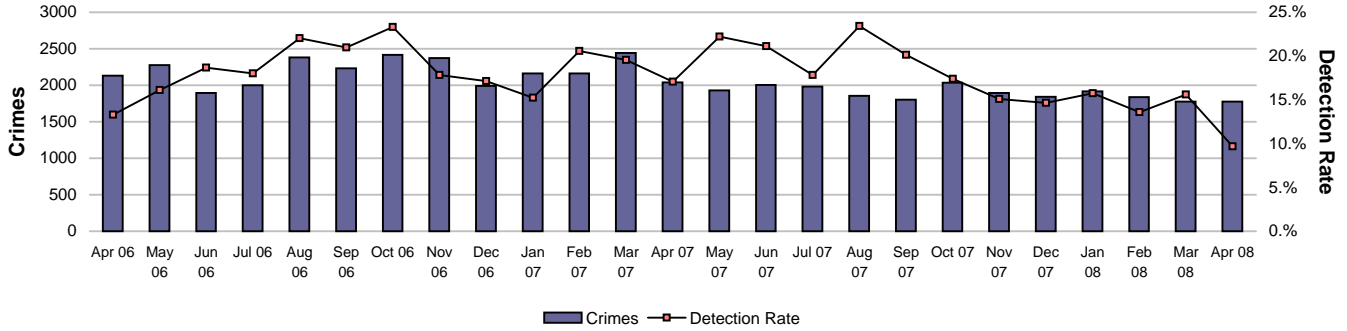
## All crime

Target = 25%

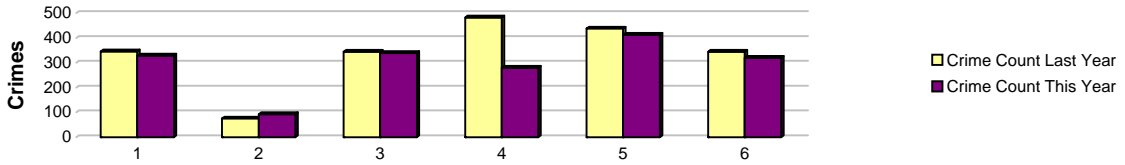
YTD April 2008

	1	2	3	4	5	6	Force
Crimes	2882	919	2533	2121	3002	2455	13912
Sanc Det rate	22.8%	29.6%	26.1%	23.5%	22.0%	20.5%	23.4%

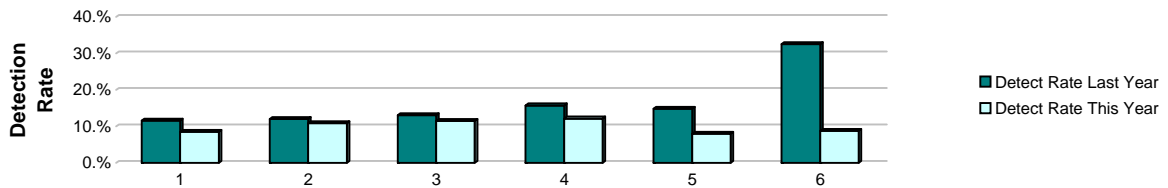
## Serious acquisitive crime and detections



Crimes	1	2	3	4	5	6	Force
YTD Apr 08 to Apr 08	329	92	339	280	413	320	1773
YTD Apr 07 to Apr 07	346	75	344	483	438	344	2030
This month	329	92	339	280	413	320	1773
% change from 07/08	-4.9%	22.7%	-1.5%	-42.0%	-5.7%	-7.0%	-12.66%



Detections	1	2	3	4	5	6	Force
YTD Apr 08 to Apr 08	8.5%	10.9%	11.5%	12.1%	8.0%	8.8%	9.70%
YTD Apr 07 to Apr 07	11.6%	12.0%	13.1%	15.7%	14.8%	32.6%	17.09%
This month	28	10	39	34	33	28	172
YTD Detections	28	10	39	34	33	28	172
% change from 07/08	-30.0%	11.1%	-13.3%	-55.3%	-49.2%	-75.0%	-50.43%



Note: Detections refer to Sanction Detections ONLY

## Prevent, reduce and detect crime

### Gun crime rate

1	2	3	4	5	6	FORCE
0	0	4	2	2	1	9

### Knife crime rate

1	2	3	4	5	6	FORCE
No data	No data	No data	No data	No data	No data	0

### Serious sexual crime OBJ rate

Placeholder

### Murder offences

1	2	3	4	5	6	FORCE
0	0	0	0	0	0	0

### Asset recovery

Placeholder

### PPO convictions

Placeholder

### Class A drugs sanction detections

1	2	3	4	5	6	7	Not allocated	FORCE
1	2	3	0	1	1	24	5	37

### Drug Intervention Measures (DIMs)

1	2	3	4	5	6	7	FORCE
9	0	13	14	17	0	0	53

## Organisational management

Minority Ethnic Officer Recruitment	SPI 3.1	
Female Officer Representation	SPI 3.2	
Efficiency savings	SPI 12.1	Force Strategy
Police officer sickness	SPI 13.1	Force Strategy
Police staff sickness	SPI 13.2	Force Strategy
NCRS compliance		Force Strategy
Budget spend		Force Strategy

### Minority Ethnic Officer Recruitment

	All recruits	Minority ethnic recruits	%
YTD April 2008	4	0	0%

### Female Officer Representation

	Male strength	Female strength	%
YTD April 2008	2815.45	1009.38	35.9%

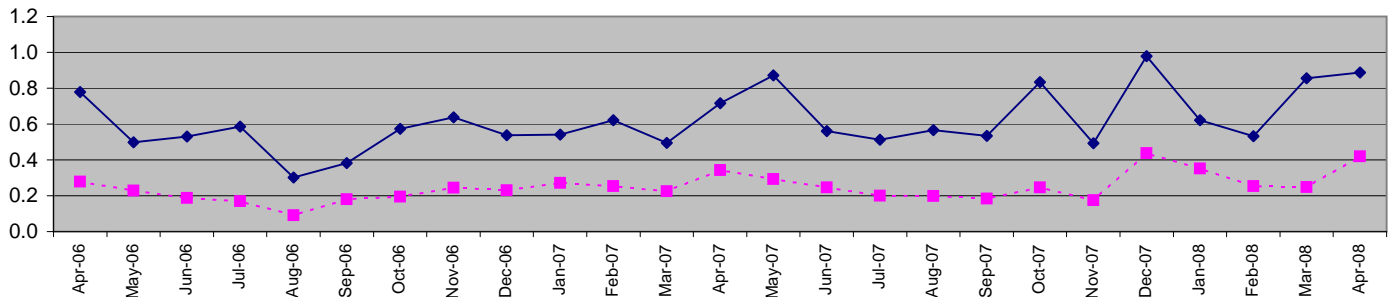
### Efficiency savings

No data

### Police officer sickness

#### Sickness absence - police officers in OCUs (SPI 13.1)

**Sickness and injury absence days per officer by month  
(broken line shows data excluding long-term sick days)**

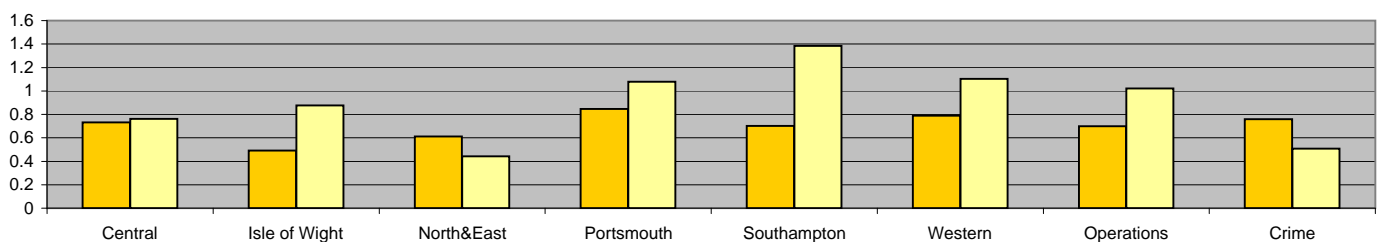


Force target for 08/09 = 7.5 days or fewer per officer. (0.625 for 1 month)

YTD = 0.89 days lost per officer

Data to April 08	Central	Isle of Wight	North&East	Portsmouth	Southampton	Western	Operations	Crime	OCU Totals
YTD Apr 08 to Apr 08	0.76	0.88	0.44	1.08	1.38	1.10	1.02	0.51	0.89
YTD Apr 07 to Apr 07	0.73	0.49	0.61	0.85	0.70	0.79	0.70	0.76	0.72
This month	0.76	0.88	0.44	1.08	1.38	1.10	1.02	0.51	0.89
% change	4.2%	78.5%	-27.5%	27.2%	97.3%	39.9%	46.0%	-33.0%	24.0%

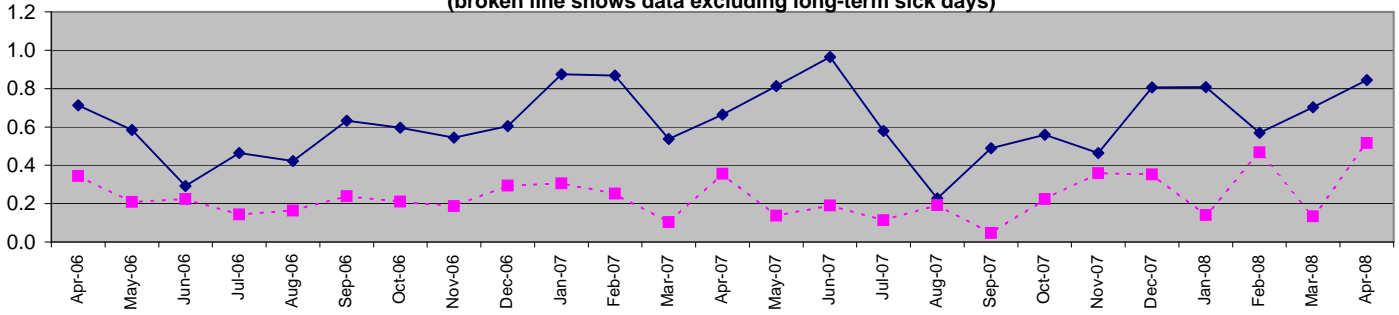
Sickness/injury days lost by officer April (last 2 yrs)



## Organisational management

### Sickness absence - police officers not on OCUs

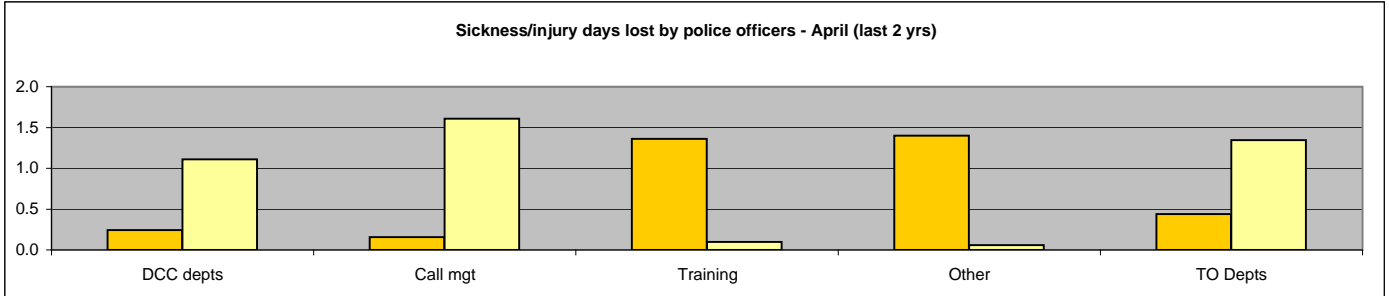
**Sickness and injury absence days per police officer by month**  
(broken line shows data excluding long-term sick days)



Force target for 08/09 = 7.5 days or fewer per officer. (0.625 for 1 month)

YTD = 0.84 days lost per officer

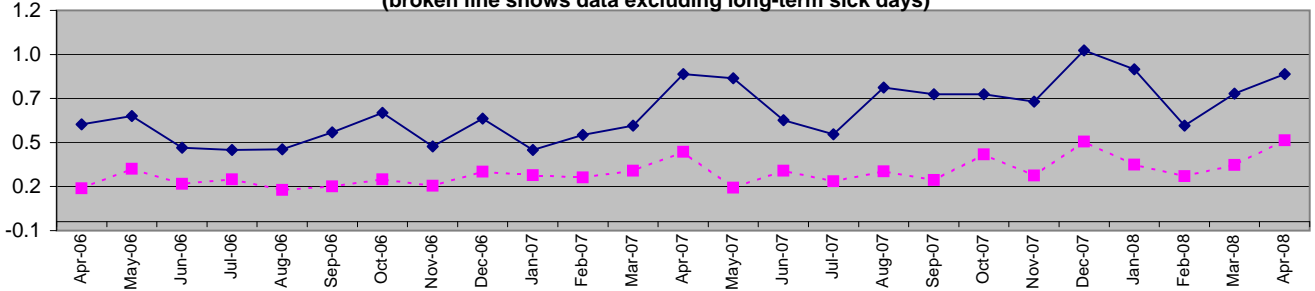
Data to April 08	DCC depts	Call mgt	Training	Other	TO Depts	Non-OCU Totals
YTD Apr 08 to Apr 08	1.11	1.61	0.10	0.06	1.34	0.84
YTD Apr 07 to Apr 07	0.24	0.16	1.36	1.40	0.44	0.67
This month	1.11	1.61	0.10	0.06	1.34	0.84
% change	360.3%	919.5%	-92.7%	-95.8%	204.8%	25.9%



"Other" includes CC, SO & DoF Portfolios, and OS Portfolio exc Call Mgmt & Training

### Sickness absence - police staff in OCUs (SPI 13.2)

**Sickness and injury absence days per police staff member by month**  
(broken line shows data excluding long-term sick days)

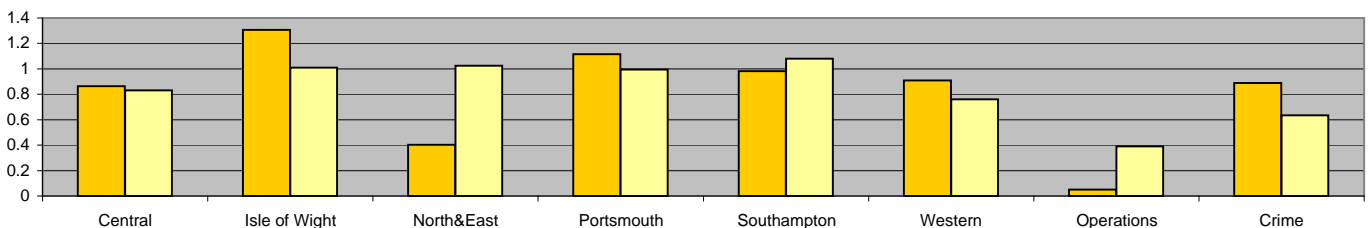


Force target for 08/09 = 7.5 days or fewer per staff member (0.625 for 1 mth)

YTD = 0.84 days lost per staff member

Data to April 08	Central	Isle of Wight	North&East	Portsmouth	Southampton	Western	Operations	Crime	OCU Totals
YTD Apr 08 to Apr 08	0.83	1.01	1.03	0.99	1.08	0.76	0.39	0.63	0.84
YTD Apr 07 to Apr 07	0.86	1.31	0.40	1.12	0.98	0.91	0.05	0.89	0.84
This month	0.83	1.01	1.03	0.99	1.08	0.76	0.39	0.63	0.84
% change	-4.0%	-22.7%	154.4%	-10.9%	10.2%	-16.3%	679.4%	-28.7%	-0.1%

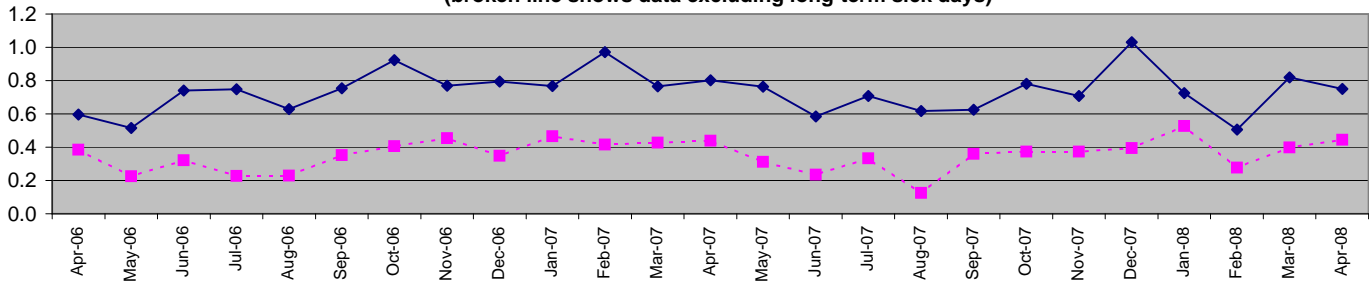
**Sickness/injury days lost by police staff**  
April (last 2 yrs)



## Organisational management

### Sickness absence - police staff not on OCUs

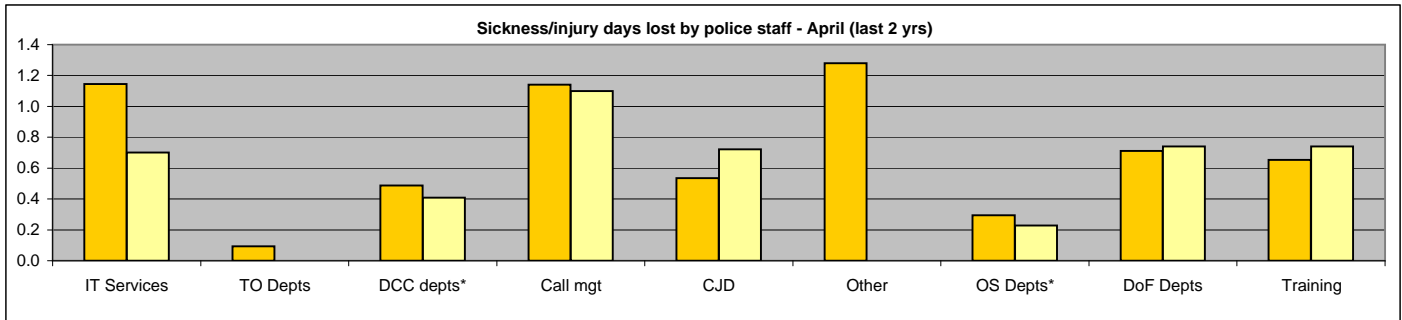
**Sickness and injury absence days per police staff member by month  
(broken line shows data excluding long-term sick days)**



Force target for 08/09 = 7.5 days or fewer per staff member (0.625 for 1 mth)

**YTD = 0.75 days lost per staff member**

Data to April 08	TO Depts	DCC depts*	Call mgt	CJD	Other	OS Depts*	DoF Depts	Training	Non-OCU Totals
YTD Apr 08 to Apr 08	0.00	0.41	1.10	0.72	0.00	0.23	0.74	0.74	0.75
YTD Apr 07 to Apr 07	0.09	0.49	1.14	0.53	1.28	0.30	0.71	0.65	0.79
This month	0.00	0.41	1.10	0.72	0.00	0.23	0.74	0.74	0.75
% change	-100.0%	-16.4%	-3.7%	35.0%	-100.0%	-23.0%	4.1%	13.2%	-5.1%



\* DCC Depts includes all depts except IT; OS Depts include all OS depts except CJD, Training & Call Mgt as reported separately. Other departments are Chief Constable and SO depts (exc 7 & 8 OCU staff as reported in OCU pages)

### NCRS compliance

	1	2	3	4	5	6	7
<b>NCRS audits</b>	Fair 82%	Fair 82%	Fair 84%	Poor 72%	Poor 64%	Fair 85%	No data
<b>Self-Inspection</b>	91.0%	85.0%	80.0%	66.0%	81.0%	90.0%	No data

Note: NCRS audit data relates to a rolling 12 mth period

Note: Self-Inspections - Only appealed records are moderated by the Force Crime Registrar

### Budget spend

No data

## Additional Data

None at present