

Performance Profile September 2011



Summary and index

Summary

2011/12 Reporting Year

This document contains a strategic overview of the Constabulary's performance. It has a variety of performance measures within it. The format of the profile has been aligned to the Policing Priorities identified by the Control Strategy. It provides information on our performance against Force targets. It also aims to provide supplementary information to assist in understanding reasons behind the performance in these areas. It has been designed as a headline document that will enable our customers, both internally and externally, to easily assess performance information for key domains. This year, as last, additional monitoring information within the six domains of the Policing Priorities will be published quarterly - a calendar of publication is located at the bottom of this page. If during a month an issue is identified which needs to be highlighted, this will be done through 'exception reporting'.

A matrix can be found at the front of the profile which reflects our year to date performance against our targets.

The Force is in the process of changing from geographic Operational Command Units (OCUs) to geographic Areas. Accordingly, data is shown for Areas where possible, remaining as OCU if not.

Solved crime rates are now included. Solved crime relates to sanction detections, community resolution and other non-sanction detection types.

Where applicable, within the document, MSG (Most Similar Group) data is published along with the crime and detection data. MSGs are calculated by the Home Office based on a number of socio-demographic & geographic variables which are strongly linked to crime/incident levels and the fear of crime. These groups provide a benchmark for comparison of crime and detection rates. Alongside the applicable crime tables there are three rows relating to MSG data. The first provides the MSG position for the Force for that crime type. The second displays Actual, this is the number of offences per 1,000 population. The third row shows the MSG Average which is the total number of offences per 1,000 population divided by the number within the MSG. The same three rows are provided in relation to detection data, where data is provided in % figures rather than per 1,000 population. Due to geographic changes mentioned above, this data is currently only available at Force level.

Please note: iQuanta data is provisional. Within the profile, Hampshire data is published and compared against the MSG average. The other forces within Hampshire's MSG are: Avon and Somerset, Bedfordshire, Essex Hertfordshire, Kent, Sussex and Thames Valley. We are unable to provide figures from iQuanta for these forces, due to the provisional nature of this data.

This document is then taken forward by key stakeholders within the organisation to the Force Performance Review Group, where it is used to highlight areas of good performance and those for development.

This is an evolving document and as such, the contents of which may alter over time and any feedback would be welcomed by the Performance Review Team.

Calendar of Quarterly Reporting

April - Catching criminals & managing offenders and Protecting our communities

May - Making the most of our resources and Equipping our team to deliver

June - Providing an excellent service and An active presence in every neighbourhood

July - Catching criminals & managing offenders and Protecting our communities

August - Making the most of our resources and Equipping our team to deliver

September - Providing an excellent service and An active presence in every neighbourhood

October - Catching criminals & managing offenders and Protecting our communities

November - Making the most of our resources and Equipping our team to deliver

December - Providing an excellent service and An active presence in every neighbourhood

January - Catching criminals & managing offenders and Protecting our communities

February - Making the most of our resources and Equipping our team to deliver

March - The year end profile will have all six domain areas included

MSG Colour Key

Force
1-2
3-4
5-6
7-8

Index

Index		
Page		
Year to date performance matrix		
2	Summary	
3	Index	
4	Year to date targets matrix	including notes on matrix terminology
Providing an excellent service		
5	User satisfaction	Target
5	Being kept informed	Consultation & Research Team
5	Comparative satisfaction of minority ethnic groups	Consultation & Research Team
5	MSG user satisfaction data	Consultation & Research Team
Providing an excellent service monitoring areas		
6	Satisfaction of victims of racist incidents	Consultation & Research Team
6	Letters of appreciation, reports of incivility, allegations and resolutions	Professional Standards Department
7	Responding to public contact, officers' attendance within target	Call Management
An active presence in every neighbourhood		
8	Reduction in criminal damage	Target
An active presence in every neighbourhood monitoring areas		
9	Anti-social behaviour (ASB)	Business Objects
9	ASB repeat callers	Call Management
10	Stop and search	Business Objects
Catching criminals and managing offenders and Protecting our communities		
11	Serious acquisitive crime (SAC) solved crime, detection rate and reduction in SAC	Target
12	Breakdown: Robbery, dwelling burglary, vehicle crime	Business Objects
12	Breakdown: Theft of a motor vehicle, theft from a motor vehicle	Business Objects
13	Violence against the person with injury	Target
14	Serious violent crime	Target
14	Homicide	Business Objects
15	Assault with less serious injury	Business Objects
16	Serious sexual offences	Business Objects
16	Rape	Business Objects
Making the most of our resources		
17	BME workforce population	Target
18	Specials scorecard (the target aspect is effective use of specials on page 17)	Target
19	Cost reductions and savings	Target
19	Protecting the frontline	Target
		HR
		Extended policy family team
		Finance
		HR

Year to date performance targets matrix

	Target	Actual	Western	Eastern	Northern
Providing an excellent service					
Overall user satisfaction	>70%	66%	65%	67%	65%
An active presence in every neighbourhood					
Reduce criminal damage	<11873	11635	3964	4414	3257
	Area specific targets		4166	4569	3139
Catching criminals & managing offenders & Protecting our communities					
Serious acquisitive solved crime	>15%	15.78%	14.18%	14.74%	19.54%
Reduction in serious acquisitive crime	<8373	8729	3329	3128	2272
	Area specific targets		3227	3029	2117
Reduce violence against the person with injury	<6954	7441	2501	3116	1824
	Area specific targets		2384	2992	1579
Most serious violence sanction detections	>50%	57.97%	59.59%	50.80%	69.00%
Making the most of our resources					
BME workforce population	>2%	2.17%	This is a Force measure		
Total number of specials officers	>550	500	This is a Force measure		
Effective use of volunteers/specials	>67%	55%	This is a Force measure		
Cost reductions and savings	Maintain top quartile position	7 of 41	This is a Force measure		
Protect the frontline	>2224	2227	This is a Force measure		
Force Total - targets achieved	6		2	2	2

Notes to be read in conjunction with matrix

Overall user satisfaction data	Based on year to date rather than rolling months
BME	Black and minority ethnic
Area specific targets	Area specific targets are rounded to 0 decimal places; the actual figure may therefore seem the same but appear amber due to this rounding
Effective use of volunteers/specials	% based on the number of officers delivering a minimum of 16 hours of duty time per month
Protect the frontline	This figure is the average number of officers conducting frontline duties

Force target areas for providing an excellent service

	Target	Actual	Western	Eastern	Northern
Overall user satisfaction year to date	70%	66%	65%	67%	65%

User Satisfaction Survey results

Year to Date by Area (April 2011 - September 2011)

Includes victims of burglary, vehicle crime and violent crime who said they were completely or very satisfied

Target > 70%	Western	Eastern	Northern	Force	No. Surveys
Overall Satisfaction	65%	67%	65%	66%	2436
Being Kept Informed	53%	54%	51%	53%	2416

Rolling 3 months by Area (July 2011 - September 2011)

Includes victims of burglary, vehicle crime and violent crime who said they were completely or very satisfied

Target > 70%	Western	Eastern	Northern	Force	No. Surveys
Overall Satisfaction	66%	66%	62%	65%	1185
Being Kept Informed	54%	54%	47%	52%	1172

Rolling 12 months data by OCU (October 2010 - September 2011)

Includes victims of burglary, vehicle crime, violent crime (& RTCs up to March only) who said they were completely or very satisfied

Target > 70%	Central	Isle of Wight	North & East	Portsmouth	Southampton	Western	Force	No. Surveys
Overall Satisfaction	66%	71%	66%	67%	64%	71%	67%	6327
Being Kept Informed	55%	56%	52%	54%	52%	58%	54%	6255

Comparative satisfaction of minority ethnic groups

Rolling 12 months data (October 2010 - September 2011)

Includes victims of burglary, vehicle crime, violent crime and racist incidents (and RTCs up to March only) who said they were completely or very satisfied with the 'Whole experience'

	Completely and very satisfied	Completely, very and fairly satisfied	No. Surveys
White	68.1%	82.4%	5970
Minority Ethnic	56.1%	77.2%	526
Satisfaction Gap	12.0%	5.2%	

NOTE: Although this measure is not a target, due to its importance, we will be reporting the figures on a monthly basis

MSG information for user satisfaction

Latest iQuanta data for MSG for the 12 months ending June 2011 (iQuanta calculate satisfaction % based on those responding that they are completely, very or fairly satisfied)

	Previous MSG position	Current MSG position	Change		Previous MSG position	Current MSG position	Change
Vehicle crime				Burglary			
Ease of contact	6/8	5/8	↑	Ease of contact	3/8	3/8	↔
Actions taken	5/8	5/8	↔	Actions taken	3/8	7/8	↓
Follow up	5/8	6/8	↓	Follow up	1/8	3/8	↓
Treatment	6/8	6/8	↔	Treatment	3/8	4/8	↓
Whole Experience	5/8	6/8	↓	Whole Experience	3/8	3/8	↔
Violent crime				All users (excluding racist incidents)			
Ease of contact	6/8	4/8	↑	Ease of contact	3/8	5/8	↓
Actions taken	4/8	6/8	↓	Actions taken	3/8	6/8	↓
Follow up	6/8	7/8	↓	Follow up	5/8	6/8	↓
Treatment	6/8	6/8	↔	Treatment	5/8	5/8	↔
Whole Experience	6/8	6/8	↔	Whole Experience	4/8	6/8	↓

Monitoring information for providing an excellent service

Satisfaction of victims of racist incidents

These figures relate to interviews which took place October 10 - September 11; these will be updated quarterly

Racist incident overall satisfaction = % completely or very satisfied

	Central	Isle of Wight	North & East	Portsmouth	Southampton	Western	Force
Percentage	67%	63%	81%	64%	61%	67%	66%
Number of surveys	30	8	31	58	62	24	21

Letters of appreciation

	Central	Isle of Wight	North & East	Portsmouth	Southampton	Western	Crime	Operations	Other	Total
April - June 2011	44	21	25	8	15	25	-	45	6	189
July - September 2011	Data not supplied									
Total	44	21	25	8	15	25	0	45	6	189

Reports of incivility

	Central	Isle of Wight	North & East	Portsmouth	Southampton	Western	Crime	Operations	Other	Total
April - June 2011	4	2	9	7	7	10	0	4	4	47
July - September 2011	12	5	10	6	7	6	1	4	2	53
Total	16	7	19	13	14	16	1	8	6	100

NOTE: OCU complaints totals may include complaints regarding officers who are serving within the area but are not located at that OCU

NOTE: Data/figures may change due to additional or new information and there may be multiple allegations per complaint

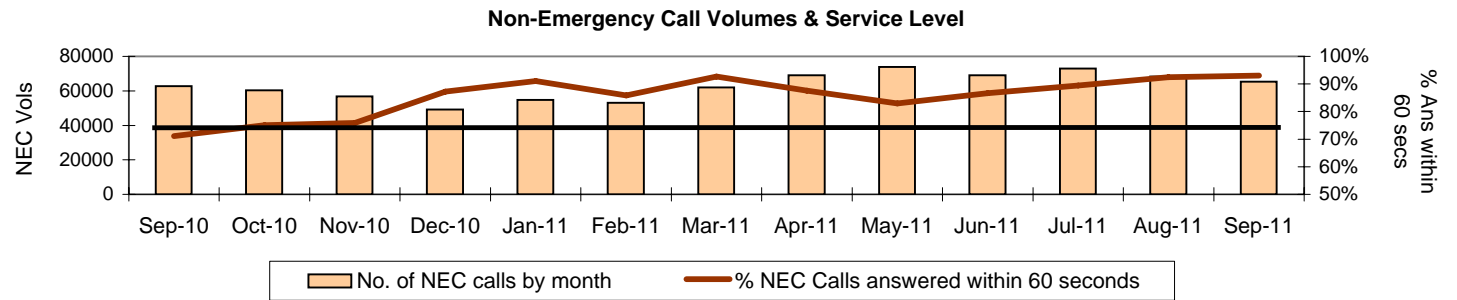
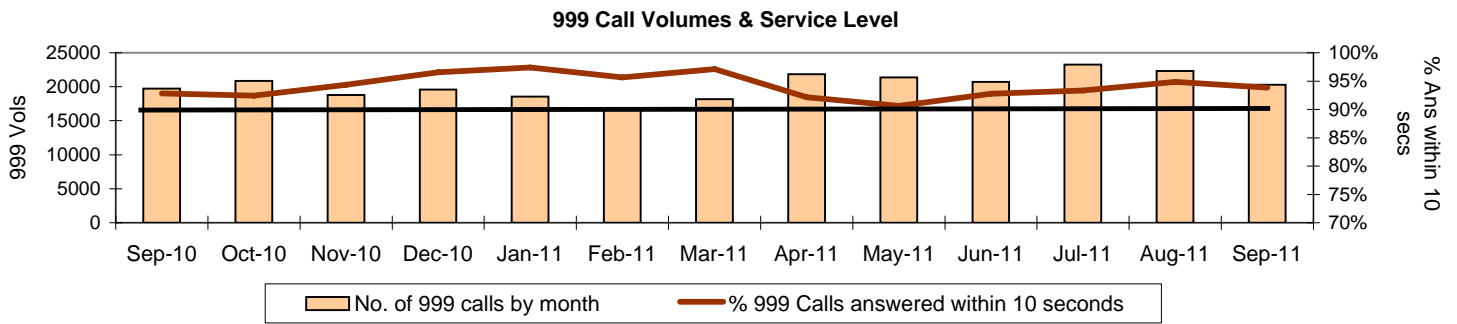
Allegations and their resolutions - for September 2011

Locally resolved by OCU	33
Locally resolved by PSD	9
Withdrawn	6
Dispensed by IPCC	6
Not upheld by OCU	6
Not upheld by PSD	4
Unsubstantiated	0
Upheld by OCU	1
Substantiated	0
Total	65

Monitoring information for providing an excellent service

Responding to public contact

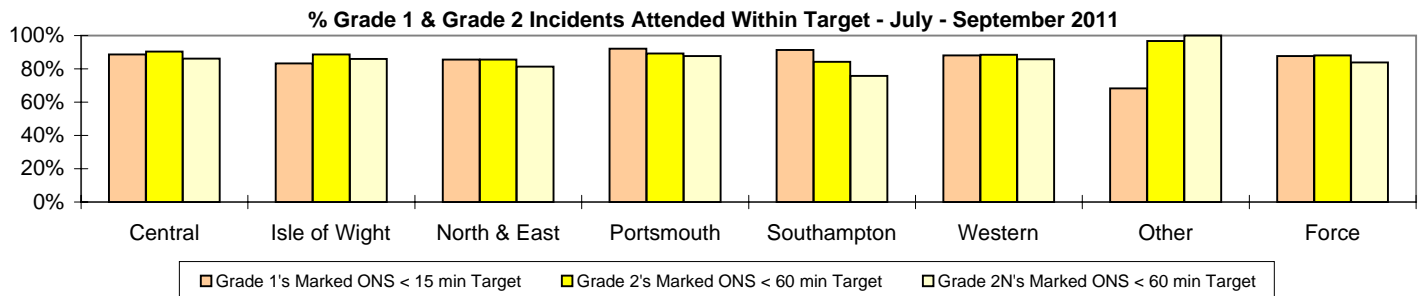
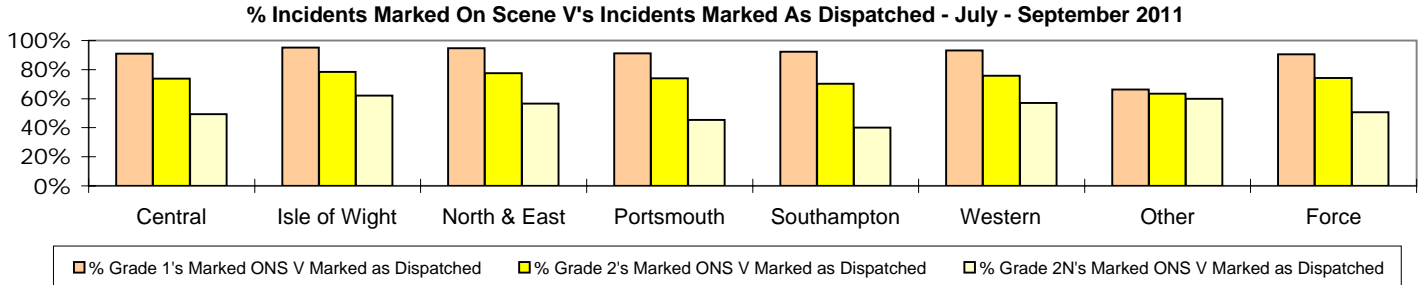
Call Volumes: Target is to answer 90% of 999 calls within 10 seconds and 75% of Non-Emergency calls within 60 seconds.



Officers attended within target

This is the time from an incident being created to the 1st Officer being marked on scene on Altaris.

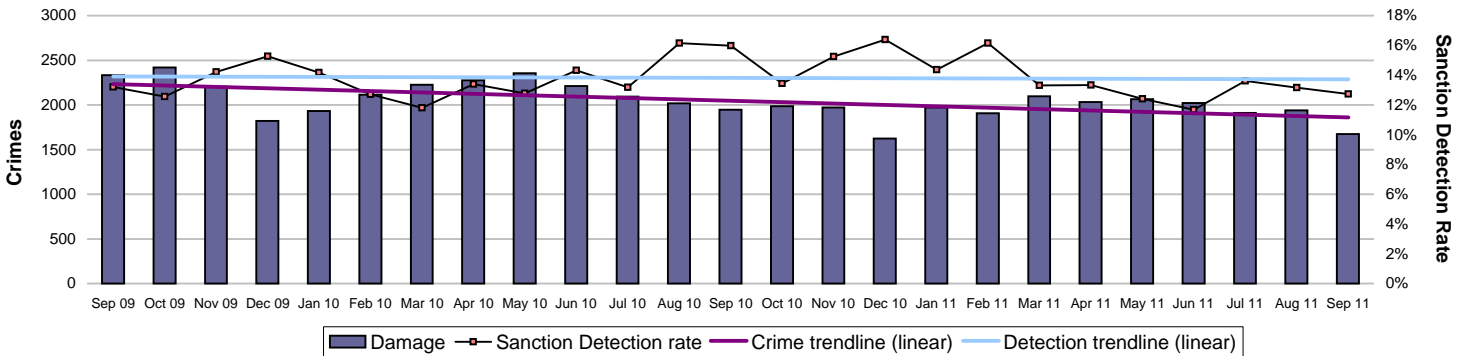
The % of Officers attending within target is based on the number of incidents marked on scene within target vs. the number of incidents marked on scene. If an incident is marked as having an officer dispatched, but is then subsequently not marked as on scene these incidents are excluded from the % Attendance



Force target areas for an active presence in every neighbourhood

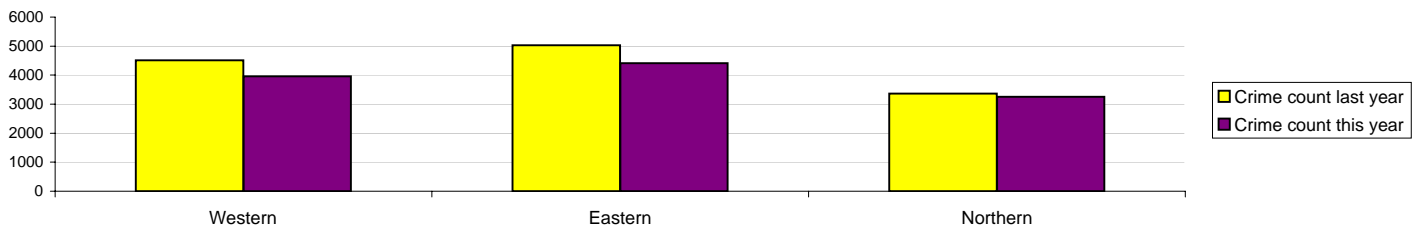
	Target	Actual	Western	Eastern	Northern
Reduce criminal damage	11873	11635	3964	4414	3257
	Area specific targets		4166	4569	3139

Criminal damage

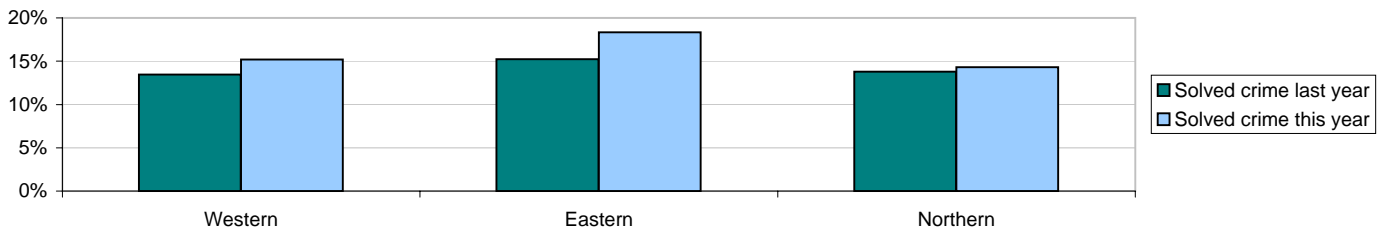


Crimes	Western	Eastern	Northern	Force
YTD Crimes	3964	4414	3257	11635
YTD Target	4166	4569	3139	11873
YTD 10/11 Crimes	4509	5032	3362	12903
This month	556	582	477	1615
% change from 10/11	-12.09%	-12.28%	-3.12%	-9.83%

	Force
MSG position	8 of 8
MSG actual	3.108
MSG average	2.804



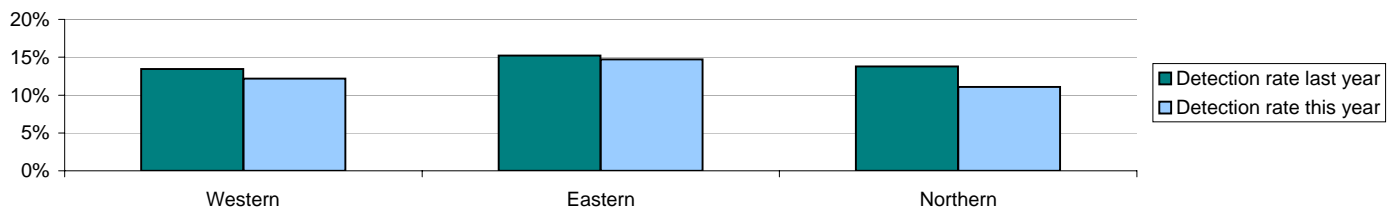
Solved crime	Western	Eastern	Northern	Force
YTD Solved crime	15.21%	18.35%	14.31%	16.15%
This month	15.11%	16.84%	16.14%	16.04%
YTD 10/11 Solved	13.44%	15.24%	13.80%	14.24%



Sanction detections	Western	Eastern	Northern	Force
YTD Detection rate	12.16%	14.70%	11.08%	12.82%
This month	12.41%	13.23%	13.00%	12.88%
YTD 10/11 Detections	13.44%	15.24%	13.77%	14.23%

	Force
MSG position	5 of 8
MSG actual	13.97%
MSG average	14.08%

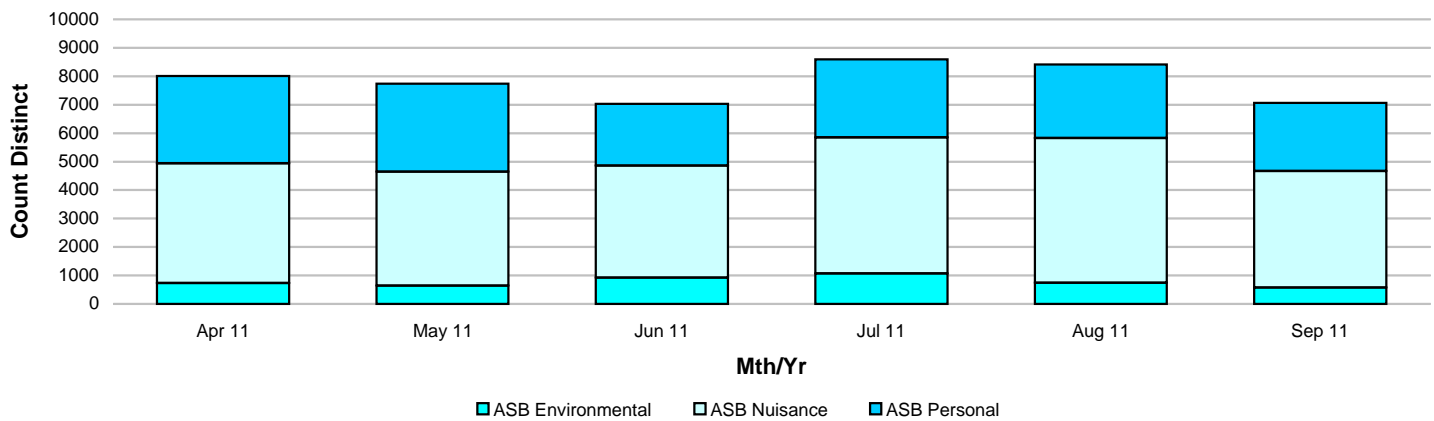
Note: Detections refer to Sanction Detections ONLY



Note: MSG data is always published a month in arrears.
For an explanation of this data, refer to the Summary on page 2

Monitoring information for an active presence in every neighbourhood

Anti-social behaviour



Year to date	Western	Eastern	Northern	Force
ASB Personal	5627	6309	4120	16056
ASB Nuisance	8882	10519	6680	26081
ASB Environmental	1586	1777	1311	4674
Total	16095	18605	12111	46811

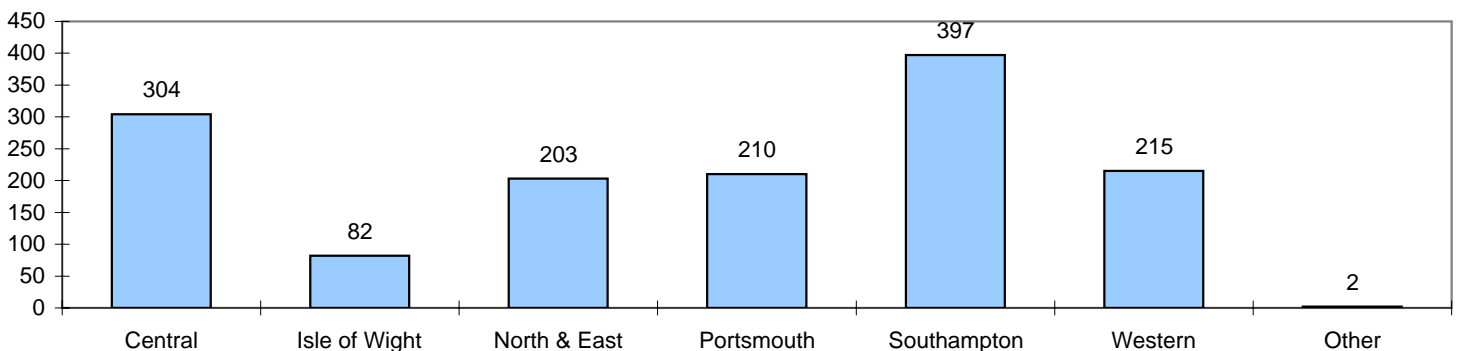
Month	Western	Eastern	Northern	Force
ASB Personal	836	964	597	2397
ASB Nuisance	1357	1616	1110	4083
ASB Environmental	183	225	166	574
Total	2376	2805	1873	7054

Repeat anti-social behaviour (ASB) callers

A repeat call for service is defined as being greater than or equal to 5 calls for service within a 12 month rolling period, based on the original telephone number for the call for service.

Data is a count of the number of times a telephone number is on an Altaris incident, which has been closed with an ASB closing code

No of telephone numbers that appear against an Altaris incident closed with an ASB closing code => 5 times



Monitoring information for an active presence in every neighbourhood

Stop and Search

For stops which have taken place between 1 April 2011 and 30 September 2011

Breakdown of Stop & Search	Western	Eastern	Northern	Force
PACE	2980	1765	1273	6018
Misuse of Drugs Act	2644	3166	3183	8993
Firearms Act	21	23	39	83
Other	9	18	17	44
Total	5654	4972	4512	15138

Resulting outcomes	Western	Eastern	Northern	Force
No Further Action	4060	3149	3350	10559
Arrested	595	591	421	1607
Cannabis Warning	271	430	343	1044
Verbal Warning/Advice Given	479	524	187	1190
Alcohol/Cigarettes Removed	79	54	33	166
Dispersal	17	20	16	53
Other	102	132	123	357
Reported for Summons (from Nov 10)	51	61	39	151
Total	5654	4961	4512	15127

	Western	Eastern	Northern	Force
% Arrested	10.52%	11.89%	9.33%	10.63%
% No Further Action	71.81%	63.33%	74.25%	69.80%

Self-Defined Ethnicity Breakdown	Western	Eastern	Northern	Force
White	4782	4390	3852	13024
Asian	186	44	221	451
Black	248	139	131	518
Mixed	99	51	115	265
Other	14	20	25	59
Not Stated	325	334	188	847
Total	5654	4978	4532	15164

	White	Asian	Black	Mixed	Other	Not Stated	Force
% Arrested	10.06%	7.98%	13.24%	13.16%	13.33%	17.78%	10.63%
% No Further Action	69.93%	73.84%	70.63%	71.80%	70.00%	64.91%	69.80%

Visual Ethnicity Breakdown	Western	Eastern	Northern	Force
White	4872	4470	3946	13288
Asian	257	61	215	533
Black	431	221	265	917
Other	31	22	56	109
Unknown	63	204	50	317
Total	5654	4978	4532	15164

	White	Asian	Black	Other	Unknown	Force
% Arrested	10.15%	9.18%	14.08%	17.27%	20.06%	10.63%
% No Further Action	69.94%	72.66%	70.53%	63.64%	60.19%	69.80%

* These figures relate to Stop & Search powers under the: Police and Criminal Evidence Act 1984, Criminal Justice & Public Order Act 1994, Misuse of Drugs Act 1971, Firearms Act 1968, Terrorism Act 2000 and other legislative provisions.

Force target areas for catching criminals and managing offenders

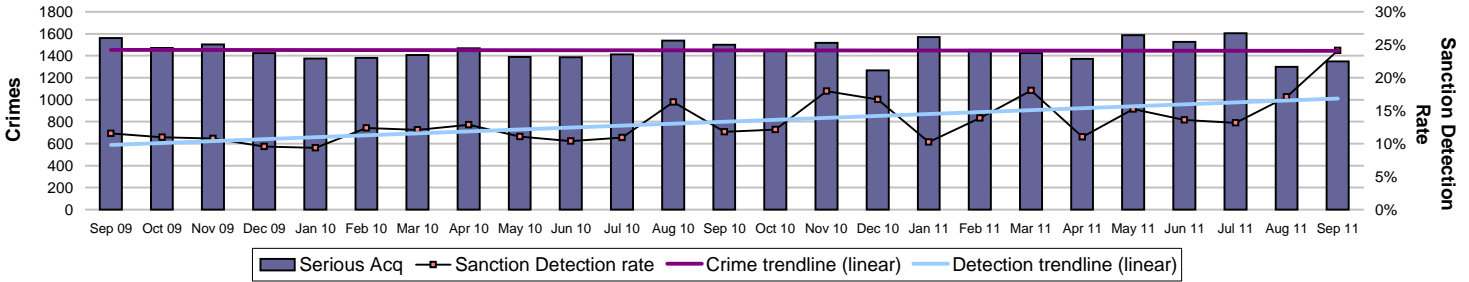
Force target areas for protecting our communities

	Target	Actual	Western	Eastern	Northern
Reduce serious acquisitive crime	8373	8729	3329	3128	2272
	Area specific targets		3227	3029	2117
Serious acquisitive solved crime rate	15%	15.8%	14.2%	14.7%	19.5%

Note: In June this year, Hampshire Police Authority agreed this target should be changed to "solved crime rate". This month the solved crime rate is included. Solved crime relates to sanction detections, community resolutions and other non-sanction detection types.

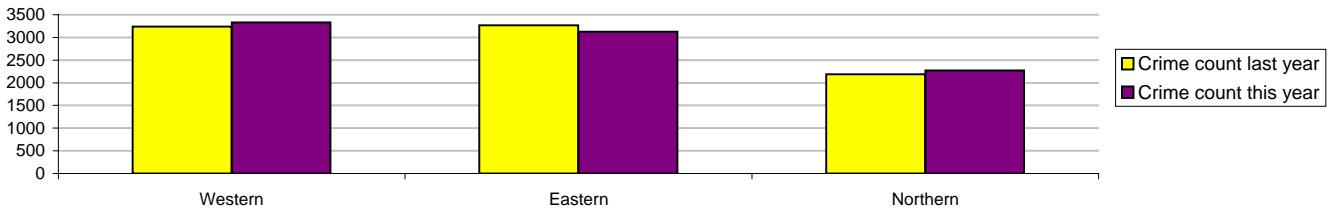
Serious acquisitive crime

Serious acquisitive crime consists of crimsec codes 28, 29, 34A, 34B, 37/2, 45 and 48



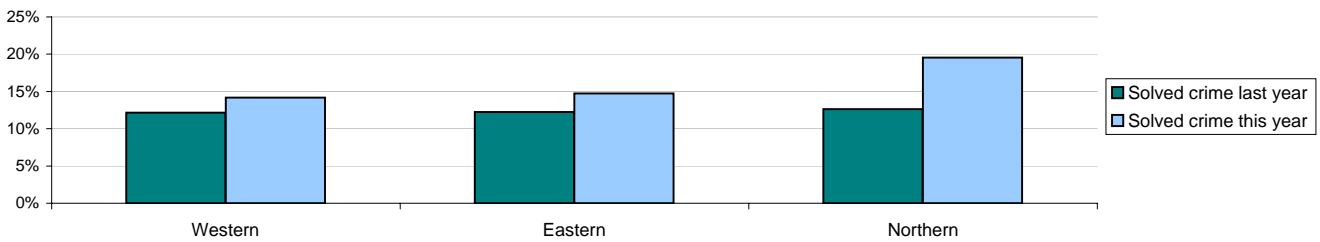
Crimes	Western	Eastern	Northern	Force
YTD Crimes	3329	3128	2272	8729
Target	3227	3029	2117	8373
YTD 10/11 Crimes	3237	3268	2187	8692
This month	515	474	356	1345
% change from 10/11	2.84%	-4.28%	3.89%	0.43%

	Force
MSG position	4 of 8
MSG actual	2.35
MSG average	2.51



Solved crime

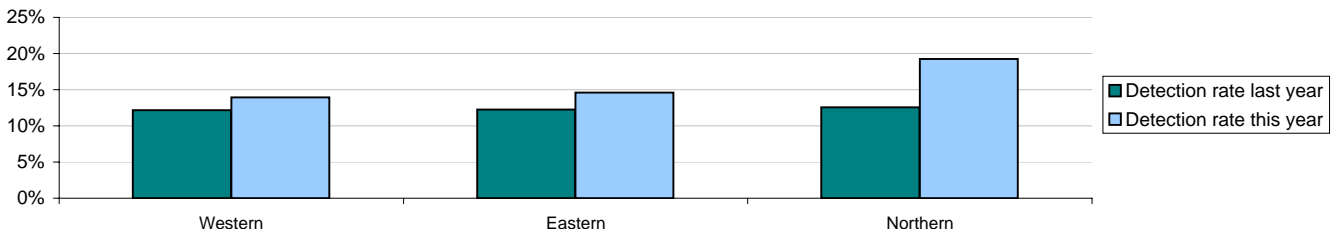
Target >15%	Western	Eastern	Northern	Force
YTD Solved Crime	14.18%	14.74%	19.54%	15.78%
This month	20.97%	29.75%	22.47%	24.46%
YTD 10/11 Solved	12.17%	12.24%	12.62%	12.31%



Sanction detections	Western	Eastern	Northern	Force
YTD Detection Rate	13.94%	14.61%	19.23%	15.56%
This month	20.39%	29.54%	22.47%	24.16%
YTD 10/11 Detections	12.17%	12.24%	12.57%	12.30%

	Force
MSG position	5 of 8
MSG actual	14.10%
MSG average	16.50%

Note: Detections refer to Sanction Detections ONLY



Note: MSG data is always published a month in arrears.
For an explanation of this data, refer to the Summary on page 2

Force target areas for catching criminals and managing offenders

Force target areas for protecting our communities

Serious acquisitive crime breakdown

Robbery

Year to date	Western	Eastern	Northern	Force
Crimes	276	168	105	549
Last year's crimes	245	182	127	554
% change from last year	12.65%	-7.69%	-17.32%	-0.90%

Force MSG Position **4 of 8**

Solved crime rate	28.62%	22.62%	32.38%	27.50%
Sanction detection rate	27.90%	22.62%	32.38%	27.14%

Force MSG Position **7 of 8**

September 2011	Western	Eastern	Northern	Force
Crimes	45	25	20	90
Solved crime rate	48.89%	56.00%	20.00%	44.44%
Sanction detection rate	44.44%	56.00%	20.00%	42.22%

Dwelling burglary

Year to date	Western	Eastern	Northern	Force
Crimes	975	1001	716	2692
Last year's crimes	912	969	545	2426
% change from last year	6.91%	3.30%	31.38%	10.96%

Force MSG Position **4 of 8**

Solved crime rate	19.49%	26.17%	20.81%	22.33%
Sanction detection rate	19.28%	26.07%	20.67%	22.18%

Force MSG Position **5 of 8**

September 2011	Western	Eastern	Northern	Force
Crimes	161	145	120	426
Solved crime rate	22.98%	60.69%	19.17%	34.74%
Sanction detection rate	22.36%	60.69%	19.17%	34.51%

Vehicle crime

Year to date	Western	Eastern	Northern	Force
Crimes	2078	1959	1451	5488
Last year's crimes	2080	2117	1515	5712
% change from last year	-0.10%	-7.46%	-4.22%	-3.92%

Force MSG Position **3 of 8**

Solved crime rate	9.77%	8.22%	17.99%	11.39%
Sanction detection rate	9.58%	8.07%	17.57%	11.15%

Force MSG Position **4 of 8**

September 2011	Western	Eastern	Northern	Force
Crimes	309	304	216	829
Solved crime rate	15.86%	12.83%	24.54%	17.01%
Solved crime numbers	49	39	53	141
Sanction detection rate	15.86%	12.50%	24.54%	16.89%

Theft of a motor vehicle

Year to date	Western	Eastern	Northern	Force
Crimes	490	403	355	1248
Solved crime rate	13.88%	21.34%	24.79%	19.39%
Sanction detection rate	13.67%	20.84%	24.23%	18.99%

Force MSG Position **3 of 8**

September 2011	Western	Eastern	Northern	Force
Crimes	76	60	52	188
Solved crime rate	17.11%	31.67%	17.31%	21.81%
Solved crime numbers	13	19	9	41
Sanction detection rate	17.11%	30.00%	17.31%	21.28%

Force MSG Position **3 of 8**

Theft from a motor vehicle

Year to date	Western	Eastern	Northern	Force
Crimes	1588	1556	1096	4240
Solved crime rate	8.50%	4.82%	15.78%	9.03%
Sanction detection rate	8.31%	4.76%	15.42%	8.84%

Force MSG Position **4 of 8**

September 2011	Western	Eastern	Northern	Force
Crimes	233	244	164	641
Solved crime rate	15.45%	8.20%	26.83%	15.60%
Solved crime numbers	36	20	44	100
Sanction detection rate	15.45%	8.20%	26.83%	15.60%

Force MSG Position **4 of 8**

Robbery, dwelling burglary and vehicle crime are the component parts of serious acquisitive crime. These individual crime types do not have targets.

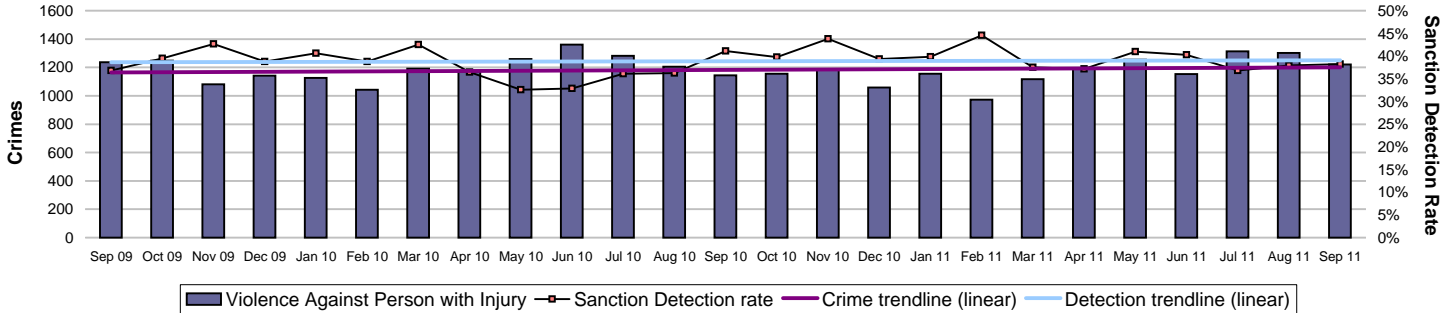
Force target areas for catching criminals and managing offenders

Force target areas for protecting our communities

	Target	Actual	Western	Eastern	Northern
Reduction of VAP with injury	6954	7441	2501	3116	1824
	Area specific targets		2384	2992	1579
Serious violent sanction detections	50.0%	58.0%	59.6%	50.8%	69.0%

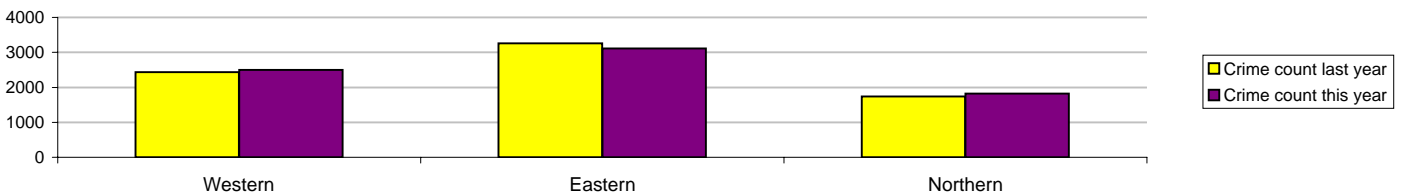
Violence against the person (VAP) with injury

VAP with injury crimsec codes 1, 2, 4.1-4.4, 4.6-4.10, 5A, 5B, 5C, 8F, 8G, 8H, 8J, 8K and 37.1

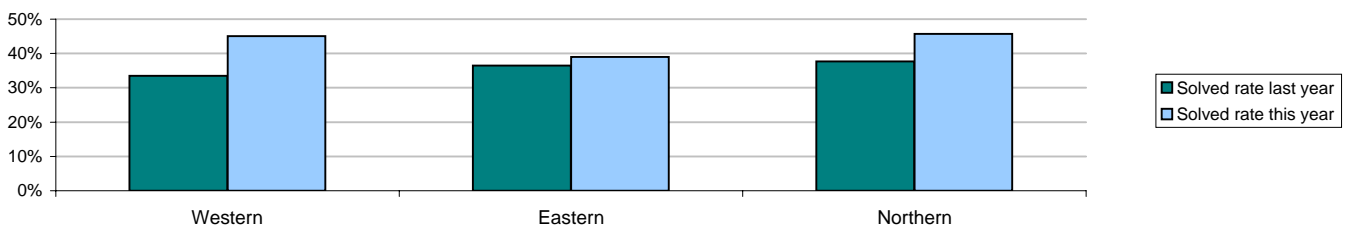


Crimes	Western	Eastern	Northern	Force
YTD Crimes	2501	3116	1824	7441
YTD Target	2384	2992	1579	6954
YTD 10/11 Crimes	2433	3257	1735	7425
This month	391	519	312	1222
% change from 10/11	2.79%	-4.33%	5.13%	0.22%

	Force
MSG position	8 of 8
MSG actual	2.01
MSG average	1.45



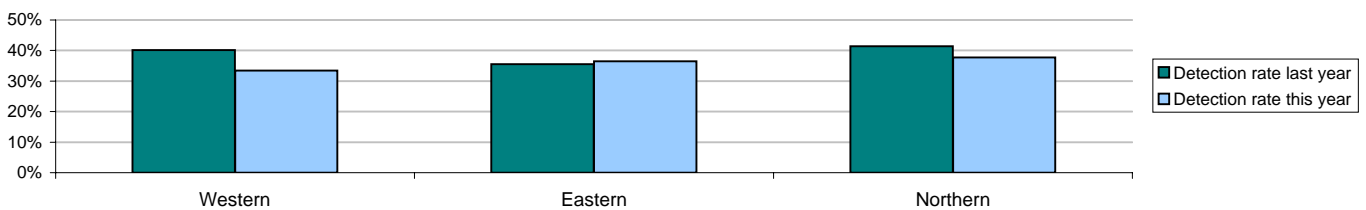
Solved crime	Western	Eastern	Northern	Force
YTD Solved Crime	45.06%	38.96%	45.72%	42.67%
This month	43.48%	36.61%	48.72%	41.90%
YTD 10/11 Solved	33.46%	36.51%	37.69%	35.78%



Sanction detections	Western	Eastern	Northern	Force
YTD Detection rate	40.18%	35.53%	41.39%	38.53%
This month	38.36%	34.30%	44.55%	38.22%
YTD 10/11 Detections	33.42%	36.48%	37.69%	35.76%

	Force
MSG position	7 of 8
MSG actual	39.53%
MSG average	42.25%

Note: Detections refer to Sanction Detections ONLY



Force target areas for catching criminals and managing offenders

Force target areas for protecting our communities

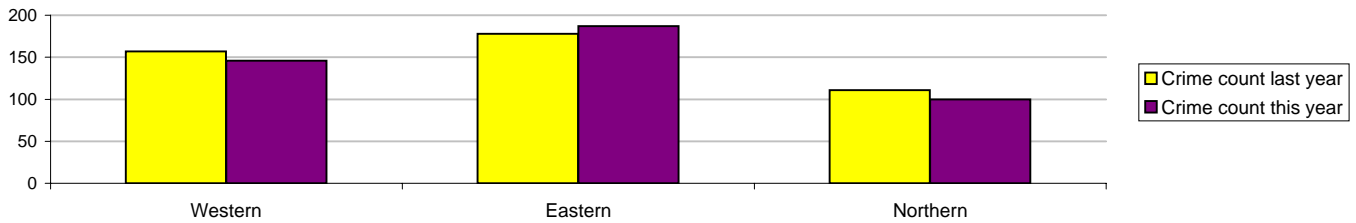
Serious violent crime

Serious violent crime consists of crimsec codes 1, 2, 4.1-4.4, 4.6, 4.8, 5A, 5B, 5C, 8F, 8H and 37.1

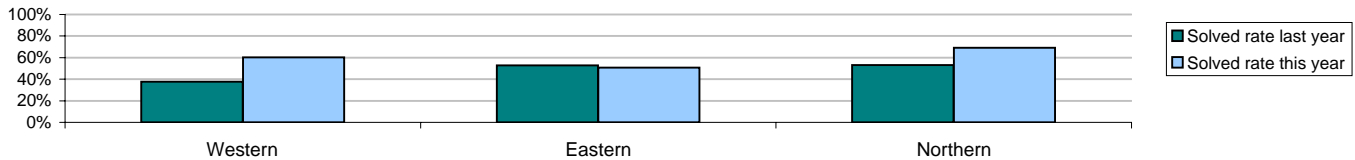


Crimes	Western	Eastern	Northern	Force
YTD Crimes	146	187	100	433
YTD 10/11 Crimes	157	178	111	446
This month	24	36	18	78
% change from 10/11	-7.01%	5.06%	-9.91%	-2.91%

	Force
MSG position	7 of 8
MSG actual	0.118
MSG average	0.090



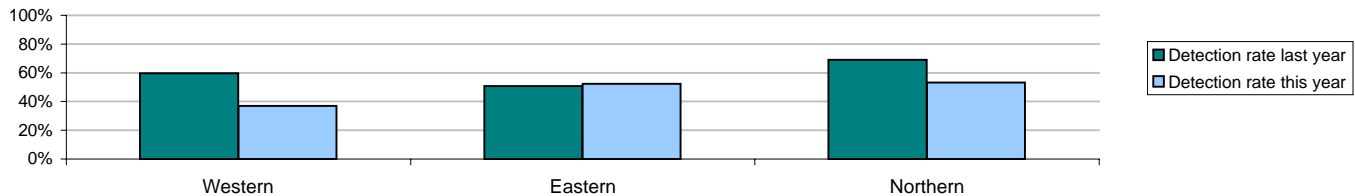
Solved crime	Western	Eastern	Northern	Force
YTD Solved Crime	60.27%	50.80%	69.00%	58.20%
This month	75.00%	47.22%	94.44%	66.67%
YTD 10/11 Solved	37.58%	52.81%	53.15%	47.53%



Sanction detections	Western	Eastern	Northern	Force
Target >50%				
YTD Detection Rate	59.59%	50.80%	69.00%	57.97%
This month	70.83%	47.22%	94.44%	65.38%
YTD 10/11 Detections	36.94%	52.25%	53.15%	47.09%

	Force
MSG position	3 of 8
MSG actual	54.37%
MSG average	53.26%

Note: Detections refer to Sanction Detections ONLY



Homicide

	Western	Eastern	Northern	Force
YTD September 2011 - total	2	0	2	4
YTD Domestic Homicides 2011/2012	1	0	0	1
YTD September 2010 - total	5	1	1	7
YTD Domestic Homicides 2010/2011	2	1	0	3

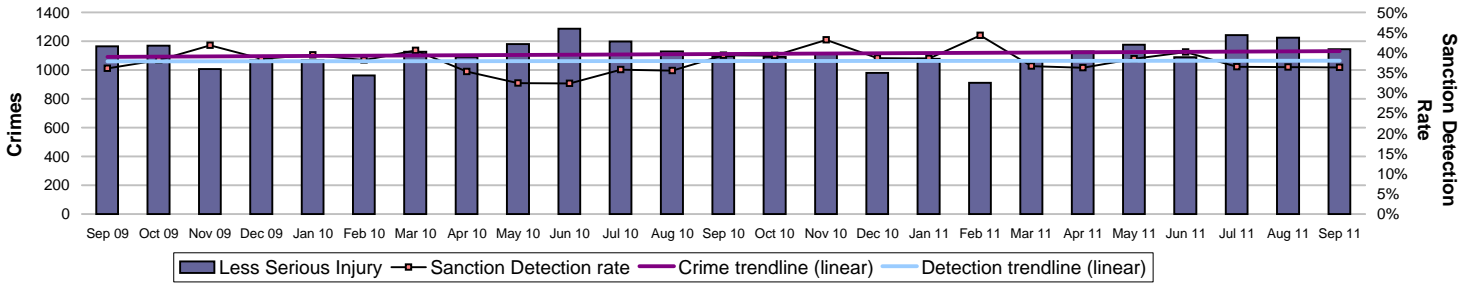
Note: A domestic homicide is where the relationship between victim and suspect was either: spouse, common-law spouse or cohabiting partner, boyfriend/girlfriend, ex-boyfriend/girlfriend or adulterous relationship

Force target areas for catching criminals and managing offenders

Force target areas for protecting our communities

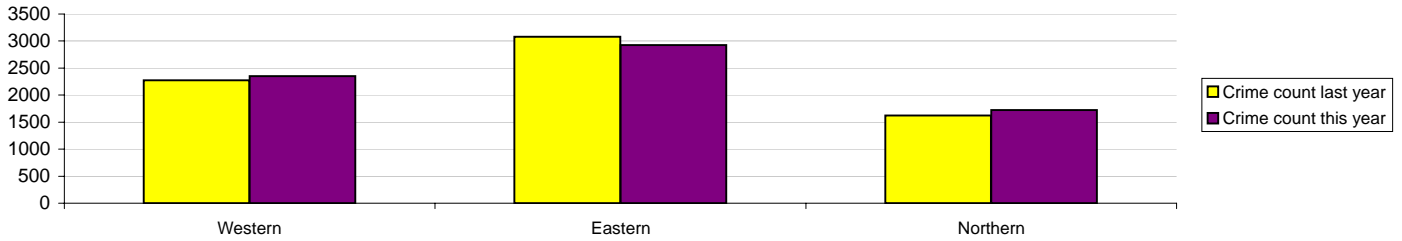
Assault with less serious injury

Assault with less serious injury consists of crimsec codes 8G and 8J

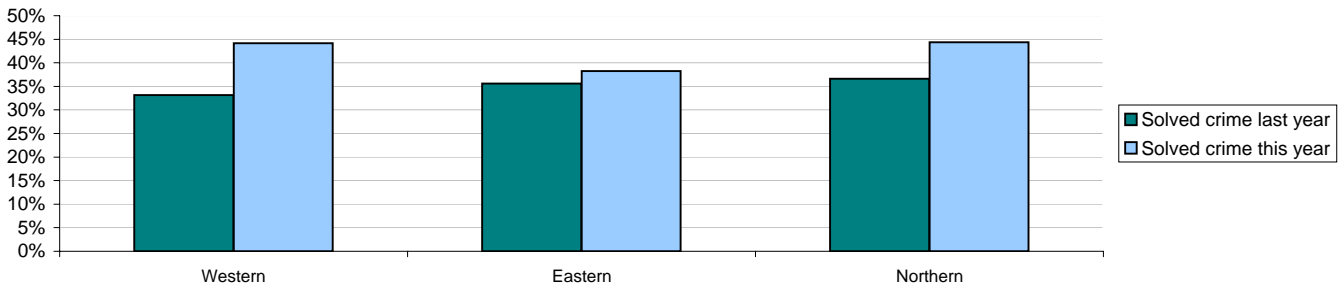


Crimes	Western	Eastern	Northern	Force
YTD Crimes	2354	2928	1724	7006
YTD 10/11 Crimes	2276	3078	1624	6978
This month	367	483	294	1144
% change from 10/11	3.43%	-4.87%	6.16%	0.40%

	Force
MSG position	8 of 8
MSG actual	1.895
MSG average	1.360



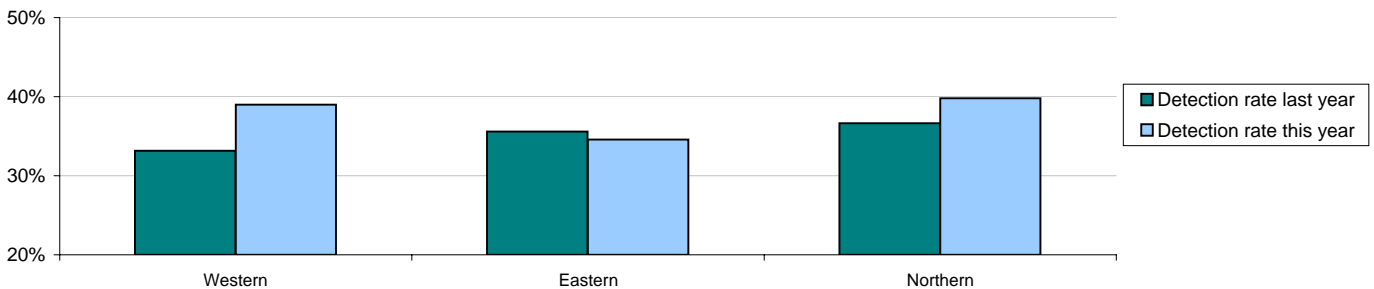
Solved Crime	Western	Eastern	Northern	Force
YTD Solved Crime	44.14%	38.22%	44.37%	41.72%
This month	41.42%	35.82%	45.92%	40.21%
YTD 10/11 Solved	33.17%	35.58%	36.64%	35.04%



Detections	Western	Eastern	Northern	Force
YTD Detection Rate	39.00%	34.56%	39.79%	37.34%
This month	36.24%	33.33%	41.50%	36.36%
YTD 10/11 Detections	33.17%	35.58%	36.64%	35.04%

	Force
MSG position	7 of 8
MSG actual	38.61%
MSG average	41.48%

Note: Detections refer to Sanction Detections ONLY

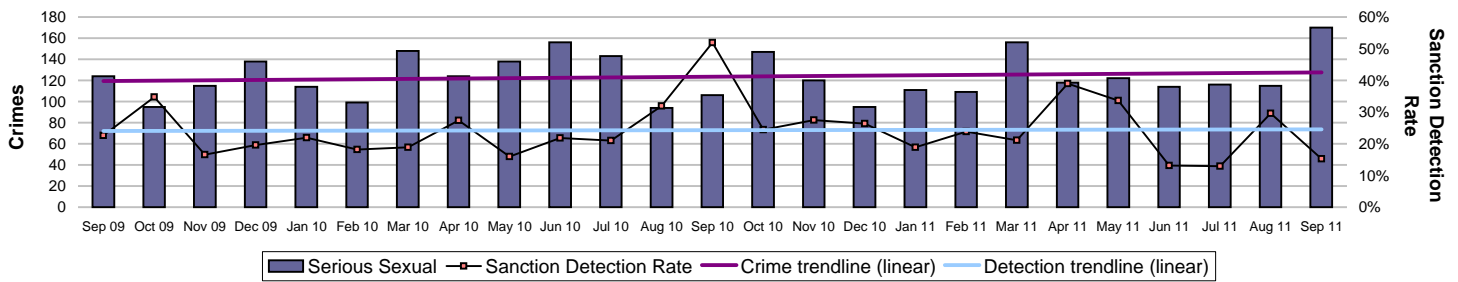


Force target areas for catching criminals and managing offenders

Force target areas for protecting our communities

Serious sexual offences

Serious sexual offences consist of crimsec codes 19A-H, 21, 17A, 17B, 20A, 20B, 22A, 70, 71 and 72

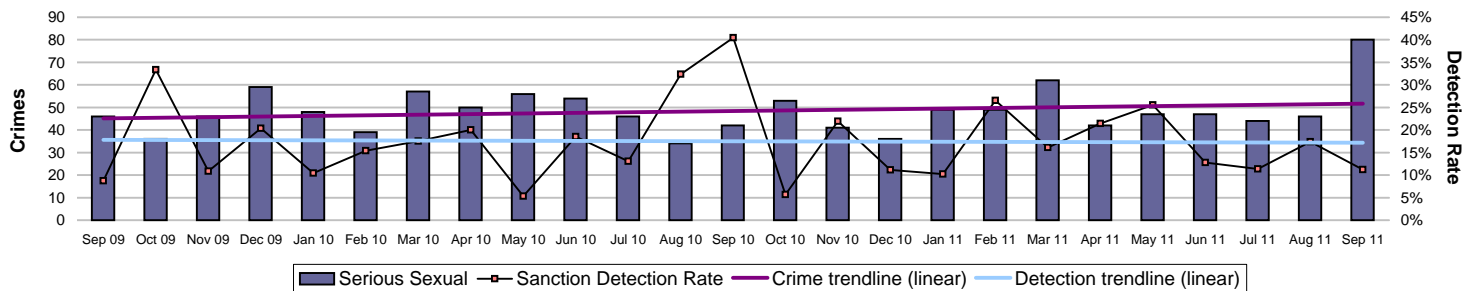


	Western	Eastern	Northern	Force
YTD Crimes	260	306	188	754
YTD 10/11 Crimes	261	317	183	761
This month	52	72	46	170
% change from 10/11	-0.38%	-3.47%	2.73%	-0.92%

	Western	Eastern	Northern	Force
YTD Solved crime	29.23%	20.26%	21.81%	23.74%
This month	26.92%	5.56%	17.39%	15.29%
YTD 10/11 Solved crime	27.20%	23.66%	34.43%	27.46%

	Western	Eastern	Northern	Force
YTD Detections	28.85%	20.26%	21.28%	23.47%
This month	26.92%	5.56%	17.39%	15.29%
YTD 10/11 Detections	26.44%	23.34%	33.88%	26.94%

Rape



	Western	Eastern	Northern	Force
YTD Crimes	110	128	67	305
YTD 10/11 Crimes	99	104	79	282
This month	26	34	20	80
% change from 10/11	11.11%	23.08%	-15.19%	8.16%

	Western	Eastern	Northern	Force
YTD Solved crime	16.36%	14.06%	19.40%	16.07%
This month	19.23%	5.88%	10.00%	11.25%
YTD 10/11 Solved crime	22.22%	20.19%	20.25%	20.92%

	Western	Eastern	Northern	Force
YTD Detection rate	16.36%	14.06%	19.40%	16.07%
This month	19.23%	5.88%	10.00%	11.25%
YTD 10/11 Detection rate	21.21%	19.23%	20.25%	20.21%

Outstanding suspects - suspects that are shown on RMS for offences up to and including 31 August 2011

	Western	Eastern	Northern	Force
Crime count	277	323	299	899
Total suspects	303	369	340	1012

Note: Previously, outstanding suspects related to those on crimes over 90 days old; data now relates to crimes over 30 days old

Force target areas making the most of our resources

	Target	Actual
BME Workforce population	2%	2.17%
Total number of specials officers	550	500
Effective use of specials	67%	55%
Cost reductions and savings	To maintain top quartile position	7 of 41
Protecting the frontline	2224	2227

BME workforce population

The 2011/2012 target is to retain 2% of all officers and staff as BME

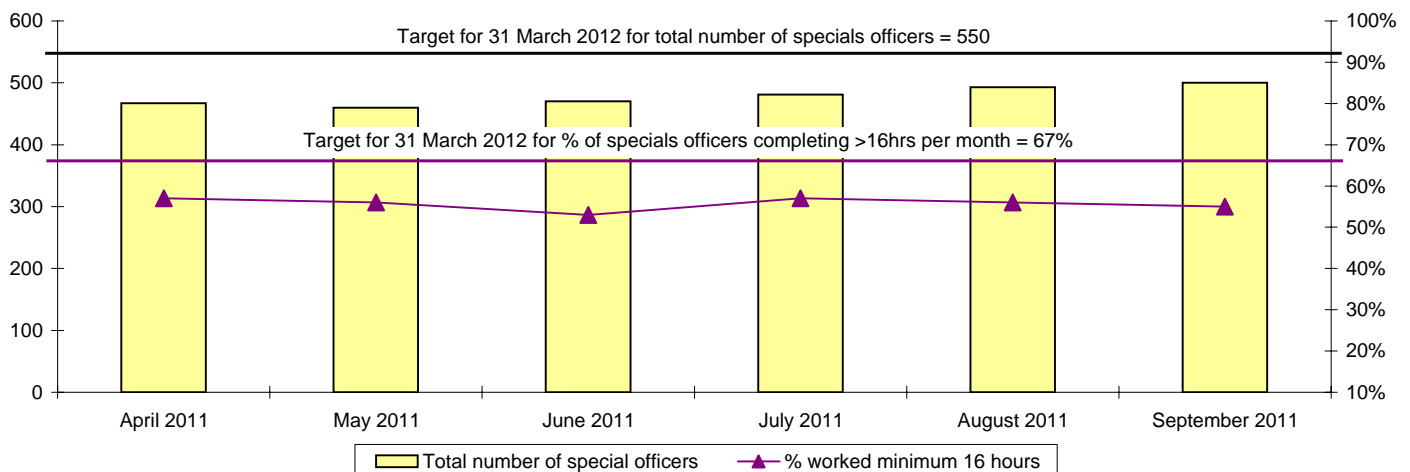
BME retention	All staff	Minority ethnic staff	Percentage
YTD August 2011	5904.2	127.92	2.17%

Police officer	Police officers	Minority ethnic police officers	Percentage
YTD August 2011	3545.35	84.13	2.37%

Police staff (incl PCSOs)	Police staff	Minority ethnic police staff	Percentage
YTD August 2011	2358.85	43.79	1.86%

Effective use of specials/volunteers

September 2011	Total number of specials officers	Number of Specials completing >16hrs per month	% minimum 16 hours duty per month
Target: 550 officers Target: 67% completing >16hrs per month			
April 2011	467	266	57%
May 2011	460	257	56%
June 2011	470	249	53%
July 2011	481	272	57%
August 2011	493	276	56%
September 2011	500	274	55%
October 2011			
November 2011			
December 2011			
January 2012			
February 2012			
March 2012			



Force target areas making the most of our resources

Special Constable Balanced Scorecard

	Western	Eastern	Northern	RPU	CS/CQ	Force
Total number of officers	148	190	151	6	5	500
Number of officers on leave of absence	3	8	6	0	0	17
Total number of operational hours	2994	4067	2931	105	179	10276
Number of operational hours per 1000 population	5.7	6.4	4.8	N/A	N/A	5.8
Average number of operational hours per officer	20.6	22.3	20.2	17.5	35.8	21.3
Leavers joining regular service or transferring to another Force	0	0	0	0	0	0
Leavers not joining regular service or transferring to another Force	4	0	4	0	1	9
Number of officers completing 16 hours or more of duty per month	83	107	77	2	5	274
% of Officers completing 16 or more hours duty per month	56%	56%	51%	33%	100%	55%

Gender	Western	Eastern	Northern	RPU	CS/CQ	Force
Male	106	130	111	6	5	358
Female	42	60	40	0	0	142

Ethnicity	Western	Eastern	Northern	RPU	CS/CQ	Force
White	141	185	146	6	5	483
Mixed	1	3	0	0	0	4
Black or black British	2	0	2	0	0	4
Asian or asian British	1	1	2	0	0	4
Chinese or other	2	1	1	0	0	4
Undeclared	1	0	0	0	0	1

Age	Western	Eastern	Northern	RPU	CS/CQ	Force
25 and under	64	98	45	0	0	207
26 to 40	70	62	67	2	2	203
41 to 55	14	23	28	3	1	69
Over 55	1	7	10	1	2	21

Length of service	Western	Eastern	Northern	RPU	CS/CQ	Force
up to 1 year	50	60	48	0	0	158
1yr to 5 years	81	104	58	0	1	244
5 to 10 years	13	13	22	1	0	49
10 to 15 years	0	6	12	3	1	22
15 to 20 years	0	3	10	2	1	16
20 to 25 years	3	2	0	0	1	6
25 years and over	1	2	1	0	1	5
Number of joiners	7	9	2	N/A	N/A	18

Note: RPU - Roads Policing Unit CS/CQ - Central Support Departments

Force target areas making the most of our resources

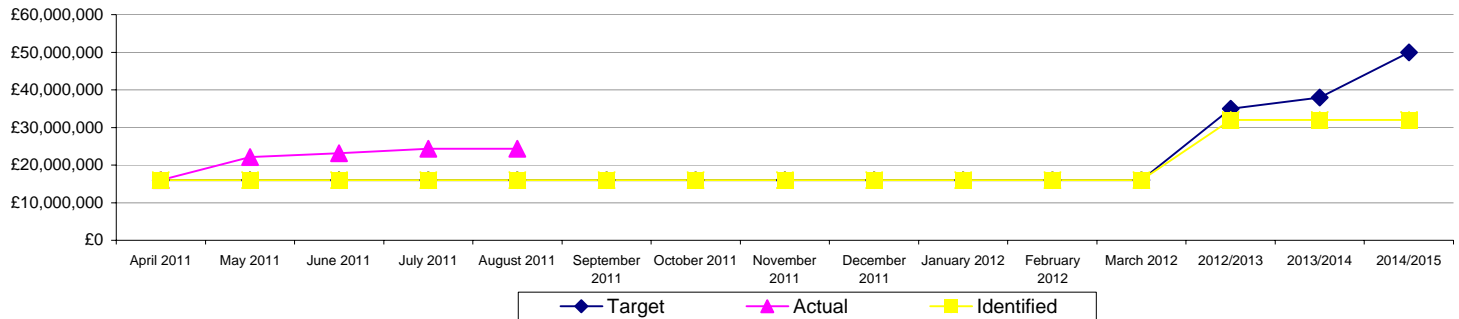
Finance

	Savings		
	Target	Actual	Identified
April 2011	£16,000,000	£16,000,000	£16,000,000
May 2011	£16,000,000	£22,155,000	£16,000,000
June 2011	£16,000,000	£23,164,000	£16,000,000
July 2011	£16,000,000	£24,309,000	£16,000,000
August 2011	£16,000,000	£24,337,000	£16,000,000
September 2011	£16,000,000		£16,000,000
October 2011	£16,000,000		£16,000,000
November 2011	£16,000,000		£16,000,000
December 2011	£16,000,000		£16,000,000
January 2012	£16,000,000		£16,000,000
February 2012	£16,000,000		£16,000,000
March 2012	£16,000,000		£16,000,000
2012/2013	£35,000,000		£32,000,000
2013/2014	£38,000,000		£32,000,000
2014/2015	£50,000,000		£32,000,000
Total	£50,000,000		£44,500,000

National position for value for money
7 of 41

Note: National position excludes Metropolitan Police and City of London Police

Savings



The savings chart shows:

- Savings target - across all four years i.e. cumulatively this is £16m, £35m, £38m, £50m
- Savings actual - this is the base budget reduction +/- the in year projected over/underspend
- Savings identified - this is helpful to see the value of savings identified

The combination of data shows how much savings have been identified against the savings targets. It also shows how much is being saved against target

Note:

- If the pink line (actual) is above the blue line (target) then we are underspending in year (saving more than the savings target)
- The yellow line (savings identified) needs to reach the blue line (target) in order to identify sufficient savings to meet the target
- On 12 September 2011, the Finance Committee approved £3.777m of contributions to reserves which reduces actual savings from September

Protecting the frontline

The number of full time equivalents (FTE) undertaking response policing, neighbourhood policing and local crime investigation will be protected at a minimum of 2224 on average per month throughout 2011-2012

Frontline Staff	Target	Average
September 2011	2224	2227