

Performance Profile

August 2009



Summary

2009/10 Reporting Year

This document contains a strategic overview of the Constabulary's performance. It has a variety of performance measures within it. The format of the profile has been aligned to the Policing Priorities identified by the Control Strategy. It provides information on our performance against Force targets, some of the APACS Statutory Performance Indicators (SPI) and the Policing Pledge. It also aims to provide supplementary information to assist in understanding reasons behind the performance in these areas. It has been designed as a headline document that will enable our customers, both internally and externally, to easily assess performance information for key domains.

At the front of the document there are several matrices that reflect our performance against our targets, firstly year to date and secondly relevant for that particular month.

Performance in key areas is then explored in more depth with an indication of where each measure has originated - for example, APACS Statutory Performance Indicator (SPI) or a Force Control Strategy (FCS) measure.

Where applicable, within the document, MSG (Most Similar Group) data is published along with the crime and detection data. MSGs are calculated by the Home Office based on a number of socio-demographic & geographic variables which are strongly linked to crime/incident levels and the fear of crime. These groups provide a benchmark for comparison of crime and detection rates. Below the applicable crime tables there are three rows relating to MSG data. The first provides the MSG position for the OCU/Force for that crime type. The second displays OCU Actual, this is the number of offences per 1,000 population. The third row shows the MSG Average which is the total number of offences per 1,000 population divided by the number within the MSG. The same three rows are provided in relation to detection data, where data is provided in % figures rather than per 1,000 population.

Please note: iQuanta data is provisional. Within the profile, Hampshire data is published and compared against the MSG average. The other forces within Hampshire's MSG are: Avon and Somerset, Bedfordshire, Essex Hertfordshire, Kent, Sussex and Thames Valley. We are unable to provide figures from iQuanta for these forces, due to the provisional nature of this data.

This document is then taken forward by key stakeholders within the organisation to the Force Performance Review Group, where it is used to highlight areas of good performance and those for development.

Crime OCU contribute to the following areas within this document, either via investigation, forensic support, and/or review of these crimes: homicide, serious violent, sexual and acquisitive crime, class A drug seizures, domestic violence/hate crime, burglary (Op Nemesis), FIU form submissions, gun/knife crime (where this results in a major investigation/forensic support), SO assistance to TO, sickness and PDRs.

This is an evolving document and as such, the content may alter over time and any feedback would be welcomed by the Performance Review Team.

MSG Colour Key	Force	OCU
	1-2	1-4
	3-4	5-8
	5-6	9-12
	7-8	13-15

Year to date and Monthly performance matrices

4-6 including notes on matrices terminology

Policing Pledge Scorecard

7 Policing Pledge Scorecard

Providing an excellent service

8	National public confidence measure	SPI 2.2	FCS	iQuanta
8	Local confidence survey data			Consultation & Research Team
8	Overall satisfaction	SPI 1.1	FCS	Consultation & Research Team
8	Being kept informed		FCS	Consultation & Research Team
9	Comparative satisfaction of minority ethnic groups	SPI 1.2		Consultation & Research Team
9	Satisfaction of victims of racist incidents	SPI 1.3		Consultation & Research Team
9	MSG user satisfaction data			Consultation & Research Team
9-10	Responding to victims of crime			Citizen Focus Inspector
10	Letters of appreciation, reports of incivility, expression of dissatisfaction			Professional Standards Department
11	Responding to public contact (inc call handling data)			Call Management

An active presence in every neighbourhood

12	Rowdy and nuisance behaviour		FCS	Business Objects
12	Vehicle nuisance/Inappropriate vehicle use		FCS	Business Objects
13	Safer Neighbourhood Teams			CARM team & Personnel
14	Criminal damage		FCS	Business Objects

Catching criminals and managing offenders

15	All crime and sanction detections		FCS	Business Objects
16	Serious violent crime, sanction detections and OBJT rate	SPI 5.1&6.1	FCS	Business Objects
17	Assault with less serious injury	SPI 5.3	FCS	Business Objects
18	Serious acquisitive crime, sanction detections and OBJT rate	SPI 5.2&6.2	FCS	Business Objects
19	Serious acquisitive crime breakdown			Business Objects
20	Gun and knife crime	SPI5.5&5.6		Business Objects
20	Serious sexual crime OBJT rate	SPI 6.4		Criminal Justice Department
20	Murder offences incl domestic murders	SPI5.4	FCS	Business Objects
20	FIU1 submission levels		FCS	Force Intelligence
20	PPO convictions	SPI 10.1	FCS	Criminal Justice Department
20	Class A drugs sanction detections		FCS	Business Objects
20	Drug seizures			Performance Review Team
20	Organised Crime Groups			7 OCU performance team

Protecting our communities

21	Domestic violence and abuse		FCS	Business Objects
21	Repeat incidents of domestic violence cases reviewed at MARAC	SPI14.1		Special Investigations Department
21	Hate crime detection rate		FCS	Business Objects
22	Road traffic casualties	SPI 9.1	FCS	8 OCU performance team

Making the most of our resources

23	Police officer sickness	SPI 13.1	FCS	PRT - Delphi + Personnel - Staffing Figures
23	Police staff sickness	SPI 13.2		PRT - Delphi + Personnel - Staffing Figures
24	Overdue PDRs			Personnel
25	NCRS compliance - peer audits only		FCS	Force Incident & Crime Registrar
25	Budget spend	SPI12.1	FCS	Finance
25	Efficiency savings		FCS	Finance
26	SO support to TO			7 and 8 OCU performance teams

Equipping our team to deliver

27	Financial awareness training		FCS	Training Department
27	Preparing for frontline supervision			Training Department
27	Mobile data			Not yet available
27	Minority ethnic officer recruitment	SPI 3.1		Personnel
27	Female officer representation	SPI 3.2		Personnel

Restricted data

Year to date performance targets matrix

	Target	Actual	Central	Isle of Wight	North & East	Portsmouth	Southampton	Western
Providing an excellent service								
Confidence in local police	>51.3%	49.3%	This is a Force measure					
Overall satisfaction (data for rolling 12 months)	>65.0%	65.0%	67.0%	72.0%	63.0%	66.0%	61.0%	65.0%
An active presence in every neighbourhood								
Rowdy & nuisance behaviour	31483	30811	5950	2014	5220	5232	7114	5281
	OCU specific targets		5827	2242	6076	4799	7411	5129
Vehicle nuisance / inappropriate vehicle use	6276	5166	1281	383	1031	510	976	985
	OCU specific targets		1459	419	1276	541	1186	1395
Reduce criminal damage	14351	13577	3114	947	2724	1738	2701	2353
	OCU specific targets		3164	1052	2758	1945	2781	2651
Catching criminals & managing offenders								
All crime	68131	64620	13909	4219	12120	10243	12795	11334
	OCU specific targets		13884	4442	12899	10620	14290	11996
All crime SD	>25%	26.0%	24.2%	30.0%	26.3%	26.9%	26.6%	25.1%
	OCU specific targets		25.0%	30.0%	25.5%	25.5%	25.0%	25.0%
Serious violent crime	380	409	64	42	63	62	125	53
	OCU specific targets		72	26	60	76	98	47
Serious violent crime SD	>50%	52.6%	71.9%	45.2%	65.1%	46.8%	39.2%	58.5%
	OCU specific targets		57.0%	60.0%	56.0%	41.0%	45.0%	50.0%
Assault with less serious injury	5782	6200	1236	454	1037	1080	1430	963
	OCU specific targets		1216	407	1025	836	1362	936
Serious sexual offences (OBTJ)	Data being	developed	This is a Force measure					
Serious acquisitive crime	9388	8010	1629	350	1533	1395	1532	1571
	OCU specific targets		1715	385	1841	1652	2050	1746
Serious acquisitive crime SD	>15%	12.7%	11.0%	17.1%	13.5%	15.2%	11.0%	12.2%
Class A drugs SD*	>168	158	13	7	22	19	33	64
	OCU specific targets		21.0	16.8	33.5	33.5	41.9	21.0
Organised crime group (OCG) - disruptions	>10	No data	Owned by Crime OCU					

Year to date performance targets matrix

	Target	Actual	Central	Isle of Wight	North & East	Portsmouth	Southampton	Western
Protecting our communities								
Domestic crimes arrest rate	>80%	77.1%	75.8%	74.5%	78.5%	79.9%	78.0%	74.7%
Hate crime SD	>45%	47.9%	48.5%	53.3%	46.8%	49.3%	52.3%	33.3%
Road traffic casualties	<297	274	Owned by Operations OCU					
Making the most of our resources								
Police officer sickness *	<3.14		No data available for August profile					
Police staff sickness *	<3.14		No data available for August profile					
Budget spend	<33%	31%	33%	30%	33%	33%	34%	32%
Efficiency savings 2008-2011 (£m)	>33	26.8	This is a Force measure					
Equipping our staff to deliver								
Financial awareness training			Data not suitable for matrix					
Preparing for frontline supervision			Data not suitable for matrix					
Mobile data			Data not suitable for matrix					
Force Total - targets achieved	11		8	9	9	11	7	9

Notes to be read in conjunction with matrices

All citizen focus data

OBTJ

Road traffic casualties

Budget spend

Efficiency savings

SD

Sickness data

OCU specific targets

Based on "completely or very satisfied"

Offenders Brought To Justice - current data is to June 2009

All data until 31 July 2009

Data is always one month in arrears

For information on this target see page 25 of this Profile

Sanction detections

Force Actual = total for ALL officers/police staff - including those not in OCU

OCU specific targets are rounded to 2 decimal places; the actual figure

may therefore seem the same but appear red due to this rounding

Monthly performance targets matrix

This matrix is based on monthly data compared to Force targets

	Target	Actual	Central	Isle of Wight	North & East	Portsmouth	Southampton	Western
An active presence in every neighbourhood								
Rowdy & nuisance	6379	6192	1211	363	970	1114	1394	1140
	OCU specific targets		1181	454	1231	972	1502	1039
Vehicle nuisance / inappropriate vehicle use	1272	1095	257	99	204	104	209	222
	OCU specific targets		296	85	258	110	240	283
Reduce criminal damage	2908	2411	534	178	475	333	479	412
	OCU specific targets		641	213	559	394	563	537
Catching criminals & managing offenders								
All crime	13804	12483	2680	823	2330	2029	2466	2155
	OCU specific targets		2813	900	2614	2152	2895	2431
All crime (SD)	25.0%	26.9%	25.1%	29.4%	28.0%	25.9%	28.8%	25.6%
	OCU specific targets		25.0%	30.0%	25.5%	25.5%	25.0%	25.0%
Serious violent crime	77	82	11	14	15	12	20	10
	OCU specific targets		15	5	12	15	20	9
Serious violent crime SD	>50%	42.7%	72.7%	28.6%	33.3%	16.7%	60.0%	40.0%
	OCU specific targets		57.0%	60.0%	56.0%	41.0%	45.0%	50.0%
Assault with less serious injury	1172	1268	254	116	189	203	307	199
	OCU specific targets		246	82	208	169	276	190
Serious acquisitive crime	1902	1563	309	57	297	272	329	299
	OCU specific targets		347	78	373	335	415	354
Serious acquisitive crime SD	>15%	11.8%	12.9%	21.1%	12.1%	8.1%	12.2%	11.4%
Serious sexual offences (OBTJ)	Data being	developed	This is a Force measure					
Class A drugs SD	>34	29	1	2	3	3	19	1
Protecting our communities								
Domestic crimes arrest rate	>80%	74.8%	76.6%	67.6%	76.9%	75.0%	75.1%	73.5%
Hate crime SD	>45%	56.8%	88.2%	0.0%	33.3%	50.0%	70.6%	33.3%
Making the most of our resources								
Police officer sickness	<0.625		No data available for August profile					
Police staff sickness	<0.625		No data available for August profile					
Force Total - targets achieved	8		8	5	7	7	9	5

Hampshire Constabulary Policing Pledge Scorecard

Pledge	YTD 2009/2010
--------	------------------

Percentage of respondents tending to 'agree' or 'strongly agree' that: 'The police and local council are dealing with the anti-social behaviour and crime issues that matter in this area'	49.3%
--	-------

Pledge 1 - Treat people fairly with dignity and respect, ensuring they have fair access to our services

Percentage of respondents answering 'strongly agree' or 'tend to agree' when asked 'The police in this area treat everyone fairly regardless of who they are'	67.3%
---	-------

Pledge 2 - Help promote our dedicated Safer Neighbourhoods Teams to the local community, including where they live, how to contact them and how to work with them

Measure under development - dip sampling of media/communications to be carried out

Pledge 3 - Ensure we are visible in our neighbourhoods at times when we will be most effective and when communities need us most. Safer Neighbourhoods teams will spend at least 80% of their time visibly working in neighbourhoods, tackling the most pressing priorities

Safer Neighbourhood Team abstractions	See
Safer Neighbourhood Team vacancy rate	In p

Pledge 4 - Respond to every message directed to every Safer Neighbourhood Team within 24 hours and, where necessary, provide a more detailed response as soon as we can

Measure under development - dip sampling of media/communications to be carried out

Pledge 5 - Aim to answer 999 calls within 10 seconds, deploy to emergencies immediately and give an estimated time to arrive, provide assistance to callers as safely and quickly as possible, aiming to get to them within 15 minutes

No. of 999 calls	115293
%age of 999 calls answered within 10 seconds	92.4%
%age of Grade 1 calls attended within 15 minutes	90.1%

Pledge 6 - Answer all non emergency calls promptly. If attendance is needed, agree with the caller an acceptable time to attend

No of non emergency calls	343945
%age of non emergency calls answered within 10 seconds	88.1%
Scheduling pilot permanent reporting in progress	In p

Pledge 7 - Create opportunities to meet them at least once a month to agree or update neighbourhood priorities. Arrange regular meetings, street briefings, mobile police station visits and similar by keeping beat web pages up to date and providing an online postcode search to our communities so that they can be kept up to date

Measure under development - dip sampling of media/communications to be carried out

Pledge 8 - Provide monthly updates on what action we and our partners are taking to make neighbourhoods safer and how the force is performing

Regular neighbourhood performance data is published on the Internet	5 times
---	---------

Measure under development - other monitoring to be carried out

Pledge 9 - Agree with victims of crime how often they would like to be kept informed of progress in their case and for how long. Ensure victims have the right to be kept informed at least every month if they wish and for as long as is reasonable

Satisfaction of victims with respect to being kept informed (very / fairly satisfied)	55.0%
% where the victim was has been updated on a monthly basis	97.4%
Compliance with victims contact as part of the Victims' Code	See

Pledge 10 - Acknowledge any dissatisfaction with the service brought to our attention within 24 hours of it being reported and ensure that appropriate steps are taken to resolve concerns

Reports of incivility	74
-----------------------	----

Providing an excellent service

British Crime Survey Confidence Data

SPI 2.2 Force Target

This data is updated by iQuanta approximately every quarter

National Public Confidence Measure

Mar-09

Hampshire	49.3%
MSG Position	3 of 8
MSG average	48.5%

This data is based on 'The police and local council are dealing with the anti-social behaviour and crime issues that matter in this area'

The Home Office has set a target to achieve a 12% improvement by 2012 against the baseline of 47.3%

This year's required improvement is 4%

Local Confidence Survey Data

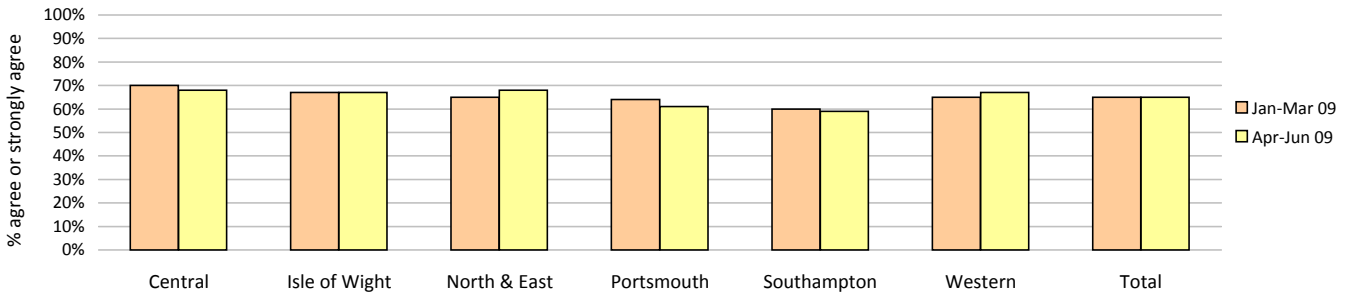
Figures relate to the percentage of respondents who agree or strongly agree with the question

Hampshire's local surveys have a confidence level of +/-4%. This means that changes of less than 4% may not reflect a real change in performance

These data will be updated on a quarterly basis with the next data available in the June profile

The police and local council are dealing with the anti-social behaviour and crime issues that matter in this area

	Central	Isle of Wight	North & East	Portsmouth	Southampton	Western	Total	No. Surveys
January - March 2009	70%	67%	65%	64%	60%	65%	65%	3594
April - June 2009	68%	67%	68%	61%	59%	67%	65%	3591



The police are dealing with the things that matter locally

	Central	Isle of Wight	North & East	Portsmouth	Southampton	Western	Total	No. Surveys
April - June 2009	71%	69%	66%	63%	65%	70%	67%	3591



Overall satisfaction (user satisfaction survey results)

SPI 1.1 Force Target

Rolling 12 months data relates to: Sep 08 - Aug 09; rolling 3 months data relates to Jun 09 - Aug 09

Overall satisfaction includes burglary, vehicle crime, violent crime and minor injury RTCs

Target 65%	Central	Isle of Wight	North & East	Portsmouth	Southampton	Western	Total	No. Surveys
Rolling 12 months	67%	72%	63%	66%	61%	65%	65%	7844
Rolling 3 months	70%	66%	63%	65%	58%	65%	64%	2457

Being kept informed (user satisfaction survey results)

Rolling 12 months data relates to: Sep 08 - Aug 09; rolling 3 months data relates to Jun 09 - Aug 09

Being kept informed includes burglary, vehicle crime, violent crime and minor injury RTCs

	Central	Isle of Wight	North & East	Portsmouth	Southampton	Western	Total	No. Surveys
Rolling 12 months	58%	61%	53%	54%	53%	57%	55%	7582
Rolling 3 months	61%	56%	53%	54%	50%	56%	55%	2343

Providing an excellent service

Comparative satisfaction of minority ethnic groups

SPI 1.3

Data relates to interviews which took place Jun 09 - Aug 09

These figures are for overall satisfaction for burglary, vehicle crime, violent crime, minor injury RTCs and racist incidents

	Completely and very satisfied	Completely, very and fairly satisfied
White	65.9%	84.2%
Minority Ethnic	53.6%	78.7%

Satisfaction of victims of racist incidents

SPI 1.2

These figures relate to interviews which took place Jul 08 - Jun 09; these will be updated quarterly

Racist incident overall satisfaction = % completely or very satisfied

	Central	Isle of Wight	North & East	Portsmouth	Southampton	Western	Total
%	67%	33%	51%	57%	57%	50%	56%
Number of surveys	24	3	35	28	35	24	149

MSG information for user satisfaction

iQuanta data for MSG for the 12 months up to March 09 (iQuanta calculate satisfaction % based on those responding that they are completely, very or fairly satisfied)

Vehicle crime

Ease of contact	2/8
Actions taken	4/8
Follow up	4/8
Treatment	4/8
OVERALL	4/8

Burglary

Ease of contact	2/8
Actions taken	3/8
Follow up	1/8
Treatment	3/8
OVERALL	2/8

Violent crime

Ease of contact	2/8
Actions taken	1/8
Follow up	5/8
Treatment	2/8
OVERALL	2/8

RTC (minor injury)

Ease of contact	1/8
Actions taken	2/8
Follow up	4/8
Treatment	2/8
OVERALL	2/8

All users (excluding racist incidents)

Ease of contact	4/8
Actions taken	2/8
Follow up	3/8
Treatment	2/8
OVERALL	2/8

Responding to victims of crime

Pledge Point 9

Hampshire Constabulary has always valued victim care. With the introduction of the Policing Pledge, this section will be used not only to inform how we manage our victims of crime, but our progress and actions that relate to the Pledge.

Particular emphasis surrounds compliance with the Victims' Code - keeping people updated - and it is this area that is currently reported on.

Other commitments from the Pledge will be periodically reported on.

Summary results of Dip-sample Victim Code Compliance checks

(latest month for available data followed by YTD)

% where victim was informed within 5 days of an investigation being closed

	Central	Isle of Wight	North & East	Portsmouth	Southampton	Western	Crime	Total
July 2009	100%	100%	100%	95%	100%	100%	100%	99%
YTD	100%	100%	100%	98%	100%	99%	100%	100%

% where the victim has been updated on a monthly basis (if applicable)

	Central	Isle of Wight	North & East	Portsmouth	Southampton	Western	Crime	Total
July 2009	100%	95%	85%	95%	100%	100%	100%	96%
YTD	100%	95%	88%	99%	100%	100%	100%	97%

% where the victim was notified upon filing (if applicable)

	Central	Isle of Wight	North & East	Portsmouth	Southampton	Western	Crime	Total
July 2009	100%	100%	100%	95%	100%	100%	100%	99%
YTD	98%	98%	93%	99%	100%	99%	100%	98%

Note: Victim Code Compliance data is published one month in arrears

Note: Absence of data for Operations OCU - the only crime investigations that are retained for resolution by 8 OCU officers are public order or drug offences where the victim is 'The State'. Other crimes are transferred to 'TO' OCUs for any further investigation required. Road traffic collisions resulting in death could be included but this is a small sample. The option to dip-sample other RTCs (minor and serious injury) for contact with injured or aggrieved parties could be used but these are not within the requirements of the Victims' Code. This would only include RPU in the sample and not other 8 OCU teams

Providing an excellent service

Victim support status for crimes

YTD to August 2009	Central	Isle of Wight	North & East	Portsmouth	Southampton	Western	Total	Total %
Victim informed of VSS accepted	1310	338	1252	910	1764	1103	6677	10.34%
Victim informed of VSS declined	8878	2557	7680	5841	7904	6760	39620	61.35%
VSS aware	438	96	238	118	138	546	1574	2.44%
Victimless crime	3184	1165	2949	3008	2754	2733	15793	24.46%
Not stated	58	63	1	366	235	192	915	1.42%
Total crimes	13868	4219	12120	10243	12795	11334	64579	N/A
% referred	12.60%	10.29%	12.29%	10.04%	14.87%	14.55%	12.78%	N/A

Month of August 2009	Central	Isle of Wight	North & East	Portsmouth	Southampton	Western	Total	Total %
Victim informed of VSS accepted	247	56	224	159	294	211	1191	9.54%
Victim informed of VSS declined	1706	531	1466	1137	1477	1239	7556	60.54%
VSS aware	50	20	41	33	28	132	304	2.44%
Victimless crime	629	186	598	584	517	441	2955	23.68%
Not stated	46	30	1	116	150	132	475	3.81%
Total crimes	2678	823	2330	2029	2466	2155	12481	N/A
% referred	11.09%	9.23%	11.37%	9.46%	13.06%	15.92%	11.98%	N/A

Letters of appreciation

	Central	Isle of Wight	North & East	Portsmouth	Southampton	Western	Crime	Operations	Other	Total
April 2009	9	5	13	27	0	5	5	13	11	88
May 2009	10	11	13	0	3	11	2	6	31	87
June 2009	9	13	12	3	7	11	15	3	19	92
July 2009	21	7	24	10	3	7	9	0	0	81
Total	49	36	62	40	13	34	31	22	61	348

Note: These figures are published one month in arrears

Reports of incivility

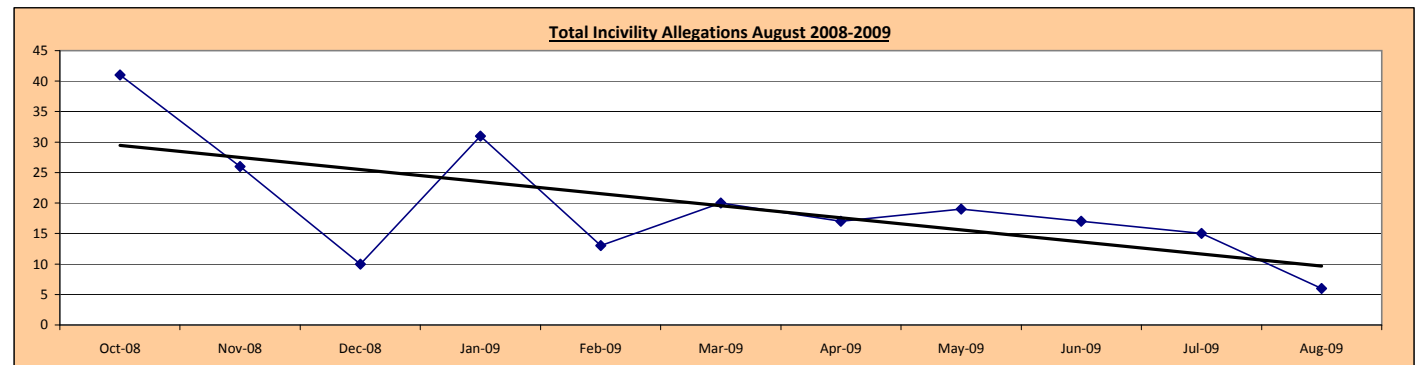
Pledge Point 10

	Central	Isle of Wight	North & East	Portsmouth	Southampton	Western	Crime	Operations	Other	Total
April 2009	2	3	1	3	0	2	0	6	0	17
May 2009	2	4	5	1	2	3	0	1	1	19
June 2009	7	2	1	0	0	3	0	4	0	17
July 2009	1	2	1	3	1	2	0	5	0	15
2009	0	1	1	0	4	0	0	0	0	6
Total	12	12	9	7	7	10	0	16	1	74

NOTE: OCU complaints totals may include complaints regarding officers who are serving within the area but are not located at that OCU

NOTE: Data/figures may change due to additional or new information and there may be multiple allegations per complaint

By month	Oct 08	Nov 08	Dec 08	Jan 09	Feb 09	Mar 09	Apr 09	May 09	Jun 09	Jul 09	Aug 09
Incivility	41	26	10	31	13	20	17	19	17	15	6



This graph shows the downward trend for the volume of incivility allegations. The "Linear (incivility)" shows the trajectory of this downward trend

Allegations and their resolutions

Data for August 2009

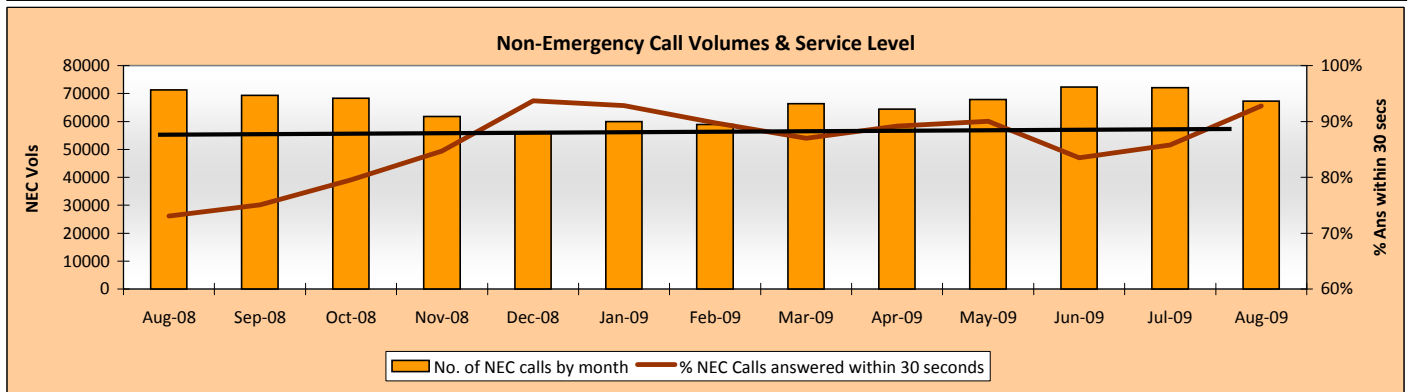
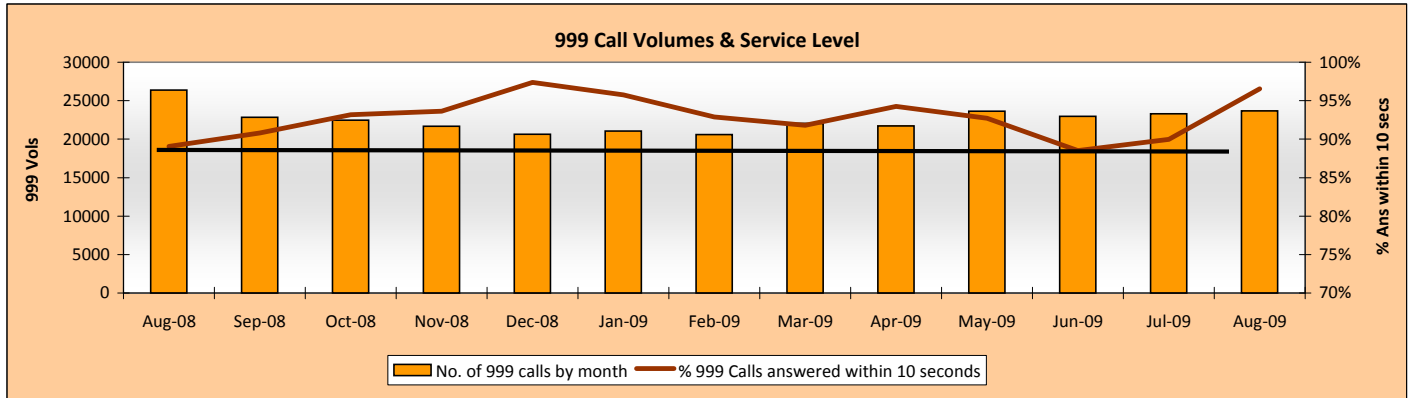
Locally resolved by OCU	64
Locally resolved by PSD	15
Withdrawn	2
Dispensed by IPCC	4
Unsubstantiated	4
Substantiated	2
Total	91

Providing an excellent service

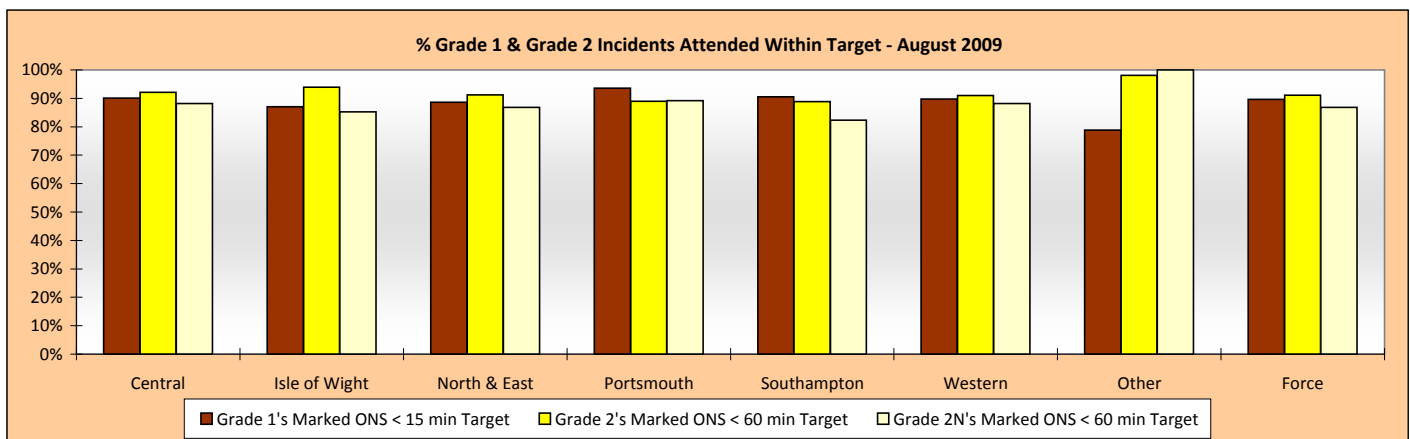
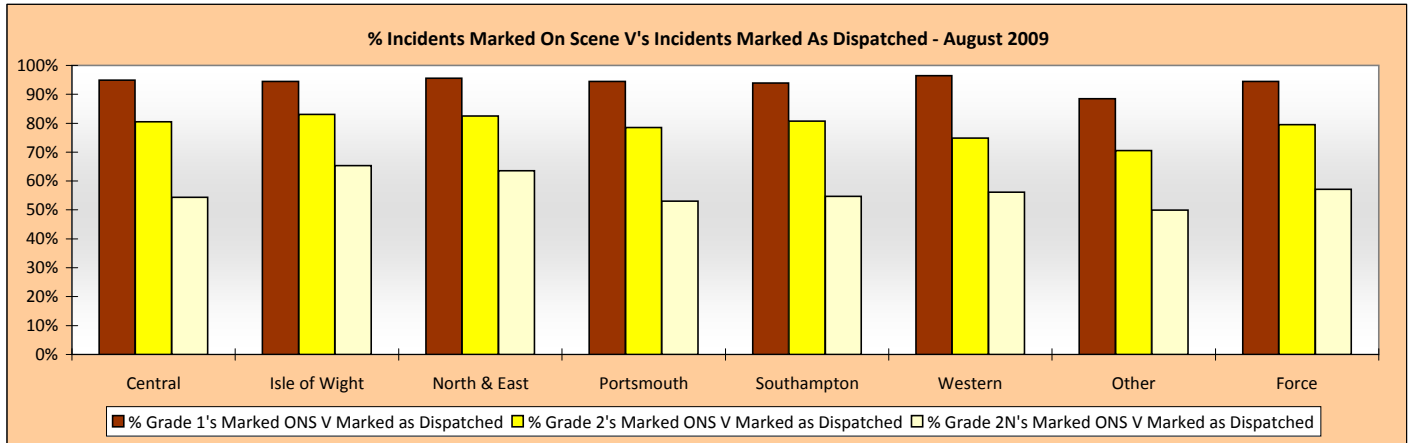
Responding to public contact

Pledge Points 5 & 6

Call Volumes: Target is to answer 90% of 999 calls within 10 seconds and 90% of Non-Emergency calls within 30 seconds



Officers Attended Within Target: This is the time from an incident being created to the 1st Officer being marked on scene on Altaris. The % of Officers attending within target is based on the number of incidents marked on scene within target vs. the number of incidents marked on scene. If an incident is marked as having an officer dispatched, but is then subsequently not marked as On Scene, these incidents are excluded from the % Attendance.

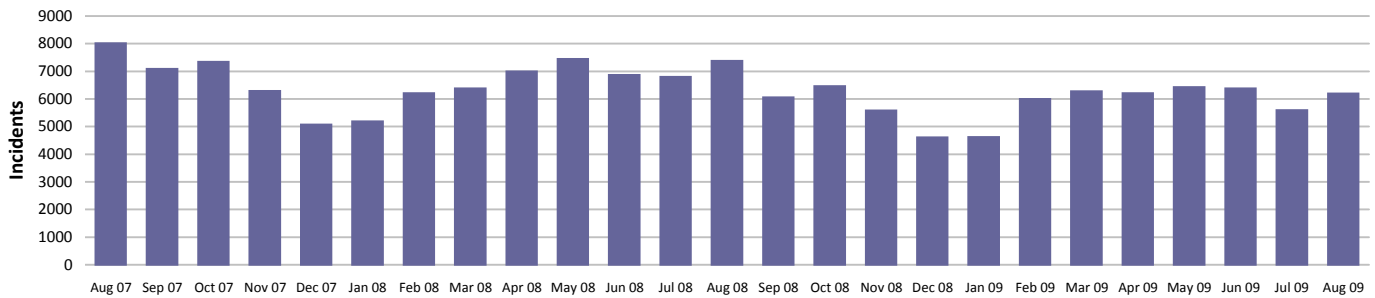


An active presence in every neighbourhood

Rowdy & nuisance behaviour

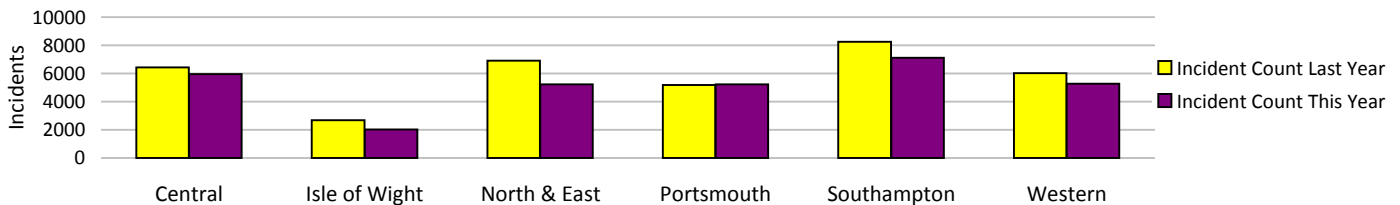
Force Target

This year the decision has been made to use RMS as the source of this data, as opposed to the NSIR return data (the figures published in the 2008/2009 Force Performance Summary used the NSIR data)



Incidents	Central	Isle of Wight	North & East	Portsmouth	Southampton	Western	Total
YTD Incidents	5950	2014	5220	5232	7114	5281	30811
YTD Target	5827	2242	6076	4799	7411	5129	31483
YTD 08/09 Incidents	6427	2680	6912	5193	8244	6027	35483
This month	1211	363	970	1114	1394	1140	6192
% change from 08/09	-7.42%	-24.85%	-24.48%	0.75%	-13.71%	-12.38%	-13.17%

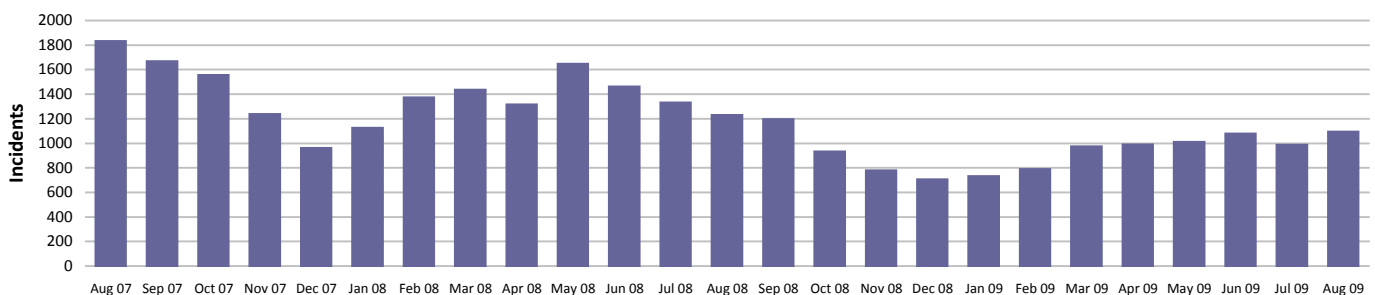
Rowdy & nuisance behaviour relates to occurrence types: Inappropriate use of Fireworks, Rowdy & Inconsiderate, Substance Misuse and Street Drinking



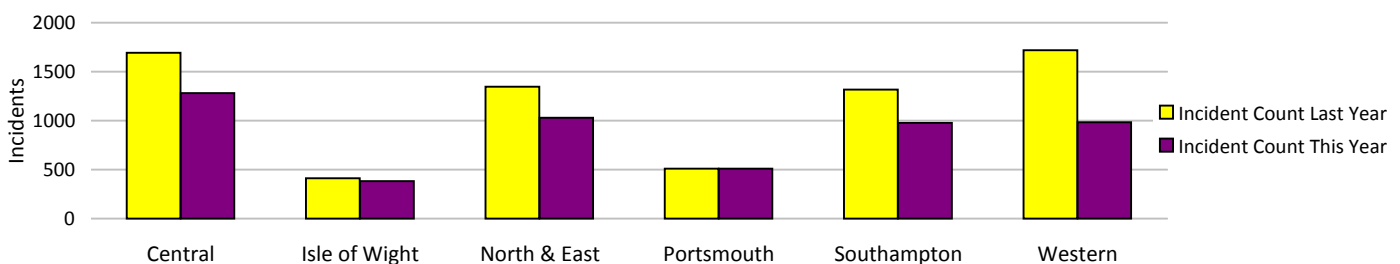
Vehicle nuisance/inappropriate vehicle use

Force Target

This year the decision has been made to use RMS as the source of this data, as opposed to the NSIR return data (the figures published in the 2008/2009 Force Performance Summary used the NSIR data)



Incidents	Central	Isle of Wight	North & East	Portsmouth	Southampton	Western	Total
YTD Incidents	1281	383	1031	510	976	985	5166
YTD Target	1459	419	1276	541	1186	1395	6276
YTD 08/09 Incidents	1694	411	1345	510	1317	1718	6995
This month	257	99	204	104	209	222	1095
% change from 08/09	-24.38%	-6.81%	-23.35%	0.00%	-25.89%	-42.67%	-26.15%



Note: MSG data is always published a month in arrears. For an explanation of this data, refer to the Summary on page 2 August 2009

An active presence in every neighbourhood

Safer Neighbourhood Teams (SNT)

Policing pledge 3

Work is currently being undertaken by Headquarters and Local Resource Teams to develop a consistent, forcewide definition of a SNT abstraction. On completion of this work the publishing of SNT Abstraction Data will resume within the profile.

Community engagement data

Anticipated initially for July, there have been difficulties in obtaining the data which should now be available from the autumn

Safer Neighbourhood Team Personnel

	Inspector	Segeant	Constable	Total
Central	9	29	89	127
IOW	2	9	32	43
North and East	11	16	77	104
Portsmouth	4	14	51	69
Southampton	7	14	62	83
Western	7	19	78	104
Total	40	101	389	530

SNT strength by OCU - Police

	Central	Isle of Wight	North & East	Portsmouth	Southampton	Western
Strength	120.8	40.58	100.5	67.65	80.81	100.1

SNT establishment and strength by OCU - PCSOs

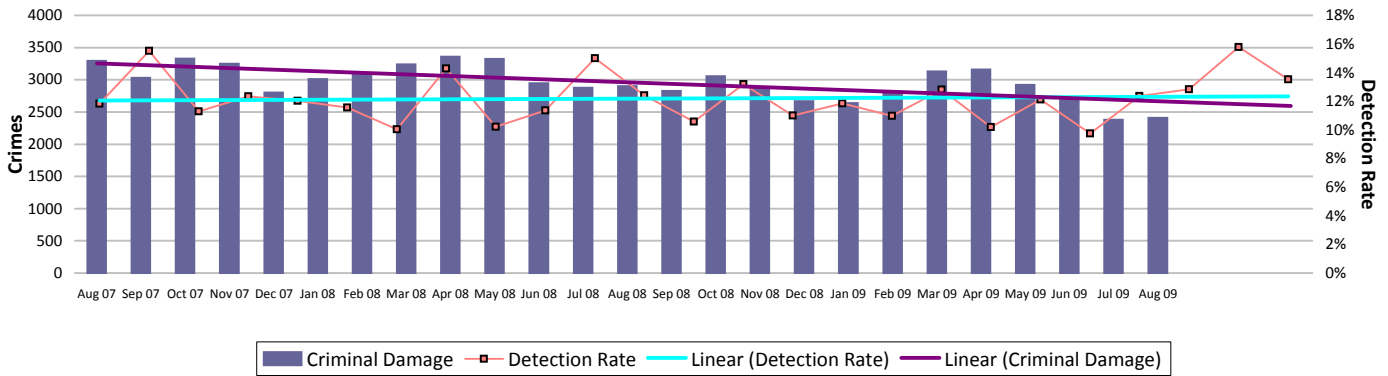
	Central	Isle of Wight	North & East	Portsmouth	Southampton	Western
Establishment	74	28	67	50	59	59
Strength	77	27.09	67.4	48.12	59.35	60.94
Vacancies	-3	0.91	-0.4	1.88	-0.35	-1.94

Note: Personnel Planning are no longer able to provide 'length of service' information due to the implementation of the new organisation structure into Delphi. This has meant that all Staff and Police Officers have a position start date of 8 July 2009

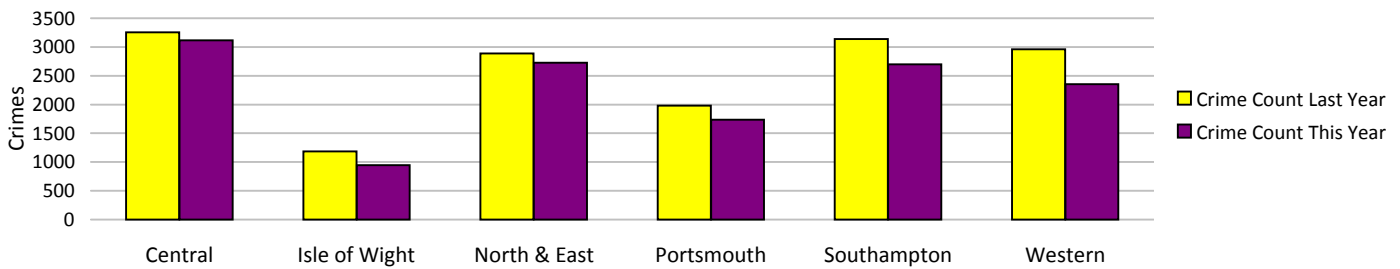
An active presence in every neighbourhood

Criminal damage

Force Target

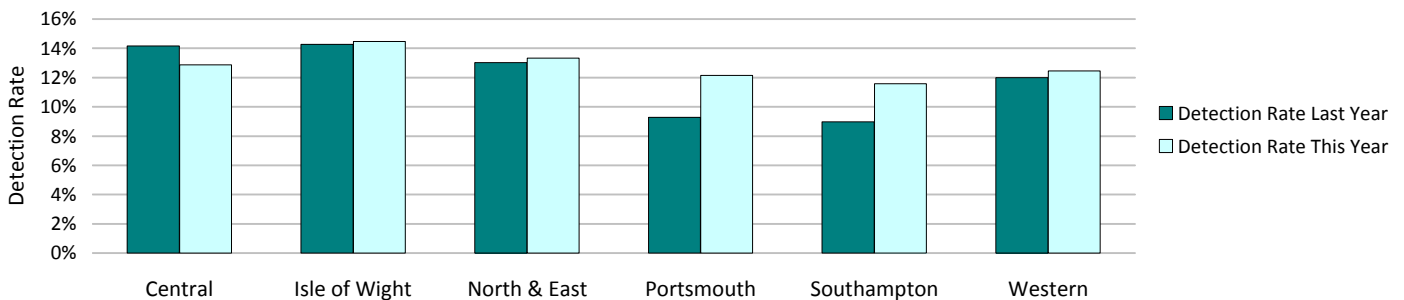


Crimes	Central	Isle of Wight	North & East	Portsmouth	Southampton	Western	Total
YTD Crimes	3114	947	2724	1738	2701	2353	13577
YTD Target	3164	1052	2758	1945	2781	2651	14351
YTD 08/09 Crimes	3253	1184	2888	1983	3139	2959	15406
This month	534	178	475	333	479	412	2411
% change from 08/09	-4.27%	-20.02%	-5.68%	-12.36%	-13.95%	-20.48%	-11.87%
MSG position	14 of 15	10 of 15	14 of 15	11 of 15	15 of 15	7 of 15	8 of 8
OCU actual	4.25	3.90	3.79	5.09	6.90	3.41	4.35
MSG average	3.51	3.87	3.32	4.67	5.09	3.45	3.70



Detections	Central	Isle of Wight	North & East	Portsmouth	Southampton	Western	Total
YTD Detection Rate	12.88%	14.47%	13.33%	12.14%	11.59%	12.45%	12.65%
This month	16.85%	10.11%	14.95%	12.31%	12.11%	11.65%	13.52%
YTD 08/09 Detections	14.17%	14.27%	13.02%	9.28%	8.98%	12.00%	11.86%
MSG position	10 of 15	8 of 15	10 of 15	10 of 15	11 of 15	8 of 15	6 of 8
OCU actual	11.90%	14.98%	11.94%	11.43%	10.42%	12.35%	11.82%
MSG average	13.45%	14.92%	14.16%	11.72%	12.09%	13.79%	14.30%

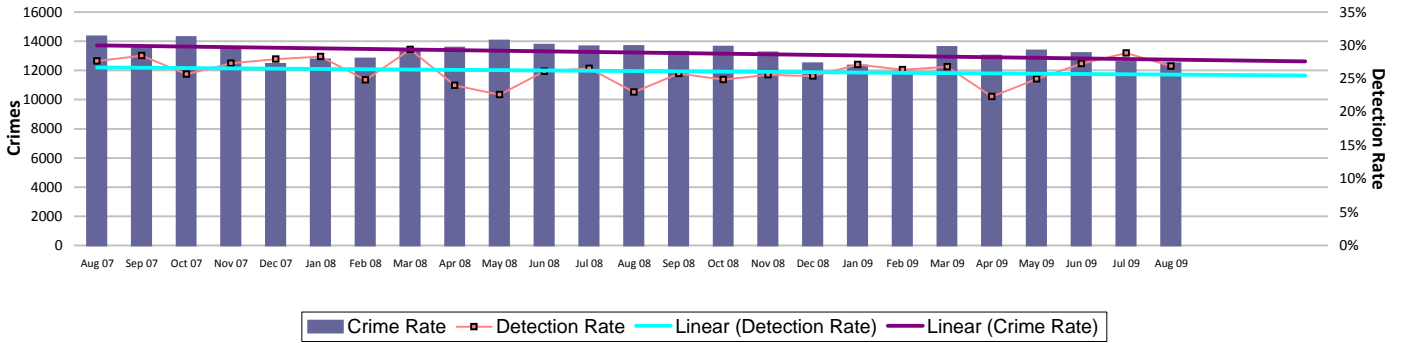
Note: Detections refer to Sanction Detections ONLY



Catching criminals and managing offenders

All crime

Force Target



Crimes	Central	Isle of Wight	North & East	Portsmouth	Southampton	Western	Total
YTD Crimes	13909	4219	12120	10243	12795	11334	64620
YTD Target	13884	4442	12899	10620	14290	11996	68131
YTD 08/09 Crimes	13968	4790	12930	10473	14095	12436	68692
This month	2680	823	2330	2029	2466	2155	12483
% change from 08/09	-0.42%	-11.92%	-6.26%	-2.20%	-9.22%	-8.86%	-5.93%
MSG position	13 of 15	10 of 15	11 of 15	13 of 15	13 of 15	7 of 15	6 of 8
OCU actual	19.25	18.68	17.30	31.19	33.50	16.94	21.30
MSG average	17.28	17.69	16.51	25.05	27.27	16.41	19.04



Detections	Central	Isle of Wight	North & East	Portsmouth	Southampton	Western	Total
YTD Detection Rate	24.21%	29.96%	26.34%	26.91%	26.57%	25.07%	26.03%
This month	25.07%	29.40%	27.98%	25.92%	28.83%	25.57%	26.87%
YTD 08/09 Detections	23.93%	31.59%	26.14%	24.84%	23.38%	21.44%	24.45%
Detection Targets	25.00%	30.00%	25.50%	25.50%	25.00%	25.00%	25.00%
MSG position	12 of 15	5 of 15	11 of 15	5 of 15	9 of 15	12 of 15	6 of 8
OCU actual	23.84%	32.85%	26.00%	26.16%	24.75%	24.78%	25.53%
MSG average	27.39%	30.70%	28.31%	25.35%	26.14%	26.89%	28.56%

Note: Detections refer to Sanction Detections ONLY

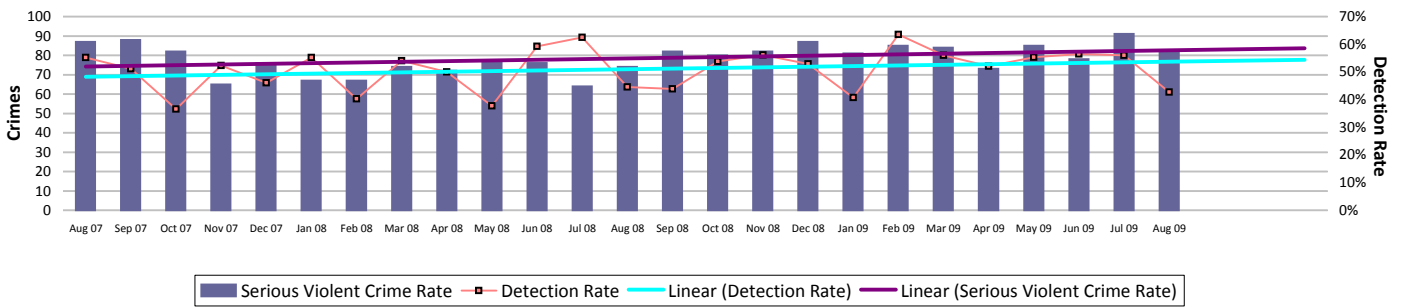


Catching criminals and managing offenders

Serious violent crime

SPI 5.1 Force Target

Serious violent crime consists of crimsec codes 1, 2, 4.1-4.4, 4.6, 4.8, 5A, 5B, 5C, 8F, 8H and 37.1

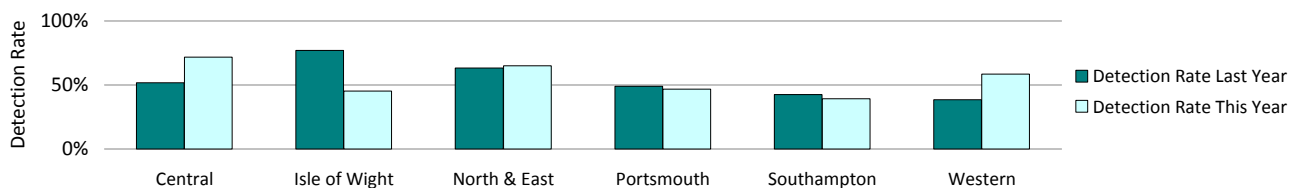


Crimes	Central	Isle of Wight	North & East	Portsmouth	Southampton	Western	Total
YTD Crimes	64	42	63	62	125	53	409
YTD Target	72	26	60	76	98	47	380
YTD 08/09 Crimes	87	26	49	55	94	52	363
This month	11	14	15	12	20	10	82
% change from 08/09	-26.44%	61.54%	28.57%	12.73%	32.98%	1.92%	12.67%
MSG position	10 of 15	10 of 15	9 of 15	2 of 15	12 of 15	7 of 15	6 of 8
OCU actual	0.10	0.17	0.09	0.18	0.35	0.08	0.14
MSG average	0.11	0.15	0.08	0.32	0.33	0.10	0.13



Detections	Central	Isle of Wight	North & East	Portsmouth	Southampton	Western	Total
YTD Detection Rate	71.88%	45.24%	65.08%	46.77%	39.20%	58.49%	52.57%
This month	72.73%	28.57%	33.33%	16.67%	60.00%	40.00%	42.68%
YTD 08/09 Detections	51.72%	76.92%	63.27%	49.09%	42.55%	38.46%	50.41%
Detection Targets	57.00%	60.00%	56.00%	41.00%	45.00%	50.00%	50.00%
MSG position	3 of 15	4 of 15	6 of 15	2 of 15	6 of 15	7 of 15	1 of 8
OCU actual	67.35%	60.61%	58.49%	43.50%	42.80%	55.42%	52.36%
MSG average	53.67%	51.27%	56.10%	37.91%	38.82%	56.00%	47.04%

Note: Detections refer to Sanction Detections ONLY



Serious Violent offences OBJ

SPI 6.1

Data to June 2009

	Recorded Crime		Total OBJTs		Hampshire		Rolling Average	
	Month	RA	Month	RA	Month	RA	MSG	E&W
Attempted murder	1	12	1	3	100.0%	25.0%	18.7%	21.0%
Death by aggravated vehicle taking	0	0	0	0	0.0%	0.0%	0.0%	57.1%
Causing death by dangerous driving etc	1	11	1	14	100.0%	127.3%	72.5%	67.2%
Homicide and child destruction	2	14	1	19	50.0%	135.7%	164.2%	133.0%
Wounding and GBH without intent	74	935	12	210	16.2%	22.5%	22.4%	19.4%

	Convictions	Caution	TICs	Cannabis Warning	PNDs
	Rolling 12 month Average				
Attempted murder	3	0	0	0	0
Death by aggravated vehicle taking	0	0	0	0	0
Causing death by dangerous driving etc	14	0	0	0	0
Homicide and child destruction	19	0	0	0	0
Wounding and GBH without intent	205	5	0	0	0

RA = Rolling Annual
E&W = England & Wales

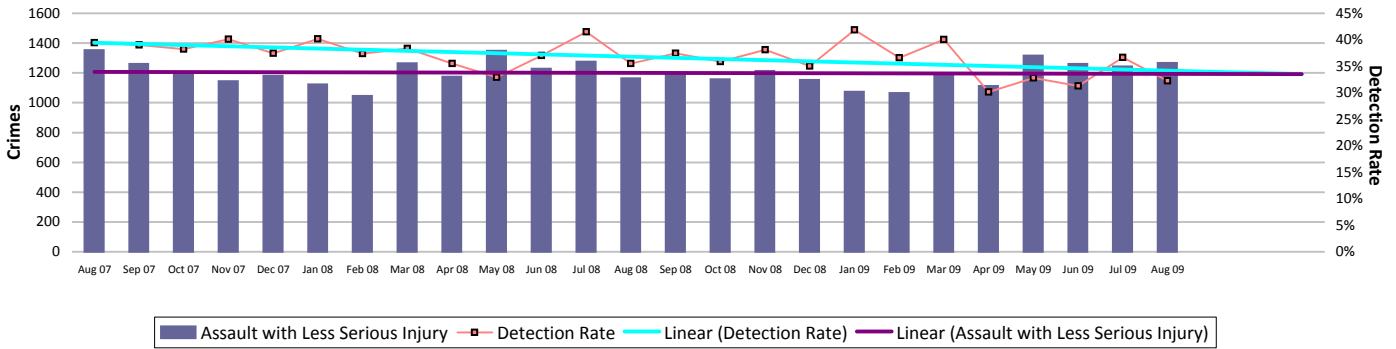
Note: MSG data is always published a month in arrears. For an explanation of this data, refer to the Summary on page 2

Catching criminals and managing offenders

Assault with less serious injury

SPI 5.3 Force Target

Assault with less serious injury consists of crimsec codes 8G and 8J

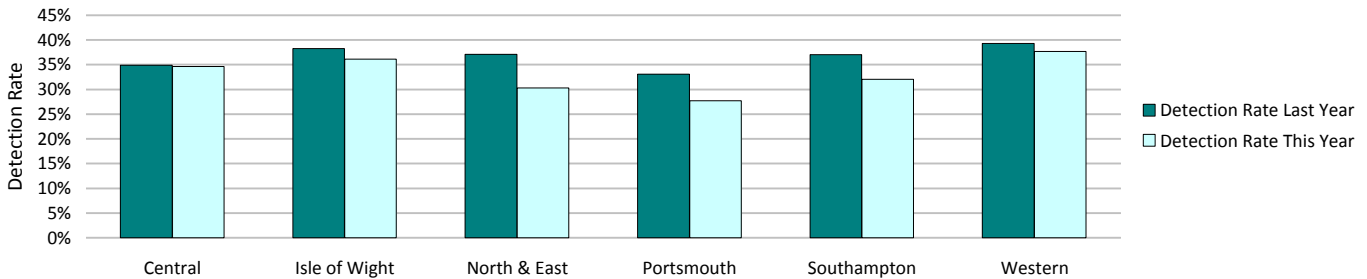


Crimes	Central	Isle of Wight	North & East	Portsmouth	Southampton	Western	Total
YTD Crimes	1236	454	1037	1080	1430	963	6200
YTD Target	1216	407	1025	836	1362	936	5782
YTD 08/09 Crimes	1289	439	1094	897	1493	977	6189
This month	254	116	189	203	307	199	1268
% change from 08/09	-4.11%	3.42%	-5.21%	20.40%	-4.22%	-1.43%	0.18%
MSG position	14 of 15	8 of 15	14 of 15	13 of 15	15 of 15	9 of 15	8 of 8
OCU actual	1.74	1.71	1.54	3.39	3.19	1.47	2.07
MSG average	1.39	1.80	1.27	2.26	2.50	1.44	1.58



Detections	Central	Isle of Wight	North & East	Portsmouth	Southampton	Western	Total
YTD Detection Rate	34.63%	36.12%	30.28%	27.69%	32.03%	37.69%	32.68%
This month	35.83%	34.48%	29.10%	25.62%	29.97%	39.70%	32.26%
YTD 08/09 Detections	34.91%	38.27%	37.11%	33.11%	37.04%	39.30%	36.48%
MSG position	13 of 15	10 of 15	12 of 15	14 of 15	6 of 15	5 of 15	6 of 8
OCU actual	34.18%	42.58%	35.47%	28.40%	38.40%	43.32%	36.42%
MSG average	40.71%	44.85%	41.25%	36.17%	35.36%	39.91%	41.69%

Note: Detections refer to Sanction Detections ONLY



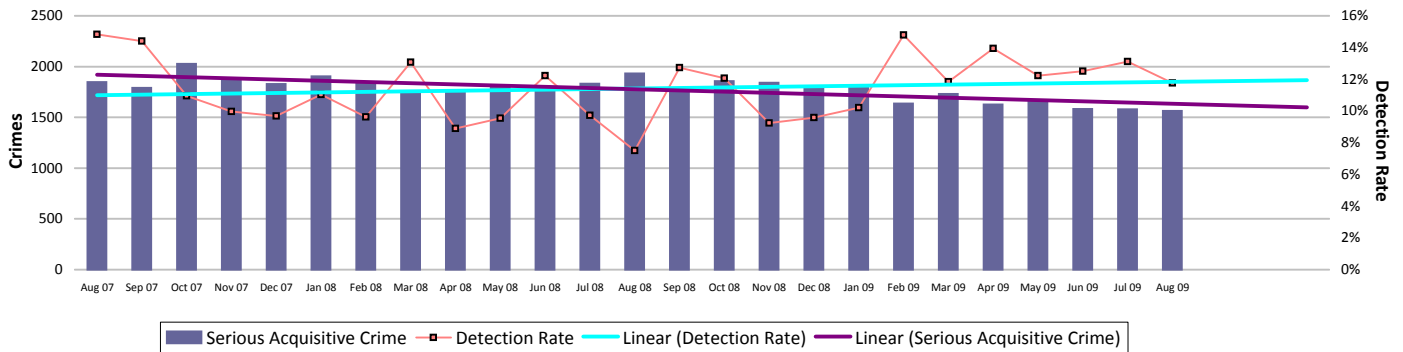
Note: MSG data is always published a month in arrears. For an explanation of this data, refer to the Summary on page 2

Catching criminals and managing offenders

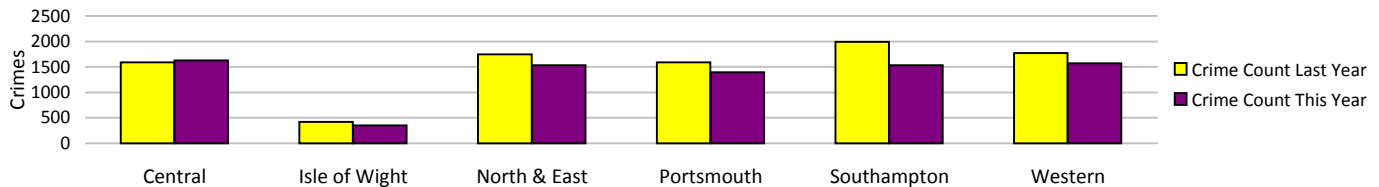
Serious acquisitive crime

SPI 5.2 Force Target

Serious acquisitive crime consists of crimsec codes 28, 29, 34A, 34B, 37/2, 45 and 48



Crimes	Central	Isle of Wight	North & East	Portsmouth	Southampton	Western	Total
YTD Crimes	1629	350	1533	1395	1532	1571	8010
YTD Target	1715	385	1841	1652	2050	1746	9388
YTD 08/09 Crimes	1592	418	1747	1592	1989	1770	9108
This month	309	57	297	272	329	299	1563
% change from 08/09	2.32%	-16.27%	-12.25%	-12.37%	-22.98%	-11.24%	-12.06%
MSG position	6 of 15	1 of 15	6 of 15	7 of 15	3 of 15	10 of 15	3 of 8
OCU actual	2.23	1.60	2.20	4.32	3.91	2.33	2.63
MSG average	2.76	2.33	2.61	4.94	4.99	2.28	3.08



Detections	Central	Isle of Wight	North & East	Portsmouth	Southampton	Western	Total
Target >15%							
YTD Detection Rate	11.05%	17.14%	13.50%	15.20%	11.03%	12.16%	12.72%
This month	12.94%	21.05%	12.12%	8.09%	12.16%	11.37%	11.77%
YTD 08/09 Detections	9.67%	15.55%	9.27%	9.36%	8.90%	9.21%	9.55%
MSG position	10 of 15	9 of 15	11 of 15	5 of 15	11 of 15	13 of 15	5 of 8
OCU actual	11.37%	15.05%	10.27%	13.80%	10.23%	11.33%	11.52%
MSG average	13.07%	15.79%	13.03%	11.76%	13.05%	13.10%	13.42%

Note: Detections refer to Sanction Detections ONLY



Serious Acquisitive offences OBTJ

SPI 6.2

Data to June 2009	Recorded Crime		Total OBTJs		Hampshire		Rolling Average	
	Month	RA	Month	RA	Month	RA	MSG	E&W
Aggravated burglary in a dwelling	2	50	1	10	50.0%	20.0%	22.2%	23.8%
Aggravated vehicle taking	13	249	14	209	107.7%	83.9%	77.6%	71.4%
Burglary in a dwelling	470	5929	62	1004	13.2%	16.9%	15.1%	14.4%
Robbery	76	1164	32	226	42.1%	19.4%	21.7%	17.6%
Theft from a vehicle	814	10861	24	364	3.0%	3.4%	7.3%	8.6%
Theft of a motor vehicle	220	2883	26	335	11.8%	11.6%	12.5%	12.7%

	Convictions	Caution	TICs	Cannabis Warnings	PNDs
Rolling 12 month Average					
Aggravated burglary in a dwelling	10	0	0	0	0
Aggravated vehicle taking	188	21	0	0	0
Burglary in a dwelling	536	29	439	0	0
Robbery	222	1	3	0	0
Theft from a vehicle	202	54	108	0	0
Theft of a motor vehicle	270	38	27	0	0

RA = Rolling Annual
E&W = England & Wales

Note: MSG data is always published a month in arrears. For an explanation of this data, refer to the Summary on page 2

Catching criminals and managing offenders

Serious acquisitive crime breakdown

Robbery

Year to date	Central	Isle of Wight	North & East	Portsmouth	Southampton	Western	Total
Crimes	40	13	62	107	151	66	439
08/09 crimes	47	8	58	96	172	70	451
% change from 08/09	-14.89%	62.50%	6.90%	11.46%	-12.21%	-5.71%	-2.66%
MSG position	2 of 15	6 of 15	5 of 15	4 of 15	7 of 15	10 of 15	3 of 8
Detection rate	42.50%	38.46%	29.03%	33.64%	23.84%	18.18%	28.25%
MSG position	2 of 15	14 of 15	11 of 15	7 of 15	9 of 15	7 of 15	4 of 8
August 2009	Central	Isle of Wight	North & East	Portsmouth	Southampton	Western	Total
Crimes	11	2	13	18	34	13	91
Detection rate	27.27%	100.00%	15.38%	16.67%	17.65%	30.77%	21.98%

Dwelling burglary

Year to date	Central	Isle of Wight	North & East	Portsmouth	Southampton	Western	Total
Crimes	472	106	467	410	445	375	2275
08/09 crimes	437	153	533	510	403	421	2457
% change from 08/09	8.01%	-30.72%	-12.38%	-19.61%	10.42%	-10.93%	-7.41%
MSG position	3 of 15	3 of 15	5 of 15	4 of 15	4 of 15	4 of 15	2 of 8
Detection rate	18.22%	16.04%	17.13%	26.34%	13.93%	26.93%	19.96%
MSG position	5 of 15	5 of 15	11 of 15	1 of 15	9 of 15	3 of 15	3 of 8
August 2009	Central	Isle of Wight	North & East	Portsmouth	Southampton	Western	Total
Crimes	110	17	84	106	96	77	490
Detection rate	20.00%	17.65%	25.00%	8.49%	22.92%	14.29%	17.96%

Vehicle crime

Year to date	Central	Isle of Wight	North & East	Portsmouth	Southampton	Western	Total
Crimes	1117	231	1004	878	936	1130	5296
08/09 crimes	1108	257	1156	986	1414	1279	6200
% change from 08/09	0.81%	-10.12%	-13.15%	-10.95%	-33.80%	-11.65%	-14.58%
MSG position	8 of 15	2 of 15	6 of 15	8 of 15	5 of 15	13 of 15	3 of 8
Detection rate	6.89%	16.45%	10.86%	7.74%	7.59%	6.90%	8.33%
MSG position	13 of 15	8 of 15	10 of 15	9 of 15	11 of 15	13 of 15	6 of 8
August 2009	Central	Isle of Wight	North & East	Portsmouth	Southampton	Western	Total
Crimes	188	38	200	148	199	209	982
Detection rate	7.98%	18.42%	6.50%	6.76%	6.03%	9.09%	7.74%

Theft of a motor vehicle

Year to date	Central	Isle of Wight	North & East	Portsmouth	Southampton	Western	Total
Crimes	266	67	283	158	244	202	1220
MSG position	6 of 15	3 of 15	7 of 15	2 of 15	7 of 15	4 of 15	1 of 8
Detection rate	18.42%	38.81%	14.49%	22.78%	11.89%	21.78%	18.44%
MSG position	8 of 15	4 of 15	14 of 15	4 of 15	11 of 15	5 of 15	4 of 8
August 2009	Central	Isle of Wight	North & East	Portsmouth	Southampton	Western	Total
Crimes	47	12	55	29	50	33	226
Detection rate	21.28%	50.00%	14.55%	20.69%	16.00%	48.48%	23.89%

Theft from a motor vehicle

Year to date	Central	Isle of Wight	North & East	Portsmouth	Southampton	Western	Total
Crimes	851	164	721	720	692	928	4076
MSG position	8 of 15	2 of 15	6 of 15	8 of 15	5 of 15	13 of 15	4 of 8
Detection rate	3.29%	7.32%	9.43%	4.44%	6.07%	3.66%	5.30%
MSG position	13 of 15	12 of 15	10 of 15	10 of 15	10 of 15	13 of 15	6 of 8
August 2009	Central	Isle of Wight	North & East	Portsmouth	Southampton	Western	Total
Crimes	141	26	145	119	149	176	756
Detection rate	3.55%	3.85%	3.45%	3.36%	2.68%	1.70%	2.91%

Robbery, dwelling burglary and vehicle crime are the component parts of serious acquisitive crime. These individual crime types do not have target:

Catching criminals and managing offenders

Gun crime rate

	Central	Isle of Wight	North & East	Portsmouth	Southampton	Western	Total	MSG position 30 Apr 09
YTD August 2009	18	1	8	10	8	5	50	3 of 8
YTD August 2008	22	1	8	12	8	13	64	
% change from 08/09	-18.2%	0.0%	0.0%	-16.7%	0.0%	-61.5%	-21.9%	

SPI 5.5

Gun crime figures published reflect the APACS technical definition which includes "where the victim is convinced of the presence of a firearm, even if it is concealed and there is evidence of the suspect's intention to create this impression".

Knife crime rate

	Central	Isle of Wight	North & East	Portsmouth	Southampton	Western	Total	MSG position 31 Mar 09
YTD August 2009	50	13	59	50	90	34	296	3 of 8
YTD August 2008	64	16	62	60	96	52	350	
% change from 08/09	-21.9%	-18.8%	-4.8%	-16.7%	-6.3%	-34.6%	-15.4%	

SPI 5.6

Knife = knife or other sharp instrument (including broken glass/bottles) piercing the skin or, for threats and attempts, instruments normally capable of piercing the skin. The measure for counting broken glass/bottles has changed for 2009-2010 with less occurrences being counted by the Home Office. Knife crime figures published reflect the APACS technical definition which includes "where the victim is convinced of the presence of a knife, even if it is concealed and there is evidence of the suspect's intention to create this impression".

Serious sexual crime OBJ rate

SPI 6.4

The table below shows % of persons brought to justice for serious sexual crimes against the total number of serious sexual crimes

OBJT Crime category	Jan-09	Feb-09	Mar-09	Apr-09	May-09	Jun-09	Rolling average
Tier 1: Serious Sexual Offences	20%	44%	38%	29%	34%	35%	38%

Murder offences

SPI 5.4

	Central	Isle of Wight	North & East	Portsmouth	Southampton	Western	Total
YTD August 2009	4	2	1	1	1	2	11
YTD Domestic Murders 2009	1	0	0	0	0	1	2
YTD August 2008	0	0	1	0	1	0	2
YTD Domestic Murders 2008	0	0	1	0	1	0	2
% change from 08/09							Not applicable

FIU1 submissions

	Central	Isle of Wight	North & East	Portsmouth	Southampton	Western	Total
YTD August 2009	104	96	93	79	112	84	568
Number of eligible detections	1641	658	1582	1561	1642	1375	8459
% submission rate	6%	15%	6%	5%	7%	6%	7%

	Central	Isle of Wight	North & East	Portsmouth	Southampton	Western	Total
August 2009	20	11	12	16	23	20	102
Number of eligible detections	314	110	336	285	333	245	1623
% submission rate	6%	10%	4%	6%	7%	8%	6%

Eligible crimes are those covered by Proceeds of Crime Act (POCA)

Prolific and other Priority Offenders (PPOs) convictions

Number of convictions recorded against identified, prolific and other priority offenders (PPOs)

	Jan-09	Feb-09	Mar-09	Apr-09	May-09	Jun-09	Jul-09
Persistent Young Offenders	94	83	80	99	78	83	73
Priority Prolific Offenders	27	40	25	39	23	32	23
Persistent Priority Prolific Young Offenders	3	2	2	6	2	6	4
Young Offenders	230	162	191	195	175	185	207

Class A drugs sanction detections

Force Target

	Central	Isle of Wight	North & East	Portsmouth	Southampton	Western	Total
YTD August 2009	13	7	22	19	33	64	158
YTD Target	20.96	16.77	33.53	33.53	41.92	20.96	167.67
August 2009	1	2	3	3	19	1	29

Drug seizures information

	Central	Isle of Wight	North & East	Portsmouth	Southampton	Western	Total
YTD July 2009	448	455	252	234	366	155	1910
YTD July 2008	327	295	178	220	178	217	1415
% change from 08/09	37.0%	54.2%	41.6%	6.4%	105.6%	-28.6%	35.0%

Note: This data is produced one month in arrears

Number of Organised Crime Groups (OCGs) disrupted

Force Target

YTD August 2009	2008/2009	2009/2010	YTD Target
Number of OCGs identified and mapped	1	0	
Number of OCGs disrupted or partially disrupted through Crime OCU activity	5	No data	10.5
Number of OCGs subject to tactical activity	9	15	

Note: MSG data is always published a month in arrears. For an explanation of this data, refer to the Summary on page 2

Protecting our communities

Domestic violence and abuse is defined by ACPO as: 'any incidence of threatening behaviour, violence or abuse (psychological, physical, sexual, financial or emotional) between adults, aged 18 and over, who are or have been intimate partners or family members, regardless of gender or sexuality'

Domestic violence and abuse crime arrest rate

Force Target

Domestic violence arrest rate is based on records where the occurrence has been flagged as a domestic, and has an arrest event or a linked person reason of arrested.

Target >80%

Year to Date	Central	Isle of Wight	North & East	Portsmouth	Southampton	Western	Total
Domestic crimes	875	267	666	577	831	647	3863
Domestic crime detection rate	34.29%	40.45%	39.79%	36.74%	33.69%	39.10%	36.71%
Domestic crime arrests	663	199	523	461	648	483	2977
Domestic crime arrest rate	75.77%	74.53%	78.53%	79.90%	77.98%	74.65%	77.06%

Month	Central	Isle of Wight	North & East	Portsmouth	Southampton	Western	Total
Domestic crimes	184	68	130	108	185	136	811
Domestic crime detection rate	35.33%	29.41%	45.38%	37.96%	31.89%	41.18%	36.99%
Domestic crime arrests	141	46	100	81	139	100	607
Domestic crime arrest rate	76.63%	67.65%	76.92%	75.00%	75.14%	73.53%	74.85%

Police No Further Action (NFA) Rate

Year to Date	Central	Isle of Wight	North & East	Portsmouth	Southampton	Western	Total
Domestic Crimes	Anticipated initially for July, there have been difficulties in obtaining the data which should now be available from the autumn						
Domestic Crime NFA'd							
Domestic Crime NFA Rate							

Month	Central	Isle of Wight	North & East	Portsmouth	Southampton	Western	Total
Domestic Crimes	Anticipated initially for July, there have been difficulties in obtaining the data which should now be available from the autumn						
Domestic Crime NFA'd							
Domestic Crime NFA Rate							

Repeat incidents of domestic violence cases reviewed at MARAC

SPI 14.1

A Multi Agency Risk Assessment Conference (MARAC) meet to manage the highest risk domestic abuse cases. A 'case' = a victim & perpetrator(s) being reviewed at the same MARAC. Once a case has been to MARAC, it remains flagged as a MARAC case for 12 mths after the most recent MARAC review. A repeat case is when a case reviewed at MARAC has also been reviewed at the same MARAC within the preceding 12 mths. For further information on this measure please refer to Home Office Guidance on Performance Indicators for Policing & Community Safety 09/10.

August 2009 YTD	Central	Isle of Wight	North & East	Portsmouth	Southampton	Western	Total
Number of cases reviewed at MARAC	No data received						
Repeat cases reviewed at MARAC	No data received						
% Repeat cases	No data received						

Hate crime detection rate

Force Target

Target >45%

Year to Date	Central	Isle of Wight	North & East	Portsmouth	Southampton	Western	Total
Incidents	127	18	99	180	258	84	766
Crimes	99	15	79	134	193	75	595
Detections	48	8	37	66	101	25	285
Detection Rate	48.48%	53.33%	46.84%	49.25%	52.33%	33.33%	47.90%

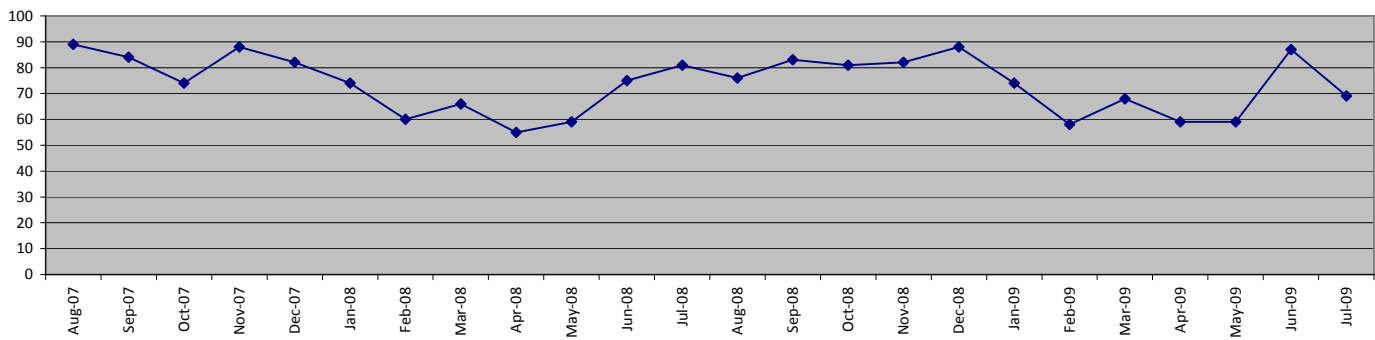
Month	Central	Isle of Wight	North & East	Portsmouth	Southampton	Western	Total
Incidents	23	3	19	40	46	15	146
Crimes	17	2	15	28	34	15	111
Detections	15	0	5	14	24	5	63
Detection Rate	88.24%	0.00%	33.33%	50.00%	70.59%	33.33%	56.76%

Protecting our communities

Road traffic casualties

SPI 9.1 Force Target

Fatal/serious injury casualties - all victims

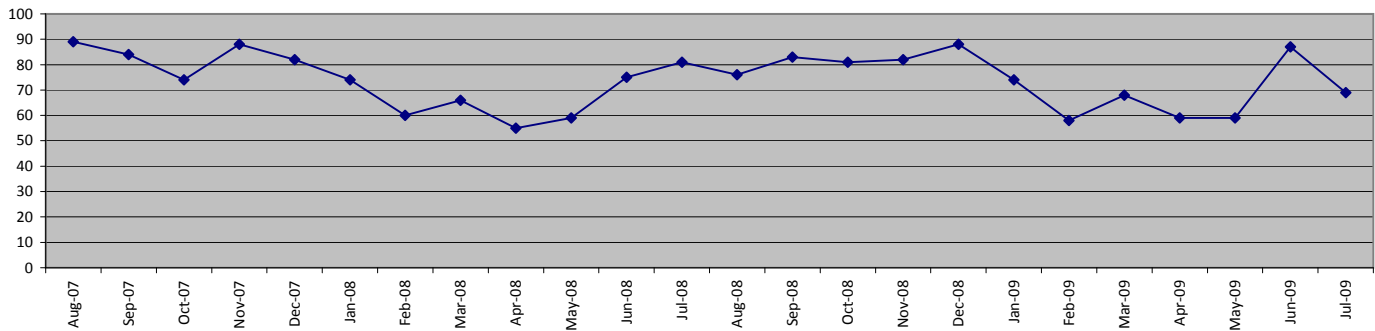


The Force target 2009/2010 is for less than 888 casualties, which equates to less than 297 in 122 days

YTD July 2009 = 274 casualties

	Central	Isle of Wight	North&East	Portsmouth	Southampton	Western	Total
April 2009 - July 2009	62	25	58	22	36	71	274
of these, fatalities were	3	1	2	1	0	7	14
April 2008 - July 2008	51	30	56	31	34	68	270

Fatal/serious injury casualties - victims under 16 years



The DETR target is for a 50% reduction in child casualties by 2010 from 164 to 82

	Central	Isle of Wight	North&East	Portsmouth	Southampton	Western	Total
April 2009 - July 2009	5	2	4	5	3	5	24
of these, fatalities were	0	0	0	0	0	0	0
April 2008 - July 2008	6	6	6	4	6	4	32

Note: YTD numbers may change as the accident record data are updated each month

Note: The casualties in East Hampshire have all been attributed to North & East OCU in the absence of a breakdown by OCUs

Sickness Data

In July Hampshire Constabulary undertook a major upgrade of the software used to provide sickness data. This upgrade has resulted in a significant amount of change to the system and has resulted in sickness data being unavailable in time to publish in this Performance Profile

SPI 13.1 Force Target
SPI 13.2 Force Target

Making the most of our resources

PDR Data

In July Hampshire Constabulary undertook a major upgrade of the software used to provide PDR data. This upgrade has resulted in a significant amount of change to the system and has resulted in PDR data being unavailable in time to publish in this Performance Profile

Making the most of our resources

NCRS compliance

	Central	Isle of Wight	North & East	Portsmouth	Southampton	Western	Crime
Self-Inspection	91.0%	85.0%	80.0%	66.0%	81.0%	90.0%	No data

Note: Self-Inspections - only appealed records are moderated by the Force Crime Registrar

These inspections were undertaken in March 2008

Budget spend

The actual spend to the end of July 2009 was £94.2m. The projected spend for the force at the end of the financial year is £302.803m which will be an underspend of £1.897m against the agreed budget.

	Central	Isle of Wight	North & East	Portsmouth	Southampton	Western	Crime	Operations
Projected over/(under)spend 2009/2010	£186,000	-£26,000	-£889,000	-£4,000	£22,000	-£648,000	-£154,000	£33,000

Efficiency savings

The Authority needs to maximise efficiency gains both due to its budgetary constraints and in order to achieve value for money. In addition, there is a national Home Office target to deliver recurring efficiency or productivity gains equivalent to 10.3% of the 2007/08 'Gross Revenue Expenditure' over three years, by the end of 2010/11. Each Authority must set its own challenging target. The Authority and Force are currently working to a target equivalent to the national target, which equates to £33m over the 3 years (an average of £11m per annum). The actual achieved as at 31/03/09 was £9.4m. The current value of efficiency initiatives included in the register is £26.753m

Making the most of our resources

Specialist support

7 OCU

	OCU Supported							Total
	Central	Isle of Wight	North & East	Portsmouth	Southampton	Western	Other	
April 2009	2	1	4	4	4	1	0	16
May 2009	1	1	0	3	3	0	0	8
June 2009	4	0	1	2	1	1	0	9
July 2009	4	1	1	1	1	1	0	9
August 2009	3	1	6	0	1	3	0	14
Total	14	4	12	10	10	6	0	56

NOTE: An 'assist' includes assistance that is outside of normal working practices and can encompass practical resources and/or managerial support. For example, it includes support with house to house/investigative enquiries, administrative support, interviewing/statement taking, advice and IT examinations, to name a few. A single assist can involve anything from one member of staff to several from a period of a few hours, to a whole week. An assist does not include phone calls.

8 OCU

	8 OCU Commitment to ANPR Operations - April - August 09							
	OCU Supported							Total
	1	2	3	4	5	6	Other	
No. of Ops	61	8	39	25	52	29	13	227
Arrests	38	3	6	16	42	12	1	118
S.165 Vehicle Seizures	95	19	35	82	123	50	34	438
Impaired Drivers	14	0	3	14	42	9	6	88
Total Results	147	22	44	112	207	71	41	644
Cash/POCA Seizures	Seized by or assisted by 8 OCU ANPR teams (£)							19170
Drugs Seizures	Seized by or assisted by 8 OCU ANPR teams (approx £)							500,000

8 OCU NON-ANPR Pre-Planned Operations/Tasks/Requests for Resources - Apr-Aug 09

	OCU Supported							Total
	1	2	3	4	5	6	Other ^{*4}	
	No. of Ops	98	59	106	88	170	164	20
Arrests	33	26	47	39	69	44	8	266
S.165 Vehicle Seizures	12	2	2	12	10	25	0	63
Total Results	45	28	49	51	79	69	8	329
Cash/POCA Seizures	Seized by or assisted by 8 OCU teams (not ANPR) (£)							6918
Drugs Seizures	Seized by or assisted by 8 OCU teams (not ANPR) (approx Kgs)							16.3

8 OCU Arrests for Death by Driving Offences April - August 09

	Persons Arrested	No. of arrests	All Disposals
4/04 Causing Death by Dangerous Driving	1	1	1
4/06 Causing Death by Careless Driving under Influence of Drink or Drugs	1	1	2
4/08 Causing Death by Careless or Inconsiderate Driving	5	5	9
4/09 Causing Death by Driving: Unlicensed, Disqualified or Uninsured Drivers	0	0	0
Total	7	7	12

Interventions in support of OCUs and Force Strategy YTD

	Persons Arrested	Apr-Aug 2009 Incidents attended ^{*1}			FPNs ^{*2}		S165 Vehicle
		Total	% DSP	% ONS	Disorder	Other	
Air Support Unit	5	Data given as a whole for 8 OCU			0	1	
Dog Support Unit	107				1	61	
Force Support Unit	219				6	10	
Roads Policing Unit	898				6	7463	
Specialist Firearms Officers	104				1	51	
Armed Response Vehicles	453				7	421	
Other 8 OCU Officers	4				0	2	
Total	1790	117448	13.31%	8.92%	21	8009	1703

^{*1}Altaris data - Dispatch (DSP) and Arrival (ONS) of 8 OCU units as a percentage of Grade 1 and 2 incidents created (Grade 2 includes 2 and 2N). Due to an issue with the Business Objects report, data for August does not include Air Support Unit however they attended 99 incidents in August

^{*2}FPNs are Fixed Penalty Notices issued.

^{*3} Vehicles seized under Section 165 of the Road Traffic Act are for No Insurance or No Driving Licence.

^{*4} Other is Out of County/Mutual Aid

Equipping our team to deliver

Financial awareness training

Financial awareness training will be undertaken for budget holders with the aim of ensuring a minimum of 95% of budget holders are trained by the end of the financial year. The target is for at least 95% of all Chief Inspector to Chief Superintendents to be trained by the end of the financial year

Full Year Apr 09 - Mar 10	
Courses Planned	Places Available
10	160

Year to Date (Aug 09)	
Courses Held	Numbers Trained
3	16
	36

Chief Inspector to Chief Superintendent (towards target)
Total number trained

Preparing for frontline supervision

A leadership project is underway and a formal Force leadership target will be established with supporting material to be published here in the coming months. The tables below provide data on 2009/2010 leadership training courses

	Full Year Apr 09 - Mar 10		Year to Date (Aug 09)	
	Courses Planned	Places Available	Courses Held	Numbers Trained
Sergeants Operational Activities	6	108	3	30
Inspectors Statutory Responsibilities	5	70	2	24
First Line Manager - Leadership Part 1	6	96	2	32
First Line Manager - Leadership Part 2	6	96	5	69
First Line Manager - Action Learning Sets	18	108	13	122

Mobile data

A mobile data project is underway - no information will be available before September 2009

Minority ethnic officer recruitment

SPI 3.1

	All recruits	Minority ethnic recruits	%
YTD August 2009	47	1	2.1%

Female officer representation

SPI 3.2

	Male strength	Female strength	%
YTD August 2009	2678.2	1022.9	27.6%