



# **Force Performance Summary**

**October 2008**

This document contains a strategic overview of the Constabulary's performance. It has a variety of performance measures within it, but for the first time our performance is aligned to the Force Control Strategy.

It is a headline document that will enable our customers, both internally and externally, to easily assess performance in key domains. Additionally with the introduction of the national performance framework called the Assessment of Police and Community Safety (APACS), it is crucial that we become focused and more accountable.

At the front of the document there are several matrices that reflect our performance against our targets, firstly year to date and secondly relevant for that particular month.

Performance in key areas is then explored in more depth with an indication of where each measure has originated - for example, APACS Statutory Performance Indicator (SPI) or a Force Control Strategy (FCS) measure.

This document is then taken forward by key stakeholders within the organisation to the Force Performance Review Group, where it is used to highlight areas of both best practice and those for development.

This is an evolving document and as such, the content may alter over time and any feedback would be welcomed by the Performance Review Team.

## Index

Page

### Year to date performance matrix

4-5

### Monthly performance matrix

6-7

including notes on matrices terminology

### Safer Neighbourhoods

8	Overall satisfaction	SPI 1.1	FCS	Consultation & Research Team
8	Being kept informed		FCS	Consultation & Research Team
8	Comparative satisfaction of minority ethnic groups	SPI 1.2		Consultation & Research Team
8	Satisfaction of victims of racist incidents	SPI 1.3		Consultation & Research Team
8	Confidence in local police	SPI 2.3	FCS	iQuanta - Quarterly
8	Understanding community issues		FCS	iQuanta - Quarterly
8	Perception of anti-social behaviour	SPI 4.1		iQuanta - Quarterly
8	Perception of drug use in local area	SPI 4.3	FCS	iQuanta - Quarterly
8	Perception of drunk or rowdy behaviour	SPI 4.2		iQuanta - Quarterly
9	Assault with less serious injury	SPI 5.3	FCS	Business Objects
10	Successful neighbourhood priorities		FCS	Neighbourhood Policing Lead - ACC 'TO' Dept
10	Anti-social use of motor vehicle (NSIR)		FCS	PRT - NSIR Return
10	Anti-social behaviour (NSIR)		FCS	PRT - NSIR Return
11	Criminal damage		FCS	Business Objects

### Safeguard people

12	DV Incident arrest rate		FCS	Business Objects
12	DV victimisation		FCS	N/A
12	Repeat victims of domestic violence		FCS	Business Objects
12	Domestic violence OBTJ rate		FCS	Criminal Justice Department
13	Hate crime detection rate		FCS	Business Objects
13	Sexual offender reoffending rate		FCS	N/A

### Protect our communities

14	Road traffic casualties	SPI 9.1	FCS	8 OCU Performance Team
----	-------------------------	---------	-----	------------------------

### Prevent, reduce and detect crime

15	Serious violent crime and sanction detections	SPI 5.1	FCS	Business Objects
16	All crime		FCS	Business Objects
17	Serious acquisitive crime and sanction detections	SPI 5.2	FCS	Business Objects
18	Serious acquisitive crime breakdown			
19	Gun crime rate	SPI 5.5		Business Objects and Manual Checking
19	Knife crime rate	SPI 5.6		Business Objects and Manual Checking
19	Serious sexual crime OBTJ rate	SPI 6.4	FCS	Criminal Justice Department
19	Murder offences		FCS	Business Objects
19	Asset recovery	SPI 8.1	FCS	Specialist Investigation Department
19	PPO convictions	SPI 10.1	FCS	Criminal Justice Department
19	Class A drugs sanction detections		FCS	Business Objects
19	Drug Intervention Measures (DIMs)			Force Intelligence

### Organisational management

20	Police officer sickness	SPI 13.1	FCS	PRT - Delphi + Personnel - Staffing Figures
21	Police staff sickness	SPI 13.2	FCS	PRT - Delphi + Personnel - Staffing Figures
22	Overdue PDRs			Personnel
23	Minority Ethnic Officer Recruitment	SPI 3.1		Personnel
23	Female Officer Representation	SPI 3.2		Personnel
23	NCRS compliance		FCS	Force Incident & Crime Registrar
23	Budget Spend		FCS	Finance
23	Efficiency Savings		FCS	Finance

### Specialist Operations - 7 OCU

24-25	Murder & domestic murder offences (SPI 5.4), CSI attendance, DNA & fingerprint identifications, forensic examinations Major Incidents, class A drug detections, kidnaps, abductions, blackmails			
-------	--	--	--	--

### Specialist Operations - 8 OCU

26	Patrol availability, pre-planned operations, ANPR operations, Interventions in support of OCUs & Force Strategy			
----	---	--	--	--

### Operational Services

27	Performance highlights relating to Operation Services Departments which include Call Management, Criminal Justice Department and Personnel and Training			
----	---	--	--	--

### Victim Focus

28-29	APACs indicators for user satisfaction, Victim Code compliance, Victim Support status			
-------	---	--	--	--

### Restricted data

30

FCS = Force Control Strategy

PRT = Performance Review Team

SPI - Statutory Performance Indicator

## Year to date performance matrix

This matrix is based on year to date comparison with 2007/2008 performance

		Target	Actual	
<b>Safer Neighbourhoods</b>	Overall satisfaction (data for rolling 12 months)	>62.0%	62.0%	
	Being kept informed (data for rolling 12 months)	>60.0%	47.0%	
	Confidence in local police	>58.3%	57.9%	
	Understanding community issues	>66.5%	66.8%	
	Perception of drug use in local area	<23.3%	26.4%	
	Assault with less serious injury*	-5.0%	3.9%	
	OCU specific targets			
	Successful neighbourhood priorities	>33.0%	Pg 10	
	Anti-social use of motor vehicle	-5.0%	-18.2%	
	Anti-social behaviour	-5.0%	-6.0%	
	Reduce criminal damage	-12.0%	-9.3%	
	<b>Safer Neighbourhoods - targets achieved</b>			<b>4</b>
<b>Safeguard people</b>	Domestic violence incident arrest rate	>35.0%	34.0%	
	Repeat victims of domestic violence	-5.0%	10.2%	
	Hate crime detection rate	>45.0%	34.0%	
<b>Safeguard people - targets achieved</b>			<b>0</b>	
<b>Protect our communities</b>	Road traffic casualties	<470	429	
	<b>Protect our communities - targets achieved</b>		<b>1</b>	

Central	Isle of Wight	North & East	Portsmouth	Southampton	Western	Crime	Operations
62.0%	68.0%	59.0%	62.0%	59.0%	63.0%	N/A	
46.0%	54.0%	44.0%	46.0%	46.0%	48.0%	N/A	
Force level target - to exceed MSG average by 5% whilst not declining on current performance							
Force level target - to exceed MSG average by 3.5% whilst not declining on current performance							
Force level target - be under MSG average whilst not declining on current performance							
-3.6%	-3.4%	2.6%	-1.9%	19.9%	-1.2%	N/A	
-5.91%	-4.52%	0.00%	-4.00%	-8.69%	-4.21%	N/A	
Quarterly Data - See Page 10							N/A
-21.1%	-21.7%	-18.3%	-31.6%	-12.9%	-4.0%	N/A	
-8.6%	-4.9%	-0.5%	-10.4%	-3.1%	-8.5%	N/A	
-11.1%	-13.5%	-3.7%	-6.9%	-14.0%	-7.2%	N/A	
<b>3</b>	<b>3</b>	<b>1</b>	<b>3</b>	<b>2</b>	<b>2</b>		
35.3%	36.5%	36.6%	25.9%	29.2%	50.0%	N/A	
-13.1%	16.2%	34.8%	-14.5%	40.2%	24.1%	N/A	
32.8%	39.4%	32.0%	27.7%	36.1%	39.0%	N/A	
<b>2</b>	<b>1</b>	<b>1</b>	<b>1</b>	<b>0</b>	<b>1</b>		
Owned by Operations OCU							429
							<b>1</b>

## Year to date performance matrix cont'd

This matrix is based on year to date comparison with 2007/2008 performance

		Target	Actual	
Prevent, reduce and detect crime	Serious violent crime	-6.0%	-15.3%	
	Serious violent crime SD	>50.0%	50.9%	
	All crime*		-3.0%	-3.2%
		OCU specific targets		
	Serious acquisitive crime*		-2.0%	-5.8%
		OCU specific targets		
	Serious acquisitive crime SD	>15.0%	10.4%	
	Murder offences	<9	4	
	Asset recovery (shown in £1000s)	£2,423.7	£7,127.6	
Class A drugs SD	>235	218		
<b>Prevent, reduce and detect crime - targets achieved</b>			<b>6</b>	
Organisational management	Police officer sickness	<4.38	4.52	
	Police staff sickness	<4.38	4.89	
	NCRS compliance	Good	N/A	
		90.0%		
	Budget spend	<50.1%	49%	
	Efficiency savings	>£10m	£2.44m	
<b>Organisational management - targets achieved</b>			<b>1</b>	
<b>Force Total - targets achieved</b>			<b>12</b>	

Central	Isle of Wight	North & East	Portsmouth	Southampton	Western	Crime	Operations
8.6%	-15.6%	-32.0%	-27.4%	-17.5%	0.0%	N/A	
55.3%	73.7%	60.6%	41.2%	42.3%	50.9%	N/A	
-2.3%	-7.7%	-0.5%	-4.9%	-5.5%	-0.8%	N/A	
-2.34%	-2.35%	-1.50%	-1.50%	-4.35%	-5.25%	N/A	
-6.3%	-12.7%	-0.6%	-5.9%	-4.8%	-9.5%	N/A	
-1.39%	-2.11%	-2.38%	-1.36%	-2.27%	-2.48%	N/A	
10.2%	14.5%	9.0%	12.7%	9.6%	9.7%	N/A	
Owned by Crime OCU						4	Owned by Crime OCU
This is a Force measure							
Owned by Crime OCU						218	Owned by Crime OCU
2	4	2	3	3	2	1	
4.40	5.00	3.33	5.71	4.62	5.37	3.77	4.42
5.52	6.53	4.11	6.13	5.13	5.04	4.21	2.97
Fair	Fair	Fair	Poor	Poor	Fair	No data	N/A
82%	82%	84%	72%	64%	85%	No data	
50%	47%	52%	51%	49%	49%	48%	52%
This is a Force measure							
1	1	2	0	1	1	3	1
8	9	6	7	6	6	4	2

Note: Some areas contained within the Force Control Strategy and Force Target documents do not yet appear in the above matrix. This is because, to date, it has not been possible to establish sufficient baseline data to set a target. Work is ongoing in these areas to establish a baseline. Information in relation to our progress within these areas is contained within the detailed sections of the profile.

### Monthly performance matrix

This matrix is based on monthly data compared to force target

		Target	Actual
Safer Neighbourhoods	Assault with less serious injury*	<1163	1286
	OCU specific targets		
	Anti-social use of motor vehicle	<1457	1206
	OCU specific targets		
	Anti-social behaviour	<8105	7765
	OCU specific targets		
	Reduce criminal damage	<2908	3079
		OCU specific targets	
<b>Safer Neighbourhoods - targets achieved</b>			<b>2</b>
Safeguard people	Domestic violent incident arrest rate	> 35.0%	31.3%
	Hate crime detection rate	>45.0%	29.2%
<b>Safeguard people - targets achieved</b>			<b>0</b>
<b>Protect our communities - targets achieved</b>			
Prevent, reduce and detect crime	Serious violent crime	<75	76
	OCU specific targets		
	Serious violent crime SD	>50.0%	53.9%
	All crime*	<13588	13936
	OCU specific targets		
	Serious acquisitive crime*	<1900	1877
	OCU specific targets		
	Serious acquisitive crime SD	>15.0%	11.8%
Asset recovery	£344,483	£2,486	
Class A drugs SD	>33	36	
<b>Prevent, reduce and detect crime - targets achieved</b>			<b>3</b>
Organisational management	Police officer sickness	<0.63	0.60
	Police staff sickness	<0.63	0.89
<b>Organisational management - targets achieved</b>			<b>1</b>
<b>Force Total - targets achieved</b>			<b>6</b>

Central	Isle of Wight	North & East	Portsmouth	Southampton	Western	Crime	Operations
254	92	185	174	399	182		N/A
246.0	79.0	204.9	163.1	284.5	185.6		N/A
230	88	196	96	302	247		N/A
312.5	97.7	278.4	143.6	260.7	288.9		N/A
1515	544	1422	1145	1898	1126		N/A
1702.0	594.2	1391.2	1268.4	1730.4	1288.1		N/A
705	211	654	450	568	491		N/A
635.5	228.1	523.9	362.1	620.4	537.9		N/A
2	3	2	2	1	4		
33.5%	33.3%	33.7%	23.1%	25.4%	50.0%		N/A
30.0%	28.6%	34.4%	22.6%	24.5%	42.1%		N/A
0	0	0	0	0	1		
16	4	10	15	20	11		N/A
13.0	7.0	12.6	14.4	21.1	6.6		N/A
93.8%	125.0%	20.0%	26.7%	40.0%	63.6%		N/A
2905	823	2740	2152	2871	2445		N/A
2779.3	939.4	2551.9	2104.9	2871.8	2341.1		N/A
364	64	368	336	383	362		N/A
336.3	80.7	371.6	311.7	422.7	377.4		N/A
9.3%	14.1%	5.2%	27.4%	9.4%	8.8%		N/A
This is Force measure							
Owned by Crime OCU						36	Owned by Crime OCU
1	4	2	1	3	2	1	
0.55	0.63	0.48	0.61	0.60	0.67	0.54	0.71
0.85	1.30	0.61	1.05	1.38	1.06	0.56	0.71
1	0	2	1	1	0	2	0
4	7	6	4	5	7	3	0

Note: Some areas contained within the Force Control Strategy and Force Target documents do not yet appear in the above matrix. This is because, to date, it has not been possible to establish sufficient baseline data to set a target. Work is on going in these areas to establish a baseline. Information in relation to our progress within these areas is contained within the detailed sections of this document.

## Notes to be read in conjunction with matrices

<b>All citizen focus data</b>	Based on "completely or very satisfied"
<b>OBTJ</b>	Offenders Brought To Justice
<b>Road traffic casualties</b>	All data until 30 September 2008
<b>Budget spend</b>	Data is always one month in arrears
<b>Efficiency savings</b>	3 year target of £30m, notionally £10m per year
<b>SD</b>	Sanction detections
<b>Anti-social use of motor vehicle &amp; behaviour</b>	Data is obtained from NSIR and always 1 month in arrears
<b>Sickness data</b>	Force Actual = total for ALL officers/police staff - including those not in OCU
<b>OCU specific targets</b>	OCU specific targets are rounded to 1 decimal place, the actual figure may therefore seem the same but appear red due to this rounding
<b>Asset recovery</b>	Asset recovery is the sum total of the values of cash forfeitures and confiscation orders
<b>* = variable targets across OCUs for these target areas based on previous performance and MSG position</b>	

## Safer Neighbourhoods

### Overall satisfaction

Rolling 12 months data relates to: Nov 07 - Oct 08; rolling 3 months data relates to Aug 08 - Oct 08  
Overall satisfaction includes burglary, vehicle crime, violent crime and RTCs

Target 62%	Central	Isle of Wight	North & East	Portsmouth	Southampton	Western	Force	No. Surveys
Rolling 12 months	62%	68%	59%	62%	59%	63%	62%	8909
Rolling 3 months	63%	75%	67%	64%	61%	67%	65%	1845

### Being kept informed

Rolling 12 months data relates to: Nov 07 - Oct 08; rolling 3 months data relates to Aug 08 - Oct 08  
Being kept informed includes burglary, vehicle crime, violent crime and RTCs

Target 60%	Central	Isle of Wight	North & East	Portsmouth	Southampton	Western	Force	No. Surveys
Rolling 12 months	46%	54%	44%	46%	46%	48%	47%	8669
Rolling 3 months	49%	60%	49%	52%	55%	54%	52%	1750

### Comparative satisfaction of minority ethnic groups

Data relates to interviews which took place Nov 07 - Oct 08  
These figures are for overall satisfaction for burglary, vehicle crime, violent crime & RTCs; it excludes racist incidents

	Completely and very satisfied	Completely, very and fairly satisfied
White	62.1%	81.2%
Minority Ethnic	53.2%	75.4%

### Satisfaction of victims of racist incidents

These figures relate to interviews which took place Nov 07 - Oct 08; these will be updated quarterly  
Racist incident overall satisfaction = % completely or very satisfied

	Central	Isle of Wight	North & East	Portsmouth	Southampton	Western	Force
%	50%	60%	67%	58%	52%	65%	58%
Number of surveys	28	10	30	38	50	31	187

### British Crime Survey data

This data is updated by iQuanta approximately every quarter.

Data up to and including year ending June 2008	Confidence in local police		Understanding community issues		Targets MSG = Most Similar Group	
Avon & Somerset	48.8%		62.6%		Confidence in local police To exceed MSG by 5% whilst maintaining performance	
Bedfordshire	51.5%		61.4%			
Essex	54.8%		62.5%			
Hampshire	57.9%	2nd in MSG	66.8%	2nd in MSG	Understanding community issues To exceed MSG by 3.5% whilst maintaining performance	
Hertfordshire	58.5%		67.1%			
Kent	48.4%		58.9%			
Sussex	51.1%		61.7%		Perception of drug use To be under MSG whilst maintaining performance	
Thames Valley	55.5%		62.9%			
MSG	53.3%		63.0%			

Data up to and including year ending June 2008	Perception of anti-social behaviour		Perception of drug use		Perception of drunk or rowdy behaviour	
Avon & Somerset	11.6%		20.8%		22.8%	
Bedfordshire	17.3%		27.5%		21.5%	
Essex	10.4%		16.9%		19.4%	
Hampshire	17.7%	8th in MSG	26.4%	6th in MSG	30.9%	8th in MSG
Hertfordshire	14.6%		22.8%		25.3%	
Kent	15.8%		21.4%		22.2%	
Sussex	13.6%		22.7%		21.2%	
Thames Valley	16.2%		27.8%		25.2%	
MSG	14.7%		23.3%		23.6%	

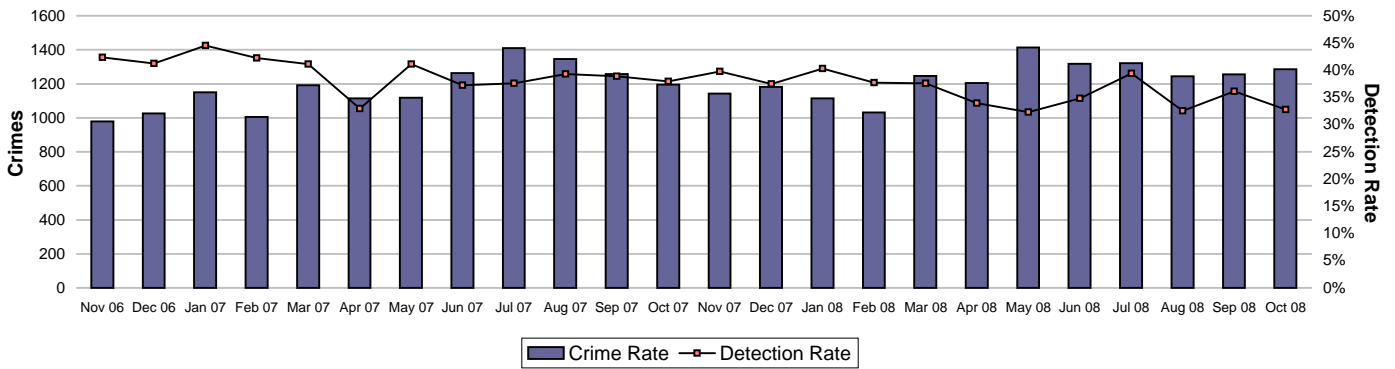
### The target for the three areas below is not to decline against previous performance

	Dec 2007	Mar 2008	Jun 2008	Sep 2008	Dec 2008
Confidence in local police	57.4%	57.4%	57.9%		
Understanding community issues	64.2%	65.5%	66.8%		
Perception of drug use	23.0%	23.0%	26.4%		

# Safer Neighbourhoods

## Assault with less serious injury

Assault with less serious injury consists of crimsec codes 8G and 8J

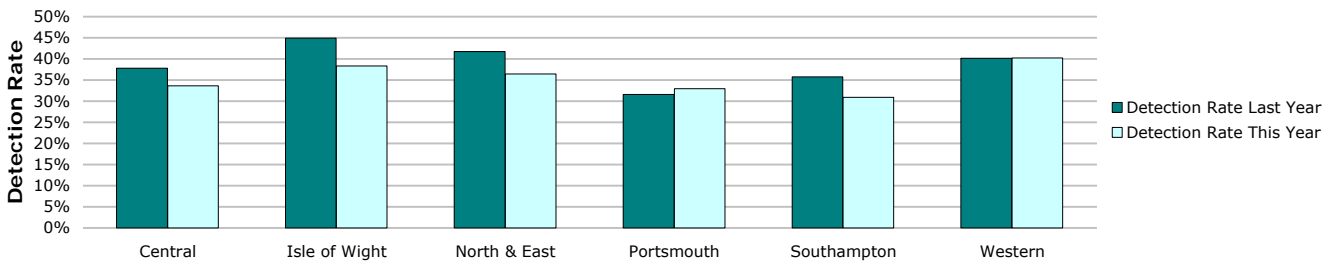


Crimes	Central	Isle of Wight	North & East	Portsmouth	Southampton	Western	Force
<b>YTD Crimes</b>	1768	605	1478	1248	2580	1365	9044
YTD Target	1698	545	1414	1126	1964	1281	8027
<b>YTD 07/08 Crimes</b>	1834	626	1440	1272	2151	1381	8704
This month	254	92	185	174	399	182	1286
% change from 07/08	-3.60%	-3.35%	2.64%	-1.89%	19.94%	-1.16%	3.91%
MSG position	13 of 15	11 of 15	14 of 15	7 of 9	15 of 15	7 of 15	8 of 8



Detections	Central	Isle of Wight	North & East	Portsmouth	Southampton	Western	Force
<b>YTD Detection Rate</b>	33.65%	38.35%	36.47%	32.93%	30.93%	40.22%	34.54%
This month	27.17%	43.48%	37.84%	33.33%	27.07%	41.76%	32.74%
<b>YTD 07/08 Detections</b>	37.79%	44.89%	41.74%	31.60%	35.75%	40.12%	37.91%
MSG position	14 of 15	13 of 15	12 of 15	6 of 9	11 of 15	10 of 15	7 of 8

Note: Detections refer to Sanction Detections ONLY



## Safer Neighbourhoods

### Successful neighbourhood priorities

Target = 33%	Central	Isle of Wight	North & East	Portsmouth	Southampton	Western	Force
Number of neighbourhoods	59	20	64	16	22	63	244
Number of priorities achieved	13	1	21	2	3	21	61
% of priorities achieved	22.0%	5.0%	32.8%	12.5%	13.6%	33.3%	25.0%

This data shows the number of neighbourhood priorities that have, over the last quarter, been successfully achieved. It should be remembered that limited value should be placed on this measure as it does not necessarily reflect community satisfaction with the police activity in support of the priorities. Work is still ongoing to capture this satisfaction level.

### Anti-social use of motor vehicle

**Data to be provided a month in arrears.** It is gathered using Altaris closing codes as the primary data source, then RMS as the secondary data source to gather incidents not recorded within Altaris.

The Force total does not add up to the sum of OCUs, this is due to Altaris incident logs which do not contain a geographic location.

	Central	Isle of Wight	North & East	Portsmouth	Southampton	Western	Force
<b>YTD Apr 08 to Sep 08</b>	1821	527	1549	724	1627	1977	8534
<b>YTD Apr 07 to Sep 07</b>	2309	673	1897	1059	1869	2060	10438
September	230	88	196	96	302	247	1206
YTD Target	1845.0	576.6	1643.5	847.8	1538.7	1705.7	8600.5
% v target	-1.3%	-8.6%	-5.7%	-14.6%	5.7%	15.9%	-0.8%
% change from 07/08	-21.1%	-21.7%	-18.3%	-31.6%	-12.9%	-4.0%	-18.2%

Anti-social use of motor vehicle - relates to NSIR category Vehicle Nuisance/Inappropriate Use within the Anti-Social Behaviour Grouping

### Anti-social behaviour

**Data to be provided a month in arrears.** It is gathered using Altaris closing codes as the primary data source, then RMS as the secondary data source to gather incidents not recorded within Altaris.

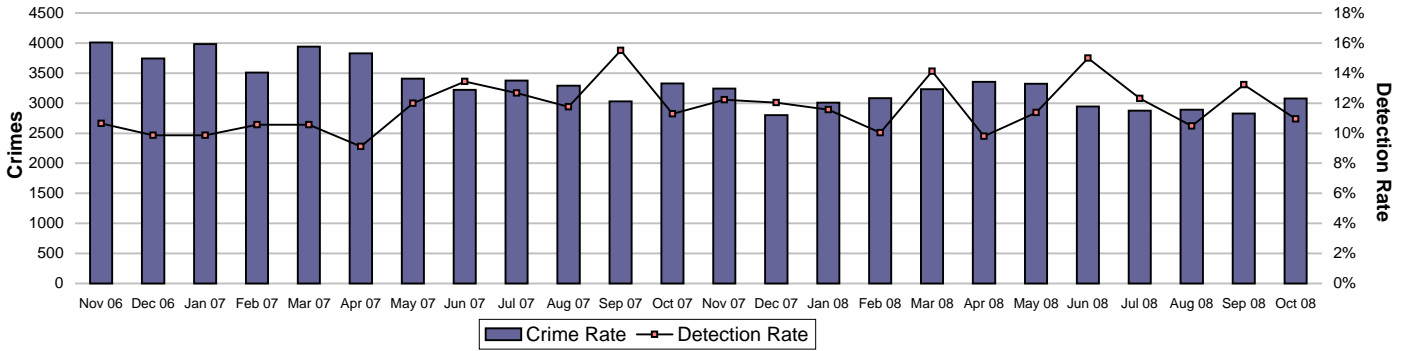
The Force total does not add up to the sum of OCUs, this is due to Altaris incident logs which do not contain a geographic location.

	Central	Isle of Wight	North & East	Portsmouth	Southampton	Western	Force
<b>YTD Apr 08 to Sep 08</b>	10972	3959	9665	7872	11863	8219	53327
<b>YTD Apr 07 to Sep 07</b>	12009	4162	9711	8788	12247	8978	56761
September	1515	544	1422	1145	1898	1126	7765
YTD Target	10047.5	3507.6	8212.4	7487.5	10214.9	7603.8	47843.7
% v target	9.2%	12.9%	17.7%	5.1%	16.1%	8.1%	11.5%
% change from 07/08	-8.6%	-4.9%	-0.5%	-10.4%	-3.1%	-8.5%	-6.0%

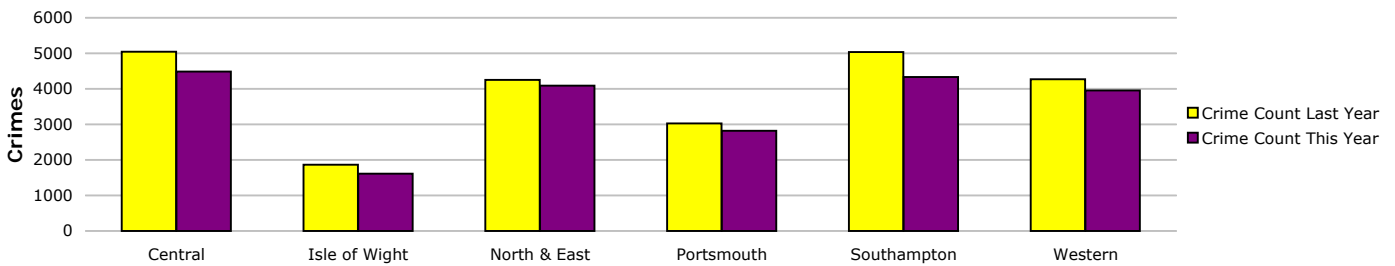
Anti-social behaviour - relates to NSIR categories Environmental Damage/Littering, Rowdy & Inconsiderate and Neighbours within the Anti-Social Behaviour Grouping

# Safer Neighbourhoods

## Criminal damage

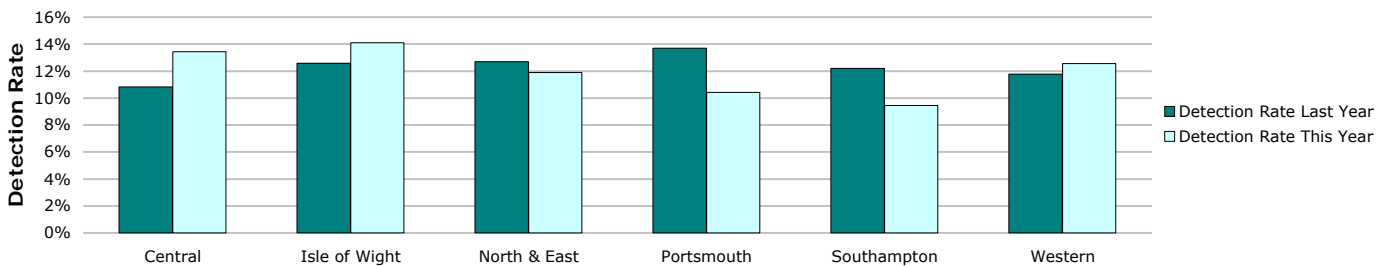


Crimes	Central	Isle of Wight	North & East	Portsmouth	Southampton	Western	Force
<b>YTD Crimes</b>	4487	1609	4093	2819	4332	3959	21299
YTD Target	4387	1575	3616	2499	4283	3713	20072
<b>YTD 07/08 Crimes</b>	5045	1861	4249	3028	5036	4266	23485
This month	705	211	654	450	568	491	3079
% change from 07/08	-11.06%	-13.54%	-3.67%	-6.90%	-13.98%	-7.20%	-9.31%
MSG position	11 of 15	13 of 15	14 of 15	7 of 9	15 of 15	14 of 15	8 of 8



Detections	Central	Isle of Wight	North & East	Portsmouth	Southampton	Western	Force
<b>YTD Detection Rate</b>	13.44%	14.11%	11.90%	10.43%	9.44%	12.55%	11.82%
This month	11.21%	14.69%	8.26%	13.33%	9.68%	11.81%	10.95%
<b>YTD 07/08 Detections</b>	10.82%	12.57%	12.71%	13.71%	12.21%	11.77%	12.14%
MSG position	9 of 15	10 of 15	13 of 15	8 of 9	15 of 15	12 of 15	8 of 8

Note: Detections refer to Sanction Detections ONLY



## Safeguard people

**Domestic violence** is defined by ACPO as: 'any incidence of threatening behaviour, violence or abuse (psychological, physical, sexual, financial or emotional) between adults, aged 18 and over, who are or have been intimate partners or family members, regardless of gender or sexuality'

### Domestic violence incident arrest rate

Domestic violence arrest rate is based on records where the occurrence has been flagged as a domestic, and has an arrest event or a linked person reason of arrested. This measure looks at all domestic incidents (not only crimes).

Target >35%

#### Year to Date

	Central	Isle of Wight	North & East	Portsmouth	Southampton	Western	Force
Domestic Incidents	2813	880	2070	2344	2973	1378	<b>12458</b>
Domestic Incident Arrests	992	321	757	607	868	689	<b>4234</b>
Domestic Incident Arrest Rate	35.26%	36.48%	36.57%	25.90%	29.20%	50.00%	<b>33.99%</b>

#### Month

	Central	Isle of Wight	North & East	Portsmouth	Southampton	Western	Force
Domestic Incidents	346	123	258	286	426	174	<b>1613</b>
Domestic Incident Arrests	116	41	87	66	108	87	<b>505</b>
Domestic Incident Arrest Rate	33.53%	33.33%	33.72%	23.08%	25.35%	50.00%	<b>31.31%</b>

### Domestic violence victimisation

Placeholder - This measure was a joint APACS and National Indicator Set measure looking at the work of MARACS. This measure was dropped from the 2008/09 APACS guidance, however is expected to be included in the 2009/10 guidance, at which time technical guidance will be published to enable reporting.

### Repeat victims of domestic violence

#### Incidents

	Central	Isle of Wight	North & East	Portsmouth	Southampton	Western	Force
YTD All Domestic Violence	2813	880	2070	2344	2973	1378	<b>12458</b>
YTD 07/08 All Domestic Violence	2596	830	1759	2272	2626	1596	<b>11679</b>
YTD Repeat Victims	1186	375	643	1263	1044	556	<b>5067</b>
YTD 07/08 Repeat Victims	1123	330	592	1156	782	565	<b>4548</b>
YTD % Repeat Victims	42.2%	42.6%	31.1%	53.9%	35.1%	40.3%	<b>40.7%</b>
YTD 07/08% Repeat Victims	43.3%	39.8%	33.7%	50.9%	29.8%	35.4%	<b>38.9%</b>

#### Crimes - Target -5% in repeat victims

	Central	Isle of Wight	North & East	Portsmouth	Southampton	Western	Force
YTD All Domestic Violence	1221	368	888	744	1149	804	<b>5174</b>
YTD 07/08 All Domestic Violence	1223	380	844	805	1051	777	<b>5080</b>
YTD Repeat Victims	284	86	209	207	345	175	<b>1306</b>
YTD 07/08 Repeat Victims	327	74	155	242	246	141	<b>1185</b>
YTD % Repeat Victims	23.3%	23.4%	23.5%	27.8%	30.0%	21.8%	<b>25.2%</b>
YTD 07/08% Repeat Victims	26.7%	19.5%	18.4%	30.1%	23.4%	18.1%	<b>23.3%</b>
% change in repeat victims from 07/08	-13.1%	16.2%	34.8%	-14.5%	40.2%	24.1%	<b>10.2%</b>

Note: Crimes are a subset of the incident data. This data reflects ALL crime types, and is not restricted to 'violent' offences

#### Crimes - This month

	Central	Isle of Wight	North & East	Portsmouth	Southampton	Western	Force
This month All Domestic Violence	166	46	118	90	160	103	<b>683</b>
This month Repeat Victims	39	9	21	25	50	19	<b>163</b>
This month % Repeat Victims	23.5%	19.6%	17.8%	27.8%	31.3%	18.4%	<b>23.9%</b>

### Domestic violence OBJ rate

The Office for Criminal Justice Reform is working on the breakdown as required within this Summary which will be available shortly. The Tier 3 "other offences" measure includes the domestic violence OBJ rate which currently cannot be individually extracted. The table below shows the percentage of persons brought to justice for "other offences" which includes domestic violence (DV) incidents against the total number of DV incidents.

OBJ Crime category	OBJ Rate				
	Apr 2008	May 08	Jun 2008	Jul 2008	Rolling average
Tier 3: Other Offences	29%	24%	26%	32%	29%

## Safeguard people

### Hate crime detection rate

Hate Crime includes all crimes flagged within RMS with a Hate Crime indicator excluding those flagged purely as Police or Domestic.

Target >45%

<b>Year to Date</b>	Central	Isle of Wight	North & East	Portsmouth	Southampton	Western	Force
Incidents	339	93	310	347	571	226	<b>1886</b>
Crimes	174	71	181	231	363	164	<b>1184</b>
Detections	57	28	58	64	131	64	<b>402</b>
Detection Rate	<b>32.76%</b>	<b>39.44%</b>	<b>32.04%</b>	<b>27.71%</b>	<b>36.09%</b>	<b>39.02%</b>	<b>33.95%</b>

<b>Month</b>	Central	Isle of Wight	North & East	Portsmouth	Southampton	Western	Force
Incidents	39	13	38	45	80	29	<b>244</b>
Crimes	30	7	32	31	49	19	<b>168</b>
Detections	9	2	11	7	12	8	<b>49</b>
Detection Rate	<b>30.00%</b>	<b>28.57%</b>	<b>34.38%</b>	<b>22.58%</b>	<b>24.49%</b>	<b>42.11%</b>	<b>29.17%</b>

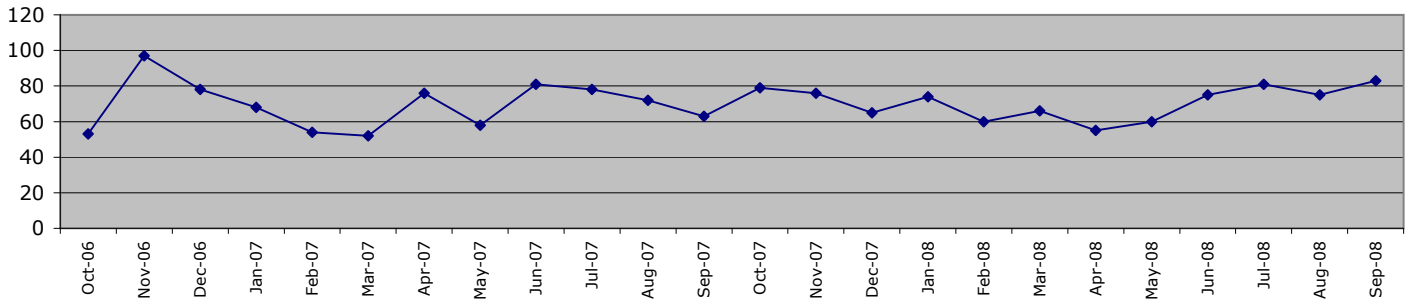
### Sexual offender reoffending rate

This indicator was contained within the draft APACS/National Indicator Set measures, however following national consultation this was removed from both sets. Hampshire has not yet identified how this target will be measured in the absence of technical guidance.

## Protect our communities

### Road traffic casualties

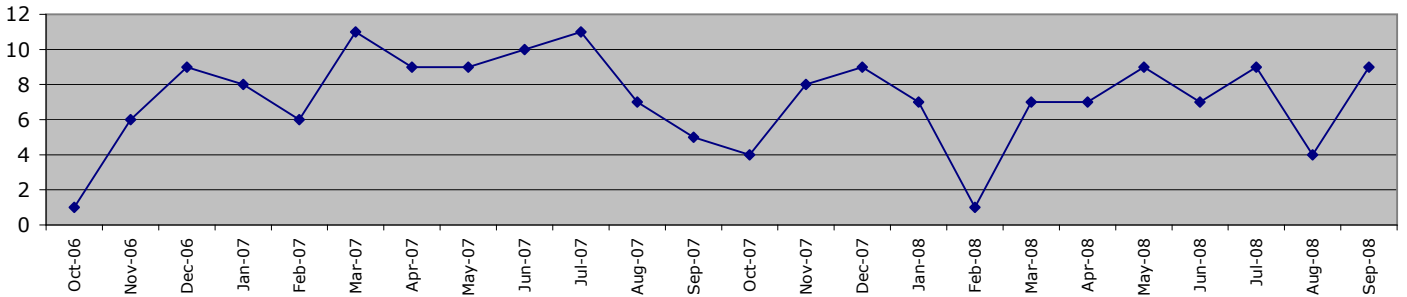
**Fatal/serious injury casualties - all victims**



The Force target 2008/2009 is for less than 938 casualties, which equates to less than 470 in 183 days      YTD Sept 2008 = 429 casualties

	Central	Isle of Wight	North&East	Portsmouth	Southampton	Western	Force
1 April 2008 - 30 September 2008	81	48	91	50	44	115	<b>429</b>
of these, fatals were	8	5	3	4	2	15	<b>37</b>
1 April 2007 - 30 September 2007	116	35	93	35	29	120	<b>428</b>

**Fatal/serious injury casualties - victims under 16 years**



The DETR target is for a 50% reduction in child casualties by 2010 from 164 to 82 (Target 2008/2009 = 94)

	Central	Isle of Wight	North&East	Portsmouth	Southampton	Western	Force
1 April 2008 - 30 September 2008	8	7	8	6	8	8	<b>45</b>
of these, fatals were	0	0	0	0	0	2	<b>2</b>
1 April 2007 - 30 September 2007	11	4	8	14	4	10	<b>51</b>

NOTE: YTD numbers may change as the accident record data are updated each month

NOTE: The casualties in East Hampshire have all been attributed to North & East OCU in the absence of a breakdown by OCUs

# Prevent, reduce and detect crime

## Serious violent crime

Serious violent crime consists of crimsec codes 1, 2, 4.1-4.4, 4.6, 4.8, 5A, 5B, 5C, 8F, 8H and 37.1

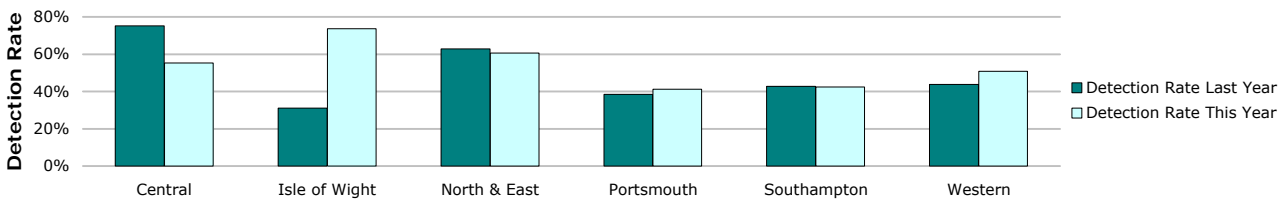


Crimes	Central	Isle of Wight	North & East	Portsmouth	Southampton	Western	Force
<b>YTD Crimes</b>	<b>114</b>	38	66	85	137	<b>57</b>	<b>497</b>
YTD Target	89	48	86	99	145	46	513
<b>YTD 07/08 Crimes</b>	105	45	97	117	166	57	<b>587</b>
This month	16	4	10	15	20	11	<b>76</b>
% change from 07/08	8.57%	-15.56%	-31.96%	-27.35%	-17.47%	0.00%	<b>-15.33%</b>
MSG position	<b>2 of 15</b>	<b>5 of 15</b>	<b>8 of 15</b>	<b>2 of 15</b>	<b>13 of 15</b>	<b>1 of 15</b>	<b>5 of 8</b>



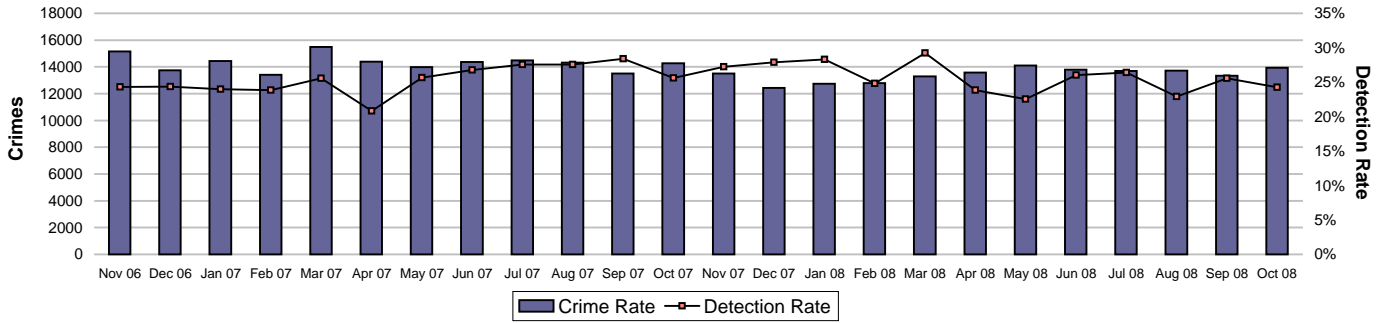
Detections	Central	Isle of Wight	North & East	Portsmouth	Southampton	Western	Force
Target >50%							
<b>YTD Detection Rate</b>	55.26%	73.68%	60.61%	<b>41.18%</b>	<b>42.34%</b>	50.88%	<b>50.91%</b>
This month	93.75%	125.00%	<b>20.00%</b>	<b>26.67%</b>	<b>40.00%</b>	63.64%	<b>53.95%</b>
<b>YTD 07/08 Detections</b>	75.24%	31.11%	62.89%	38.46%	42.77%	43.86%	<b>50.26%</b>
MSG position	<b>7 of 15</b>	<b>3 of 15</b>	<b>4 of 15</b>	<b>3 of 9</b>	<b>9 of 15</b>	<b>3 of 15</b>	<b>2 of 8</b>

Note: Detections refer to Sanction Detections ONLY



# Prevent, reduce and detect crime

## All crime



Crimes	Central	Isle of Wight	North & East	Portsmouth	Southampton	Western	Force
<b>YTD Crimes</b>	19453	6647	18181	14723	19914	17275	<b>96193</b>
YTD Target	19186	6485	17615	14530	19824	16161	<b>93802</b>
<b>YTD 07/08 Crimes</b>	19911	7199	18277	15489	21081	17407	<b>99364</b>
This month	2905	823	2740	2152	2871	2445	<b>13936</b>
% change from 07/08	-2.30%	-7.67%	-0.53%	-4.95%	-5.54%	-0.76%	<b>-3.19%</b>
MSG position	<b>8 of 15</b>	<b>11 of 15</b>	<b>12 of 15</b>	<b>7 of 9</b>	<b>14 of 15</b>	<b>12 of 15</b>	<b>6 of 8</b>



Detections	Central	Isle of Wight	North & East	Portsmouth	Southampton	Western	Force
Target >25%							
<b>YTD Detection Rate</b>	23.59%	32.13%	25.37%	25.40%	23.32%	<b>22.29%</b>	<b>24.50%</b>
This month	23.34%	40.95%	<b>21.61%</b>	25.23%	23.02%	23.39%	<b>24.28%</b>
<b>YTD 07/08 Detections</b>	24.08%	30.88%	27.83%	27.39%	26.11%	23.12%	<b>26.04%</b>
MSG position	<b>13 of 15</b>	<b>7 of 15</b>	<b>11 of 15</b>	<b>2 of 9</b>	<b>12 of 15</b>	<b>14 of 15</b>	<b>5 of 8</b>

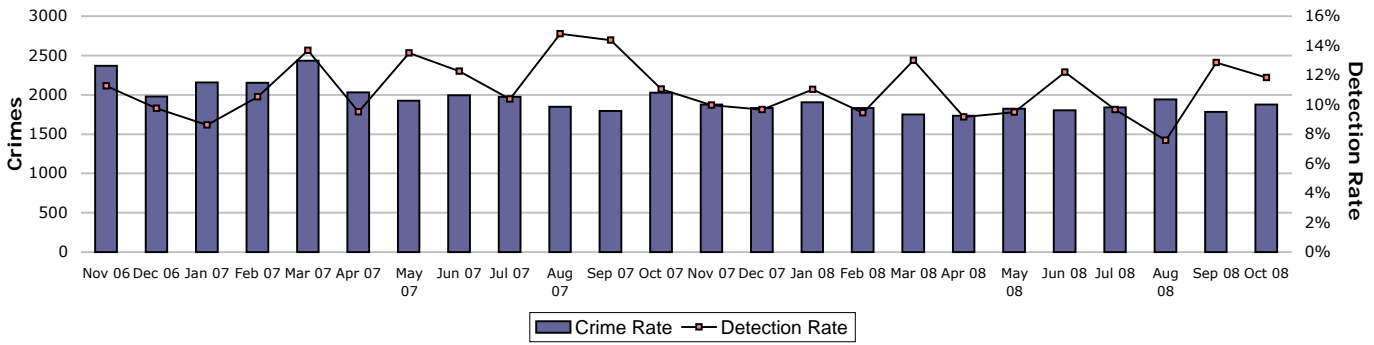
Note: Detections refer to Sanction Detections ONLY



# Prevent, reduce and detect crime

## Serious acquisitive crime

Serious acquisitive crime consists of crimsec codes 28, 29, 34A, 34B, 37/2, 45 and 48

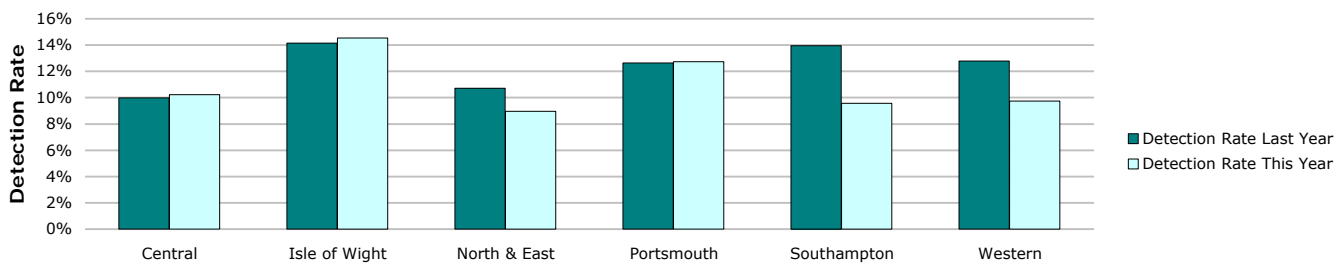


Crimes	Central	Isle of Wight	North & East	Portsmouth	Southampton	Western	Force
<b>YTD Crimes</b>	2269	543	2458	2253	2788	2493	12804
YTD Target	2321	557	2564	2152	2918	2605	13117
<b>YTD 07/08 Crimes</b>	2422	622	2474	2395	2930	2754	13597
This month	364	64	368	336	383	362	1877
% change from 07/08	-6.32%	-12.70%	-0.65%	-5.93%	-4.85%	-9.48%	-5.83%
MSG position	3 of 15	1 of 15	7 of 15	3 of 9	6 of 15	10 of 15	2 of 8



Detections	Central	Isle of Wight	North & East	Portsmouth	Southampton	Western	Force
<b>YTD Detection Rate</b>	10.22%	14.55%	8.95%	12.74%	9.58%	9.75%	10.37%
This month	9.34%	14.06%	5.16%	27.38%	9.40%	8.84%	11.83%
<b>YTD 07/08 Detections</b>	9.99%	14.15%	10.71%	12.65%	13.96%	12.78%	12.20%
MSG position	11 of 15	5 of 15	14 of 15	5 of 9	12 of 15	10 of 15	6 of 8

Note: Detections refer to Sanction Detections ONLY



## Prevent, reduce and detect crime

### Serious acquisitive crime breakdown

#### Robbery

Year to date	Central	Isle of Wight	North & East	Portsmouth	Southampton	Western	Force
Crimes	63	9	92	135	263	95	657
Trigger point	79	29	86	131	201	88	613
07/08 crimes	90	31	86	144	213	85	649
% change from 07/08	-30.00%	-70.97%	6.98%	-6.25%	23.47%	11.76%	1.23%

Detection rate	25.40%	33.33%	21.74%	9.63%	16.35%	26.32%	18.26%
----------------	--------	--------	--------	-------	--------	--------	--------

October 2008	Central	Isle of Wight	North & East	Portsmouth	Southampton	Western	Force
Crimes	7	0	8	21	52	11	99
Detection rate	28.57%	n/a	25.00%	4.76%	11.54%	18.18%	13.13%

#### Dwelling burglary

Year to date	Central	Isle of Wight	North & East	Portsmouth	Southampton	Western	Force
Crimes	617	191	762	779	541	584	3474
Trigger point	553	159	617	587	569	527	3013
07/08 crimes	569	186	594	669	528	529	3075
% change from 07/08	8.44%	2.69%	28.28%	16.44%	2.46%	10.40%	12.98%

Detection rate	12.97%	22.51%	12.99%	16.30%	22.00%	19.52%	16.75%
----------------	--------	--------	--------	--------	--------	--------	--------

October 2008	Central	Isle of Wight	North & East	Portsmouth	Southampton	Western	Force
Crimes	105	12	126	121	70	85	519
Detection rate	10.48%	25.00%	6.35%	42.98%	24.29%	5.88%	18.50%

#### Vehicle crime

Year to date	Central	Isle of Wight	North & East	Portsmouth	Southampton	Western	Force
Theft of crimes	351	82	425	322	471	366	2017
Theft from crimes	1238	261	1179	1017	1513	1448	6656
Total vehicle crimes	1589	343	1604	1339	1984	1814	8673
Trigger point	1689	369	1860	1433	2148	1990	9489
07/08 crimes	1763	405	1794	1582	2189	2140	9873
% change from 07/08	-9.87%	-15.31%	-10.59%	-15.36%	-9.37%	-15.23%	-12.15%

Detection rate	8.56%	9.62%	6.30%	10.98%	5.29%	5.73%	7.22%
----------------	-------	-------	-------	--------	-------	-------	-------

October 2008	Central	Isle of Wight	North & East	Portsmouth	Southampton	Western	Force
Theft of crimes	64	12	57	42	57	55	287
Theft from crimes	188	40	177	152	204	211	972
Total vehicle crimes	252	52	234	194	261	266	1259
Detection rate	8.33%	11.54%	3.85%	20.10%	4.98%	9.40%	8.98%

Robbery, burglary and vehicle crime are the component parts of serious acquisitive crime. These individual crime types do not have targets. Trigger points are included here; these add up to the serious acquisitive target and are calculated based on the breakdown of these crimes in 07/08.

## Prevent, reduce and detect crime

### Gun crime rate

	Central	Isle of Wight	North & East	Portsmouth	Southampton	Western	Force
YTD October 2008	18	2	20	11	16	14	<b>81</b>
YTD October 2007	18	8	21	10	16	11	<b>84</b>
% change from 07/08	0.0%	-75.0%	-4.8%	10.0%	0.0%	27.3%	<b>-3.6%</b>

Gun crime figures published reflect the APACS technical definition for 2008/09 which differs from that used in 2007/08. Manual checking has been undertaken to try to provide comparative 2007/08 figures, however it is not possible to provide completed comparable figures. In 2008/09 gun crime includes "where the victim is convinced of the presence of a firearm, even if it is concealed and there is evidence of the suspect's intention to create this impression"; these occurrences were not included in previously published 2007/08 data.

### Knife crime rate

	Central	Isle of Wight	North & East	Portsmouth	Southampton	Western	Force
YTD October 2008	85	19	78	68	140	57	<b>447</b>
YTD October 2007	80	22	81	111	125	59	<b>478</b>
% change from 07/08	6.3%	-13.6%	-3.7%	-38.7%	12.0%	-3.4%	<b>-6.5%</b>

**Knife** = knife or other sharp instrument (including broken glass/bottles) piercing the skin or, for threats and attempts, instruments normally capable of piercing the skin

Knife crime figures published reflect the APACS technical definition for 2008/09 which differs from that used in 2007/08. Manual checking has been undertaken to try to provide comparative 2007/08 figures, however it is not possible to provide completed comparable figures. In 2008/09 knife crime includes "where the victim is convinced of the presence of a knife, even if it is concealed and there is evidence of the suspect's intention to create this impression"; these occurrences were not included in previously published 2007/08 data.

### Serious sexual crime OBJ rate

The table below shows the percentage of persons brought to justice for serious sexual crimes against the total number of serious sexual crimes

OBJ Crime category	OBJ Rate				
	Apr 2008	May 2008	Jun 2008	Jul 2008	Rolling average
Tier 1: Serious Sexual Offences	36%	14%	53%	36%	33%

### Murder offences

2008/2009 target = <16 murder offences

	Central	Isle of Wight	North & East	Portsmouth	Southampton	Western	Force
YTD October 2008	0	0	0	0	3	1	<b>4</b>
YTD October 2007	3	0	3	4	1	2	<b>13</b>
% change from 07/08							<b>-69.2%</b>

For more information, please go to the Specialist Operations - 7 OCU page

### Asset recovery

Asset recovery is the sum total of the values of cash forfeitures and confiscation orders

	Central	Isle of Wight	North & East	Portsmouth	Southampton	Western	Force
April 2008	£38,187.90	£0.00	£18,413.50	£0.00	£0.00	£0.00	<b>£56,601.40</b>
May 2008	£0.00	£0.00	£0.00	£0.00	£69,735.00	£0.00	<b>£69,735.00</b>
June 2008	£76,739.37	£0.00	£146,538.50	£0.00	£8,676.00	£4,693.00	<b>£236,646.87</b>
July 2008	£0.00	£0.00	£0.00	£1,104.00	£2,035.00	£2,100.00	<b>£5,239.00</b>
August 2008	£0.00	£0.00	£22,699.60	£0.00	£15,469.55	-£19,520.00	<b>£18,649.15</b>
September 2008	£0.00	£0.00	£1,175.00	£4,447.95	£221,549.03	£21,427.00	<b>£248,598.98</b>
October 2008	£9,273.38	£1,956.76	£60,660.00	£5,400.00	£0.00	£0.00	<b>£77,290.14</b>
Cumulative total	<b>£124,200.65</b>	<b>£1,956.76</b>	<b>£249,486.60</b>	<b>£10,951.95</b>	<b>£317,464.58</b>	<b>£8,700.00</b>	<b>£712,760.54</b>

### Prolific and other Priority Offenders (PPOs) convictions

Number of convictions recorded against identified, prolific and other priority offenders

Convictions	Jul 2008	Aug 2008	Sep 2008
Persistent Young Offenders	122	No data	74
Priority Prolific Offenders	18	No data	20
Persistent Priority Prolific Young Offenders	1	No data	2
Young Offenders	209	No data	194

Note: The August 2008 data is not available due to issues with the Criminal Justice Management Information System (CJMIS)

### Class A drugs sanction detections

	Central	Isle of Wight	North & East	Portsmouth	Southampton	Western	YTD October 2008 target			235
							Crime	Operations	No OIC	Force
YTD October 2008	9	28	41	18	49	33	36	1	3	<b>218</b>
YTD October 2007	24	14	41	18	16	8	9	4	9	<b>143</b>

### Drug Intervention Measures (DIMs)

	Central	Isle of Wight	North & East	Portsmouth	Southampton	Western	Crime	Force
YTD October 2008	No data received							0
YTD October 2007	4	16	52	5	28	12	0	117
% change from 07/08	No data received							0

Note: The large variance between YTD 2007 and YTD 2008 is partially due to changes in the process for submissions up until Sept 07

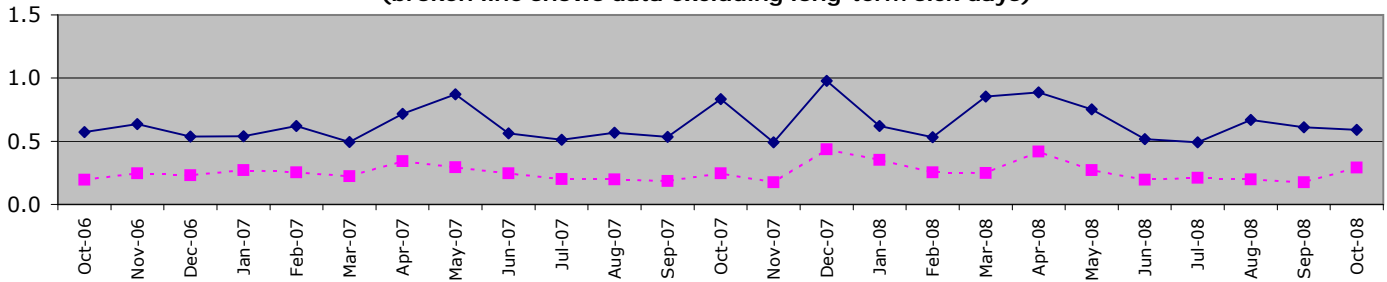
# Organisational management

All Police officer sickness YTD = **4.52**

All Police officer sickness Oct = **0.60**

## Police officers in OCUs

**Sickness and injury absence days per officer by month  
(broken line shows data excluding long-term sick days)**

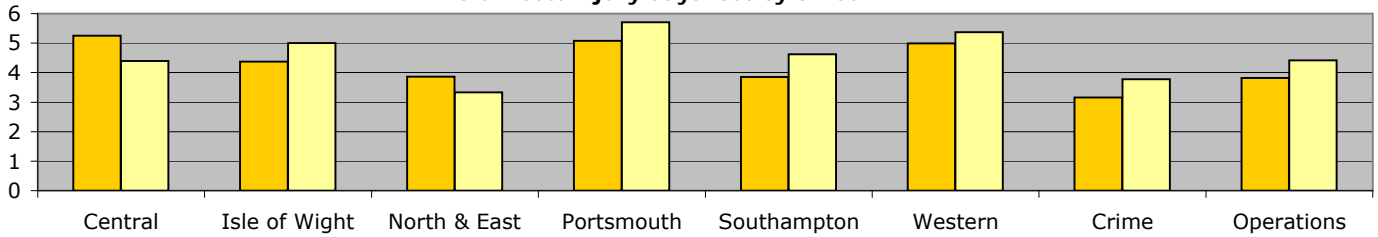


Force target for 08/09 = 7.5 days or fewer per officer (4.38 for 7 months) **YTD = 4.52 days lost per officer**

	Central	Isle of Wight	North & East	Portsmouth	Southampton	Western	Crime	Operations	OCU Totals
YTD Apr 08 - October 08	4.40	5.00	3.33	5.71	4.62	5.37	3.77	4.42	4.52
YTD Apr 07 - October 07	5.25	4.37	3.86	5.08	3.86	4.99	3.16	3.82	4.34
This month	0.55	0.63	0.48	0.61	0.60	0.67	0.54	0.71	0.59
% change	-16.3%	14.4%	-13.7%	12.4%	19.7%	7.6%	19.5%	15.7%	4.2%

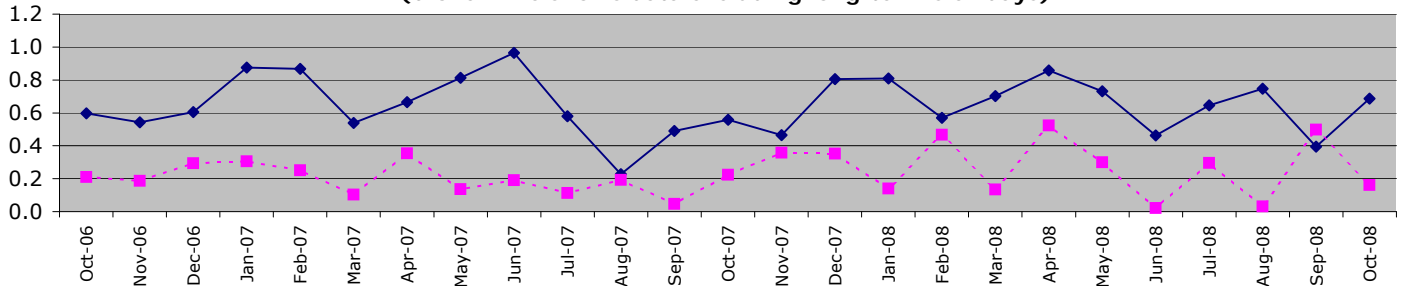
"Operations" includes SO Portfolio and Projects Staff

**Sickness/injury days lost by officer YTD**



## Police officers not in OCUs

**Sickness and injury absence days per police officer by month  
(broken line shows data excluding long-term sick days)**

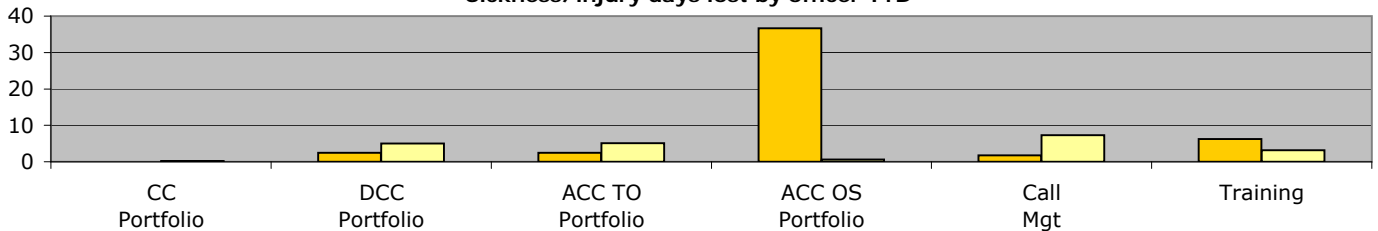


Force target for 08/09 = 7.5 days or fewer per officer (4.38 for 7 months) **YTD = 4.53 days lost per officer**

	CC Portfolio	DCC Portfolio	ACC TO Portfolio	ACC OS Portfolio	DoF Portfolio	Call Mgt	Training	Non-OCU Totals
YTD Apr 08 - October 08	0.18	5.00	5.06	0.63	N/A	7.31	3.14	4.53
YTD Apr 07 - October 07	0.00	2.48	2.43	36.67	N/A	1.78	6.25	4.45
This month	0.00	0.60	0.93	0.00	N/A	0.92	0.64	0.69
% change	N/A	101.7%	108.3%	-98.3%	N/A	310.1%	-49.7%	1.9%

ACC OS Portfolio excludes Call Mgt & Training figures which are reported on separately. No police officers work within DoF Portfolio.

**Sickness/injury days lost by officer YTD**



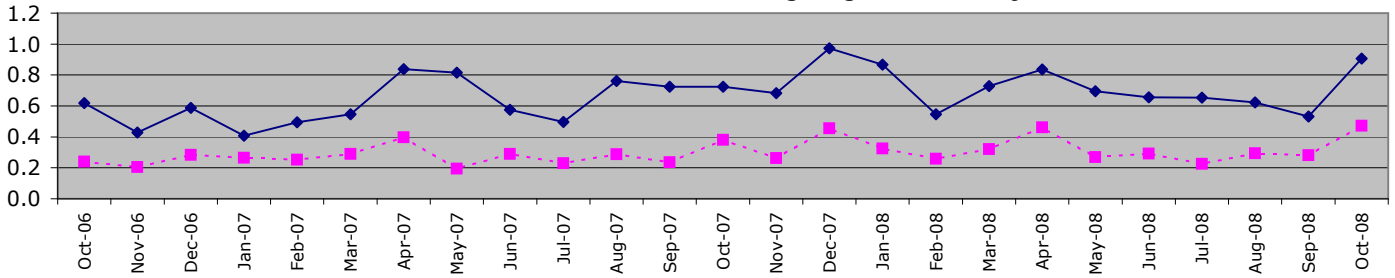
## Organisational management

All Police staff sickness YTD = **4.89**

All Police staff sickness Oct = **0.89**

### Police staff in OCUs

**Sickness and injury absence days per police staff member by month  
(broken line shows data excluding long-term sick days)**

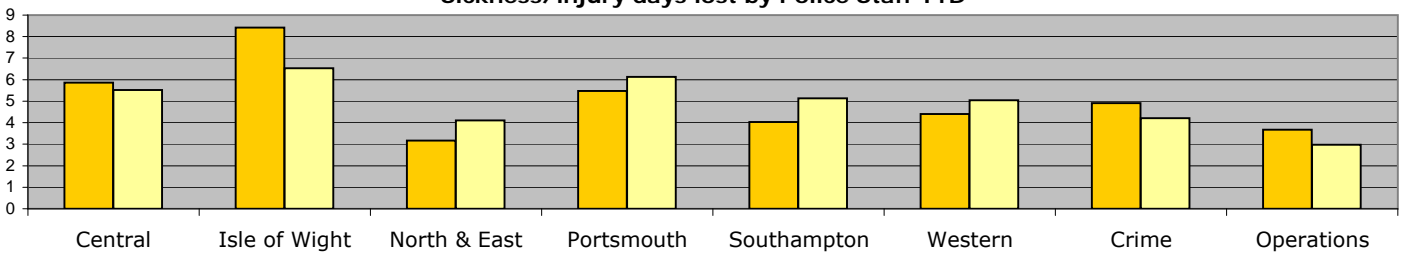


Force target for 08/09 = 7.5 days or fewer per staff (4.38 for 7 months) **YTD = 4.90 days lost per staff member**

	Central	Isle of Wight	North & East	Portsmouth	Southampton	Western	Crime	Operations	OCU Totals
YTD Apr 08 - October 08	<b>5.52</b>	<b>6.53</b>	4.11	<b>6.13</b>	<b>5.13</b>	<b>5.04</b>	4.21	2.97	<b>4.90</b>
YTD Apr 07 - October 07	5.86	8.42	3.17	5.48	4.02	4.41	4.91	3.68	<b>4.83</b>
This month	0.85	1.30	0.61	1.05	1.38	1.06	0.56	0.71	<b>0.91</b>
% change	-5.7%	-22.4%	29.7%	12.0%	27.4%	14.3%	-14.3%	-19.2%	<b>1.4%</b>

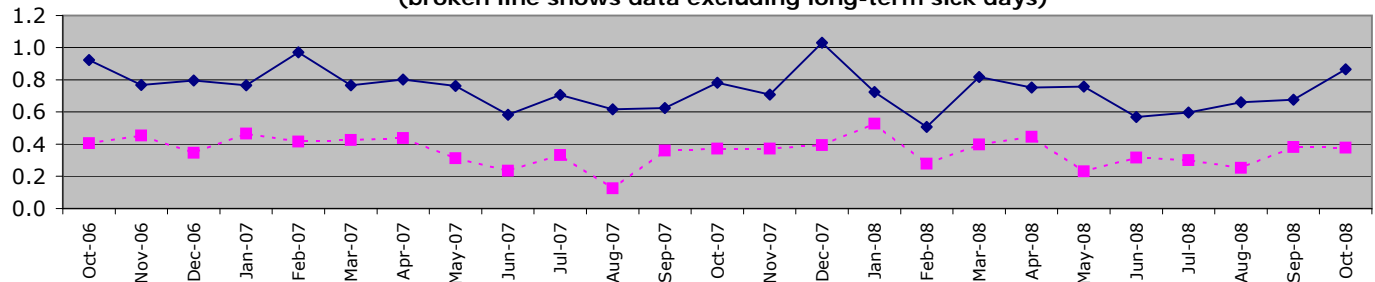
"Operations" includes SO Portfolio and Projects Staff

**Sickness/injury days lost by Police Staff YTD**



### Police staff not in OCUs

**Sickness and injury absence days per police staff member by month  
(broken line shows data excluding long-term sick days)**

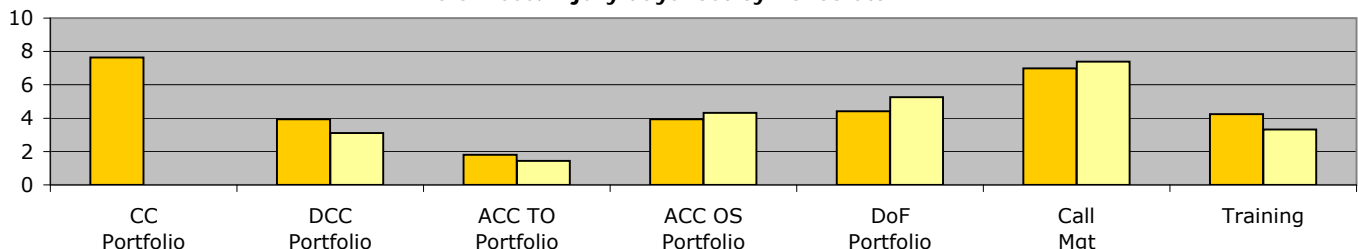


Force target for 08/09 = 7.5 days or fewer per staff (4.38 for 7 months) **YTD = 4.88 days lost per staff member**

	CC Portfolio	DCC Portfolio	ACC TO Portfolio	ACC OS Portfolio	DoF Portfolio	Call Mgt	Training	Non-OCU Totals
YTD Apr 08 - October 08	<b>0.00</b>	3.10	1.44	4.32	<b>5.25</b>	<b>7.39</b>	3.33	<b>4.88</b>
YTD Apr 07 - October 07	7.64	3.94	1.81	3.93	4.42	7.00	4.25	<b>4.93</b>
This month	0.00	0.63	0.31	0.54	0.97	1.12	0.62	<b>0.79</b>
% change	-100.0%	-21.2%	-20.7%	10.1%	18.8%	5.6%	-21.7%	<b>-1.0%</b>

ACC OS Portfolio excludes Call Mgt & Training figures which are reported on separately.

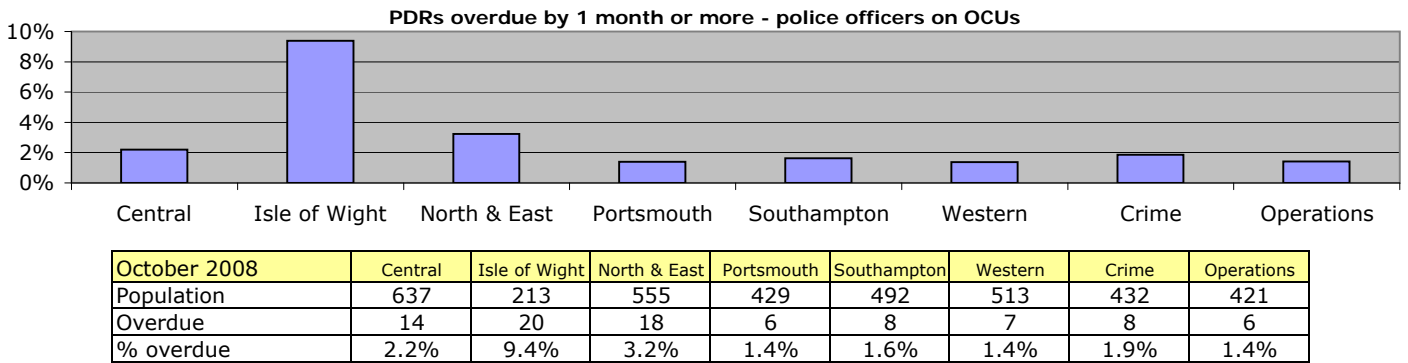
**Sickness/injury days lost by Police Staff YTD**



## Organisational management

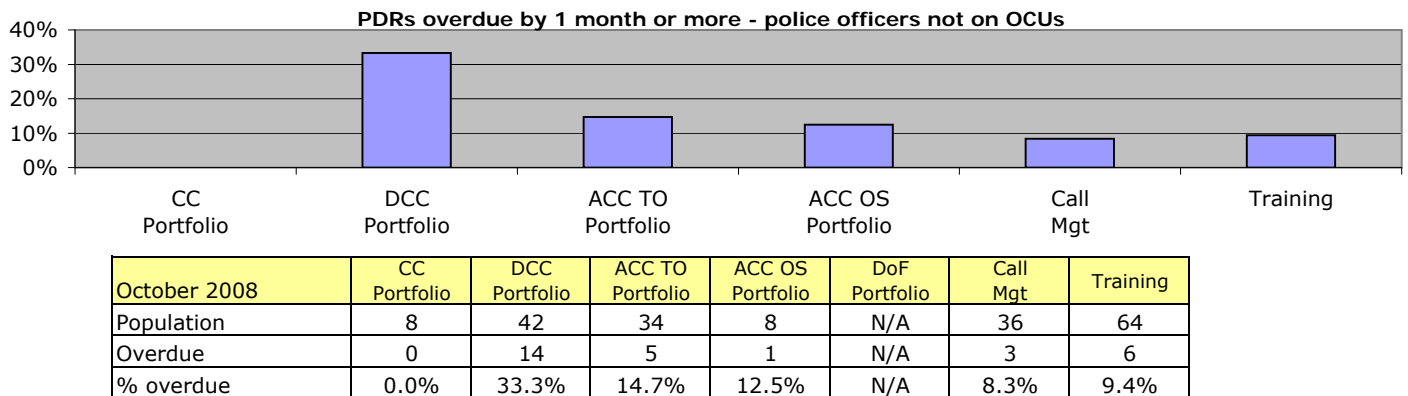
### Overdue PDRs

#### Police officer PDRs - police officers in OCUs



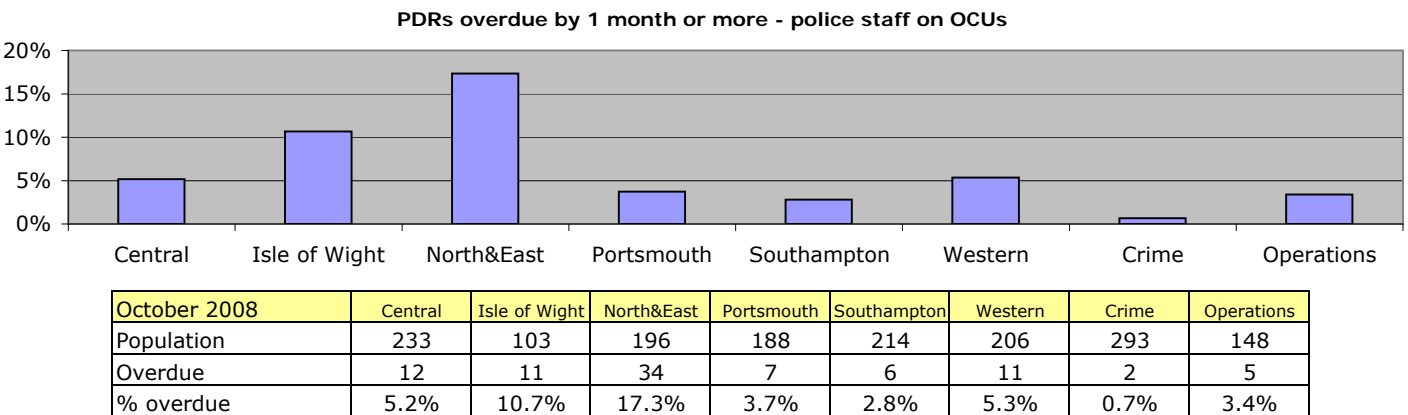
"Operations" includes SO Portfolio and Projects Staff

#### Police officer PDRs - police officers not on OCUs



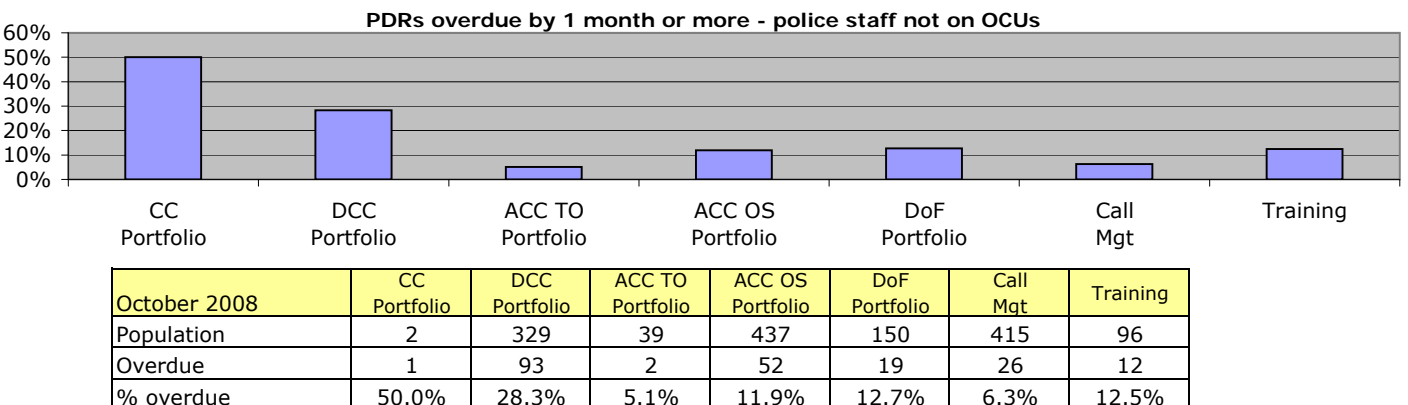
ACC OS Portfolio excludes Call Mgt & Training figures which are reported on separately. No police officers work within DoF Portfolio

#### Police staff PDRs - police staff in OCUs



"Operations" includes SO Portfolio and Projects Staff

#### Police staff PDRs - police staff not in OCUs



ACC OS Portfolio excludes Call Mgt & Training figures which are reported on separately

## Organisational management

### Minority Ethnic Officer Recruitment

	All recruits	Minority ethnic recruits	%
YTD October 2008	65	1	1.5%

### Female Officer Representation

	Male strength	Female strength	%
YTD October 2008	2794.2	1023.0	26.8%

### NCRS compliance

	Central	Isle of Wight	North & East	Portsmouth	Southampton	Western	Crime
NCRS audits	Fair 82%	Fair 82%	Fair 84%	Poor 72%	Poor 64%	Fair 85%	No data

Note: NCRS audit data relates to a rolling 12 mth period

Self-Inspection	91.0%	85.0%	80.0%	66.0%	81.0%	90.0%	No data
-----------------	-------	-------	-------	-------	-------	-------	---------

Note: Self-Inspections - only appealed records are moderated by the Force Crime Registrar

### Budget spend

The actual spend to the end of September 2008 was £144.4m. This gives a projected spend for the force at the end of the financial year of £297.7m, which will be an overspend of £2.1m against the agreed budget.

The force is taking measures to eliminate this overspend during the course of the current financial year.

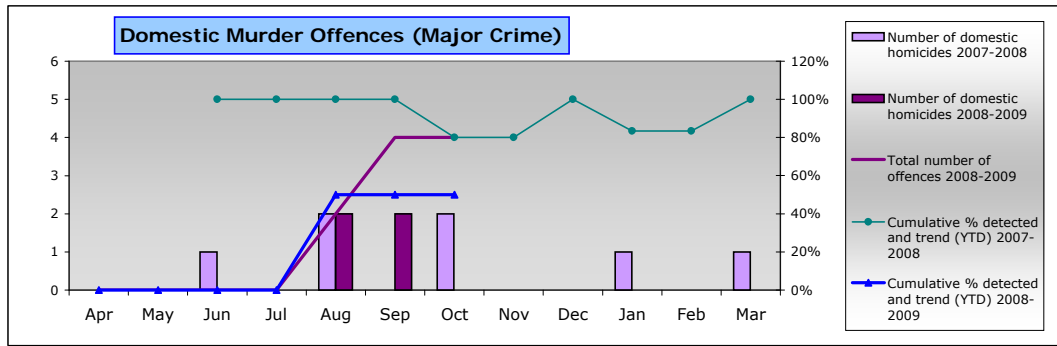
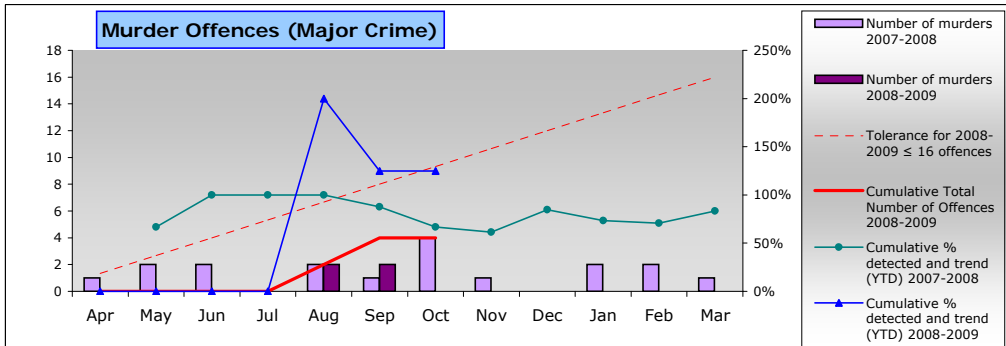
	Central	Isle of Wight	North & East	Portsmouth	Southampton	Western	Crime	Operations
Projected overspend 2008/2009	-£73,000	£21,000	£696,000	£703,000	£3,000	-£13,000	£246,000	£789,000

### Efficiency savings

The Authority needs to maximise efficiency gains both due to its budgetary constraints and in order to achieve value for money. In addition, there is a Home Office target to deliver recurring efficiency or productivity gains equivalent to 9.3% (some £30m) of the Authority's 2007/08 'Gross Revenue Expenditure' by the end of 2010/11. The Authority and Force are working to achieve, and if possible exceed, the target through initiatives identified and monitored by the Efficiency Strategy Group.

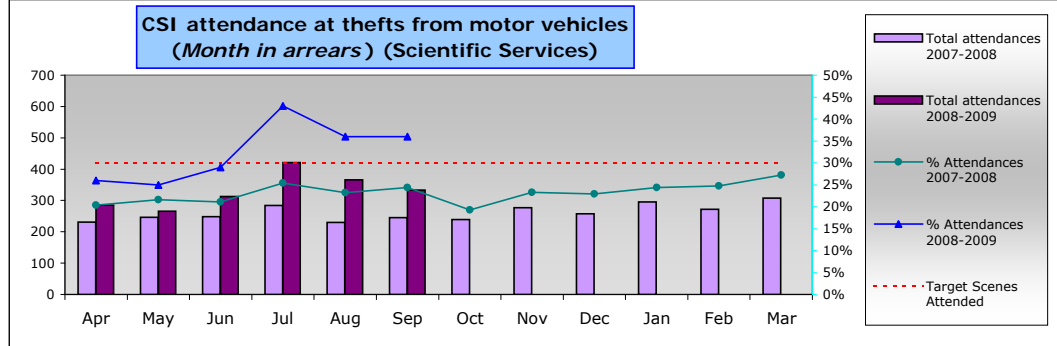
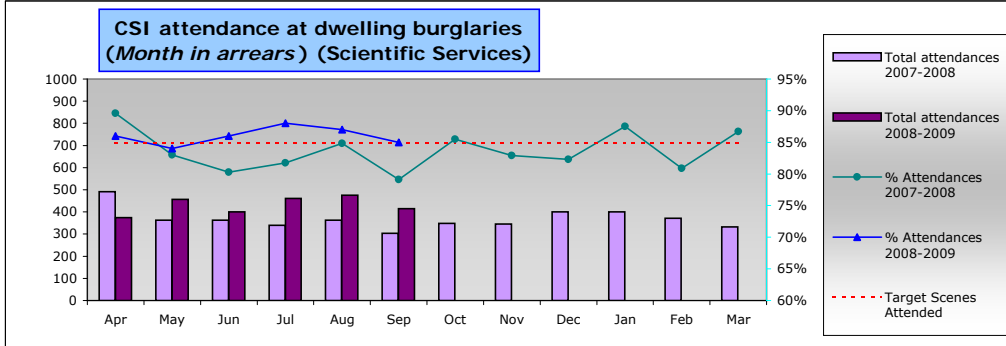
An efficiency saving register that is used as a tracking tool is now monitoring progress of ongoing efficiency initiatives valued at £16.06m across the current and future financial years. Some of the initiatives listed are not in a position yet to quantify the potential efficiency savings deliverable. It will be seen that there are also a number of initiatives listed on the register which are only at the start up stage of the project life cycle and are unlikely to deliver productivity gains within the required timeframe: they are nonetheless important as efficiency is an ongoing long term requirement.

Specialist Operations - 7 OCU



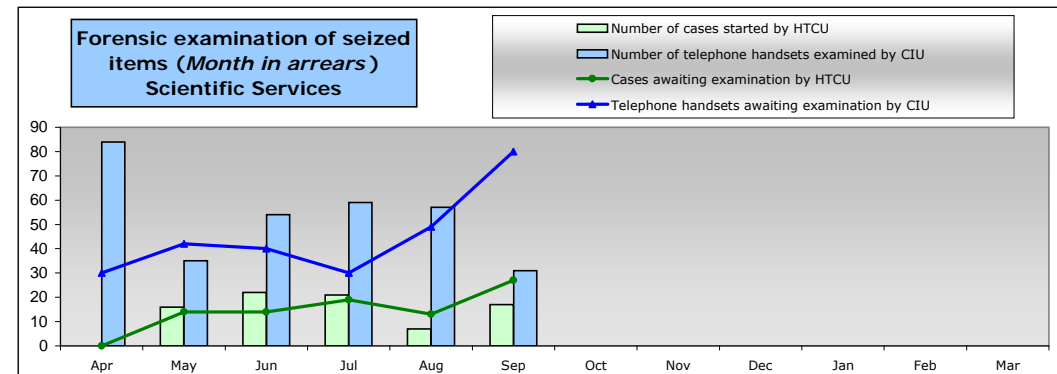
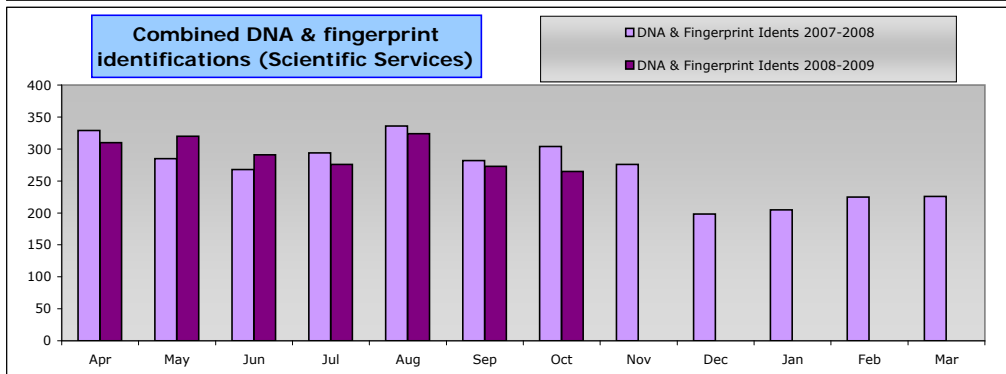
**All murder offences this year compared to last year and detection rates**  
 The target is no more than 16 offences for the current year  
 Detection target for murder is 100%

**Domestic murder offences this year compared to last year and detection rates**  
 Detection target for murder is 100%



**Burglary dwelling scene attendance rates. Target is no less than 85%**

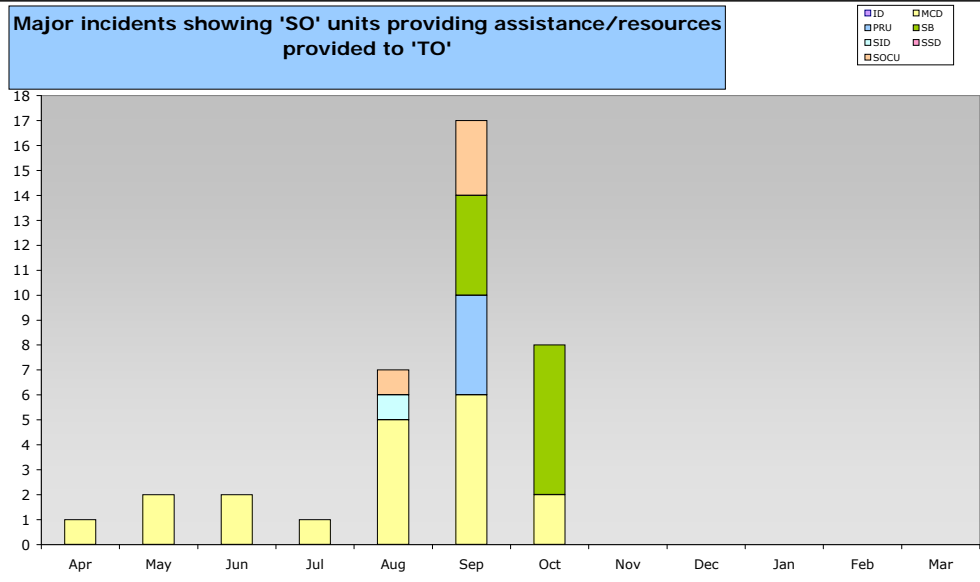
**Theft from motor vehicle scene attendance rates. Target is no less than 30%**



**Combined DNA & fingerprint identifications this year compared to last year**

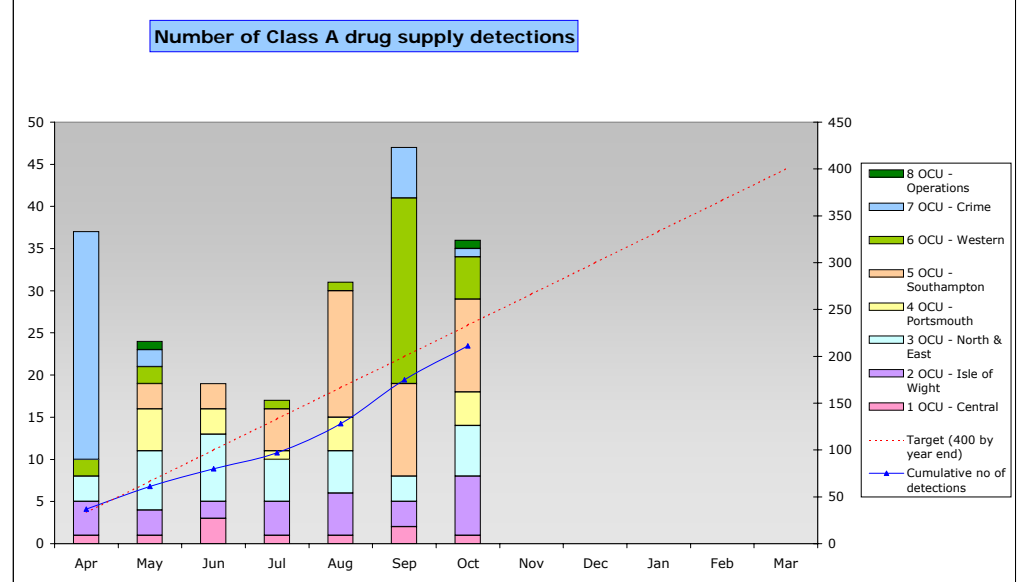
**Number of cases started & cases awaiting examination by HTCU**  
 NB: Cases include all computing equipment not just computers (eg monitors, drives, etc...)  
**Number of telephone handsets examined & telephone handsets awaiting examination by CIU**

Major incidents showing 'SO' units providing assistance/resources provided to 'TO'



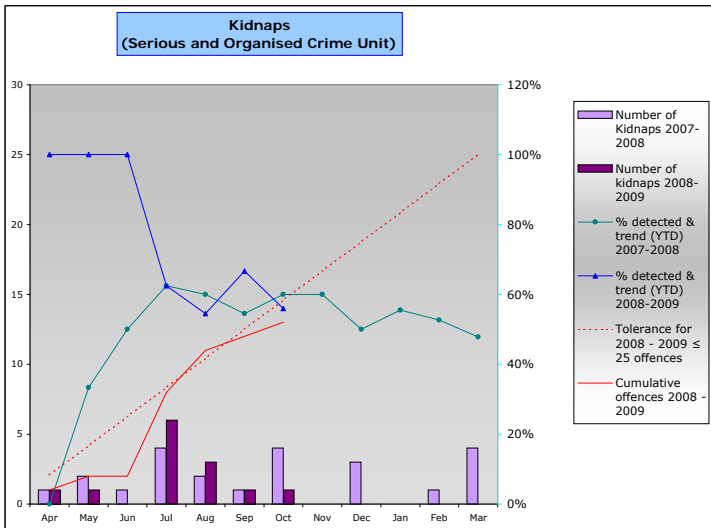
Serious/major incidents where 'SO' expertise or resources were utilised to assist or manage the investigation

Number of Class A drug supply detections



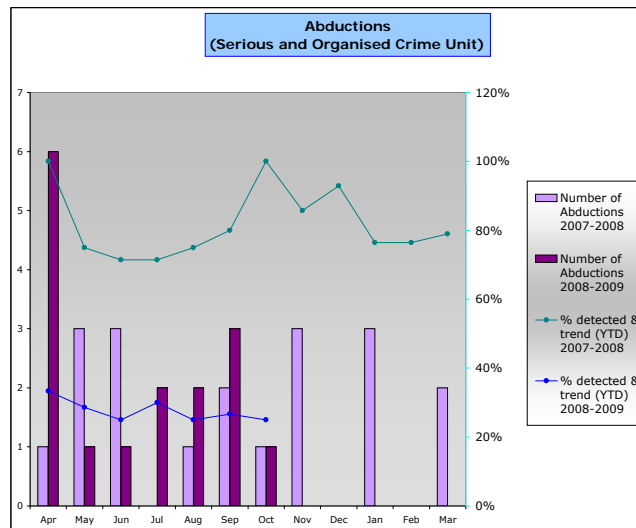
Number of detections for offences of Class A drug supply by month by OCU and total detections to date compared with Force target of 400 for year.

Kidnaps (Serious and Organised Crime Unit)



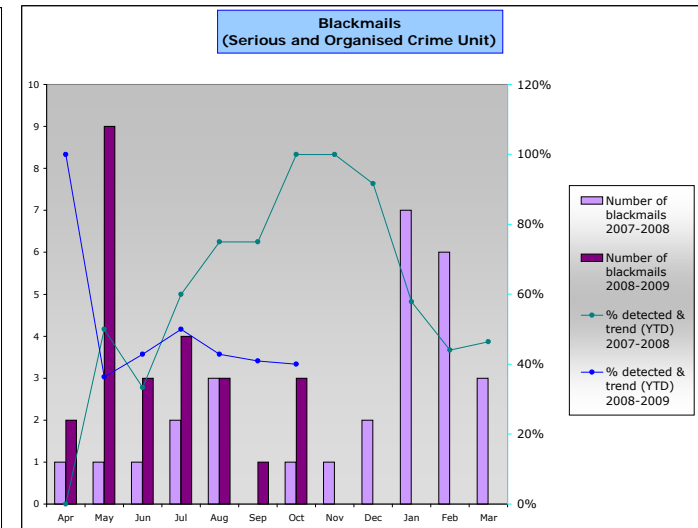
All kidnaps within force this year compared to last year and detection rates. Target for 2008/09 is no more than 25 offences (10% reduction on 2007/08)

Abductions (Serious and Organised Crime Unit)



All abductions within force this year compared to last year and detection rates

Blackmails (Serious and Organised Crime Unit)



All blackmails within force this year compared to last year and detection rates.

## Specialist Operations - 8 OCU

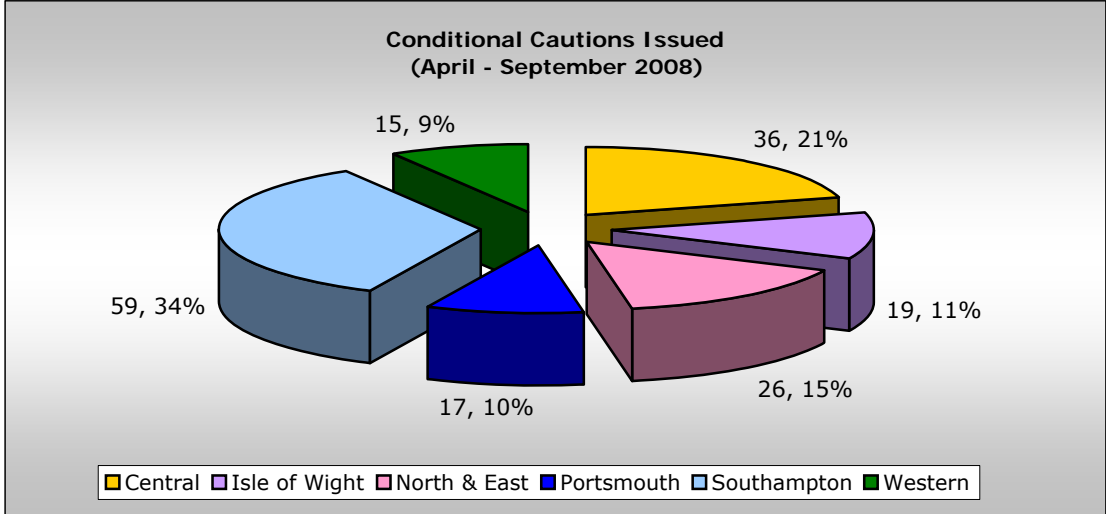
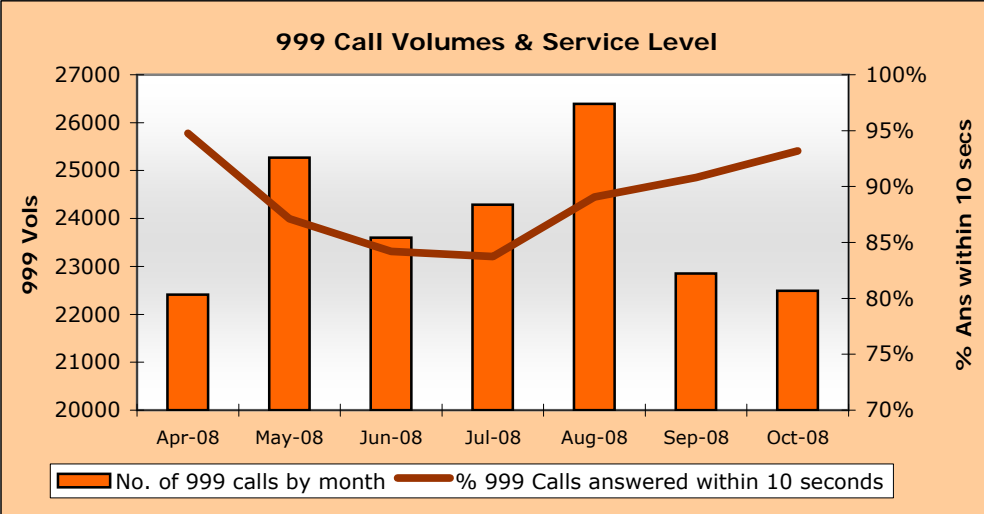
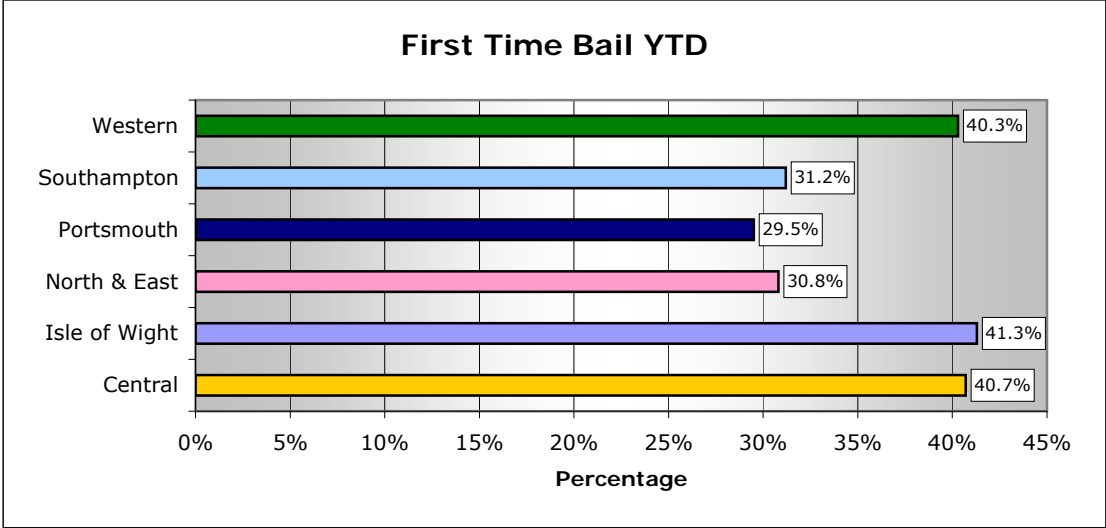
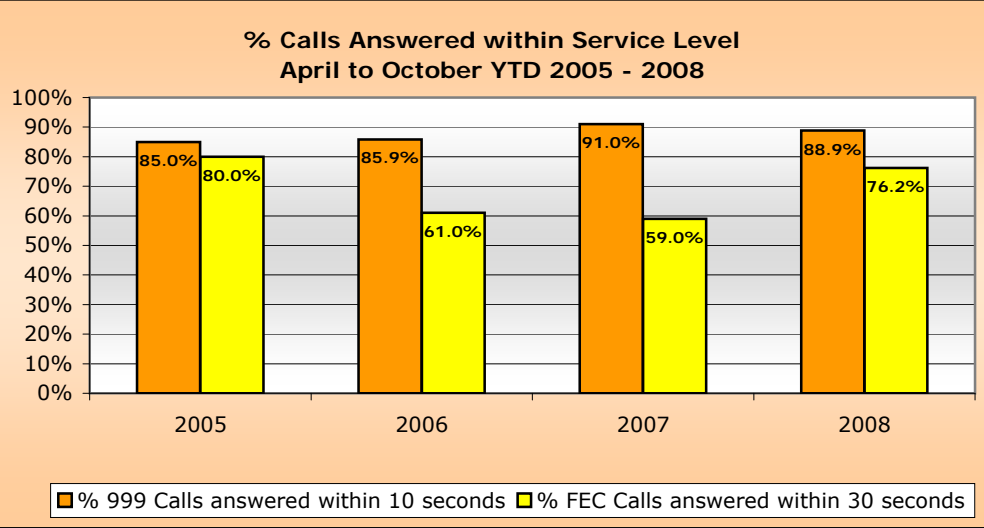
Operational Availability				
	Current	YTD 07	Current	YTD 08
ASU	95%	96%	100%	99%
CT&DE	Not previously recorded		94%	92%
DSU	77%	83%	89%	82%
FSU	75%	85%	80%	88%
MSU	99%	92%	89%	90%
OPPU	100%	95%	98%	96%
SFO	74%	77%	60%	82%
ARV	Not previously recorded		92%	90%
RPU	Not previously recorded		Not currently recorded	
<b>Total</b>	<b>89%</b>	<b>90%</b>	<b>84%</b>	<b>87%</b>

Pre-Planned Operations October								
Op. Name	OCU Supported							Total
	1	2	3	4	5	6	Other	
Radon	0	0	4	0	0	0	0	4
Advasar	0	0	2	0	0	0	0	2
Rainbow	0	0	0	0	0	2	0	2
Op Viper (VCS	0	8	0	0	0	0	0	8
Op Elmoor (VC	0	0	0	0	8	0	0	8
Other	45	11	29	25	46	49	8	213
<b>Total Ops.</b>	<b>45</b>	<b>19</b>	<b>35</b>	<b>25</b>	<b>54</b>	<b>51</b>	<b>8</b>	<b>237</b>
Arrests	9	6	6	10	37	18	1	87
FPNs	70	110	29	60	28	45	0	342
Seizures	4	1	1	3	1	1	0	11
Other	52	4	25	15	2	35	0	133
<b>Total Results</b>	<b>135</b>	<b>121</b>	<b>61</b>	<b>88</b>	<b>68</b>	<b>99</b>	<b>1</b>	<b>573</b>

ANPR Operations October								
	OCU Supported							Total
	1	2	3	4	5	6	Other	
No. of Ops	4	5	3	0	3	4	0	19
Arrests	1	0	0	0	4	2	0	7
FPNs	9	12	0	0	8	10	0	39
Seizures	1	2	0	0	4	1	0	8
Other	1	0	0	0	31	13	0	45
<b>Total</b>	<b>12</b>	<b>14</b>	<b>0</b>	<b>0</b>	<b>47</b>	<b>26</b>	<b>0</b>	<b>99</b>

# Operational Services

Issues of the month: Measuring **conditional cautions** since April 2008, we can see variation across the OCUs in the use of this disposal. **Bail rates** are shown YTD, demonstrating a large variance across force. This has no correlation to the OCUs' ability to secure a conviction. The October service level of 93.17% for 999 calls, brings the YTD to 89% compared to a target of 90%.



## Victim Focus

Hampshire Constabulary has always placed victim care as a high priority. With the increasing focus nationally, information is now included within this Summary to illustrate how we manage our victims of crime from initial notification of them becoming a victim to referrals to Victim Support. Also included is performance information centred around compliance with the Victims Code.

### APACS indicators for user satisfaction

iQuanta data for MSG for the 12 months up to June 2008

Crime type	MSG position	1 <sup>st</sup> in MSG
<u>Vehicle crime</u>		
Ease of contact	3/8	Hertfordshire
Actions taken	6/8	Hertfordshire
Follow up	6/8	Hertfordshire
Treatment	5/8	Hertfordshire
OVERALL	6/8	Hertfordshire
<u>Burglary</u>		
Ease of contact	2/8	Hertfordshire
Actions taken	1/8	Hampshire
Follow up	2/8	Sussex
Treatment	2/8	Hertfordshire
OVERALL	3/8	Hertfordshire
<u>Violent crime</u>		
Ease of contact	1/8	Hampshire
Actions taken	3/8	Essex
Follow up	5/8	Hertfordshire
Treatment	2/8	Hertfordshire
OVERALL	2/8	Sussex
<u>RTC</u>		
Ease of contact	2/8	Hertfordshire
Actions taken	2/8	Hertfordshire
Follow up	2/8	Hertfordshire
Treatment	2/8	Hertfordshire
OVERALL	2/8	Hertfordshire
<u>All users (excluding racist incidents)</u>		
Ease of contact	2/8	Hertfordshire
Actions taken	3/8	Hertfordshire
Follow up	2/8	Hertfordshire
Treatment	2/8	Hertfordshire
OVERALL	2/8	Hertfordshire

## Victim Focus

### Summary results of Dip-sample Victim Code Compliance checks (latest month for available data followed by YTD)

% where victim was informed within 5 days of an investigation being closed

	Central	Isle of Wight	North & East	Portsmouth	Southampton	Western	Force
September 2008	75%	40%	95%	75%	40%	75%	67%
YTD	96%	88%	98%	93%	62%	93%	88%

% where the victim has been updated on a monthly basis (if applicable)

	Central	Isle of Wight	North & East	Portsmouth	Southampton	Western	Force
September 2008	100%	67%	89%	100%	100%	100%	93%
YTD	100%	79%	87%	74%	94%	92%	88%

% where the victim was notified upon filing (if applicable)

	Central	Isle of Wight	North & East	Portsmouth	Southampton	Western	Force
September 2008	100%	100%	90%	100%	100%	95%	98%
YTD	100%	94%	85%	96%	100%	92%	94%

### Victim support status for crimes

Month of Oct 2008	Central	Isle of Wight	North & East	Portsmouth	Southampton	Western	Force	Force %
Victim informed of VSS accepted	270	65	228	139	290	235	1227	8.80%
Victim informed of VSS declined	1878	532	1699	1261	1793	1545	8708	62.49%
VSS aware	109	9	35	19	22	42	236	1.69%
Victimless crime	646	206	635	606	662	604	3359	24.10%
Not stated	2	11	143	127	104	19	406	2.91%
Total crimes	2905	823	2740	2152	2871	2445	13936	N/A
% referred	13.05%	8.99%	9.60%	7.34%	10.87%	11.33%	10.50%	N/A

YTD to Oct 2008	Central	Isle of Wight	North & East	Portsmouth	Southampton	Western	Force	Force %
Victim informed of VSS accepted	1831	428	1419	984	2367	1758	8787	9.13%
Victim informed of VSS declined	12589	4354	11717	8692	12858	11243	61453	63.89%
VSS aware	482	65	314	173	175	276	1485	1.54%
Victimless crime	4544	1734	4375	4284	4325	3971	23233	24.15%
Not stated	7	66	356	590	189	27	1235	1.28%
Total crimes	19453	6647	18181	14723	19914	17275	96193	N/A
% referred	11.89%	7.42%	9.53%	7.86%	12.76%	11.77%	10.68%	N/A