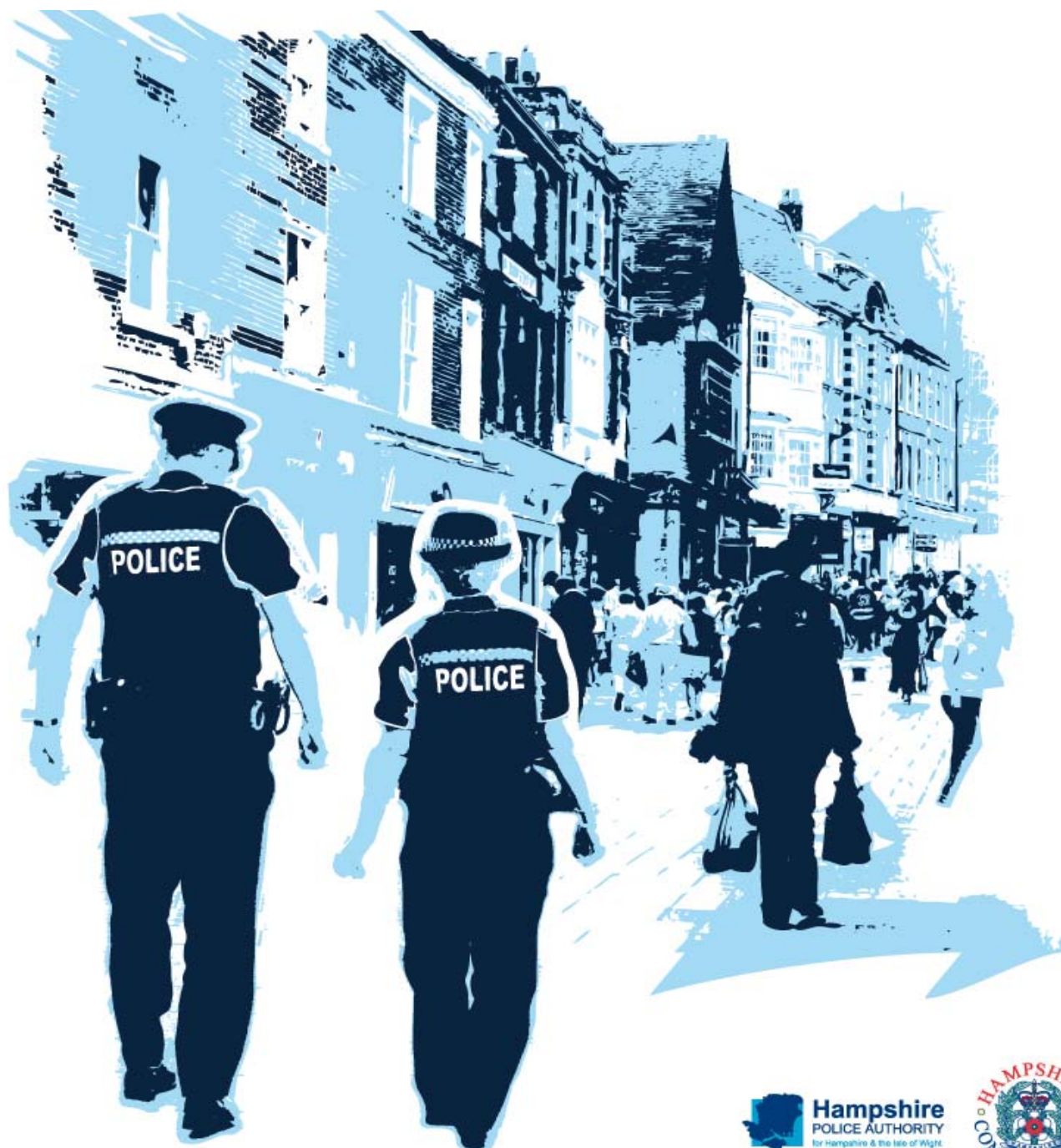


Performance Profile January 2011



Summary and index

Summary

2010/11 Reporting Year

This document contains a strategic overview of the Constabulary's performance. It has a variety of performance measures within it. The format of the profile has been aligned to the Policing Priorities identified by the Control Strategy. It provides information on our performance against Force targets, some of the APACS Indicators and the Policing Pledge. It also aims to provide supplementary information to assist in understanding reasons behind the performance in these areas. It has been designed as a headline document that will enable our customers, both internally and externally, to easily assess performance information for key domains. This year additional monitoring information within the six domains of the Policing Priorities will be published quarterly - a calendar of publication is located at the bottom of this page. If during a month an issue is identified which needs to be highlighted this will be done through 'exception reporting'.

A matrix can be found at the front of the profile which reflects our year to date performance against our targets.

Performance in key areas is then explored in more depth with an indication of where each measure has originated - for example, APACS Indicator or a Force Control Strategy (FCS) measure.

Where applicable, within the document, MSG (Most Similar Group) data is published along with the crime and detection data. MSGs are calculated by the Home Office based on a number of socio-demographic & geographic variables which are strongly linked to crime/incident levels and the fear of crime. These groups provide a benchmark for comparison of crime and detection rates. Below the applicable crime tables there are three rows relating to MSG data. The first provides the MSG position for the OCU/Force for that crime type. The second displays OCU Actual, this is the number of offences per 1,000 population. The third row shows the MSG Average which is the total number of offences per 1,000 population divided by the number within the MSG. The same three rows are provided in relation to detection data, where data is provided in % figures rather than per 1,000 population.

Please note: iQuanta data is provisional. Within the profile, Hampshire data is published and compared against the MSG average. The other forces within Hampshire's MSG are: Avon and Somerset, Bedfordshire, Essex Hertfordshire, Kent, Sussex and Thames Valley. We are unable to provide figures from iQuanta for these forces, due to the provisional nature of this data.

This document is then taken forward by key stakeholders within the organisation to the Force Performance Review Group, where it is used to highlight areas of good performance and those for development.

Crime OCU contribute to the following areas within this document, either via investigation, forensic support, and/or review of these crimes: homicide, serious violent, sexual and acquisitive crime, class A drug supply, drug seizures, domestic violence/hate crime, FIU form submissions, gun/knife crime (where this results in a major investigation/forensic support).

This is an evolving document and as such, the contents of which may alter over time and any feedback would be welcomed by the Performance Review Team.

Calendar of Quarterly Reporting

April - Catching criminals & managing offenders and Protecting our communities
May - Making the most of our resources and Equipping our team to deliver
June - Providing an excellent service and An active presence in every neighbourhood
July - Catching criminals & managing offenders and Protecting our communities
August - Making the most of our resources and Equipping our team to deliver
September - Providing an excellent service and An active presence in every neighbourhood
October - Catching criminals & managing offenders and Protecting our communities
November - Making the most of our resources and Equipping our team to deliver
December - Providing an excellent service and An active presence in every neighbourhood
January - Catching criminals & managing offenders and Protecting our communities
February - Making the most of our resources and Equipping our team to deliver
March - The year end profile will have all six domain areas included

MSG Colour Key

Force	OCU
1-2	1-4
3-4	5-8
5-6	9-12
7-8	13-15

Index

Page	FCS = Force Control Strategy		
Year to date performance matrix			
4			including notes on matrices terminology
Providing an excellent service			
5	National public confidence measure	APACS 2.2	FCS
5	Local confidence survey data		FCS
6	Overall satisfaction	APACS 1.1	FCS
6	Being kept informed		
6	Comparative satisfaction of minority ethnic groups	APACS 1.3	
6	Satisfaction of victims of racist incidents	APACS 1.2	
6	MSG user satisfaction data		
An active presence in every neighbourhood			
7	Rowdy and nuisance behaviour		FCS
8	Criminal damage		FCS
Catching criminals and managing offenders			
9	Serious acquisitive crime	APACS 5.2	FCS
10	Breakdown: Robbery, dwelling burglary, vehicle crime		
10	Breakdown: Theft of a motor vehicle, theft from a motor vehicle		
10	Organised crime groups		FCS
Protecting our communities			
11	Violence against the person with injury		FCS
12	Serious violent crime	APACS 5.1	
13	Assault with less serious injury	APACS 5.3	
14	Reduction in dwelling burglary		FCS
Making the most of our resources			
15	BME recruitment		FCS
15	Minority ethnic officer recruitment	APACS 3.1	
15	Minority ethnic police staff recruitment		
15	Female officer representation	APACS 3.2	
Equipping our team to deliver			
15	Staff confidence in the organisation		FCS
Monitoring information for Catching criminals and managing offenders			
16	Serious sexual offences - detections		
16	Class A drugs sanction detections		
16	Drug seizures information		
16	First time entrants to the criminal justice system		
16	Arrest and disposal information		
16	Percentage bailed on first submission		
17	Forensic results for vehicle crime		
17	Outstanding suspects		
Monitoring information for Protecting our communities			
18	All crime		
19	Non-dwelling burglary		
20	Prolific and other priority offenders (PPOs) convictions		
20	FIU1 submissions		
20	MAPPA Visits		
20	Perception of local drug use		
21	Gun crime	APACS 5.5	
21	Knife crime	APACS 5.6	
21	Murder offences	APACS 5.4	
21	Actual cash seizure value		
22	Missing persons		
22	Domestic Crimes and Incidents		
22	Hate Crimes		
23	Casualty reduction		

Year to date performance targets matrix

	Target	Actual	Central	Isle of Wight	North & East	Portsmouth	Southampton	Western
Providing an excellent service								
Confidence in local police	55.3%	51.0%	This is a Force measure					
Local confidence measure (latest quarter)	87.3%	77.0%	77.0%	78.0%	79.0%	77.0%	76.0%	78.0%
Overall satisfaction (data for rolling 12 months)	68.0%	68.0%	68.0%	70.0%	68.0%	68.0%	65.0%	72.0%
An active presence in every neighbourhood								
Rowdy & nuisance behaviour (inc vehicle nuisance)	<58137	51688	8753	3540	9846	8460	12565	8524
	OCU specific targets		11517	3815	10741	9077	13003	9984
Reduce criminal damage	<22985	20479	4254	1835	3861	2752	4134	3643
	OCU specific targets		4982	1694	4494	2968	4717	4130
Catching criminals & managing offenders								
Serious acquisitive crime SD	>15%	13.0%	14.5%	15.5%	16.4%	10.3%	11.2%	12.7%
Organised crime group (OCG) - disruptions	>40%	110%	Owned by Crime OCU					
Protecting our communities								
Reduce violence against the person with injury	<12015	11970	2413	1069	1816	2194	2706	1772
	OCU specific targets		2440	821	1981	2146	2797	1830
Reduction in dwelling burglary	<4477	4341	683	259	787	806	1183	623
	OCU specific targets		879	214	942	823	851	767
Making the most of our resources								
BME recruitment	>5%	6.6%	This is a Force measure					
Equipping our staff to deliver								
Staff confidence in the organisation	61%	data unavailable	This is a Force measure					
Force Total - targets achieved		7	5	3	6	4	3	5

Notes to be read in conjunction with matrices

All citizen focus data
SD
BME
OCU specific targets

Based on "completely or very satisfied"
Sanction detections
Black and minority ethnic
OCU specific targets are rounded to 0 decimal places; the actual figure may therefore seem the same but appear amber due to this rounding

Force target areas for providing an excellent service

	Target	Actual	Central	Isle of Wight	North & East	Portsmouth	Southampton	Western
Confidence in local police (latest data)	55.3%	51.0%	This is a Force measure					
Local Confidence Measure (latest data)	87.3%	77.0%	77.0%	78.0%	79.0%	77.0%	76.0%	78.0%
Overall satisfaction (rolling 12 months)	68.0%	68.0%	68.0%	70.0%	68.0%	68.0%	65.0%	72.0%

National Public Confidence Measure

APACS 2.2 Force Target

This data is based on 'The police and local council are dealing with the anti-social behaviour and crime issues that matter in this area'
The Home Office has set a target to achieve a 12% improvement by 2012 against the baseline of 47.3%. Hampshire aimed to improve by 4% each year, as this is the second year, our target this year is an 8% improvement on baseline which equates to 55.3%

Sep-10	
Hampshire	51.0%
MSG Position	4 of 8
MSG average	50.9%

This data is based on 'The percentage who perceive that people using or dealing drugs are a problem in their local area'

Local Confidence Survey Data

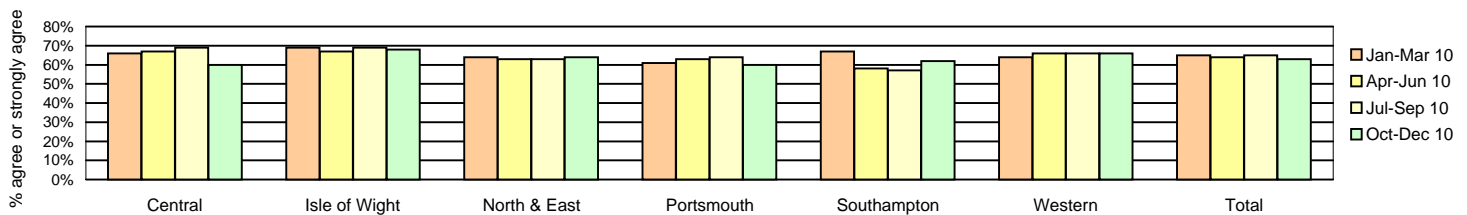
Figures relate to the percentage of respondents who agree or strongly agree with the question. Hampshire's local surveys have a confidence level of +/-4%. This means that changes of less than 4% may not reflect a real change in performance.

The police and local council are dealing with the anti-social behaviour and crime issues that matter in this area

This question is no longer asked as it has ceased to be a Home Office target. It has therefore been removed from the profile.

The police are dealing with the things that matter locally

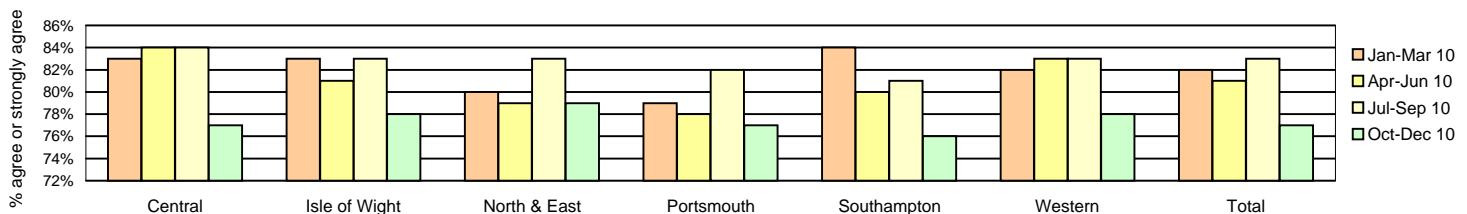
	Central	Isle of Wight	North & East	Portsmouth	Southampton	Western	Total	No. Surveys
January - March 2010	66%	69%	64%	61%	67%	64%	65%	3708
April - June 2010	67%	67%	63%	63%	58%	66%	64%	3612
July - September 2010	69%	69%	63%	64%	57%	66%	65%	3620
October - December 2010	60%	68%	64%	60%	62%	66%	63%	3609



Taking everything into account, I have confidence in the Police in this area

Force Target

	Central	Isle of Wight	North & East	Portsmouth	Southampton	Western	Total	No. Surveys
January - March 2010	83%	83%	80%	79%	84%	82%	82%	3708
April - June 2010	84%	81%	79%	78%	80%	83%	81%	3612
July - September 2010	84%	83%	83%	82%	81%	83%	83%	3620
October - December 2010	77%	78%	79%	77%	76%	78%	77%	3609



Force target areas for providing an excellent service

Overall satisfaction (user satisfaction survey results)

APACS 1.1 Force Target

Rolling 12 months data relates to: Feb 10 - Jan 11; rolling 3 months data relates to Nov 10 - Jan 11

Overall satisfaction includes burglary, vehicle crime, violent crime and minor injury RTCs for % completely or very satisfied

Target 68%	Central	Isle of Wight	North & East	Portsmouth	Southampton	Western	Force	No. Surveys
Rolling 12 months	68%	70%	68%	68%	65%	72%	68%	7638
Rolling 3 months	64%	75%	66%	69%	65%	74%	68%	2023

Being kept informed (user satisfaction survey results)

Rolling 12 months data relates to: Feb 10 - Jan 11; rolling 3 months data relates to Nov 10 - Jan 11

Being kept informed includes burglary, vehicle crime, violent crime and minor injury RTCs for % completely or very satisfied

	Central	Isle of Wight	North & East	Portsmouth	Southampton	Western	Force	No. Surveys
Rolling 12 months	57%	59%	57%	58%	54%	61%	58%	7470
Rolling 3 months	51%	59%	53%	58%	47%	59%	54%	1997

Comparative satisfaction of minority ethnic groups

APACS 1.3

Data relates to interviews which took place Feb 10 - Jan 11

These figures are for overall satisfaction for burglary, vehicle crime, violent crime, minor injury RTCs and racist incidents

	Completely and very satisfied	Completely, very and fairly satisfied	No. Surveys
White	68.8%	85.0%	6682
Minority Ethnic	55.9%	78.1%	424
Satisfaction Gap	12.9%	6.9%	

Satisfaction of victims of racist incidents

APACS 1.2

These figures relate to interviews which took place Jan 10 - Dec 10; these will be updated quarterly

Racist incident overall satisfaction = % completely or very satisfied

	Central	Isle of Wight	North & East	Portsmouth	Southampton	Western	Force
Percentage	65%	100%	59%	67%	70%	63%	67%
Number of surveys	31	8	27	46	56	27	195

MSG information for user satisfaction

iQuanta data for MSG for the 12 months ending September 2010 (iQuanta calculate satisfaction % based on those responding that they are completely, very or fairly satisfied)

	Previous MSG position	Current MSG position	Change		Previous MSG position	Current MSG position	Change
Vehicle crime				Burglary			
Ease of contact	4/8	1/8	↑	Ease of contact	3/8	3/8	↔
Actions taken	4/8	4/8	↔	Actions taken	5/8	5/8	↔
Follow up	4/8	4/8	↔	Follow up	1/8	1/8	↔
Treatment	5/8	4/8	↑	Treatment	6/8	6/8	↔
Whole Experience	4/8	4/8	↔	Whole Experience	3/8	4/8	↓
Violent crime				RTC (minor injury)			
Ease of contact	5/8	4/8	↑	Ease of contact	1/8	1/8	↔
Actions taken	4/8	3/8	↑	Actions taken	2/8	2/8	↔
Follow up	6/8	6/8	↔	Follow up	1/8	1/8	↔
Treatment	6/8	6/8	↔	Treatment	2/8	2/8	↔
Whole Experience	4/8	6/8	↓	Whole Experience	3/8	3/8	↔
All users (excluding racist incidents)							
Ease of contact	1/8	1/8	↔				
Actions taken	2/8	2/8	↔				
Follow up	1/8	1/8	↔				
Treatment	5/8	4/8	↑				
Whole Experience	3/8	3/8	↔				

Force target areas for an active presence in every neighbourhood

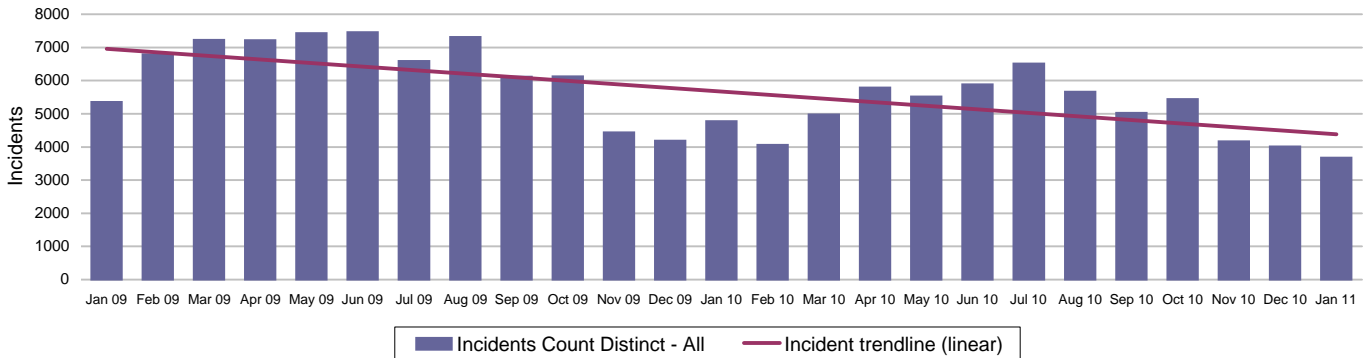
	Target	Actual	Central	Isle of Wight	North & East	Portsmouth	Southampton	Western
Rowdy & nuisance behaviour (inc Vehicle Nuisance)	58137	51688	8753	3540	9846	8460	12565	8524
	OCU specific targets		11517	3815	10741	9077	13003	9984
Reduce criminal damage	22985	20479	4254	1835	3861	2752	4134	3643
	OCU specific targets		4982	1694	4494	2968	4717	4130

Rowdy & nuisance behaviour (including vehicle)

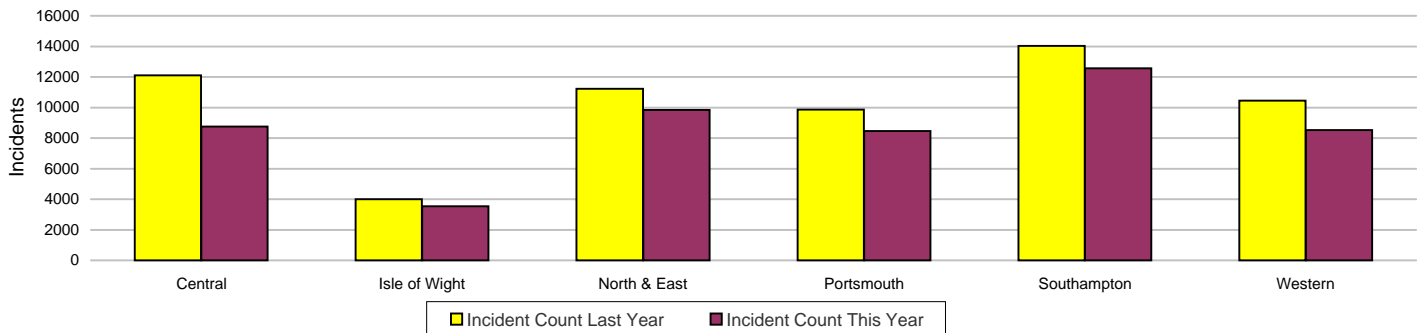
Force Target

In 2009-2010 Rowdy and Nuisance included Inappropriate use of Fireworks, Rowdy & Inconsiderate, Substance Misuse and Street Drinking, with Vehicle Related Nuisance being a separate entity for monitoring purposes however the decision this year has been to bring all key nuisance elements into one section. This data is sourced from RMS and does not reflect the complete NSIR return for Hampshire.

This target is based on a subset of the anti-social behaviour categories, it does not cover all aspects of anti-social behaviour.



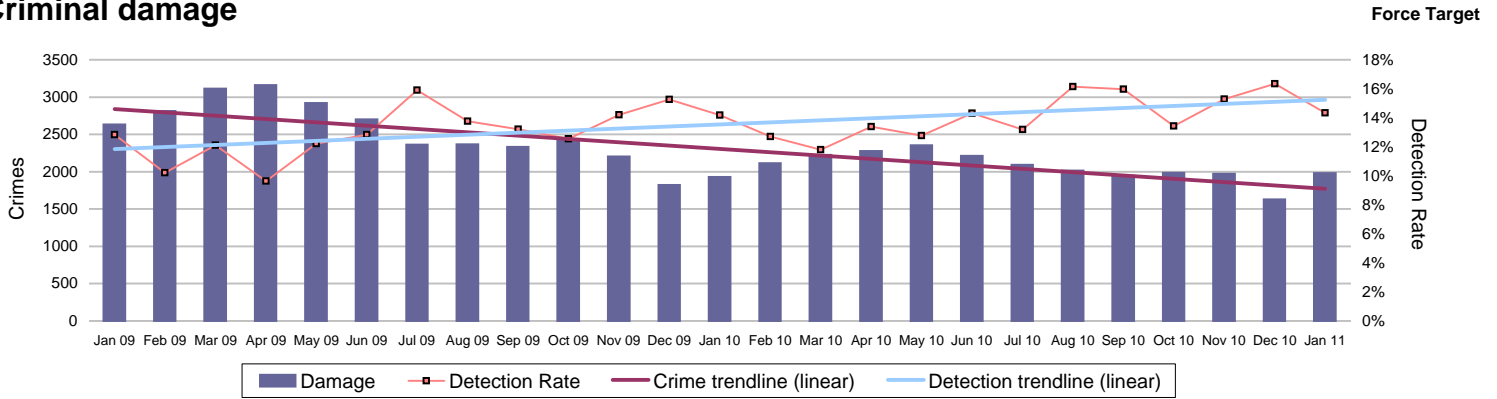
Incidents	Central	Isle of Wight	North & East	Portsmouth	Southampton	Western	Force
YTD Incidents	8753	3540	9846	8460	12565	8524	51688
YTD Target	11517	3815	10741	9077	13003	9984	58137
YTD 09/10 Incidents	12096	3996	11233	9857	14024	10459	61665
This month	506	244	734	592	1023	579	3678
% change from 09/10	-27.64%	-11.41%	-12.35%	-14.17%	-10.40%	-18.50%	-16.18%



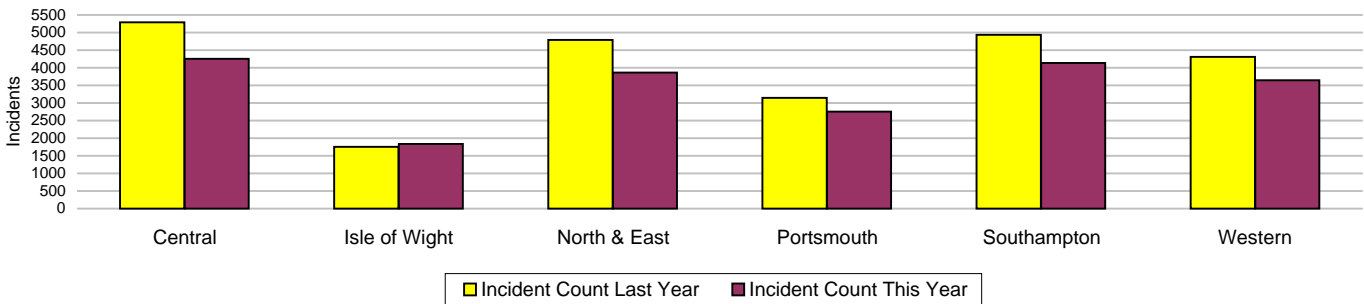
Note: MSG data is always published a month in arrears.
For an explanation of this data, refer to the Summary on page 2

Force target areas for an active presence in every neighbourhood

Criminal damage



Crimes	Central	Isle of Wight	North & East	Portsmouth	Southampton	Western	Force
YTD Crimes	4254	1835	3861	2752	4134	3643	20479
YTD Target	4982	1694	4494	2968	4717	4130	22985
YTD 09/10 Crimes	5291	1759	4794	3146	4934	4306	24230
This month	453	154	343	264	383	384	1981
% change from 09/10	-19.60%	4.32%	-19.46%	-12.52%	-16.21%	-15.40%	-15.48%
MSG position	8 of 15	15 of 15	11 of 15	11 of 15	13 of 15	6 of 15	7 of 8
MSG actual	2.495	3.466	2.503	3.700	4.762	2.484	2.985
MSG average	2.506	2.928	2.421	3.515	3.839	2.499	2.772



Detections	Central	Isle of Wight	North & East	Portsmouth	Southampton	Western	Force
YTD Detection Rate	14.29%	16.78%	14.04%	16.21%	13.62%	13.40%	14.43%
This month	16.78%	12.34%	12.24%	20.45%	10.70%	13.54%	14.34%
YTD 09/10 Detections	13.21%	15.97%	13.10%	13.64%	12.22%	12.73%	13.16%
MSG position	9 of 15	5 of 15	9 of 15	2 of 15	7 of 15	8 of 15	6 of 8
MSG actual	13.00%	17.15%	13.30%	15.92%	13.93%	13.00%	14.00%
MSG average	13.32%	14.70%	13.79%	13.32%	14.30%	13.27%	14.22%

Note: Detections refer to Sanction Detections ONLY



Note: MSG data is always published a month in arrears.
For an explanation of this data, refer to the Summary on page 2

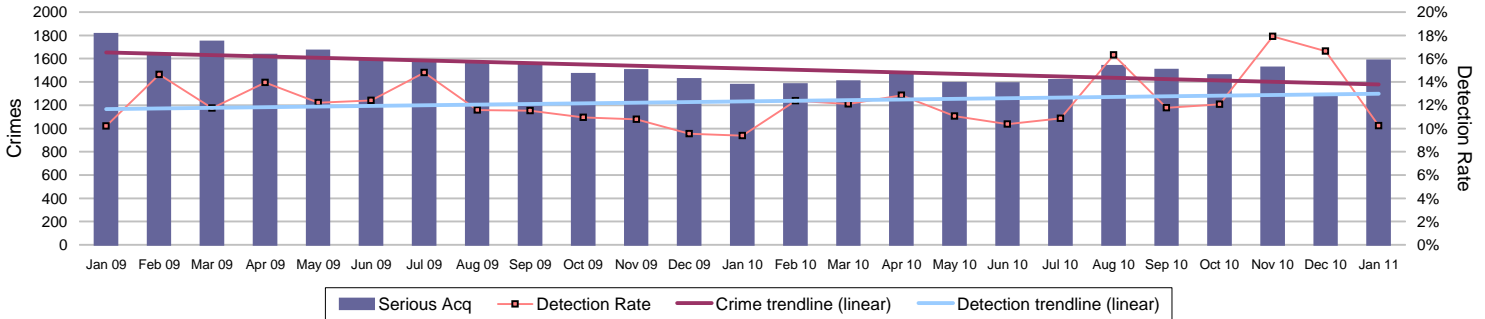
Force target areas for catching criminals and managing offenders

	Target	Actual	Central	Isle of Wight	North & East	Portsmouth	Southampton	Western
Serious acquisitive detection rate	15%	13.0%	14.5%	15.5%	16.4%	10.3%	11.2%	12.7%
OCG disruptions	40%	110%	Owned by Crime OCU					

Serious acquisitive crime

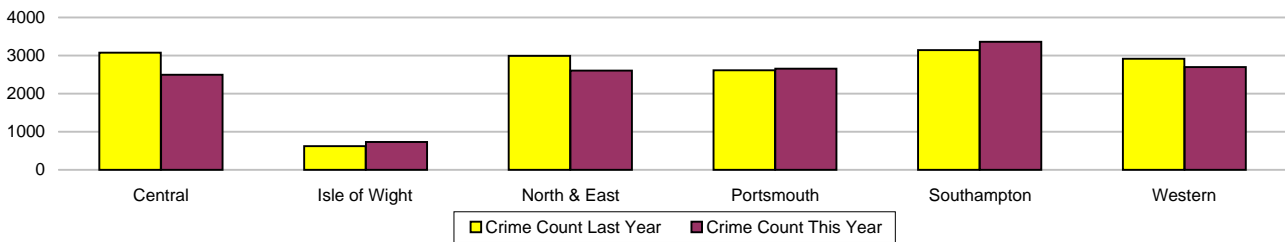
APACS 5.2 Force Target

Serious acquisitive crime consists of crimsec codes 28, 29, 34A, 34B, 37/2, 45 and 48



Crimes

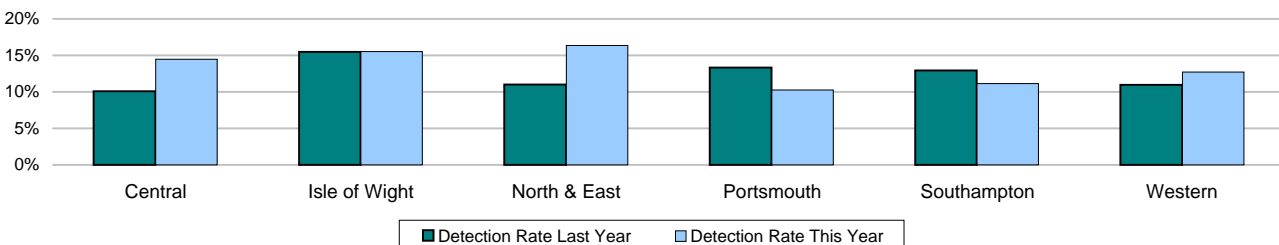
	Central	Isle of Wight	North & East	Portsmouth	Southampton	Western	Force
YTD Crimes	2494	734	2602	2658	3362	2701	14551
YTD 09/10 Crimes	3077	626	2992	2614	3143	2914	15366
This month	219	69	302	336	364	294	1584
% change from 09/10	-18.95%	17.25%	-13.03%	1.68%	6.97%	-7.31%	-5.30%
MSG actual	2 of 15	5 of 15	4 of 15	4 of 15	11 of 15	12 of 15	2 of 8
MSG average	1.431	1.533	1.686	3.563	4.639	2.26	2.267
MSG average	2.138	1.986	2.074	4.362	4.05	1.865	2.709



Detections

	Central	Isle of Wight	North & East	Portsmouth	Southampton	Western	Force
Target >15%							
YTD Detection Rate	14.47%	15.53%	16.37%	10.27%	11.15%	12.70%	13.00%
This month	6.39%	11.59%	14.57%	10.12%	7.97%	11.22%	10.23%
YTD 09/10 Detections	10.07%	15.50%	11.03%	13.31%	12.92%	10.98%	11.79%
MSG position	12 of 15	11 of 15	8 of 15	12 of 15	12 of 15	13 of 15	4 of 8
MSG actual	13.37%	15.35%	14.53%	10.86%	11.85%	12.74%	12.77%
MSG average	14.50%	17.60%	13.47%	13.36%	15.59%	14.46%	13.57%

Note: Detections refer to Sanction Detections ONLY



Force target areas for catching criminals and managing offenders

Serious acquisitive crime breakdown

Robbery

Year to date	Central	Isle of Wight	North & East	Portsmouth	Southampton	Western	Force
Crimes	77	23	158	216	353	84	911
09/10 crimes	84	17	145	191	336	108	881
% change from 09/10	-8.33%	35.29%	8.97%	13.09%	5.06%	-22.22%	3.41%
MSG position	7 of 15	4 of 15	11 of 15	7 of 15	13 of 15	7 of 15	3 of 8
Detection rate	28.57%	39.13%	18.99%	17.13%	21.25%	25.00%	21.30%
MSG position	6 of 15	3 of 15	13 of 15	14 of 15	11 of 15	12 of 15	5 of 8
Jan 2011	Central	Isle of Wight	North & East	Portsmouth	Southampton	Western	Force
Crimes	5	1	8	16	38	6	74
Detection rate	0.00%	0.00%	0.00%	25.00%	10.53%	16.67%	12.16%

Dwelling burglary

Year to date	Central	Isle of Wight	North & East	Portsmouth	Southampton	Western	Force
Crimes	683	259	787	806	1183	623	4341
09/10 crimes	931	217	963	808	908	766	4593
% change from 09/10	-26.64%	19.35%	-18.28%	-0.25%	30.29%	-18.67%	-5.49%
MSG position	2 of 15	6 of 15	5 of 15	3 of 15	11 of 15	4 of 15	3 of 8
Detection rate	19.77%	12.36%	15.12%	11.91%	15.89%	17.98%	15.71%
MSG position	10 of 15	15 of 15	14 of 15	11 of 15	10 of 15	5 of 15	4 of 8
Jan 2011	Central	Isle of Wight	North & East	Portsmouth	Southampton	Western	Force
Crimes	69	35	110	117	153	75	559
Detection rate	8.70%	5.71%	23.64%	7.69%	7.84%	6.67%	10.73%

Vehicle crime

Year to date	Central	Isle of Wight	North & East	Portsmouth	Southampton	Western	Force
Crimes	1734	452	1657	1636	1826	1994	9299
09/10 crimes	2062	392	1884	1615	1899	2040	9892
% change from 09/10	-15.91%	15.31%	-12.05%	1.30%	-3.84%	-2.25%	-5.99%
MSG position	6 of 15	4 of 15	5 of 15	8 of 15	10 of 15	14 of 15	2 of 8
Detection rate	11.76%	16.15%	16.72%	8.56%	6.13%	10.53%	10.93%
MSG position	8 of 15	9 of 15	3 of 15	10 of 15	13 of 15	13 of 15	4 of 8
Jan 2011	Central	Isle of Wight	North & East	Portsmouth	Southampton	Western	Force
Crimes	145	33	184	203	173	213	951
Detection rate	5.52%	18.18%	9.78%	10.34%	7.51%	12.68%	9.78%
Detection numbers	8	6	18	21	13	27	93

Theft of a motor vehicle

Year to date	Central	Isle of Wight	North & East	Portsmouth	Southampton	Western	Force
Crimes	342	110	418	241	451	328	1890
MSG position	4 of 15	2 of 15	9 of 15	1 of 15	12 of 15	6 of 15	1 of 8
Detection rate	19.01%	33.64%	24.40%	13.69%	9.53%	21.95%	18.62%
MSG position	10 of 15	3 of 15	2 of 15	7 of 15	13 of 15	8 of 15	4 of 8
Jan 2011	Central	Isle of Wight	North & East	Portsmouth	Southampton	Western	Force
Crimes	27	11	51	40	42	37	208
Detection rate	22.22%	45.45%	29.41%	7.50%	4.76%	27.03%	19.71%
Detection numbers	6	5	15	3	2	10	41

Theft from a motor vehicle

Year to date	Central	Isle of Wight	North & East	Portsmouth	Southampton	Western	Force
Crimes	1392	342	1239	1395	1375	1666	7409
MSG position	8 of 15	6 of 15	4 of 15	11 of 15	9 of 15	15 of 15	5 of 8
Detection rate	9.99%	10.53%	14.12%	7.67%	5.02%	8.28%	8.96%
MSG position	9 of 15	8 of 15	3 of 15	9 of 15	12 of 15	12 of 15	4 of 8
Jan 2011	Central	Isle of Wight	North & East	Portsmouth	Southampton	Western	Force
Crimes	118	22	133	163	131	176	743
Detection rate	1.69%	4.55%	2.26%	11.04%	8.40%	9.66%	7.00%
Detection numbers	2	1	3	18	11	17	52

Robbery, dwelling burglary and vehicle crime are the component parts of serious acquisitive crime. These individual crime types do not have targets.

Number of Organised Crime Groups (OCGs) disrupted

Force Target

The Force target for 2010/11 is to dismantle or disrupt at least 40% of identified organised crime groups as a result of police or multi agency activity.

YTD Jan 2011	2009/2010	2010/2011	Disrupted against identified
Number of OCGs identified and mapped	45	10	
Number of OCGs disrupted or partially disrupted through Crime OCU activity	32	11	110%

Note: MSG data is always published a month in arrears.
For an explanation of this data, refer to the Summary on page 2

Force target areas for catching criminals and managing offenders

Number of OCGs subject to tactical activity	101	82	
---	-----	----	--

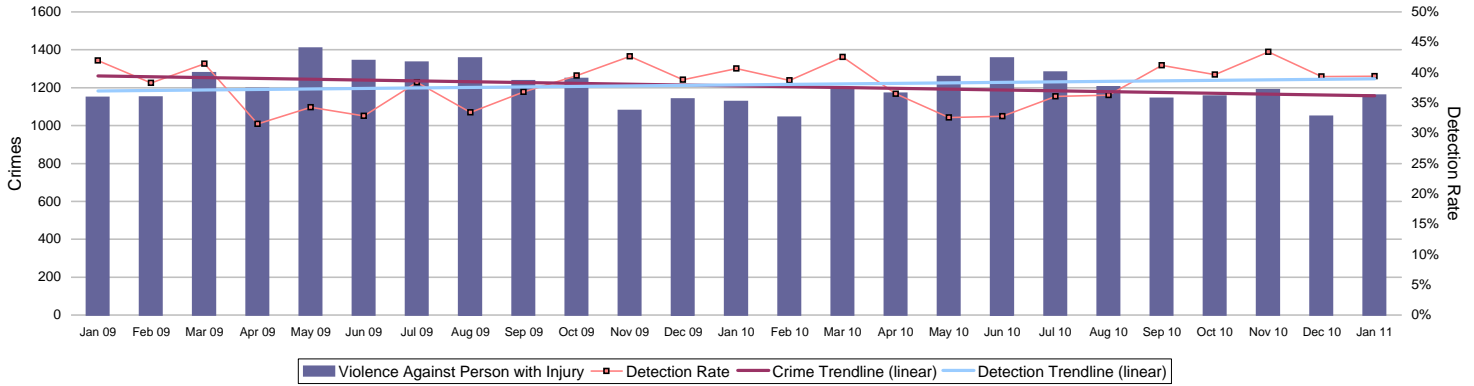
Force target areas for protecting our communities

	Target	Actual	Central	Isle of Wight	North & East	Portsmouth	Southampton	Western
Reduction of VAP with injury	12015	11970	2413	1069	1816	2194	2706	1772
	OCU specific targets		2440	821	1981	2146	2797	1830
Reduction in dwelling burglary	4477	4341	683	259	787	806	1183	623
	OCU specific targets		879	214	942	823	851	767

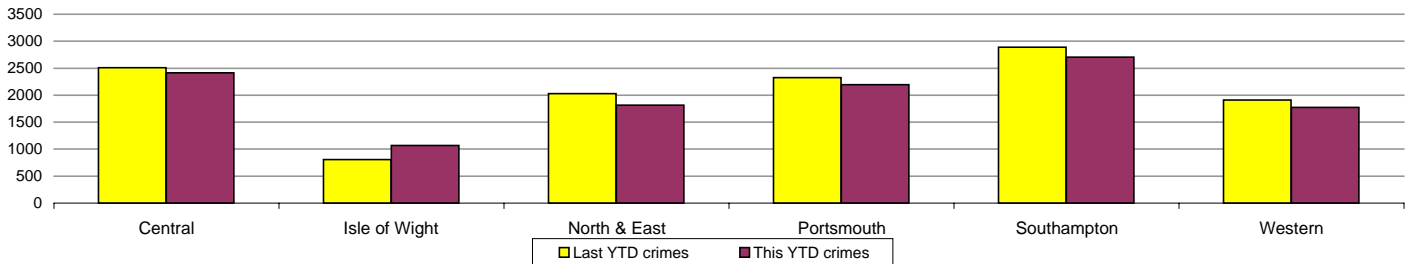
Violence against the person (VAP) with injury

VAP with injury crimsec codes 1, 2, 4.1-4.4, 4.6-4.10, 5A, 5B, 5C, 8F, 8G, 8H, 8J, 8K and 37.1

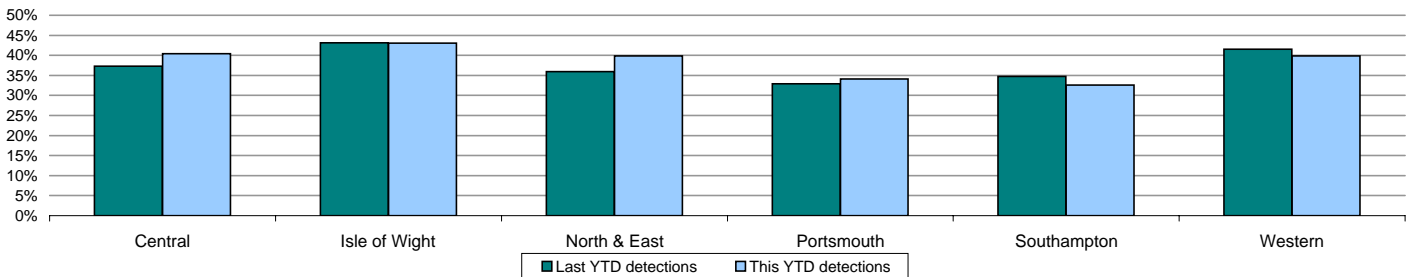
Force Target



Crimes	Central	Isle of Wight	North & East	Portsmouth	Southampton	Western	Force
YTD Crimes	2413	1069	1816	2194	2706	1772	11970
YTD Target	2440	821	1981	2146	2797	1830	12015
YTD 09/10 Crimes	2511	809	2029	2328	2887	1908	12472
This month	217	109	154	194	280	206	1160
% change from 09/10	-3.90%	32.14%	-10.50%	-5.76%	-6.27%	-7.13%	-4.03%
MSG position	15 of 15	14 of 15	8 of 15	14 of 15	15 of 15	10 of 15	8 of 8
MSG actual	1.510	1.997	1.119	3.263	3.482	1.174	1.822
MSG average	1.169	1.517	1.084	2.034	2.200	1.136	1.378



Detections	Central	Isle of Wight	North & East	Portsmouth	Southampton	Western	Force
YTD Detection Rate	40.41%	43.03%	39.87%	34.14%	32.59%	39.84%	37.56%
This month	45.16%	46.79%	44.81%	40.72%	30.36%	36.41%	39.40%
YTD 09/10 Detections	37.28%	43.14%	35.98%	32.95%	34.71%	41.51%	36.69%
MSG position	12 of 15	7 of 15	11 of 15	10 of 15	13 of 15	9 of 15	6 of 8
MSG actual	39.17%	43.28%	40.59%	34.86%	33.66%	41.63%	38.03%
MSG average	42.23%	43.44%	42.92%	38.53%	40.38%	42.68%	41.93%

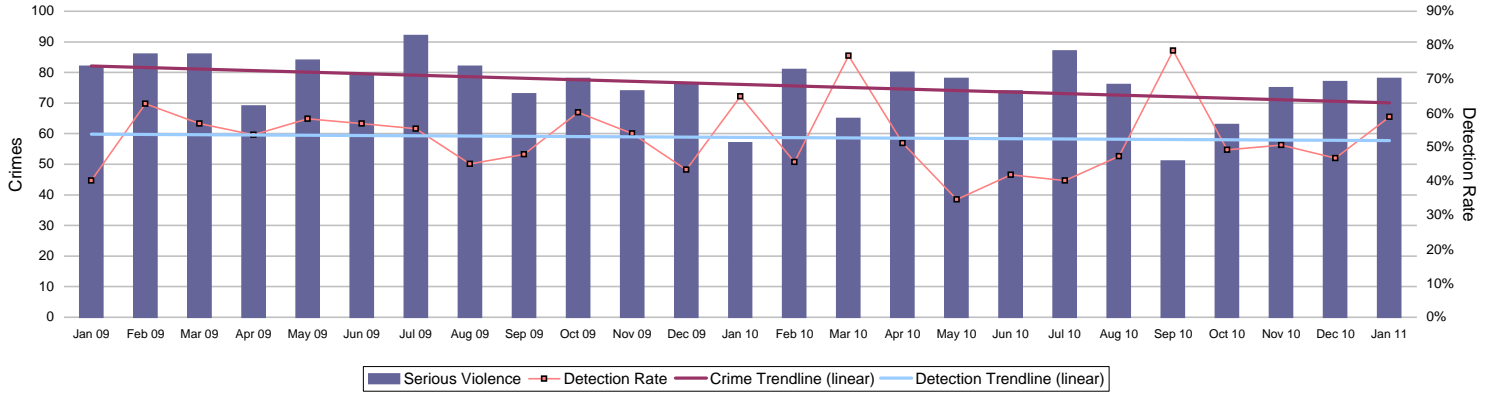


Force target areas for protecting our communities

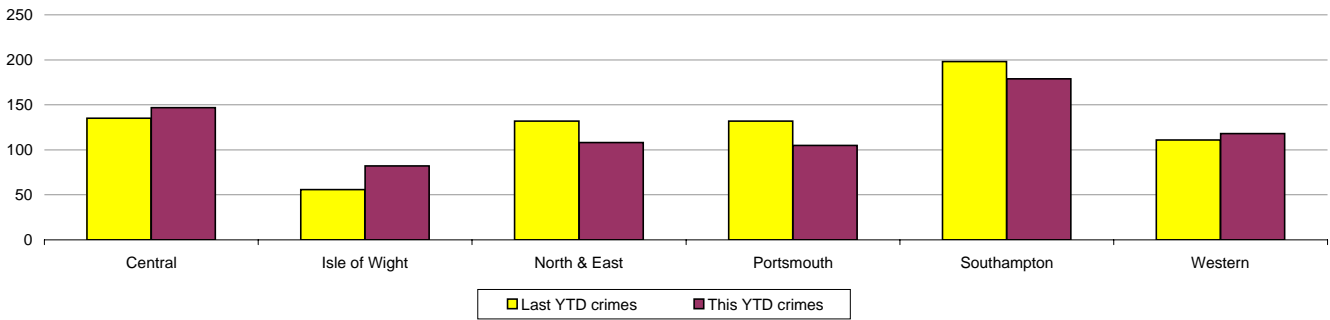
Serious violent crime

APACS 5.1

Serious violent crime consists of crimsec codes 1, 2, 4.1-4.4, 4.6, 4.8, 5A, 5B, 5C, 8F, 8H and 37.1

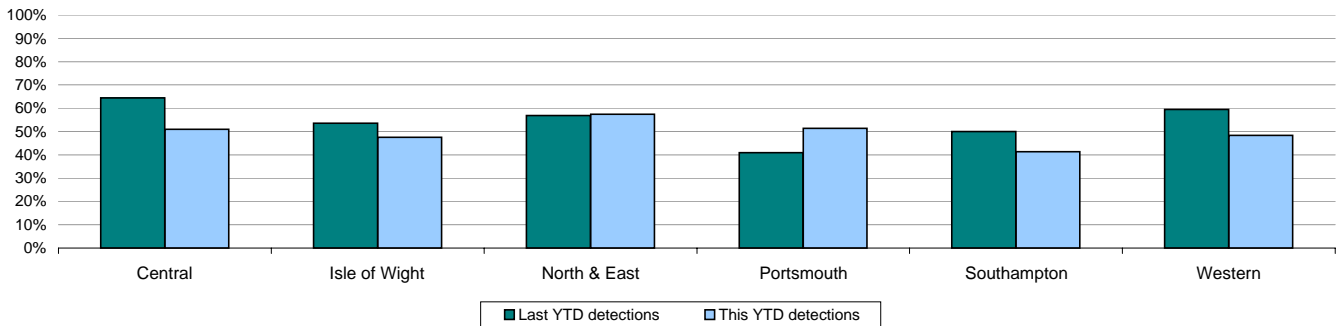


Crimes	Central	Isle of Wight	North & East	Portsmouth	Southampton	Western	Force
YTD Crimes	147	82	108	105	179	118	739
YTD 09/10 Crimes	135	56	132	132	198	111	764
This month	18	9	9	10	20	12	78
% change from 09/10	8.89%	46.43%	-18.18%	-20.45%	-9.60%	6.31%	-3.27%
MSG position	13 of 15	14 of 15	5 of 15	8 of 15	12 of 15	7 of 15	7 of 8
MSG actual	0.102	0.171	0.057	0.177	0.275	0.068	0.119
MSG average	0.093	0.118	0.078	0.200	0.211	0.074	0.096



Detections	Central	Isle of Wight	North & East	Portsmouth	Southampton	Western	Force
YTD Detection Rate	51.02%	47.56%	57.41%	51.43%	41.34%	48.31%	48.85%
This month	33.33%	33.33%	88.89%	80.00%	45.00%	100.00%	58.97%
YTD 09/10 Detections	64.44%	53.57%	56.82%	40.91%	50.00%	59.46%	53.80%
MSG position	11 of 15	10 of 15	7 of 15	5 of 15	12 of 15	14 of 15	5 of 8
MSG actual	53.29%	48.89%	55.30%	50.00%	43.96%	48.25%	49.60%
MSG average	59.32%	53.69%	57.02%	48.65%	52.03%	62.04%	50.40%

Note: Detections refer to Sanction Detections ONLY

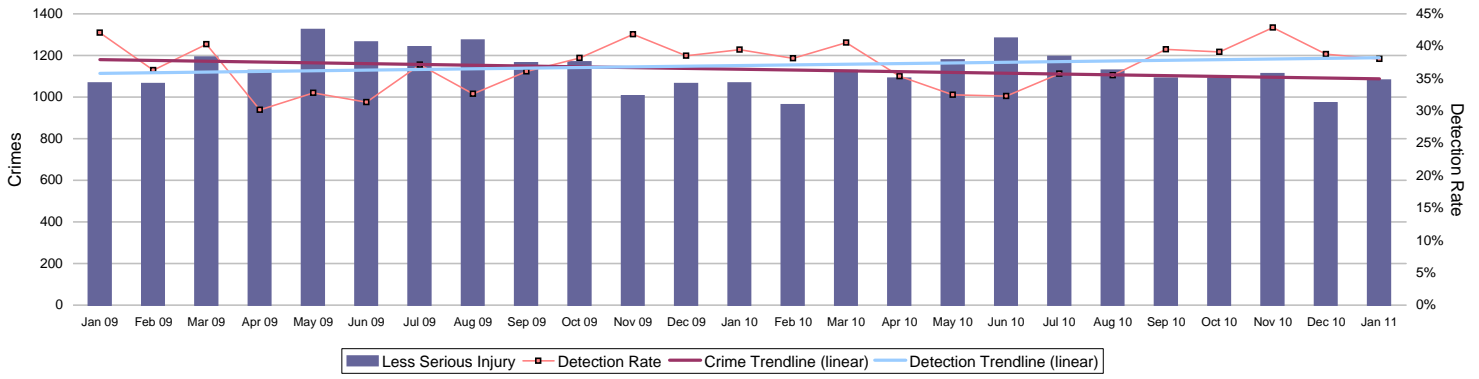


Force target areas for protecting our communities

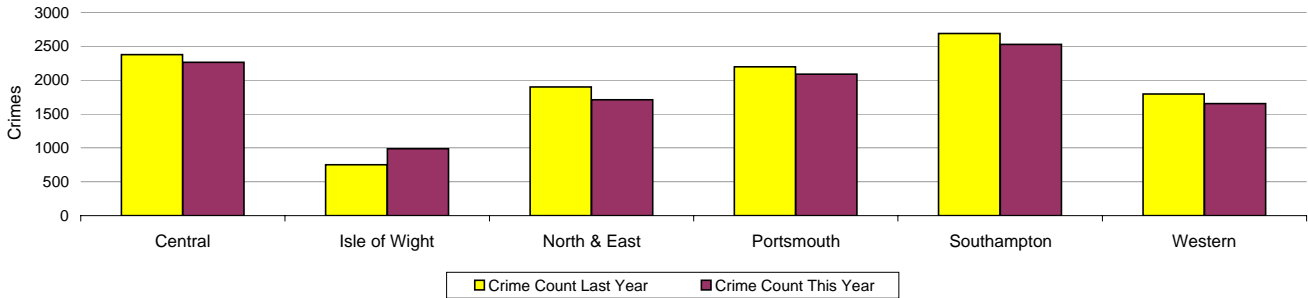
Assault with less serious injury

APACS 5.3

Assault with less serious injury consists of crimsec codes 8G and 8J

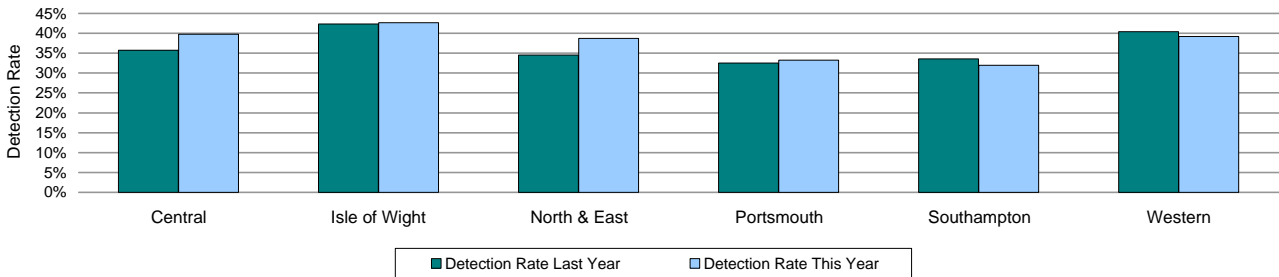


Crimes	Central	Isle of Wight	North & East	Portsmouth	Southampton	Western	Force
YTD Crimes	2264	987	1708	2088	2527	1652	11226
YTD 09/10 Crimes	2375	753	1897	2195	2687	1795	11702
This month	199	100	145	184	260	193	1081
% change from 09/10	-4.67%	31.08%	-9.96%	-4.87%	-5.95%	-7.97%	-4.07%
MSG position	15 of 15	14 of 15	9 of 15	14 of 15	15 of 15	11 of 15	8 of 8
MSG actual	1.408	1.826	1.062	3.086	3.207	1.103	1.702
MSG average	1.076	1.400	1.006	1.833	1.988	1.062	1.281



Detections	Central	Isle of Wight	North & East	Portsmouth	Southampton	Western	Force
YTD Detection Rate	39.75%	42.65%	38.76%	33.29%	31.97%	39.23%	36.83%
This month	46.23%	48.00%	42.07%	38.59%	29.23%	32.64%	38.02%
YTD 09/10 Detections	35.75%	42.36%	34.53%	32.48%	33.61%	40.45%	35.59%
MSG position	11 of 15	7 of 15	11 of 15	10 of 15	12 of 15	9 of 15	7 of 8
MSG actual	38.32%	42.82%	39.64%	34.08%	32.95%	41.13%	37.28%
MSG average	41.15%	42.63%	42.10%	37.46%	39.19%	41.51%	41.35%

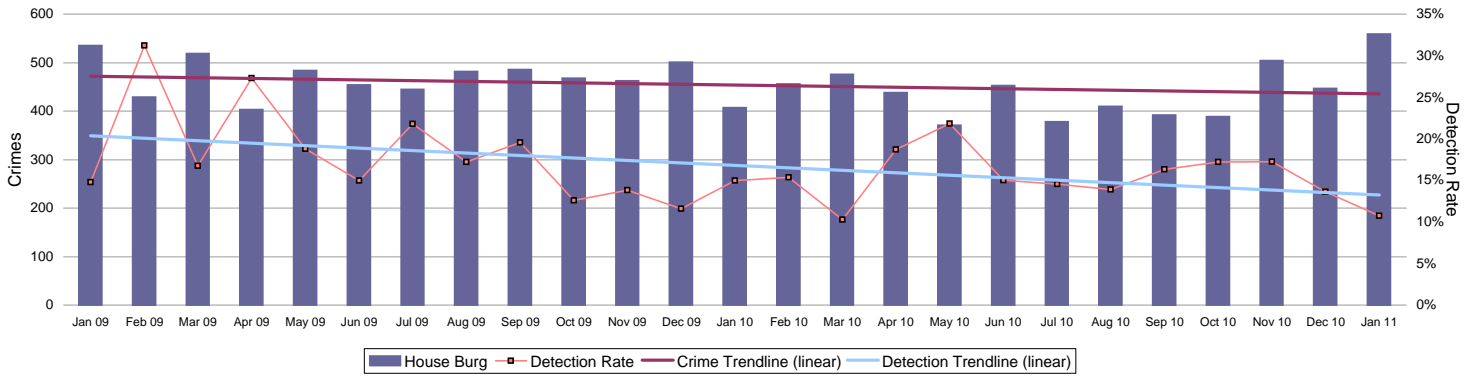
Note: Detections refer to Sanction Detections ONLY



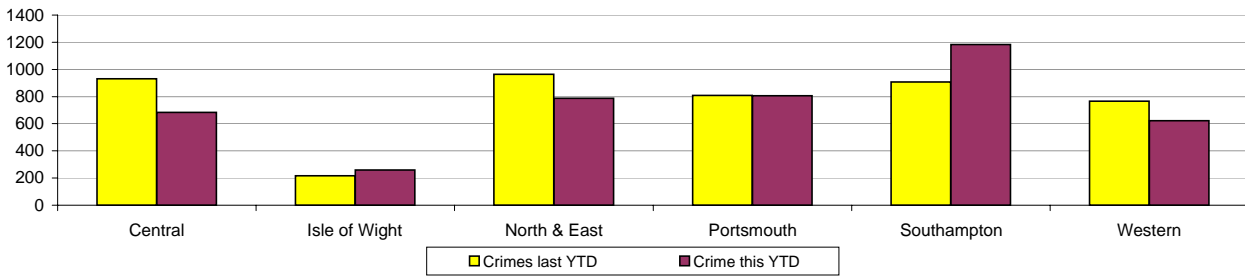
Force target areas for protecting our communities

Reduction in Dwelling Burglary

Force Target

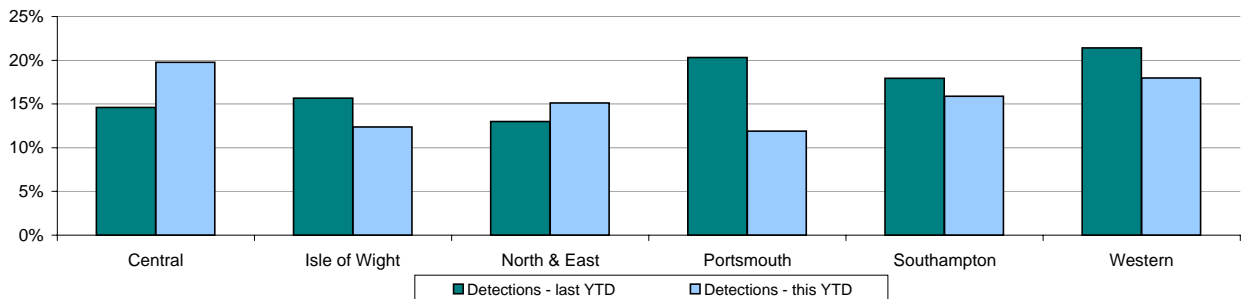


Crimes	Central	Isle of Wight	North & East	Portsmouth	Southampton	Western	Force
YTD Crimes	683	259	787	806	1183	623	4341
YTD Target	879	214	942	823	851	767	4477
YTD 09/10 Crimes	931	217	963	808	908	766	4593
This month	69	35	110	117	153	75	559
% change from 09/10	-26.64%	19.35%	-18.28%	-0.25%	30.29%	-18.67%	-5.49%
MSG position	2 of 15	6 of 15	5 of 15	3 of 15	11 of 15	4 of 15	3 of 8
MSG actual	0.968	1.248	1.438	4.189	4.058	1.126	1.68
MSG average	1.869	1.588	1.757	2.356	3.552	1.593	2.397



Detections	Central	Isle of Wight	North & East	Portsmouth	Southampton	Western	Force
YTD Detection Rate	19.77%	12.36%	15.12%	11.91%	15.89%	17.98%	15.71%
This month	8.70%	5.71%	23.64%	7.69%	7.84%	6.67%	10.73%
YTD 09/10 Detections	14.61%	15.67%	12.98%	20.30%	17.95%	21.41%	17.11%
MSG position	10 of 15	15 of 15	14 of 15	11 of 15	10 of 15	5 of 15	4 of 8
MSG actual	17.44%	12.41%	12.30%	15.63%	15.94%	20.98%	15.43%
MSG average	18.31%	21.08%	17.90%	1269.00%	18.32%	18.10%	17.38%

Note: Detections refer to Sanction Detections ONLY



Force target areas for making the most of our resources

Force target areas for equipping our staff to deliver

	Target	Actual	Central	Isle of Wight	North & East	Portsmouth	Southampton	Western
BME recruitment	5% of all recruits	6.6%	This is a Force measure					

	Target	Actual	Central	Isle of Wight	North & East	Portsmouth	Southampton	Western
Staff confidence in the organisation	61%		Data unavailable					

Minority ethnic recruitment

Force Target

The 2010/11 target is based on all police staff and police officer recruits. Data published previously has related only to police officer recruitment.

Target = 5%	All recruits	Minority ethnic recruits	Percentage
YTD January 2011	244	16	6.6%

Minority ethnic police officer recruitment

APACS 3.1

	All recruits	Minority ethnic recruits	Percentage
YTD January 2011	79	9	11.4%

Minority ethnic police staff recruitment (incl PCSOs)

	All recruits	Minority ethnic recruits	Percentage
YTD January 2011	165	7	4.2%

Female officer representation

APACS 3.2

	Male strength	Female strength	Percentage
YTD January 2011	2596.9	1033.4	28.47%

Staff confidence in the organisation

Force Target

This is a new target area for 2010/11 based up on the results of the staff survey. The initial staff survey was undertaken in May 2010. This survey provided a baseline figure on which a target could be established. The agreed target questions is: "Taking everything into consideration I am satisfied with my job". The results of the May survey showed 59% of those who responded to the survey agreed or strongly agreed with this statement. It was therefore agreed that a suitable target for 2010/11 is to achieve at least 61% the next time the survey is undertaken. It is currently proposed that the next survey is undertaken in May 2011.

Monitoring information for Catching criminals and managing offenders

Serious sexual offences - detections

Jan 2011	Central	Isle of Wight	North & East	Portsmouth	Southampton	Western	Force
Number of Crimes	278	89	202	172	272	225	1238
Number of Detections	65	21	66	36	71	55	314
Detection Rate	23.38%	23.60%	32.67%	20.93%	26.10%	24.44%	25.38%
Number of No Crimes	26	8	22	10	24	13	103

Jan 2010	Central	Isle of Wight	North & East	Portsmouth	Southampton	Western	Force
Number of Crimes	239	89	256	202	224	172	1182
Number of Detections	57	27	65	26	65	45	285
Detection Rate	23.85%	30.34%	25.29%	12.87%	29.02%	26.16%	14.78%
Number of No Crimes	23	9	20	10	31	13	106

Class A drugs sanction detections

	Central	Isle of Wight	North & East	Portsmouth	Southampton	Western	Force
YTD Jan 2011	17	64	62	30	25	68	266
Jan 2011	1	3	4	2	3	0	13
YTD Jan 2010	23	25	178	47	92	78	443
Jan 2010	2	2	47	4	18	1	74

Drug seizures information

	Central	Isle of Wight	North & East	Portsmouth	Southampton	Western	Force
YTD Sept 2010	445	885	477	403	502	301	3013
YTD Sept 2009	635	1011	441	350	548	306	3291
% change from 09/10	-29.9%	-12.5%	8.2%	15.1%	-8.4%	-1.6%	-8.4%

Force and comparable England & Wales data on 1st time entrants to criminal justice system

1st time entrant rate into criminal justice system (per 100,000 youth population)

Data set available from iQuanta (latest data 12 months to April 2009)

	Latest Position	April 2009	April 2008	April 2007	April 2006
Hampshire Constabulary	24th out of 38	1526	1812	1800	1813

Arrest and disposal information

Month - December 2010	Central	Isle of Wight	North & East	Portsmouth	Southampton	Western	Force
Charged	358	168	319	303	356	272	1776
Caution	76	31	72	71	100	74	424
Conditional caution	4	1	10	4	3	7	29
Reprimand / Final Warning	60	4	35	12	5	22	138
TIC	15	0	46	17	7	58	143
Street Warning	27	8	19	9	40	22	125
PND	42	12	44	50	44	21	213
Number of Arrests	773	346	635	691	722	615	3782

Percentage bailed on first submission

Percentage of entrants into custody bailed as first disposal

Month - December 2010	Central	Isle of Wight	North & East	Portsmouth	Southampton	Western	Force
People arrested	773	346	635	691	722	615	3782
People bailed	241	126	186	164	200	212	1129
% Bailed on First	31.2%	36.4%	29.3%	23.7%	27.7%	34.5%	29.9%

Monitoring information for Catching criminals and managing offenders

Forensic results for Vehicle Crime

DNA - Theft of a motor vehicle

	Central	Isle of Wight	North & East	Portsmouth	Southampton	Western
Dec YTD 20010/11	2	2	3	2	4	1
Dec YTD 2009/10	2	1	0	4	4	1
Difference	0	1	3	-2	0	0

Fingerprint Detections - Theft of a motor vehicle

	Central	Isle of Wight	North & East	Portsmouth	Southampton	Western
Dec YTD 20010/11	7	3	9	7	8	6
Dec YTD 2009/10	20	10	13	20	9	2
Difference	-13	-7	-4	-13	-1	4

DNA - Theft from a motor vehicle

	Central	Isle of Wight	North & East	Portsmouth	Southampton	Western
Dec YTD 20010/11	8	2	6	5	8	5
Dec YTD 2009/10	7	5	9	8	3	8
Difference	1	-3	-3	-3	5	-3

Fingerprint Detections - Theft from a motor vehicle

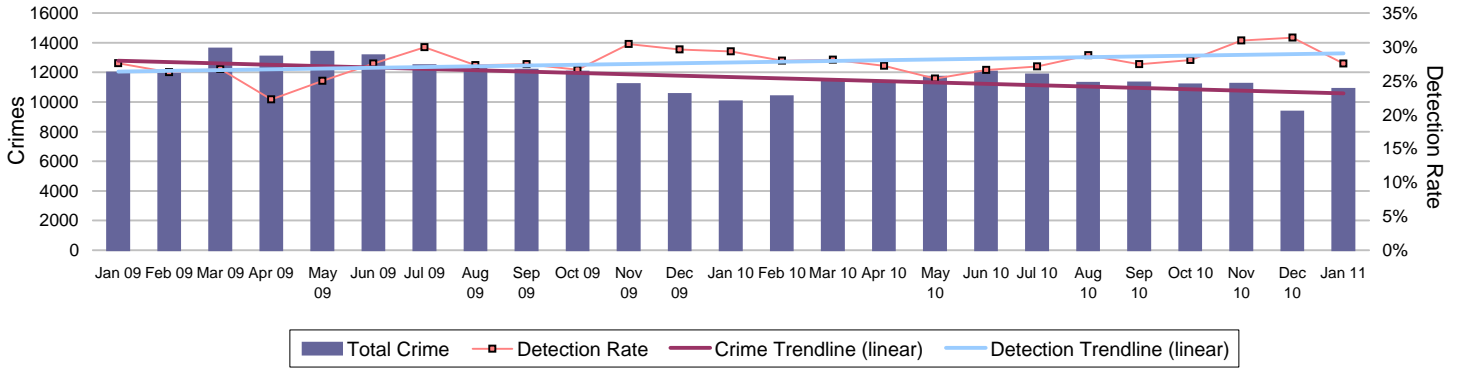
	Central	Isle of Wight	North & East	Portsmouth	Southampton	Western
Dec YTD 20010/11	11	7	9	28	13	5
Dec YTD 2009/10	20	5	13	20	10	9
Difference	-9	2	-4	8	3	-4

Outstanding suspects - suspects that are shown on RMS for offences up to and including 30/11/2010

	Central	Isle of Wight	North & East	Portsmouth	Southampton	Western	Force
Crime count	66	18	99	83	94	73	433
Total susps	81	22	112	94	104	86	499

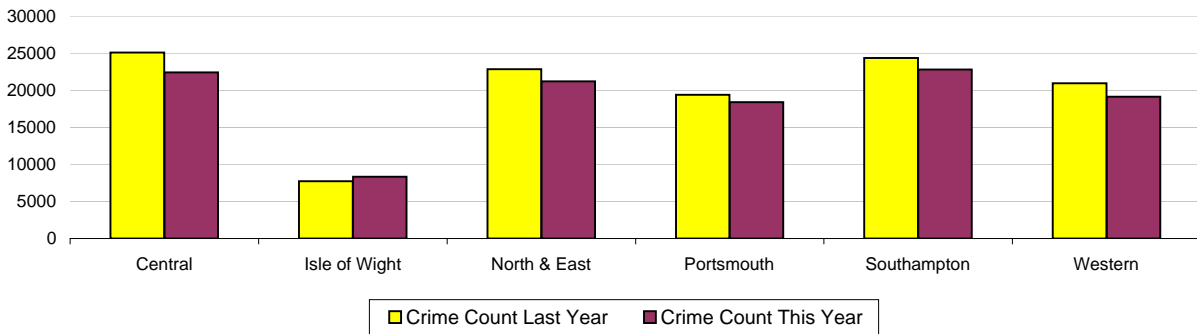
Monitoring information for Protecting our communities

All crime



Crimes

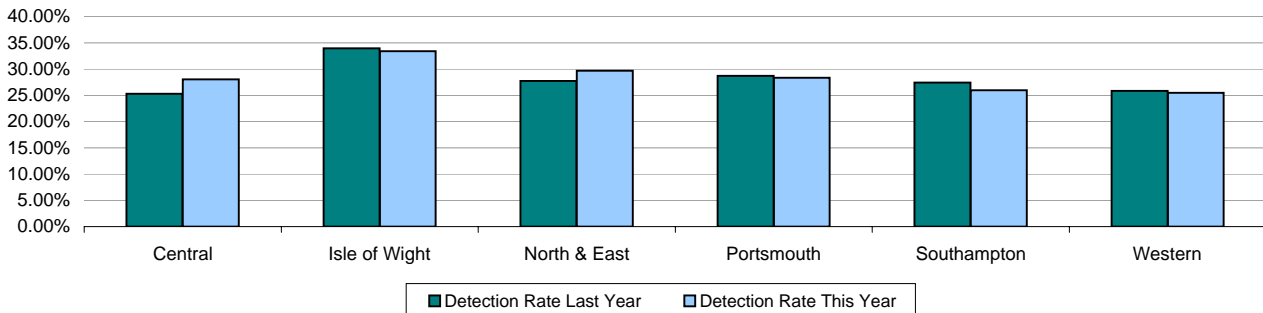
	Central	Isle of Wight	North & East	Portsmouth	Southampton	Western	Force
YTD Crimes	22395	8350	21193	18388	22791	19130	112247
YTD 09/10 Crimes	25069	7717	22848	19393	24335	20952	120314
This month	2057	655	2099	1764	2293	1996	10864
% change from 09/10	-10.67%	8.20%	-7.24%	-5.18%	-6.34%	-8.70%	-6.70%
MSG position	11 of 15	12 of 15	9 of 15	13 of 15	14 of 15	9 of 15	5 of 8
OCU actual	13.85	15.624	13.556	25.562	28.756	13.08	16.907
MSG average	13.587	14.488	13.24	21.377	22.782	12.983	15.997



Detections

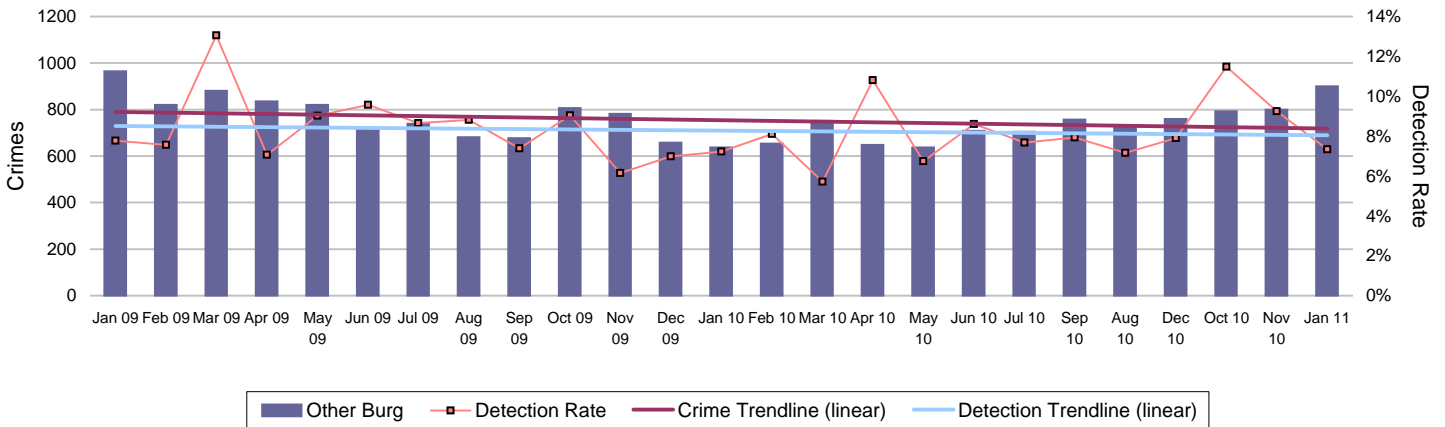
	Central	Isle of Wight	North & East	Portsmouth	Southampton	Western	Total
YTD Detection Rate	28.06%	33.43%	29.67%	28.36%	25.95%	25.49%	27.95%
This month	28.63%	36.95%	29.16%	28.91%	23.24%	25.55%	27.58%
YTD 09/10 Detections	25.31%	33.96%	27.75%	28.73%	27.47%	25.83%	27.41%
MSG position	9 of 15	4 of 15	7 of 15	4 of 15	11 of 15	13 of 15	6 of 8
OCU actual	27.06%	33.65%	29.34%	29.19%	26.42%	25.45%	27.91%
MSG average	28.00%	29.76%	28.28%	27.29%	28.54%	27.86%	28.63%

Note: Detections refer to Sanction Detections ONLY

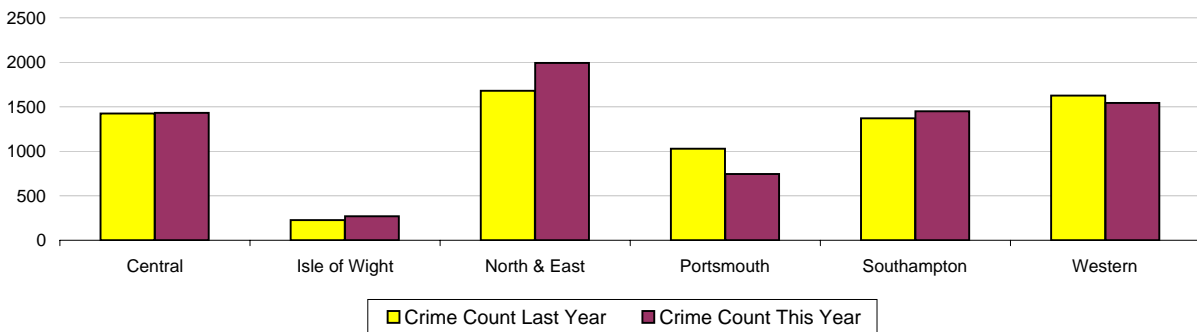


Monitoring information for Protecting our communities

Non-Dwelling Burglary

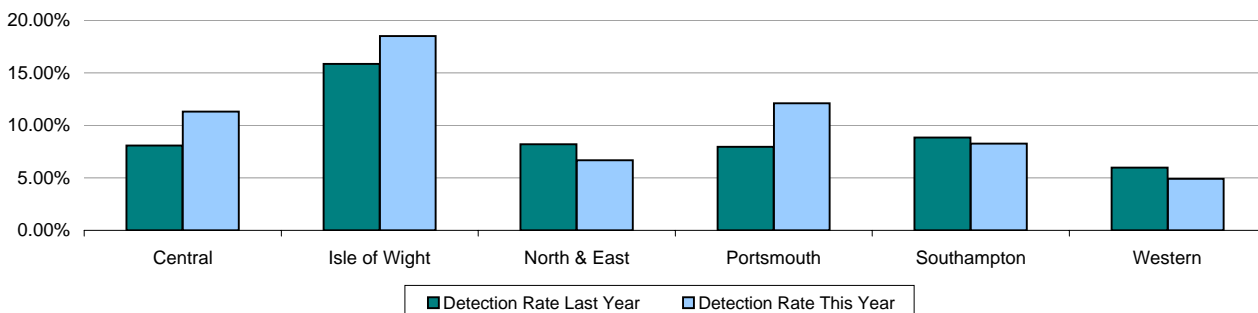


Crimes	Central	Isle of Wight	North & East	Portsmouth	Southampton	Western	Force
YTD Crimes	1431	270	1994	743	1451	1544	7433
YTD 09/10 Crimes	1423	227	1681	1030	1370	1626	7357
This month	140	32	283	70	169	206	900
% change from 09/10	0.56%	18.94%	18.62%	-27.86%	5.91%	-5.04%	1.03%
MSG position	3 of 15	1 of 15	15 of 15	6 of 15	14 of 15	9 of 15	7 of 8
OCU actual	0.953	0.521	1.629	0.963	1.965	1.155	1.252
MSG average	1.099	1.045	1.039	1.247	1.352	1.113	1.124



Detections	Central	Isle of Wight	North & East	Portsmouth	Southampton	Western	Total
YTD Detection Rate	11.32%	18.52%	6.67%	12.11%	8.27%	4.92%	8.49%
This month	4.29%	40.63%	5.30%	20.00%	7.69%	2.43%	7.33%
YTD 09/10 Detections	8.08%	15.86%	8.21%	7.96%	8.83%	5.97%	8.01%
MSG position	3 of 15	4 of 15	9 of 15	4 of 15	10 of 15	14 of 15	4 of 8
OCU actual	11.42%	14.74%	6.27%	11.20%	7.63%	5.09%	8.11%
MSG average	7.63%	11.05%	7.40%	9.87%	11.21%	7.58%	8.29%

Note: Detections refer to Sanction Detections ONLY



Monitoring information for Protecting our communities

Prolific and other Priority Offenders (PPOs) convictions

Number of convictions recorded against identified, prolific and other priority offenders (PPOs)

Further data is not available from the Ministry of Justice

Convictions	April 2010	May 2010	June 2010	July 2010	Aug. 2010	Sept. 2010	YTD
Persistent Young Offenders	4	7	7	4	1	13	36
Priority Prolific Offenders	18	19	19	18	24	23	121
Persistent Priority Prolific Young Off's	2	1	0	1	0	2	6
Young Offenders	197	187	203	249	173	186	1195

FIU1 submissions

	Central	Isle of Wight	North & East	Portsmouth	Southampton	Western	Force
YTD Jan 2011	112	106	174	113	166	102	773
Number of eligible detections	2987	1438	3237	2899	2745	2267	15573
% submission rate	4%	7%	5%	4%	6%	4%	5%

	Central	Isle of Wight	North & East	Portsmouth	Southampton	Western	Force
YTD Jan 2010	202	184	228	165	221	170	1170
Number of eligible detections	2968	1448	3190	3126	3144	2573	16449
% submission rate	7%	13%	7%	5%	7%	7%	7%

This data is taken from the January 2010 profile

	Central	Isle of Wight	North & East	Portsmouth	Southampton	Western	Force
Jan 2011	13	1	9	11	13	5	52
Number of eligible detections	265	118	336	266	274	238	1497
% submission rate	5%	1%	3%	4%	5%	2%	3%

	Central	Isle of Wight	North & East	Portsmouth	Southampton	Western	Force
Jan 2010	20	14	15	25	25	13	112
Number of eligible detections	202	100	275	277	296	221	1371
% submission rate	10%	14%	5%	9%	8%	6%	8%

2010 data is taken from the January 2010 profile. Eligible crimes are those covered by Proceeds of Crime Act (POCA)

MAPPA visits

Number of timely RSO visits

target **90%**

% of RSO visits conducted within the minimum visit guidelines (plus 2 weeks)

	Central	Isle of Wight	North & East	Portsmouth	Southampton	Western
Oct-Dec 2010	90%	100%	95%	98%	100%	91%

Timeliness of level 1 reviews

target **90%**

% of level 1 cases reviewed within timescales (plus 2 weeks)

	Central	Isle of Wight	North & East	Portsmouth	Southampton	Western
Oct-Dec 2010	88%	100%	80%	95%	100%	88%

Perceptions of local drug use

Sep-10

Hampshire	22.8%
MSG Position	6 of 8
MSG average	23.3%

This data is based on 'The percentage who perceive that people using or dealing drugs are a problem in their local area'

Monitoring information for Protecting our communities

Gun crime rate

	Central	Isle of Wight	North & East	Portsmouth	Southampton	Western	Force	MSG position up to Nov 2010
YTD Dec 2010	20	4	23	8	16	10	81	4
YTD Dec 2009	27	4	12	11	13	9	76	
% change from 08/09	-25.9%	0.0%	91.7%	-27.3%	23.1%	11.1%	6.6%	

APACS 5.5

Gun crime figures published reflect the APACS technical definition which includes "where the victim is convinced of the presence of a firearm, even if it is concealed and there is evidence of the suspect's intention to create this impression".

Knife crime rate

	Central	Isle of Wight	North & East	Portsmouth	Southampton	Western	Force	MSG position up to June 2010
YTD Dec 2010	70	25	58	71	95	31	350	3
YTD Dec 2009	66	17	92	95	118	40	428	
% change from 09/10	6.1%	47.1%	-37.0%	-25.3%	-19.5%	-22.5%	-18.2%	

APACS 5.6

Knife = knife or other sharp instrument (including broken glass/bottles) piercing the skin or, for threats and attempts, instruments normally capable of piercing the skin. The measure for counting broken glass/bottles has changed for 09-10 with less occurrences being counted by the Home Office. Knife crime figures published reflect the APACS technical definition which includes "where the victim is convinced of the presence of a knife, even if it is concealed and there is evidence of the suspect's intention to create this impression".

Murder offences

	Central	Isle of Wight	North & East	Portsmouth	Southampton	Western	Force
YTD Jan 2011	0	1	2	0	1	4	8
YTD Domestic Murders 2010/11	0	0	1	0	1	1	3
YTD Jan 2010	4	2	3	1	2	2	14
YTD Domestic Murders 2009/10	1	0	1	0	1	0	3

APACS 5.4

Note: The definition of Domestic Murder used above is now in line with the 2009/10 APACS Guidance (in previous months, the government and ACPO definition was used - this is located on pg 21 of the profile). In APACS a domestic homicide is where the relationship between victim and suspect was either: Spouse, Common law spouse or cohabiting partner, Boyfriend/Girlfriend, Ex-boyfriend/girlfriend or Adulterous relationship.

Actual cash seizure value (forfeited) by month

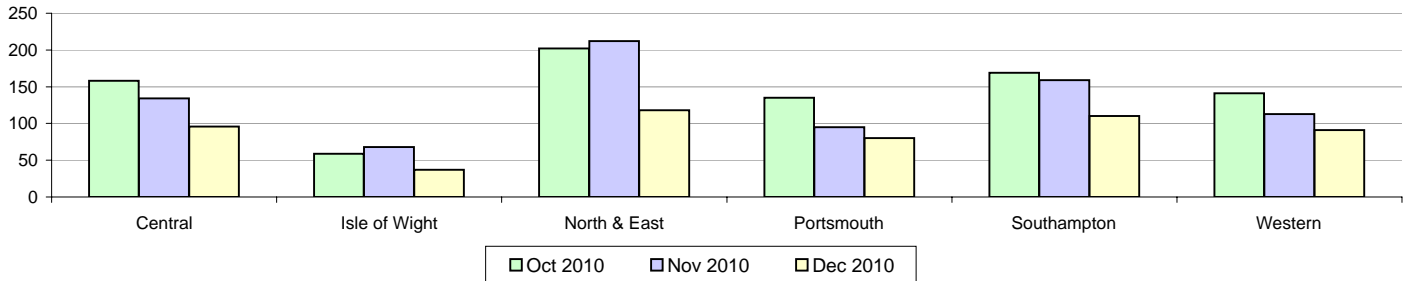
	Central	Isle of Wight	North & East	Portsmouth	Southampton	Western	Crime OCU	Operations	Force
April 2010	£0	£0	£1,745	£152,478	£6,000	£0	£0	£0	£160,223
May 2010	£0	£2,385	£7,440	£1,970	£0	£0	£0	£0	£11,795
June 2010	£0	£0	£4,805	£682	£4,205	£0	£0	£0	£9,692
July 2010	£3,299	£0	£4,660	£0	£0	£4,241	£24,910	£0	£37,110
August 2010	£5,096	£0	£0	£1,700	£1,300	£0	£0	£0	£8,096
September 2010	£2,000	£1,035	£5,632	£0	£17,900	£1,000	£0	£0	£27,567
October 2010	£0	£3,920	£0	£3,802	£0	£0	£0	£2,500	£10,222
November 2010	£0	£0	£8,337	£1,818	£4,830	£0	£0	£0	£14,984
December 2010	£0	£148,468	£0	£0	£0	£0	£0	£0	£148,468
January 2011	£3,055	£0	£0	£0	£2,705	£4,918	£0	£0	£10,678

Monitoring information for Protecting our communities

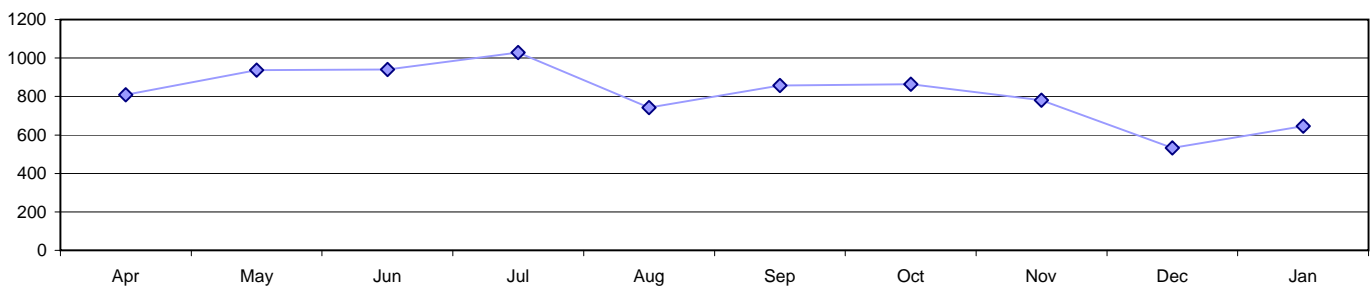
Missing Persons

Breakdown by OCU

	Central	Isle of Wight	North & East	Portsmouth	Southampton	Western	Force
Oct 2010	158	59	202	135	169	141	864
Nov 2010	134	68	212	95	159	113	781
Dec 2010	96	37	118	80	110	91	532



Missing Person Graph



Domestic Crimes and Incidents

YTD January 2011	Central	Isle of Wight	North & East	Portsmouth	Southampton	Western	Force
Domestic Crimes	1799	598	1134	1280	1494	1117	7422
Domestic Detection Rate	40.63%	40.73%	47.53%	37.73%	37.68%	38.05%	40.21%
Domestic Crimes Arrests	1500	519	942	1060	1203	895	6119
Domestic Crime Arrest Rate	83.38%	86.79%	83.07%	82.81%	80.52%	80.13%	82.44%

YTD January 2011	Central	Isle of Wight	North & East	Portsmouth	Southampton	Western	Force
Domestic Crimes	1799	598	1134	1280	1494	1117	7422
Repeat Domestic	429	135	233	372	421	252	1842
% Repeat	23.85%	22.58%	20.55%	29.06%	28.18%	22.56%	24.82%

Domestic Incidents	4360	1746	3267	3709	4412	2907	20401
Repeat Domestic	1762	815	1024	2050	2262	1029	8942
% Repeat	40.41%	46.68%	31.34%	55.27%	51.27%	35.40%	43.83%

Hate Crime

YTD January 2011	Central	Isle of Wight	North & East	Portsmouth	Southampton	Western	Force
Incidents	267	59	229	418	531	155	1659
Crimes	179	47	168	238	329	121	1082
Detections	101	17	79	101	133	53	484
Detection Rate	56.42%	36.17%	47.02%	42.44%	40.43%	43.80%	44.73%

Monitoring information for Protecting our communities

Casualty reduction

All KSIs	Central	Isle of Wight	North & East	Portsmouth	Southampton	Western	Force
YTD 2010	211	82	215	91	122	207	928
YTD 2009	229	73	184	97	98	236	917
% change from 2009	-7.86%	12.33%	16.85%	-6.19%	24.49%	-12.29%	1.20%
Dec 2010	16	7	12	4	4	11	54
Dec 2009	22	4	11	6	10	14	67
% change from 2009	-27.27%	75.00%	9.09%	-33.33%	-60.00%	-21.43%	-19.40%

Performance against RCR 2010 targets			
Dec-10	KSIs	Slight	U16 KSIs
Year Target	862	7584	86
Monthly Target	71.8	632.0	7.2
2010 Target	862.0	7584.0	86.0
Dec Actual	54	351	0
2010 Actual	928	5205	87
YTD Actual against Target	7.7%	-31.4%	1.2%

