



Force Performance Summary

July 2008

Summary

This document contains a strategic overview of the Constabulary's performance. It has a variety of performance measures within it, but for the first time our performance is aligned to the Force Control Strategy.

It is a headline document that will enable our customers, both internally and externally, to easily assess performance in key domains. Additionally with the introduction of the national performance framework called the Assessment of Police and Community Safety (APACS), it is crucial that we become focused and more accountable.

At the front of the document there are several matrices that reflect our performance against our targets, firstly year to date and secondly relevant for that particular month.

Performance in key areas is then explored in more depth with an indication of where each measure has originated - for example, APACS Statutory Performance Indicator (SPI) or a Force Control Strategy (FCS) measure.

This document is then taken forward by key stakeholders within the organisation to the Force Performance Review Group, where it is used to highlight areas of both best practice and those for development.

This is an evolving document and as such, the content may alter over time and any feedback would be welcomed by the Performance Review Team.

For the month of July we have chosen to report on Call Management performance. This is to highlight performance in a particular department which has undergone significant change over the last few months. Publishing such information will give a fuller picture in relation to their performance and enable the public to see the benefits of the change.

Index

Page

Year to date performance matrix

4-5

Monthly performance matrix

5-7

including notes on matrices terminology

Safer Neighbourhoods

8	Overall satisfaction	SPI 1.1	FCS	Consultation & Research Team
8	Being kept informed		FCS	Consultation & Research Team
8	Comparative satisfaction of minority ethnic groups	SPI 1.2		Consultation & Research Team
8	Satisfaction of victims of racist incidents	SPI 1.3		Consultation & Research Team
8	Confidence in local police	SPI 2.3	FCS	iQuanta - Quarterly
8	Understanding community issues		FCS	iQuanta - Quarterly
8	Perception of anti-social behaviour	SPI 4.1		iQuanta - Quarterly
8	Perception of drug use in local area	SPI 4.3	FCS	iQuanta - Quarterly
8	Perception of drunk or rowdy behaviour	SPI 4.2		iQuanta - Quarterly
9	Assault with less serious injury	SPI 5.3	FCS	Business Objects
10	Successful neighbourhood priorities		FCS	Neighbourhood Policing Lead - ACC 'TO' Dept
10	Anti-social use of motor vehicle (NSIR)		FCS	PRT - NSIR Return
10	Anti-social behaviour (NSIR)		FCS	PRT - NSIR Return
11	Criminal damage		FCS	Business Objects

Safeguard people

12	DV Incident arrest rate		FCS	Awaiting IT Development Work
12	DV victimisation		FCS	N/A
12	Repeat victims of domestic violence		FCS	Business Objects
12	Domestic violence OBJT rate		FCS	Criminal Justice Department
12	Hate crime detection rate		FCS	Business Objects
12	Sexual offender reoffending rate		FCS	N/A

Protect our communities

13	Number of Rainbow visits		FCS	N/A
13	Dangerous sites assessed as green		FCS	N/A
13	Road traffic casualties	SPI 9.1	FCS	8 OCU Performance Team

Prevent, reduce and detect crime

14	Serious violent crime and sanction detections	SPI 5.1	FCS	Business Objects
15	All crime		FCS	Business Objects
16	Serious acquisitive crime and sanction detections	SPI 5.2	FCS	Business Objects
17	Gun crime rate	SPI 5.5		Business Objects and Manual Checking
17	Knife crime rate	SPI 5.6		Business Objects and Manual Checking
17	Serious sexual crime OBJT rate	SPI 6.4	FCS	Criminal Justice Department
17	Murder offences		FCS	Business Objects
17	Asset recovery	SPI 8.1	FCS	Specialist Investigation Department
17	PPO convictions	SPI 10.1	FCS	Criminal Justice Department
17	Class A drugs sanction detections		FCS	Business Objects
17	Drug Intervention Measures (DIMs)			Force Intelligence

Organisational management

18	Police officer sickness	SPI 13.1	FCS	PRT - Delphi + Personnel - Staffing Figures
19	Police staff sickness	SPI 13.2	FCS	PRT - Delphi + Personnel - Staffing Figures
20	Overdue PDRs			Personnel
21	Minority Ethnic Officer Recruitment	SPI 3.1		Personnel
21	Female Officer Representation	SPI 3.2		Personnel
21	NCRS compliance		FCS	Force Incident & Crime Registrar

Specialist Operations - 7 OCU

22 Murder & domestic murder offences (SPI 5.4), CSI attendance, DNA & fingerprint identifications, forensic examinations

Specialist Operations - 8 OCU

23 Patrol availability, pre-planned operations, ANPR operations, Interventions in support of OCUs & Force Strategy

Operational Services

24 Performance highlights relating to Operation Services Departments which include Call Management, Criminal Justice Department and Personnel and Training

25 Call Management data

Restricted data

26

FCS = Force Control Strategy

PRT = Performance Review Team

SPI - Statutory Performance Indicator

Year to date performance matrix

This matrix is based on year to date comparison with 2007/2008 performance

		Target	Actual	Central	Isle of Wight	North & East	Portsmouth	Southampton	Western	Crime	Operations	
Safer Neighbourhoods	Overall satisfaction (data for rolling 12 months)	<62.0%	61.0%	63.0%	65.0%	57.0%	59.0%	59.0%	63.0%	N/A		
	Being kept informed (data for rolling 12 months)	>60.0%	46.0%	46.0%	51.0%	43.0%	44.0%	45.0%	48.0%	N/A		
	Confidence in local police	>58.5%	57.4%	Force level target - to exceed MSG average by 5% whilst not declining on current performance								
	Understanding community issues	>65.7%	65.5%	Force level target - to exceed MSG average by 3.5% whilst not declining on current performance								
	Perception of drug use in local area	<22.6%	23.0%	Force level target - be under MSG average whilst not declining on current performance								
	Assault with less serious injury*	-5.0%	6.7%	1.5%	-11.9%	15.4%	-9.2%	28.2%	-2.7%	N/A		
	OCU specific targets				-5.91%	-4.52%	0.00%	-4.00%	-8.69%	-4.21%	N/A	
	Successful neighbourhood priorities	>33.0%		Data will be available in September 2008								
	Anti-social use of motor vehicle	-5.0%	-9.1%	-5.2%	-18.3%	-15.7%	-18.1%	-12.5%	12.3%	N/A		
	Anti-social behaviour	-5.0%	-6.2%	-3.8%	-2.5%	0.3%	-13.9%	-10.1%	-5.1%	N/A		
	Reduce criminal damage	-12.0%	-9.3%	-10.8%	-12.9%	-8.3%	-5.9%	-15.1%	-2.4%	N/A		
Safer Neighbourhoods - targets achieved			2	2	4	1	3	3	2			
Safeguard people	Domestic violence incident arrest rate	>35.0%		Awaiting IT Development							N/A	
	Domestic violence victimisation	Placeholder		Placeholder							N/A	
	Repeat victims of domestic violence	-5.0%	0.9%	-1.7%	-3.3%	8.3%	-8.5%	10.1%	-3.3%	N/A		
	Domestic violence OBTJ rate	Placeholder		Placeholder							N/A	
	Hate crime detection rate	>45.0%	32.6%	31.5%	31.4%	28.0%	27.6%	39.7%	31.7%	N/A		
	Sexual offender reoffending rate	Placeholder		Placeholder								
Safeguard people - targets achieved			0	0	0	0	1	0	0			
Protect our communities	Number of Rainbow visits	Placeholder		Placeholder								
	Dangerous sites assessed as green	Placeholder		Placeholder								
	Road traffic casualties	<234	190	Owned by Operations OCU								
Protect our communities - targets achieved			1								1	

Year to date performance matrix cont'd

This matrix is based on year to date comparison with 2007/2008 performance

		Target	Actual	Central	Isle of Wight	North & East	Portsmouth	Southampton	Western	Crime	Operations	
Prevent, reduce and detect crime	Serious violent crime	-6.0%	-18.8%	18.2%	13.6%	-39.1%	-35.4%	-27.1%	-21.4%	N/A		
	Serious violent crime SD	>50.0%	55.2%	50.0%	84.0%	61.5%	52.4%	51.6%	45.5%	N/A		
	All crime*		-3.0%	-2.6%	-0.9%	-3.7%	-2.3%	-5.5%	-4.7%	0.6%	N/A	
		OCU specific targets			-2.3%	-2.3%	-1.5%	-1.5%	-4.3%	-5.3%	N/A	
	Serious acquisitive crime*		-2.0%	-8.5%	-11.1%	2.9%	-7.5%	-18.6%	-2.0%	-6.8%	N/A	
		OCU specific targets			-1.39%	-2.11%	-2.38%	-1.36%	-2.27%	-2.48%	N/A	
	Serious acquisitive crime SD	>15.0%	10.1%	11.1%	12.3%	8.6%	10.7%	9.4%	10.2%	N/A		
	Serious sexual crime OBTJ rate	Placeholder		Placeholder								
	Murder offences	<5	0	Owned by Crime OCU							0	Owned by Crime OCU
	Asset recovery (shown in £1000s)	£1,381.7	£361.7	This is a Force measure								
PPO reoffending rate	Placeholder		Placeholder									
Class A drugs SD	>134	97	Owned by Crime OCU							97	Owned by Crime OCU	
Prevent, reduce and detect crime - targets achieved		4		2	2	4	4	3	2	1		
Organisational management	Police officer sickness	<2.5	2.65	2.72	2.90	1.68	3.50	2.60	3.25	2.19	2.61	
	Police staff sickness	<2.5	2.76	3.05	3.86	2.45	3.82	2.72	3.20	2.33	1.64	
	NCRS compliance		Good	N/A		Fair	Fair	Fair	Poor	Poor	Fair	N/A
			90.0%									
	Budget spend	<25%	24.2%	25.2%	22.2%	25.2%	25.2%	25.2%	23.9%	24.0%	23.7%	25.2%
	Efficiency savings	>£10m	£2.44m	This is a Force measure								
Organisational management - targets achieved		1		0	1	2	0	1	1	3	1	
Force Total - targets achieved		8		4	7	7	8	7	5	4	2	

Monthly performance matrix

This matrix is based on monthly data compared to force target

		Target	Actual	Central	Isle of Wight	North & East	Portsmouth	Southampton	Western	Crime	Operations	
Safer Neighbourhoods	Assault with less serious injury*	<1163	1341	249	87	251	175	383	196	N/A		
	OCU specific targets			246.0	79.0	204.9	163.1	284.5	185.6	N/A		
	Successful neighbourhood priorities	> 33.0%		Data will be available in September 2008								
	Anti-social use of motor vehicle	<1410	1503	357	86	258	115	263	368	N/A		
	OCU specific targets			302.5	94.5	269.4	139.0	252.2	279.6	N/A		
	Anti-social behaviour	<7843	8889	1828	646	1688	1222	1987	1390	N/A		
	OCU specific targets			1647.1	575.0	1346.3	1227.5	1674.6	1246.5	N/A		
	Reduce criminal damage	<2908	2911	579	219	564	374	582	593	N/A		
OCU specific targets			635.5	228.1	523.9	362.1	620.4	537.9	N/A			
Safer Neighbourhoods - targets achieved			0	1	2	1	2	1	0			
Safeguard people	Domestic violent incident arrest rate	> 35.0%		Awaiting IT Development							N/A	
	Domestic violence victimisation	Placeholder		Placeholder							N/A	
	Domestic violence OBJT rate	Placeholder		Placeholder							N/A	
	Hate crime detection rate	>45.0%	33.9%	28.1%	46.2%	15.0%	30.8%	42.3%	48.3%	N/A		
	Sexual offender reoffending rate	Placeholder		Placeholder								
Safeguard people - targets achieved			0	0	1	0	0	0	1			
Protect our communities	Number of Rainbow visits	Placeholder		Placeholder								
	Dangerous sites assessed as green	Placeholder		Placeholder								
Protect our communities - targets achieved												

Monthly performance matrix cont'd

This matrix is based on monthly data compared to force target

		Target	Actual	Central	Isle of Wight	North & East	Portsmouth	Southampton	Western	Crime	Operations	
Prevent, reduce and detect crime	Serious violent crime	<75	63	15	6	13	10	17	2	N/A		
	OCU specific targets				13.0	7.0	12.6	14.4	21.1	6.6	N/A	
	Serious violent crime SD	>50.0%	66.7%	80.0%	50.0%	46.2%	40.0%	88.2%	100.0%	N/A		
	All crime*	<13588	14004	2834	903	2672	2103	2830	2662	N/A		
	OCU specific targets				2779.3	939.4	2551.9	2104.9	2871.8	2341.1	N/A	
	Serious acquisitive crime*	<1900	1865	321	94	376	306	385	383	N/A		
	OCU specific targets				336.3	80.7	371.6	311.7	422.7	377.4	N/A	
	Serious acquisitive crime SD	>15.0%	9.5%	8.7%	10.6%	4.0%	8.5%	15.6%	9.9%	N/A		
	Serious sexual crime OBTJ rate	Placeholder		Placeholder								
	Asset recovery	£344,483	£5,239	This is Force measure								
PPO reoffending rate	Placeholder		Placeholder									
Class A drugs SD	>33	17	Owned by Crime OCU							17	Owned by Crime OCU	
Prevent, reduce and detect crime - targets achieved		3	2	3	0	3	5	2	0			
Organisational management	Police officer sickness	<0.63	0.50	0.53	0.88	0.36	0.80	0.12	0.79	0.45	0.19	
	Police staff sickness	<0.63	0.63	0.88	0.76	0.37	0.76	0.45	1.00	0.73	0.12	
	Organisational management - targets achieved		1	1	0	2	0	2	0	1	2	
Force Total - targets achieved		4	4	6	3	5	8	3	1	2		

Notes to be read in conjunction with matrices

All citizen focus data

OBTJ

Road traffic casualties

Budget spend

Efficiency savings

Placeholder

SD

Anti-social use of motor vehicle & behaviour

Sickness data

OCU specific targets

Asset recovery

* = variable targets across OCUs for these target areas based on previous performance and MSG position

Based on "completely or very satisfied"

Offenders Brought To Justice

All data until 30 June 2008

Data is always one month in arrears

3 year target of £30m, notionally £10m per year

Target and supporting information to be confirmed

Sanction detections

Data is obtained from NSIR and always 1 month in arrears

Force Actual = total for ALL officers/police staff - including those not in OCU

OCU specific targets are rounded to 1 decimal place, the actual figure

may therefore seem the same but appear red due to this rounding

Asset recovery is the sum total of the values of cash forfeitures and confiscation orders

Safer Neighbourhoods

Overall satisfaction

Rolling 12 months data relates to: Aug 07 - July 08; rolling 3 months data relates to May 08 - July 08
Overall satisfaction includes burglary, vehicle crime, violent crime and RTCs

Target 62%	Central	Isle of Wight	North & East	Portsmouth	Southampton	Western	Force	No. Surveys
Rolling 12 months	63%	65%	57%	59%	59%	63%	61%	9577
Rolling 3 months	64%	60%	61%	62%	60%	63%	62%	1949

Being kept informed

Rolling 12 months data relates to: Aug 07 - July 08; rolling 3 months data relates to May 08 - July 08
Being kept informed includes burglary, vehicle crime, violent crime and RTCs

Target 60%	Central	Isle of Wight	North & East	Portsmouth	Southampton	Western	Force	No. Surveys
Rolling 12 months	46%	51%	43%	44%	45%	48%	46%	9337
Rolling 3 months	47%	52%	49%	45%	47%	46%	48%	1899

Comparative satisfaction of minority ethnic groups

Data relates to interviews which took place May 07 - Apr 08
These figures are for overall satisfaction for burglary, vehicle crime, violent crime & RTCs; it excludes racist incidents

	Completely and very satisfied	Completely, very and fairly satisfied
White	61.2%	80.6%
Minority Ethnic	53.9%	75.2%

Satisfaction of victims of racist incidents

These figures relate to interviews which took place May 07 - Apr 08; these will be updated quarterly
Racist incident overall satisfaction = % completely or very satisfied

	Central	Isle of Wight	North & East	Portsmouth	Southampton	Western	Force
%	46%	60%	74%	64%	47%	78%	60%
Number of surveys	24	10	23	42	53	27	179

British Crime Survey data

This data is updated by iQuanta approximately every quarter.

Data 12 mths to March	Confidence in local police		Understanding community issues		Targets MSG = Most Similar Group	
Avon & Somerset	48.3%		59.4%		Confidence in local police To exceed MSG by 5% whilst maintaining performance	
Bedfordshire	52.2%		63.1%		Understanding community issues To exceed MSG by 3.5% whilst maintaining performance	
Essex	53.5%		59.5%			
Hampshire	57.4%	2nd in MSG	65.5%	2nd in MSG	Perception of drug use To be under MSG whilst maintaining performance	
Hertfordshire	58.2%		67.1%			
Kent	49.8%		59.2%			
Sussex	52.0%		60.6%			
Thames Valley	56.7%		63.0%			
MSG	53.5%		62.2%			

Data 12 mths to March	Perception of anti-social behaviour		Perception of drug use		Perception of drunk or rowdy behaviour	
Avon & Somerset	14.0%		24.0%		26.1%	
Bedfordshire	17.2%		25.1%		21.6%	
Essex	10.3%		17.1%		21.0%	
Hampshire	14.9%	5th in MSG	23.0%	5th in MSG	28.8%	8th in MSG
Hertfordshire	14.5%		22.9%		23.5%	
Kent	15.4%		21.5%		20.7%	
Sussex	13.4%		21.0%		22.2%	
Thames Valley	17.0%		26.0%		26.2%	
MSG	14.6%		22.6%		23.8%	

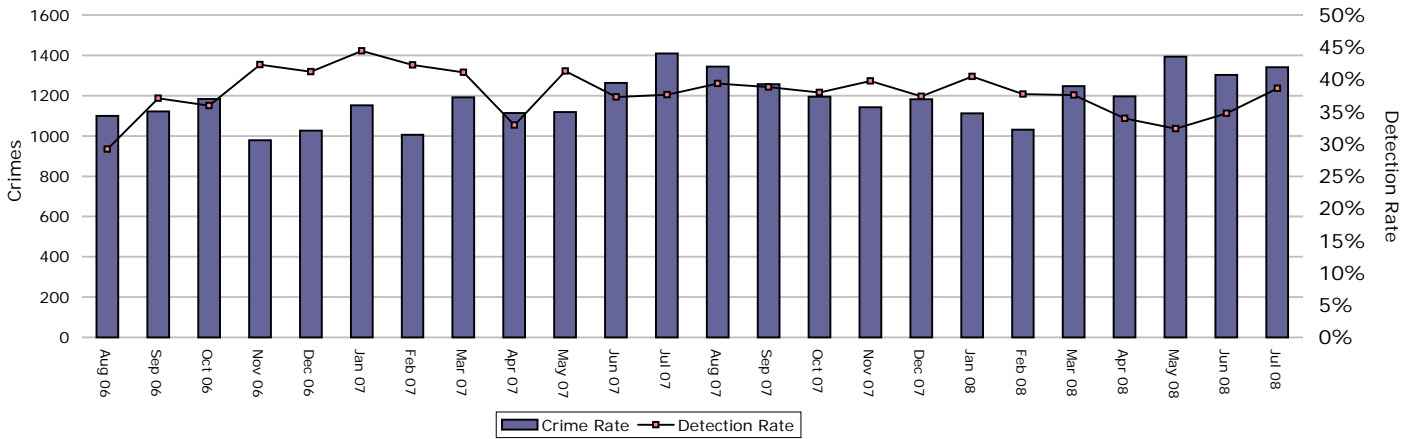
The target for the three areas below is not to decline against previous performance

	Dec 2007	Mar 2008	Jun 2008	Sep 2008	Dec 2008
Confidence in local police	57.4%	57.4%			
Understanding community issues	64.2%	65.5%			
Perception of drug use	23.0%	23.0%			

Safer Neighbourhoods

Assault with less serious injury

Assault with less serious injury consists of crimsec codes 8G and 8J

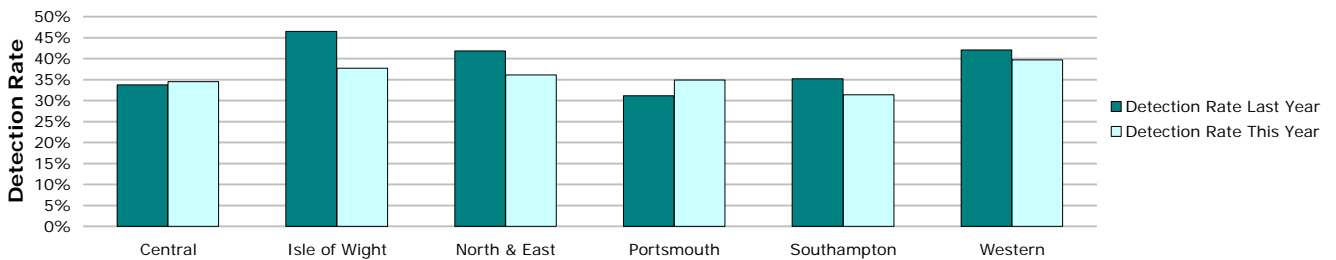


Crimes	Central	Isle of Wight	North & East	Portsmouth	Southampton	Western	Force
YTD Crimes	1072	326	897	662	1483	794	5234
YTD Target	968	311	807	642	1120	730	4577
YTD 07/08 Crimes	1056	370	777	729	1157	816	4905
This month	249	87	251	175	383	196	1341
% change from 07/08	1.52%	-11.89%	15.44%	-9.19%	28.18%	-2.70%	6.71%
MSG position	15 of 15	10 of 15	14 of 15	4 of 9	15 of 15	9 of 15	8 of 8



Detections	Central	Isle of Wight	North & East	Portsmouth	Southampton	Western	Force
YTD Detection Rate	34.51%	37.73%	36.12%	34.89%	31.36%	39.67%	34.93%
This month	34.94%	41.38%	32.67%	44.57%	41.78%	38.27%	38.63%
YTD 07/08 Detections	33.71%	46.49%	41.83%	31.14%	35.18%	42.03%	37.31%
MSG position	13 of 15	11 of 15	12 of 15	6 of 9	12 of 15	11 of 15	6 of 8

Note: Detections refer to Sanction Detections ONLY



Safer Neighbourhoods

Successful neighbourhood priorities

Data will be available in September 2008

Anti-social use of motor vehicle

Data to be provided a month in arrears. It is gathered using Altaris closing codes as the primary data source, then RMS as the secondary data source to gather incidents not recorded within Altaris.

The Force total does not add up to the sum of OCUs, this is due to Altaris incident logs which do not contain a geographic location.

	Central	Isle of Wight	North & East	Portsmouth	Southampton	Western	Force
YTD Apr 08 to Jun 08	1067	273	832	403	789	1132	4667
YTD Apr 07 to Jun 07	1126	334	987	492	902	1008	5135
June	357	86	258	115	263	368	1503
YTD Target	917.5	286.7	817.3	421.6	765.1	848.2	4276.8
% v target	16.3%	-4.8%	1.8%	-4.4%	3.1%	33.5%	9.1%
% change from 07/08	-5.2%	-18.3%	-15.7%	-18.1%	-12.5%	12.3%	-9.1%

Anti-social use of motor vehicle - relates to NSIR category Vehicle Nuisance/Inappropriate Use within the Anti-Social Behaviour Grouping

Anti-social behaviour

Data to be provided a month in arrears. It is gathered using Altaris closing codes as the primary data source, then RMS as the secondary data source to gather incidents not recorded within Altaris.

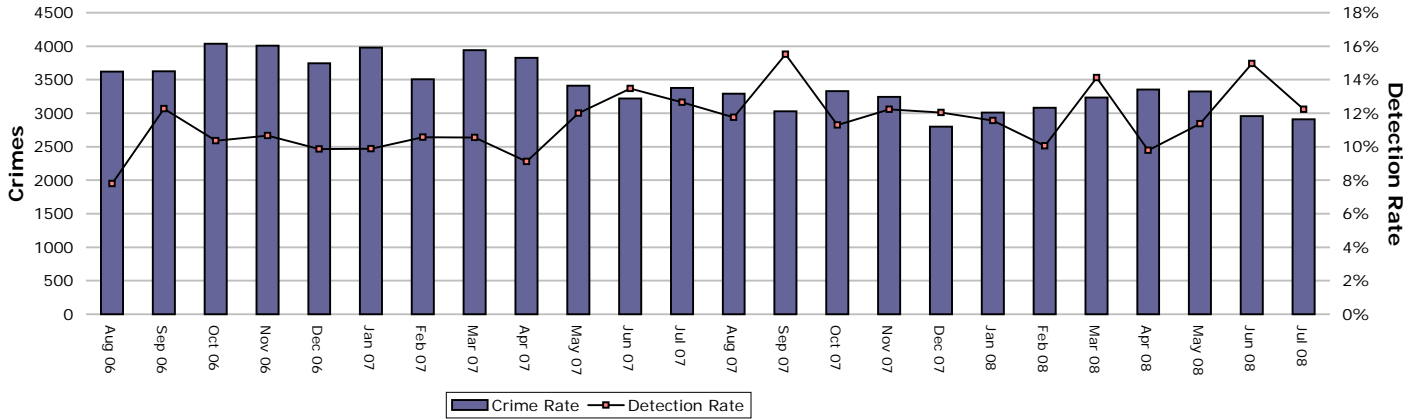
The Force total does not add up to the sum of OCUs, this is due to Altaris incident logs which do not contain a geographic location.

	Central	Isle of Wight	North & East	Portsmouth	Southampton	Western	Force
YTD Apr 08 to Jun 08	5808	2036	5031	3899	5920	4307	27368
YTD Apr 07 to Jun 07	6040	2088	5017	4529	6583	4537	29185
June	1828	646	1688	1222	1987	1390	8889
YTD Target	4996.3	1744.2	4083.8	3723.3	5079.5	3781.1	23791.1
% v target	16.2%	16.7%	23.2%	4.7%	16.5%	13.9%	15.0%
% change from 07/08	-3.8%	-2.5%	0.3%	-13.9%	-10.1%	-5.1%	-6.2%

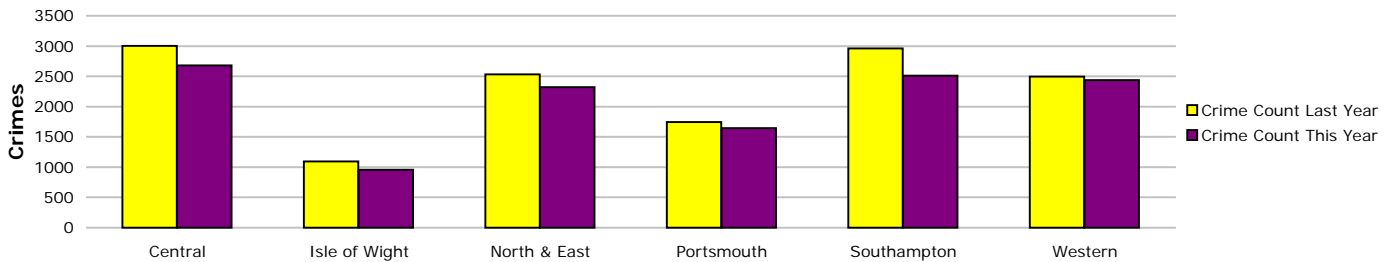
Anti-social behaviour - relates to NSIR categories Environmental Damage/Littering, Rowdy & Inconsiderate and Neighbours within the Anti-Social Behaviour Grouping

Safer Neighbourhoods

Criminal damage

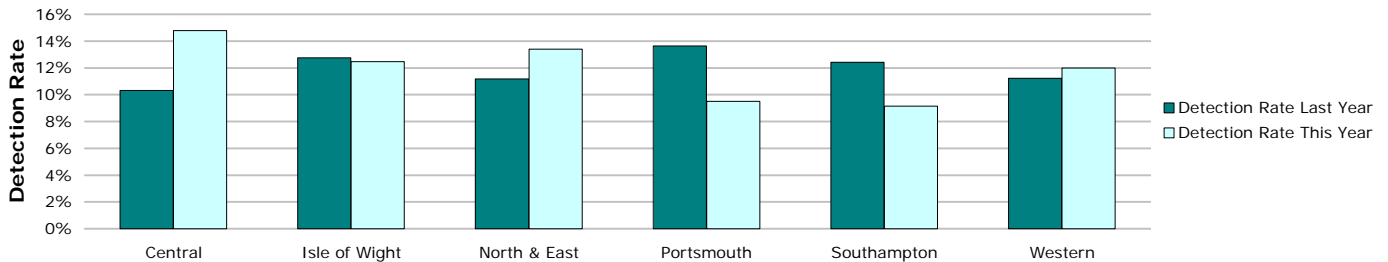


Crimes	Central	Isle of Wight	North & East	Portsmouth	Southampton	Western	Force
YTD Crimes	2679	955	2322	1643	2513	2436	12548
YTD Target	2501	898	2062	1425	2442	2117	11444
YTD 07/08 Crimes	3003	1097	2532	1746	2961	2496	13835
This month	579	219	564	374	582	593	2911
% change from 07/08	-10.79%	-12.94%	-8.29%	-5.90%	-15.13%	-2.40%	-9.30%
MSG position	15 of 15	15 of 15	13 of 15	7 of 9	15 of 15	13 of 15	8 of 8



Detections	Central	Isle of Wight	North & East	Portsmouth	Southampton	Western	Force
YTD Detection Rate	14.78%	12.46%	13.39%	9.49%	9.15%	11.99%	11.99%
This month	12.09%	15.07%	12.06%	9.09%	9.79%	15.85%	12.23%
YTD 07/08 Detections	10.32%	12.76%	11.18%	13.63%	12.43%	11.22%	11.70%
MSG position	8 of 15	13 of 15	11 of 15	7 of 9	15 of 15	14 of 15	7 of 8

Note: Detections refer to Sanction Detections ONLY



Safeguard people

Domestic violence incident arrest rate

This target is based on domestic violence incidents and has required work to be undertaken by IT Services to enable the arrest rate to be calculated. Once this work has been completed and tested, data will be available and a baseline can be established.

Domestic violence victimisation

Placeholder - This measure was a joint APACS and National Indicator Set measure looking at the work of MARACS. This measure was dropped from the 2008/09 APACS guidance, however is expected to be included in the 2009/10 guidance, at which time technical guidance will be published to enable reporting.

Repeat victims of domestic violence

Domestic violence is defined by ACPO as: 'any incidence of threatening behaviour, violence or abuse (psychological, physical, sexual, financial or emotional) between adults, aged 18 and over, who are or have been intimate partners or family members, regardless of gender or sexuality'

Incidents	Central	Isle of Wight	North & East	Portsmouth	Southampton	Western	Force
YTD All Domestic Violence	1612	488	1211	1384	1622	749	7066
YTD 07/08 All Domestic Violence	1601	456	985	1316	1531	968	6857
YTD Repeat Victims	698	196	352	735	484	311	2776
YTD 07/08 Repeat Victims	697	187	341	661	435	334	2655
YTD % Repeat Victims	43.3%	40.2%	29.1%	53.1%	29.8%	41.5%	39.3%
YTD 07/08% Repeat Victims	43.5%	41.0%	34.6%	50.2%	28.4%	34.5%	38.7%

Crimes - Target -5% in repeat victims	Central	Isle of Wight	North & East	Portsmouth	Southampton	Western	Force
YTD All Domestic Violence	712	206	509	430	655	445	2957
YTD 07/08 All Domestic Violence	724	213	470	470	595	460	2932
This month All Domestic Violence	208	46	141	116	172	114	797
YTD Repeat Victims	169	41	123	123	181	97	734
YTD 07/08 Repeat Victims	195	42	85	137	123	79	661
This month Repeat Victims	48	10	33	40	41	25	197
YTD % Repeat Victims	23.7%	19.9%	24.2%	28.6%	27.6%	21.8%	24.8%
YTD 07/08% Repeat Victims	26.9%	19.7%	18.1%	29.1%	20.7%	17.2%	22.5%
This month % Repeat Victims	23.1%	21.7%	23.4%	34.5%	23.8%	21.9%	24.7%
% change in repeat victims from 07/08	-1.7%	-3.3%	8.3%	-8.5%	10.1%	-3.3%	0.9%

Note: Crimes are a subset of the incident data. This data reflects ALL crime types, and is not restricted to purely 'violent' offences

Domestic violence OBTJ rate

The Office for Criminal Justice Reform is working on the breakdown as required within this Summary which will be available shortly. The Serious Sexual Offences measure includes the domestic violence OBTJ rate which currently cannot be individually extracted. The table below shows the percentage of persons brought to justice for domestic violence (DV) incidents against the total number of DV incidents.

OBTJ Crime category	OBTJ Rate	
	Apr-08	Rolling average
Tier 1: Serious Sexual Offences	30%	28%

Hate crime detection rate

Hate Crime includes all crimes flagged within RMS with a Hate Crime indicator excluding those flagged purely as Police or Domestic.

Target >45%

Year to Date	Central	Isle of Wight	North & East	Portsmouth	Southampton	Western	Force
Incidents	245	61	220	211	319	150	1206
Crimes	130	51	132	145	229	126	813
Detections	41	16	37	40	91	40	265
Detection Rate	31.54%	31.37%	28.03%	27.59%	39.74%	31.75%	32.60%

Month	Central	Isle of Wight	North & East	Portsmouth	Southampton	Western	Force
Incidents	53	13	61	43	72	30	272
Crimes	32	13	40	26	52	29	192
Detections	9	6	6	8	22	14	65
Detection Rate	28.13%	46.15%	15.00%	30.77%	42.31%	48.28%	33.85%

Sexual offender reoffending rate

This indicator was contained within the draft APACS/National Indicator Set measures, however following national consultation this was removed from both sets. Hampshire has not yet identified how this target will be measured in the absence of technical guidance.

Protect our communities

Number of Rainbow visits

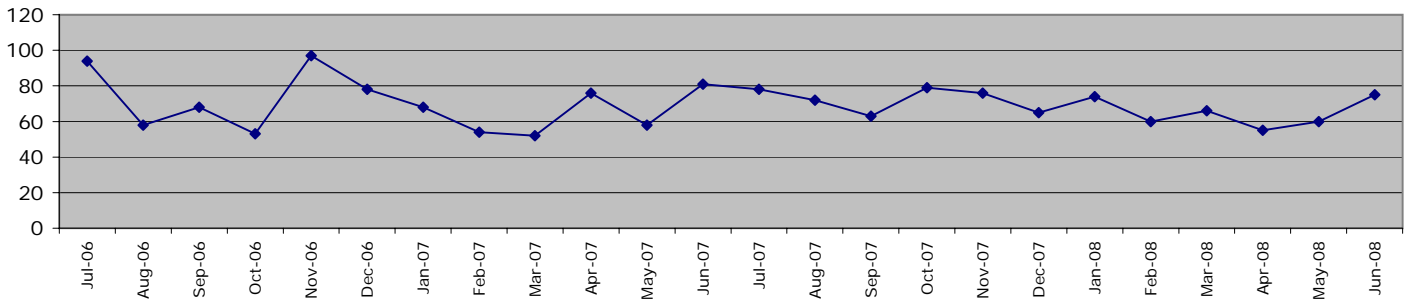
Work is currently being piloted by SO Portfolio using INCA data and looking at the time spent at Rainbow sites. If this work is successful then this work will be rolled out. Once base data is available it will be possible to establish a target figure for the Force.

Dangerous sites assessed as green

Guidance has recently been received in relation to this Key Diagnostic Indicator. Work is currently underway to establish how this data will be collected and to establish a baseline and target information.

Road traffic casualties

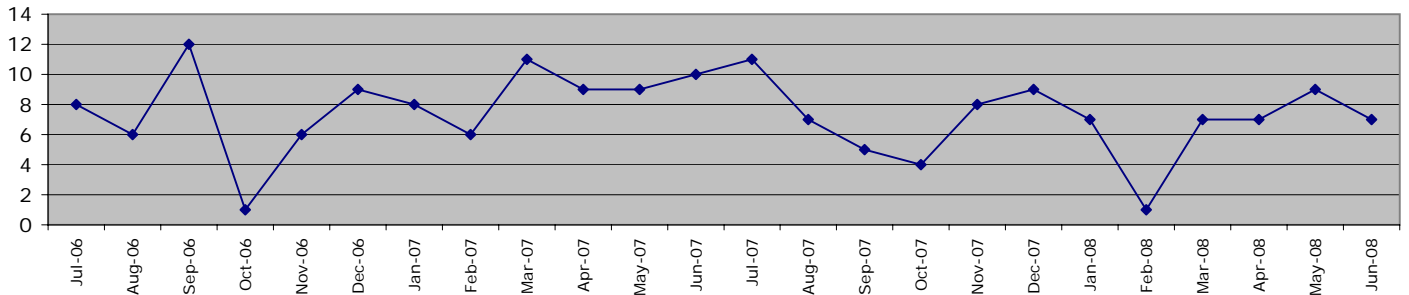
Fatal/serious injury casualties - all victims



The Force target 2008/2009 is for less than 938 casualties, which equates to less than 234 in 91 days YTD June 2008 = 190 casualties

	Central	Isle of Wight	North&East	Portsmouth	Southampton	Western	Force
1 April 2008 - 30 June 2008	33	23	36	24	20	54	190
of these, fatalities were	2	3	1	1	0	3	10
1 April 2007 - 30 June 2007	37	17	54	23	16	56	203

Fatal/serious injury casualties - victims under 16 years



The DETR target is for a 50% reduction in child casualties by 2010 from 164 to 82 (Target 2008/2009 = 94)

	Central	Isle of Wight	North&East	Portsmouth	Southampton	Western	Force
1 April 2008 - 30 June 2008	5	5	5	4	2	2	23
of these, fatalities were	0	0	0	0	0	0	0
1 April 2007 - 30 June 2007	3	1	3	7	1	2	17

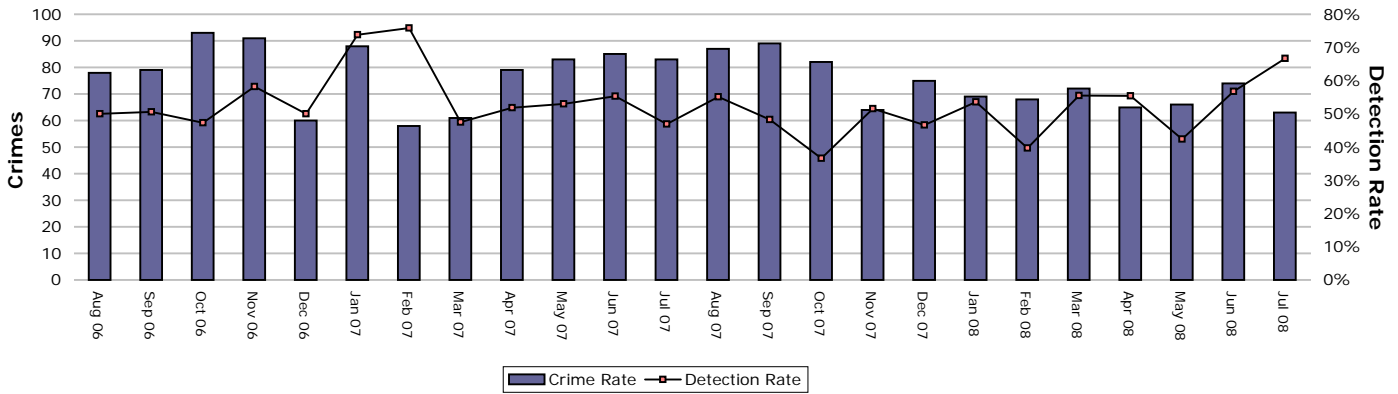
NOTE: YTD numbers may change as the accident record data are updated each month

NOTE: The casualties in East Hampshire have all been attributed to North & East OCU in the absence of a breakdown by OCUs

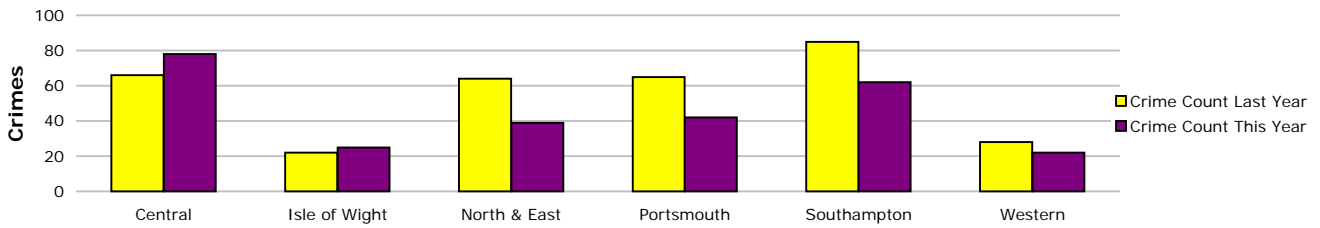
Prevent, reduce and detect crime

Serious violent crime

Serious violent crime consists of crimsec codes 1, 2, 4.1-4.4, 4.6, 4.8, 5A, 5B, 5C, 8F, 8H and 37.1



Crimes	Central	Isle of Wight	North & East	Portsmouth	Southampton	Western	Force
YTD Crimes	78	25	39	42	62	22	268
YTD Target	51	27	49	56	83	26	293
YTD 07/08 Crimes	66	22	64	65	85	28	330
This month	15	6	13	10	17	2	63
% change from 07/08	18.18%	13.64%	-39.06%	-35.38%	-27.06%	-21.43%	-18.79%
MSG position	14 of 15	9 of 15	5 of 15	5 of 9	15 of 15	2 of 15	4 of 8



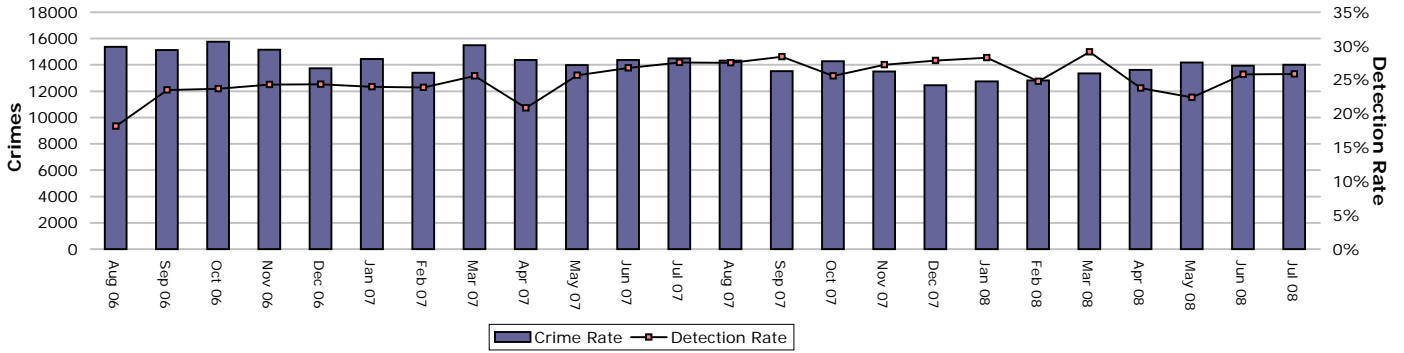
Detections	Central	Isle of Wight	North & East	Portsmouth	Southampton	Western	Force
Target >50%							
YTD Detection Rate	50.00%	84.00%	61.54%	52.38%	51.61%	45.45%	55.22%
This month	80.00%	50.00%	46.15%	40.00%	88.24%	100.00%	66.67%
YTD 07/08 Detections	63.64%	22.73%	59.38%	40.00%	56.47%	42.86%	51.82%
MSG position	10 of 15	1 of 15	2 of 15	3 of 9	6 of 15	8 of 15	2 of 8

Note: Detections refer to Sanction Detections ONLY

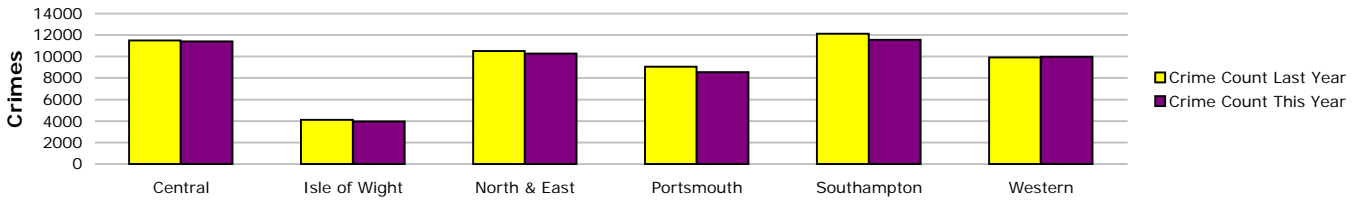


Prevent, reduce and detect crime

All crime



Crimes	Central	Isle of Wight	North & East	Portsmouth	Southampton	Western	Force
YTD Crimes	11406	3949	10283	8556	11565	9991	55750
YTD Target	10938	3697	10043	8284	11302	9214	53477
YTD 07/08 Crimes	11512	4099	10527	9057	12133	9930	57258
This month	2834	903	2672	2103	2830	2662	14004
% change from 07/08	-0.92%	-3.66%	-2.32%	-5.53%	-4.68%	0.61%	-2.63%
MSG position	12 of 15	12 of 15	7 of 15	7 of 9	13 of 15	9 of 15	6 of 8



Detections	Central	Isle of Wight	North & East	Portsmouth	Southampton	Western	Force
Target >25%							
YTD Detection Rate	24.04%	30.74%	25.77%	25.18%	23.55%	21.69%	24.49%
This month	23.57%	36.43%	25.15%	27.58%	27.81%	22.16%	25.89%
YTD 07/08 Detections	21.46%	28.81%	27.95%	26.84%	25.55%	23.31%	25.22%
MSG position	11 of 15	7 of 15	9 of 15	2 of 9	11 of 15	15 of 15	5 of 8

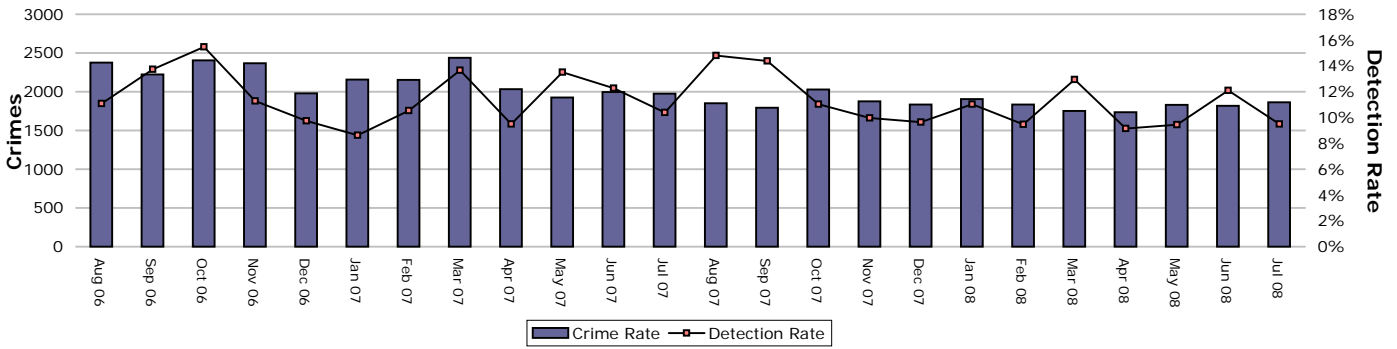
Note: Detections refer to Sanction Detections ONLY



Prevent, reduce and detect crime

Serious acquisitive crime

Serious acquisitive crime consists of crimsec codes 28, 29, 34A, 34B, 37/2, 45 and 48

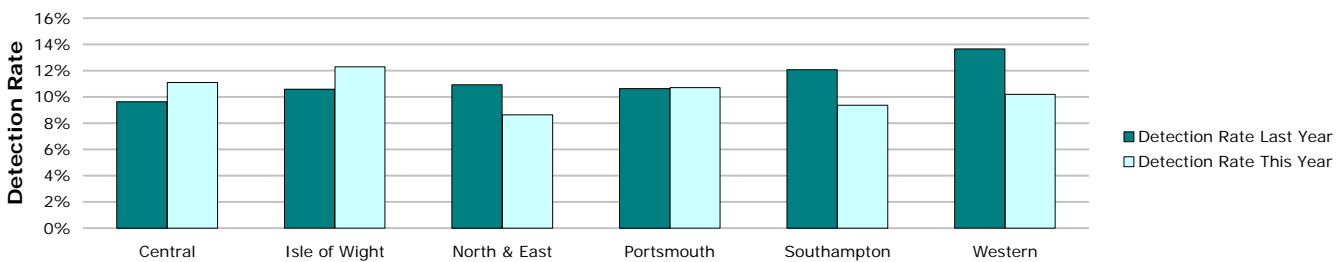


Crimes	Central	Isle of Wight	North & East	Portsmouth	Southampton	Western	Force
YTD Crimes	1244	350	1345	1242	1657	1412	7250
YTD Target	1324	318	1462	1227	1664	1485	7479
YTD 07/08 Crimes	1400	340	1454	1525	1691	1515	7925
This month	321	94	376	306	385	383	1865
% change from 07/08	-11.14%	2.94%	-7.50%	-18.56%	-2.01%	-6.80%	-8.52%
MSG position	3 of 15	4 of 15	5 of 15	3 of 9	9 of 15	10 of 15	2 of 8



Detections	Central	Isle of Wight	North & East	Portsmouth	Southampton	Western	Force
Target >15%							
YTD Detection Rate	11.09%	12.29%	8.62%	10.71%	9.35%	10.20%	10.06%
This month	8.72%	10.64%	3.99%	8.50%	15.58%	9.92%	9.49%
YTD 07/08 Detections	9.64%	10.59%	10.94%	10.62%	12.06%	13.66%	11.39%
MSG position	10 of 15	8 of 15	14 of 15	3 of 9	9 of 15	11 of 15	7 of 8

Note: Detections refer to Sanction Detections ONLY



Prevent, reduce and detect crime

Gun crime rate

	Central	Isle of Wight	North & East	Portsmouth	Southampton	Western	Force
YTD July 2008	7	2	13	6	13	8	49
YTD July 2007	19	1	8	11	6	10	55
% change from 07/08	-63.2%	100.0%	62.5%	-45.5%	116.7%	-20.0%	-10.9%

Gun crime figures published reflect the APACS technical definition for 2008/09 which differs from that used in 2007/08. Manual checking has been undertaken to try to provide comparative 2007/08 figures, however it is not possible to provide completely comparable figures. In 2008/09 gun crime includes "where the victim is convinced of the presence of a firearm, even if it is concealed and there is evidence of the suspect's intention to create this impression"; these occurrences were not included in 2007/08 data

Knife crime rate

	Central	Isle of Wight	North & East	Portsmouth	Southampton	Western	Force
YTD July 2008	57	13	48	49	77	35	279
YTD July 2007	48	19	49	79	75	28	298
% change from 07/08	18.8%	-31.6%	-2.0%	-38.0%	2.7%	25.0%	-6.4%

Knife = knife or other sharp instrument (including broken glass/bottles) piercing the skin or, for threats and attempts, instruments normally capable of piercing the skin

Knife crime figures published reflect the APACS technical definition for 2008/09 which differs from that used in 2007/08. Manual checking has been undertaken to try to provide comparative 2007/08 figures, however it is not possible to provide completely comparable figures. In 2008/09 knife crime includes "where the victim is convinced of the presence of a knife, even if it is concealed and there is evidence of the suspect's intention to create this impression"; these occurrences were not included in 2007/08 data

Serious sexual crime OBTJ rate

The table below shows the percentage of persons brought to justice for serious sexual crimes against the total number of serious sexual crimes

OBTJ Crime category	OBTJ Rate	
	April 08	Rolling average
Tier 1: Serious Sexual Offences	24%	21%

Murder offences

2008/2009 target = <16 murder offences

	Central	Isle of Wight	North & East	Portsmouth	Southampton	Western	Force
YTD July 2008	0	0	0	0	0	0	0
YTD July 2007	1	0	2	1	1	1	6
% change from 07/08							-100.0%

For more information, please go to the Specialist Operations - 7 OCU page

Asset recovery

Asset recovery is the sum total of the values of cash forfeitures and confiscation orders

	Central	Isle of Wight	North & East	Portsmouth	Southampton	Western	Force
April 2008	£38,187.90	£0.00	£18,413.50	£0.00	£0.00	£0.00	£56,601.40
May 2008	£0.00	£0.00	£0.00	£0.00	£69,735.00	£0.00	£69,735.00
June 2008	£76,739.37	£0.00	£140,060.50	£0.00	£8,676.00	£4,693.00	£230,168.87
July 2008	£0.00	£0.00	£0.00	£1,104.00	£2,035.00	£2,100.00	£5,239.00
Cumulative total	£114,927.27	£0.00	£158,474.00	£1,104.00	£80,446.00	£6,793.00	£361,744.27

Prolific and other Priority Offenders (PPOs) convictions

Currently the data available only enables the number of convictions recorded against PPOs to be reported.

The SPI measure and Force target are to be based on the conviction rate, however, work is being undertaken to enable reporting on this measure in line with guidance. It has been intimated to us that data should be in time for the September summary

Guilty Verdict	January 08	February 08	March 08
Prolific and other Priority Offenders	3	1	2
Persistent Young Offenders	7	9	13

Class A drugs sanction detections

	Central	Isle of Wight	North & East	Portsmouth	Southampton	Western	Crime	YTD July 2008 target		
								Operations	No OIC	Force
YTD July 2008	6	13	23	9	11	5	29	1	0	97
YTD July 2007	15	8	26	13	9	3	6	1	4	85

Drug Intervention Measures (DIMs)

	Central	Isle of Wight	North & East	Portsmouth	Southampton	Western	Crime	Force
YTD July 2008	No data submitted							No data
YTD July 2007	0	6	10	0	0	3	0	19
% change from 07/08	No data submitted							No data

Note: The large variance between YTD 2007 and YTD 2008 is partially due to changes in the process for submissions up until Sept 07

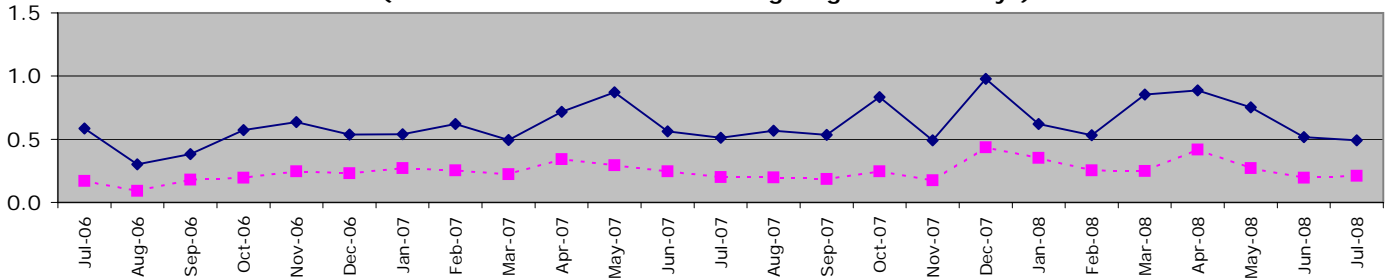
Organisational management

All Police officer sickness YTD = **2.65**

All Police officer sickness July = **0.50**

Police officers in OCUs

**Sickness and injury absence days per officer by month
(broken line shows data excluding long-term sick days)**

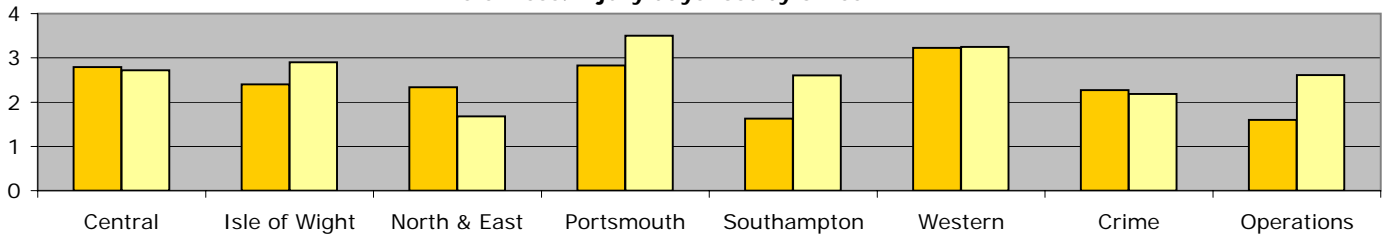


Force target for 08/09 = 7.5 days or fewer per officer (2.5 for 4 months) **YTD = 2.65 days lost per officer**

	Central	Isle of Wight	North & East	Portsmouth	Southampton	Western	Crime	Operations	OCU Totals
YTD Apr 08 - July 08	2.72	2.90	1.68	3.50	2.60	3.25	2.19	2.61	2.65
YTD Apr 07 - July 07	2.80	2.40	2.33	2.83	1.63	3.23	2.27	1.60	2.40
This month	0.53	0.88	0.36	0.80	0.12	0.79	0.45	0.19	0.49
% change	-2.8%	21.0%	-28.0%	23.8%	60.0%	0.7%	-3.9%	63.2%	10.2%

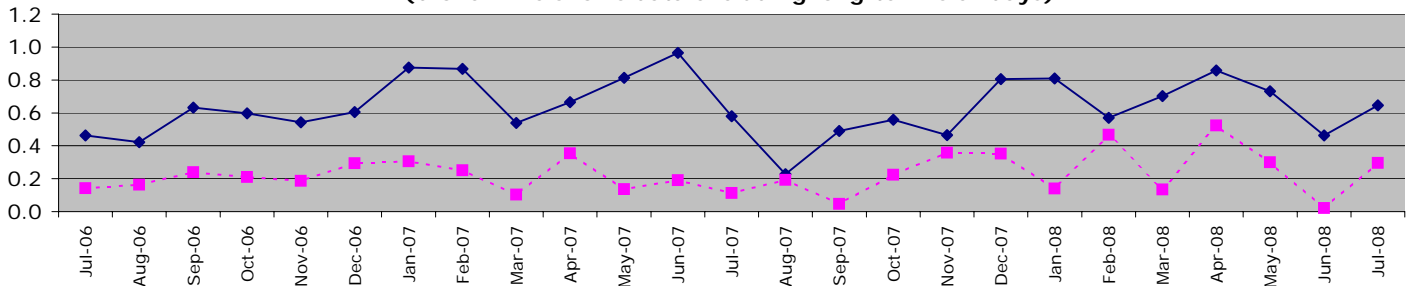
"Operations" includes SO Portfolio and Projects Staff

Sickness/injury days lost by officer YTD



Police officers not in OCUs

**Sickness and injury absence days per police officer by month
(broken line shows data excluding long-term sick days)**

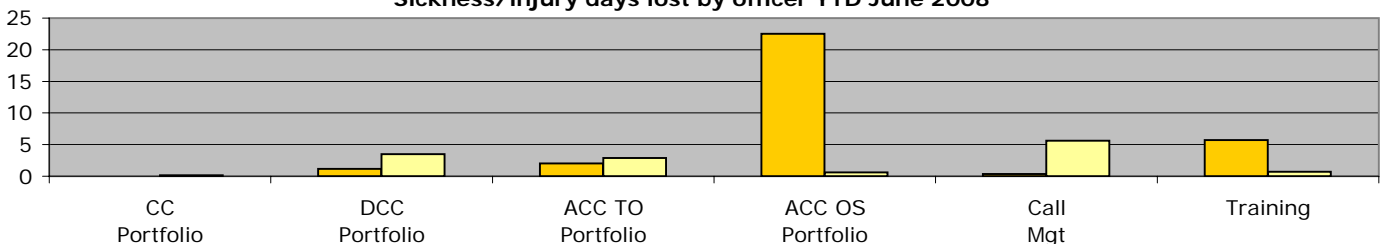


Force target for 08/09 = 7.5 days or fewer per officer (2.5 for 4 months) **YTD = 2.70 days lost per officer**

	CC Portfolio	DCC Portfolio	ACC TO Portfolio	ACC OS Portfolio	DoF Portfolio	Call Mgt	Training	Non-OCU Totals
YTD Apr 08 - July 08	0.17	3.51	2.86	0.63	N/A	5.61	0.70	2.70
YTD Apr 07 - July 07	0.00	1.15	2.03	22.50	N/A	0.35	5.69	3.12
This month	0.00	1.04	0.45	0.00	N/A	1.29	0.19	0.65
% change	N/A	206.5%	40.9%	-97.2%	N/A	1495.3%	-87.8%	-13.4%

ACC OS Portfolio excludes Call Mgt & Training figures which are reported on separately. No police officers work within DoF Portfolio.

Sickness/injury days lost by officer YTD June 2008



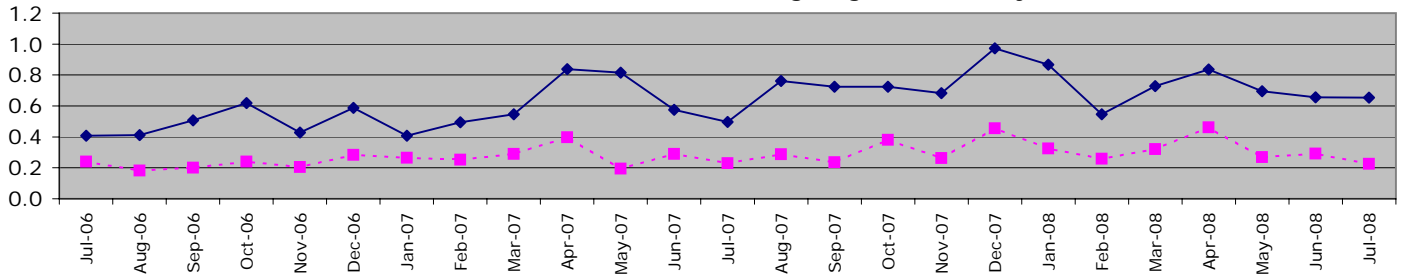
Organisational management

All Police staff sickness YTD = **2.76**

All Police staff sickness July = **0.63**

Police staff in OCU's

**Sickness and injury absence days per police staff member by month
(broken line shows data excluding long-term sick days)**

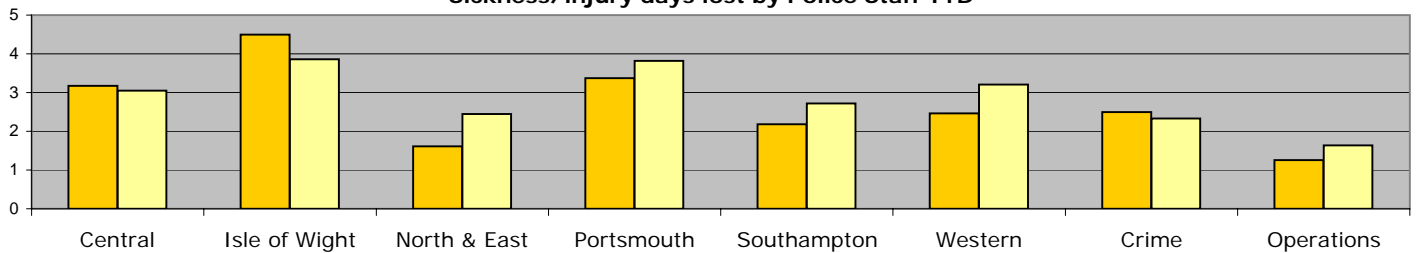


Force target for 08/09 = 7.5 days or fewer per staff (2.5 for 4 months) **YTD = 2.84 days lost per staff member**

	Central	Isle of Wight	North & East	Portsmouth	Southampton	Western	Crime	Operations	OCU Totals
YTD Apr 08 - July 08	3.05	3.86	2.45	3.82	2.72	3.20	2.33	1.64	2.84
YTD Apr 07 - July 07	3.18	4.49	1.61	3.37	2.18	2.46	2.50	1.26	2.57
This month	0.88	0.76	0.37	0.76	0.45	1.00	0.73	0.12	0.65
% change	-3.9%	-14.1%	51.8%	13.1%	24.5%	30.1%	-6.8%	30.4%	53.4%

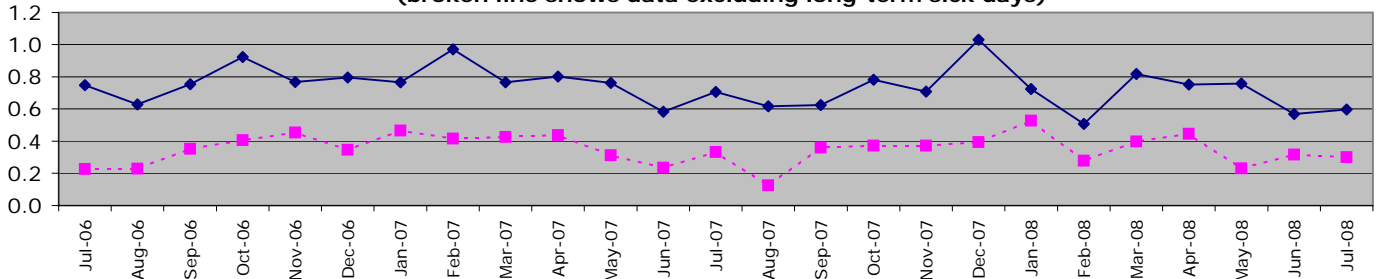
"Operations" includes SO Portfolio and Projects Staff

Sickness/injury days lost by Police Staff YTD



Police staff not in OCU's

**Sickness and injury absence days per police staff member by month
(broken line shows data excluding long-term sick days)**

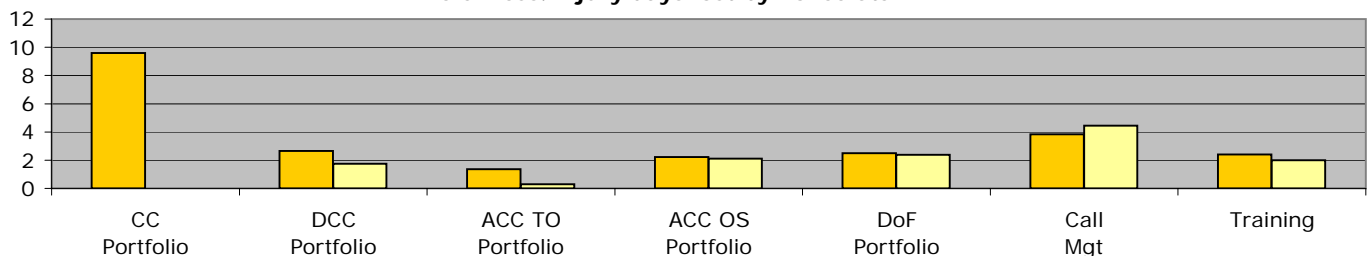


Force target for 08/09 = 7.5 days or fewer per staff (2.5 for 4 months) **YTD = 2.68 days lost per staff member**

	CC Portfolio	DCC Portfolio	ACC TO Portfolio	ACC OS Portfolio	DoF Portfolio	Call Mgt	Training	Non-OCU Totals
YTD Apr 08 - July 08	0.00	1.74	0.30	2.11	2.39	4.44	2.01	2.68
YTD Apr 07 - July 07	9.60	2.66	1.37	2.23	2.49	3.84	2.40	2.86
This month	0.00	0.54	0.00	0.39	0.60	1.09	-0.14	0.60
% change	-100.0%	-34.6%	-78.0%	-5.4%	-3.9%	15.6%	-16.3%	-6.3%

ACC OS Portfolio excludes Call Mgt & Training figures which are reported on separately.

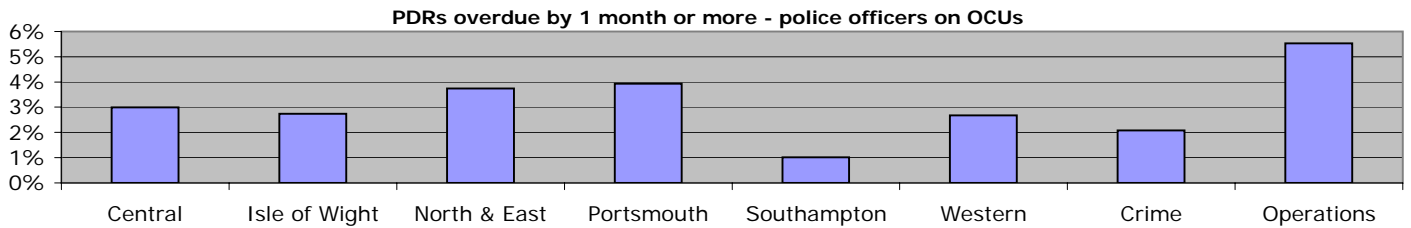
Sickness/injury days lost by Police Staff YTD



Organisational management

Overdue PDRs

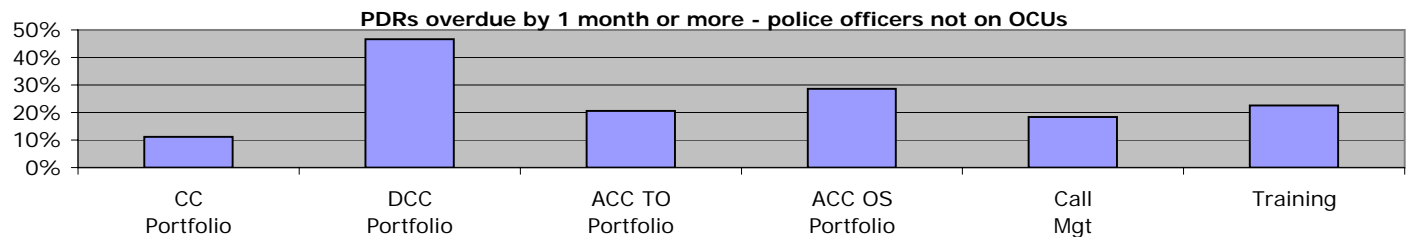
Police officer PDRs - police officers in OCUs



July 2008	Central	Isle of Wight	North & East	Portsmouth	Southampton	Western	Crime	Operations
Population	635	219	561	432	494	523	433	416
Overdue	19	6	21	17	5	14	9	23
% overdue	3.0%	2.7%	3.7%	3.9%	1.0%	2.7%	2.1%	5.5%

"Operations" includes SO Portfolio and Projects Staff

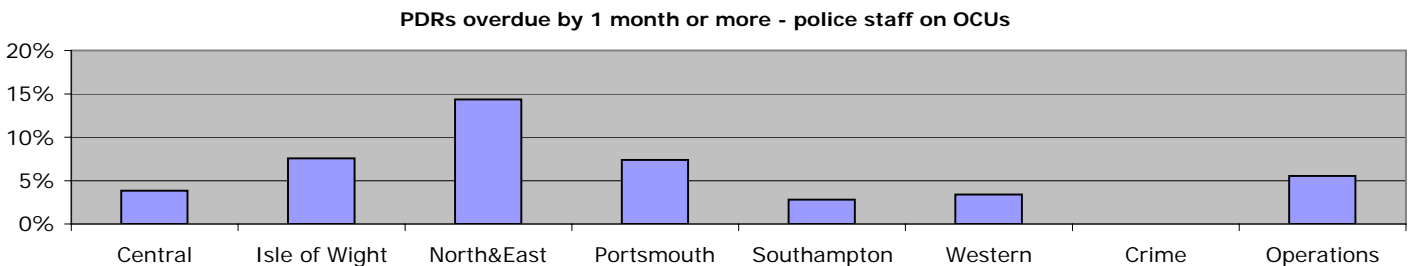
Police officer PDRs - police officers not on OCUs



July 2008	CC Portfolio	DCC Portfolio	ACC TO Portfolio	ACC OS Portfolio	DoF Portfolio	Call Mgt	Training
Population	9	45	34	7	N/A	38	62
Overdue	1	21	7	2	N/A	7	14
% overdue	11.1%	46.7%	20.6%	28.6%	N/A	18.4%	22.6%

ACC OS Portfolio excludes Call Mgt & Training figures which are reported on separately. No police officers work within DoF Portfolio

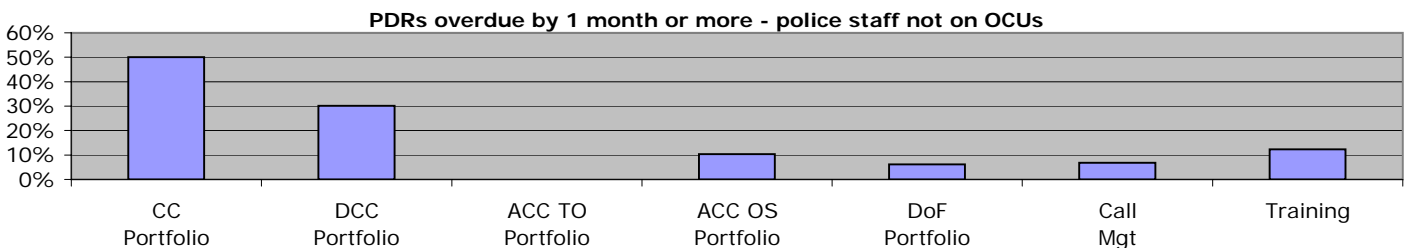
Police staff PDRs - police staff in OCUs



July 2008	Central	Isle of Wight	North&East	Portsmouth	Southampton	Western	Crime	Operations
Population	235	106	202	190	213	206	286	145
Overdue	9	8	29	14	6	7	0	8
% overdue	3.8%	7.5%	14.4%	7.4%	2.8%	3.4%	0.0%	5.5%

"Operations" includes SO Portfolio and Projects Staff

Police staff PDRs - police staff not in OCUs



July 2008	CC Portfolio	DCC Portfolio	ACC TO Portfolio	ACC OS Portfolio	DoF Portfolio	Call Mgt	Training
Population	2	329	38	443	146	415	97
Overdue	1	99	0	46	9	28	12
% overdue	50.0%	30.1%	0.0%	10.4%	6.2%	6.7%	12.4%

ACC OS Portfolio excludes Call Mgt & Training figures which are reported on separately

Organisational management

Minority Ethnic Officer Recruitment

	All recruits	Minority ethnic recruits	%
YTD July 2008	34	0	0%

Female Officer Representation

	Male strength	Female strength	%
YTD July 2008	2827.4	1018.4	26.5%

NCRS compliance

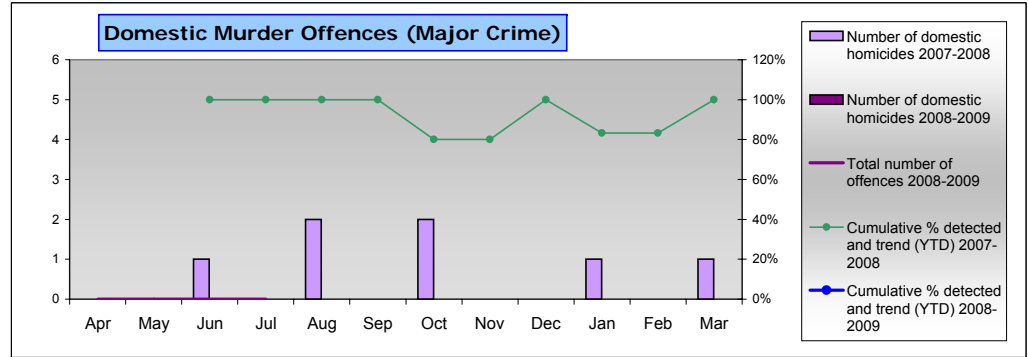
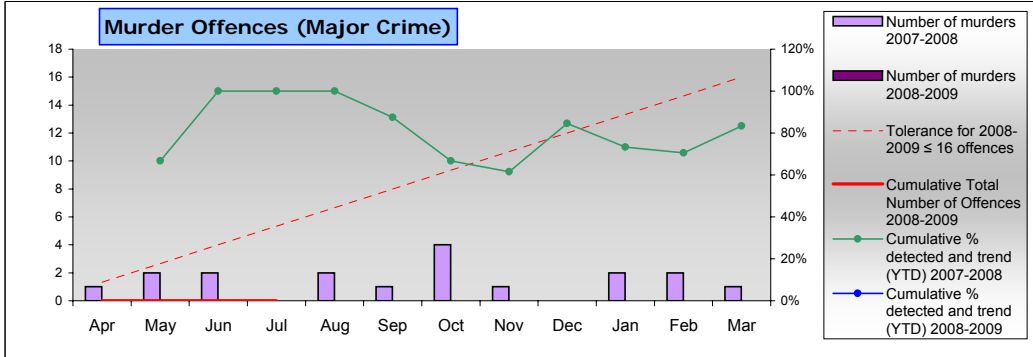
	Central	Isle of Wight	North & East	Portsmouth	Southampton	Western	Crime
NCRS audits	Fair 82%	Fair 82%	Fair 84%	Poor 72%	Poor 64%	Fair 85%	No data

Note: NCRS audit data relates to a rolling 12 mth period

Self-Inspection	91.0%	85.0%	80.0%	66.0%	81.0%	90.0%	No data
-----------------	-------	-------	-------	-------	-------	-------	---------

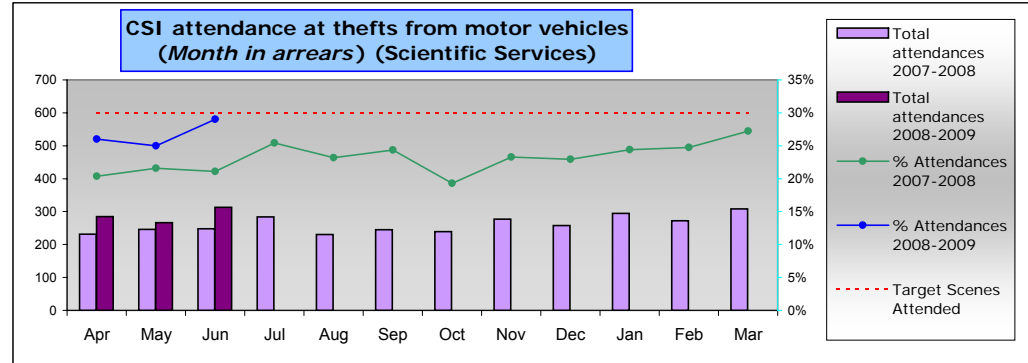
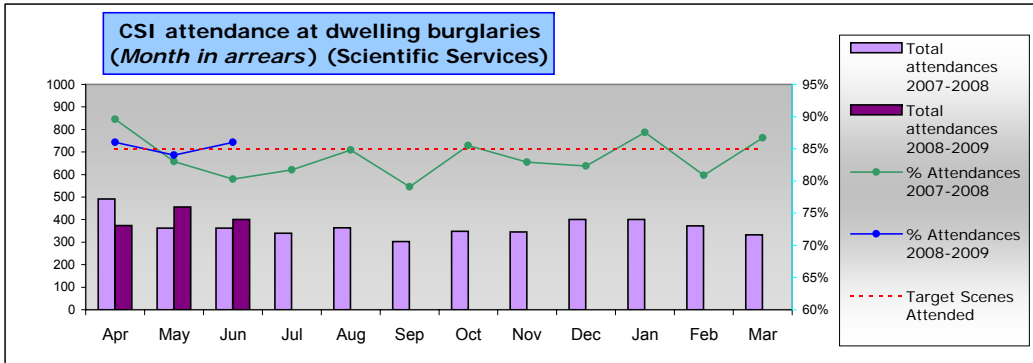
Note: Self-Inspections - only appealed records are moderated by the Force Crime Registrar

Specialist Operations - 7 OCU



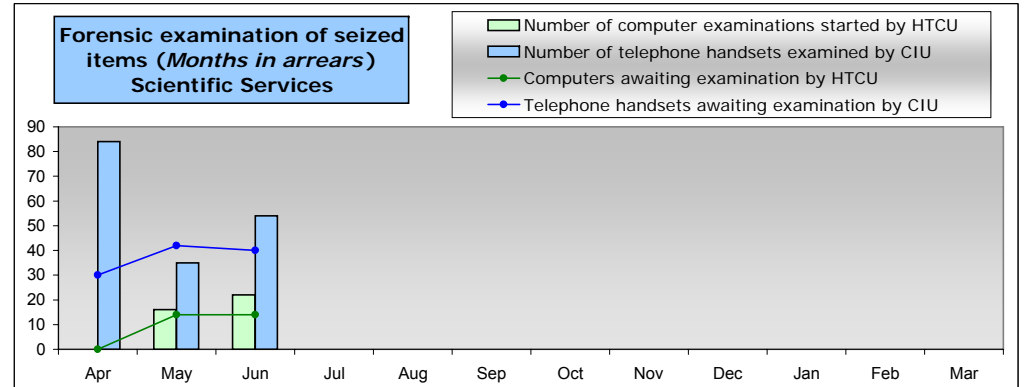
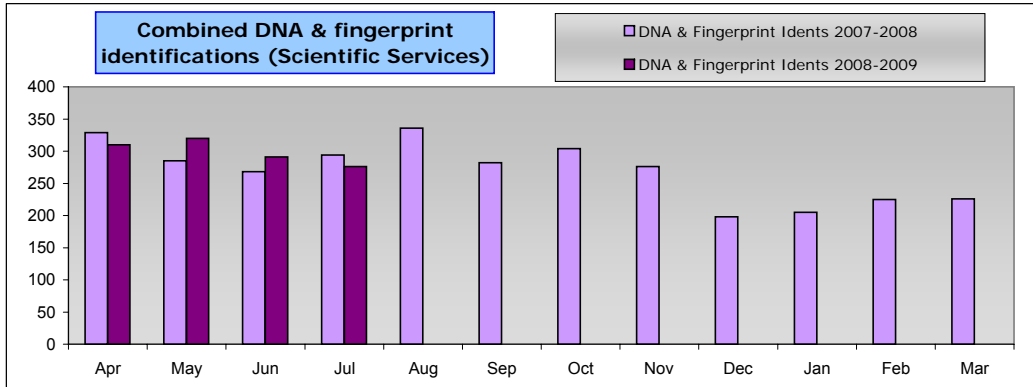
All murder offences this year compared to last year and detection rates
 The target is no more than 16 offences for the current year
 Detection target for murder is 100%

Domestic murder offences this year compared to last year and detection rates
 Detection target for murder is 100%



Burglary dwelling scene attendance rates. Target is no less than 85%

Theft from motor vehicle scene attendance rates. Target is no less than 30%



Combined DNA & fingerprint identifications this year compared to last year

Number of computer examinations started by HTCUCI
 Number of computers awaiting examination by HTCUCI
 Number of telephone handsets examined by CIU
 Number of telephone handsets awaiting examination by CIU

Specialist Operations - 8 OCU

Operational Availability				
	Current month 07	YTD 07	Current Month 08	YTD 08
ASU	99%	96%	100%	99%
CT&DE	Not previously recorded		98%	88%
DSU	89%	86%	87%	86%
FSU	81%	85%	92%	89%
MSU	95%	88%	99%	93%
OPPU	98%	96%	96%	95%
SFO	69%	75%	96%	86%
ARV	Not previously recorded		95%	90%
RPU	Not previously recorded		Not currently recorded	
Total	83%		94%	89%

Pre-Planned Operations July 2008*								
Op. Name	OCU Supported							Total
	1	2	3	4	5	6	Other	
Radon	0	0	0	0	0	0	0	0
Advasar	0	0	5	0	0	0	0	5
Cabot	0	0	0	0	0	0	0	0
Farnborough	0	0	6	0	0	0	0	6
Fairmead	1	0	0	0	4	0	0	5
Farlington	0	0	5	0	0	0	0	5
Greatham	0	0	1	0	0	0	0	1
Other	4	0	11	12	8	8	0	22
Total Ops.	5	0	28	12	12	8	0	44
Arrests	0	0	1	0	7	6	0	14
FPNs	13	0	9	8	11	18	0	59
Seizures	3	0	0	0	4	4	0	11
Other	23	0	8	8	20	3	0	62
Total Result	39	0	18	16	42	31	0	146

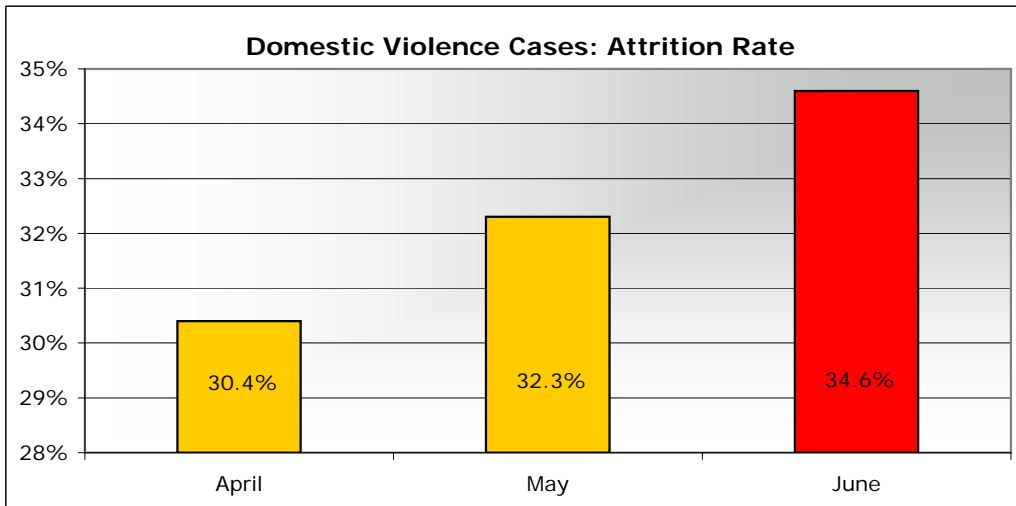
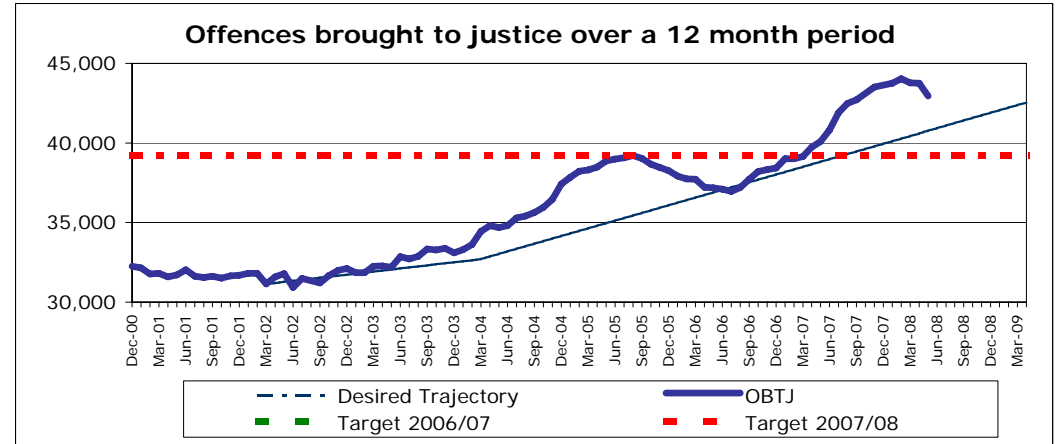
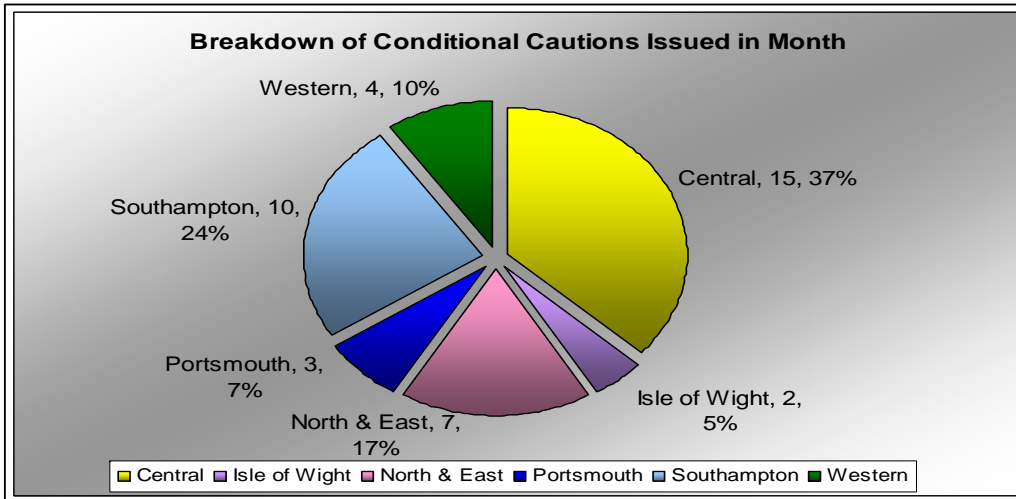
ANPR Operations July 2008*								
	OCU Supported							Total
	1	2	3	4	5	6	Other	
No. of Ops	0	0	1	1	7	22	0	31
Arrests	0	0	1	0	2	3	0	6
FPNs	0	0	0	0	32	69	0	101
Seizures	0	0	1	0	1	0	0	2
Other	0	0	0	1	62	11	0	74
Total Result	0	0	2	1	97	83	0	183

* Operations data is not included for all 8 OCU units due to the tight timescales involved and the pressures of policing work taking priority

Interventions in support of OCUs and Force Strategy YTD								
	Arrests	CT Activity		FPNs		C12	S44	S165
		No. of visits	Hours	E1	Other			
ASU	1	Trial still in progress. Data is not yet available for all vehicles however this is in the process of being rolled out to enable future reporting						
CT&DE	0		0			0	0	
DSU	126		2			366	21	
FSU	197		3			560	113	
MSU	6		0			13	7	
OPPU	1		0			1	0	
SFO	91		0			441	24	
ARV	472		6			1089	338	
RPU	773		3			3183	106	1127
Total	1667		14	0	5653	609	1127	

Operational Services

Issues of the month: Real variation in **conditional cautions** issued. 15 issued in Central OCU against a low number in Portsmouth. Rates of attrition in **domestic violence** cases continues to rise - working with partners to investigate. 69% of our Personnel Policies and procedures are up to date. 2% of Police Officer FTE and 1.7% of Police Staff FTE are absent on long term due to sickness. Case Management and supporting returns to work continue to receive much attention from Personnel teams. Within the last quarter we had no officers or staff leave during or after maternity leave. 4.9% of the Police Officer headcount and 18.8% of the police staff headcount, work reduced hours.



Offences Brought to Justice

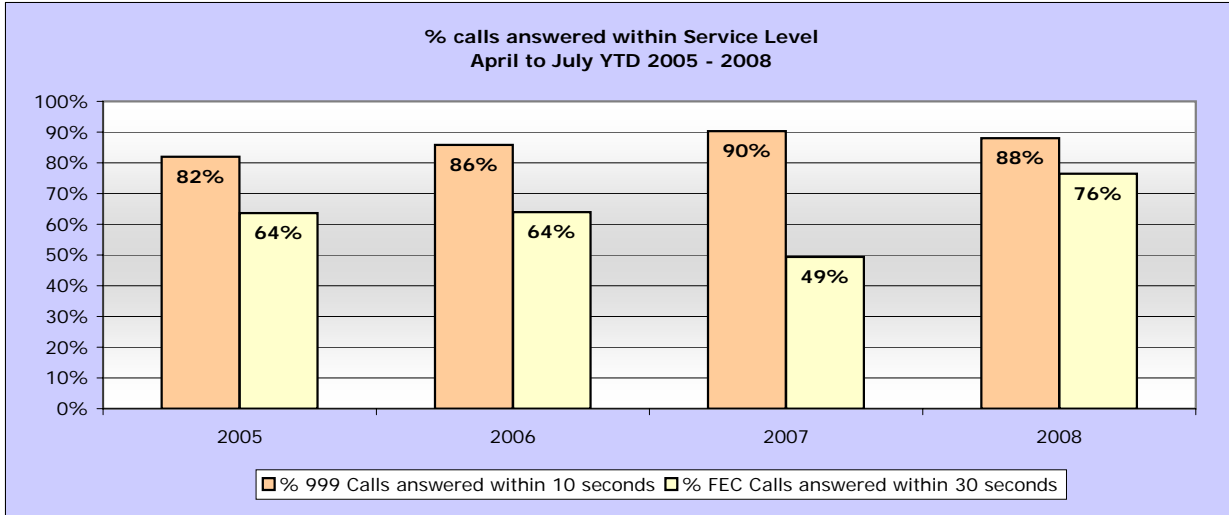
The rolling annual number of OBTJ has dropped significantly to 42,943.

This is due to three contributory factors:

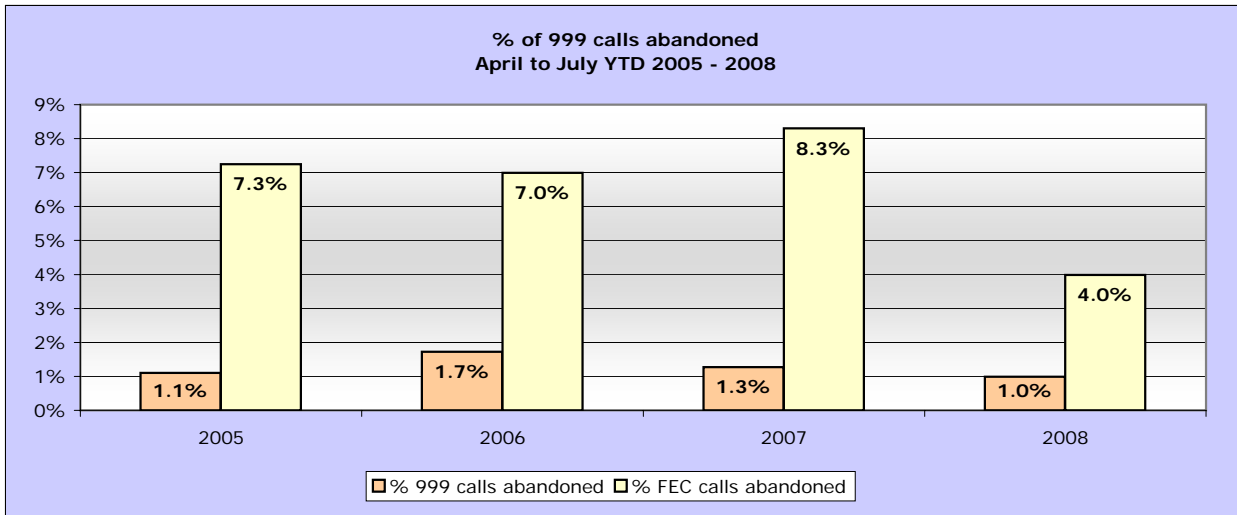
- **TICs have dropped 64% comparing May 2007 to May 2008
- **PND data has not been added into the May 2008 figure
- **Hampshire Constabulary caution data is being reprocessed for April 2008

Taking these contributory factors into account, the revised figure would be closer to 43,500.

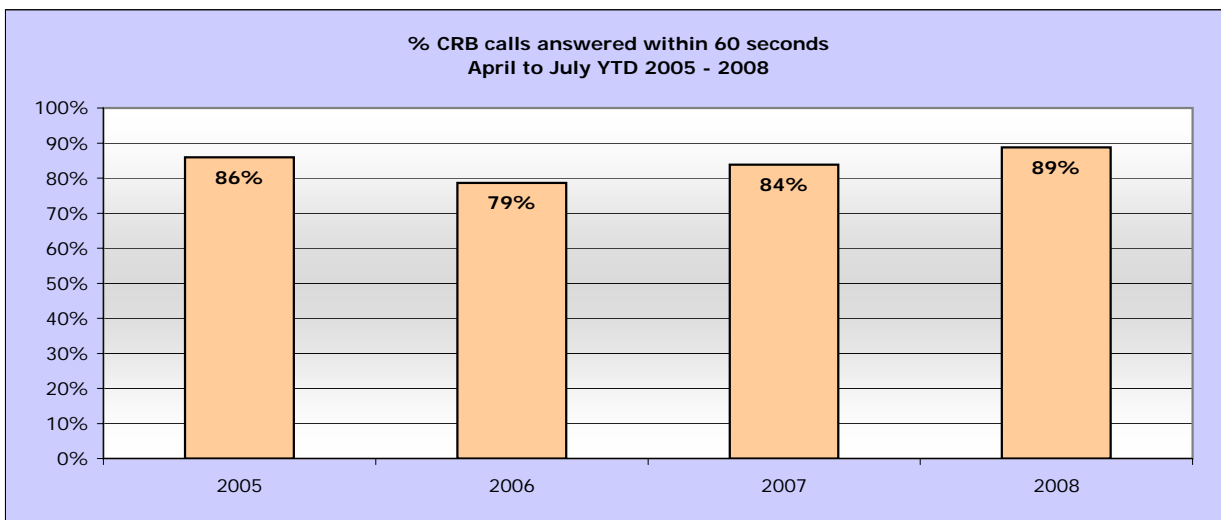
Call Management Data



	April - July YTD			
	2005	2006	2007	2008
% 999 Service Level	82%	86%	90%	88%
% FEC Service Level	64%	64%	49%	76%



	April - July YTD			
	2005	2006	2007	2008
% 999 calls abandoned	1.1%	1.7%	1.3%	1.0%
% FEC calls abandoned	7%	7%	8%	4%



	April - July YTD			
	2005	2006	2007	2008
CRB & Service Level	86%	79%	84%	89%